



**GAMMA RAY
NEUTRON
COMPLETION LOG**

Company **TOWN OIL COMPANY, INC.**
Well **ZUMMALLEN #7W**
Field **ST. PAUL-WALNUT**
County **CRAWFORD** State **KANSAS**

Location:
3070 FSL & 3630' FEL
N/2 SW SE NW
SEC 36 TWP 28S RGE 21E
Elevation
K.R.
M.F.
G.L.

Other Services
API #: 15-037-22363-00-00

Permanent Datum
Log Measured From
Drilling Measured From

G.L.
G.L.
G.L.

Elevation
Elevation

Date
7-24-2018

Run Number
1-NEUWELL

Depth Diller
449.4'

Top Log Interval
SURFACE

Bottom Logged Interval
449.4'

Fluid Level
FULL

Type Fluid
WATER

Production Casing
@ @ @

Max. Recorded Temp.
@ @ @

Estimated Cement Top
@ @ @

Calculated Cement Top
@ @ @

Amount & Type Cement
@ @ @

Amount & Type Admix
@ @ @

<<< Fold Here >>>

All interpretations are opinions based on inferences from electrical or other measurements and we cannot and do not guarantee the accuracy or correctness of any interpretation, and we shall not, except in the case of gross or willful negligence on our part, be liable or responsible for any loss, costs, damages, or expenses incurred or sustained by anyone resulting from any interpretation made by any of our officers, agents or employees. These interpretations are also subject to our general terms and conditions set out in our current Price Schedule.

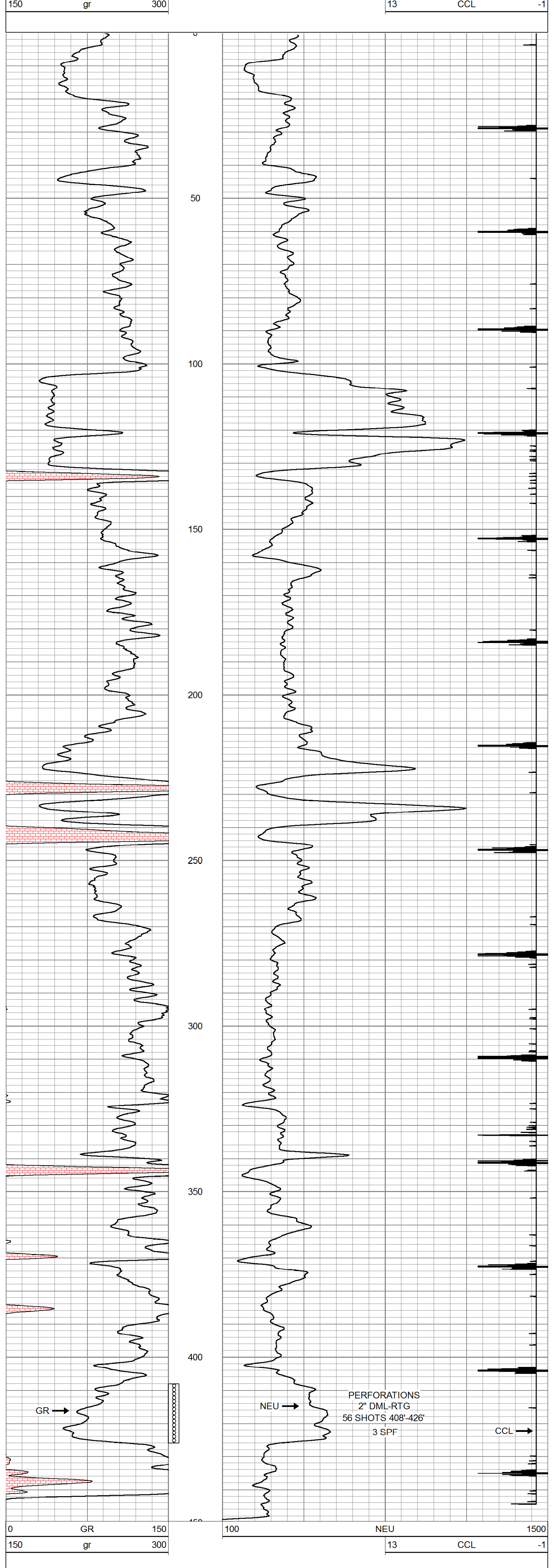
Comments

THANK YOU

Sensor	Offset (ft)	Schematic	Description	Len (ft)	OD (in)	Wt (lb)
GR	7.59		GR-TITAN_169 (TIT169_001) Titan 1 11/16" Gamma Ray	4.75	1.69	20.00
CCL	5.05		CCL-TITAN_169 (TIT169) Titan 1 11/16" Logging CCL	1.83	1.69	7.50
NEU	0.63		NEU-TITAN_169 (TIT169_001) Titan 1 11/16" Neutron	4.33	1.69	20.00

Dataset: zummallen #7w.db: field/well/run1/pass2
Total Length: 10.92 ft
Total Weight: 47.50 lb
O.D.: 1.69 in

Database File: f:\zummallen #7w.db
Dataset Pathname: pass2
Presentation Format: gr-n-ccl
Dataset Creation: Tue Jul 24 10:31:39 2018 by Log Std Casedhole 07122
Charted by: Depth in Feet scaled 1:240



Company TOWN OIL COMPANY, INC.
Well ZUMMALLEN #7W
Field ST. PAUL-WALNUT
County CRAWFORD SEC. 36 TWP. 28S RGE. 21E
State KANSAS Date 7-24-2018