



MIDWEST SURVEYS
 LOGGING - PERFORATING - CONSULTING SERVICES
 P.O. Box 68, Osawatomie, KS 68064
 913 / 755 - 2128

GAMMA RAY / NEUTRON / CCL

File No.

Company **Altavista Energy, Inc.**

Well **Section 35 No. A-19**

Field **Vernon**

County **Woodson**

State **Kansas**

Location **2145' FSL & 825' FEL**

SE-NW-NE-SE

Other Services **Perforate**

Sec. 35 Twp. 23s Rge. 16e

Permanent Datum **GL** Elevation **1031'**

Log Measured From **GL** Elevation **1031'**

Drilling Measured From **GL** Elevation **1031'**

Date **07-13-2018**

Run Number **One**

Depth Logger **1093.0**

Bottom Logger **1050.0**

Bottom Logged Interval **1049.0**

Top Log Interval **20.0**

Fluid Level **Full**

Type Fluid **Water**

Density / Viscosity **NA**

Salinity - PPM Cl **NA**

Max Recorded Temp **NA**

Estimated Cement Top **NA**

Equipment No. **104** Location **Osawatimie**

Recorded By **Gary Windisch**

Witnessed By **Doug Evans**

BORE-HOLE RECORD

Run No. **1** BIT FROM **0.0** TO **40.0** SIZE **7.00"** WGT **220** FROM **0.0** TO **40.0**

Run No. **Two** BIT FROM **40.0** TO **1093.0** SIZE **2.875"** WGT **6.5** FROM **0.0** TO **1082.0**

Run No. **Two** BIT FROM **40.0** TO **1093.0** SIZE **2.875"** WGT **6.5** FROM **0.0** TO **1082.0**

Run No. **Two** BIT FROM **40.0** TO **1093.0** SIZE **2.875"** WGT **6.5** FROM **0.0** TO **1082.0**

Run No. **Two** BIT FROM **40.0** TO **1093.0** SIZE **2.875"** WGT **6.5** FROM **0.0** TO **1082.0**

Run No. **Two** BIT FROM **40.0** TO **1093.0** SIZE **2.875"** WGT **6.5** FROM **0.0** TO **1082.0**

Run No. **Two** BIT FROM **40.0** TO **1093.0** SIZE **2.875"** WGT **6.5** FROM **0.0** TO **1082.0**

Run No. **Two** BIT FROM **40.0** TO **1093.0** SIZE **2.875"** WGT **6.5** FROM **0.0** TO **1082.0**

Run No. **Two** BIT FROM **40.0** TO **1093.0** SIZE **2.875"** WGT **6.5** FROM **0.0** TO **1082.0**

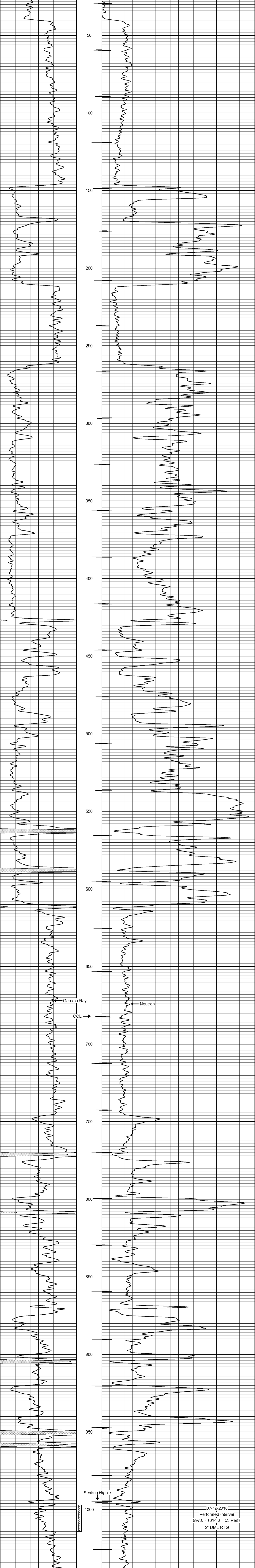
<<< Fold Here >>>

All interpretations are opinions based on inferences from electrical or other measurements and we cannot and do not guarantee the accuracy or correctness of any interpretation, and we shall not, except in the case of gross or willful negligence on our part, be liable or responsible for any loss, costs, damages, or expenses incurred or sustained by anyone resulting from any interpretation made by any of our officers, agents or employees. These interpretations are also subject to our general terms and conditions set out in our current Price Schedule.

Comments

Drilling Contractor :
Finney Drilling, Company

Database File: section35 a19.db
 Dataset Pathname: pass1
 Presentation Format: gr-n-ccl
 Dataset Creation: Fri Jul 13 10:14:41 2018 by Log SCH 111116
 Charted by: Depth in Feet scaled 1.240



07-19-2018
 Perforated Interval
 997.0 - 1014.0 53 Perfs
 2" DML RTG