

# SONIC LOG

Company BEAR PETROLEUM  
 Well THOMPSON A#1  
 Field N/A  
 County PAWNEE State KANSAS

Location: API # : 15-145-21834-00-00  
 660 FNL & 1605 FEL  
 SEC 16 TWP 22S RGE 20W  
 Permanent Datum GROUND LEVEL Elevation 2186  
 Log Measured From KELLY BUSHING 6' A.G.L.  
 Drilling Measured From KELLY BUSHING  
 Other Services CDL/CNL/DIL MEL  
 Elevation K.B. 2192 D.F. 2190 G.L. 2186

Date	07/05/18
Run Number	TWO
Depth Driller	4580
Depth Logger	4581
Bottom Logged Interval	4572
Top Log Interval	50
Casing Driller	8 5/8" @ 1278
Casing Logger	1278
Bit Size	7 7/8"
Type Fluid in Hole	CHEMICAL MUD
Density / Viscosity	9.3/52
pH / Fluid Loss	9.0/10.4
Source of Sample	FLOWLINE
Rm @ Meas. Temp	.60@82
Rmt @ Meas. Temp	.45@82
Rmc @ Meas. Temp	.72@82
Source of Rmf / Rmc	MEASURED
Rm @ BHT	.40@121
Time Circulation Stopped	2 HOURS
Time Logger on Bottom	
Maximum Recorded Temperature	122F
Equipment Number	4010
Location	HAYS, KANSAS
Recorded By	GUS PFANENSTIEL
Witnessed By	ROD ANDERSON

<<< Fold Here >>>

All interpretations are opinions based on inferences from electrical or other measurements and we cannot and do not guarantee the accuracy or correctness of any interpretation, and we shall not, except in the case of gross or willful negligence on our part, be liable or responsible for any loss, costs, damages, or expenses incurred or sustained by anyone resulting from any interpretation made by any of our officers, agents or employees. These interpretations are also subject to our general terms and conditions set out in our current Price Schedule.

### Comments

THANK YOU FOR USING ELI WIRELINE, HAYS, KS. (785) 628-6395

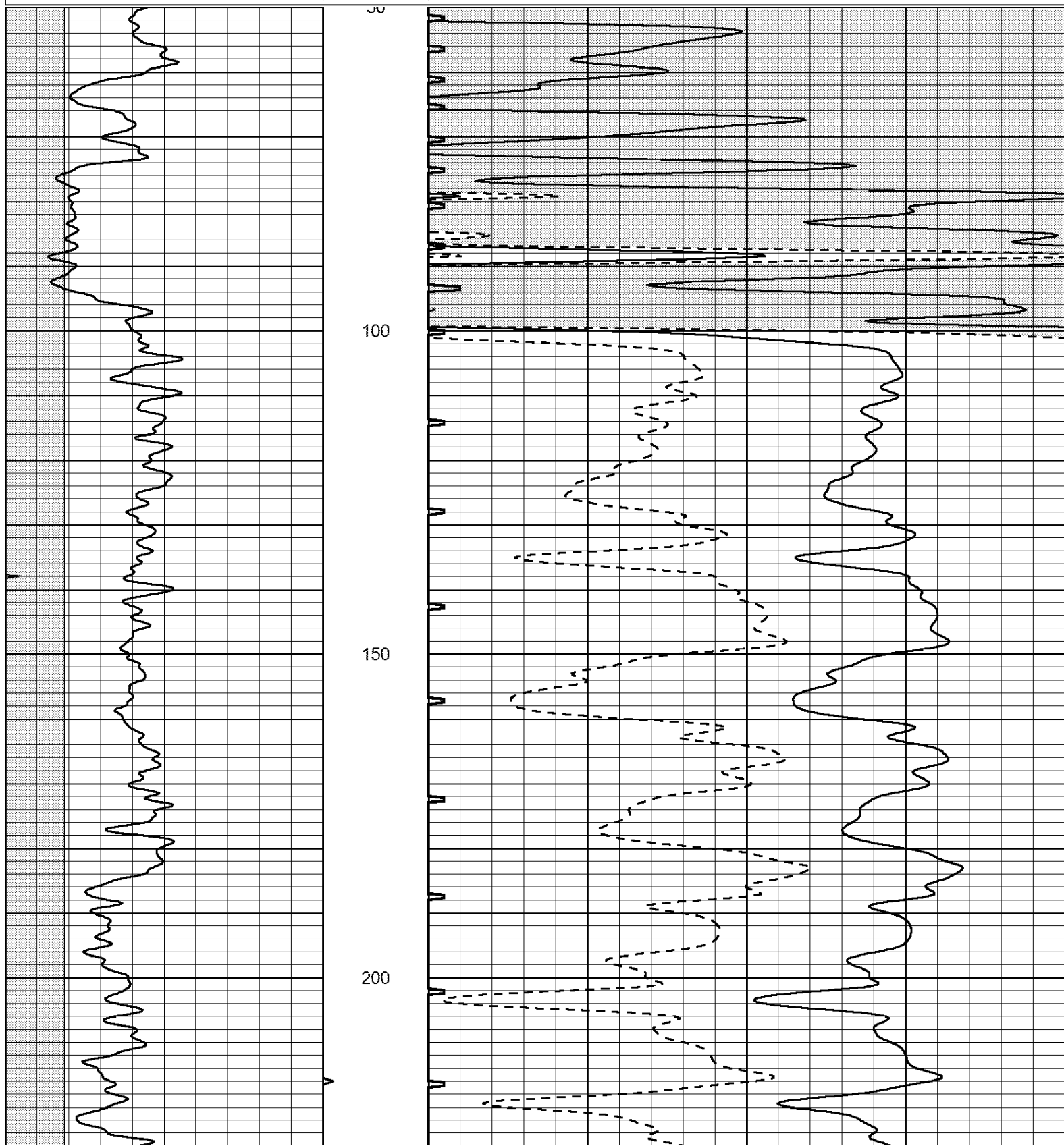
DIRECTIONS  
 BURDETT EAST TO 340 SOUTH TO K RD.  
 WEST INTO.

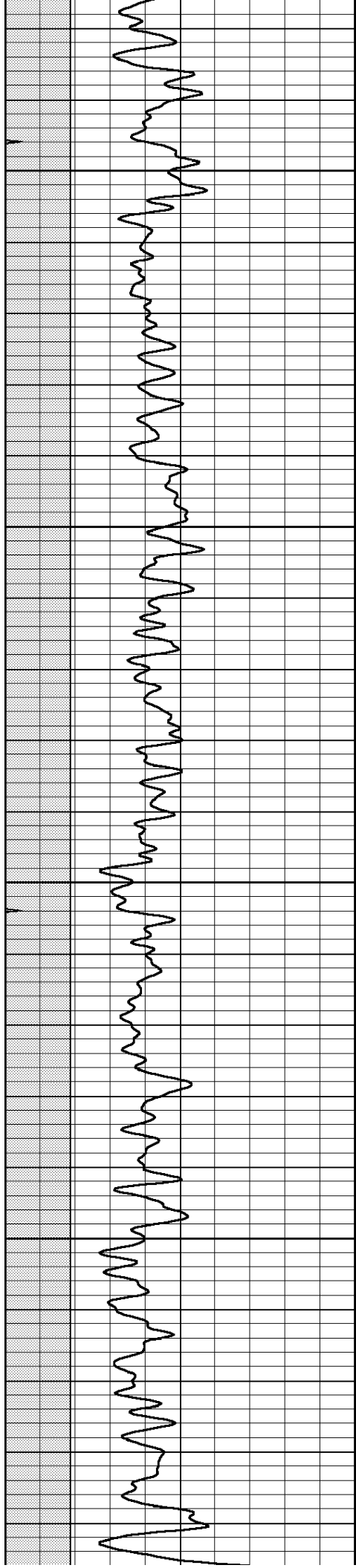


# MAIN PASS

Database File: 2689ddn.db  
 Dataset Pathname: pass5.1  
 Presentation Format: \_slt  
 Dataset Creation: Thu Jul 05 11:14:00 2018  
 Charted by: Depth in Feet scaled 1:240

0	GAMMA RAY (GAPI)	150	ABHV	140	DELTA TIME (usec/ft)	40	
6	CALIPER (in)	16	10 (ft3)	0	30	SONIC POROSITY (pu)	-10
0	MINMK	20	TBHV	0	ITT (msec)	20	
			0 (ft3)	10			



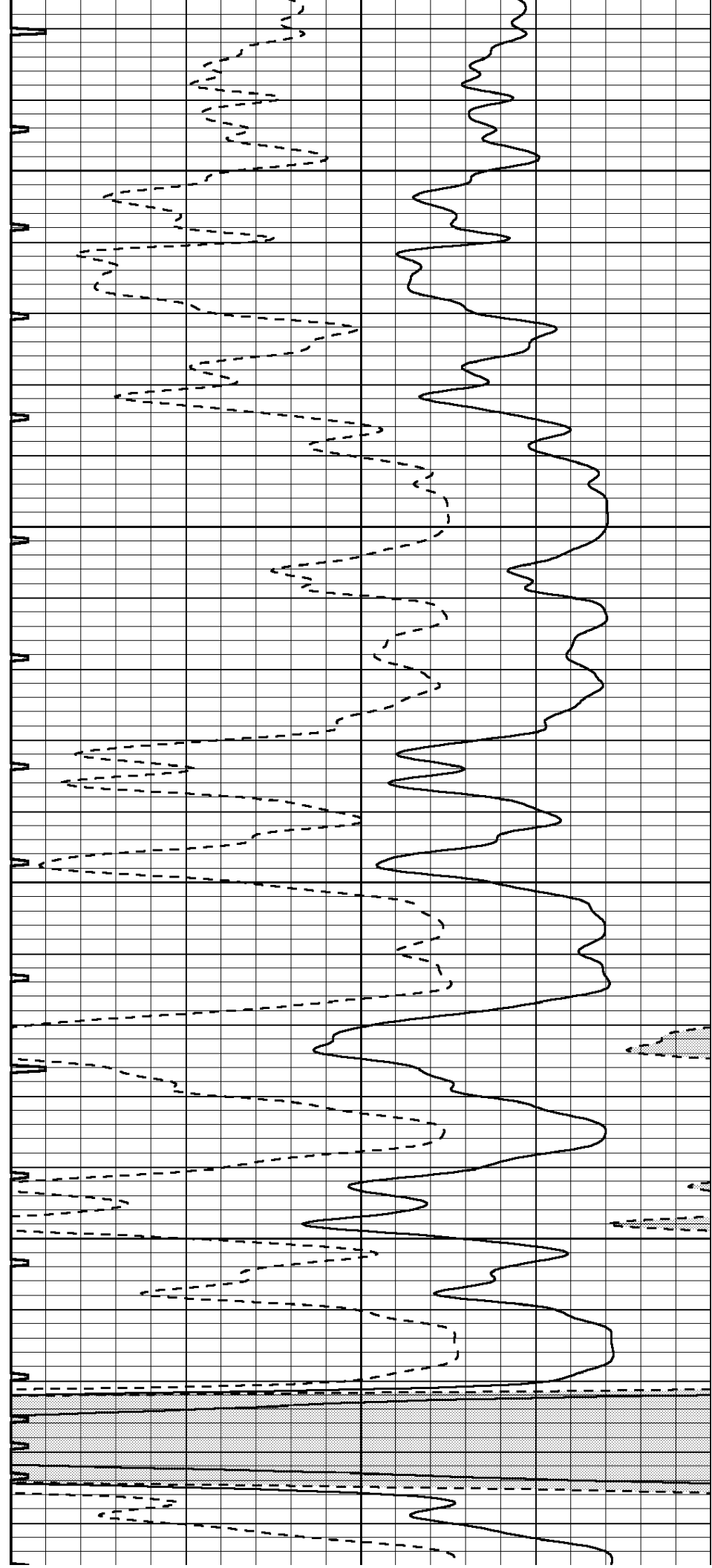


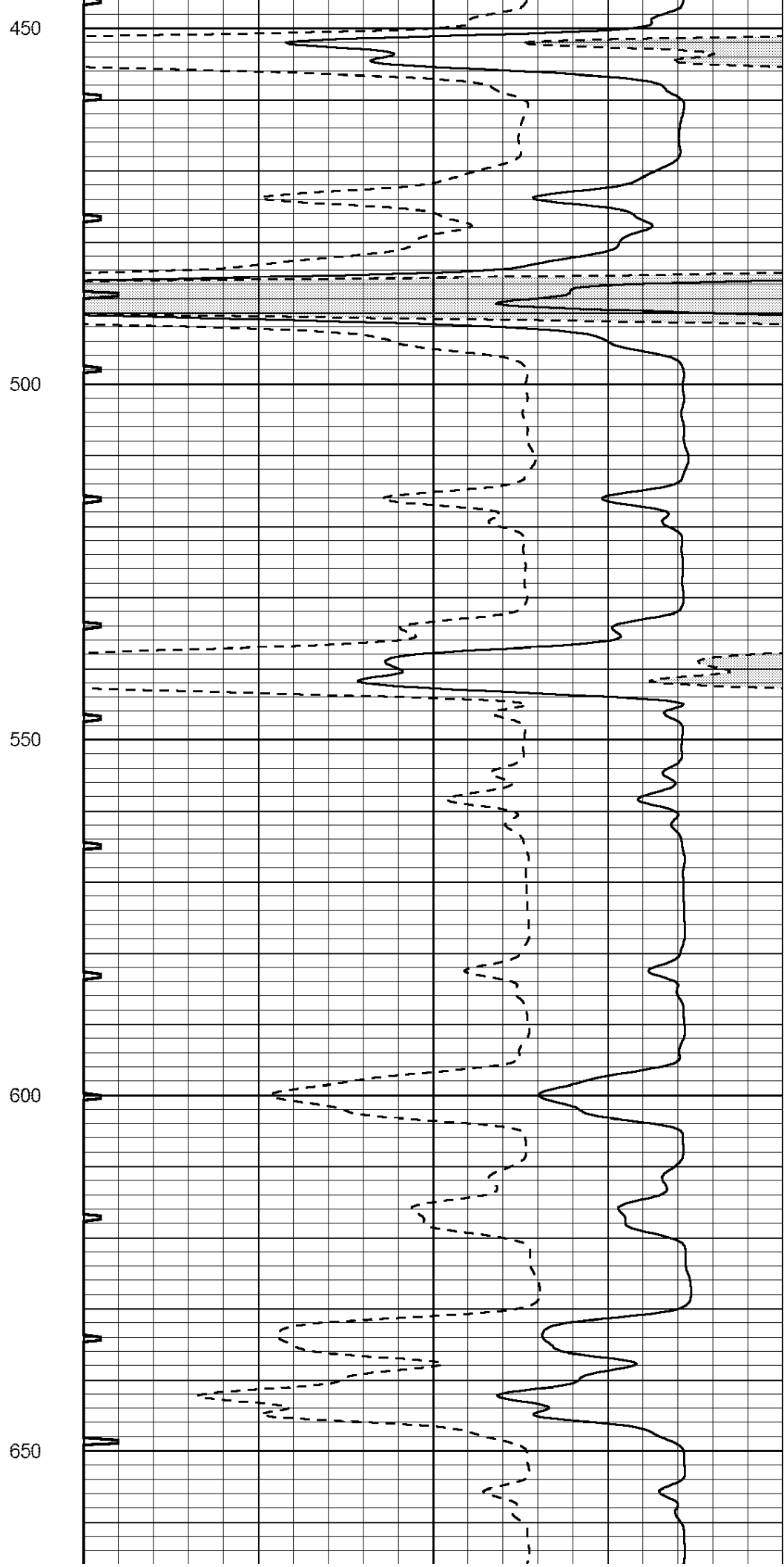
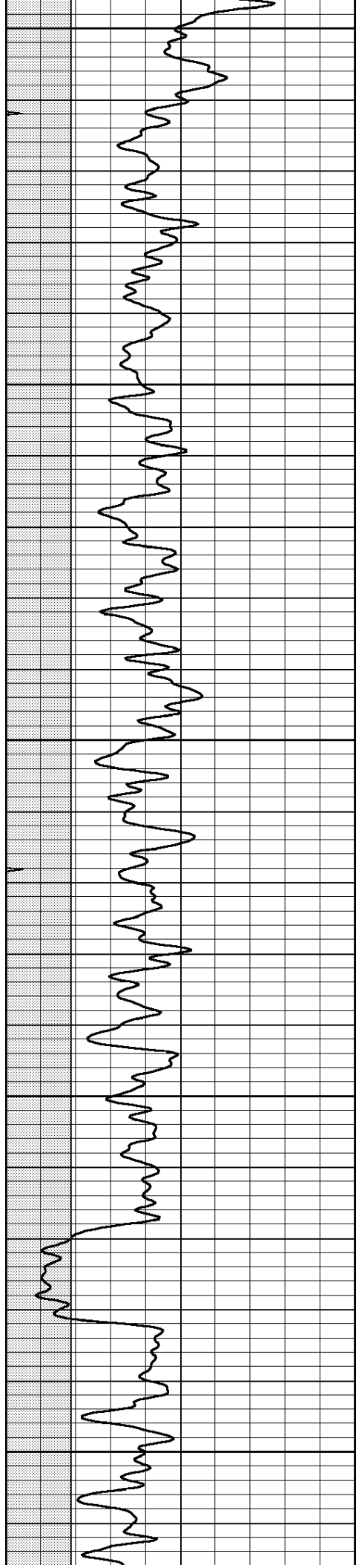
250

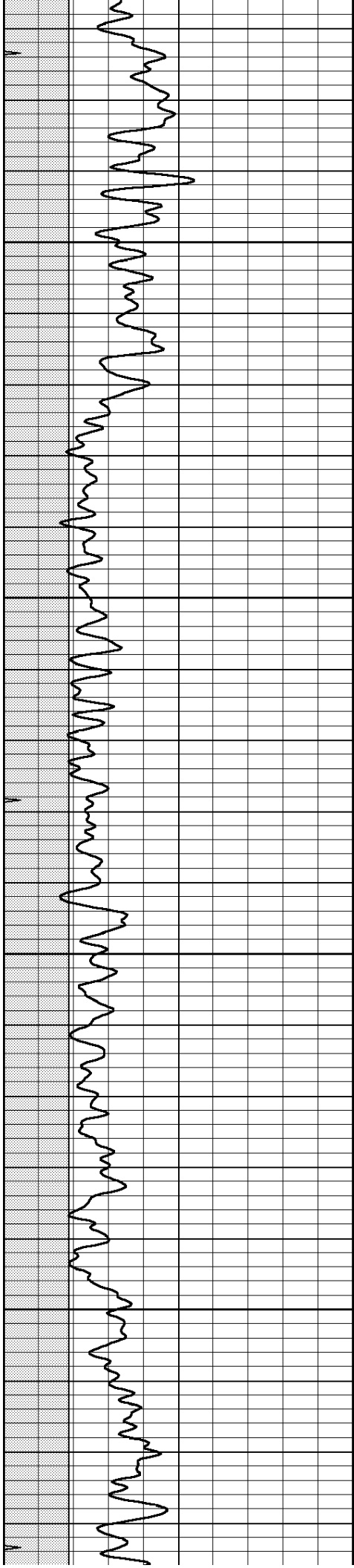
300

350

400





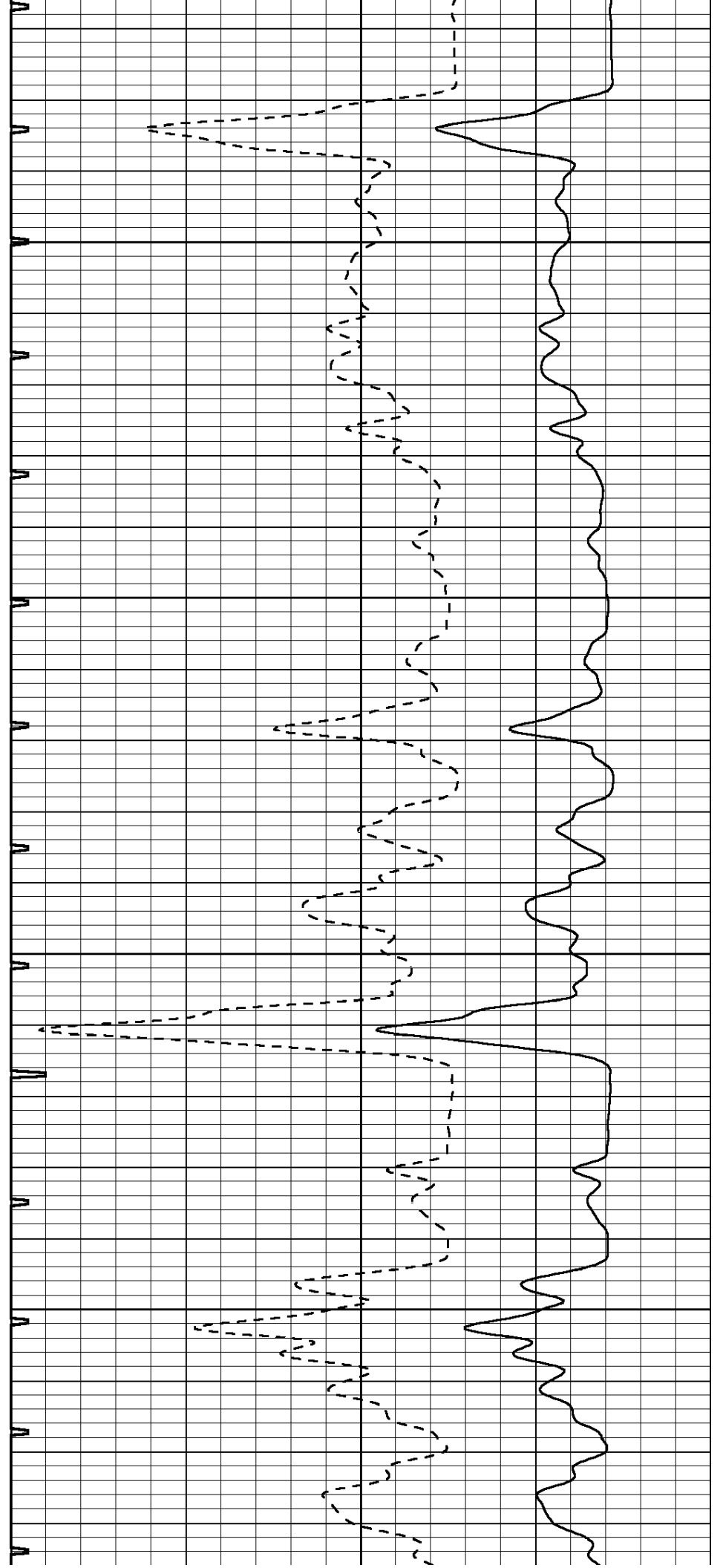


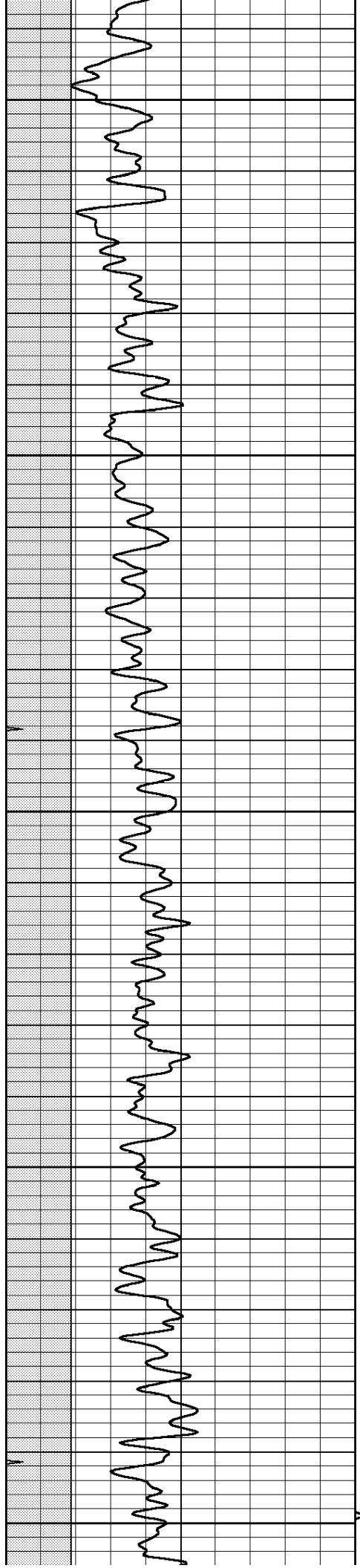
700

750

800

850





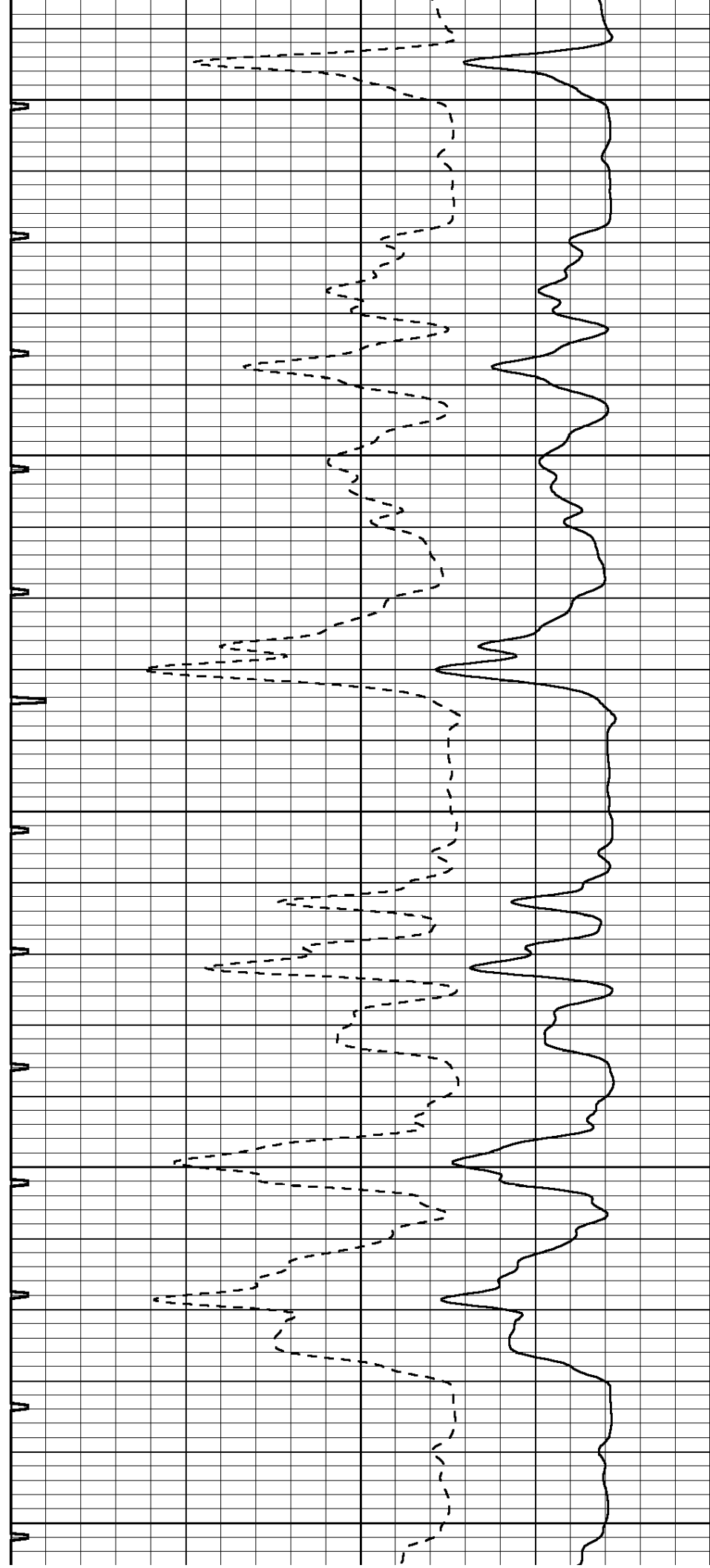
900

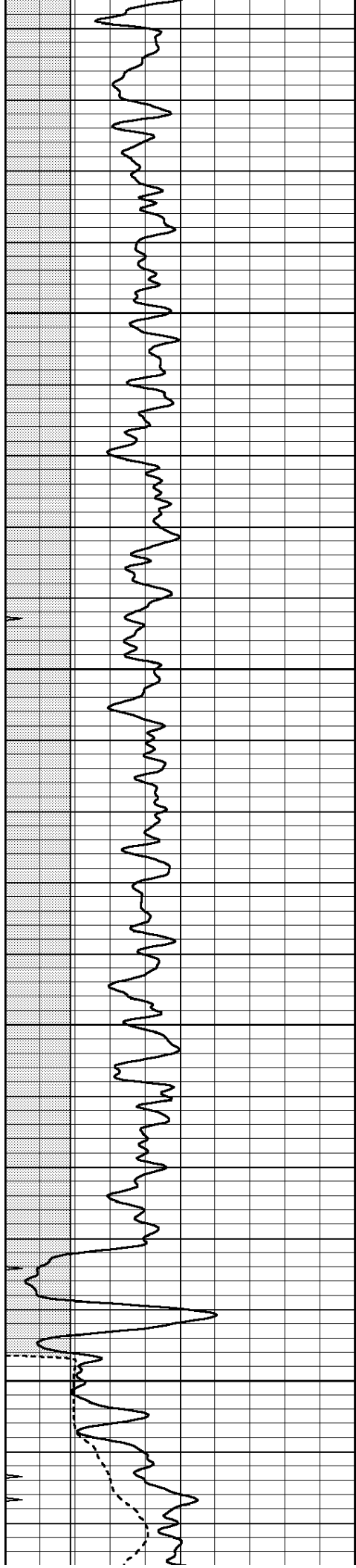
950

1000

1050

1100



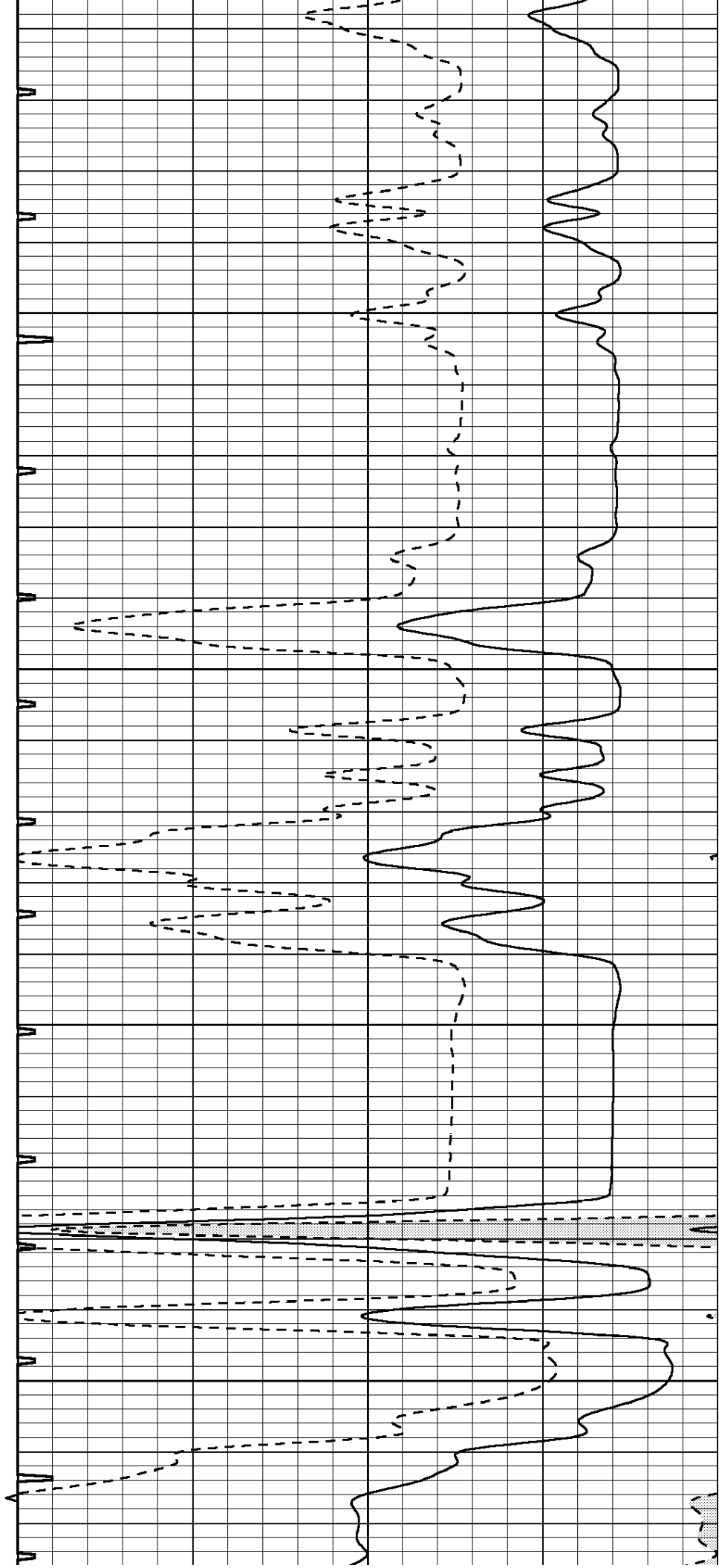


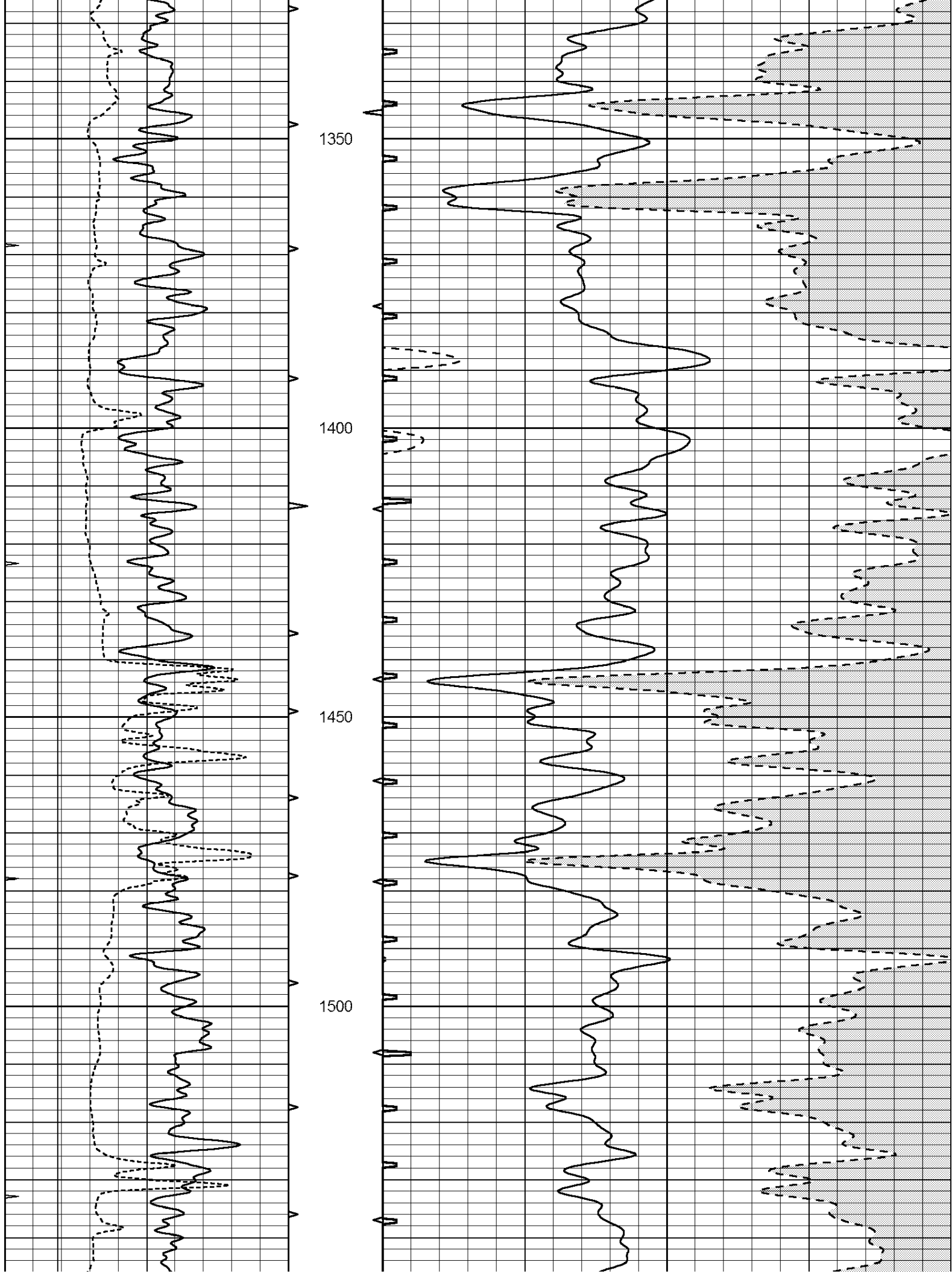
1150

1200

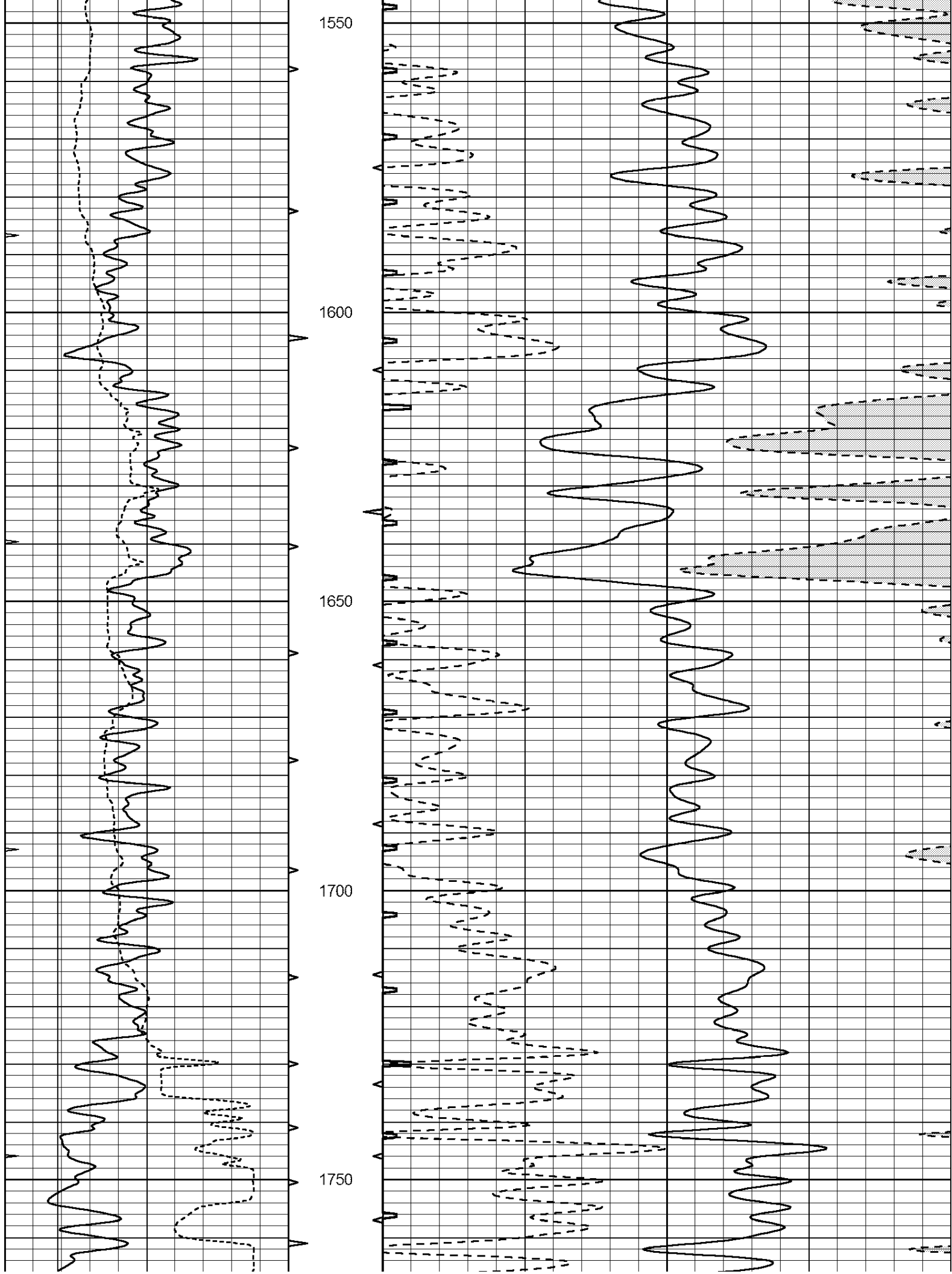
1250

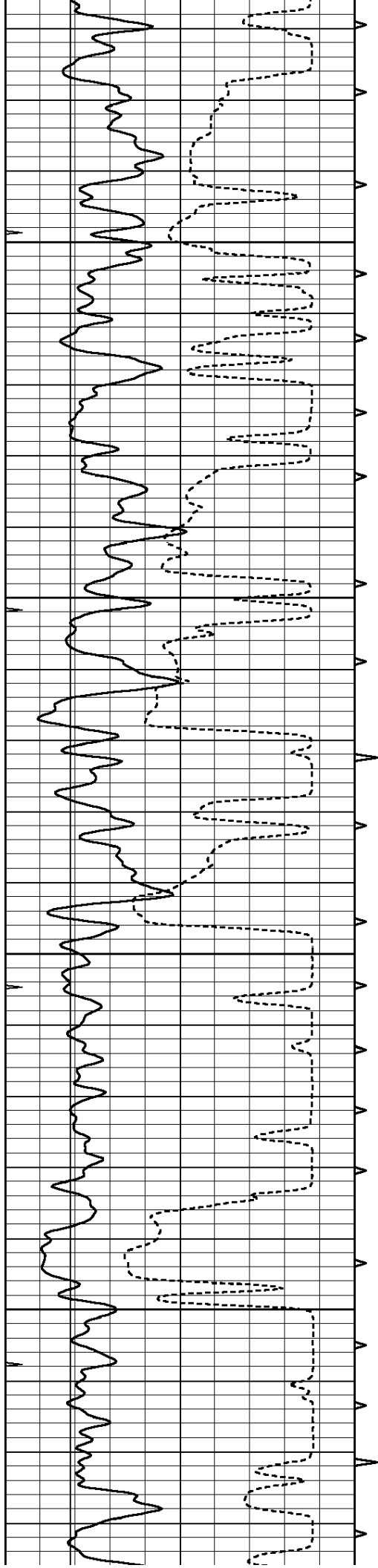
1300









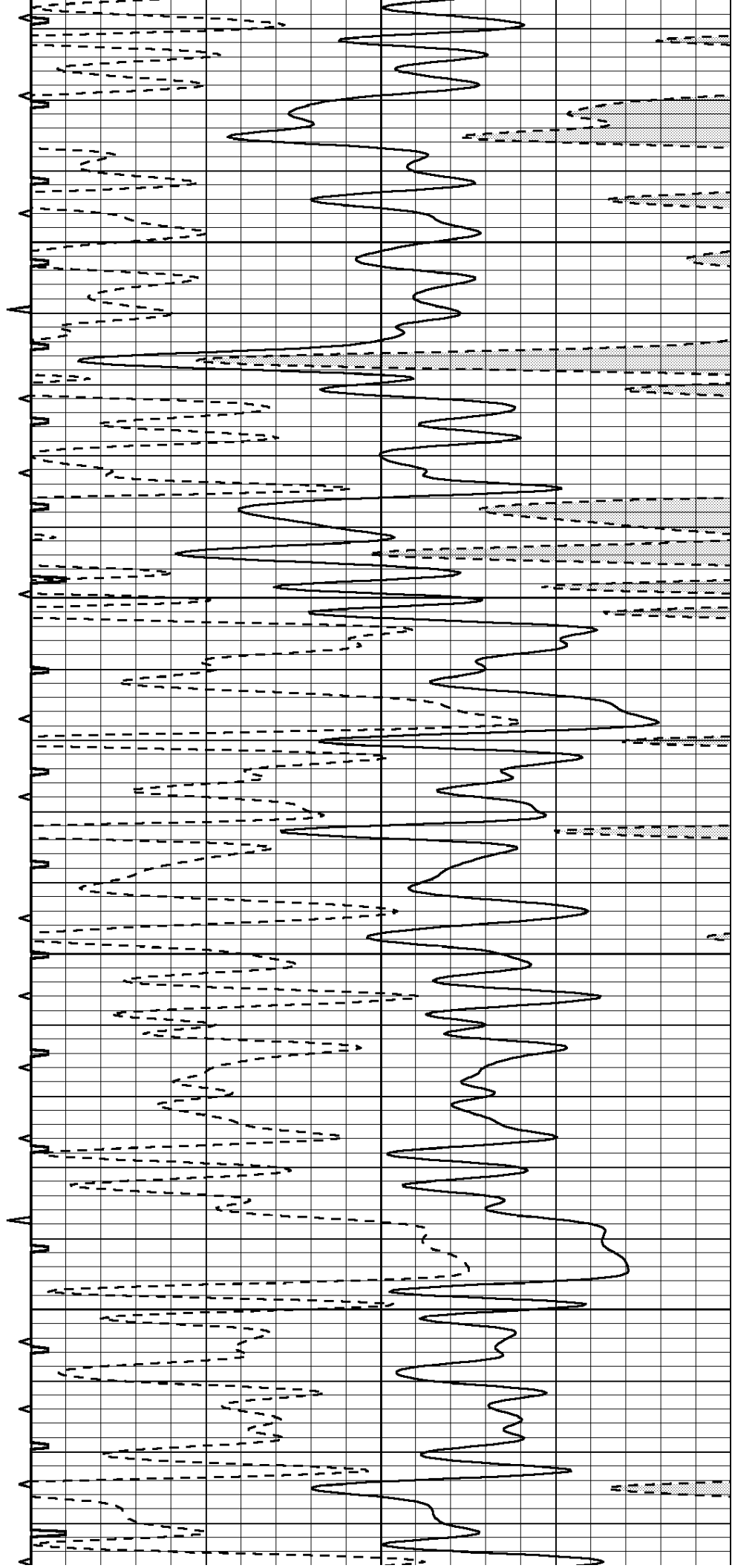


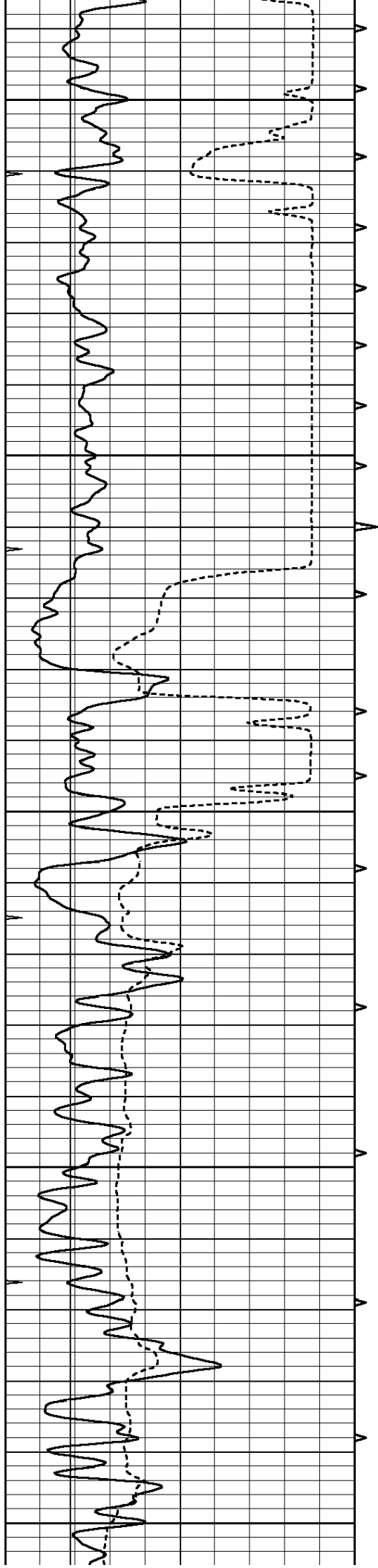
1800

1850

1900

1950





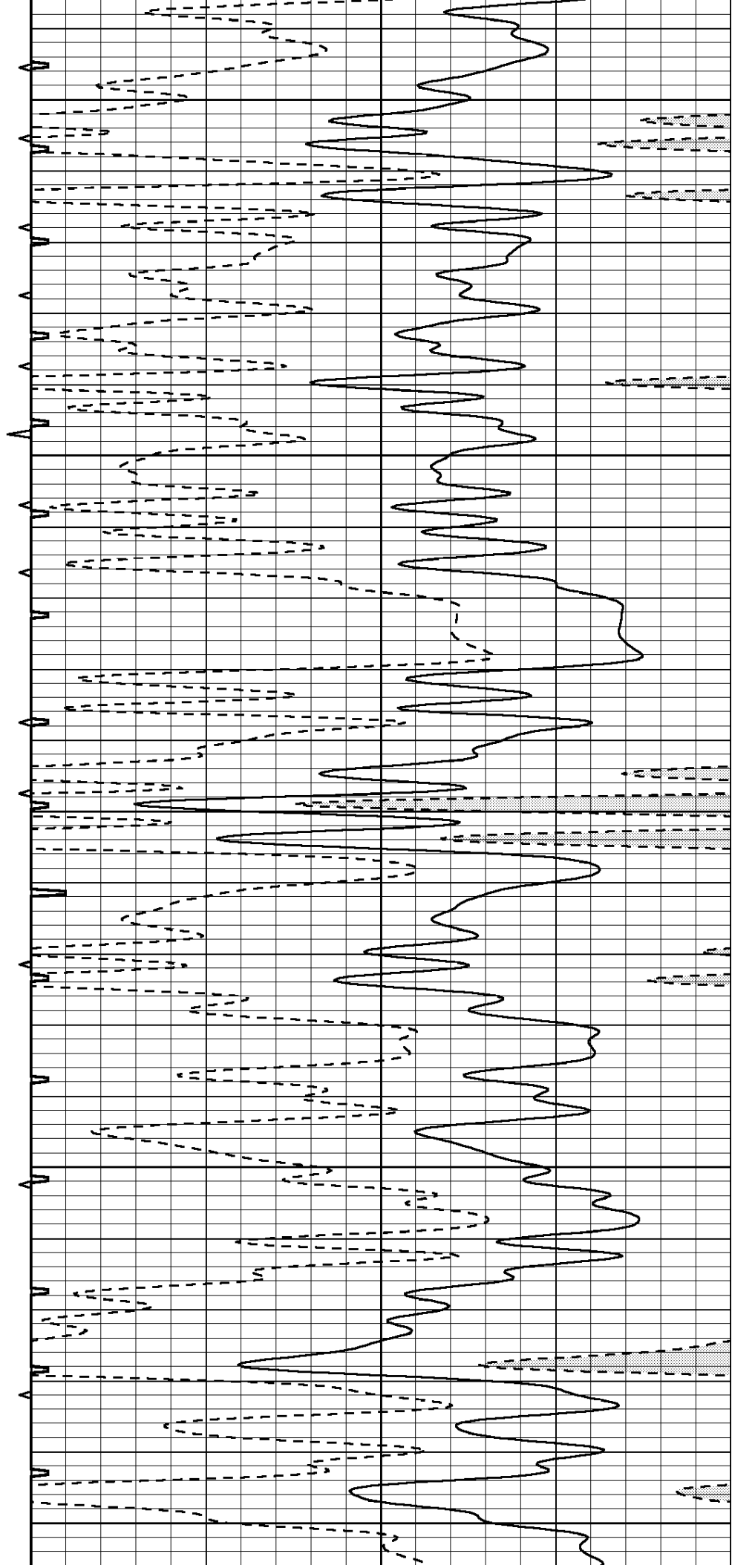
2000

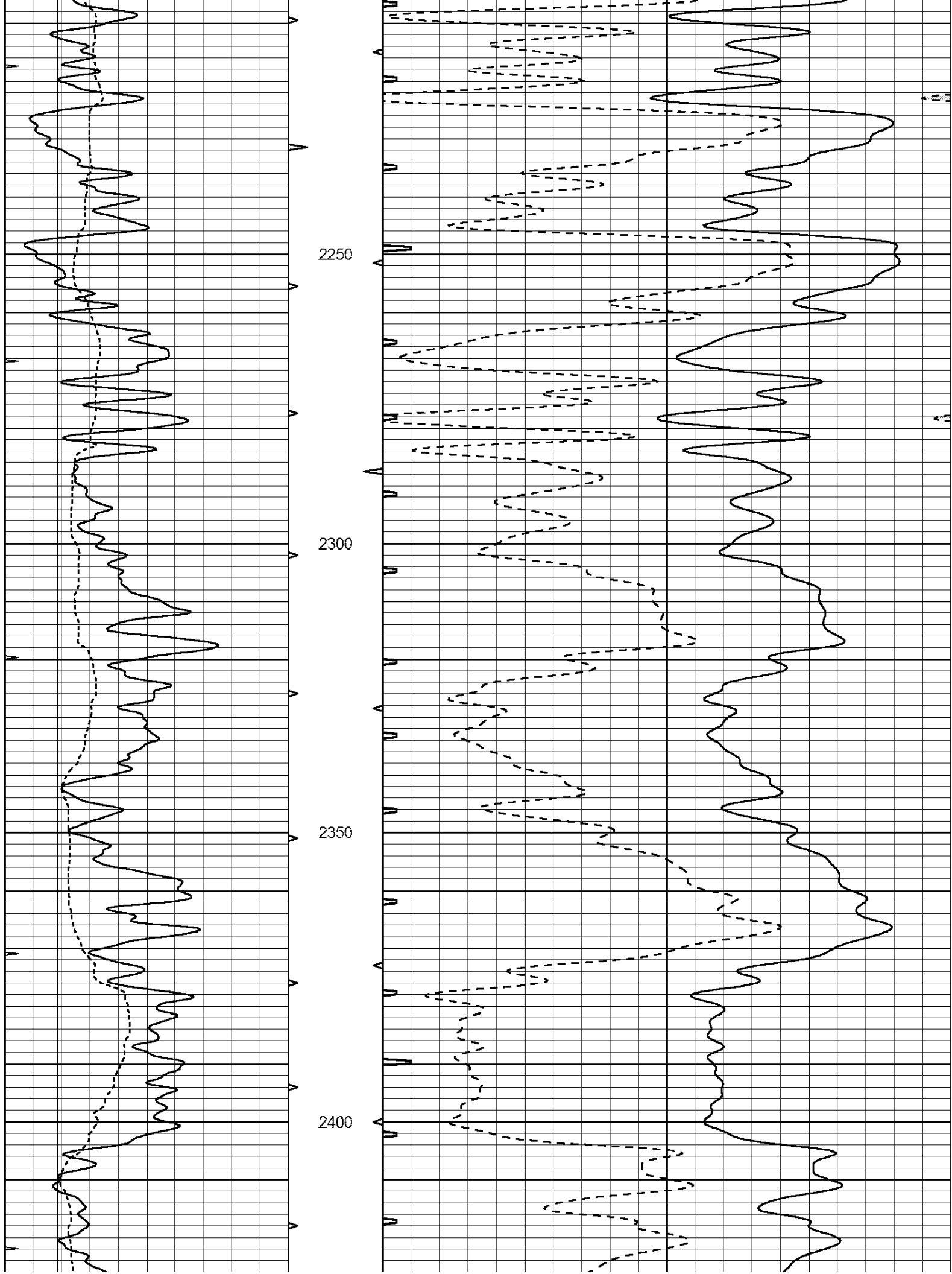
2050

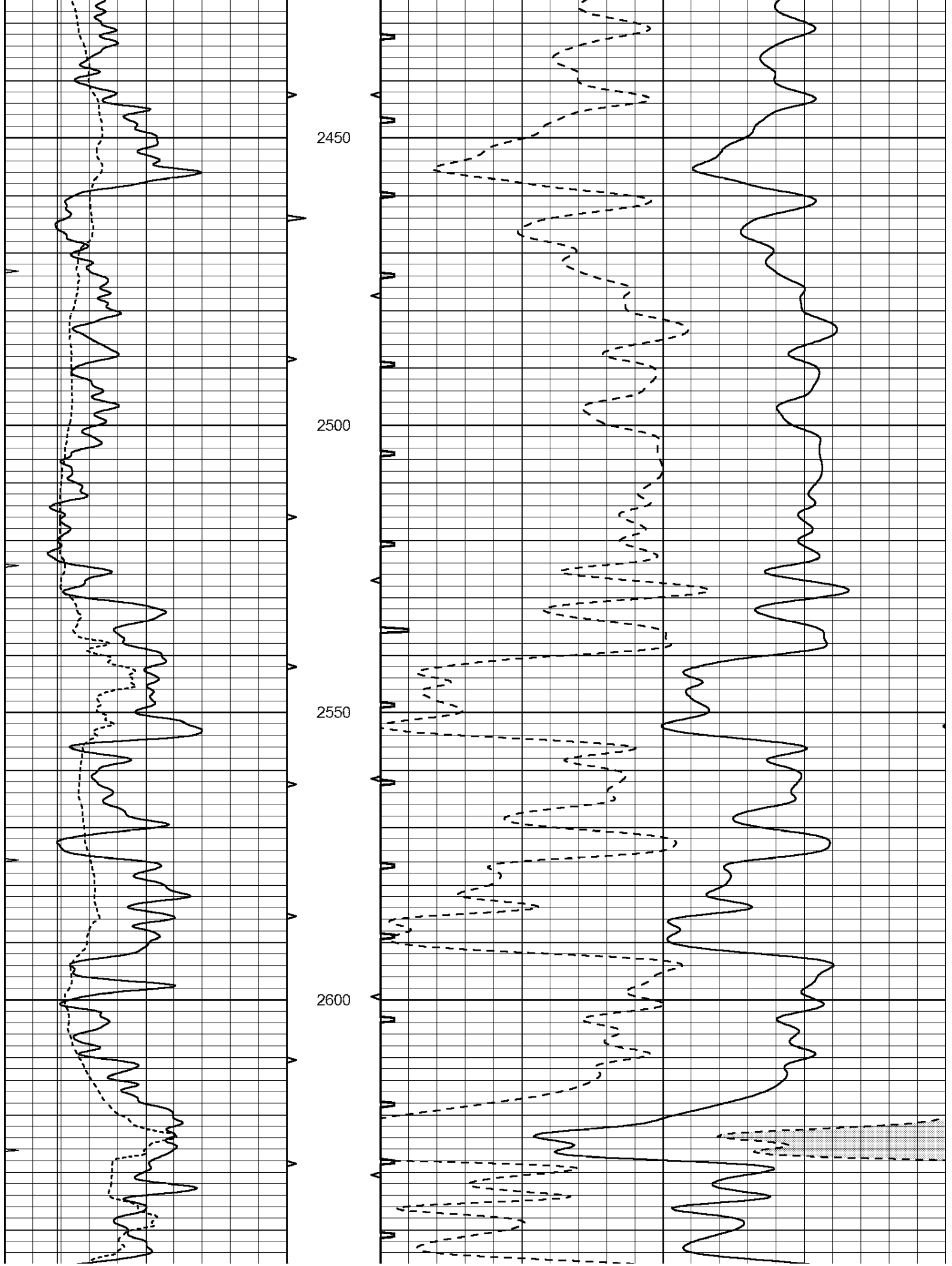
2100

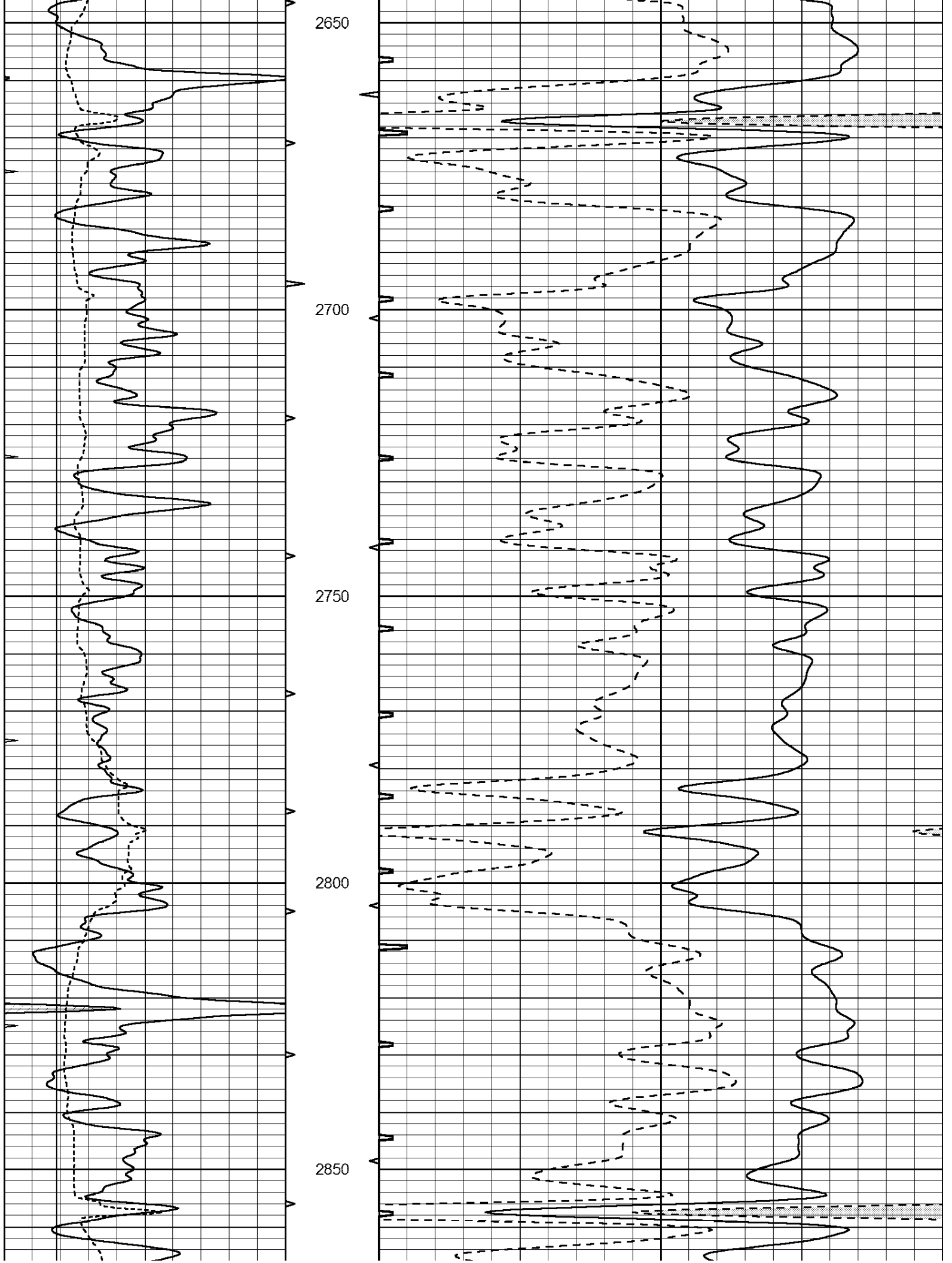
2150

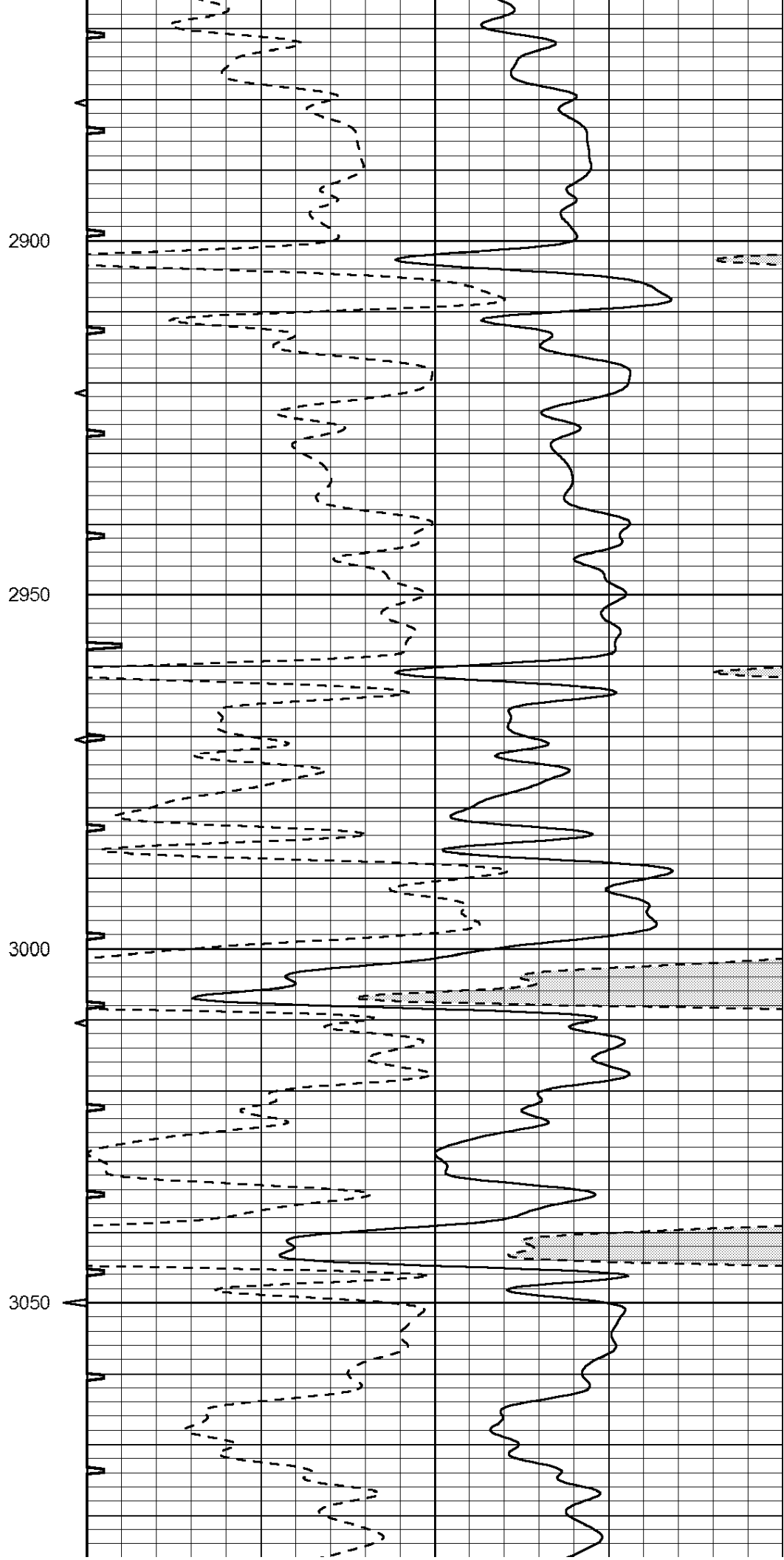
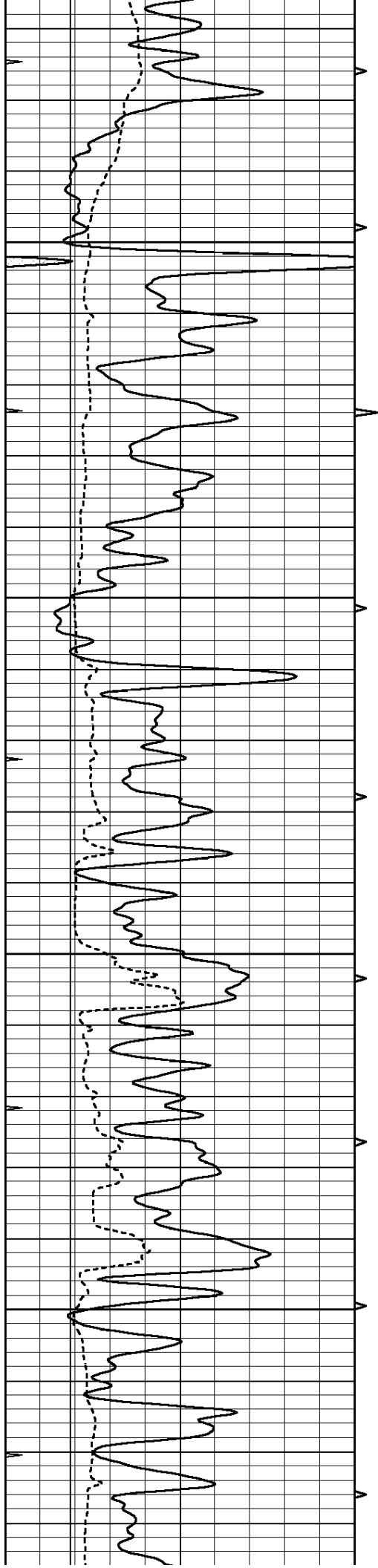
2200

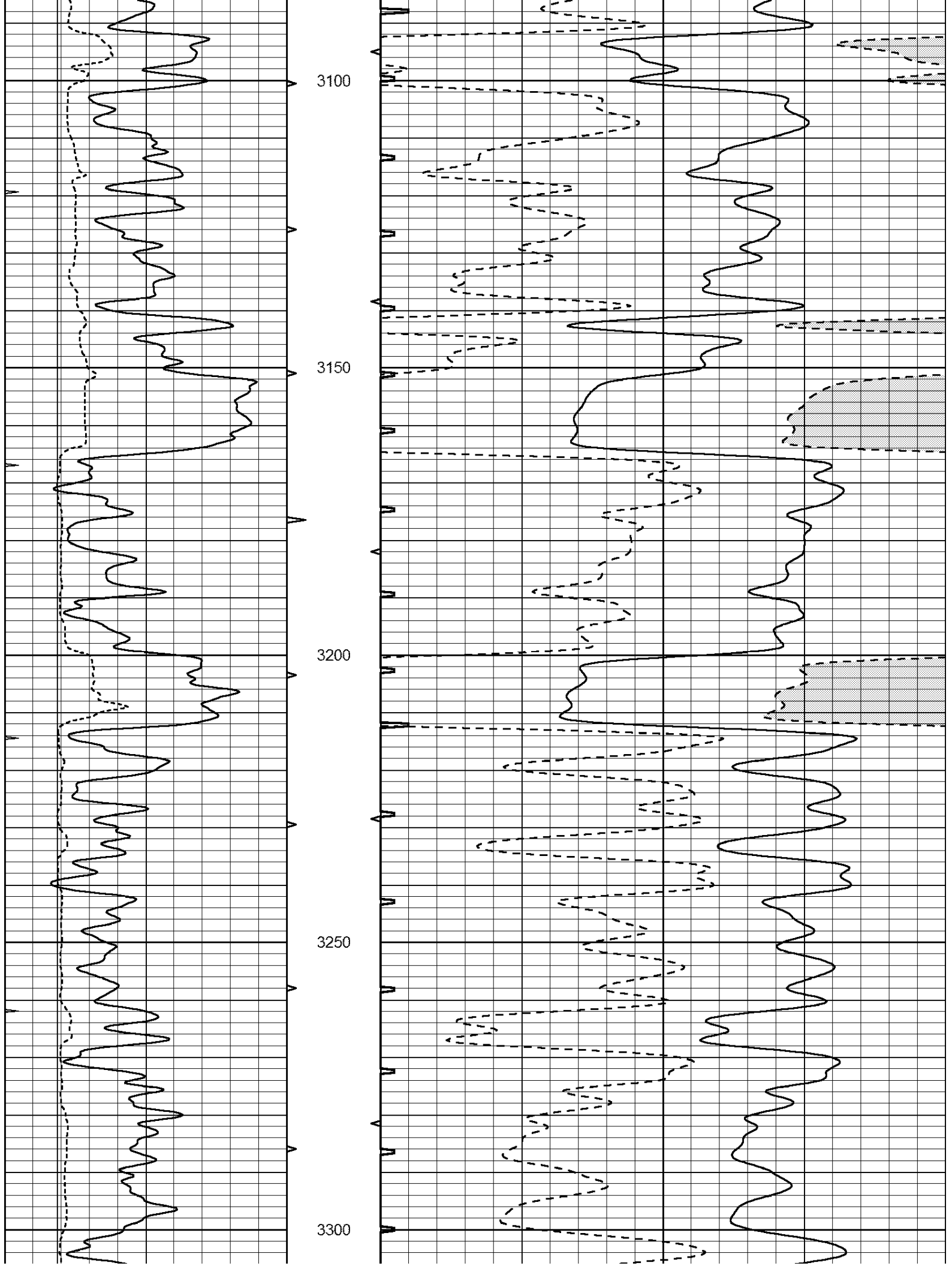




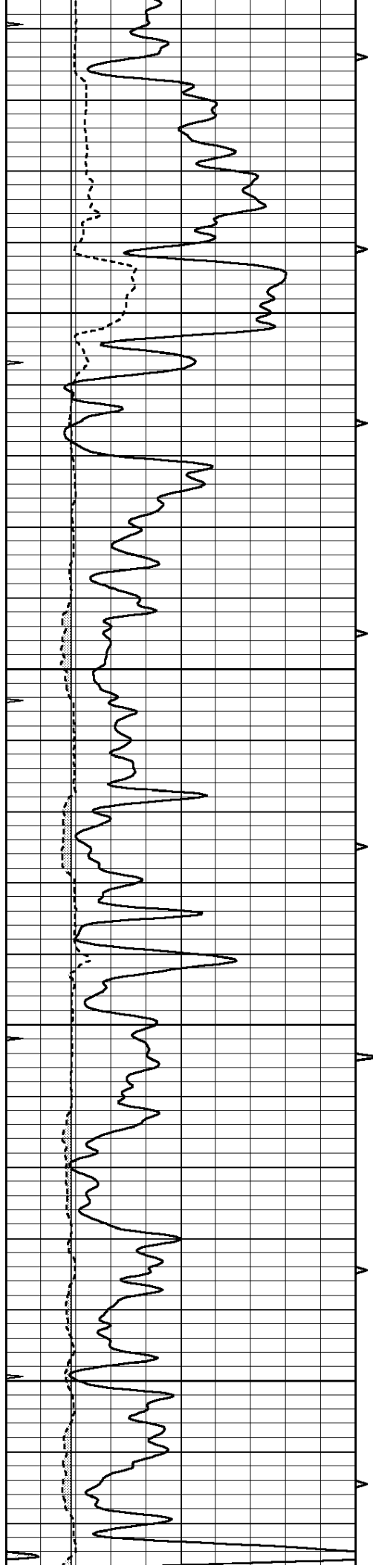










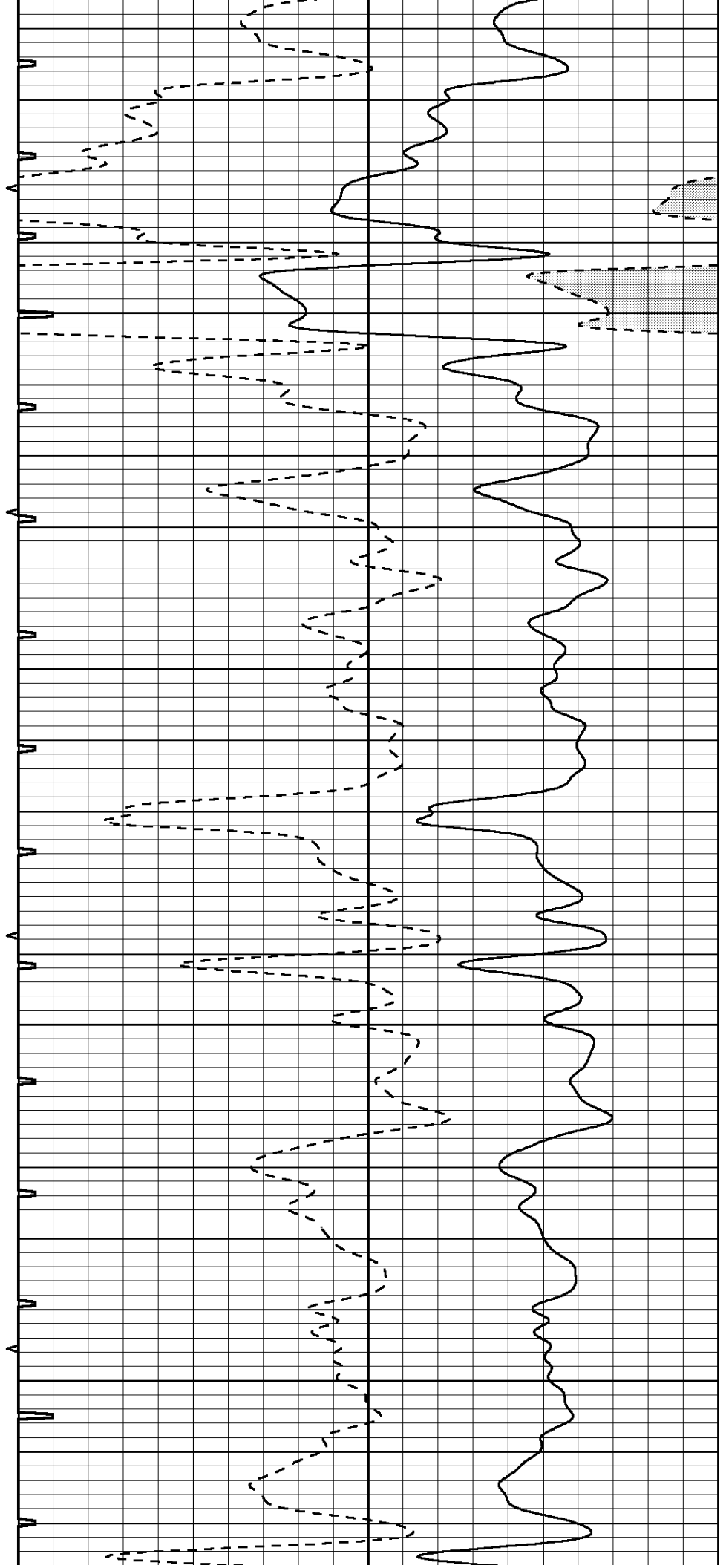


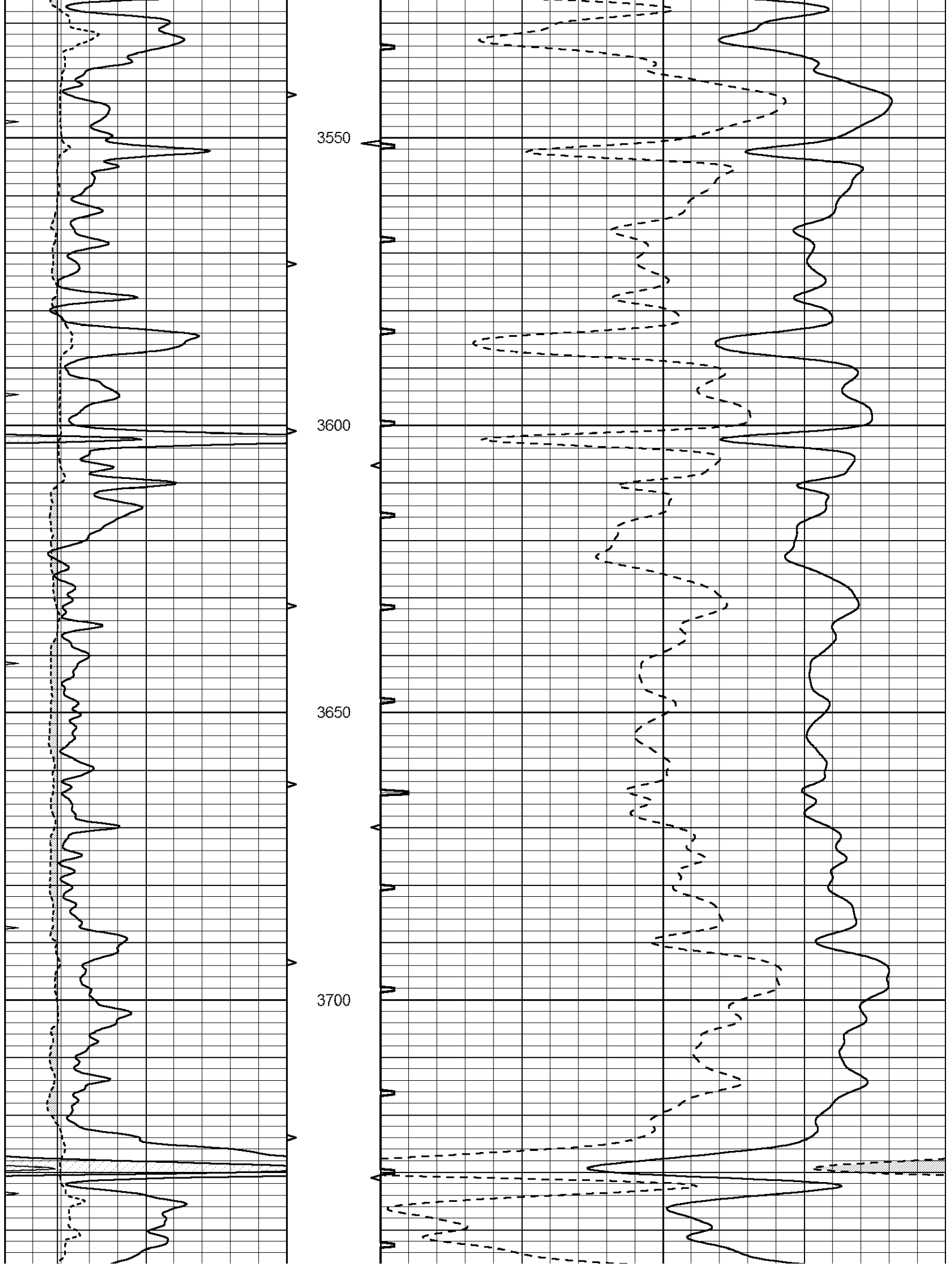
3350

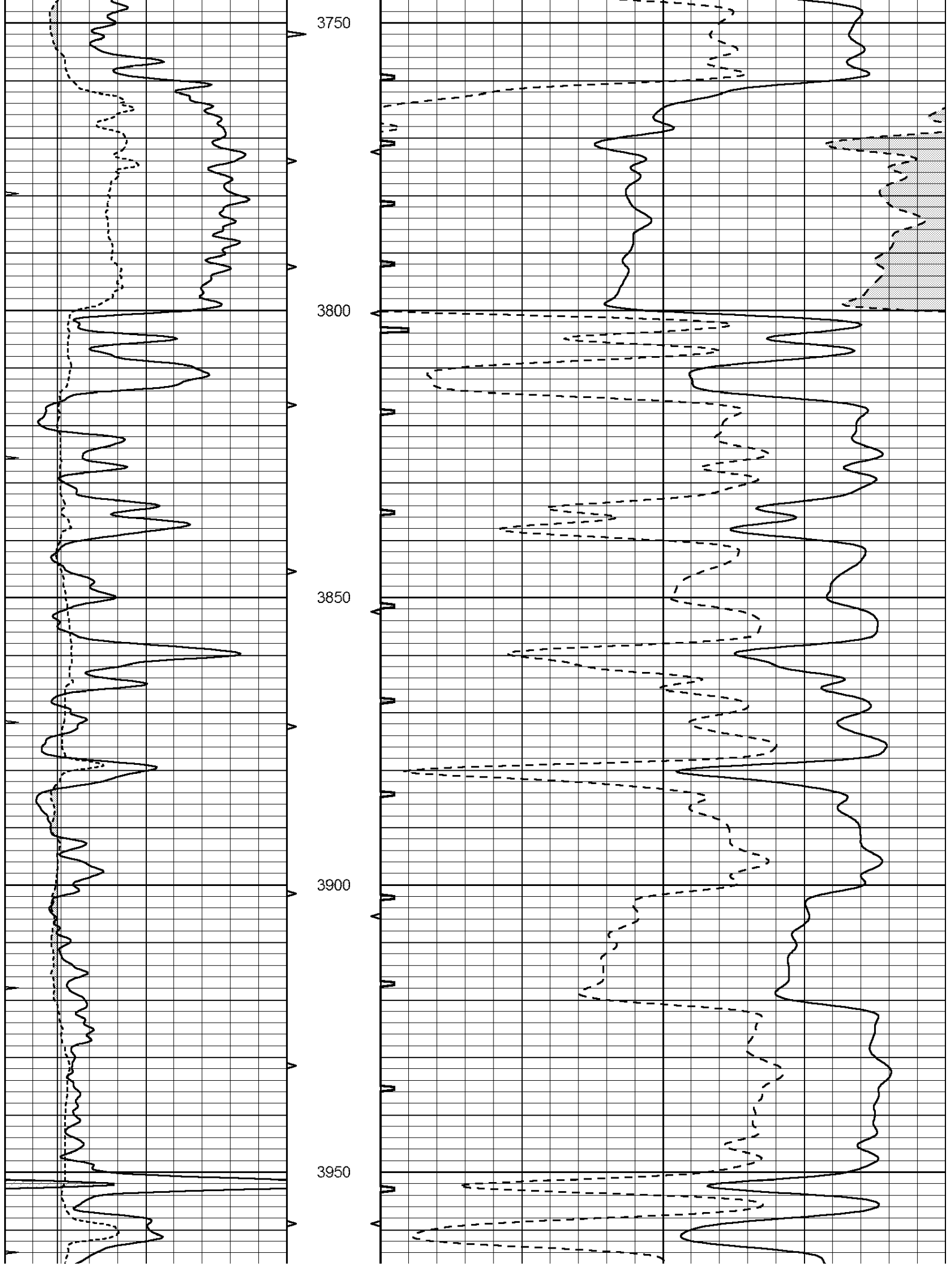
3400

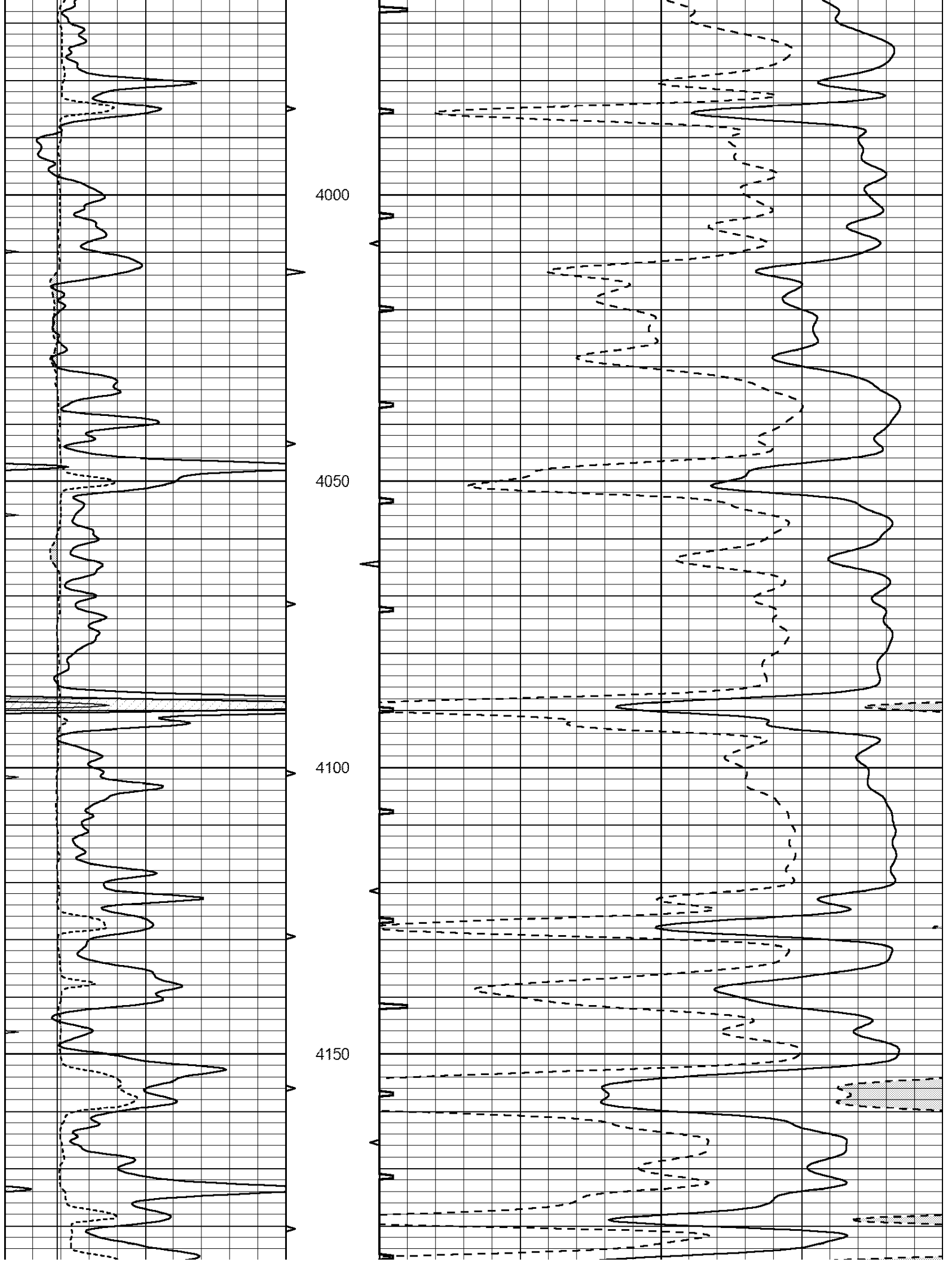
3450

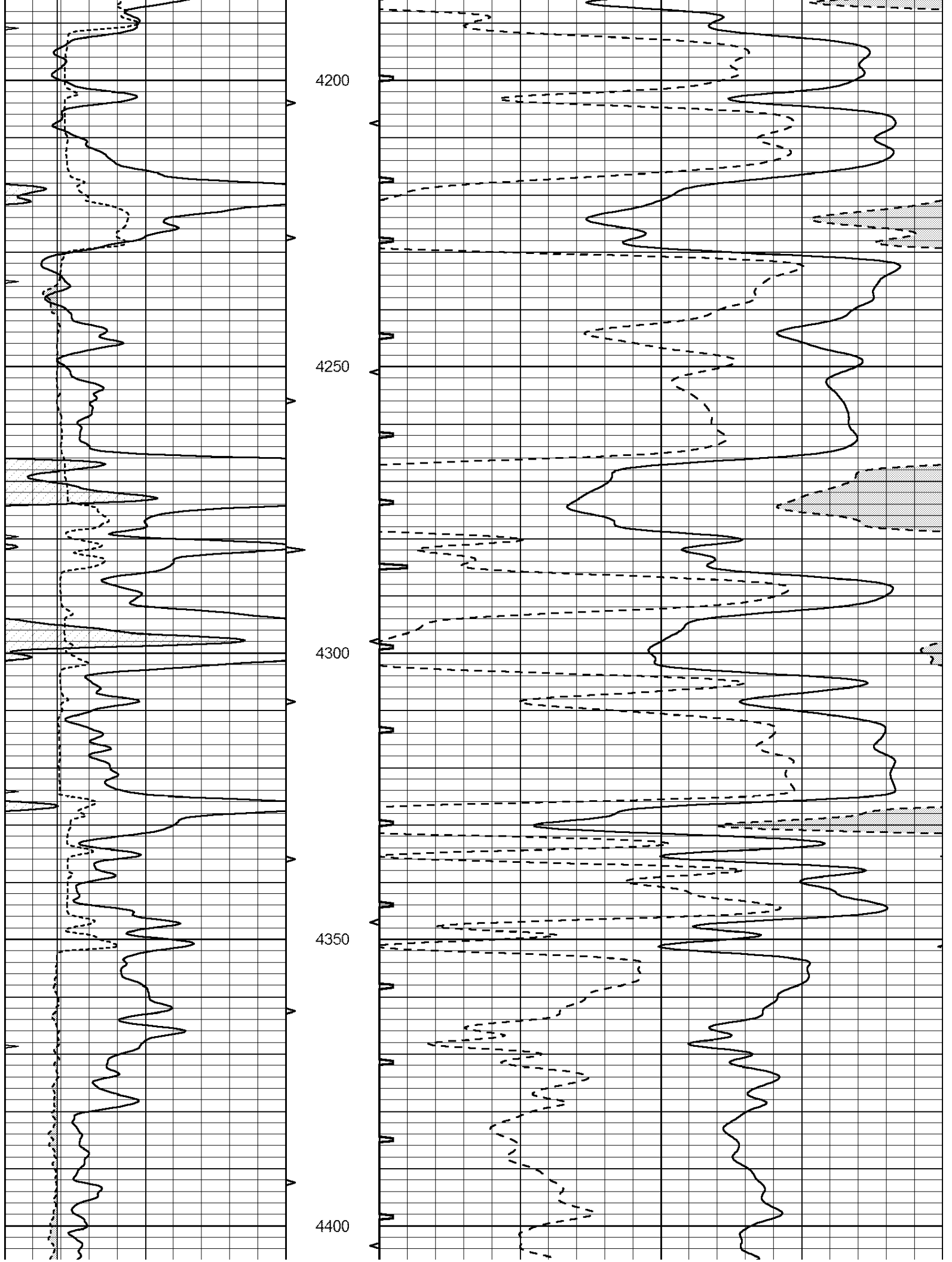
3500

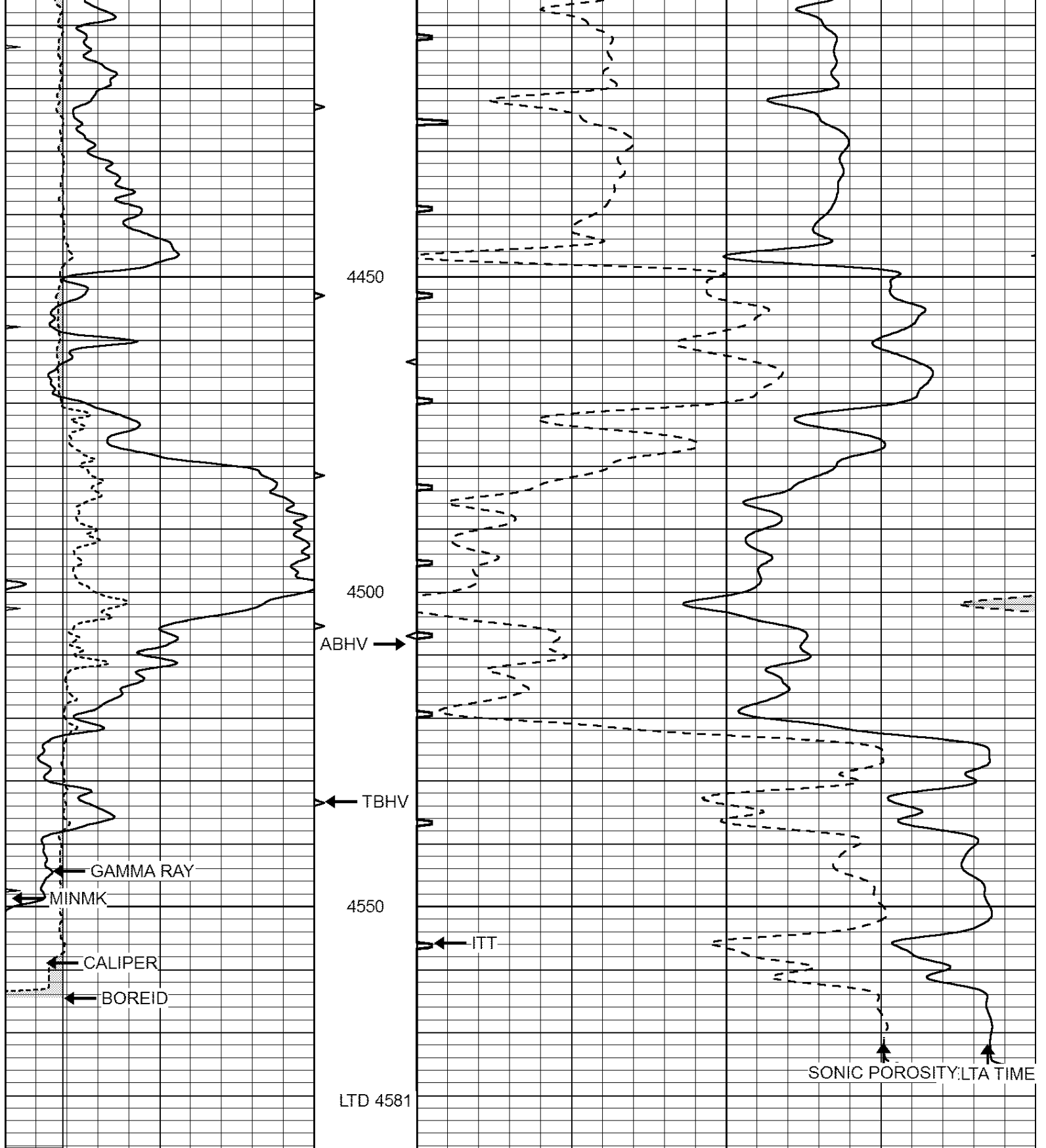












0	GAMMA RAY (GAPI)	150	ABHV	140	DELTA TIME (usec/ft)	40	
6	CALIPER (in)	16	10 (ft3)	0	30	SONIC POROSITY (pu)	-10
0	MINMK	20	TBHV	0	ITT (msec)	20	
			0 (ft3)	10			

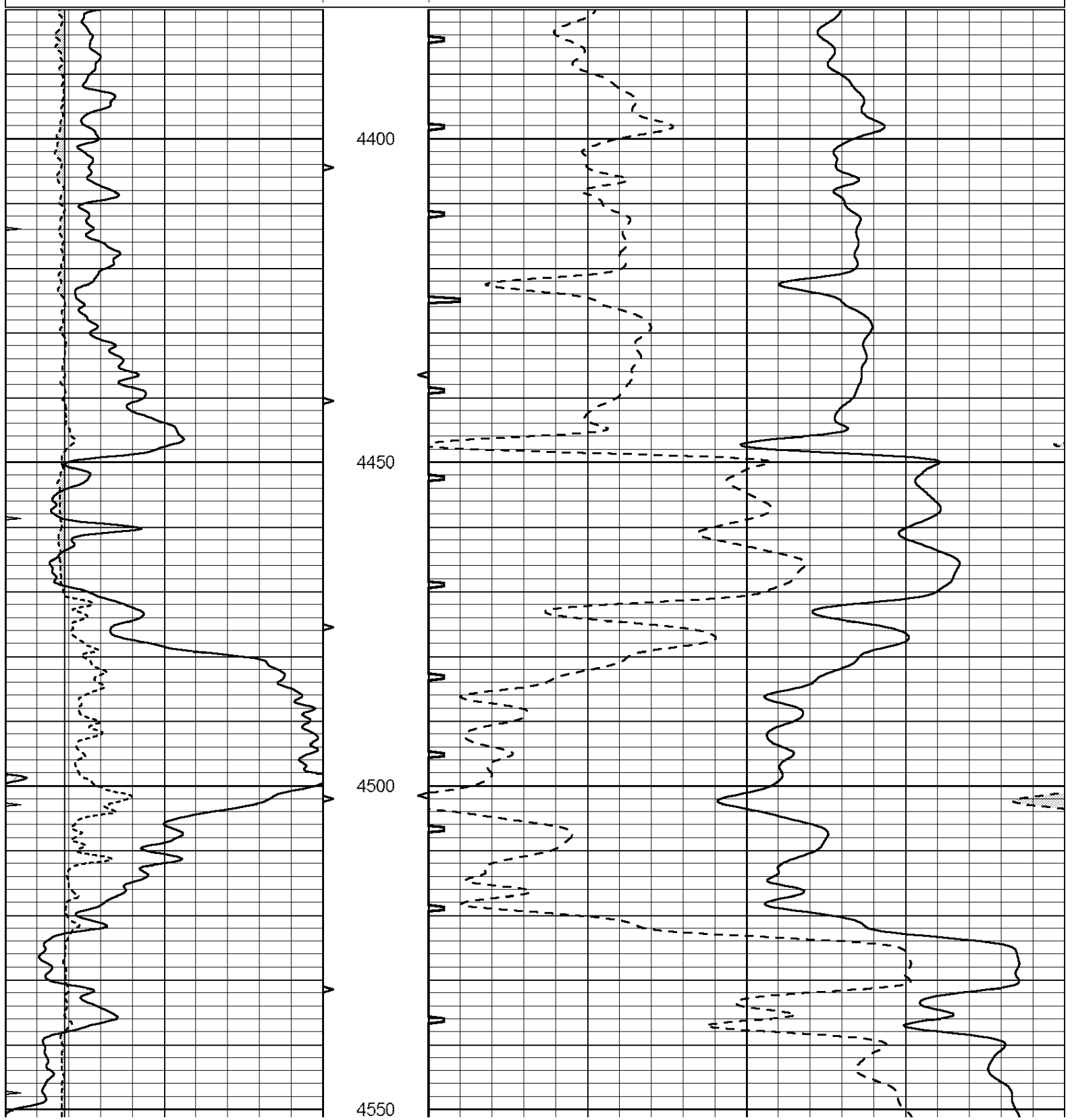


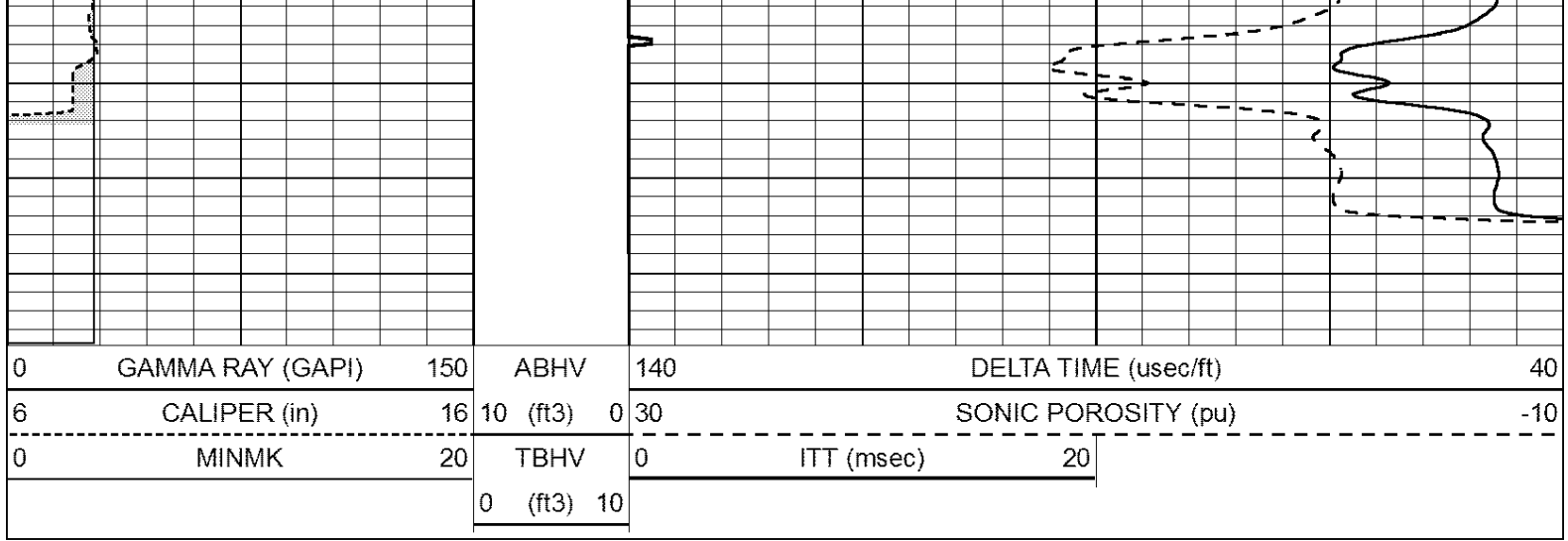
# REPEAT SECTION

# REFLECT SECTION

Database File: 2689ddn.db  
 Dataset Pathname: pass4RP  
 Presentation Format: \_slt  
 Dataset Creation: Thu Jul 05 10:49:06 2018  
 Charted by: Depth in Feet scaled 1:240

0	GAMMA RAY (GAPI)	150	ABHV	140	DELTA TIME (usec/ft)	40
6	CALIPER (in)	16	10 (ft3)	0	SONIC POROSITY (pu)	-10
0	MINMK	20	TBHV	0	ITT (msec)	20
			0 (ft3)	10		





### Calibration Report

Database File: 2689ddn.db  
 Dataset Pathname: pass4RP  
 Dataset Creation: Thu Jul 05 10:49:06 2018

### MICRO Calibration Report

Serial Number: MICRO4  
 Tool Model: PROBE  
 Performed: Thu Jul 05 09:30:00 2018

Caliper Calibration: Gain=3.729      Offset=-17.125

References	Low Cal	High Cal
Readings	7.000	14.000
	6.470	8.348

1.5" Calibration: Gain=39.297      Offset=-3.175

References	Low Cal	High Cal
Readings	0.000	20.000
	0.013	1.517

2" Calibration: Gain=51.168      Offset=-3.264

References	Low Cal	High Cal
Readings	0.000	20.000
	0.015	1.180

### Gamma Ray Calibration Report

Serial Number: GR5  
 Tool Model: OPEN  
 Performed: Mon Jul 02 20:05:37 2018

Calibrator Value: 1.0      GAPI

Background Reading:	0.0	cps
Calibrator Reading:	1.0	cps

Sensitivity: 0.8000      GAPI/cps