



DUAL INDUCTION LOG

Company YOUNGER ENERGY COMPANY
 Well MOSIER - BAUER UNIT #1
 Field HURRAY NORTH
 County PAWNEE
 State KANSAS

Company YOUNGER ENERGY COMPANY
 Well MOSIER - BAUER UNIT #1
 Field HURRAY NORTH
 County PAWNEE State KANSAS

Location: API # : 15-145-21820-0000
 2250' FSL & 2550' FWL
 SE - NE - NE - SW
 Permanent Datum GROUND LEVEL Elevation 1957
 Log Measured From KELLY BUSHING 13 A.G.L.
 Drilling Measured From KELLY BUSHING
 SEC 27 TWP 21S RGE 15W
 Other Services CDL/CNL MEL
 Elevation K.B. 1970 D.F. 1968 G.L. 1957

Date	8/5/16		
Run Number	ONE		
Depth Driller	4010		
Depth Logger	4012		
Bottom Logged Interval	4010		
Top Log Interval	00		
Casing Driller	8 5/8"@955'		
Casing Logger	955		
Bit Size	7 7/8"		
Type Fluid in Hole	CHEMICAL MUD	CHLORIDES 6,000 PPM	
Density / Viscosity	9.0/65		
pH / Fluid Loss	8.8/10.0		
Source of Sample	FLOWLINE		
Rim @ Meas. Temp	.600@80F		
Rmf @ Meas. Temp	.450@80F		
Rmc @ Meas. Temp	.720@80F		
Source of Rmf / Rmc	MEASUREMENT		
Rim @ BHT	.414@116F		
Time Circulation Stopped	3 HOURS		
Time Logger on Bottom	2:00 A.M.		
Maximum Recorded Temperature	116F		
Equipment Number	922339		
Location	HAYS, KANSAS		
Recorded By	JEFF LUEBBERS		
Witnessed By	KEITH REAVIS		

<<< Fold Here >>>

All interpretations are opinions based on inferences from electrical or other measurements and we cannot and do not guarantee the accuracy or correctness of any interpretation, and we shall not, except in the case of gross or willful negligence on our part, be liable or responsible for any loss, costs, damages, or expenses incurred or sustained by anyone resulting from any interpretation made by any of our officers, agents or employees. These interpretations are also subject to our general terms and conditions set out in our current Price Schedule.

Comments

THANK YOU FOR USING ELI WIRELINE HAYS, KANSAS (785) 628-6395
 DIRECTIONS
 LARNED, KS., S. TO (K-19) 7E. TO "40TH AVE.", 2N. TO "RD. N", 1/2E., N. INTO



MAIN SECTION

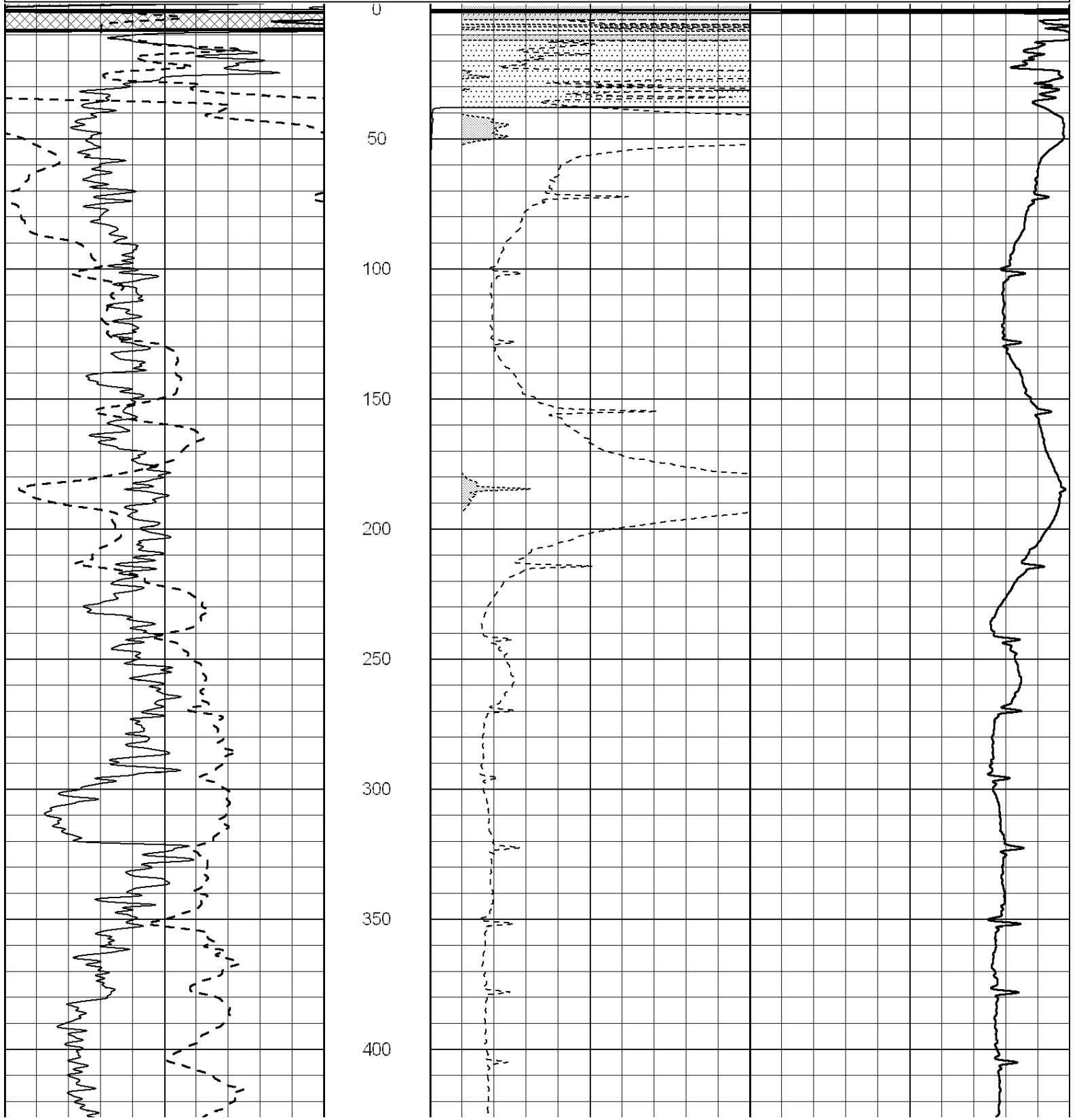
Database File: 30755ddn.db
 Dataset Pathname: pass3.3
 Presentation Format: dil2
 Dataset Creation: Fri Aug 05 03:29:55 2016 by Calc SOC 120430
 Charted by: Depth in Feet scaled 1:600

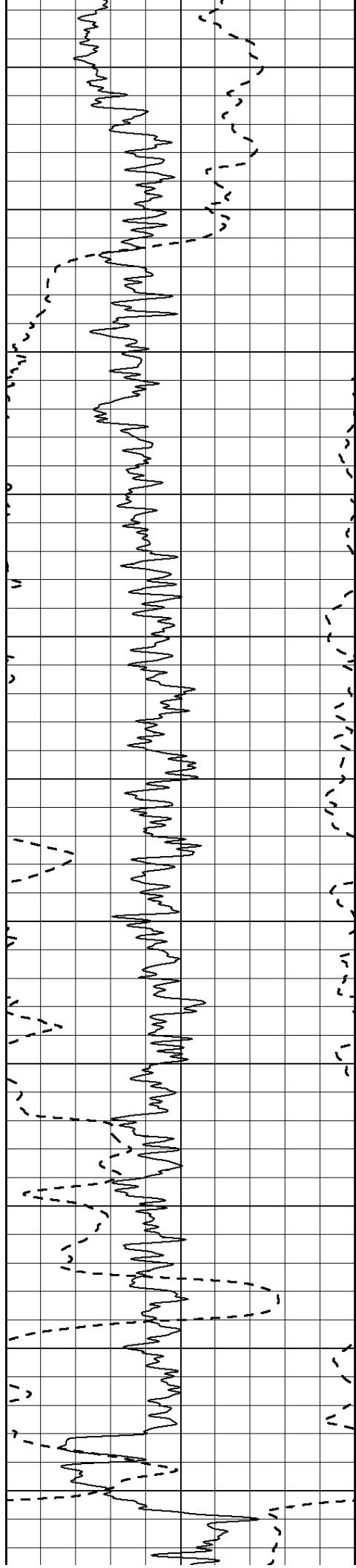
0	Gamma Ray (GAPI)	150
-100	SP (mV)	100
0	RWA (Ohm-m)	1

0	RLL3 (Ohm-m)	50
0	RILD (Ohm-m)	50

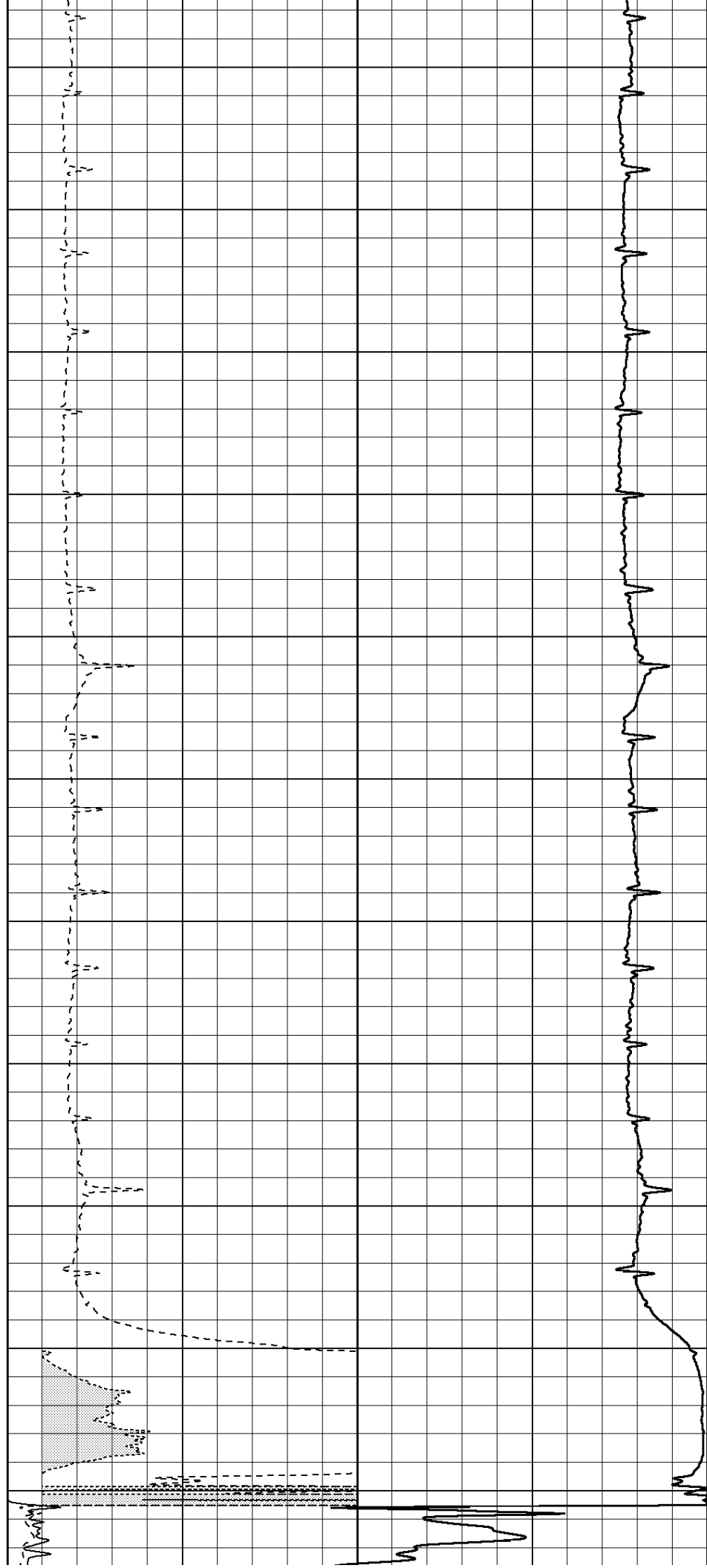
1000	CILD (mmho/m)	0
------	---------------	---

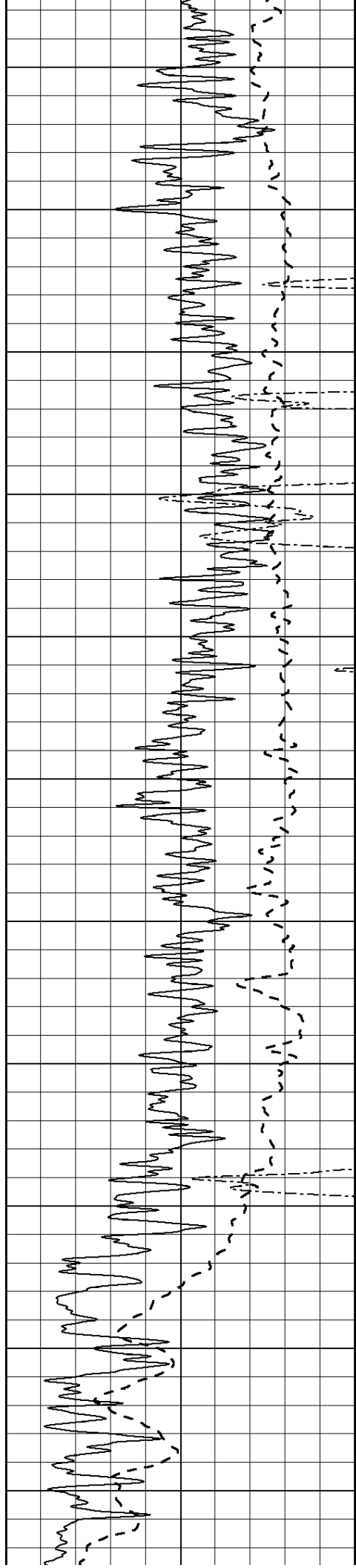
50	RILD X10 (Ohm-m)	500
50	RLL3 X10 (Ohm-m)	500



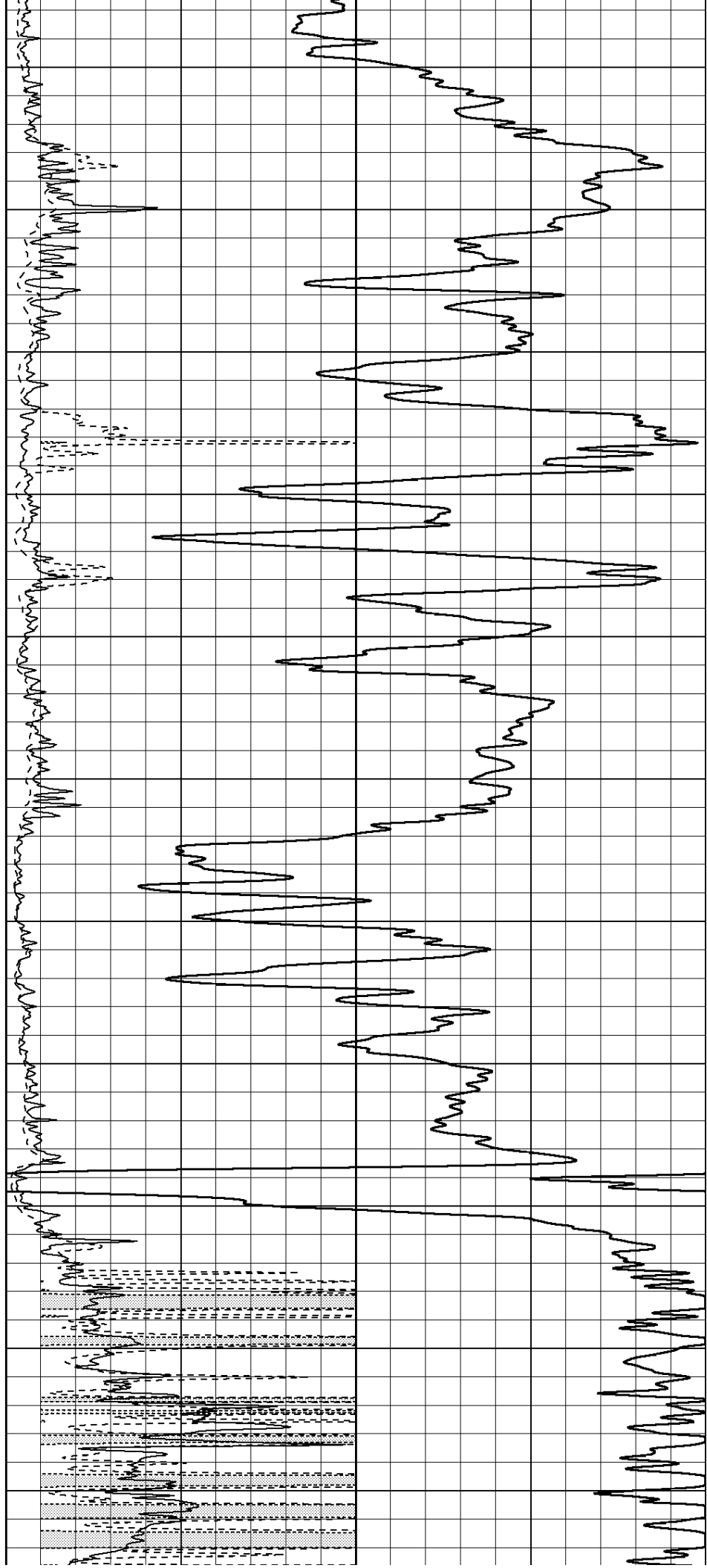


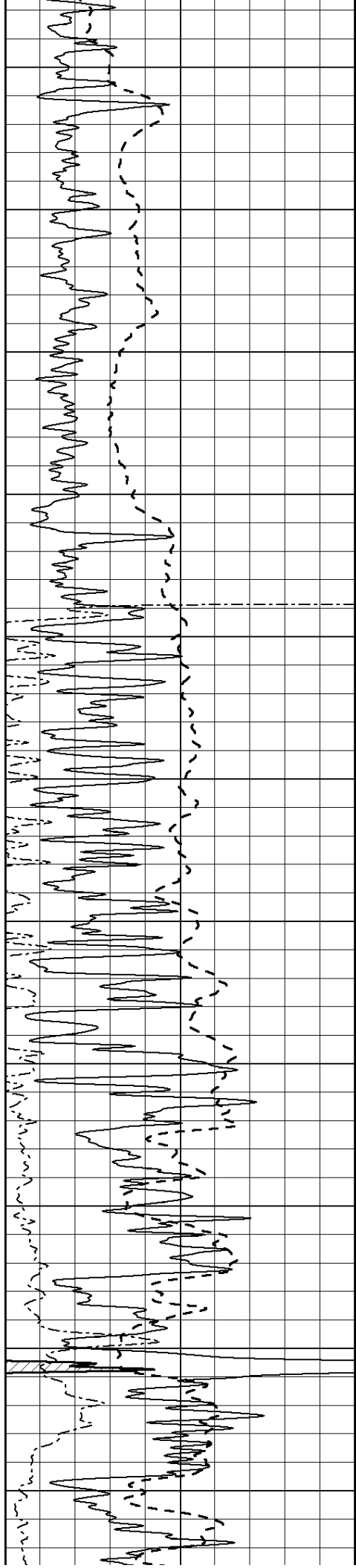
450
500
550
600
650
700
750
800
850
900
950





1000
1050
1100
1150
1200
1250
1300
1350
1400
1450
1500





1550

1600

1650

1700

1750

1800

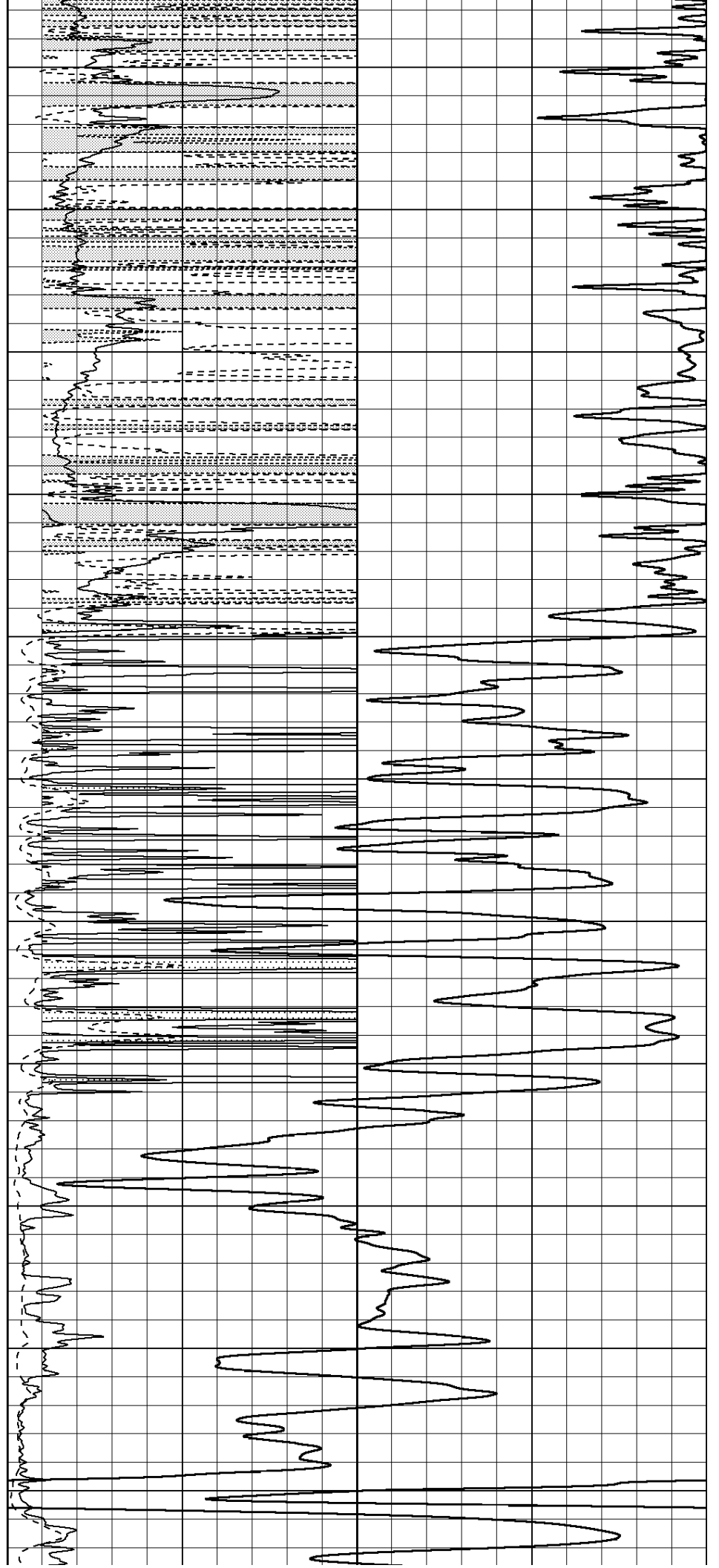
1850

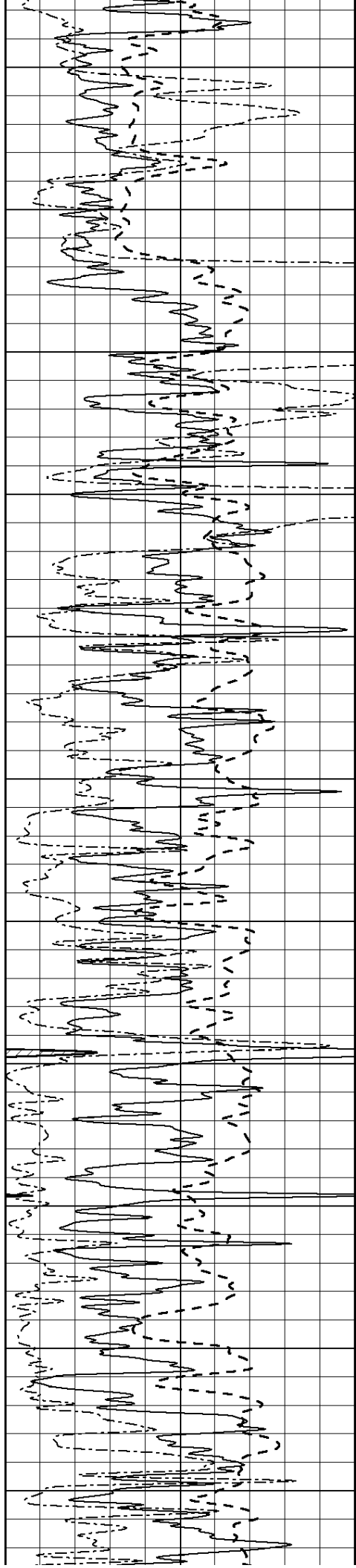
1900

1950

2000

2050





2100

2150

2200

2250

2300

2350

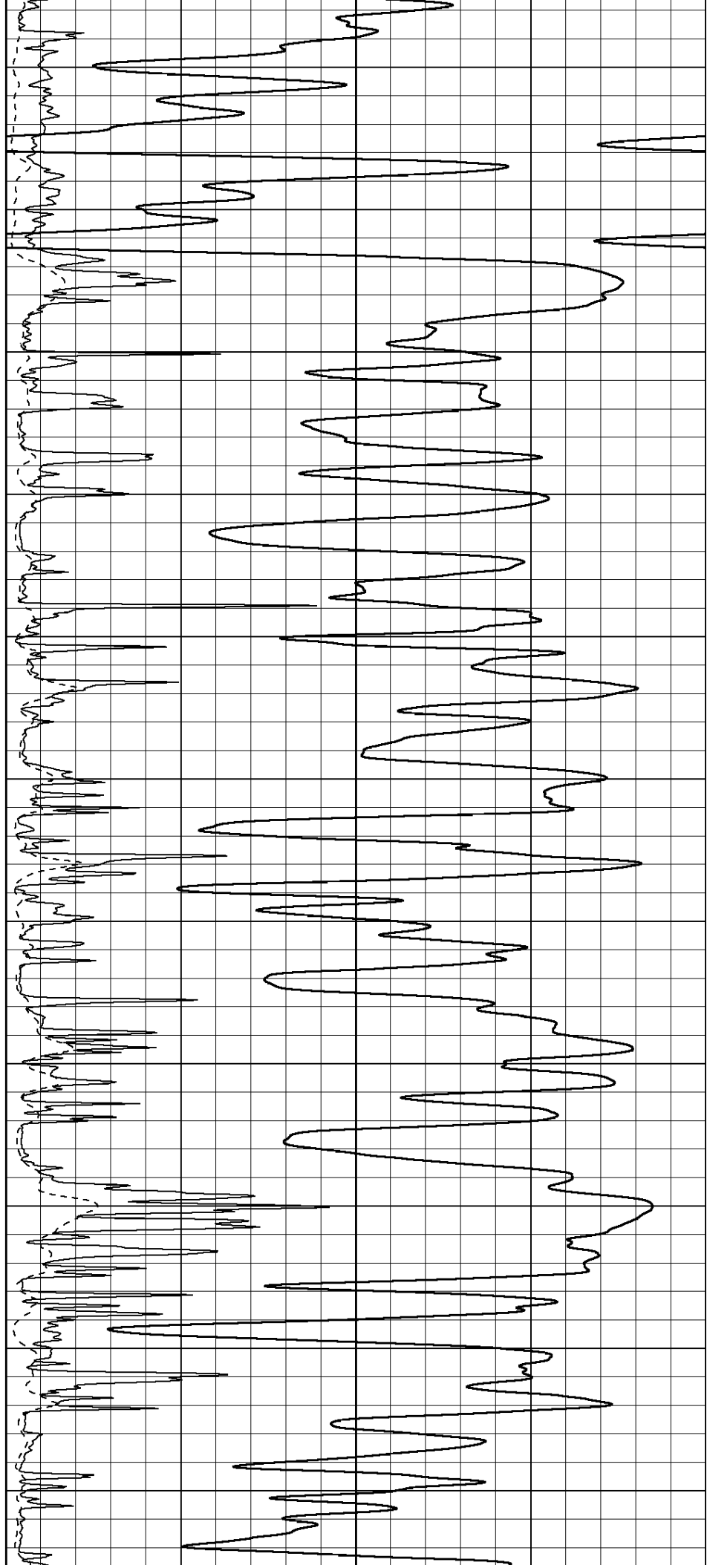
2400

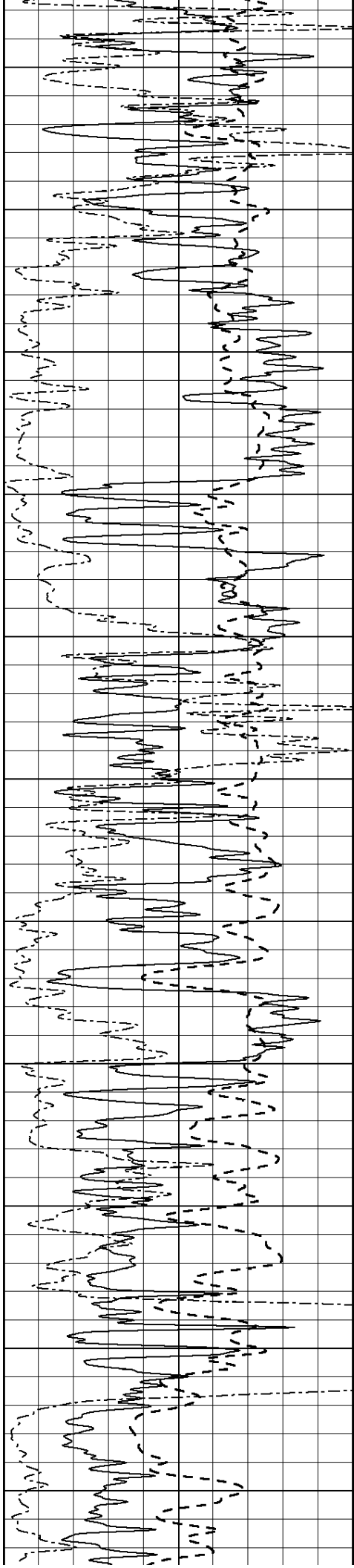
2450

2500

2550

2600





2650

2700

2750

2800

2850

2900

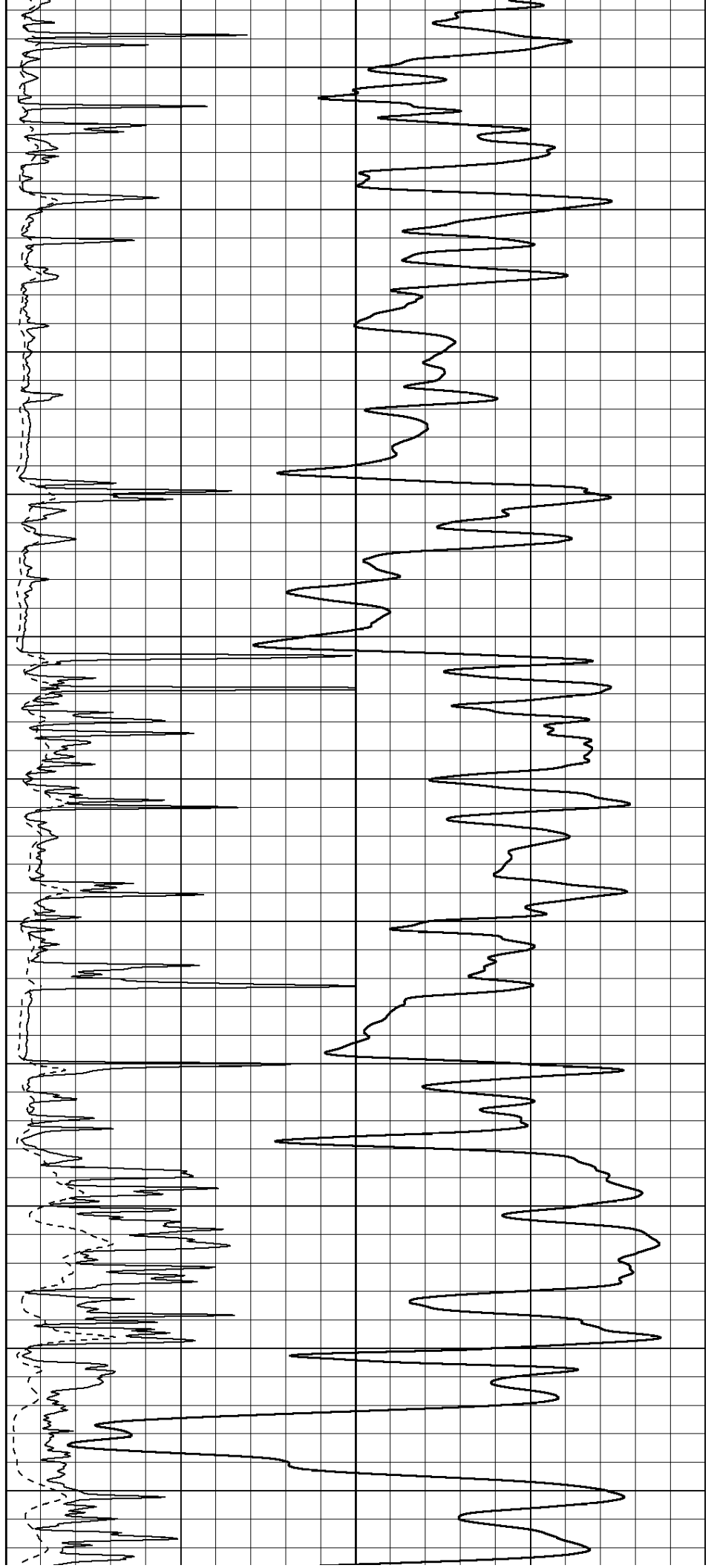
2950

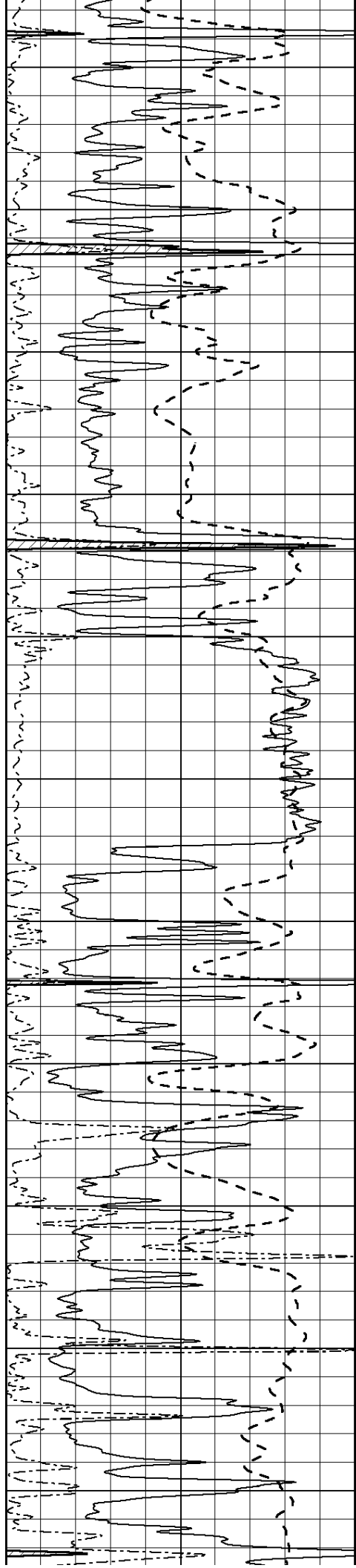
3000

3050

3100

3150





3200

3250

3300

3350

3400

3450

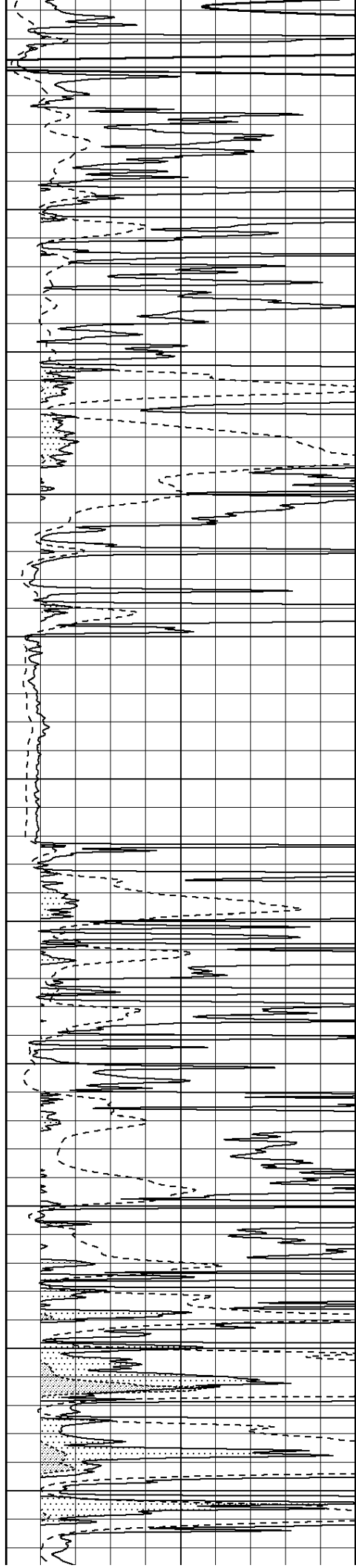
3500

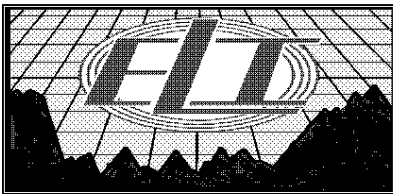
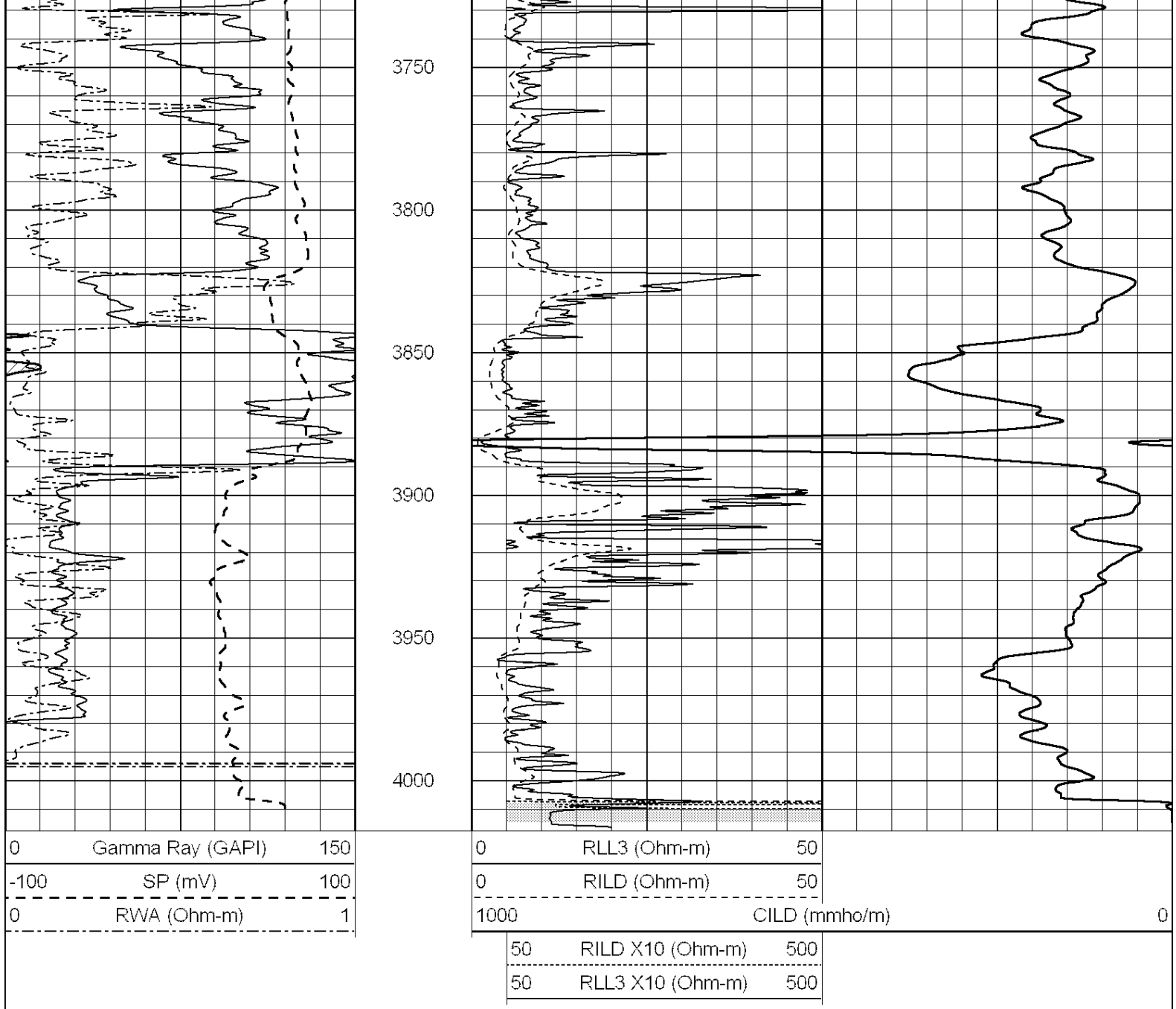
3550

3600

3650

3700





MAIN SECTION

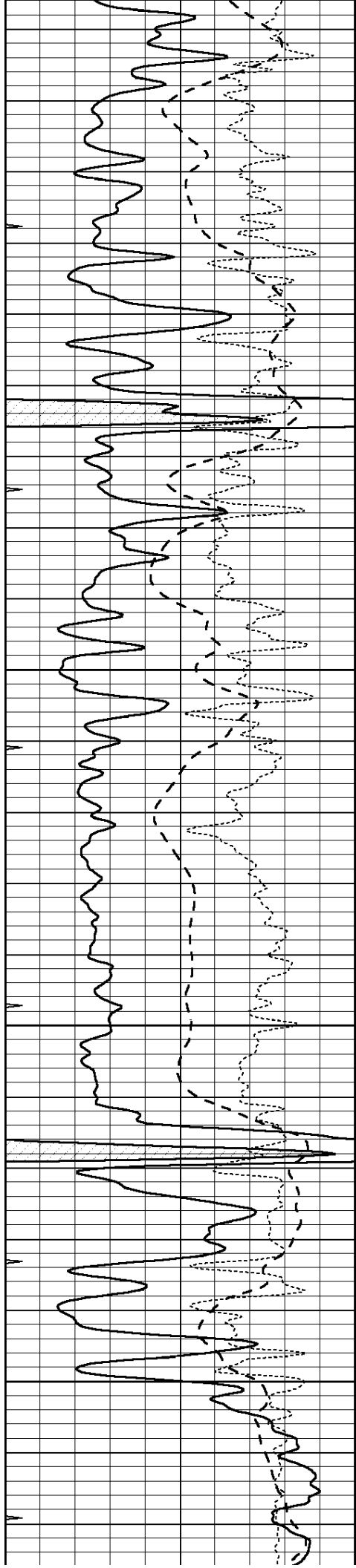
Database File: 30755ddn.db
 Dataset Pathname: pass3.3
 Presentation Format: dil
 Dataset Creation: Fri Aug 05 03:29:55 2016 by Calc SOC 120430
 Charted by: Depth in Feet scaled 1:240

0	GAMMA RAY (GAPI)	150	0.2	SHALLOW GUARD (Ohm-m)	2000
-100	SP (mV)	100	0.2	DEEP INDUCTION (Ohm-m)	2000
-250	Rxo/Rt	50	0.2	MEDIUM INDUCTION (Ohm-m)	2000
0	MINMK	20			



3200



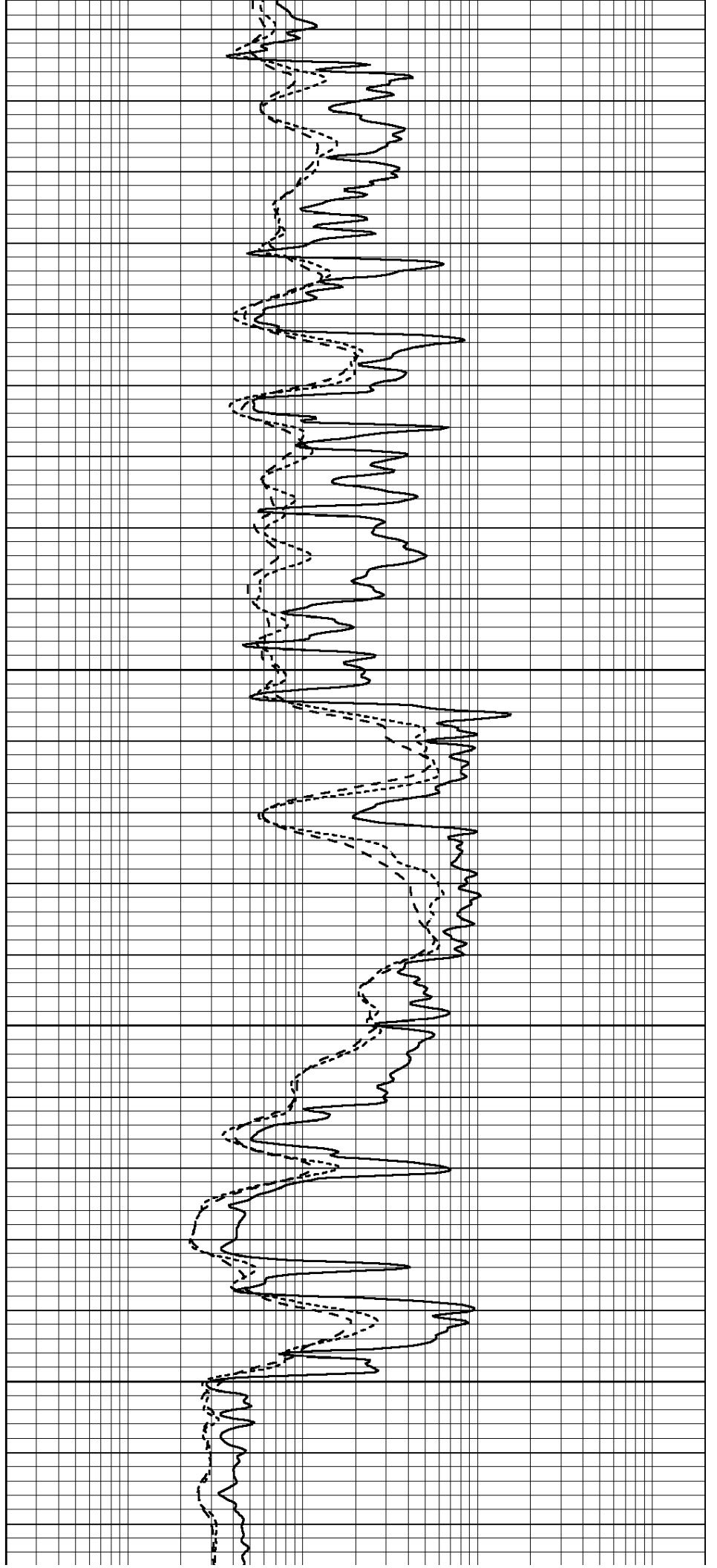


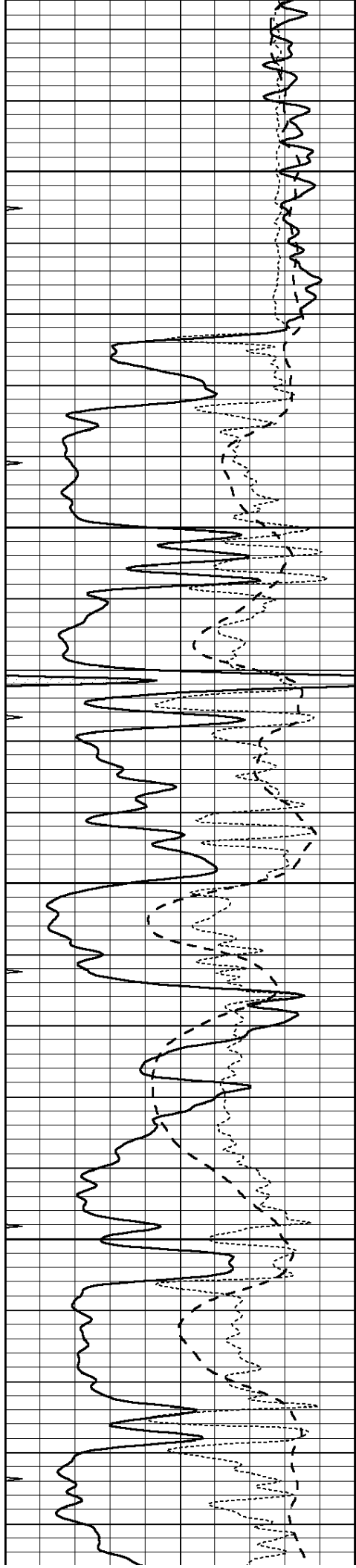
3250

3300

3350

3400



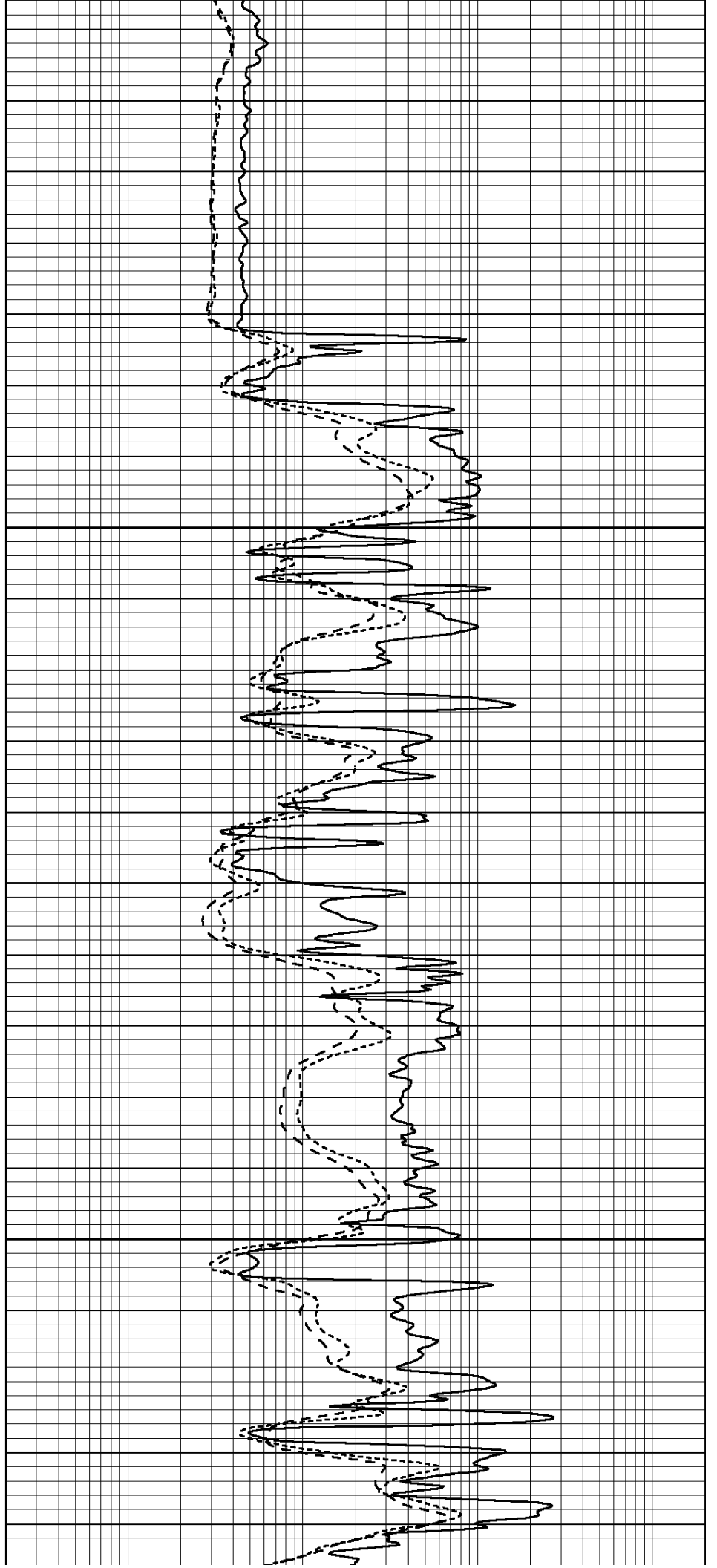


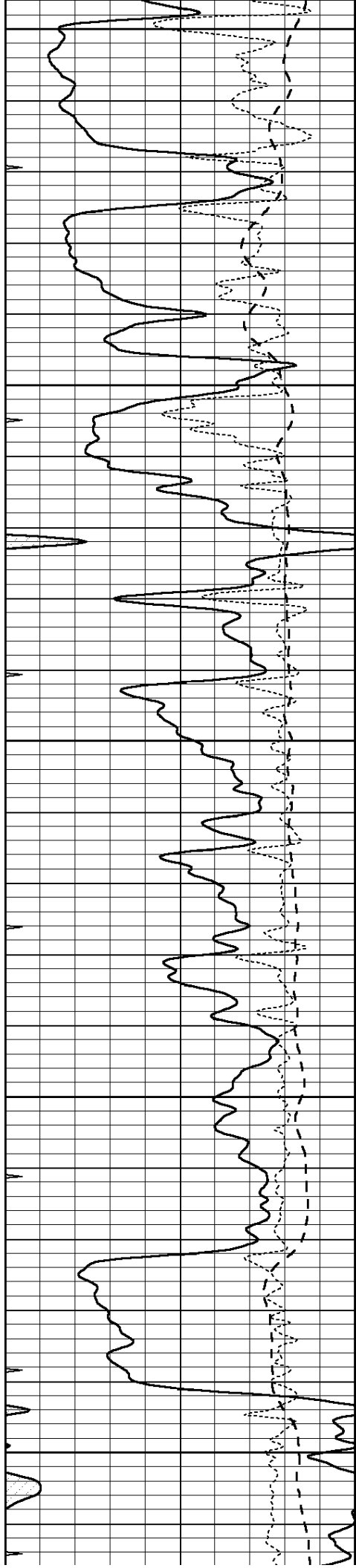
3450

3500

3550

3600





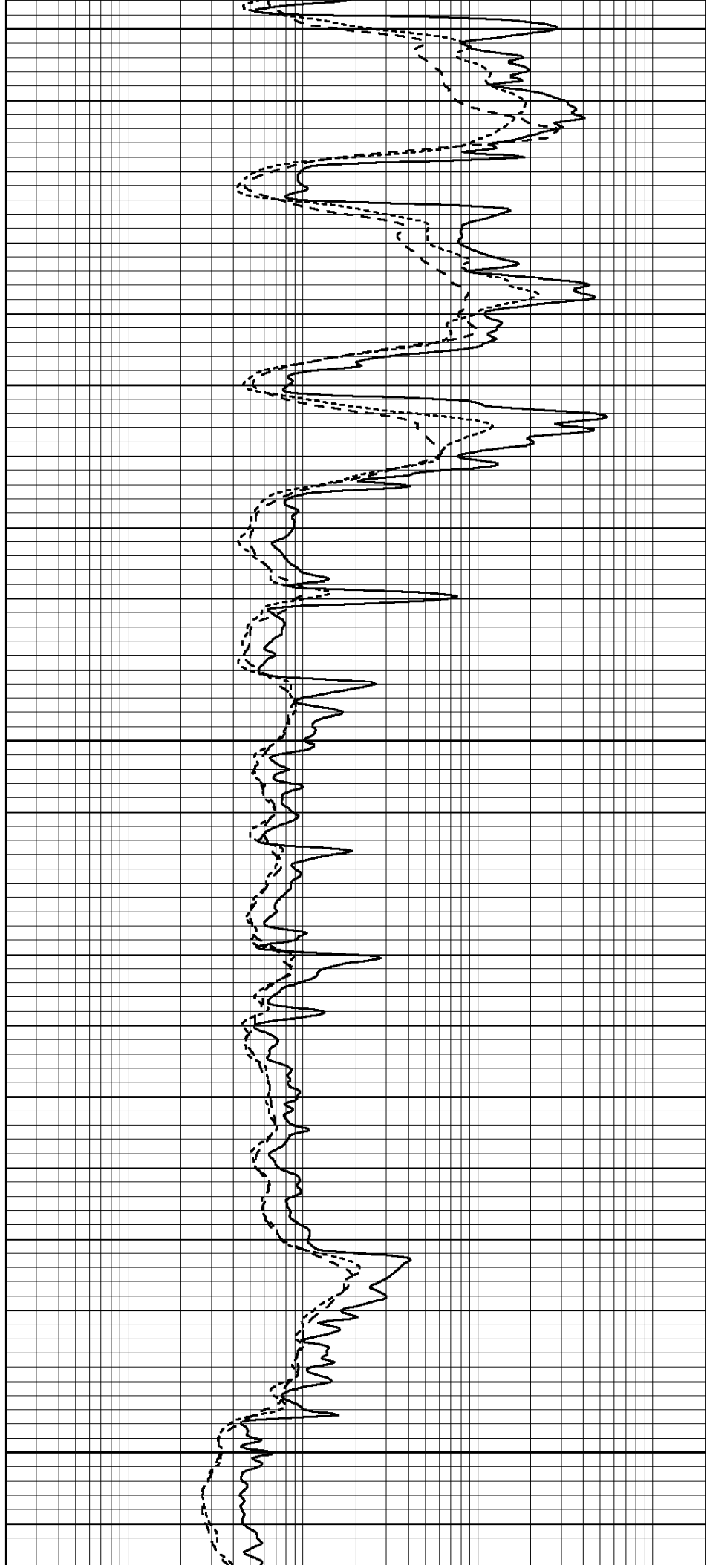
3650

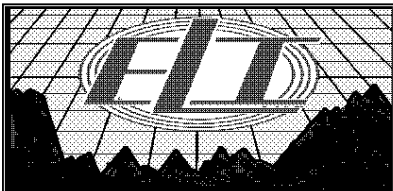
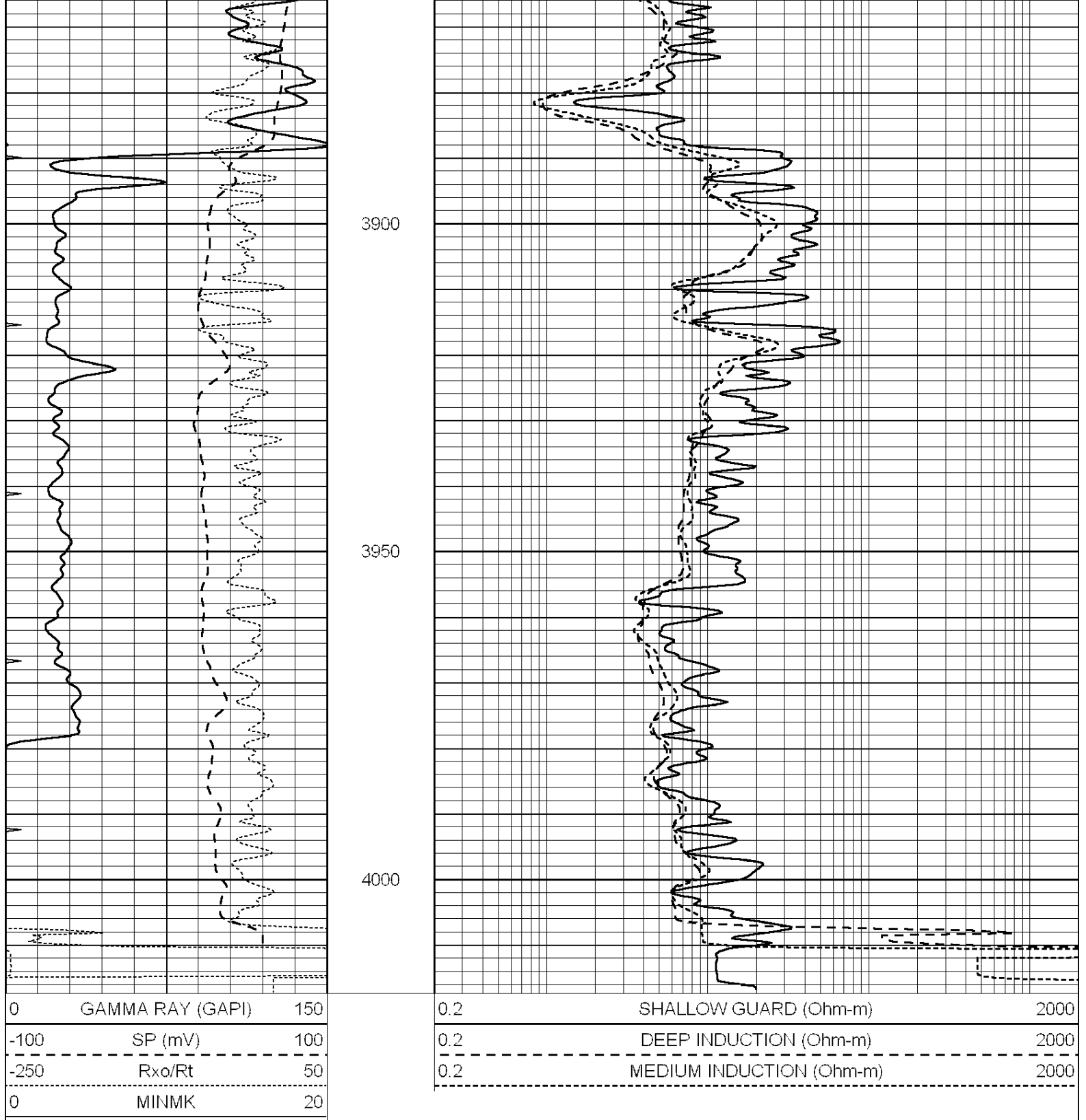
3700

3750

3800

3850



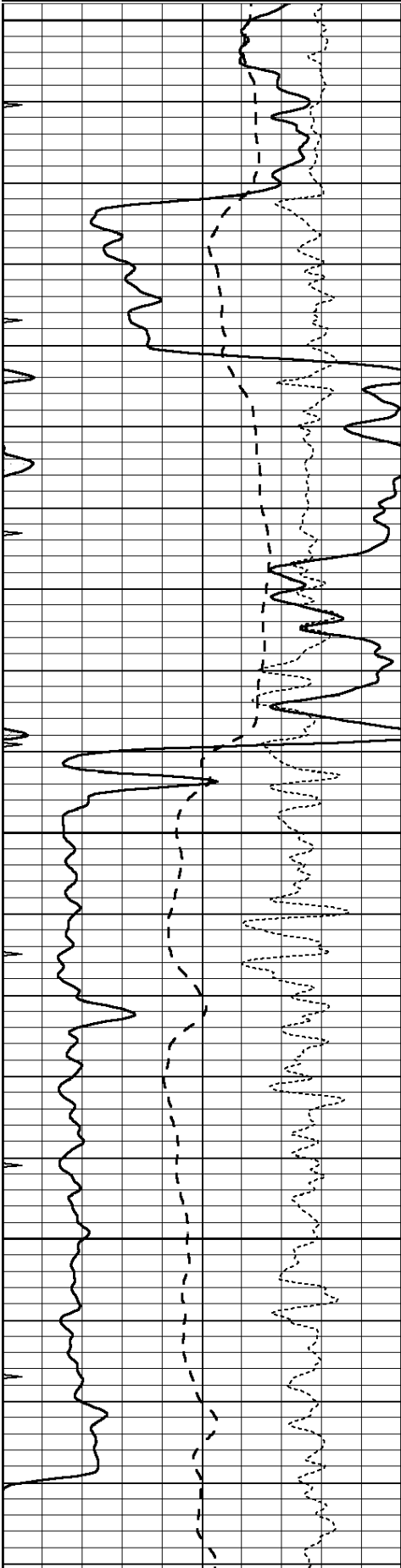


REPEAT SECTION

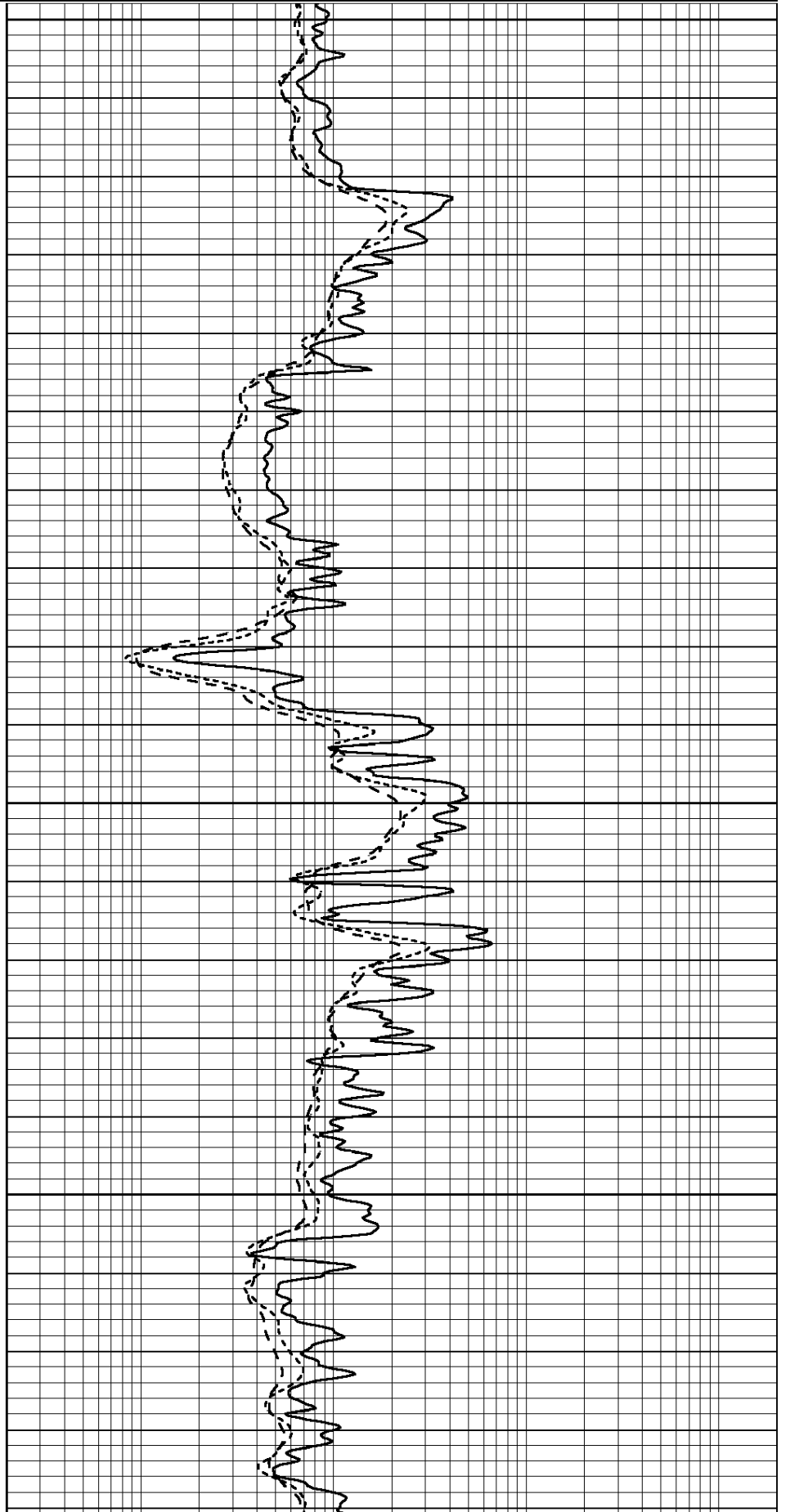
Database File: 30755ddn.db
 Dataset Pathname: pass2.2
 Presentation Format: _dil
 Dataset Creation: Fri Aug 05 02:52:40 2016 by Calc SOC 120430
 Charted by: Depth in Feet scaled 1:240

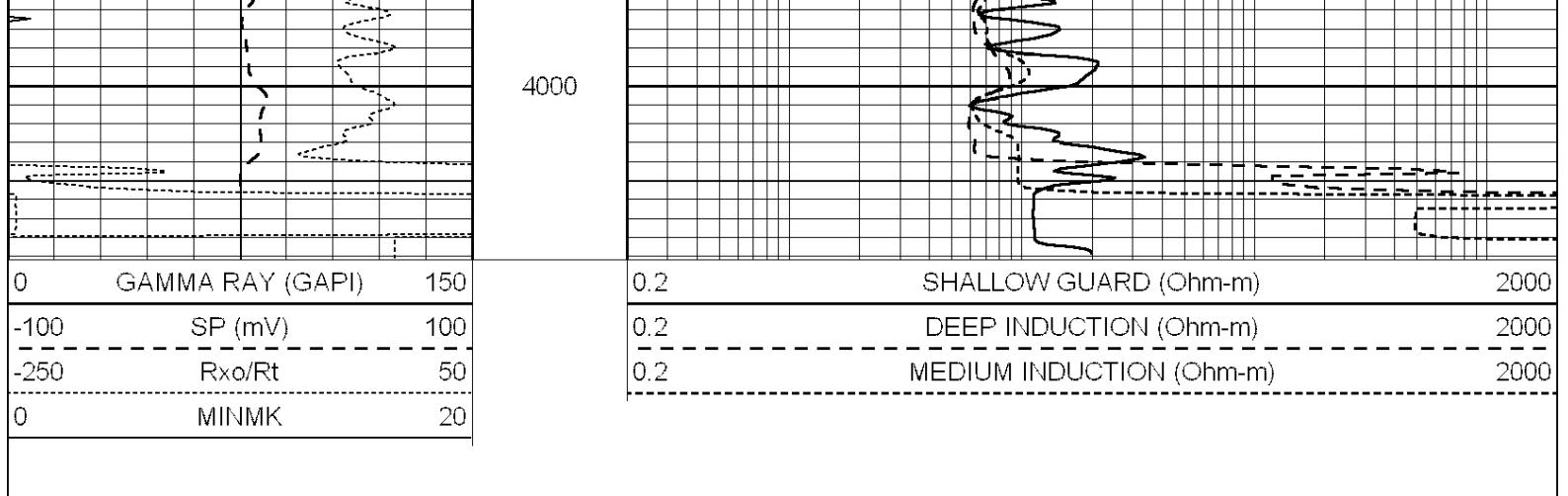
0	GAMMA RAY (GAPI)	150
-100	SP (mV)	100
-250	Rxo/Rt	50
0	MINMK	20

0.2	SHALLOW GUARD (Ohm-m)	2000
0.2	DEEP INDUCTION (Ohm-m)	2000
0.2	MEDIUM INDUCTION (Ohm-m)	2000



3800
3850
3900
3950





Calibration Report

Database File: 30755ddn.db
 Dataset Pathname: pass3.3
 Dataset Creation: Fri Aug 05 03:29:55 2016 by Calc SOC 120430

Dual Induction Calibration Report

Serial-Model: PROBE7-DILG
 Surface Cal Performed: Fri Jul 22 21:44:44 2016
 Downhole Cal Performed: Mon Jul 28 12:02:56 2008
 After Survey Verification Performed: Mon Jul 28 12:02:56 2008

Surface Calibration

Loop:	Readings			References			Results	
	Air	Loop		Air	Loop		m	b
Deep	-0.014	0.629	V	0.000	400.000	mmho/m	625.000	-7.000
Medium	0.039	0.728	V	0.000	464.000	mmho/m	675.000	-50.000
Internal:	Zero	Cal		Zero	Cal		m	b
Deep	0.011	0.610	V	0.000	400.000	mmho/m	667.135	-7.256
Medium	0.005	0.712	V	0.000	464.000	mmho/m	655.677	-3.102

Downhole Calibration

	Readings			References			Results	
	Zero	Cal		Zero	Cal		m'	b'
Deep	0.000	0.000	mmho/m	14.508	388.384	mmho/m	1.000	0.000
Medium	0.000	0.000	mmho/m	166.367	504.400	mmho/m	1.000	0.000
LL3		7.500	V		1400.000	Ohm-m		
		0.000	V		20.000	Ohm-m		
		-7.200	V		4000.000	mmho-m		

After Survey Verification

	Readings			Targets			Results	
	Zero	Cal		Zero	Cal		m'	b'
Deep	0.000	0.000	mmho/m	0.000	0.000	mmho/m	0.000	0.000
Medium	0.000	0.000	mmho/m	0.000	0.000	mmho/m	0.000	0.000
LL3		1.000	Ohm-m		1.000	Ohm-m		
		0.000	Ohm-m		0.000	Ohm-m		
		1.000	mmho-m		1.000	mmho-m		

Litho Density Calibration Report
 Serial: 004N Model: PRB

	Background	Magnesium	Aluminum	Sandstone	
Window 1	1378.8	10804.6	3492.0	12453.4	cps
Window 2	1262.4	9313.5	3076.7	10594.7	cps
Window 3	1077.6	5668.7	2076.0	6314.8	cps
Window 4	306.4	313.0	306.4	315.6	cps
Long Space	0.0	8051.0	1814.3	9332.3	cps
Short Space	1.9	1706.1	1146.0	1707.6	cps
Rho		1.7100	2.5900	1.3800	g/cc
Pe		0.0000	2.5700	1.5500	
Rib Angle	: 45.0	Rib Slope	: 1.002	Density/Spine Ratio	: 0.571
Spine Angle	: 75.0	Spine Slope	: 3.745	Spine Intercept	: -18.9

Before Survey Verification

Performed Wed Dec 31 18:00:00 1969

	Background	Magnesium	Aluminum	Sandstone	
Window 1	0.0	0.0	0.0	0.0	cps
Window 2	0.0	0.0	0.0	0.0	cps
Window 3	0.0	0.0	0.0	0.0	cps
Window 4	0.0	0.0	0.0	0.0	cps
Long Space	0.0	0.0	0.0	0.0	cps
Short Space	0.0	0.0	0.0	0.0	cps
Measured Rho		0.0000	0.0000	0.0000	g/cc
Measured Correction		0.0000	0.0000	0.0000	g/cc
Measured Pe			0.0000	0.0000	

After Survey Verification

Performed Wed Dec 31 18:00:00 1969

	Background	Magnesium	Aluminum	Sandstone	
Window 1	0.0	0.0	0.0	0.0	cps
Window 2	0.0	0.0	0.0	0.0	cps
Window 3	0.0	0.0	0.0	0.0	cps
Window 4	0.0	0.0	0.0	0.0	cps
Long Space	0.0	0.0	0.0	0.0	cps
Short Space	0.0	0.0	0.0	0.0	cps
Measured Rho		0.0000	0.0000	0.0000	g/cc
Measured Correction		0.0000	0.0000	0.0000	g/cc
Measured Pe			0.0000	0.0000	

Compensated Neutron Calibration Report

Serial Number: 070808
Tool Model: Probe

PRE-SURVEY VERIFICATION

Detector	Readings	Measured	Target
Short Space	cps		
Long Space	cps	pu	pu

POST-SURVEY VERIFICATION

Detector	Readings	Measured	Target
Short Space	cps		
Long Space	cps	pu	pu

Gamma Ray Calibration Report

Serial Number: 070558
Tool Model: GEM-35

Tool Model: OPEN_GR
Performed: Fri Aug 05 02:18:33 2016

Calibrator Value: 1.0 GAPI

Background Reading: 0.0 cps

Calibrator Reading: 1.0 cps

Sensitivity: 0.2800 GAPI/cps