



MICRO LOG

Company YOUNGER ENERGY COMPANY  
Well MOSIER - BAUER UNIT #1  
Field HURRAY NORTH  
County PAWNEE  
State KANSAS

Company YOUNGER ENERGY COMPANY  
Well MOSIER - BAUER UNIT #1  
Field HURRAY NORTH  
County PAWNEE State KANSAS

Location: API # : 15-145-21820-0000  
2250' FSL & 2550' FWL  
SE - NE - NE - SW  
SEC 27 TWP 21S RGE 15W  
Permanent Datum GROUND LEVEL Elevation 1957  
Log Measured From KELLY BUSHING 13 A.G.L.  
Drilling Measured From KELLY BUSHING  
Other Services CDL/CNL DIL  
Elevation K.B. 1970 D.F. 1968 G.L. 1957

Date	8/5/16		
Run Number	TWO		
Depth Driller	4010		
Depth Logger	4012		
Bottom Logged Interval	4010		
Top Log Interval	3200		
Casing Driller	8 5/8" @ 955'		
Casing Logger	955		
Bit Size	7 7/8"		
Type Fluid in Hole	CHEMICAL MUD	CHLORIDES 6,000 PPM	
Density / Viscosity	9.0/65		
pH / Fluid Loss	8.8/10.0		
Source of Sample	FLOWLINE		
Rim @ Meas. Temp	.600 @ 80F		
Rmf @ Meas. Temp	.450 @ 80F		
Rmc @ Meas. Temp	.720 @ 80F		
Source of Rmf / Rmc	MEASUREMENT		
Rim @ BHT	.414 @ 116F		
Time Circulation Stopped	5 HOURS		
Time Logger on Bottom	2:00 A.M.		
Maximum Recorded Temperature	116F		
Equipment Number	922339		
Location	HAYS, KANSAS		
Recorded By	JEFF LUEBBERS		
Witnessed By	KEITH REAVIS		

<<< Fold Here >>>

All interpretations are opinions based on inferences from electrical or other measurements and we cannot and do not guarantee the accuracy or correctness of any interpretation, and we shall not, except in the case of gross or willful negligence on our part, be liable or responsible for any loss, costs, damages, or expenses incurred or sustained by anyone resulting from any interpretation made by any of our officers, agents or employees. These interpretations are also subject to our general terms and conditions set out in our current Price Schedule.

Comments

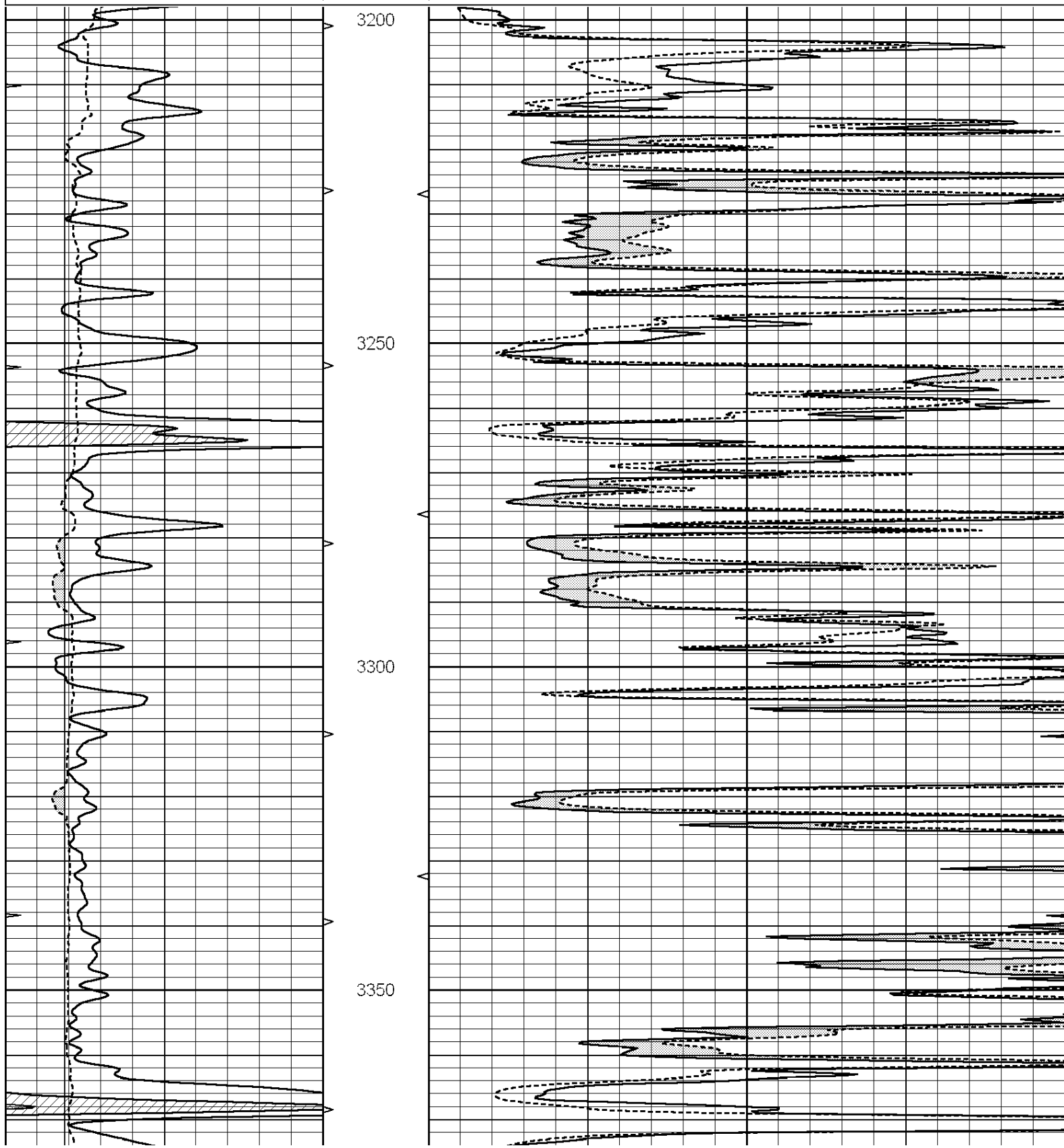
THANK YOU FOR USING ELI WIRELINE HAYS, KANSAS (785) 628-6395  
DIRECTIONS  
LARNED, KS., S. TO (K-19) 7E. TO "40TH AVE.", 2N. TO "RD. N", 1/2E., N. INTO

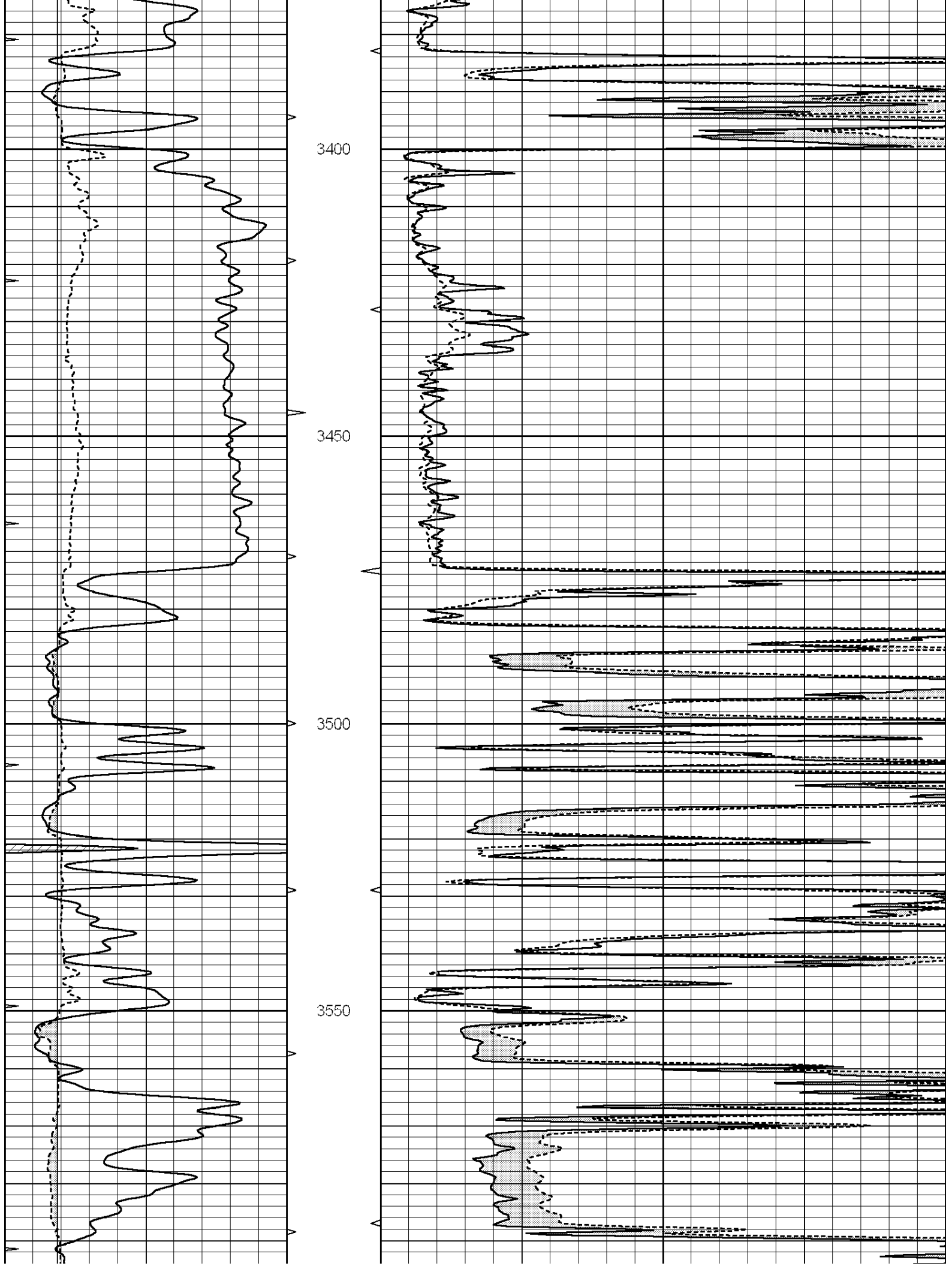


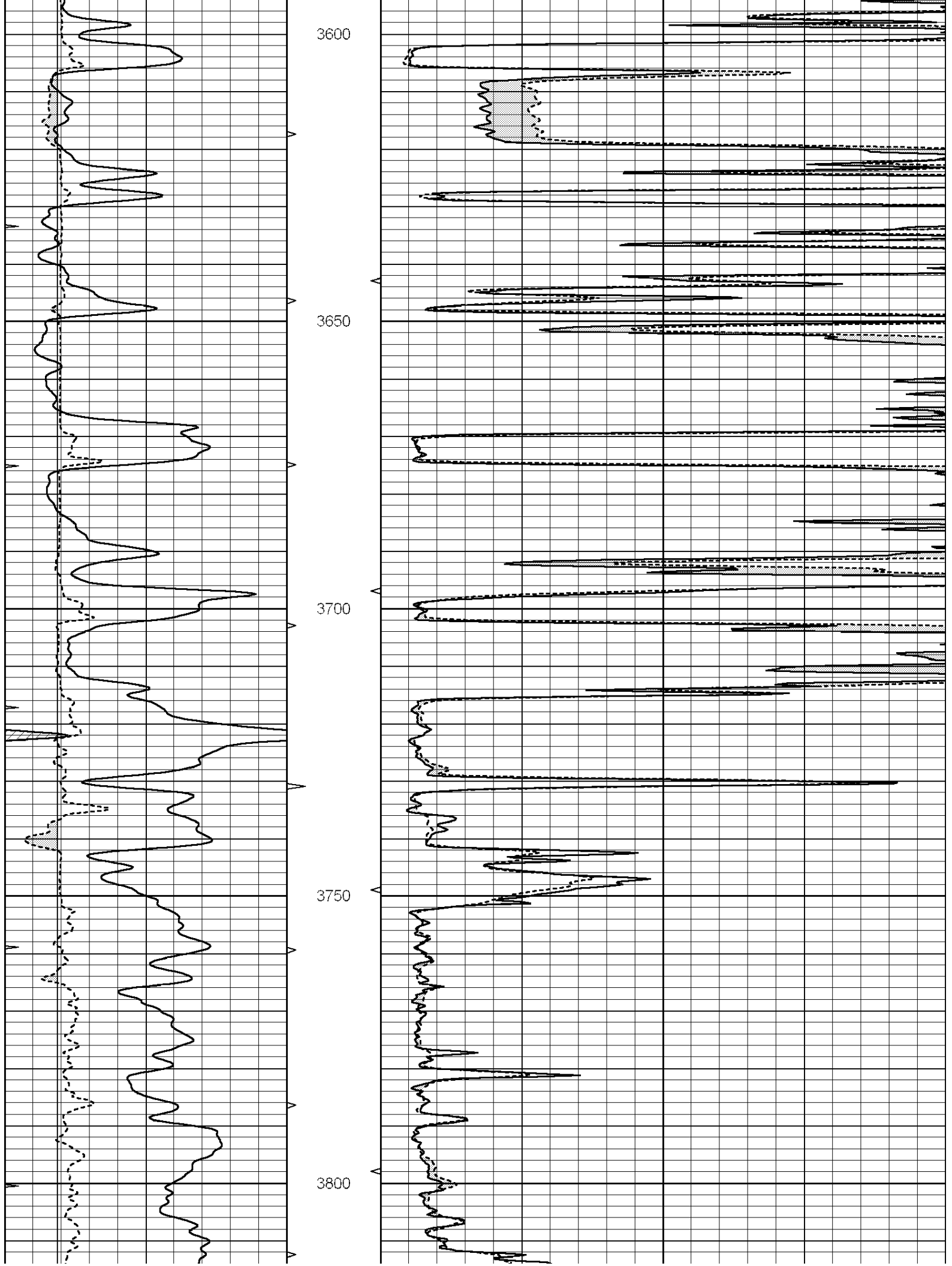
MAIN SECTION

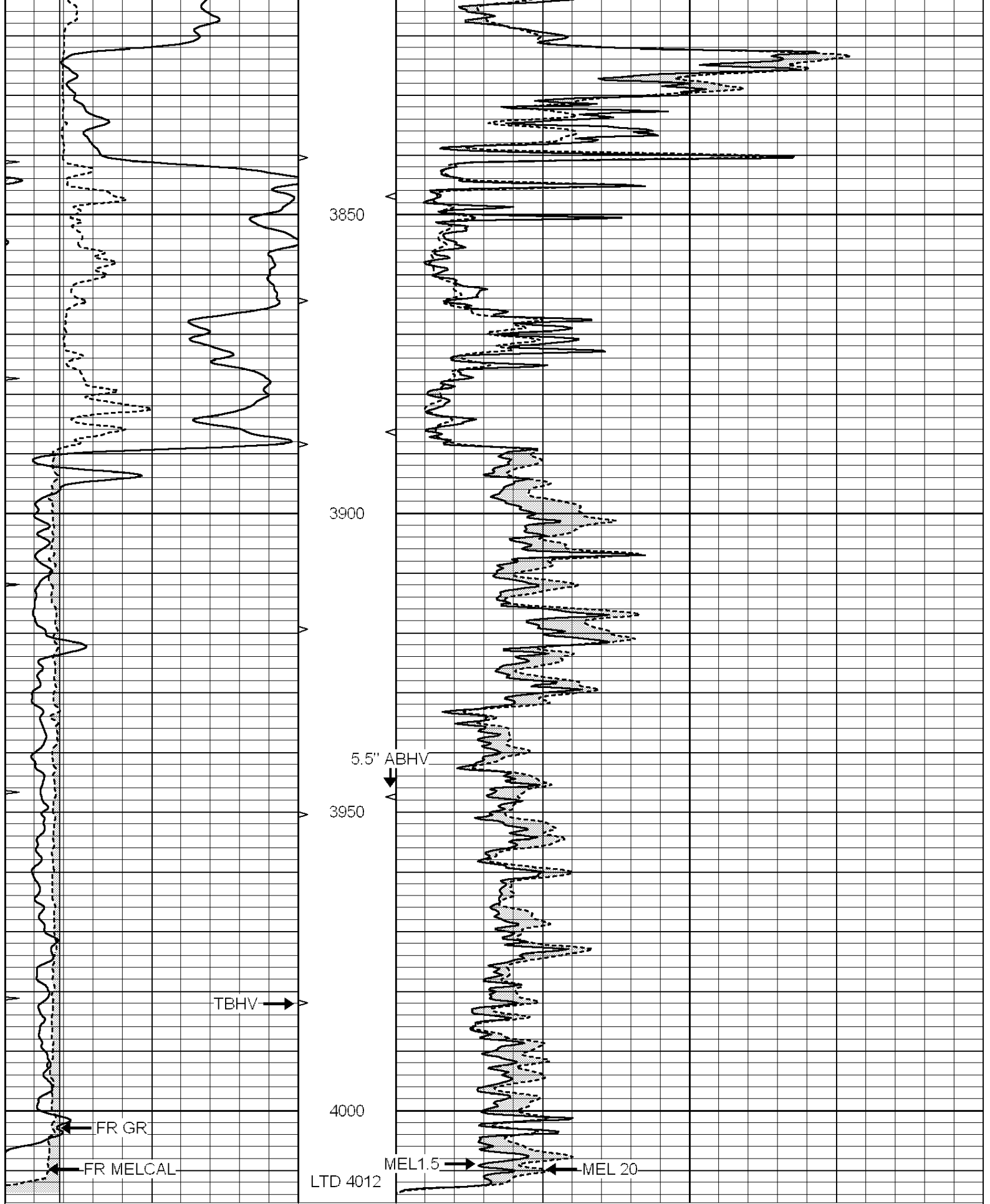
Database File: 30755ddn.db  
 Dataset Pathname: pass6.1  
 Presentation Format: micro  
 Dataset Creation: Fri Aug 05 04:43:56 2016 by Calc SOC 120430  
 Charted by: Depth in Feet scaled 1:240

0	GAMMA RAY (GAPI)	150	ABHV	0	MEL1.5 (Ohm-m)	40
6	CALIPER (in)	16	10 (ft3)	0	MEL 20 (Ohm-m)	40
0	MINMK	20	TBHV			
			0 (ft3)	10		

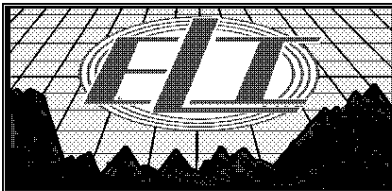








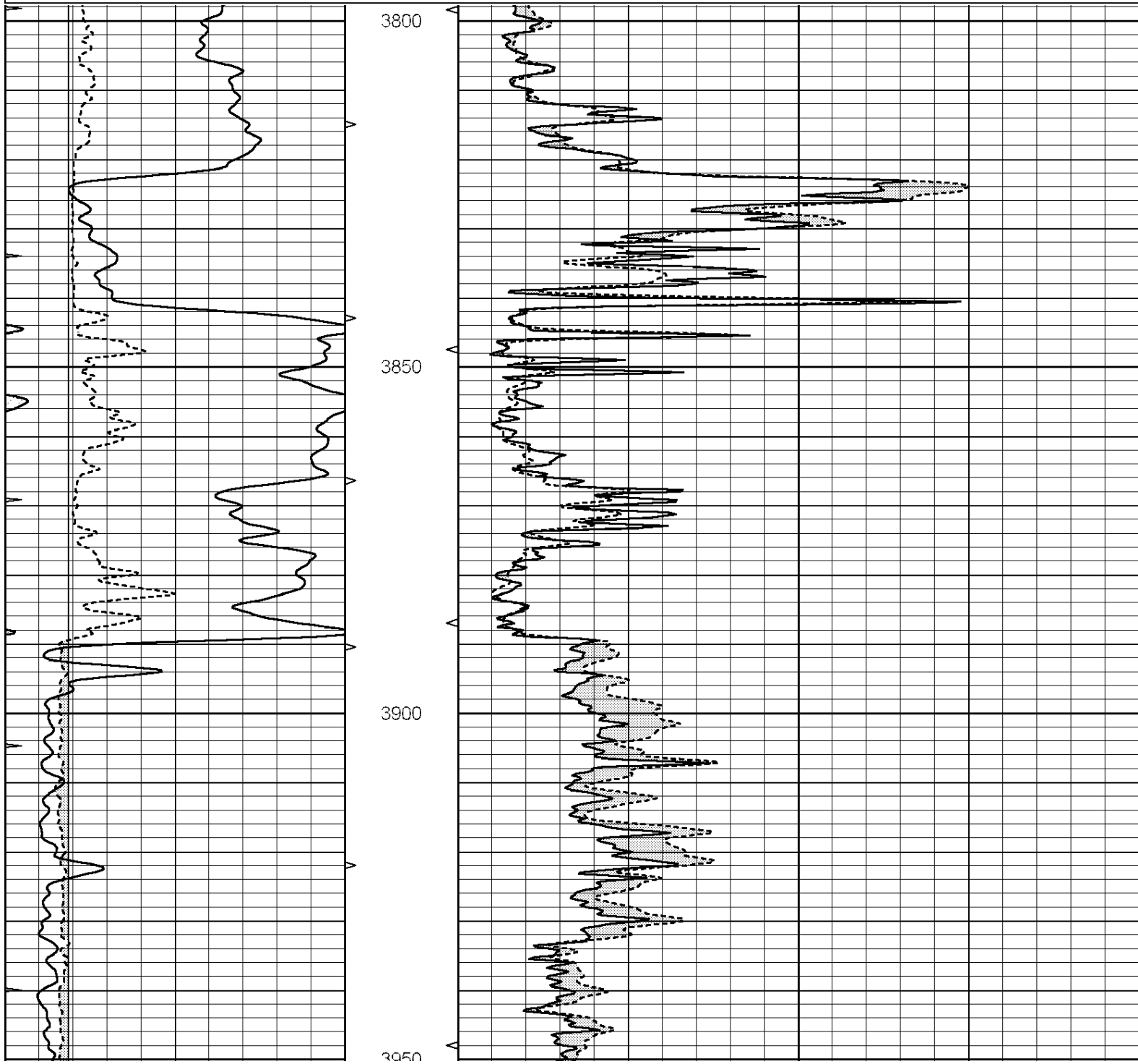
0	GAMMA RAY (GAPI)	150	ABHV	0	MEL1.5 (Ohm-m)	40
6	CALIPER (in)	16	10 (ft3)	0 0	MEL 20 (Ohm-m)	40
0	MINMK	20	TBHV			
			0 (ft3)	10		

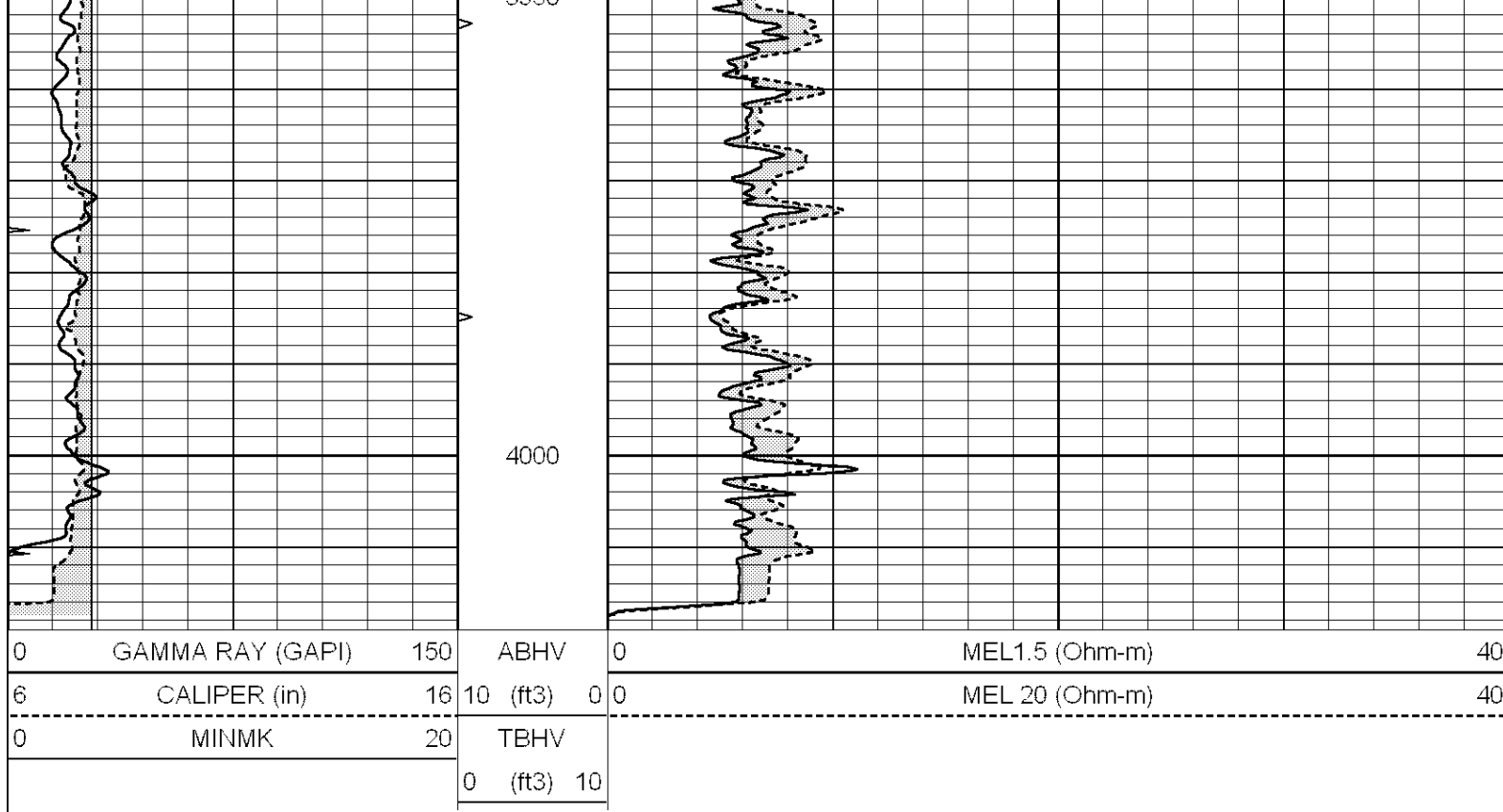


# REPEAT SECTION

Database File: 30755ddn.db  
 Dataset Pathname: pass5.2  
 Presentation Format: micro  
 Dataset Creation: Fri Aug 05 04:21:18 2016 by Calc SOC 120430  
 Charted by: Depth in Feet scaled 1:240

0	GAMMA RAY (GAPI)	150	ABHV	0	MEL1.5 (Ohm-m)	40
6	CALIPER (in)	16	10 (ft3)	0 0	MEL 20 (Ohm-m)	40
0	MINMK	20	TBHV			
			0 (ft3)	10		





### Calibration Report

Database File: 30755ddn.db  
 Dataset Pathname: pass6.1  
 Dataset Creation: Fri Aug 05 04:43:56 2016 by Calc SOC 120430

### MICRO Calibration Report

Serial Number:	070910	
Tool Model:	ProbeN	
Performed:	Tue Mar 01 08:02:30 2016	
Caliper Calibration:	Gain=5.104	Offset=-0.218
References	Low Cal 7.300	High Cal 16.000
Readings	1.473	3.178
1.5" Calibration:	Gain=34.000	Offset=0.300
References	Low Cal 0.000	High Cal 20.000
Readings	0.000	1.216
2" Calibration:	Gain=42.000	Offset=0.000
References	Low Cal 0.000	High Cal 20.000
Readings	0.002	1.053

### Gamma Ray Calibration Report

Serial Number:	070559	
Tool Model:	OPEN_GR	
Performed:	Mon Jul 04 00:08:32 2016	
Calibrator Value:	1.0	GAPI
Background Reading:	0.0	cps
Calibrator Reading:	1.0	cps

Sensitivity:

0.2100

GAPI/cps