

DUAL RECEIVER CEMENT BOND LOG

Company YOUNGER ENERGY COMPANY
Well MOSIER - BAUER UNIT #1
Field HURRAY NORTH
County PAWNEE
State KANSAS **Country** USA

Location: API # : 15-145-21820-0000 **Other Services**

SEC 27 TWP 21S RGE 15W
 2250' FSL & 2550' FWL
 SE - NE - NE - SW
Permanent Datum GROUND LEVEL **Elevation** 2728
Log Measured From KELLING BUSHING 13' A.G.L.
Drilling Measured From KELLY BUSHING **Elevation** K.B. 2735
 D.F. 2733
 G.L. 2728

Company YOUNGER ENERGY COMPANY
Well MOSIER - BAUER UNIT #1
Field HURRAY NORTH
County PAWNEE
State KANSAS **Country** USA

Date 8-15-16
Run Number ONE
Depth Driller 4010
Depth Logger 3969
Bottom Logged Interval 3967
Top Log Interval 2450
Open Hole Size 7 7/8
Type Fluid WATER
Density / Viscosity
Max. Recorded Temp. 2550
Estimated Cement Top
Time Well Ready
Time Logger on Bottom 3362
Equipment Number 3362
Location HAYS, KS
Recorded By JEREMY SEIB
Witnessed By P-MAST

Borehole Record		Tubing Record				
Run Number	Bit From	To	Size	Weight	From	To
ONE	12 1/4	0	955			
TWO	7 7/8	955	4010			

Casing Record		Surface String		Prot. String		Production String	
Size	Wgt/Ft	Top	Bottom	Size	Wgt/Ft	Top	Bottom
8 5/8		0	955				
5 1/2		0					

<<< Fold Here >>>

All interpretations are opinions based on inferences from electrical or other measurements and we cannot and do not guarantee the accuracy or correctness of any interpretation, and we shall not, except in the case of gross or willful negligence on our part, be liable or responsible for any loss, costs, damages, or expenses incurred or sustained by anyone resulting from any interpretation made by any of our officers, agents or employees. These interpretations are also subject to our general terms and conditions set out in our current Price Schedule.

Comments

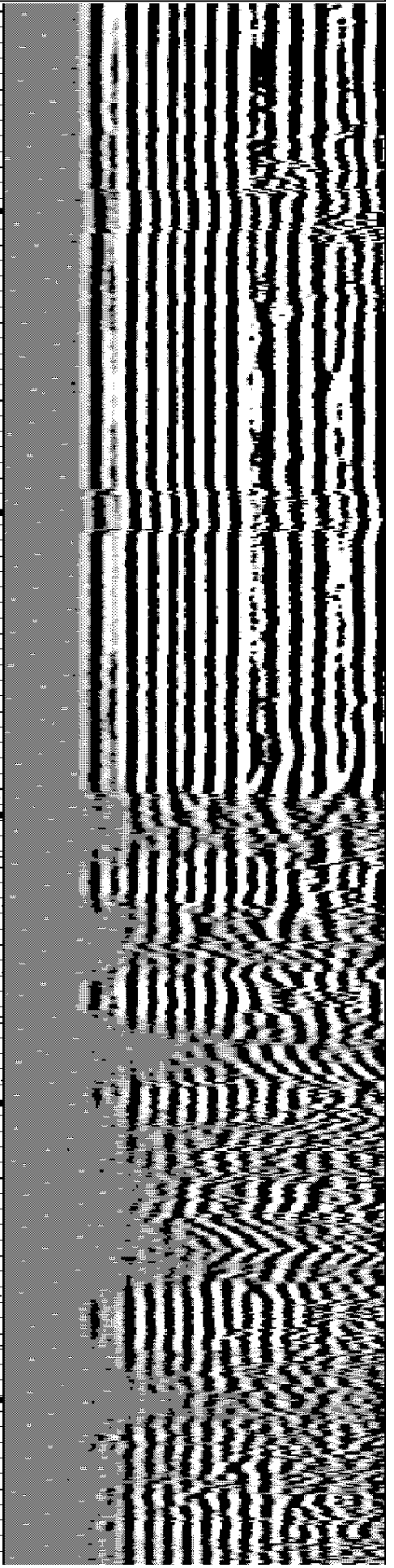
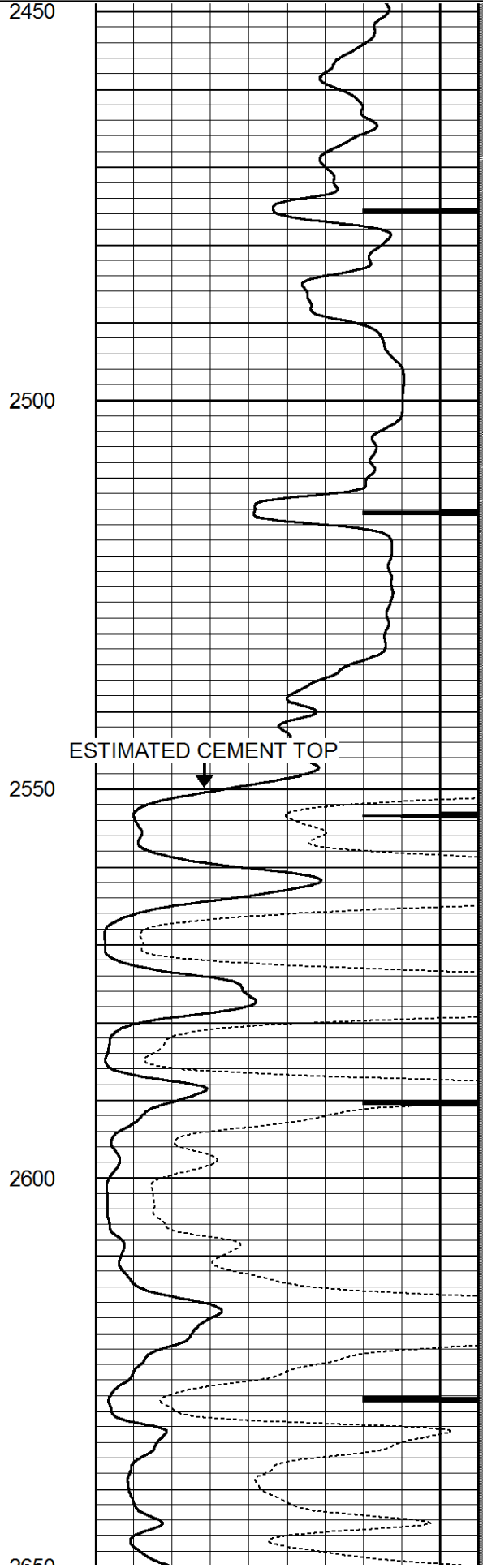
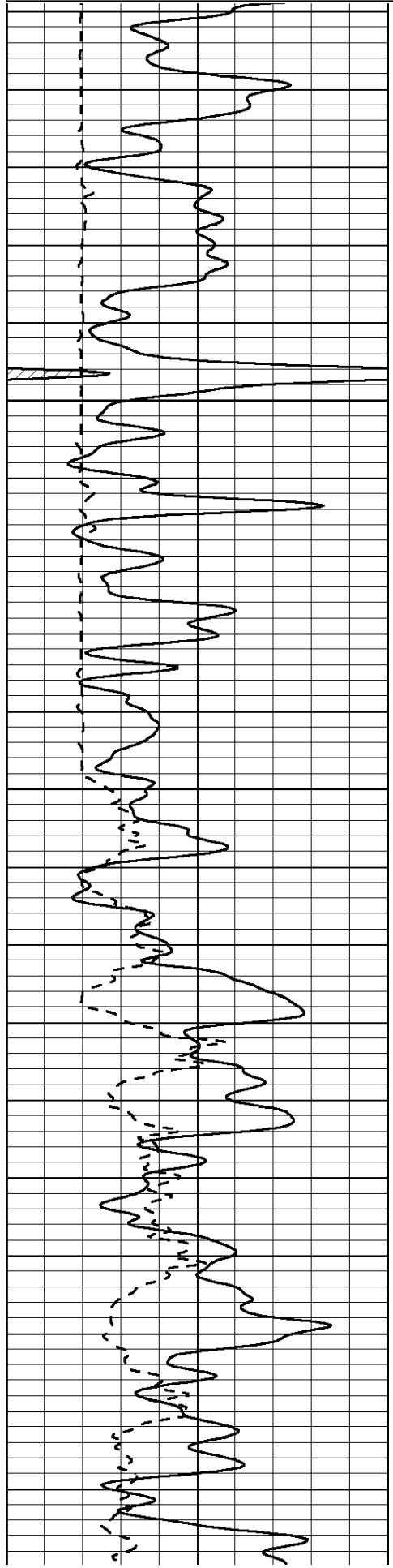
THANK YOU FOR USING ELI WIRELINE SERVICES, LLC., HAYS, KS (785) 628-6395
 DIRECTIONS: LARNED, KS - 1 MILE SOUTH TO HWY 19 - 7 MILES EAST TO 40TH RD. - 2 MILES NORTH TO "N" RD. - 1/2 MILE EAST - NORTH INTO

Database File: 31172.db
 Dataset Pathname: pass2.3
 Presentation Format: dcbl02
 Dataset Creation: Mon Aug 15 16:10:22 2016
 Charted by: Depth in Feet scaled 1:240

0	Gamma Ray (GAPI)	150
200	5' Travel Time (usec)	1000

0	3' Amplitude (mV)	100
9	CCL	-1
0	Amplified Amplitude (mV)	20

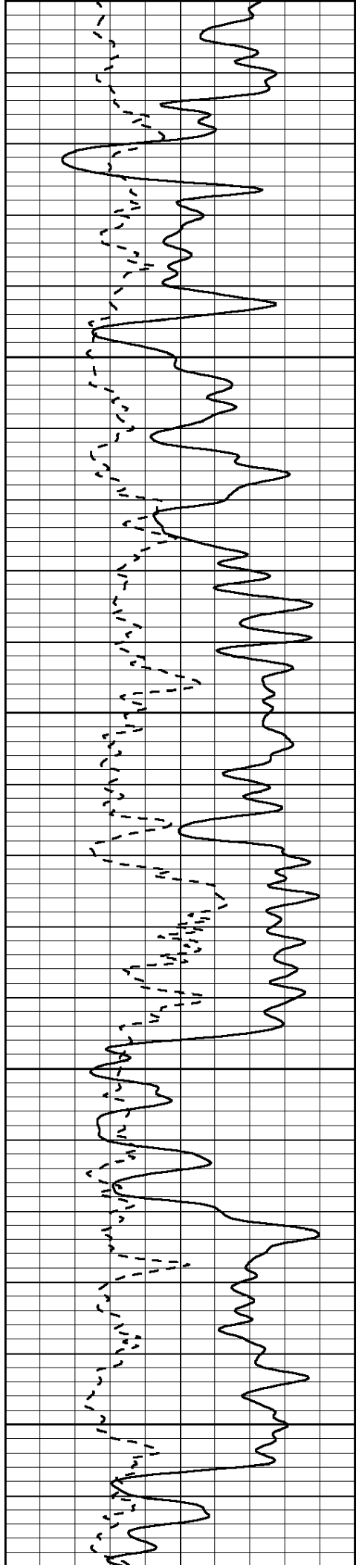
200	5FT VDL	1000
-----	---------	------



2450
2500
2550
2600
2650

ESTIMATED CEMENT TOP





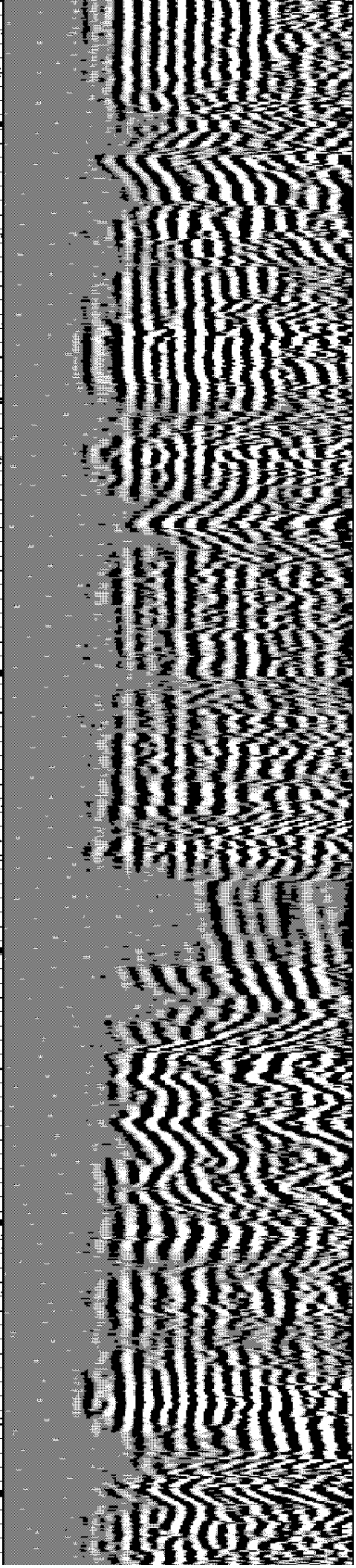
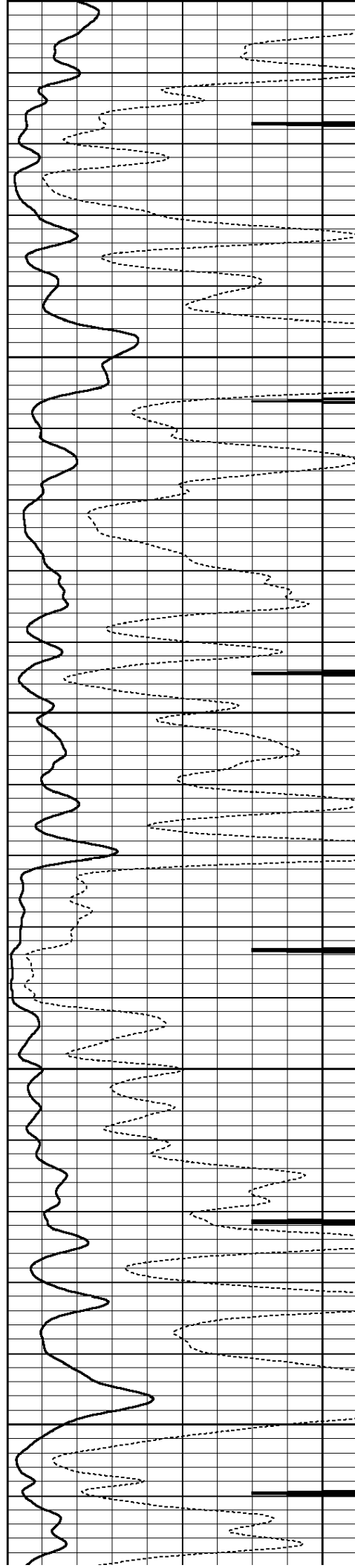
2650

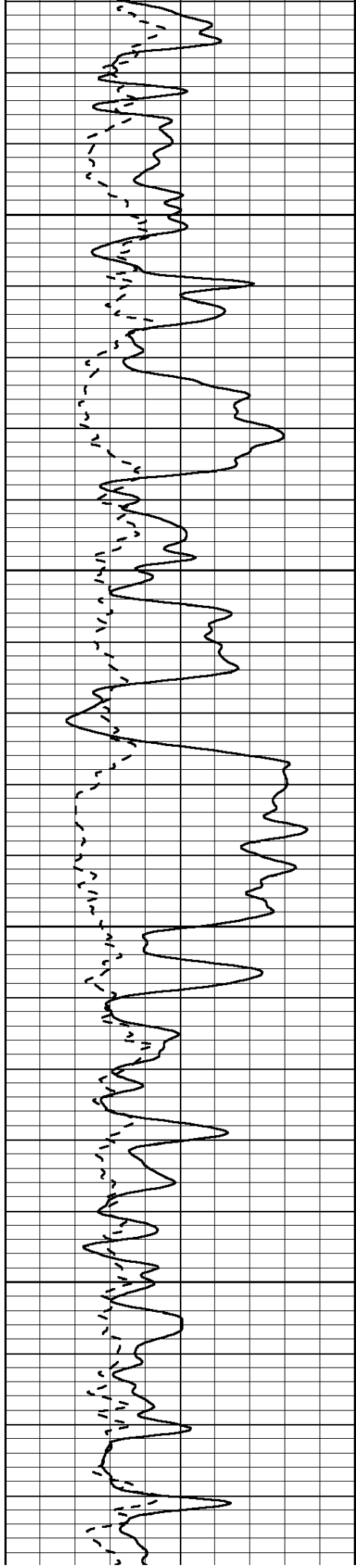
2700

2750

2800

2850



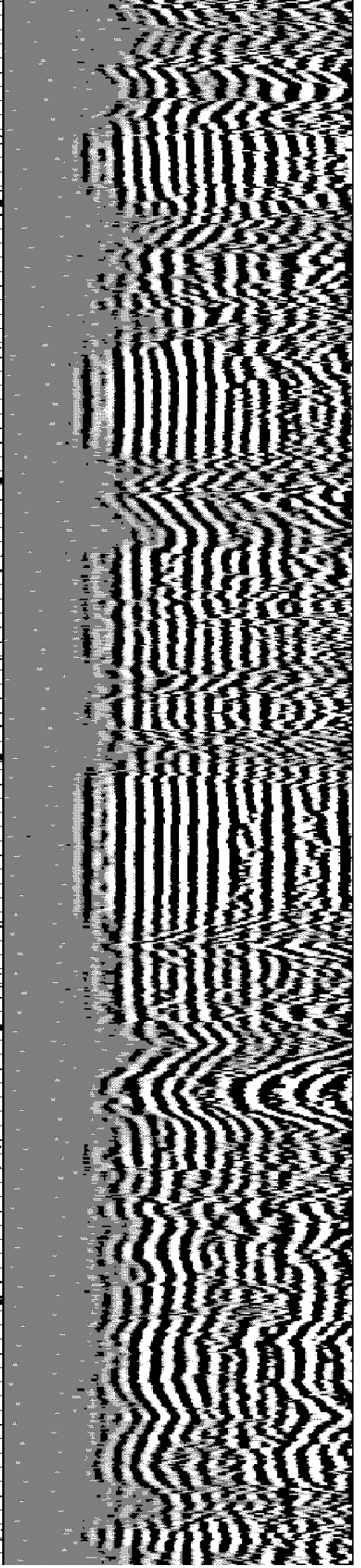
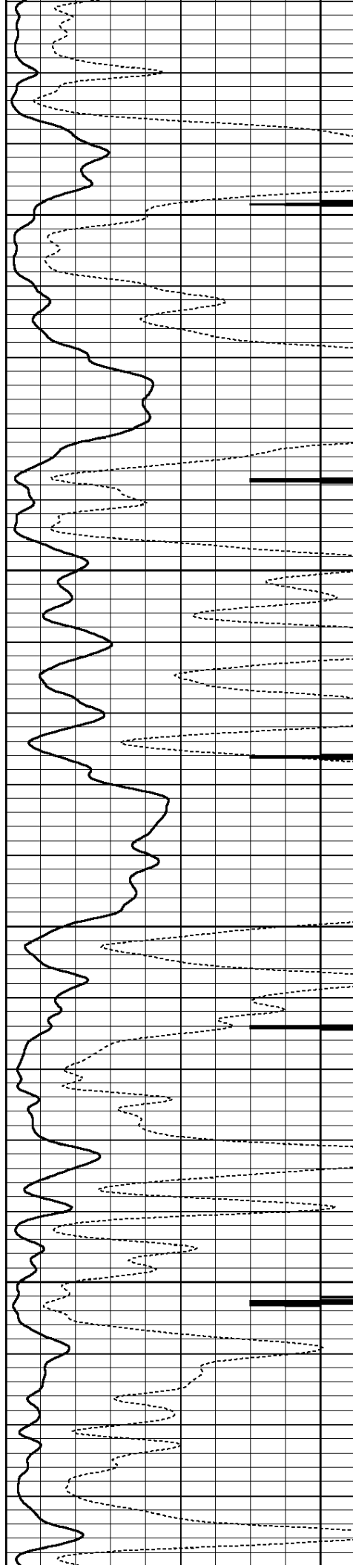


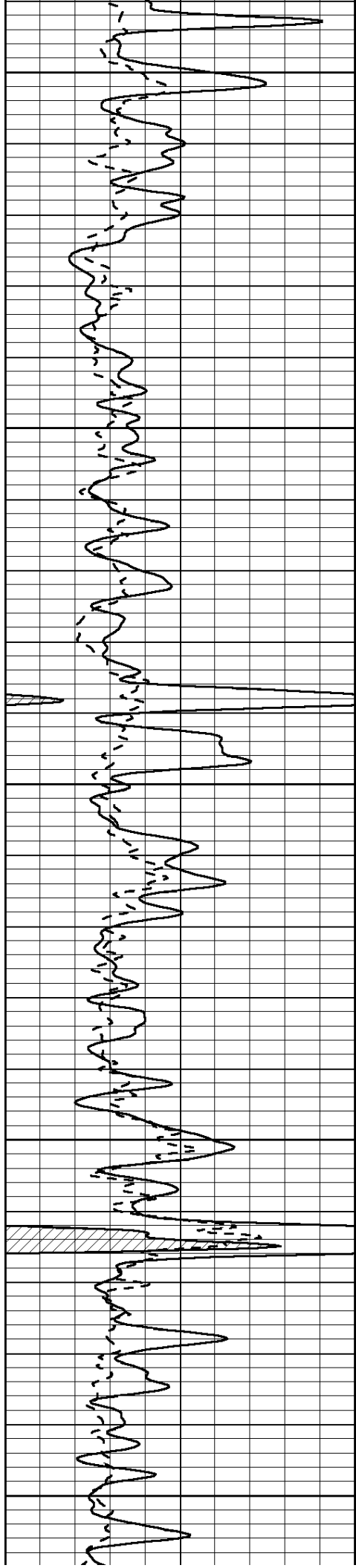
2900

2950

3000

3050





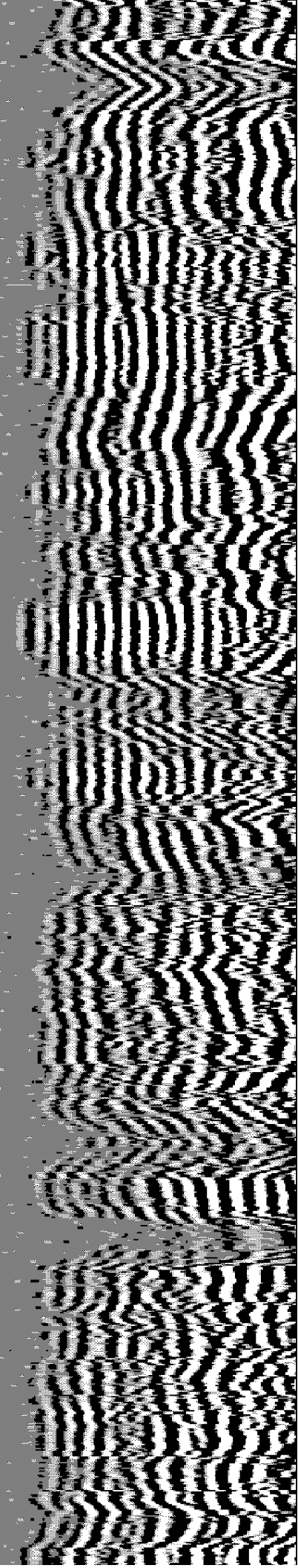
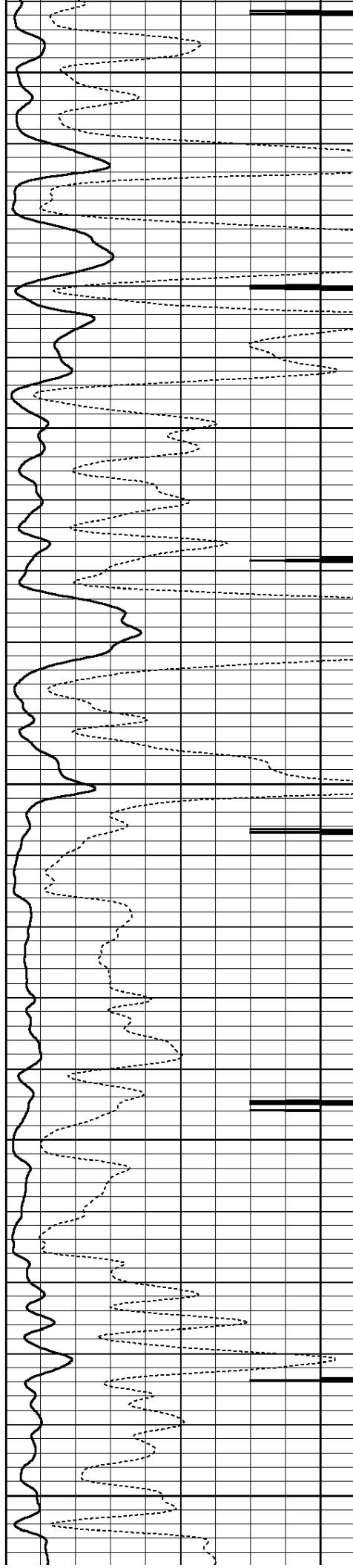
3100

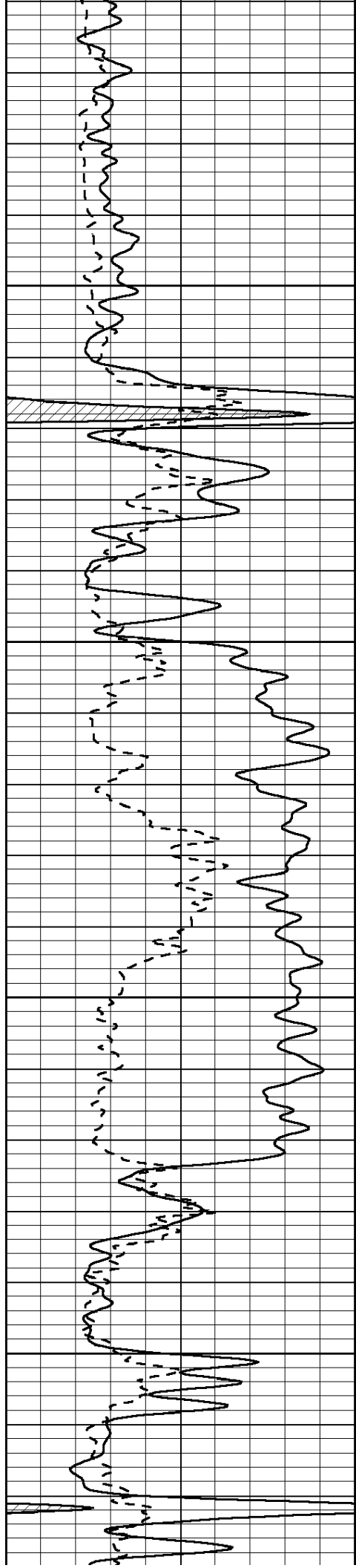
3150

3200

3250

3300



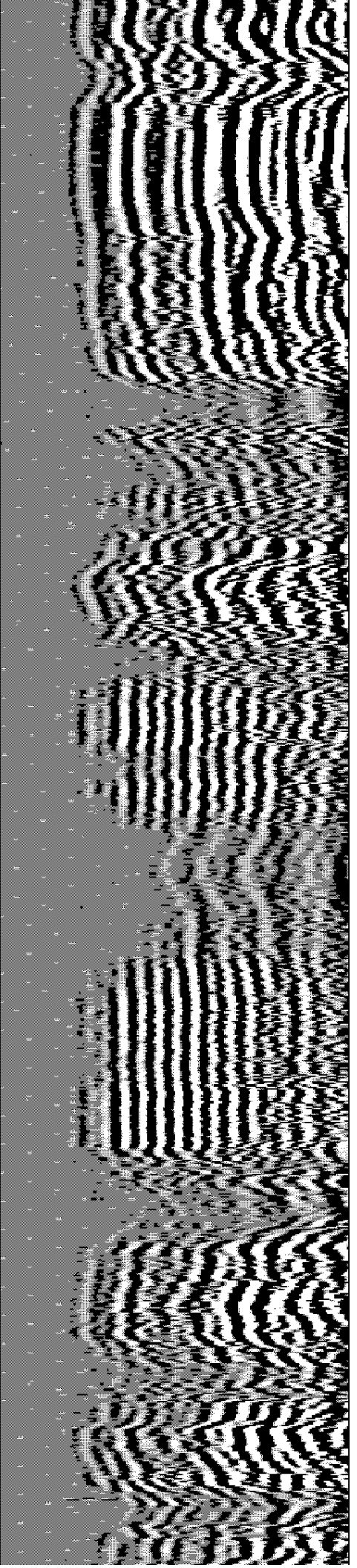
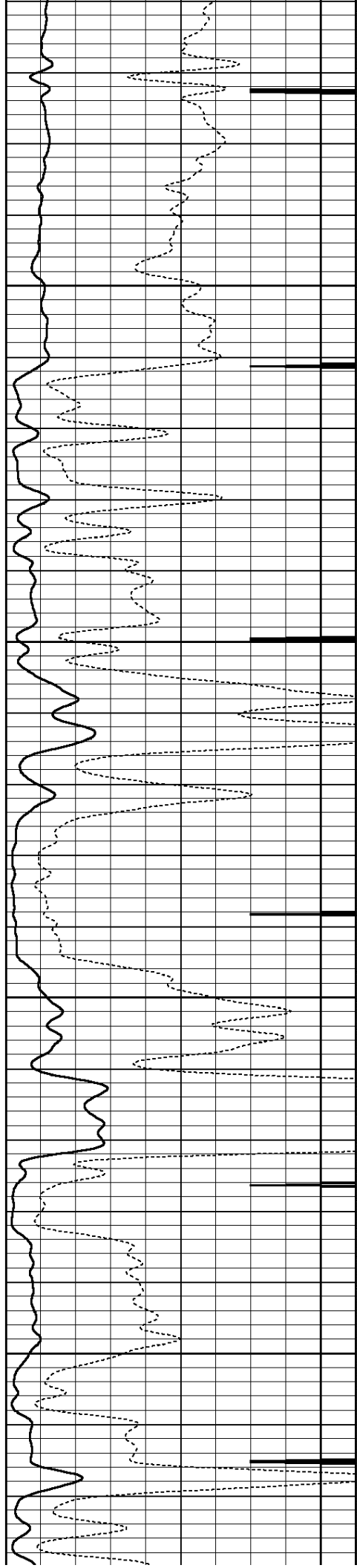


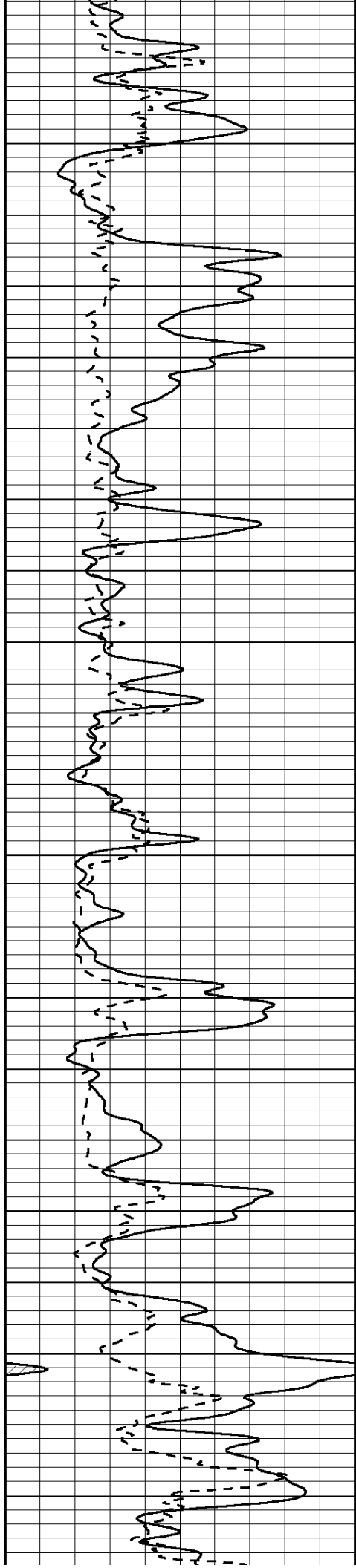
3350

3400

3450

3500





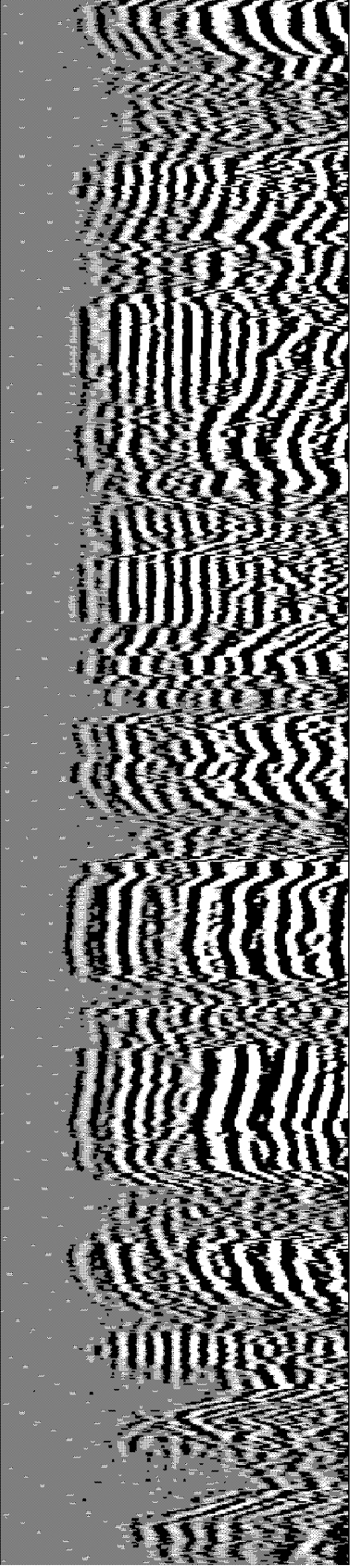
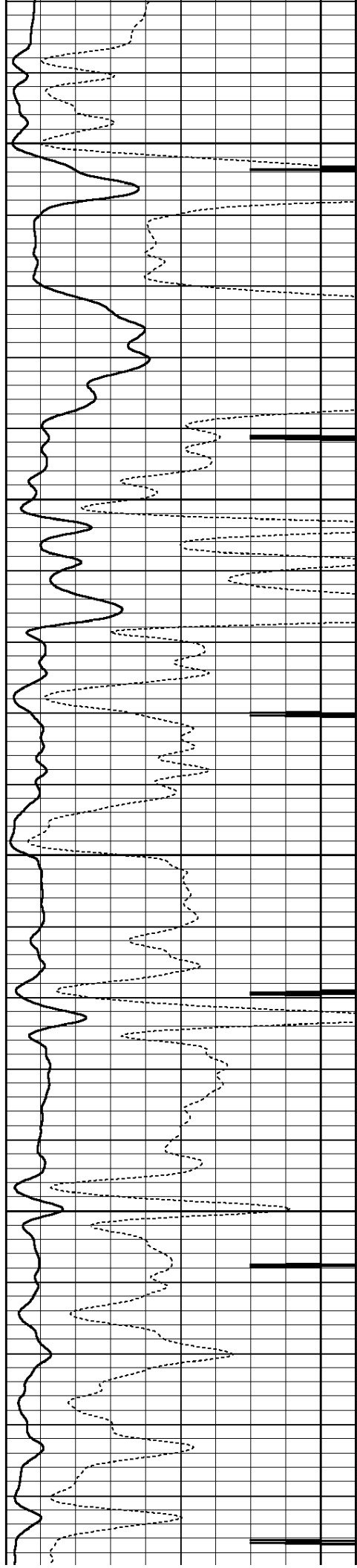
3550

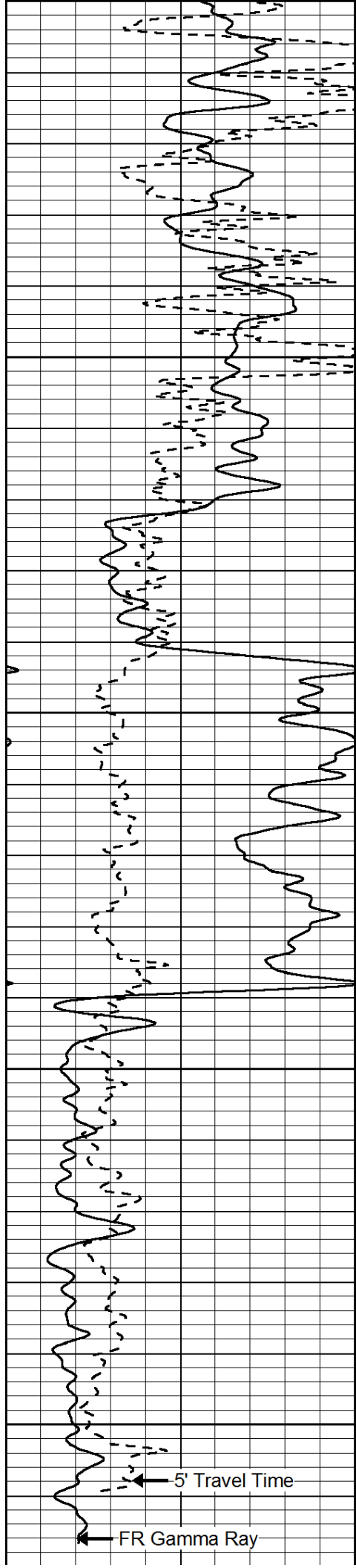
3600

3650

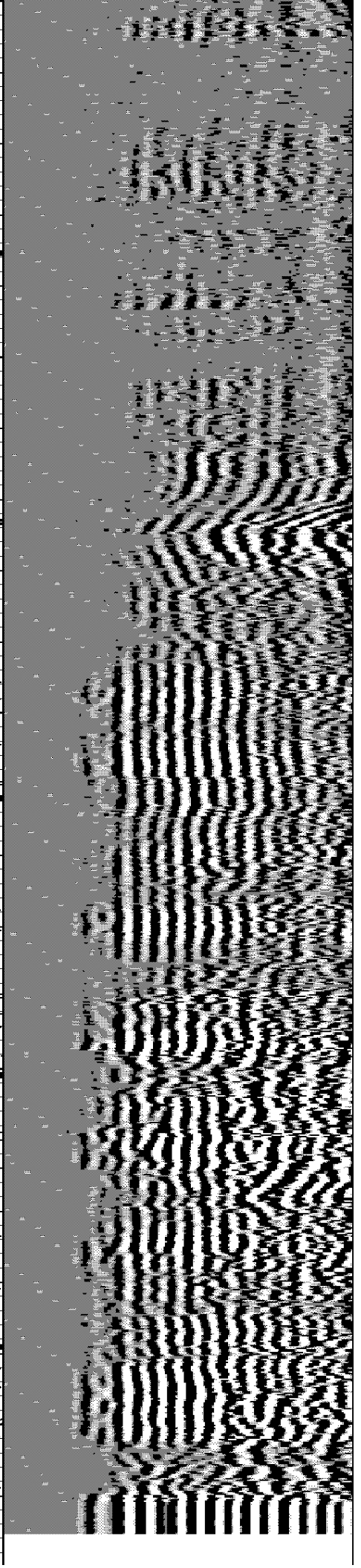
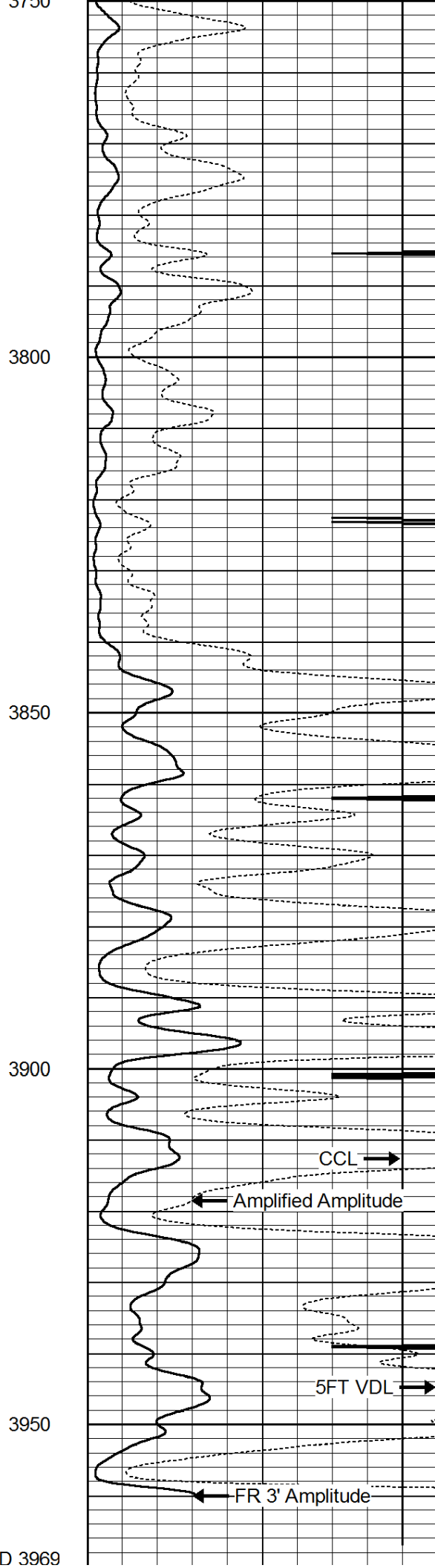
3700

3750





TD 3969



0	Gamma Ray (GAPI)							150	
200	5' Travel Time (usec)							1000	

0	3' Amplitude (mV)							100	
9	CCL							-1	
0	Amplified Amplitude (mV)							20	

200	5FT VDL					1000
-----	---------	--	--	--	--	------