



MIDWEST SURVEYS
 LOGGING - PERFORATING - CONSULTING SERVICES
 P.O. Box 68, Osawatomie, KS 66064
 913 / 755 - 2128

GAMMA RAY / NEUTRON / CCL

File No. _____

Company **Altavista Energy, Inc.**

Well **Strahm West No. AI-2**

Field **Vernon**

County **Woodson** State **Kansas**

Location **4990' FSL & 4000' FEL**

Other Services **Perforate**

Sec. 11 Twp. 24S Rge. 16E Elevation 1053'

Permanent Datum GL Elevation 1053'

Log Measured From GL Elevation 1053'

Drilling Measured From GL Elevation 1053'

Date 09-14-2018

Run Number One

Depth Driller 1121.0

Bottom Logger 1080.0

Bottom Logged Interval 1079.0

Top Log Interval 20.0

Fluid Level Full

Type Fluid Water

Density / Viscosity NA

Salinity - PPM Cl NA

Max Recorded Temp NA

Estimated Cement Top 0.0

Equipment No. Location 104 Osawatomie

Recorded by Gary Winkisch

Witnessed by Doug Evans

BOREHOLE RECORD		CASING RECORD		TO	
No.	BIT FROM	TO	SIZE	WGT.	FROM
One	12.25"	40.0	7.00"	24.0	0.0
Two	5.875"	40.0	2.875"	6.5	0.0
				Set	At
					1081.80

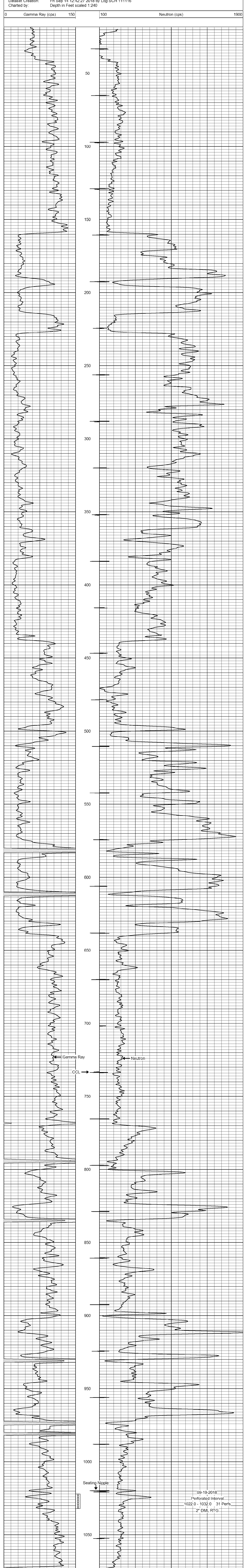
<<< Fold Here >>>

All interpretations are opinions based on inferences from electrical or other measurements and we cannot and do not guarantee the accuracy or correctness of any interpretation, and we shall not, except in the case of gross or willful negligence on our part, be liable or responsible for any loss, costs, damages, or expenses incurred or sustained by anyone resulting from any interpretation made by any of our officers, agents or employees. These interpretations are also subject to our general terms and conditions set out in our current Price Schedule.

Comments

Drilling Contractor :
Finney Drilling, Company

Database File: strahm west 2ai.db
 Dataset Pathname: pass1
 Presentation Format: gr-n-ccl
 Dataset Creation: Fri Sep 14 12:42:27 2018 by Log SCH 111116
 Charted by: Depth in Feet scaled 1:240



09-19-2018
 Perforated Interval
 1022.0 - 1032.0 31 Perfs
 2" DML RTG