

**MIDWEST SURVEYS**  
 LOGGING - PERFORATING - CONSULTING SERVICES  
 P.O. Box 68, Osawatomie, KS 66064  
 913 / 752 - 2128

**GAMMA RAY / NEUTRON / CCL**

File No. \_\_\_\_\_

Company **Atavista Energy, Inc.**

Well **Strahm West No. AI-30**

Field **Vernon**

County **Woodson**

State **Kansas**

Location **4805 FSL & 3500' FEL**

Other Services **SE NW-NE NW**

Sec. 11  
 Permament Datum Twp. 24S Rge. 16E  
 Log Measured From G.L. Elevation 1058'  
 Drilling Measured From G.L. Elevation 1058'  
 K.B. NA  
 D.F. NA  
 G.L. 1058'

Date \_\_\_\_\_  
 Run Number \_\_\_\_\_  
 Depth Driller \_\_\_\_\_  
 Depth Logger \_\_\_\_\_  
 Bottom Logged Interval \_\_\_\_\_  
 Top Log Interval \_\_\_\_\_  
 Fluid Level \_\_\_\_\_

Type Fluid		Density / Viscosity	Water
Density - PPH CI		NA	NA
Max Recorded Temp		NA	NA
Estimated Cement Top		0.0	
Equipment No.		104	Osawatimie
Recorded by		Gary Winkelsch	
Missed by		Doug Evans	
BONE HOLE RECORD		CASING RECORD	
Run No.	BIT FROM TO	SIZE	WGT.
One	9.875' 4.00 1140.0	7.00"	24.0
Two	5.875' 4.00 1140.0	2.875"	6.5
		FROM	TO
		0.0	40.0
		0.0	1112.0
		Set	At
			1083.0

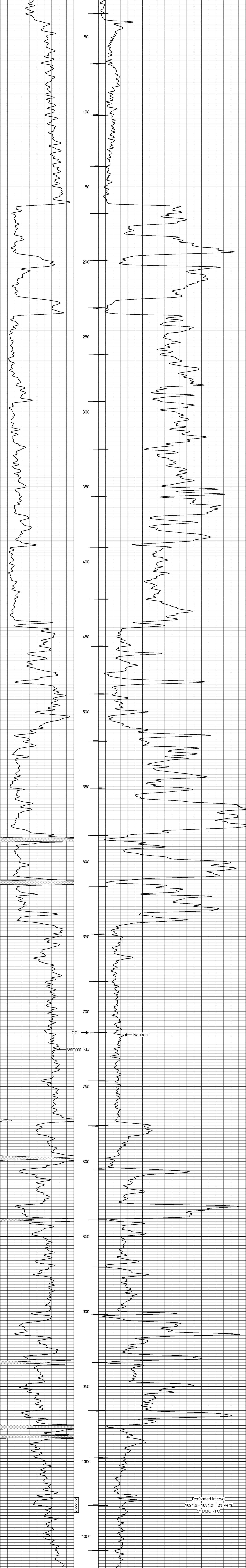
<<< Fold Here >>>

All interpretations are opinions based on inferences from electrical or other measurements and we cannot and do not guarantee the accuracy or correctness of any interpretation, and we shall not, except in the case of gross or willful negligence on our part, be liable or responsible for any loss, costs, damages, or expenses incurred or sustained by anyone resulting from any interpretation made by any of our officers, agents or employees. These interpretations are also subject to our general terms and conditions set out in our current Price Schedule.

Comments

Drilling Contractor :  
 Town Oilfield Services, Inc.

Database File: strahm west 30ai.db  
 Dataset Pathname: pass1  
 Presentation Format: gr-n-ccl  
 Dataset Creation: Fri Sep 21 09:15:35 2018 by Log SCH 111116  
 Charted by: Depth in Feet scaled 1:240



Gamma Ray (cps) 0 150 Neutron (cps) 100 1900