



**SONIC
LOG**

Company SIROKY OIL MANAGEMENT
 Well GREEN GROUP #1-24
 Field WILDCAT
 County PRATT
 State KANSAS

Company SIROKY OIL MANAGEMENT
 Well GREEN GROUP #1-24
 Field WILDCAT
 County PRATT State KANSAS

Location: SEC 24 TWP 27S RGE 12W
 926' FSL & 569' FWL
 SE - NW - SW - SW
 API # : 15-151-22471-0000
 GROUND LEVEL Elevation 1797
 KELLY BUSHING 12' A.G.L.
 KELLY BUSHING
 Other Services
 CDL/CNL/PE
 DIL/MEL
 Elevation
 K.B. 1809
 D.F. 1807
 G.L. 1797

| | | |
|------------------------------|----------------|----------------------|
| Date | 6/12/18 | |
| Run Number | TWO | |
| Depth Driller | 4525 | |
| Depth Logger | 4526 | |
| Bottom Logged Interval | 4518 | |
| Top Log Interval | 300 | |
| Casing Driller | 10 3/4" @ 322' | |
| Casing Logger | 322 | |
| Bit Size | 7 7/8" | |
| Type Fluid in Hole | CHEMICAL MUD | CHLORIDES 12,000 PPM |
| Density / Viscosity | 9.1/53 | |
| pH / Fluid Loss | 10.5/12.4 | |
| Source of Sample | FLOWLINE | |
| Rim @ Meas. Temp | .400 @ 90F | |
| Rmf @ Meas. Temp | .300 @ 90F | |
| Rmc @ Meas. Temp | .480 @ 90F | |
| Source of Rmf / Rmc | MEASUREMENT | |
| Rim @ BHT | .298 @ 121F | |
| Time Circulation Stopped | 4.5 HOURS | |
| Time Logger on Bottom | 3:45 A.M. | |
| Maximum Recorded Temperature | 121F | |
| Equipment Number | 922339 | |
| Location | HAYS, KANSAS | |
| Recorded By | JEFF LUEBBERS | |
| Witnessed By | RYAN DAVIS | |

<<< Fold Here >>>

All interpretations are opinions based on inferences from electrical or other measurements and we cannot and do not guarantee the accuracy or correctness of any interpretation, and we shall not, except in the case of gross or willful negligence on our part, be liable or responsible for any loss, costs, damages, or expenses incurred or sustained by anyone resulting from any interpretation made by any of our officers, agents or employees. These interpretations are also subject to our general terms and conditions set out in our current Price Schedule.

Comments

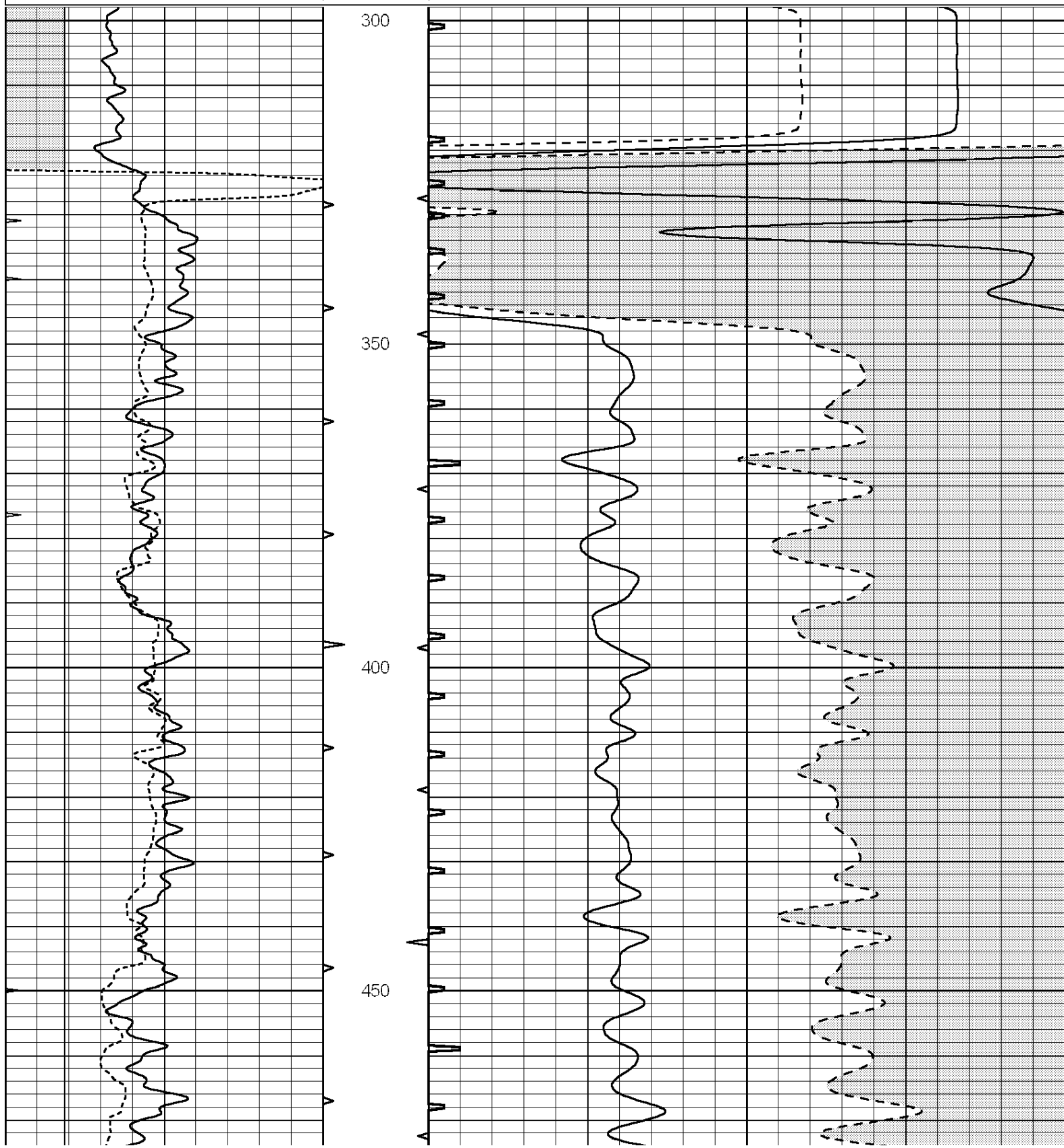
THANK YOU FOR USING ELI WIRELINE HAYS, KANSAS (785) 628-6395
 DIRECTIONS
 PRATT, KS., 5E. ON HWY 54 YO "60TH AVE.", N. ACROSS HWY TO ACCESS RD., 1E. TO "70TH AVE.",
 3N., E. INTO AT GATE 1 1/4 MILE

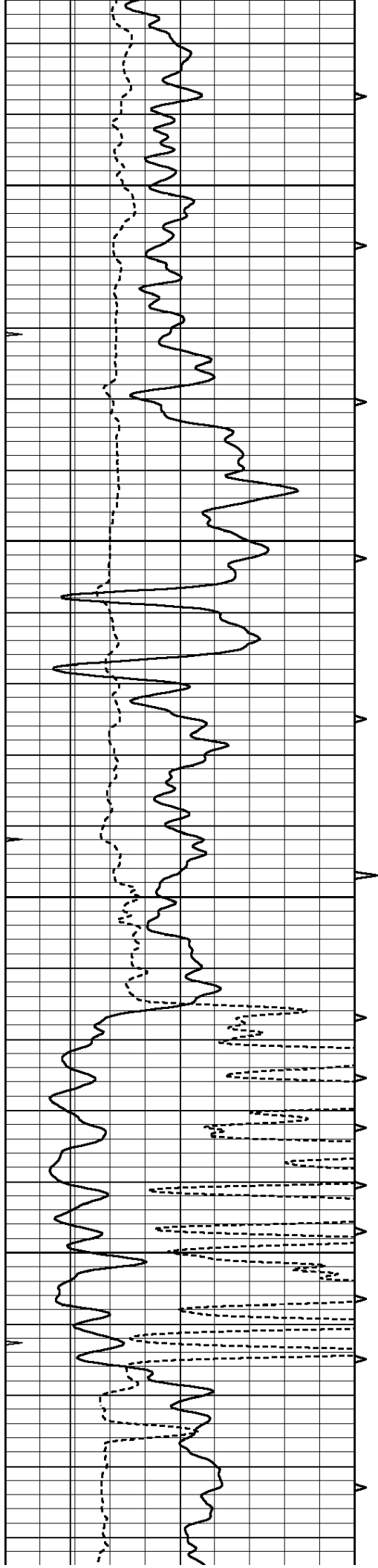


MAIN SECTION

Database File: 2651pe.db
 Dataset Pathname: pass6.4
 Presentation Format: slt
 Dataset Creation: Tue Jun 12 05:27:11 2018 by Calc SOC 120430
 Charted by: Depth in Feet scaled 1:240

| | | | | | | |
|---|------------------|-----|----------|-----|----------------------|---------------------|
| 0 | GAMMA RAY (GAPI) | 150 | ABHV | 140 | DELTA TIME (usec/ft) | 40 |
| 6 | CALIPER (in) | 16 | 10 (ft3) | 0 | 30 | SONIC POROSITY (pu) |
| 0 | MINMK | 20 | TBHV | 0 | ITT (msec) | 20 |
| | | | 0 (ft3) | 10 | | |



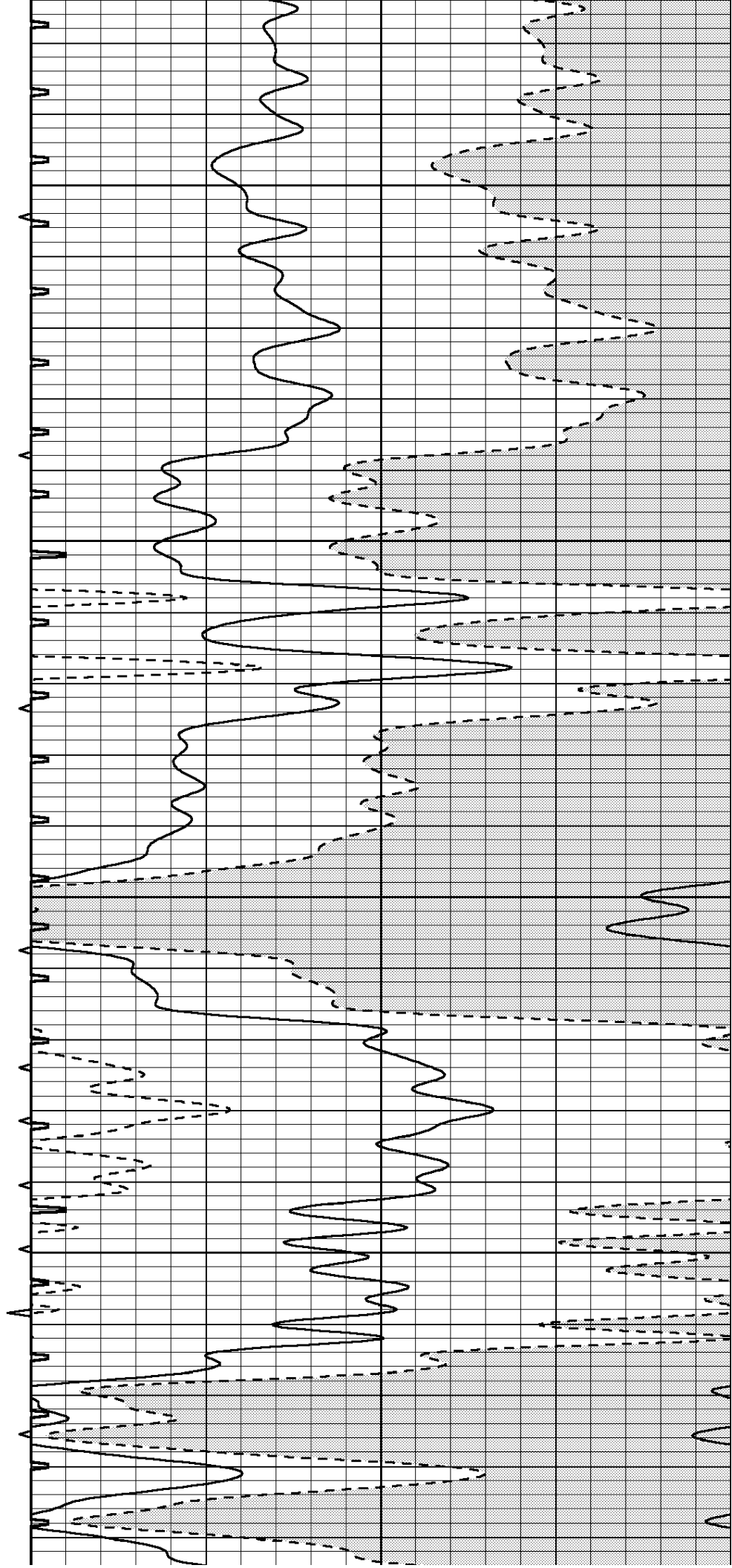


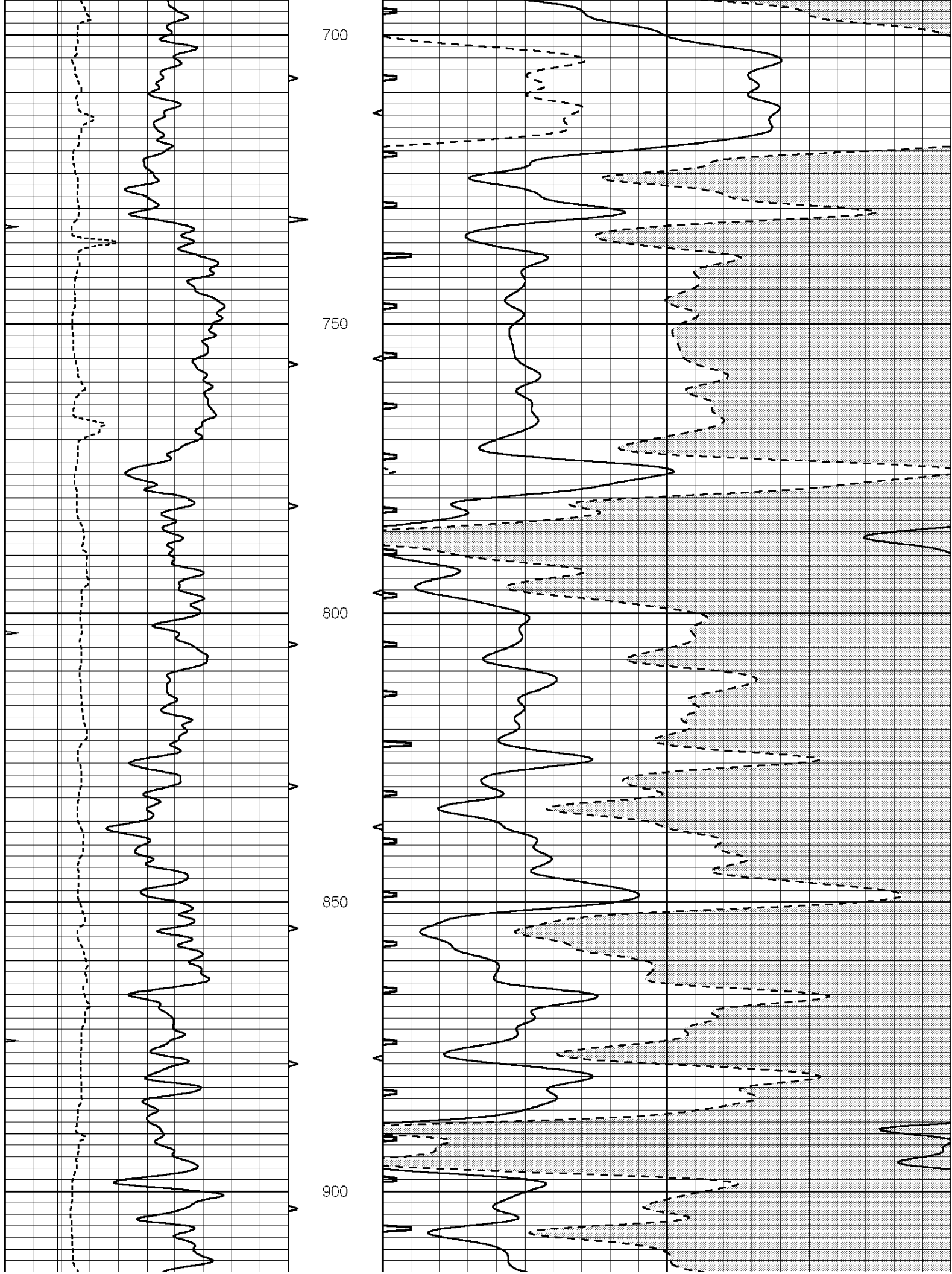
500

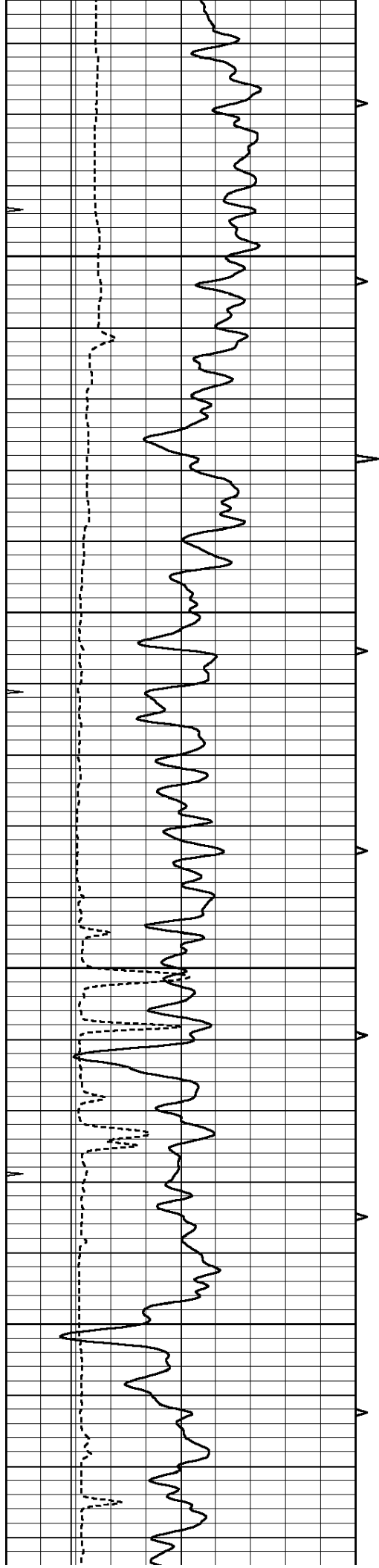
550

600

650





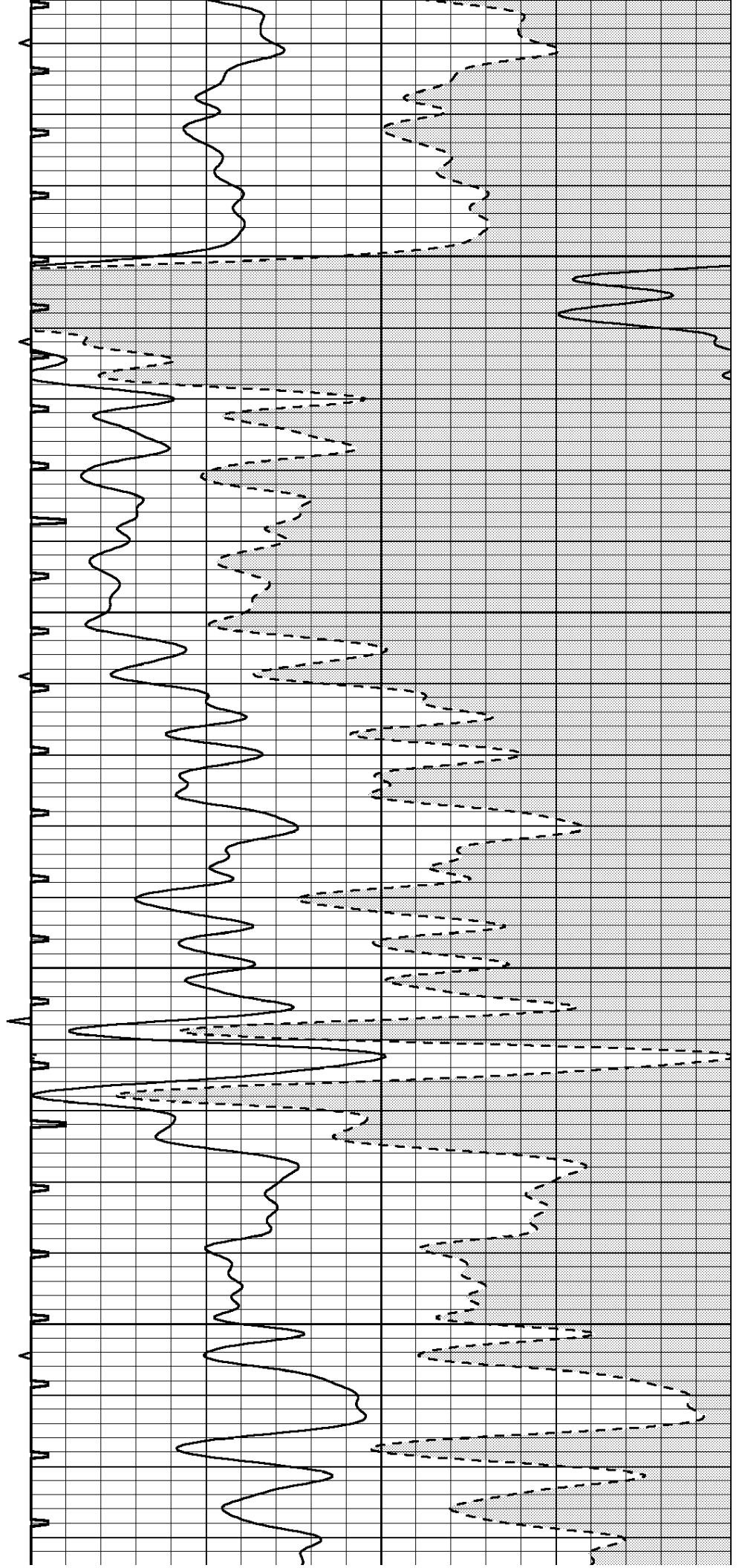


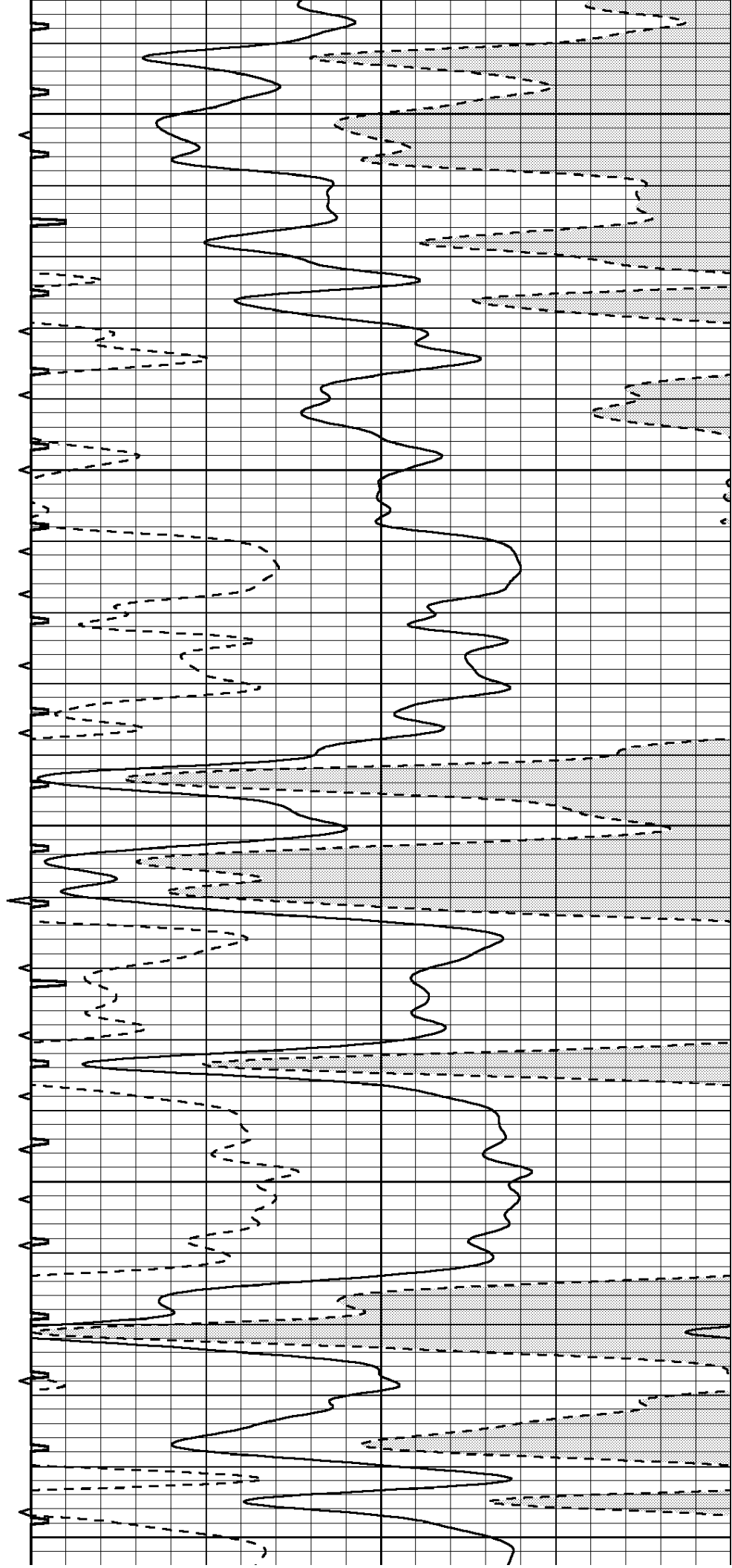
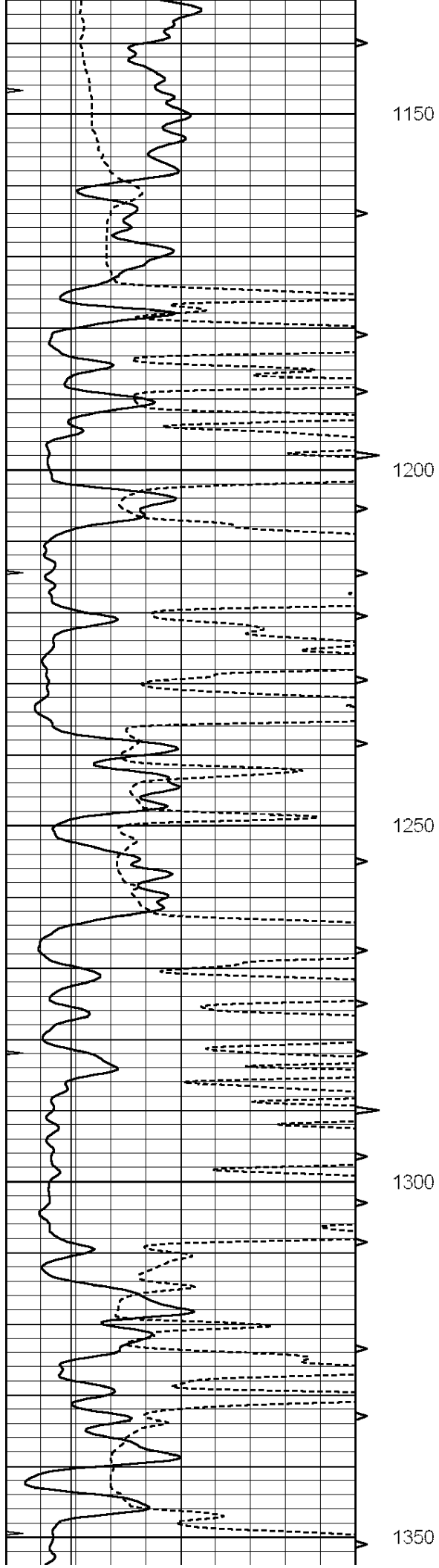
950

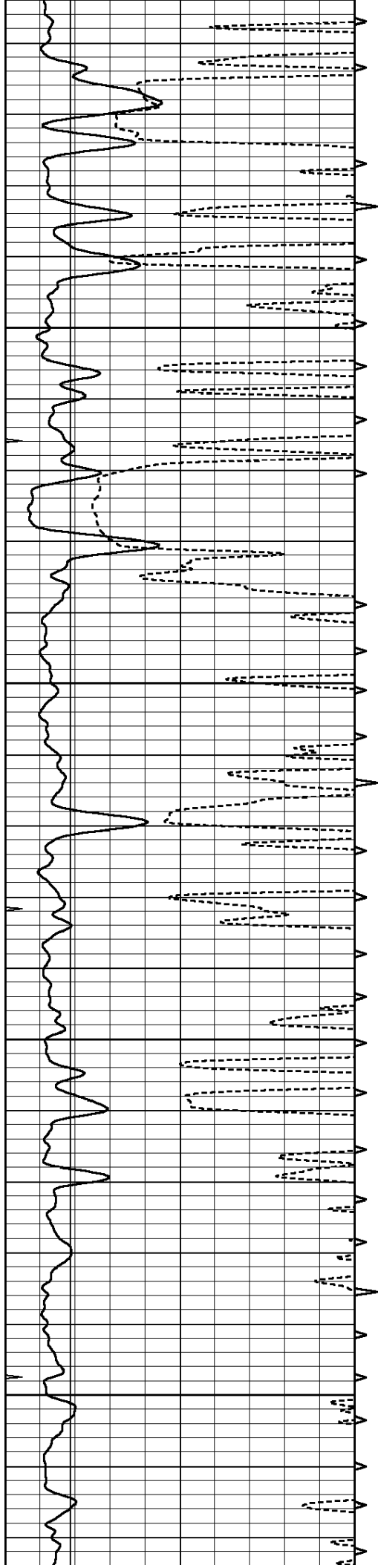
1000

1050

1100





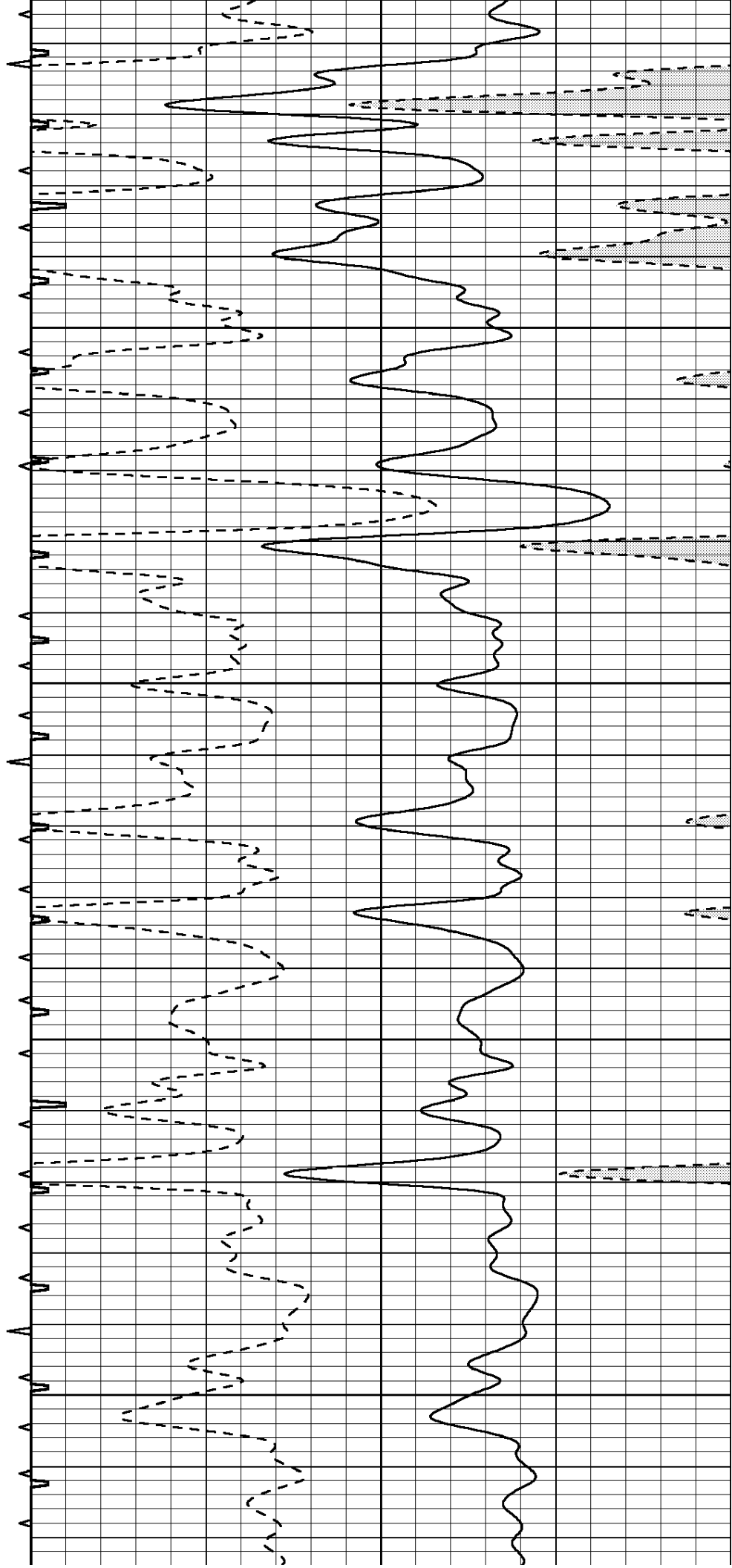


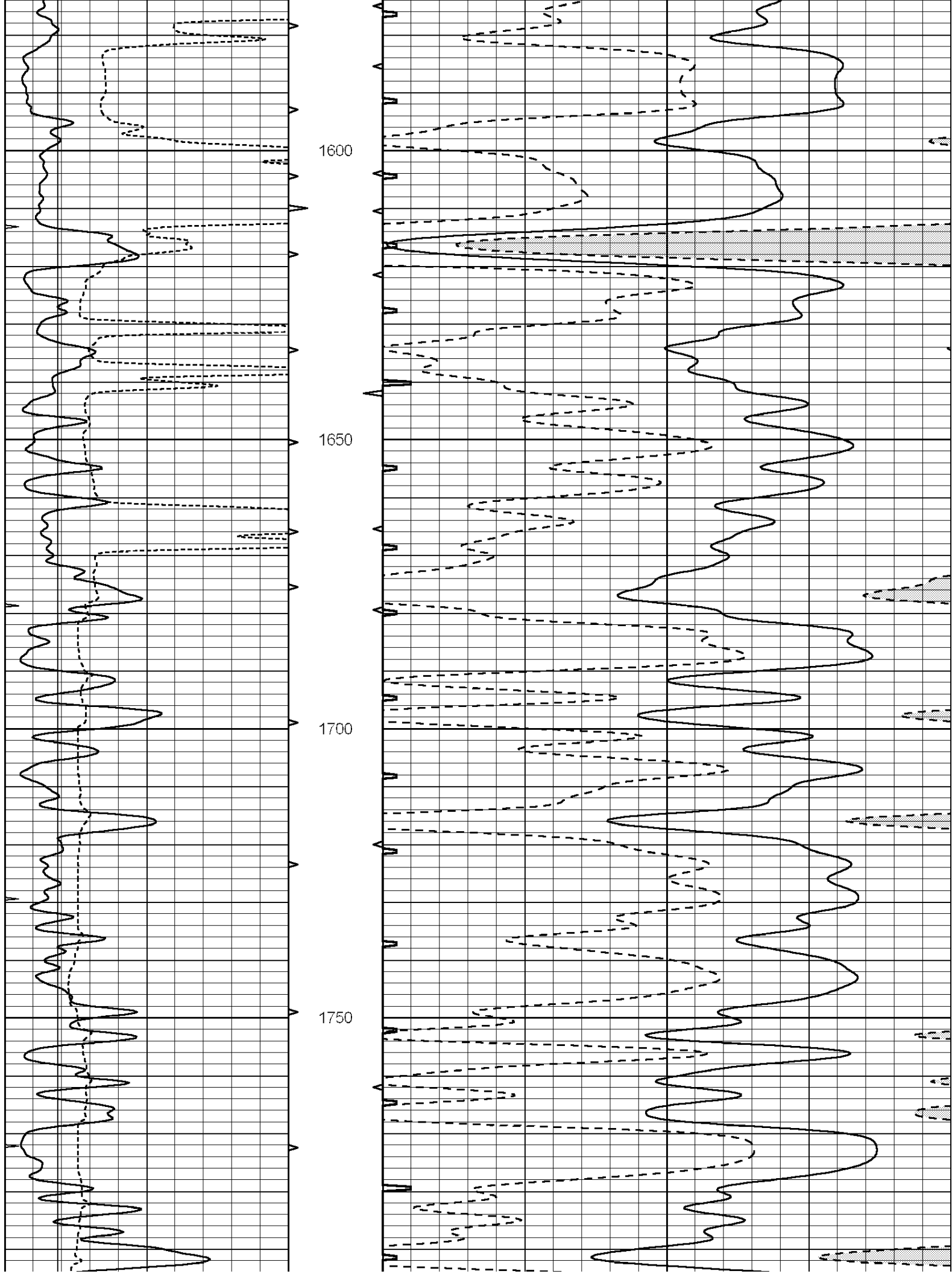
1400

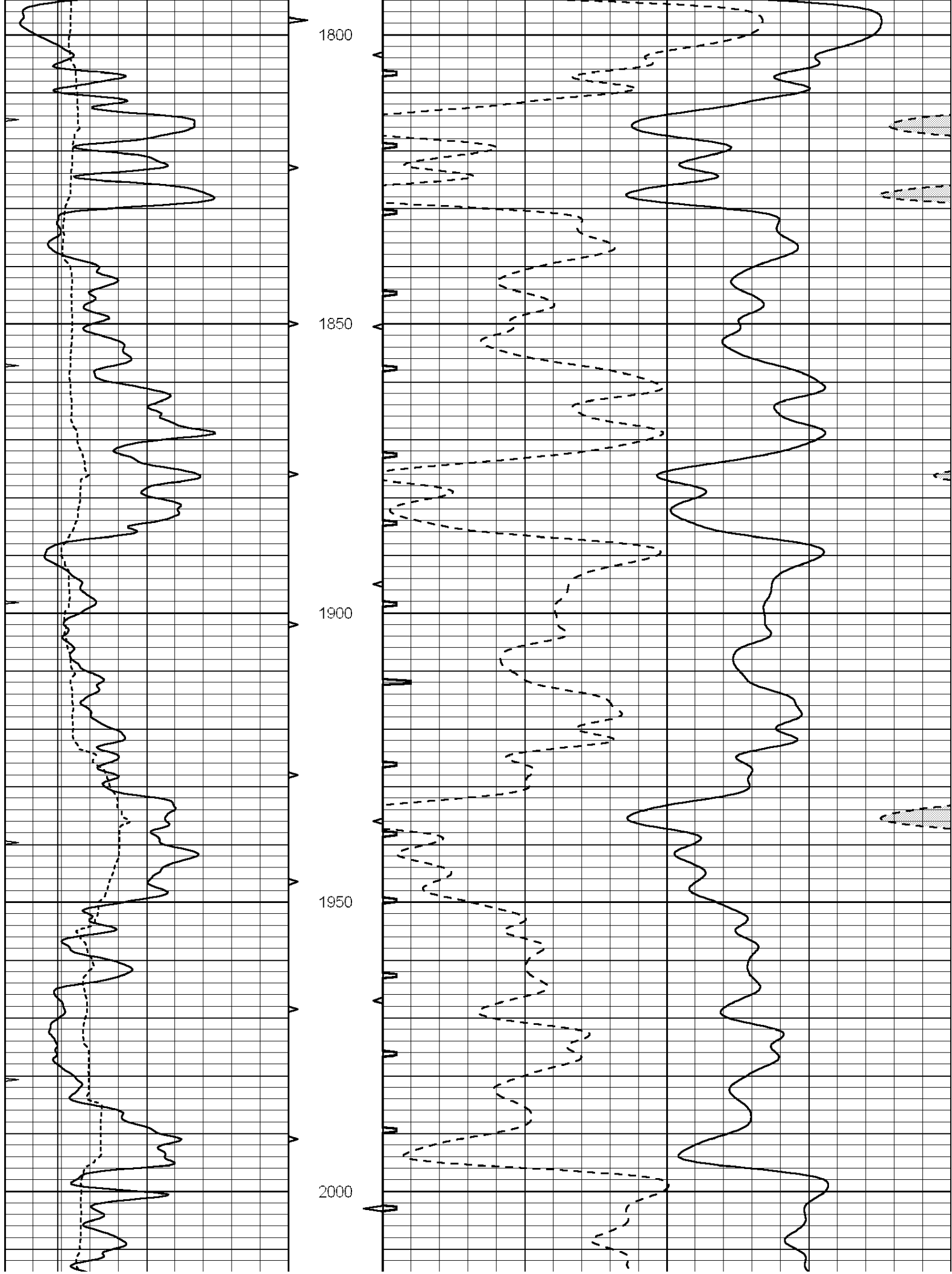
1450

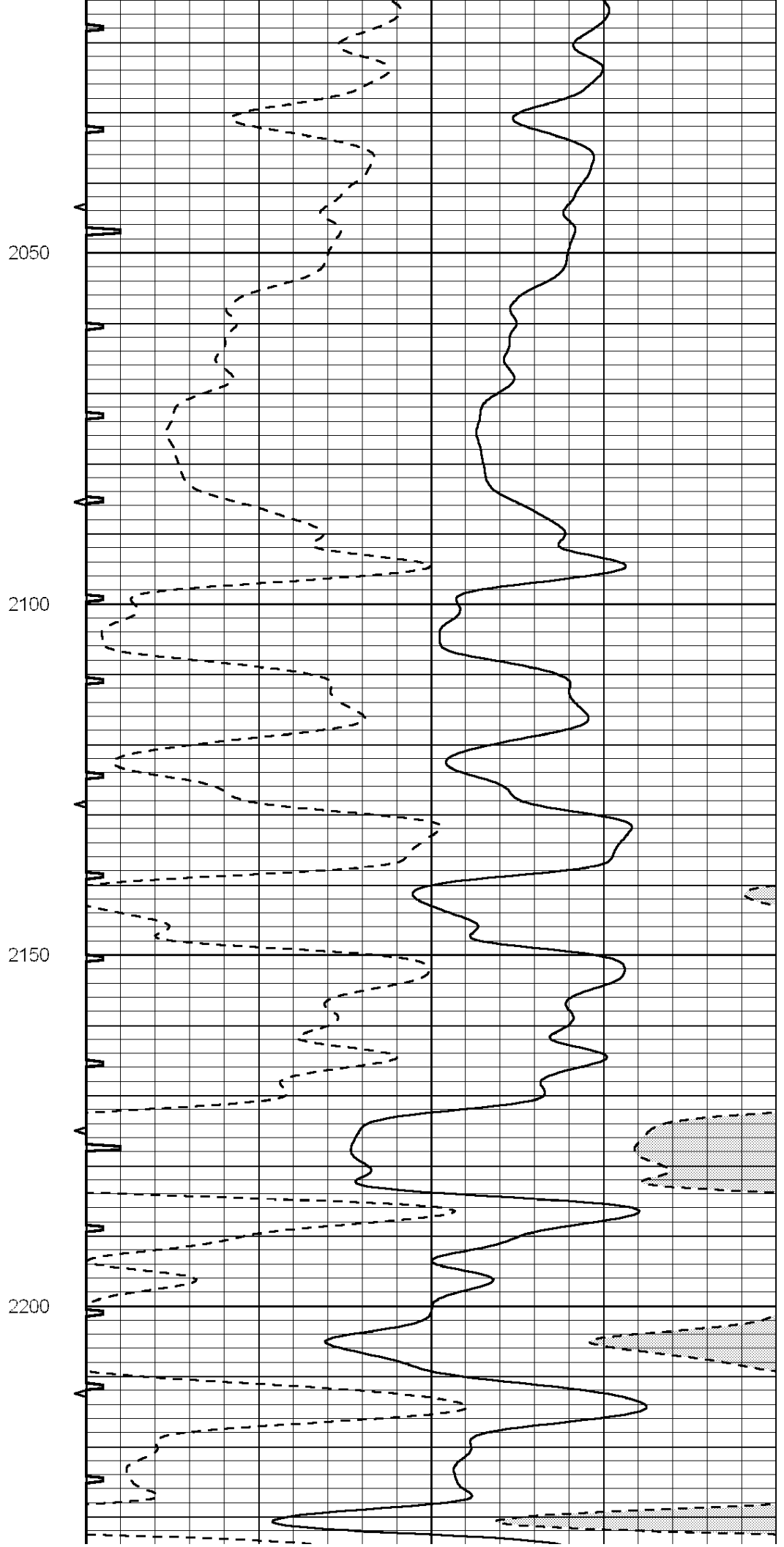
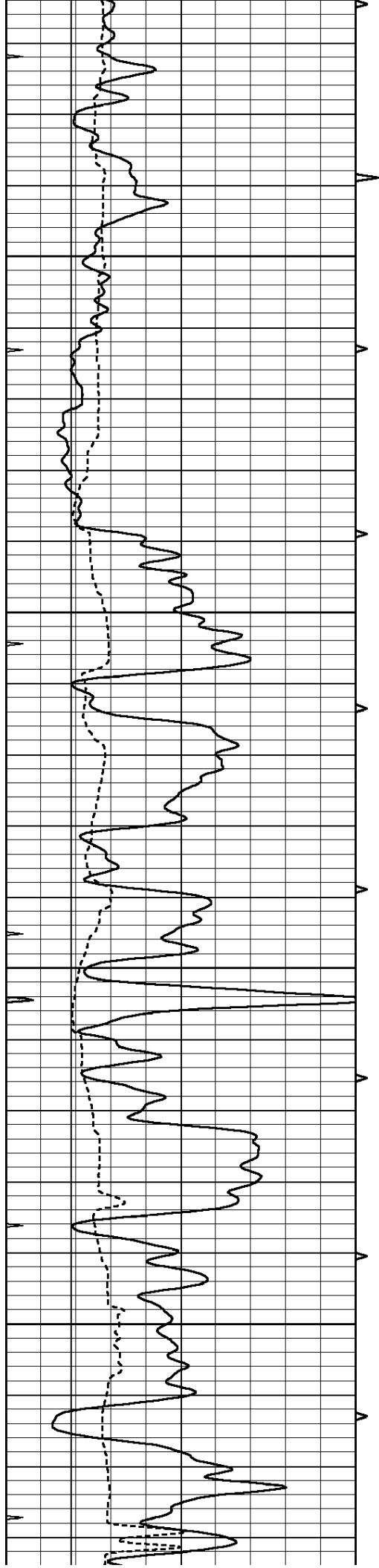
1500

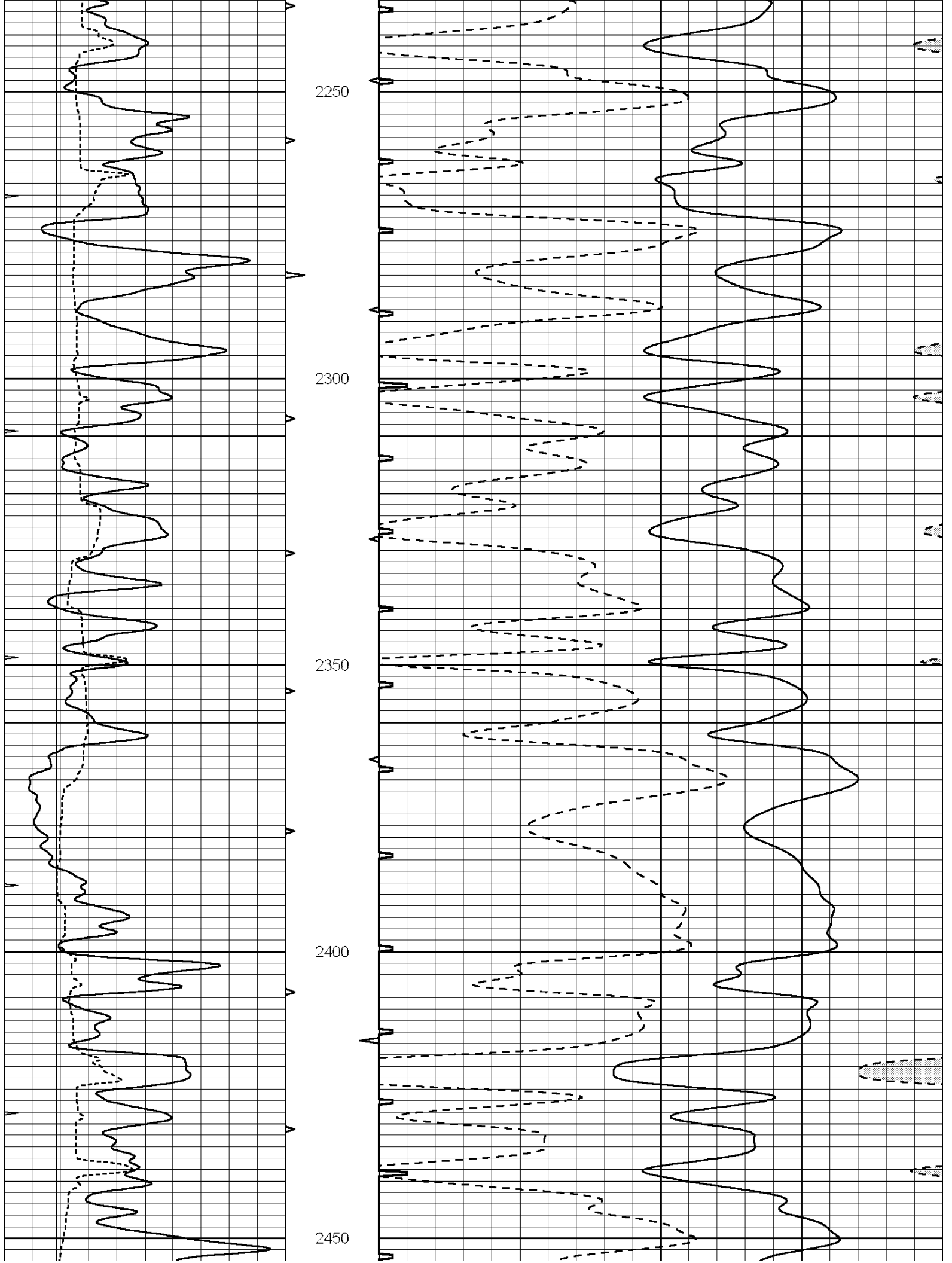
1550

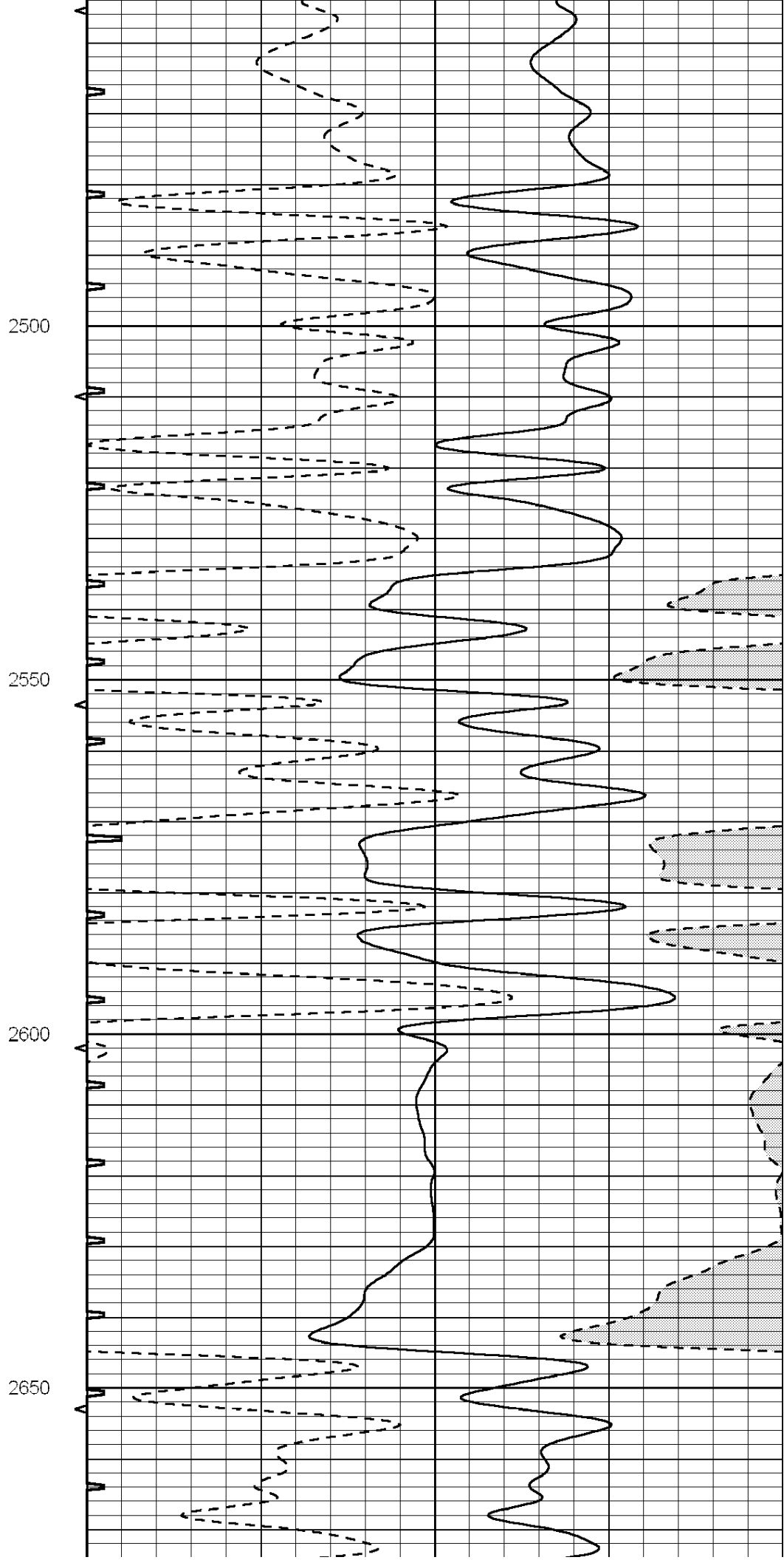
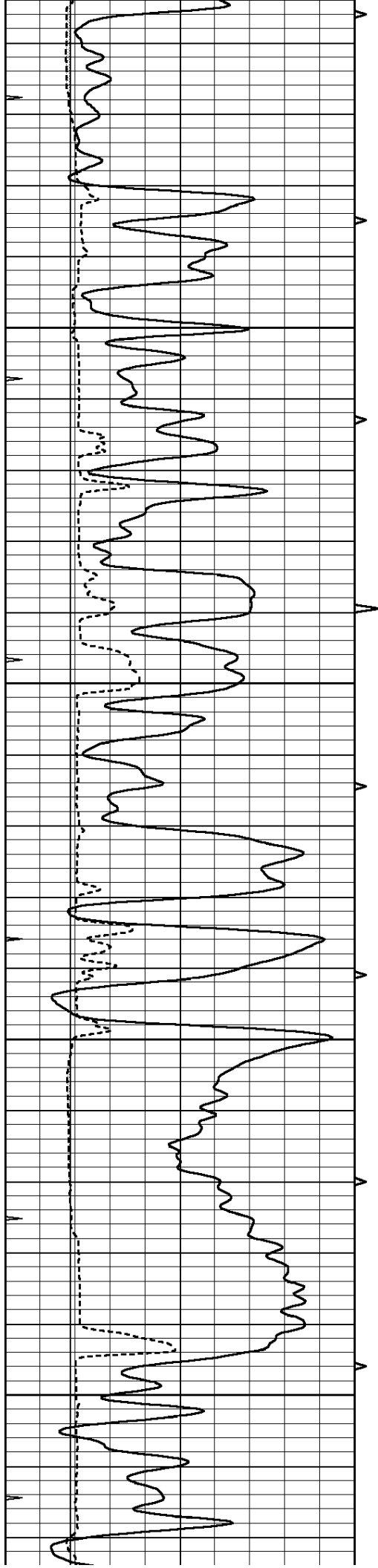


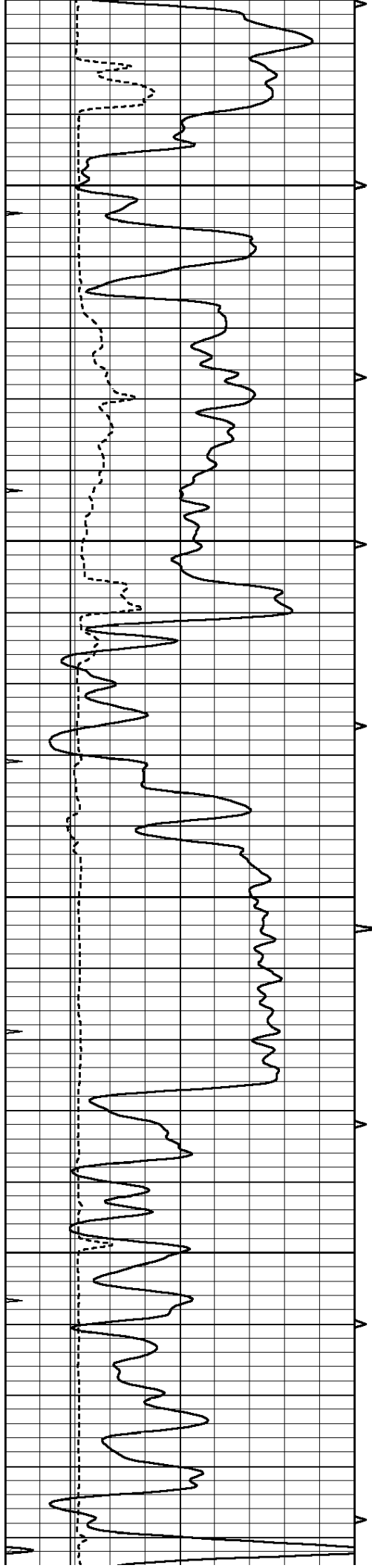










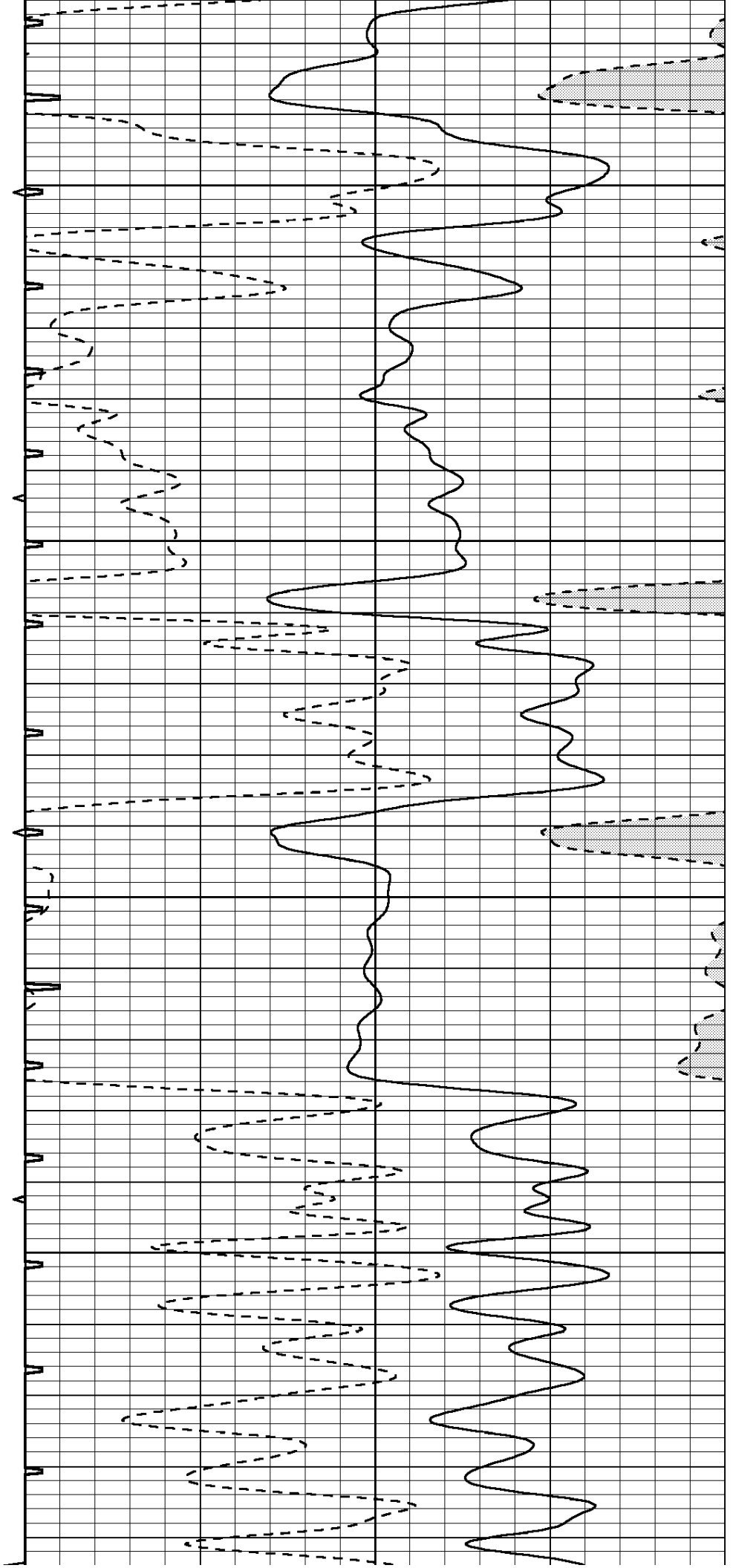


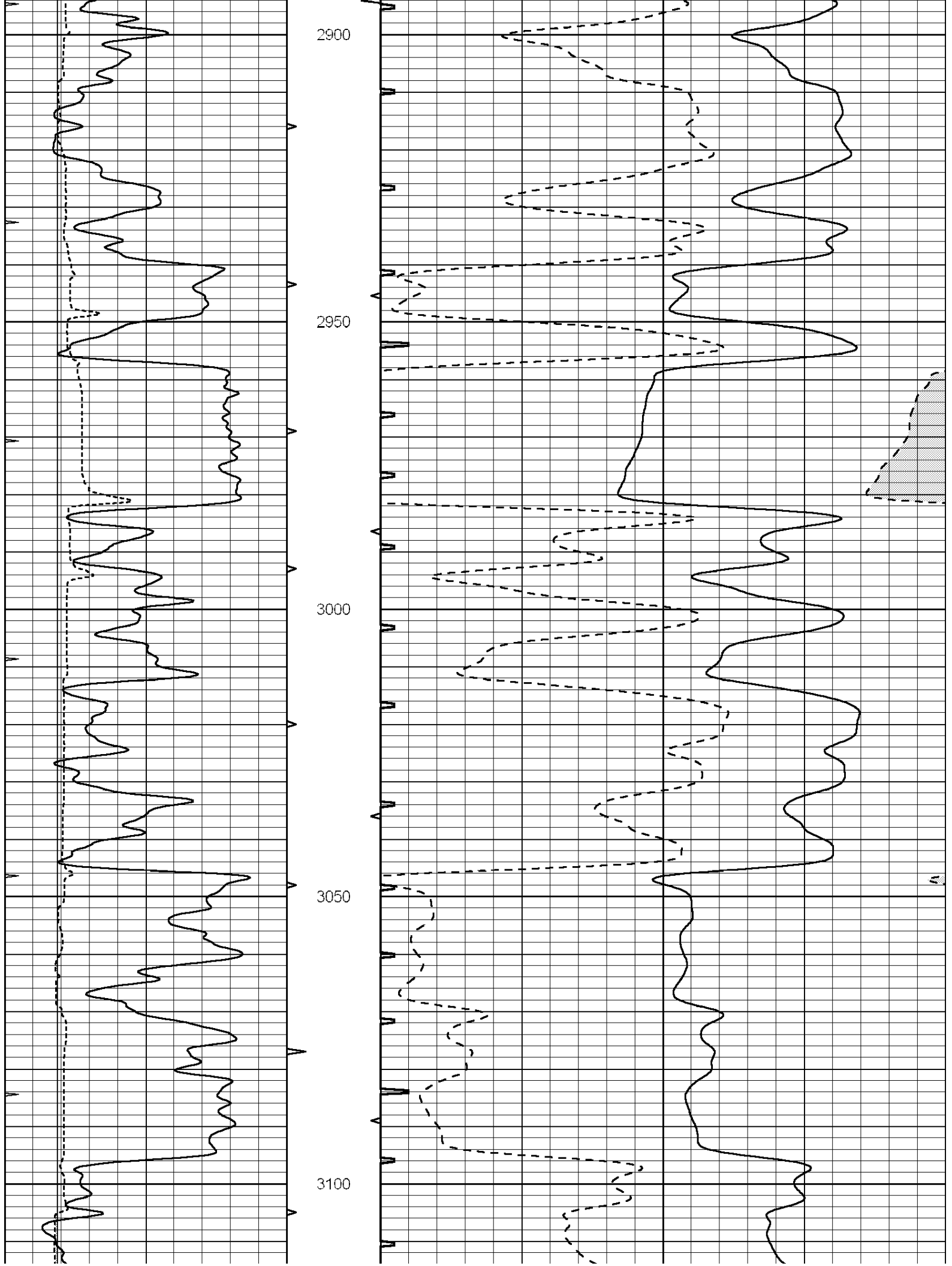
2700

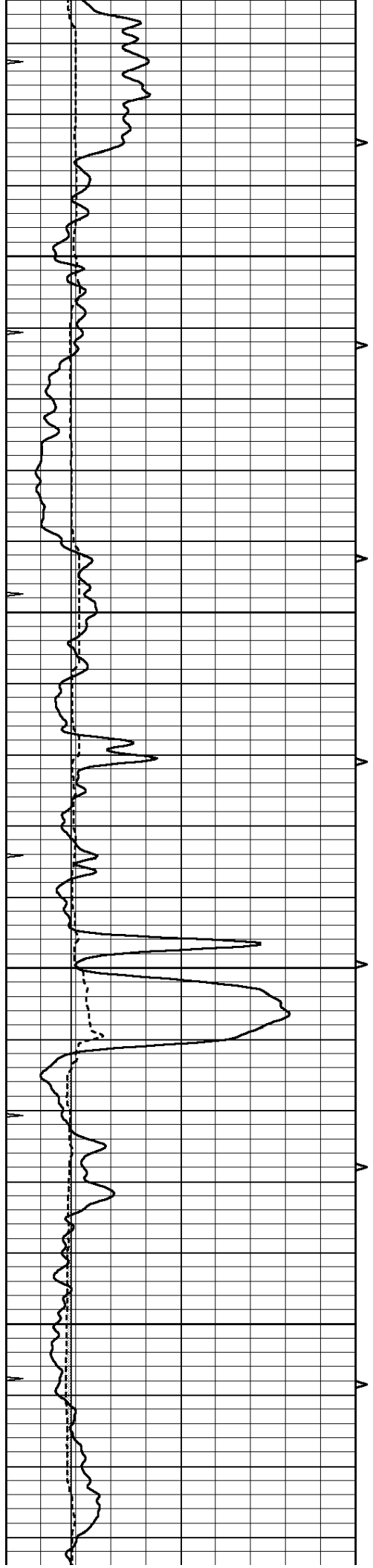
2750

2800

2850





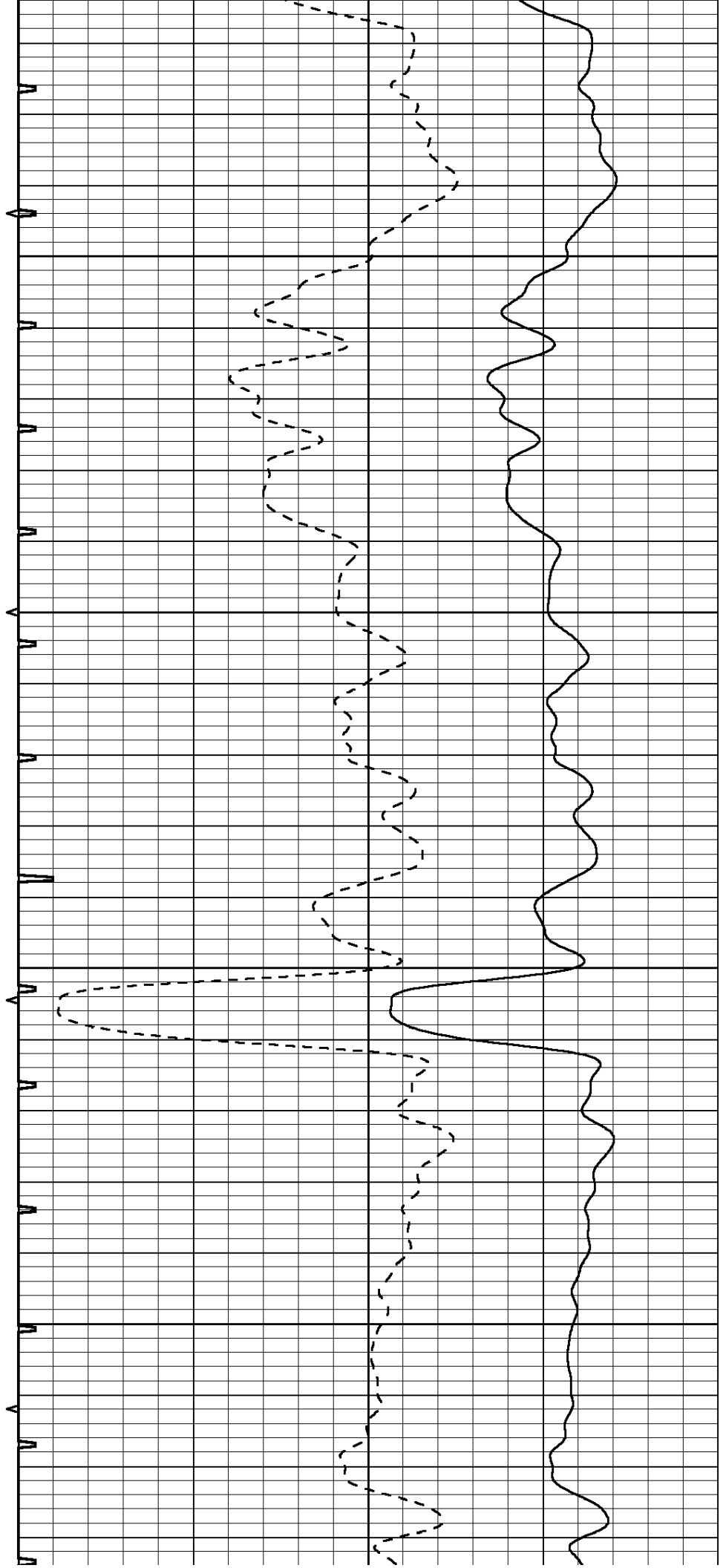


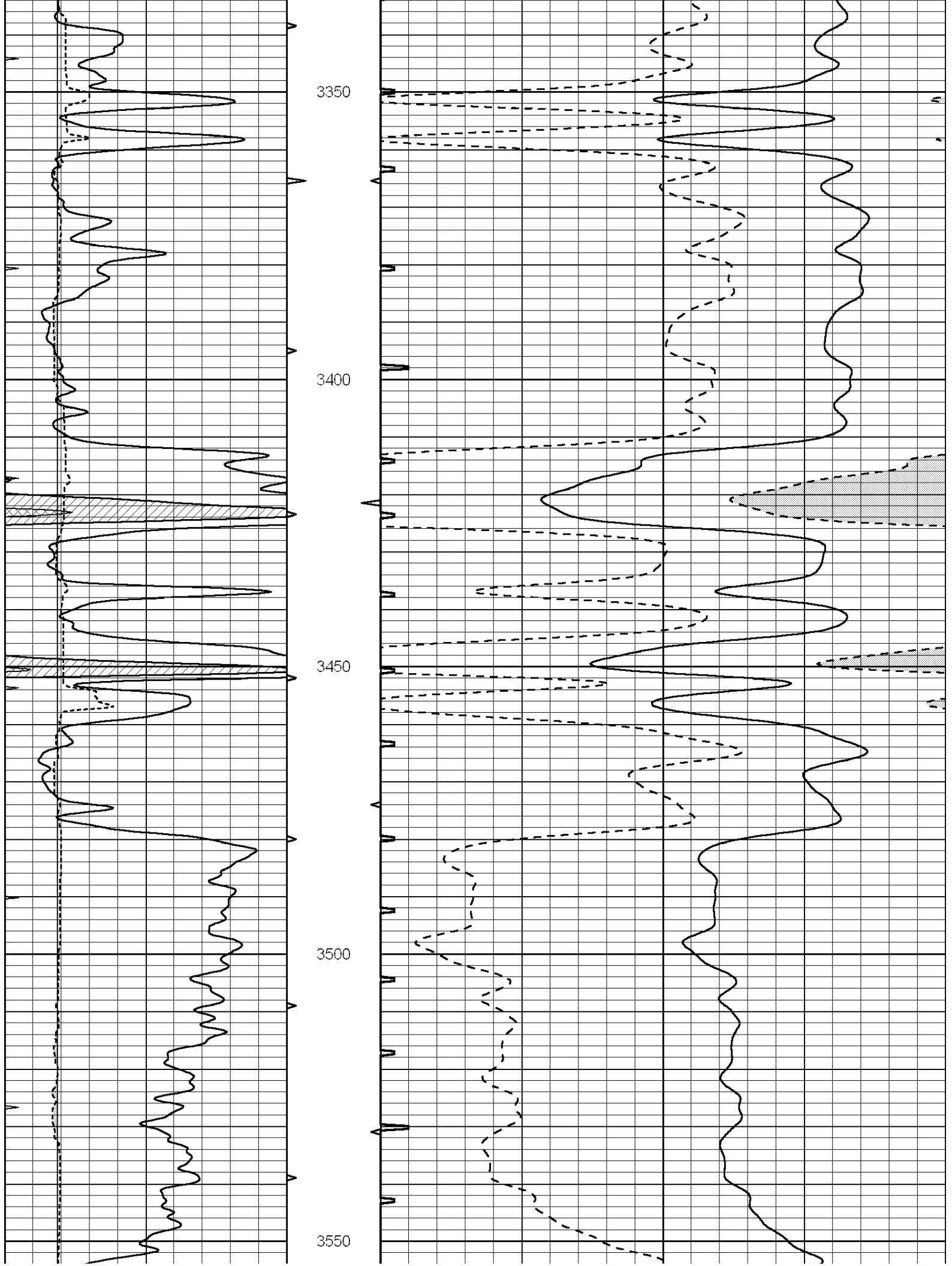
3150

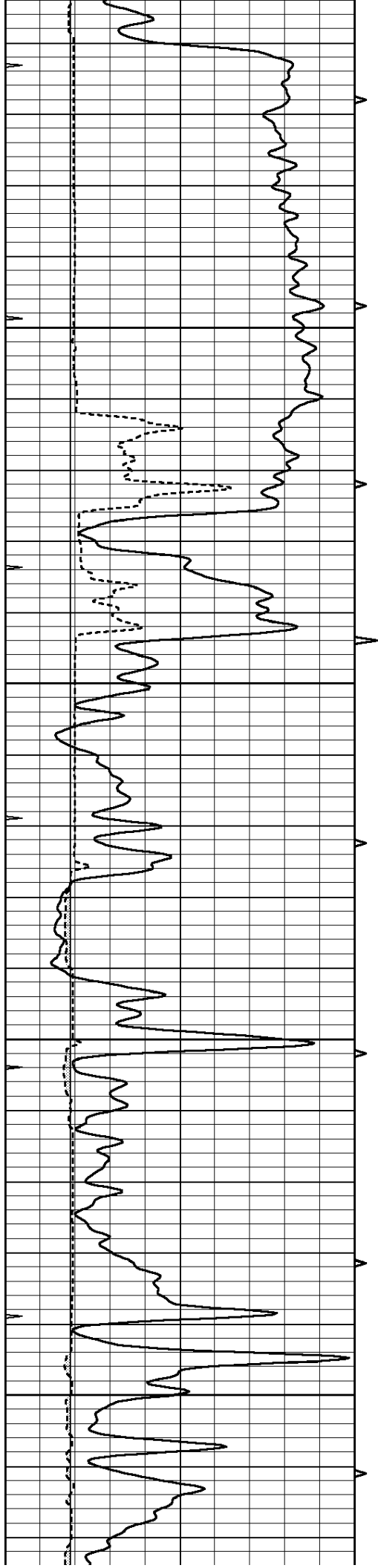
3200

3250

3300





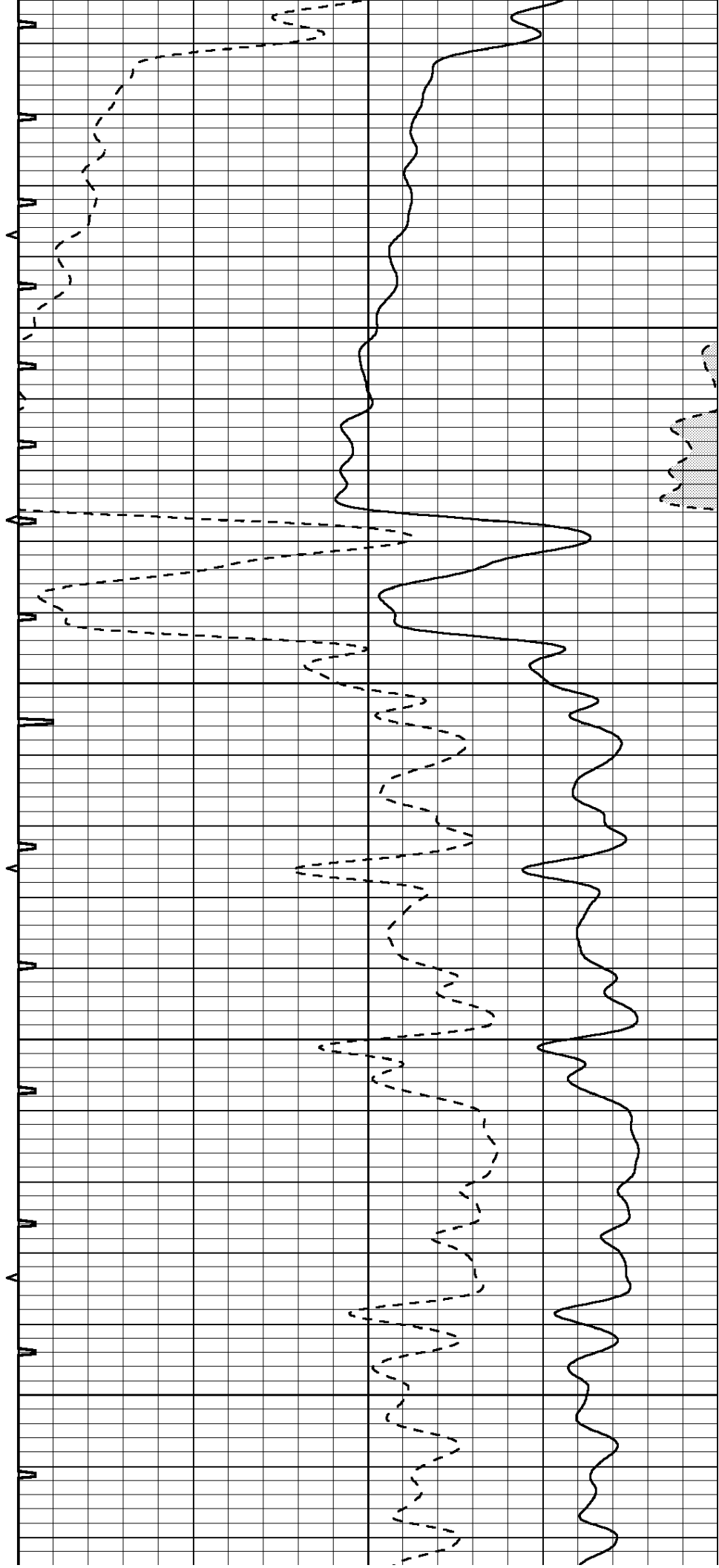


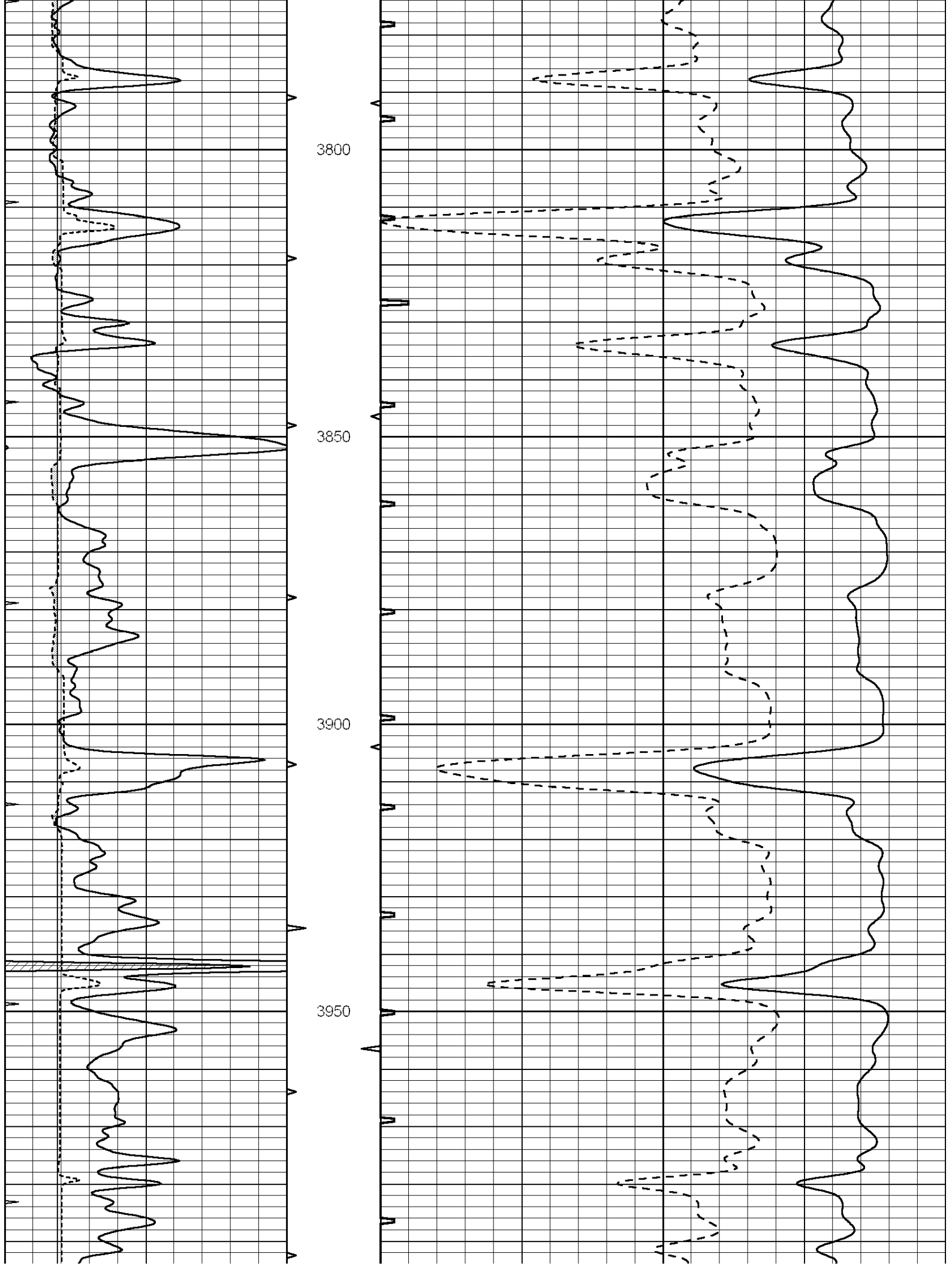
3600

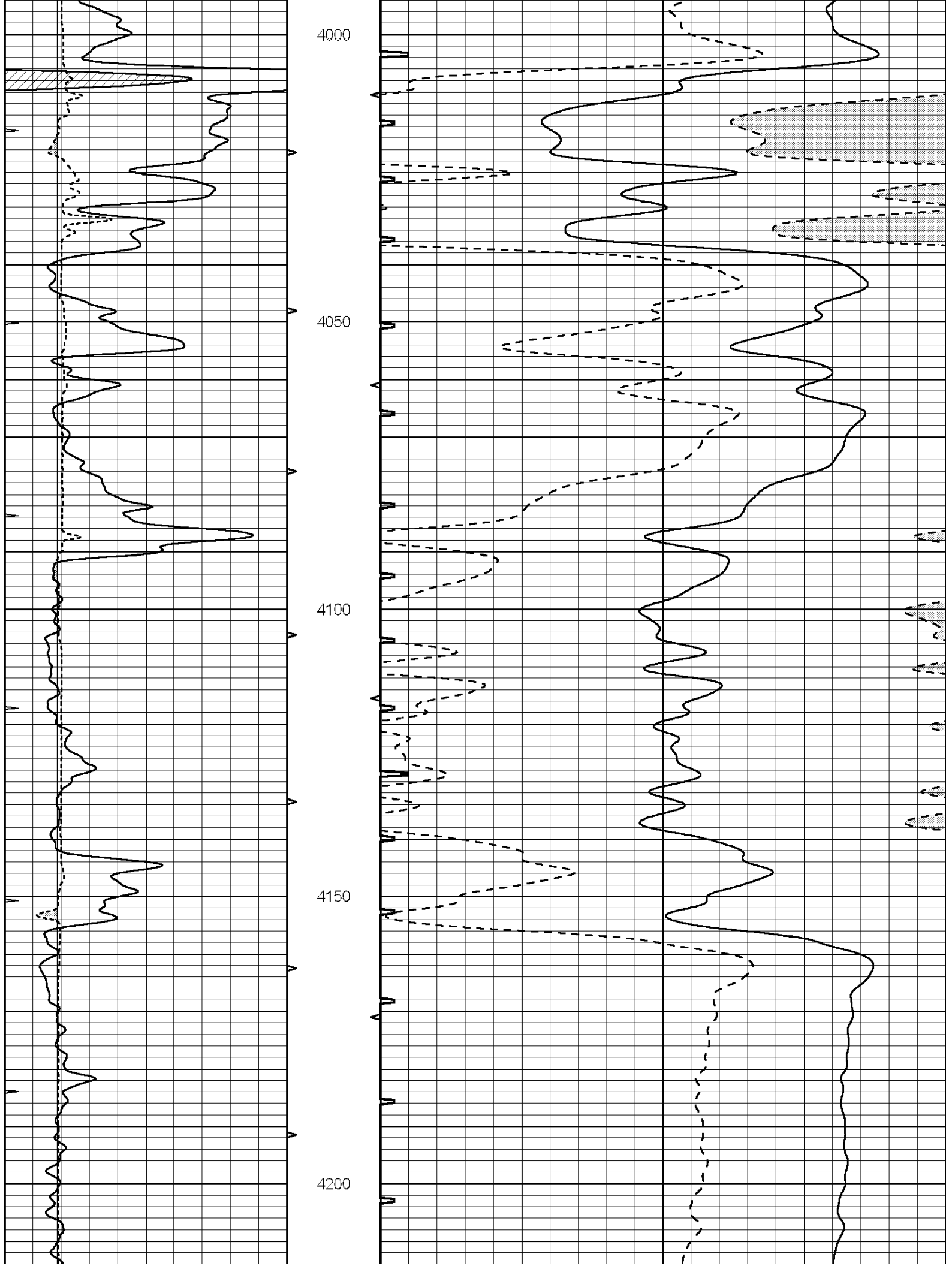
3650

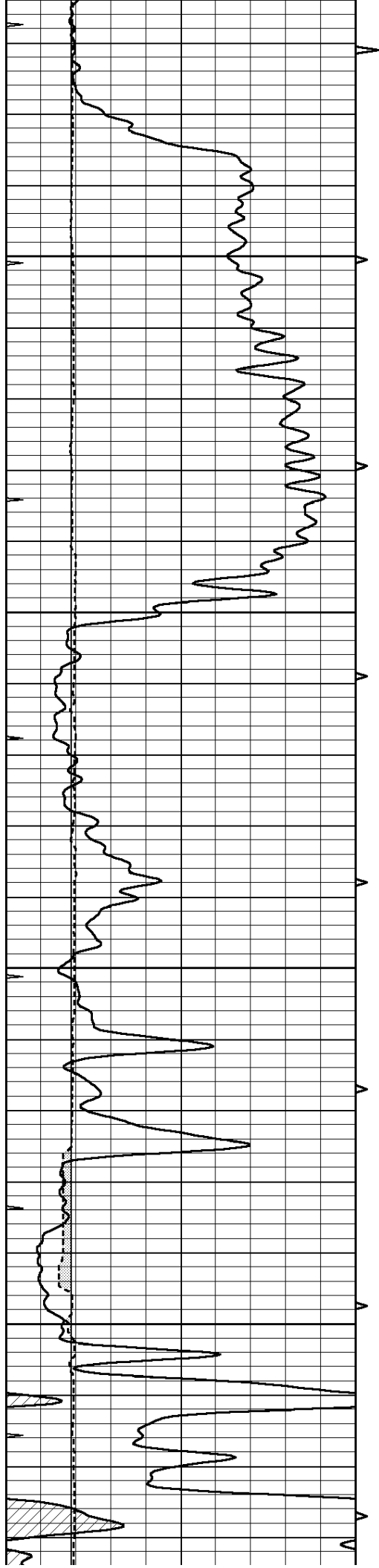
3700

3750







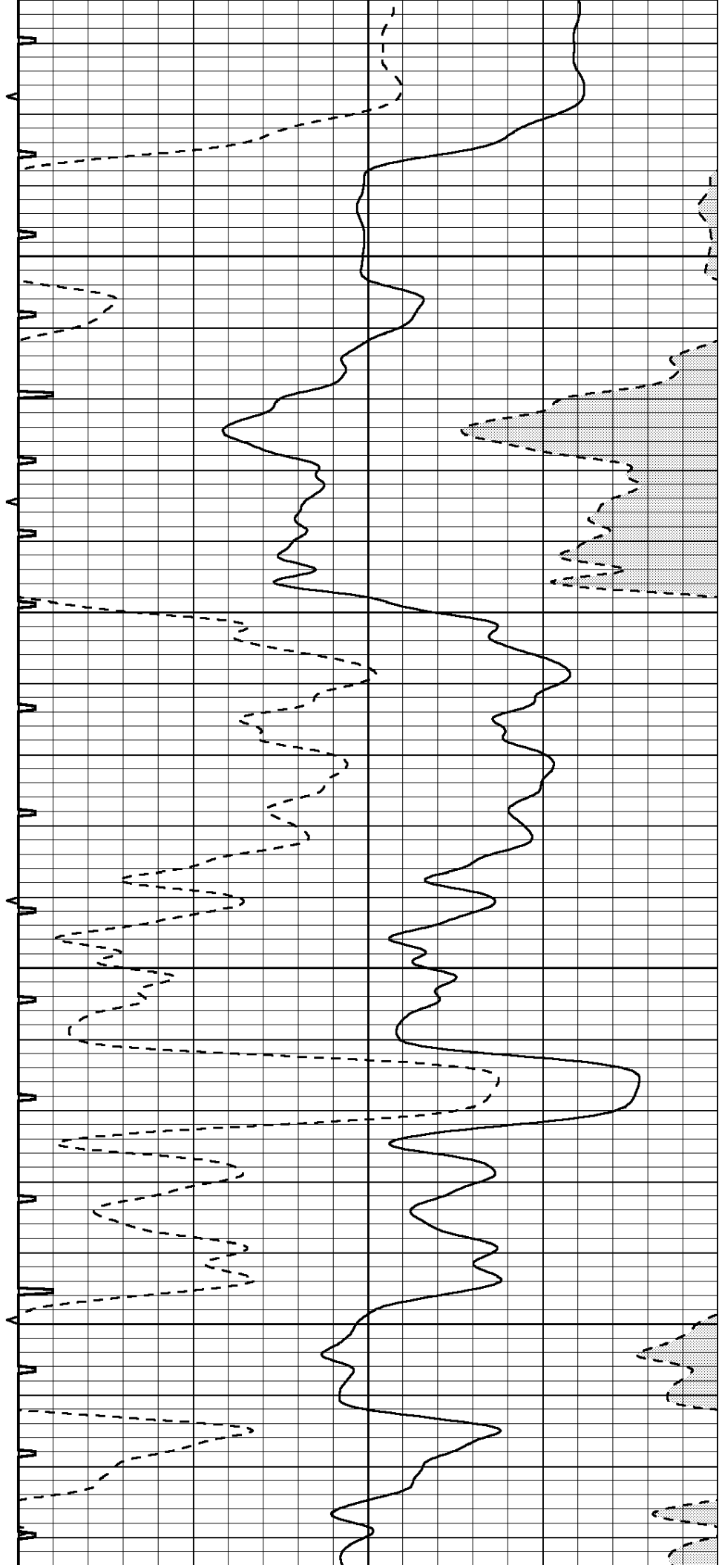


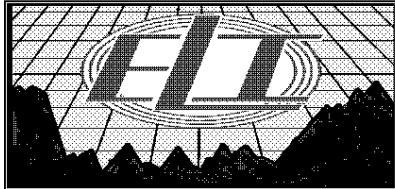
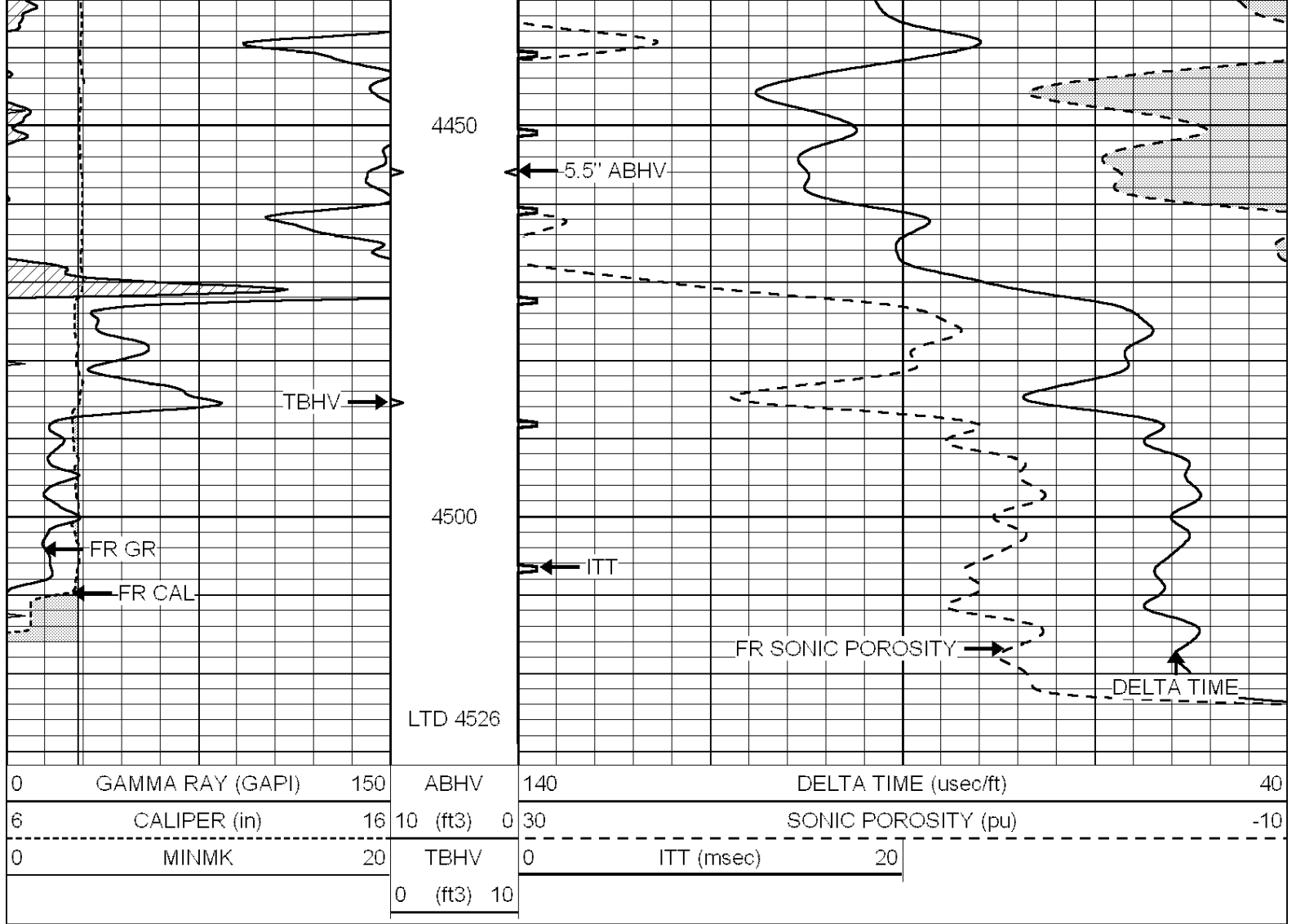
4250

4300

4350

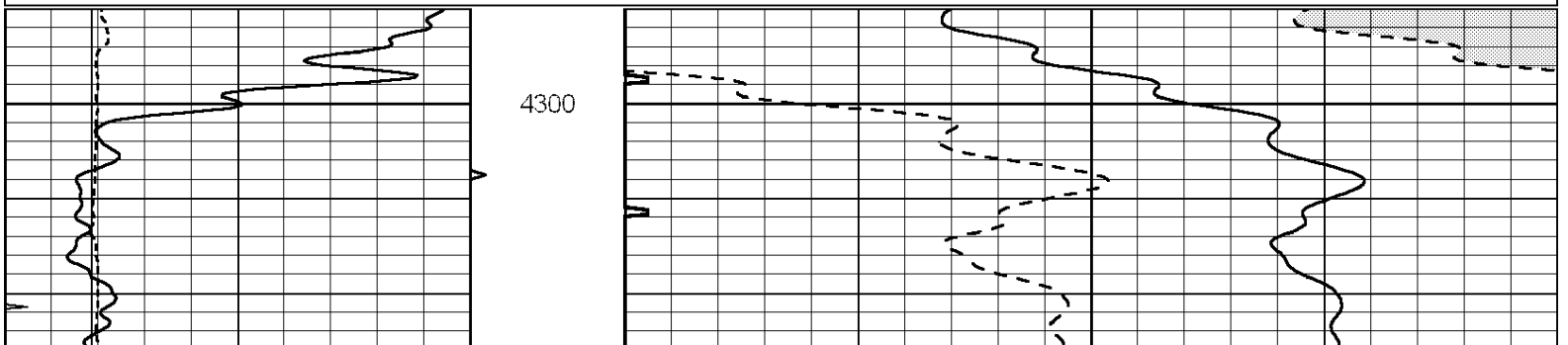
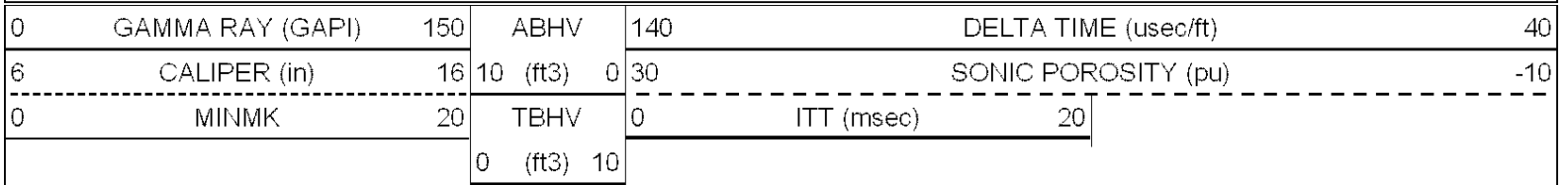
4400

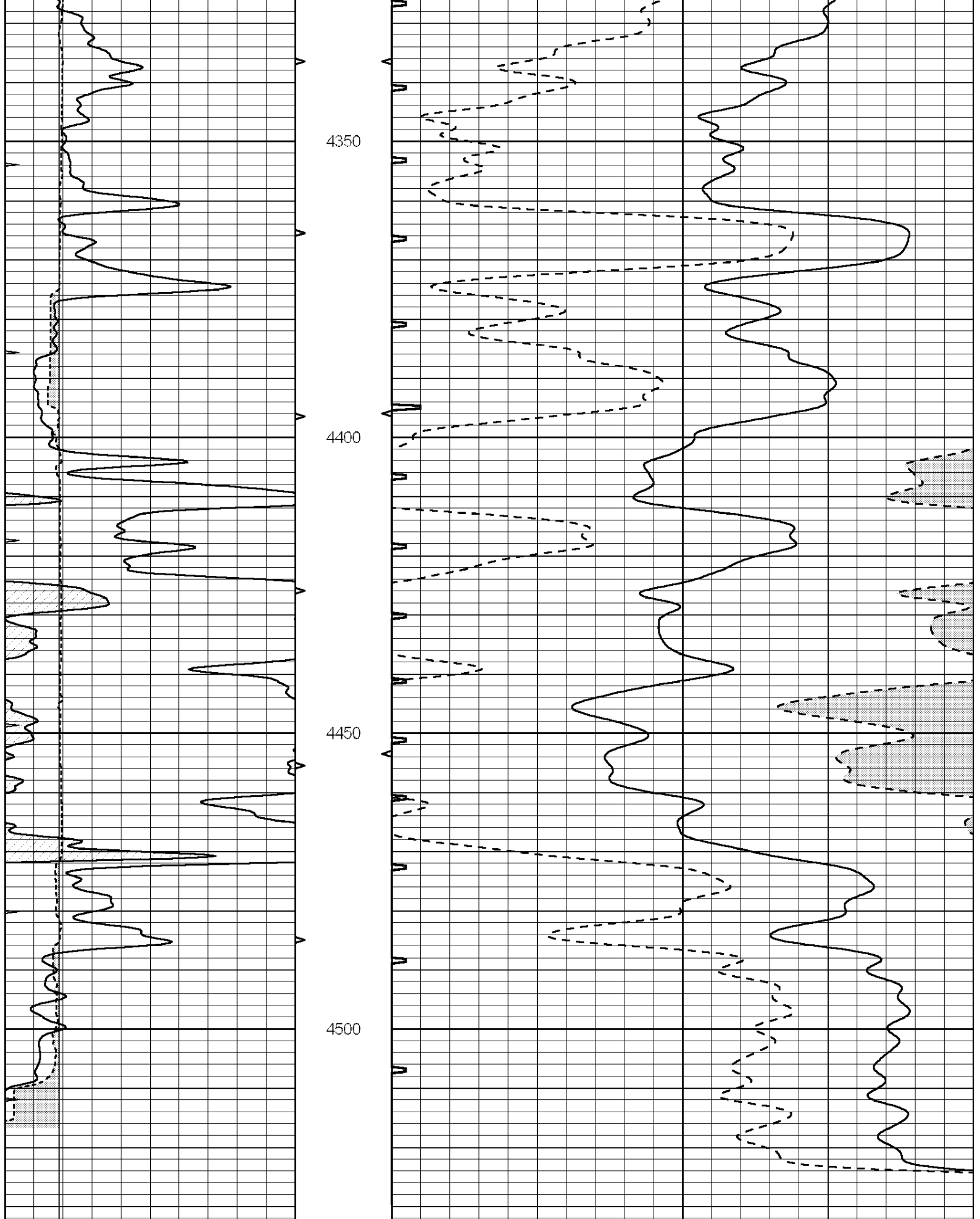




REPEAT SECTION

Database File: 2651pe.db
 Dataset Pathname: pass5.1
 Presentation Format: slt
 Dataset Creation: Tue Jun 12 03:45:38 2018 by Calc SOC 120430
 Charted by: Depth in Feet scaled 1:240





| | | | | | | |
|---|------------------|-----|----------|-----|----------------------|---------------------|
| 0 | GAMMA RAY (GAPI) | 150 | ABHV | 140 | DELTA TIME (usec/ft) | 40 |
| 6 | CALIPER (in) | 16 | 10 (ft3) | 0 | 30 | SONIC POROSITY (pu) |
| 0 | MINMK | 20 | TBHV | 0 | ITT (msec) | 20 |
| | | | | | | -10 |

