



**MICRO LOG**

Company SIROKY OIL MANAGEMENT  
 Well GREEN GROUP #1-24  
 Field WILDCAT  
 County PRATT  
 State KANSAS

Company SIROKY OIL MANAGEMENT  
 Well GREEN GROUP #1-24  
 Field WILDCAT  
 County PRATT State KANSAS

Location: API # : 15-151-22471-0000  
 926' FSL & 569' FWL  
 SE - NW - SW - SW  
 Permanent Datum GROUND LEVEL Elevation 1797  
 Log Measured From KELLY BUSHING 12' A.G.L.  
 Drilling Measured From KELLY BUSHING  
 SEC 24 TWP 27S RGE 12W  
 Other Services  
 CDL/CNL/PE  
 DIL/SONIC  
 Elevation  
 K.B. 1809  
 D.F. 1807  
 G.L. 1797

Date	6/12/18	
Run Number	TWO	
Depth Driller	4525	
Depth Logger	4526	
Bottom Logged Interval	4510	
Top Log Interval	2500	
Casing Driller	10 3/4" @ 322'	
Casing Logger	322	
Bit Size	7 7/8"	
Type Fluid in Hole	CHEMICAL MUD	CHLORIDES 12,000 PPM
Density / Viscosity	9.1/53	
pH / Fluid Loss	10.5/12.4	
Source of Sample	FLOWLINE	
Rim @ Meas. Temp	.400 @ 90F	
Rmf @ Meas. Temp	.300 @ 90F	
Rmc @ Meas. Temp	.480 @ 90F	
Source of Rmf / Rmc	MEASUREMENT	
Rim @ BHT	.298 @ 121F	
Time Circulation Stopped	4.5 HOURS	
Time Logger on Bottom	3:45 A.M.	
Maximum Recorded Temperature	121F	
Equipment Number	922339	
Location	HAYS, KANSAS	
Recorded By	JEFF LUEBBERS	
Witnessed By	RYAN DAVIS	

<<< Fold Here >>>

All interpretations are opinions based on inferences from electrical or other measurements and we cannot and do not guarantee the accuracy or correctness of any interpretation, and we shall not, except in the case of gross or willful negligence on our part, be liable or responsible for any loss, costs, damages, or expenses incurred or sustained by anyone resulting from any interpretation made by any of our officers, agents or employees. These interpretations are also subject to our general terms and conditions set out in our current Price Schedule.

**Comments**

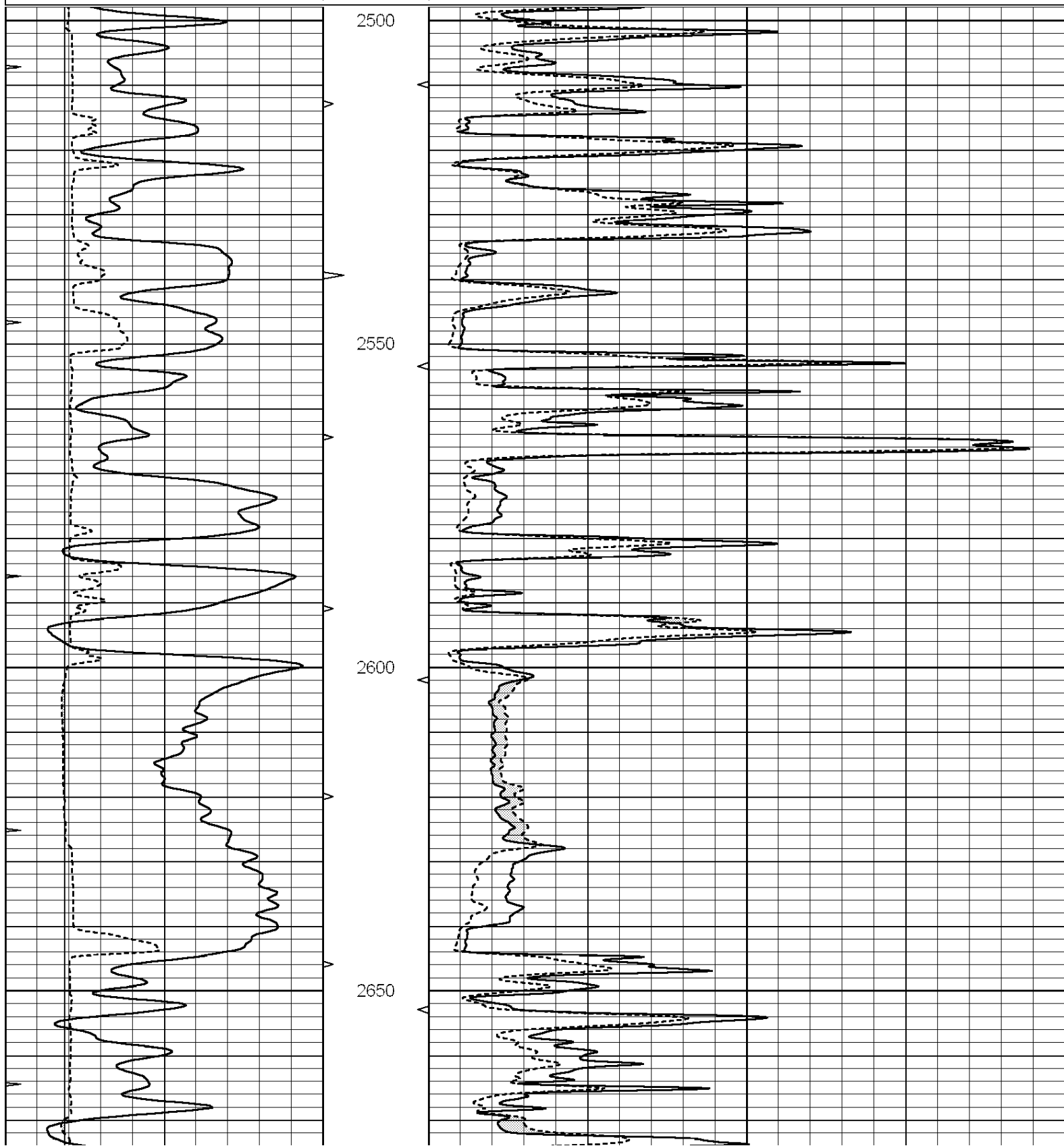
THANK YOU FOR USING ELI WIRELINE HAYS, KANSAS (785) 628-6395  
 DIRECTIONS  
 PRATT, KS., 5E. ON HWY 54 YO "60TH AVE.", N. ACROSS HWY TO ACCESS RD., 1E. TO "70TH AVE.",  
 3N., E. INTO AT GATE 1 1/4 MILE

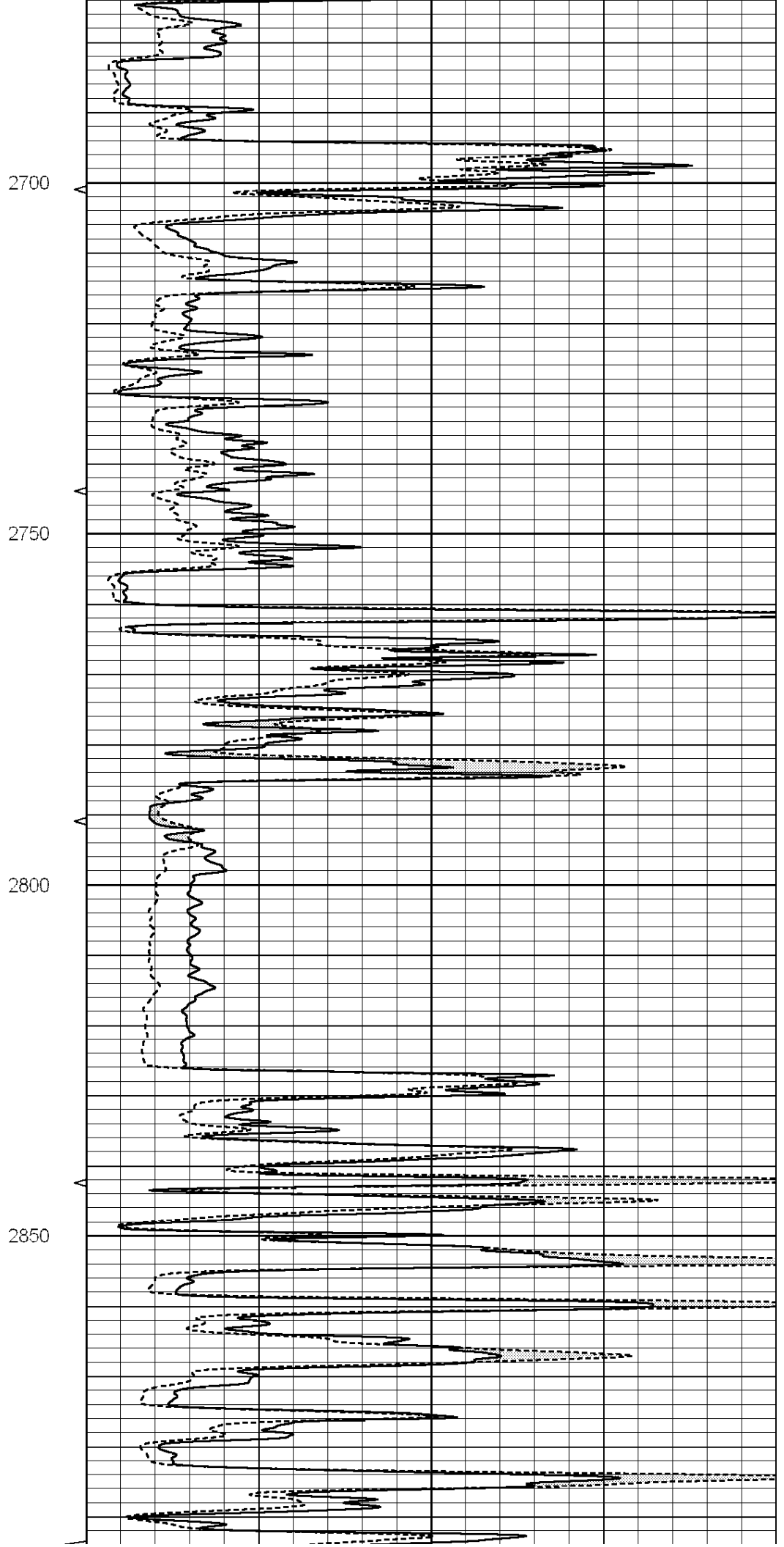
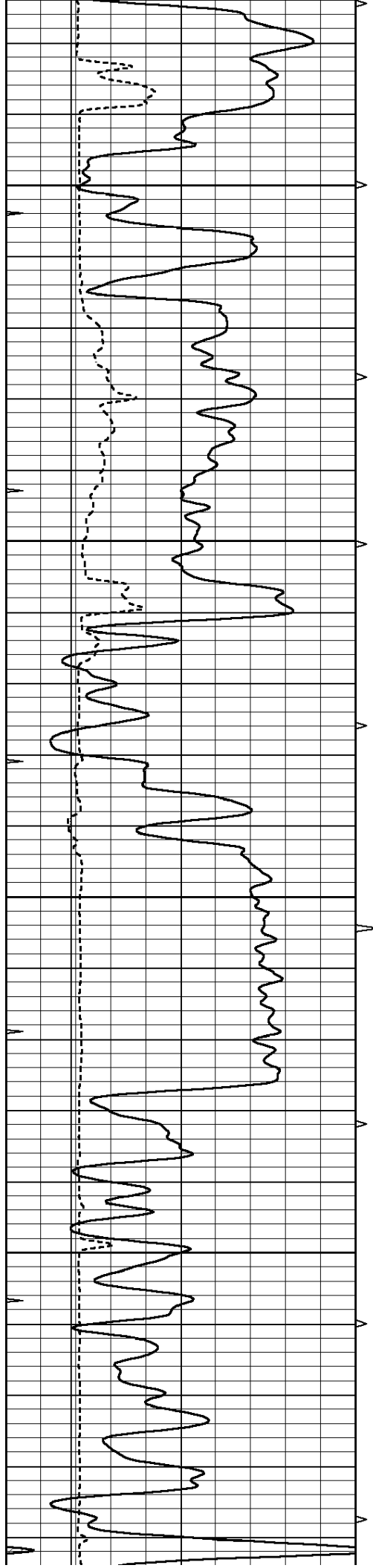


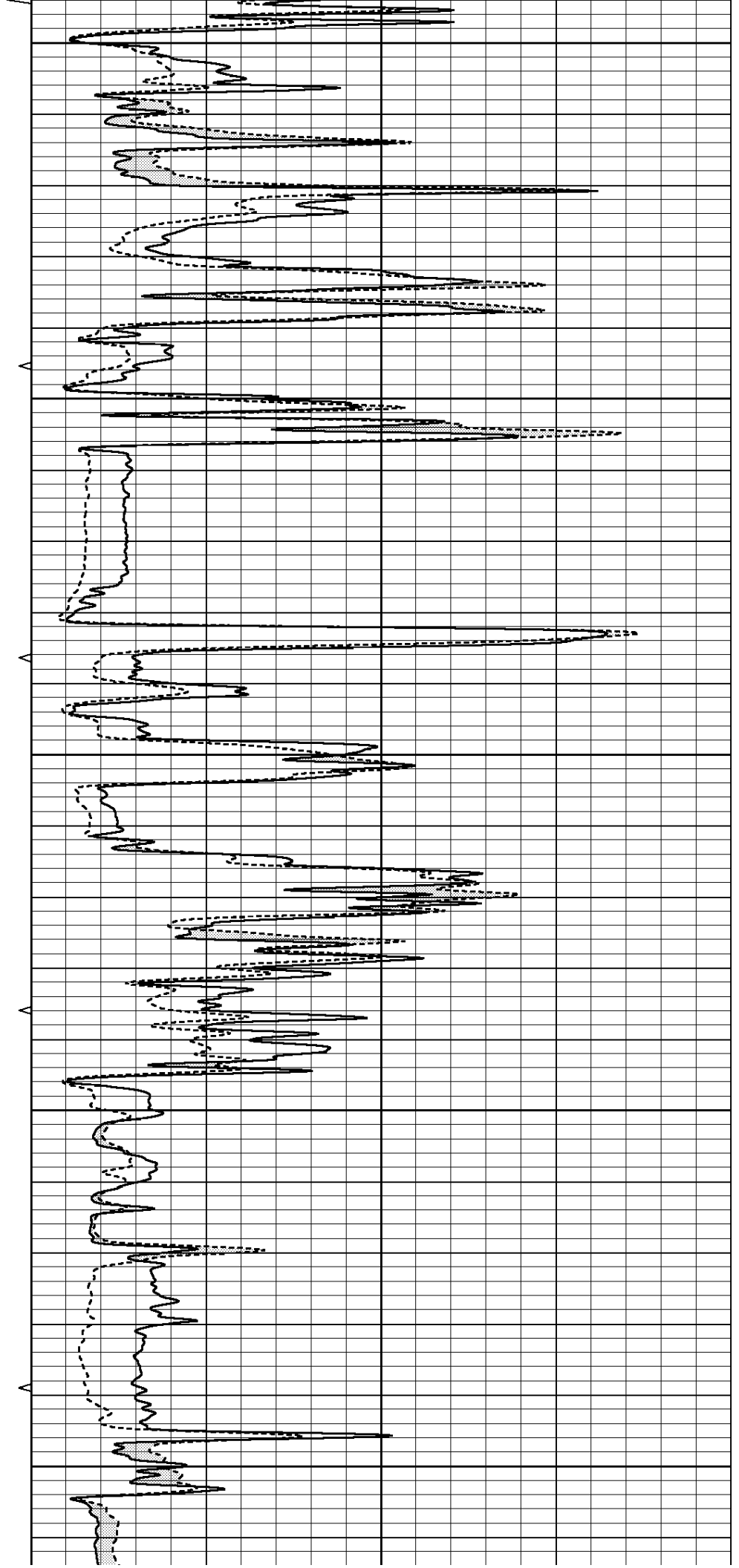
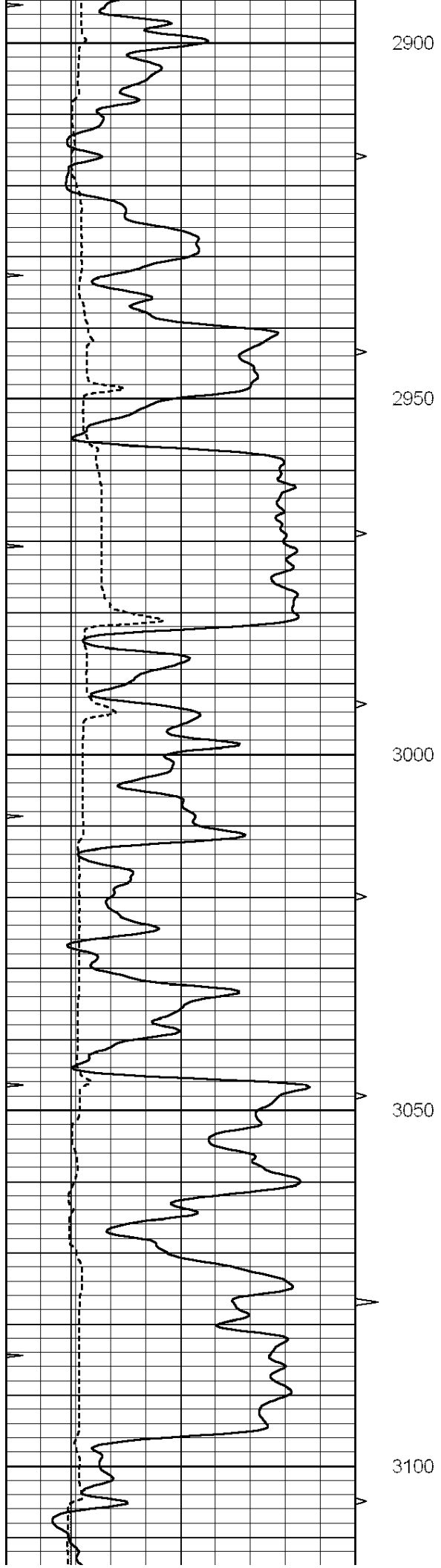
**MAIN SECTION**

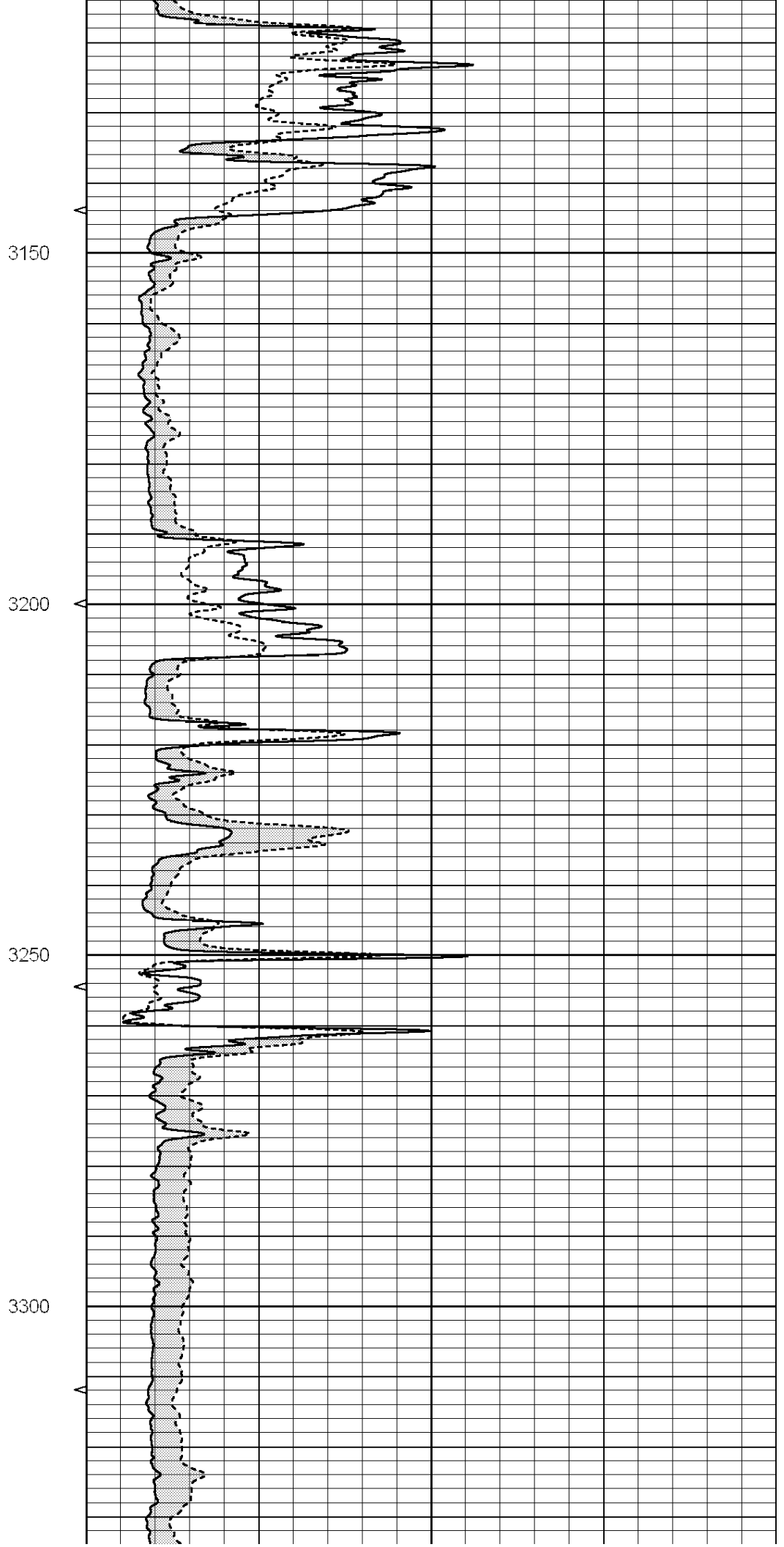
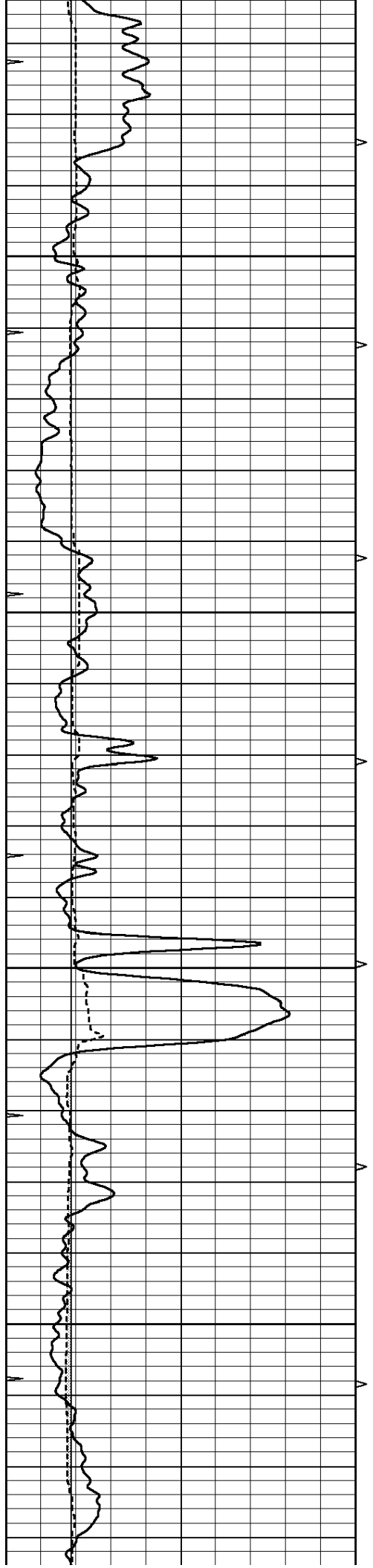
Database File: 2651pe.db  
 Dataset Pathname: pass6.5  
 Presentation Format: micro  
 Dataset Creation: Tue Jun 12 05:48:40 2018  
 Charted by: Depth in Feet scaled 1:240

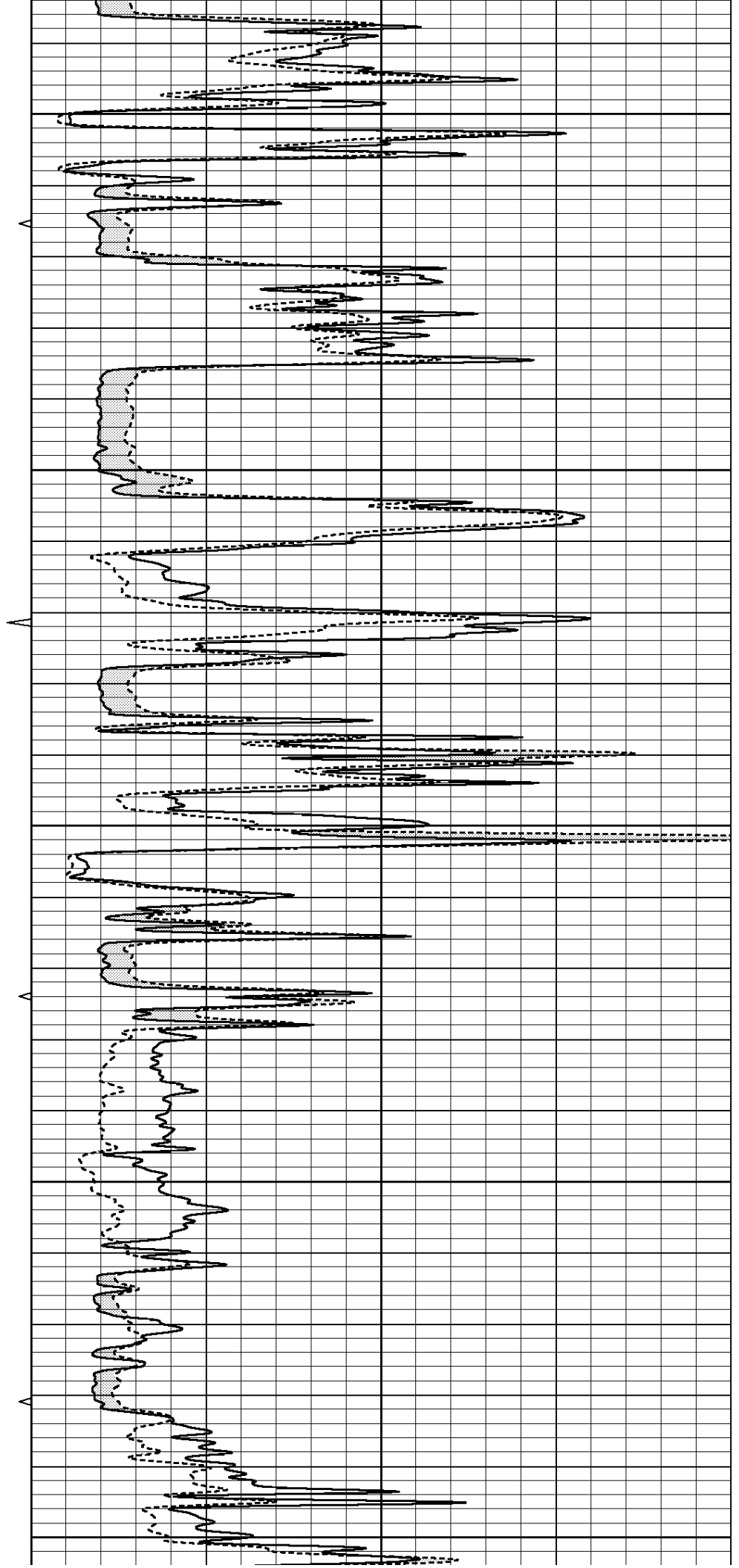
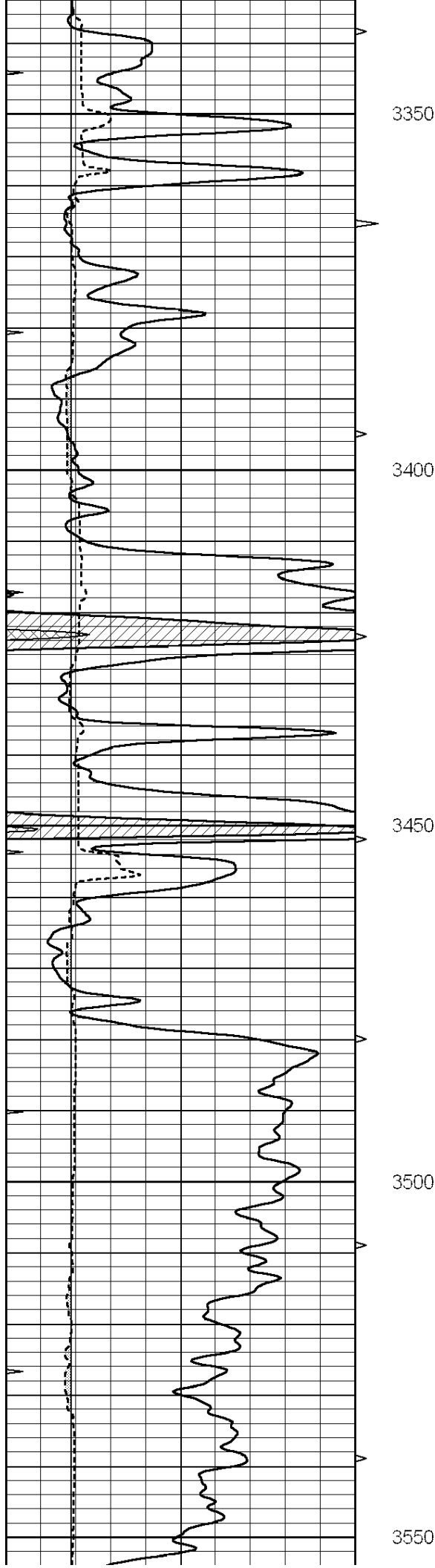
0	GAMMA RAY (GAPI)	150	ABHV	0	MEL1.5 (Ohm-m)	40
6	CALIPER (in)	16	10 (ft3)	0	MEL 20 (Ohm-m)	40
0	MINMK	20	TBHV			
			0 (ft3)	10		

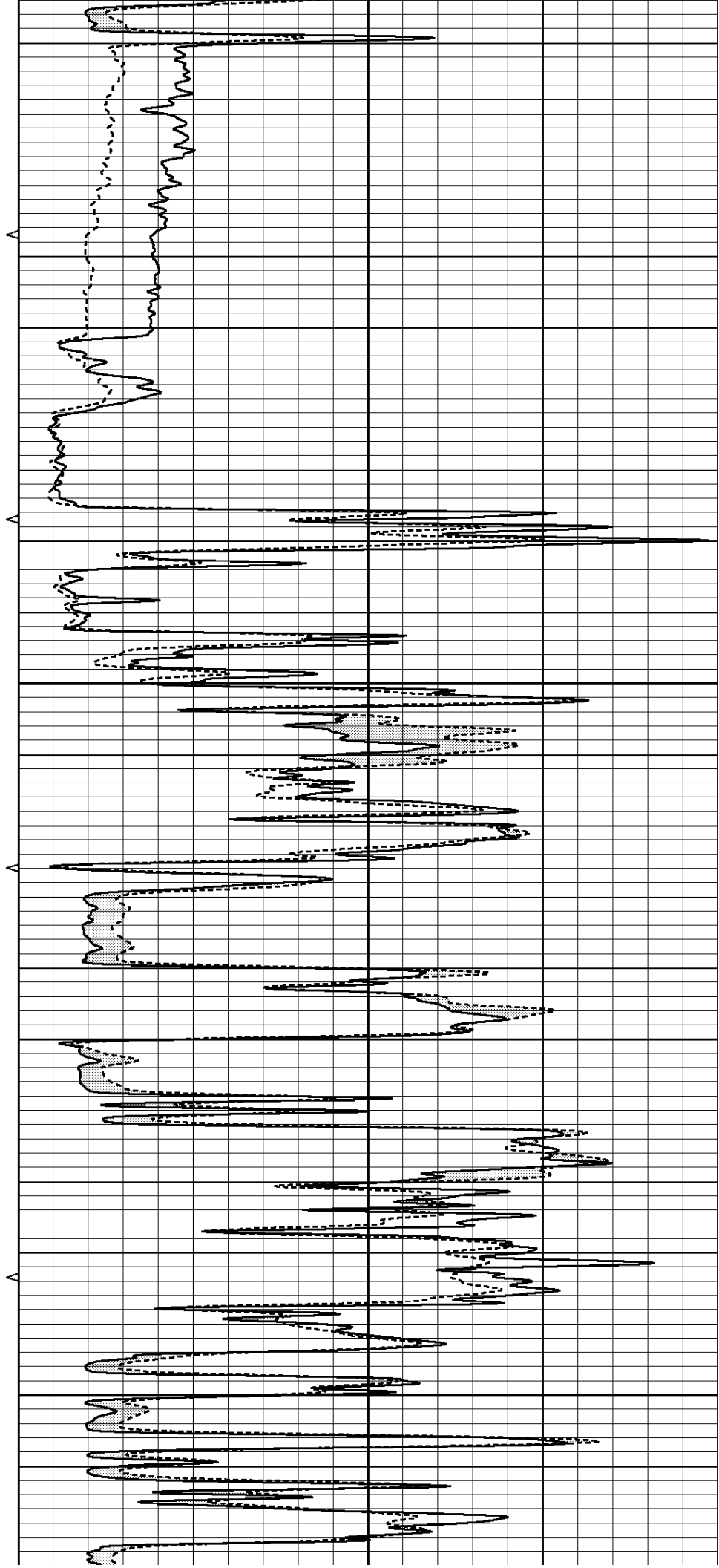
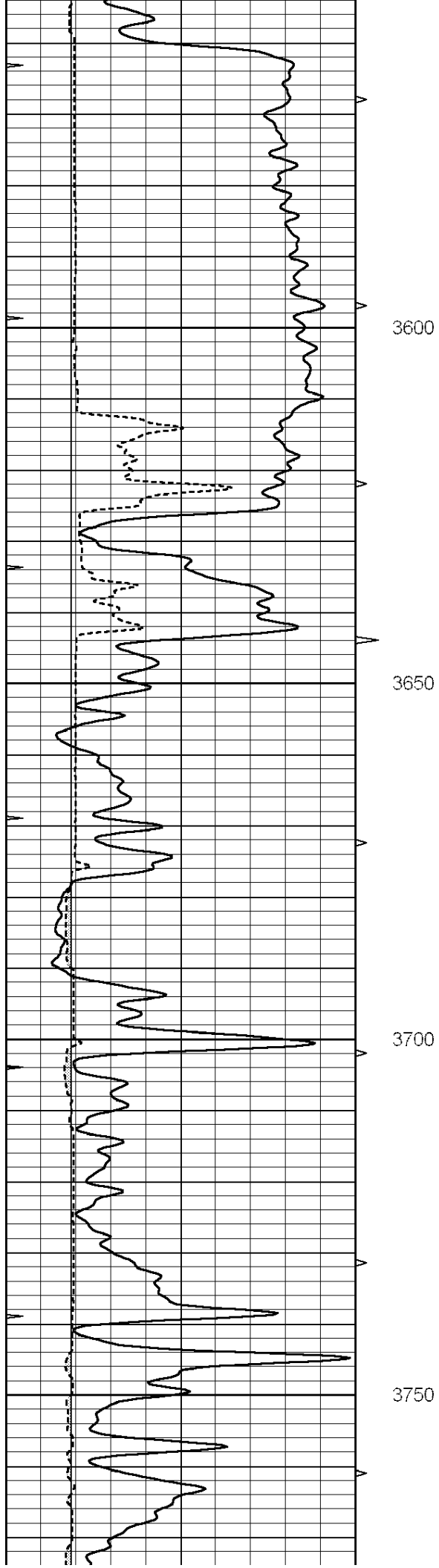


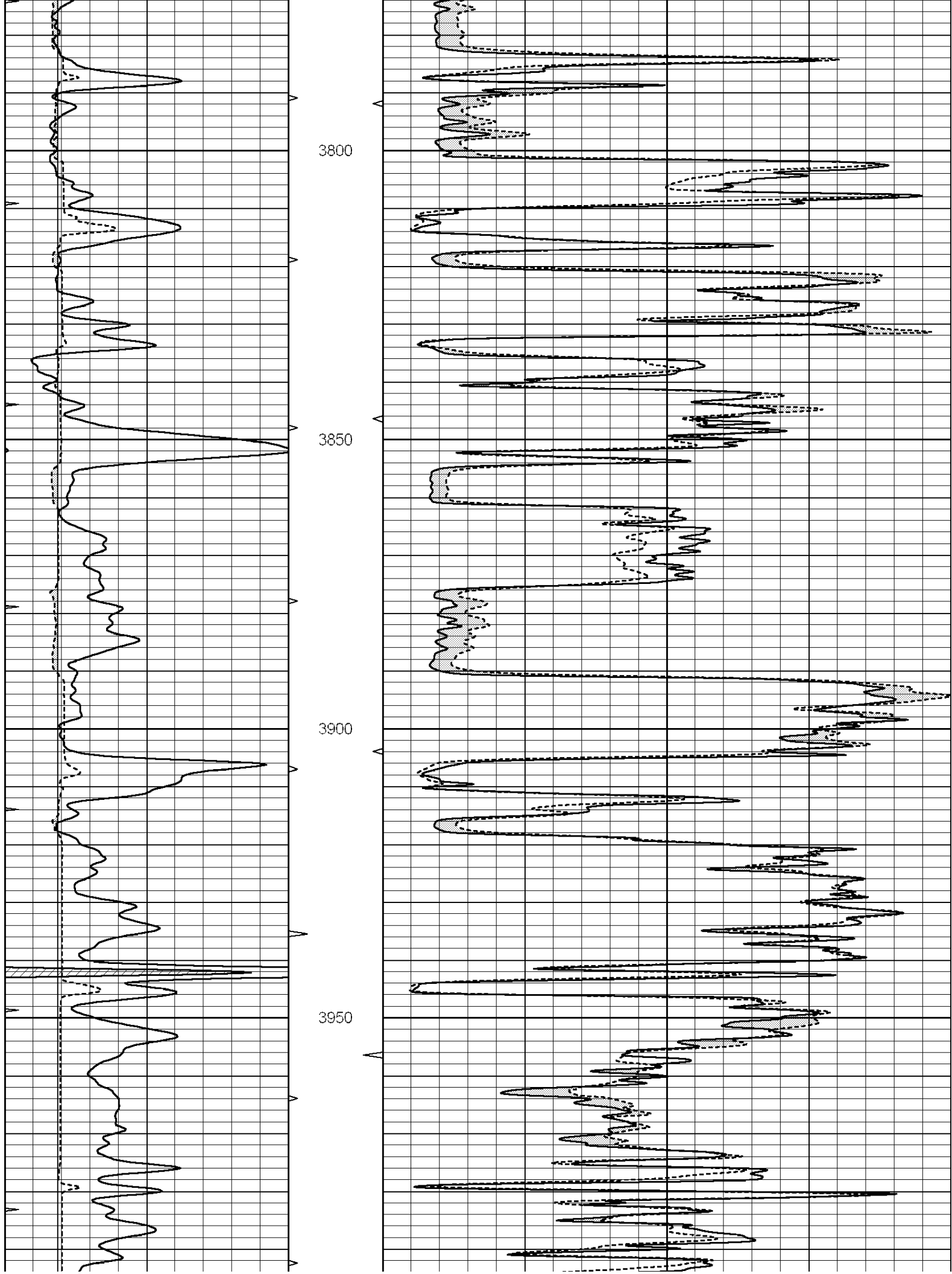


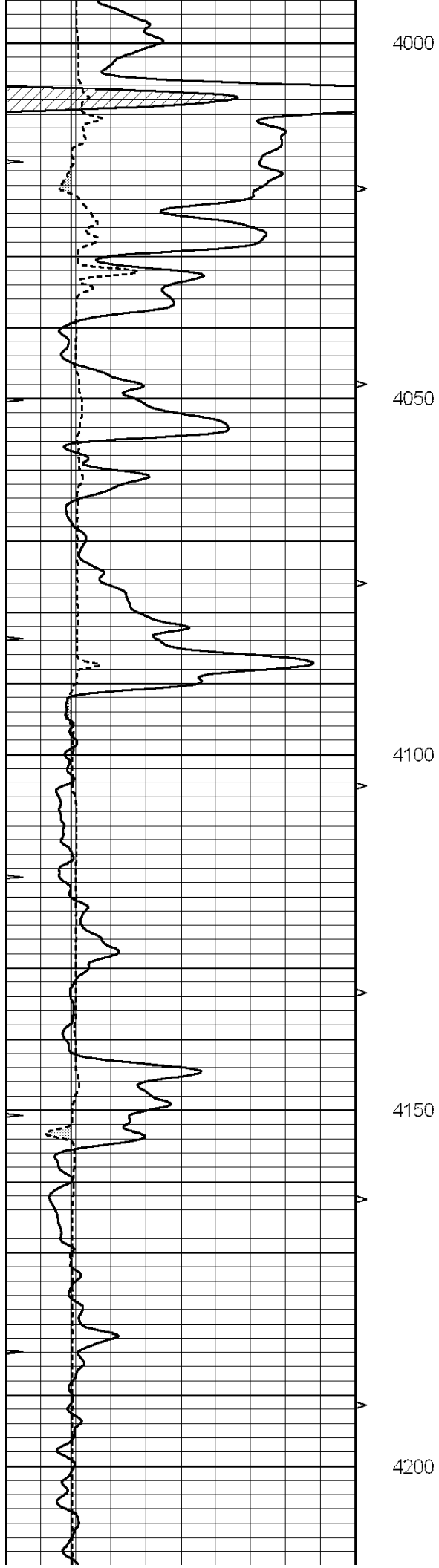












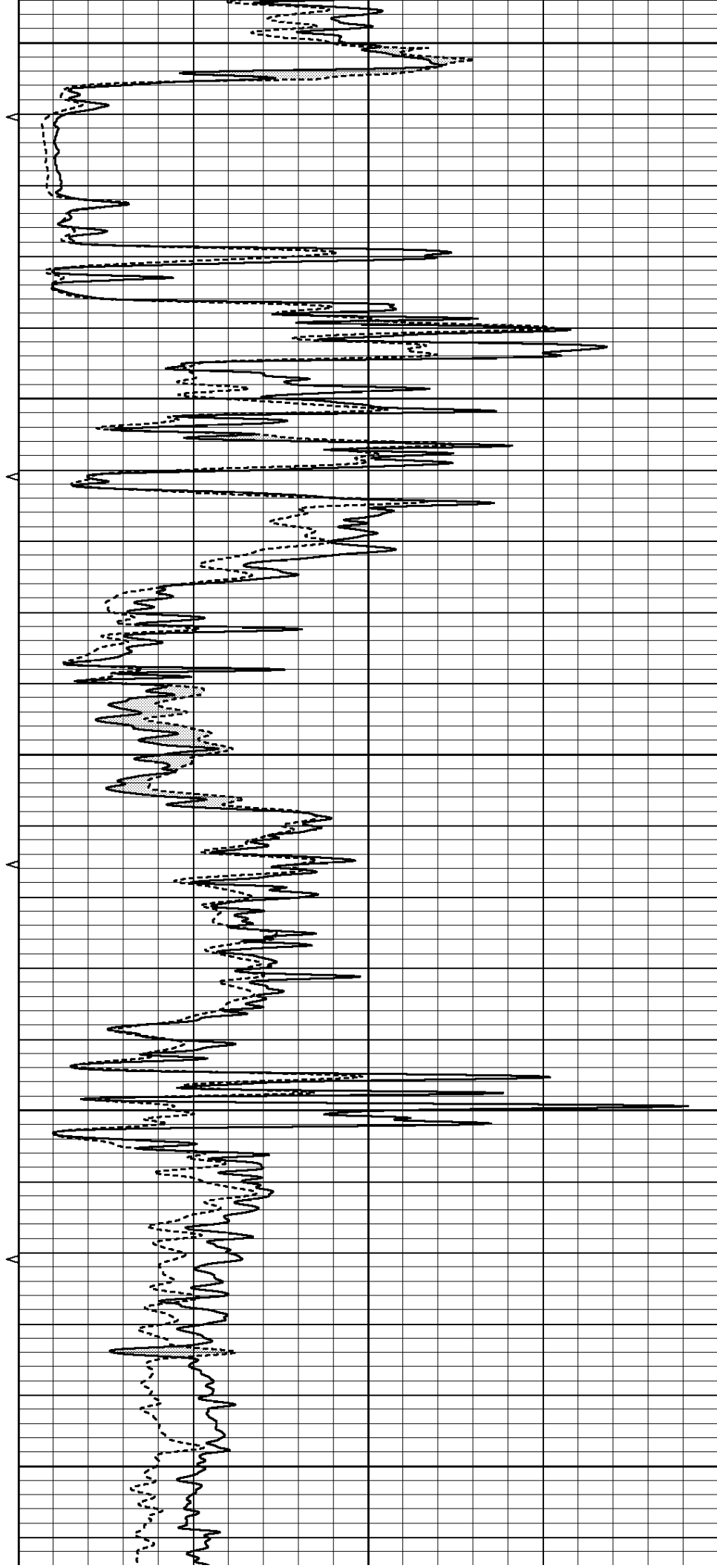
4000

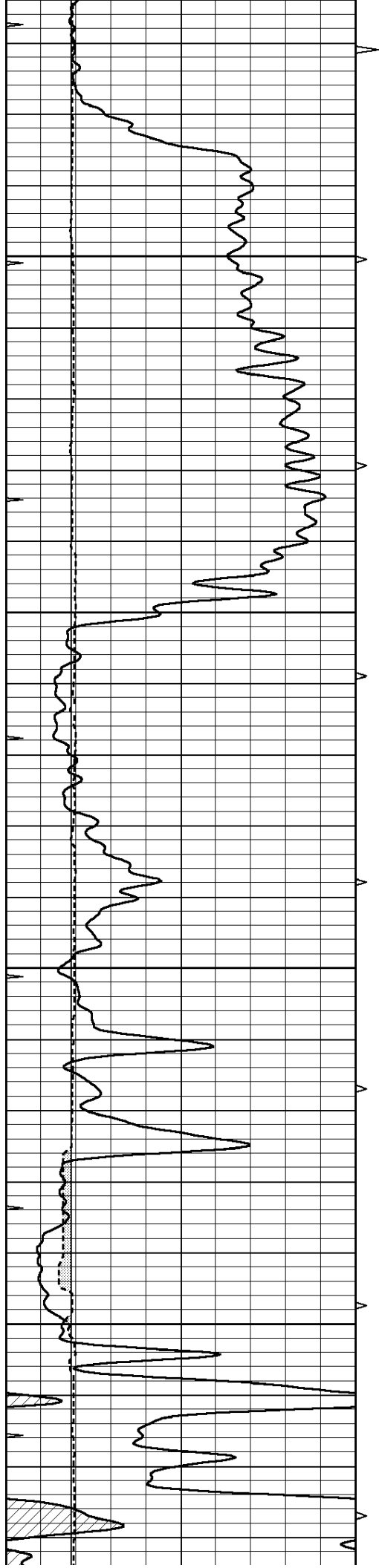
4050

4100

4150

4200



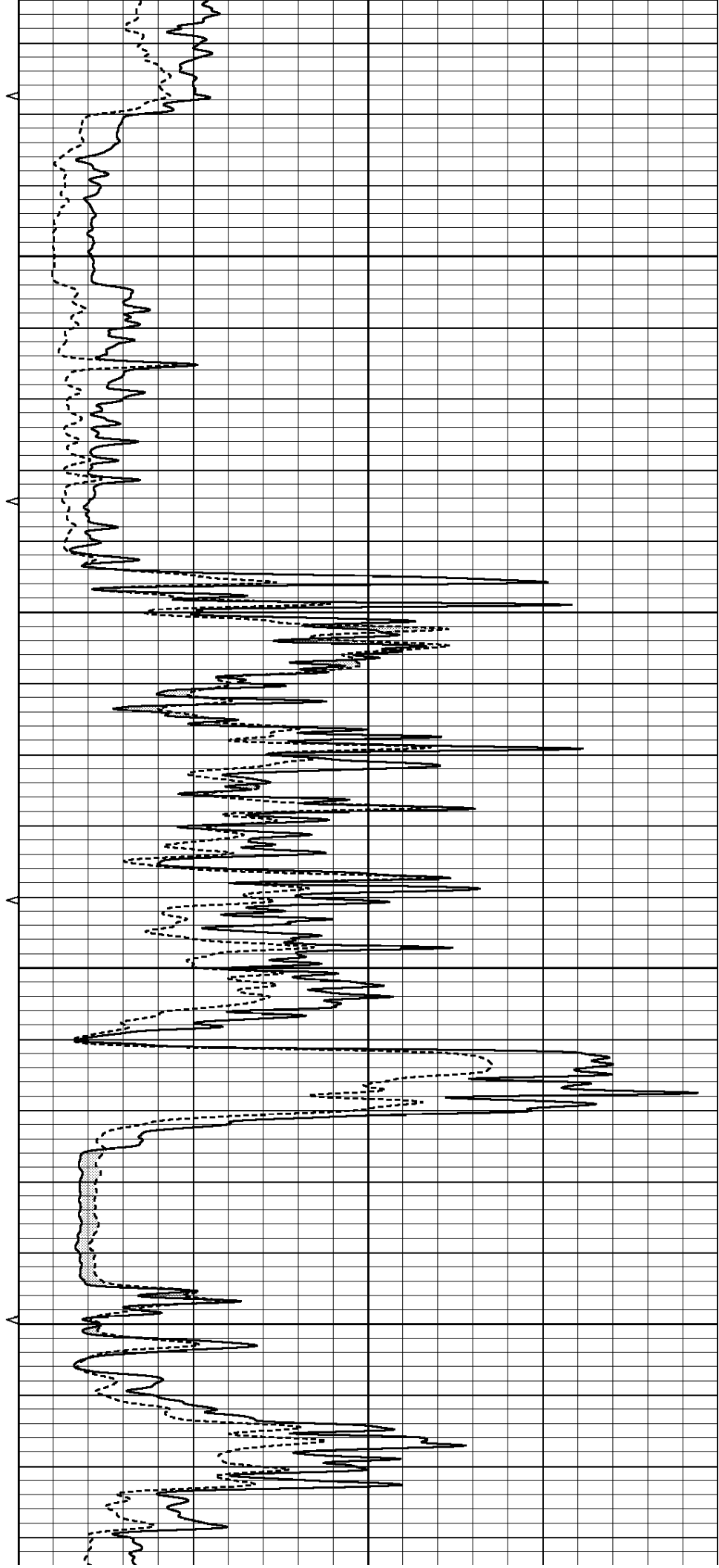


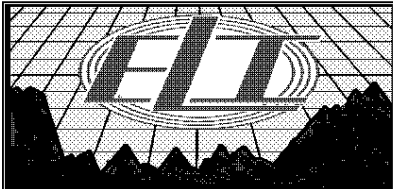
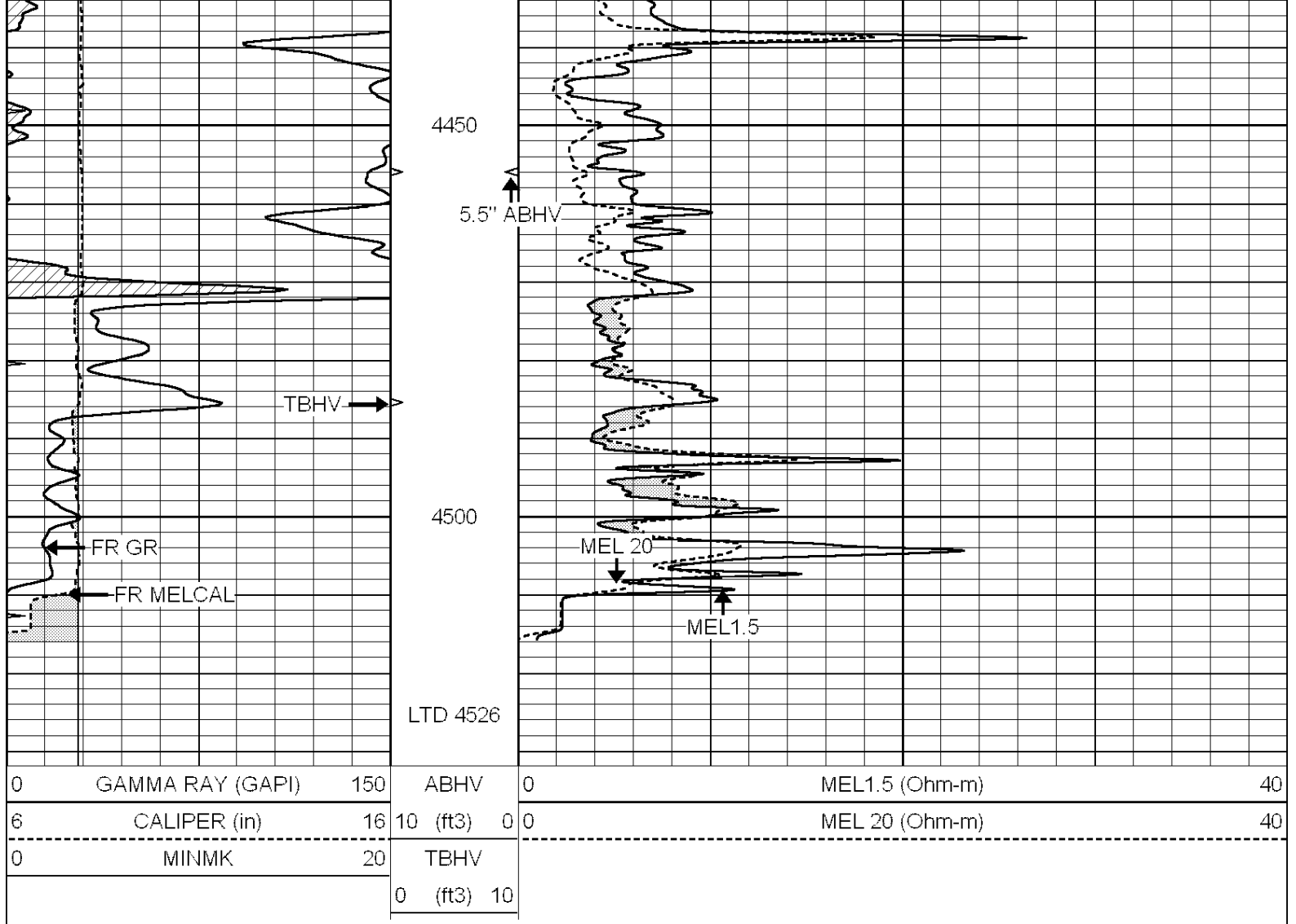
4250

4300

4350

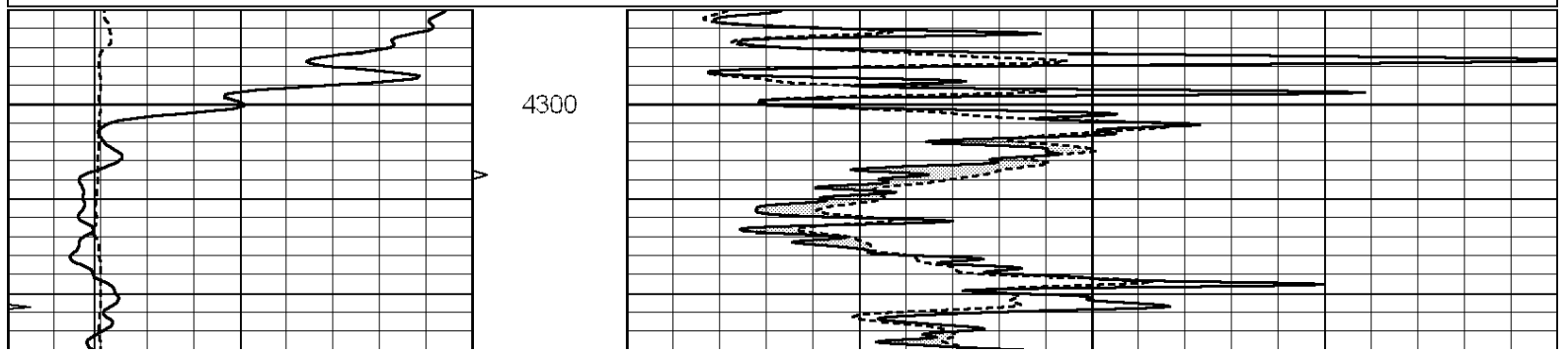
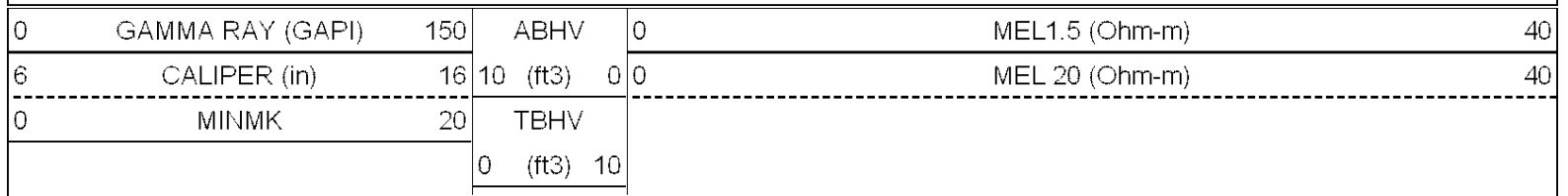
4400

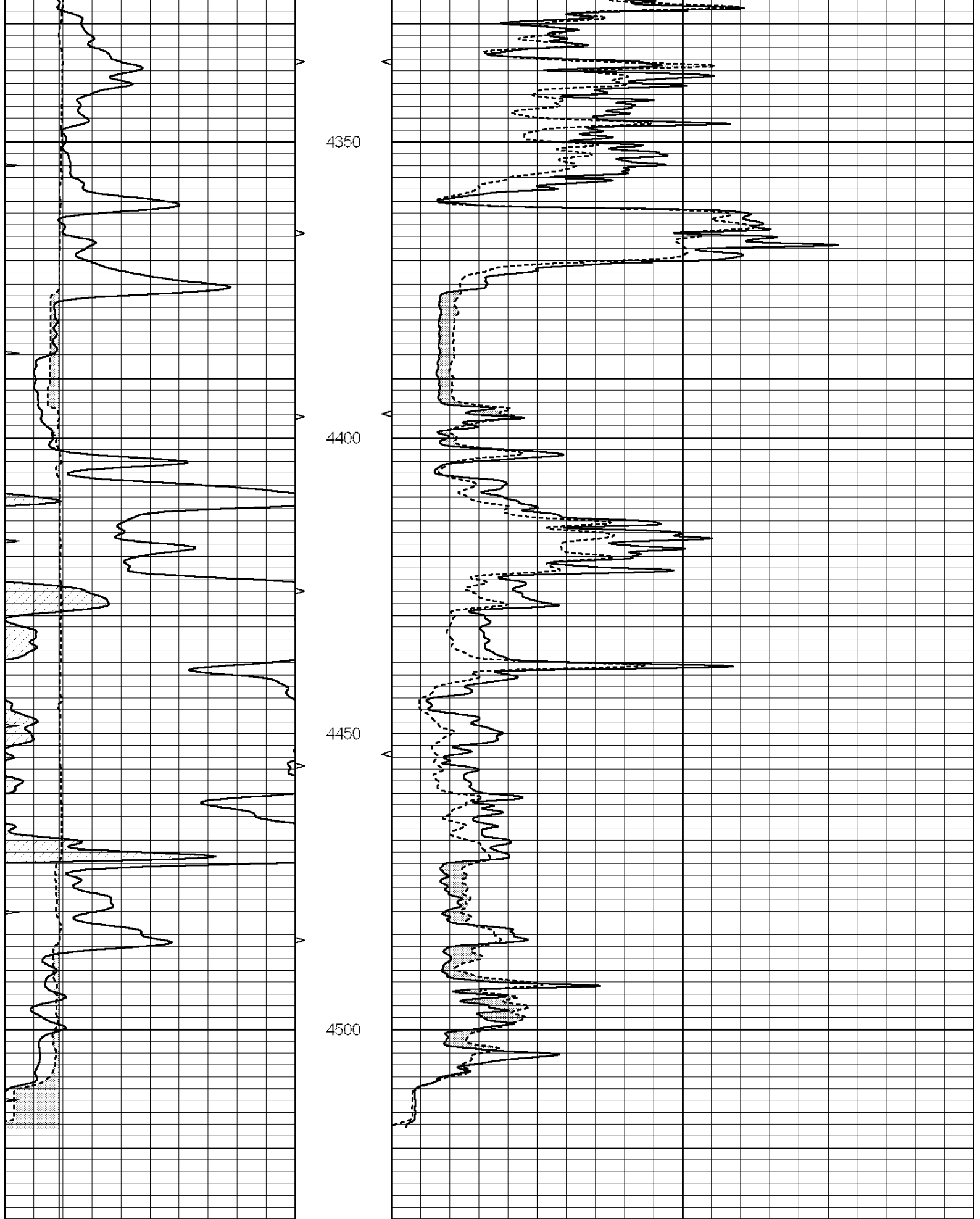




# REPEAT SECTION

Database File: 2651pe.db  
 Dataset Pathname: pass5.1  
 Presentation Format: micro  
 Dataset Creation: Tue Jun 12 03:45:38 2018 by Calc SOC 120430  
 Charted by: Depth in Feet scaled 1:240





0	GAMMA RAY (GAPI)	150	ABHV	0	MEL1.5 (Ohm-m)	40
6	CALIPER (in)	16	10 (ft3)	0 0	MEL 20 (Ohm-m)	40
0	MINMK	20	TBHV			

## Calibration Report

Database File: 2651pe.db  
 Dataset Pathname: pass6.4  
 Dataset Creation: Tue Jun 12 05:27:11 2018 by Calc SOC 120430

## MICRO Calibration Report

Serial Number: 070911  
 Tool Model: ProbeN  
 Performed: Tue Jun 05 07:01:36 2018

Caliper Calibration:	Gain=3.882	Offset=2.471
	Low Cal	High Cal
References	8.100	18.000
Readings	1.450	4.000

1.5" Calibration:	Gain=26.000	Offset=1.000
	Low Cal	High Cal
References	0.000	20.000
Readings	0.001	1.240

2" Calibration:	Gain=44.000	Offset=0.000
	Low Cal	High Cal
References	0.000	20.000
Readings	0.001	1.076

## Gamma Ray Calibration Report

Serial Number: 110959  
 Tool Model: OPEN\_GR  
 Performed: Tue Jun 05 07:01:22 2018

Calibrator Value:	1.0	GAPI
Background Reading:	0.0	cps
Calibrator Reading:	1.0	cps
Sensitivity:	0.2200	GAPI/cps