



**COMPENSATED
DENSITY / NEUTRON
PE LOG**

Company	SIROKY OIL MANAGEMENT	Company	SIROKY OIL MANAGEMENT
Well	GREEN GROUP #1-24	Well	GREEN GROUP #1-24
Field	WILDCAT	Field	WILDCAT
County	PRATT	County	PRATT
State	KANSAS	State	KANSAS
Location:	SEC 24 TWP 27S RGE 12W GROUND LEVEL Elevation 1797 KELLY BUSHING 12' A.G.L. KELLY BUSHING API # : 15-151-22471-0000 926' FSL & 569' FWL SE - NW - SW - SW	Other Services DIL/MEL SONIC	Elevation K.B. 1809 D.F. 1807 G.L. 1797

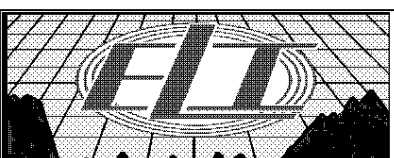
Date	6/12/18
Run Number	ONE
Depth Driller	4525
Depth Logger	4526
Bottom Logged Interval	4502
Top Log Interval	2500
Casing Driller	10 3/4" @ 322'
Casing Logger	322
Bit Size	7 7/8"
Type Fluid in Hole	CHEMICAL MUD
Density / Viscosity	9.1/53
pH / Fluid Loss	10.5/12.4
Source of Sample	FLOWLINE
Rim @ Meas. Temp	.400 @ 90F
Rmf @ Meas. Temp	.300 @ 90F
Rmc @ Meas. Temp	.480 @ 90F
Source of Rmf / Rmc	MEASUREMENT
Rim @ BHT	.298 @ 121F
Time Circulation Stopped	2.5 HOURS
Time Logger on Bottom	1:15 A.M.
Maximum Recorded Temperature	121F
Equipment Number	922339
Location	HAYS, KANSAS
Recorded By	JEFF LUEBBERS
Witnessed By	RYAN DAVIS

<<< Fold Here >>>

All interpretations are opinions based on inferences from electrical or other measurements and we cannot and do not guarantee the accuracy or correctness of any interpretation, and we shall not, except in the case of gross or willful negligence on our part, be liable or responsible for any loss, costs, damages, or expenses incurred or sustained by anyone resulting from any interpretation made by any of our officers, agents or employees. These interpretations are also subject to our general terms and conditions set out in our current Price Schedule.

Comments

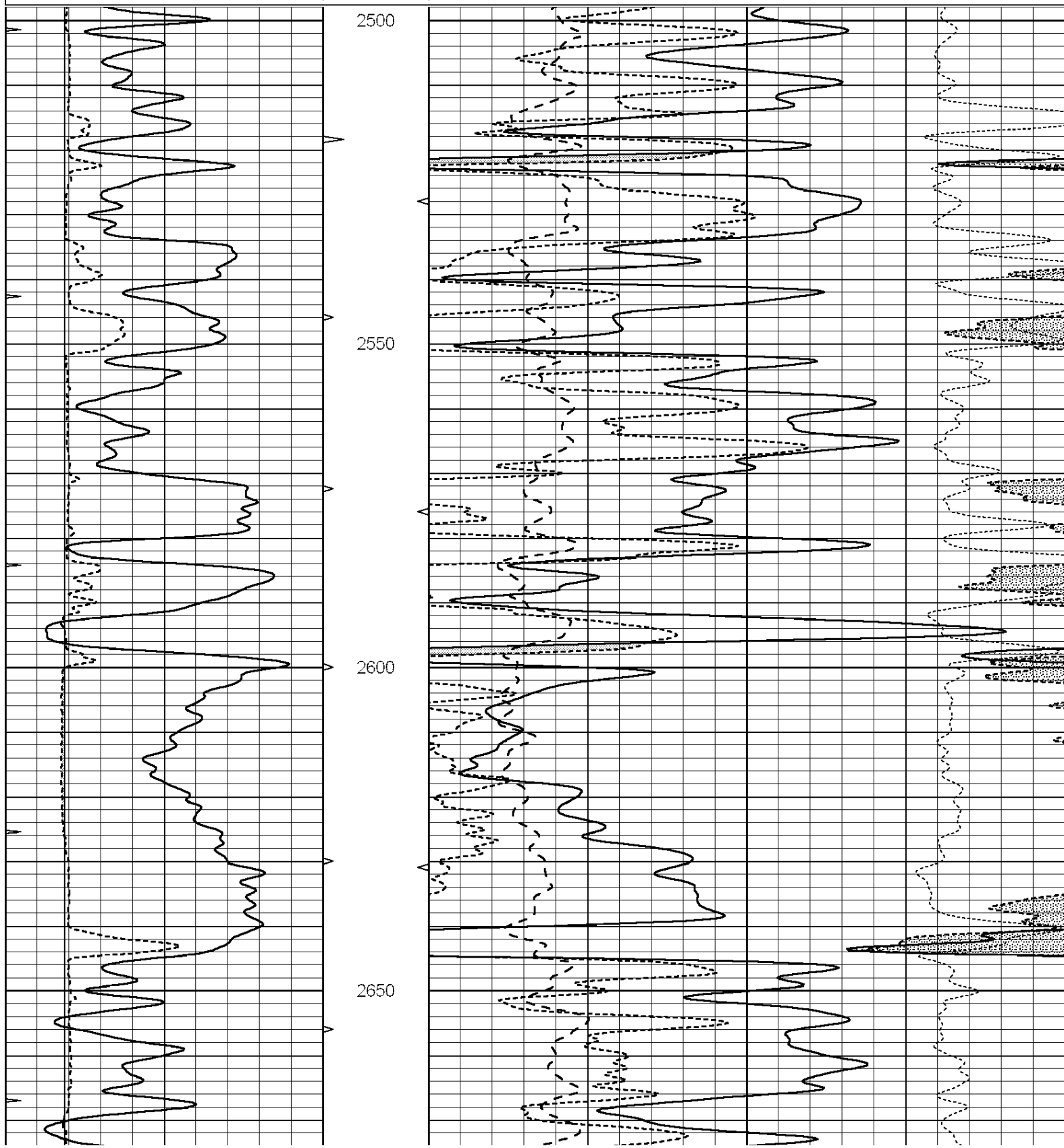
THANK YOU FOR USING ELI WIRELINE HAYS, KANSAS (785) 628-6395
DIRECTIONS
PRATT, KS., 5E. ON HWY 54 YO "60TH AVE.", N. ACROSS HWY TO ACCESS RD., 1E. TO "70TH AVE.",
3N., E. INTO AT GATE 1 1/4 MILE

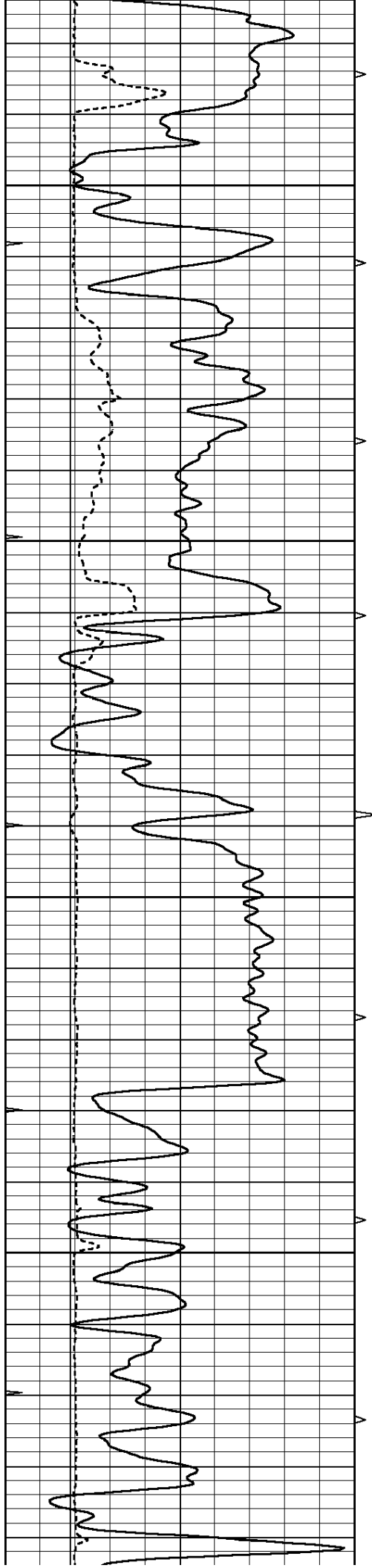


MAIN SECTION

Database File: 2651pe.db
 Dataset Pathname: pass3.7
 Presentation Format: ldt_neu
 Dataset Creation: Tue Jun 12 02:48:17 2018
 Charted by: Depth in Feet scaled 1:240

0	GAMMA RAY (GAPI)	150	ABHV	30	COMPENSATED DENSITY (pu)		-10
6	CALIPER (in)	16	10 (ft3)	0	COMPENSATED NEUTRON (pu)		-10
0	MINMK	20	TBHV	0	PE	10	-0.25 CORRECTION (g/cc) 0.25
			0 (ft3)	10			



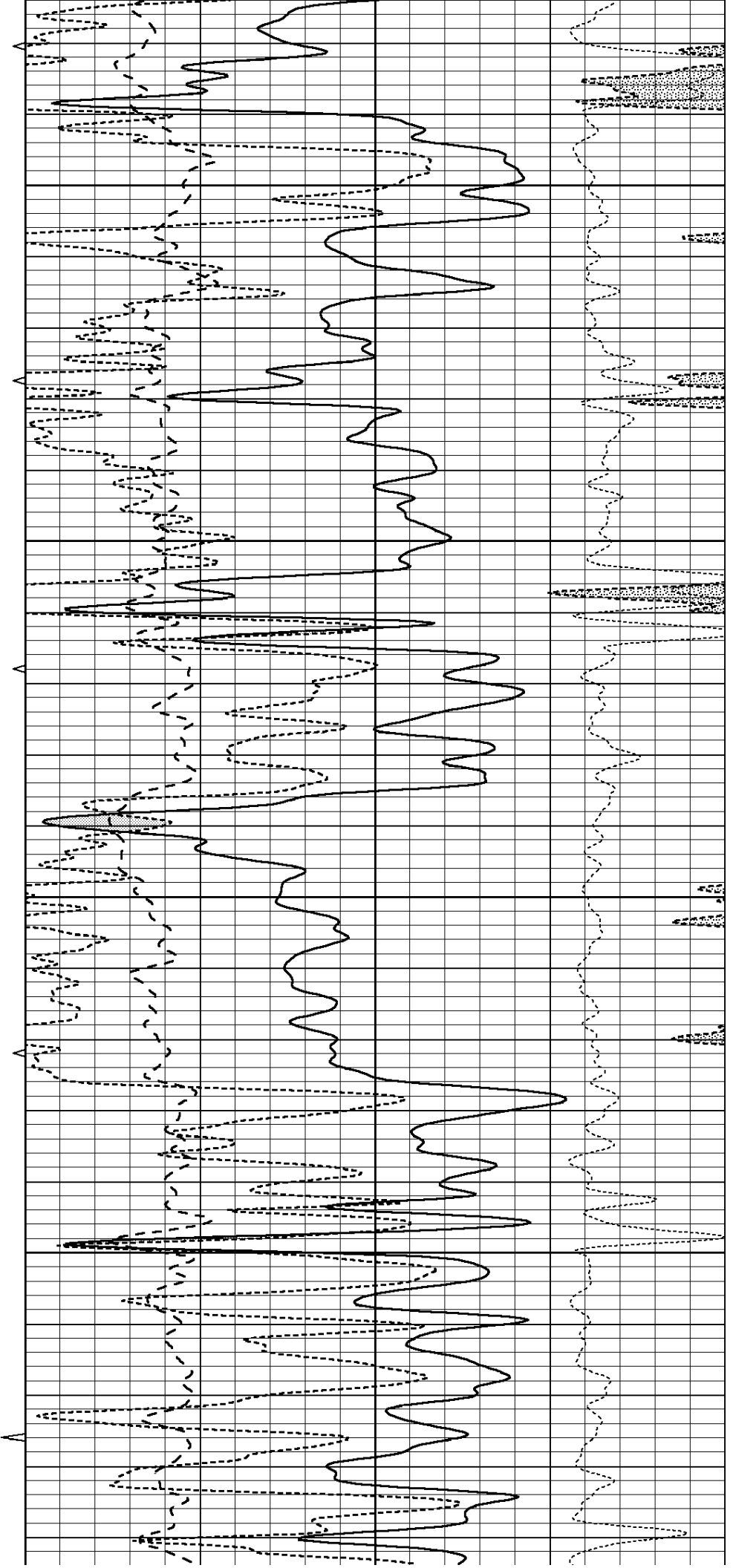


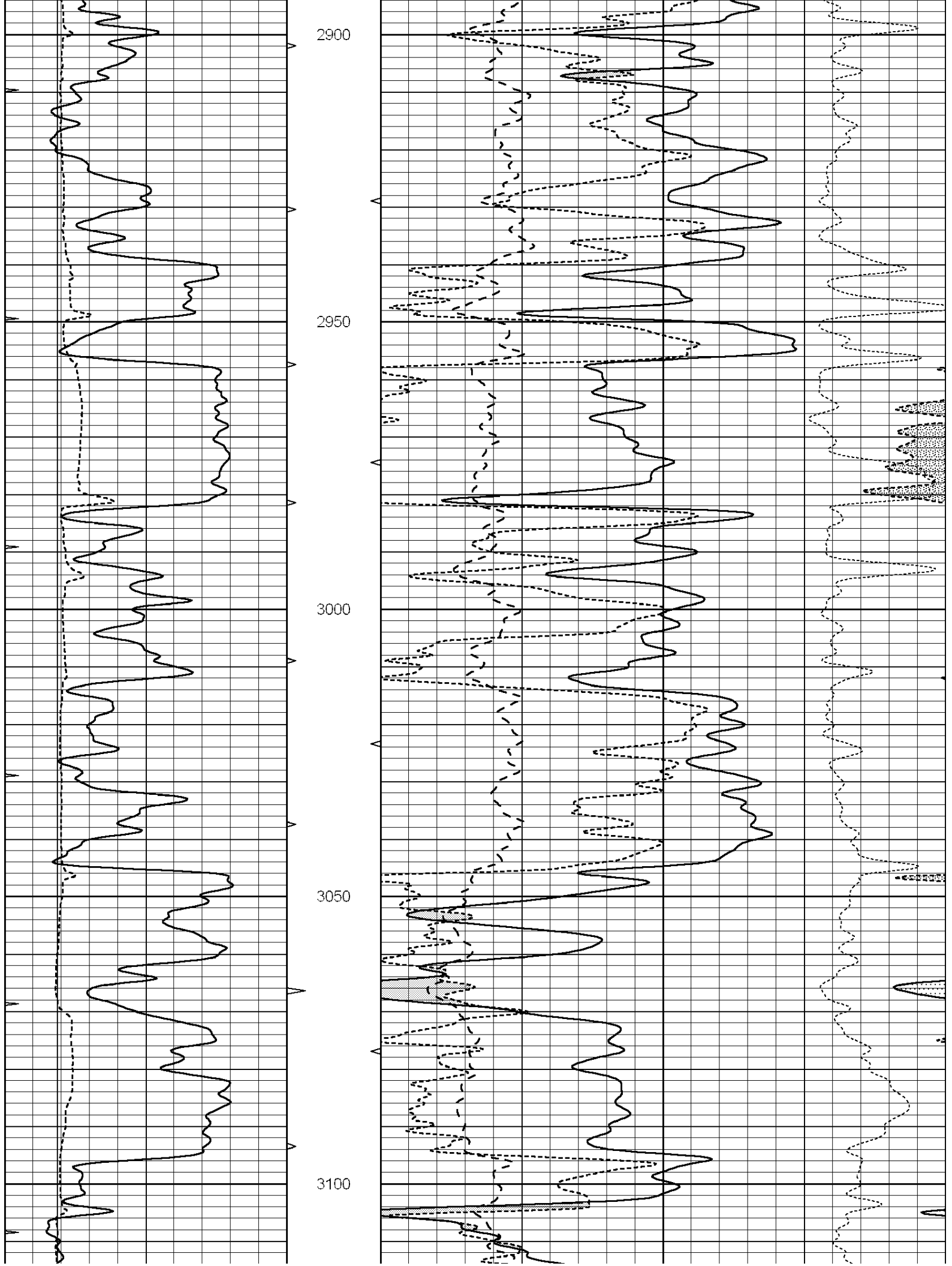
2700

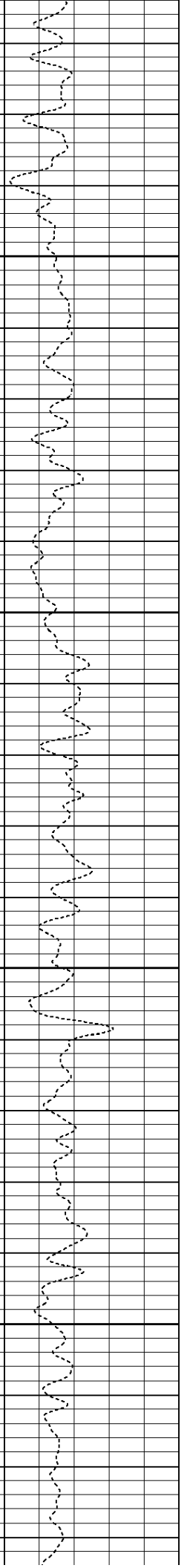
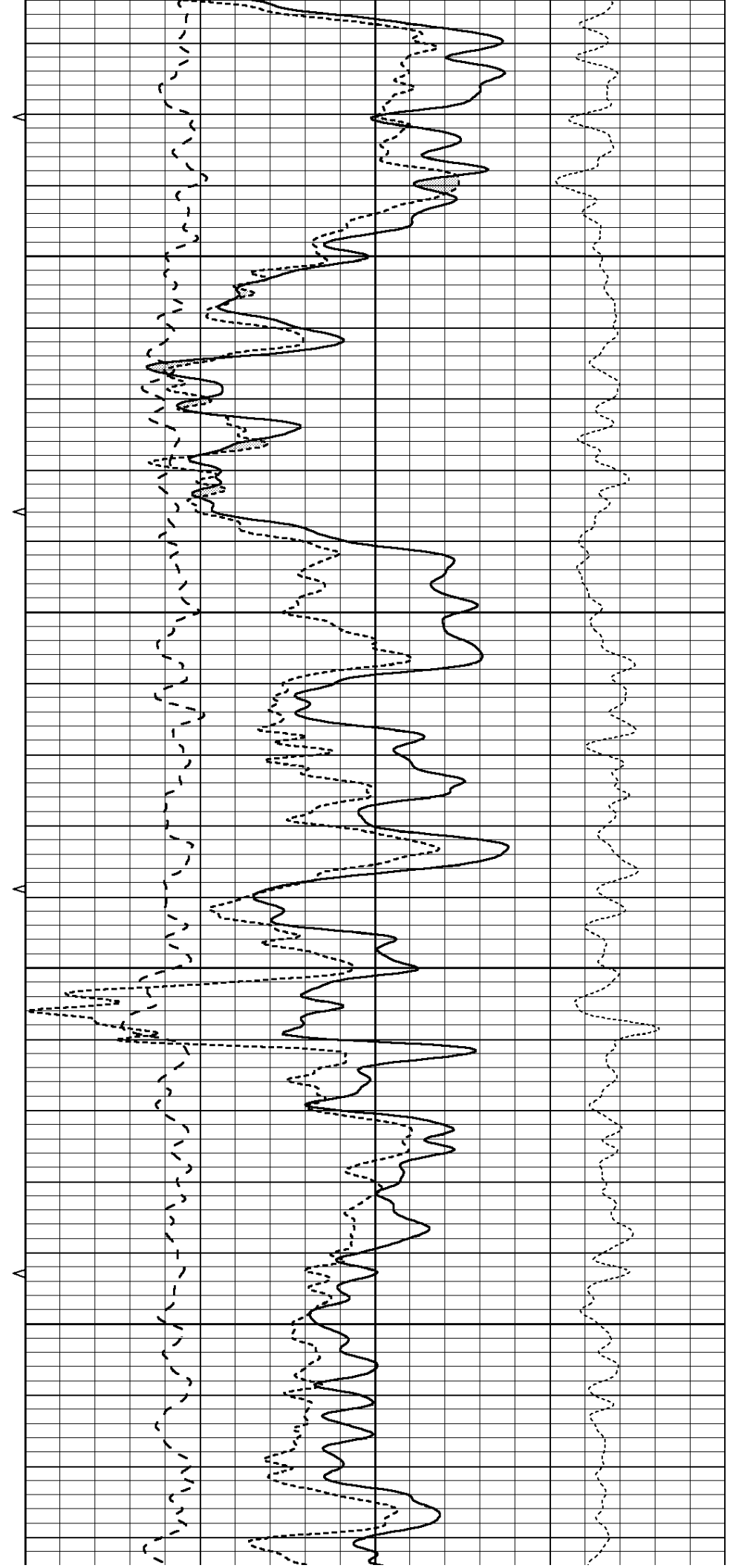
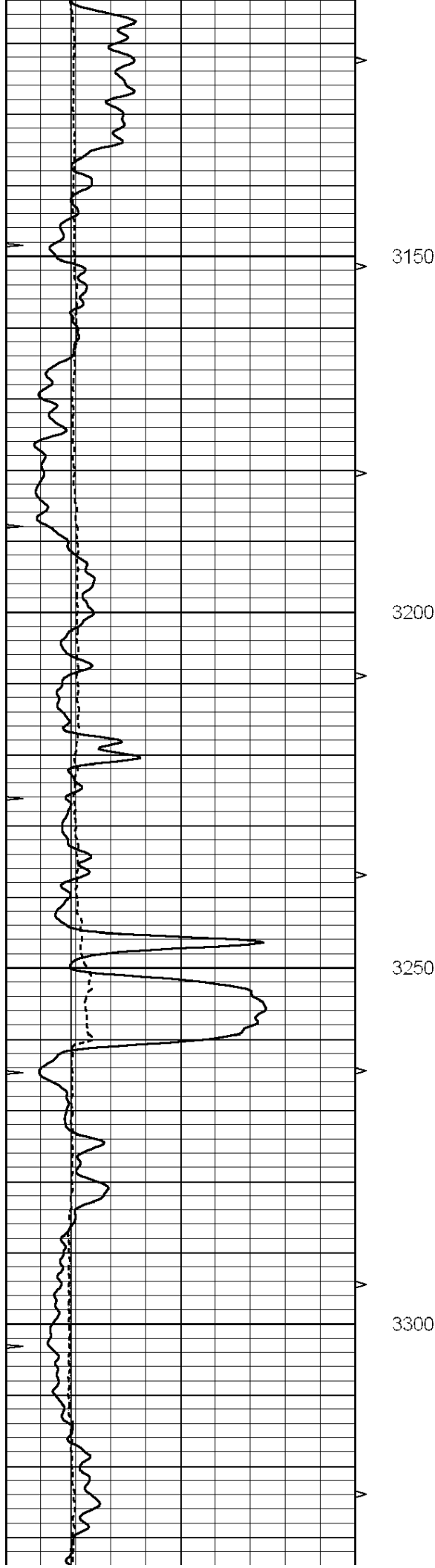
2750

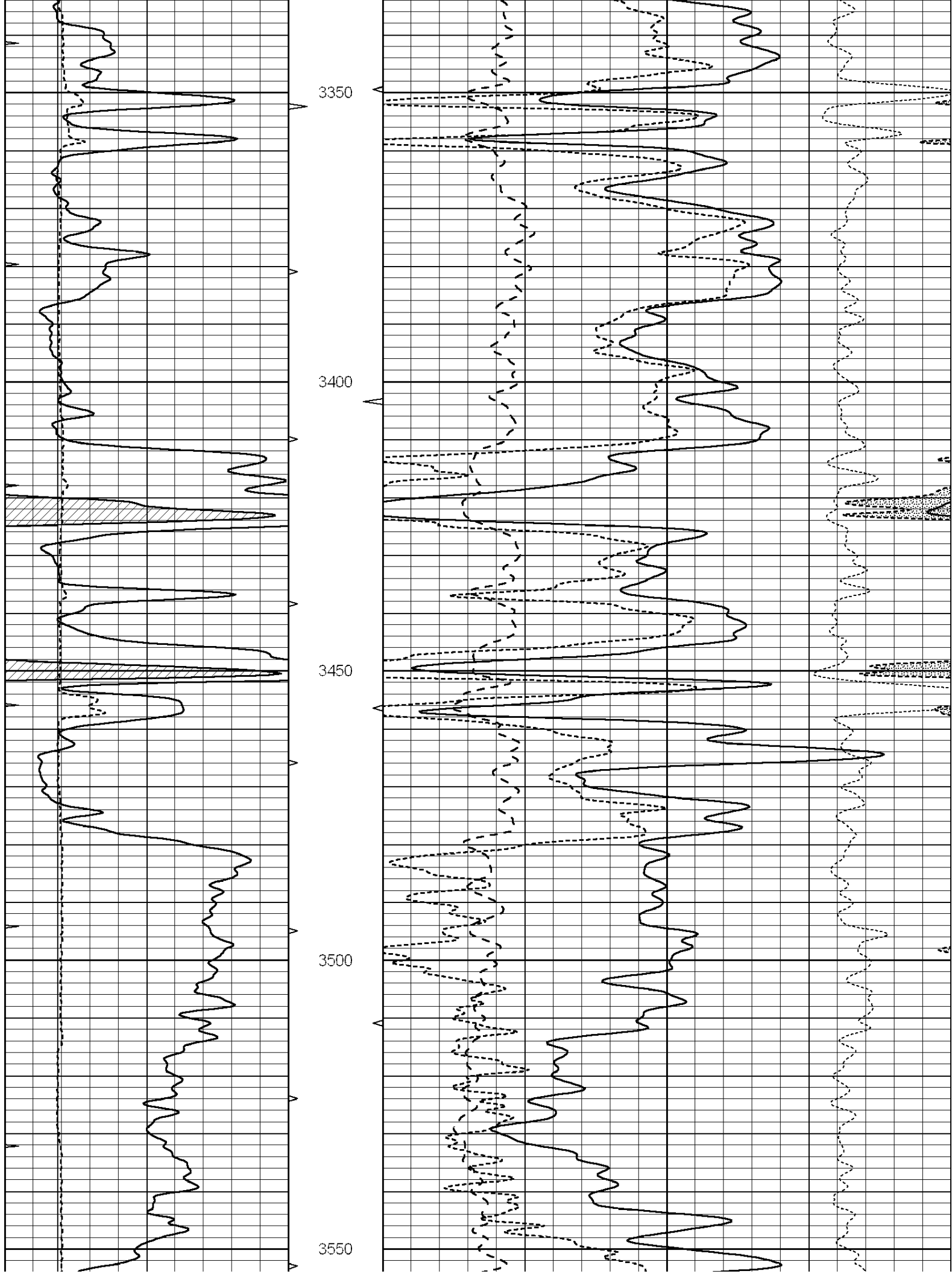
2800

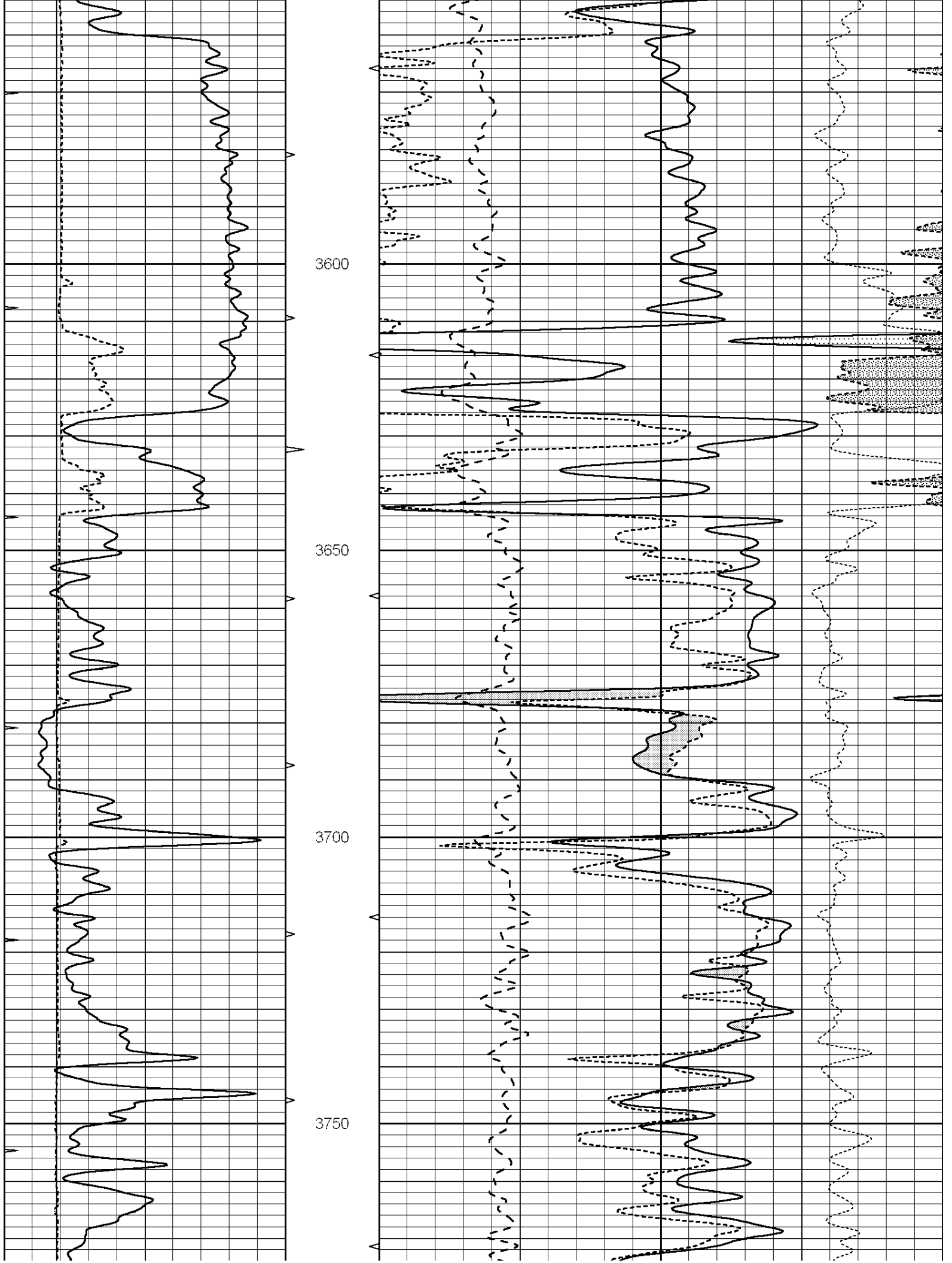
2850

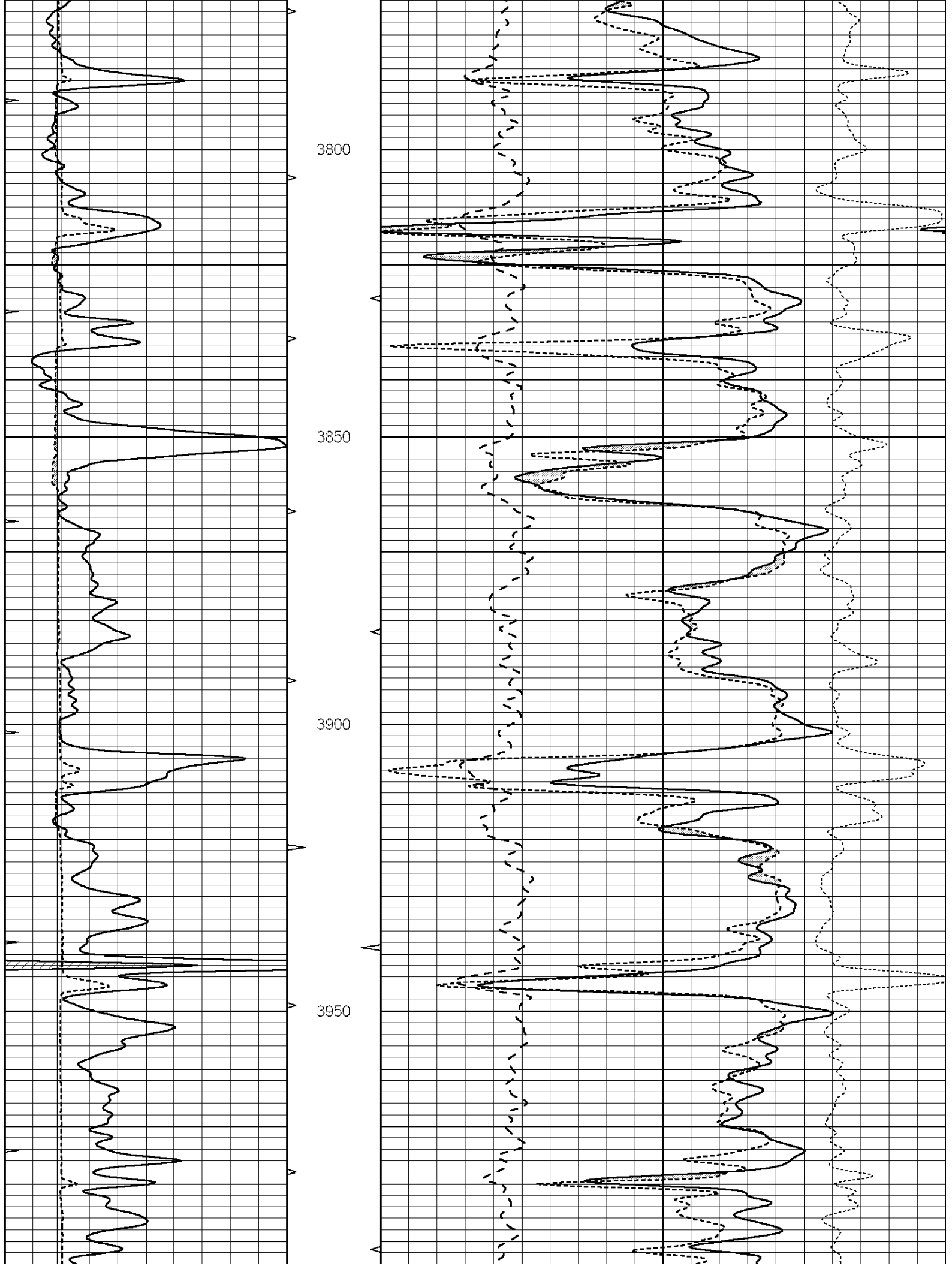


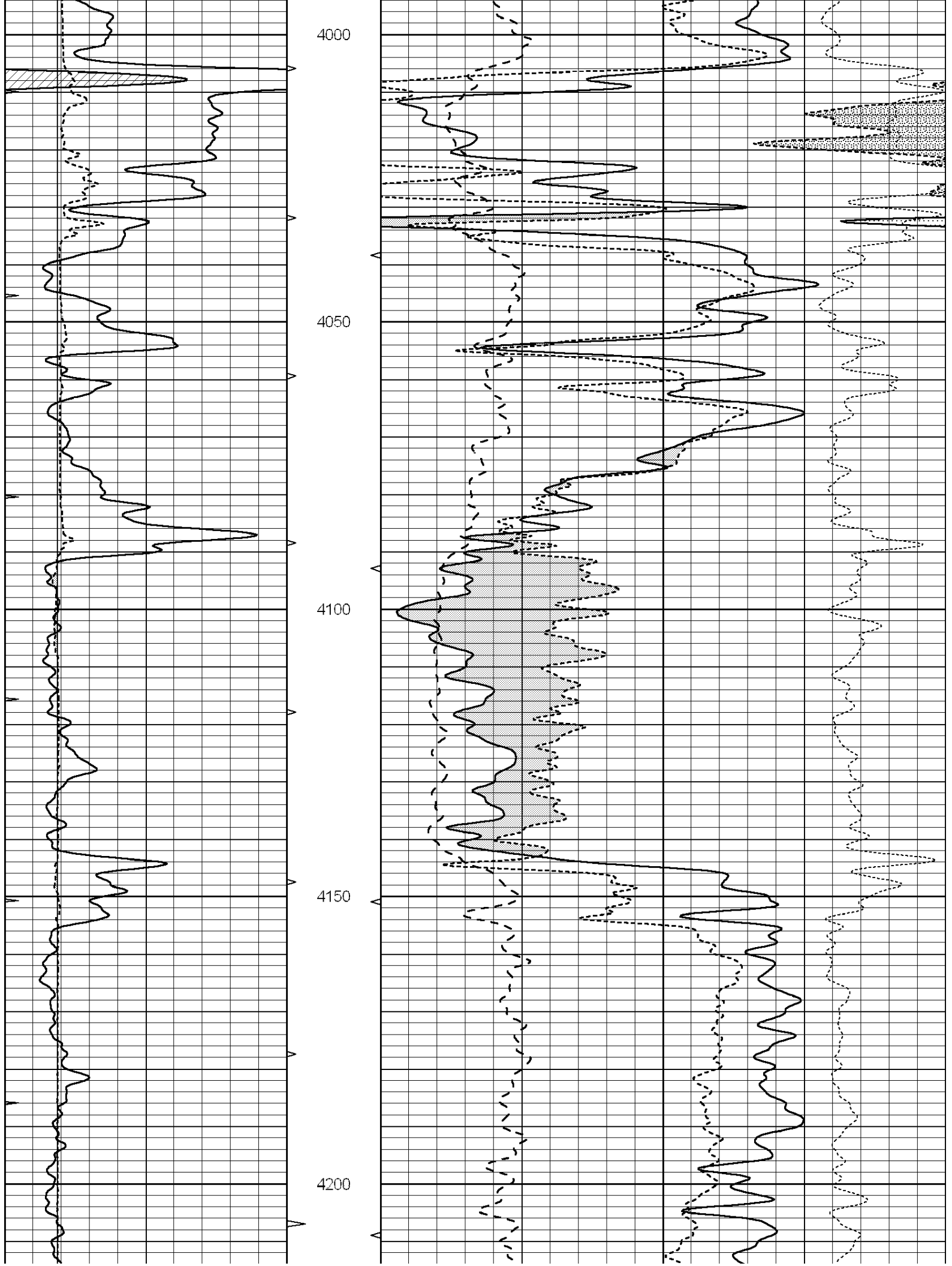


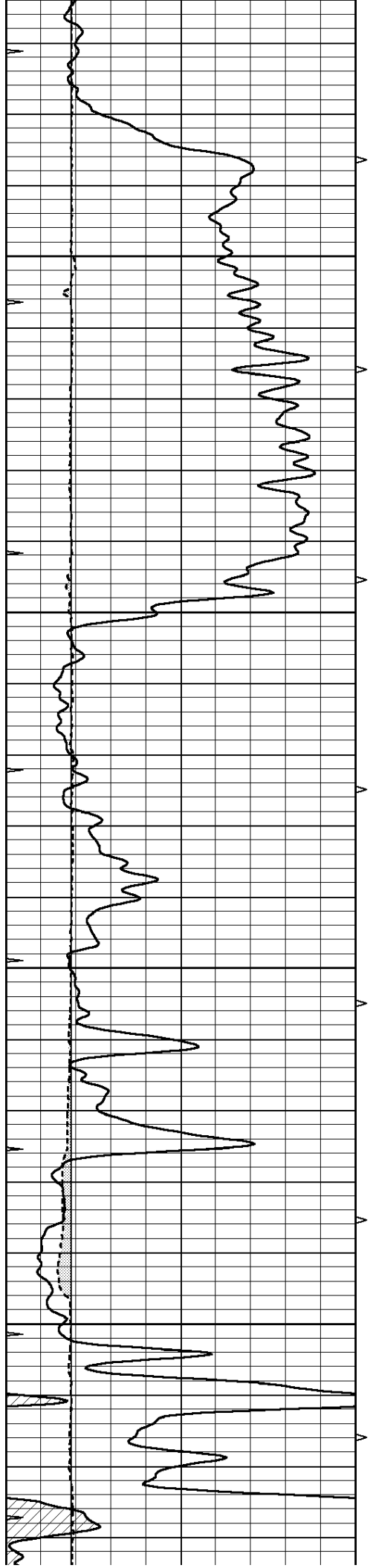










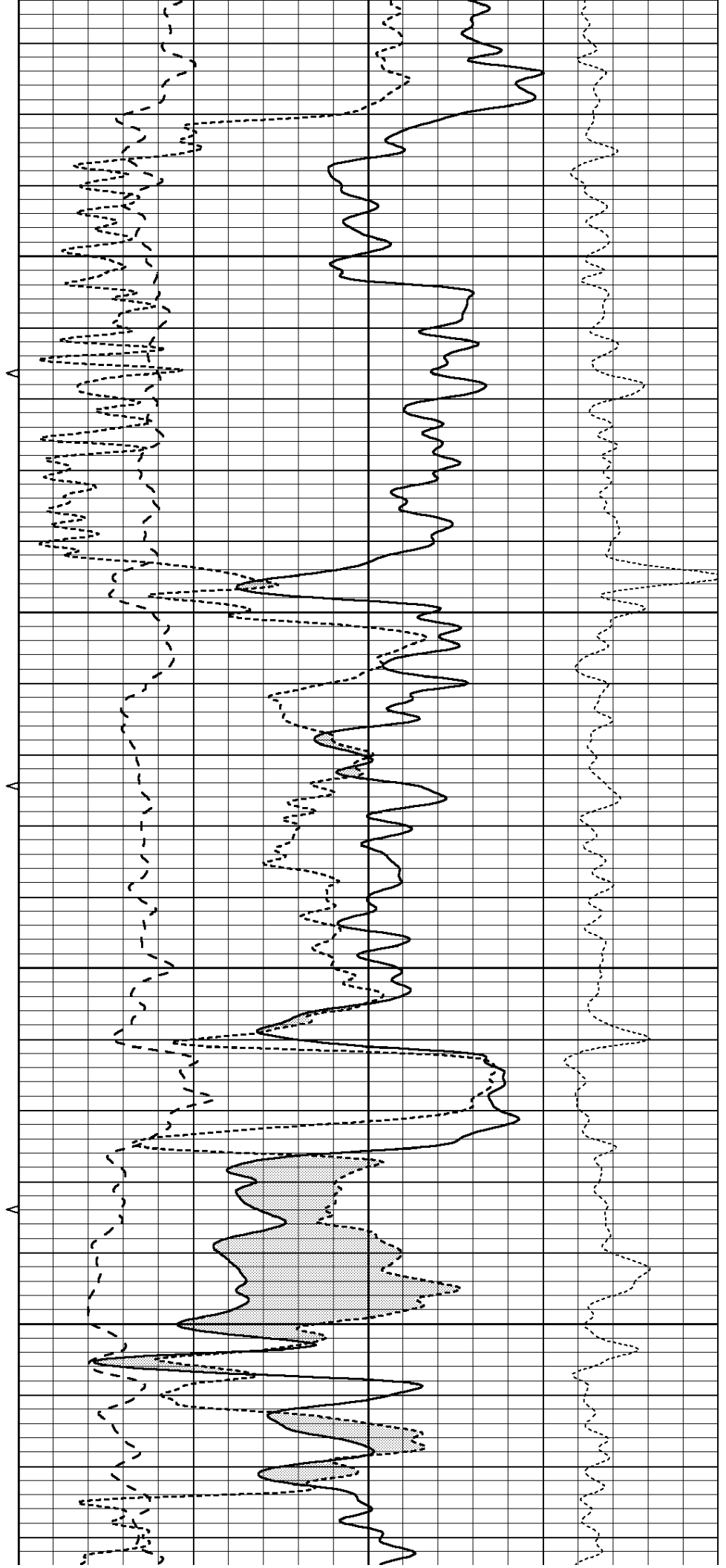


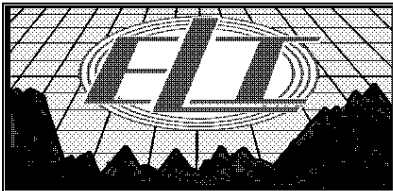
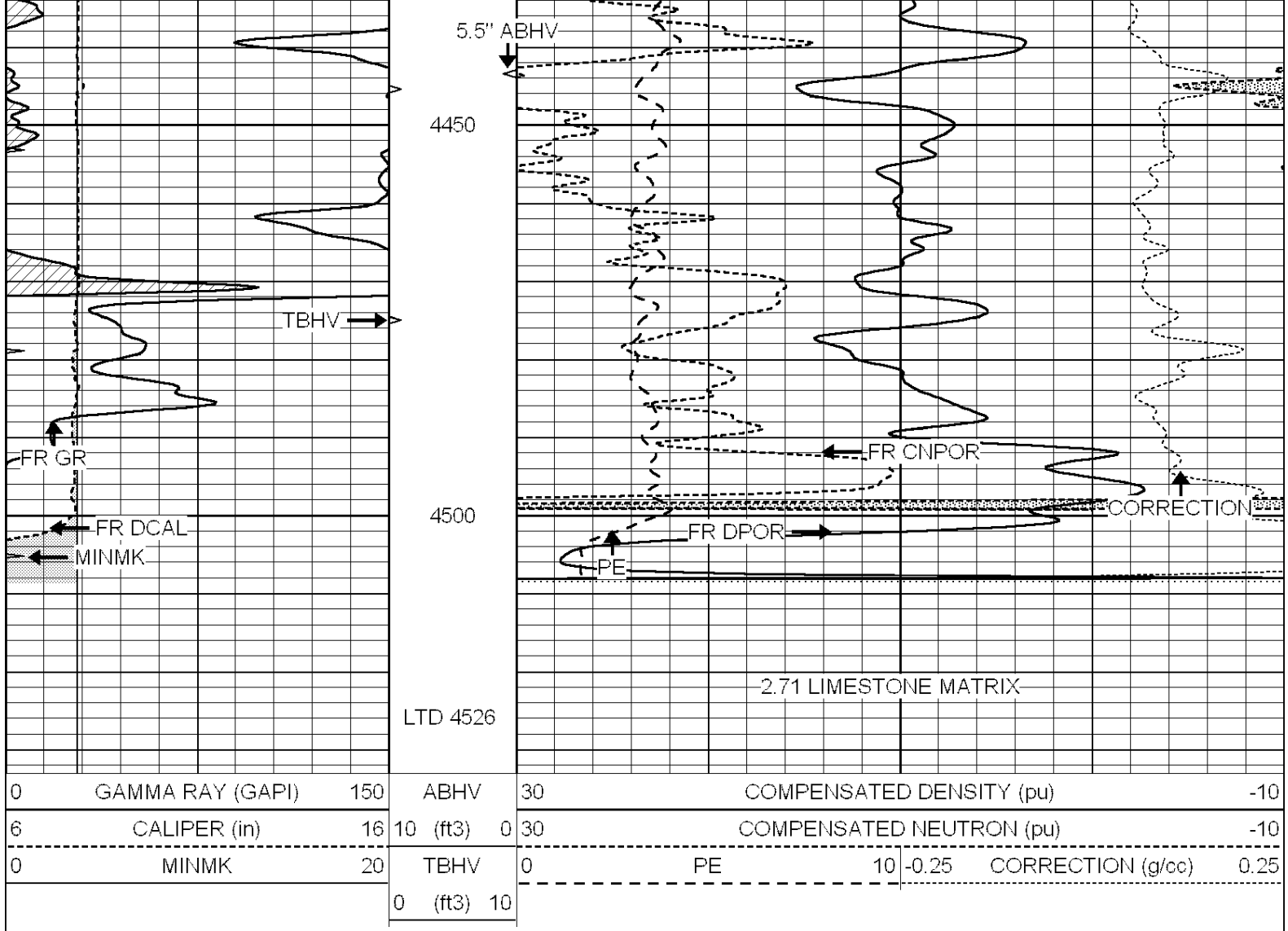
4250

4300

4350

4400

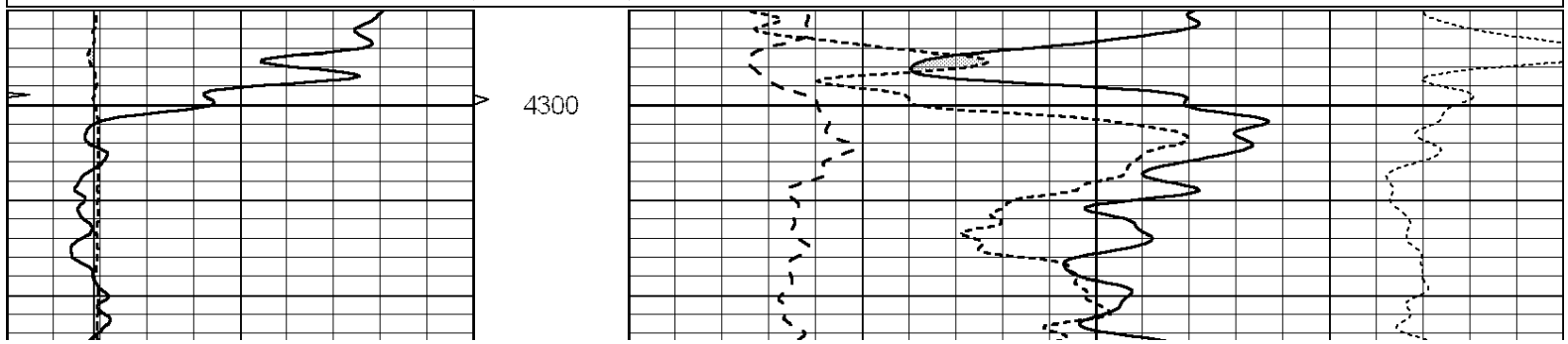


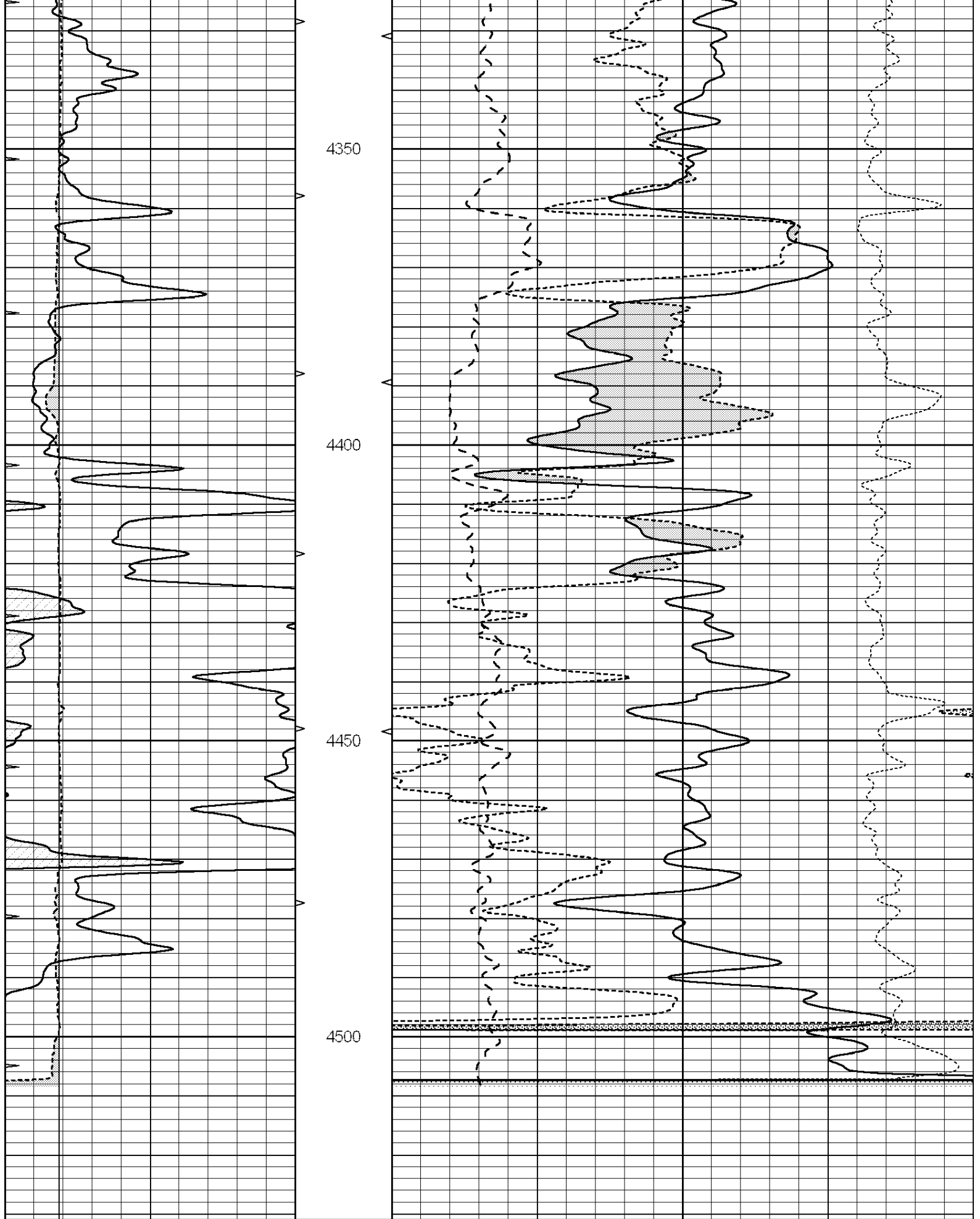


REPEAT SECTION

Database File: 2651pe.db
 Dataset Pathname: pass2.4
 Presentation Format: ldt_neu
 Dataset Creation: Tue Jun 12 02:27:53 2018 by Calc SOC 120430
 Charted by: Depth in Feet scaled 1:240

0	GAMMA RAY (GAPI)	150	ABHV	30	COMPENSATED DENSITY (pu)	-10			
6	CALIPER (in)	16	10 (ft3)	0	30	COMPENSATED NEUTRON (pu)	-10		
0	MINMK	20	TBHV	0	PE	10	-0.25	CORRECTION (g/cc)	0.25
			0 (ft3)	10					





0	GAMMA RAY (GAPI)	150	ABHV	30	COMPENSATED DENSITY (pu)	-10
6	CALIPER (in)	16	10 (ft3)	0	COMPENSATED NEUTRON (pu)	-10
0	MINMK	20	TBHV	0	PE	10 -0.25
					CORRECTION (g/cc)	0.25

Calibration Report

Database File: 1598ddn.db
 Dataset Pathname: pass4
 Dataset Creation: Wed Aug 30 02:13:00 2017 by Log SOC 120430

Dual Induction Calibration Report

Serial-Model: PROBE7-DILG
 Surface Cal Performed: Wed Aug 30 00:06:33 2017
 Downhole Cal Performed: Mon Jul 28 12:02:56 2008
 After Survey Verification Performed: Mon Jul 28 12:02:56 2008

Surface Calibration

Loop:	Readings			References			Results	
	Air	Loop		Air	Loop		m	b
Deep	-0.014	0.629	V	0.000	400.000	mmho/m	620.000	0.000
Medium	0.039	0.728	V	0.000	464.000	mmho/m	675.000	-44.000
Internal:	Zero	Cal		Zero	Cal		m	b
Deep	0.011	0.610	V	0.000	400.000	mmho/m	667.135	-7.256
Medium	0.005	0.712	V	0.000	464.000	mmho/m	655.677	-3.102

Downhole Calibration

	Readings			References			Results	
	Zero	Cal		Zero	Cal		m'	b'
Deep	0.000	0.000	mmho/m	14.508	388.384	mmho/m	1.000	0.000
Medium	0.000	0.000	mmho/m	166.367	504.400	mmho/m	1.000	0.000
LL3		7.500	V		1400.000	Ohm-m		
		0.000	V		20.000	Ohm-m		
		-7.200	V		4000.000	mmho-m		

After Survey Verification

	Readings			Targets			Results	
	Zero	Cal		Zero	Cal		m'	b'
Deep	0.000	0.000	mmho/m	0.000	0.000	mmho/m	0.000	0.000
Medium	0.000	0.000	mmho/m	0.000	0.000	mmho/m	0.000	0.000
LL3		1.000	Ohm-m		1.000	Ohm-m		
		0.000	Ohm-m		0.000	Ohm-m		
		1.000	mmho-m		1.000	mmho-m		

Litho Density Calibration Report

Serial: 002 Model: PRB

Master Calibration

Performed Mon Aug 21 11:27:42 2017

	Background	Magnesium	Aluminum	Sandstone	
Window 1	837.1	10632.5	2945.1	12110.1	cps
Window 2	772.0	9117.4	2570.1	10197.3	cps
Window 3	631.7	4669.0	1481.9	5042.9	cps
Window 4	187.0	187.5	185.9	189.9	cps
Long Space	0.0	8345.4	1798.1	9425.3	cps
Short Space	1.1	1927.9	1285.9	2050.2	cps
Rho		1.7100	2.5960	1.3800	g/cc
Pe		0.0000	2.5700	1.5500	
Rib Angle	: 45.2	Rib Slope	: 1.008	Density/Spine Ratio	: 0.558
Spine Angle	: 75.2	Spine Slope	: 3.790	Spine Intercept	: -19.6

Before Survey Verification

Performed Wed Dec 31 18:00:00 1969

Window 1	0.0	0.0	0.0	0.0	cps
Window 2	0.0	0.0	0.0	0.0	cps
Window 3	0.0	0.0	0.0	0.0	cps
Window 4	0.0	0.0	0.0	0.0	cps
Long Space	0.0	0.0	0.0	0.0	cps
Short Space	0.0	0.0	0.0	0.0	cps
Measured Rho		0.0000	0.0000	0.0000	g/cc
Measured Correction		0.0000	0.0000	0.0000	g/cc
Measured Pe			0.0000	0.0000	

After Survey Verification

Performed Wed Dec 31 18:00:00 1969

Window 1	0.0	0.0	0.0	0.0	cps
Window 2	0.0	0.0	0.0	0.0	cps
Window 3	0.0	0.0	0.0	0.0	cps
Window 4	0.0	0.0	0.0	0.0	cps
Long Space	0.0	0.0	0.0	0.0	cps
Short Space	0.0	0.0	0.0	0.0	cps
Measured Rho		0.0000	0.0000	0.0000	g/cc
Measured Correction		0.0000	0.0000	0.0000	g/cc
Measured Pe			0.0000	0.0000	

Compensated Neutron Calibration Report

Serial Number: 070808
 Tool Model: Probe

PRE-SURVEY VERIFICATION

Detector	Readings	Measured	Target
Short Space	cps		
Long Space	cps	pu	pu

POST-SURVEY VERIFICATION

Detector	Readings	Measured	Target
Short Space	cps		
Long Space	cps	pu	pu

Gamma Ray Calibration Report

Serial Number: 070558
 Tool Model: OPEN_GR
 Performed: Wed May 31 00:09:32 2017

Calibrator Value: 1.0 GAPI
 Background Reading: 0.0 cps
 Calibrator Reading: 1.0 cps
 Sensitivity: 0.2800 GAPI/cps