



DUAL INDUCTION LOG

Company SIROKY OIL MANAGEMENT
 Well GREEN GROUP #1-24
 Field WILDCAT
 County PRATT
 State KANSAS

Company SIROKY OIL MANAGEMENT
 Well GREEN GROUP #1-24
 Field WILDCAT
 County PRATT State KANSAS

Location: API # : 15-151-22471-0000
 926' FSL & 569' FWL
 SE - NW - SW - SW

Permanent Datum GROUND LEVEL Elevation 1797
 Log Measured From KELLY BUSHING 12' A.G.L.
 Drilling Measured From KELLY BUSHING

SEC 24 TWP 27S RGE 12W

Other Services
 CDL/CNL/PE
 MEL/SONIC

Elevation
 K.B. 1809
 D.F. 1807
 G.L. 1797

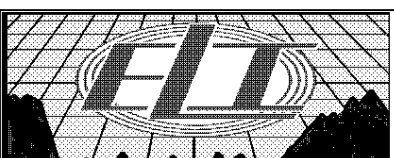
| | |
|------------------------------|----------------|
| Date | 6/12/18 |
| Run Number | ONE |
| Depth Driller | 4525 |
| Depth Logger | 4526 |
| Bottom Logged Interval | 4524 |
| Top Log Interval | 00 |
| Casing Driller | 10 3/4" @ 322' |
| Casing Logger | 322 |
| Bit Size | 7 7/8" |
| Type Fluid in Hole | CHEMICAL MUD |
| Density / Viscosity | 9.1/53 |
| pH / Fluid Loss | 10.5/12.4 |
| Source of Sample | FLOWLINE |
| Rim @ Meas. Temp | .400 @ 90F |
| Rmf @ Meas. Temp | .300 @ 90F |
| Rmc @ Meas. Temp | .480 @ 90F |
| Source of Rmf / Rmc | MEASUREMENT |
| Rim @ BHT | .298 @ 121F |
| Time Circulation Stopped | 2.5 HOURS |
| Time Logger on Bottom | 1:15 A.M. |
| Maximum Recorded Temperature | 121F |
| Equipment Number | 922339 |
| Location | HAYS, KANSAS |
| Recorded By | JEFF LUEBBERS |
| Witnessed By | RYAN DAVIS |

<<< Fold Here >>>

All interpretations are opinions based on inferences from electrical or other measurements and we cannot and do not guarantee the accuracy or correctness of any interpretation, and we shall not, except in the case of gross or willful negligence on our part, be liable or responsible for any loss, costs, damages, or expenses incurred or sustained by anyone resulting from any interpretation made by any of our officers, agents or employees. These interpretations are also subject to our general terms and conditions set out in our current Price Schedule.

Comments

THANK YOU FOR USING ELI WIRELINE HAYS, KANSAS (785) 628-6395
 DIRECTIONS
 PRATT, KS., 5E. ON HWY 54 YO "60TH AVE.", N. ACROSS HWY TO ACCESS RD., 1E. TO "70TH AVE.",
 3N., E. INTO AT GATE 1 1/4 MILE



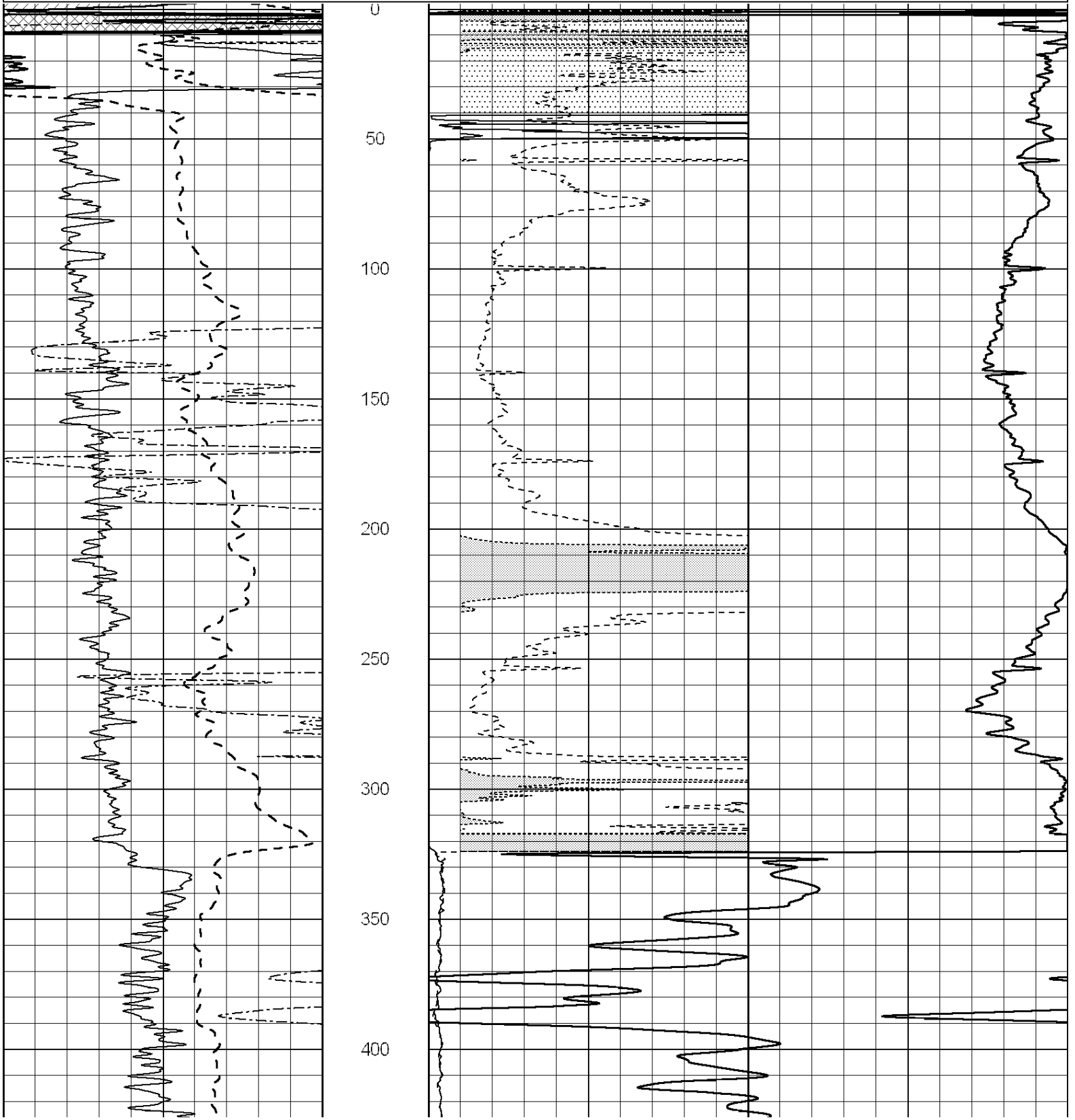
MAIN SECTION

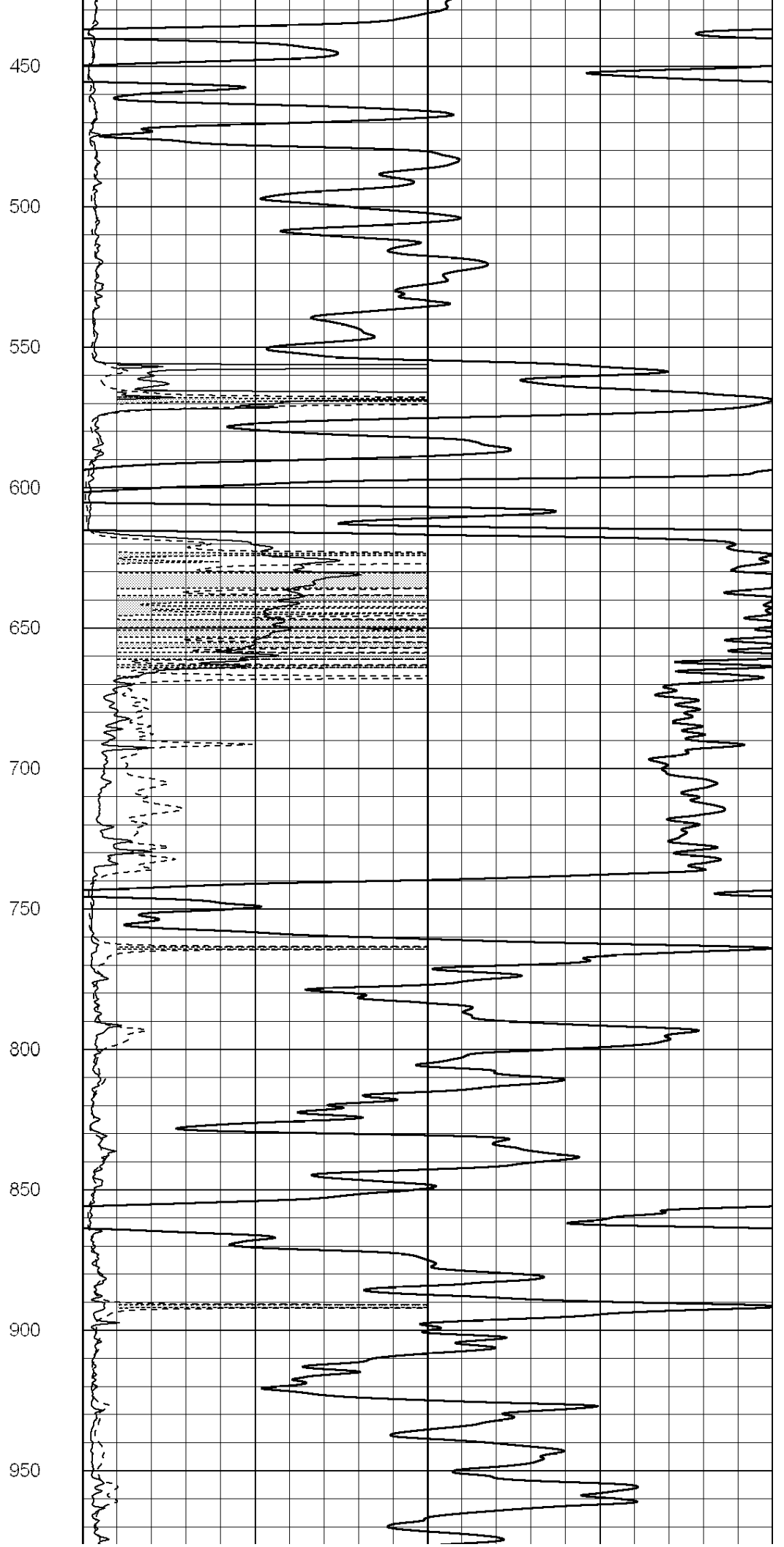
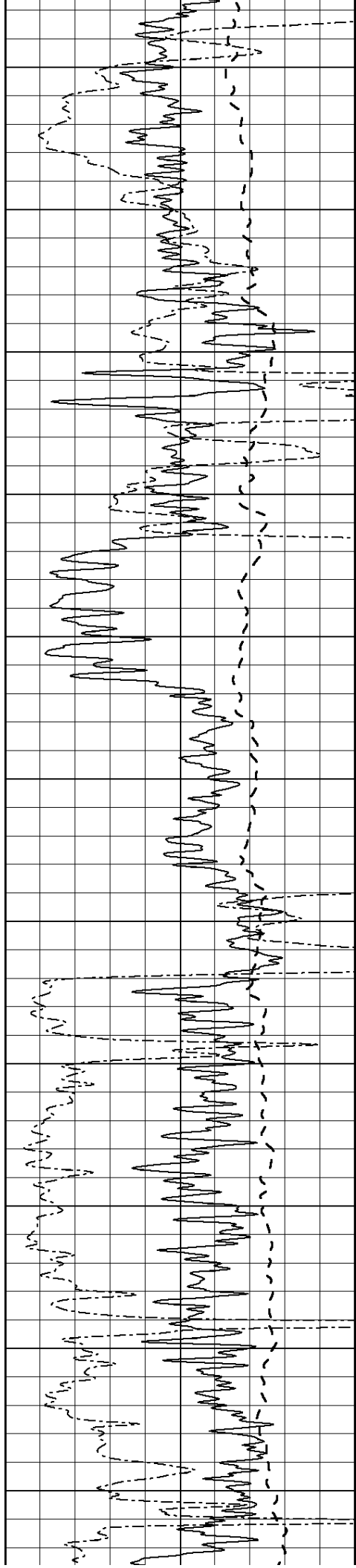
Database File: 2651pe.db
 Dataset Pathname: pass3.7
 Presentation Format: dil2
 Dataset Creation: Tue Jun 12 02:48:17 2018
 Charted by: Depth in Feet scaled 1:600

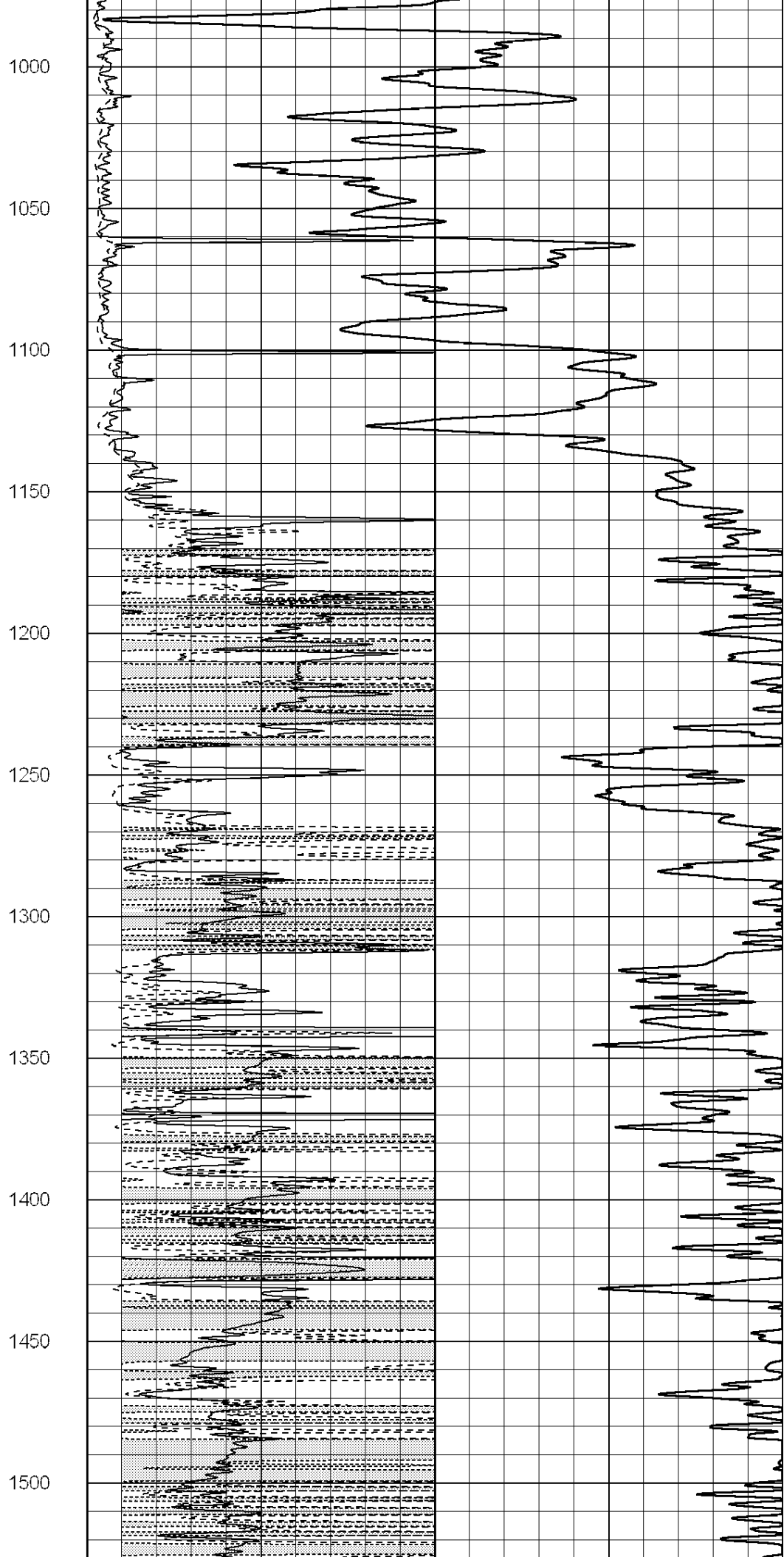
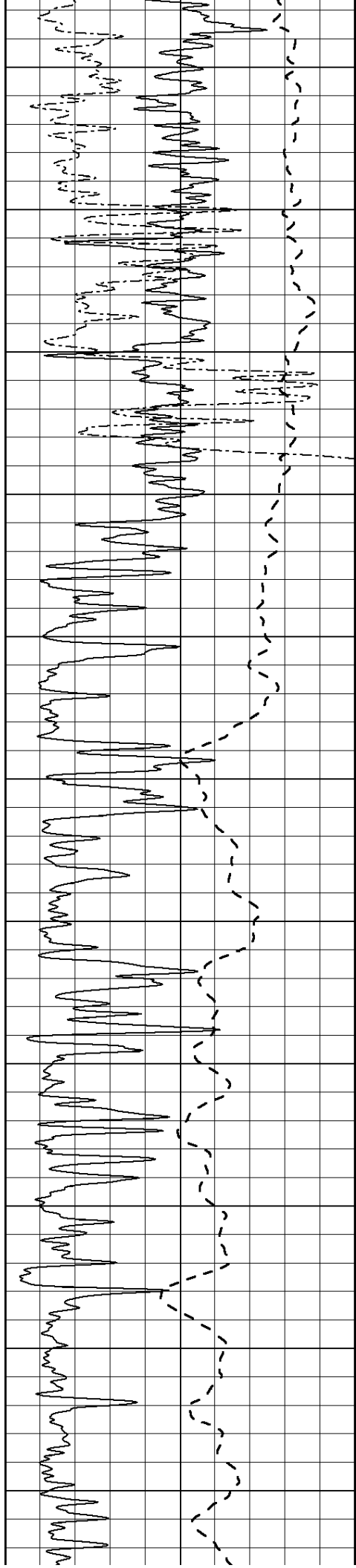
| | | |
|------|------------------|-----|
| 0 | Gamma Ray (GAPI) | 150 |
| -100 | SP (mV) | 100 |
| 0 | RWA (Ohm-m) | 1 |

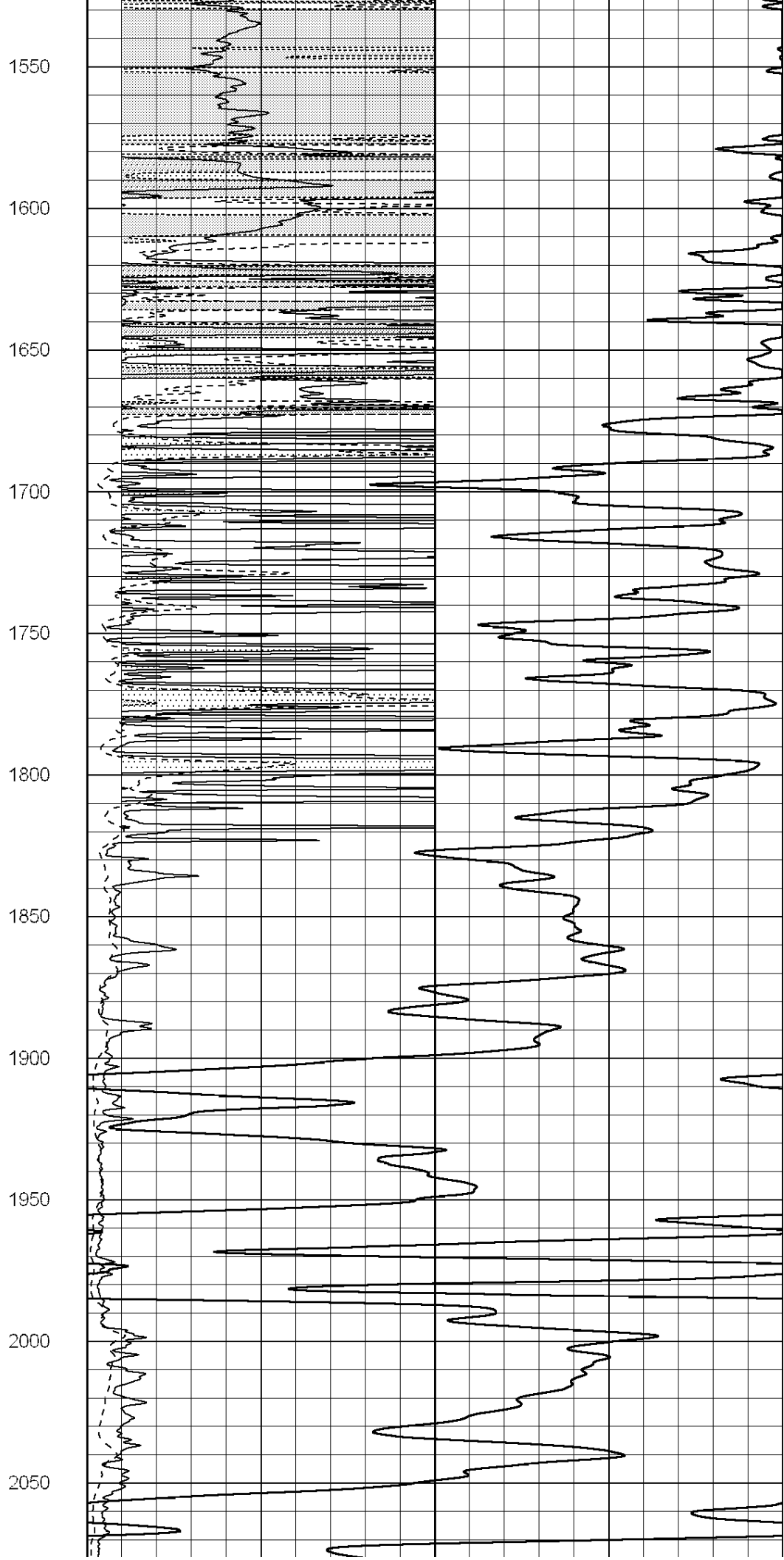
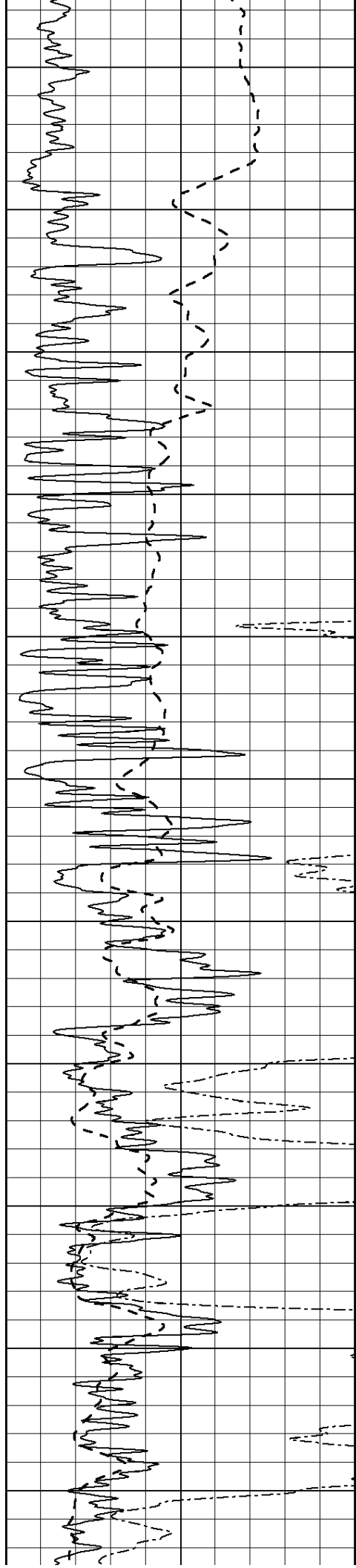
| | | |
|------|---------------|----|
| 0 | RLL3 (Ohm-m) | 50 |
| 0 | RILD (Ohm-m) | 50 |
| 1000 | CILD (mmho/m) | 0 |

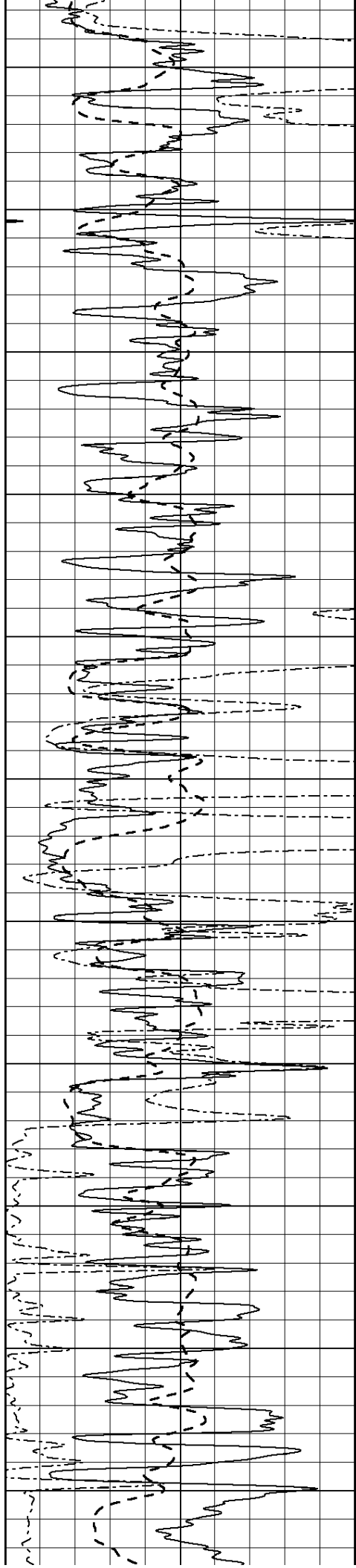
| | | |
|----|------------------|-----|
| 50 | RILD X10 (Ohm-m) | 500 |
| 50 | RLL3 X10 (Ohm-m) | 500 |











2100

2150

2200

2250

2300

2350

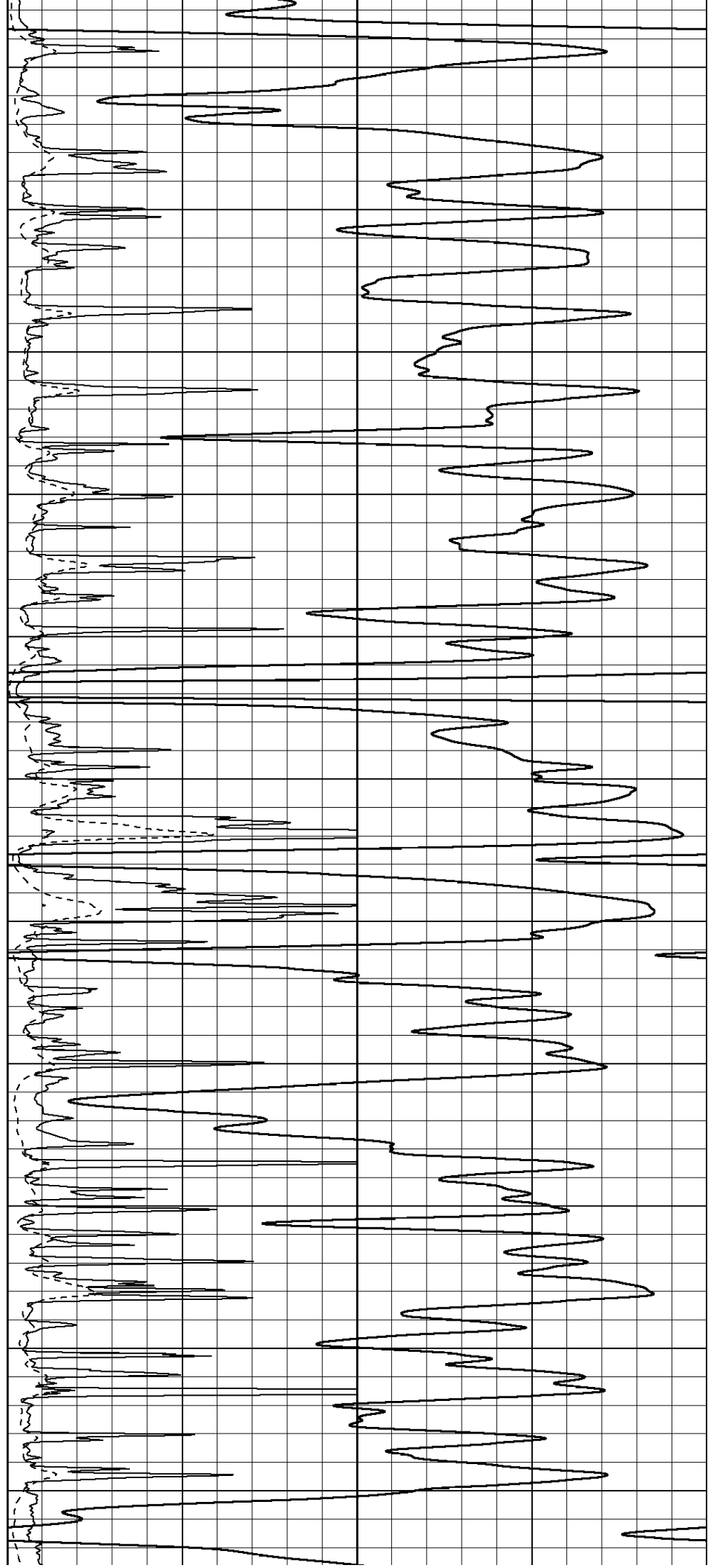
2400

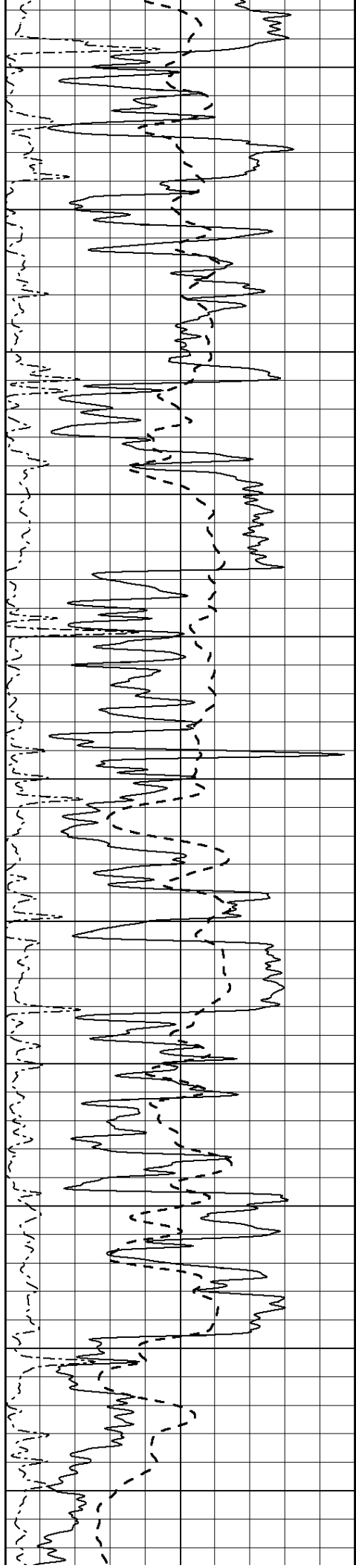
2450

2500

2550

2600





2650

2700

2750

2800

2850

2900

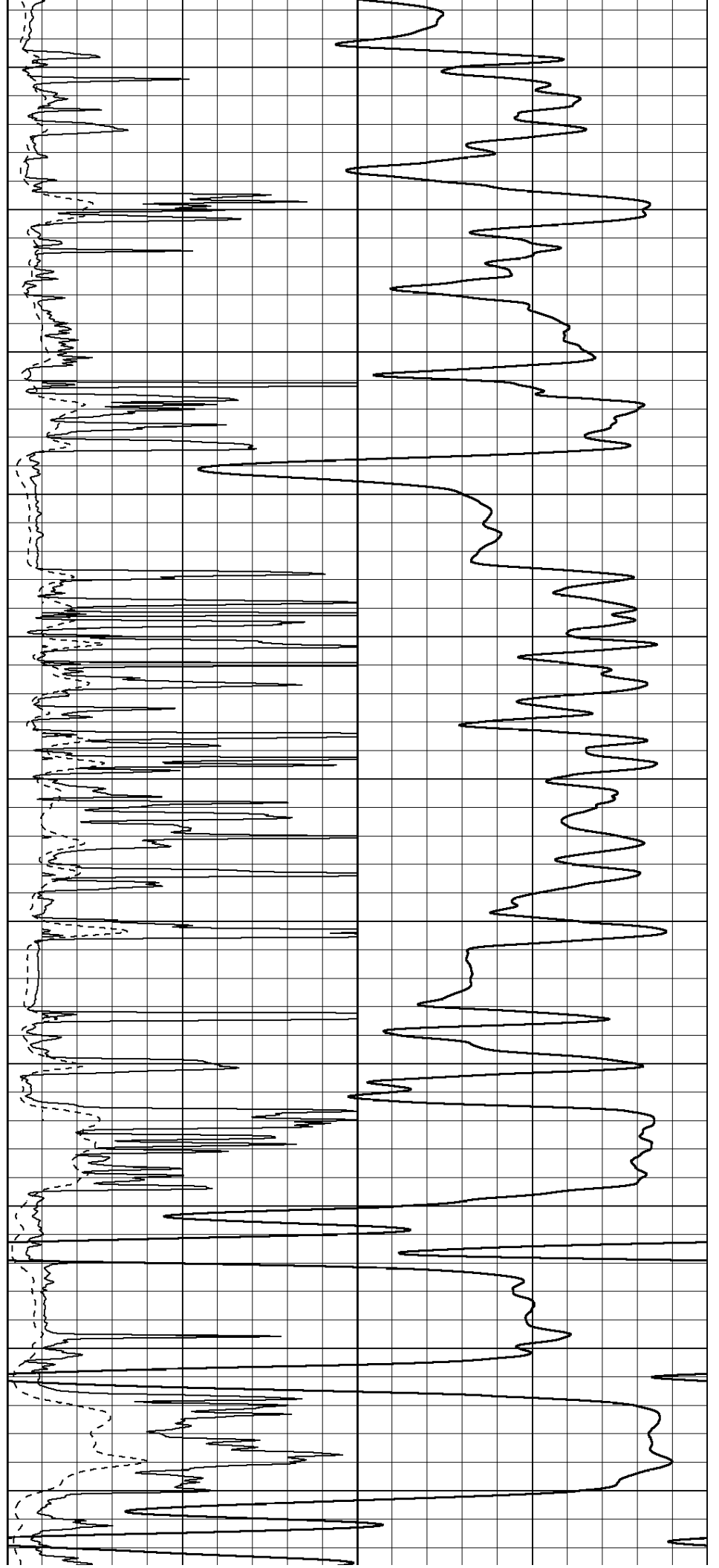
2950

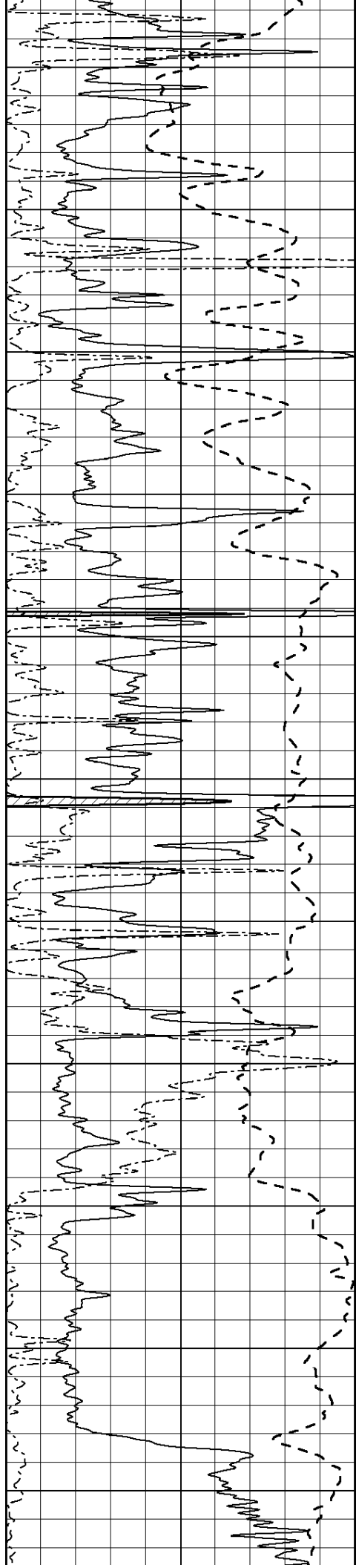
3000

3050

3100

3150





3750

3800

3850

3900

3950

4000

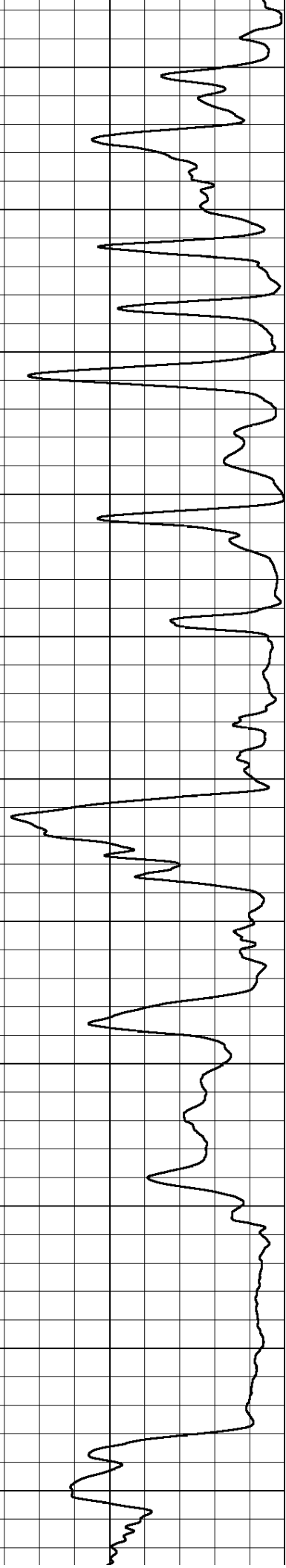
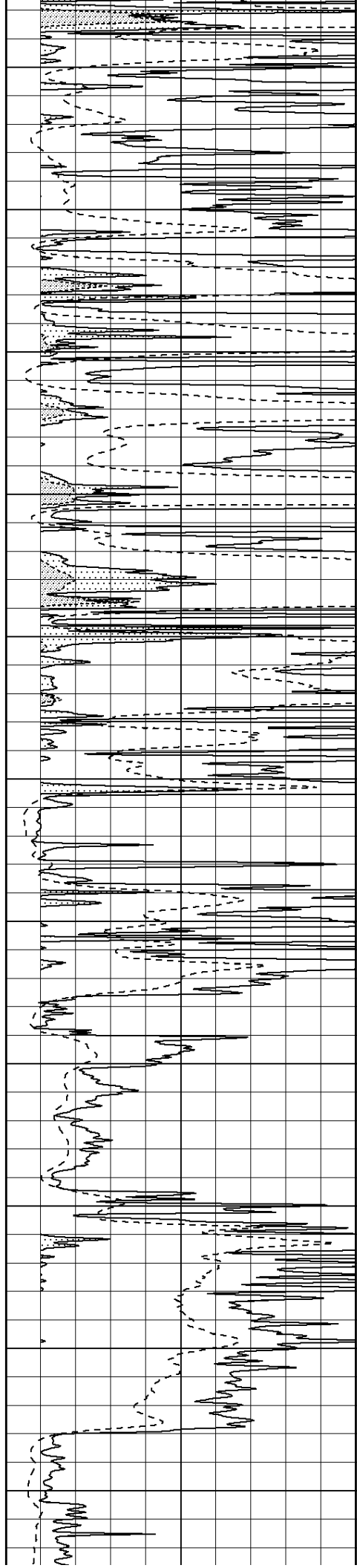
4050

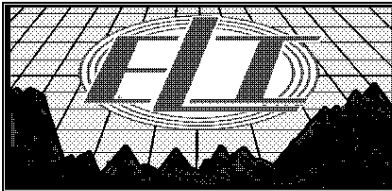
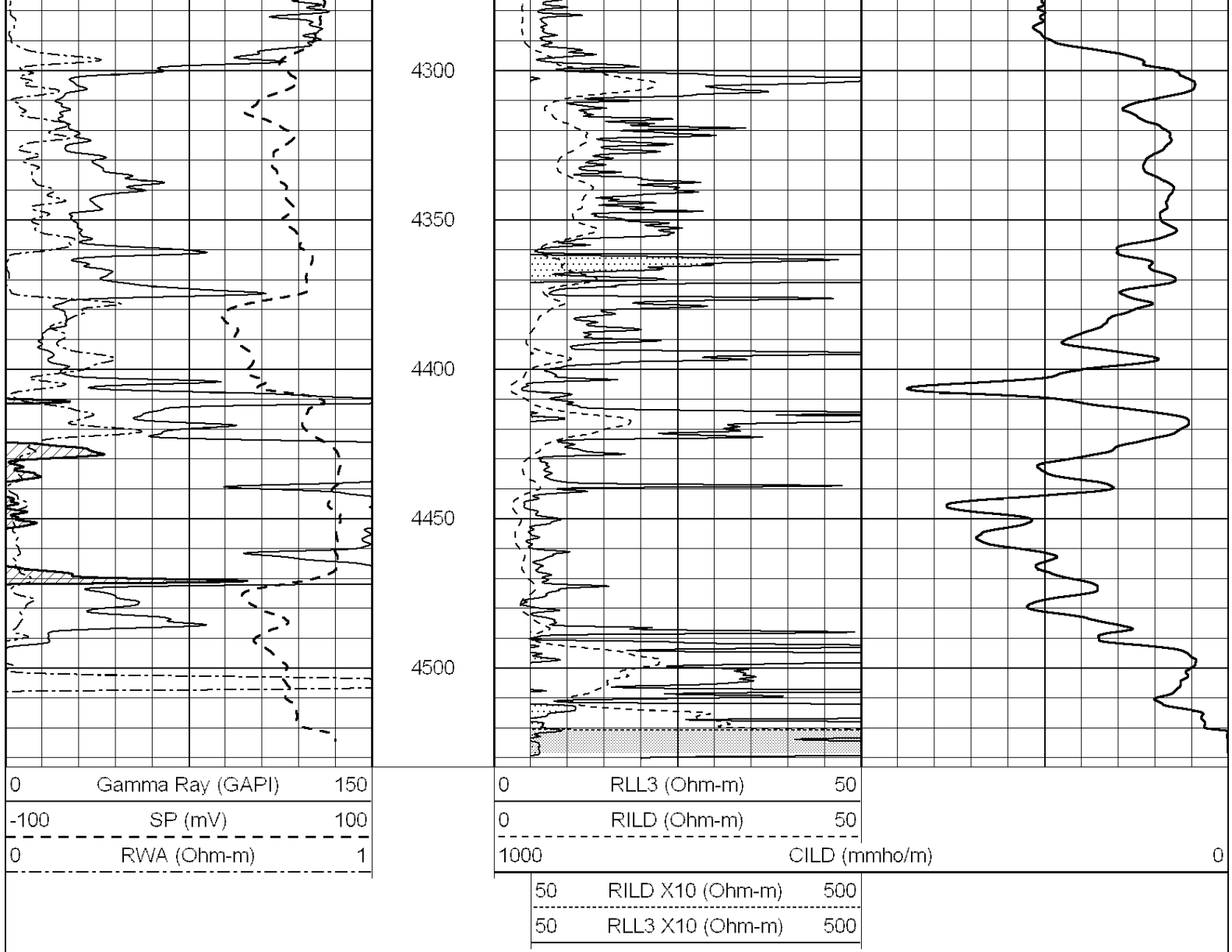
4100

4150

4200

4250

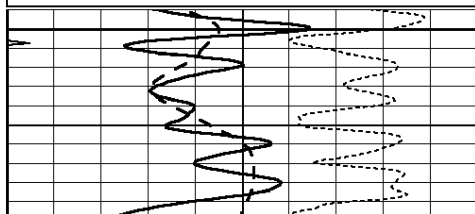




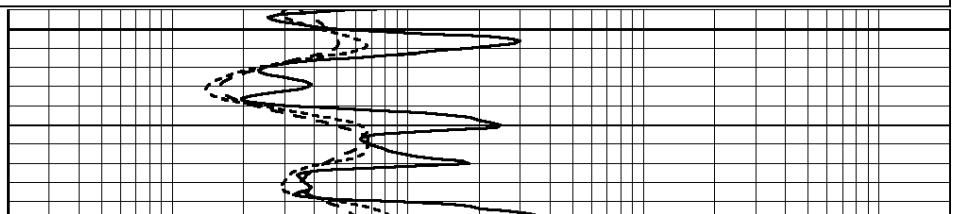
MAIN SECTION

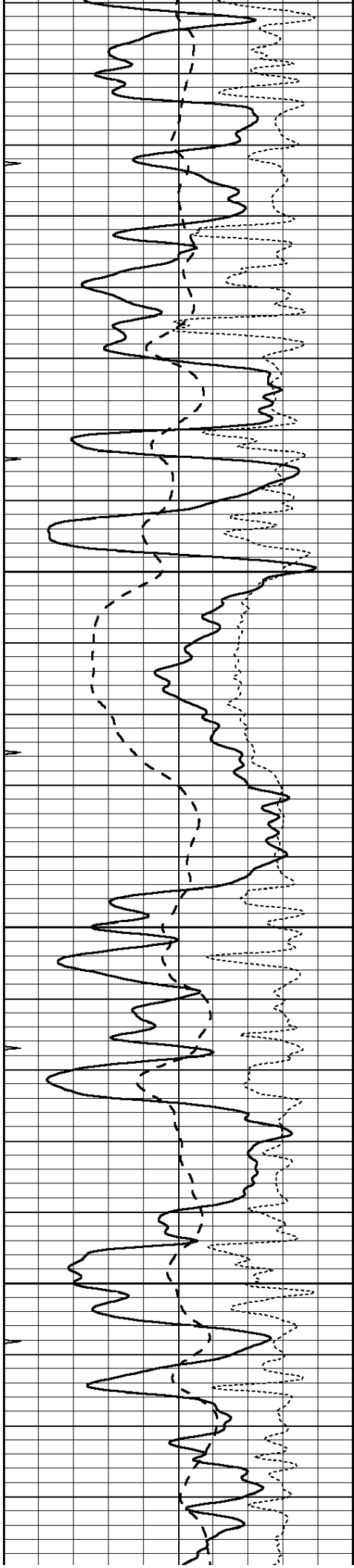
Database File: 2651pe.db
 Dataset Pathname: pass3.7
 Presentation Format: _dil
 Dataset Creation: Tue Jun 12 02:48:17 2018
 Charted by: Depth in Feet scaled 1:240

| | | | | | |
|------|------------------|-----|-----|--------------------------|------|
| 0 | GAMMA RAY (GAPI) | 150 | 0.2 | SHALLOW GUARD (Ohm-m) | 2000 |
| -100 | SP (mV) | 100 | 0.2 | DEEP INDUCTION (Ohm-m) | 2000 |
| -250 | Rxo/Rt | 50 | 0.2 | MEDIUM INDUCTION (Ohm-m) | 2000 |
| 0 | MINMK | 20 | | | |



2500



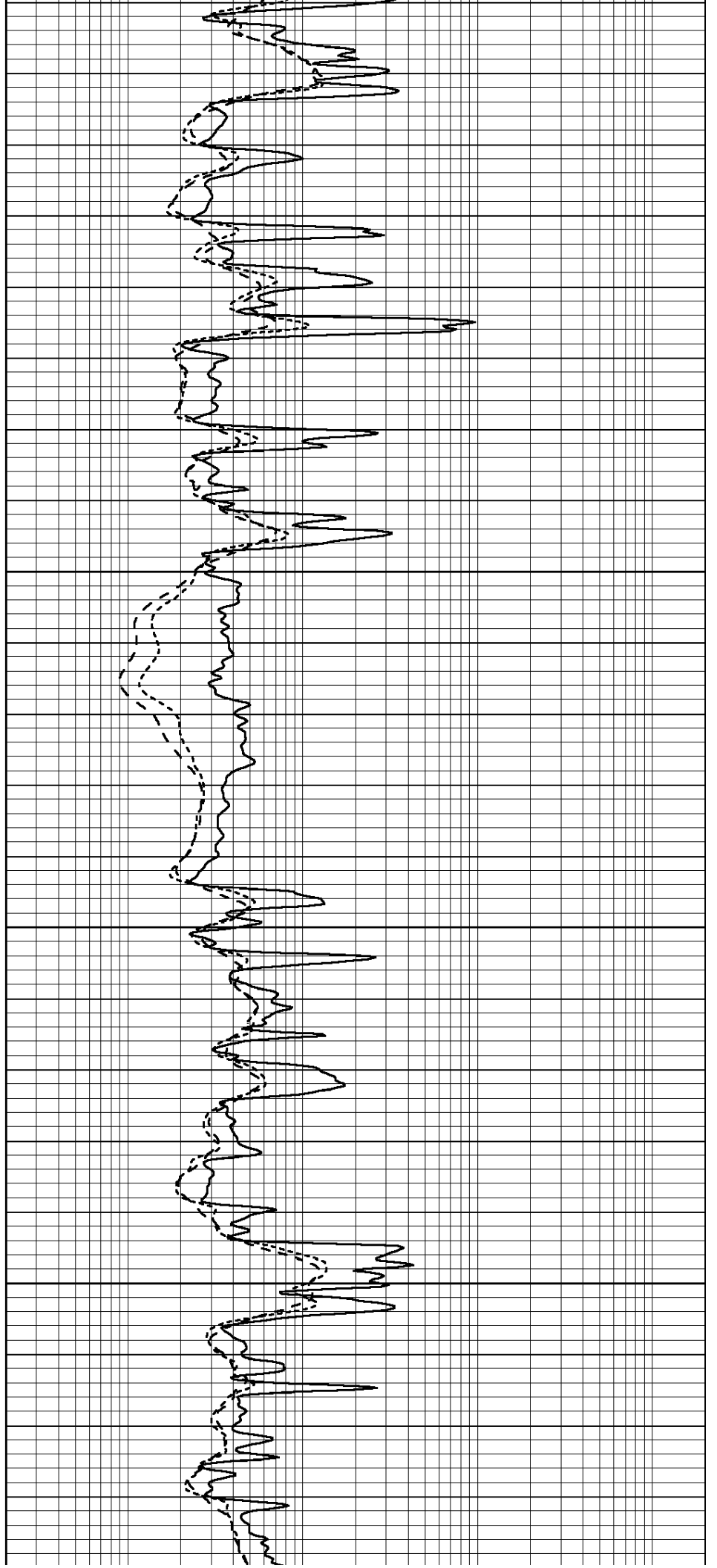


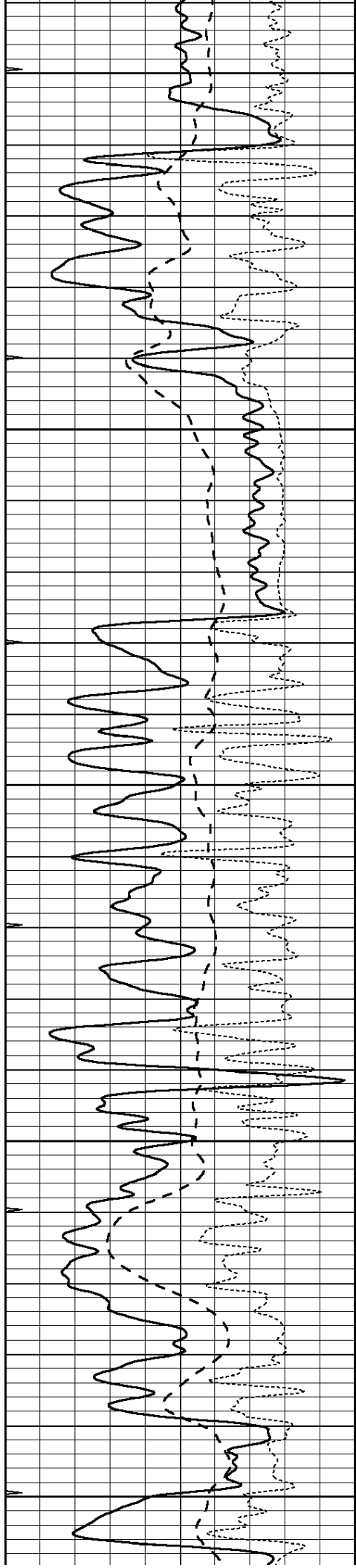
2550

2600

2650

2700





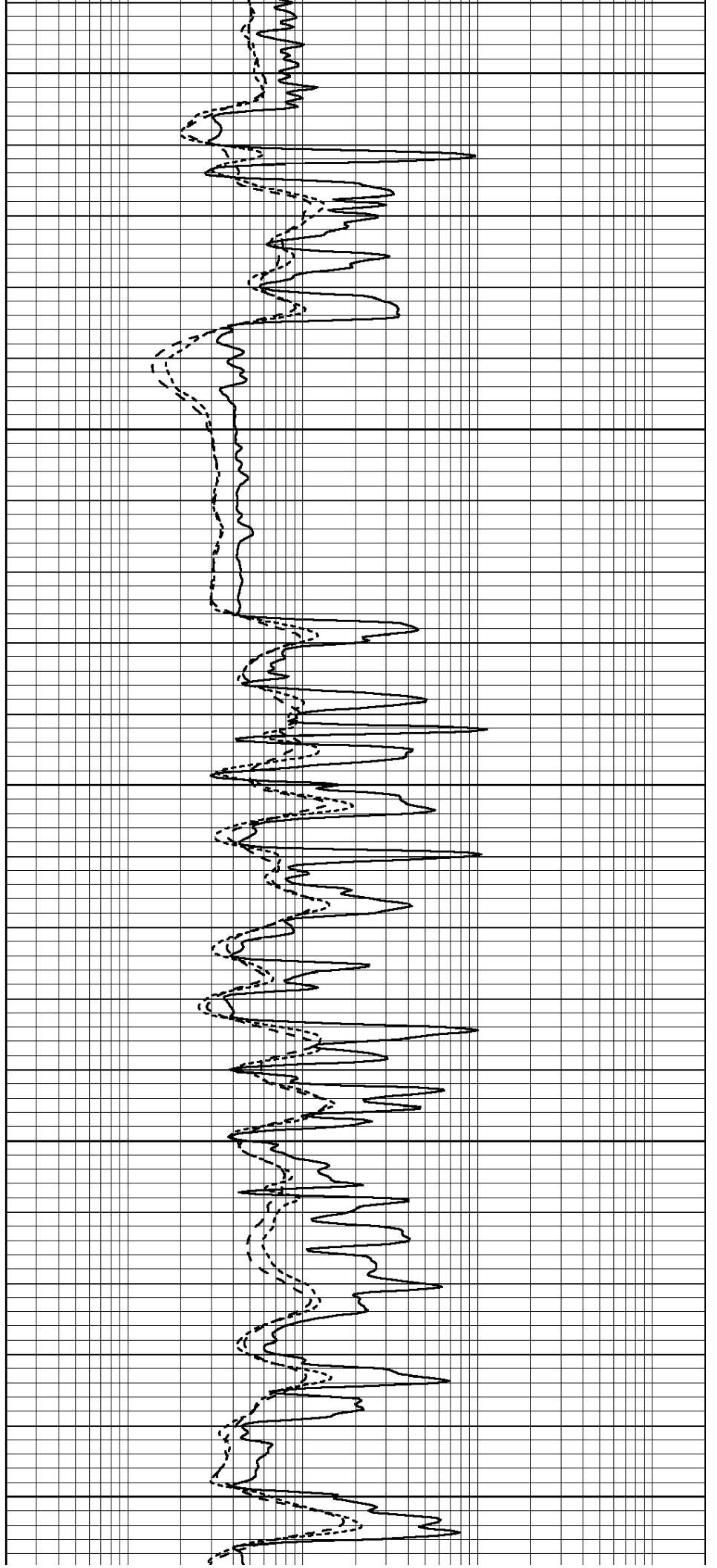
2750

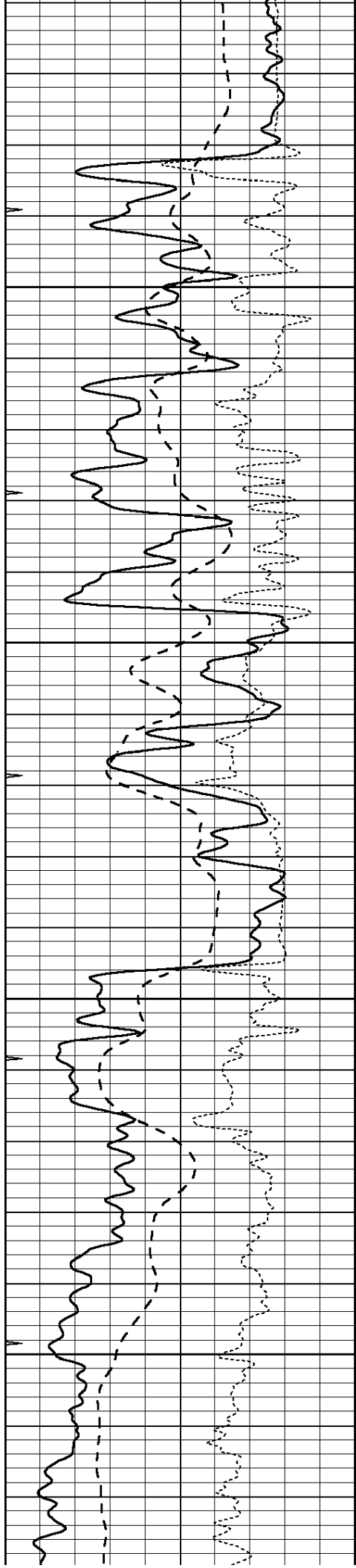
2800

2850

2900

2950



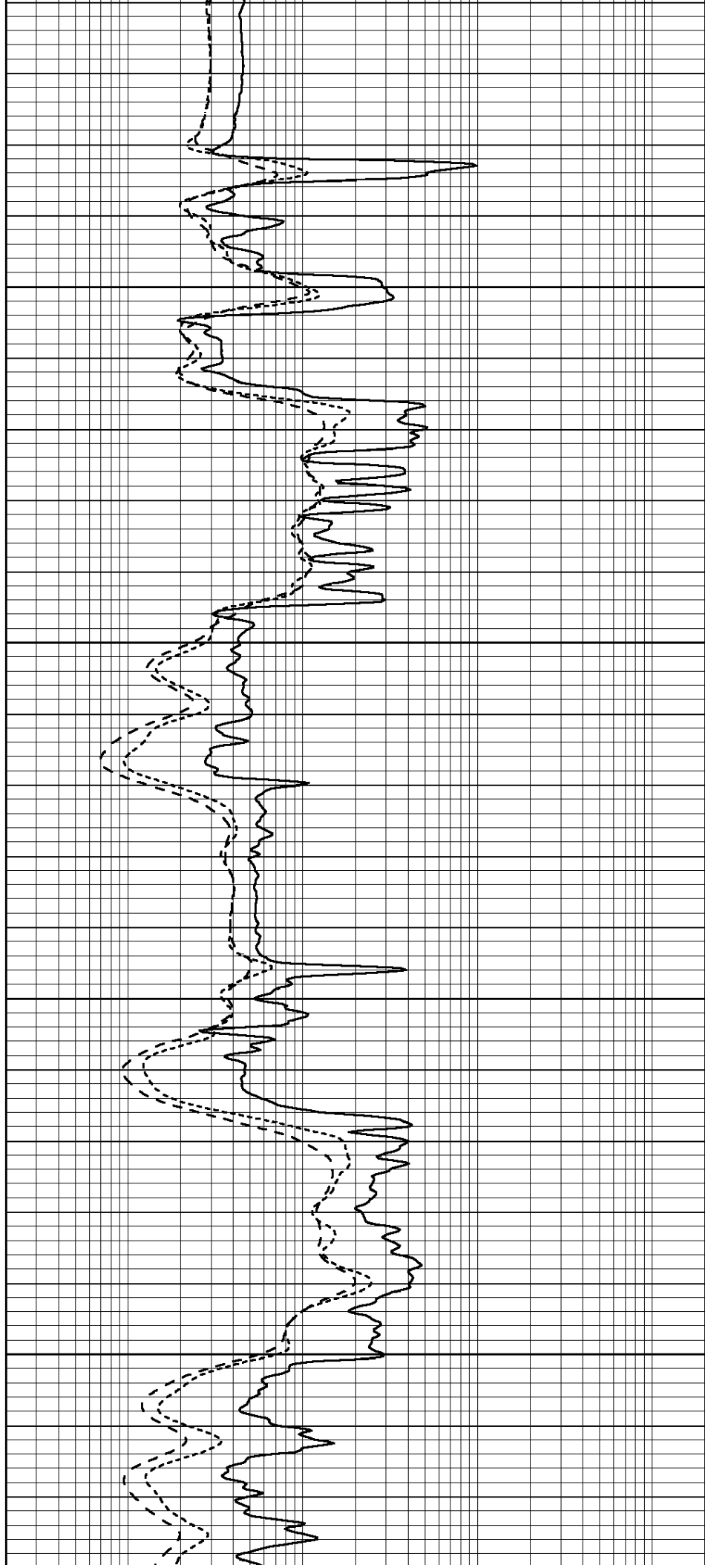


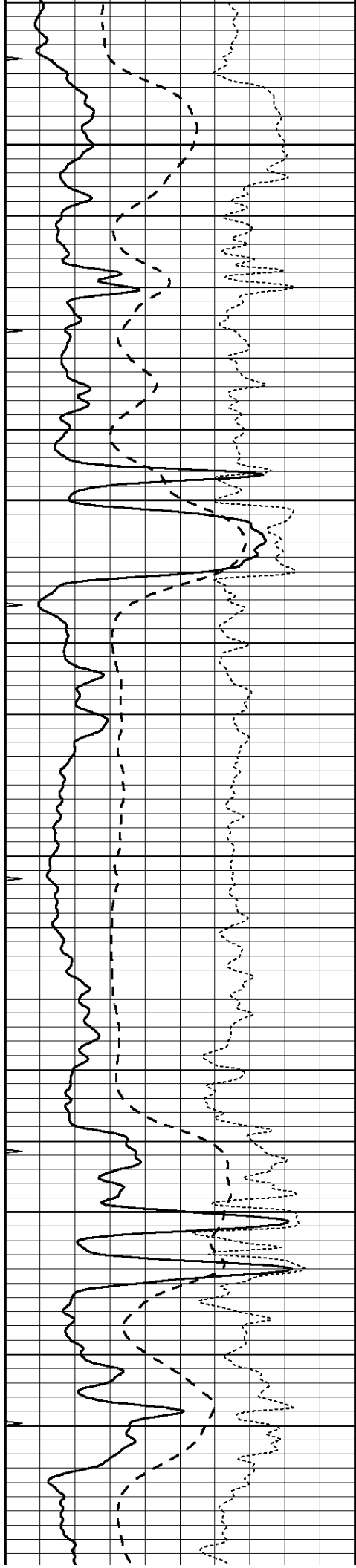
3000

3050

3100

3150





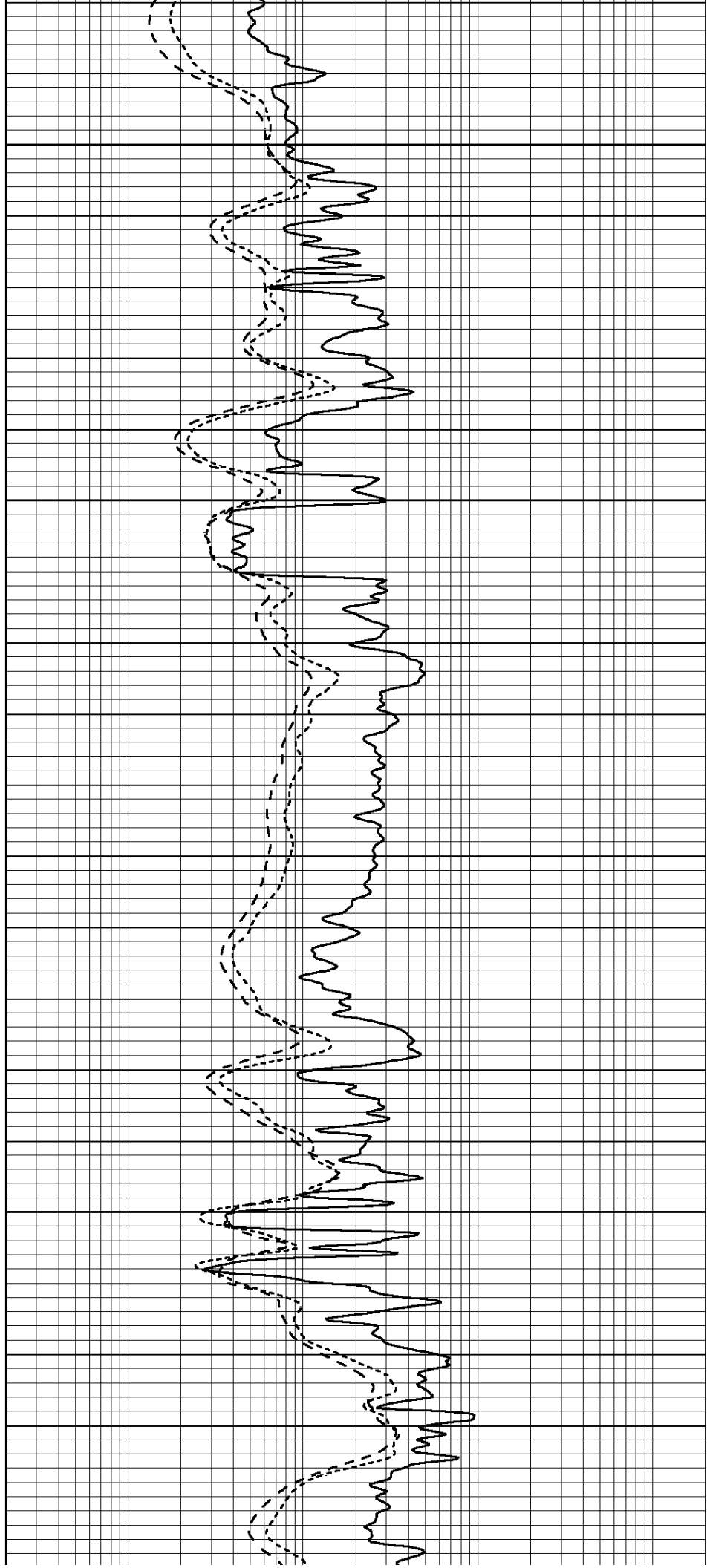
3200

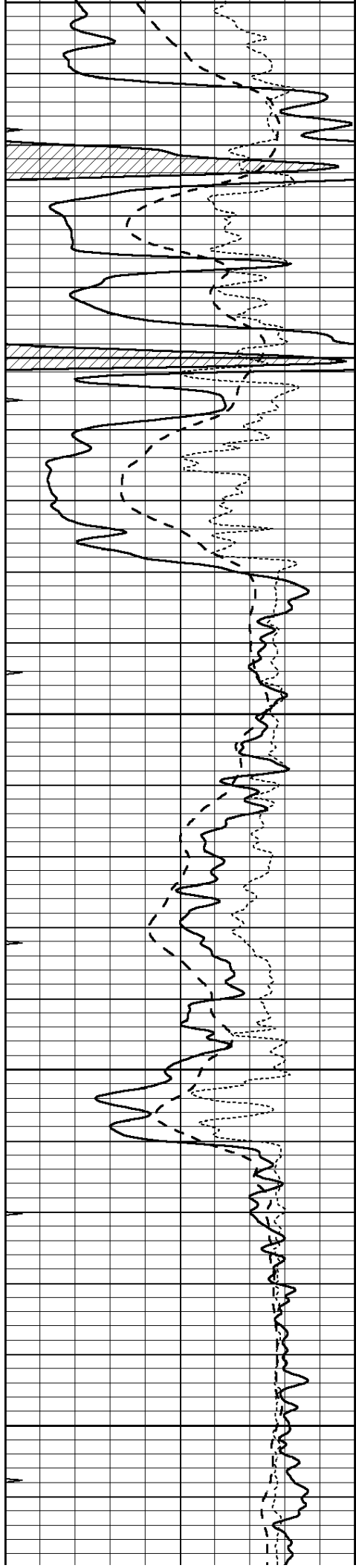
3250

3300

3350

3400





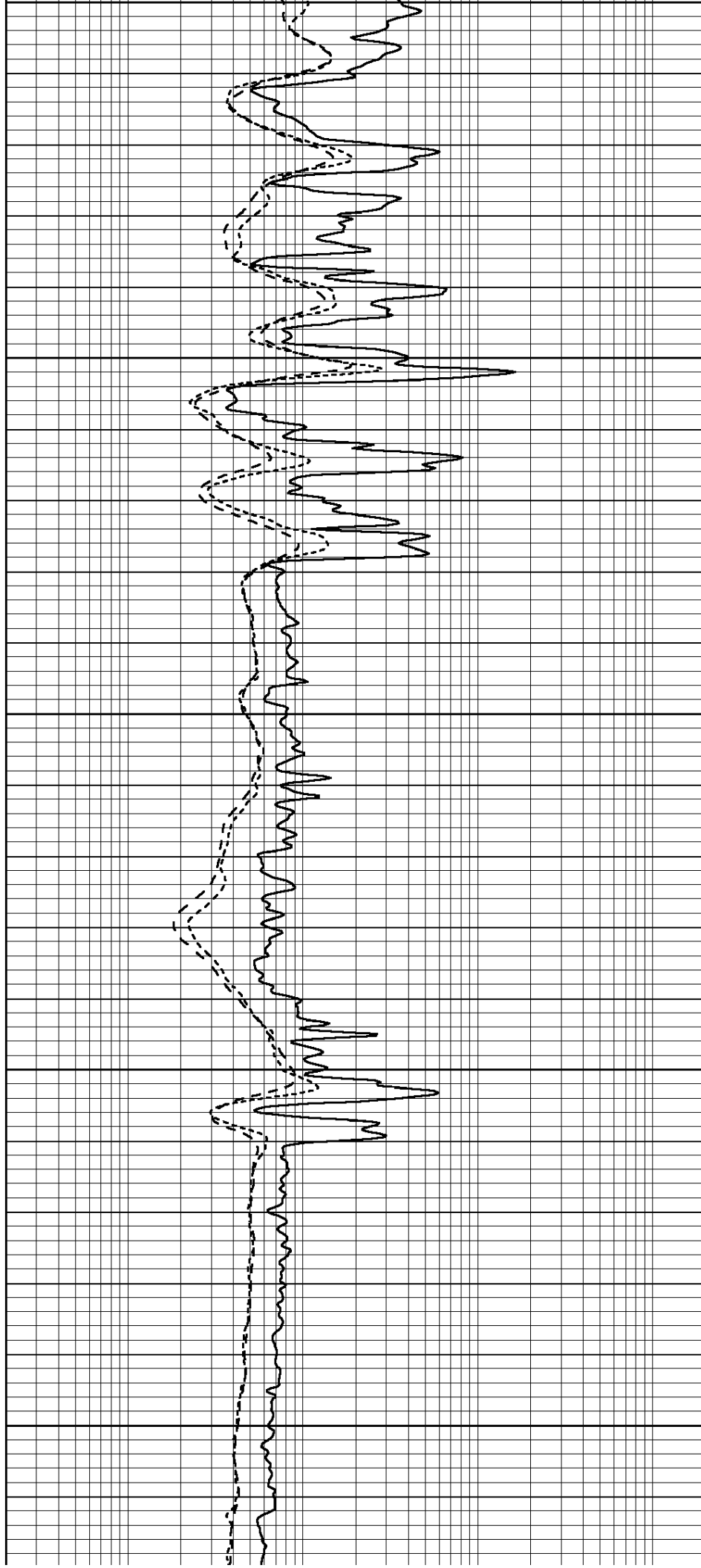
3400

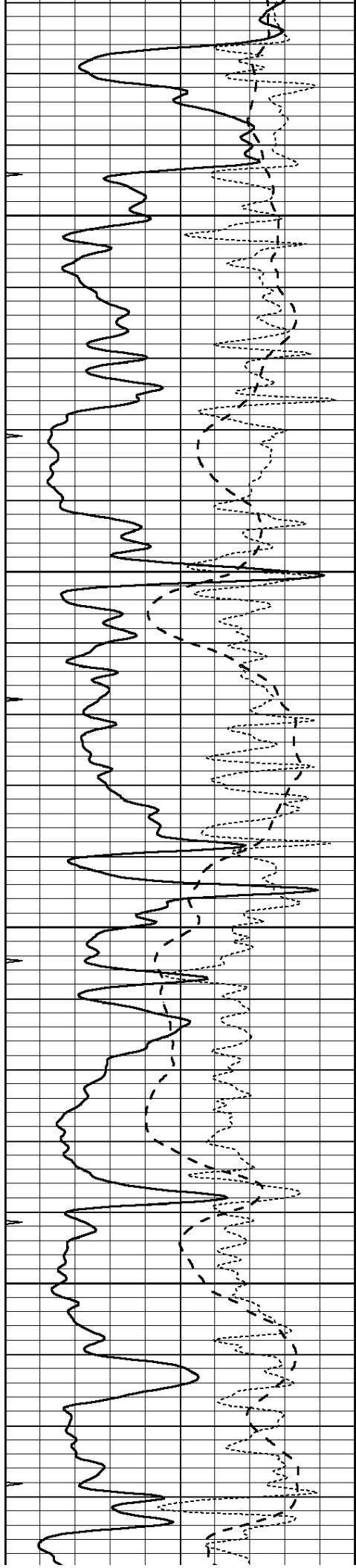
3450

3500

3550

3600



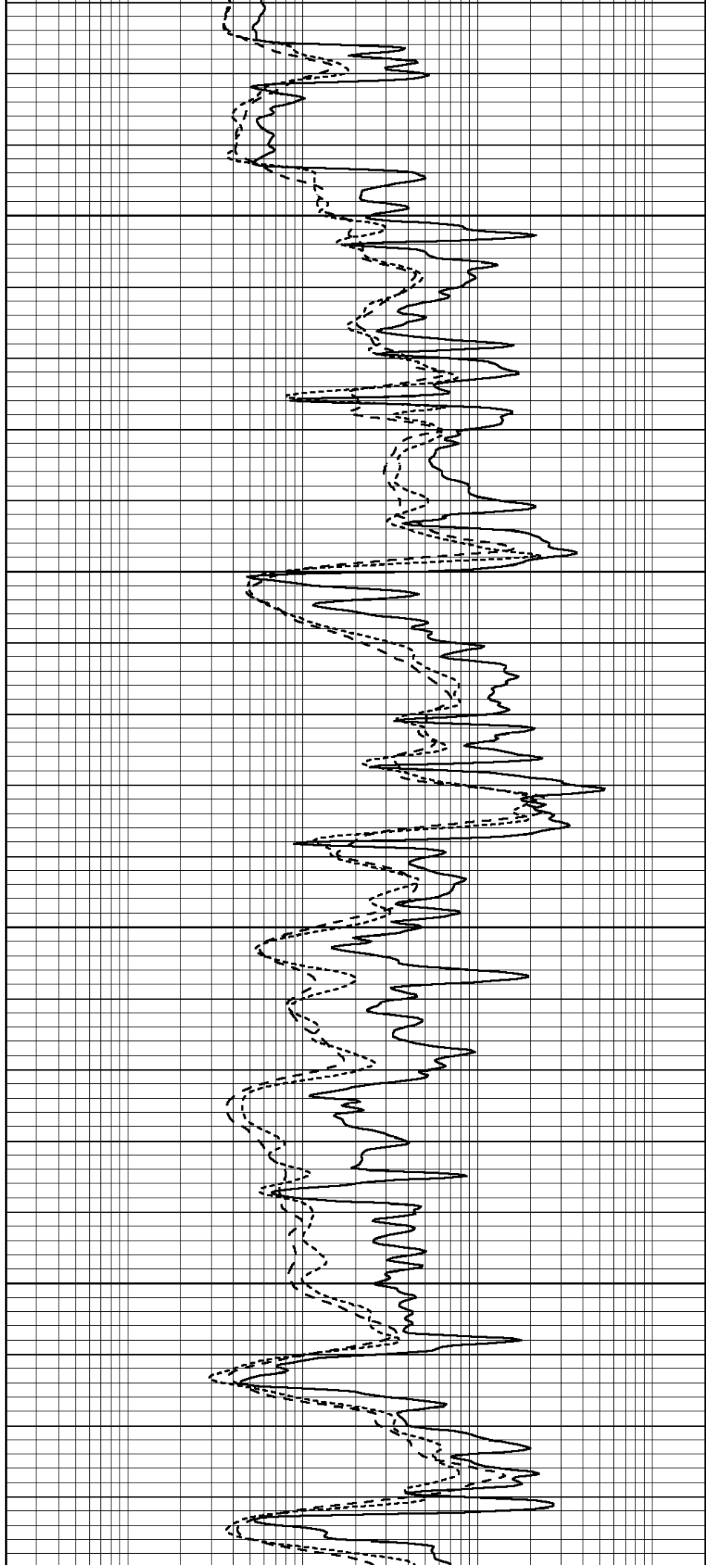


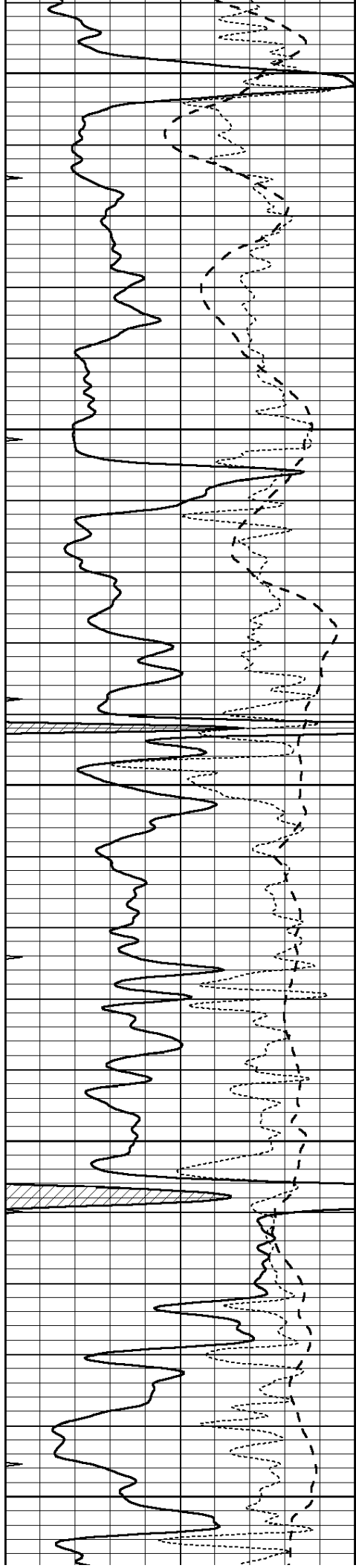
3650

3700

3750

3800





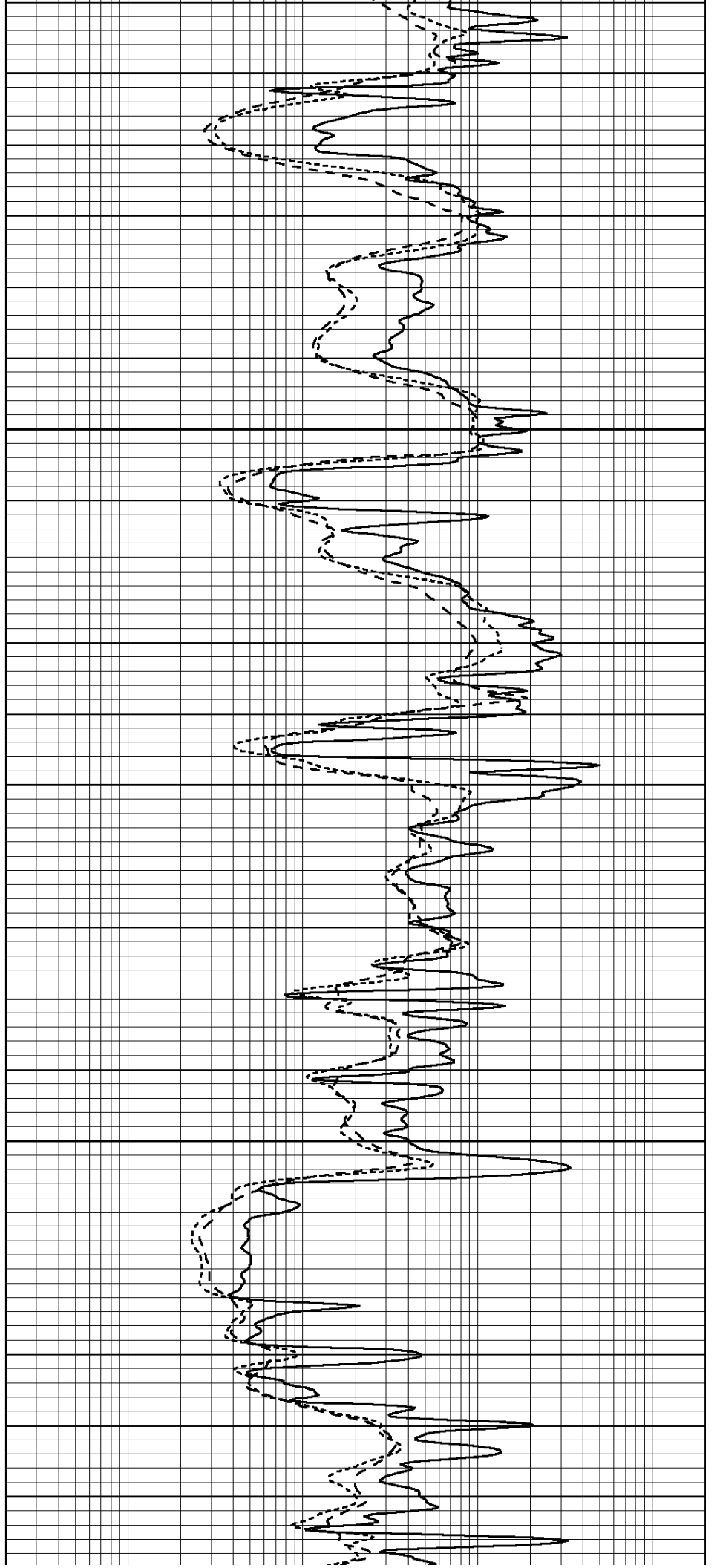
3850

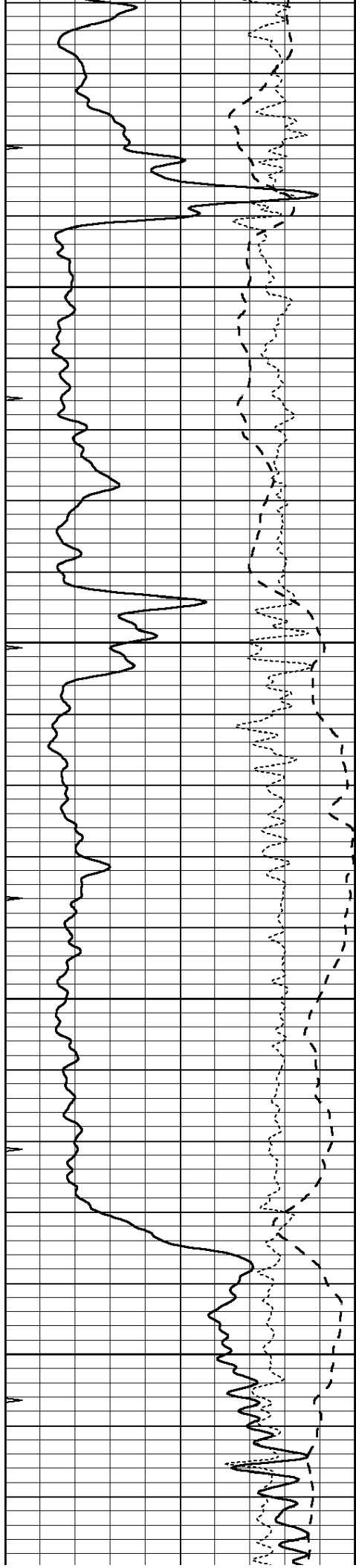
3900

3950

4000

4050



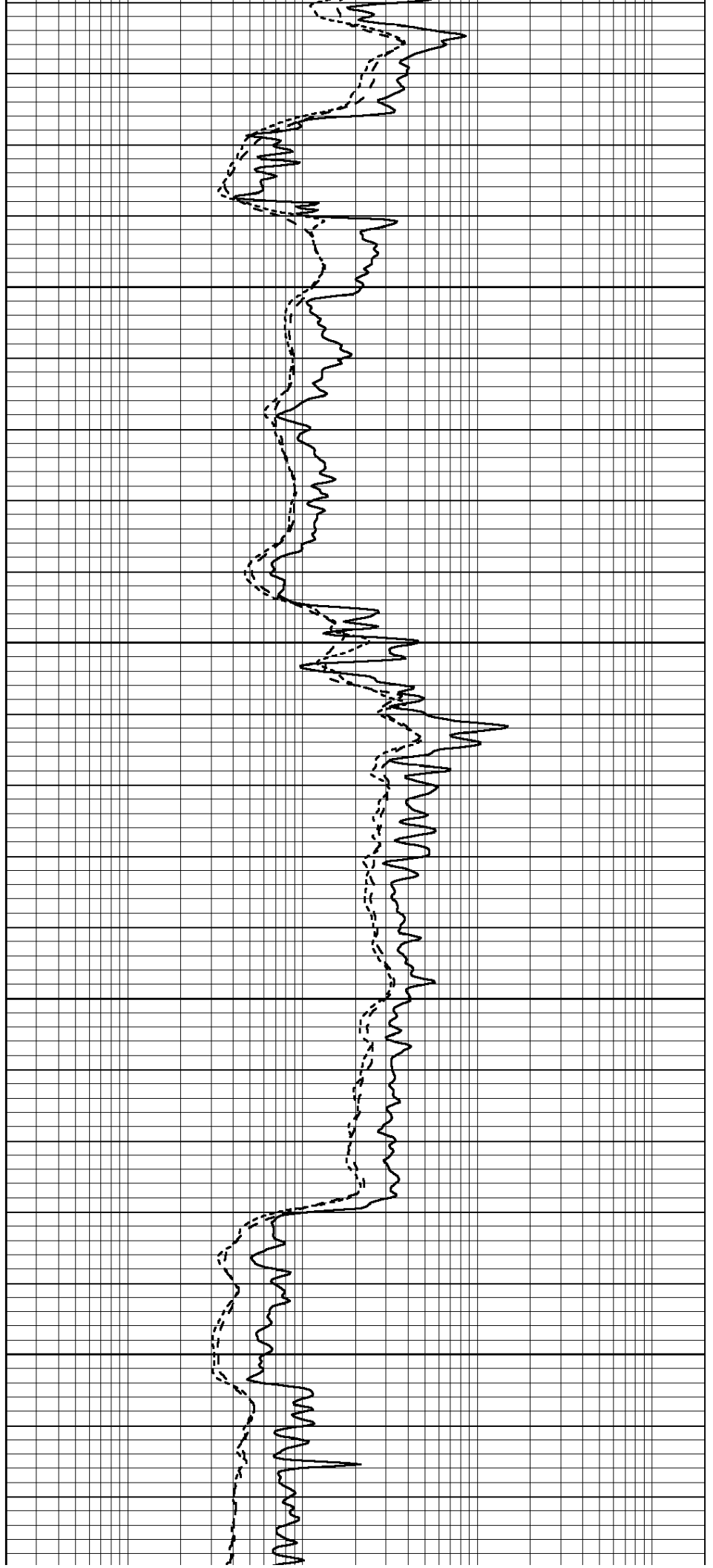


4100

4150

4200

4250





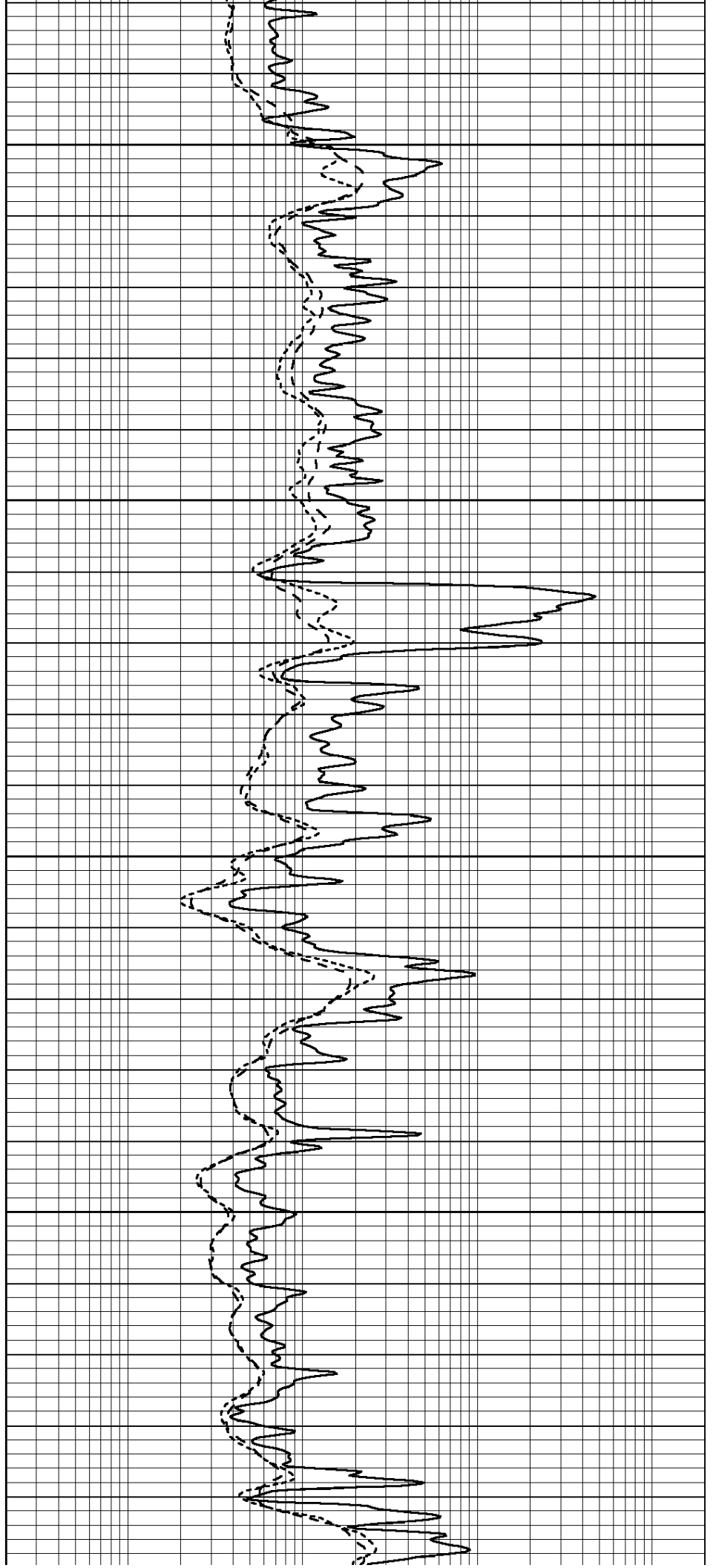
4300

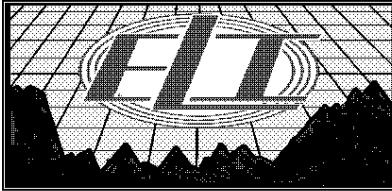
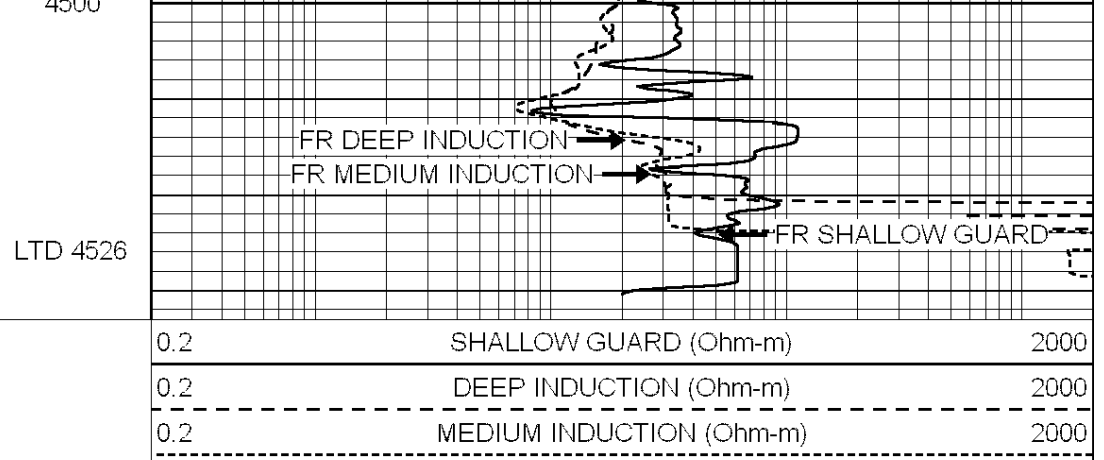
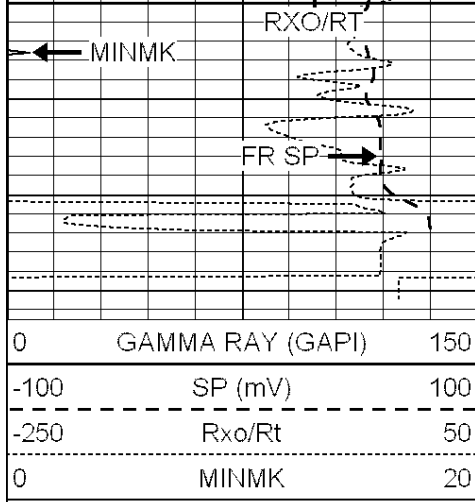
4350

4400

4450

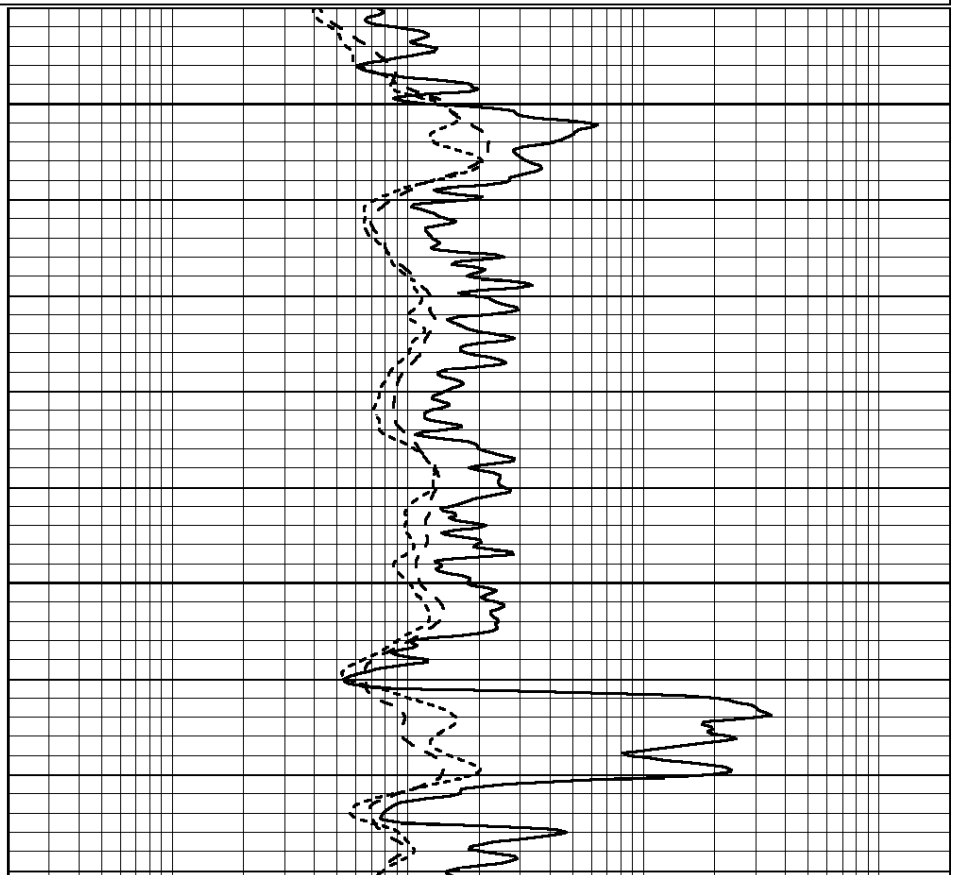
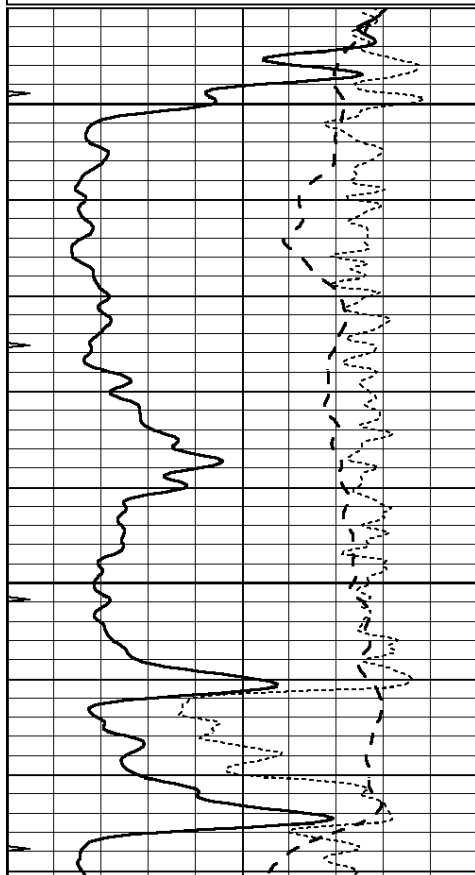
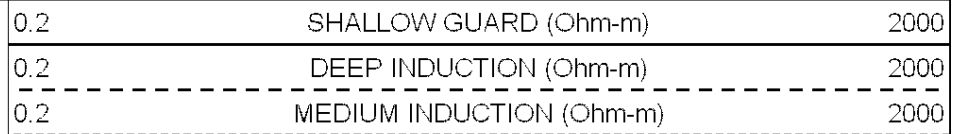
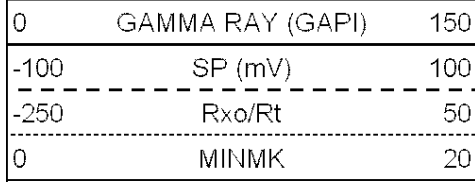
4500

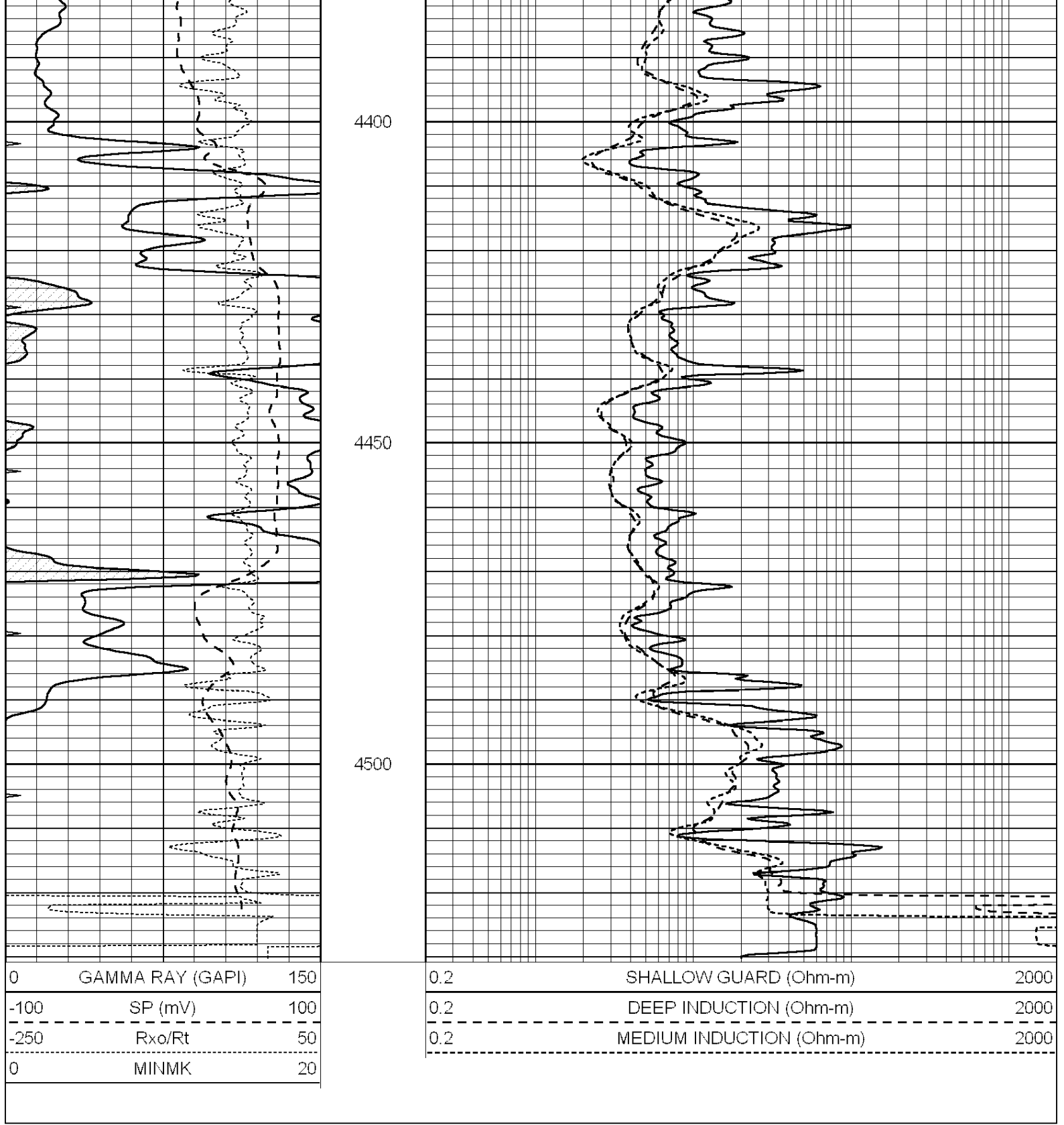




REPEAT SECTION

Database File: 2651pe.db
 Dataset Pathname: pass2.4
 Presentation Format: _dil
 Dataset Creation: Tue Jun 12 02:27:53 2018 by Calc SOC 120430
 Charted by: Depth in Feet scaled 1:240





Calibration Report

Database File: 1598ddn.db
 Dataset Pathname: pass4
 Dataset Creation: Wed Aug 30 02:13:00 2017 by Log SOC 120430

Dual Induction Calibration Report

Serial-Model: PROBE7-DILG
 Surface Cal Performed: Wed Aug 30 00:06:33 2017
 Downhole Cal Performed: Mon Jul 28 12:02:56 2008
 After Survey Verification Performed: Mon Jul 28 12:02:56 2008

| Surface Calibration | | | Readings | | References | | Results | |
|---------------------|--------|-------|----------|-------|------------|--------|---------|---------|
| Loop: | Air | Loop | | Air | Loop | | m | b |
| Deep | -0.014 | 0.629 | V | 0.000 | 400.000 | mmho/m | 620.000 | 0.000 |
| Medium | 0.039 | 0.728 | V | 0.000 | 464.000 | mmho/m | 675.000 | -44.000 |
| Internal: | Zero | Cal | | Zero | Cal | | m | b |
| Deep | 0.011 | 0.610 | V | 0.000 | 400.000 | mmho/m | 667.135 | -7.256 |
| Medium | 0.005 | 0.712 | V | 0.000 | 464.000 | mmho/m | 655.677 | -3.102 |

| Downhole Calibration | | | Readings | | References | | Results | |
|----------------------|-------|--------|----------|---------|------------|--------|---------|-------|
| | Zero | Cal | | Zero | Cal | | m' | b' |
| Deep | 0.000 | 0.000 | mmho/m | 14.508 | 388.384 | mmho/m | 1.000 | 0.000 |
| Medium | 0.000 | 0.000 | mmho/m | 166.367 | 504.400 | mmho/m | 1.000 | 0.000 |
| LL3 | | 7.500 | V | | 1400.000 | Ohm-m | | |
| | | 0.000 | V | | 20.000 | Ohm-m | | |
| | | -7.200 | V | | 4000.000 | mmho-m | | |

| After Survey Verification | | | Readings | | Targets | | Results | |
|---------------------------|-------|-------|----------|-------|---------|--------|---------|-------|
| | Zero | Cal | | Zero | Cal | | m' | b' |
| Deep | 0.000 | 0.000 | mmho/m | 0.000 | 0.000 | mmho/m | 0.000 | 0.000 |
| Medium | 0.000 | 0.000 | mmho/m | 0.000 | 0.000 | mmho/m | 0.000 | 0.000 |
| LL3 | | 1.000 | Ohm-m | | 1.000 | Ohm-m | | |
| | | 0.000 | Ohm-m | | 0.000 | Ohm-m | | |
| | | 1.000 | mmho-m | | 1.000 | mmho-m | | |

Litho Density Calibration Report
Serial: 002 Model: PRB

| Master Calibration | | Performed Mon Aug 21 11:27:42 2017 | | | |
|--------------------|------------|------------------------------------|----------|---------------------|---------|
| | Background | Magnesium | Aluminum | Sandstone | |
| Window 1 | 837.1 | 10632.5 | 2945.1 | 12110.1 | cps |
| Window 2 | 772.0 | 9117.4 | 2570.1 | 10197.3 | cps |
| Window 3 | 631.7 | 4669.0 | 1481.9 | 5042.9 | cps |
| Window 4 | 187.0 | 187.5 | 185.9 | 189.9 | cps |
| Long Space | 0.0 | 8345.4 | 1798.1 | 9425.3 | cps |
| Short Space | 1.1 | 1927.9 | 1285.9 | 2050.2 | cps |
| Rho | | 1.7100 | 2.5960 | 1.3800 | g/cc |
| Pe | | 0.0000 | 2.5700 | 1.5500 | |
| Rib Angle | : 45.2 | Rib Slope | : 1.008 | Density/Spine Ratio | : 0.558 |
| Spine Angle | : 75.2 | Spine Slope | : 3.790 | Spine Intercept | : -19.6 |

| Before Survey Verification | | Performed Wed Dec 31 18:00:00 1969 | | | |
|----------------------------|-----|------------------------------------|--------|--------|------|
| | | | | | |
| Window 1 | 0.0 | 0.0 | 0.0 | 0.0 | cps |
| Window 2 | 0.0 | 0.0 | 0.0 | 0.0 | cps |
| Window 3 | 0.0 | 0.0 | 0.0 | 0.0 | cps |
| Window 4 | 0.0 | 0.0 | 0.0 | 0.0 | cps |
| Long Space | 0.0 | 0.0 | 0.0 | 0.0 | cps |
| Short Space | 0.0 | 0.0 | 0.0 | 0.0 | cps |
| Measured Rho | | 0.0000 | 0.0000 | 0.0000 | g/cc |
| Measured Correction | | 0.0000 | 0.0000 | 0.0000 | g/cc |
| Measured Pe | | | 0.0000 | 0.0000 | |

| | | | | | |
|---------------------|-----|--------|--------|--------|------|
| Window 1 | 0.0 | 0.0 | 0.0 | 0.0 | cps |
| Window 2 | 0.0 | 0.0 | 0.0 | 0.0 | cps |
| Window 3 | 0.0 | 0.0 | 0.0 | 0.0 | cps |
| Window 4 | 0.0 | 0.0 | 0.0 | 0.0 | cps |
| Long Space | 0.0 | 0.0 | 0.0 | 0.0 | cps |
| Short Space | 0.0 | 0.0 | 0.0 | 0.0 | cps |
| Measured Rho | | 0.0000 | 0.0000 | 0.0000 | g/cc |
| Measured Correction | | 0.0000 | 0.0000 | 0.0000 | g/cc |
| Measured Pe | | | 0.0000 | 0.0000 | |

Compensated Neutron Calibration Report

Serial Number: 070808
Tool Model: Probe

PRE-SURVEY VERIFICATION

| Detector | Readings | Measured | Target |
|-------------|----------|----------|--------|
| Short Space | cps | | |
| Long Space | cps | pu | pu |

POST-SURVEY VERIFICATION

| Detector | Readings | Measured | Target |
|-------------|----------|----------|--------|
| Short Space | cps | | |
| Long Space | cps | pu | pu |

Gamma Ray Calibration Report

Serial Number: 070558
Tool Model: OPEN_GR
Performed: Wed May 31 00:09:32 2017

Calibrator Value: 1.0 GAPI

Background Reading: 0.0 cps
Calibrator Reading: 1.0 cps

Sensitivity: 0.2800 GAPI/cps