



**DUAL
INDUCTION
LOG**

Company	King Oil Operations	Company	King Oil Operations
Well	Stevenson #1-10	Well	Stevenson #1-10
Field	Wildcat	Field	Wildcat
County	Gove	County	Gove
State	Kansas	State	Kansas
Location:	1575' FNL & 1830' FWL		API #: 15 063 22341
Permanent Datum	SEC 9 TWP 13S RGE 31W	Ground Level	Elevation 2945'
Log Measured From	KB 8' AGL	Drilling Measured From	KB
Other Services	CDNL		
Elevation	K.B. 2953' D.F. 2952' G.L. 2945'		

Date	9-19-18
Run Number	One
Depth Driller	4669'
Depth Logger	4674'
Bottom Logged Interval	4672'
Top Log Interval	210'
Casing Driller	8 5/8" @ 220'
Casing Logger	220'
Bit Size	7 7/8"
Type Fluid in Hole	Chemical
Density / Viscosity	9.2/60
PH / Fluid Loss	9.0/8.8
Source of Sample	Pit
Rm @ Meas. Temp	0.8@86degf
Rmf @ Meas. Temp	0.60@86degf
Rmc @ Meas. Temp	0.96@86degf
Source of Rmf / Rmc	Calculated
Rm @ BHT	0.59@117degf
Time Circulation Stopped	6:30 a.m
Time Logger on Bottom	9:45 a.m
Maximum Recorded Temperature	117degf
Equipment Number	T127
Location	Hays, KS
Recorded By	C.Patterson
Witnessed By	Mr. Jason T Alm

<<< Fold Here >>>

All interpretations are opinions based on inferences from electrical or other measurements and we cannot and do not guarantee the accuracy or correctness of any interpretation, and we shall not, except in the case of gross or willful negligence on our part, be liable or responsible for any loss, costs, damages, or expenses incurred or sustained by anyone resulting from any interpretation made by any of our officers, agents or employees. These interpretations are also subject to our general terms and conditions set out in our current Price Schedule.

Comments

South out of Oakley on 83 Hwy. 12 mi. to Gove Rd.(Seneca/Gove S Rd.),
Then go 6 mi. East on Gove Rd.(Seneca/Gove S RD.) to 16 Rd.
Then South on 16 Rd. Approx. 1 mi. East into Location(Before farm house drive way)

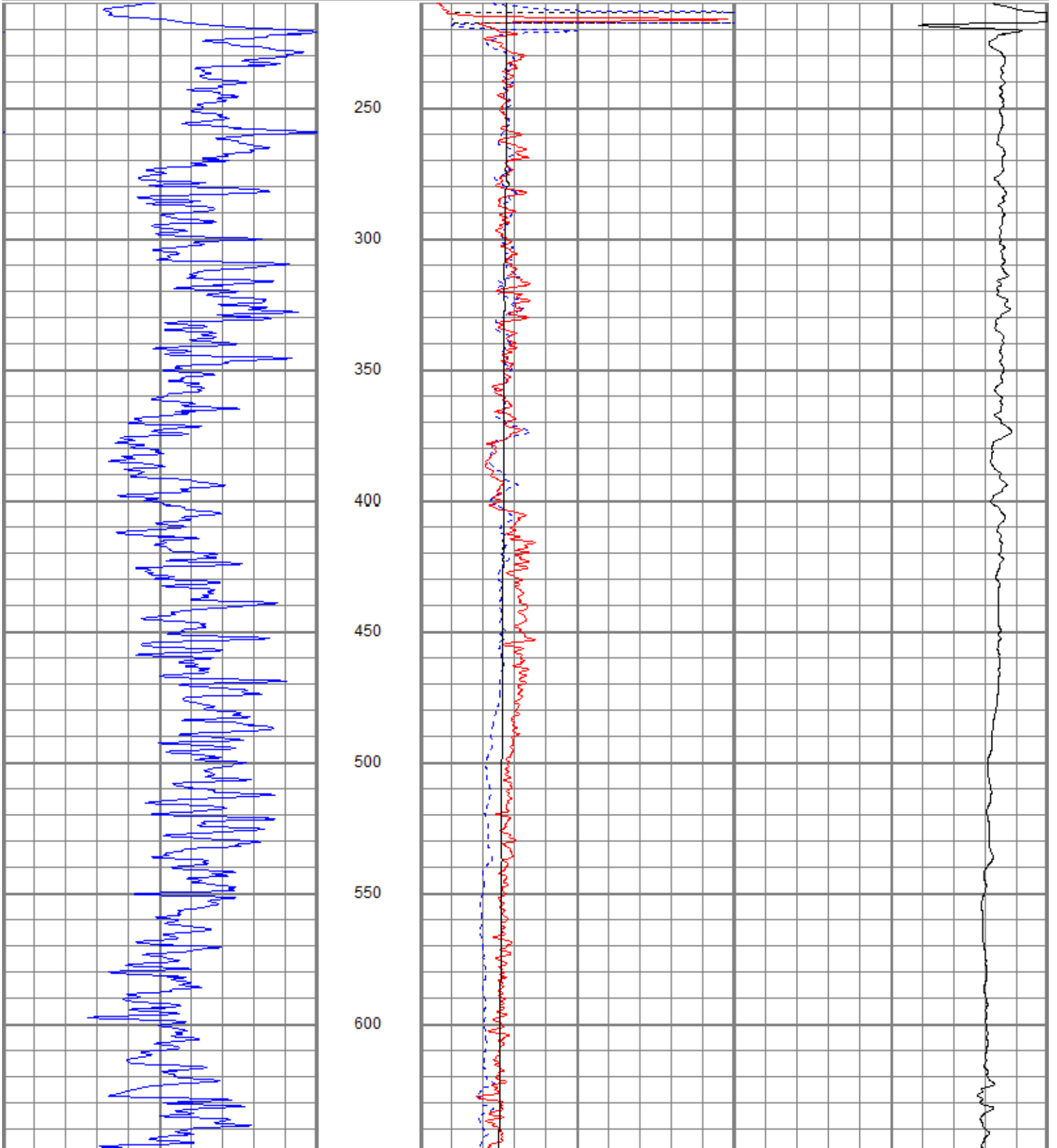
Thanks for using Gemini Wireline LLC
785-625-1182

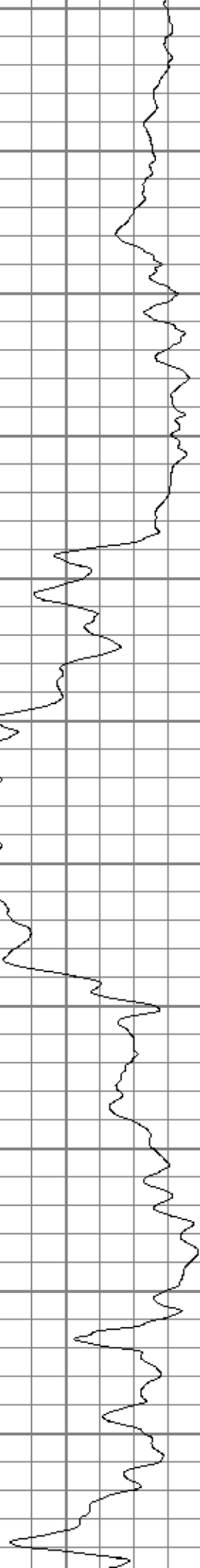
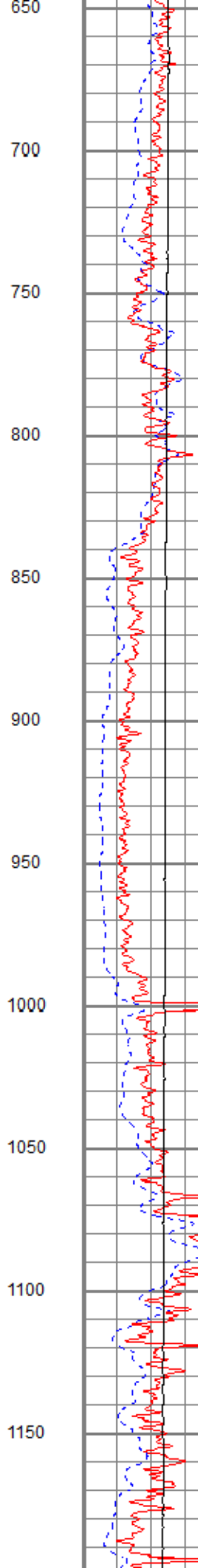
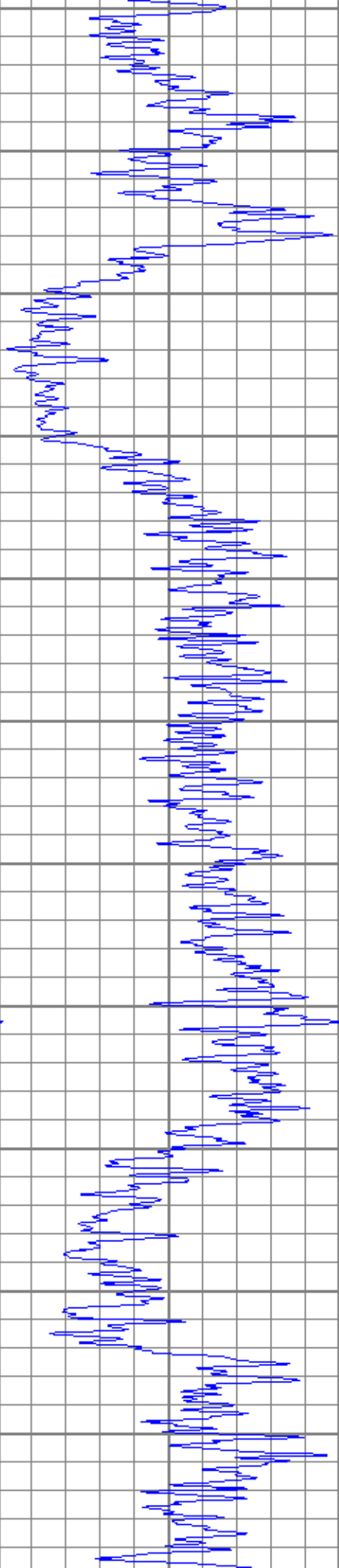


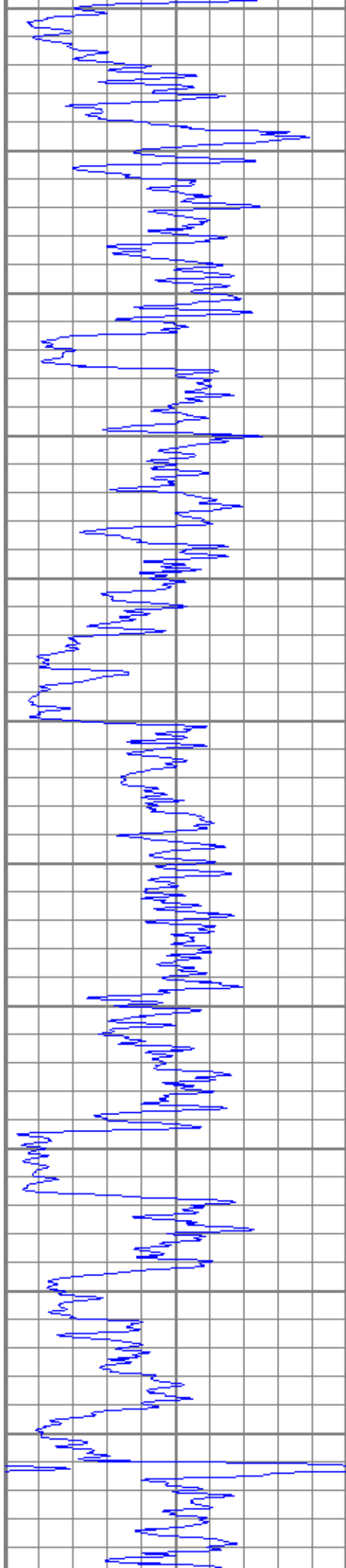
MAIN PASS

Database File kostevenson #1-10.db
 Dataset Pathname pass2.1
 Presentation Format kdi11inn
 Dataset Creation Wed Sep 19 11:14:14 2018
 Charted by Depth in Feet scaled 1:600

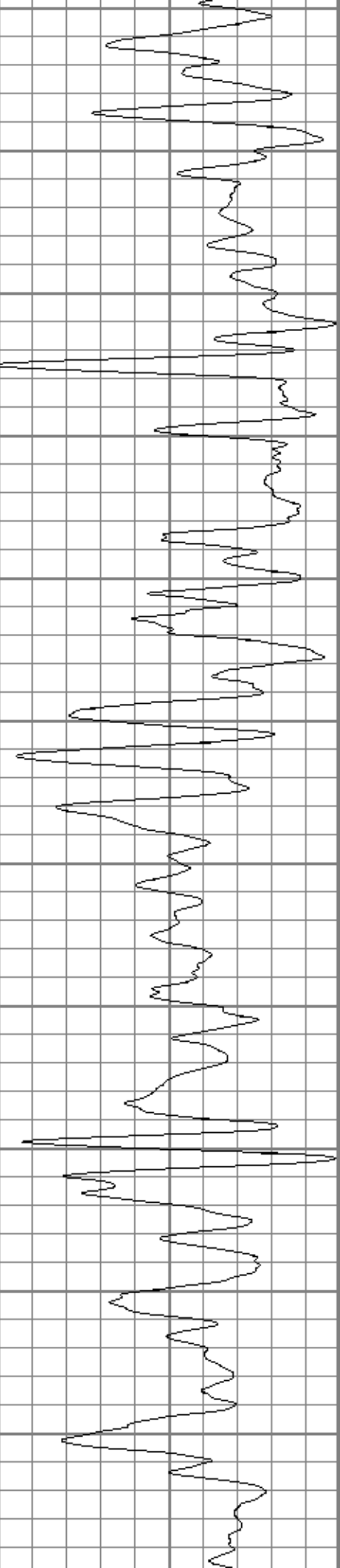
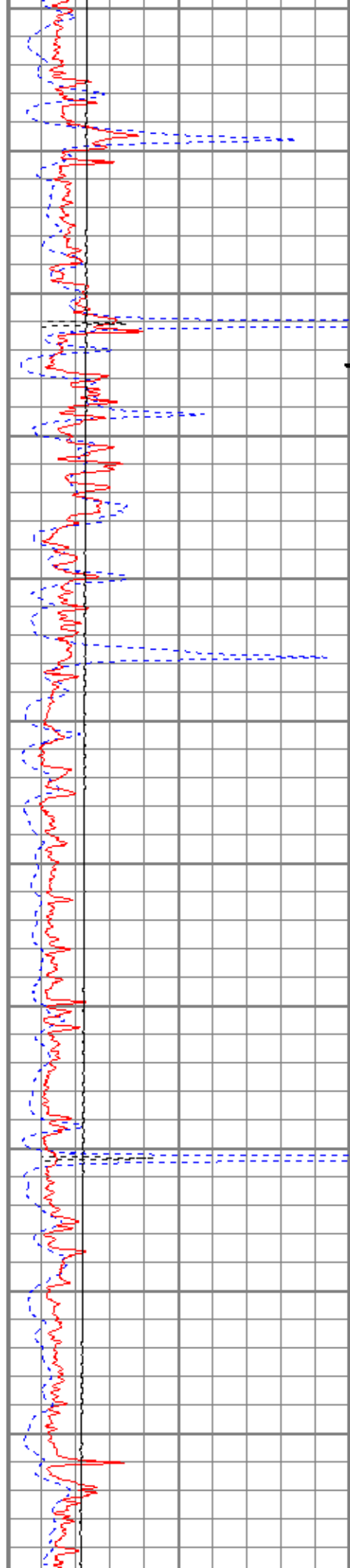
0	GR (GAPI)	150	1000	CILD (mmho/m)	0
			10000	LTEN (lb)	0
0	RILD (Ohm-m)	50			
0	RLL3 (Ohm-m)	50			
50	RILD x 10 (Ohm-m)	500			
50	RLL3 x 10 (Ohm-m)	500			

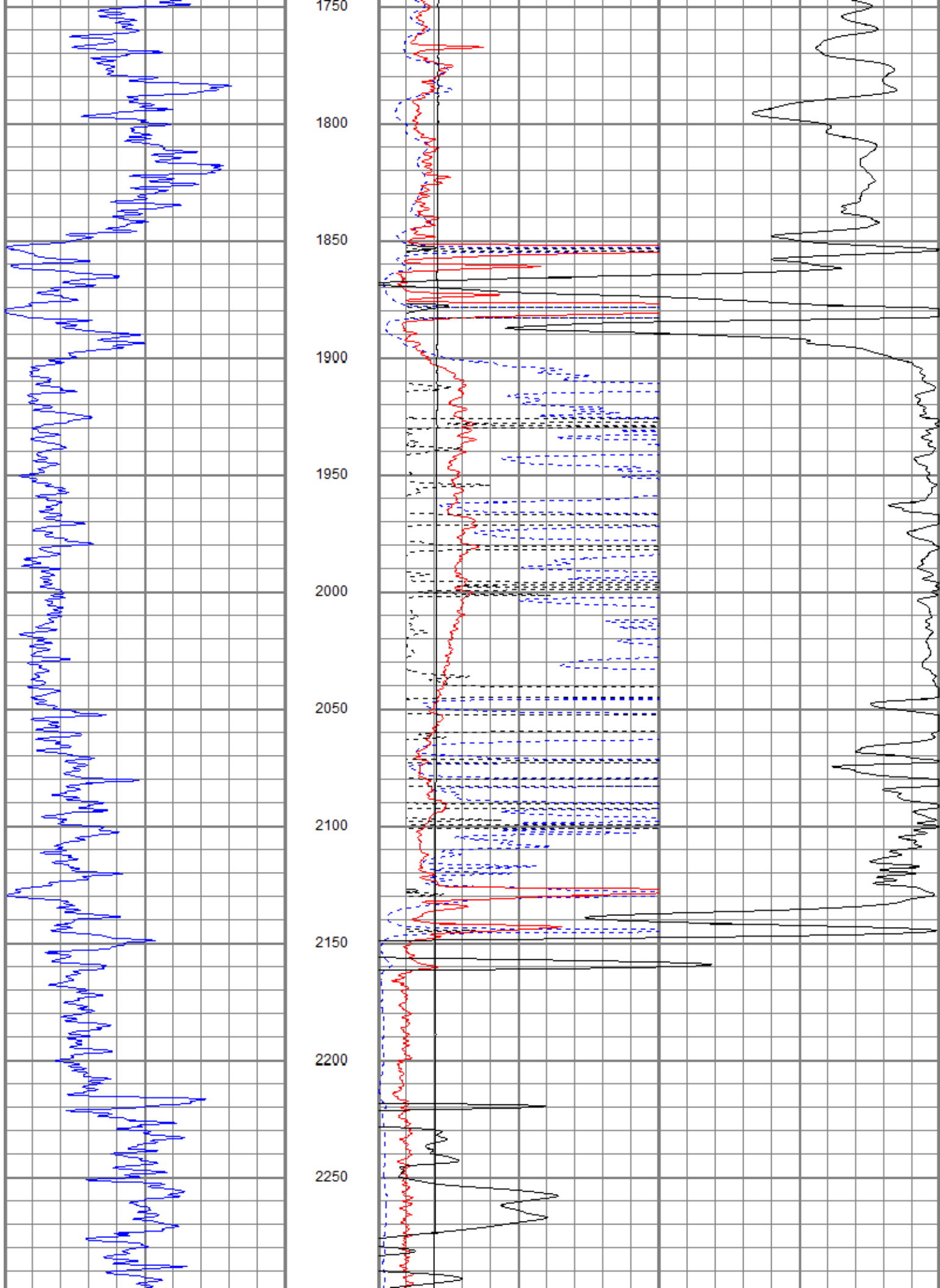


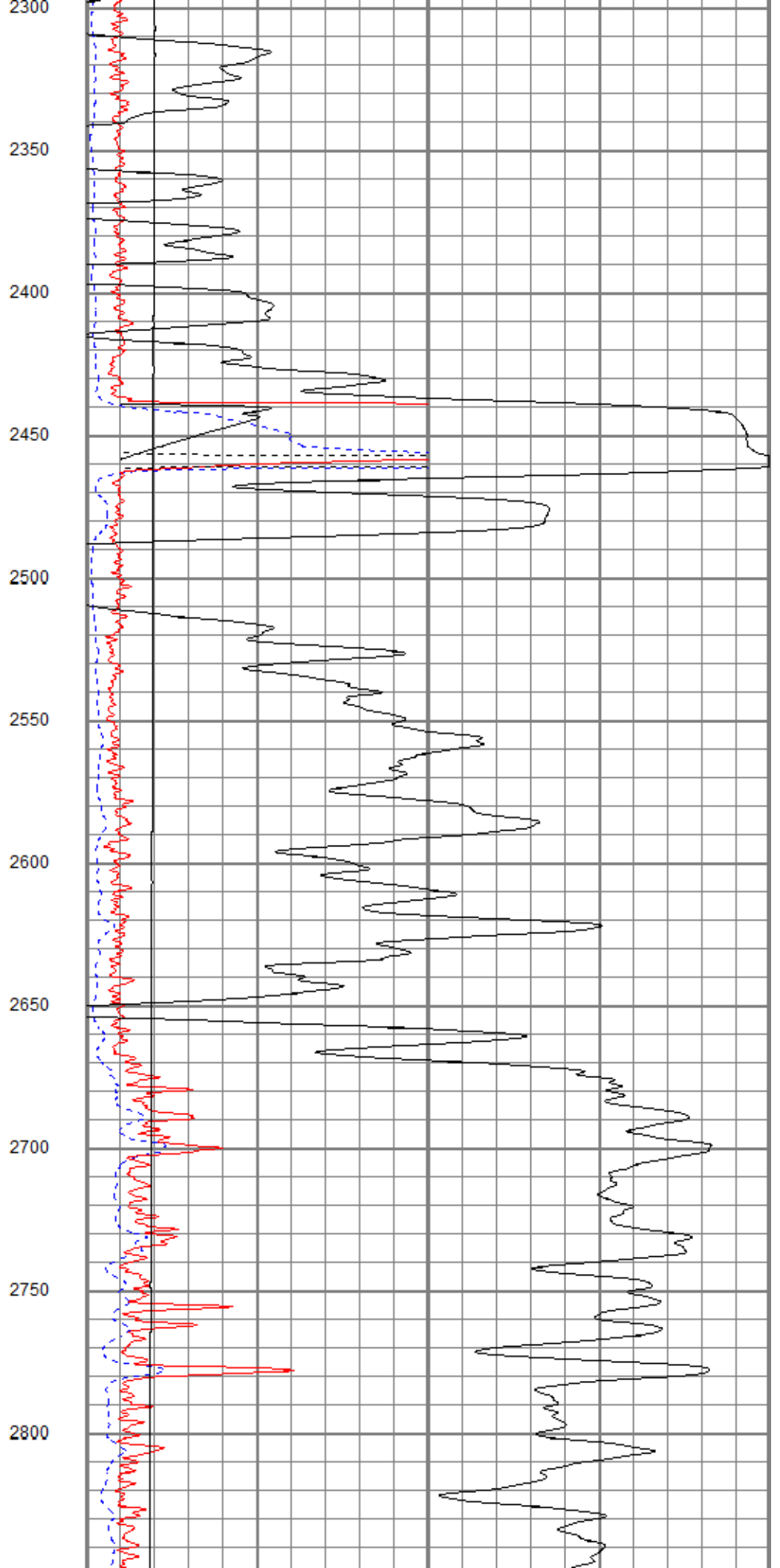
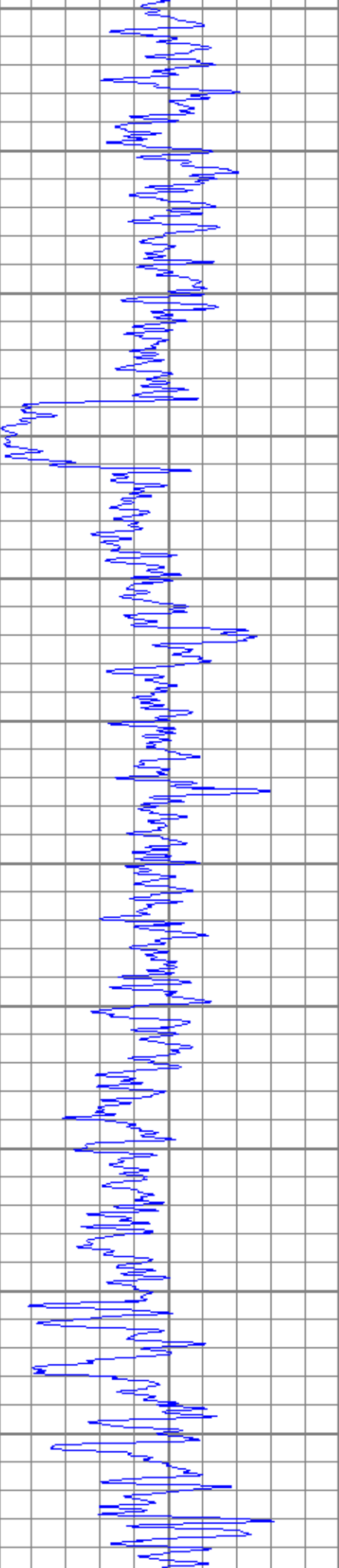


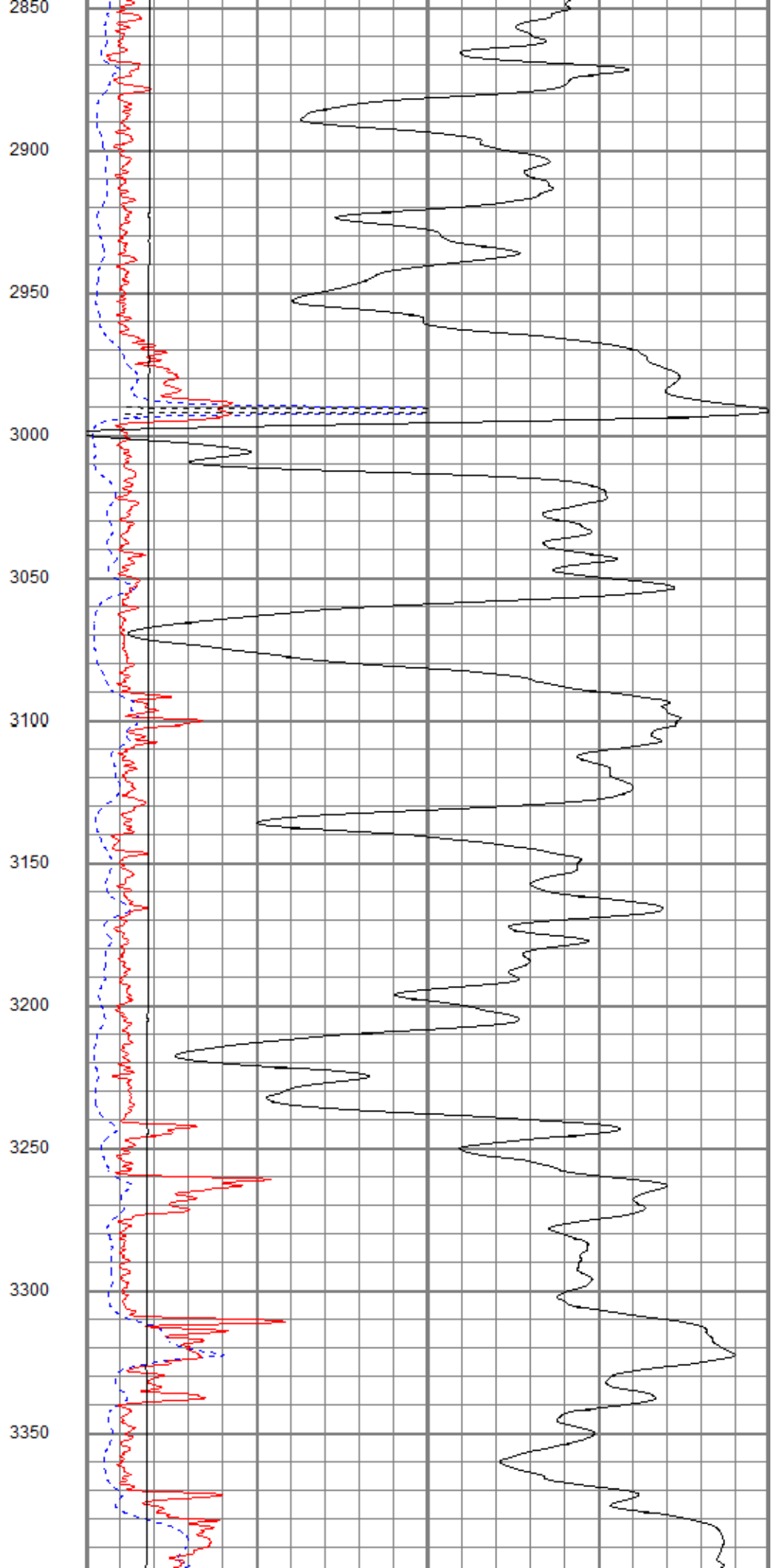
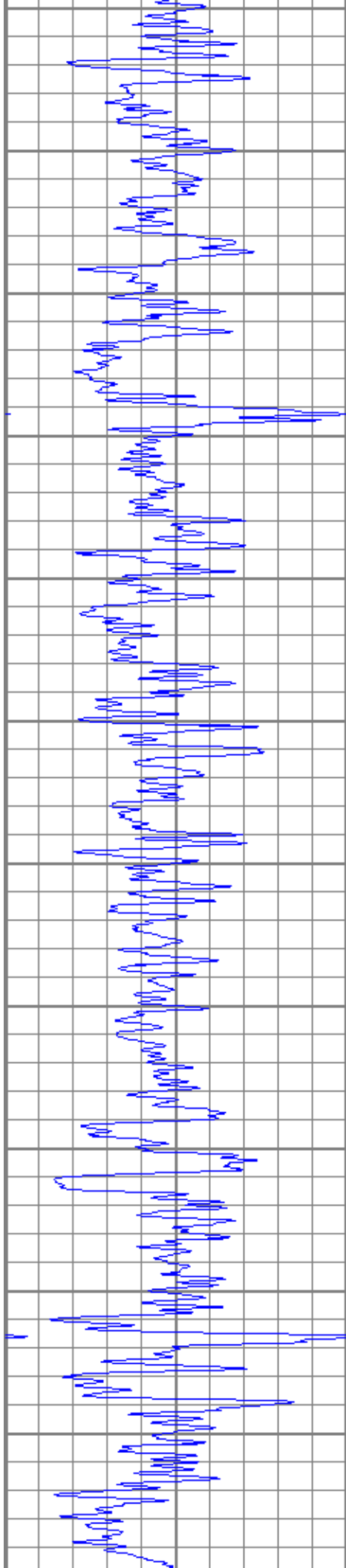


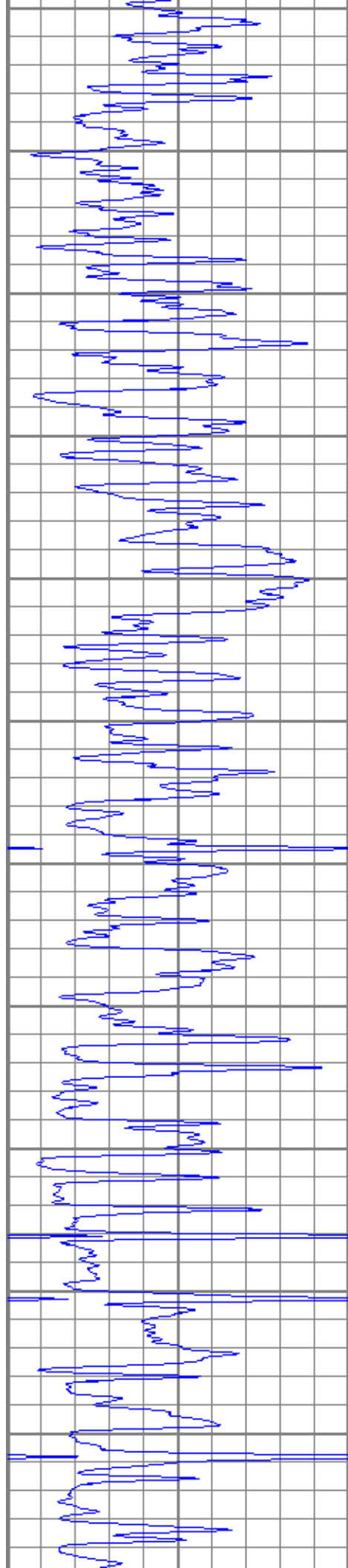
1200
1250
1300
1350
1400
1450
1500
1550
1600
1650
1700



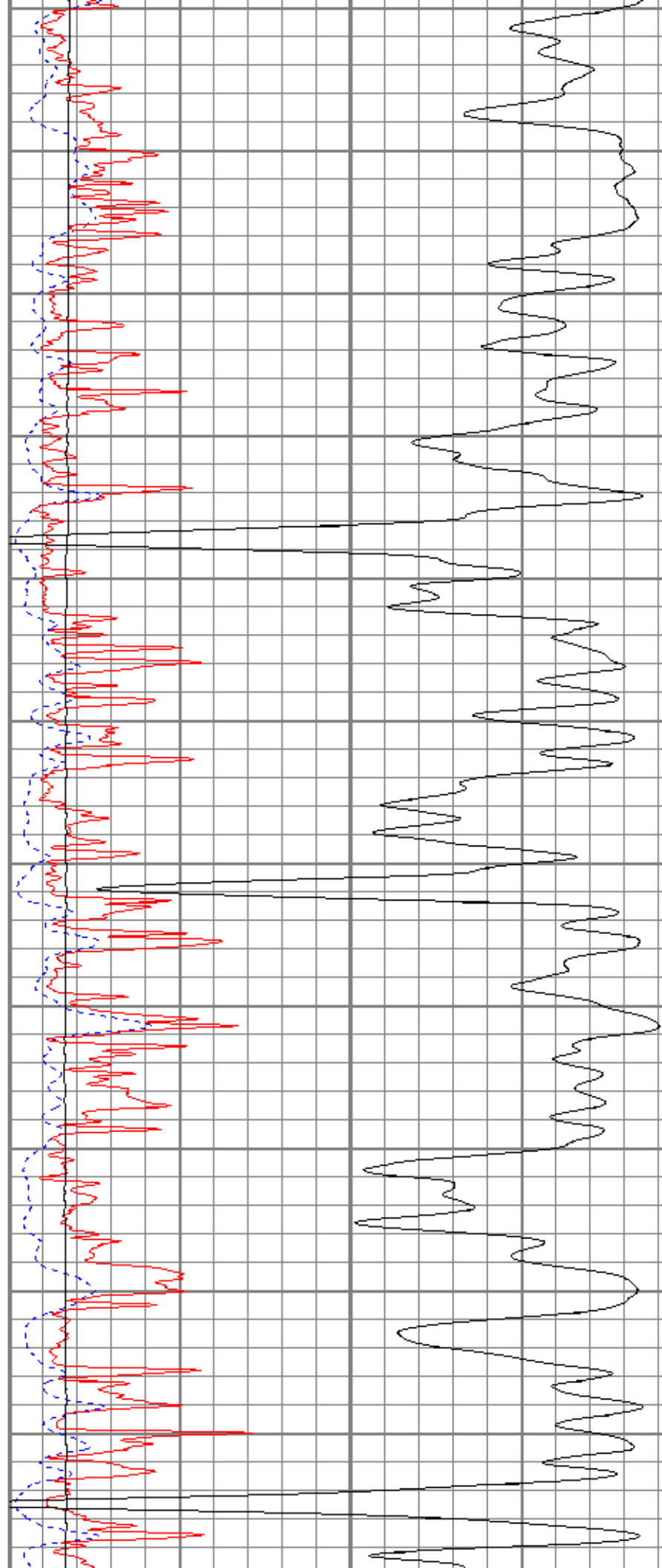


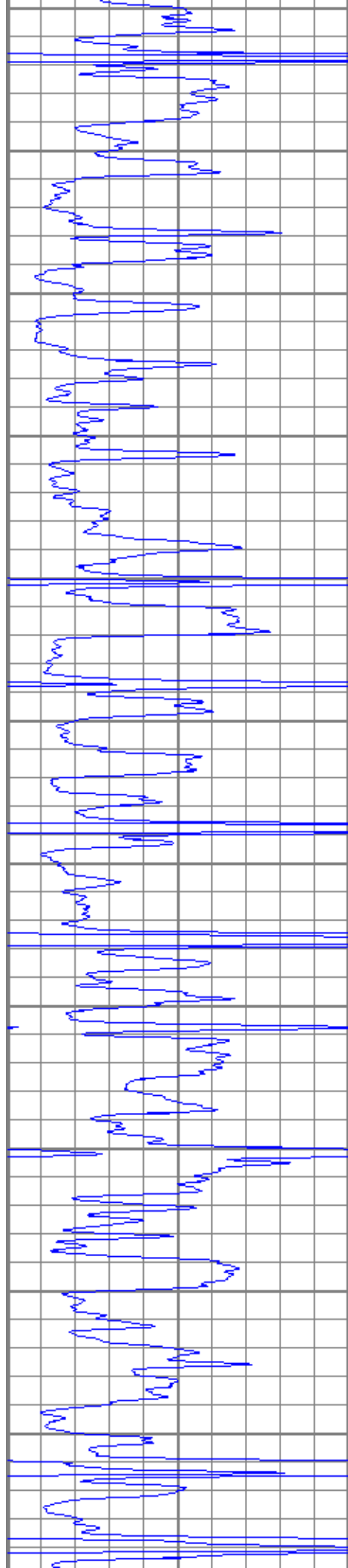




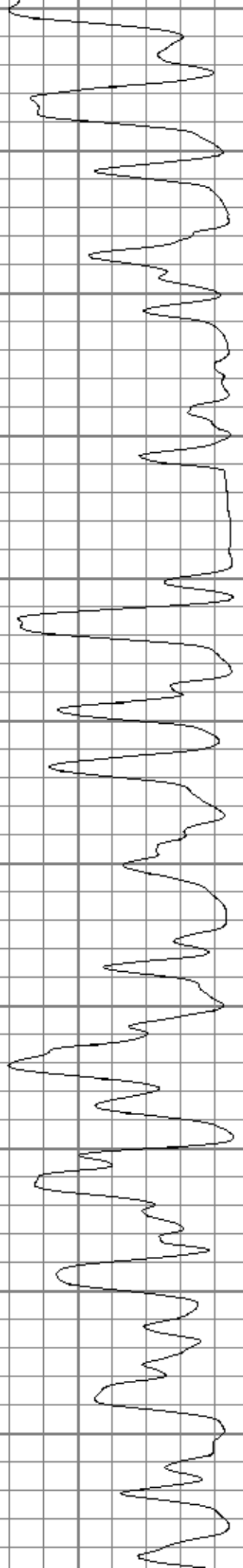
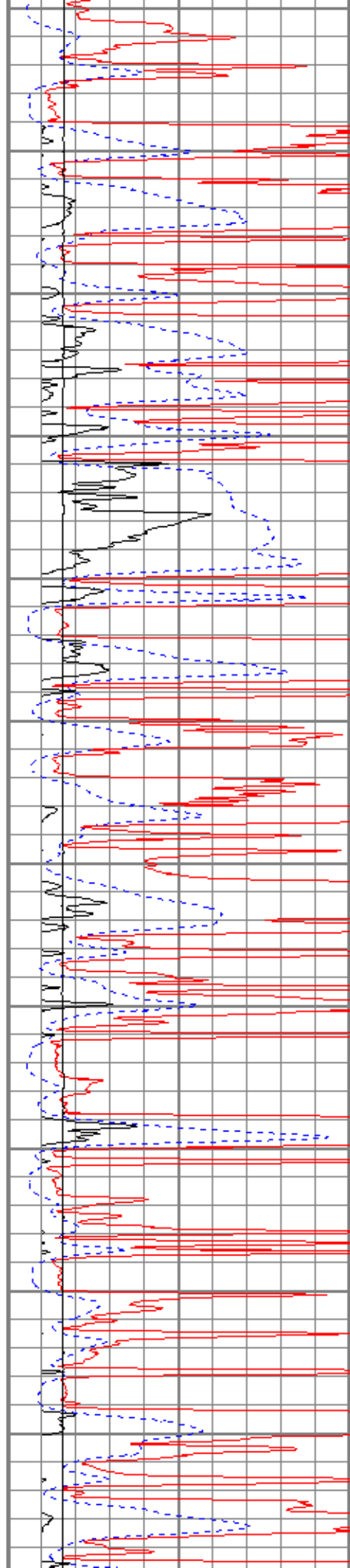


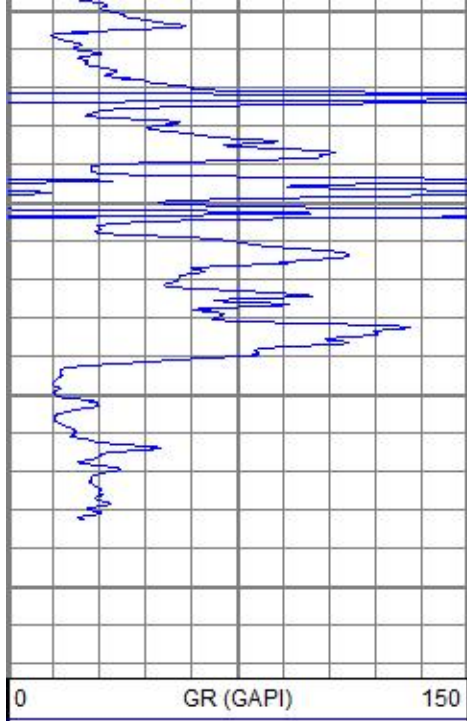
3400
3450
3500
3550
3600
3650
3700
3750
3800
3850
3900





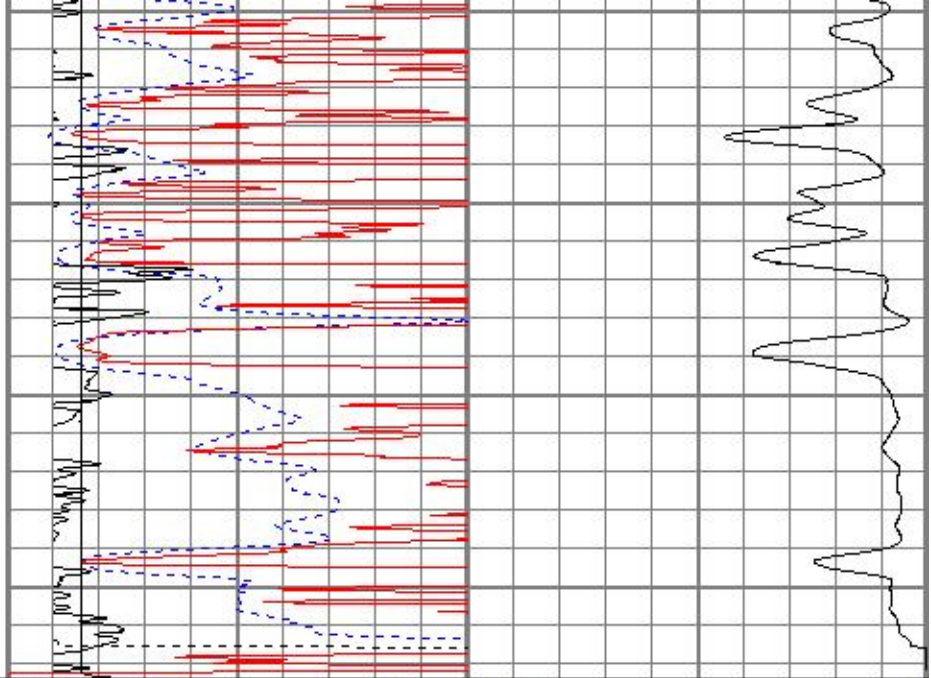
3950
4000
4050
4100
4150
4200
4250
4300
4350
4400
4450





4500
4550
4600
4650

0 GR (GAPI) 150



1000	CILD (mmho/m)	0
10000	LTEN (lb)	0
0	RILD (Ohm-m)	50
0	RLL3 (Ohm-m)	50
50	RILD x 10 (Ohm-m)	500
50	RLL3 x 10 (Ohm-m)	500

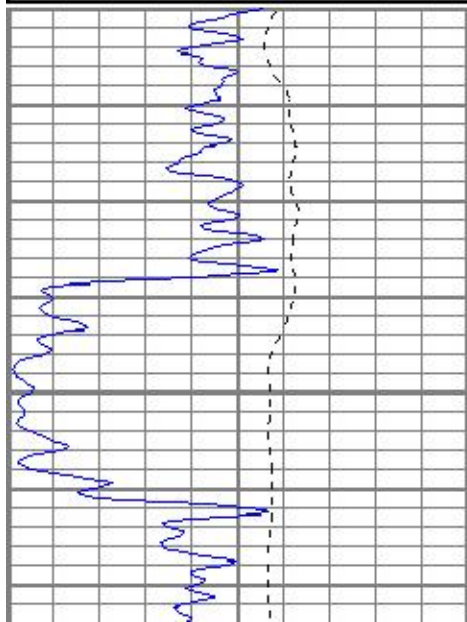


MAIN PASS

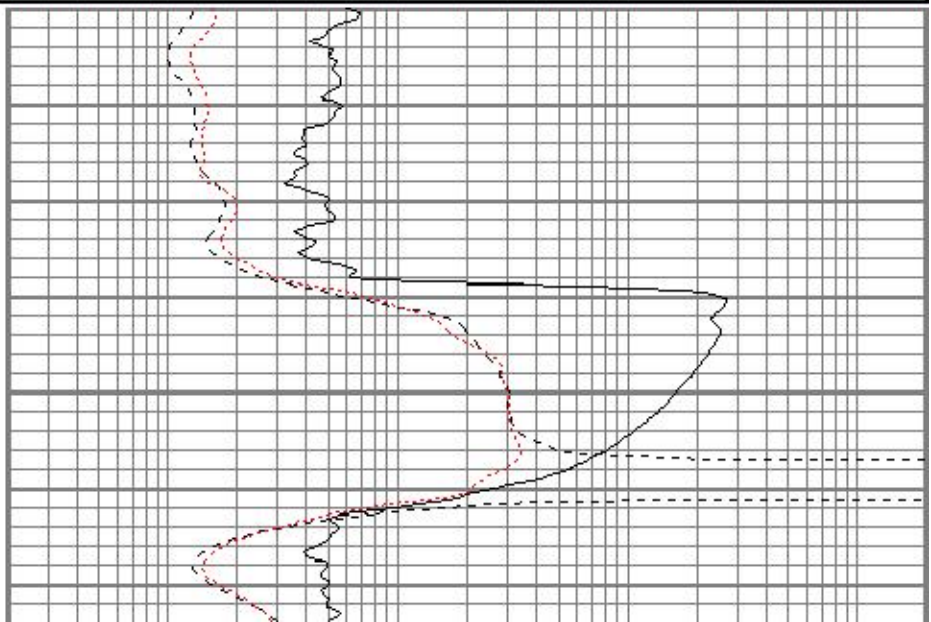
Database File kostevenson #1-10.db
 Dataset Pathname pass2.1
 Presentation Format kdil
 Dataset Creation Wed Sep 19 11:14:14 2018
 Charted by Depth in Feet scaled 1:240

0	GR (GAPI)	150
-100	SP (mV)	100

0.2	RILD (Ohm-m)	2000
0.2	RLL3 (Ohm-m)	2000
0.2	RILM (Ohm-m)	2000



2450



0	GR (GAPI)	150
-100	SP (mV)	100

0.2	RILD (Ohm-m)	2000
0.2	RLL3 (Ohm-m)	2000
0.2	RILM (Ohm-m)	2000

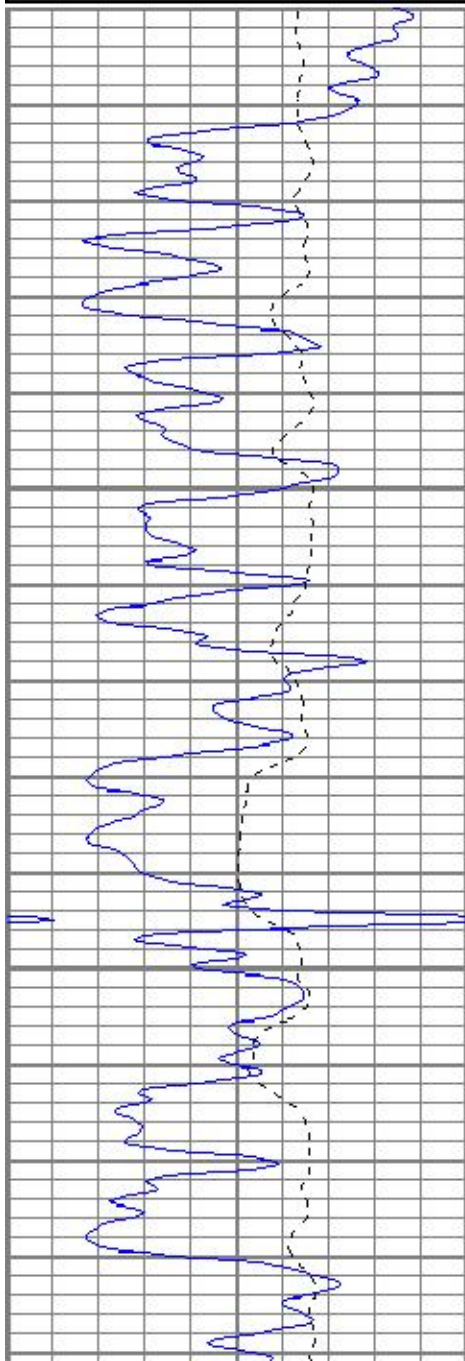


MAIN PASS

Database File kostevenson #1-10.db
 Dataset Pathname pass2.1
 Presentation Format kdil
 Dataset Creation Wed Sep 19 11:14:14 2018
 Charted by Depth in Feet scaled 1:240

0	GR (GAPI)	150
-100	SP (mV)	100

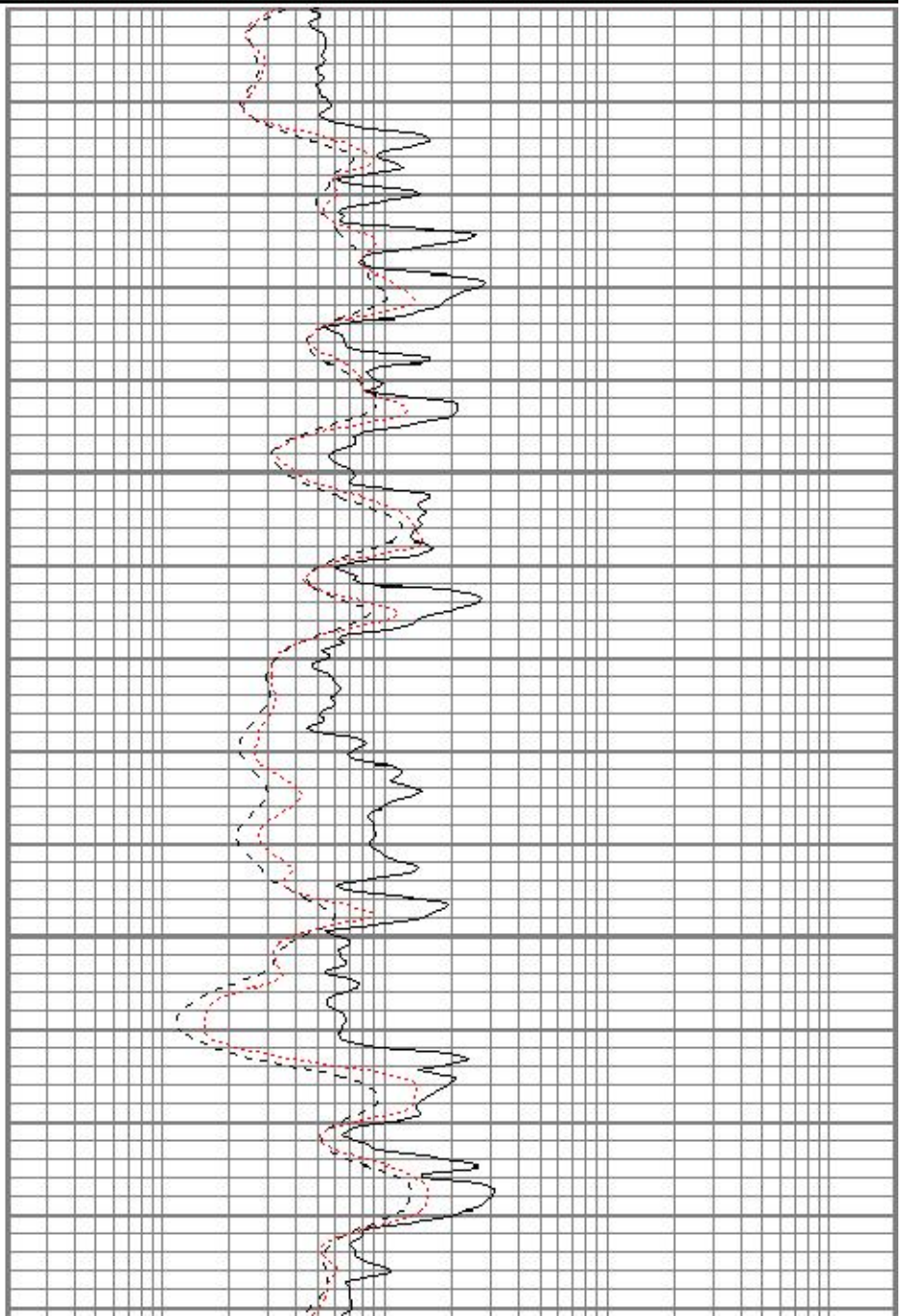
0.2	RILD (Ohm-m)	2000
0.2	RLL3 (Ohm-m)	2000
0.2	RILM (Ohm-m)	2000

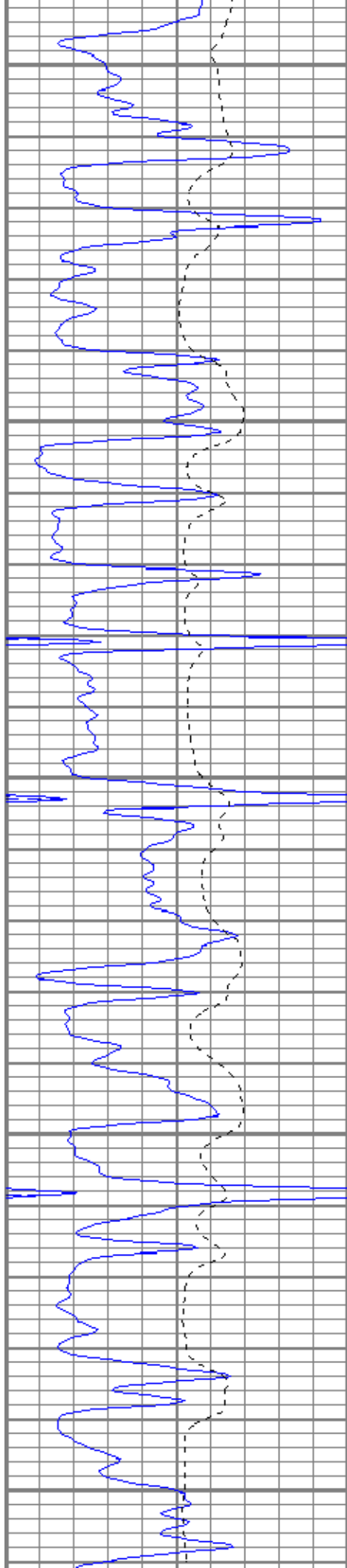


3600

3650

3700





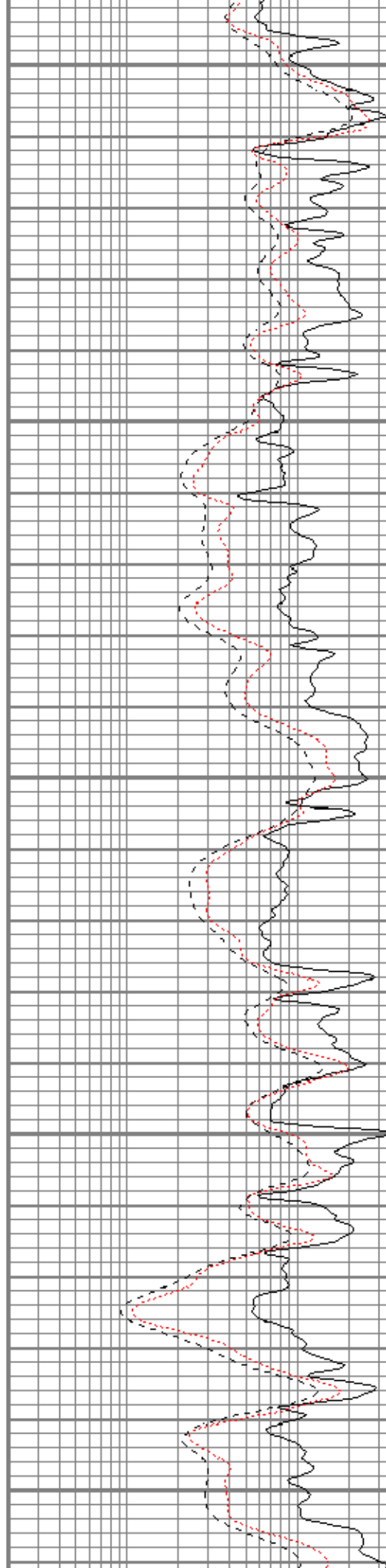
3750

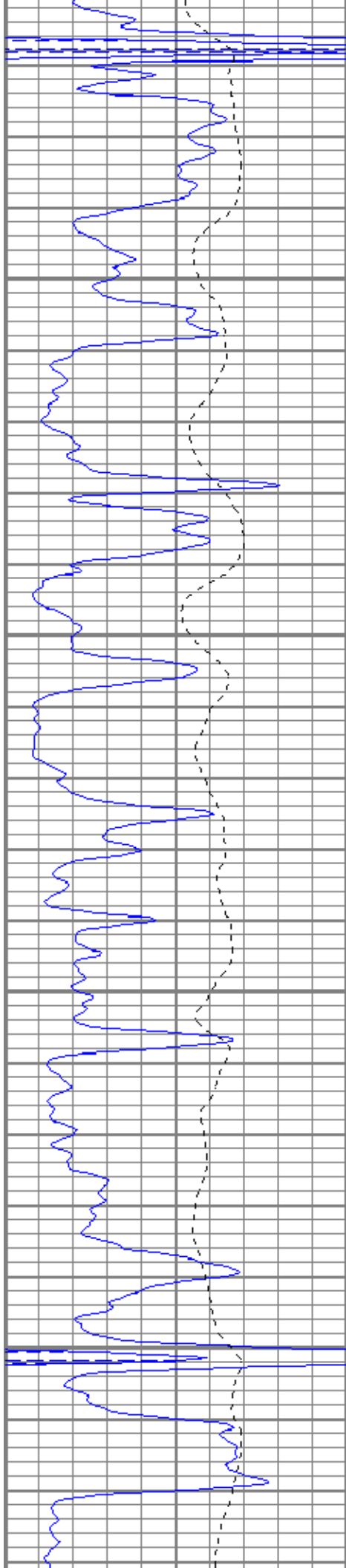
3800

3850

3900

3950



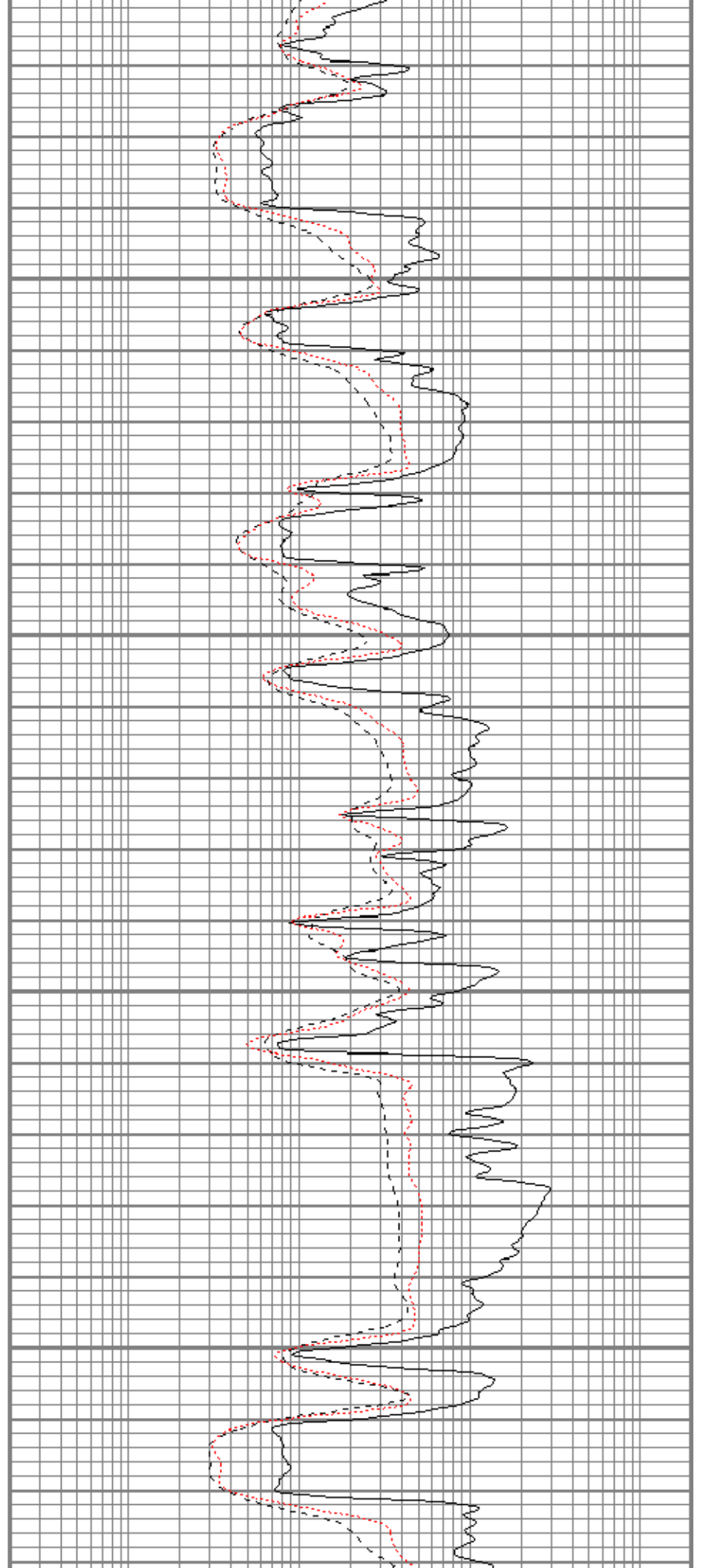


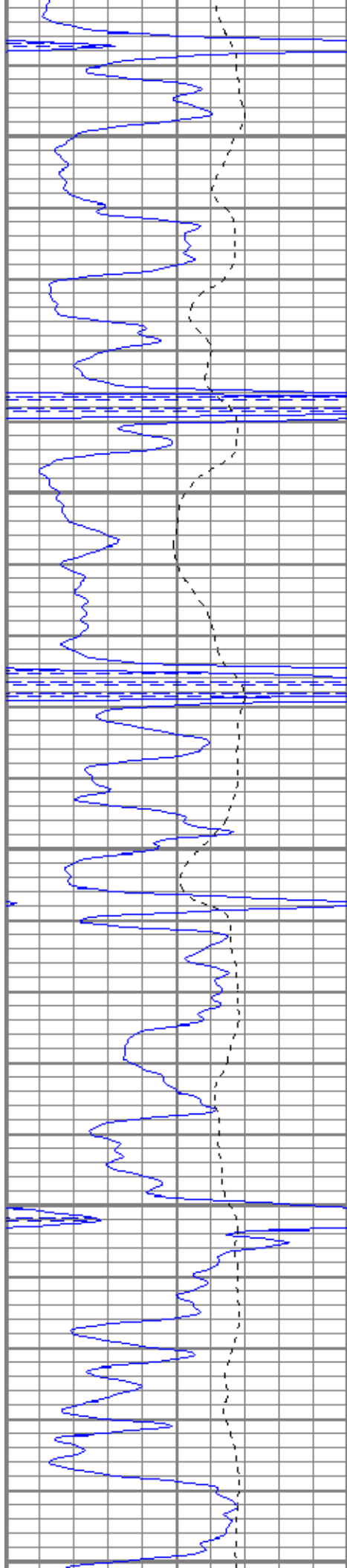
4000

4050

4100

4150





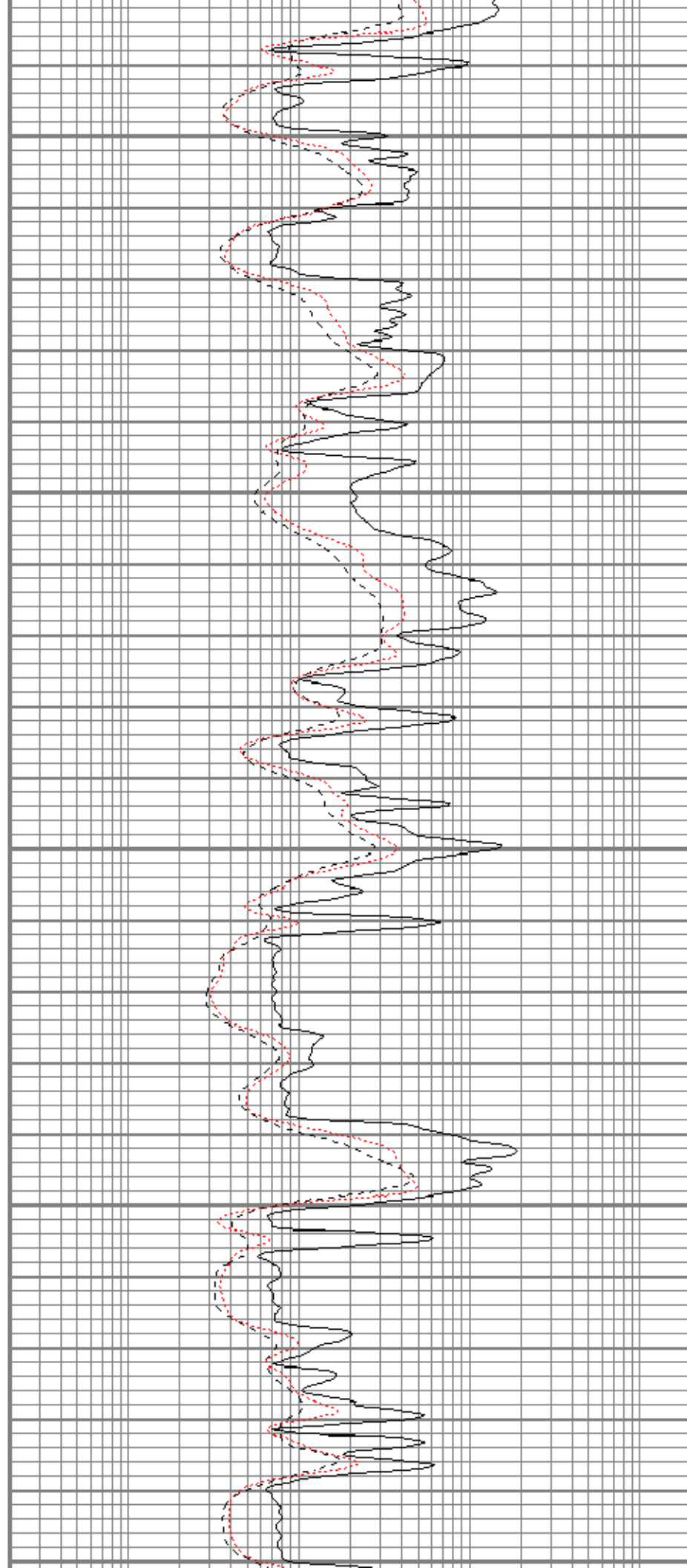
4200

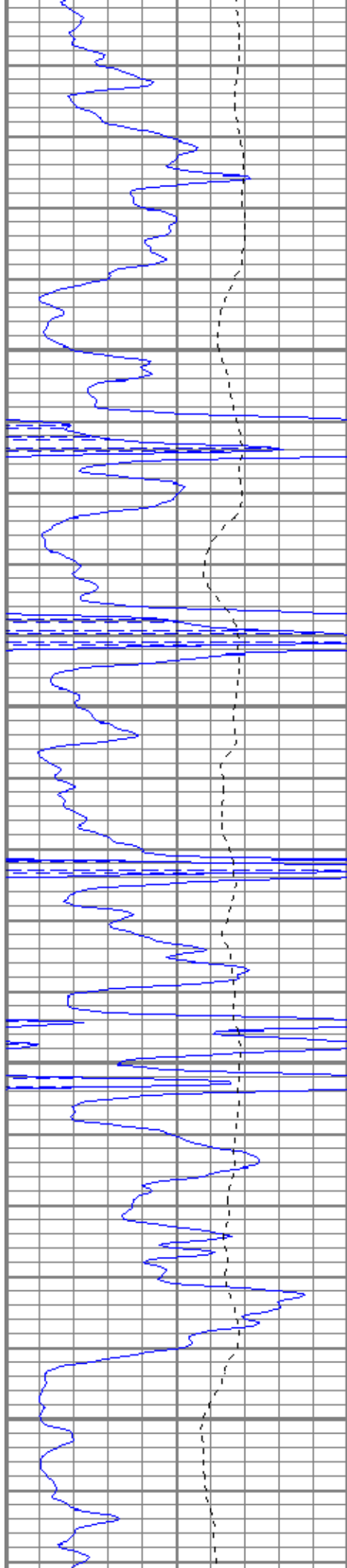
4250

4300

4350

4400



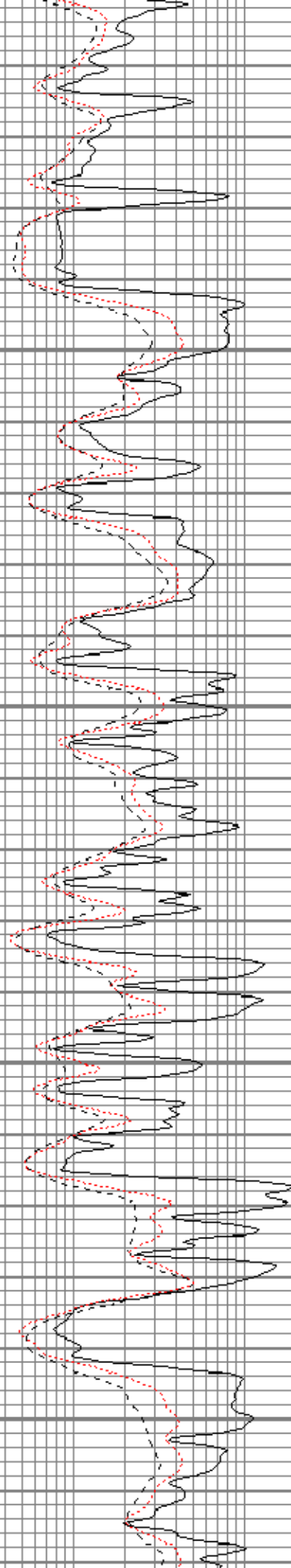


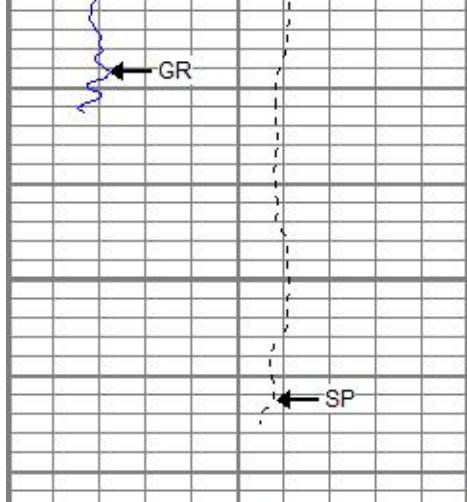
4450

4500

4550

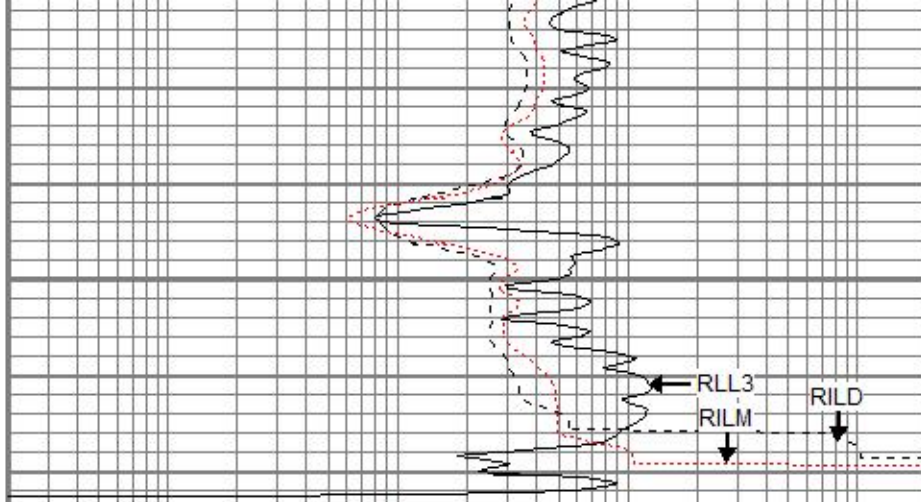
4600





4650

0	GR (GAPI)	150
-100	SP (mV)	100



0.2	RILD (Ohm-m)	2000
0.2	RLL3 (Ohm-m)	2000
0.2	RILM (Ohm-m)	2000

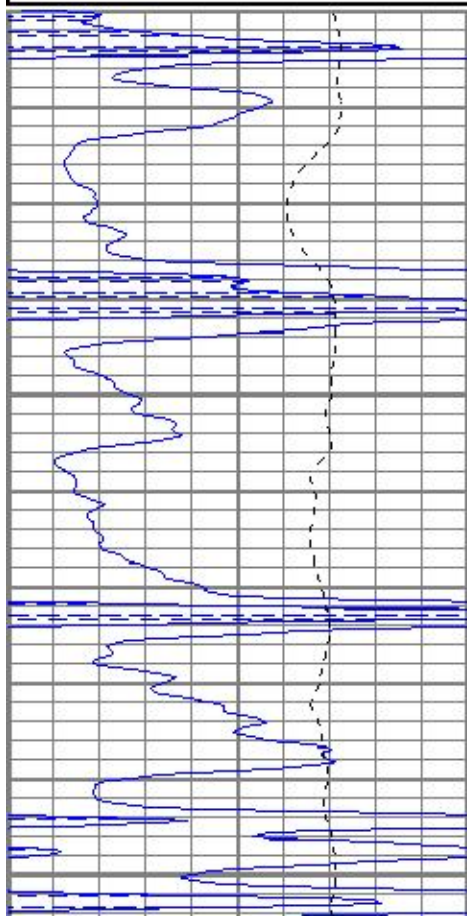


REPEAT SECTION

Database File kostevenson #1-10.db
 Dataset Pathname pass1.1
 Presentation Format kdil
 Dataset Creation Wed Sep 19 10:30:49 2018
 Charted by Depth in Feet scaled 1:240

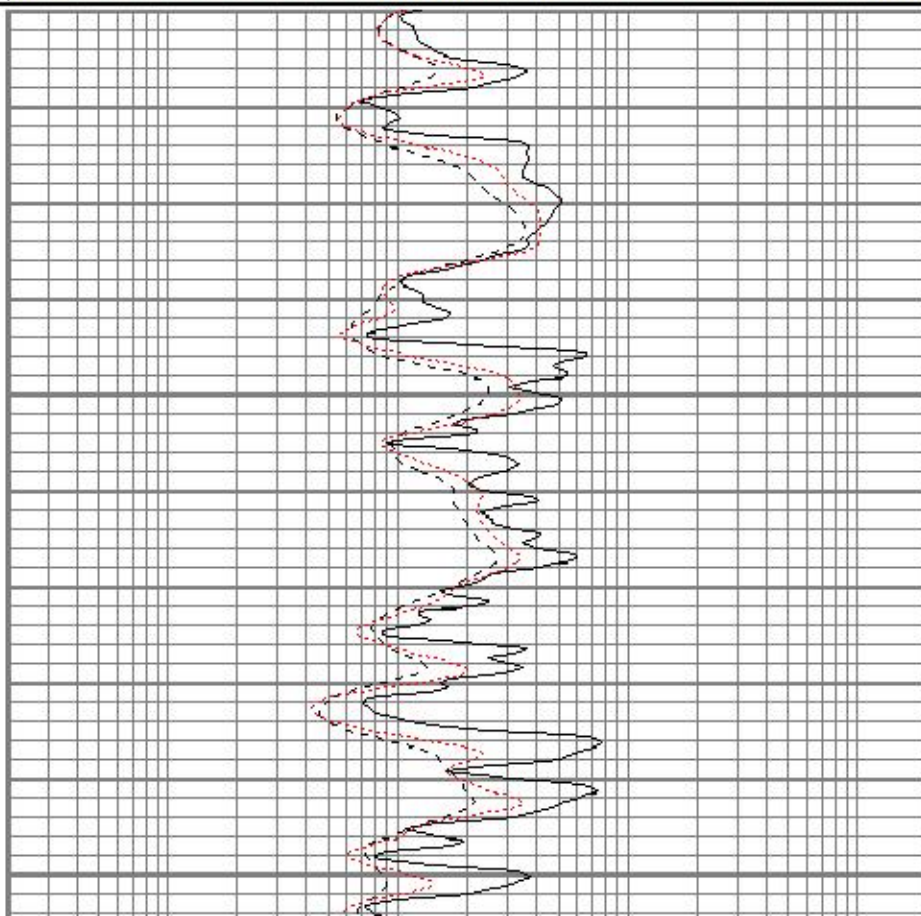
0	GR (GAPI)	150
-100	SP (mV)	100

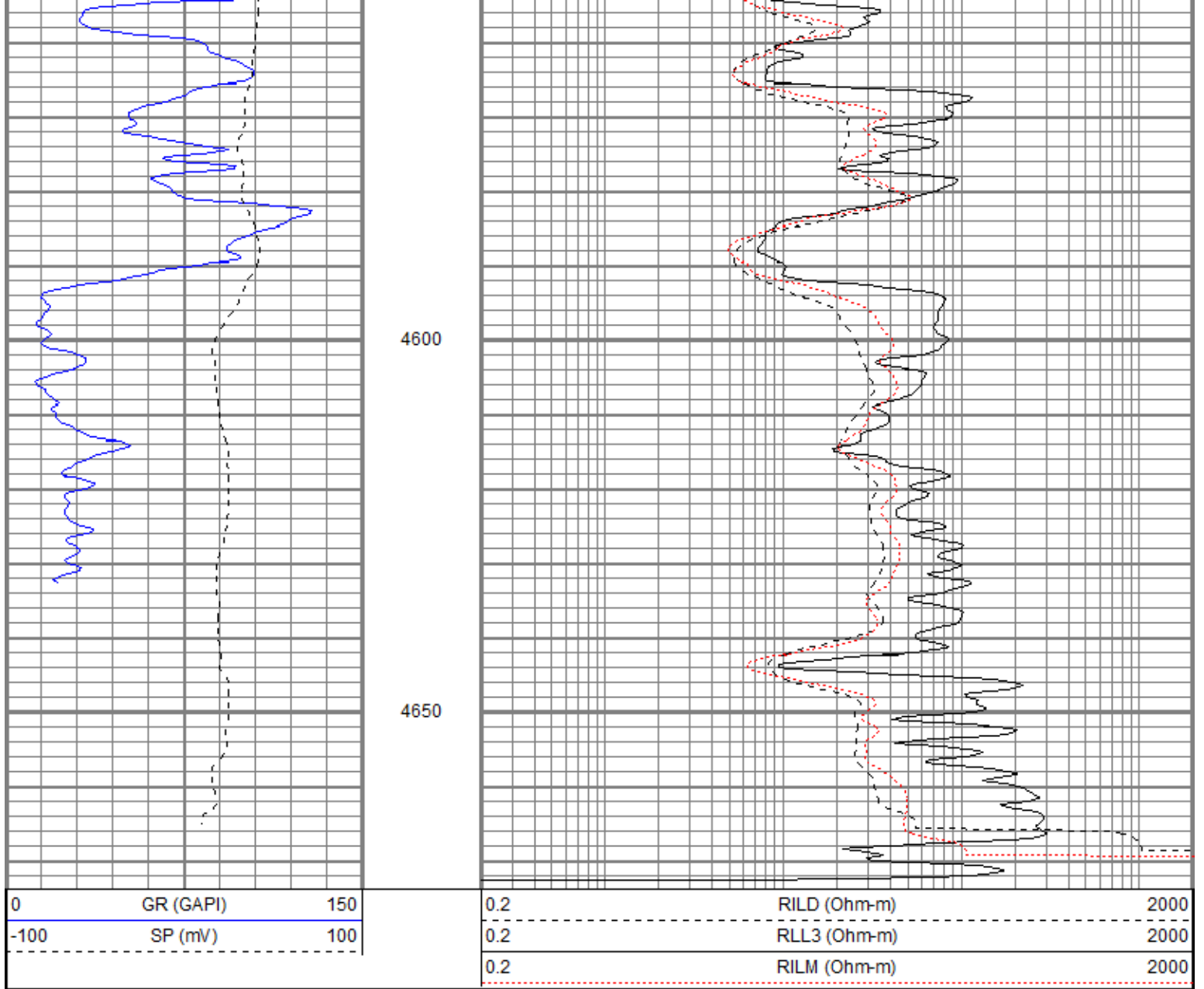
0.2	RILD (Ohm-m)	2000
0.2	RLL3 (Ohm-m)	2000
0.2	RILM (Ohm-m)	2000



4500

4550





Calibration Report

Database File kostevenson #1-10.db
 Dataset Pathname pass2.1
 Dataset Creation Wed Sep 19 11:14:14 2018

Dual Induction Calibration Report

Serial-Model: 1989-ADM
 Surface Cal Performed: Wed Jun 06 19:34:10 2018
 Downhole Cal Performed: Wed Jun 06 19:34:10 2018
 After Survey Verification Performed: Wed Jun 06 19:34:10 2018

Surface Calibration

Loop:	Readings			References			Results	
	Air	Loop		Air	Loop		m	b
Deep	-0.012	0.665	V	0.000	350.000	mmho/m	516.748	6.134
Medium	-0.013	0.752	V	0.000	400.000	mmho/m	522.482	6.987
Internal:	Zero	Cal		Zero	Cal		m	b
Deep	-0.011	0.668	V	0.000	350.000	mmho/m	515.730	5.704
Medium	-0.015	0.752	V	0.000	550.000	mmho/m	716.653	10.787

Downhole Calibration

Downhole Calibration

Internal:	Readings			References			Results	
	Zero	Cal		Zero	Cal		m	b
Deep	0.000	0.000	mmho/m	0.419	351.110	mmho/m	1.000	0.000
Medium	0.000	0.000	mmho/m	-0.877	400.105	mmho/m	1.000	0.000
Shallow	2.502	0.040	V	500.000	2.000	Ohm-m	195.000	-2.626

After Survey Verification								
Internal:	Readings			Targets			Results	
	Zero	Cal		Zero	Cal		m'	b'
Deep	0.000	0.000	mmho/m	0.000	0.000	mmho/m	1.000	0.000
Medium	0.000	0.000	mmho/m	0.000	0.000	mmho/m	1.000	0.000
Shallow	0.000	0.000	Ohm-m	500.000	2.000	Ohm-m	1.000	0.000

Neutron Calibration Report

Serial Number: ADM5139
 Tool Model: lithogearhart
 Performed: (Not Performed)

Calibrator Value: 1 NAPI
 Calibrator Reading: 1 cps
 Sensitivity: 1 NAPI/cps

Temperature Calibration Report

Serial Number: WithMC
 Tool Model: WMC
 Performed: (Not Performed)

	Reference	Reading
Low Reference:	0.00 degF	0.00 degF
High Reference:	1.00 degF	1.00 degF

Gain: 1.00
 Offset: 0.00
 Delta Spacing: 1

Inclinometer Calibration Report

Performed: Mon Aug 07 11:02:07 2017

	Low Read.	High Read.	Low Ref.	High Ref.	
X Accelerometer	205.00	1843.00	-1.00	1.00	gee
Y Accelerometer	205.00	1843.00	-1.00	1.00	gee
Z Accelerometer					gee

Gamma Ray Calibration Report

Serial Number: WithMC
 Tool Model: WMC
 Performed: Mon Aug 07 11:03:41 2017

Calibrator Value: 1.0 GAPI
 Background Reading: 0.0 cps

Calibrator Reading:

1.0

cps

Sensitivity:

0.9000

GAPI/cps

Sensor	Offset (ft)	Schematic	Description	Length (ft)	O.D. (in)	Weight (lb)	
			CHD-STD	0.50	1.69	1.00	
GR	38.71						
ACCY	37.54			ADT-WMC (WithMC) Admyr Telemetry With Mudcell	4.58	3.50	120.00
ACCX	37.54						
SSTAT	37.13						
PSTAT	36.29						
ASTAT	36.29			NEU-lithogearhart (ADM5139)	5.65	3.50	85.00
GRD	35.46						
TEMP	35.46						
NEU	32.09						
				CDL-GEARHART (2501)	9.69	4.00	240.00
LSD	22.02						
DCAL	21.73						
SSD	21.48						
				DIL-ADM (1989) Dual Induction	19.71	4.00	300.00
SP	10.60						
CILD	10.60						
CILM	6.89						
RLL3	1.70						

Dataset: kostevenson #1-10.db: field/well/run1/pass2.1
 Total length: 40.13 ft
 Total weight: 746.00 lb
 O.D.: 4.00 in