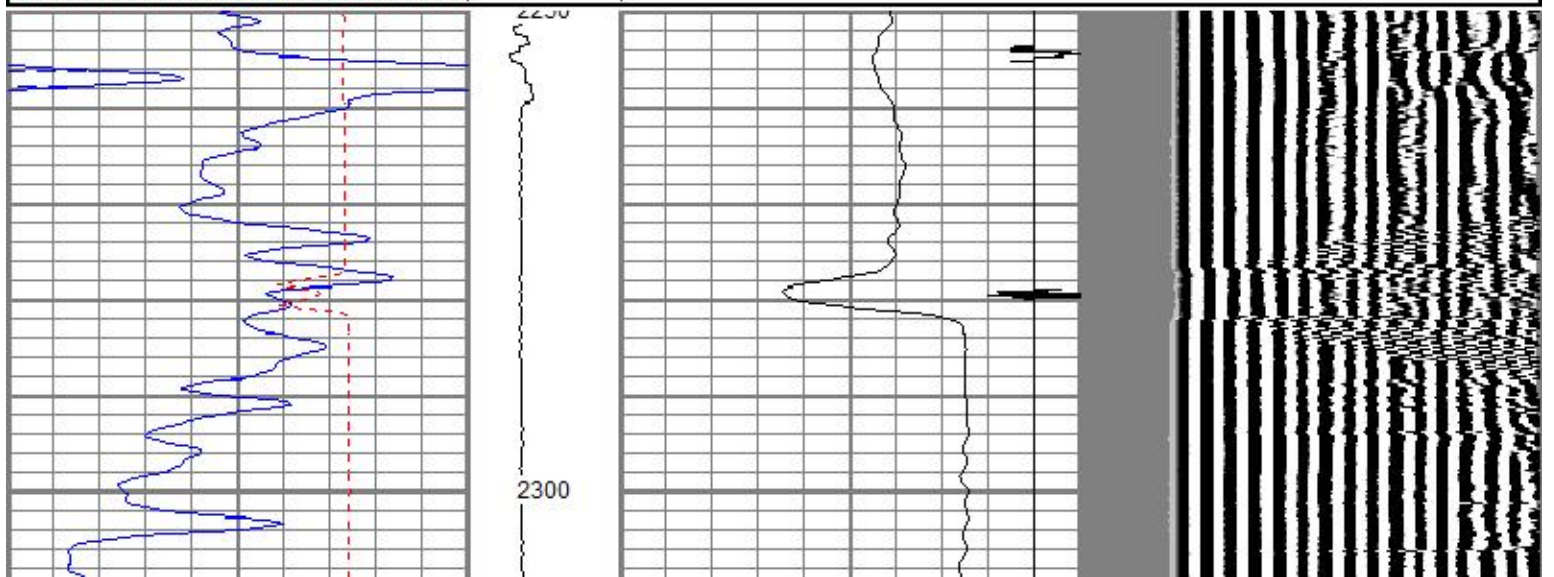
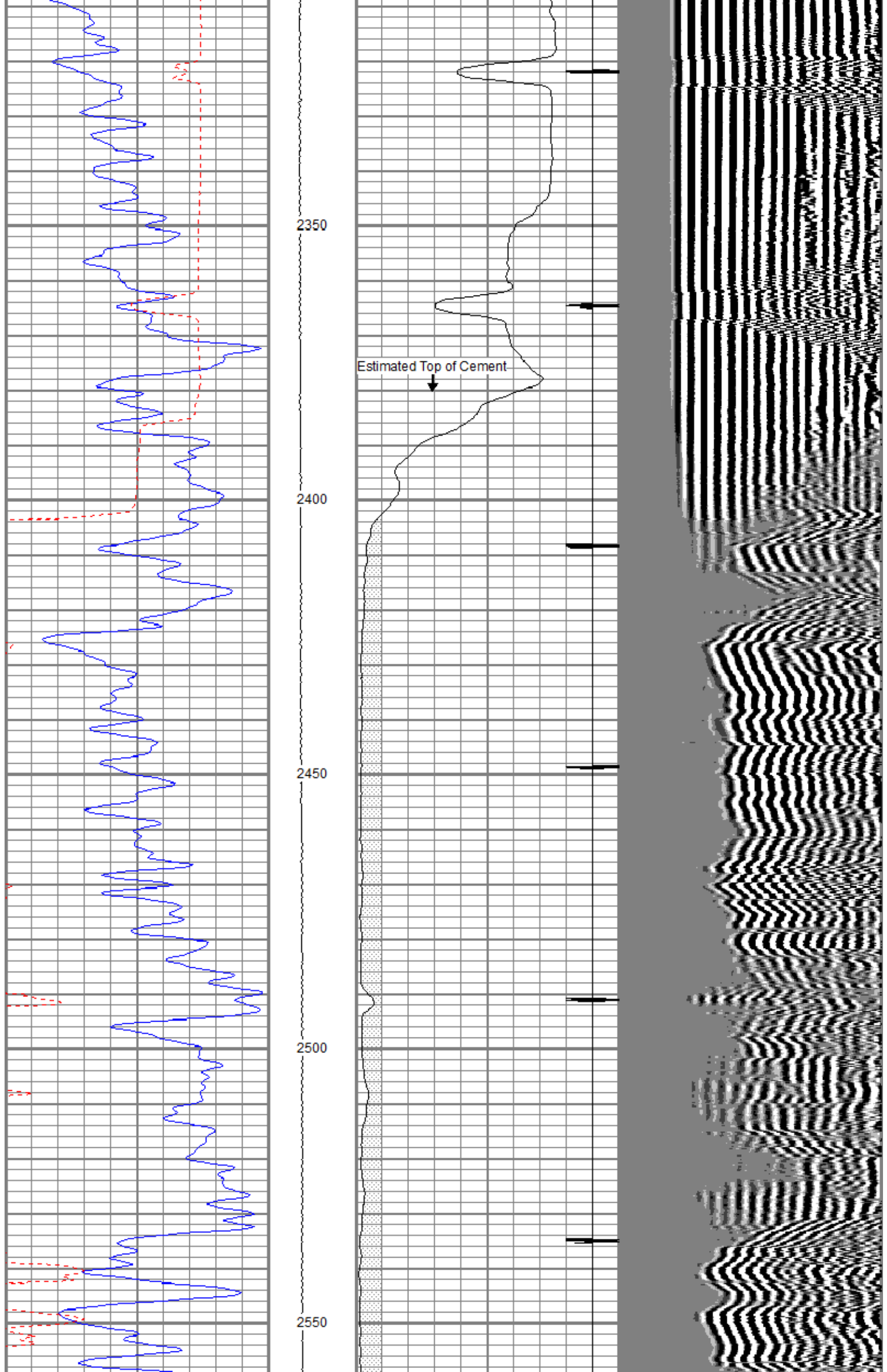


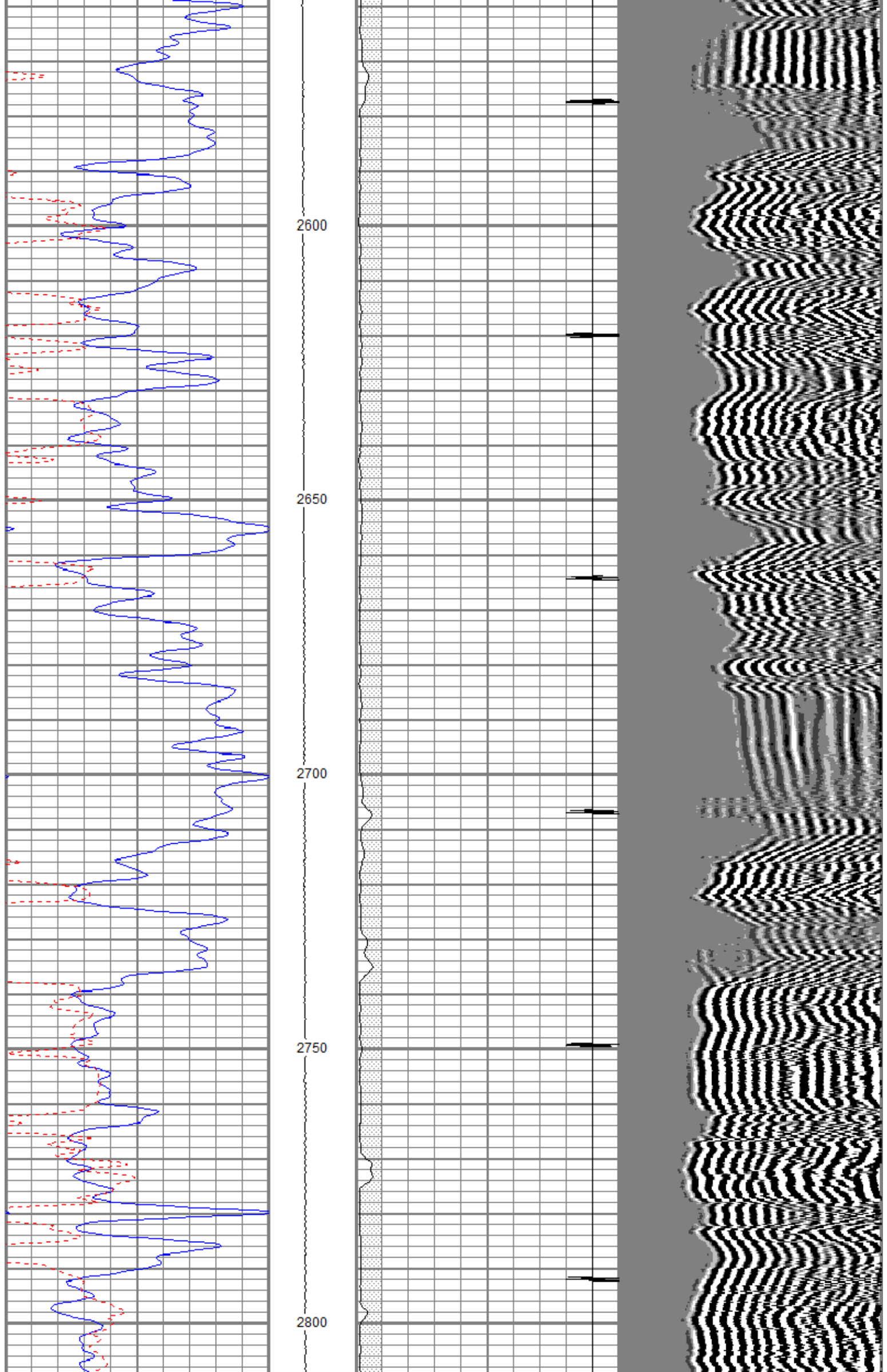
MAIN PASS

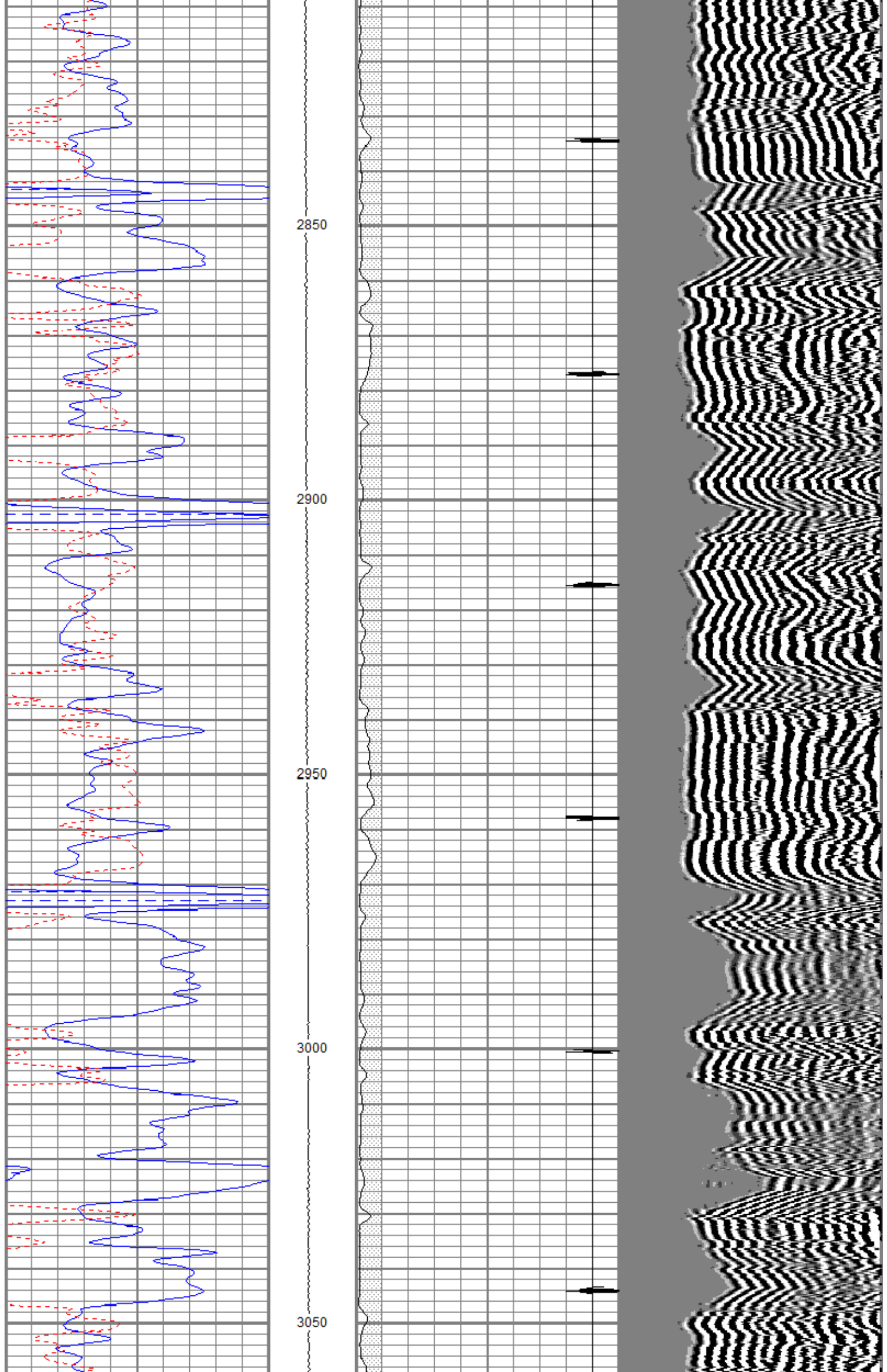
Database File oacress#7cbl.db
 Dataset Pathname pass2
 Presentation Format cblsec
 Dataset Creation Tue Jul 03 08:52:11 2018
 Charted by Depth in Feet scaled 1:240

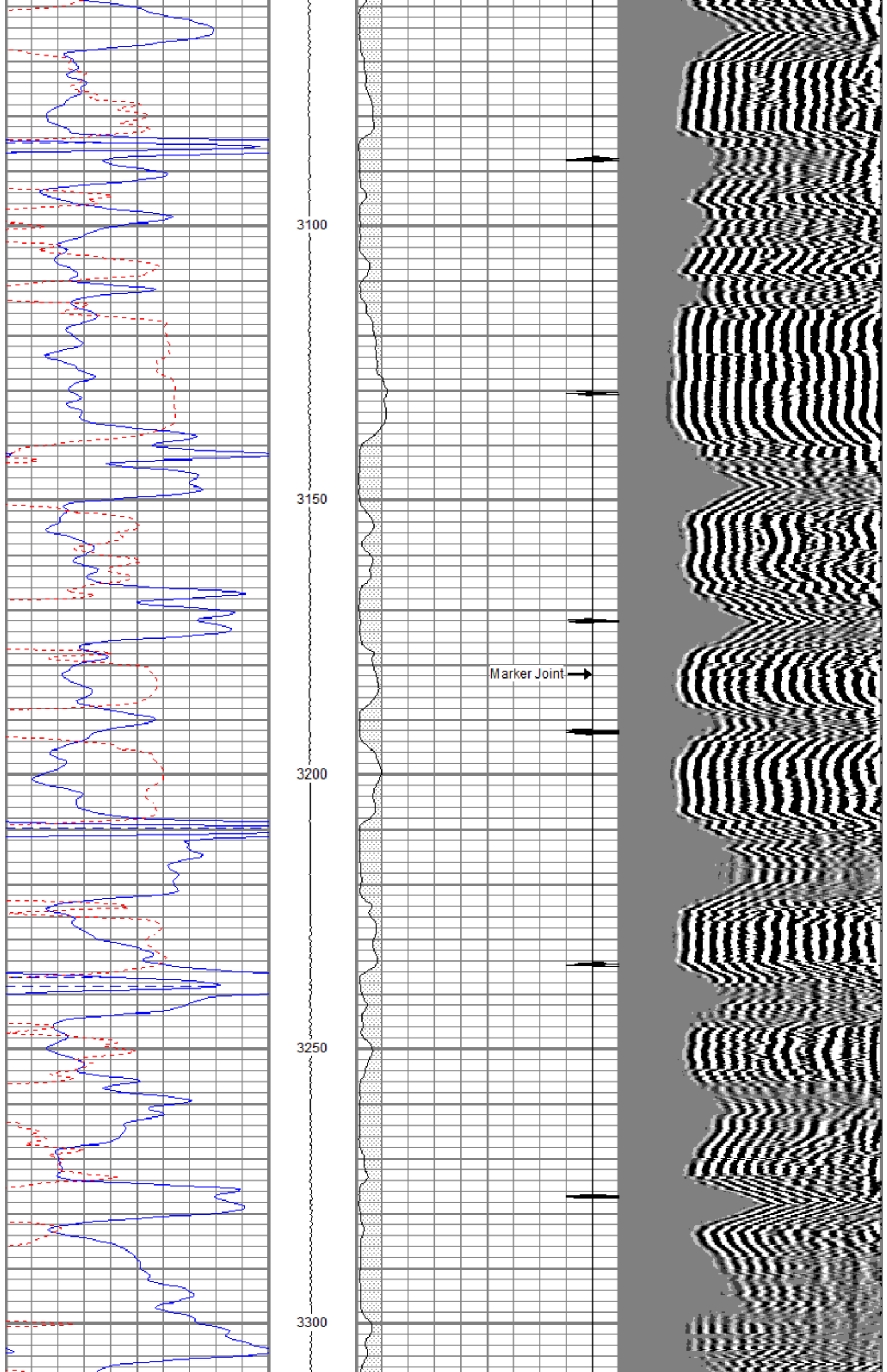
0	GR (GAPI)	150	LTEN	18	CCL	-2	200	VDL (usec)	1200
150	GR (GAPI)	300	(lb)	0	AMP3 (mV)	100			
450	TT3 (usec)	250	150	1500					

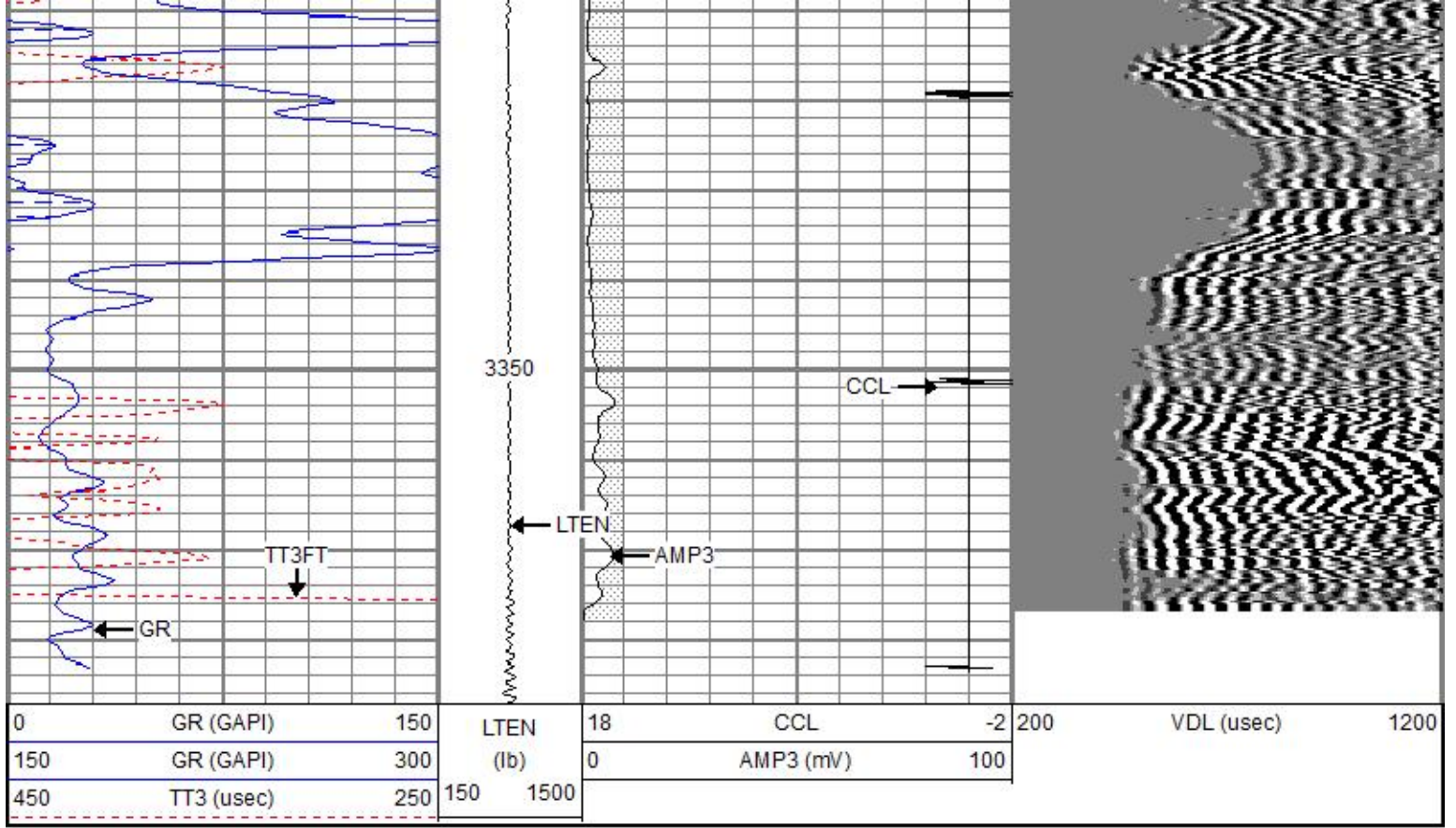








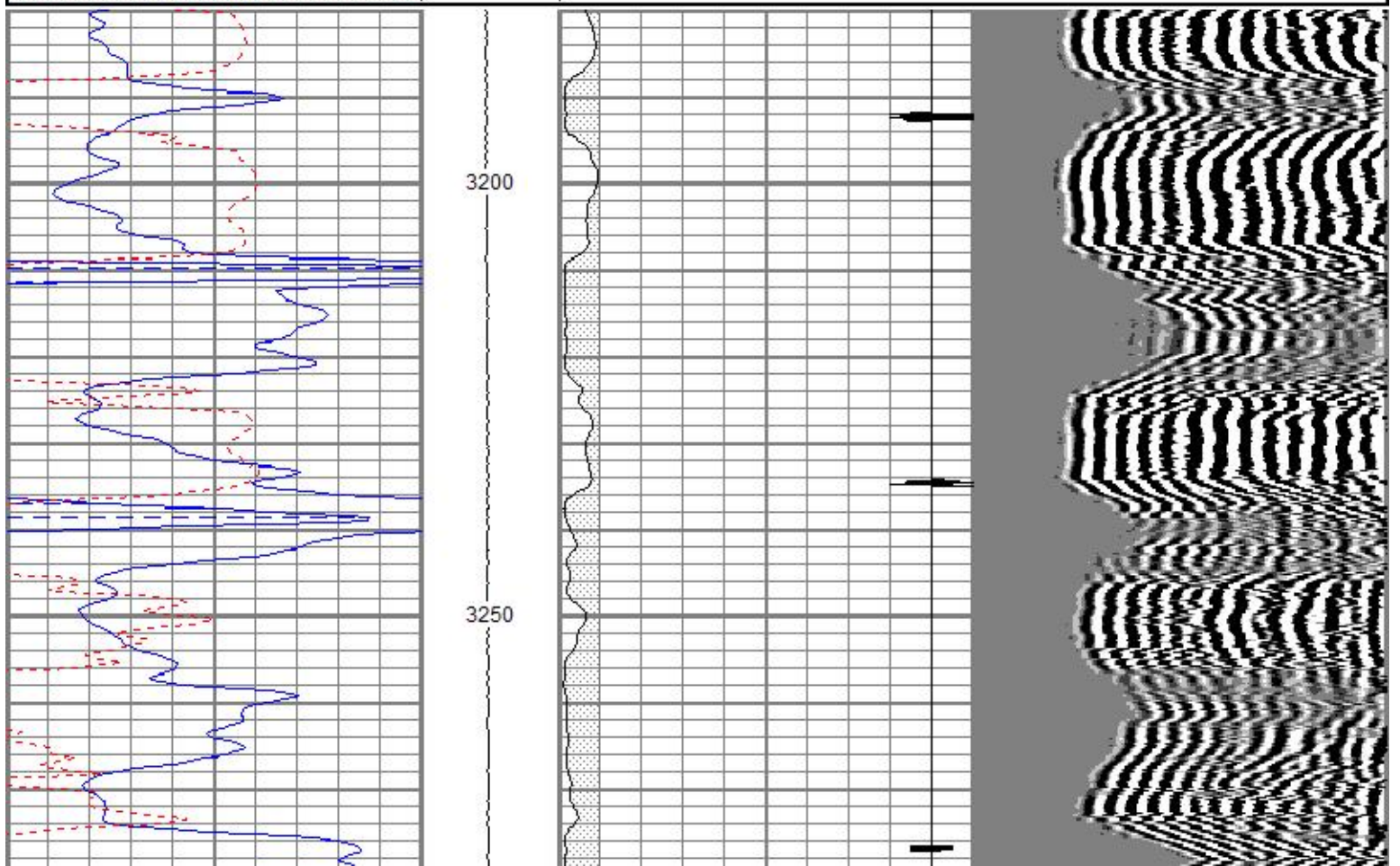


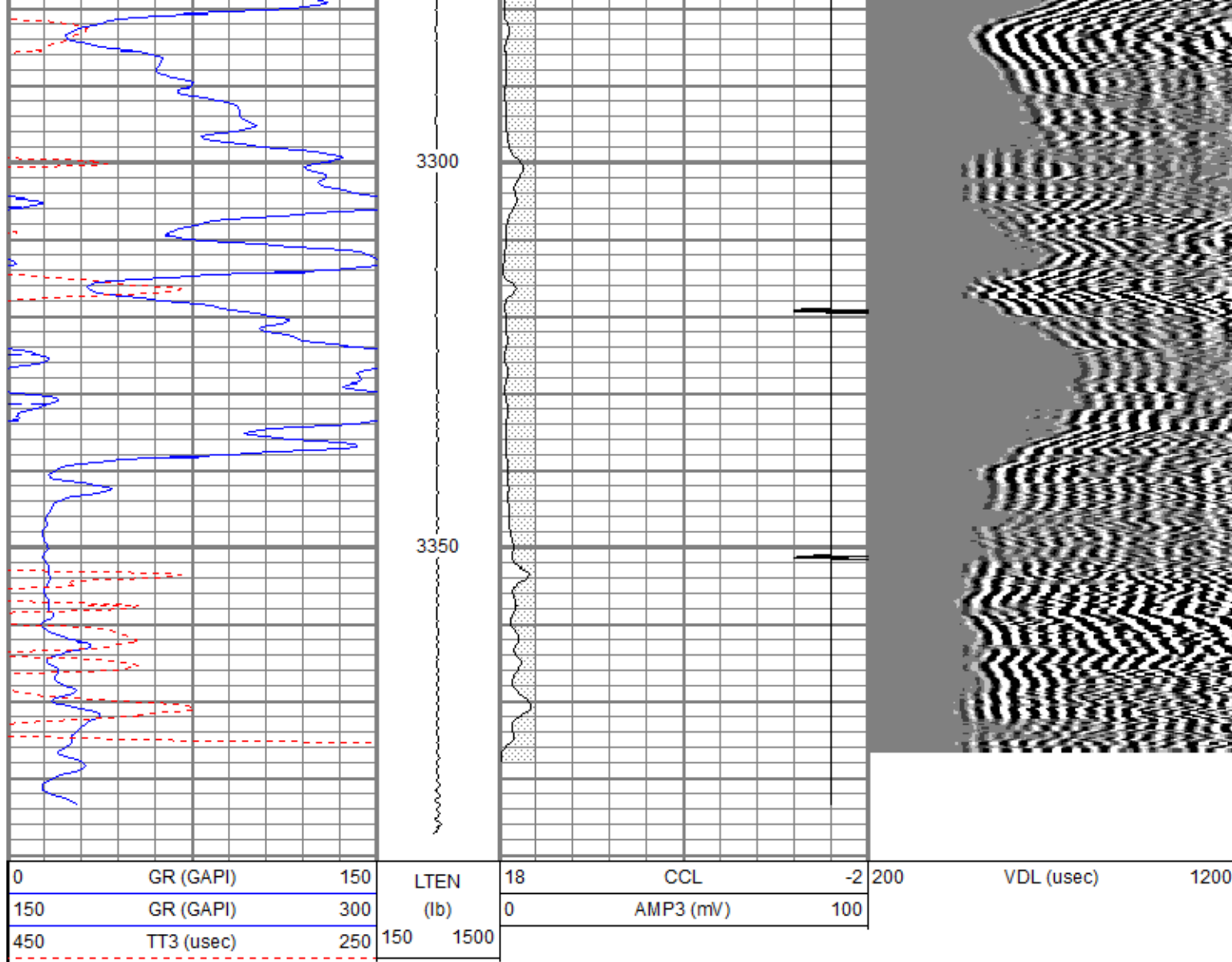


REPEAT SECTION

Database File oacress#7cbl.db
 Dataset Pathname pass1
 Presentation Format cblsec
 Dataset Creation Tue Jul 03 08:44:55 2018
 Charted by Depth in Feet scaled 1:240

0	GR (GAPI)	150	LTEN	18	CCL	-2	200	VDL (usec)	1200
150	GR (GAPI)	300	(lb)	0	AMP3 (mV)	100			
450	TT3 (usec)	250	150	1500					





Calibration Report

Database File oaccess#7cbl.db
 Dataset Pathname pass2
 Dataset Creation Tue Jul 03 08:52:11 2018

Gamma Ray Calibration Report

Serial Number: 080616
 Tool Model: 275D_INC
 Performed: Sat Apr 22 13:20:36 2017

Calibrator Value: 1.0 GAPI
 Background Reading: 0.0 cps
 Calibrator Reading: 1.0 cps

Sensitivity: 1.6000 GAPI/cps

Inclinometer Calibration Report

Performed: Mon Feb 22 09:45:37 2016

	Low Read.	High Read.	Low Ref.	High Ref.	
X Accelerometer	-3560.40	3602.00	-1.00	1.00	gee
Y Accelerometer	-3645.40	3546.20	-1.00	1.00	gee
Z Accelerometer	6.60	3581.20	0.00	1.00	gee

Segmented Cement Bond Log Calibration Report

Serial Number: 080321
 Tool Model: Probe

Calibration Casing Diameter:
Calibration Depth:

5.500
2106.706

in
ft

Master Calibration, performed Tue Jul 03 08:40:40 2018:

	Raw (v)		Calibrated (mv)		Results	
	Zero	Cal	Zero	Cal	Gain	Offset
3'	0.007	1.135	1.000	71.921	62.855	0.579
CAL	0.007	1.568				
5'	0.007	1.029	1.000	71.921	69.350	0.532
SUM						
S1	0.007	1.154	0.000	72.000	62.783	-0.434
S2	0.007	1.175	0.000	72.000	61.615	-0.417
S3	0.007	1.179	0.000	72.000	61.405	-0.416
S4	0.007	1.179	0.000	72.000	61.414	-0.426
S5	0.007	1.140	0.000	72.000	63.544	-0.438
S6	0.007	1.108	0.000	72.000	65.381	-0.437
S7	0.007	1.095	0.000	72.000	66.171	-0.455
S8	0.007	1.104	0.000	72.000	65.613	-0.453

Internal Reference Calibration, performed Thu Dec 04 16:30:55 2008:

	Raw (v)		Calibrated (v)		Results	
	Zero	Cal	Zero	Cal	Gain	Offset
CAL	0.000	0.000	0.007	1.568	1.000	0.000

Air Zero Calibration, performed Mon Jan 11 14:07:53 2016:

	Raw (v)		Calibrated (v)		Results	
	Zero		Zero		Gain	Offset
3'	0.000		0.000			0.000
5'	0.000		0.000			0.000
SUM						
S1	0.000		0.000			0.000
S2	0.000		0.000			0.000
S3	0.000		0.000			0.000
S4	0.000		0.000			0.000
S5	0.000		0.000			0.000
S6	0.000		0.000			0.000
S7	0.000		0.000			0.000
S8	0.000		0.000			0.000

Sensor	Offset (ft)	Schematic	Description	Length (ft)	O.D. (in)	Weight (lb)	
WVFS8	11.63		CENT-275 2 3/4" Centralizer	2.94	2.75	10.00	
WVFS7	11.63						
WVFS6	11.63						
WVFS5	11.63						
WVFS4	11.63						
WVFS3	11.63			RBT-Probe (080321) Prototype Probe Radii Bond Tool with Digital Telemetry	8.33	2.75	90.00
WVFS2	11.63						
WVFS1	11.63						
WVFCAL	11.63						
WVF3FT	11.63						
WVF5FT	10.63			CENT-275 2 3/4" Centralizer	2.94	2.75	10.00
HEADVOLT	7.44						
CCL	3.50						
ACCZ	1.83						
ACCY	1.83						
ACCX	1.83						
GR	0.83		GR-275D_INC (080616) 2-3/4" GR-CCL with Inclination	4.50	2.75		

Dataset: oacress#7cbl.db: field/well/run1/pass2
Total length: 18.71 ft

Total weight:	110.00 lb
O.D.:	2.75 in