



**DUAL
INDUCTION
LOG**

Company American Oil, LLC
 Well Cress #7
 Field Bemis-Shutts
 County Ellis
 State Kansas

Company American Oil, LLC
 Well Cress #7
 Field Bemis-Shutts
 County Ellis State Kansas

Location: 2418' FNL & 330' FEL
 API #: 15 051 26918
 SEC 13 TWP 11S RGE 17W
 Permanent Datum Ground Level Elevation 1819'
 Log Measured From KB 5' AGL
 Drilling Measured From KB
 Other Services CDNL
 Elevation
 K.B. 1824'
 D.F. 1823'
 G.L. 1819'

| | |
|------------------------------|--------------------|
| Date | 6-16-2018 |
| Run Number | One |
| Depth Driller | 3420' |
| Depth Logger | 3424' |
| Bottom Logged Interval | 3422' |
| Top Log Interval | 240' |
| Casing Driller | 8 5/8" @ 250' |
| Casing Logger | 260' |
| Bit Size | 7 7/8" |
| Type Fluid in Hole | Chemical |
| Density / Viscosity | 8.9/60 |
| PH / Fluid Loss | 10.3/7.2 |
| Source of Sample | Calculated |
| Rm @ Meas. Temp | 1.5@88degf |
| Rmf @ Meas. Temp | 1.2@88degf |
| Rmc @ Meas. Temp | 1.9@88degf |
| Source of Rmf / Rmc | Calculated |
| Rm @ BHT | 1.2@111degf |
| Time Circulation Stopped | 2:30 p.m. |
| Time Logger on Bottom | 4:50 p.m. |
| Maximum Recorded Temperature | 111degf |
| Equipment Number | T-127 |
| Location | Hays, KS |
| Recorded By | C. Patterson |
| Witnessed By | Mr. Austin Klaus |
| | Mr. Zach Patterson |

<<< Fold Here >>>

All interpretations are opinions based on inferences from electrical or other measurements and we cannot and do not guarantee the accuracy or correctness of any interpretation, and we shall not, except in the case of gross or willful negligence on our part, be liable or responsible for any loss, costs, damages, or expenses incurred or sustained by anyone resulting from any interpretation made by any of our officers, agents or employees. These interpretations are also subject to our general terms and conditions set out in our current Price Schedule.

Comments

North on 183 hwy to Saline River Rd.,
 Then East 8.3mi. to Cathedral Ave.,
 then South 1/2 mi. , West into.

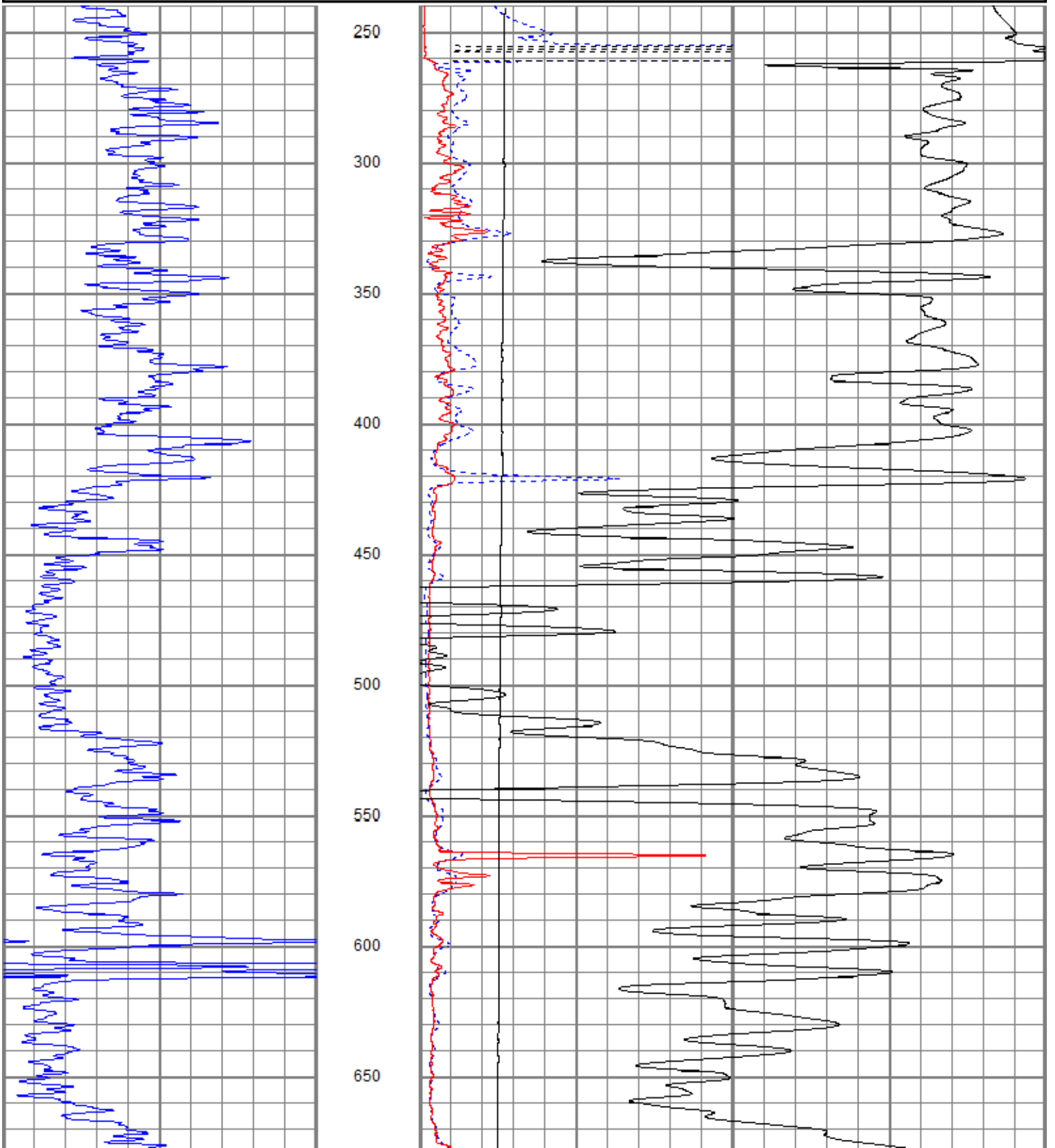
Thanks for using Gemini Wireline LLC
 785-625-1182

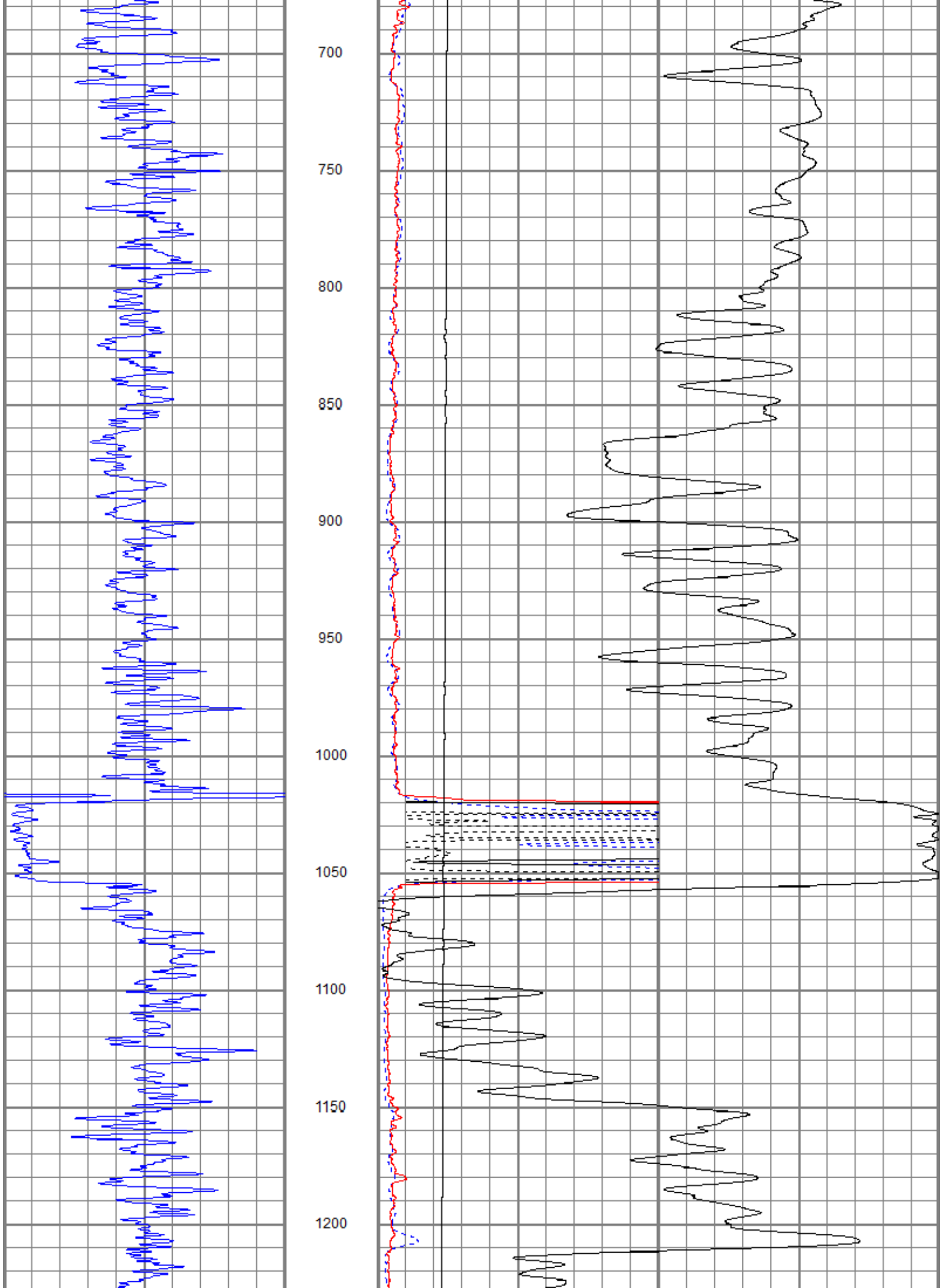


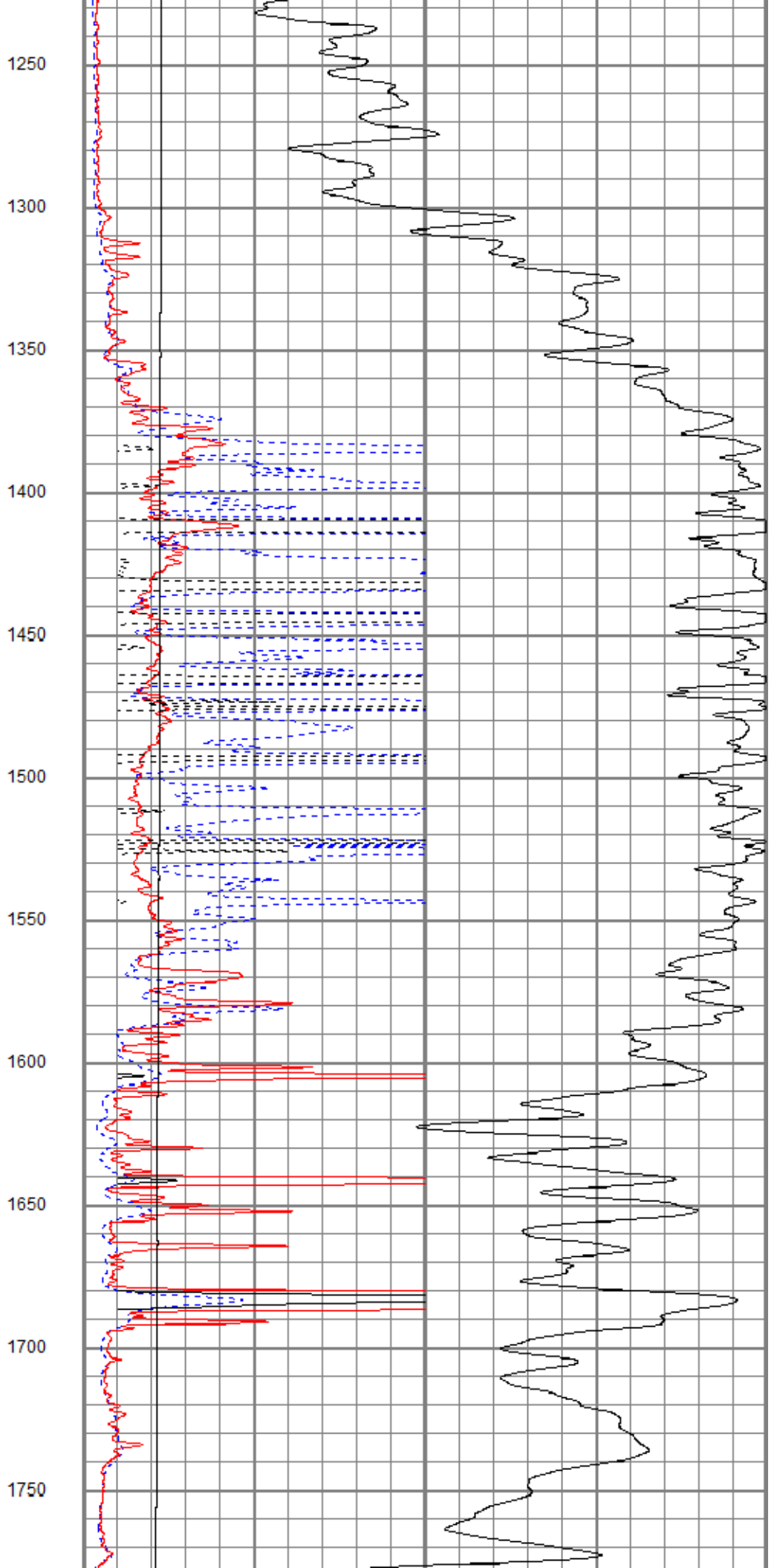
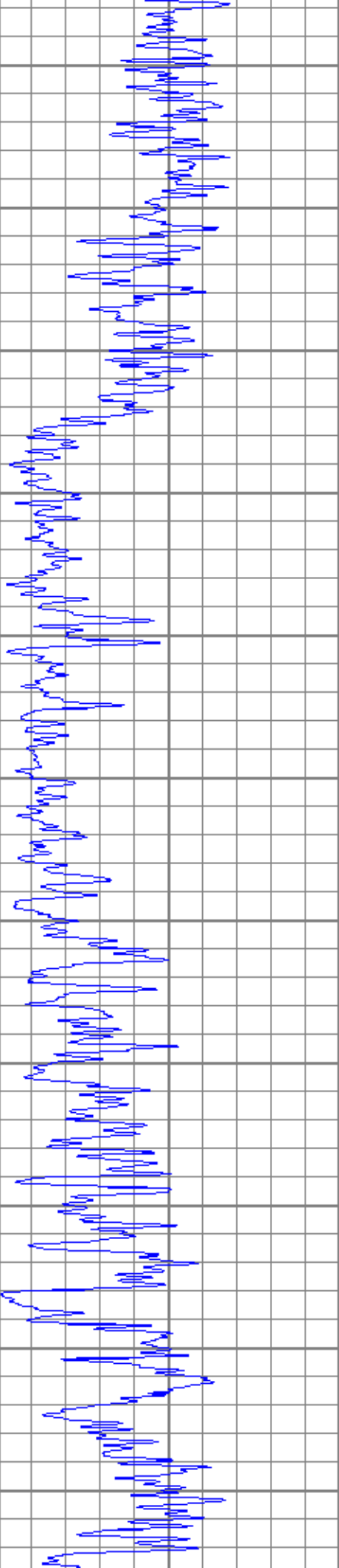
MAIN PASS

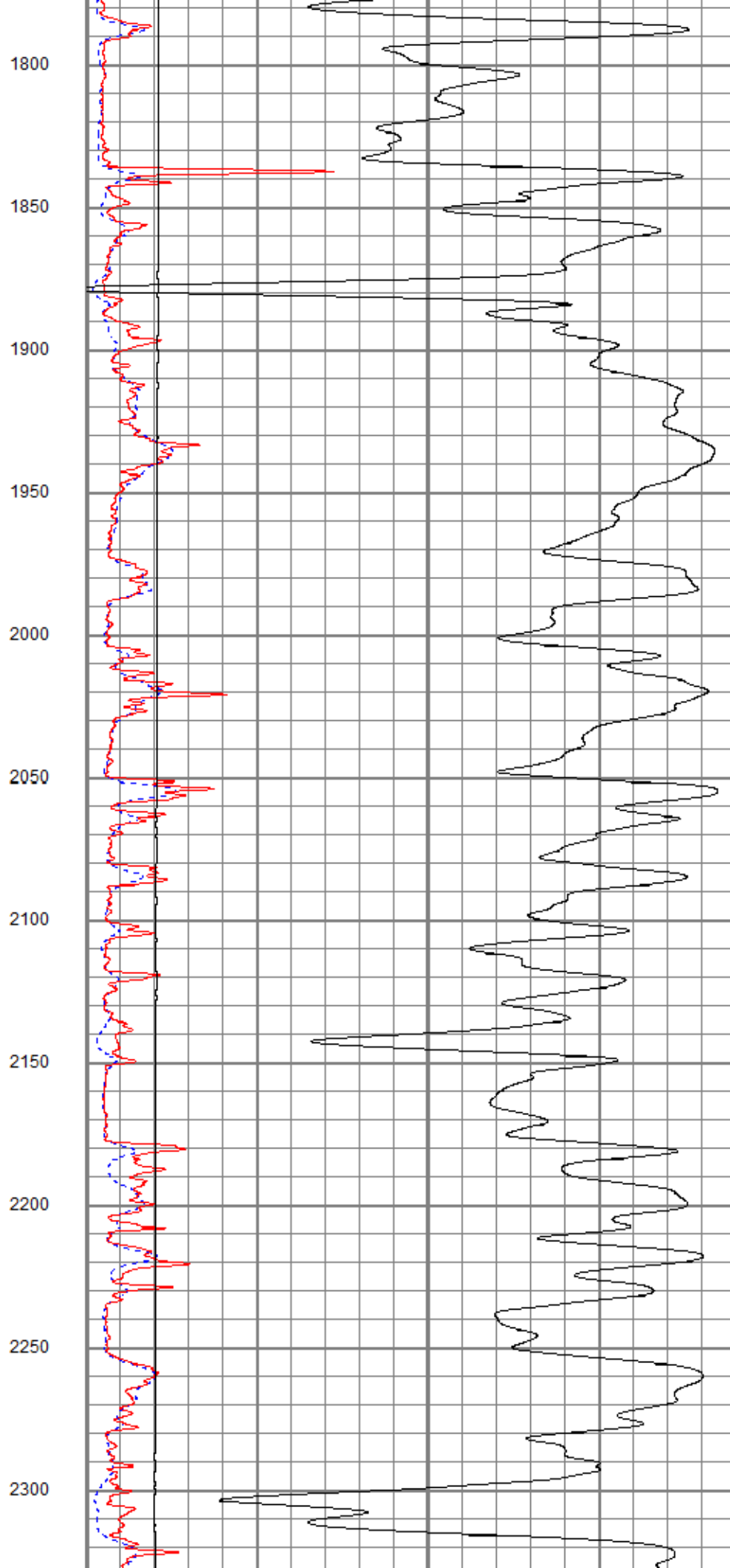
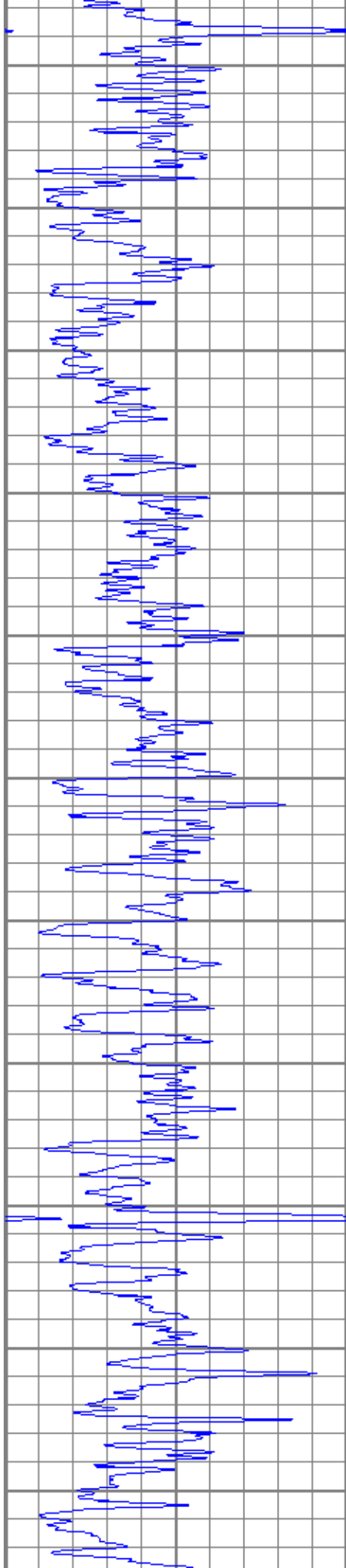
Database File oaccess7on.db
 Dataset Pathname pass2.1
 Presentation Format kdillinn
 Dataset Creation Sat Jun 16 17:52:57 2018
 Charted by Depth in Feet scaled 1:600

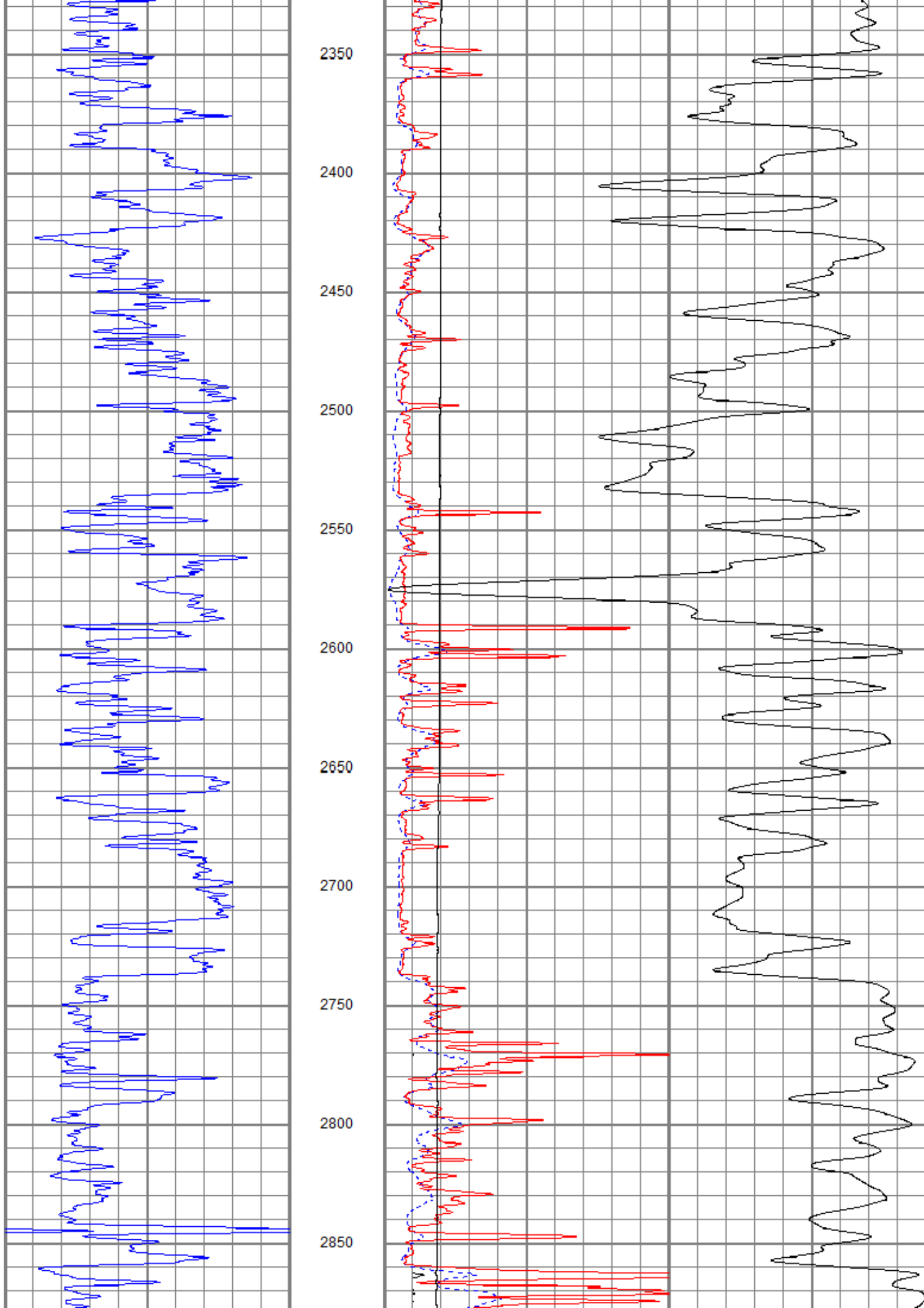
| | | | | | |
|----|-------------------|-----|-------|---------------|---|
| 0 | GR (GAPI) | 150 | 1000 | CILD (mmho/m) | 0 |
| | | | 10000 | LTEN (lb) | 0 |
| 0 | RILD (Ohm-m) | 50 | | | |
| 0 | RLL3 (Ohm-m) | 50 | | | |
| 50 | RILD x 10 (Ohm-m) | 500 | | | |
| 50 | RLL3 x 10 (Ohm-m) | 500 | | | |

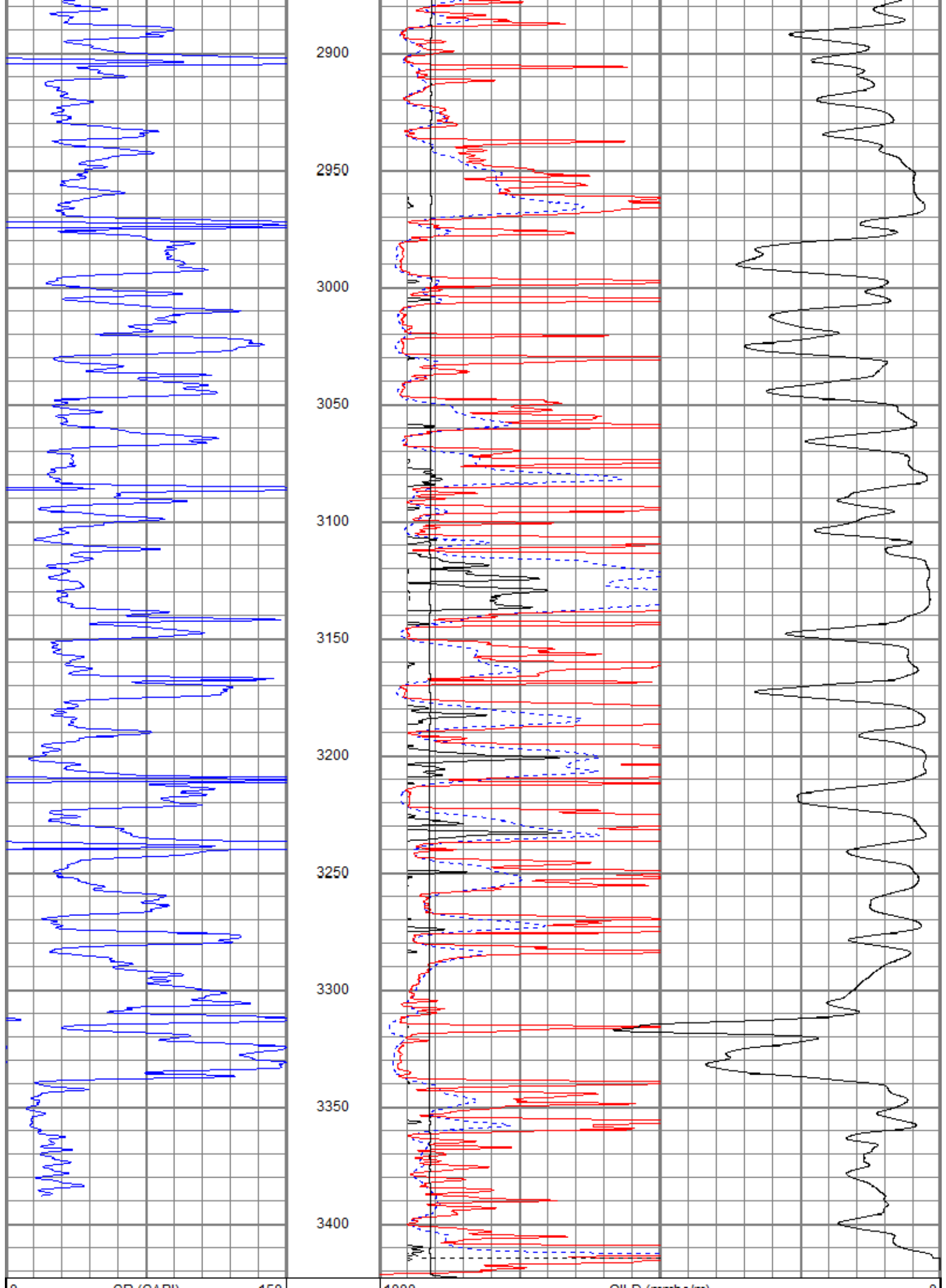












GR (GAPI) 150

| | | | |
|-------|-------------------|-------------|---|
| 10000 | | CILD (mm/m) | 0 |
| 0 | RILD (Ohm-m) | 50 | |
| 0 | RLL3 (Ohm-m) | 50 | |
| 50 | RILD x 10 (Ohm-m) | 500 | |
| 50 | RLL3 x 10 (Ohm-m) | 500 | |

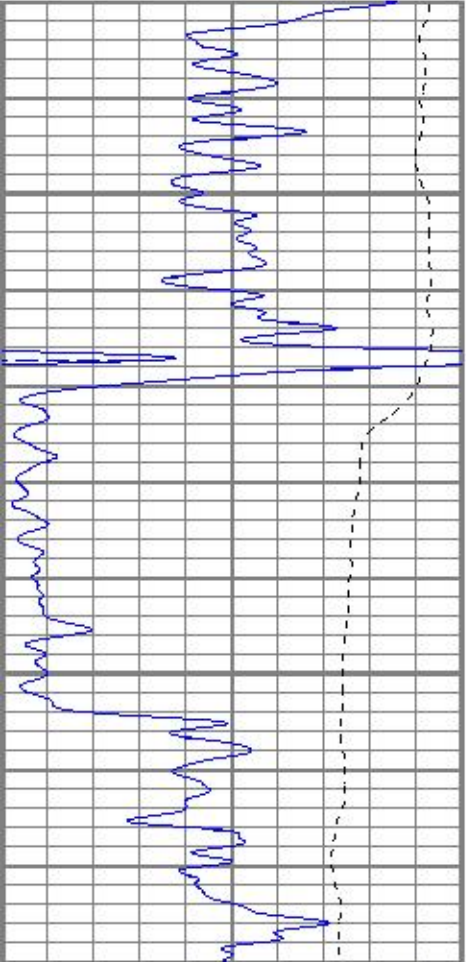


MAIN PASS

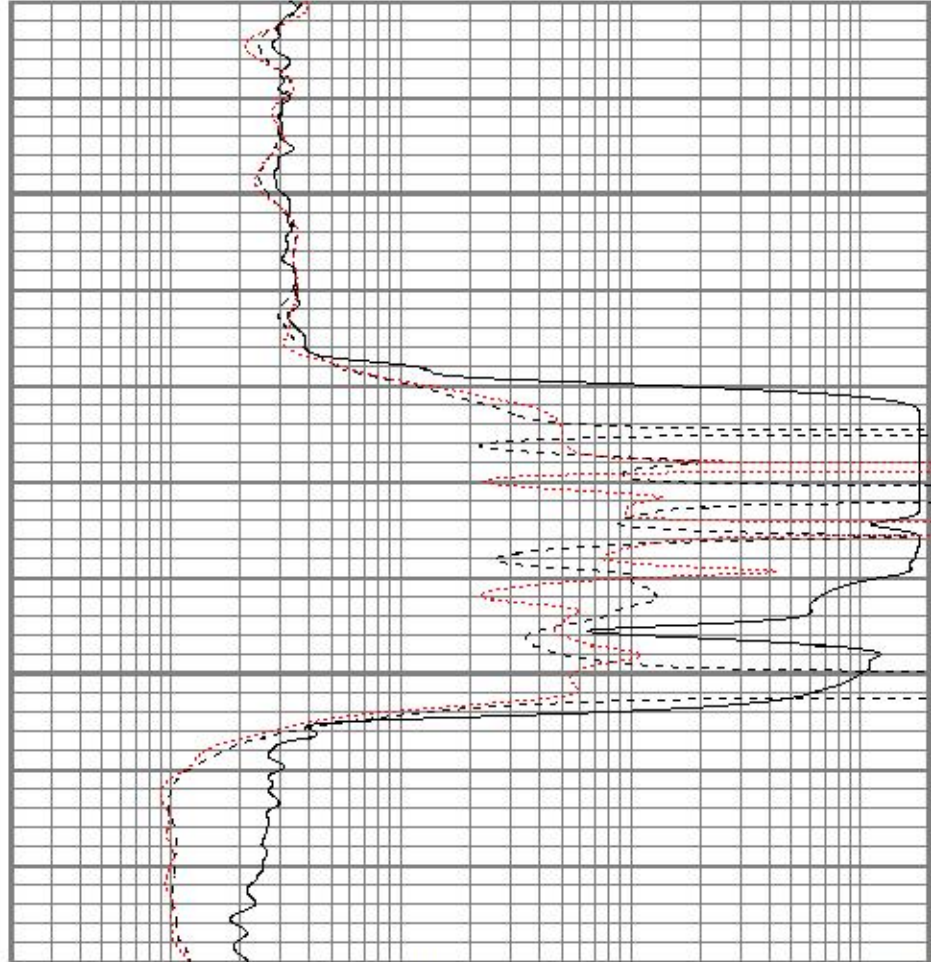
Database File oacress7oh.db
 Dataset Pathname pass2.1
 Presentation Format kdil
 Dataset Creation Sat Jun 16 17:52:57 2018
 Charted by Depth in Feet scaled 1:240

| | | |
|------|-----------|-----|
| 0 | GR (GAPI) | 150 |
| -100 | SP (mV) | 100 |

| | | |
|-----|--------------|------|
| 0.2 | RILD (Ohm-m) | 2000 |
| 0.2 | RLL3 (Ohm-m) | 2000 |
| 0.2 | RILM (Ohm-m) | 2000 |



| | | |
|------|-----------|-----|
| 0 | GR (GAPI) | 150 |
| -100 | SP (mV) | 100 |



| | | |
|-----|--------------|------|
| 0.2 | RILD (Ohm-m) | 2000 |
| 0.2 | RLL3 (Ohm-m) | 2000 |
| 0.2 | RILM (Ohm-m) | 2000 |

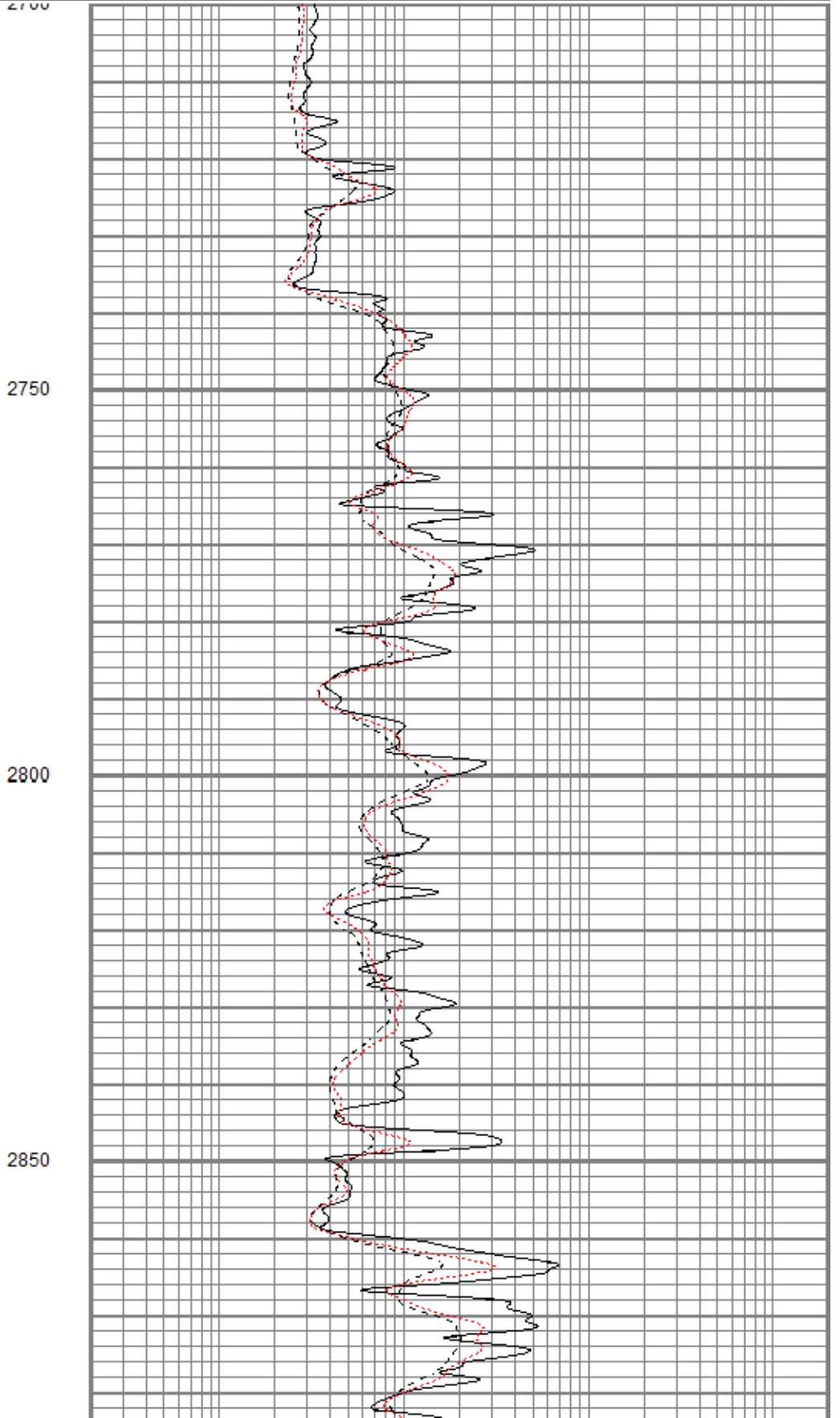
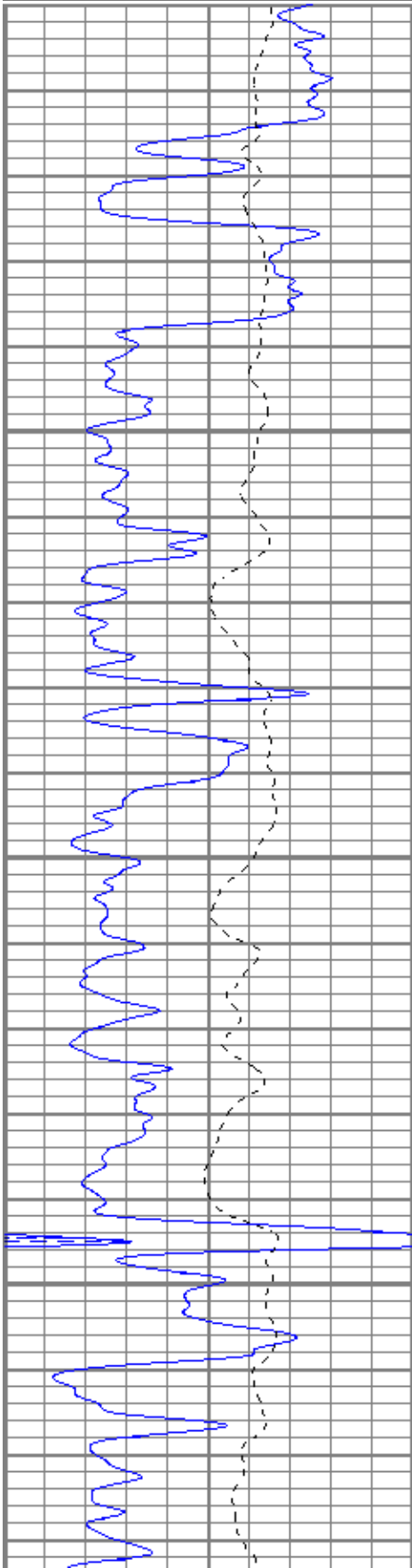


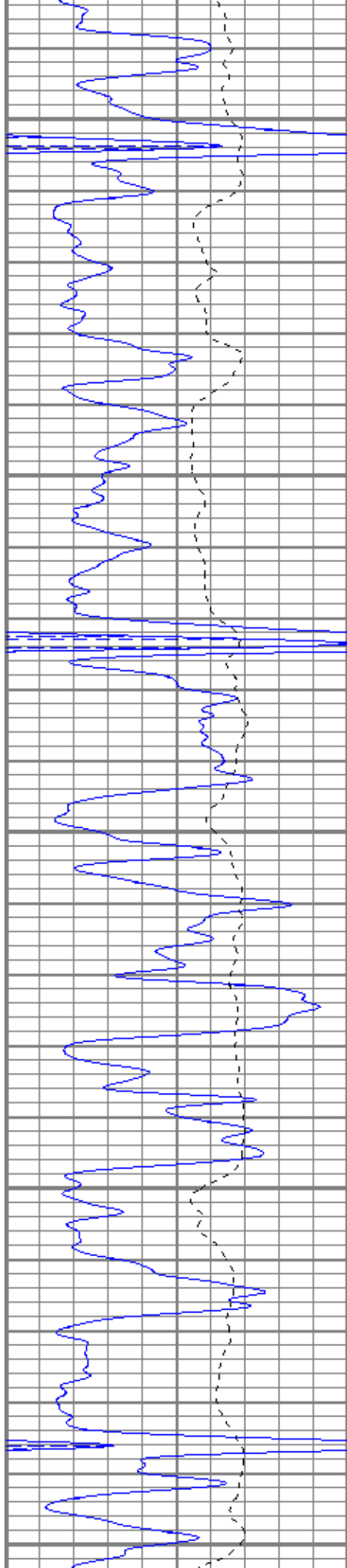
MAIN PASS

Database File oacress7oh.db
 Dataset Pathname pass2.1
 Presentation Format kdil
 Dataset Creation Sat Jun 16 17:52:57 2018
 Charted by Depth in Feet scaled 1:240

| | | |
|------|-----------|-----|
| 0 | GR (GAPI) | 150 |
| -100 | SP (mV) | 100 |

| | | |
|-----|--------------|------|
| 0.2 | RILD (Ohm-m) | 2000 |
| 0.2 | RLL3 (Ohm-m) | 2000 |
| 0.2 | RILM (Ohm-m) | 2000 |





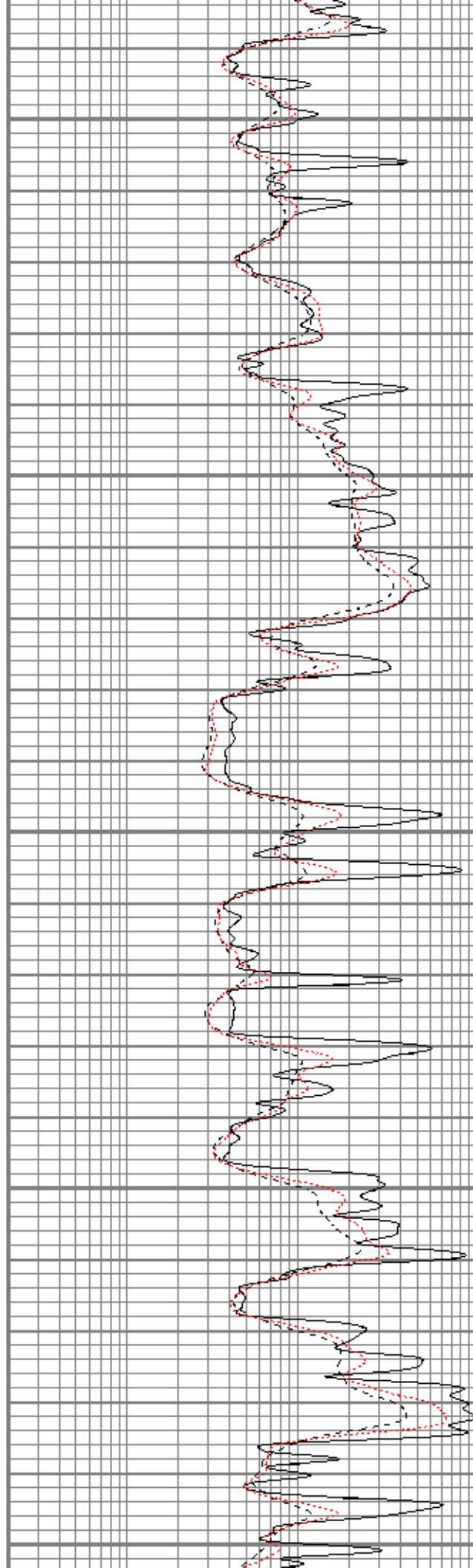
2900

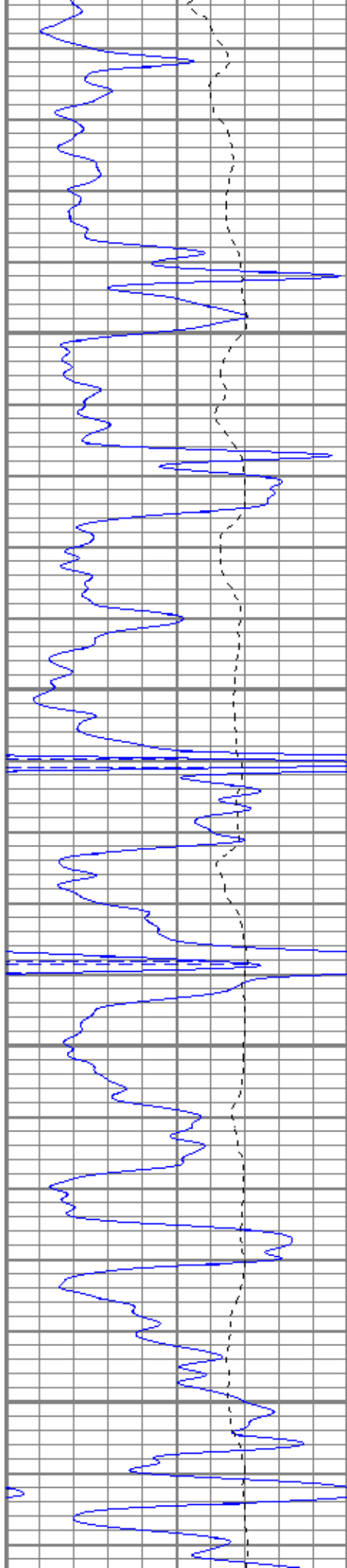
2950

3000

3050

3100



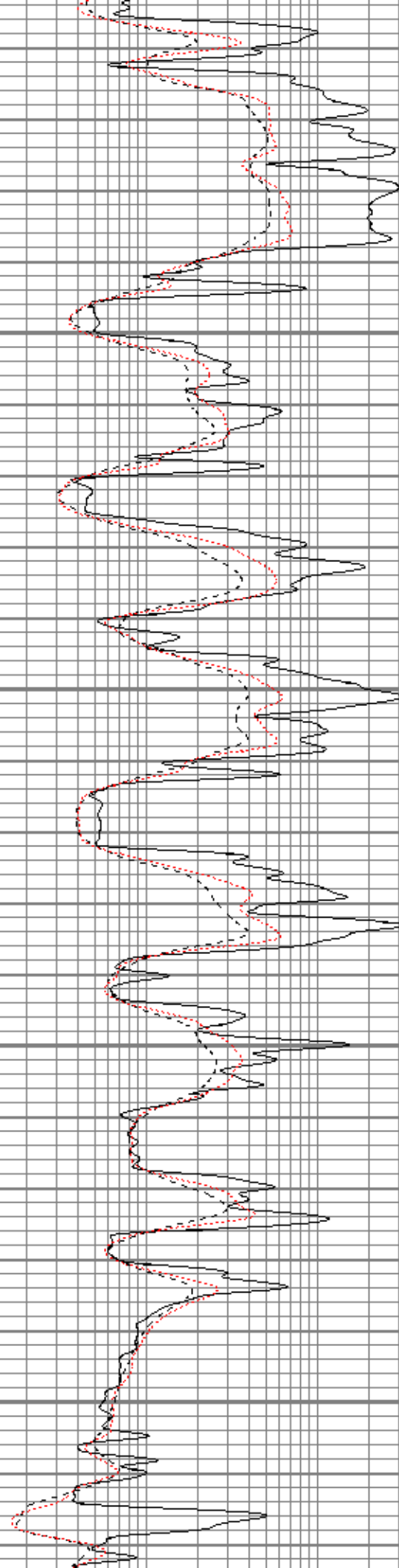


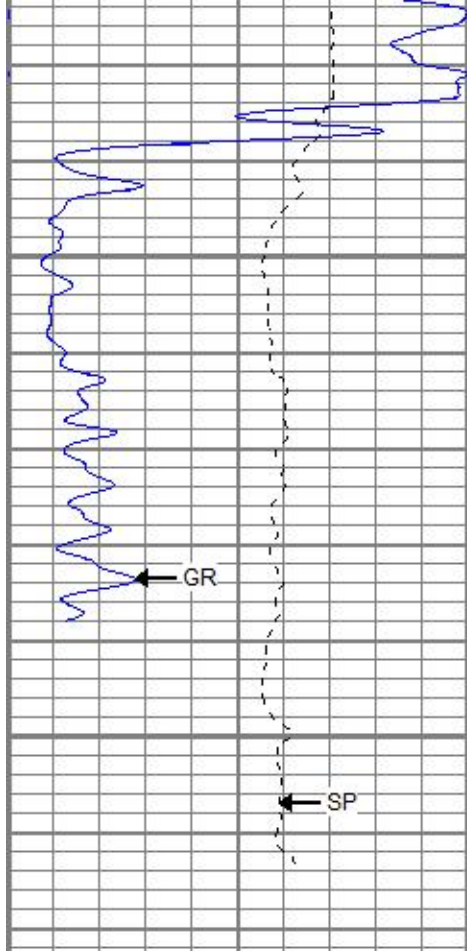
3150

3200

3250

3300

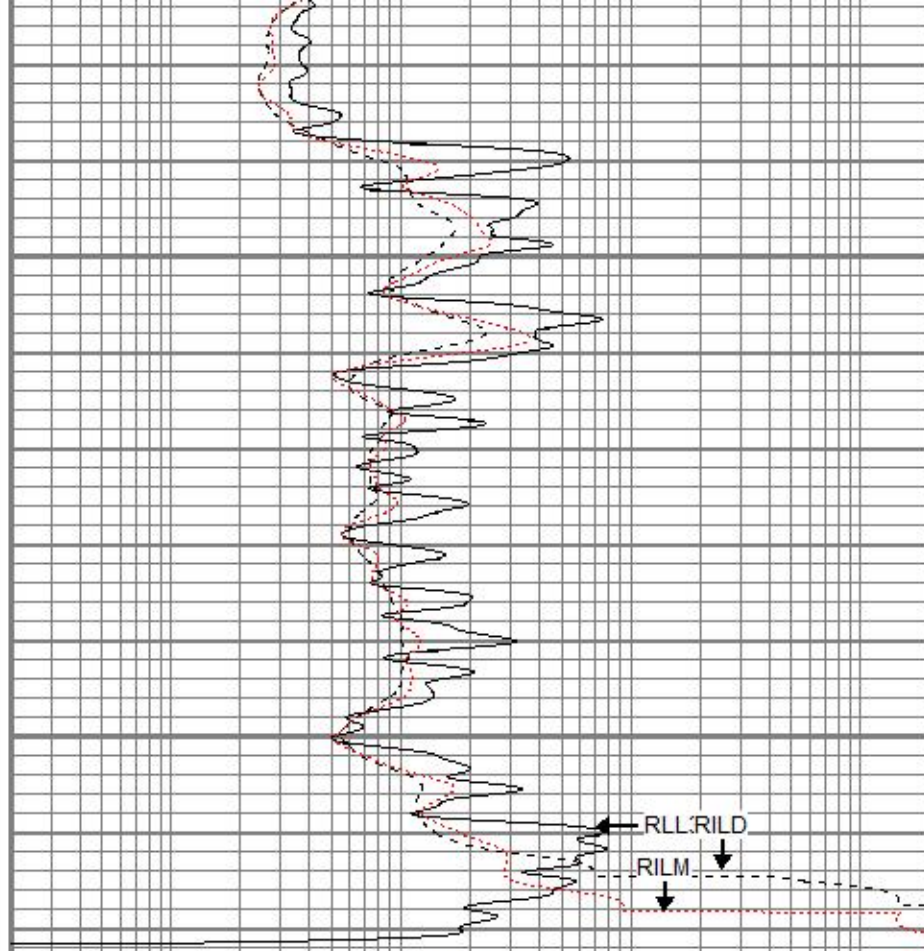




3350

3400

| | | |
|------|-----------|-----|
| 0 | GR (GAPI) | 150 |
| -100 | SP (mV) | 100 |



| | | |
|-----|--------------|------|
| 0.2 | RILD (Ohm-m) | 2000 |
| 0.2 | RLL3 (Ohm-m) | 2000 |
| 0.2 | RILM (Ohm-m) | 2000 |

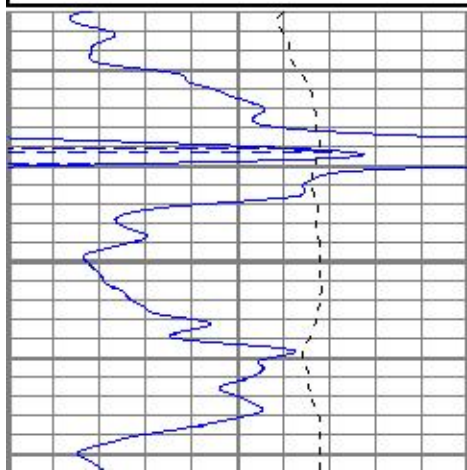


REPEAT SECTION

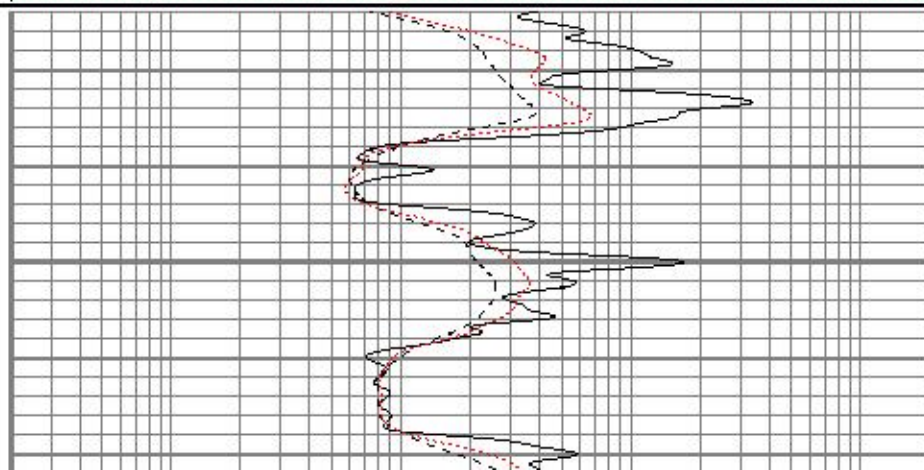
Database File oacress7oh.db
 Dataset Pathname pass1.1
 Presentation Format kdil
 Dataset Creation Sat Jun 16 17:37:02 2018
 Charted by Depth in Feet scaled 1:240

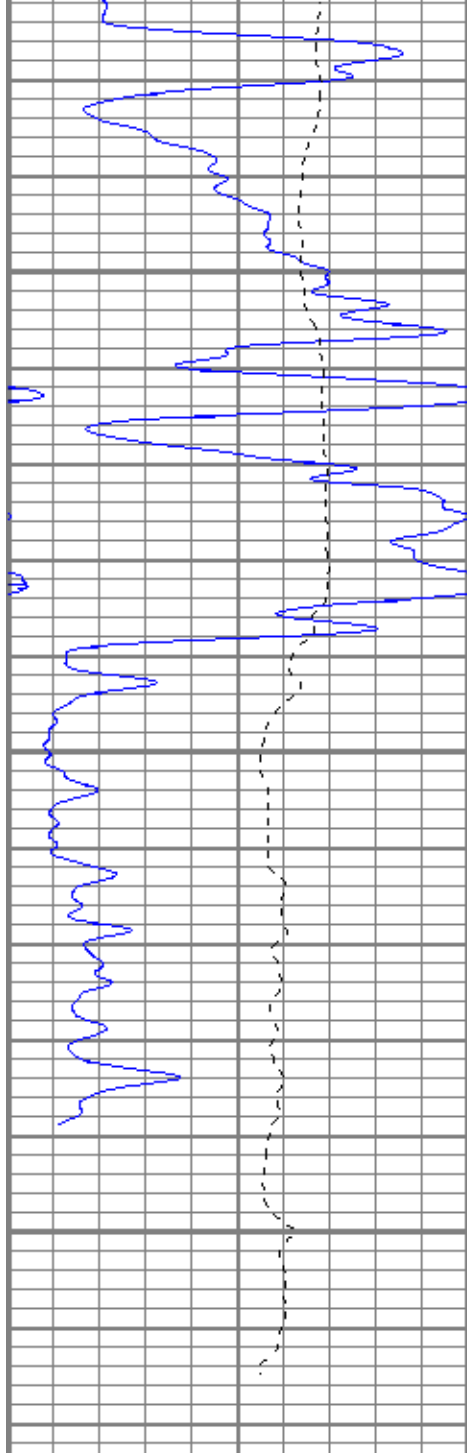
| | | |
|------|-----------|-----|
| 0 | GR (GAPI) | 150 |
| -100 | SP (mV) | 100 |

| | | |
|-----|--------------|------|
| 0.2 | RILD (Ohm-m) | 2000 |
| 0.2 | RLL3 (Ohm-m) | 2000 |
| 0.2 | RILM (Ohm-m) | 2000 |



3250



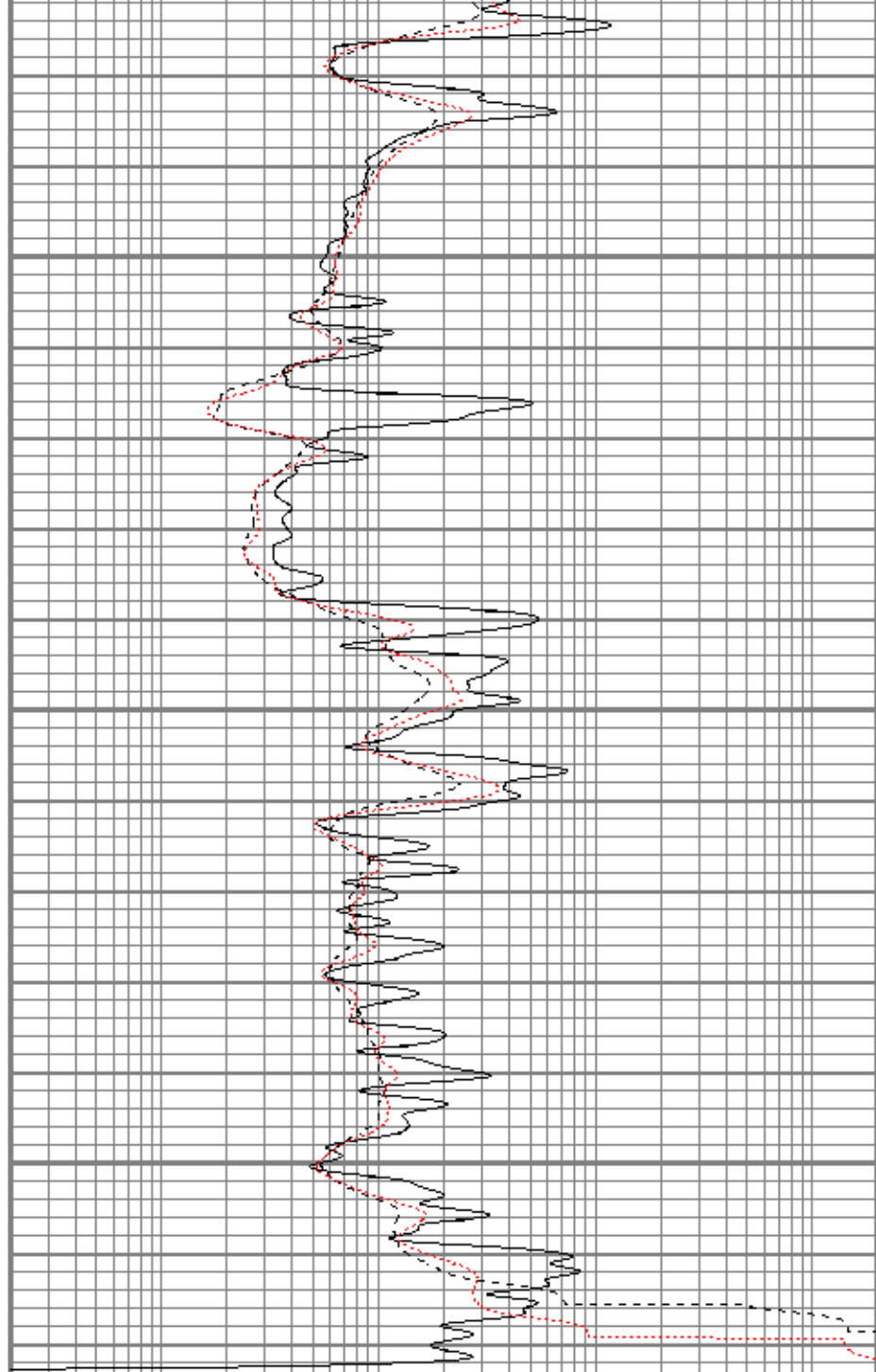


3300

3350

3400

| | | |
|------|-----------|-----|
| 0 | GR (GAPI) | 150 |
| -100 | SP (mV) | 100 |



| | | |
|-----|--------------|------|
| 0.2 | RILD (Ohm-m) | 2000 |
| 0.2 | RLL3 (Ohm-m) | 2000 |
| 0.2 | RILM (Ohm-m) | 2000 |

Calibration Report

Database File oaccess7oh.db
 Dataset Pathname pass2.1
 Dataset Creation Sat Jun 16 17:52:57 2018

Dual Induction Calibration Report

Serial-Model: 5375-G
 Surface Cal Performed: Mon Jun 04 17:57:18 2018
 Downhole Cal Performed: Mon Jun 04 17:57:18 2018
 After Survey Verification Performed: Mon Jun 04 17:57:18 2018

Surface Calibration

Readings

References

Results

| Loop: | Air | Loop | | Air | Loop | | m | b |
|-----------|--------|-------|---|-------|---------|--------|---------|--------|
| Deep | -0.002 | 0.655 | V | 0.000 | 350.000 | mmho/m | 532.190 | 1.293 |
| Medium | 0.011 | 0.730 | V | 0.000 | 400.000 | mmho/m | 555.870 | -5.985 |
| Internal: | Zero | Cal | | Zero | Cal | | m | b |
| Deep | -0.002 | 0.654 | V | 0.000 | 350.000 | mmho/m | 532.823 | 1.314 |
| Medium | 0.011 | 0.731 | V | 0.000 | 550.000 | mmho/m | 763.357 | -8.251 |

| Downhole Calibration | | | | | | | | |
|----------------------|----------|-------|--------|------------|---------|--------|---------|--------|
| | Readings | | | References | | | Results | |
| Internal: | Zero | Cal | | Zero | Cal | | m | b |
| Deep | 0.000 | 0.000 | mmho/m | -0.019 | 349.565 | mmho/m | 1.000 | 0.000 |
| Medium | 0.000 | 0.000 | mmho/m | 0.024 | 400.529 | mmho/m | 1.000 | 0.000 |
| Shallow | 2.433 | 0.017 | V | 500.000 | 2.000 | Ohm-m | 180.067 | -0.524 |

| After Survey Verification | | | | | | | | |
|---------------------------|----------|-------|--------|---------|-------|--------|---------|-------|
| | Readings | | | Targets | | | Results | |
| Internal: | Zero | Cal | | Zero | Cal | | m' | b' |
| Deep | 0.000 | 0.000 | mmho/m | 0.000 | 0.000 | mmho/m | 1.000 | 0.000 |
| Medium | 0.000 | 0.000 | mmho/m | 0.000 | 0.000 | mmho/m | 1.000 | 0.000 |
| Shallow | 0.000 | 0.000 | Ohm-m | 500.000 | 2.000 | Ohm-m | 1.000 | 0.000 |

| Compensated Density Calibration Report | | | | | | | | |
|--|--|--|--|--------------------------|--|--|--|--|
| Serial-Model: | | | | 2501DHT-DHT | | | | |
| Source / Verifier: | | | | csv-j12 / | | | | |
| Master Calibration Performed: | | | | Mon Jun 04 16:58:12 2018 | | | | |
| Before Survey Verification Performed: | | | | | | | | |
| After Survey Verification Performed: | | | | | | | | |

| Master Calibration | | | | | | | | |
|---------------------|---------|------|--|-----------------------------|---------------|-----|--|--|
| | Density | | | Far Detector | Near Detector | | | |
| Magnesium | 1.750 | g/cc | | 711.36 | 284.22 | cps | | |
| Aluminum | 2.640 | g/cc | | 133.07 | 180.42 | cps | | |
| Spine Angle = 74.83 | | | | Density/Spine Ratio = 0.512 | | | | |
| | Size | | | Reading | | | | |
| Small Ring | 7.55 | in | | 8572.55 | | | | |
| Large Ring | 14.00 | in | | 11285.70 | | | | |

| Before Survey Verification | | | | | | | | |
|----------------------------|--------|------|--|----------|--|------|--|--|
| | Target | | | Measured | | | | |
| | | g/cc | | | | g/cc | | |
| | | g/cc | | | | g/cc | | |
| | | g/cc | | | | g/cc | | |

| After Survey Verification | | | | | | | | |
|---------------------------|--------|------|--|----------|--|------|--|--|
| | Target | | | Measured | | | | |
| | | g/cc | | | | g/cc | | |
| | | g/cc | | | | g/cc | | |
| | | g/cc | | | | g/cc | | |

| Gamma Ray Calibration Report | | | | | | | | |
|------------------------------|--|--|--------------------------|--|--|--|--|--|
| Serial Number: | | | 2000 | | | | | |
| Tool Model: | | | P2000 | | | | | |
| Performed: | | | Sun May 06 10:04:13 2018 | | | | | |

Calibrator Value: 1.0 GAPI
 Background Reading: 0.0 cps
 Calibrator Reading: 1.0 cps
 Sensitivity: 0.7000 GAPI/cps

Neutron Calibration Report

Serial Number: 5108
 Tool Model: PROBE
 Performed: Sun Feb 19 03:21:57 2017
 Calibrator Value: 1 NAPI
 Calibrator Reading: 1 cps
 Sensitivity: 1 NAPI/cps

| Sensor | Offset (ft) | Schematic | Description | Length (ft) | O.D. (in) | Weight (lb) | |
|----------|-------------|-----------|---|--------------------------|-----------|-------------|--------|
| NEU | 38.37 | | CHD-None | 0.75 | 1.50 | 5.00 | |
| | | | NEU-PROBE (5108) Probe | 4.92 | 3.63 | 85.00 | |
| GR | 32.57 | | GR-P2000 (2000) | 3.67 | 3.25 | 40.00 | |
| | | | CDL-DHT (2501DHT) Digital High Temp CDL Tool | 9.69 | 4.00 | 201.00 | |
| LSD | 23.78 | | | | | | |
| DCAL | 23.49 | | | | | | |
| SSD | 23.24 | | | | | | |
| HEADVOLT | 21.47 | | | | | | |
| SP | 10.60 | | | DIL-G (5375) Gearhart | 21.47 | 4.00 | 345.00 |
| CILD | 10.60 | | | | | | |
| CILM | 6.89 | | | | | | |
| RLL3 | 1.70 | | | | | | |

Dataset: oacress7oh.db: field/well/run1/pass2.1
 Total length: 40.49 ft
 Total weight: 676.00 lb
 O.D.: 4.00 in

