



**COMPENSATED DENSITY
NEUTRON
LOG**

Company American Oil, LLC		Well Cress #7		Field Bemis-Shutts		County Ellis		State Kansas	
Location:		API #: 15 051 26918		Other Services DIL					
SEC 13 TWP 11S RGE 17W		2418' FNL & 330' FEL		Elevation 1819'					
Permanent Datum		Ground Level		Elevation		K.B. 1824'			
Log Measured From		KB 5' AGL				D.F. 1823'			
Drilling Measured From		KB				G.L. 1819'			

Date	6-16-2018	Run Number	One
Depth Driller	3420'	Depth Logger	3424'
Bottom Logged Interval	3402'	Top Log Interval	2700'
Casing Driller	8 5/8" @ 250'	Casing Logger	260'
Bit Size	7 7/8"	Type Fluid in Hole	Chemical
Density / Viscosity	8.9/60	PH / Fluid Loss	10.3/7.2
Source of Sample	Calculated	Rm @ Meas. Temp	1.5@88degf
Rmf @ Meas. Temp	1.2@88degf	Rmc @ Meas. Temp	1.9@88degf
Source of Rmf / Rmc	Calculated	Rm @ BHT	1.2@111degf
Time Circulation Stopped	2:30 p.m.	Time Logger on Bottom	4:50 p.m.
Maximum Recorded Temperature	111degf	Equipment Number	T-127
Location	Hays, KS	Recorded By	C. Patterson
Witnessed By	Mr. Austin Klaus		Mr. Zach Patterson

<<< Fold Here >>>

All interpretations are opinions based on inferences from electrical or other measurements and we cannot and do not guarantee the accuracy or correctness of any interpretation, and we shall not, except in the case of gross or willful negligence on our part, be liable or responsible for any loss, costs, damages, or expenses incurred or sustained by anyone resulting from any interpretation made by any of our officers, agents or employees. These interpretations are also subject to our general terms and conditions set out in our current Price Schedule.

Comments

North on 183 hwy to Saline River Rd.,
Then East 8.3mi. to Cathedral Ave.,
then South 1/2 mi. , West into.

Thanks for using Gemini Wireline LLC
785-625-1182

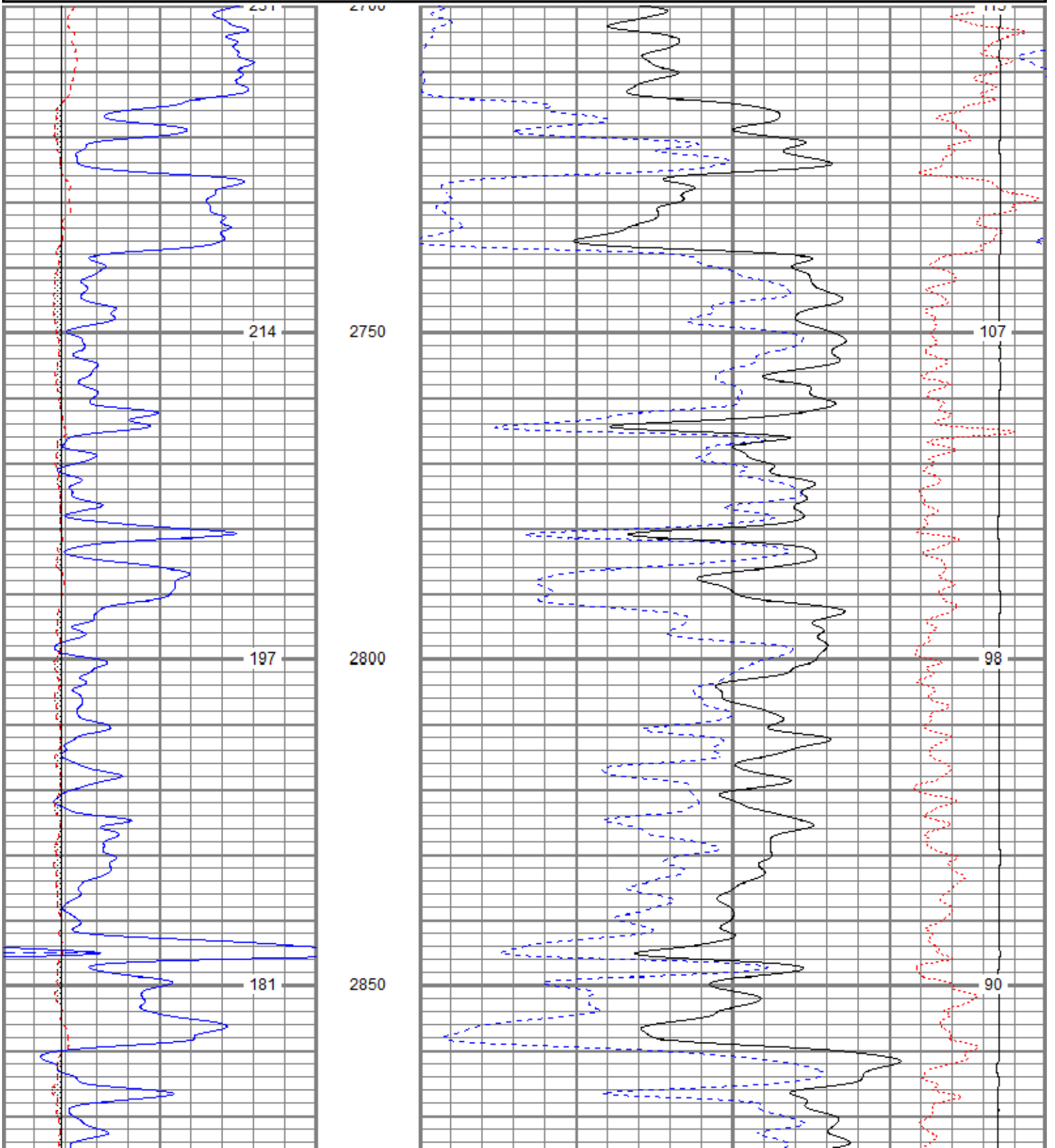


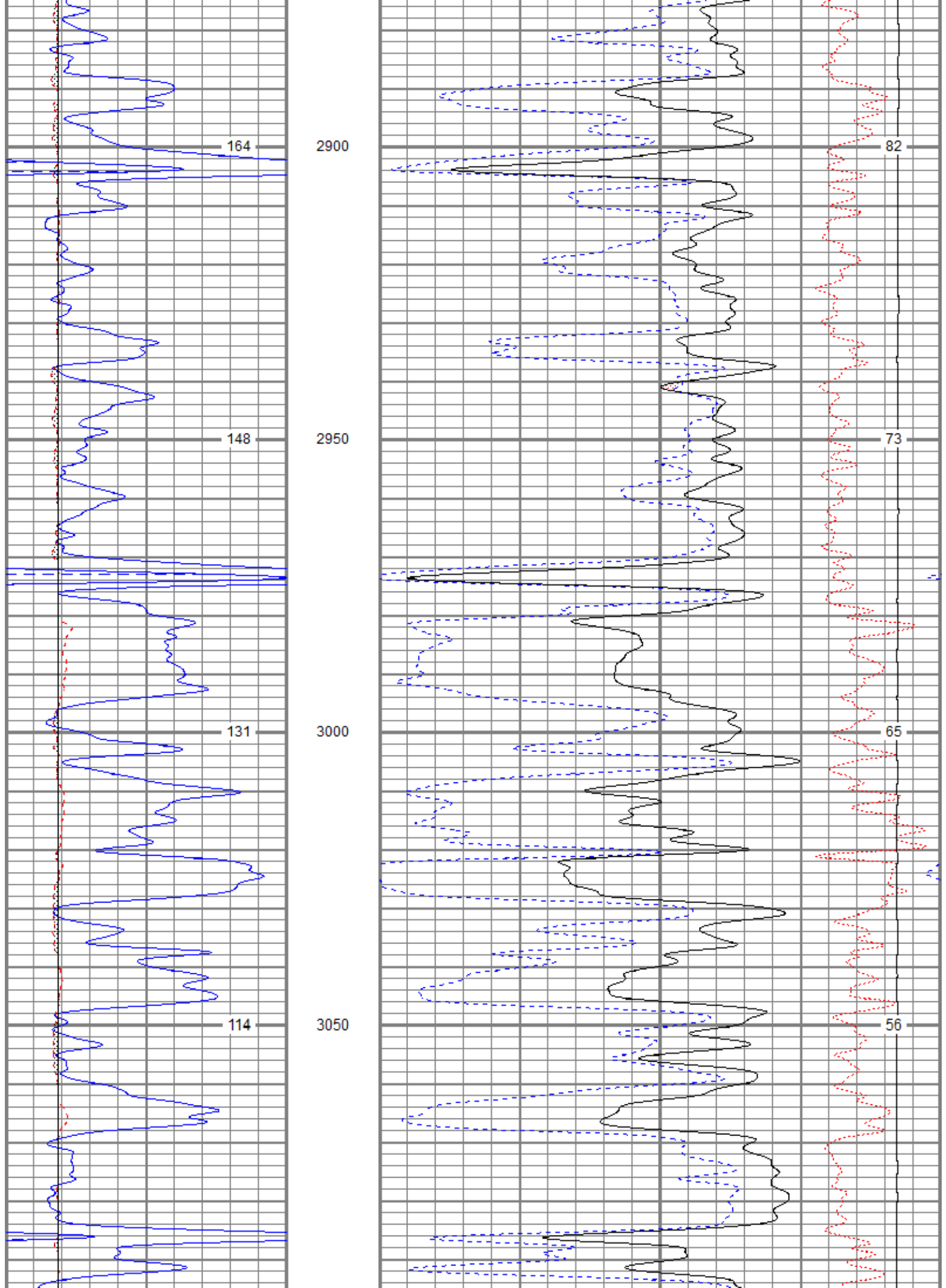
MAIN PASS

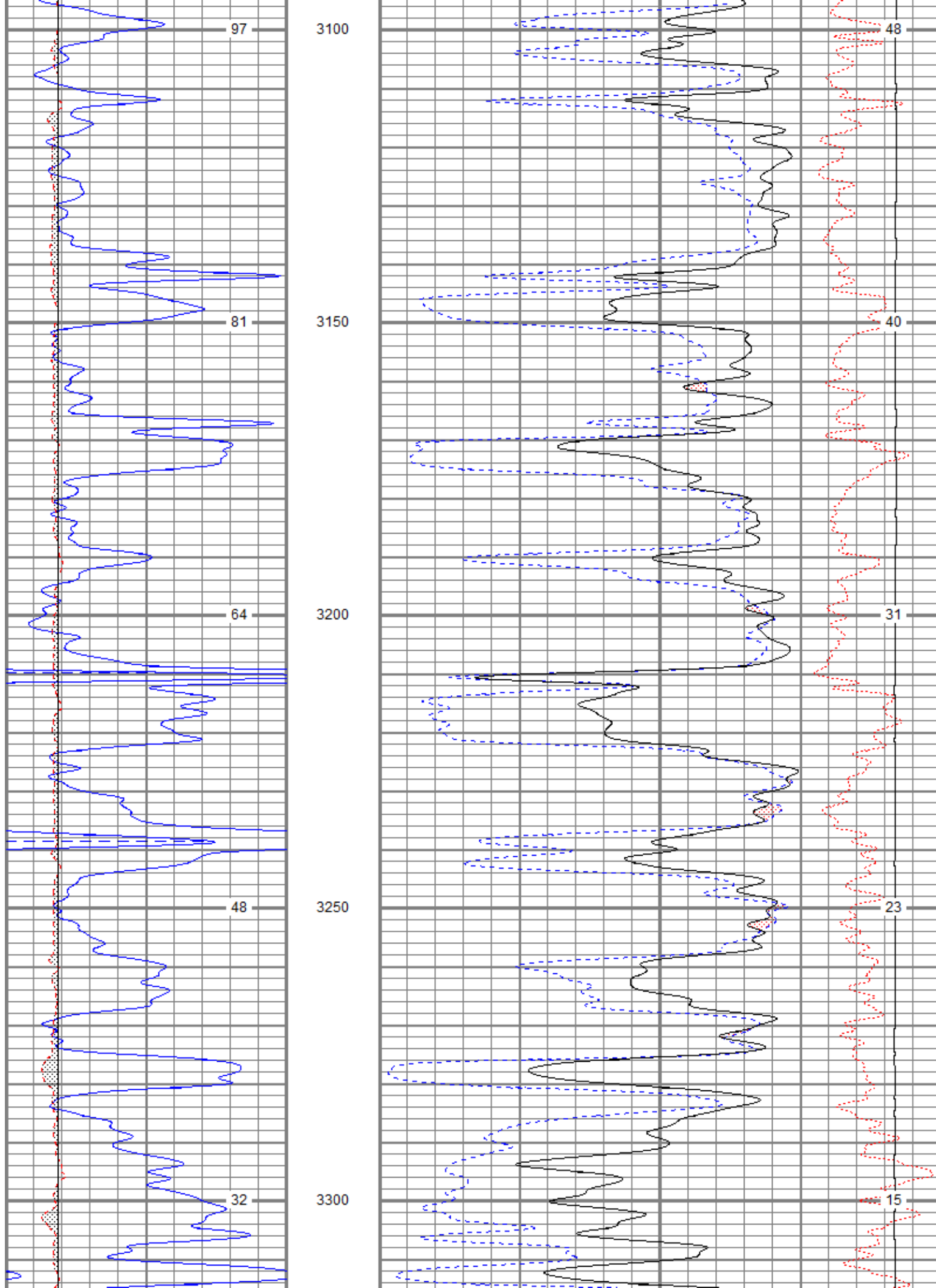
Database File oacress7on.db
 Dataset Pathname pass2.1
 Presentation Format kcdnl
 Dataset Creation Sat Jun 16 17:52:57 2018
 Charted by Depth in Feet scaled 1:240

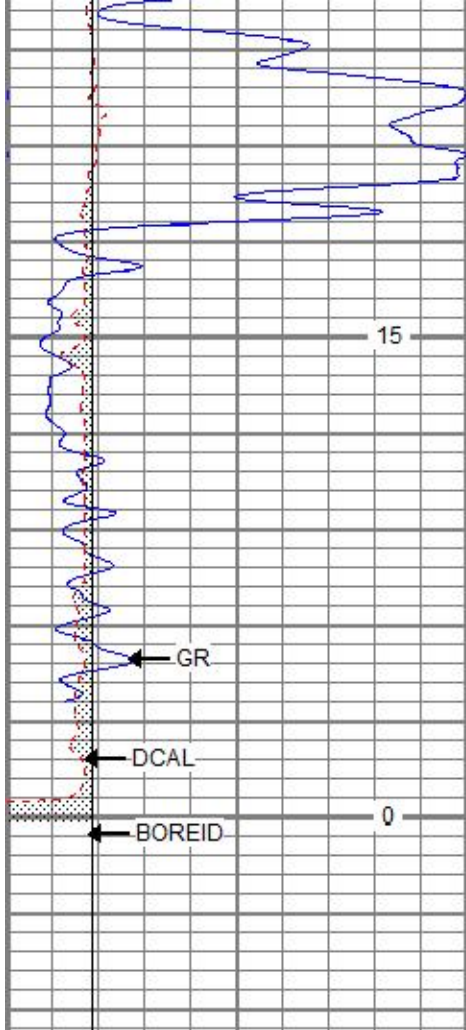
0	GR (GAPI)	150
6	DCAL (in)	16
6	BOREID (in)	16
6	BOREID (in)	16
TBHV (ft3)		

30	NPOR (pu)	-10
30	DPOR (pu)	-10
70	DPOR (pu)	30
-0.25	RHOC (g/cc)	0.25
8000	LTEN (lb)	0
ABHV (ft3)		





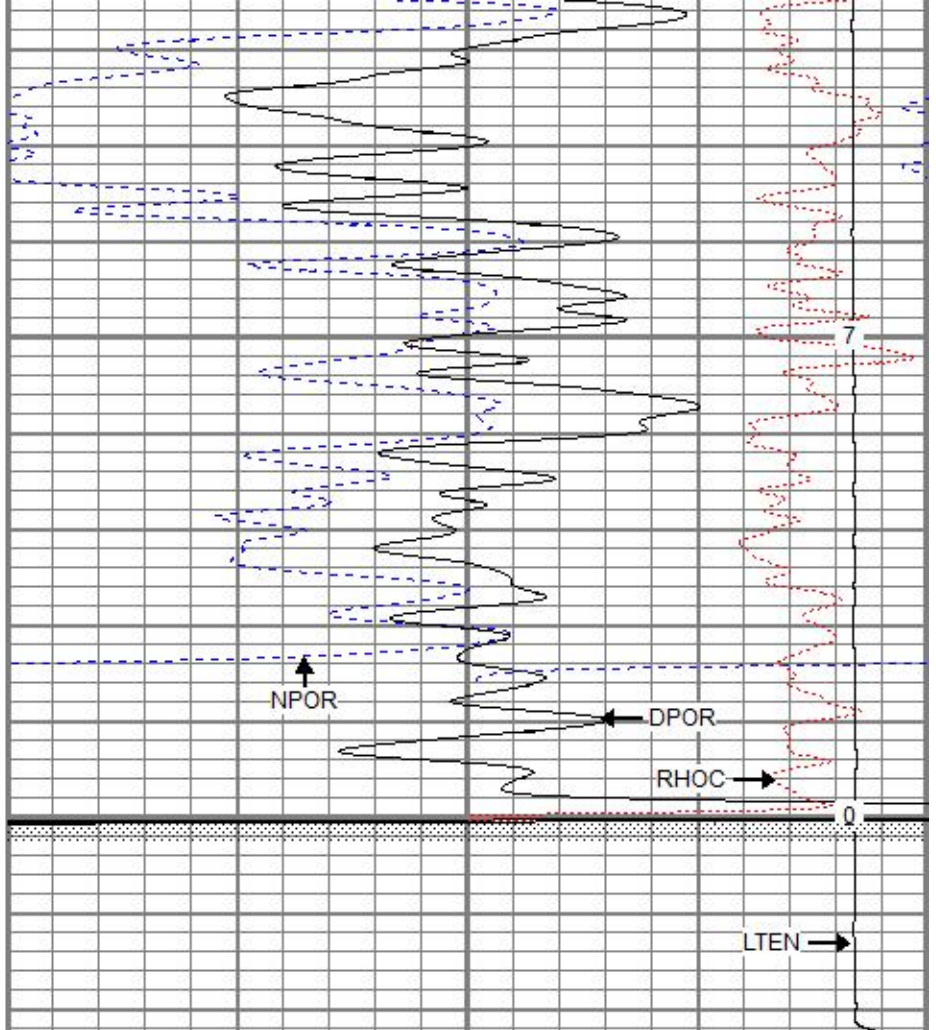




3350

3400

0	GR (GAPI)	150
6	DCAL (in)	16
6	BOREID (in)	16
6	BOREID (in)	16
		TBHV (ft3)



30	NPOR (pu)	-10
30	DPOR (pu)	-10
70	DPOR (pu)	30
-0.25	RHOC (g/cc)	0.25
8000	LTEN (lb)	0
		ABHV (ft3)

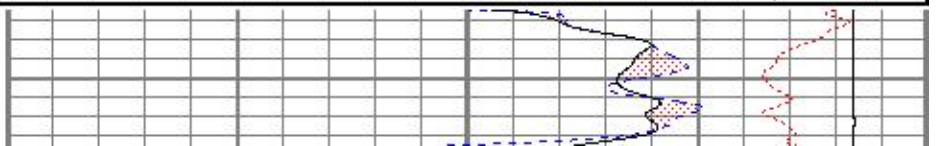
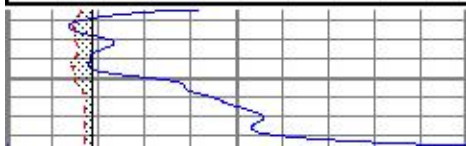


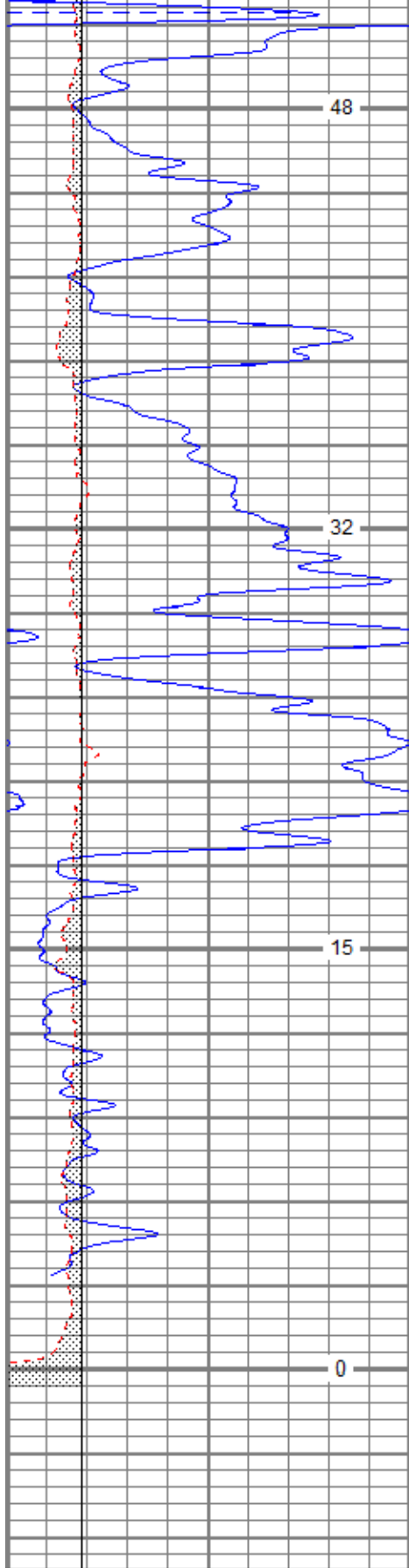
REPEAT SECTION

Database File oacress7oh.db
 Dataset Pathname pass1.1
 Presentation Format kcdnl
 Dataset Creation Sat Jun 16 17:37:02 2018
 Charted by Depth in Feet scaled 1:240

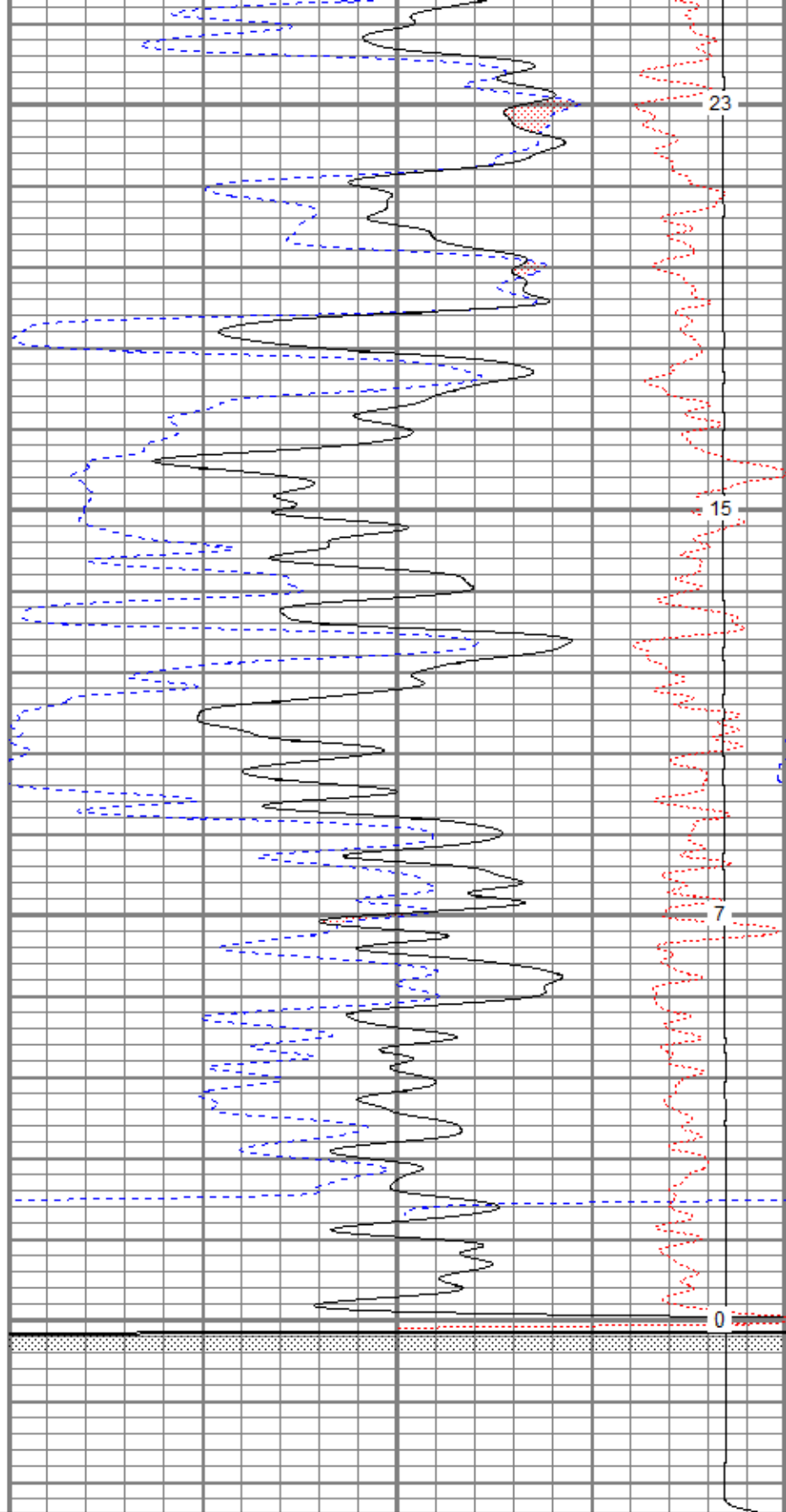
0	GR (GAPI)	150
6	DCAL (in)	16
6	BOREID (in)	16
6	BOREID (in)	16
		TBHV (ft3)

30	NPOR (pu)	-10
30	DPOR (pu)	-10
70	DPOR (pu)	30
-0.25	RHOC (g/cc)	0.25
8000	LTEN (lb)	0
		ABHV (ft3)





3250
3300
3350
3400



23
15
7
0

0	GR (GAPI)	150
6	DCAL (in)	16
6	BOREID (in)	16
6	BOREID (in)	16
TBHV (ft3)		

30	NPOR (pu)	-10
30	DPOR (pu)	-10
70	DPOR (pu)	30
-0.25	RHOC (g/cc)	0.25
8000	LTEN (lb)	0
ABHV (ft3)		

Calibration Report

Database File oaccess7oh.db
 Dataset Pathname pass2.1
 Dataset Creation Sat Jun 16 17:52:57 2018

Dual Induction Calibration Report

Serial-Model: 5375-G
 Surface Cal Performed: Mon Jun 04 17:57:18 2018
 Downhole Cal Performed: Mon Jun 04 17:57:18 2018
 After Survey Verification Performed: Mon Jun 04 17:57:18 2018

Surface Calibration

Readings				References			Results	
Loop:	Air	Loop		Air	Loop		m	b
Deep	-0.002	0.655	V	0.000	350.000	mmho/m	532.190	1.293
Medium	0.011	0.730	V	0.000	400.000	mmho/m	555.870	-5.985
Internal:	Zero	Cal		Zero	Cal		m	b
Deep	-0.002	0.654	V	0.000	350.000	mmho/m	532.823	1.314
Medium	0.011	0.731	V	0.000	550.000	mmho/m	763.357	-8.251

Downhole Calibration

Readings				References			Results	
Internal:	Zero	Cal		Zero	Cal		m	b
Deep	0.000	0.000	mmho/m	-0.019	349.565	mmho/m	1.000	0.000
Medium	0.000	0.000	mmho/m	0.024	400.529	mmho/m	1.000	0.000
Shallow	2.433	0.017	V	500.000	2.000	Ohm-m	180.067	-0.524

After Survey Verification

Readings				Targets			Results	
Internal:	Zero	Cal		Zero	Cal		m'	b'
Deep	0.000	0.000	mmho/m	0.000	0.000	mmho/m	1.000	0.000
Medium	0.000	0.000	mmho/m	0.000	0.000	mmho/m	1.000	0.000
Shallow	0.000	0.000	Ohm-m	500.000	2.000	Ohm-m	1.000	0.000

Compensated Density Calibration Report

Serial-Model: 2501DHT-DHT
 Source / Verifier: csv-j12 /
 Master Calibration Performed: Mon Jun 04 16:58:12 2018
 Before Survey Verification Performed:
 After Survey Verification Performed:

Master Calibration

	Density		Far Detector	Near Detector	
Magnesium	1.750	g/cc	711.36	284.22	cps
Aluminum	2.640	g/cc	133.07	180.42	cps
Spine Angle = 74.83			Density/Spine Ratio = 0.512		
	Size		Reading		
Small Ring	7.55	in	8572.55		
Large Ring	14.00	in	11285.70		

Before Survey Verification

Target	Measured
g/cc	g/cc

g/cc
g/ccg/cc
g/cc

After Survey Verification

TargetMeasuredg/cc
g/cc
g/ccg/cc
g/cc
g/cc

Gamma Ray Calibration Report

Serial Number: 2000
 Tool Model: P2000
 Performed: Sun May 06 10:04:13 2018

Calibrator Value: 1.0 GAPI

Background Reading: 0.0 cps
 Calibrator Reading: 1.0 cps

Sensitivity: 0.7000 GAPI/cps

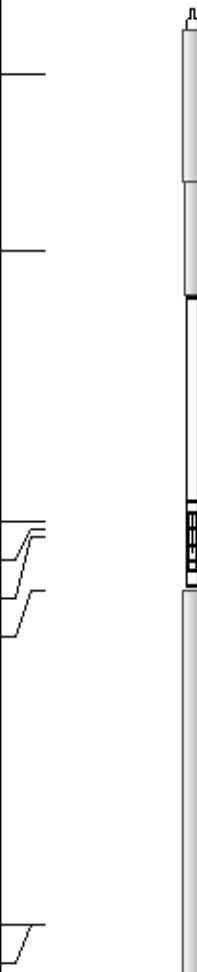
Neutron Calibration Report

Serial Number: 5108
 Tool Model: PROBE
 Performed: Sun Feb 19 03:21:57 2017

Calibrator Value: 1 NAPI

Calibrator Reading: 1 cps

Sensitivity: 1 NAPI/cps

Sensor	Offset (ft)	Schematic	Description	Length (ft)	O.D. (in)	Weight (lb)
NEU	38.37		CHD-None	0.75	1.50	5.00
			NEU-PROBE (5108) Probe	4.92	3.63	85.00
GR	32.57		GR-P2000 (2000)	3.67	3.25	40.00
			CDL-DHT (2501DHT) Digital High Temp CDL Tool	9.69	4.00	201.00
LSD	23.78					
DCAL	23.49					
SSD	23.24					
HEADVOLT	21.47					
SP	10.60		DIL-G (5375) Gearhart	21.47	4.00	345.00
CILD	10.60					

CILM	6.89				
RLL3	1.70				

Dataset: oacress7oh.db: field/well/run1/pass2.1 Total length: 40.49 ft Total weight: 676.00 lb O.D.: 4.00 in	
---	--