



DUAL INDUCTION LOG

Company RAYMOND OIL COMPANY, INC.
 Well #1 J. BAIRD TRUST
 Field WILDCAT
 County THOMAS
 State KANSAS

Company RAYMOND OIL COMPANY, INC.
 Well #1 J. BAIRD TRUST
 Field WILDCAT
 County THOMAS State KANSAS

Location: API # : 15-193-20979-0000
 1127' FSL & 1408' FWL
 NW - NW - SE - SW
 SEC 29 TWP 6S RGE 35W
 Permanent Datum GROUND LEVEL Elevation 3304
 Log Measured From KELLY BUSHING 5' A.G.L.
 Drilling Measured From KELLY BUSHING
 Other Services CDL/CNL MEL
 Elevation K.B. 3309 D.F. 3307 G.L. 3304

Date	11/24/16
Run Number	ONE
Depth Driller	4876
Depth Logger	4876
Bottom Logged Interval	4874
Top Log Interval	00
Casing Driller	8 5/8"@300'
Casing Logger	304
Bit Size	7 7/8"
Type Fluid in Hole	CHEMICAL MUD
Density / Viscosity	9.3/59
pH / Fluid Loss	9.5/11.2
Source of Sample	FLOWLINE
Rim @ Meas. Temp	.700@80F
Rmf @ Meas. Temp	.525@80F
Rmc @ Meas. Temp	.840@80F
Source of Rmf / Rmc	MEASUREMENT
Rim @ BHT	.452@80F
Time Circulation Stopped	2.5 HOURS
Time Logger on Bottom	2:00 A.M.
Maximum Recorded Temperature	124F
Equipment Number	922339
Location	HAYS, KANSAS
Recorded By	JEFF LUEBBERS
Witnessed By	KIM SHOEMAKER

<<< Fold Here >>>

All interpretations are opinions based on inferences from electrical or other measurements and we cannot and do not guarantee the accuracy or correctness of any interpretation, and we shall not, except in the case of gross or willful negligence on our part, be liable or responsible for any loss, costs, damages, or expenses incurred or sustained by anyone resulting from any interpretation made by any of our officers, agents or employees. These interpretations are also subject to our general terms and conditions set out in our current Price Schedule.

Comments

THANK YOU FOR USING ELI WIRELINE HAYS, KANSAS (785) 628-6395
 DIRECTIONS
 LEVANT, KS. & I-70, 9N. ON "CR 11" TO "RD. Z", 3W., N. INTO



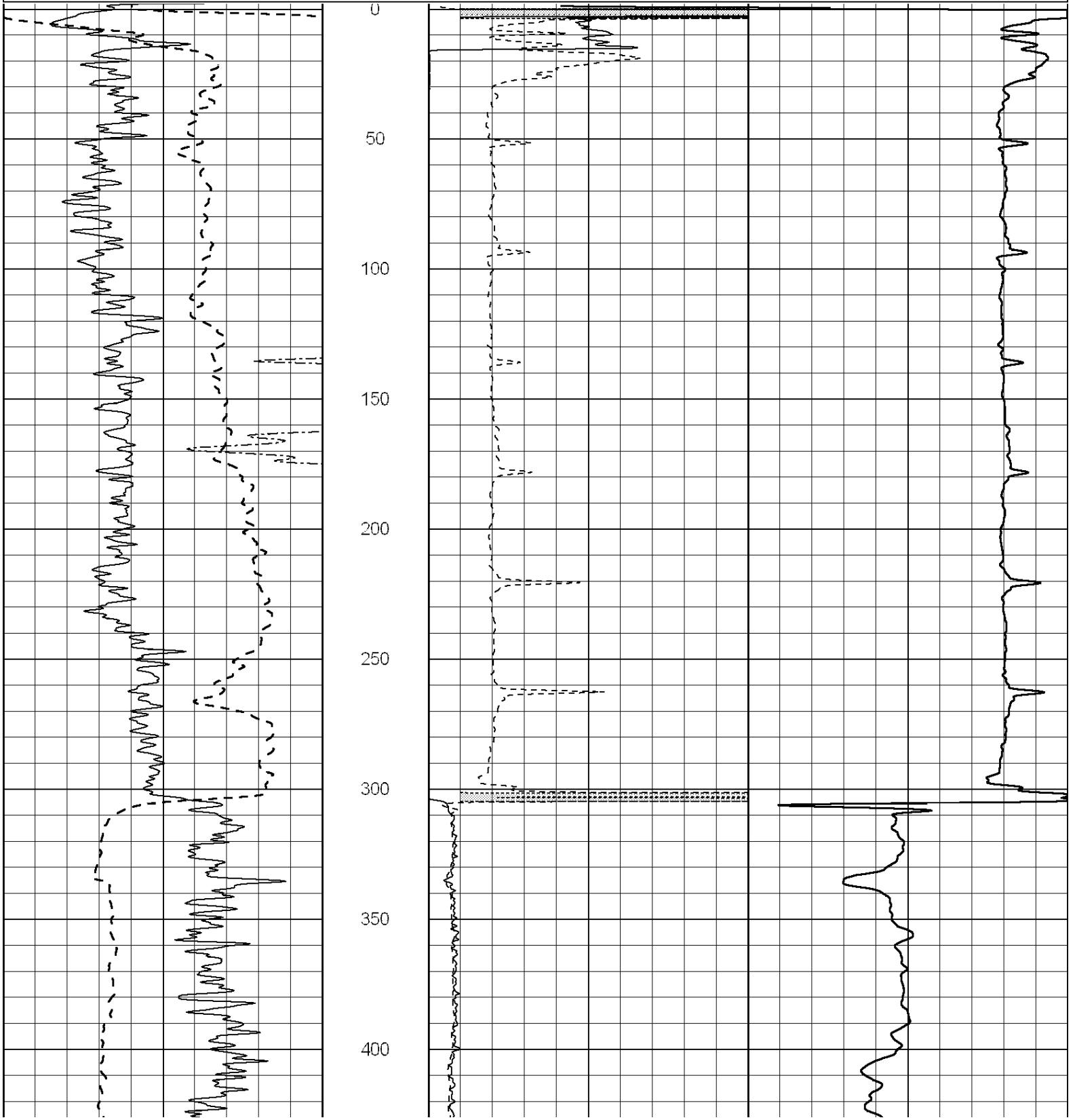
MAIN SECTION

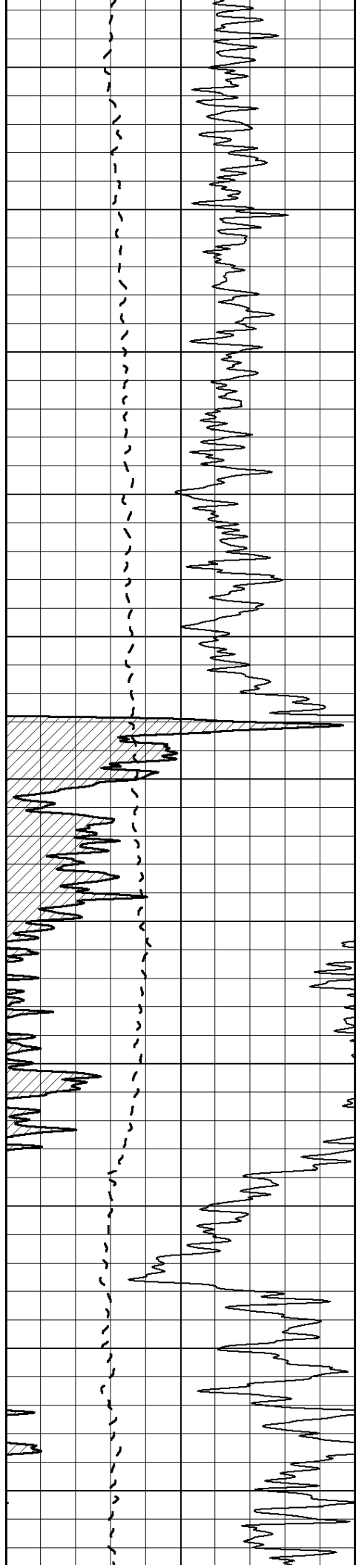
Database File: 1328ddn.db
 Dataset Pathname: pass3.3
 Presentation Format: dil2
 Dataset Creation: Thu Nov 24 03:32:27 2016 by Calc SOC 120430
 Charted by: Depth in Feet scaled 1:600

0	Gamma Ray (GAPI)	150
-100	SP (mV)	100
0	RWA (Ohm-m)	1

0	RLL3 (Ohm-m)	50
0	RILD (Ohm-m)	50
1000	CILD (mmho/m)	0

50	RILD X10 (Ohm-m)	500
50	RLL3 X10 (Ohm-m)	500





450

500

550

600

650

700

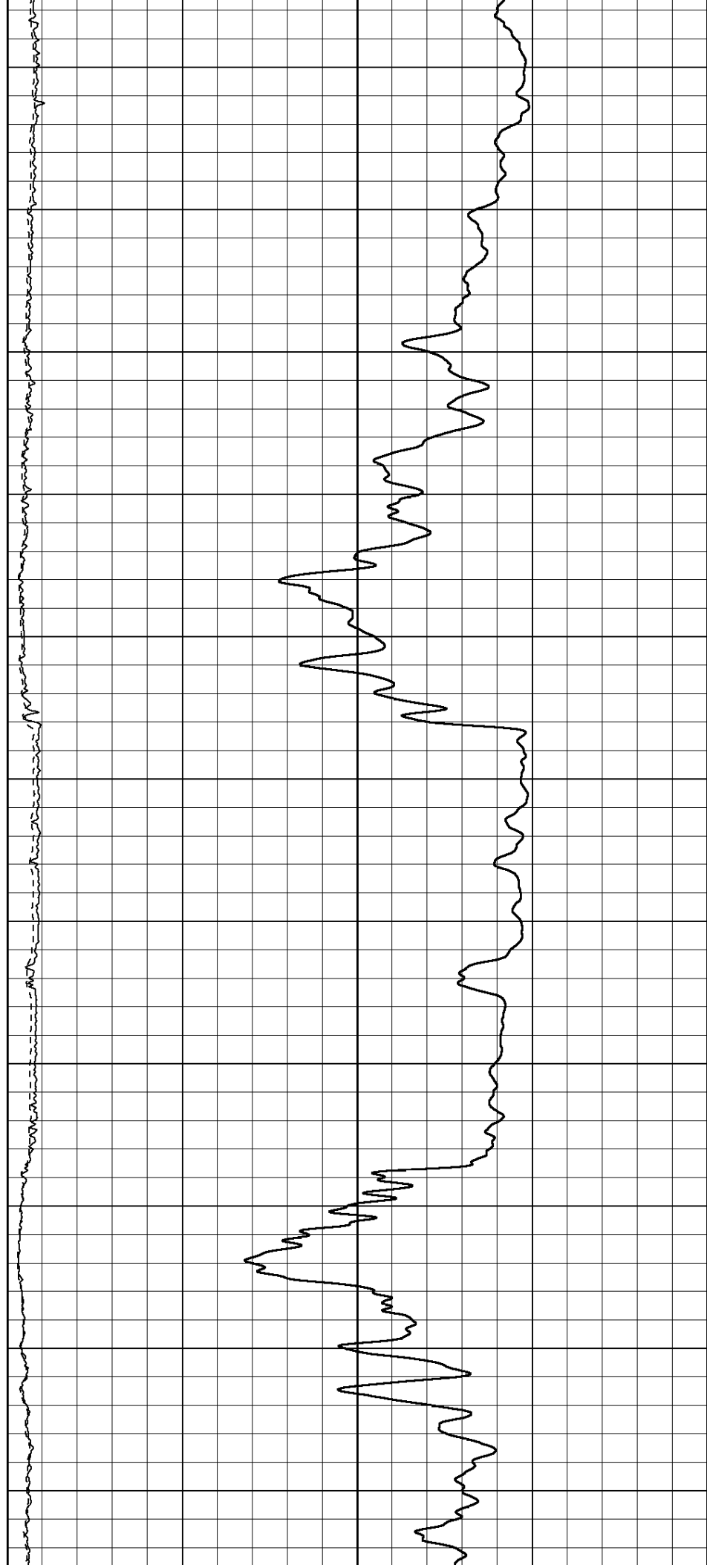
750

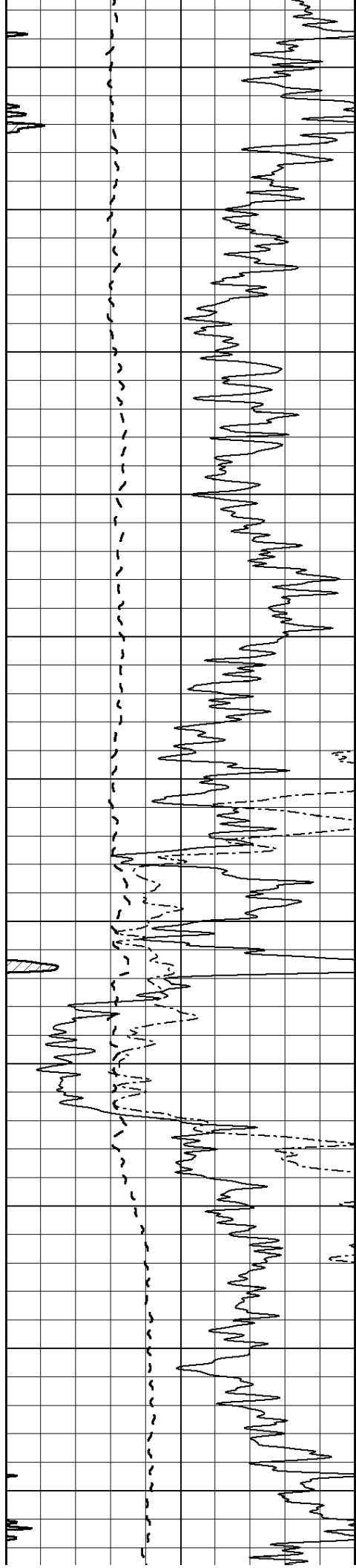
800

850

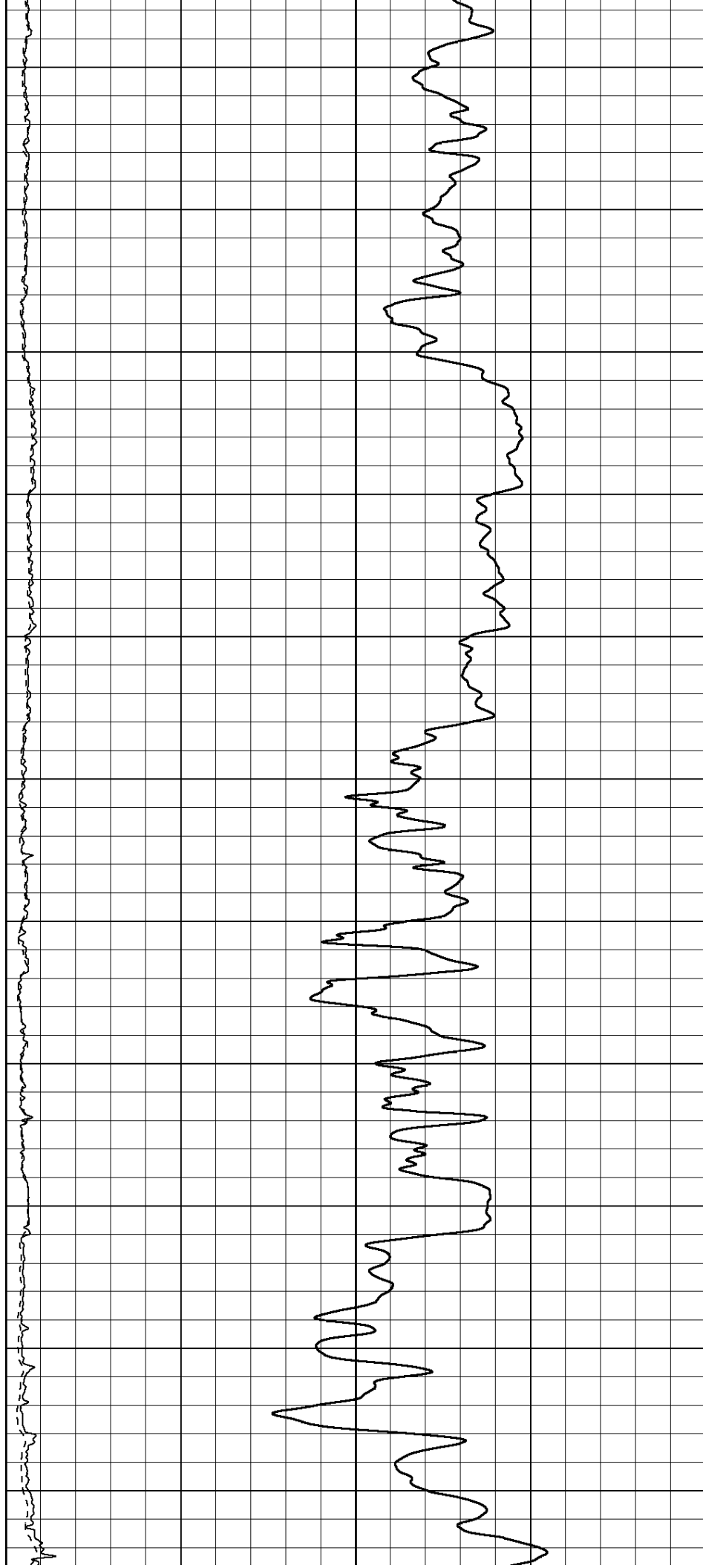
900

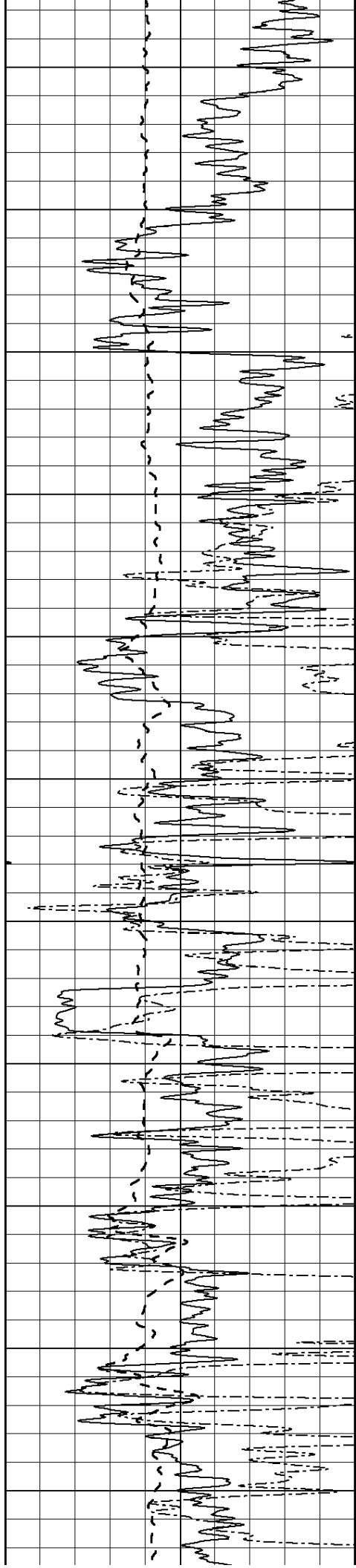
950





1000
1050
1100
1150
1200
1250
1300
1350
1400
1450
1500





1550

1600

1650

1700

1750

1800

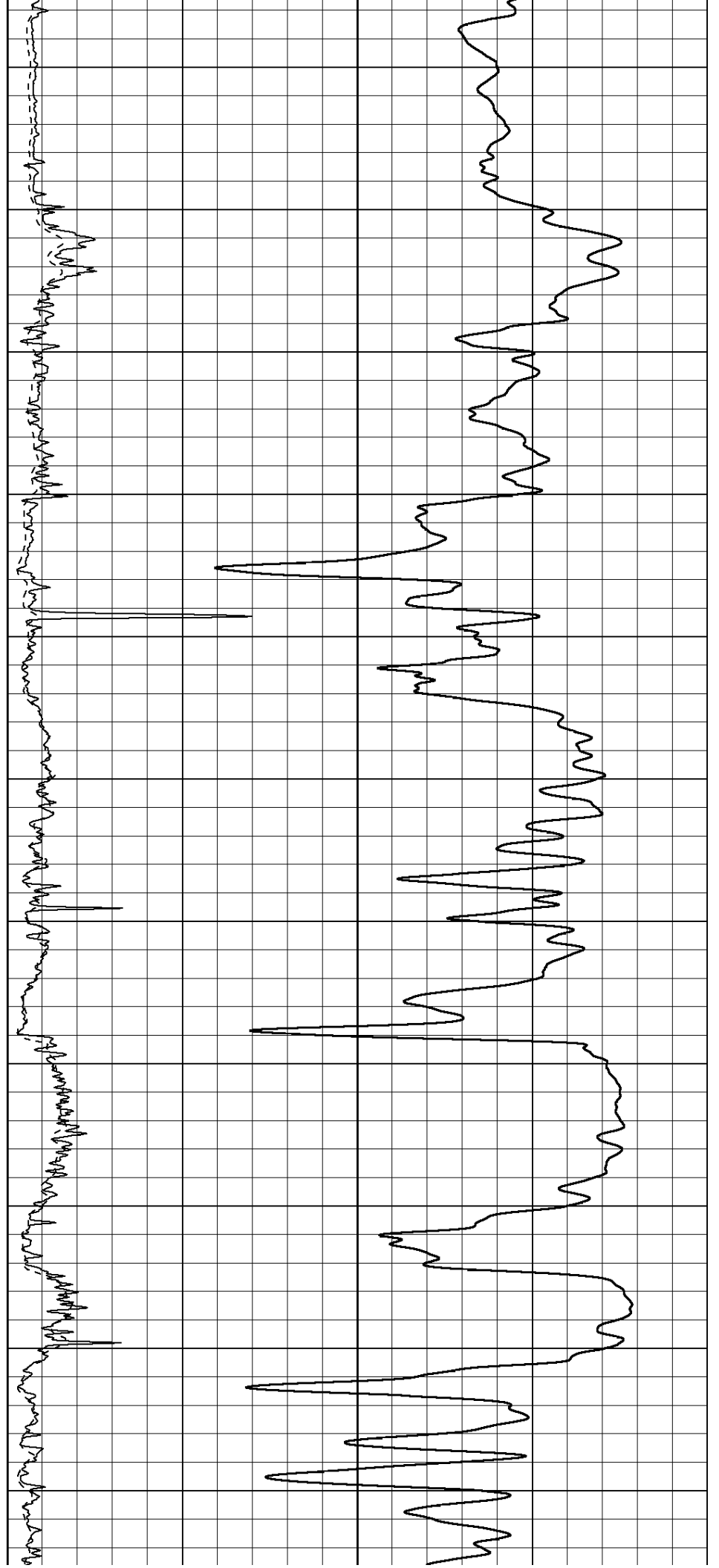
1850

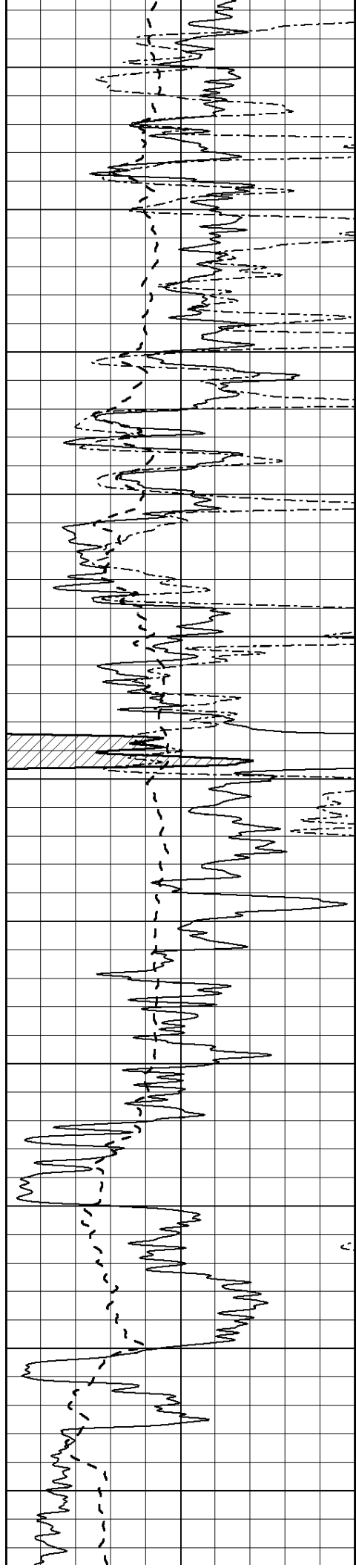
1900

1950

2000

2050





2100

2150

2200

2250

2300

2350

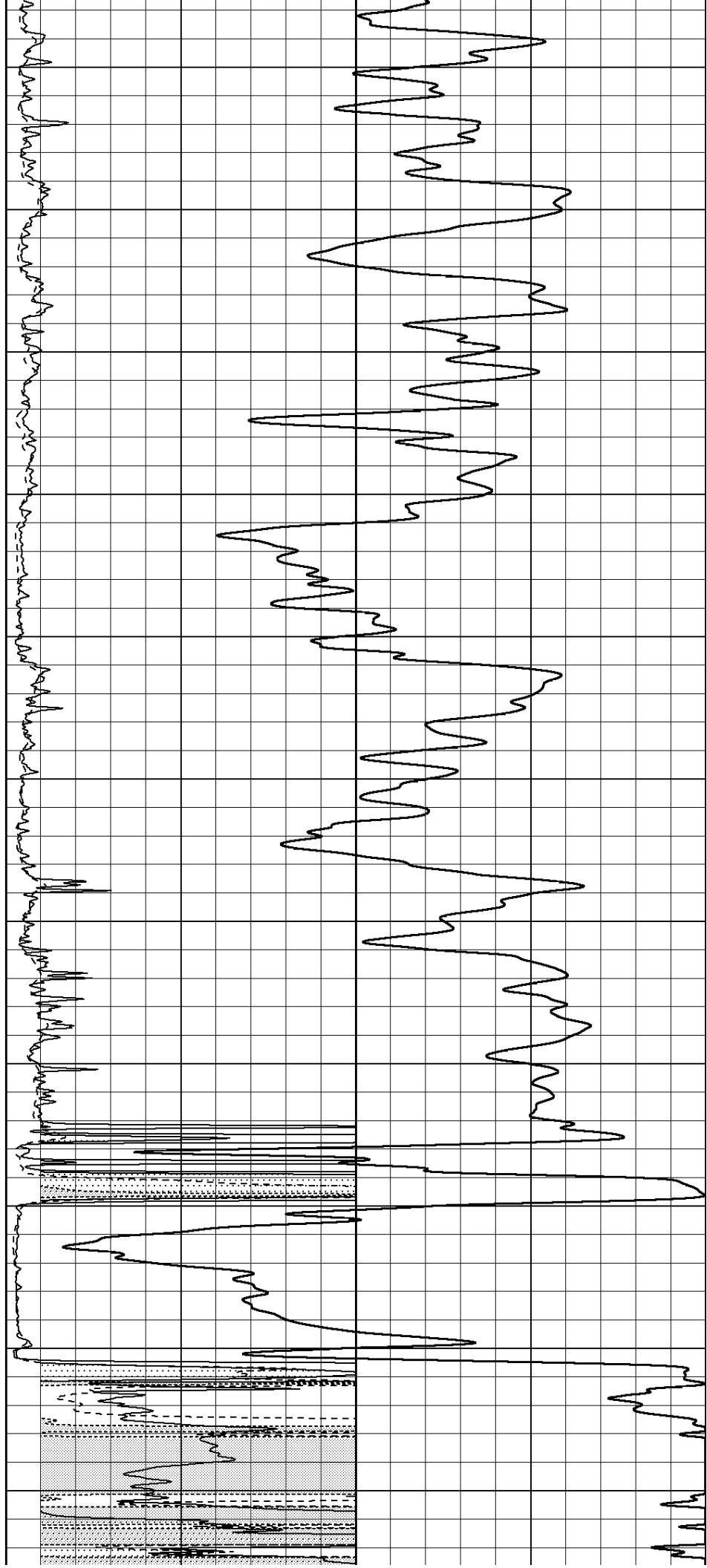
2400

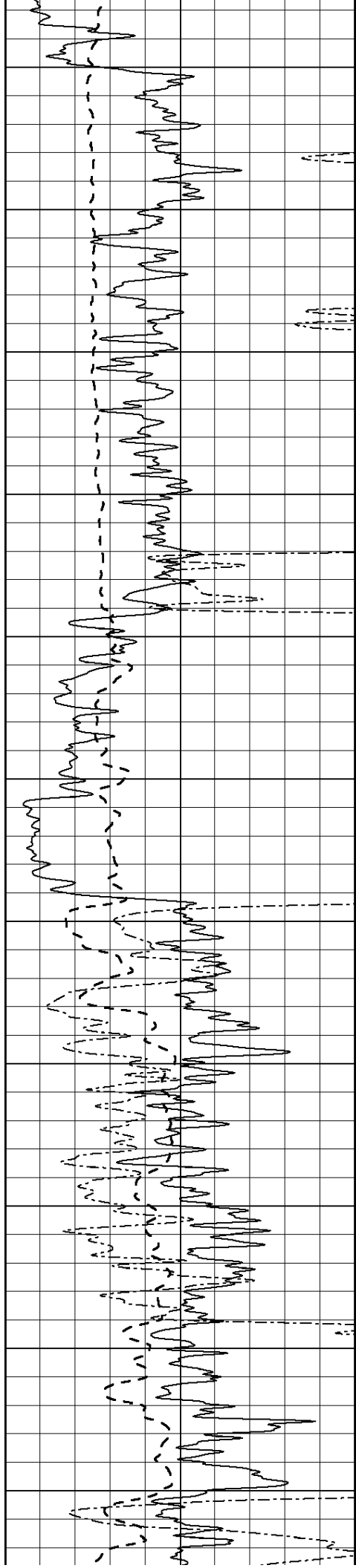
2450

2500

2550

2600





2650

2700

2750

2800

2850

2900

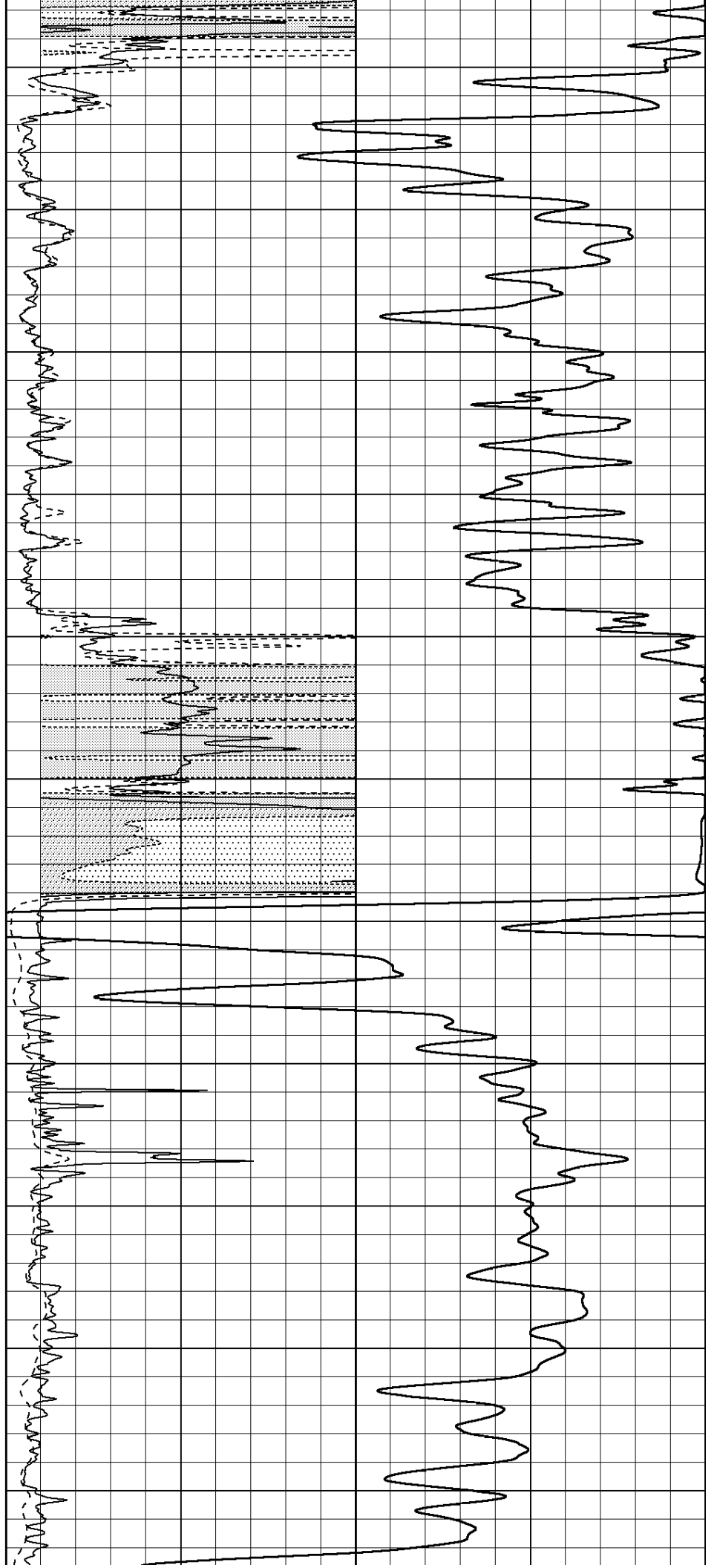
2950

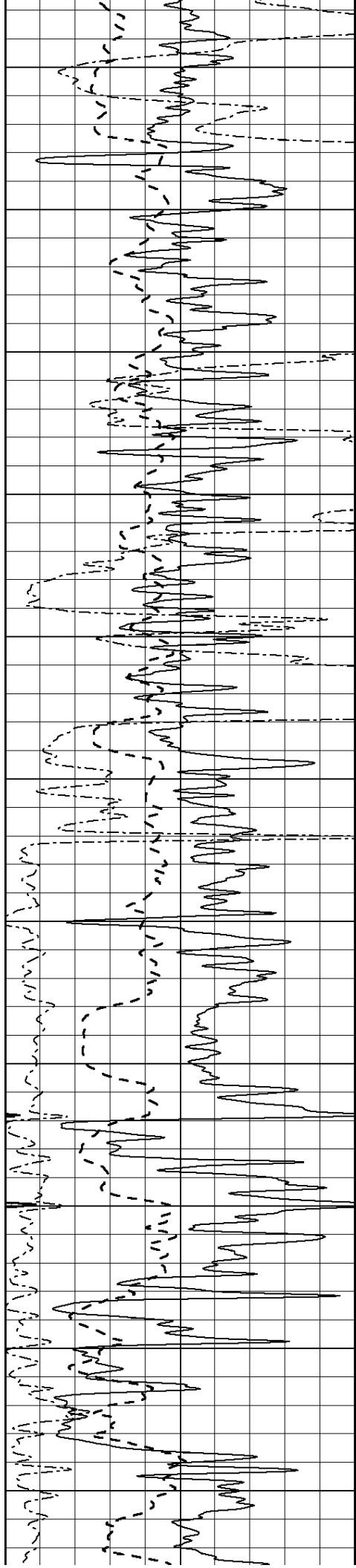
3000

3050

3100

3150





3200

3250

3300

3350

3400

3450

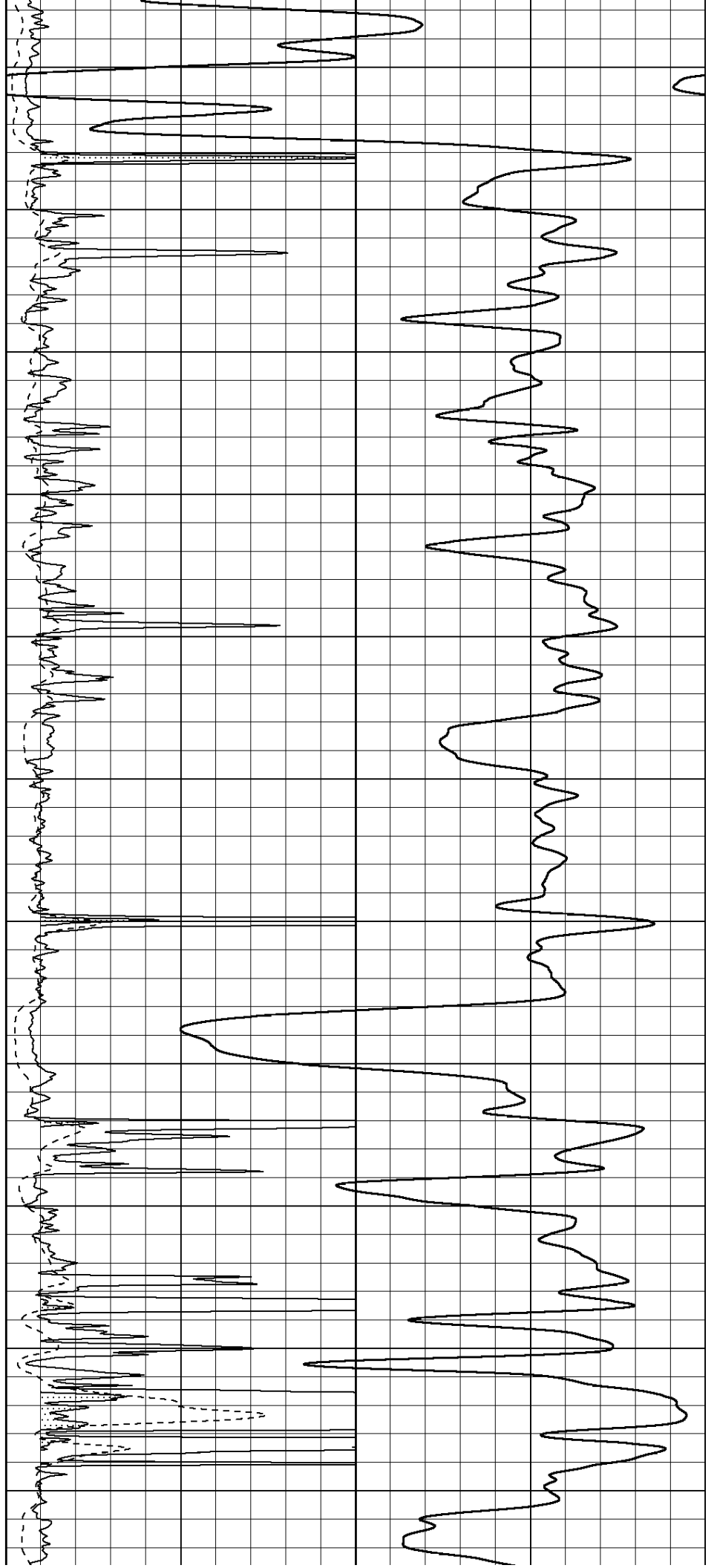
3500

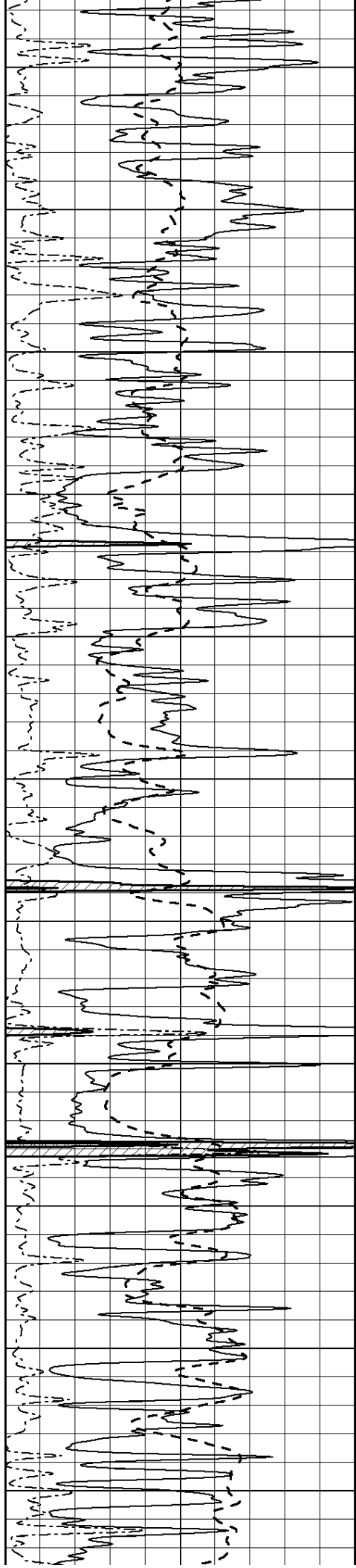
3550

3600

3650

3700





3750

3800

3850

3900

3950

4000

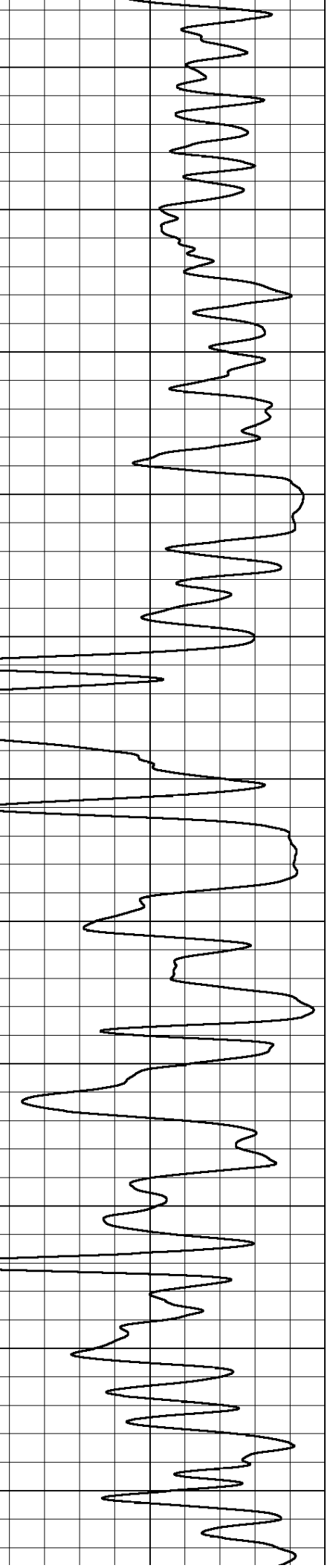
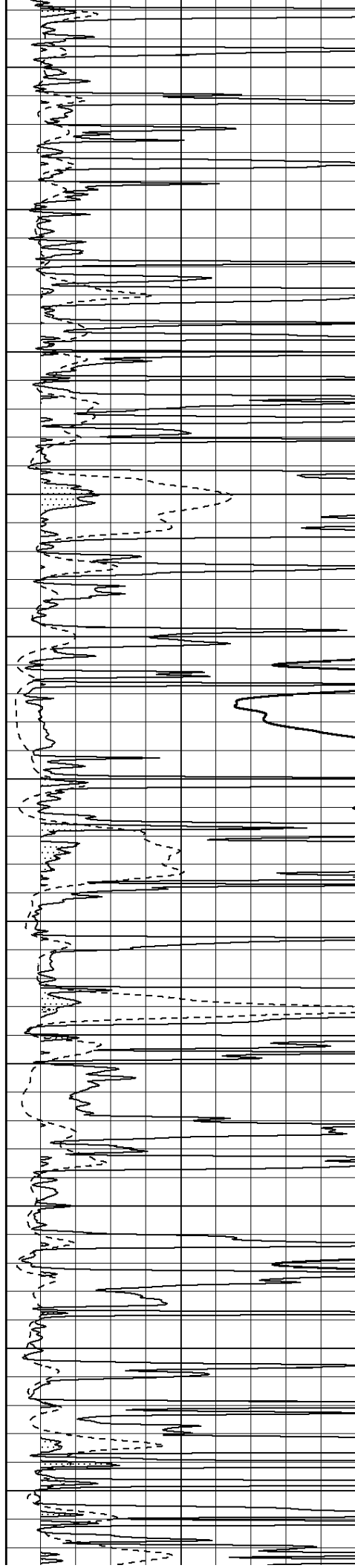
4050

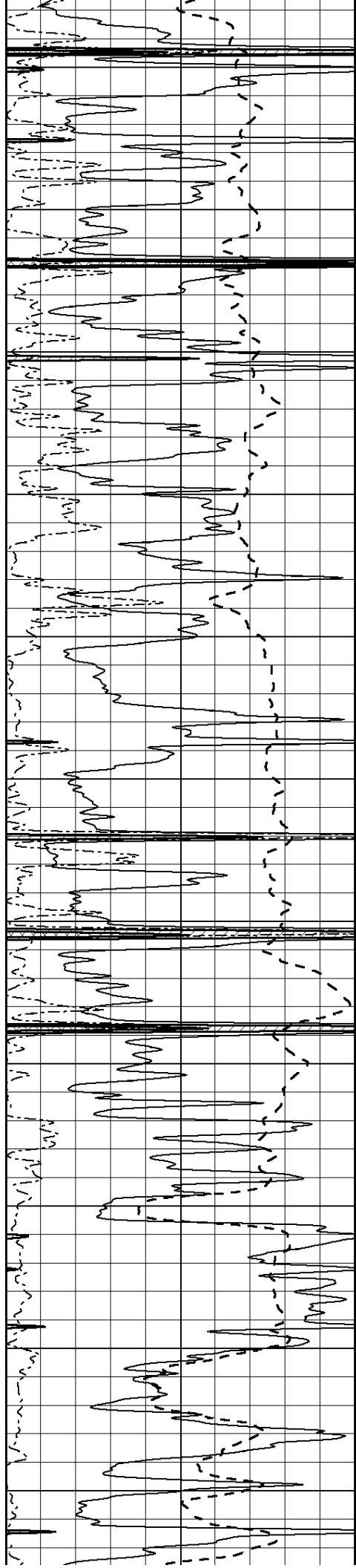
4100

4150

4200

4250





4300

4350

4400

4450

4500

4550

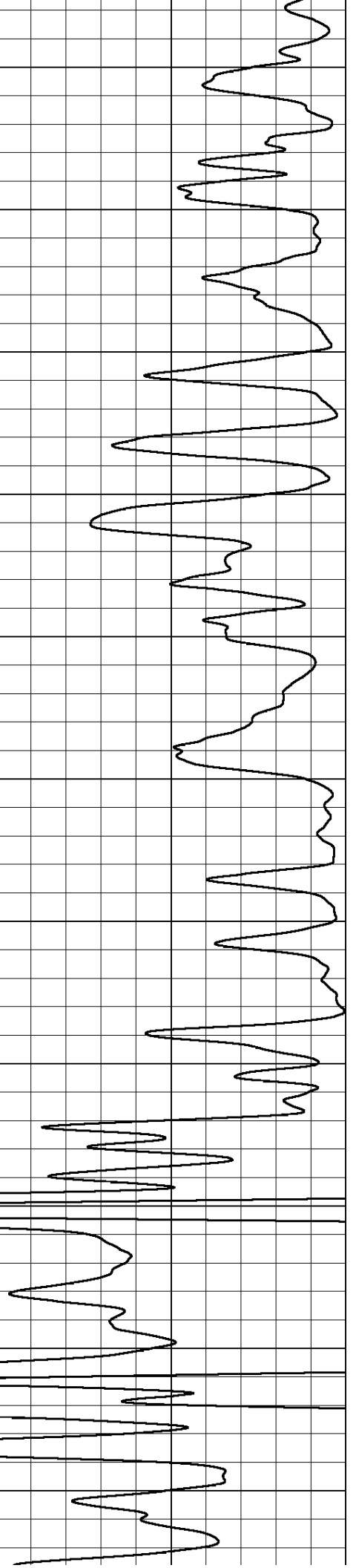
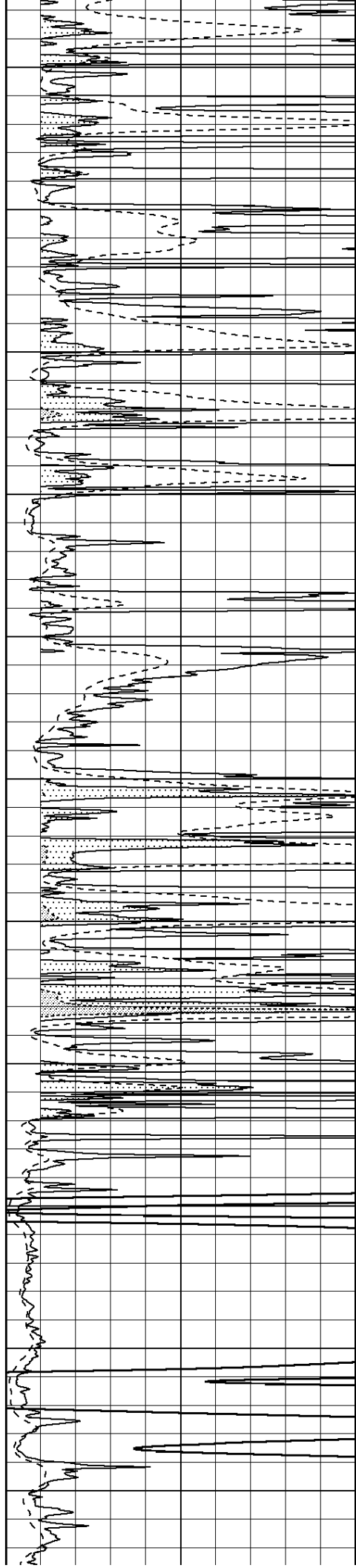
4600

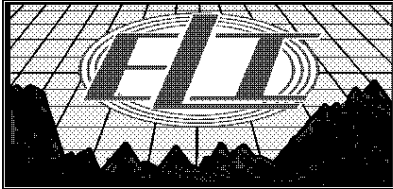
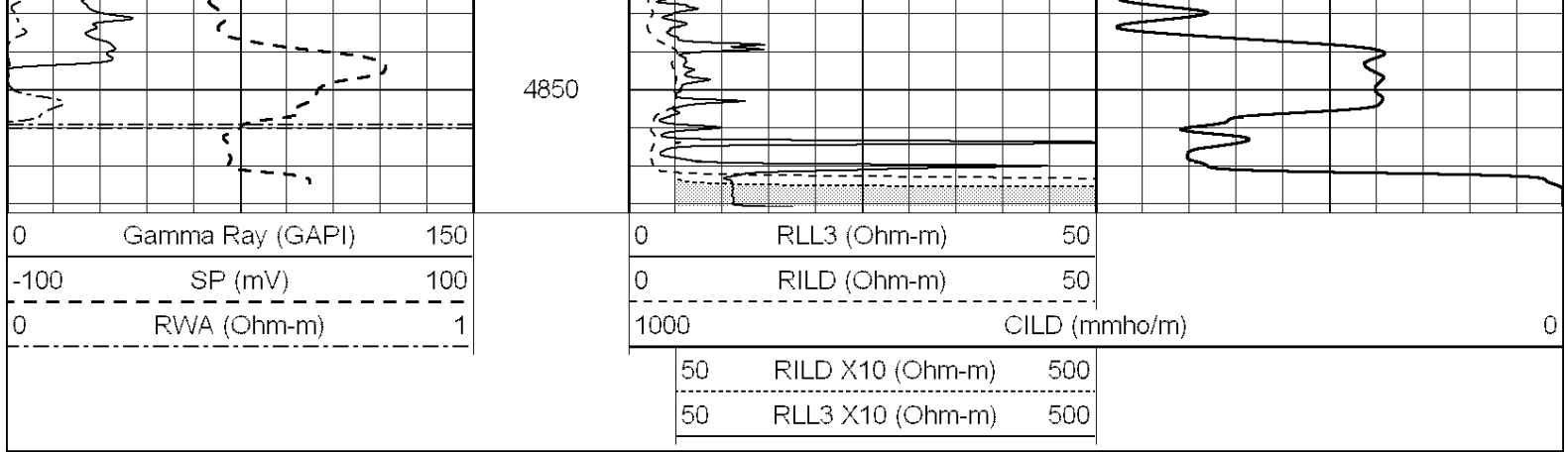
4650

4700

4750

4800

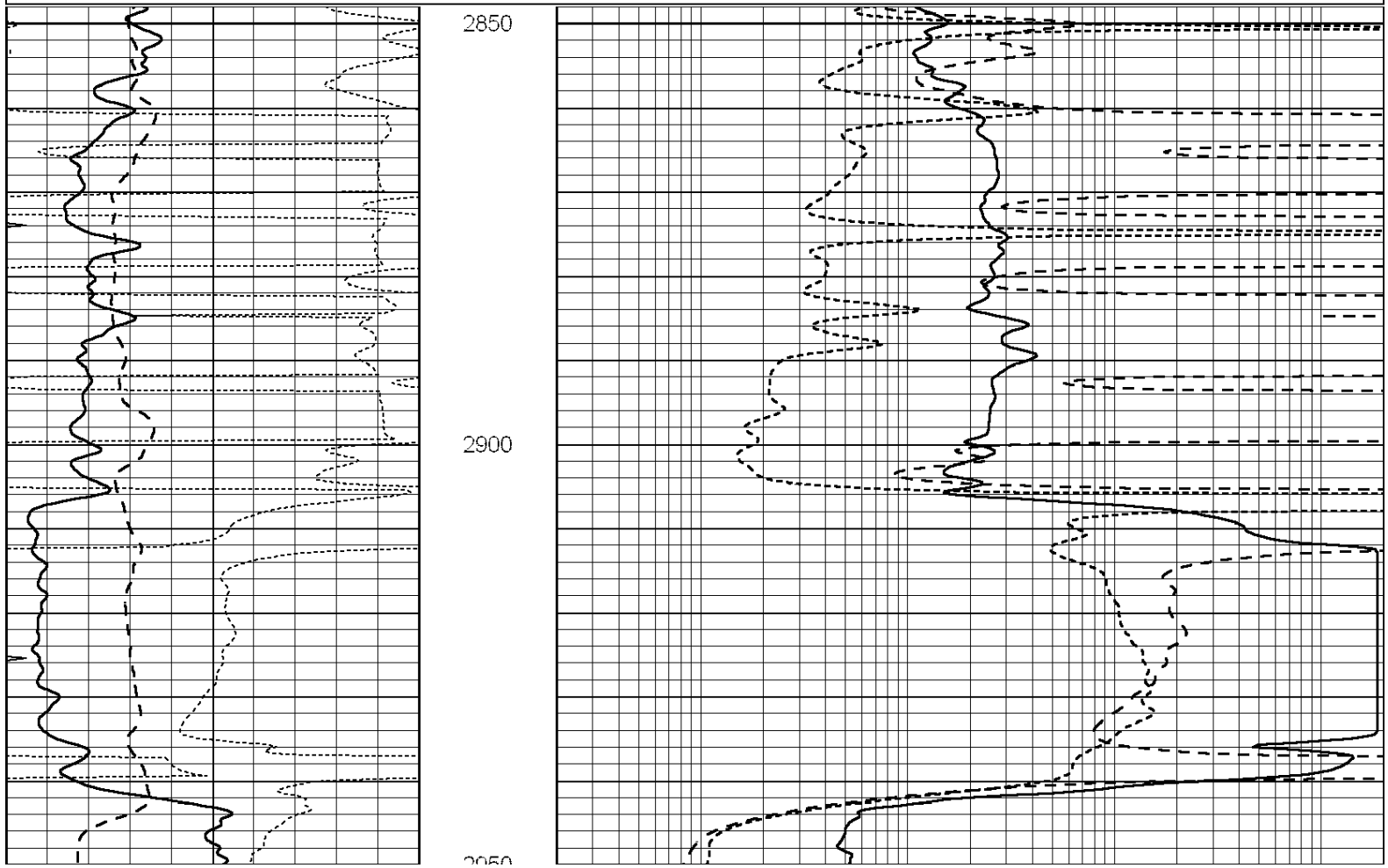


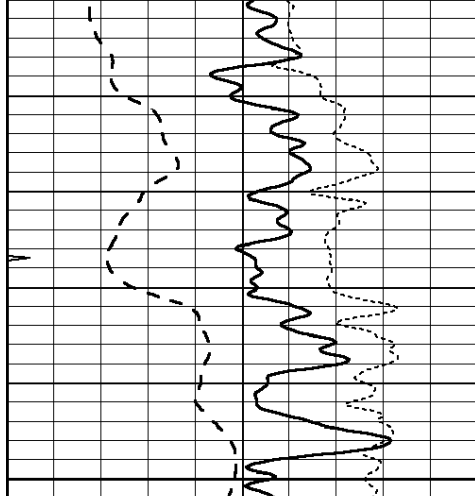


ANHYDRITE

Database File: 1328ddn.db
 Dataset Pathname: pass3.4
 Presentation Format: _dil
 Dataset Creation: Thu Nov 24 03:38:54 2016 by Calc SOC 120430
 Charted by: Depth in Feet scaled 1:240

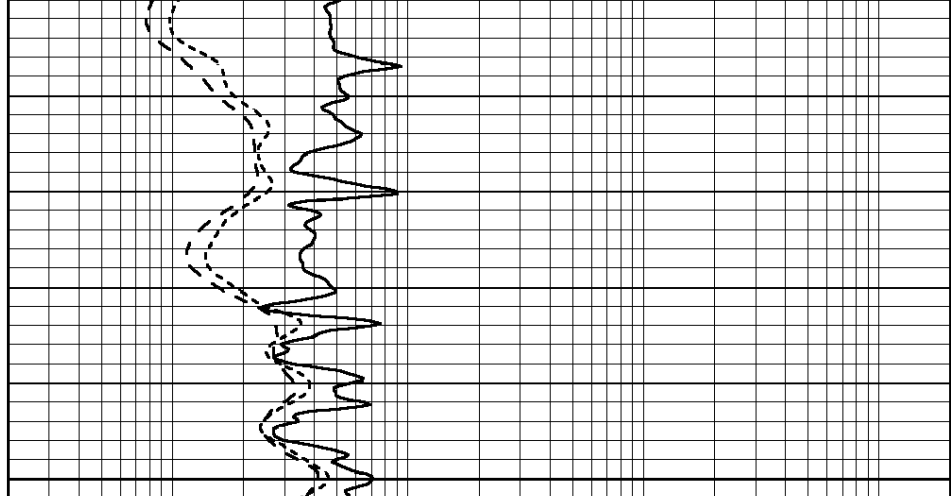
0	GAMMA RAY (GAPI)	150	0.2	SHALLOW GUARD (Ohm-m)	2000
-100	SP (mV)	100	0.2	DEEP INDUCTION (Ohm-m)	2000
-250	Rxo/Rt	50	0.2	MEDIUM INDUCTION (Ohm-m)	2000
0	MINMK	20			



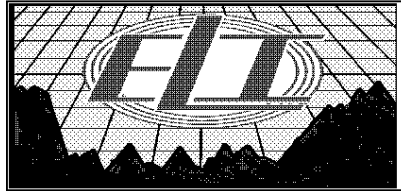


2900
3000

0	GAMMA RAY (GAPI)	150
-100	SP (mV)	100
-250	Rxo/Rt	50
0	MINMK	20



0.2	SHALLOW GUARD (Ohm-m)	2000
0.2	DEEP INDUCTION (Ohm-m)	2000
0.2	MEDIUM INDUCTION (Ohm-m)	2000

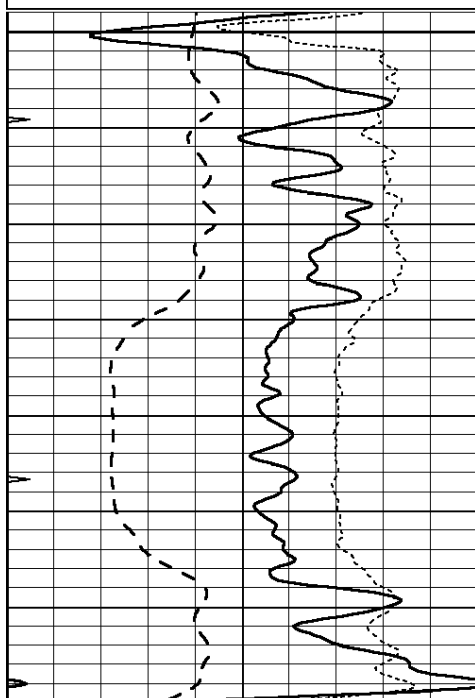


MAIN SECTION

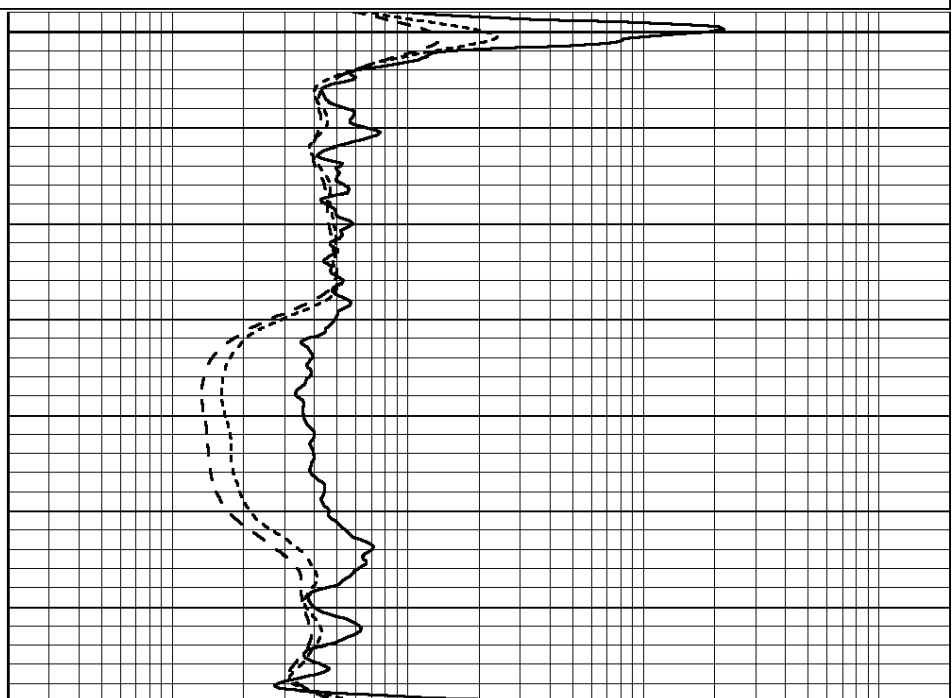
Database File: 1328ddn.db
 Dataset Pathname: pass3.3
 Presentation Format: _dil
 Dataset Creation: Thu Nov 24 03:32:27 2016 by Calc SOC 120430
 Charted by: Depth in Feet scaled 1:240

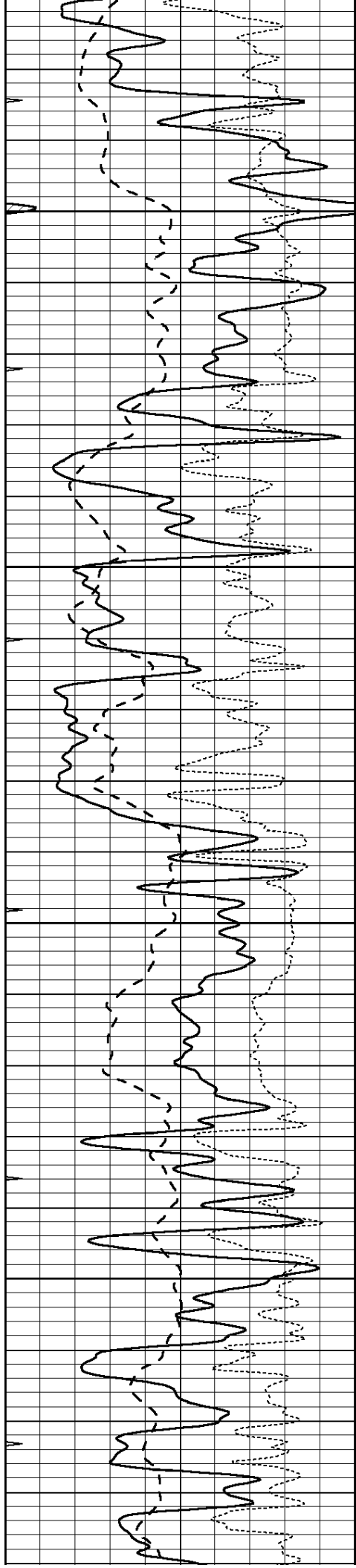
0	GAMMA RAY (GAPI)	150
-100	SP (mV)	100
-250	Rxo/Rt	50
0	MINMK	20

0.2	SHALLOW GUARD (Ohm-m)	2000
0.2	DEEP INDUCTION (Ohm-m)	2000
0.2	MEDIUM INDUCTION (Ohm-m)	2000



3500
3550



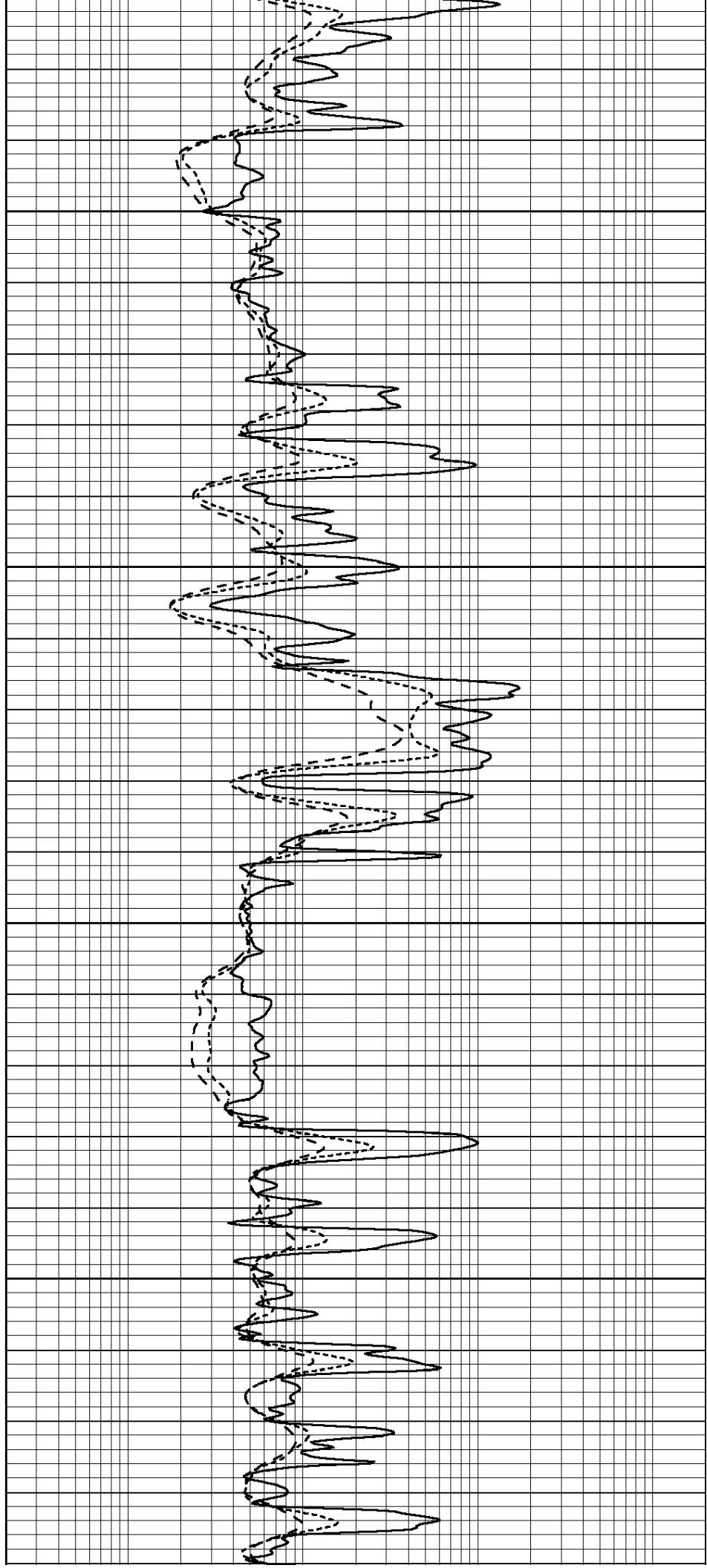


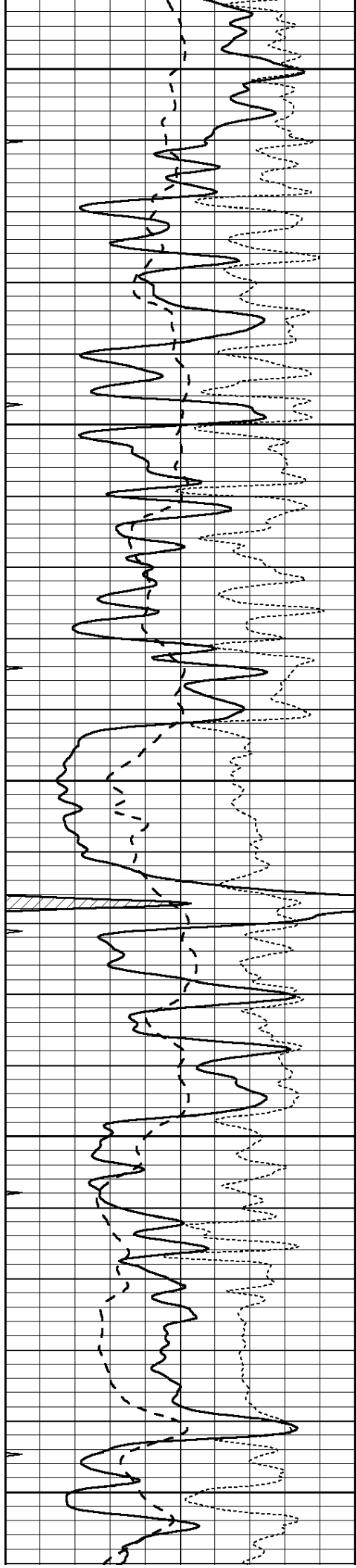
3600

3650

3700

3750





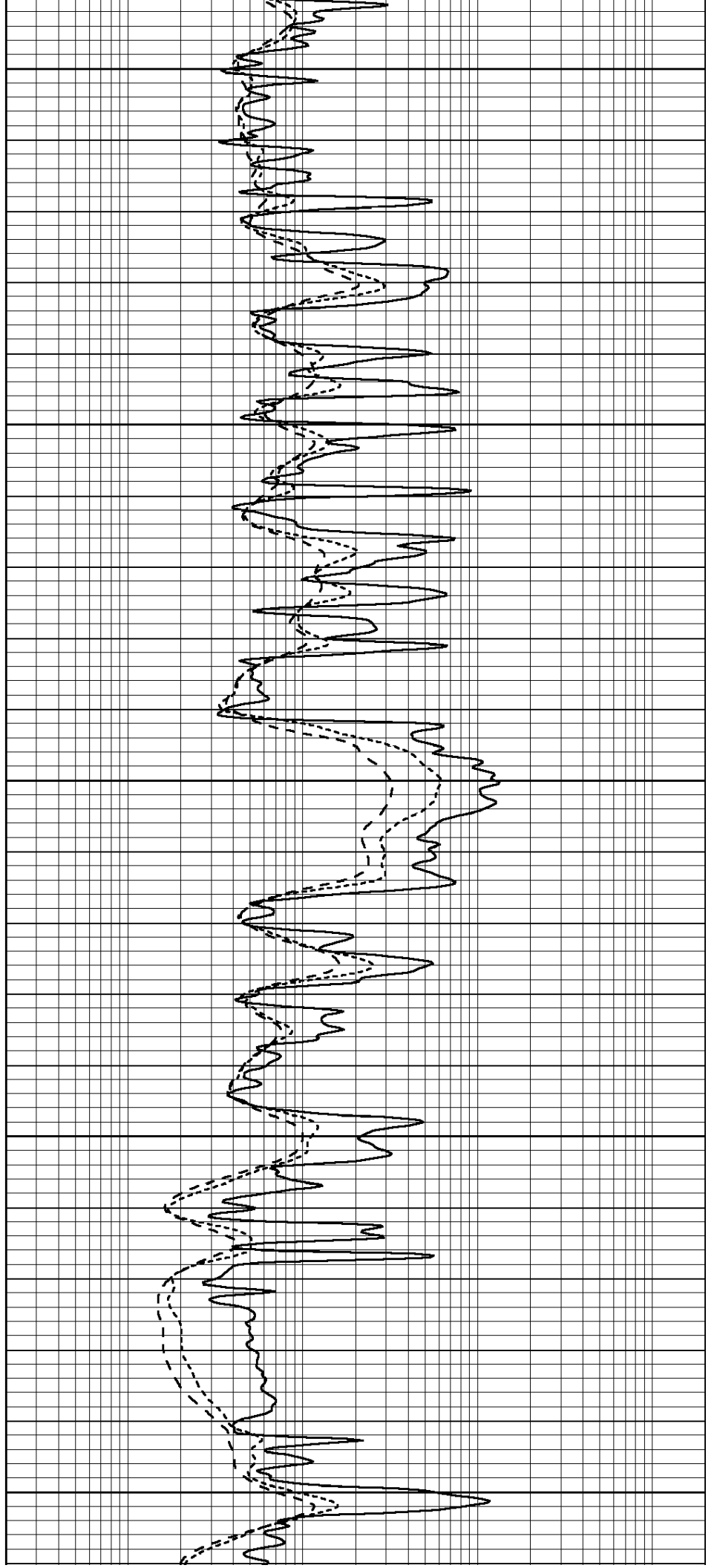
3800

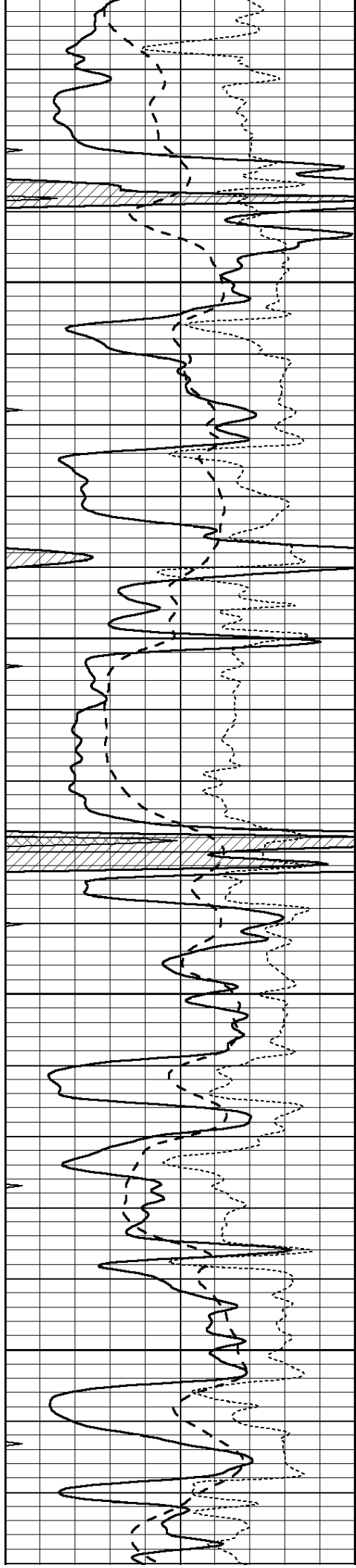
3850

3900

3950

4000



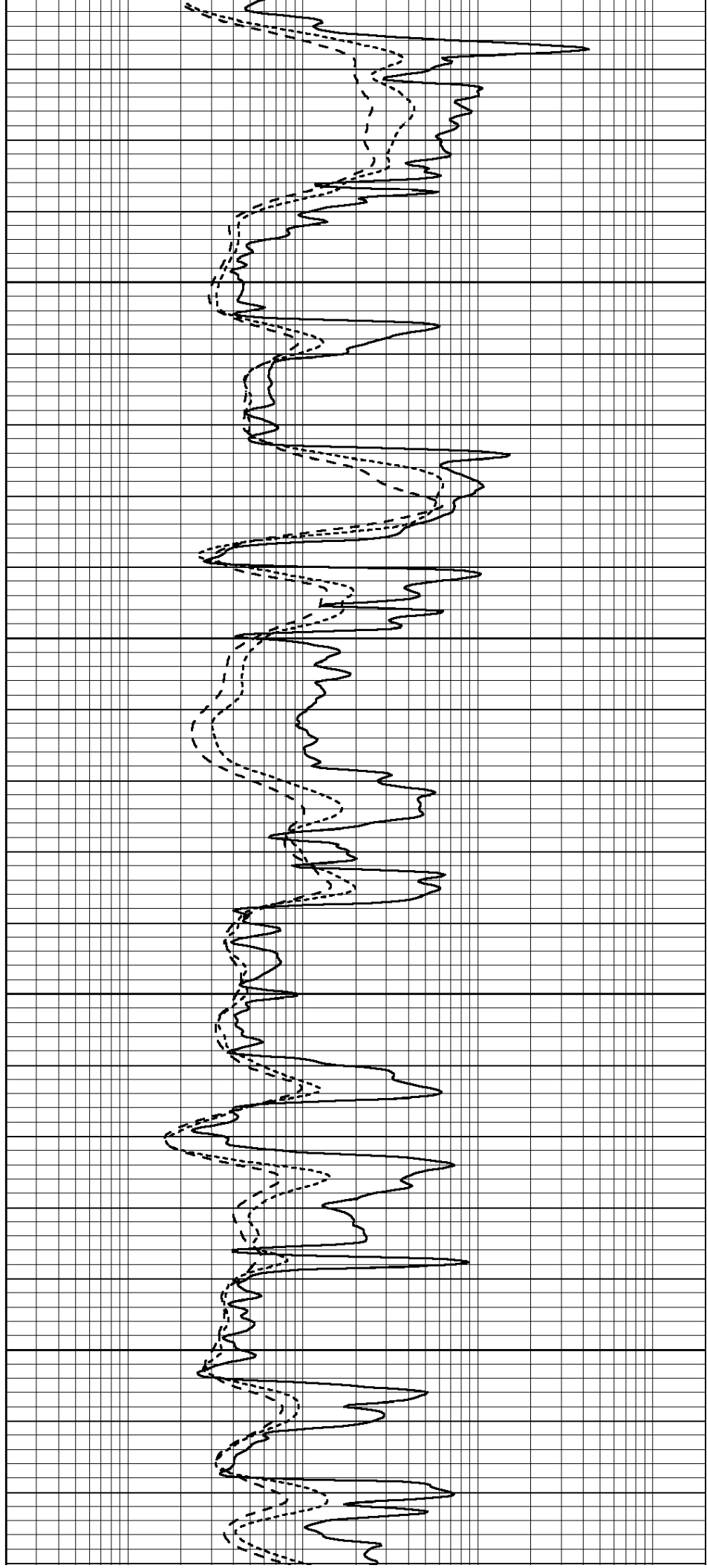


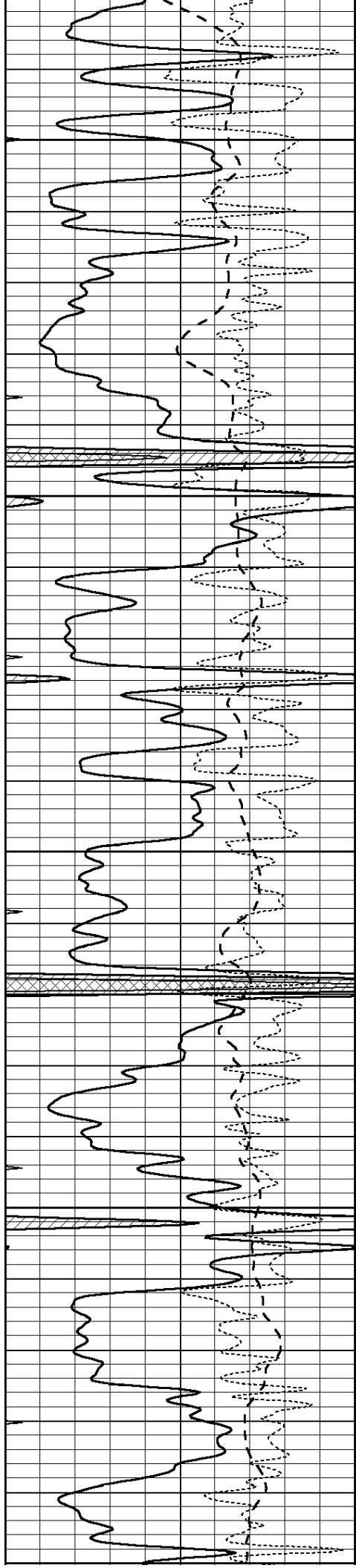
4050

4100

4150

4200





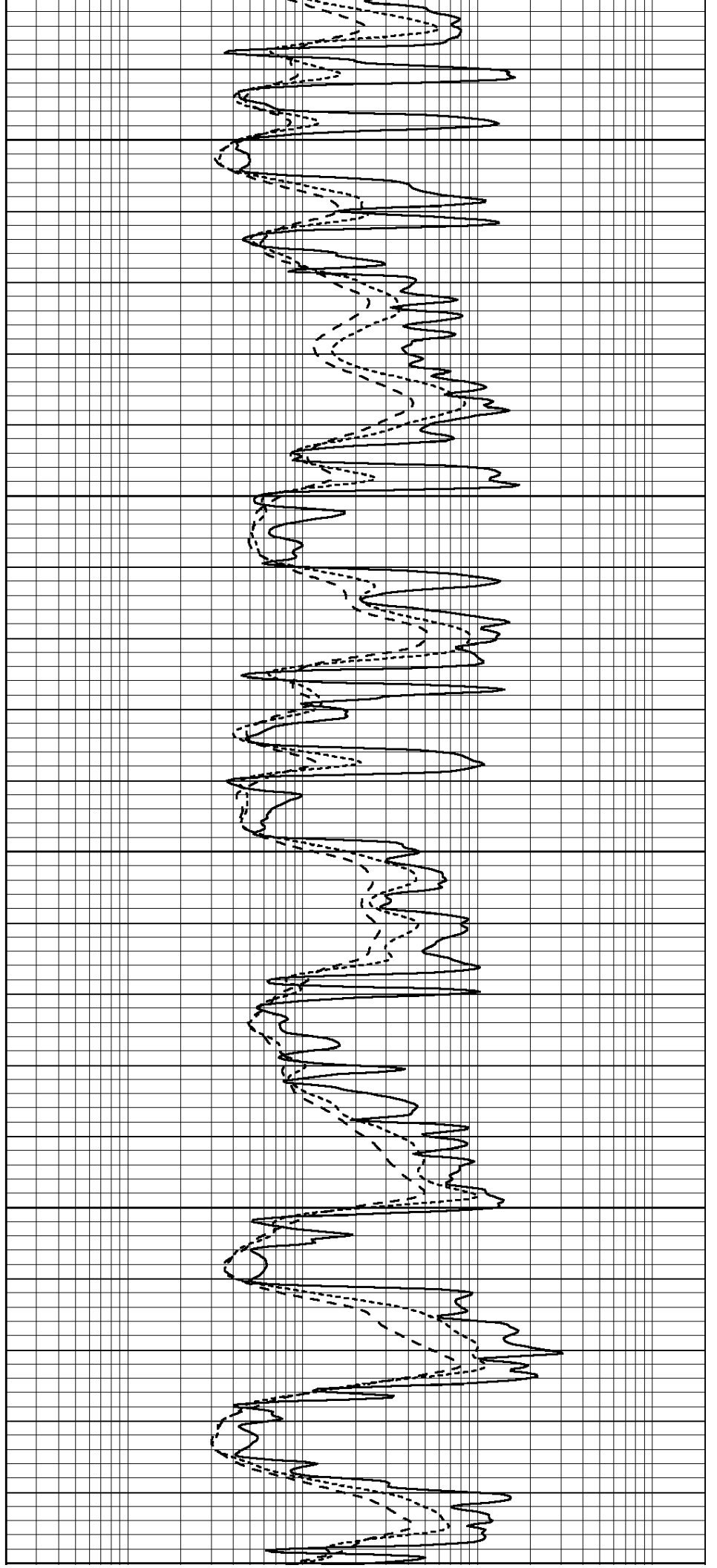
4250

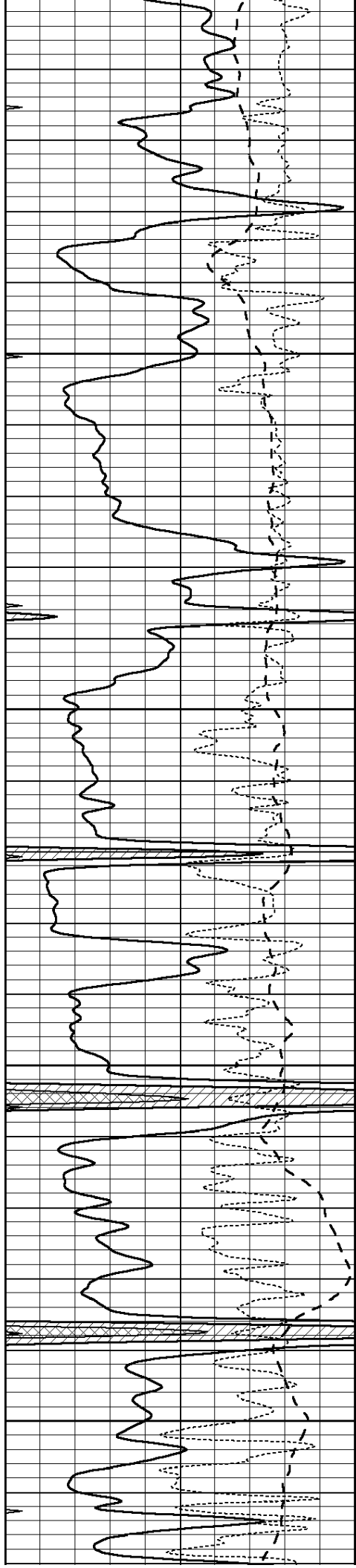
4300

4350

4400

4450





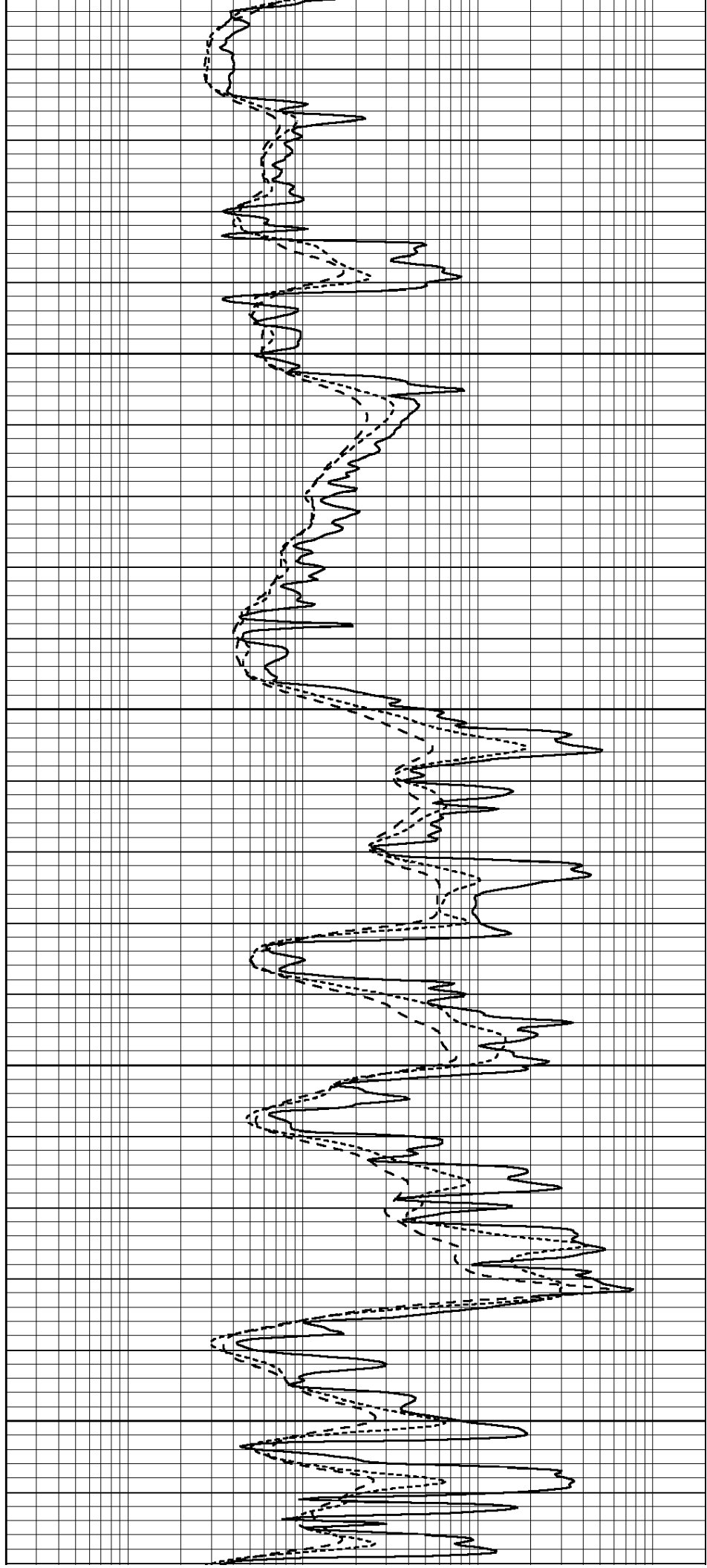
4450

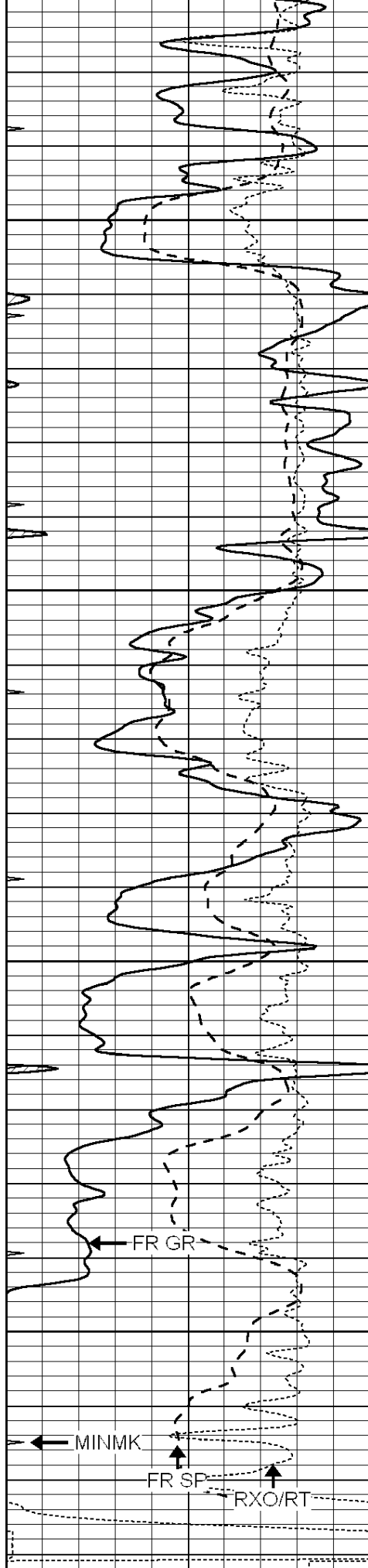
4500

4550

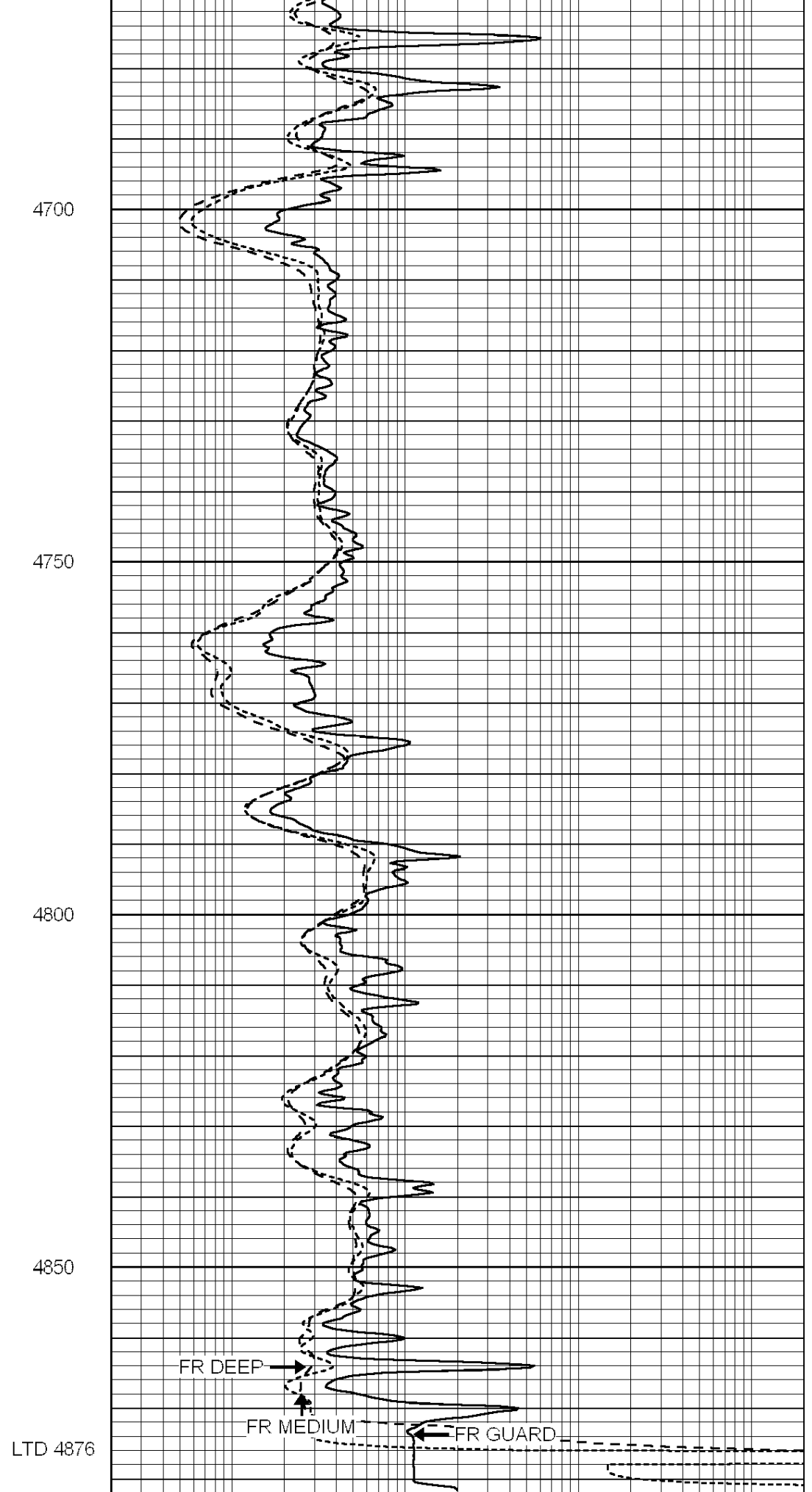
4600

4650





0 GAMMA RAY (GAPI) 150
 -100 SP (mV) 100



0.2 SHALLOW GUARD (Ohm-m) 2000
 0.2 DEEP INDUCTION (Ohm-m) 2000

-250	Rxo/Rt	50
0	MINMK	20

0.2	MEDIUM INDUCTION (Ohm-m)	2000
-----	--------------------------	------

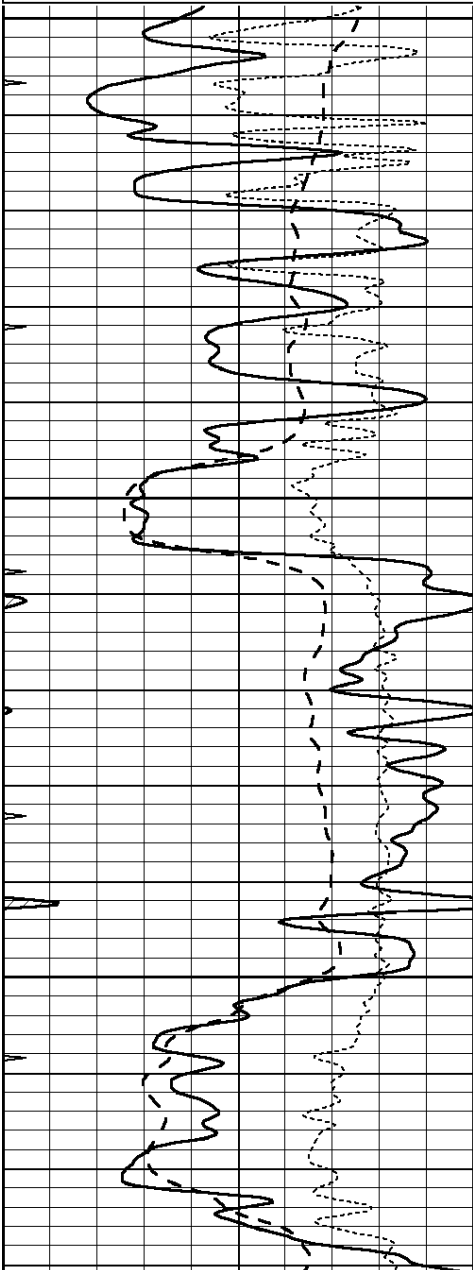


REPEAT SECTION

Database File: 1328ddn.db
 Dataset Pathname: pass2.5
 Presentation Format: _dil
 Dataset Creation: Thu Nov 24 02:22:12 2016 by Calc SOC 120430
 Charted by: Depth in Feet scaled 1:240

0	GAMMA RAY (GAPI)	150
-100	SP (mV)	100
-250	Rxo/Rt	50
0	MINMK	20

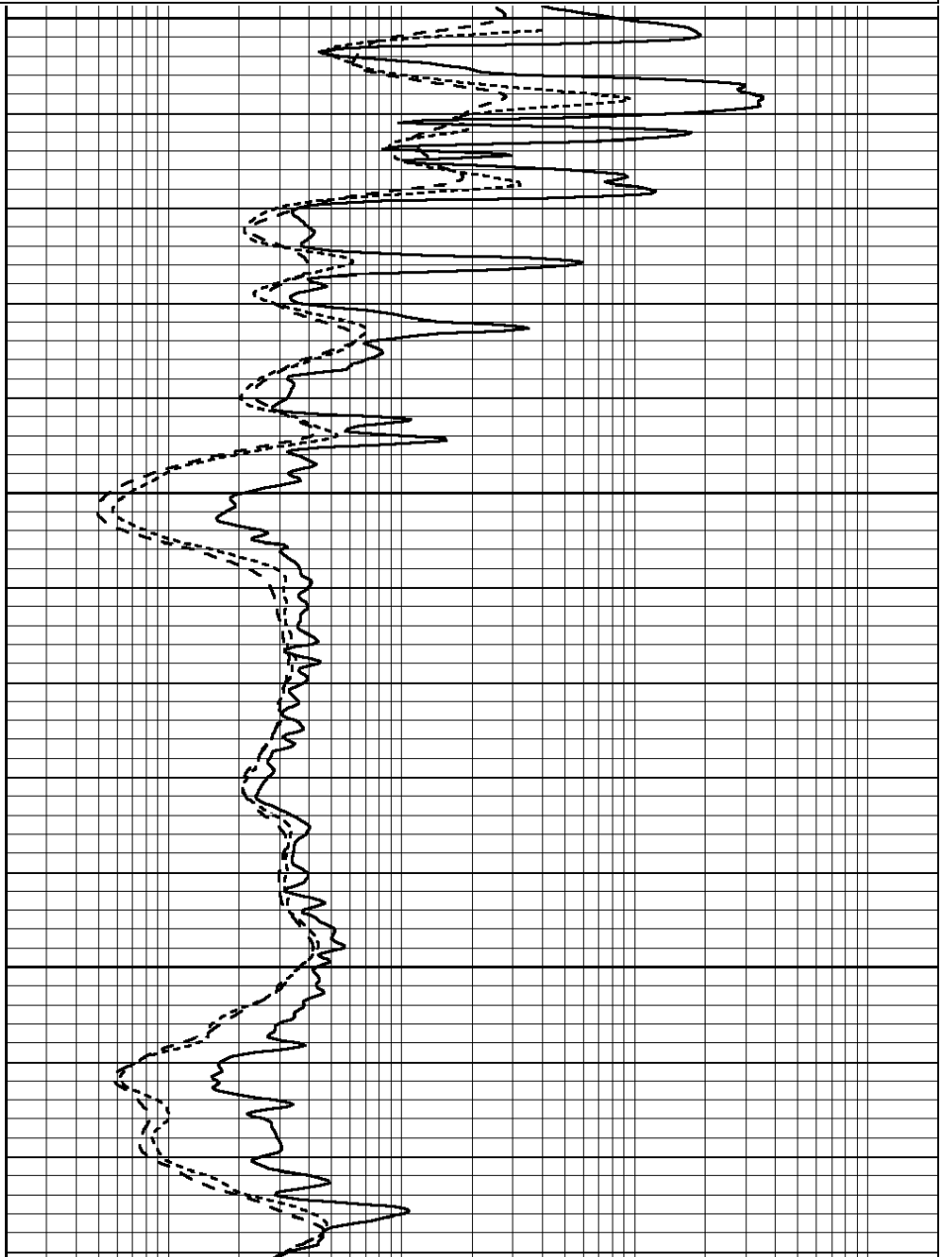
0.2	SHALLOW GUARD (Ohm-m)	2000
0.2	DEEP INDUCTION (Ohm-m)	2000
0.2	MEDIUM INDUCTION (Ohm-m)	2000



4650

4700

4750



	Zero	Cal		Zero	Cal		m'	b'
Deep	0.000	0.000	mmho/m	14.508	388.384	mmho/m	1.000	0.000
Medium	0.000	0.000	mmho/m	166.367	504.400	mmho/m	1.000	0.000
LL3		7.500	V		1400.000	Ohm-m		
		0.000	V		20.000	Ohm-m		
		-7.200	V		4000.000	mmho-m		

After Survey Verification								
	Readings			Targets			Results	
	Zero	Cal		Zero	Cal		m'	b'
Deep	0.000	0.000	mmho/m	0.000	0.000	mmho/m	0.000	0.000
Medium	0.000	0.000	mmho/m	0.000	0.000	mmho/m	0.000	0.000
LL3		1.000	Ohm-m		1.000	Ohm-m		
		0.000	Ohm-m		0.000	Ohm-m		
		1.000	mmho-m		1.000	mmho-m		

Litho Density Calibration Report
Serial: 003N Model: PRB

Master Calibration		Performed Mon Mar 14 08:48:13 2016						
	Background	Magnesium	Aluminum	Sandstone				
Window 1	1751.3	11741.0	3857.3	12907.8			cps	
Window 2	1589.4	9536.2	3267.6	10282.0			cps	
Window 3	1413.4	6466.1	2463.2	6828.7			cps	
Window 4	399.5	407.1	405.1	406.5			cps	
Long Space	0.0	7946.7	1678.1	8692.6			cps	
Short Space	2.2	3366.2	2134.1	3410.2			cps	
Rho		1.7100	2.5900	1.3800			g/cc	
Pe		0.0000	2.5700	1.5500				
Rib Angle	: 43.7	Rib Slope	: 0.954	Density/Spine Ratio			: 0.543	
Spine Angle	: 73.7	Spine Slope	: 3.412	Spine Intercept			: -18.7	

Before Survey Verification		Performed Wed Dec 31 18:00:00 1969						
Window 1	0.0	0.0	0.0	0.0			cps	
Window 2	0.0	0.0	0.0	0.0			cps	
Window 3	0.0	0.0	0.0	0.0			cps	
Window 4	0.0	0.0	0.0	0.0			cps	
Long Space	0.0	0.0	0.0	0.0			cps	
Short Space	0.0	0.0	0.0	0.0			cps	
Measured Rho		0.0000	0.0000	0.0000			g/cc	
Measured Correction		0.0000	0.0000	0.0000			g/cc	
Measured Pe			0.0000	0.0000				

After Survey Verification		Performed Wed Dec 31 18:00:00 1969						
Window 1	0.0	0.0	0.0	0.0			cps	
Window 2	0.0	0.0	0.0	0.0			cps	
Window 3	0.0	0.0	0.0	0.0			cps	
Window 4	0.0	0.0	0.0	0.0			cps	
Long Space	0.0	0.0	0.0	0.0			cps	
Short Space	0.0	0.0	0.0	0.0			cps	
Measured Rho		0.0000	0.0000	0.0000			g/cc	
Measured Correction		0.0000	0.0000	0.0000			g/cc	
Measured Pe			0.0000	0.0000				

Compensated Neutron Calibration Report

Serial Number: 070808
Tool Model: Probe

PRE-SURVEY VERIFICATION

Detector	Readings	Measured	Target
Short Space	cps		
Long Space	cps	pu	pu

POST-SURVEY VERIFICATION

Detector	Readings	Measured	Target
Short Space	cps		
Long Space	cps	pu	pu

Gamma Ray Calibration Report

Serial Number: 070558
Tool Model: OPEN_GR
Performed: Mon Aug 22 01:00:15 2016

Calibrator Value: 1.0 GAPI
Background Reading: 0.0 cps
Calibrator Reading: 1.0 cps
Sensitivity: 0.2800 GAPI/cps