



MICRO LOG

Company RAYMOND OIL COMPANY, INC.
Well #1 J. BAIRD TRUST
Field WILDCAT
County THOMAS
State KANSAS

Company RAYMOND OIL COMPANY, INC.
Well #1 J. BAIRD TRUST
Field WILDCAT
County THOMAS
State KANSAS

Location: API # : 15-193-20979-0000
1127' FSL & 1408' FWL
NW - NW - SE - SW
SEC 29 TWP 6S RGE 35W
Permanent Datum GROUND LEVEL Elevation 3304
Log Measured From KELLY BUSHING 5' A.G.L.
Drilling Measured From KELLY BUSHING
Other Services
CDL/CNL
DIL
Elevation
K.B. 3309
D.F. 3307
G.L. 3304

| | | | |
|------------------------------|---------------|---------------------|--|
| Date | 11/24/16 | | |
| Run Number | TWO | | |
| Depth Driller | 4876 | | |
| Depth Logger | 4876 | | |
| Bottom Logged Interval | 4874 | | |
| Top Log Interval | 3500 | | |
| Casing Driller | 8 5/8"@300' | | |
| Casing Logger | 304 | | |
| Bit Size | 7 7/8" | | |
| Type Fluid in Hole | CHEMICAL MUD | CHLORIDES 5,000 PPM | |
| Density / Viscosity | 9.3/59 | | |
| pH / Fluid Loss | 9.5/11.2 | | |
| Source of Sample | FLOWLINE | | |
| Rim @ Meas. Temp | .700@80F | | |
| Rmf @ Meas. Temp | .525@80F | | |
| Rmc @ Meas. Temp | .840@80F | | |
| Source of Rmf / Rmc | MEASUREMENT | | |
| Rim @ BHT | .452@80F | | |
| Time Circulation Stopped | 4.5 HOURS | | |
| Time Logger on Bottom | 2:00 A.M. | | |
| Maximum Recorded Temperature | 124F | | |
| Equipment Number | 922339 | | |
| Location | HAYS, KANSAS | | |
| Recorded By | JEFF LUEBBERS | | |
| Witnessed By | KIM SHOEMAKER | | |

<<< Fold Here >>>

All interpretations are opinions based on inferences from electrical or other measurements and we cannot and do not guarantee the accuracy or correctness of any interpretation, and we shall not, except in the case of gross or willful negligence on our part, be liable or responsible for any loss, costs, damages, or expenses incurred or sustained by anyone resulting from any interpretation made by any of our officers, agents or employees. These interpretations are also subject to our general terms and conditions set out in our current Price Schedule.

Comments

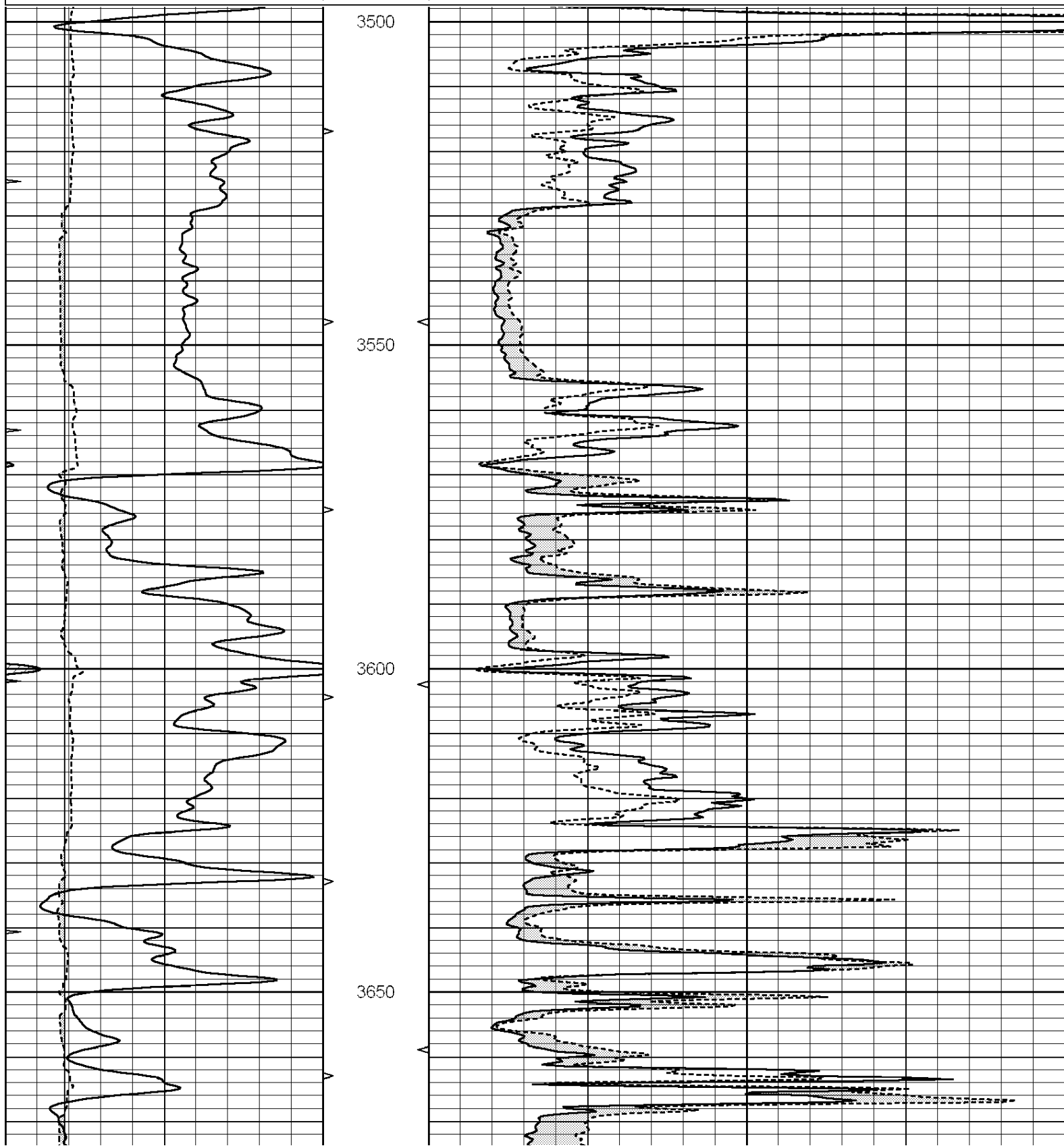
THANK YOU FOR USING ELI WIRELINE HAYS, KANSAS (785) 628-6395
DIRECTIONS
LEVANT, KS. & I-70, 9N. ON "CR 11" TO "RD. Z", 3W., N. INTO

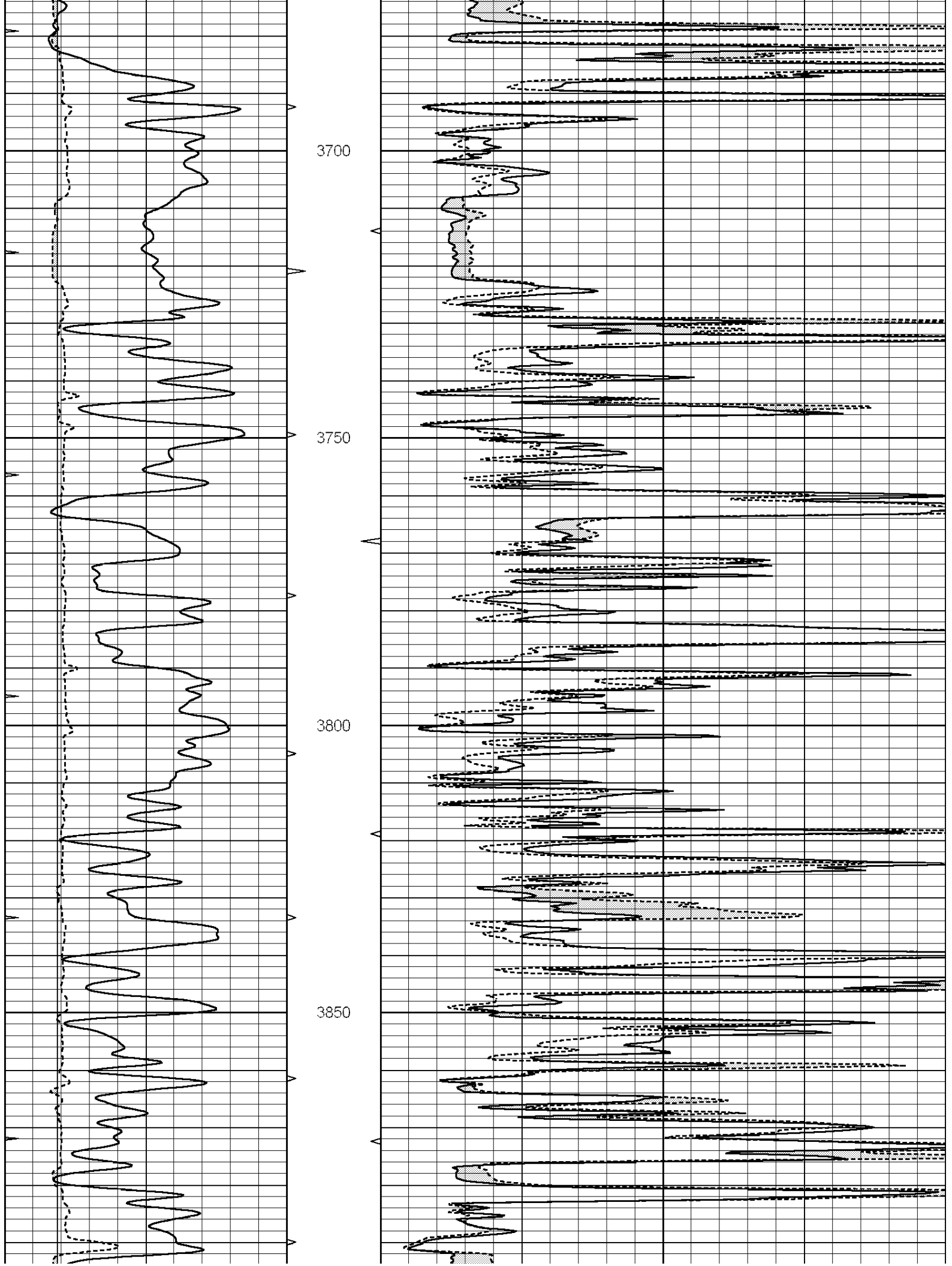


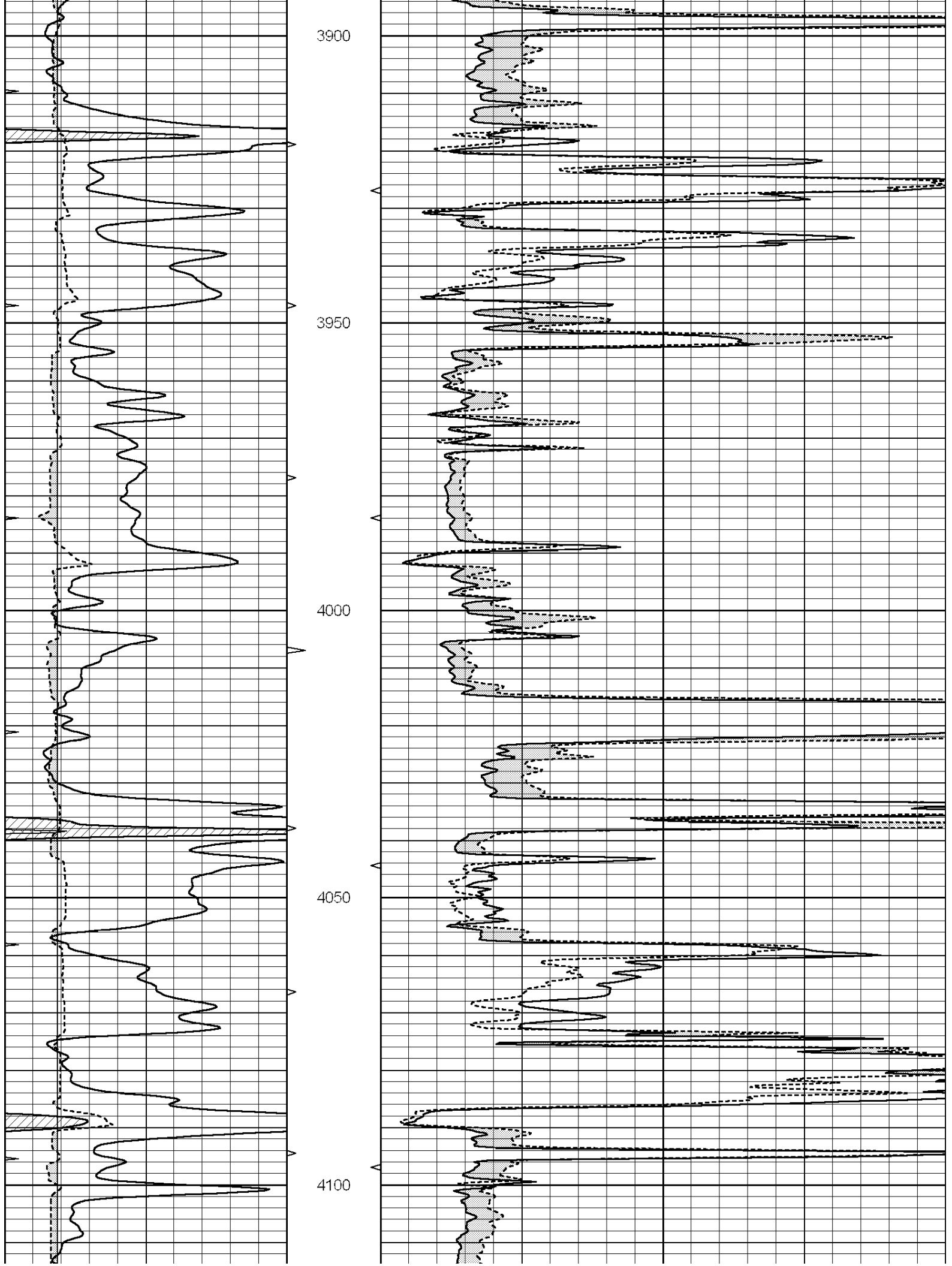
MAIN SECTION

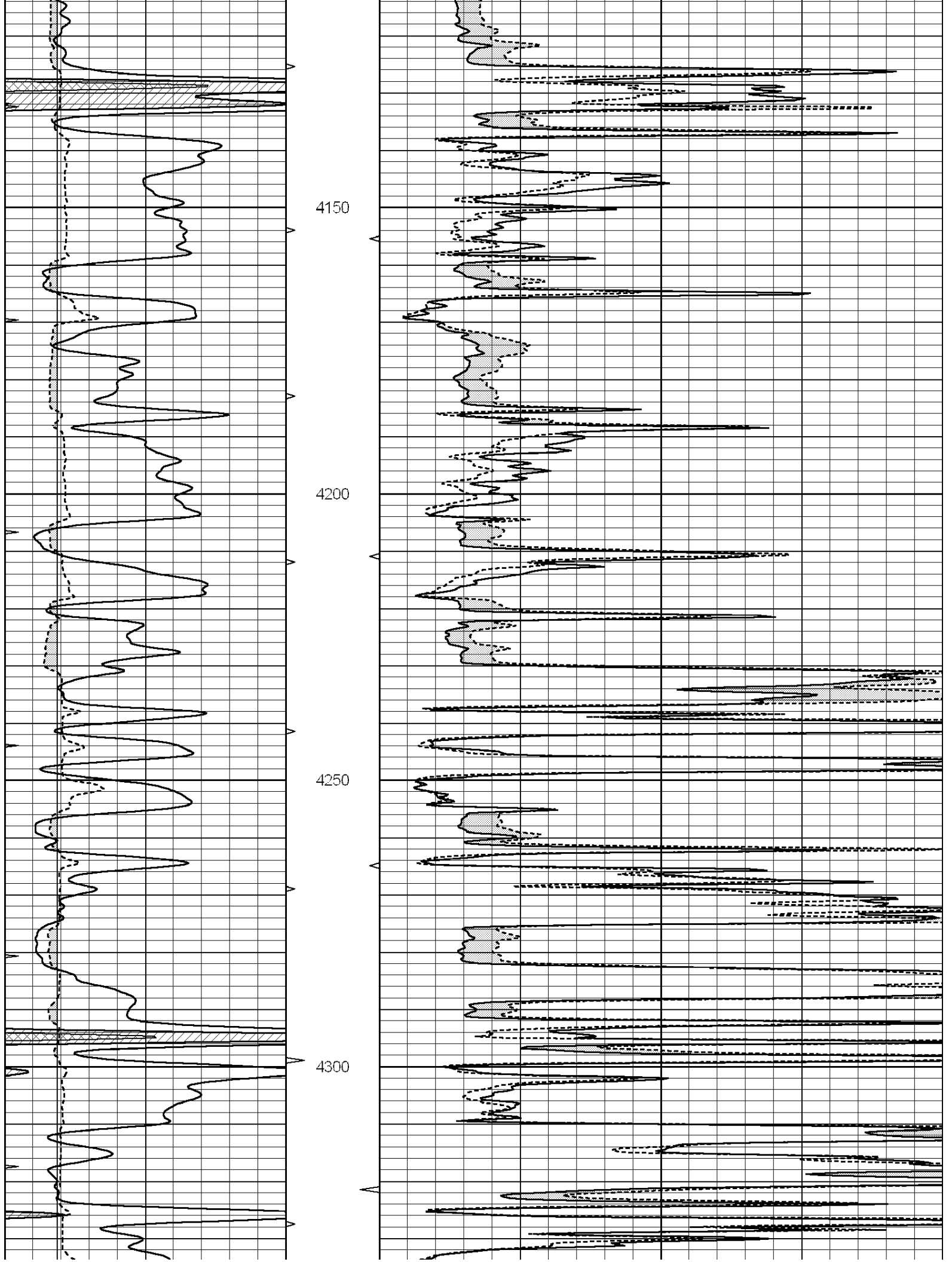
Database File: 1328ddn.db
 Dataset Pathname: pass6.1
 Presentation Format: micro
 Dataset Creation: Thu Nov 24 05:18:06 2016 by Calc SOC 120430
 Charted by: Depth in Feet scaled 1:240

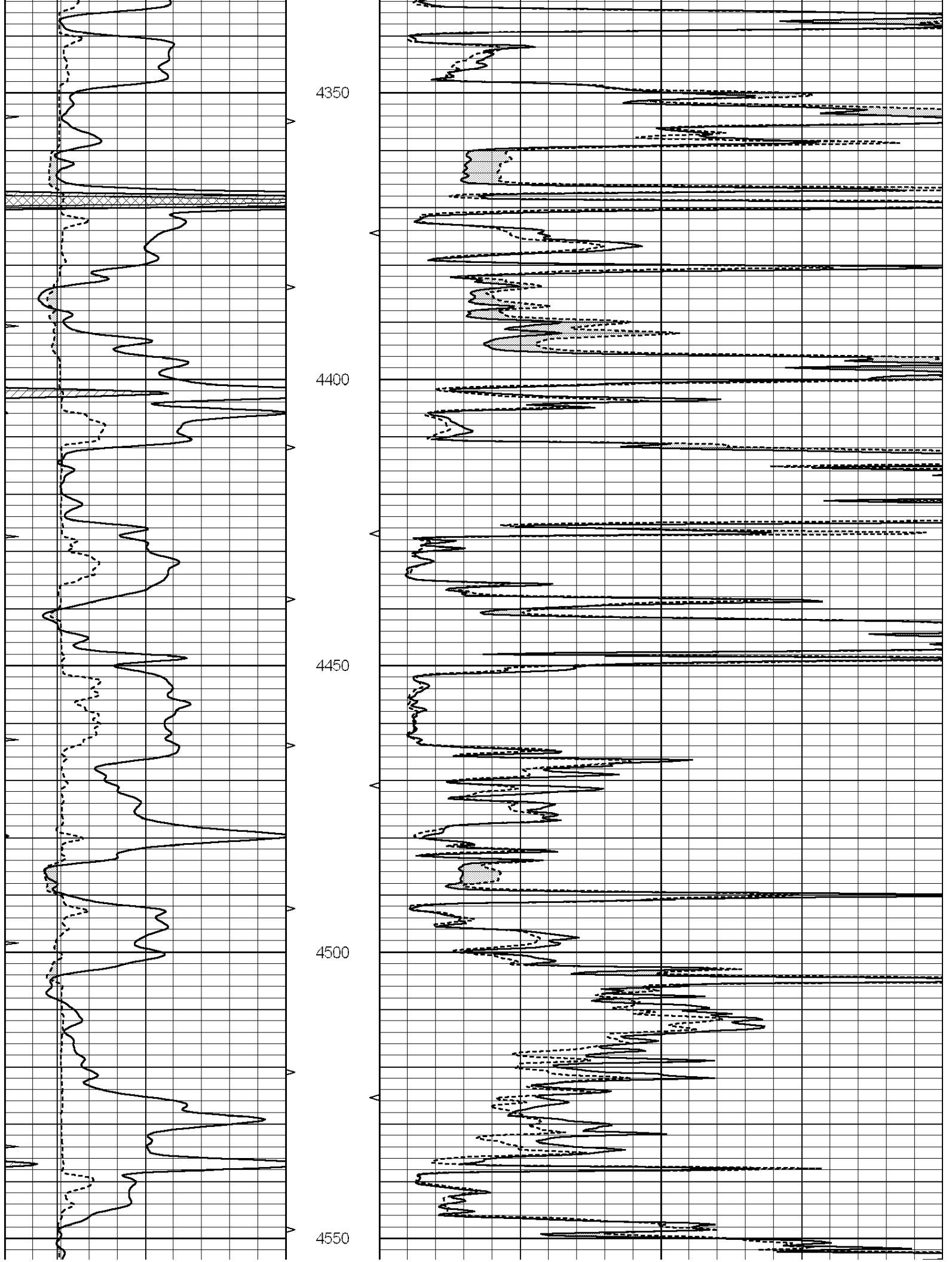
| | | | | | | |
|---|------------------|-----|----------|----|----------------|----|
| 0 | GAMMA RAY (GAPI) | 150 | ABHV | 0 | MEL1.5 (Ohm-m) | 40 |
| 6 | CALIPER (in) | 16 | 10 (ft3) | 0 | MEL 20 (Ohm-m) | 40 |
| 0 | MINMK | 20 | TBHV | | | |
| | | | 0 (ft3) | 10 | | |

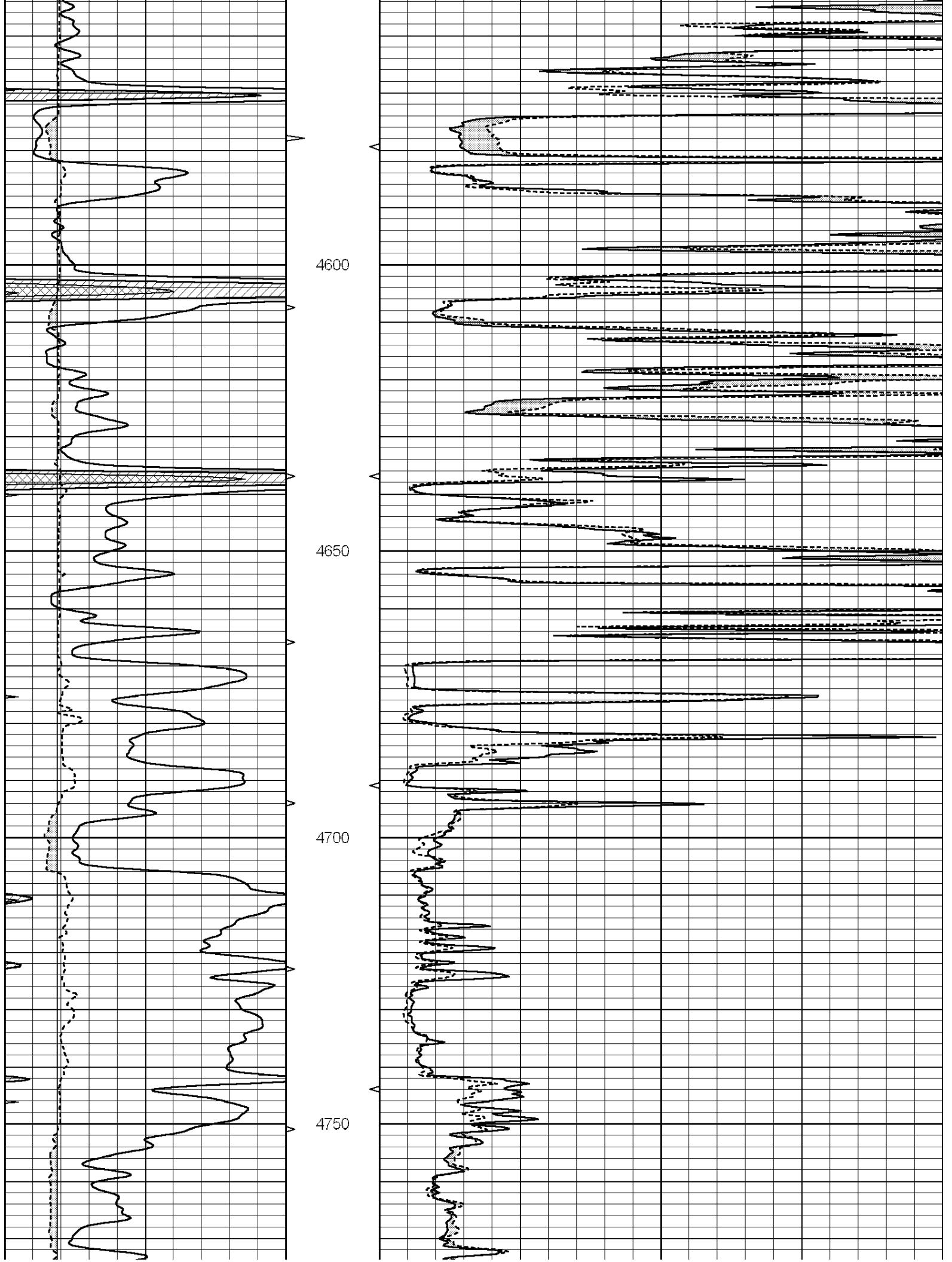


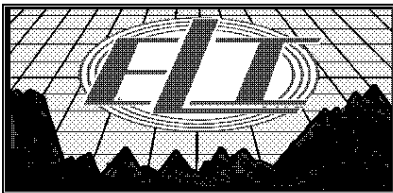
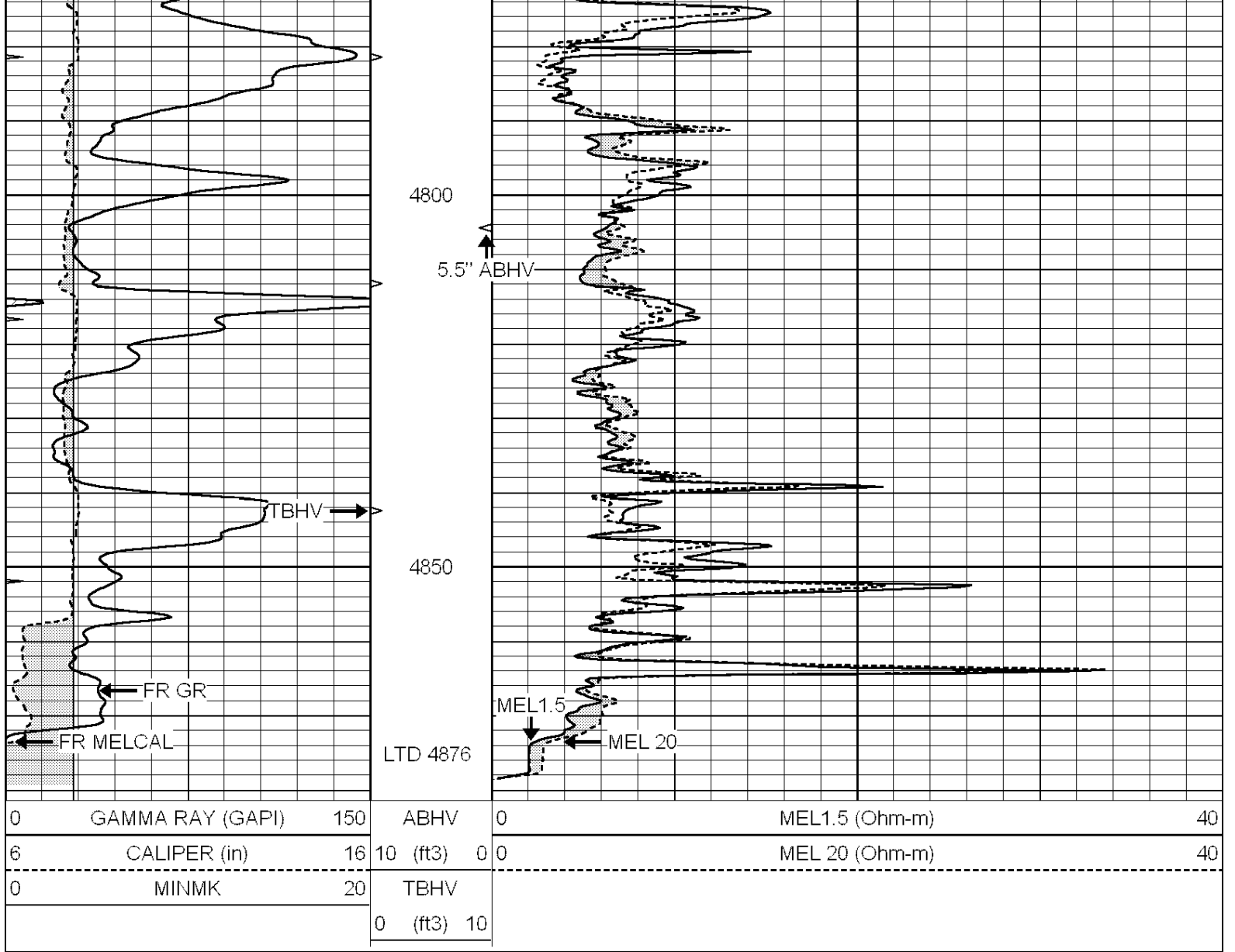








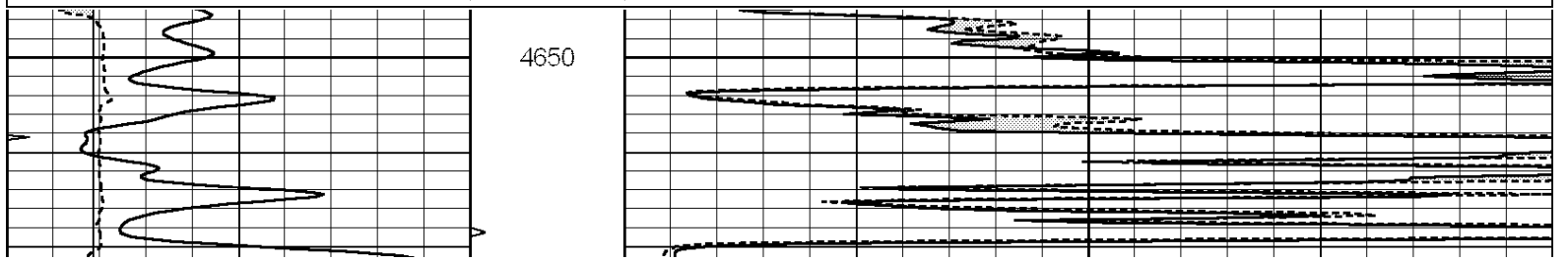


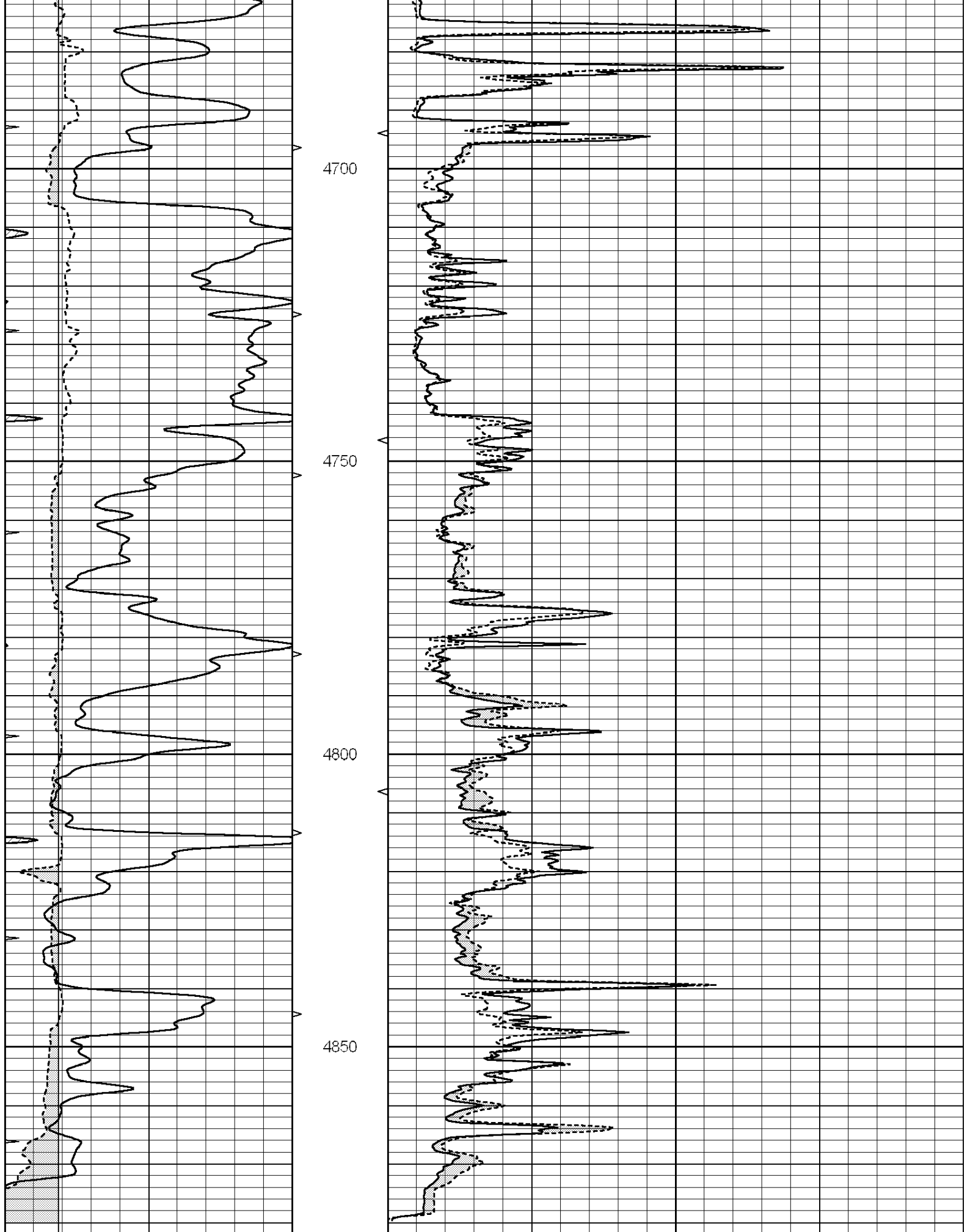


REPEAT SECTION

Database File: 1328ddn.db
 Dataset Pathname: pass5.1
 Presentation Format: micro
 Dataset Creation: Thu Nov 24 05:25:11 2016 by Calc SOC 120430
 Charted by: Depth in Feet scaled 1:240

| | | | | | | |
|---|------------------|-----|----------|----|----------------|----|
| 0 | GAMMA RAY (GAPI) | 150 | ABHV | 0 | MEL1.5 (Ohm-m) | 40 |
| 6 | CALIPER (in) | 16 | 10 (ft3) | 0 | MEL 20 (Ohm-m) | 40 |
| 0 | MINMK | 20 | TBHV | | | |
| | | | 0 (ft3) | 10 | | |





| | | | | | | |
|---|------------------|-----|----------|-----|----------------|----|
| 0 | GAMMA RAY (GAPI) | 150 | ABHV | 0 | MEL1.5 (Ohm-m) | 40 |
| 6 | CALIPER (in) | 16 | 10 (ft3) | 0 0 | MEL 20 (Ohm-m) | 40 |

| | | | |
|---|-------|----|------------|
| 0 | MINMK | 20 | TBHV |
| | | | 0 (ft3) 10 |

Calibration Report

Database File: 1328ddn.db
Dataset Pathname: pass6.1
Dataset Creation: Thu Nov 24 05:18:06 2016 by Calc SOC 120430

MICRO Calibration Report

| | | |
|----------------------|--------------------------|---------------|
| Serial Number: | 070910 | |
| Tool Model: | ProbeN | |
| Performed: | Sat Nov 12 09:31:59 2016 | |
| Caliper Calibration: | Gain=5.104 | Offset=-0.218 |
| | Low Cal | High Cal |
| References | 7.300 | 16.000 |
| Readings | 1.473 | 3.178 |
| 1.5" Calibration: | Gain=36.000 | Offset=0.300 |
| | Low Cal | High Cal |
| References | 0.000 | 20.000 |
| Readings | 0.000 | 1.216 |
| 2" Calibration: | Gain=42.000 | Offset=0.000 |
| | Low Cal | High Cal |
| References | 0.000 | 20.000 |
| Readings | 0.002 | 1.053 |

Gamma Ray Calibration Report

| | | |
|---------------------|--------------------------|----------|
| Serial Number: | 070559 | |
| Tool Model: | OPEN_GR | |
| Performed: | Thu Nov 24 04:20:58 2016 | |
| Calibrator Value: | 1.0 | GAPI |
| Background Reading: | 0.0 | cps |
| Calibrator Reading: | 1.0 | cps |
| Sensitivity: | 0.2100 | GAPI/cps |