



**COMPENSATED
DENSITY / NEUTRON
LOG**

Company RAYMOND OIL COMPANY, INC.
 Well #1 J. BAIRD TRUST
 Field WILDCAT
 County THOMAS
 State KANSAS

Company RAYMOND OIL COMPANY, INC.
 Well #1 J. BAIRD TRUST
 Field WILDCAT
 County THOMAS State KANSAS

Location: API # : 15-193-20979-0000
 1127' FSL & 1408' FWL
 NW - NW - SE - SW
 SEC 29 TWP 6S RGE 35W
 Permanent Datum GROUND LEVEL Elevation 3304
 Log Measured From KELLY BUSHING 5' A.G.L.
 Drilling Measured From KELLY BUSHING
 Other Services DIL/MEL
 Elevation K.B. 3309
 D.F. 3307
 G.L. 3304

Date	11/24/16		
Run Number	ONE		
Depth Driller	4876		
Depth Logger	4876		
Bottom Logged Interval	4852		
Top Log Interval	3500		
Casing Driller	8 5/8"@300'		
Casing Logger	304		
Bit Size	7 7/8"		
Type Fluid in Hole	CHEMICAL MUD	CHLORIDES 5,000 PPM	
Density / Viscosity	9.3/59		
pH / Fluid Loss	9.5/11.2		
Source of Sample	FLOWLINE		
Rim @ Meas. Temp	.700@80F		
Rmf @ Meas. Temp	.525@80F		
Rmc @ Meas. Temp	.840@80F		
Source of Rmf / Rmc	MEASUREMENT		
Rim @ BHT	.452@80F		
Time Circulation Stopped	2.5 HOURS		
Time Logger on Bottom	2:00 A.M.		
Maximum Recorded Temperature	124F		
Equipment Number	922339		
Location	HAYS, KANSAS		
Recorded By	JEFF LUEBBERS		
Witnessed By	KIM SHOEMAKER		

<<< Fold Here >>>

All interpretations are opinions based on inferences from electrical or other measurements and we cannot and do not guarantee the accuracy or correctness of any interpretation, and we shall not, except in the case of gross or willful negligence on our part, be liable or responsible for any loss, costs, damages, or expenses incurred or sustained by anyone resulting from any interpretation made by any of our officers, agents or employees. These interpretations are also subject to our general terms and conditions set out in our current Price Schedule.

Comments

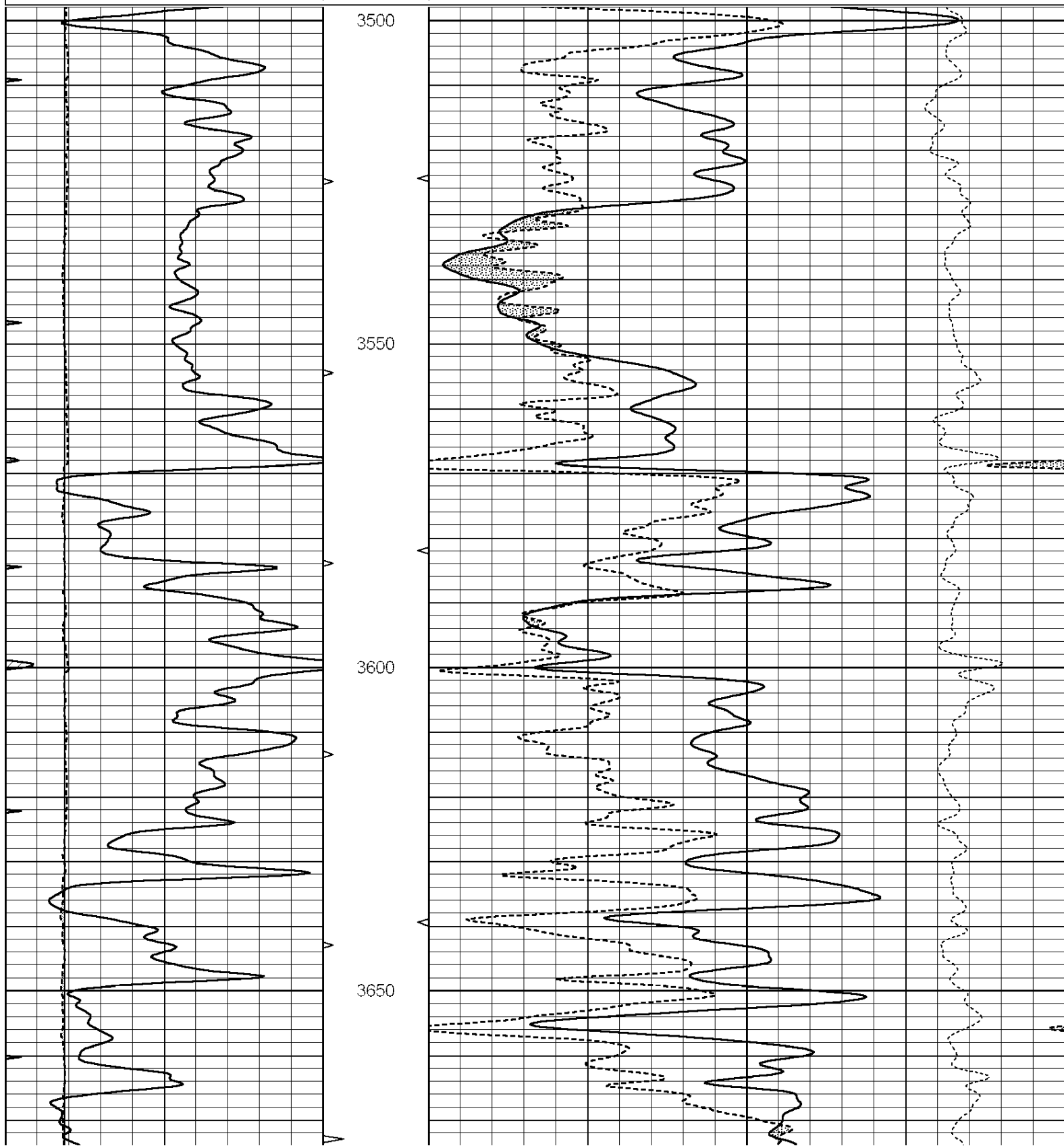
THANK YOU FOR USING ELI WIRELINE HAYS, KANSAS (785) 628-6395
 DIRECTIONS
 LEVANT, KS. & I-70, 9N. ON "CR 11" TO "RD. Z", 3W., N. INTO

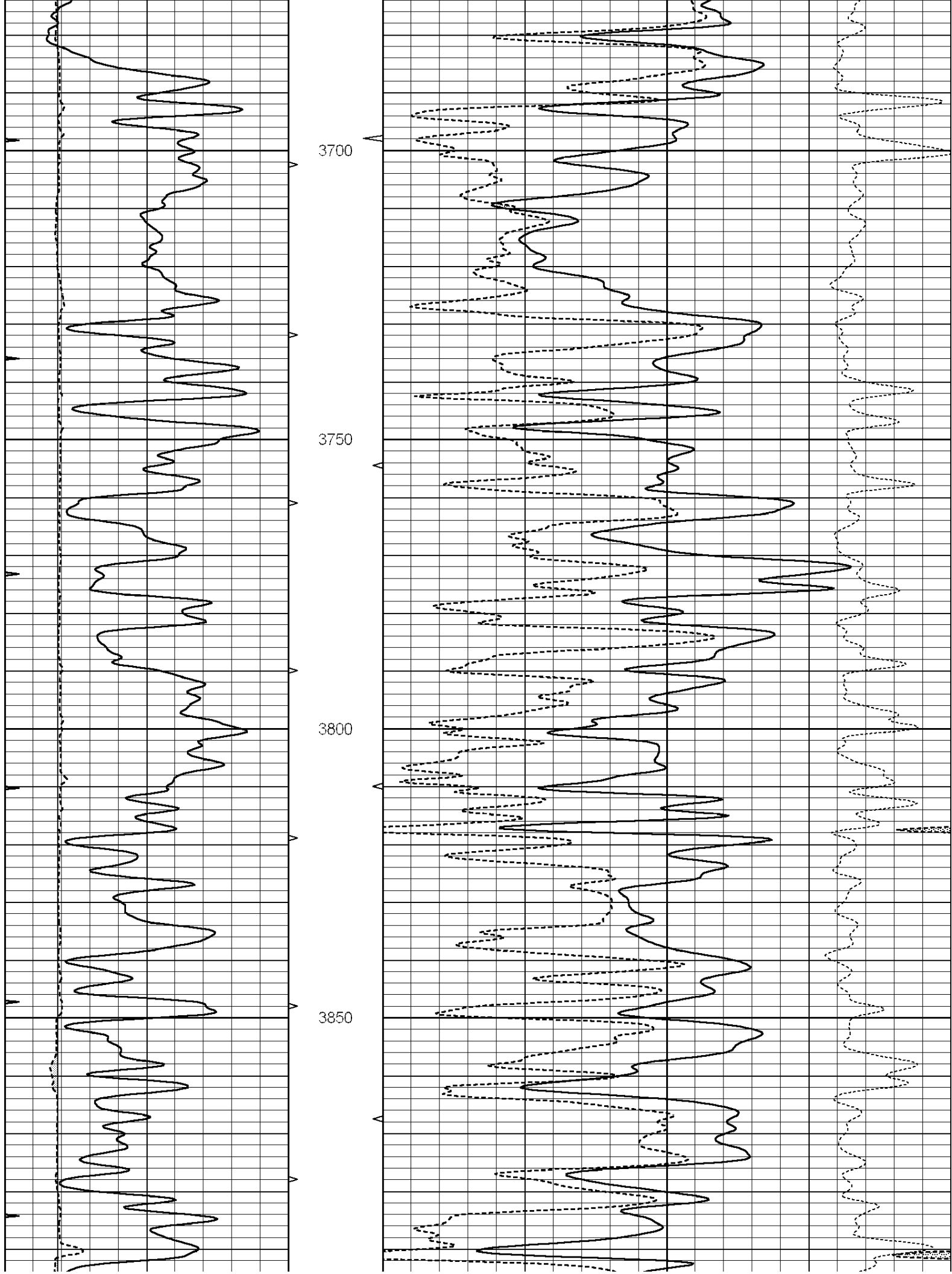


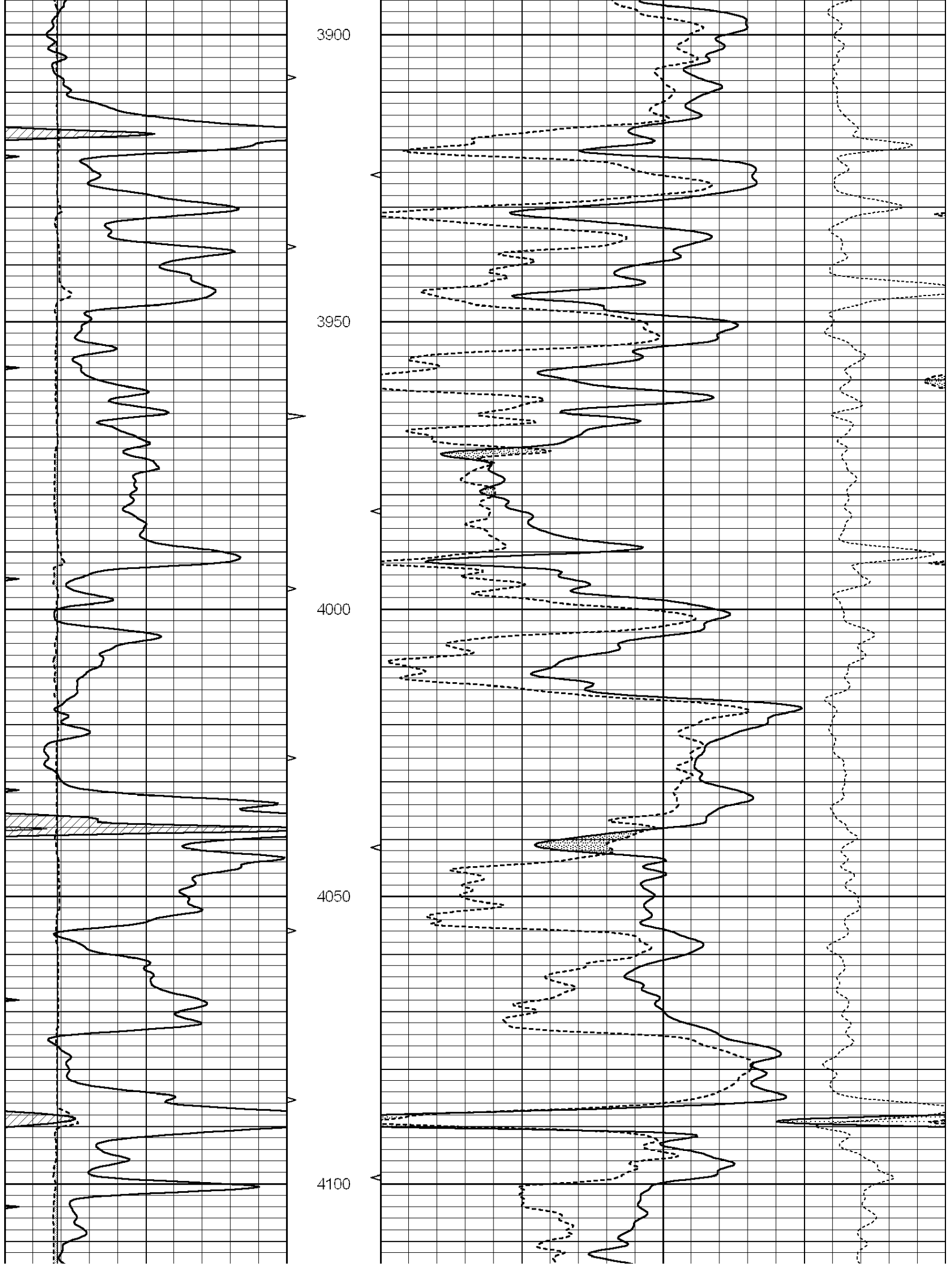
MAIN SECTION

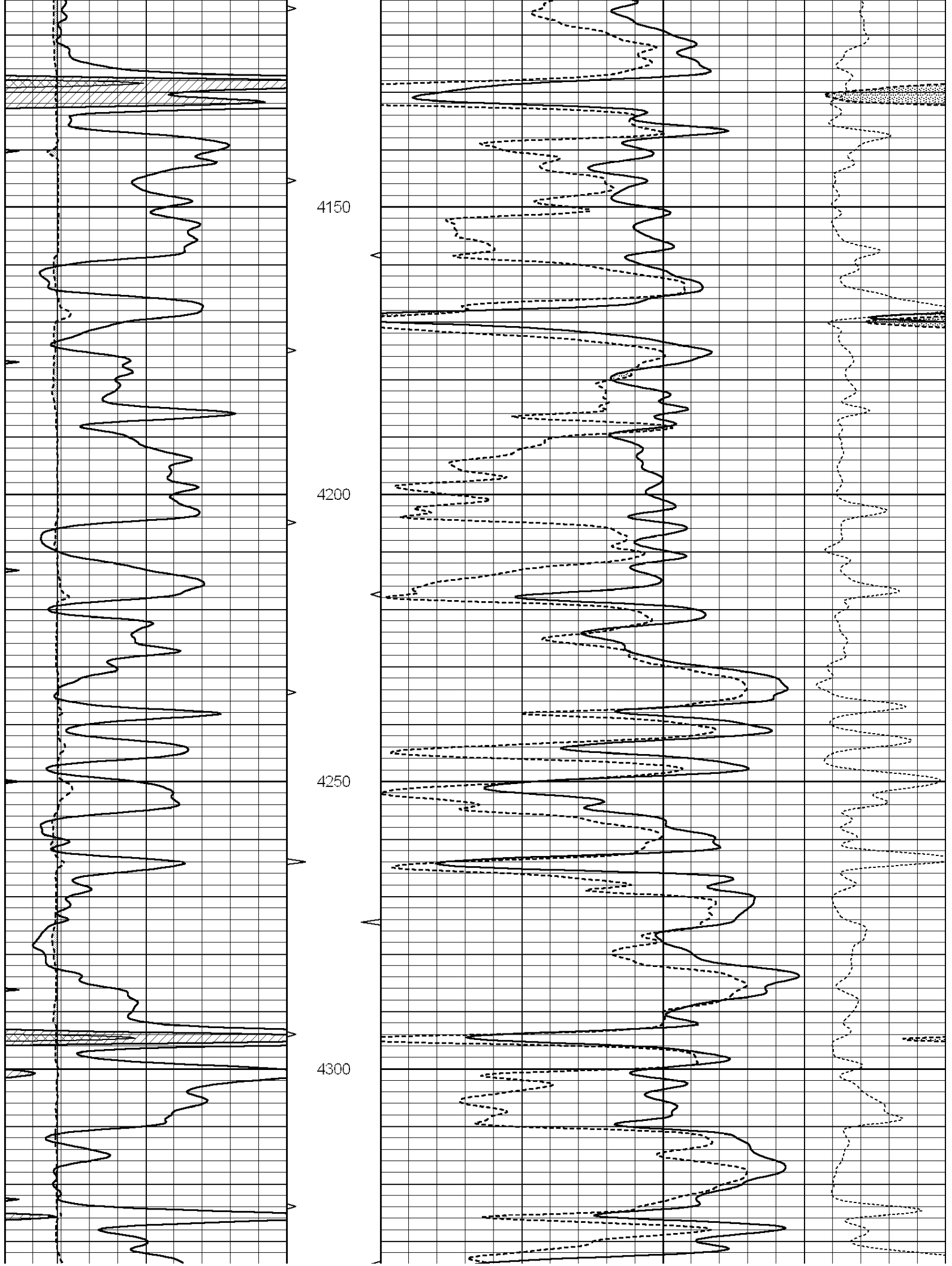
Database File: 1328ddn.db
 Dataset Pathname: pass3.3
 Presentation Format: den_neu
 Dataset Creation: Thu Nov 24 03:32:27 2016 by Calc SOC 120430
 Charted by: Depth in Feet scaled 1:240

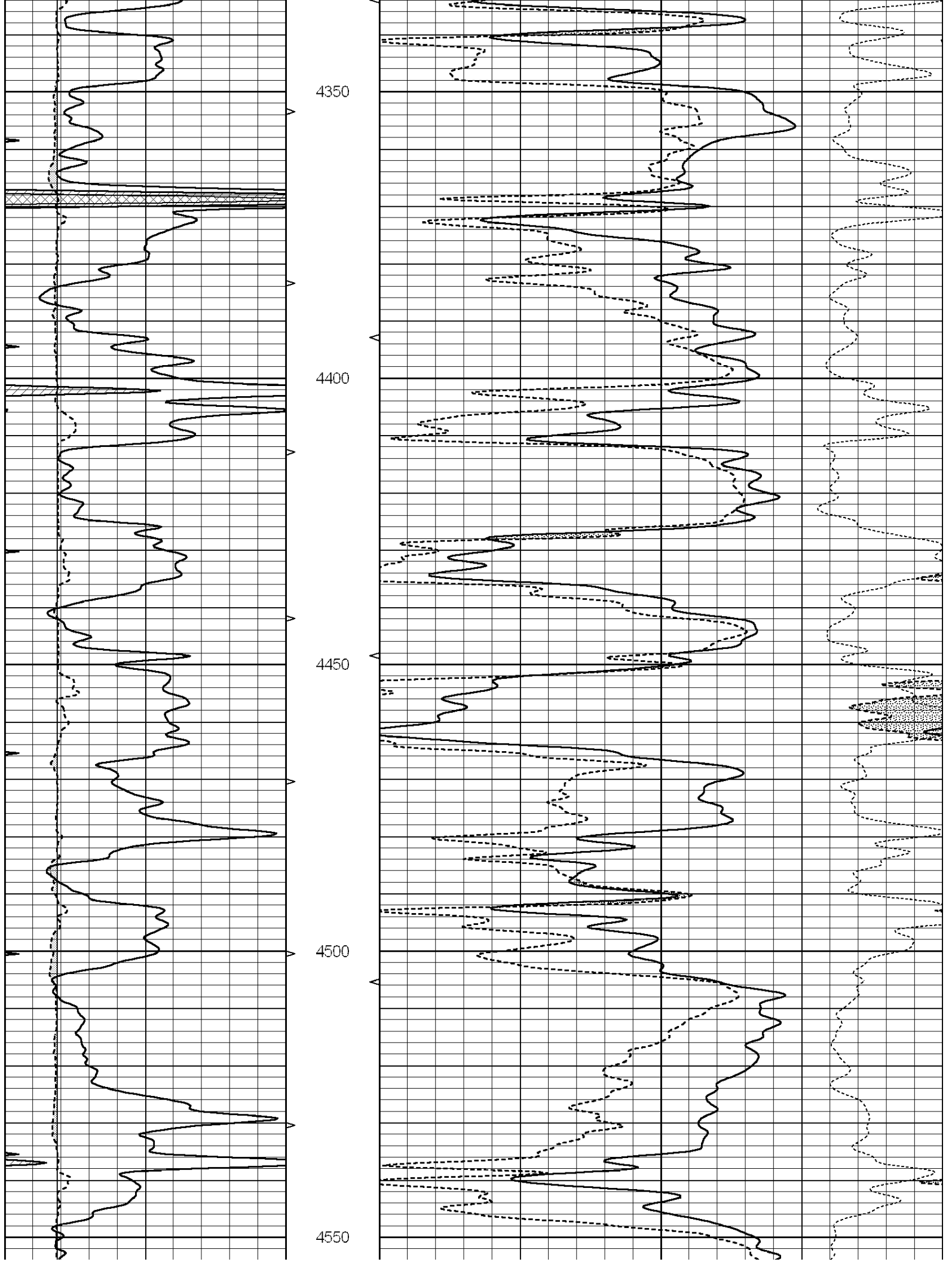
0	GAMMA RAY (GAPI)	150	ABHV	30	COMPENSATED DENSITY (pu)	-10
6	CALIPER (in)	16	10 (ft3)	0 30	COMPENSATED NEUTRON (pu)	-10
0	MINMK	20	TBHV		-0.25 CORRECTION (g/cc)	0.25
			0 (ft3)	10		

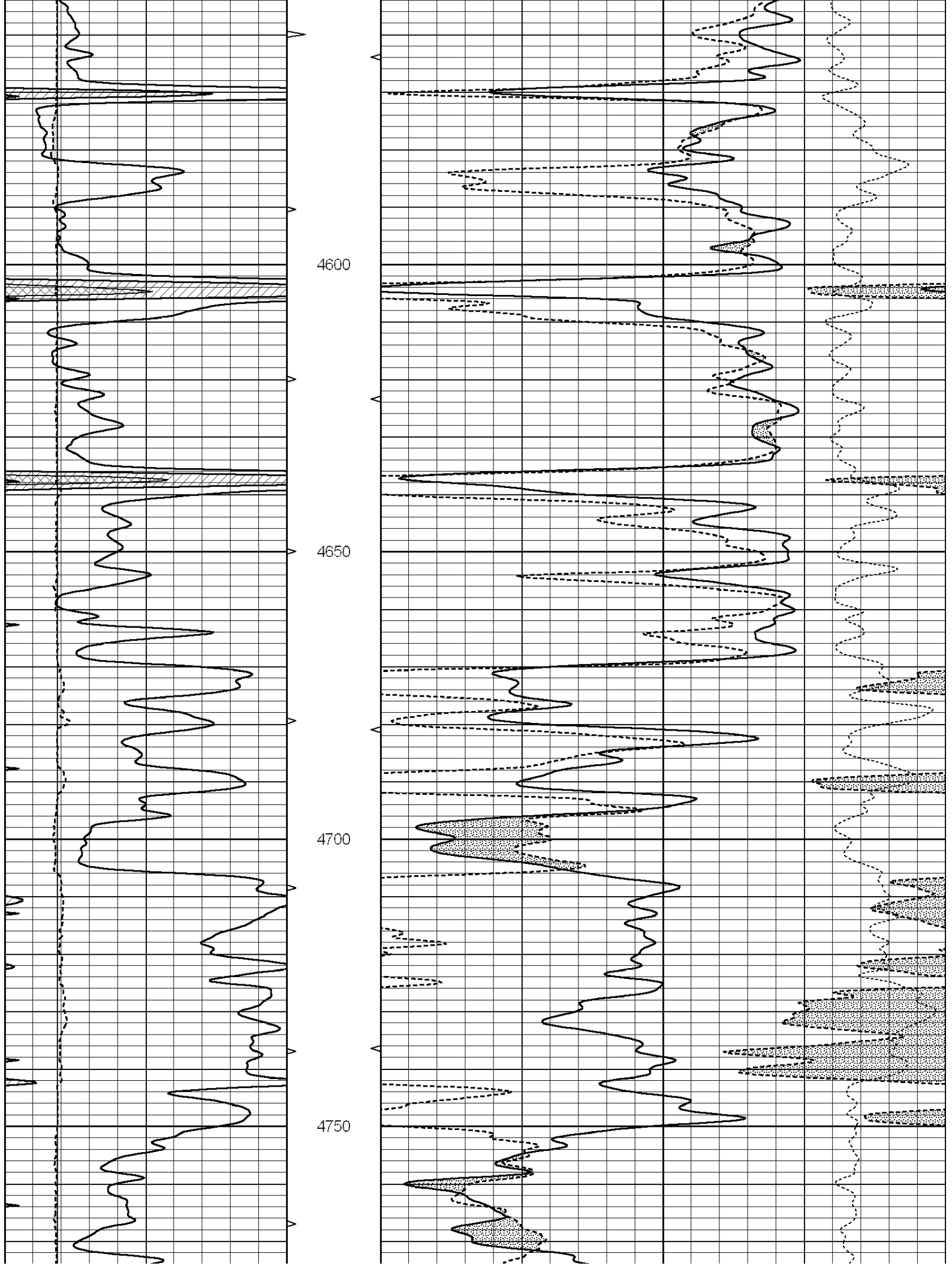


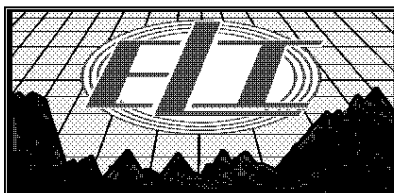
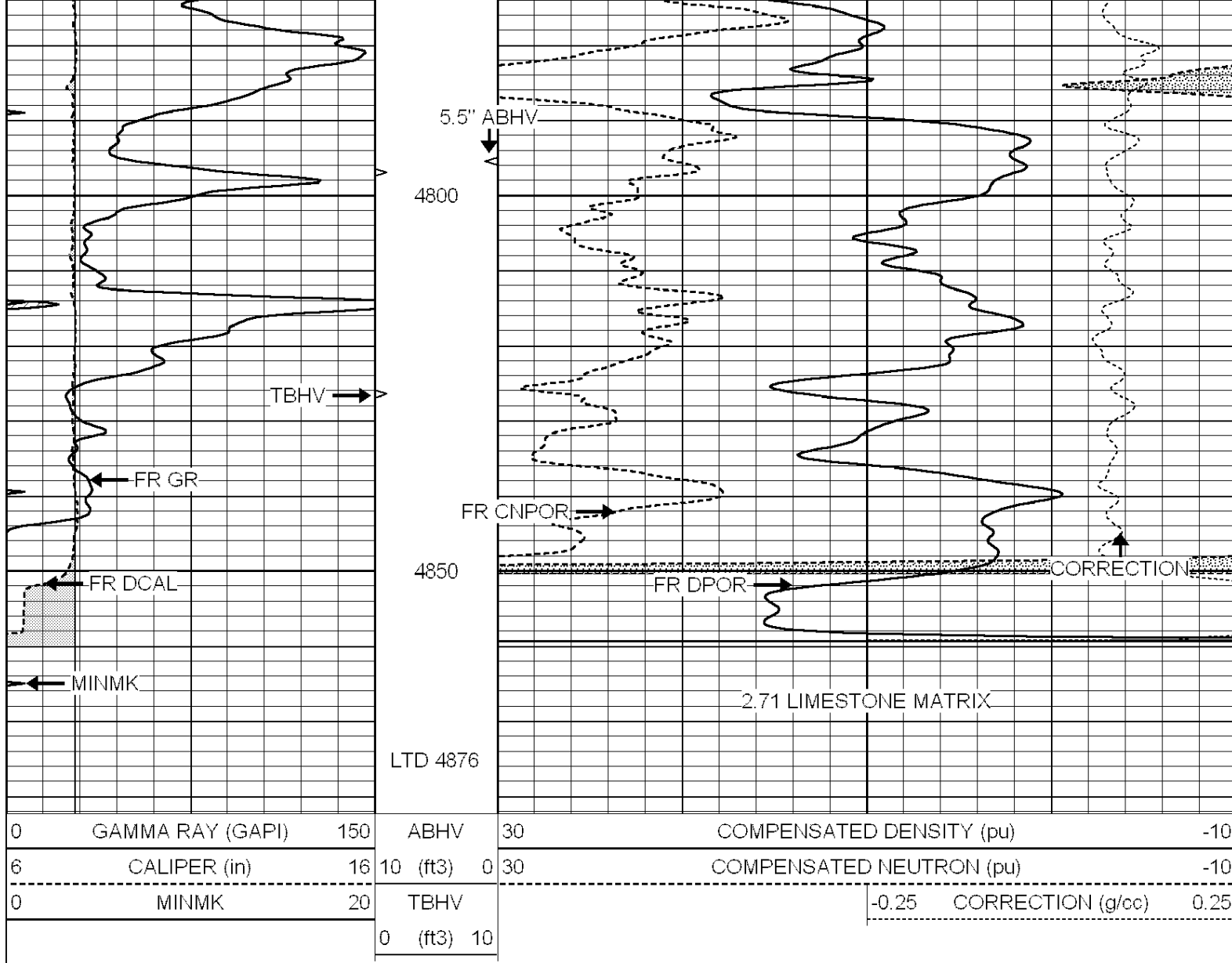








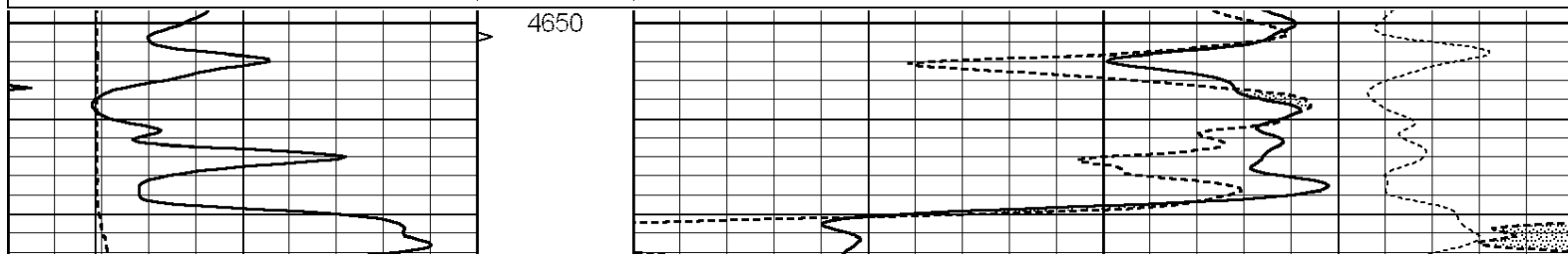


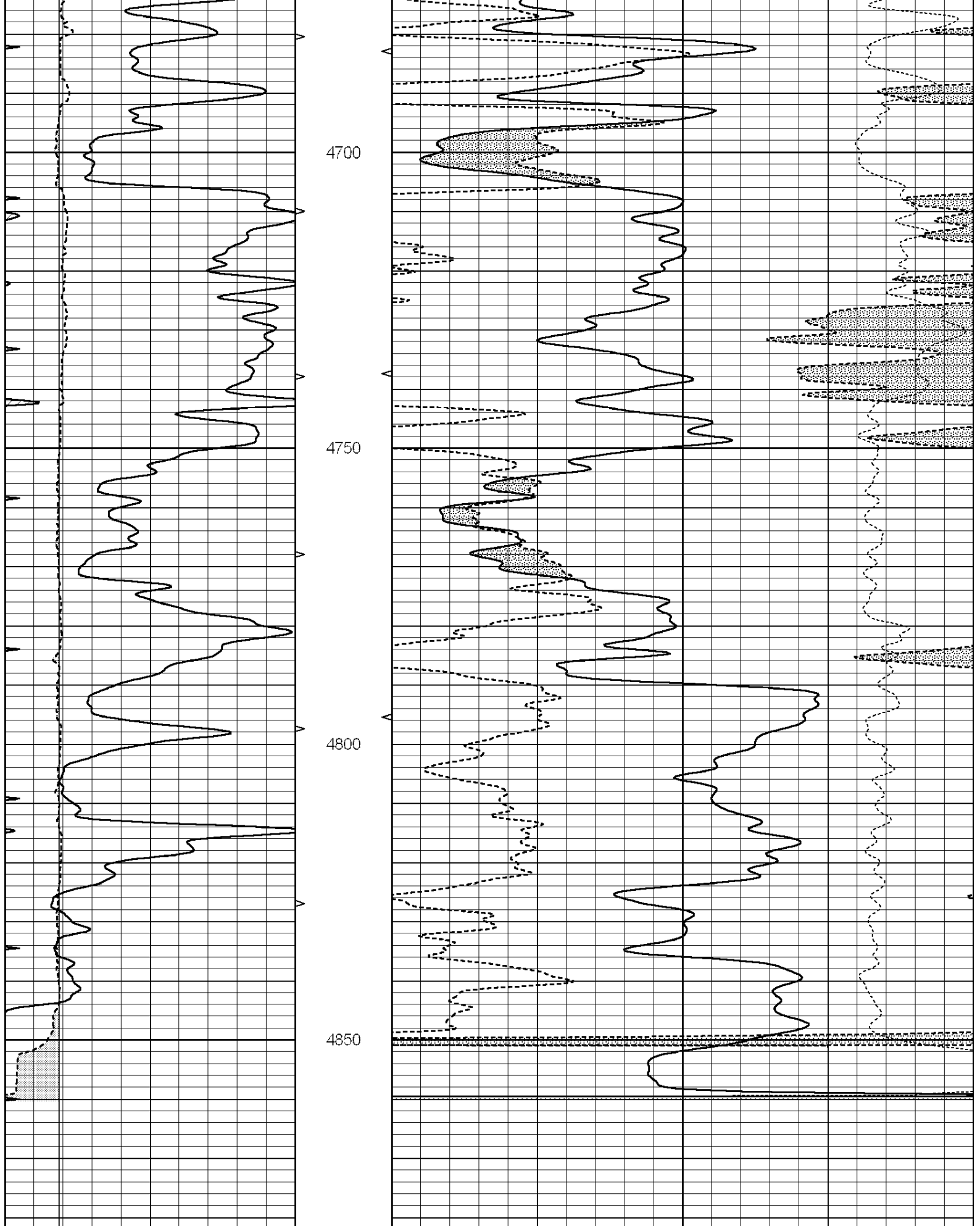


REPEAT SECTION

Database File: 1328ddn.dlb
 Dataset Pathname: pass2.5
 Presentation Format: den_neu
 Dataset Creation: Thu Nov 24 02:22:12 2016 by Calc SOC 120430
 Charted by: Depth in Feet scaled 1:240

0	GAMMA RAY (GAPI)	150	ABHV	30	COMPENSATED DENSITY (pu)	-10
6	CALIPER (in)	16	10 (ft3)	0 30	COMPENSATED NEUTRON (pu)	-10
0	MINMK	20	TBHV		-0.25	CORRECTION (g/cc) 0.25
			0 (ft3)	10		





4700

4750

4800

4850

0 GAMMA RAY (GAPI) 150 ABHV 30 COMPENSATED DENSITY (pu) -10

6 CALIPER (in) 16 10 (ft3) 0 30 COMPENSATED NEUTRON (pu) -10

6 CALIPER (in) 16 10 (ft3) 0 30 COMPENSATED NEUTRON (pu) -10

0 (ft3) 10

Calibration Report

Database File: 1328ddn.db
 Dataset Pathname: pass3.3
 Dataset Creation: Thu Nov 24 03:32:27 2016 by Calc SOC 120430

Dual Induction Calibration Report

Serial-Model: PROBE7-DILG
 Surface Cal Performed: Thu Nov 03 11:12:55 2016
 Downhole Cal Performed: Mon Jul 28 12:02:56 2008
 After Survey Verification Performed: Mon Jul 28 12:02:56 2008

Surface Calibration

Loop:	Readings			References			Results	
	Air	Loop		Air	Loop		m	b
Deep	-0.014	0.629	V	0.000	400.000	mmho/m	625.000	0.000
Medium	0.039	0.728	V	0.000	464.000	mmho/m	675.000	-46.000
Internal:	Zero	Cal		Zero	Cal		m	b
Deep	0.011	0.610	V	0.000	400.000	mmho/m	667.135	-7.256
Medium	0.005	0.712	V	0.000	464.000	mmho/m	655.677	-3.102

Downhole Calibration

	Readings			References			Results	
	Zero	Cal		Zero	Cal		m'	b'
Deep	0.000	0.000	mmho/m	14.508	388.384	mmho/m	1.000	0.000
Medium	0.000	0.000	mmho/m	166.367	504.400	mmho/m	1.000	0.000
LL3		7.500	V		1400.000	Ohm-m		
		0.000	V		20.000	Ohm-m		
		-7.200	V		4000.000	mmho-m		

After Survey Verification

	Readings			Targets			Results	
	Zero	Cal		Zero	Cal		m'	b'
Deep	0.000	0.000	mmho/m	0.000	0.000	mmho/m	0.000	0.000
Medium	0.000	0.000	mmho/m	0.000	0.000	mmho/m	0.000	0.000
LL3		1.000	Ohm-m		1.000	Ohm-m		
		0.000	Ohm-m		0.000	Ohm-m		
		1.000	mmho-m		1.000	mmho-m		

Litho Density Calibration Report

Serial: 003N Model: PRB

Master Calibration

Performed Mon Mar 14 08:48:13 2016

	Background	Magnesium	Aluminum	Sandstone	
Window 1	1751.3	11741.0	3857.3	12907.8	cps
Window 2	1589.4	9536.2	3267.6	10282.0	cps
Window 3	1413.4	6466.1	2463.2	6828.7	cps
Window 4	399.5	407.1	405.1	406.5	cps
Long Space	0.0	7946.7	1678.1	8692.6	cps
Short Space	2.2	3366.2	2134.1	3410.2	cps
Rho		1.7100	2.5900	1.3800	g/cc
Pe		0.0000	2.5700	1.5500	

Rib Angle : 43.7 Rib Slope : 0.954 Density/Spine Ratio : 0.543
 Spine Angle : 73.7 Spine Slope : 3.412 Spine Intercept : 18.7

Before Survey Verification

Performed Wed Dec 31 18:00:00 1969

Window 1	0.0	0.0	0.0	0.0	cps
Window 2	0.0	0.0	0.0	0.0	cps
Window 3	0.0	0.0	0.0	0.0	cps
Window 4	0.0	0.0	0.0	0.0	cps
Long Space	0.0	0.0	0.0	0.0	cps
Short Space	0.0	0.0	0.0	0.0	cps
Measured Rho		0.0000	0.0000	0.0000	g/cc
Measured Correction		0.0000	0.0000	0.0000	g/cc
Measured Pe			0.0000	0.0000	

After Survey Verification

Performed Wed Dec 31 18:00:00 1969

Window 1	0.0	0.0	0.0	0.0	cps
Window 2	0.0	0.0	0.0	0.0	cps
Window 3	0.0	0.0	0.0	0.0	cps
Window 4	0.0	0.0	0.0	0.0	cps
Long Space	0.0	0.0	0.0	0.0	cps
Short Space	0.0	0.0	0.0	0.0	cps
Measured Rho		0.0000	0.0000	0.0000	g/cc
Measured Correction		0.0000	0.0000	0.0000	g/cc
Measured Pe			0.0000	0.0000	

Compensated Neutron Calibration Report

Serial Number: 070808
Tool Model: Probe

PRE-SURVEY VERIFICATION

Detector	Readings	Measured	Target
Short Space	cps		
Long Space	cps	pu	pu

POST-SURVEY VERIFICATION

Detector	Readings	Measured	Target
Short Space	cps		
Long Space	cps	pu	pu

Gamma Ray Calibration Report

Serial Number: 070558
 Tool Model: OPEN_GR
 Performed: Mon Aug 22 01:00:15 2016

Calibrator Value: 1.0 GAPI

Background Reading: 0.0 cps
 Calibrator Reading: 1.0 cps

Sensitivity: 0.2800 GAPI/cps