



# MICRORESISTIVITY LOG

Company **STROKE OF LUCK ENERGY & EXP**  
 Well **MCLELLAN #1-0916**  
 Field **MCLELLAN**  
 County **ROOKS** State **KANSAS**

Location: **API # : 15-163-24322-00-00**  
**1620' FSL & 600' FWL**  
 SEC 9 TWP 9S RGE 19W  
 Other Services: **CNL/CDL DIL**

Permanent Datum **GROUND LEVEL** Elevation  
 Log Measured From **KELLY BUSHING**  
 Drilling Measured From **KELLY BUSHING**  
 Date **9/17/2016**  
 K.B. Elevation  
 D.F. **N/A**  
 G.L.

Run Number	ONE
Depth Driller	3560'
Depth Logger	3562'
Bottom Logged Interval	3561'
Top Log Interval	3000'
Casing Driller	8.625" @ 221'
Casing Logger	221'
Bit Size	7.875"
Type Fluid in Hole	CHEMICAL
Salinity ppm Cl	8000
Density / Viscosity	9.1 47
pH / Fluid Loss	12.8 9.0
Source of Sample	FLOWLINE
Rm @ Meas Temp	0.42 @ 84
Rmt @ Meas Temp	0.32 @ 84
Rmc @ Meas Temp	0.57 @ 84
Source of Rmt/ Rmc	CHARTS
Rm @ BHT	0.32 @ 112
Operating Rig Time	4 HOURS
Max Rec. Temp. F	112
Equipment Number	91
Location	COLBY
Recorded By	D. SCHMIDT
Witnessed By	JERRY GREEN

<<< Fold Here >>>

All interpretations are opinions based on inferences from electrical or other measurements and Pioneer Wireline Services, LLC cannot and does not guarantee the accuracy or correctness of any interpretation, and Pioneer Wireline Services, LLC will not be liable or responsible for any loss, costs, damages, or expenses incurred or sustained by anyone resulting from any interpretation made by any of our officers, agents or employees.

Comments  
**N/A DENOTES NOT AVAILABLE OR NON-APPLICABLE.**  
**ZURICH,**  
**3 NORTH TO U RD, 1 WEST TO 9 RD, 1/2 NORTH,**  
**EAST INTO**

Log Measured From: **KELLY BUSHING** 5 Ft. Above Permanent Datum

THANK YOU FOR USING PIONEER ENERGY SERVICES  
 www.pioneeres.com 785-625-3858

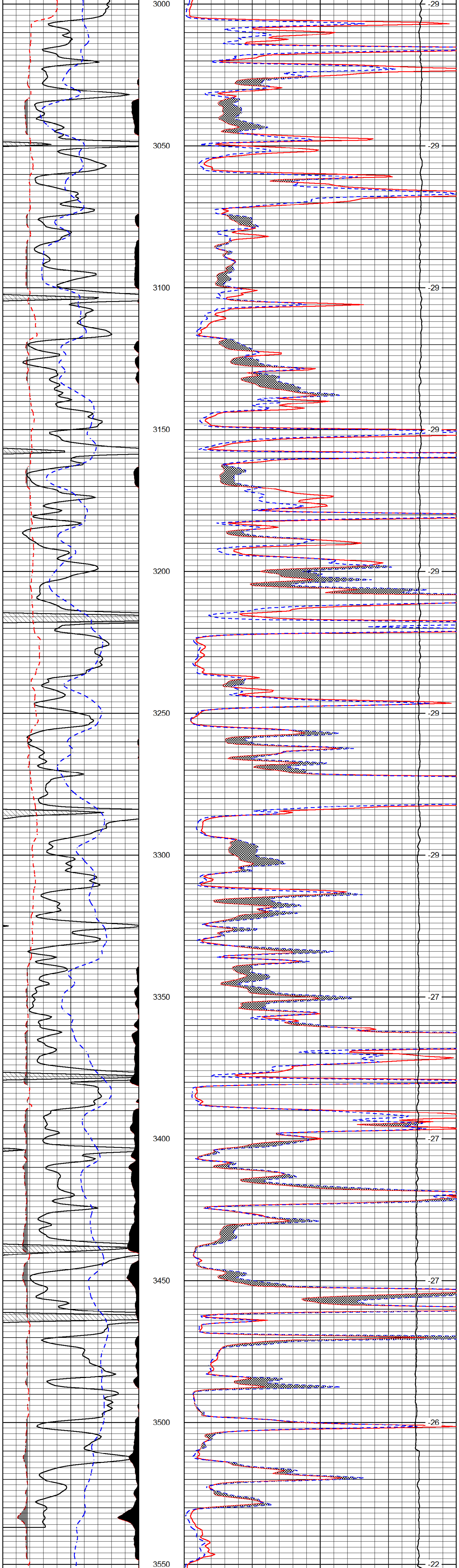
Your Pioneer Energy Services Crew  
 Engineer: **D. SCHMIDT**  
 Operator:  
 Operator:  
 Operator:

This Log Record Was Witnessed By  
 Primary Witness: **JERRY GREEN**  
 Secondary Witness:  
 Secondary Witness:  
 Secondary Witness:

Database File	stroke luck_mclellan_1-0916hd.db
Dataset Pathname	DIL/ststkml
Presentation Format	micro
Dataset Creation	Sat Sep 17 19:24:30 2016
Charted by	Depth in Feet scaled 1:240

0	Gamma Ray (GAPI)	150
6	MCAL (in)	16
2.875	Mud Cake (in)	7.875
-200	SP (mV)	0

0	Micro Inverse 1 X 1 (Ohm-m)	40
0	Micro Normal 2" (Ohm-m)	40
10000	Line Weight (lb)	0



0	Gamma Ray (GAPI)	150
6	MCAL (in)	16
2.875	Mud Cake (in)	7.875
-200	SP (mV)	0

0	Micro Inverse 1 X 1 (Ohm-m)	40
0	Micro Normal 2" (Ohm-m)	40
10000	Line Weight (lb)	0