



DUAL INDUCTION LOG

Company VAL ENERGY, INC.
Well ROBERT NO. 1-17
Field UNKNOWN
County THOMAS
State KANSAS

Company VAL ENERGY, INC.
Well ROBERT NO. 1-17
Field UNKNOWN
County THOMAS
State KANSAS

Location: API #: 15-193-20962-00-00
 NW-NE-SE-SW
 1188' FSL & 2305' FWL
 SEC 17 TWP 8S RGE 35W
Permanent Datum GROUND LEVEL Elevation 3333'
Log Measured From KELLY BUSHING
Drilling Measured From KELLY BUSHING

Other Services
 CNL/CDL
 MEL

| | |
|------------------------|---------------|
| Date | 1/13/16 |
| Run Number | ONE |
| Depth Driller | 4870' |
| Depth Logger | 4871' |
| Bottom Logged Interval | 4870' |
| Top Log Interval | 250' |
| Casing Driller | 8.625" @ 259' |
| Casing Logger | 260' |
| Bit Size | 7.875" |
| Type Fluid in Hole | CHEMICAL |
| Salinity, ppm CL | 9,000 |
| Density / Viscosity | 8.9 58 |
| pH / Fluid Loss | 10.0 10.4 |
| Source of Sample | Flowline |
| Rm @ Meas. Temp | .35 @ 62 |
| Rmt @ Meas. Temp | .26 @ 62 |
| Rmc @ Meas. Temp | .47 @ 62 |
| Source of Rmf / Rmc | Charts |
| Rm @ BHT | .17 @ 125 |
| Operating Rig Time | 3 HOURS |
| Max Rec. Temp. F | 125 DEGF |
| Equipment Number | 108 |
| Location | Hays |
| Recorded By | J. HENRICKSON |
| Witnessed By | HARLEY SAYLES |
| | J. LONG |

<<< Fold Here >>>

All interpretations are opinions based on inferences from electrical or other measurements and Pioneer Wireline Services, LLC cannot and does not guarantee the accuracy or correctness of any interpretation, and Pioneer Wireline Services, LLC will not be liable or responsible for any loss, costs, damages, or expenses incurred or sustained by anyone resulting from any interpretation made by any of our officers, agents or employees.

Comments

N/A DENOTES NOT AVAILABLE OR NON-APPLICABLE.

LEVANT EXIT ON I70
1 SOUTH, 2 1/2 WEST, NORTH INTO

Log Measured From: KELLY BUSHING 5 Ft. Above Permanent Datum

THANK YOU FOR USING PIONEER ENERGY SERVICES
www.pioneerenergy.com 785-625-3858

| | |
|--|---|
| Your Pioneer Energy Services Crew Engineer: J. HENRICKSON Operator: J. LONG Operator: Operator: | This Log Record Was Witnessed By Primary Witness: HARLEY SAYLES Secondary Witness: Secondary Witness: Secondary Witness: |
|--|---|

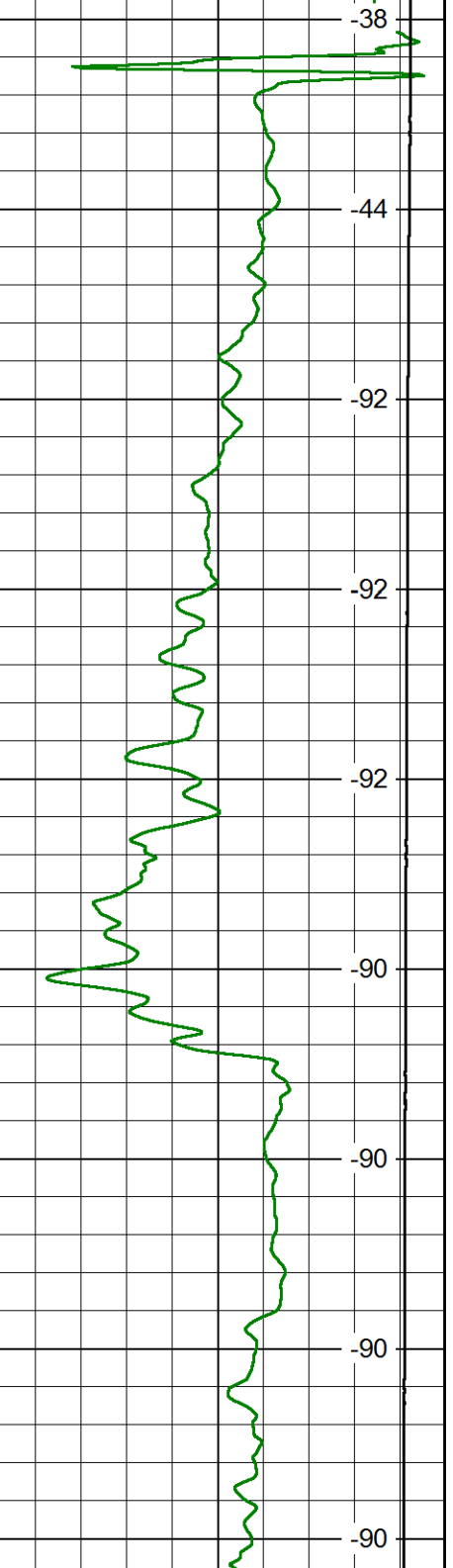
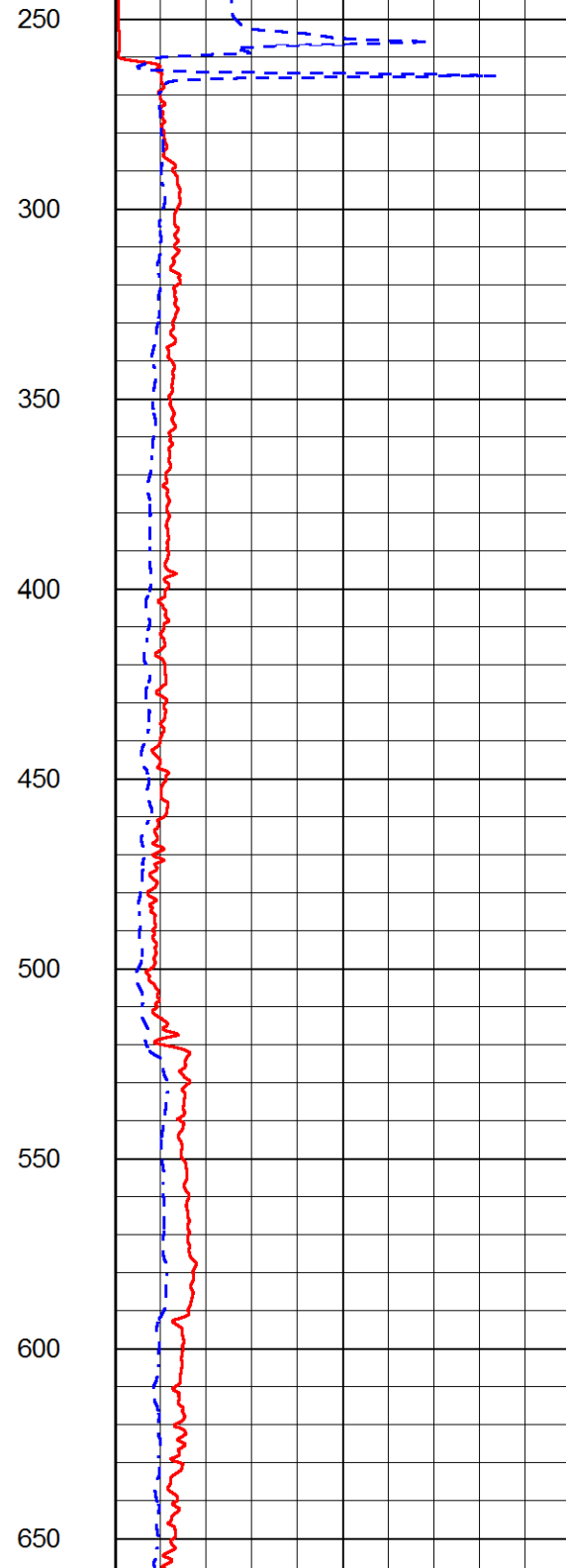
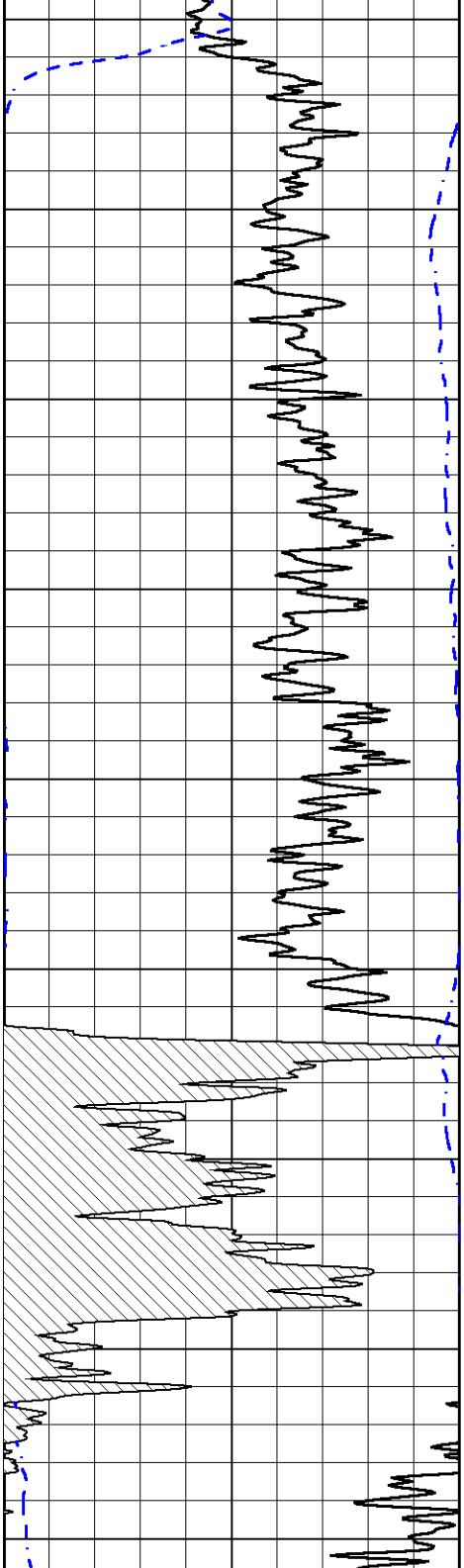
Database File val_roberts_1_17hd.db
 Dataset Pathname DIL/valstkml
 Presentation Format dil2in
 Dataset Creation Wed Jan 13 21:40:48 2016
 Charted by Depth in Feet scaled 1:600

0 Gamma Ray (GAPI) 150
 -200 SP (mV) 0

1000 Conductivity 0
 15000 Line Tension (lb) 0

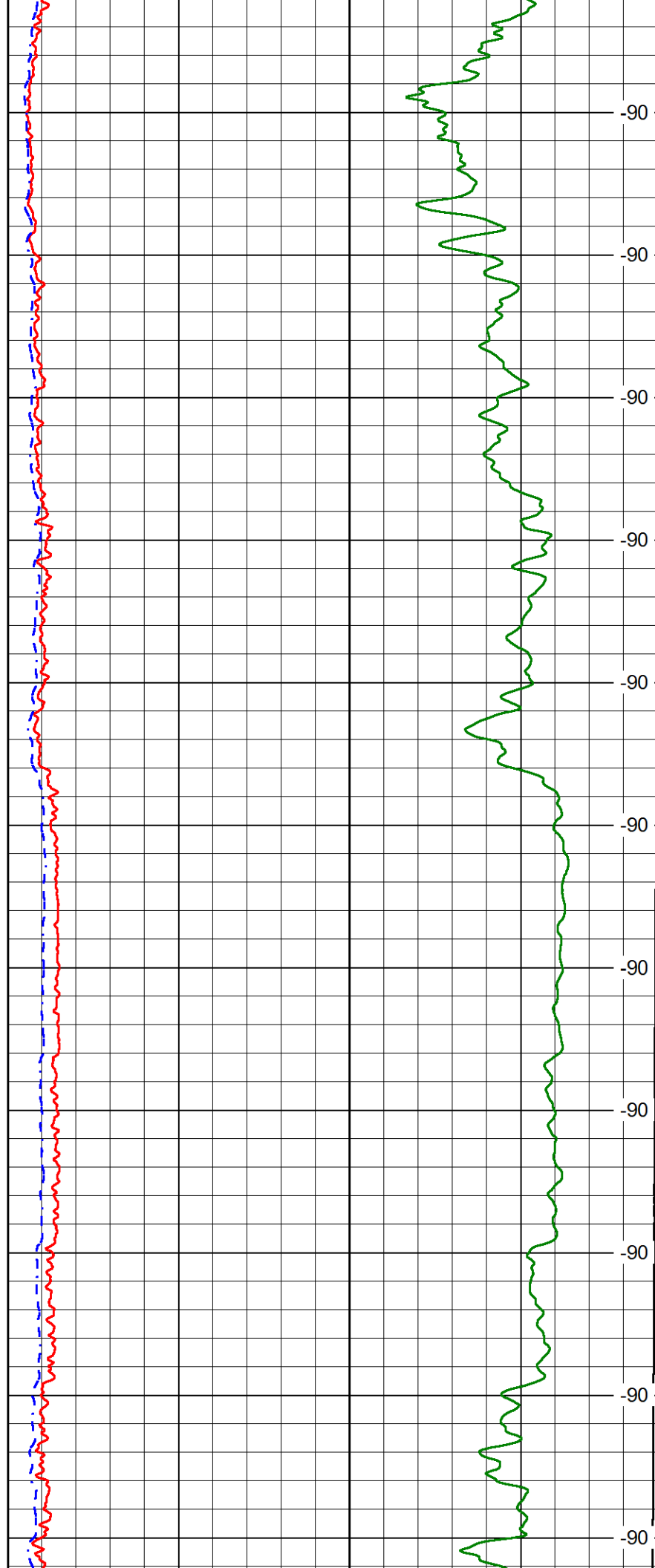
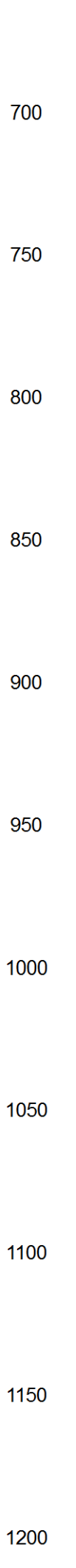
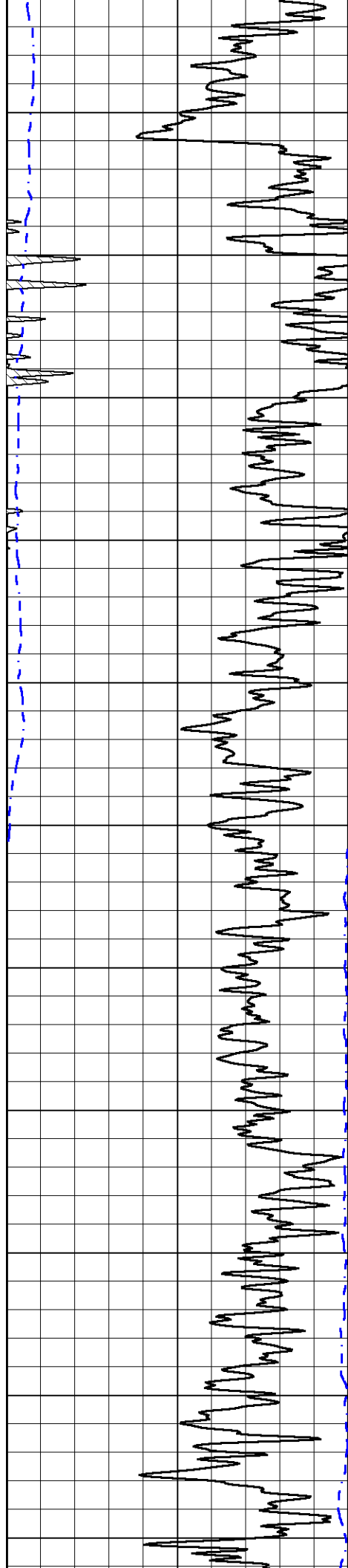
0 Shallow Resistivity (Ohm-m) 50
 0 Deep Resistivity (Ohm-m) 50
 Shallow Resistivity (Ohm-m) 500
 50 Deep Resistivity (Ohm-m) 500

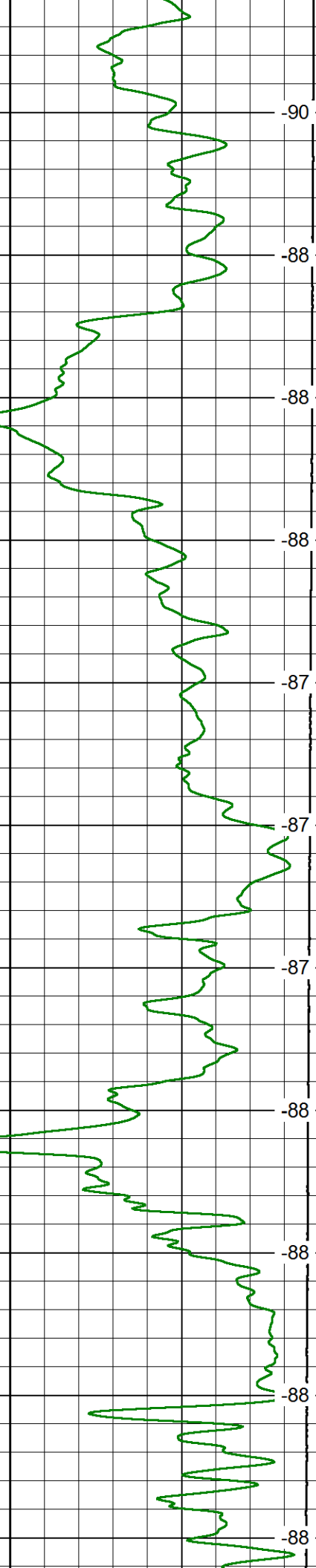
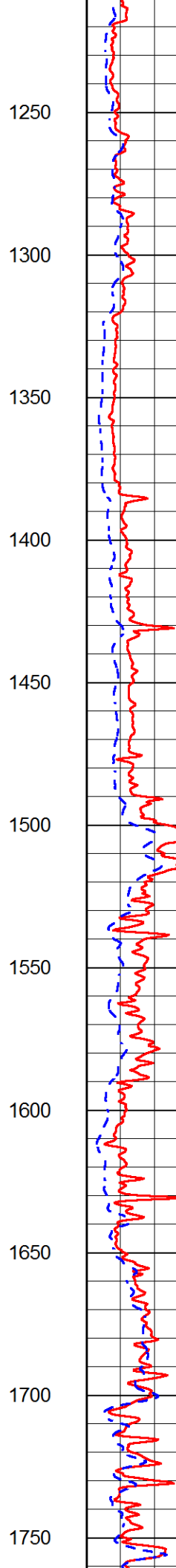
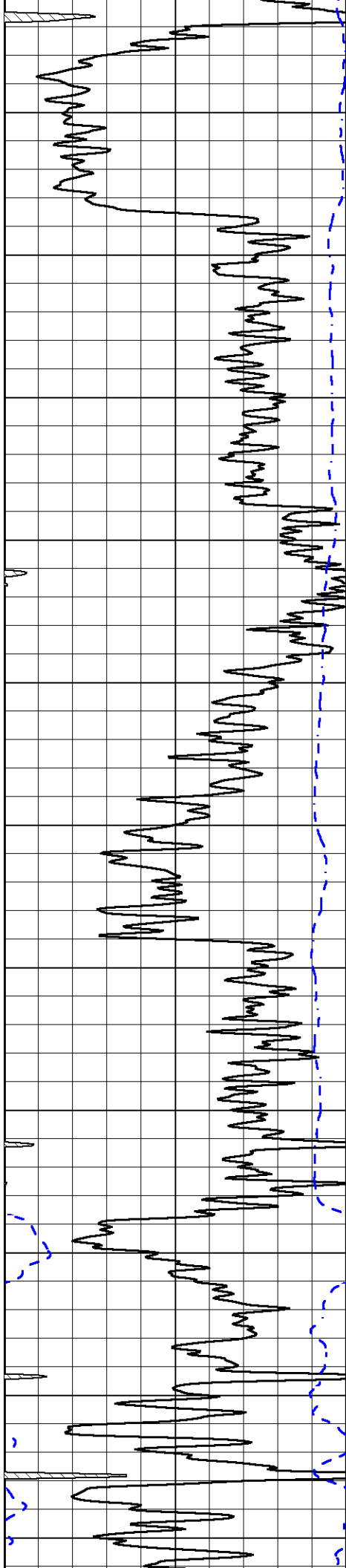
LSPD (ft/min)

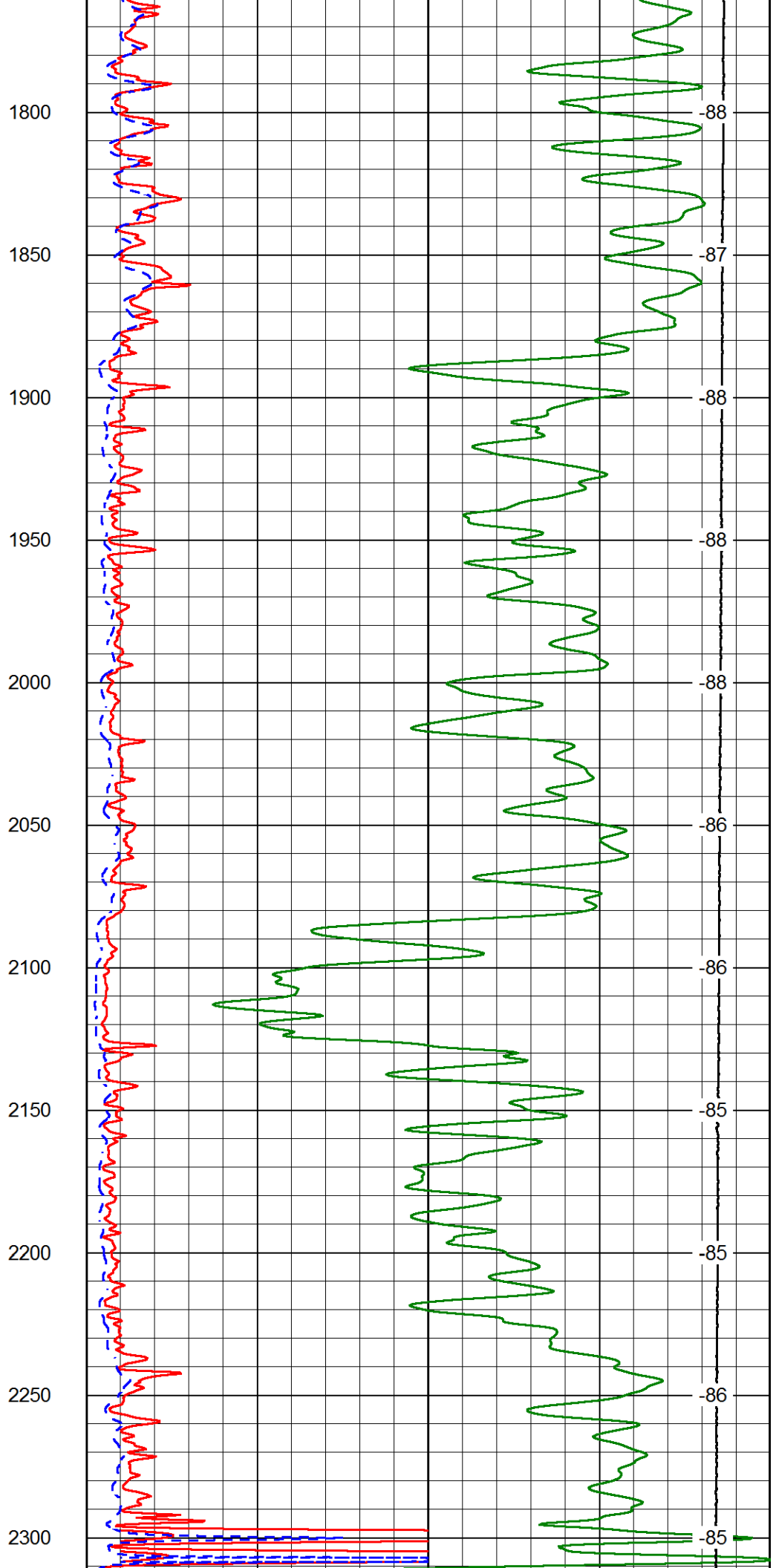
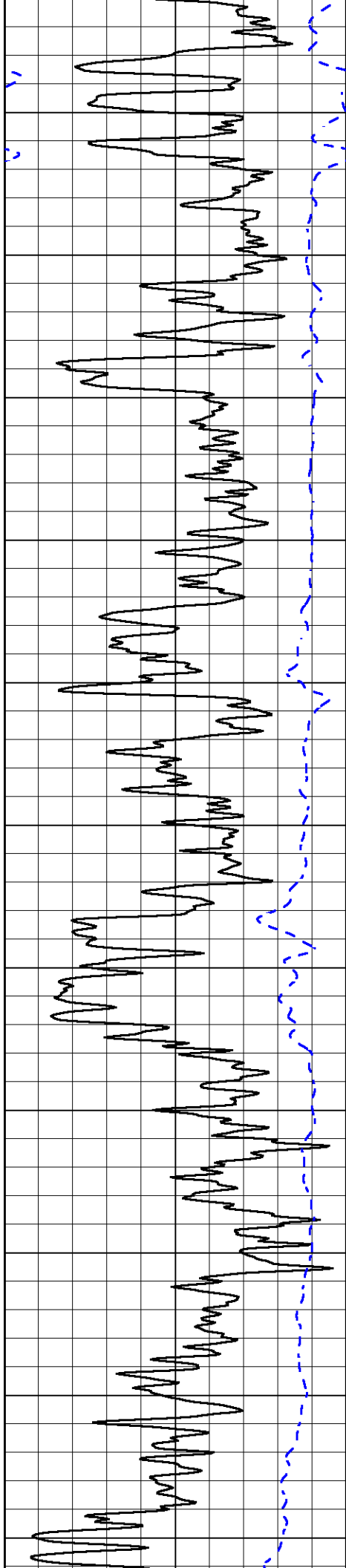


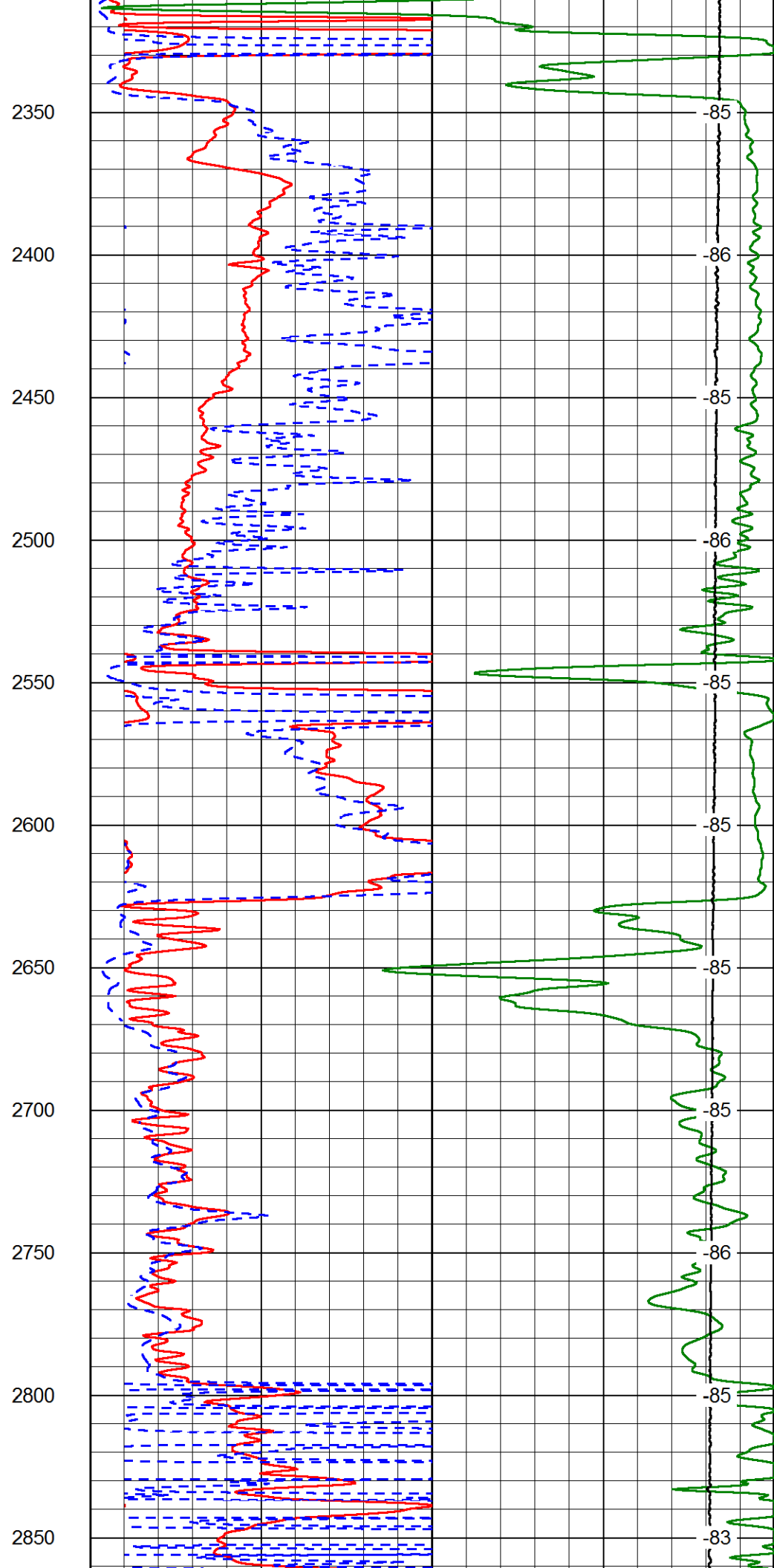
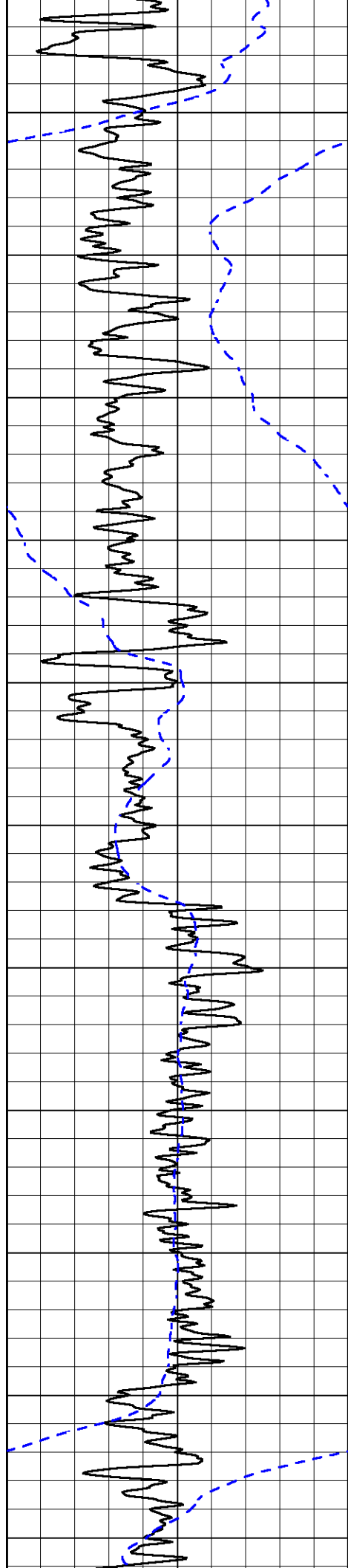
250
 300
 350
 400
 450
 500
 550
 600
 650

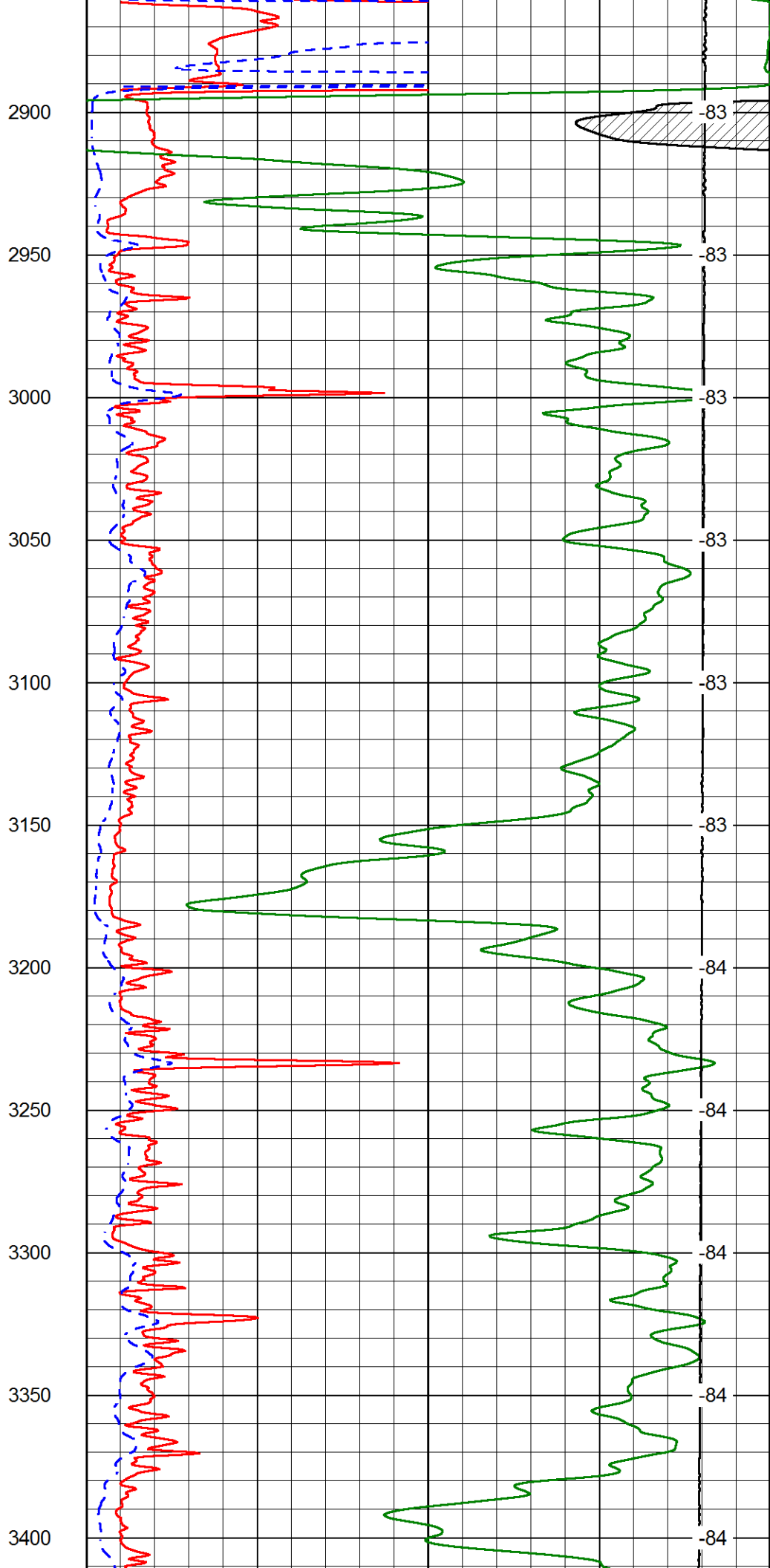
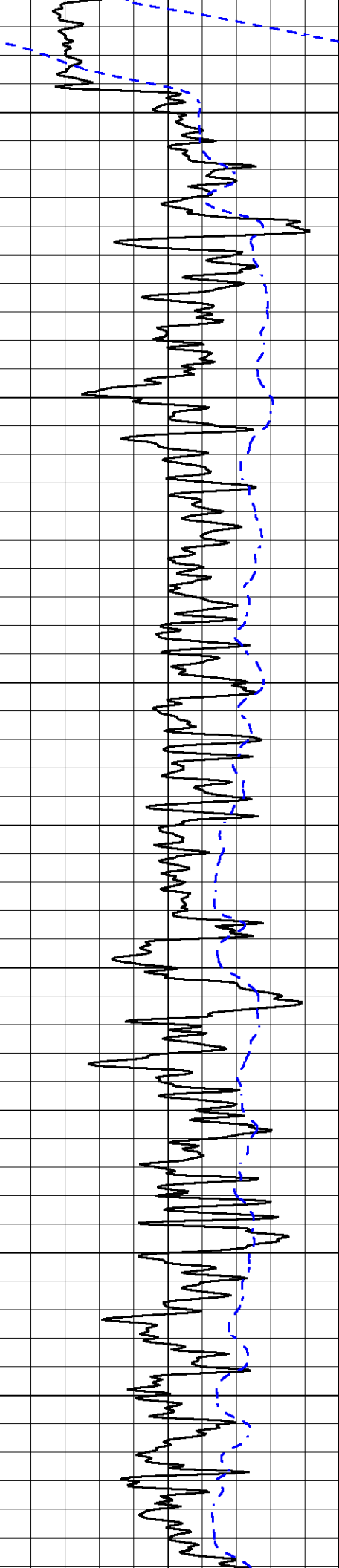
-38
 -44
 -92
 -92
 -92
 -90
 -90
 -90

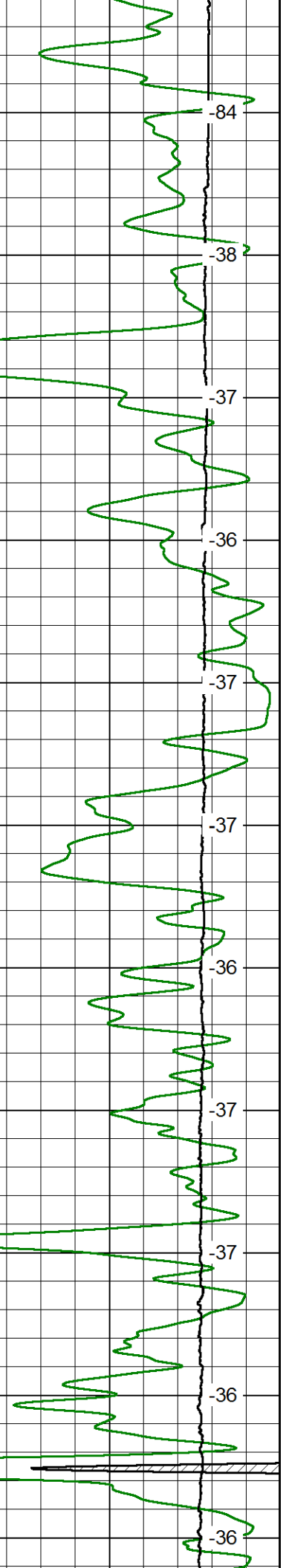
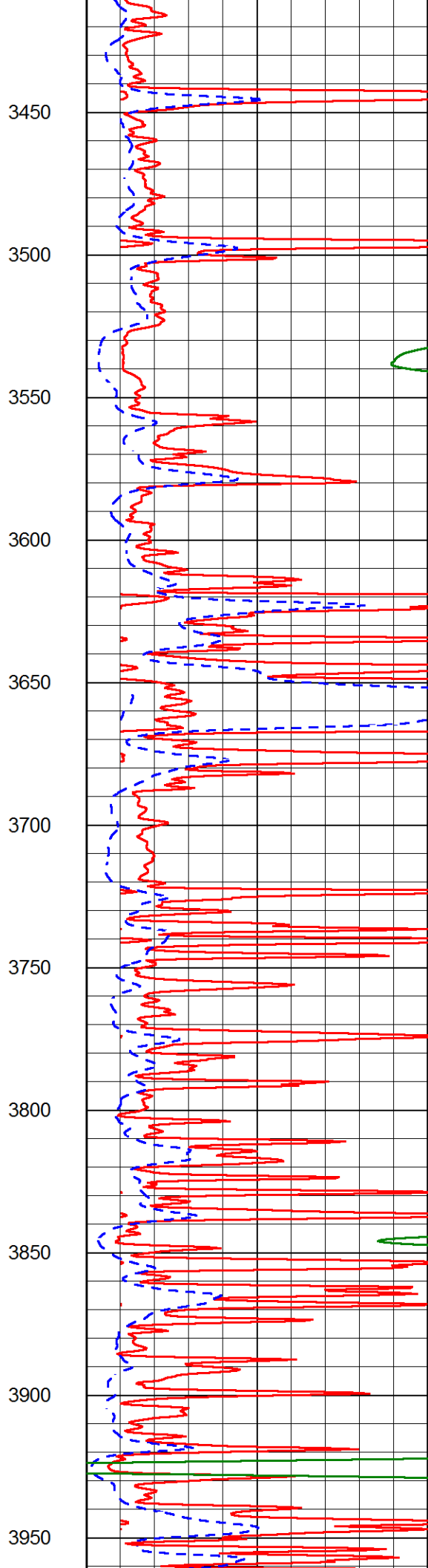
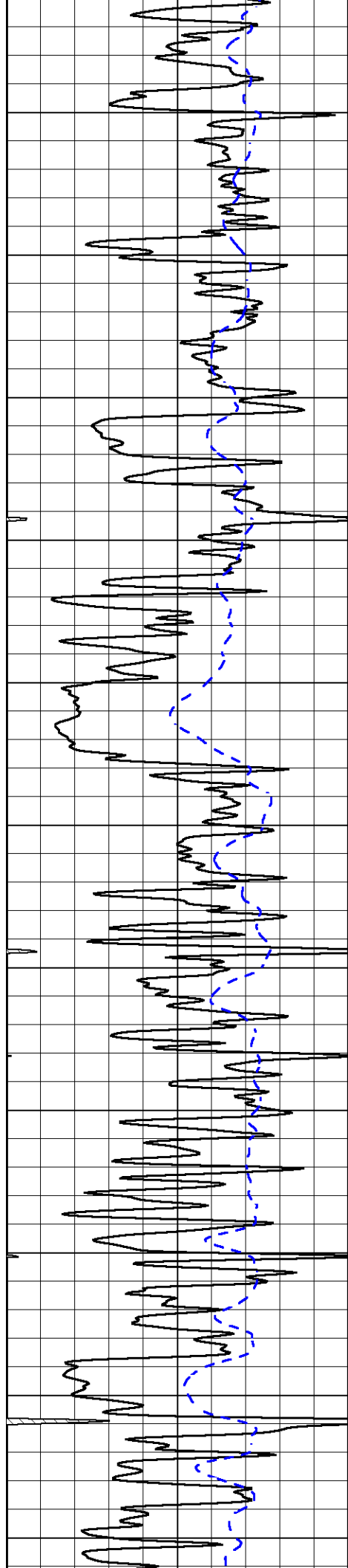


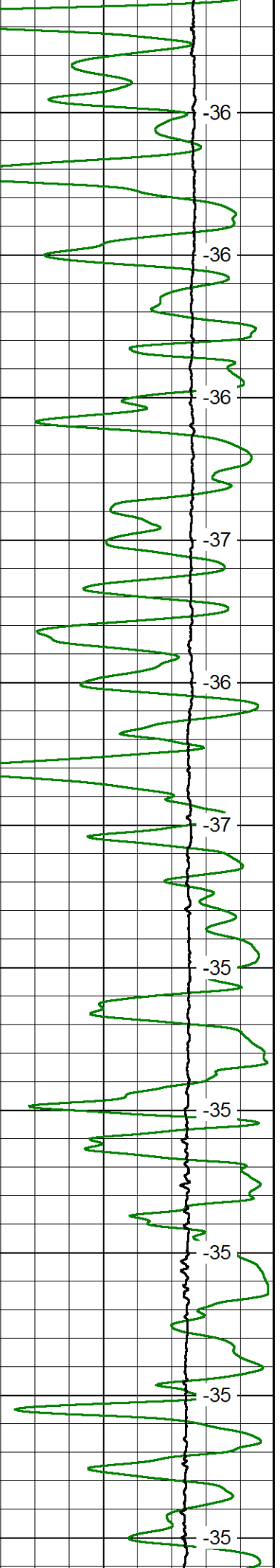
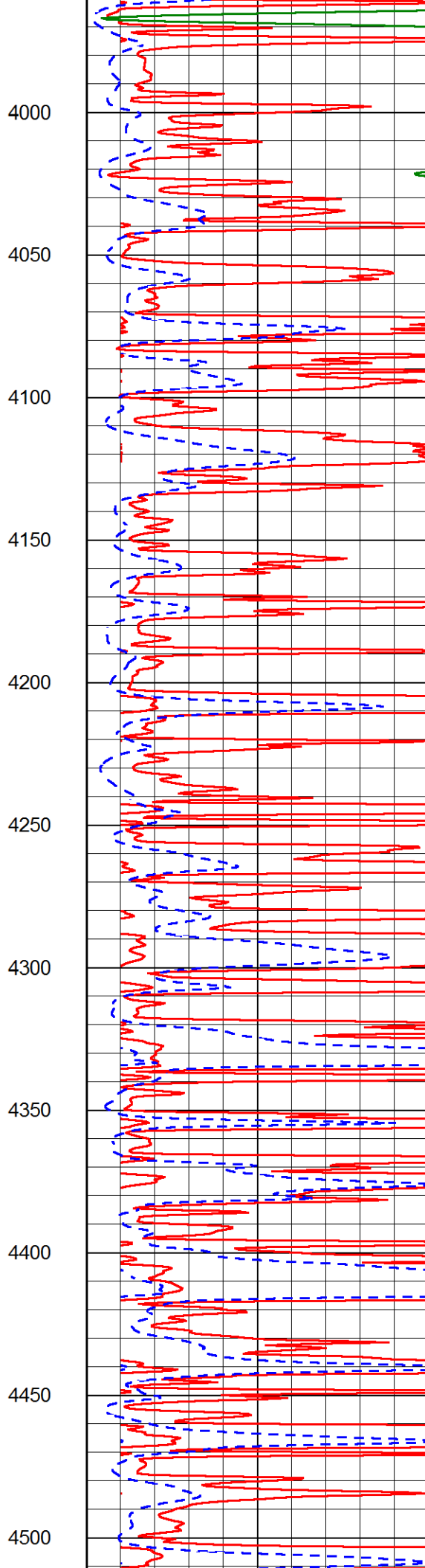
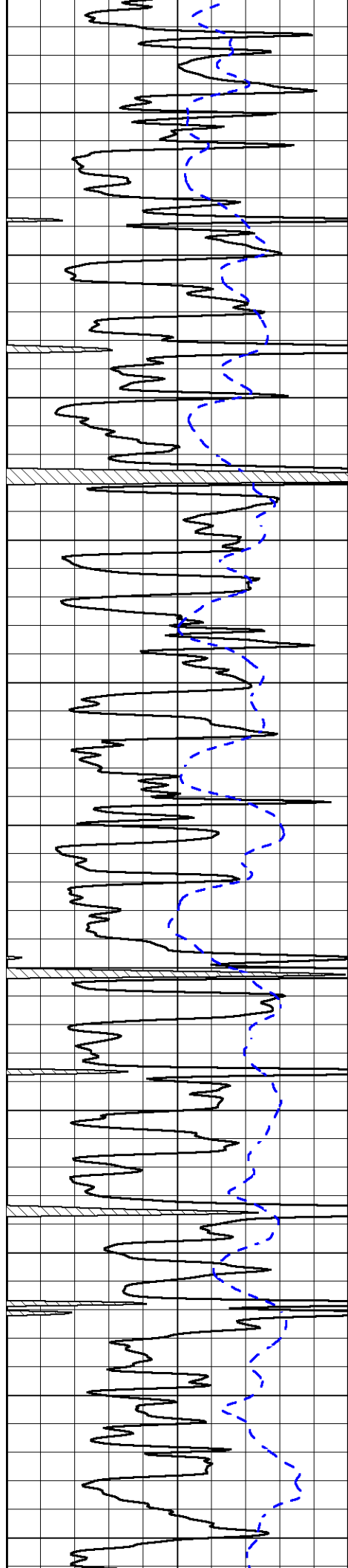






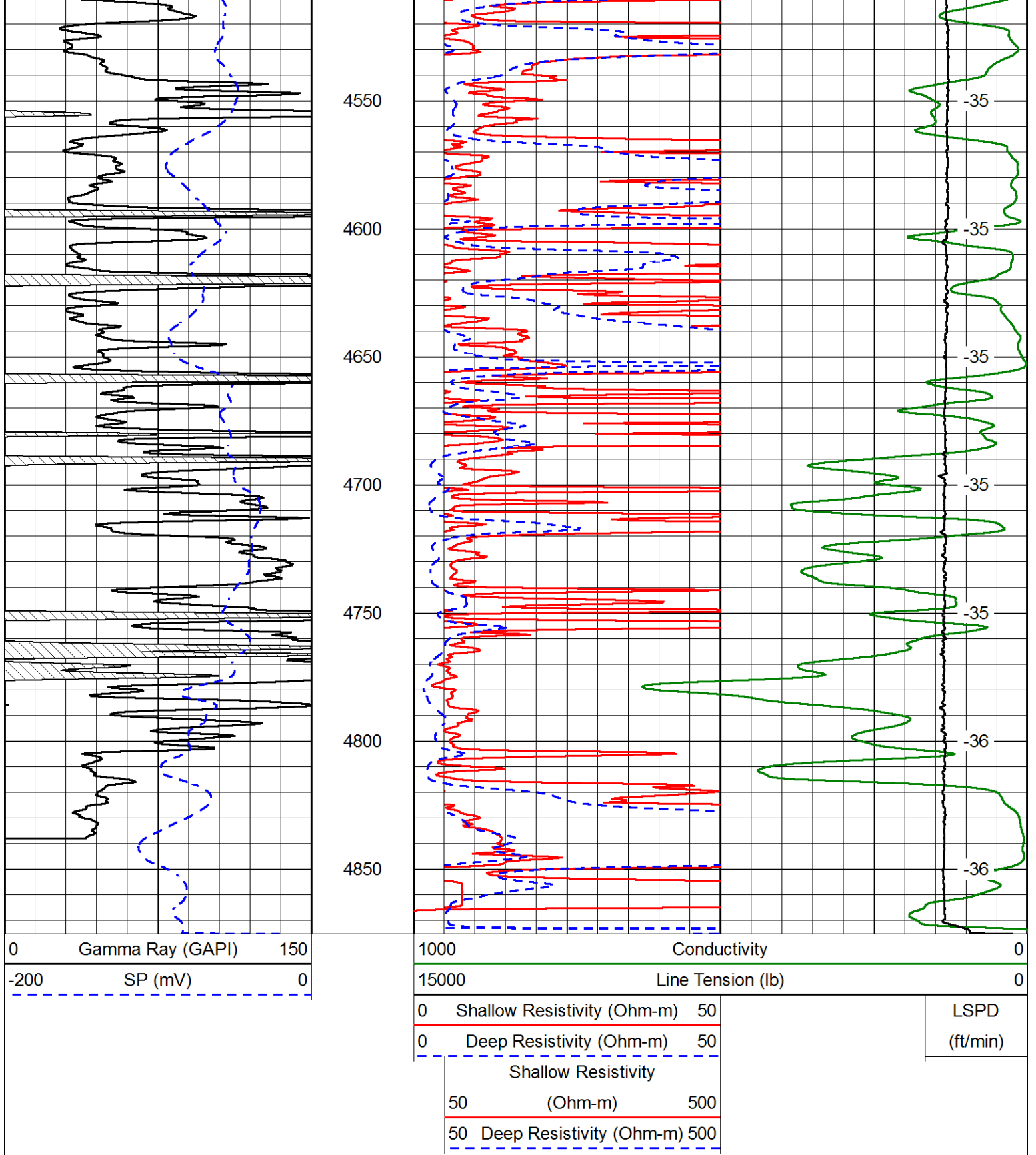




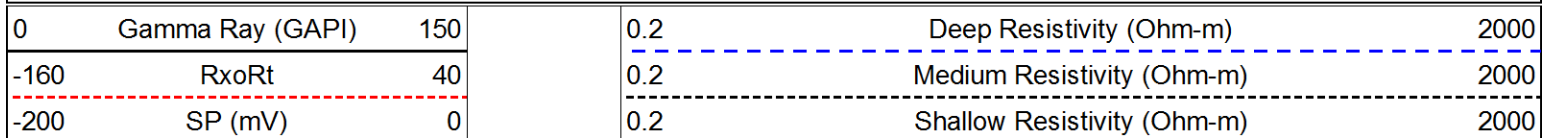


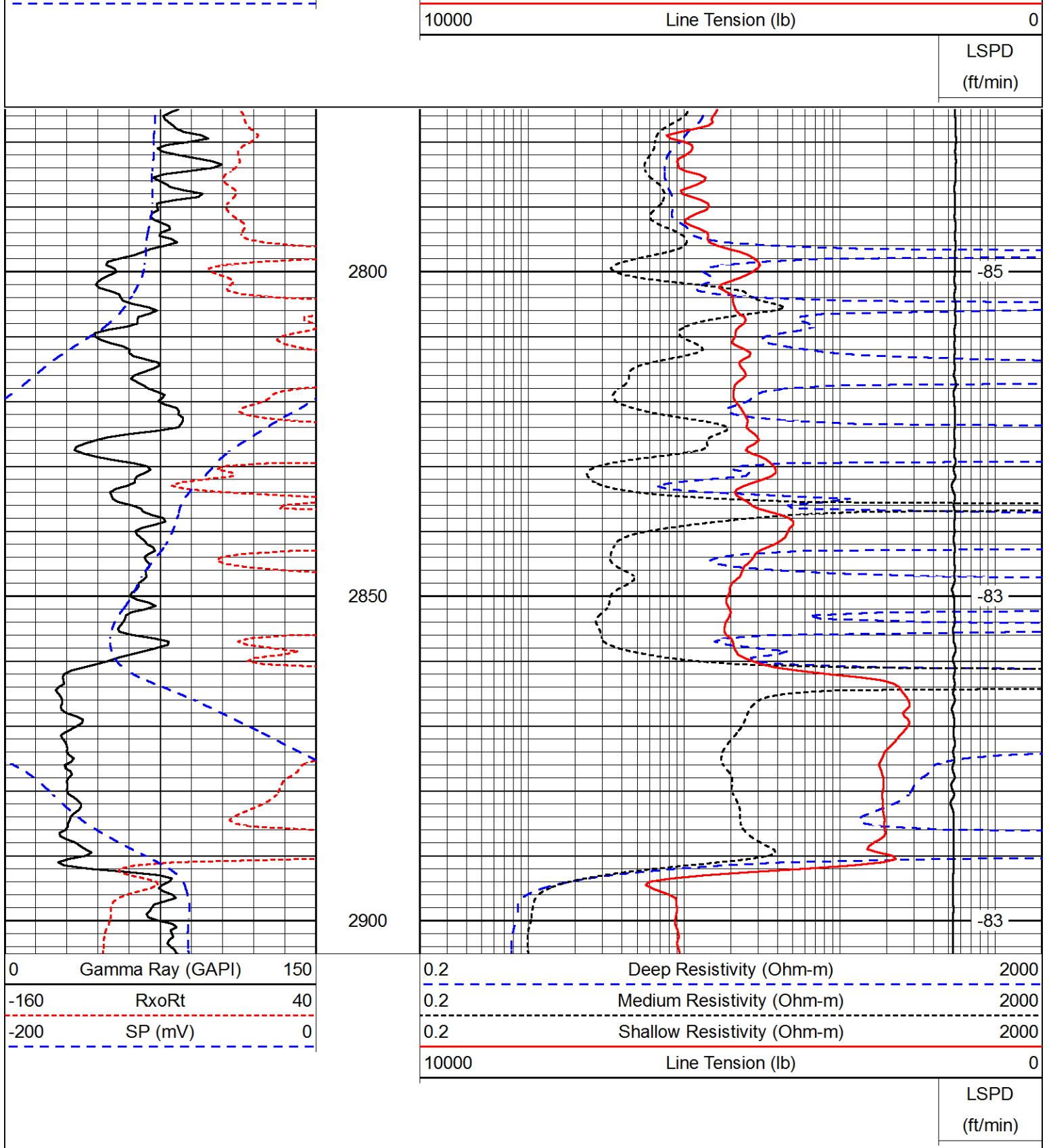
4000
4050
4100
4150
4200
4250
4300
4350
4400
4450
4500

-36
-36
-36
-37
-36
-37
-35
-35
-35
-35

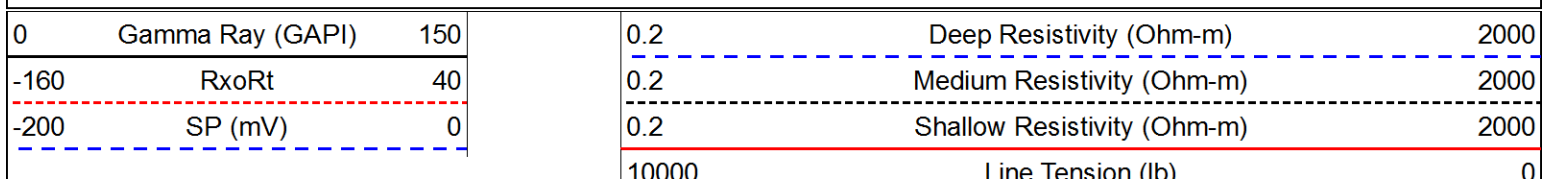


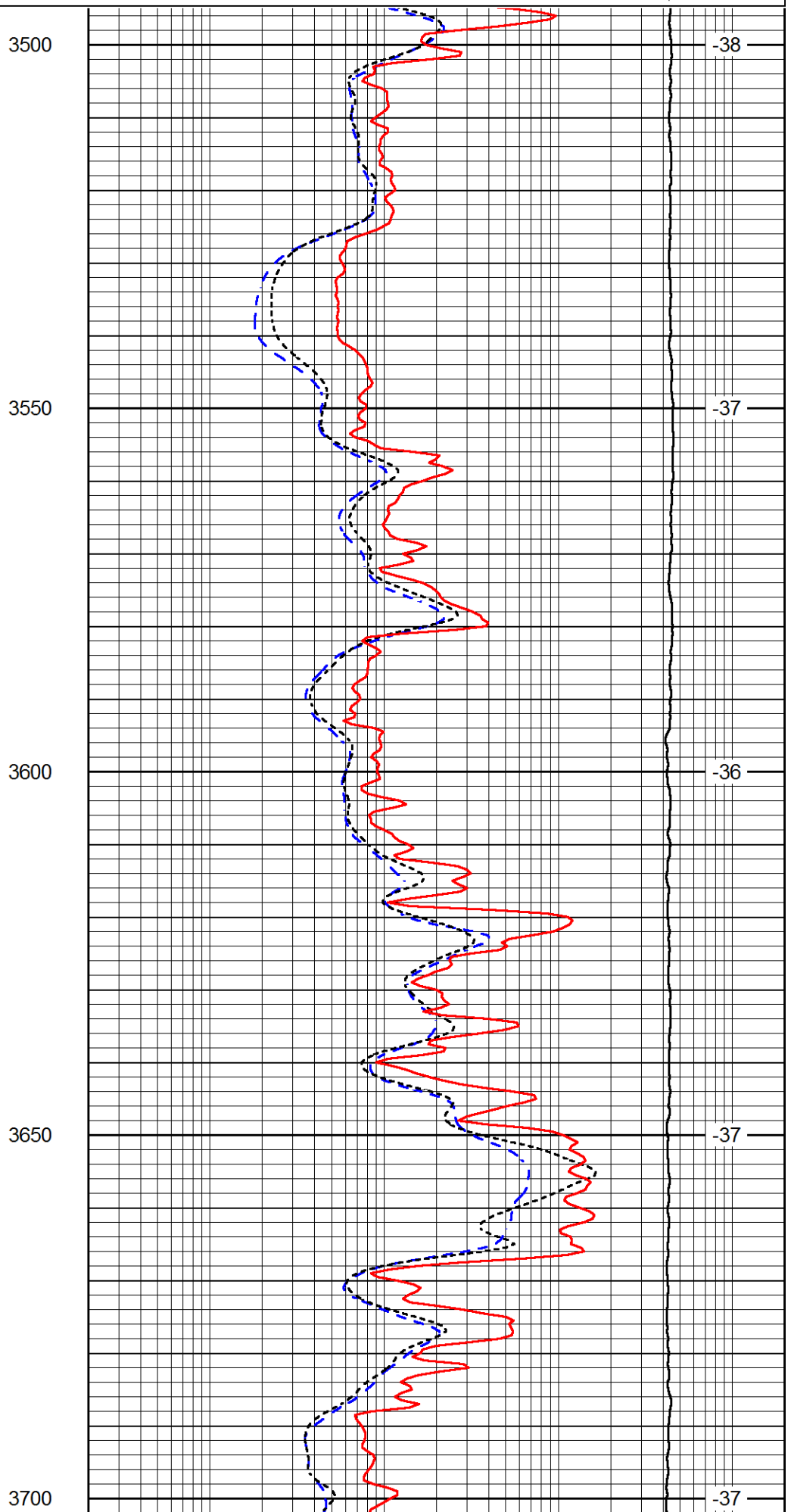
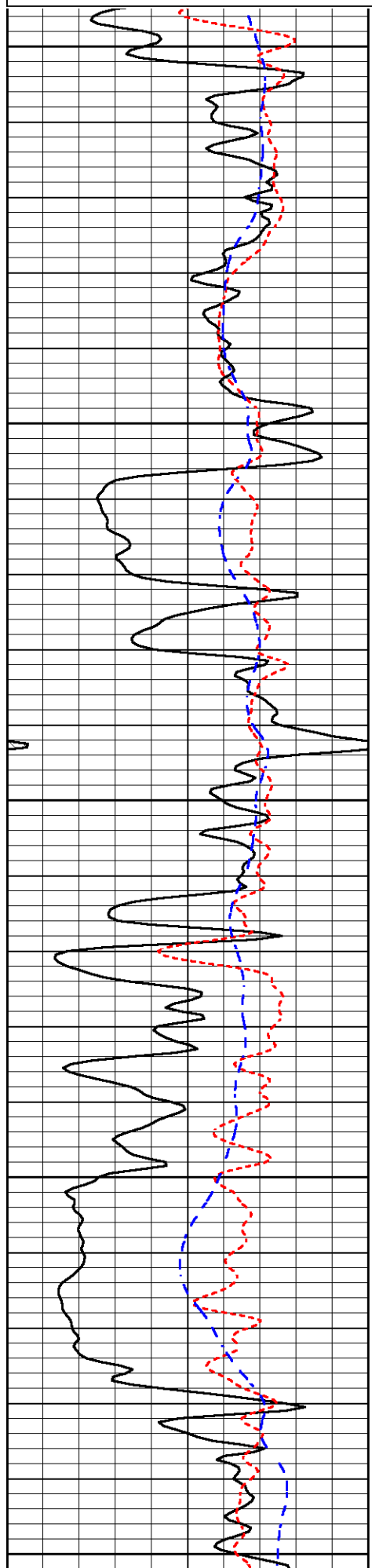
Database File val_roberts_1_17hd.db
 Dataset Pathname DIL/valstkml
 Presentation Format dil
 Dataset Creation Wed Jan 13 21:40:48 2016
 Charted by Depth in Feet scaled 1:240

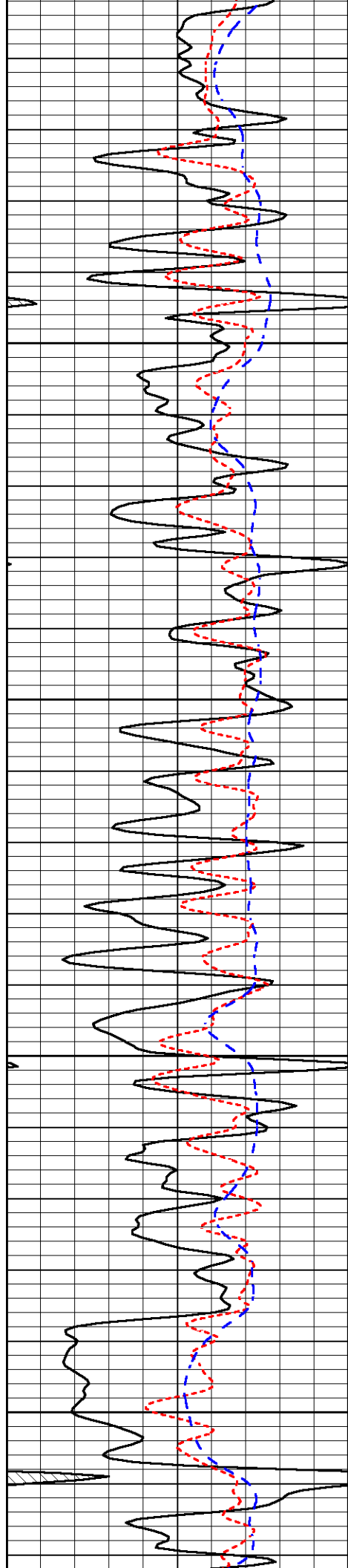




Database File val_roberts_1_17hd.db
 Dataset Pathname DIL/valstkml
 Presentation Format dil
 Dataset Creation Wed Jan 13 21:40:48 2016
 Charted by Depth in Feet scaled 1:240





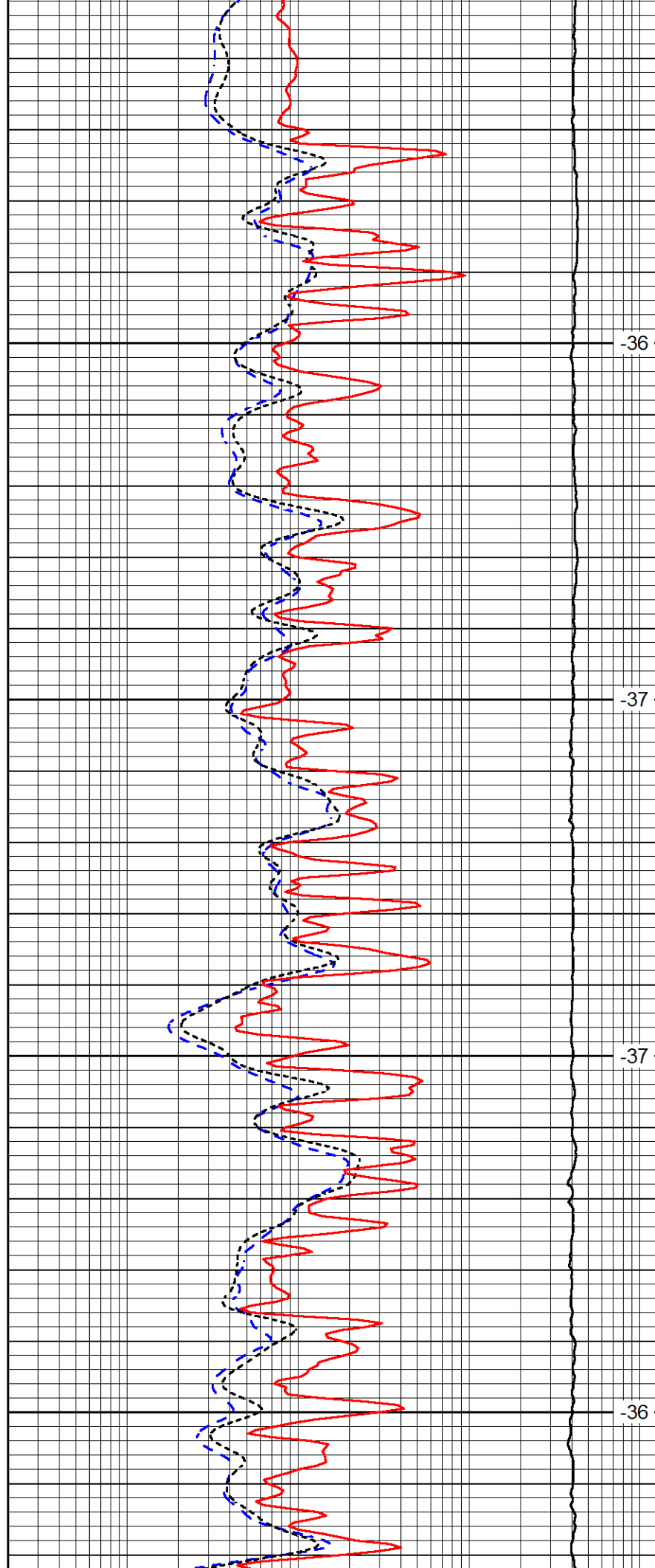


3750

3800

3850

3900

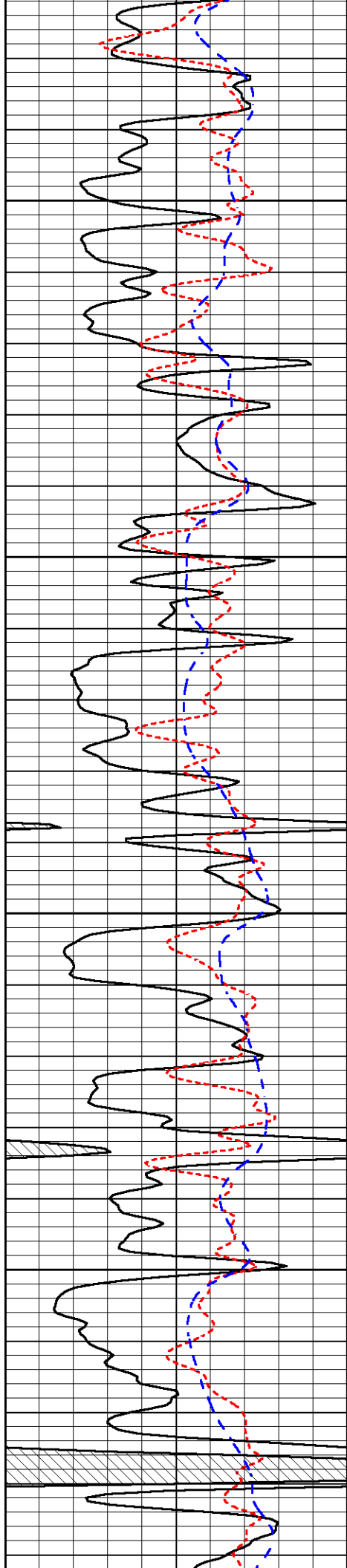


-36

-37

-37

-36

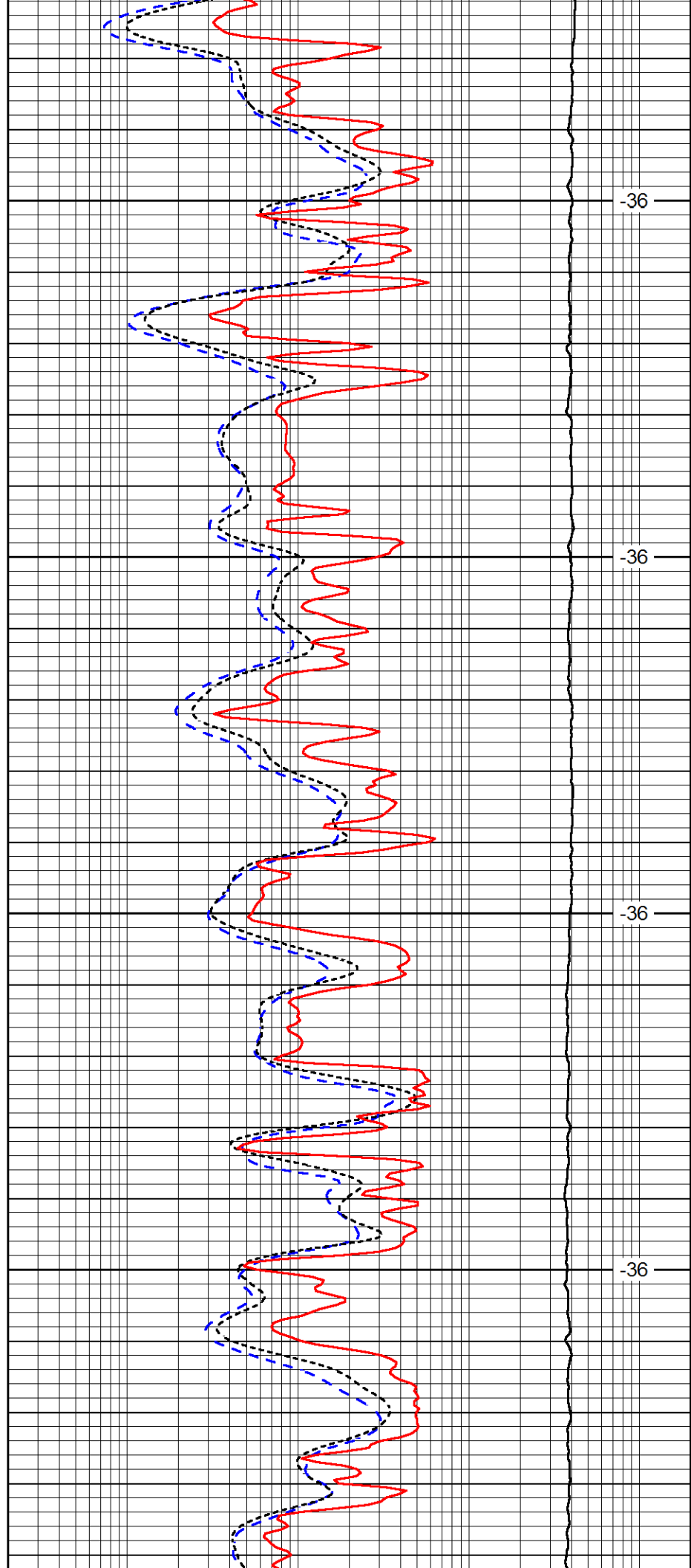


3950

4000

4050

4100

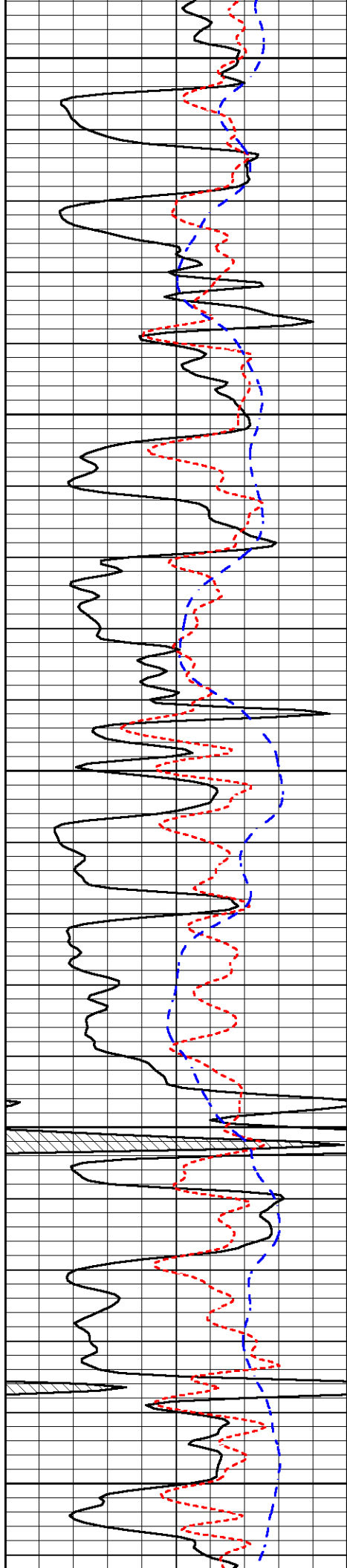


-36

-36

-36

-36



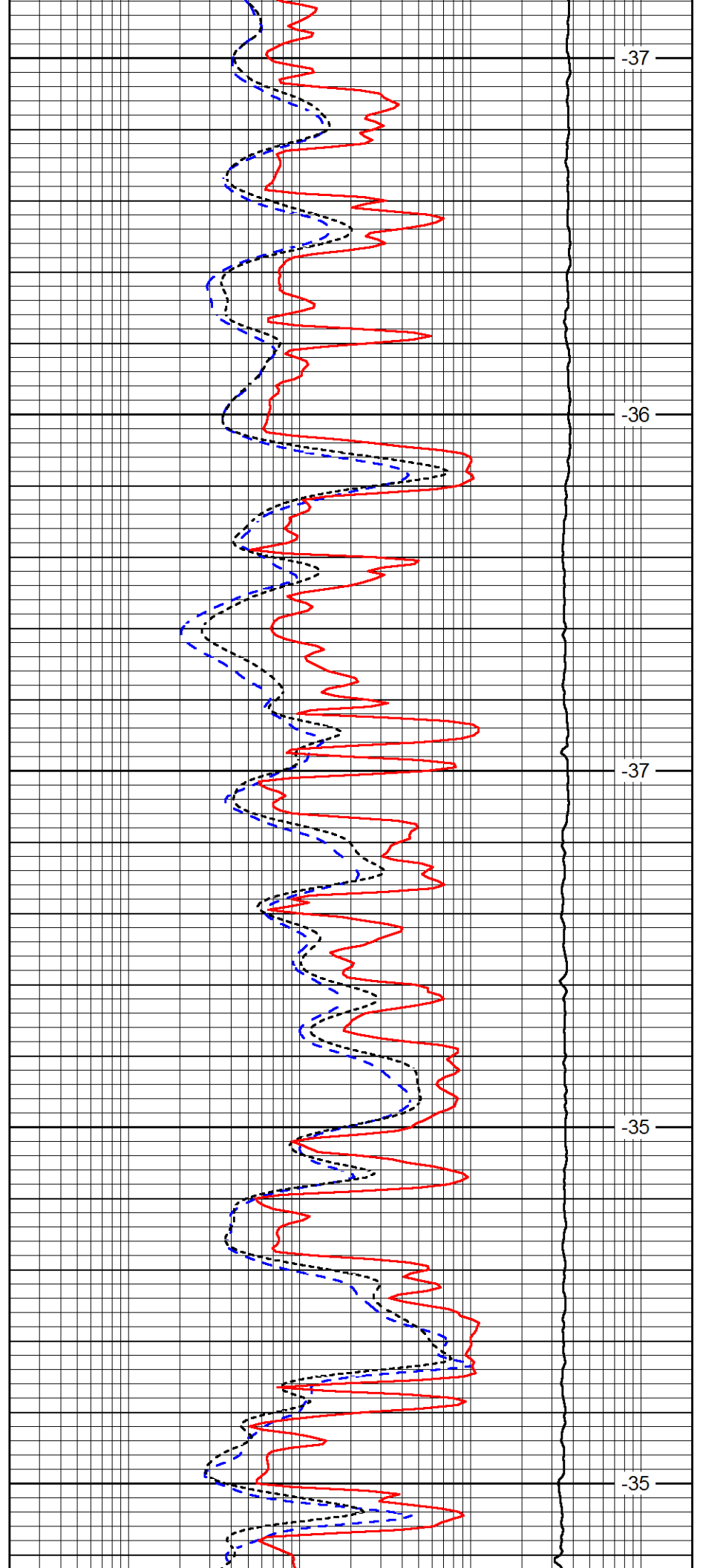
4150

4200

4250

4300

4350



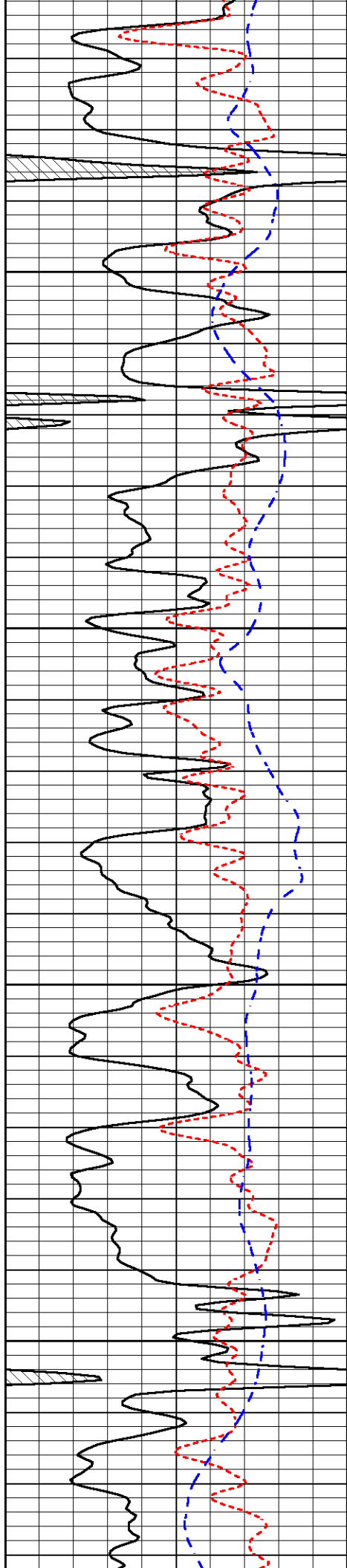
-37

-36

-37

-35

-35

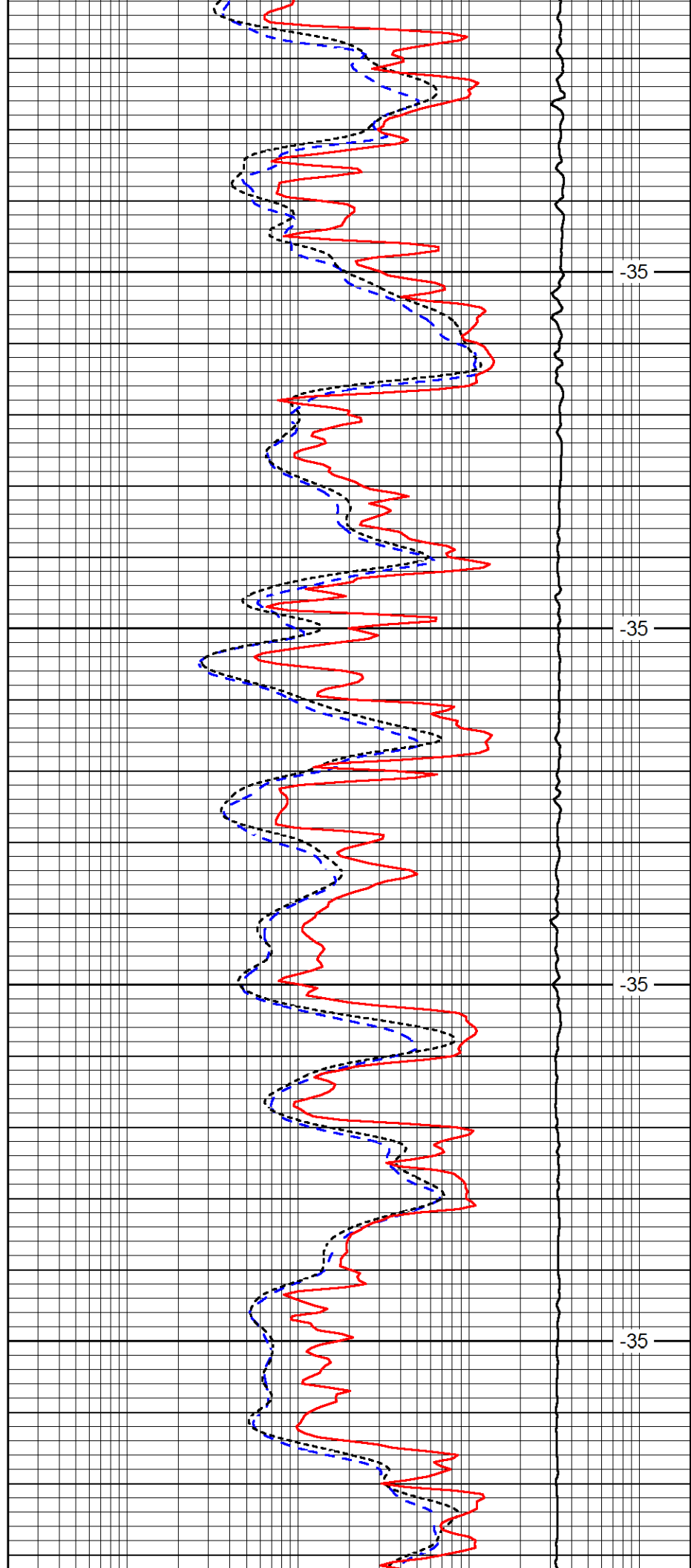


4400

4450

4500

4550

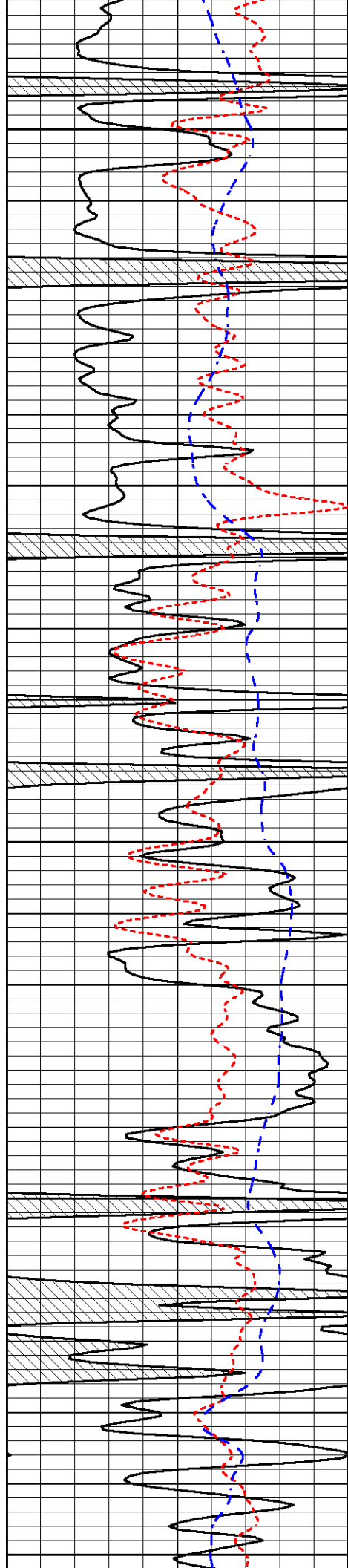


-35

-35

-35

-35



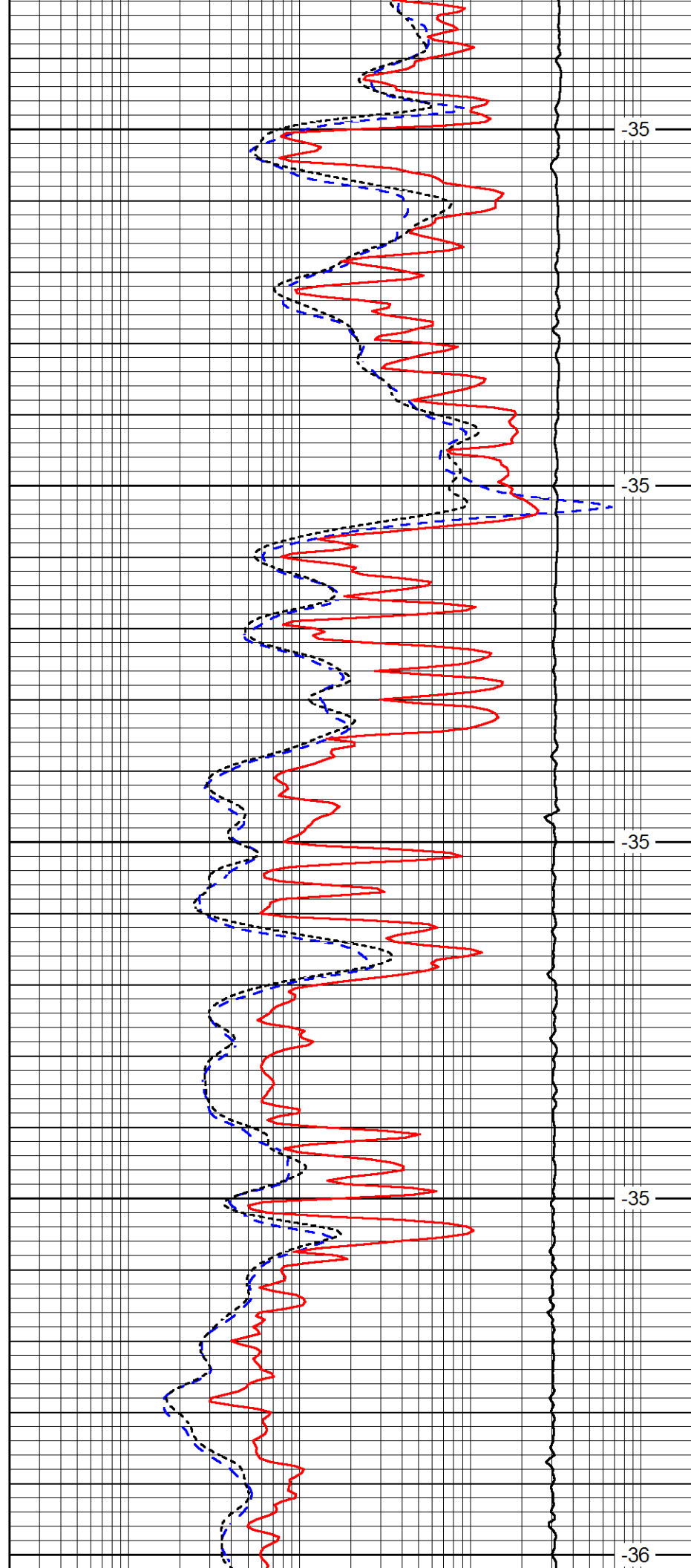
4600

4650

4700

4750

4800



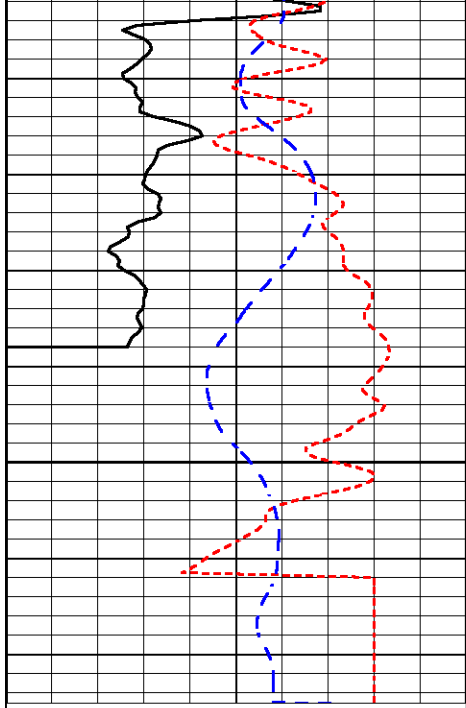
-35

-35

-35

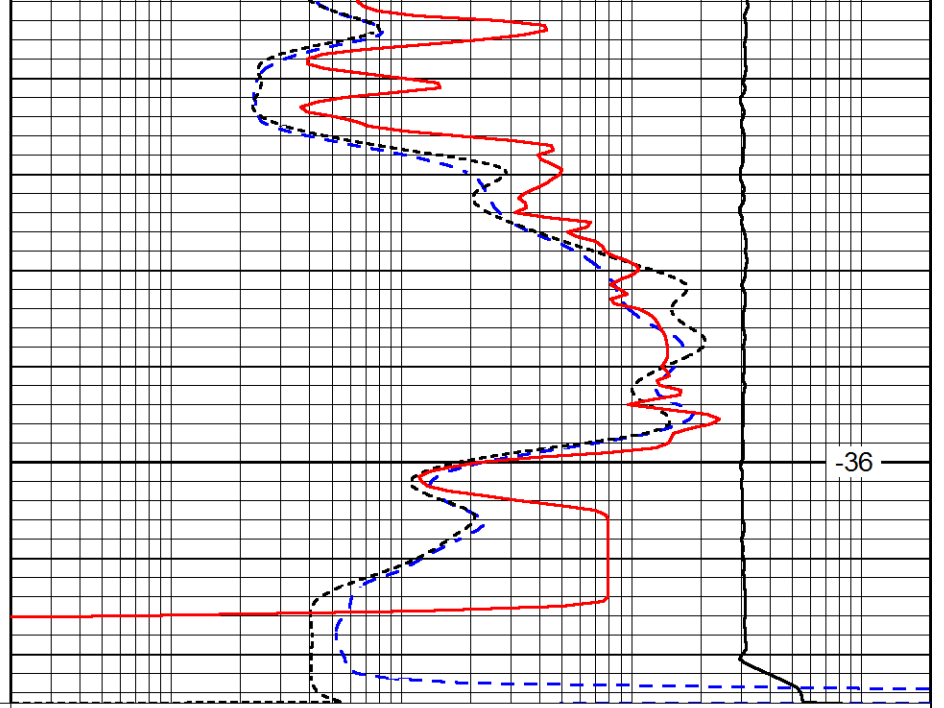
-35

-36



4850

| | | |
|------|------------------|-----|
| 0 | Gamma Ray (GAPI) | 150 |
| -160 | RxoRt | 40 |
| -200 | SP (mV) | 0 |



-36

| | | |
|-------|-----------------------------|------|
| 0.2 | Deep Resistivity (Ohm-m) | 2000 |
| 0.2 | Medium Resistivity (Ohm-m) | 2000 |
| 0.2 | Shallow Resistivity (Ohm-m) | 2000 |
| 10000 | Line Tension (lb) | 0 |

LSPD
(ft/min)