



# DUAL COMP POROSITY LOG

Company VAL ENERGY, INC.  
 Well ROBERT NO. 1-17  
 Field UNKNOWN  
 County THOMAS  
 State KANSAS

Company VAL ENERGY, INC.  
 Well ROBERT NO. 1-17  
 Field UNKNOWN  
 County THOMAS State KANSAS

Location: API #: 15-193-20962-00-00  
 NW-NE-SE-SW  
 1188' FSL & 2305' FWL  
 SEC 17 TWP 8S RGE 35W  
 Permanent Datum GROUND LEVEL Elevation 3333'  
 Log Measured From KELLY BUSHING  
 Drilling Measured From KELLY BUSHING  
 Other Services DIL/MEL  
 Elevation  
 K.B. 3338'  
 D.F. N/A  
 G.L. 3333'

Date	1/13/16						
Run Number	ONE						
Type Log	CNL/CDL						
Depth Driller	4870'						
Depth Logger	4871'						
Bottom Logged Interval	4842'						
Top Logged Interval	3500'						
Type Fluid In Hole	CHEMICAL						
Salinity, PPM CL	9,000						
Density	8.9						
Level	FULL						
Max. Rec. Temp. F	125 DEG/F						
Operating Rig Time	3 HOURS						
Equipment -- Location	108 Hays						
Recorded By	J. HENRICKSON						
Witnessed By	HARLEY SAYLES						
Borehole Record							
Run No.	Bit	From	To	Size	Wgt.	From	To
ONE	12.25	00	259	8.625	23#	00	259
TWO	7.875	259	TD				
Casing Record							

<<< Fold Here >>>

All interpretations are opinions based on inferences from electrical or other measurements and Pioneer Wireline Services, LLC cannot and does not guarantee the accuracy or correctness of any interpretation, and Pioneer Wireline Services, LLC will not be liable or responsible for any loss, costs, damages, or expenses incurred or sustained by anyone resulting from any interpretation made by any of our officers, agents or employees.

Comments

N/A DENOTES NOT AVAILABLE OR NON-APPLICABLE.

LEVANT EXIT ON I70  
 1 SOUTH, 2 1/2 WEST, NORTH INTO

Log Measured From: KELLY BUSHING      5 Ft. Above Permanent Datum

THANK YOU FOR USING PIONEER ENERGY SERVICES  
[www.pioneerenergy.com](http://www.pioneerenergy.com)      785-625-3858

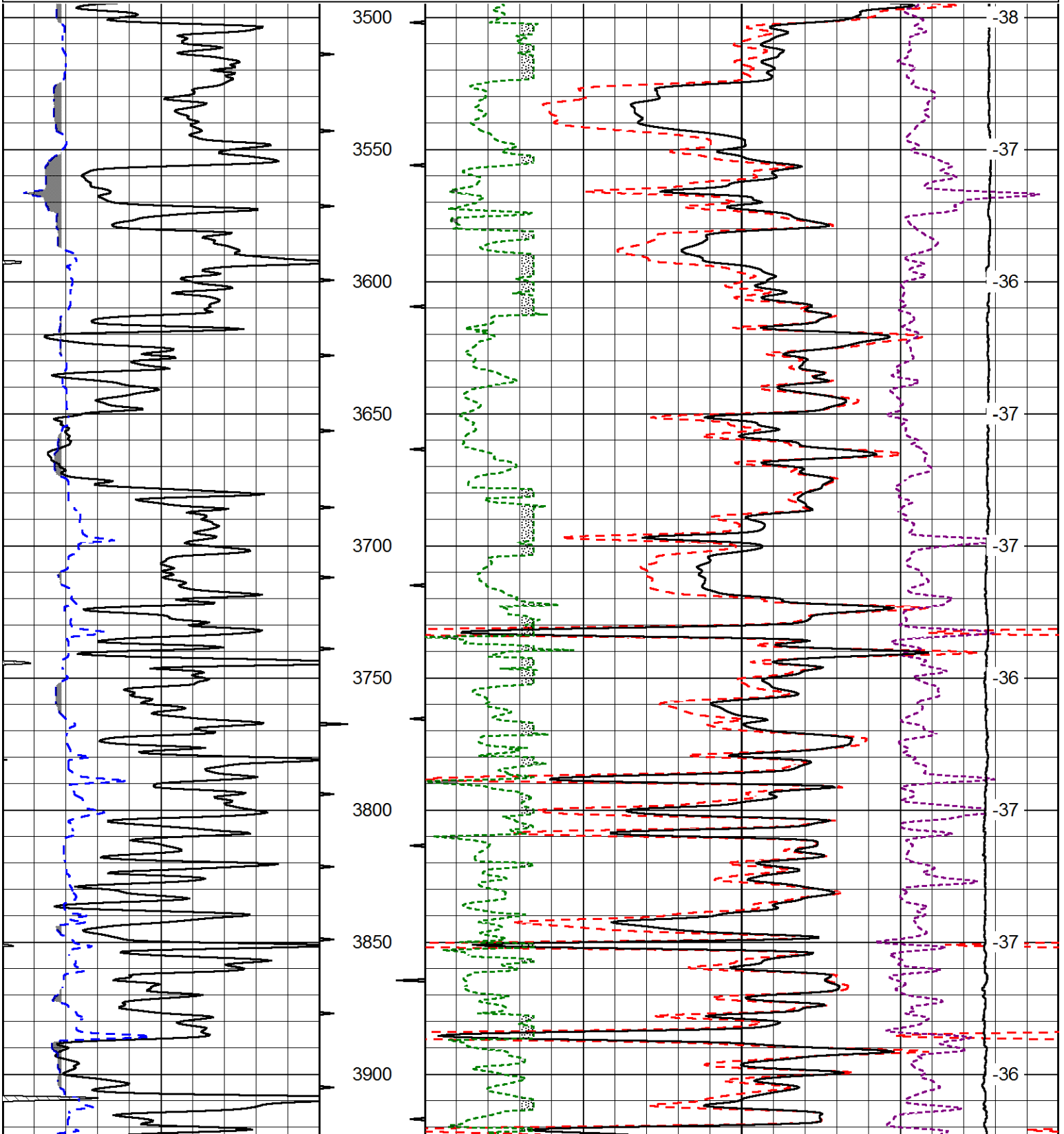
Your Pioneer Energy Services Crew	This Log Record Was Witnessed By
Engineer: J. HENRICKSON	Primary Witness: HARLEY SAYLES
Operator: J. LONG	Secondary Witness:
Operator:	Secondary Witness:
Operator:	Secondary Witness:

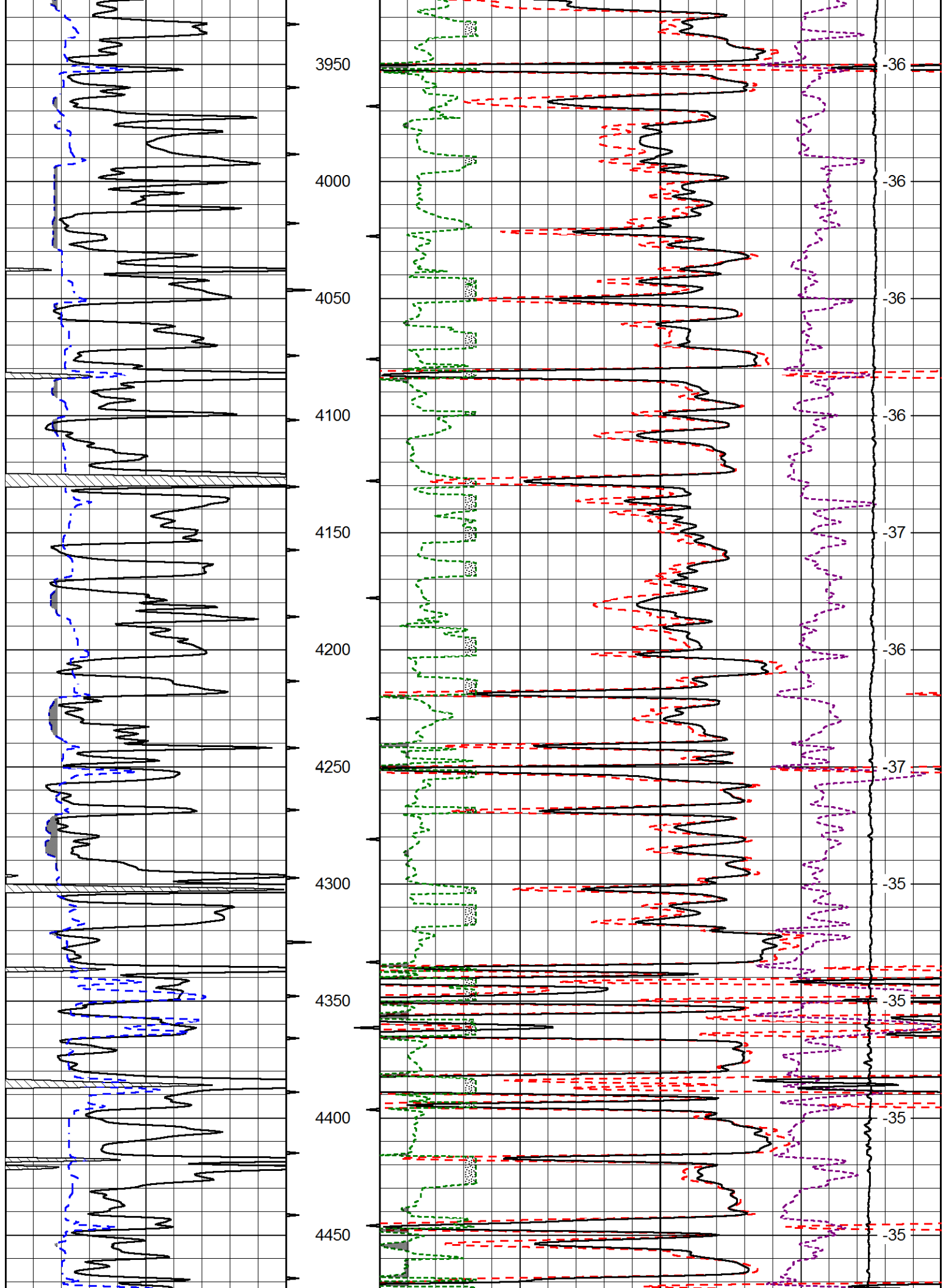
Database File val\_roberts\_1\_17hd.db  
 Dataset Pathname DIL/valstkml  
 Presentation Format cdl  
 Dataset Creation Wed Jan 13 21:40:48 2016  
 Charted by Depth in Feet scaled 1:600

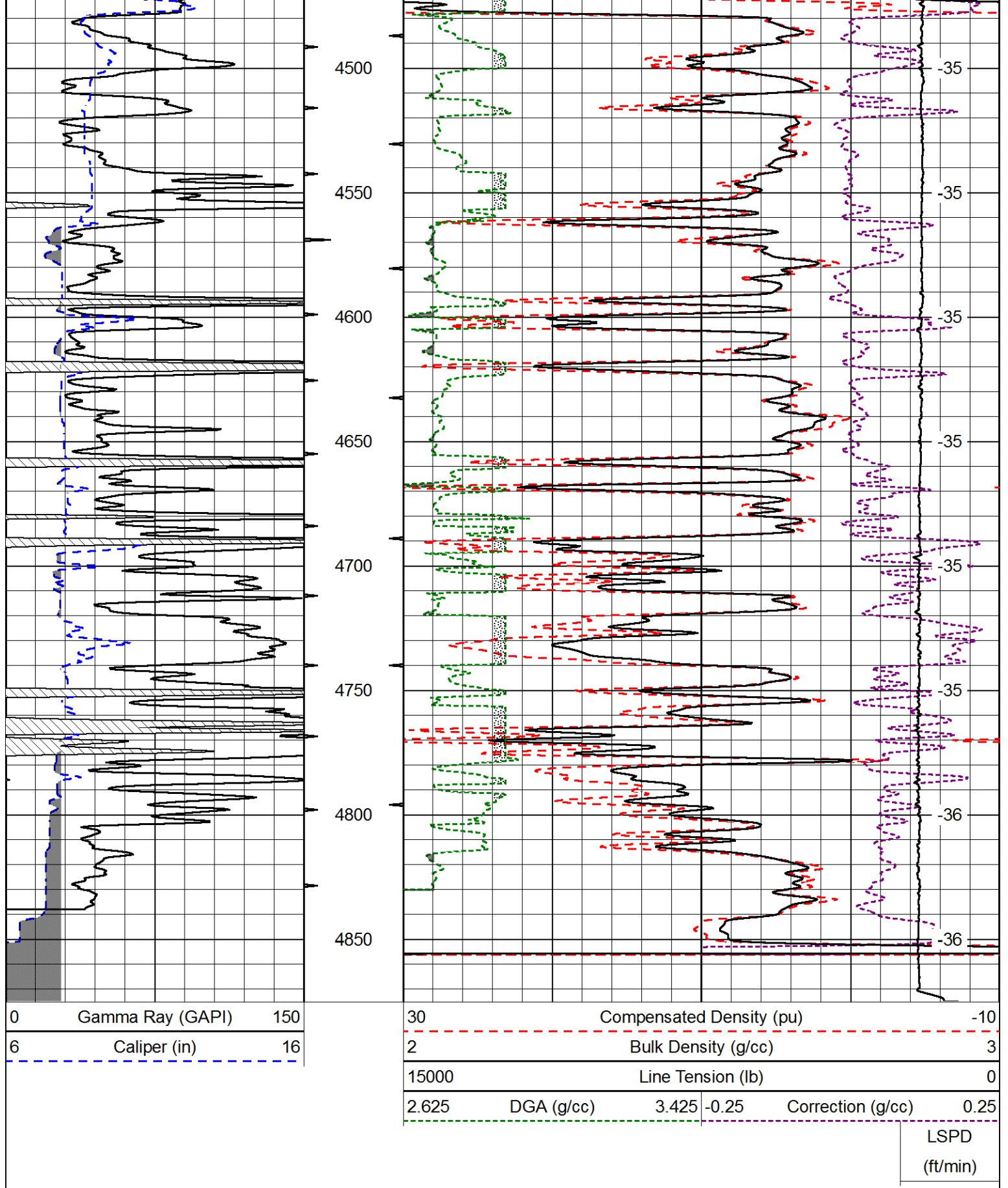
0	Gamma Ray (GAPI)	150
6	Caliper (in)	16

30	Compensated Density (pu)		-10
2	Bulk Density (g/cc)		3
15000	Line Tension (lb)		0
2.625	DGA (g/cc)	3.425	-0.25
	Correction (g/cc)		0.25

LSPD  
(ft/min)







Database File val\_roberts\_1\_17hd.db  
 Dataset Pathname DIL/valstkml  
 Presentation Format cndlspec  
 Dataset Creation Wed Jan 13 21:40:48 2016  
 Charted by Depth in Feet scaled 1:240



6 Caliper (in) 16

30 Compensated Density (2.71 ma) (pu) -10  
 10000 Line Tension (lb) 0  
 2.625 DGA (g/cc) 3.425 -0.25 Correction (g/cc) 0.25

LSPD  
(ft/min)

