



MICRORESISTIVITY LOG

Company VAL ENERGY, INC.
Well ROBERT NO. 1-17
Field UNKNOWN
County THOMAS **State** KANSAS

Company VAL ENERGY, INC.
Well ROBERT NO. 1-17
Field UNKNOWN
County THOMAS
State KANSAS

Location: API #: 15-193-20962-00-00
 NW-NE-SE-SW
 1188' FSL & 2305' FWL
 SEC 17 TWP 8S RGE 35W
Permanent Datum GROUND LEVEL Elevation 3333'
Log Measured From KELLY BUSHING
Drilling Measured From KELLY BUSHING

Other Services
 CNL/CDL
 DIL

Elevation
 K.B. 3338'
 D.F. N/A
 G.L. 3333'

Date	1/13/16
Run Number	ONE
Depth Driller	4870'
Depth Logger	4871'
Bottom Logged Interval	4870'
Top Log Interval	3500'
Casing Driller	8.625" @ 259'
Casing Logger	260'
Bit Size	7.875"
Type Fluid in Hole	CHEMICAL
Salinity, ppm CL	9,000
Density / Viscosity	8.9 58
pH / Fluid Loss	10.0 10.4
Source of Sample	Flowline
Rm @ Meas. Temp	.35 @ 62
Rmt @ Meas. Temp	.26 @ 62
Rmc @ Meas. Temp	.47 @ 62
Source of Rmf / Rmc	Charts
Rm @ BHT	.17 @ 125
Operating Rig Time	3 HOURS
Max Rec. Temp. F	125 DEGF
Equipment Number	108
Location	Hays
Recorded By	J. HENRICKSON
Witnessed By	HARLEY SAYLES

<<< Fold Here >>>

All interpretations are opinions based on inferences from electrical or other measurements and Pioneer Wireline Services, LLC cannot and does not guarantee the accuracy or correctness of any interpretation, and Pioneer Wireline Services, LLC will not be liable or responsible for any loss, costs, damages, or expenses incurred or sustained by anyone resulting from any interpretation made by any of our officers, agents or employees.

Comments

N/A DENOTES NOT AVAILABLE OR NON-APPLICABLE.

LEVANT EXIT ON I70
1 SOUTH, 2 1/2 WEST, NORTH INTO

Log Measured From: KELLY BUSHING 5 Ft. Above Permanent Datum

THANK YOU FOR USING PIONEER ENERGY SERVICES
www.pioneerenergy.com 785-625-3858

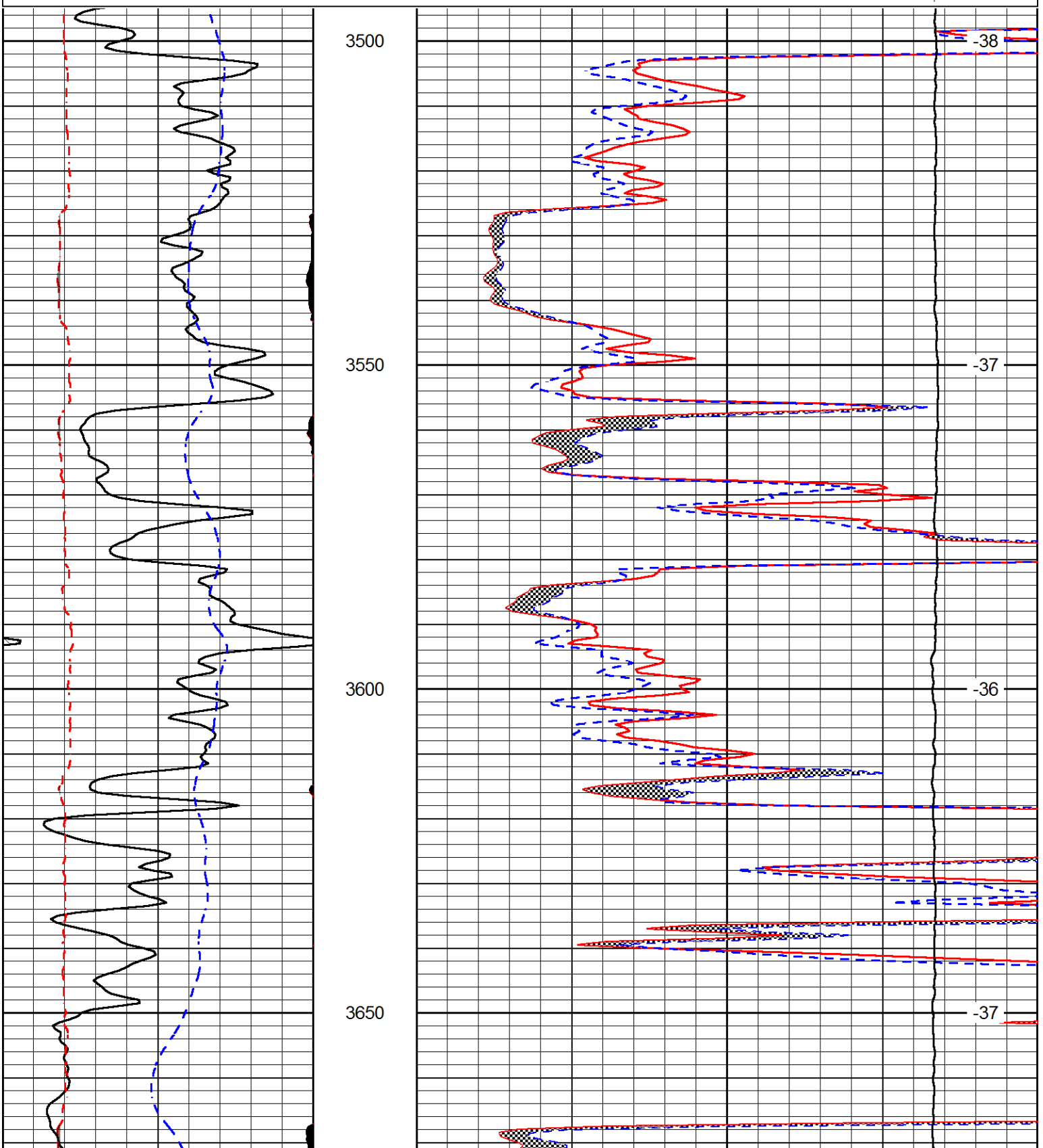
Your Pioneer Energy Services Crew Engineer: J. HENRICKSON Operator: J. LONG Operator: Operator:	This Log Record Was Witnessed By Primary Witness: HARLEY SAYLES Secondary Witness: Secondary Witness: Secondary Witness:
--	---

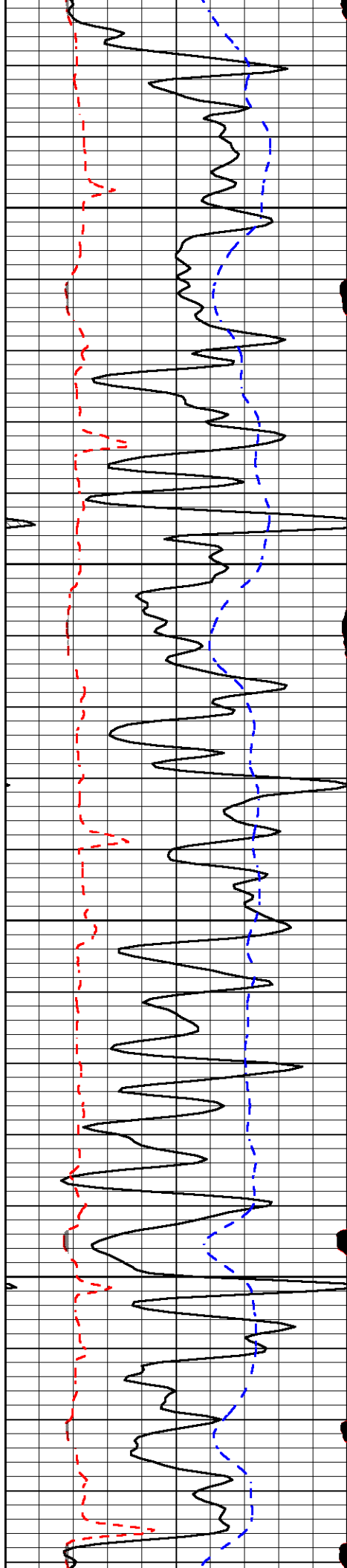
Database File val_roberts_1_17hd.db
 Dataset Pathname DIL/valstkml
 Presentation Format micro
 Dataset Creation Wed Jan 13 21:40:48 2016
 Charted by Depth in Feet scaled 1:240

0	Gamma Ray (GAPI)	150
6	MCAL (in)	16
2.875	Mud Cake (in)	7.875
-200	SP (mV)	0

0	Micro Inverse 1 X 1 (Ohm-m)	40
0	Micro Normal 2" (Ohm-m)	40
10000	Line Weight (lb)	0

LSPD
(ft/min)



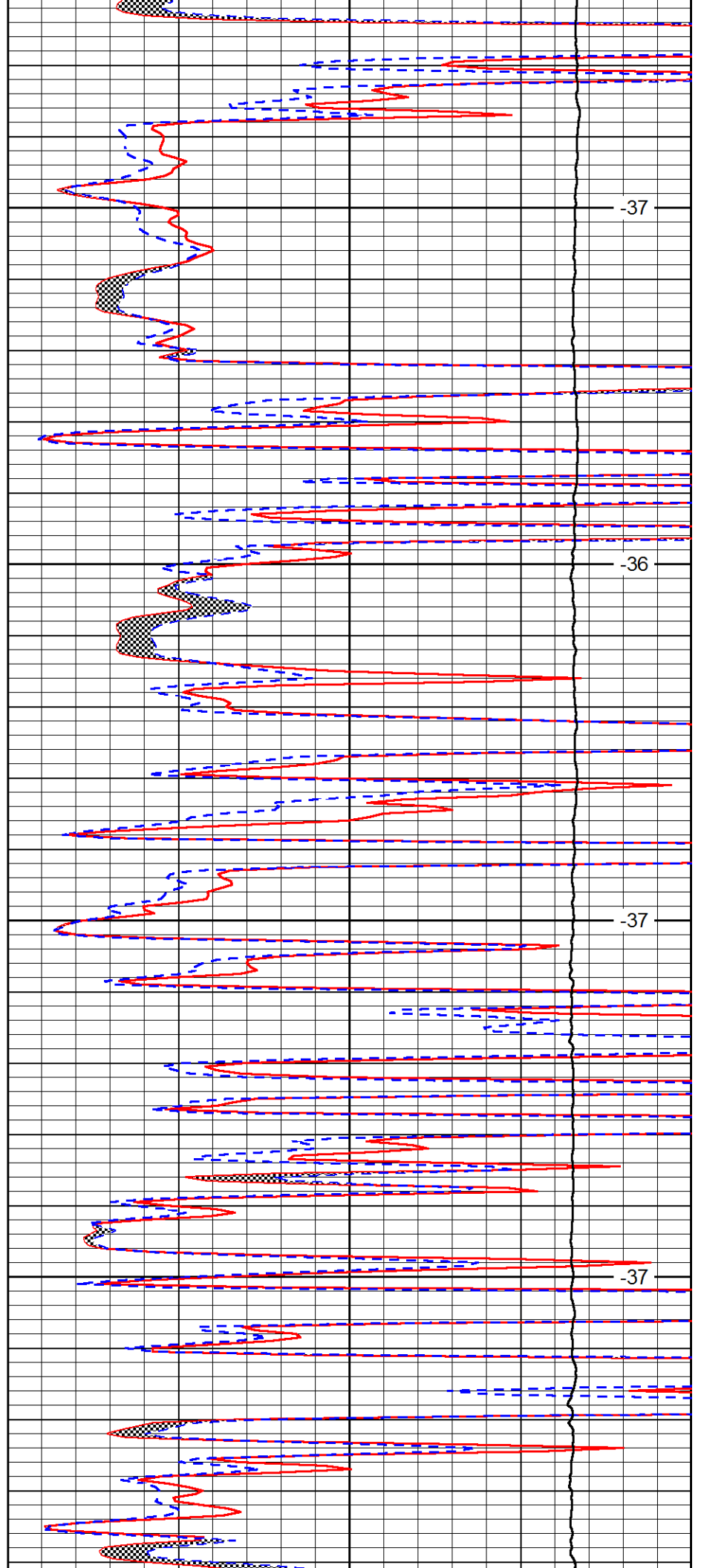


3700

3750

3800

3850

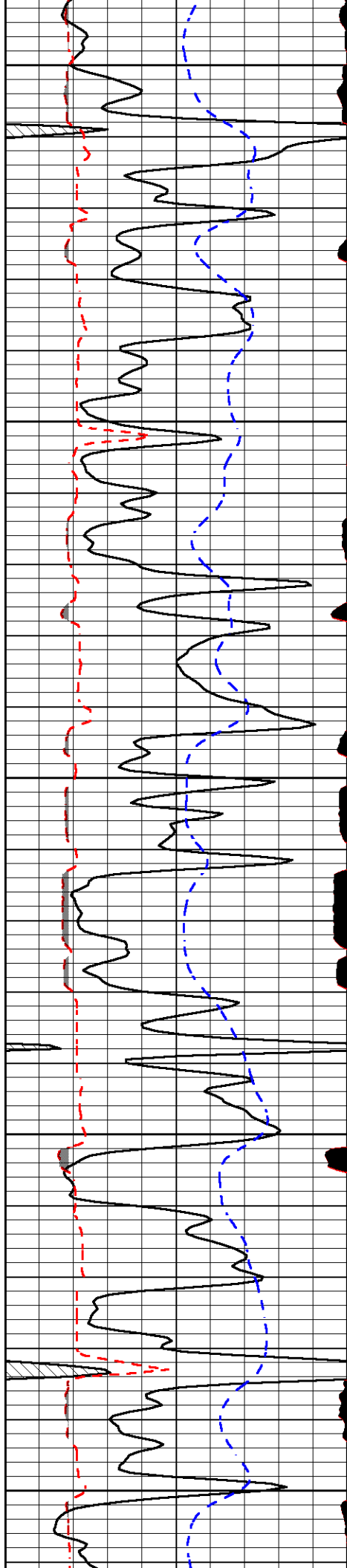


-37

-36

-37

-37



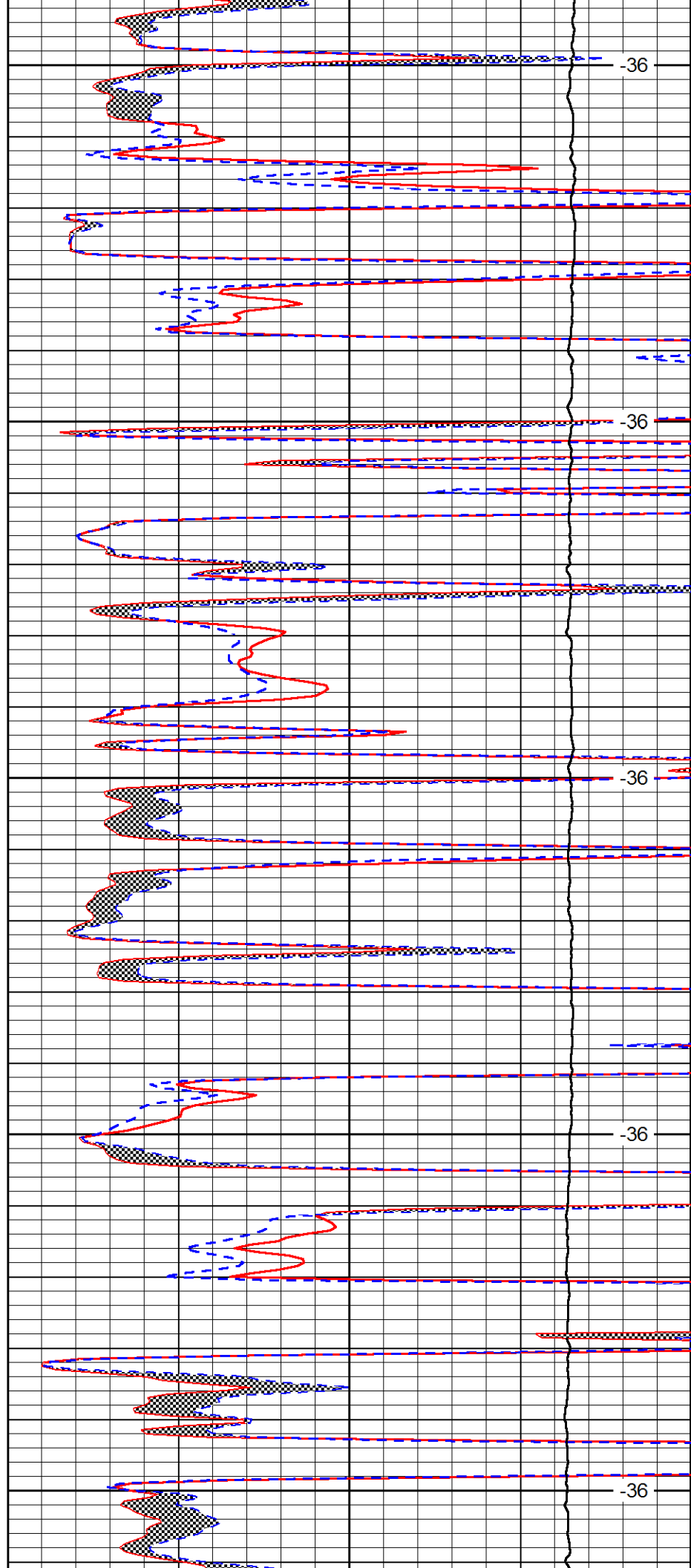
3900

3950

4000

4050

4100



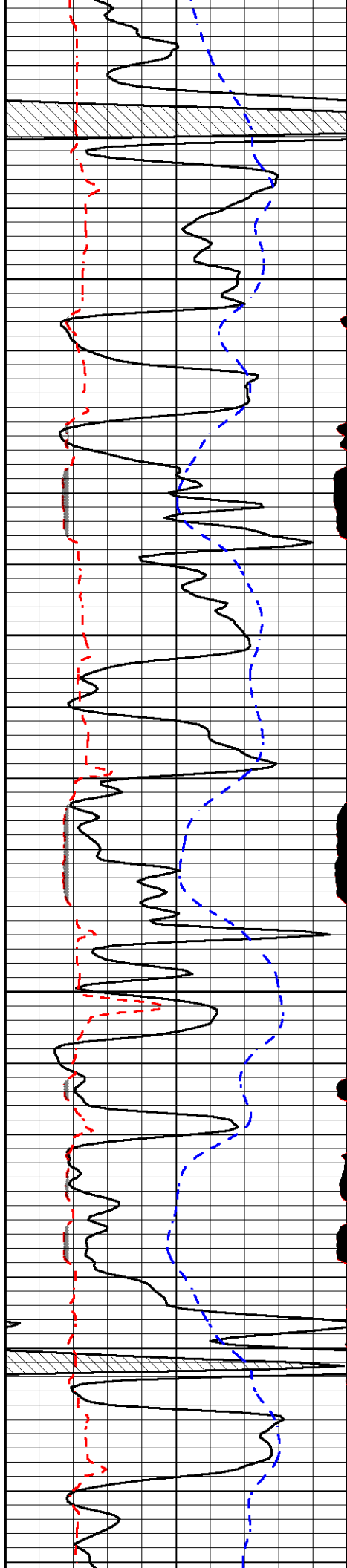
-36

-36

-36

-36

-36

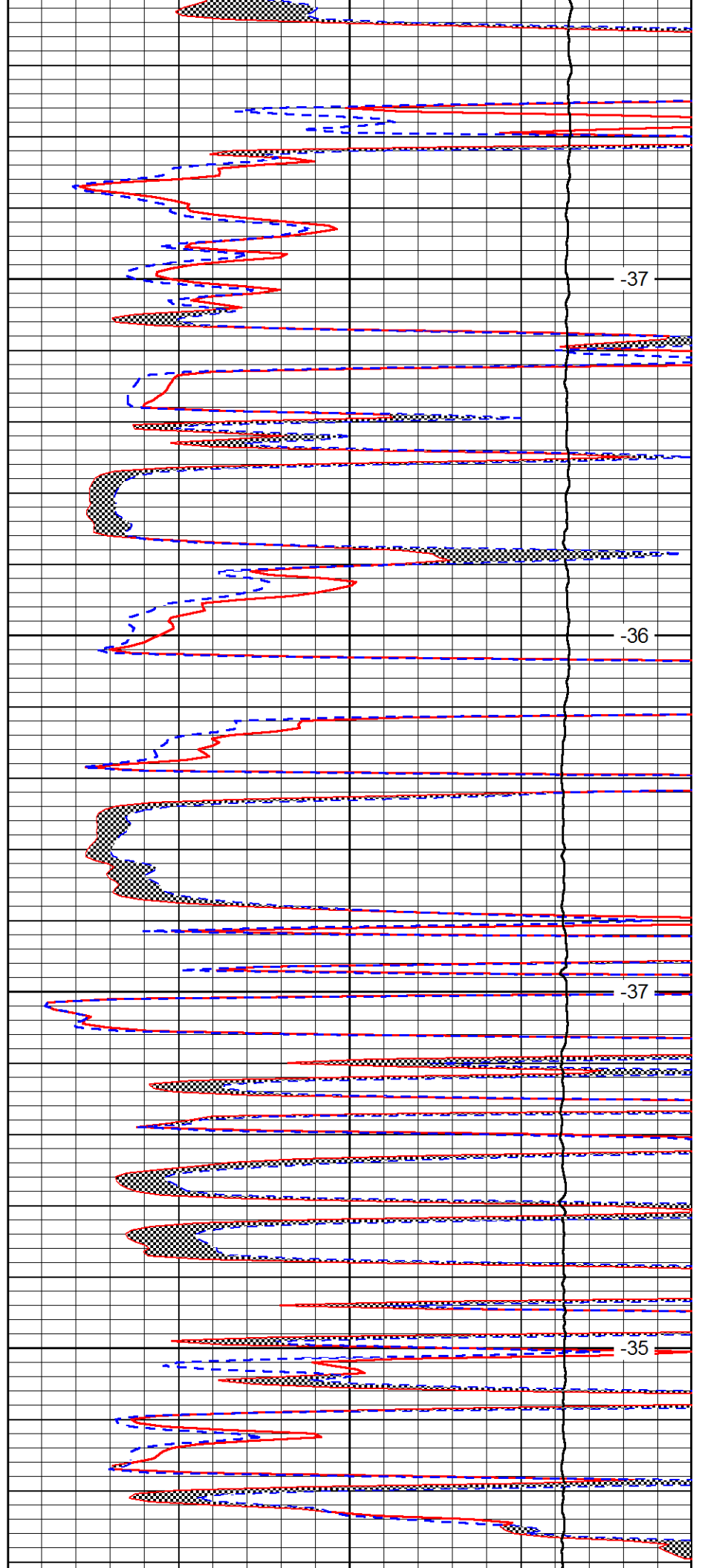


4150

4200

4250

4300

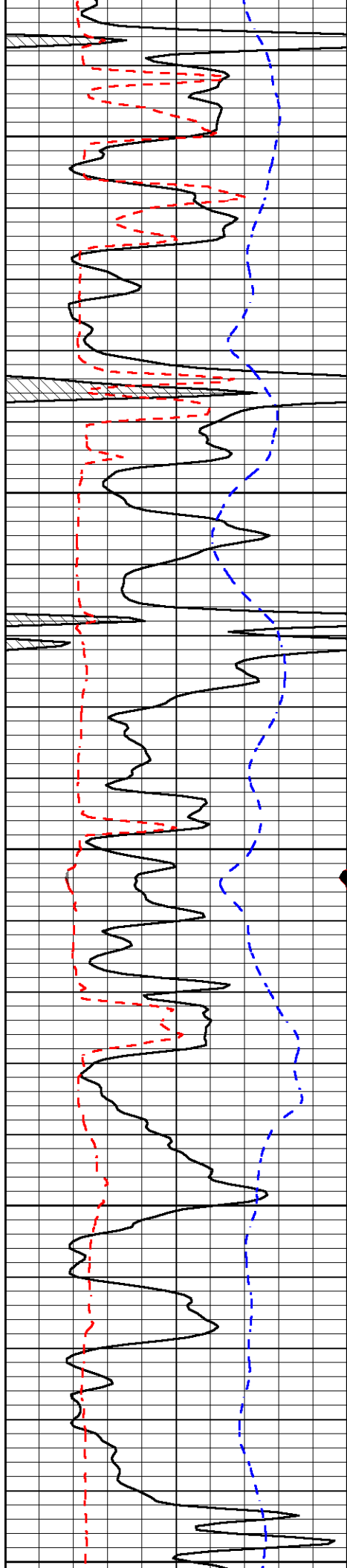


-37

-36

-37

-35



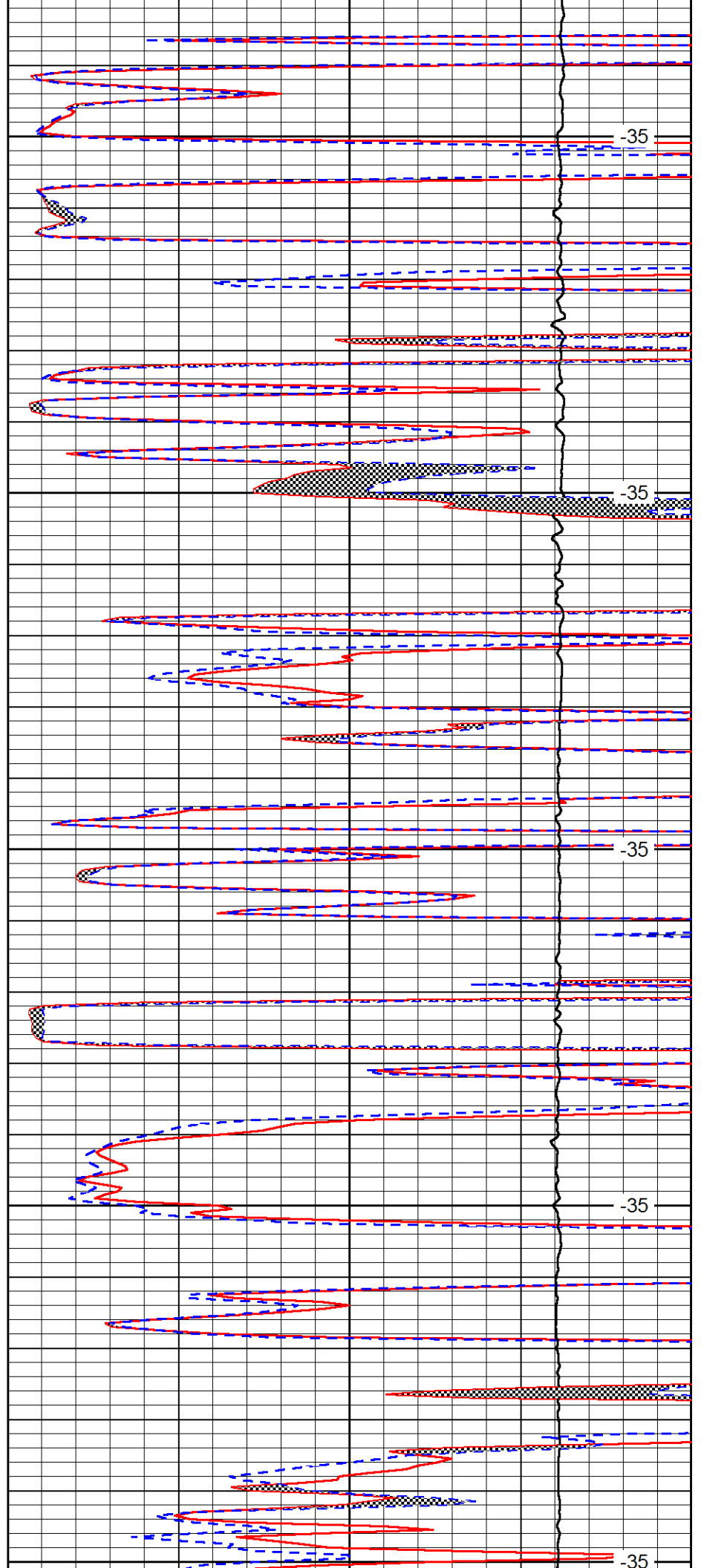
4350

4400

4450

4500

4550



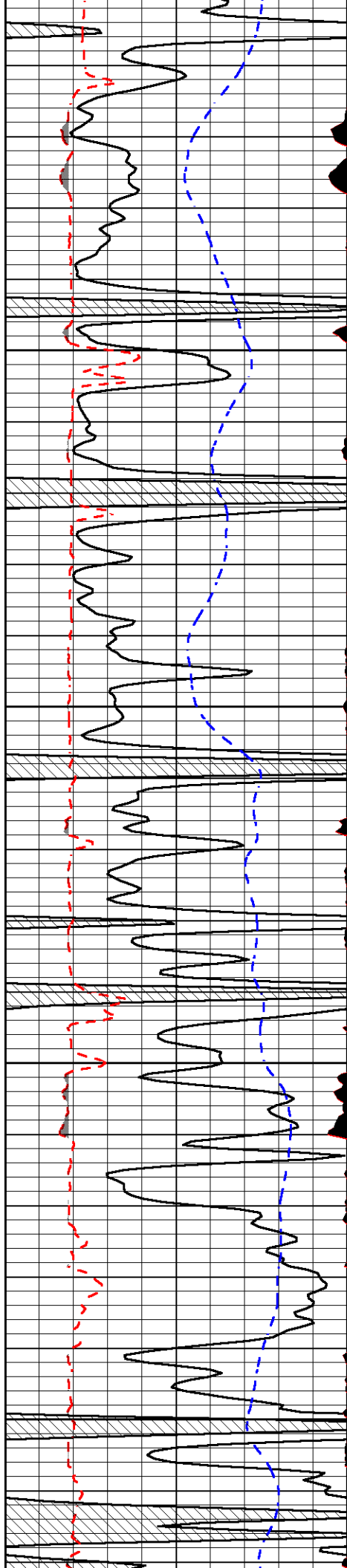
-35

-35

-35

-35

-35

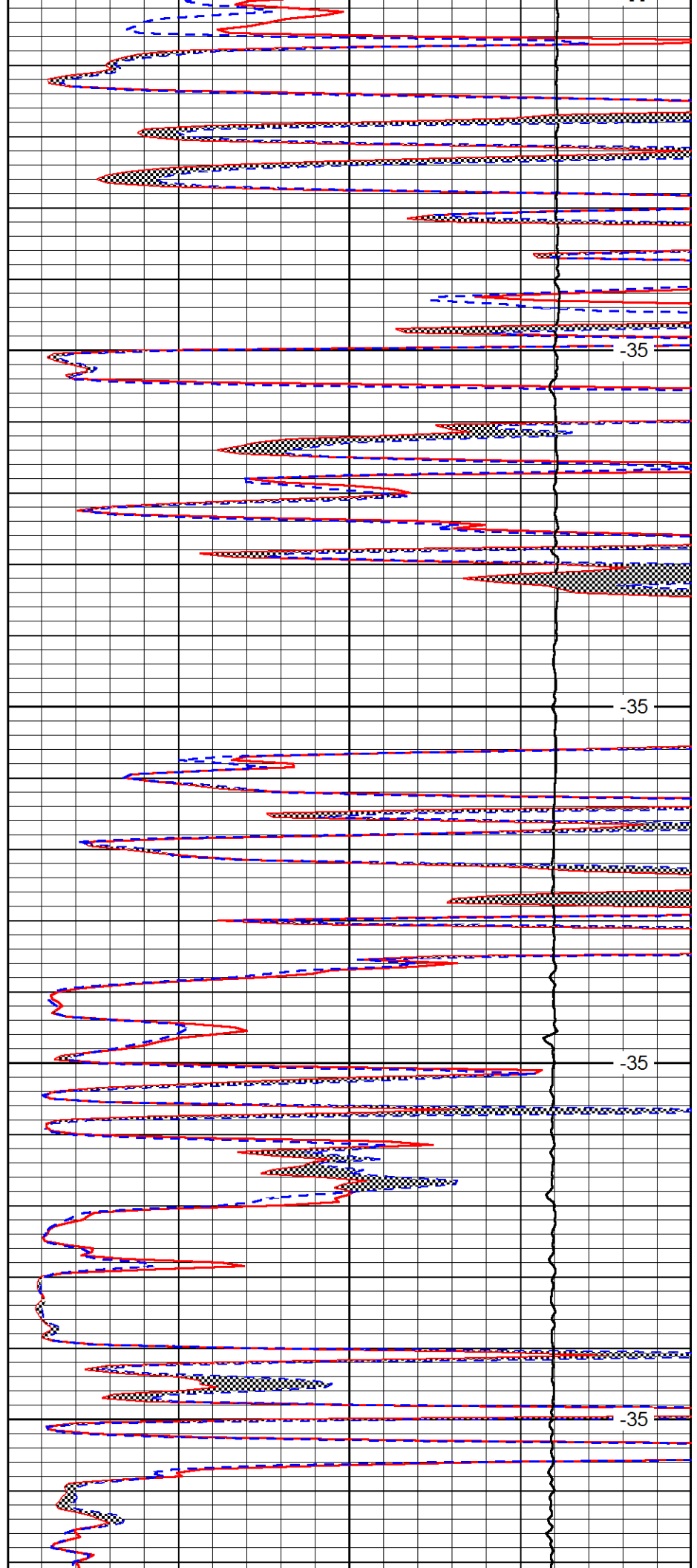


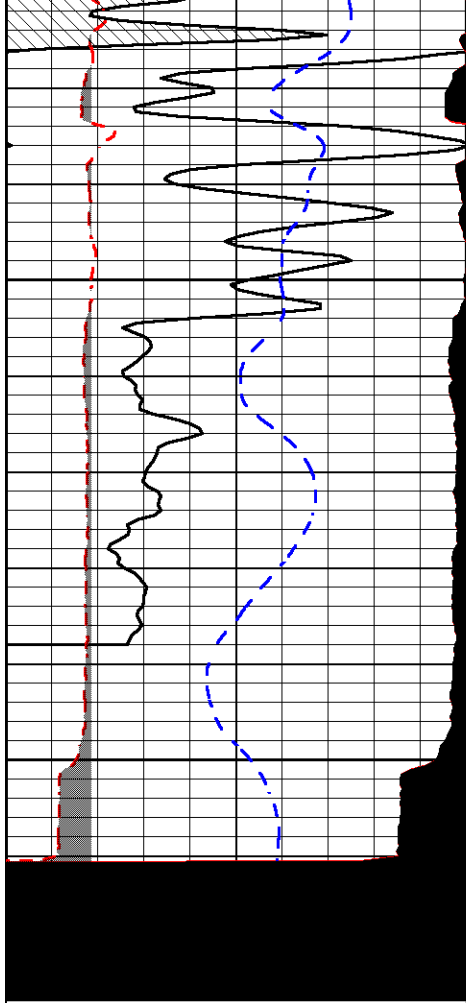
4600

4650

4700

4750

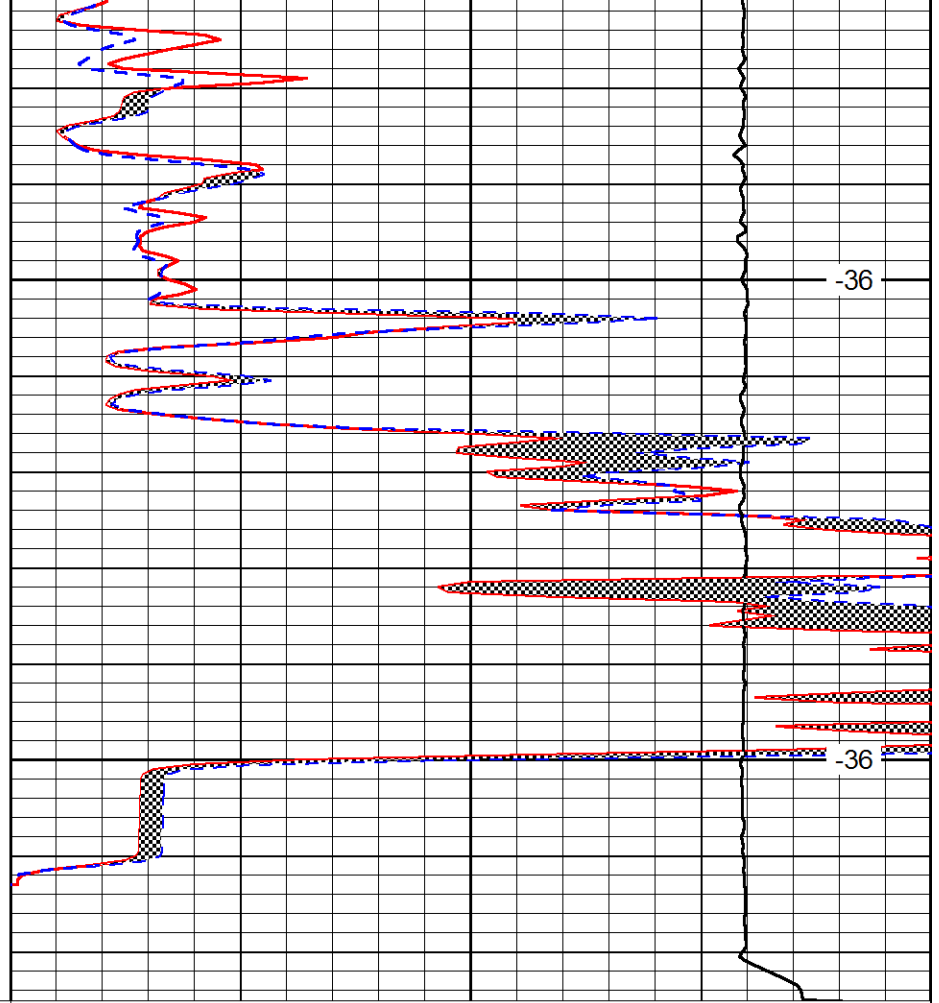




4800

4850

0	Gamma Ray (GAPI)	150
6	MCAL (in)	16
2.875	Mud Cake (in)	7.875
-200	SP (mV)	0



-36

-36

0	Micro Inverse 1 X 1 (Ohm-m)	40
0	Micro Normal 2" (Ohm-m)	40
10000	Line Weight (lb)	0

LSPD
(ft/min)