



Pioneer Energy Services

Dual Induction Log

API No.	15-193-20,938-00-00	
Company	Val Energy, Inc.	
Well	Otto No. 1-26	
Field		
County	Thomas	State
		Kansas
Location	1063' FNL & 1513' FWL	
Sec: 21	Twp: 8s	Rge: 35w
Permanent Datum	Ground Level	Elevation 3306
Log Measured From	Kelly Bushing	10 Ft. Above Perm. Datum
Drilling Measured From	Kelly Bushing	
		Other Services CNL/CDL MEL/BHCS
		Elevation K.B. 3316 D.F. G.L. 3306

Date	12/3/2014
Run Number	One
Depth Driller	4917
Depth Logger	4923
Bottom Logged Interval	4922
Top Log Interval	250
Casing Driller	8.625 @ 256
Casing Logger	254
Bit Size	7.875
Type Fluid in Hole	Chemical
Salinity, ppm CL	7000
Density / Viscosity	9.4 56
pH / Fluid Loss	10.0 8.8
Source of Sample	Flowline
Rm @ Meas. Temp	.28 @ 58
Rmf @ Meas. Temp	.21 @ 58
Rmc @ Meas. Temp	.38 @ 58
Source of Rmf / Rmc	Charts
Rm @ BHT	.13 @ 125
Operating Rig Time	5 Hours
Max Rec. Temp. F	125
Equipment Number	108
Location	Hays
Recorded By	D. Fischer
Witnessed By	John Goldsmith

<<< Fold Here >>>

All interpretations are opinions based on inferences from electrical or other measurements and we cannot and do not guarantee the accuracy or correctness of any interpretation, and we shall not, except in the case of gross or willful negligence on our part, be liable or responsible for any loss, costs, damages, or expenses incurred or sustained by anyone resulting from any interpretation made by any of our officers, agents or employees. These interpretations are also subject to our general terms and conditions set out in our current Price Schedule.

Comments

Thank you for using Log-Tech, Inc.
(785) 625-3858

Levant I-70 Exit, 1/2 North, 4 West to 9 rd., 1 1/2 South, East Into.

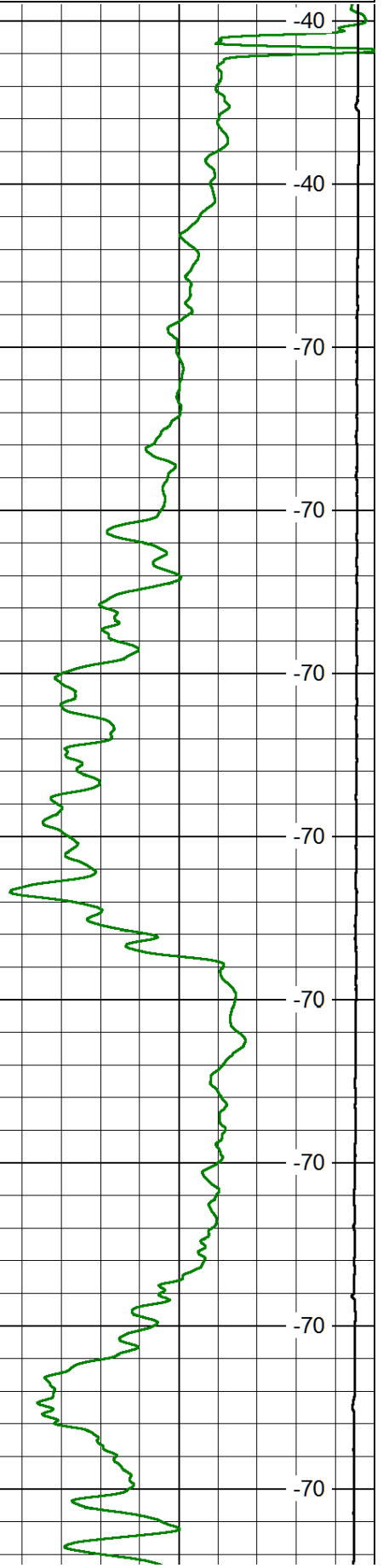
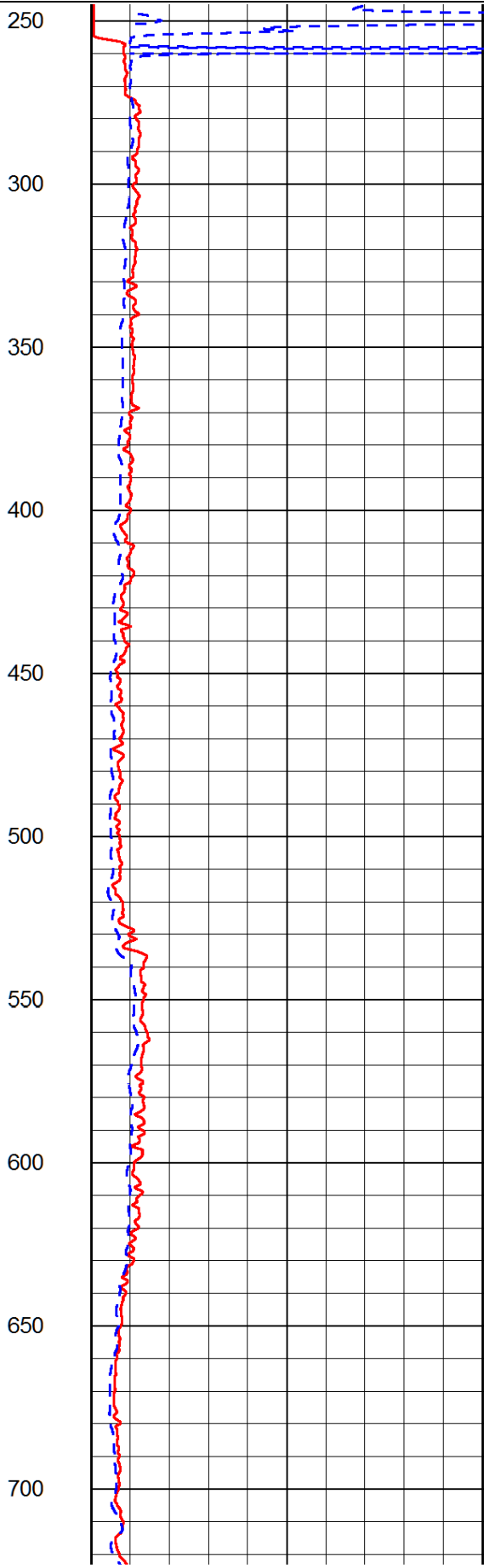
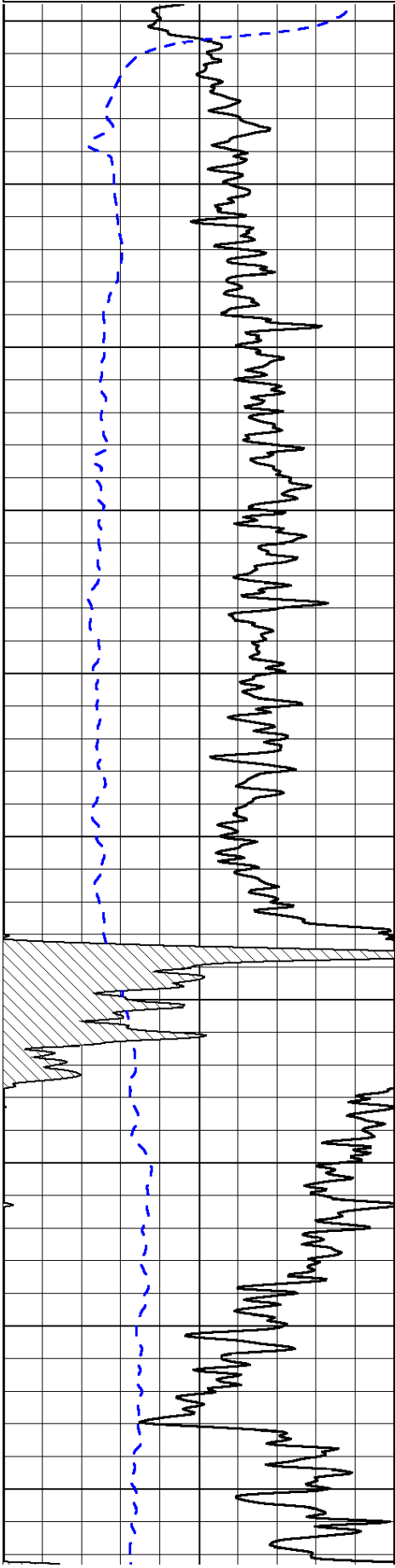
Database File: val_otto_1-21hd.db
 Dataset Pathname: DIL/valstck
 Presentation Format: dil2in
 Dataset Creation: Wed Dec 03 11:00:23 2014
 Charted by: Depth in Feet scaled 1:600

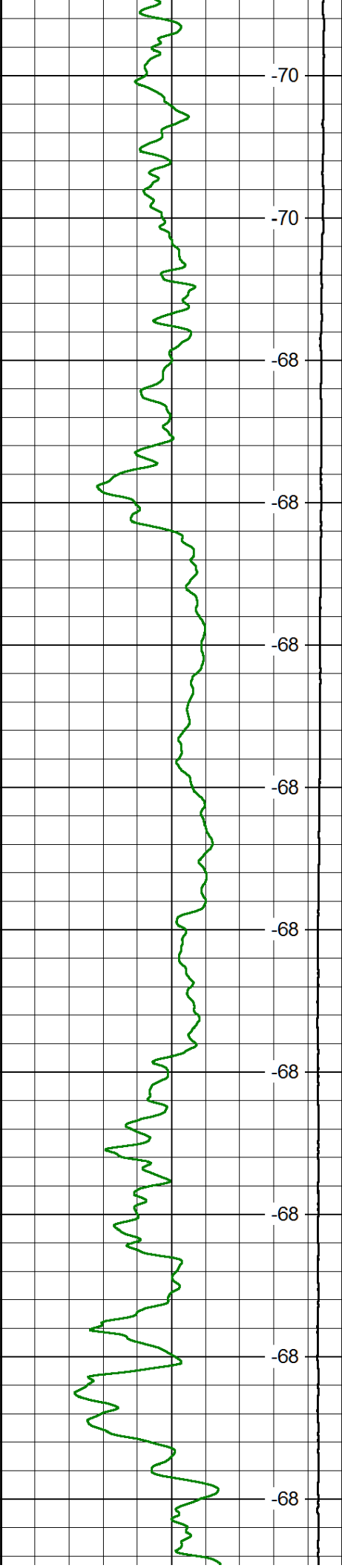
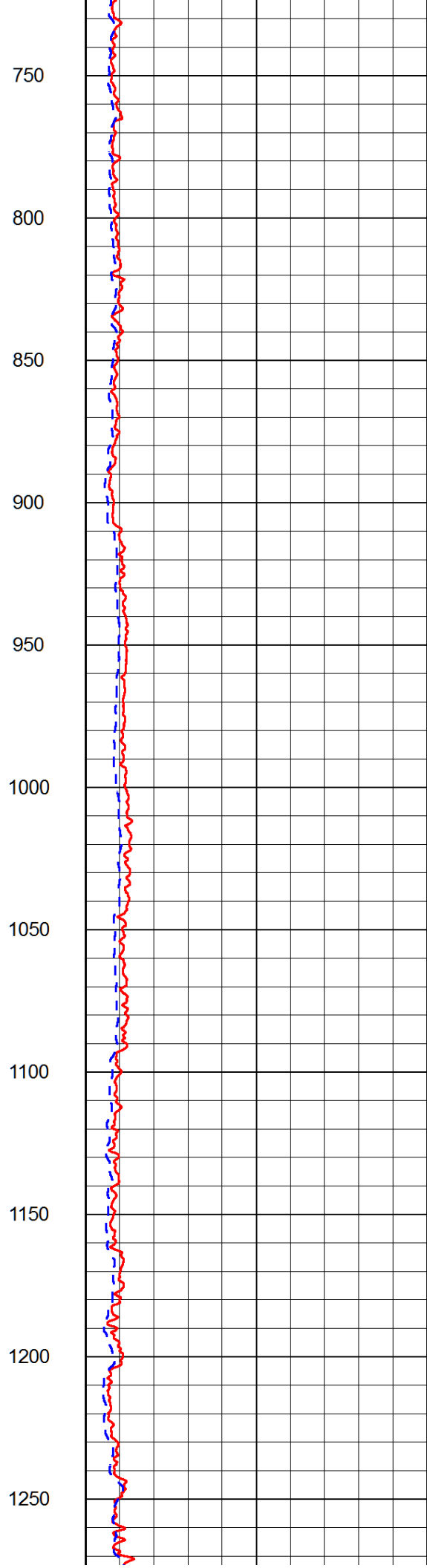
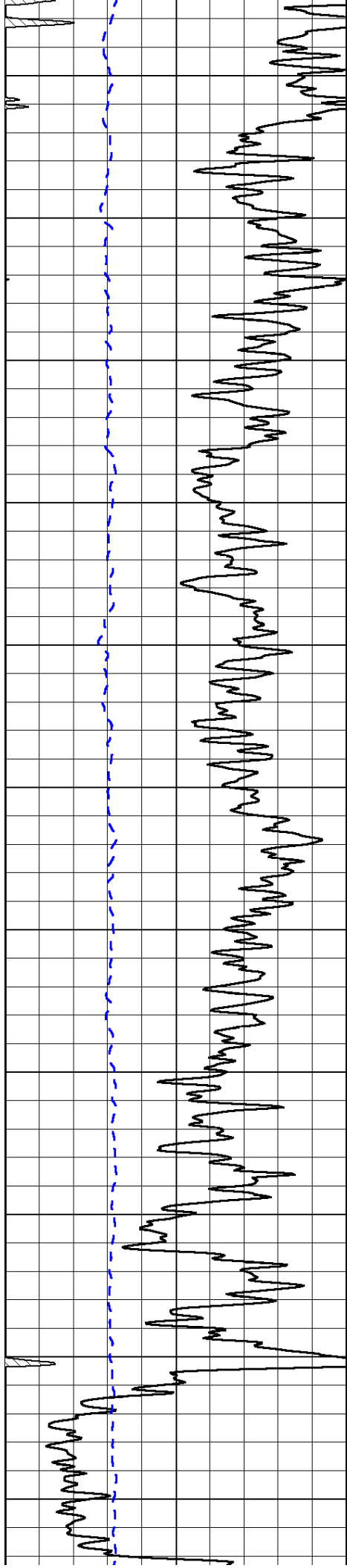
0	Gamma Ray	150
-200	SP (mV)	0

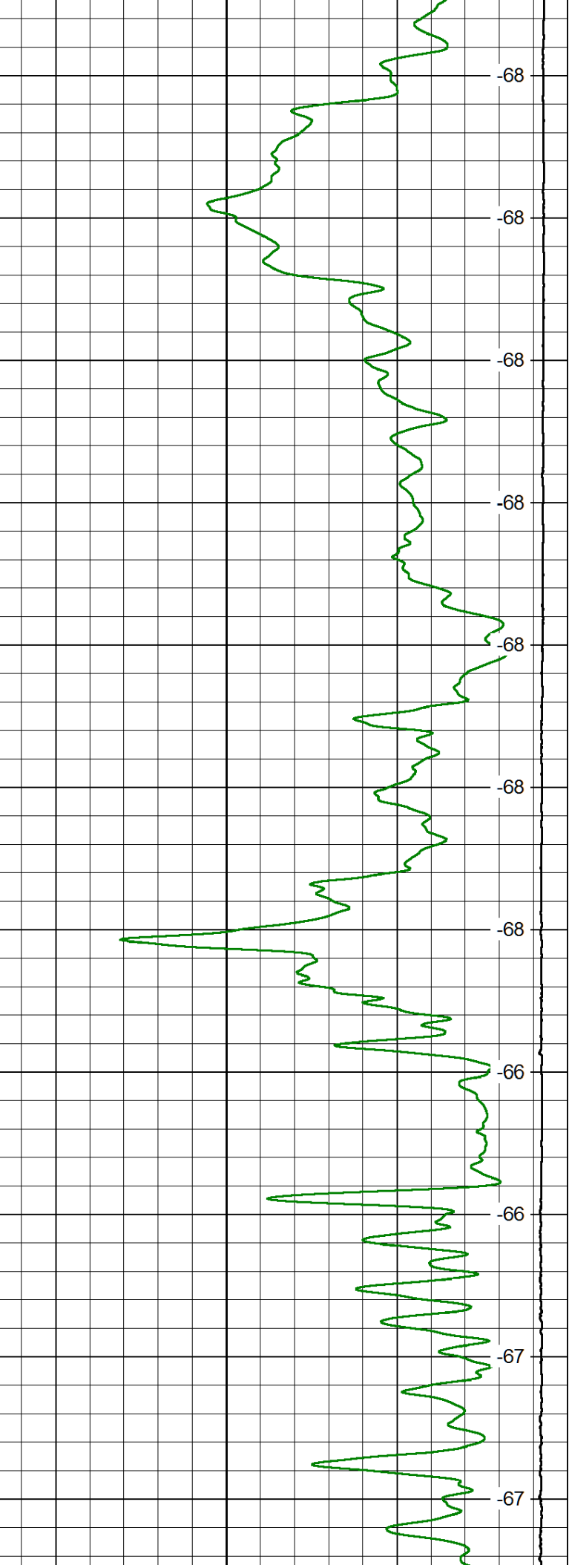
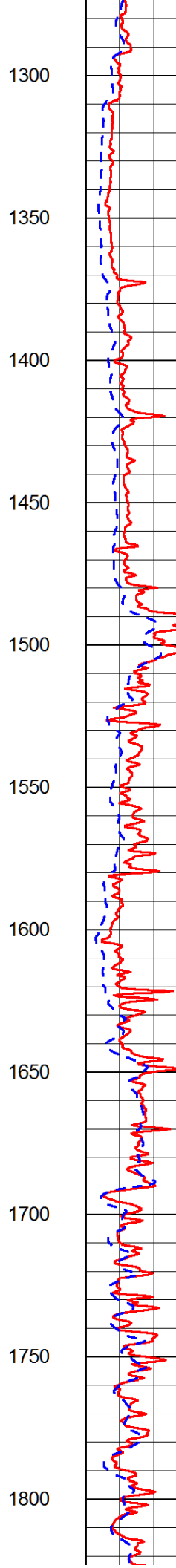
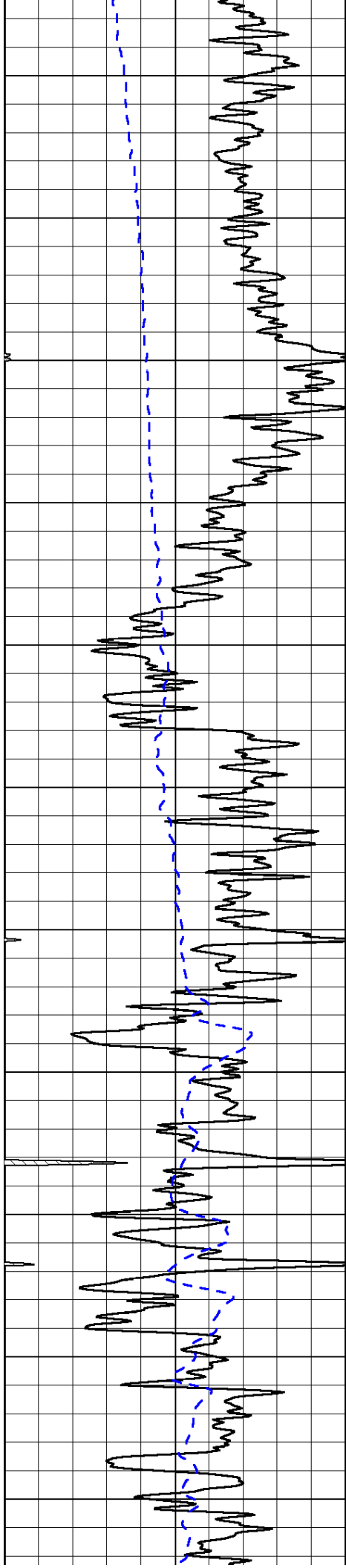
0	Shallow Resistivity	50
0	Deep Resistivity	50
1000	Conductivity	0
15000	Line Tension	0

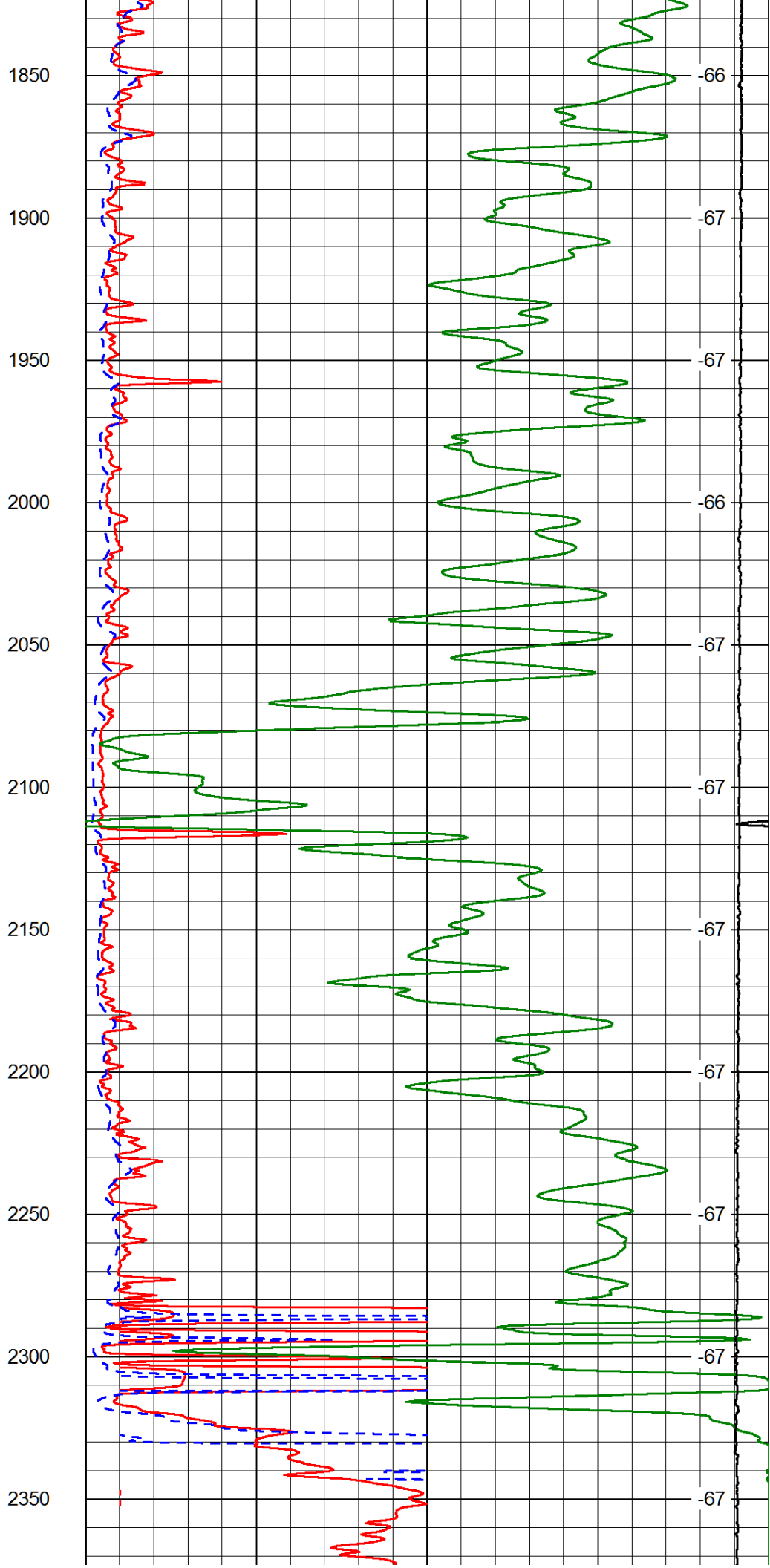
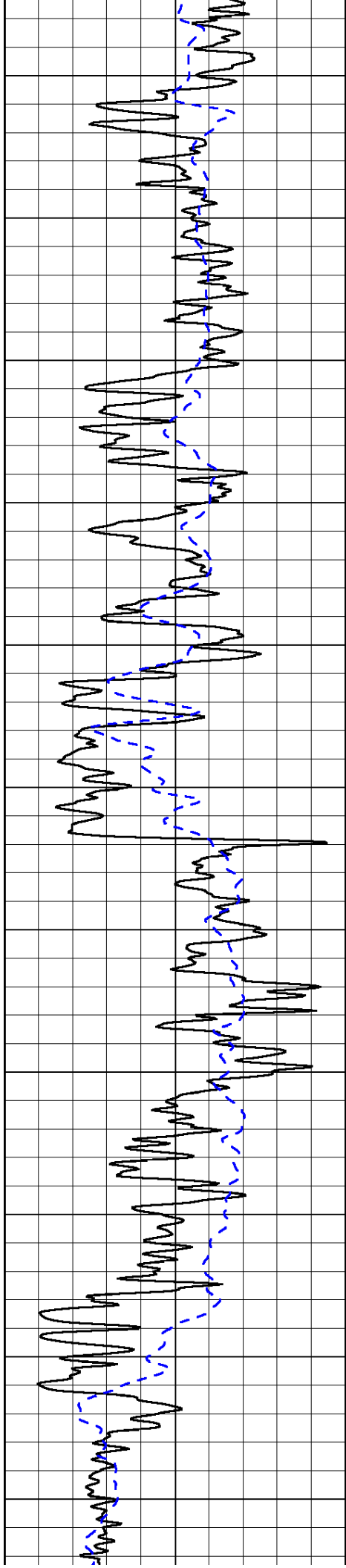
LSPD

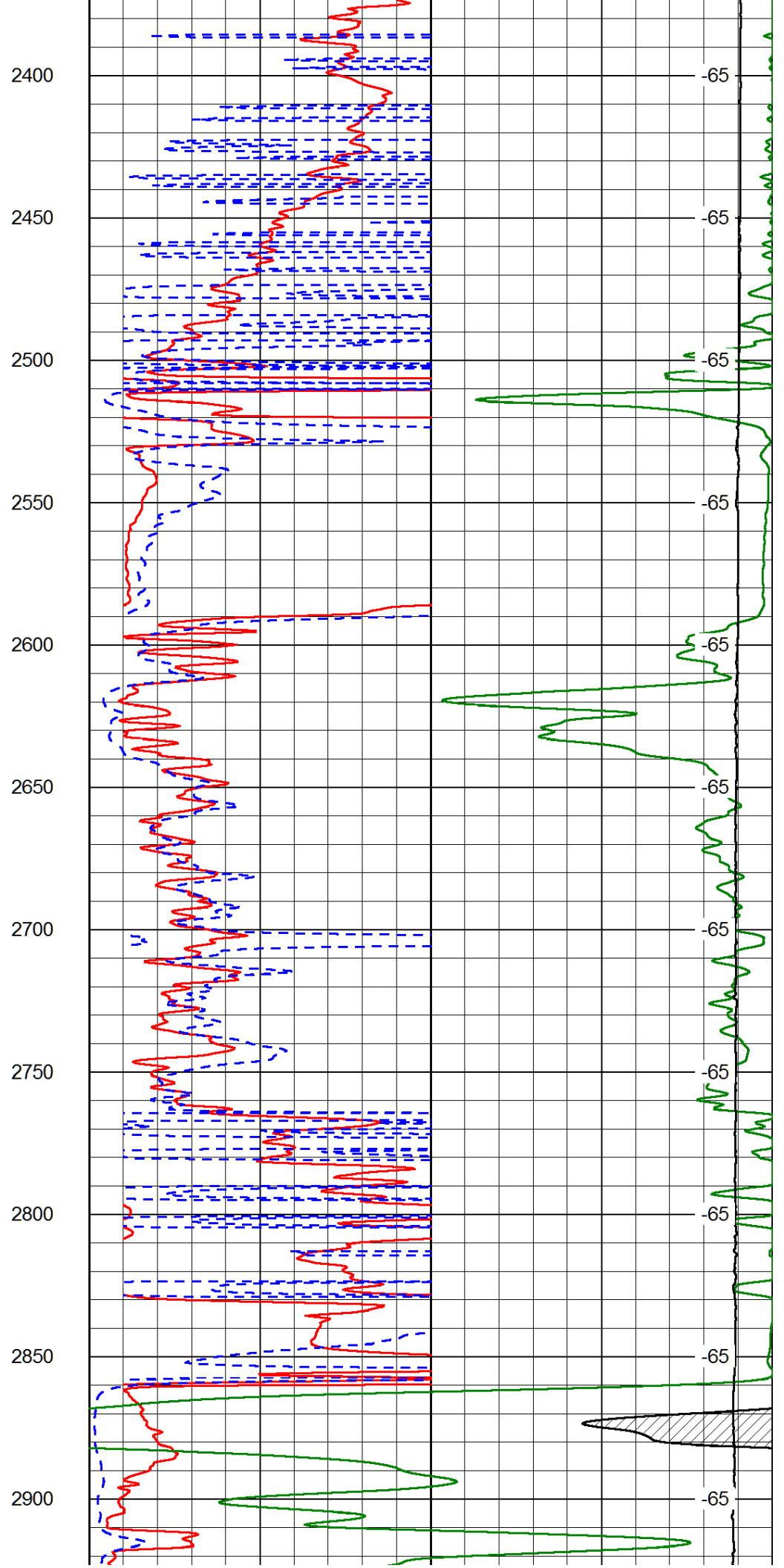
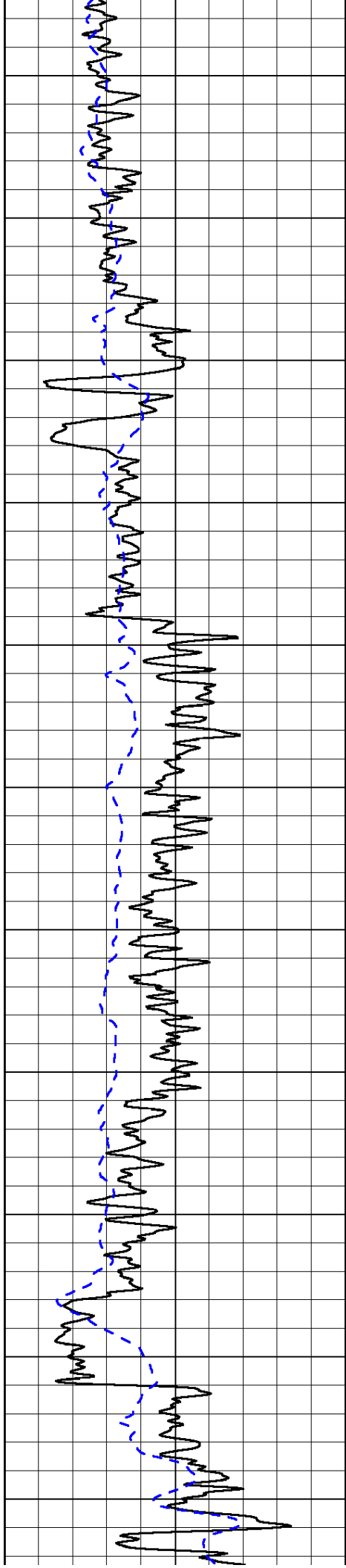
50	Shallow Resistivity	500
50	Deep Resistivity	500

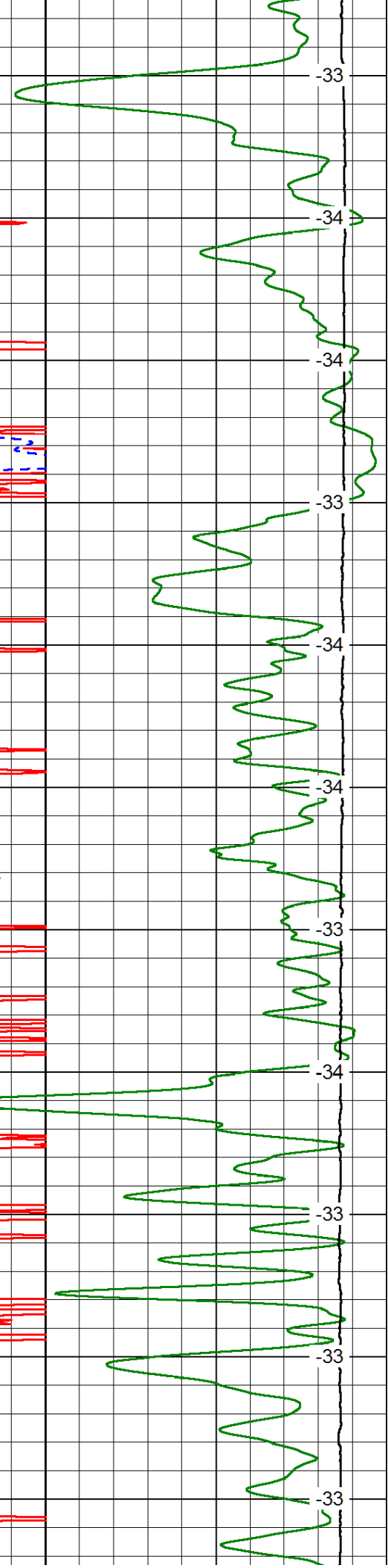
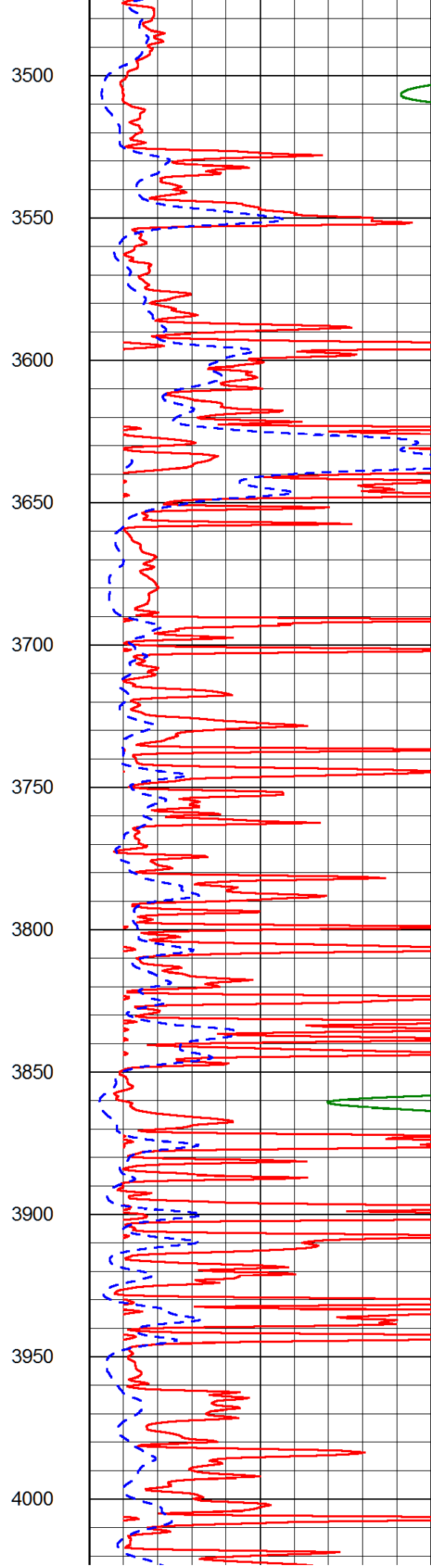
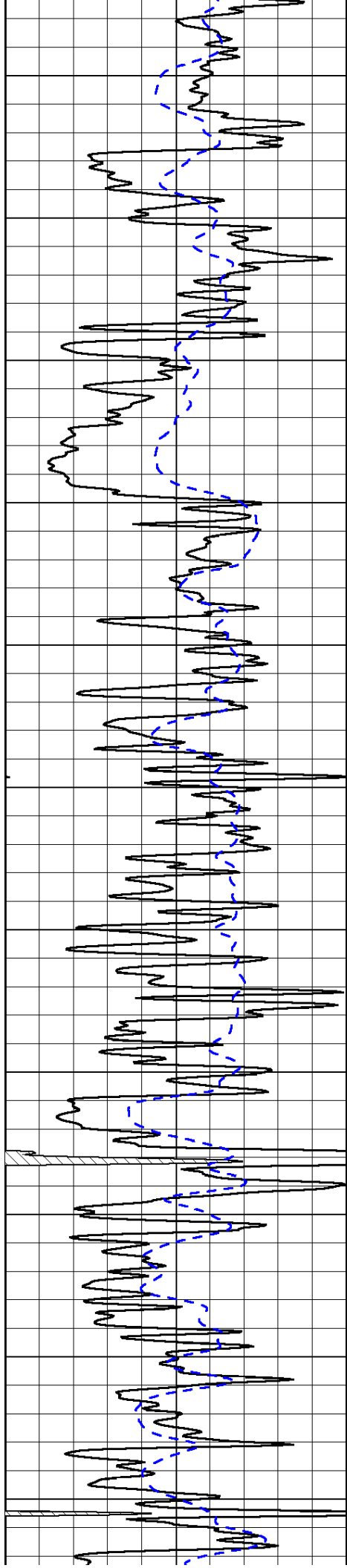


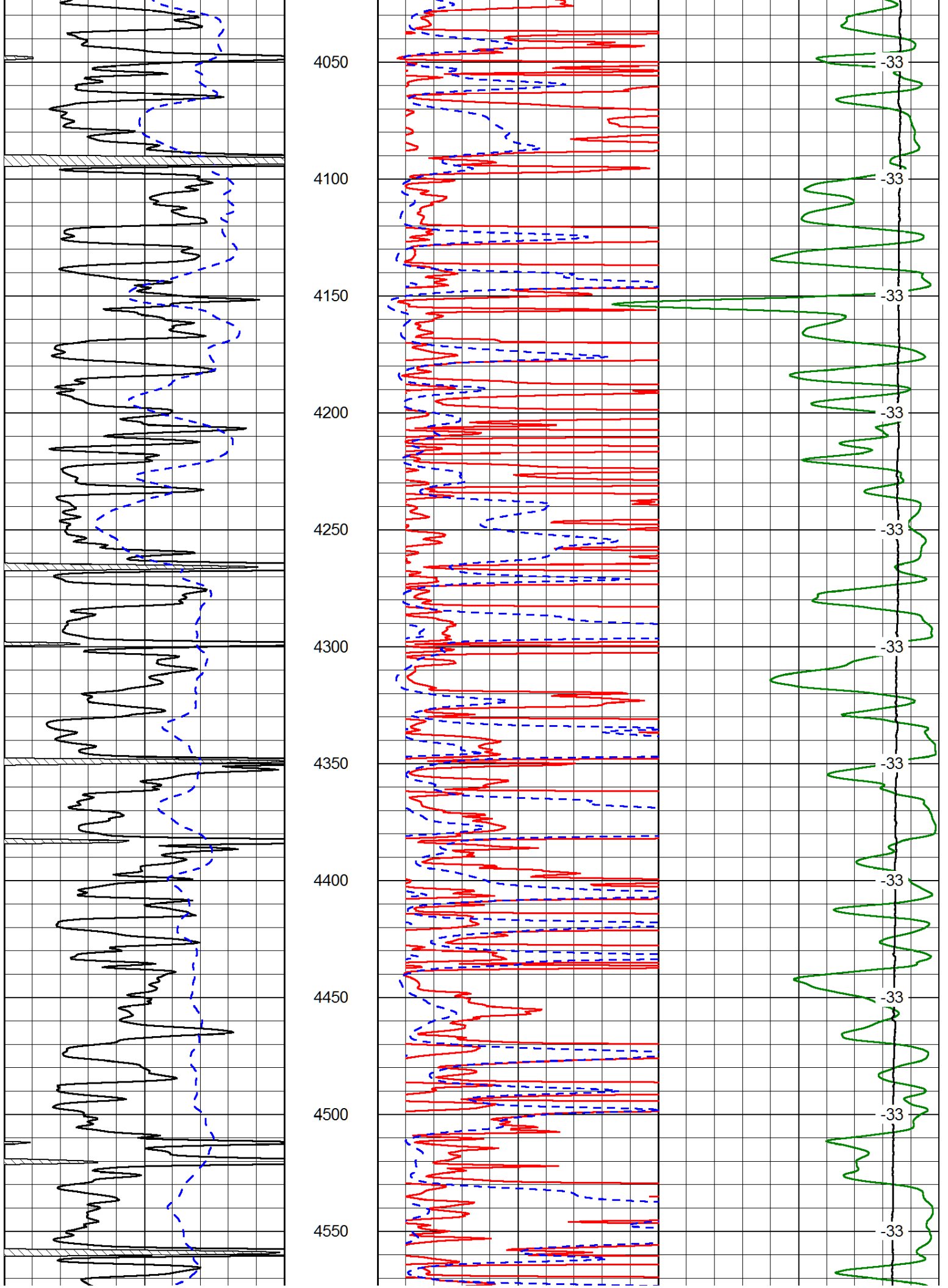


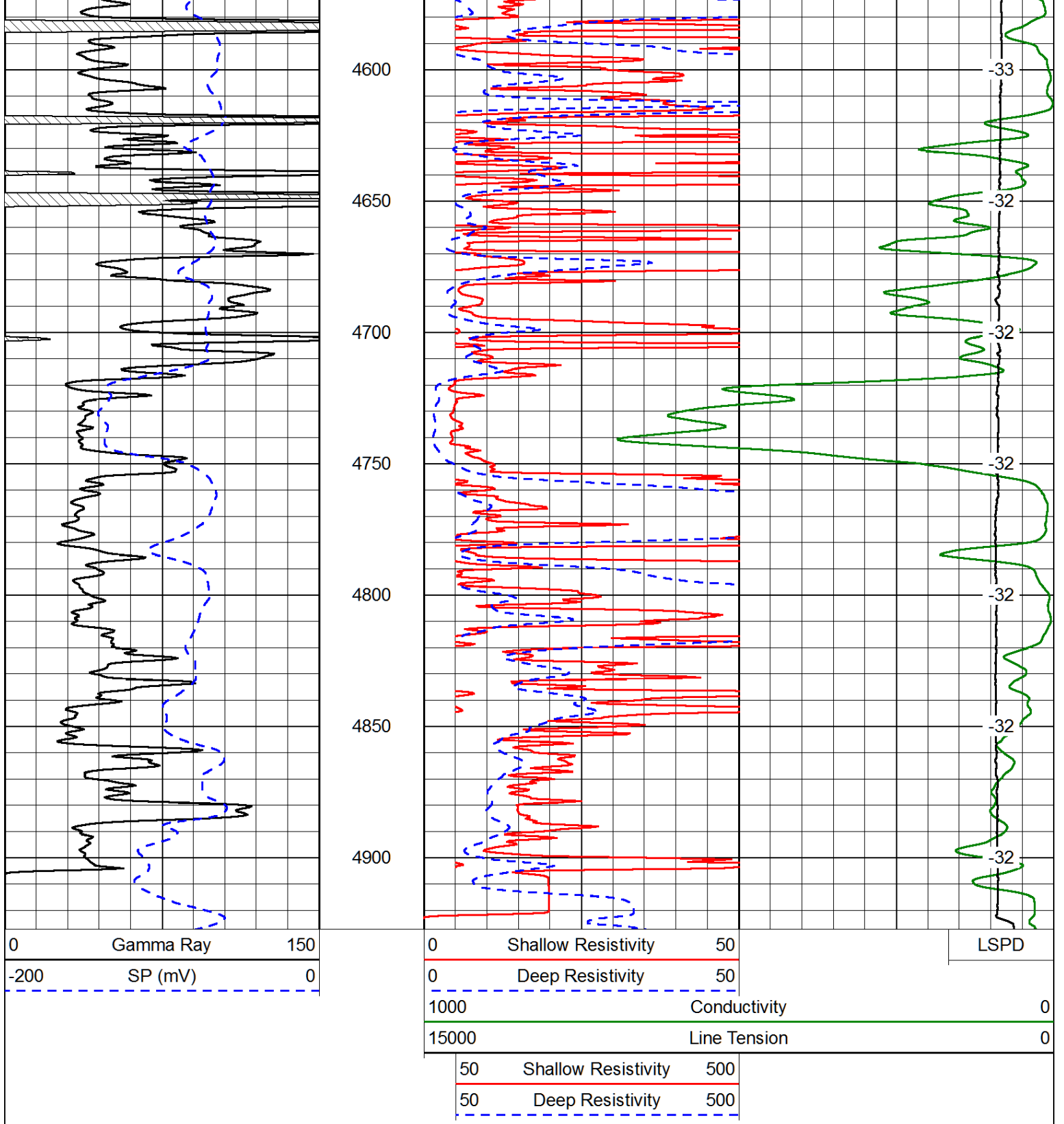




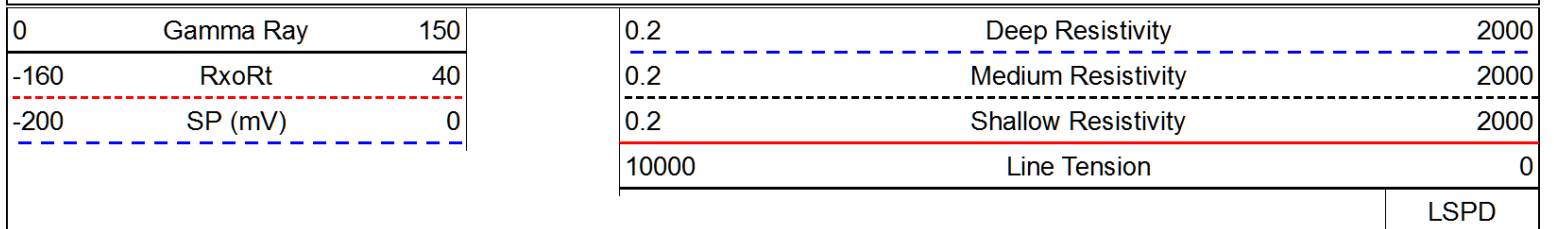


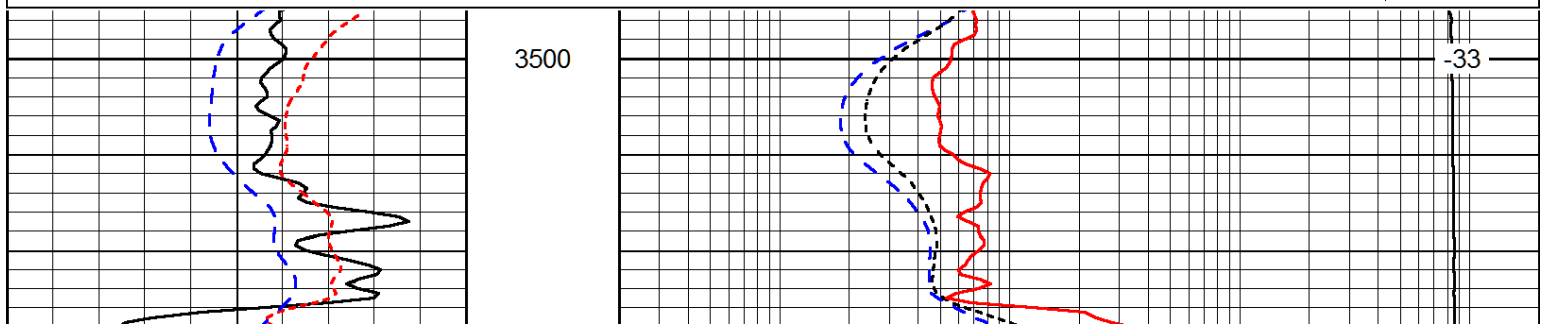
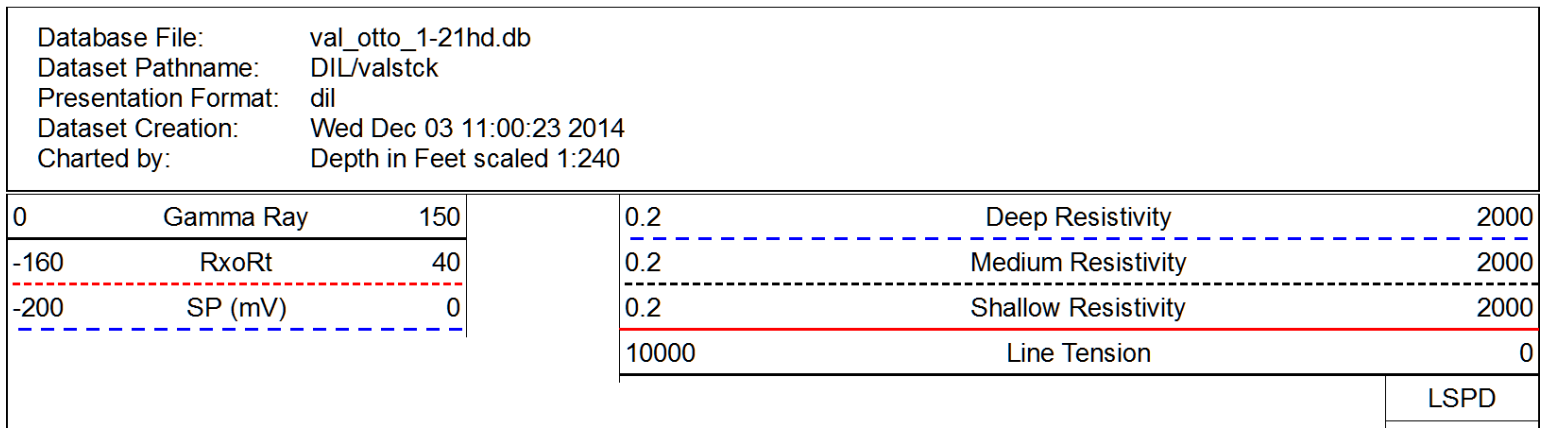
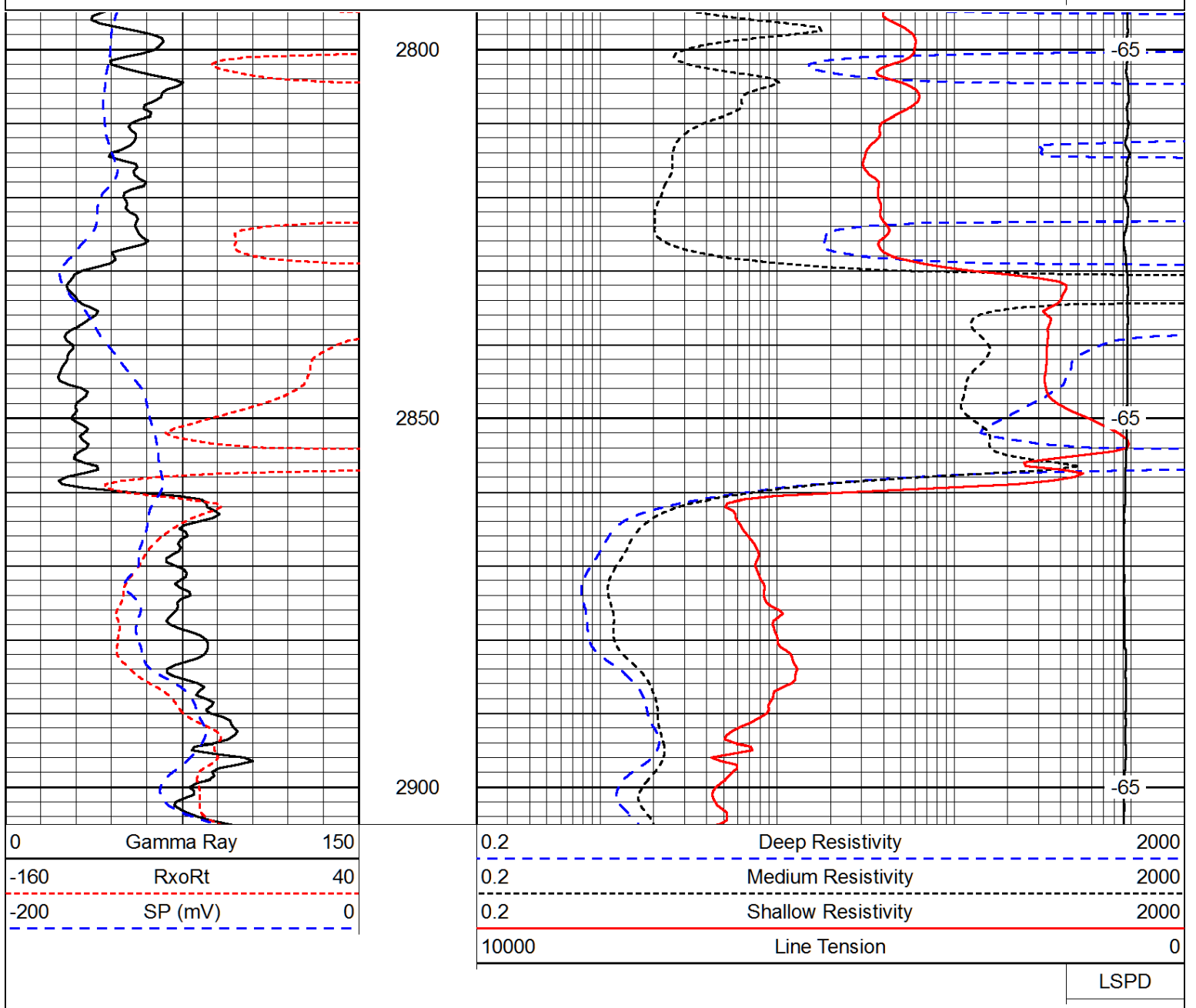


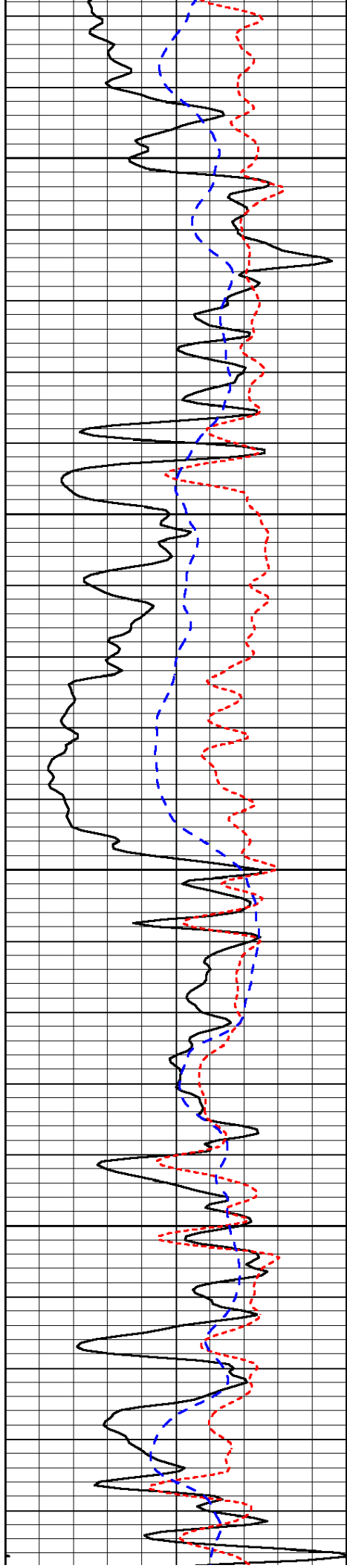




Database File: val_otto_1-21hd.db
 Dataset Pathname: DIL/valstck
 Presentation Format: dil
 Dataset Creation: Wed Dec 03 11:00:23 2014
 Charted by: Depth in Feet scaled 1:240





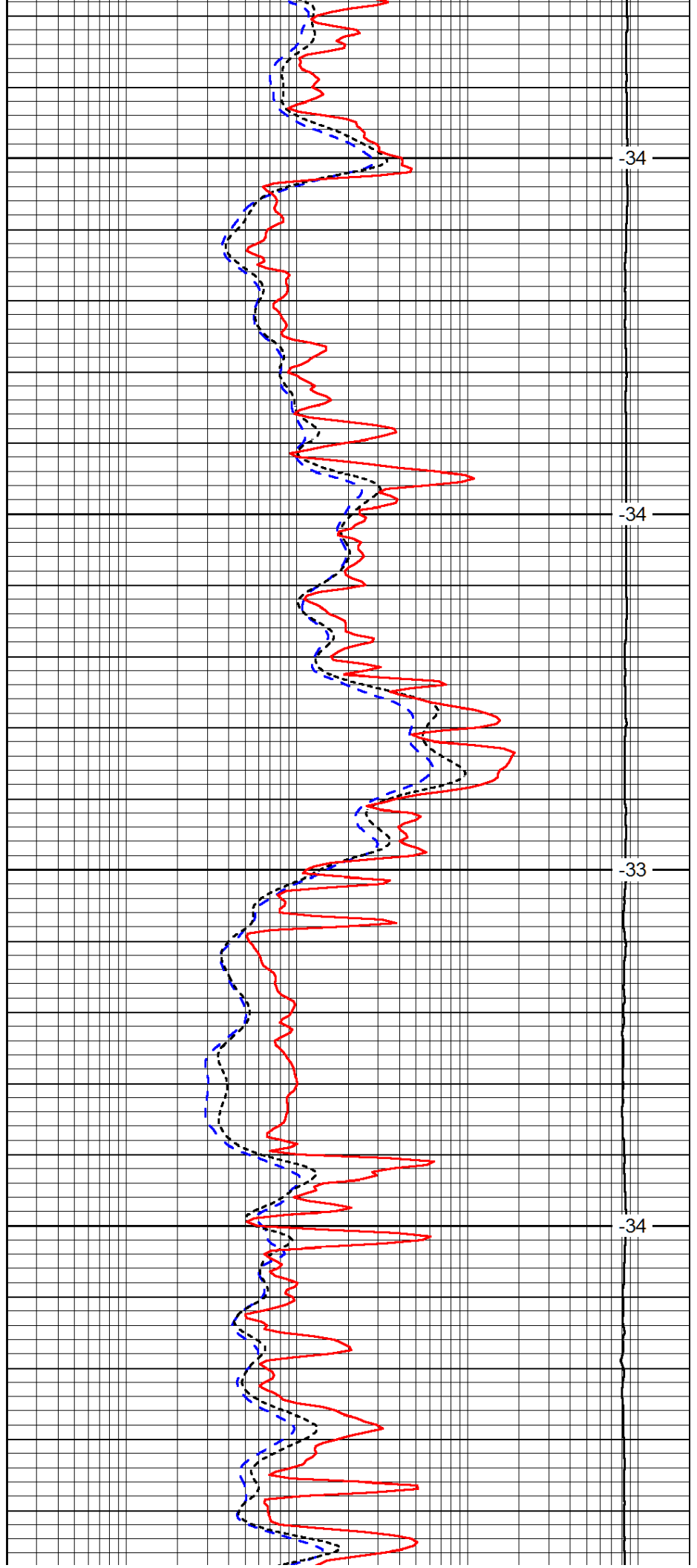


3550

3600

3650

3700

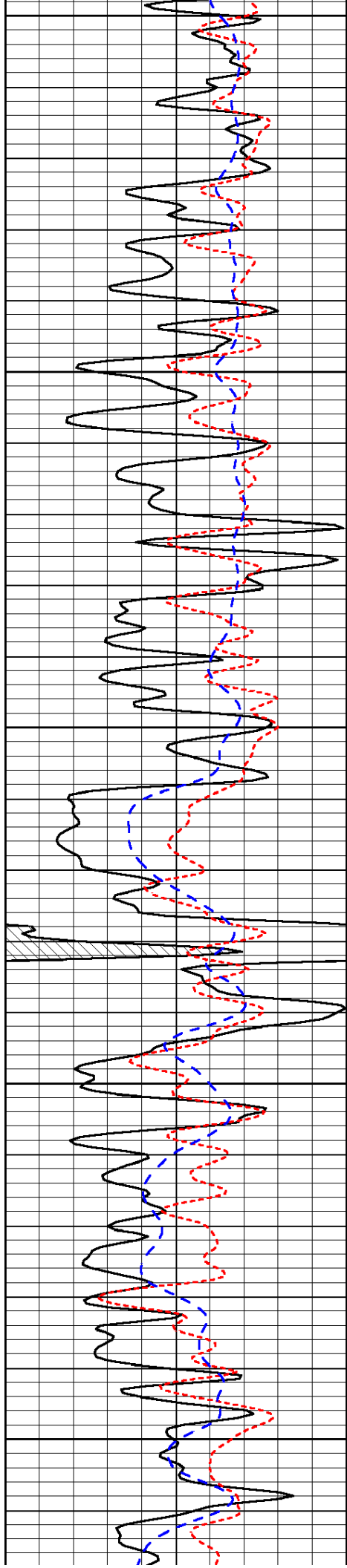


-34

-34

-33

-34



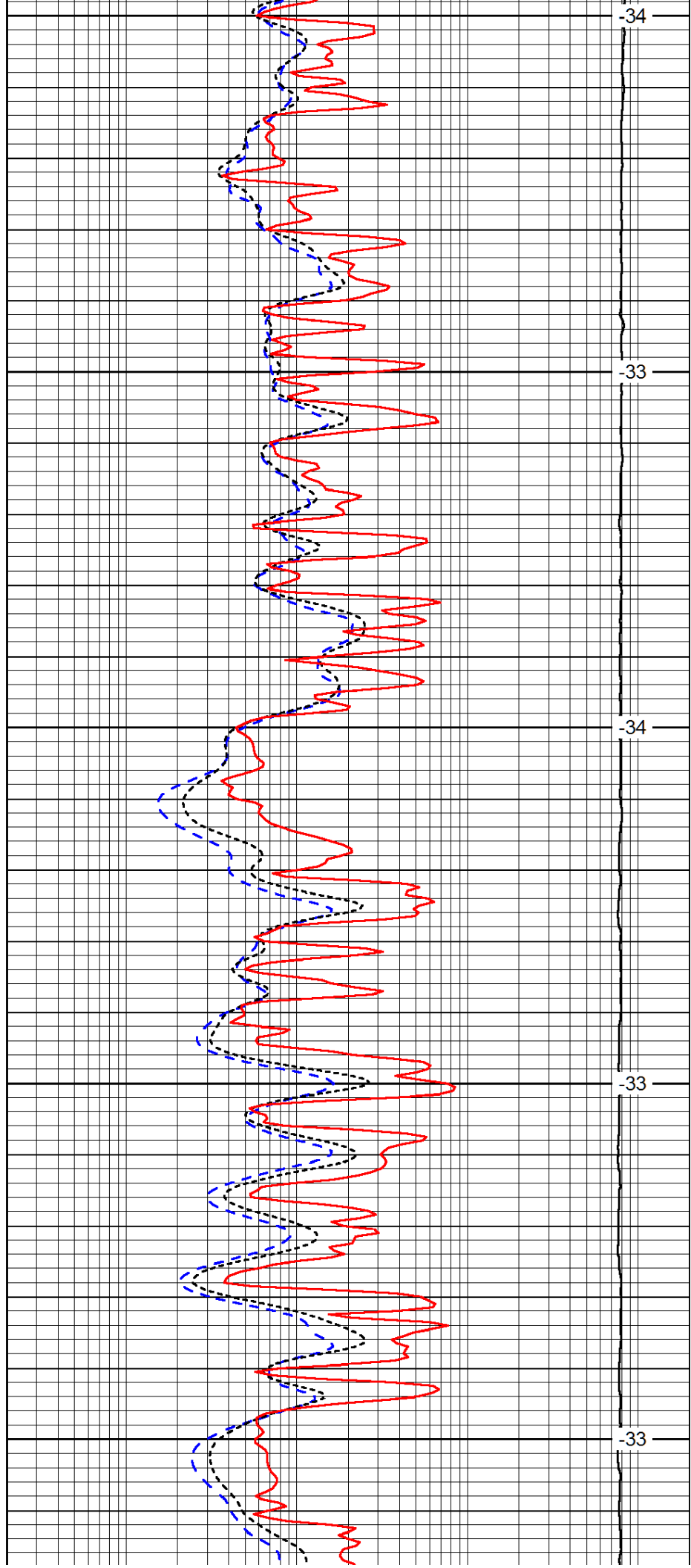
3750

3800

3850

3900

3950



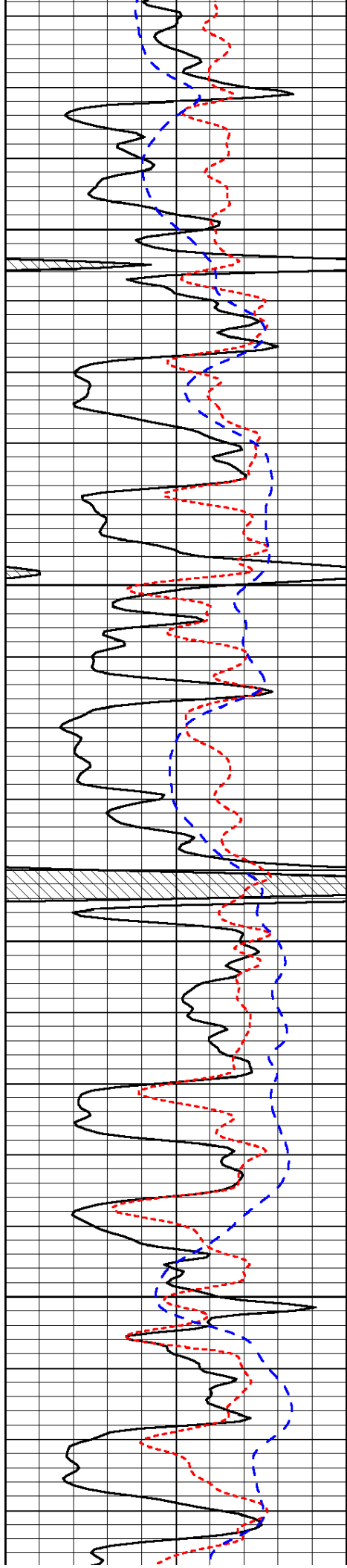
-34

-33

-34

-33

-33

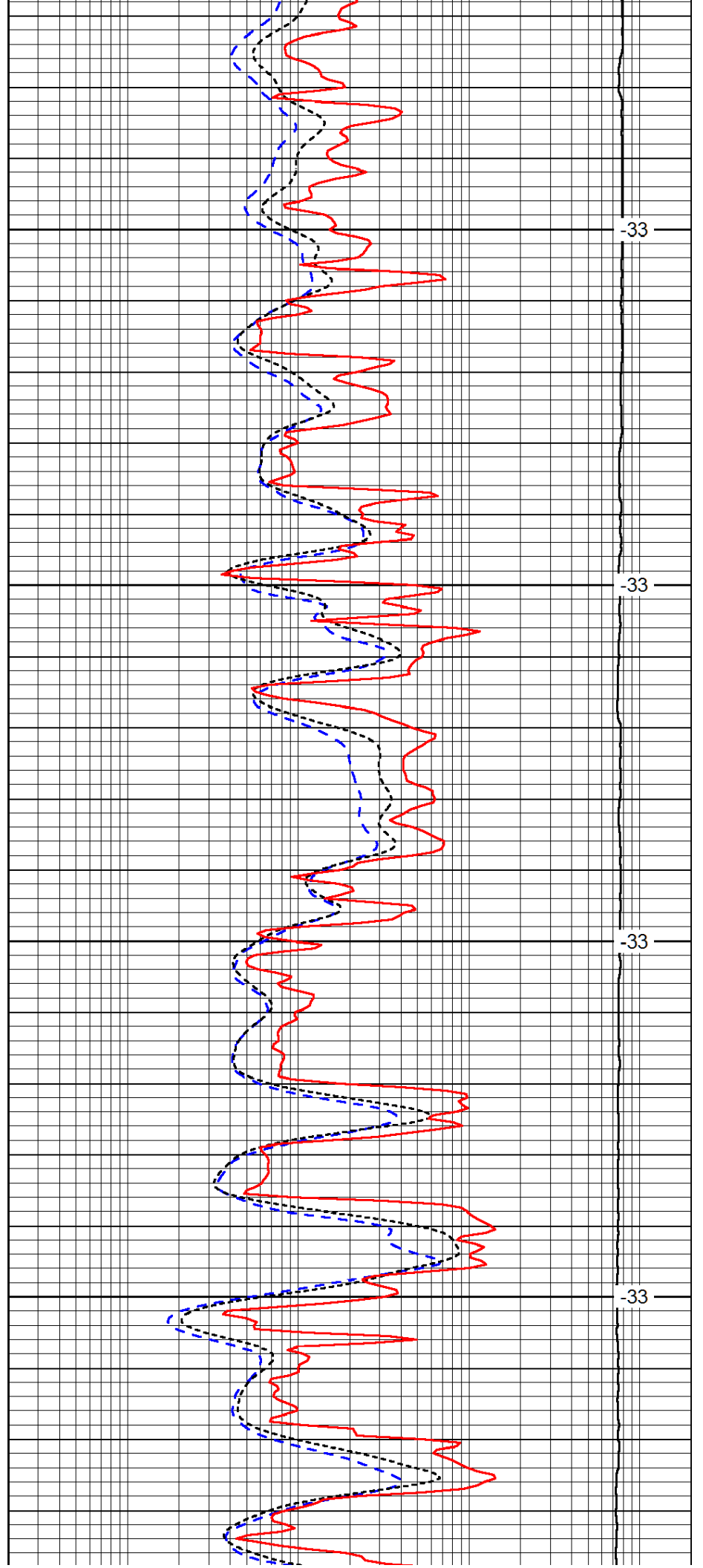


4000

4050

4100

4150

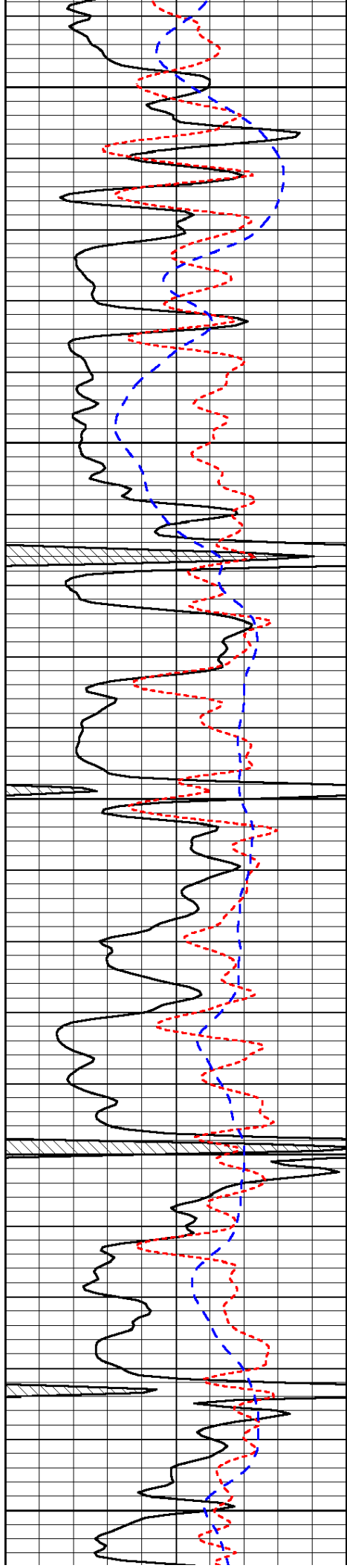


-33

-33

-33

-33



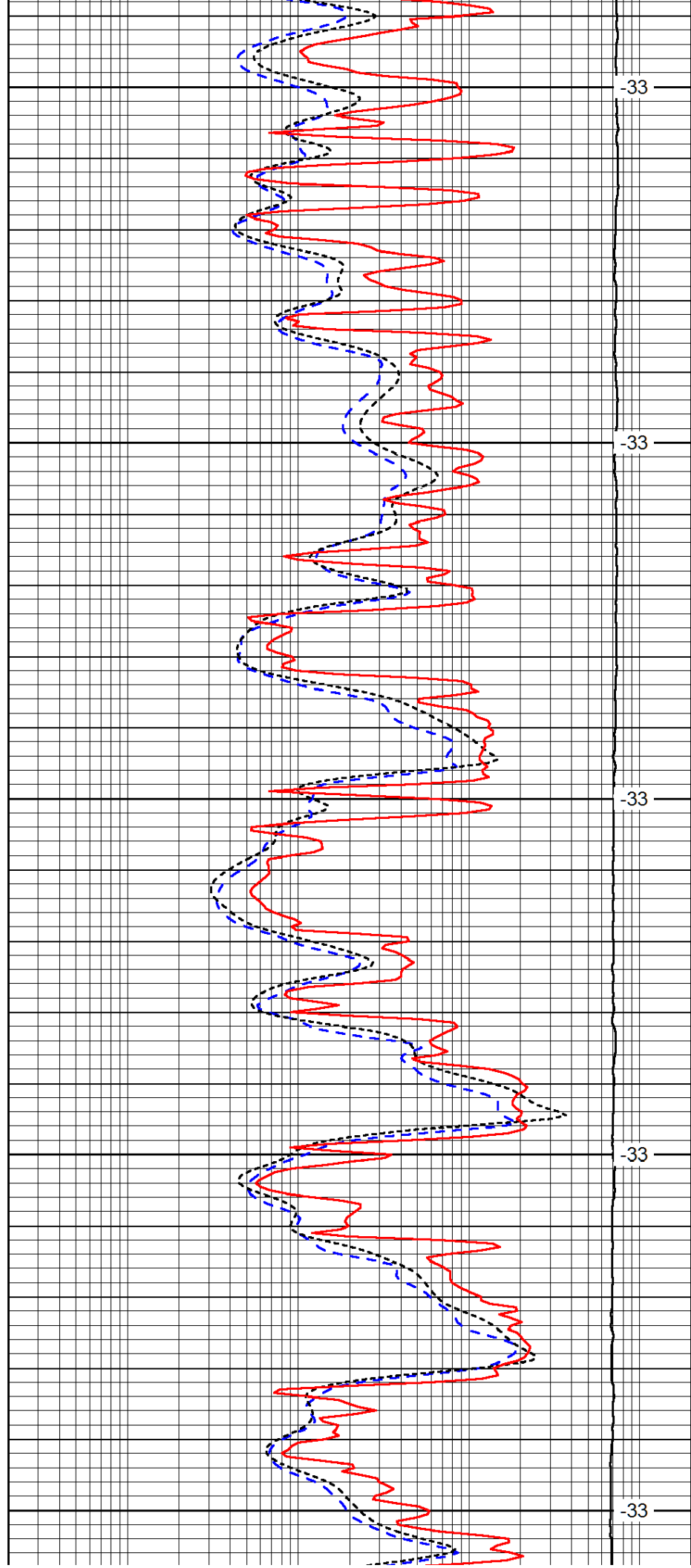
4200

4250

4300

4350

4400



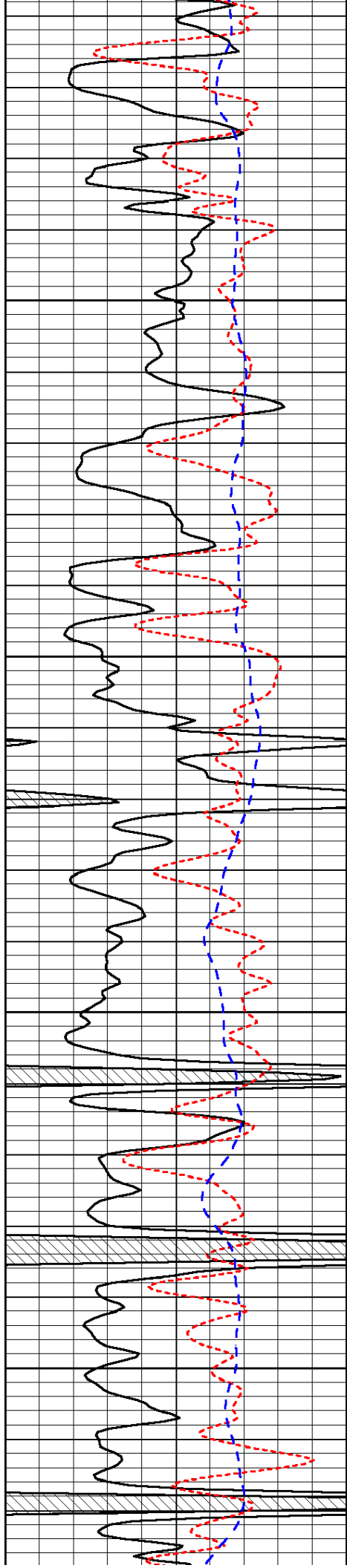
-33

-33

-33

-33

-33

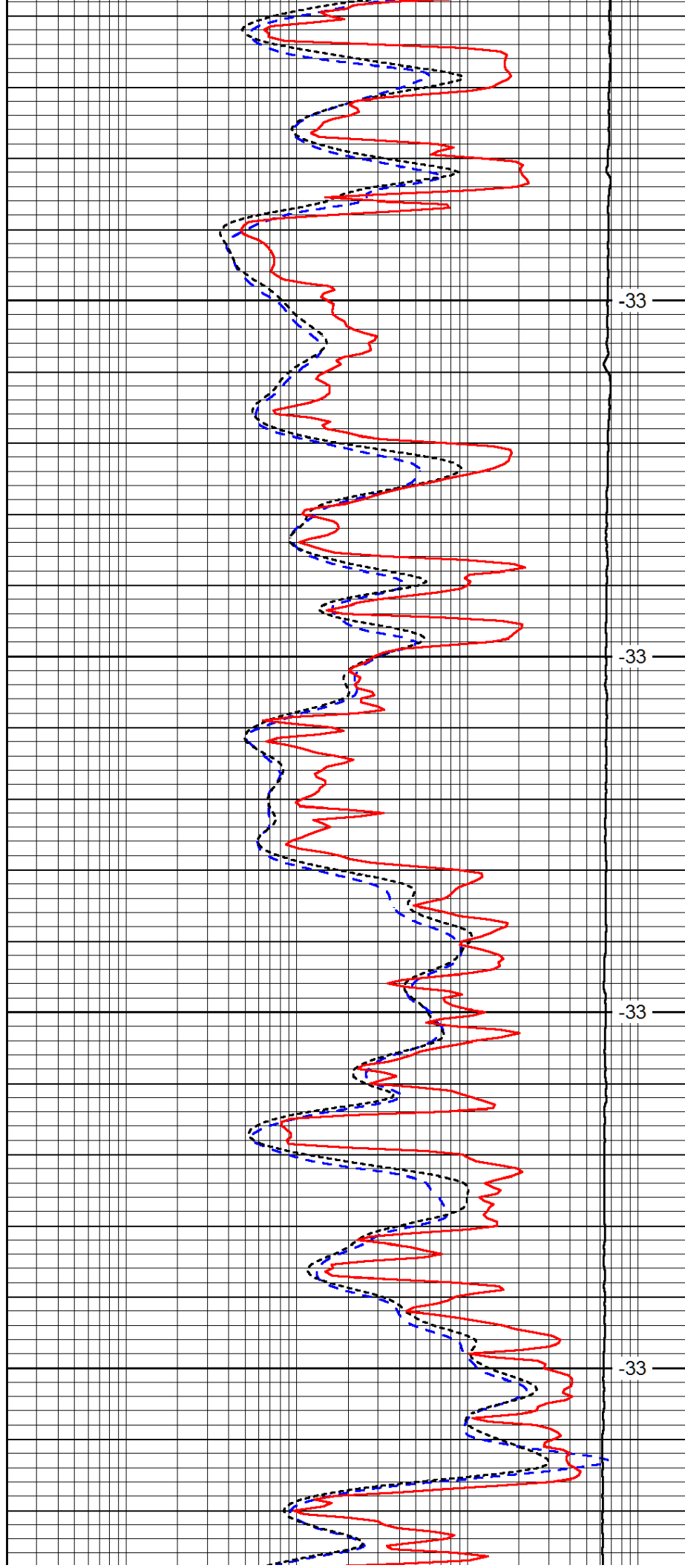


4450

4500

4550

4600

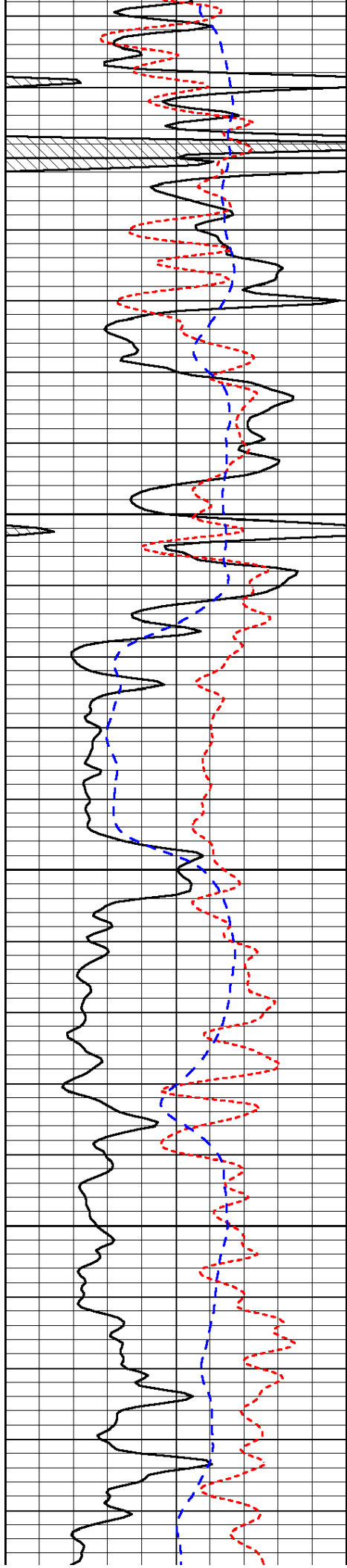


-33

-33

-33

-33

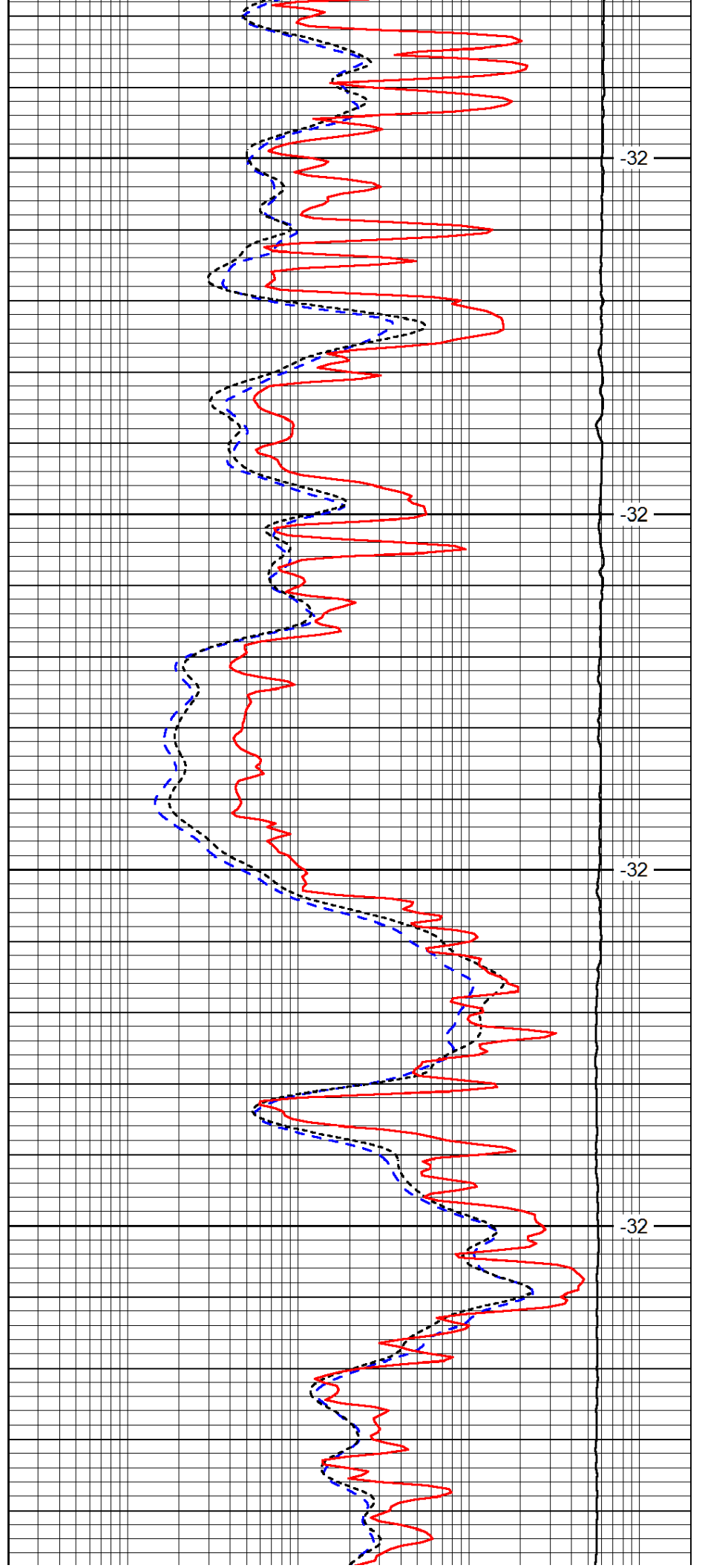


4650

4700

4750

4800

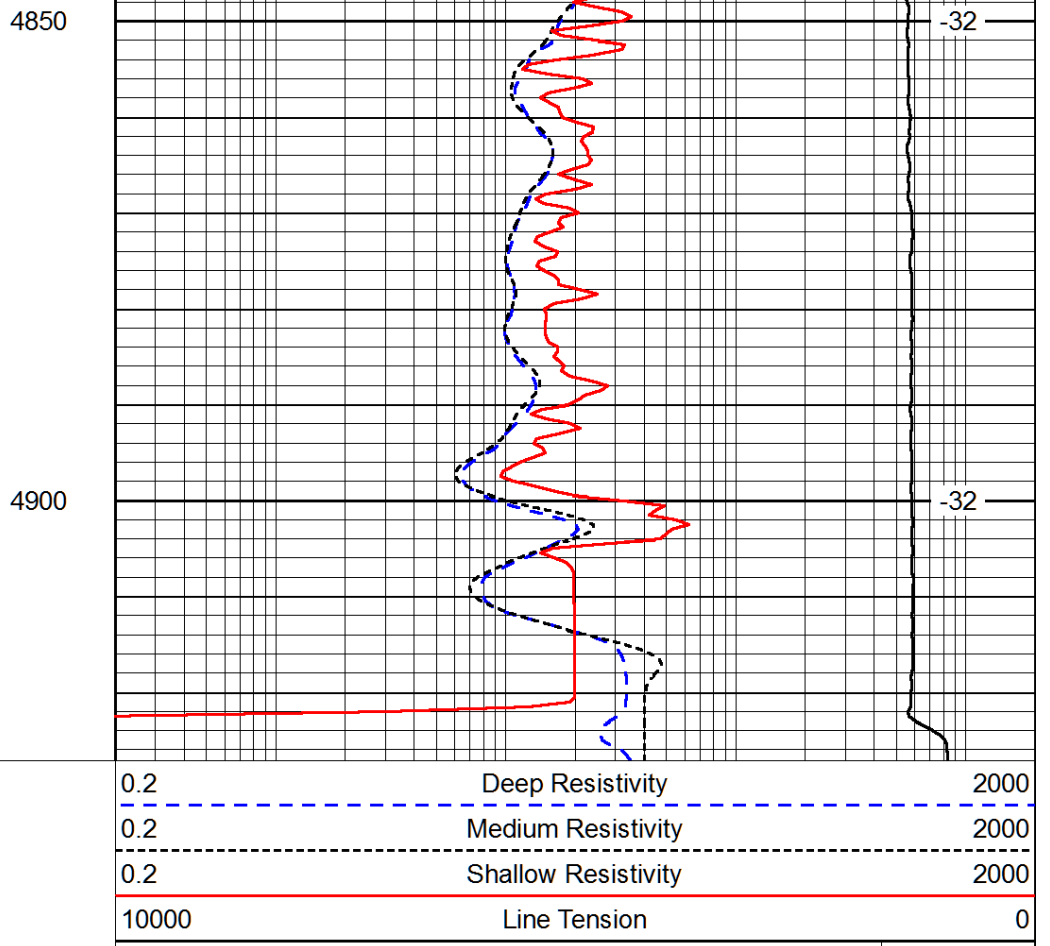
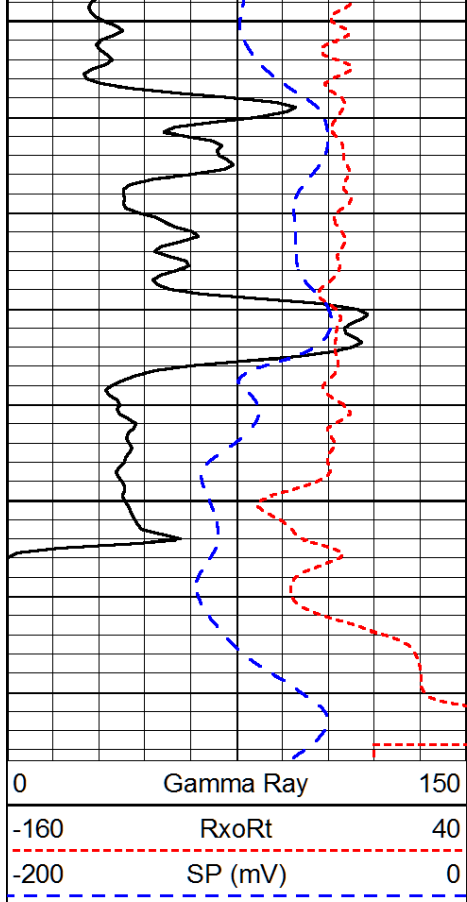


-32

-32

-32

-32



LSPD