



SONIC LOG

Company WOOLSEY OPERATING CO. LLC.
 Well MPW#1
 Field WILDCAT
 County HARPER
 State KANSAS

Company WOOLSEY OPERATING COMPANY, LLC.
 Well MPW #1
 Field WILDCAT
 County HARPER State KANSAS

Location: API # : 15-077-22177-0000
 175' FSL & 1600' FVL
 155' S. & 50' W. OF SW - SE - SW
 SEC 13 TWP 31S RGE 8W
 Permanent Datum GROUND LEVEL Elevation 1606
 Log Measured From KELLY BUSHING 12' A.G.L.
 Drilling Measured From KELLY BUSHING
 Other Services CDL/CNL/PE DIL
 Elevation K.B. 1618 D.F. 1616 G.L. 1606

Date	10/30/18
Run Number	TWO
Depth Driller	4926
Depth Logger	4931
Bottom Logged Interval	4923
Top Log Interval	200
Casing Driller	8 5/8" @ 274
Casing Logger	274
Bit Size	7 7/8"
Type Fluid in Hole	CHEMICAL MUD
Density / Viscosity	9.5/57
pH / Fluid Loss	11.5/8.0
Source of Sample	FLOWLINE
Rim @ Meas. Temp	.950 @ 80F
Rmf @ Meas. Temp	.713 @ 80F
Rmc @ Meas. Temp	1.14 @ 80F
Source of Rmf / Rmc	MEASUREMENT
Rim @ BHT	.613 @ 124F
Time Circulation Stopped	5.5 HOURS
Time Logger on Bottom	10:30 P.M.
Maximum Recorded Temperature	124F
Equipment Number	922339
Location	HAYS, KANSAS
Recorded By	JEFF LUEBBERS
Witnessed By	BILL KLAVER

<<< Fold Here >>>

All interpretations are opinions based on inferences from electrical or other measurements and we cannot and do not guarantee the accuracy or correctness of any interpretation, and we shall not, except in the case of gross or willful negligence on our part, be liable or responsible for any loss, costs, damages, or expenses incurred or sustained by anyone resulting from any interpretation made by any of our officers, agents or employees. These interpretations are also subject to our general terms and conditions set out in our current Price Schedule.

Comments

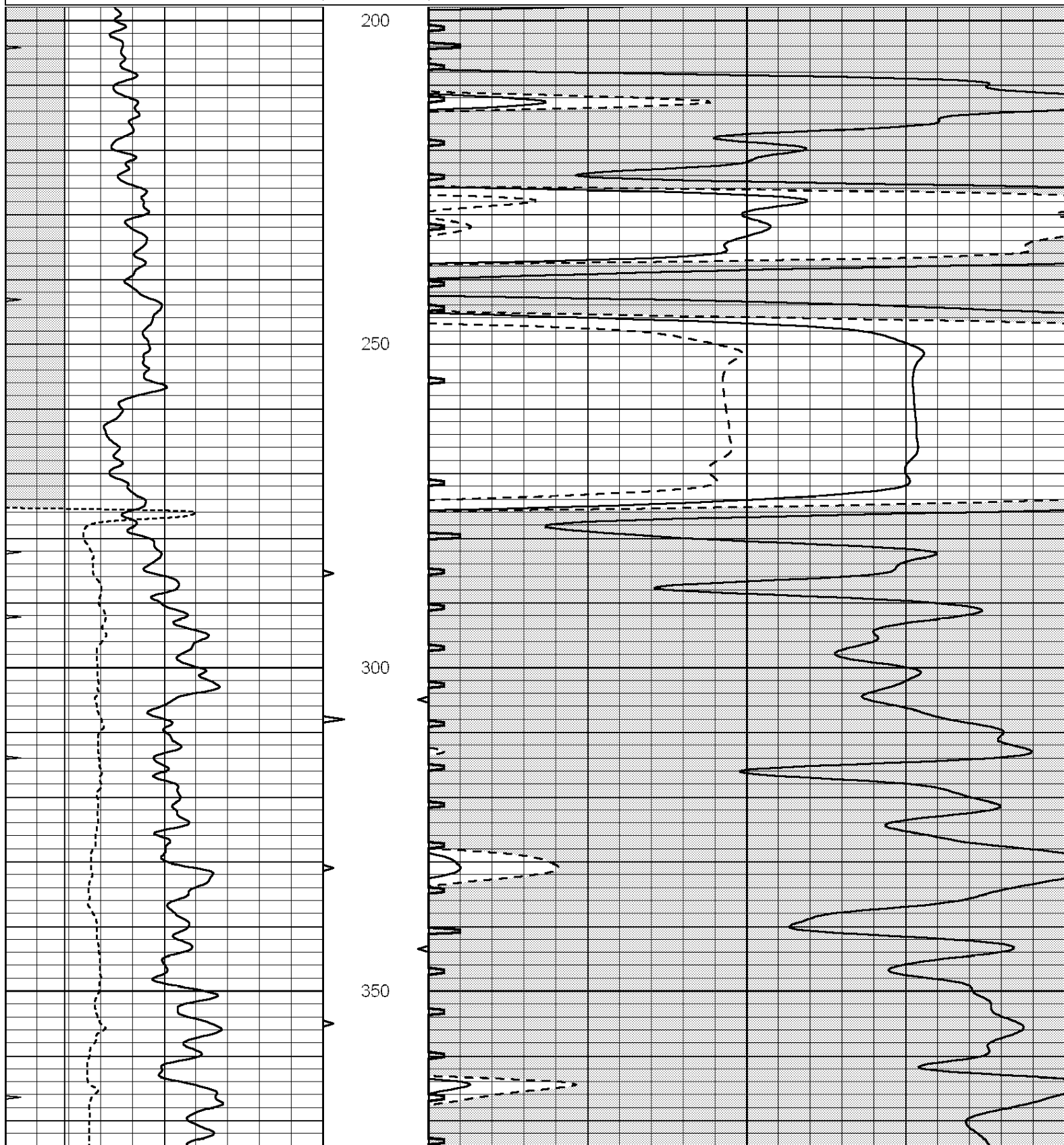
THANK YOU FOR USING ELI WIRELINE HAYS, KANSAS (785) 628-6395
 DIRECTIONS
 DUQUOIN, KS., 1S. ON HWY 14 TO "NW 150 RD.", 6W. TO "60TH", 2S., 1/4E., N. INTO

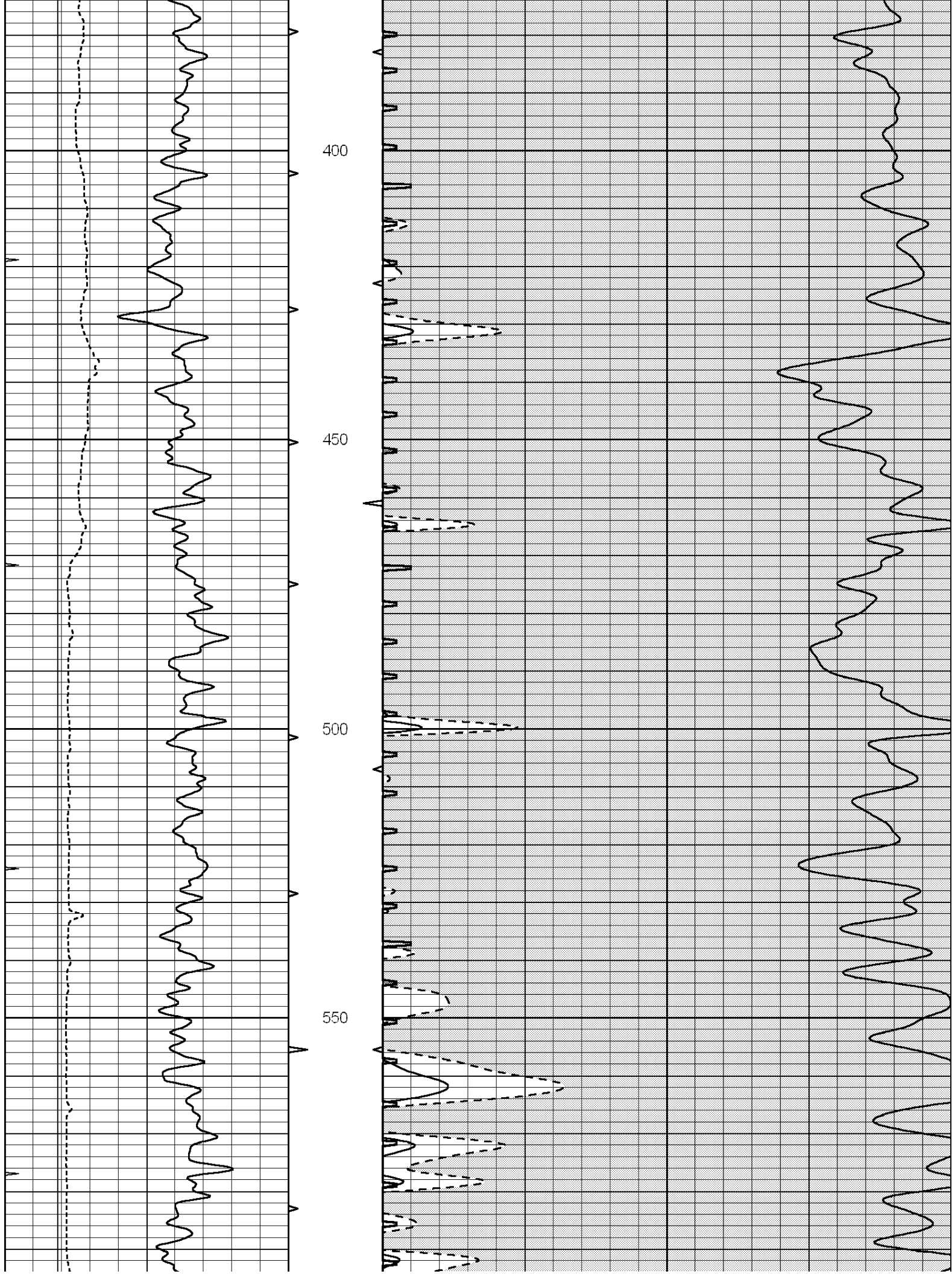


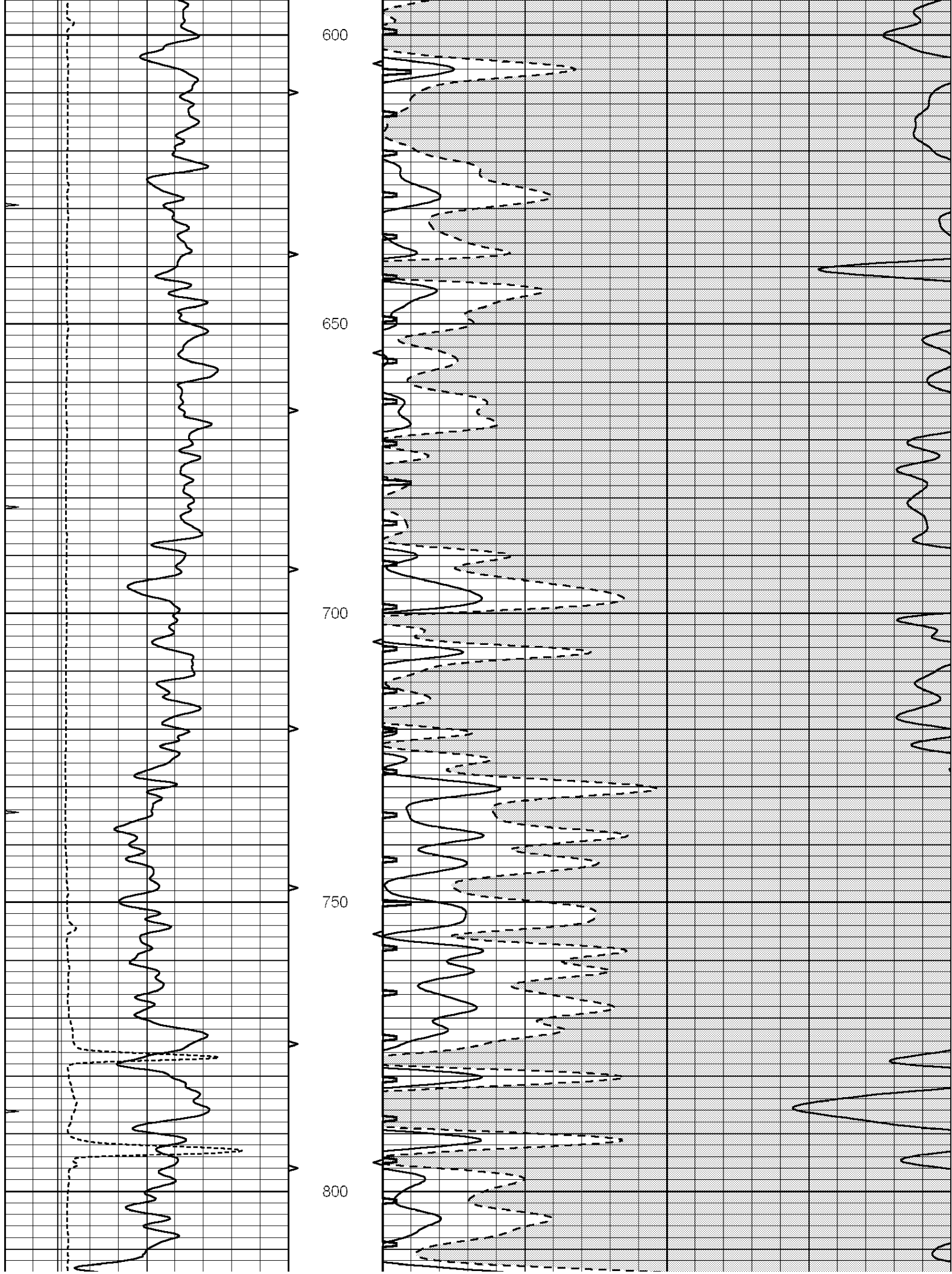
MAIN SECTION

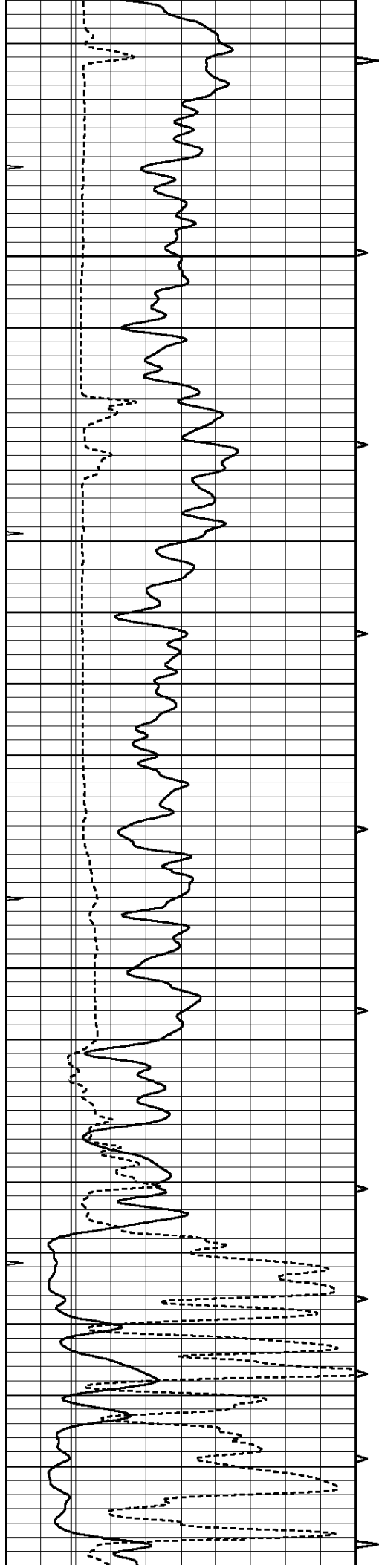
Database File: 2950pe.db
 Dataset Pathname: pass6.5
 Presentation Format: slt
 Dataset Creation: Wed Oct 31 00:44:12 2018
 Charted by: Depth in Feet scaled 1:240

0	GAMMA RAY (GAPI)	150	ABHV	140	DELTA TIME (usec/ft)	40
6	CALIPER (in)	16	10 (ft3)	0	30	SONIC POROSITY (pu)
0	MINMK	20	TBHV	0	ITT (msec)	20
			0 (ft3)	10		







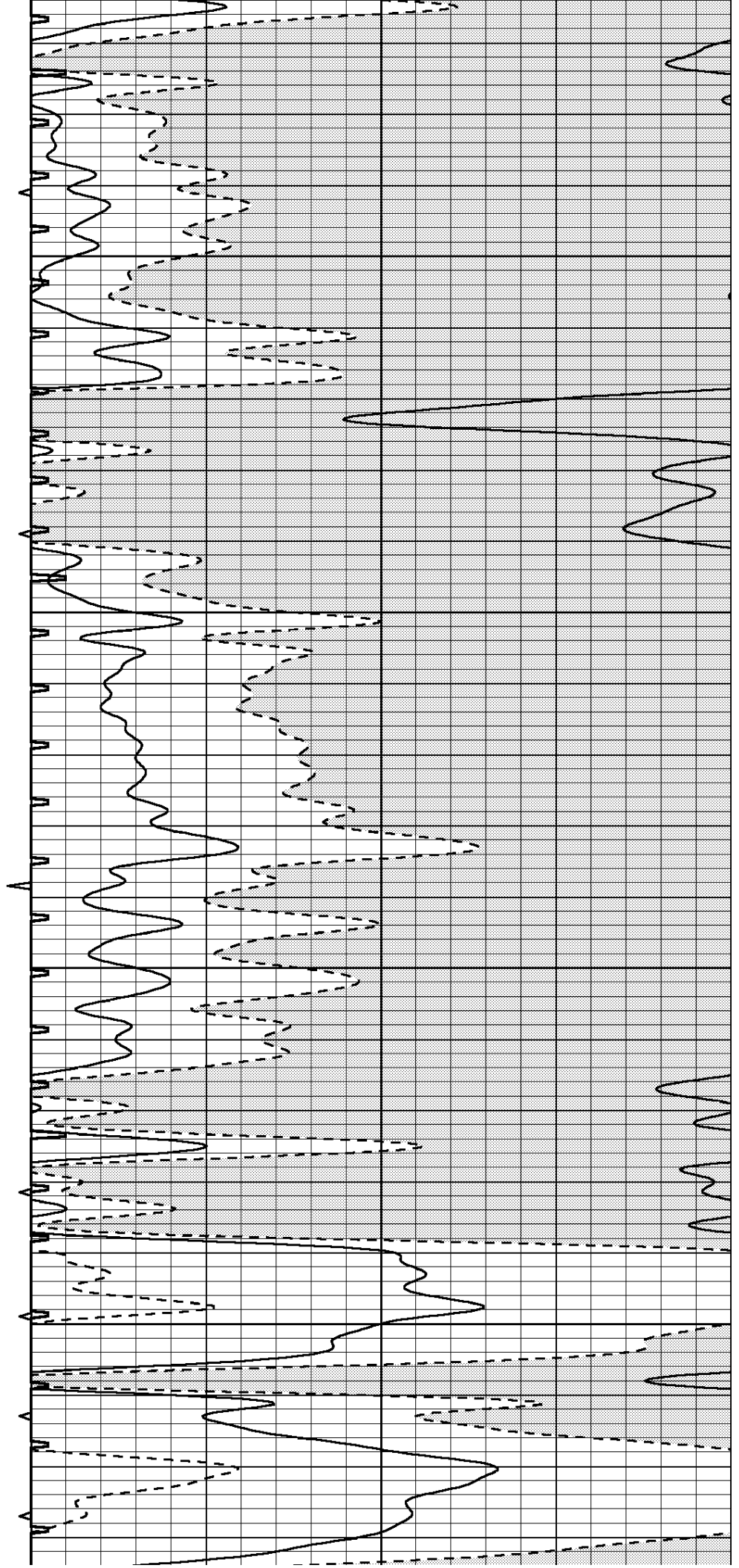


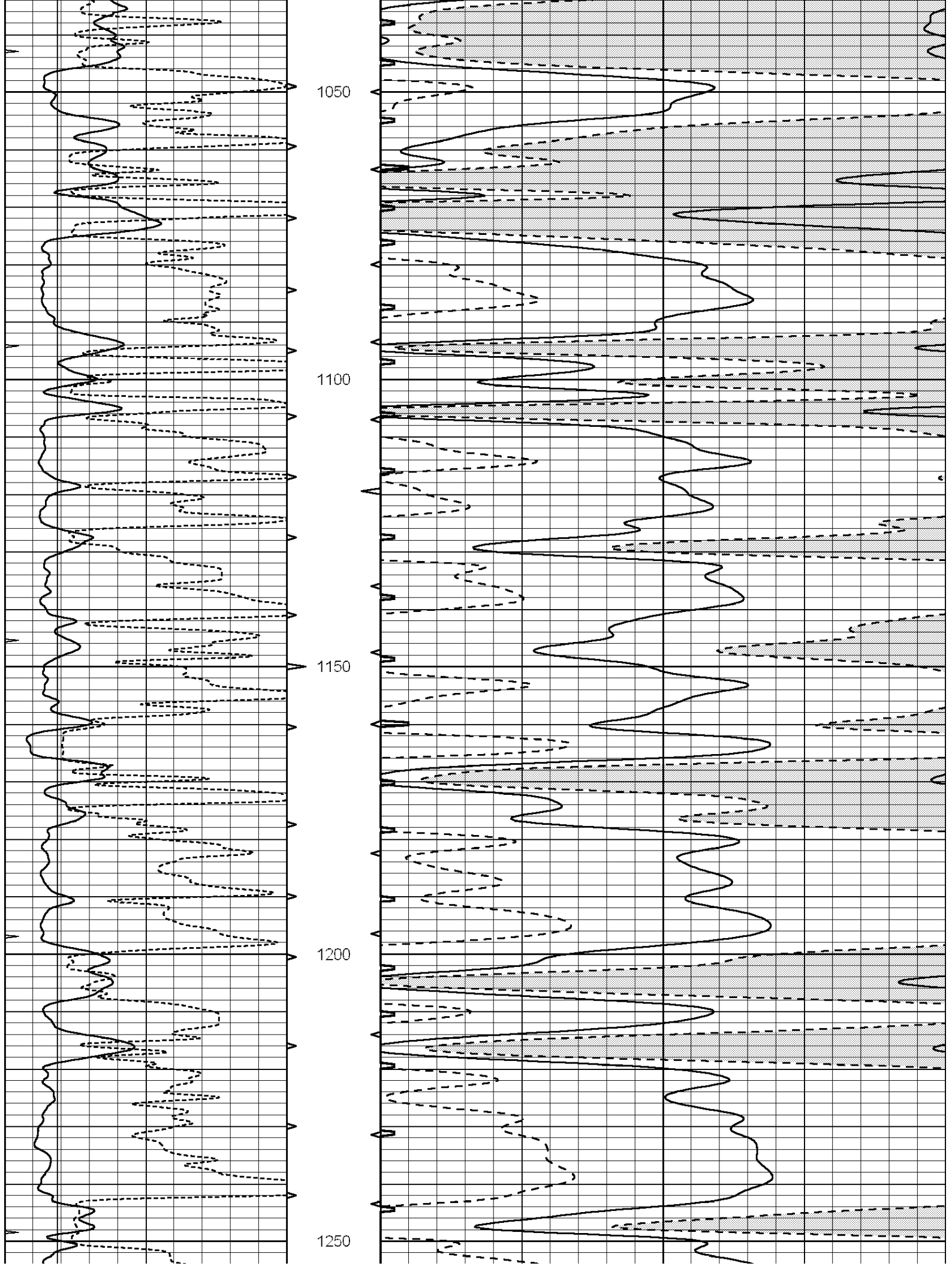
850

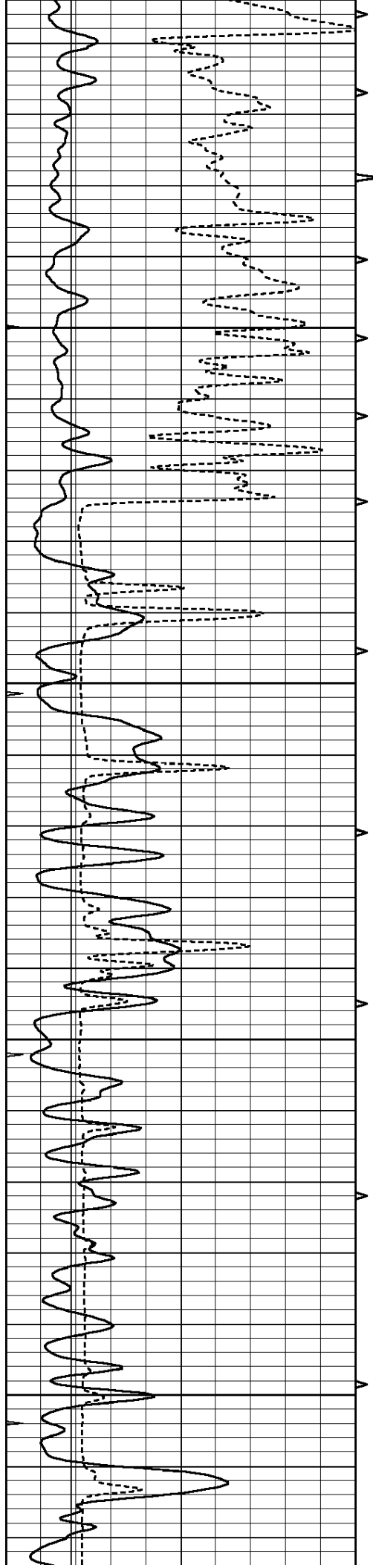
900

950

1000





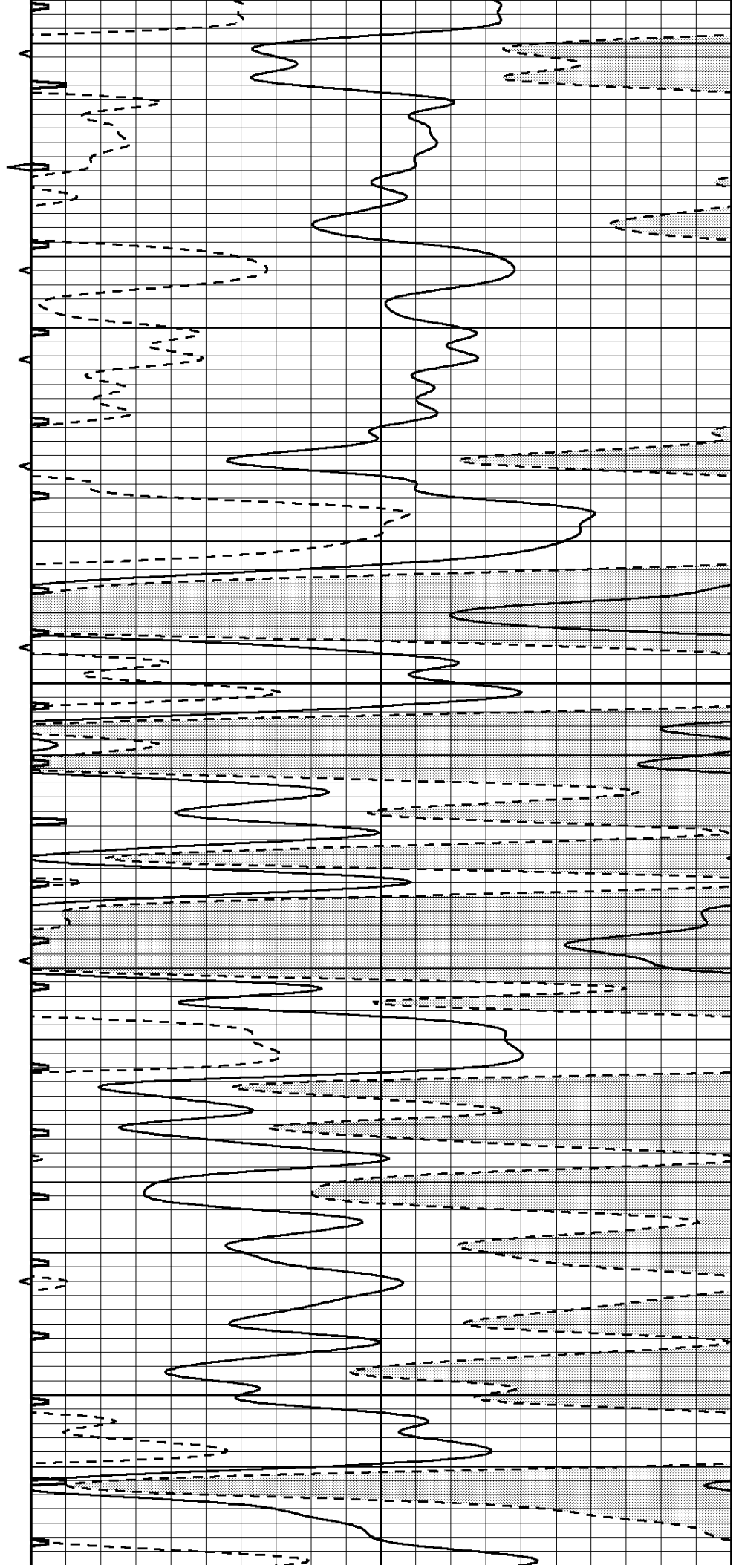


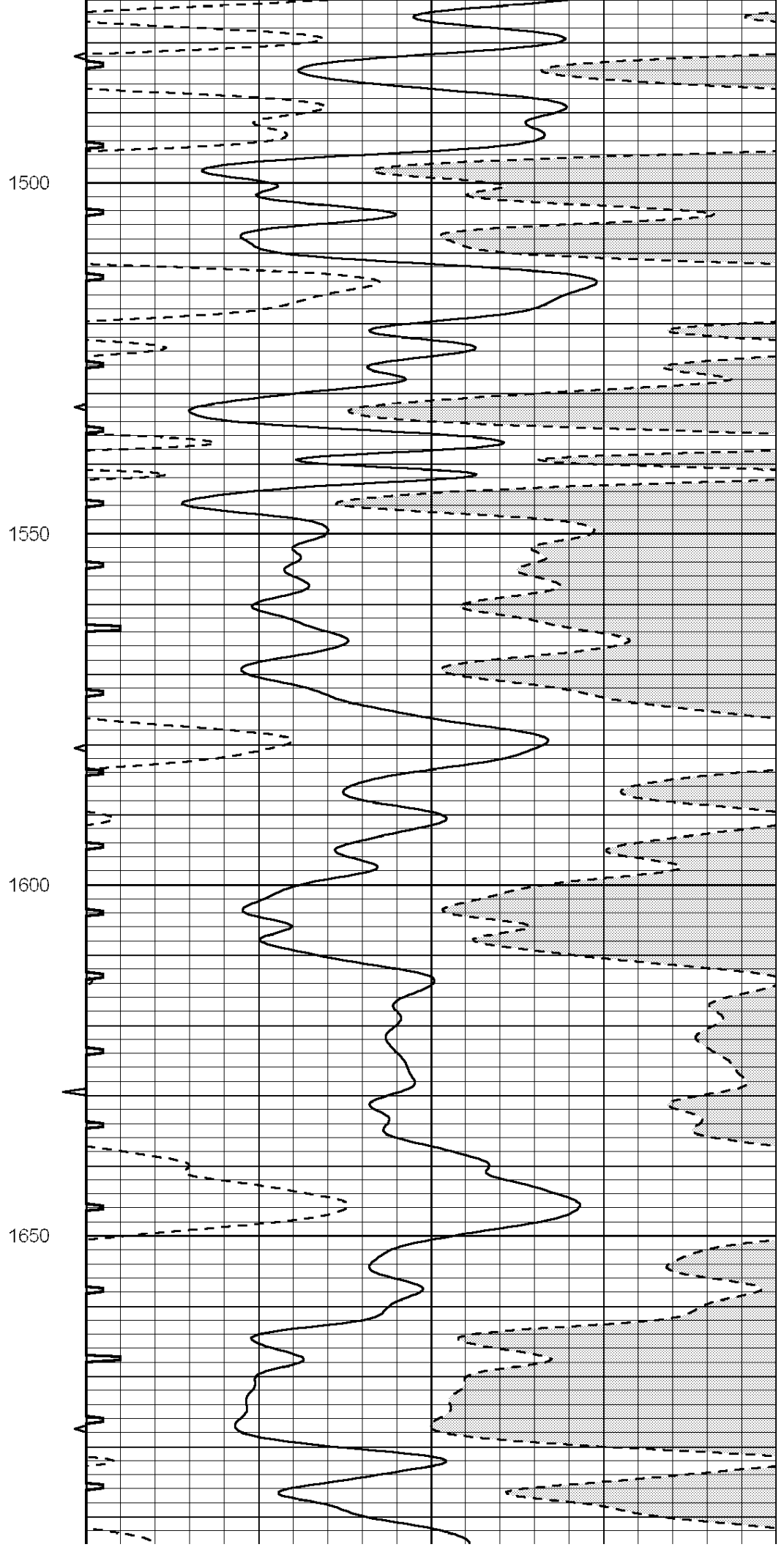
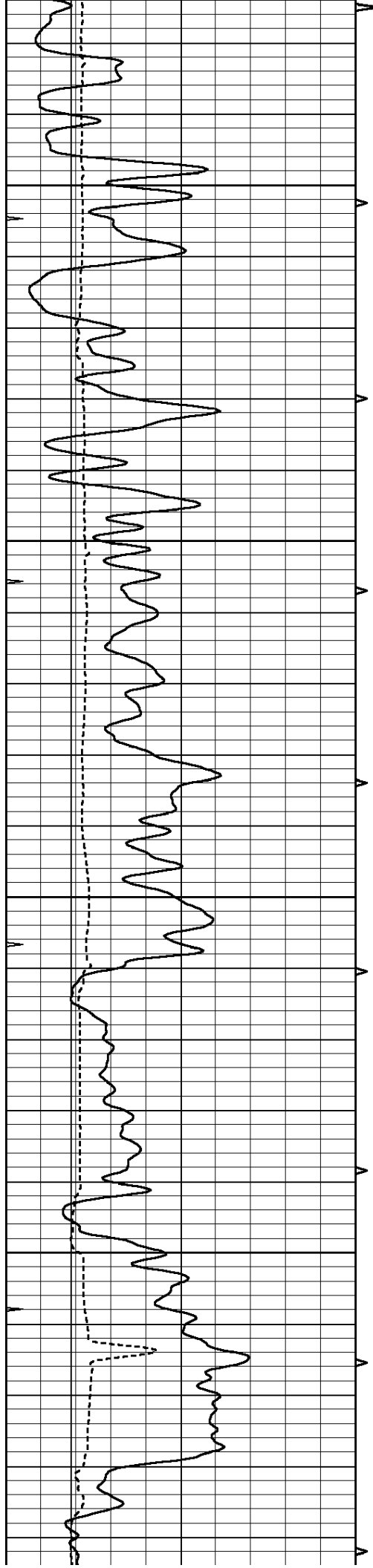
1300

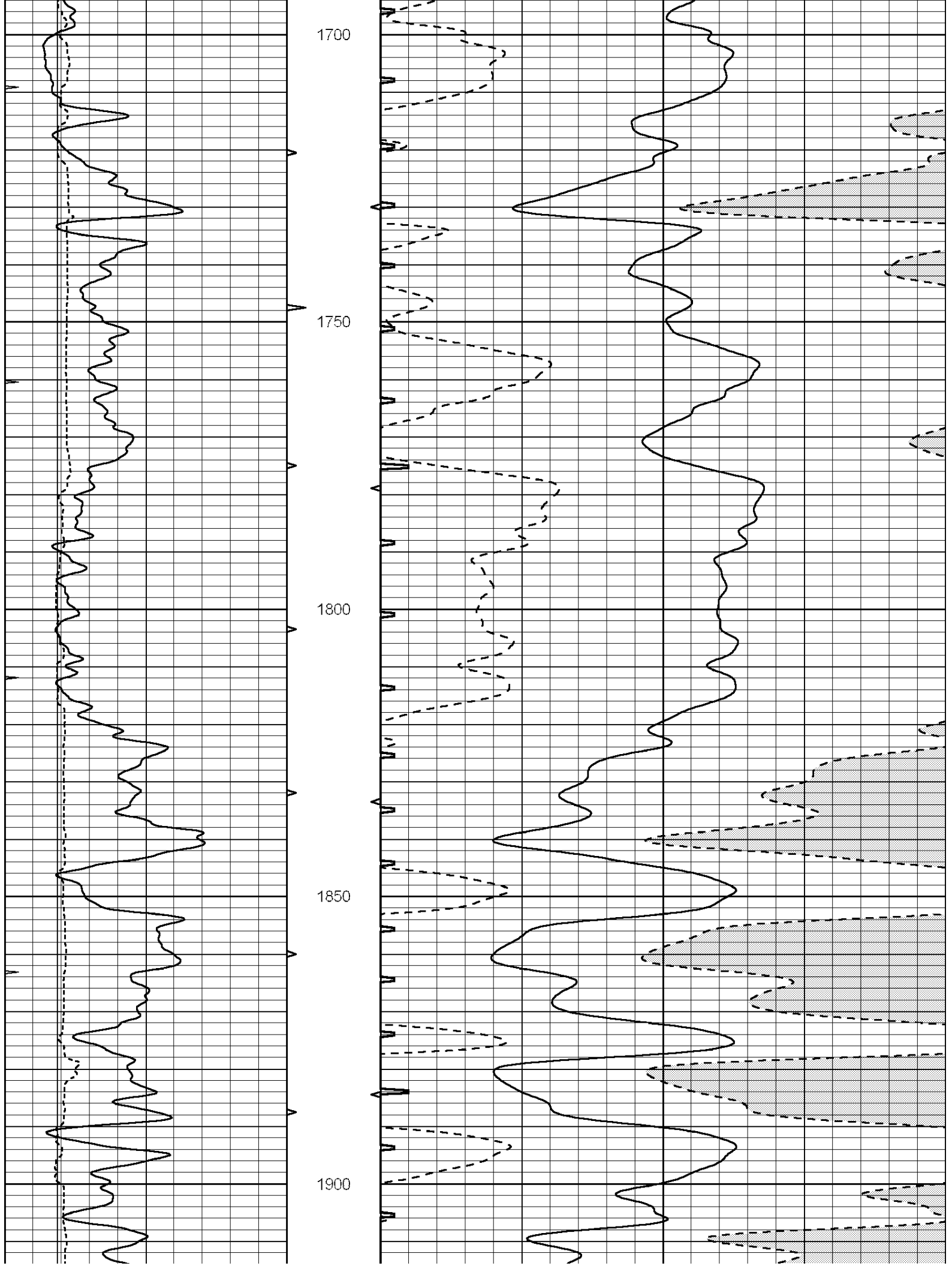
1350

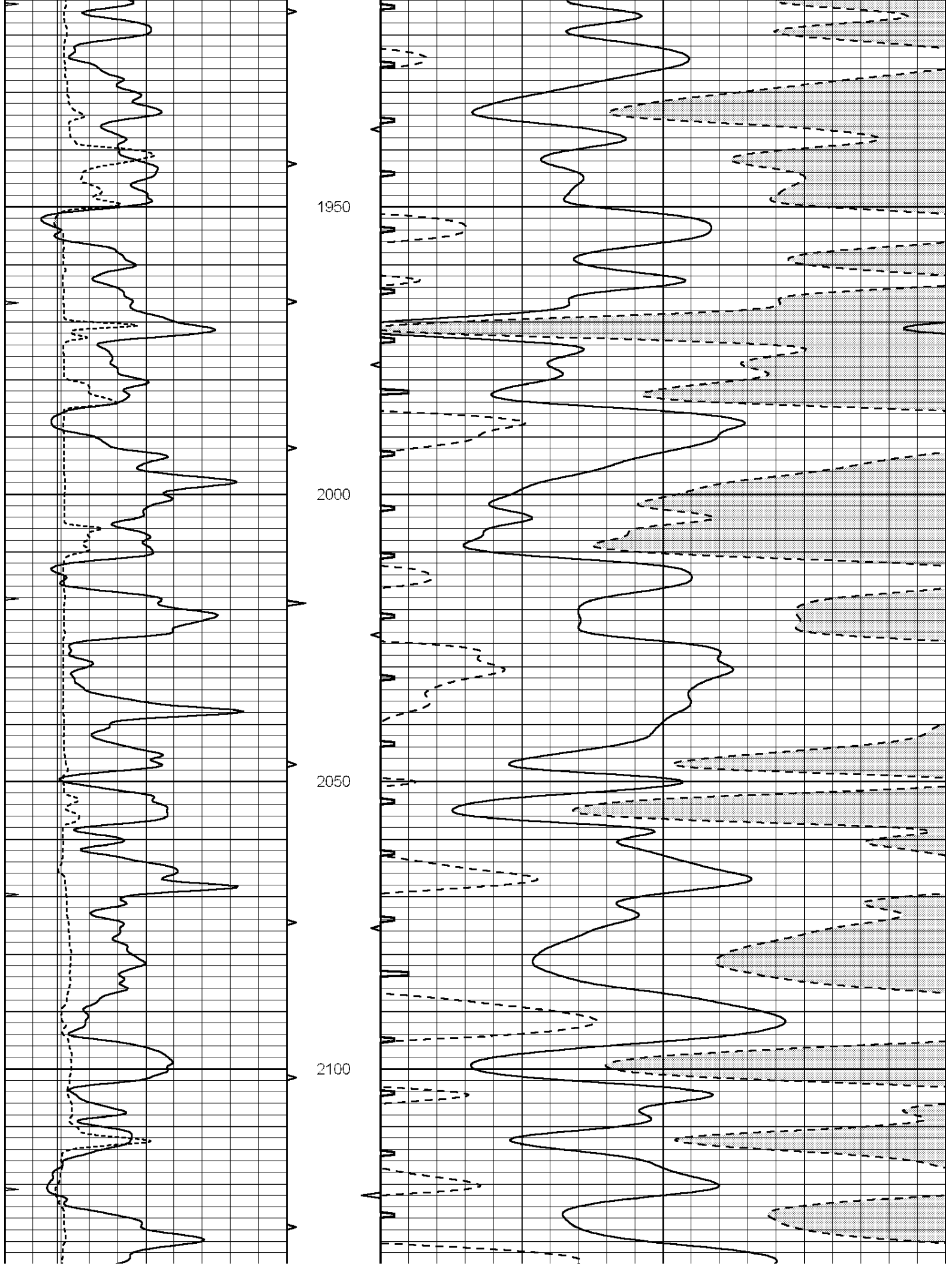
1400

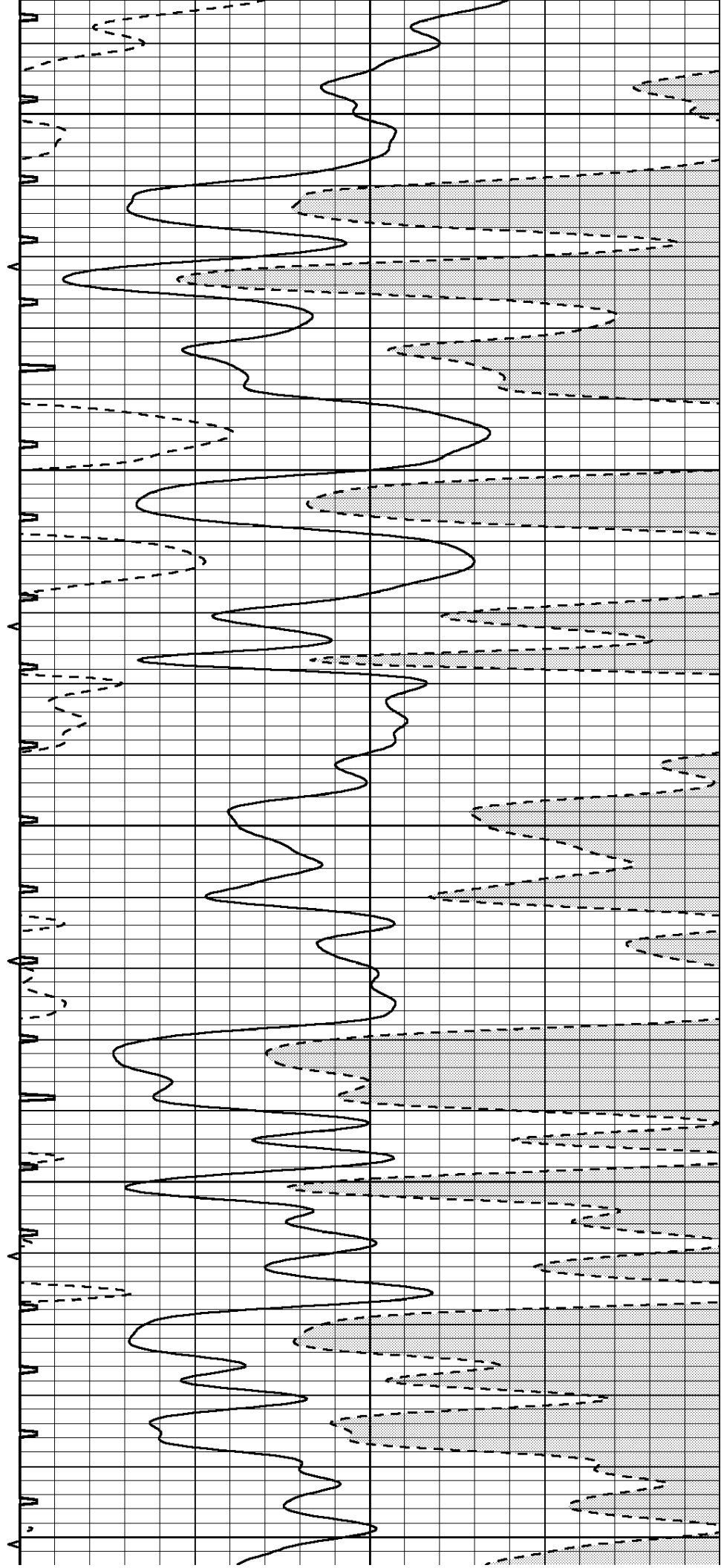
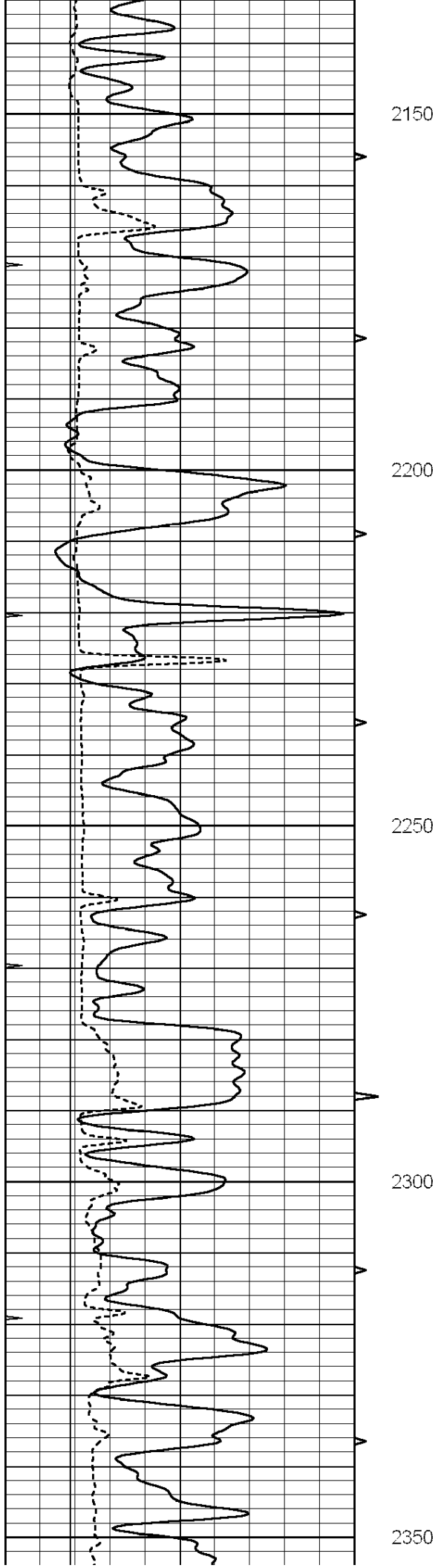
1450

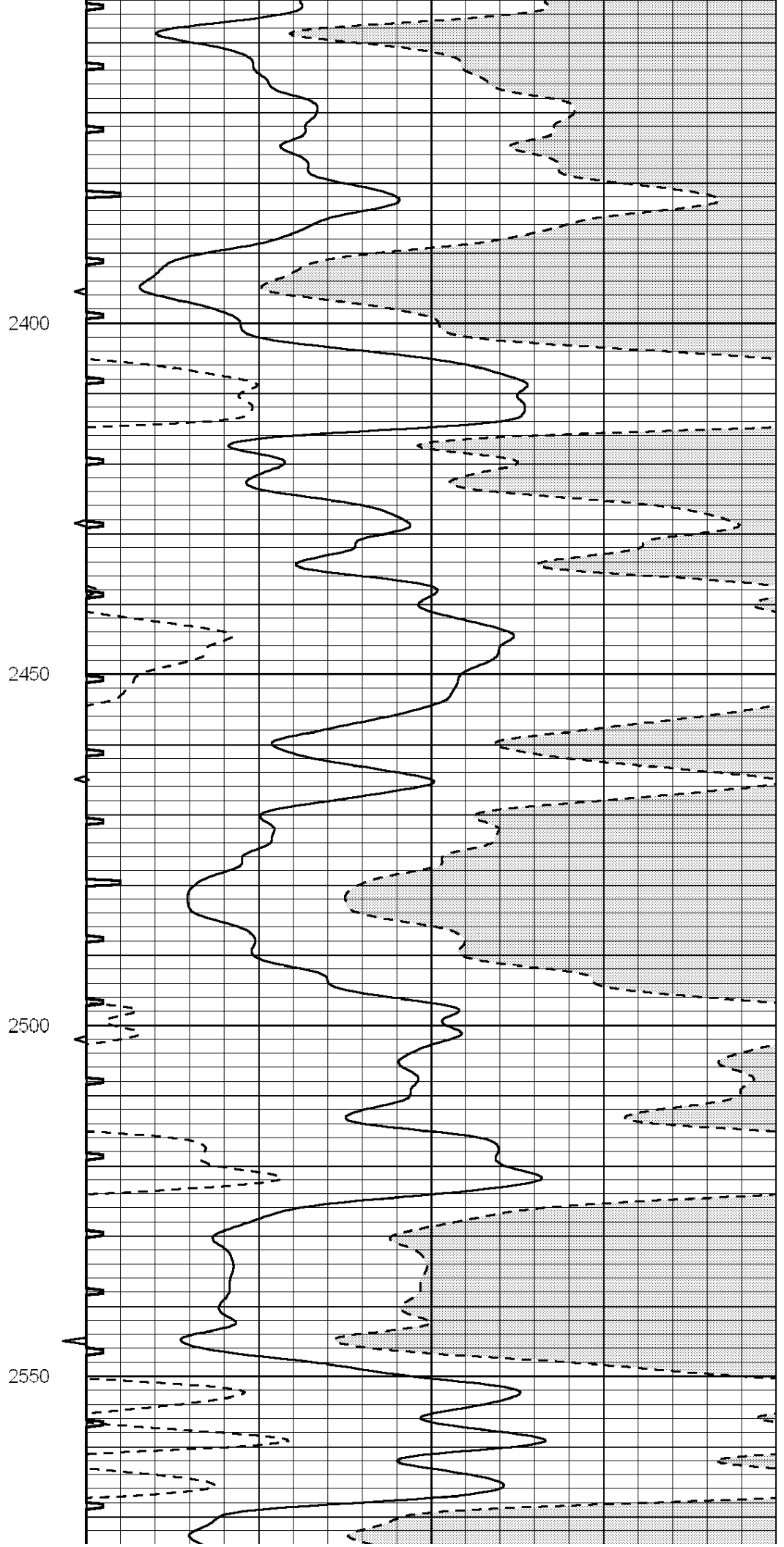
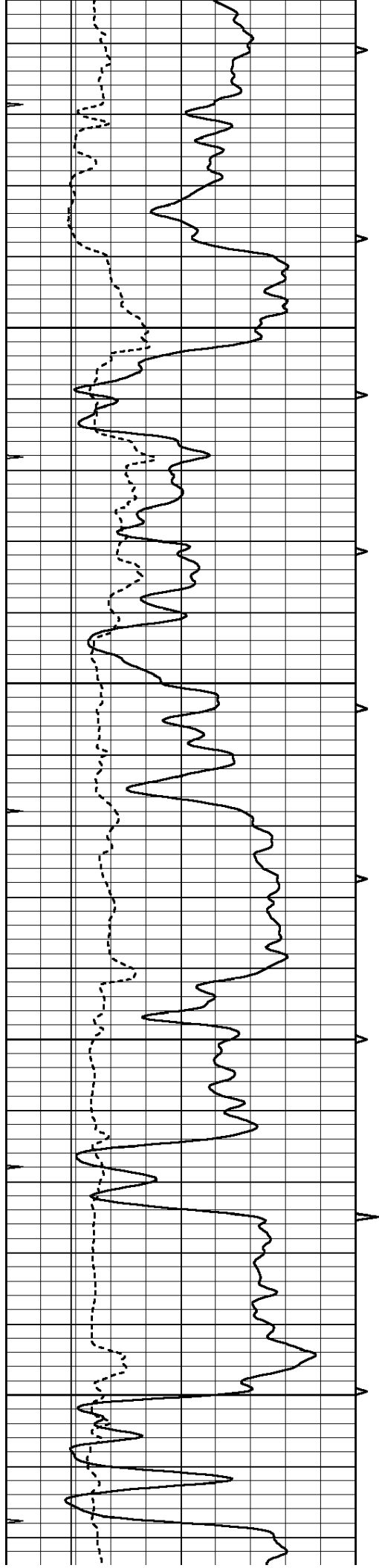


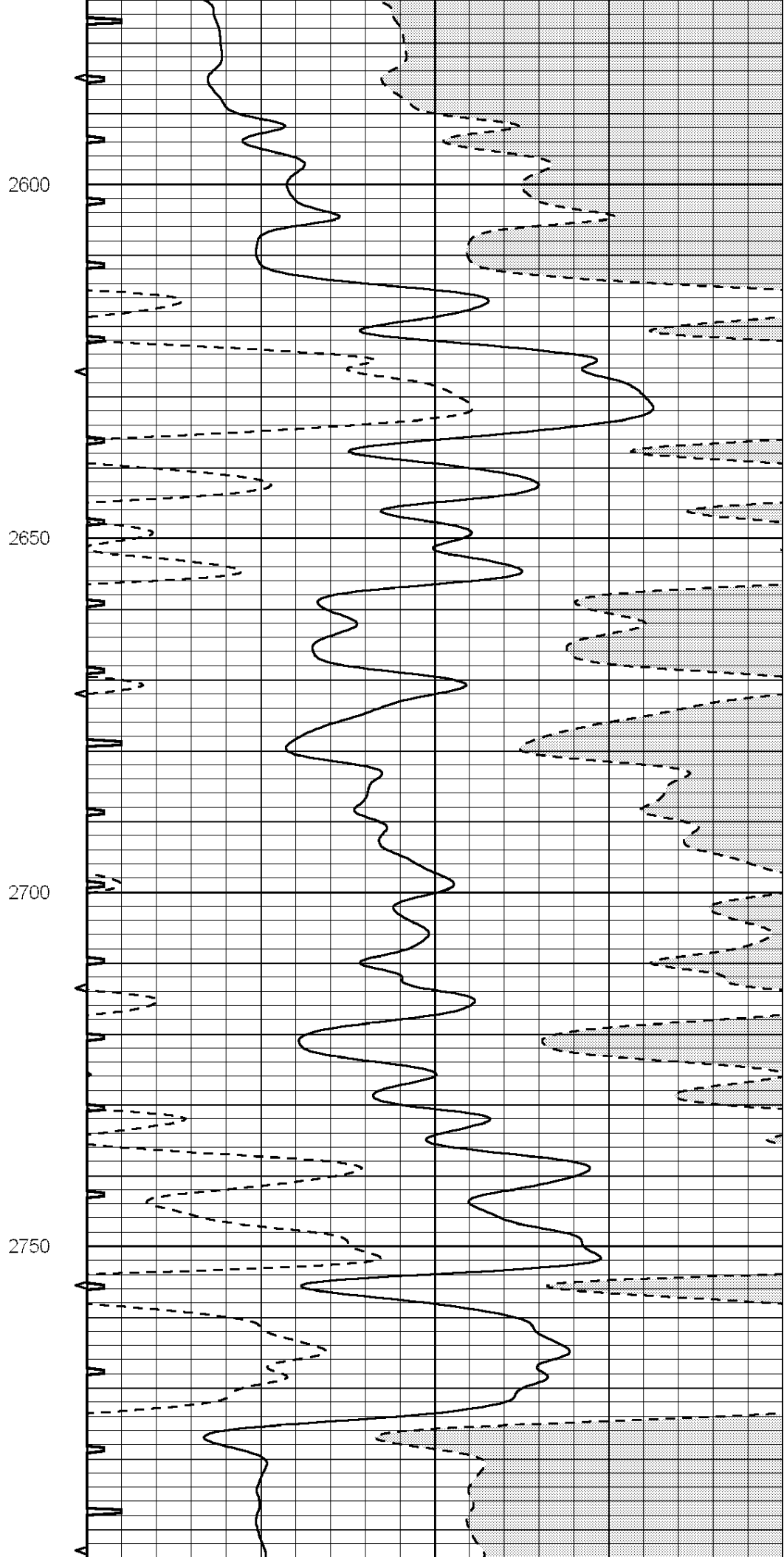
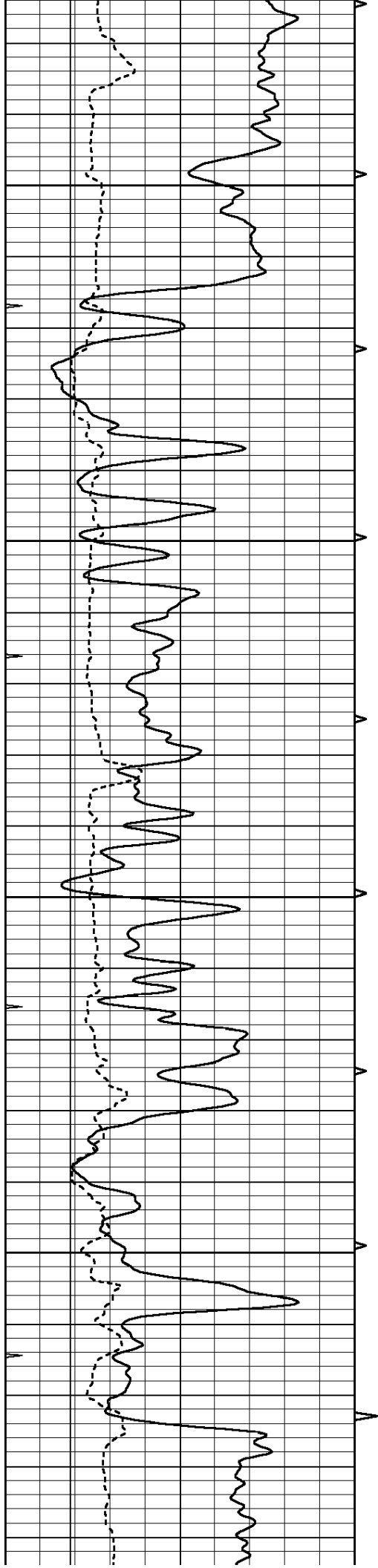


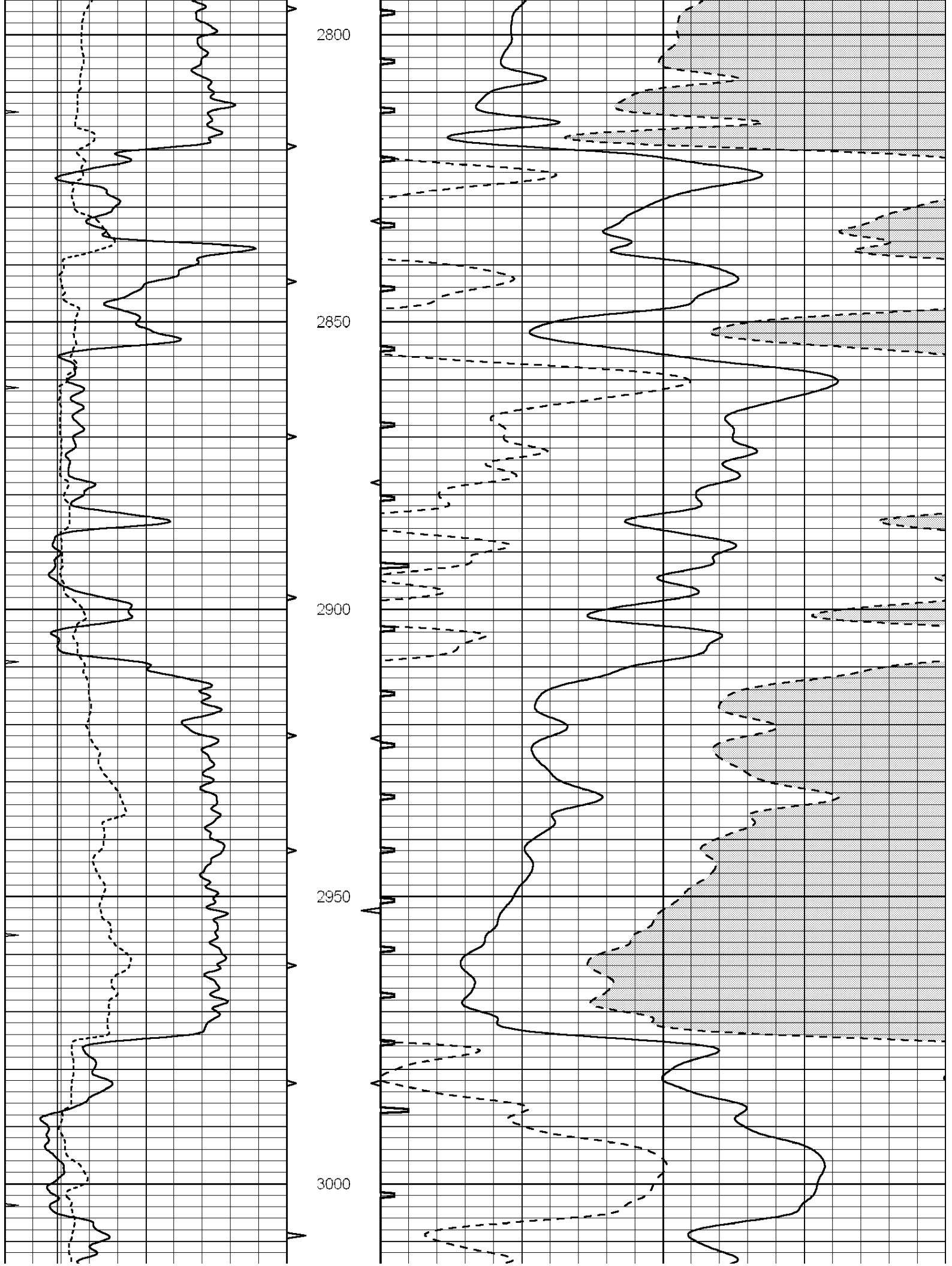


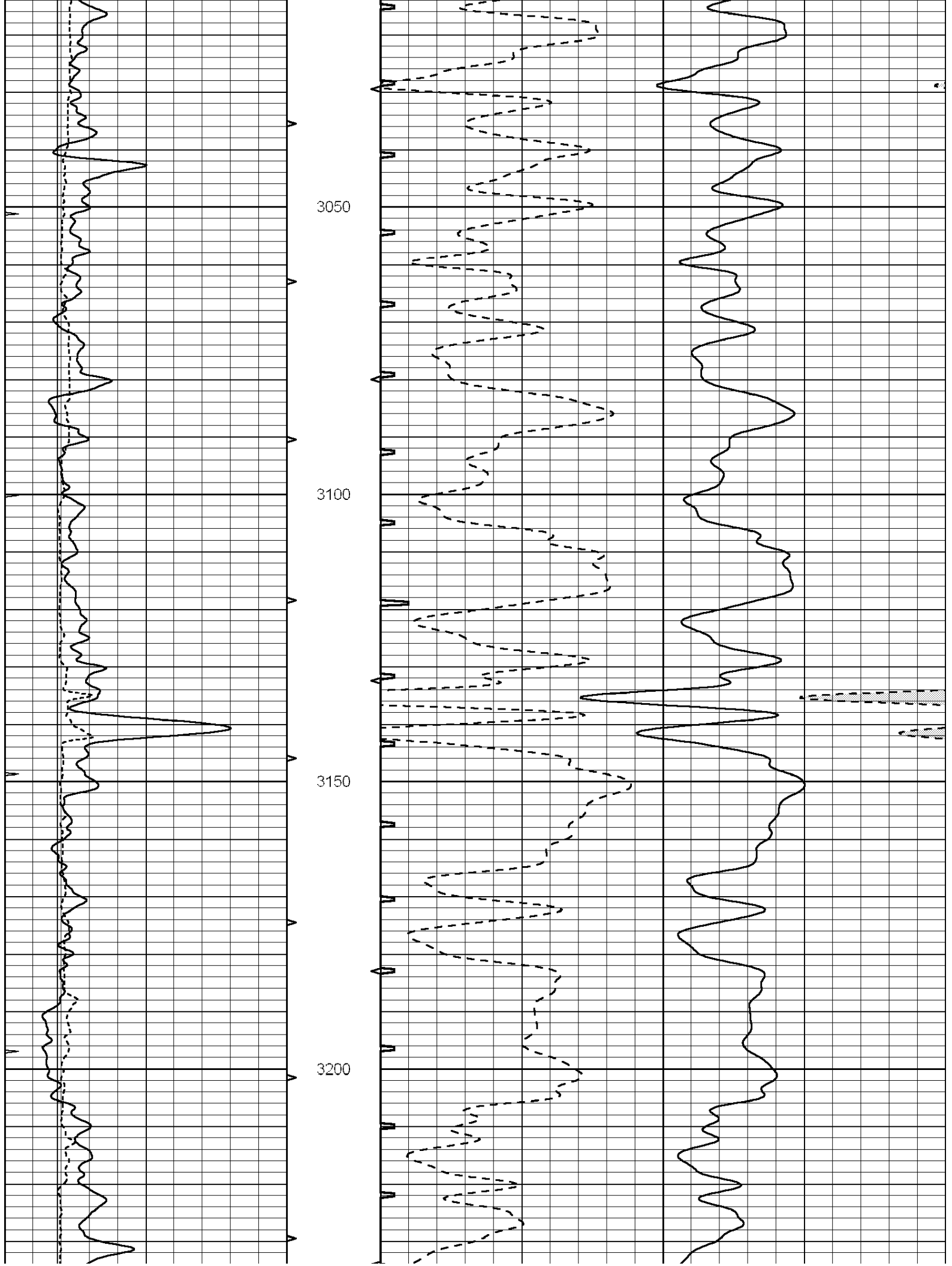


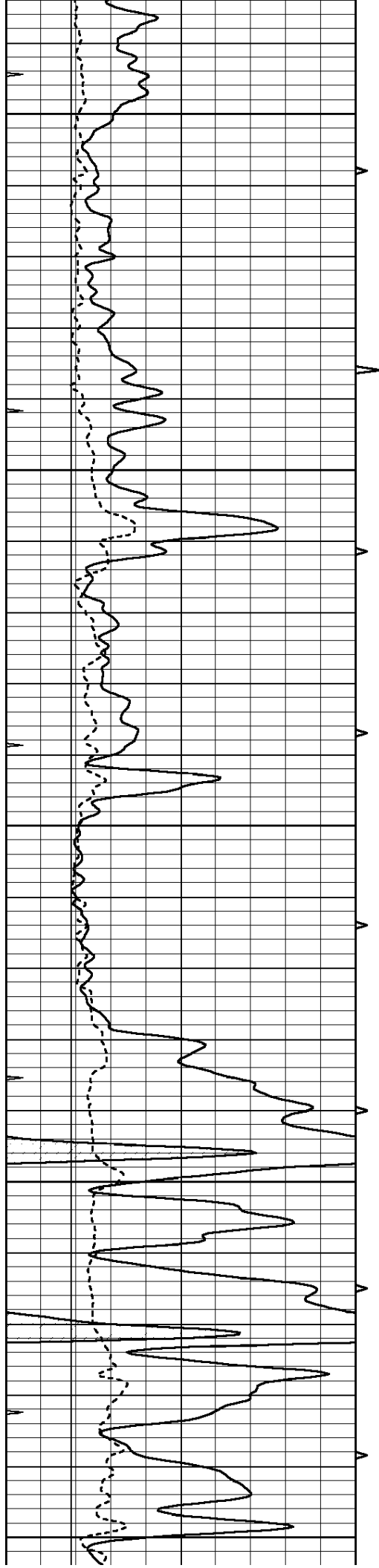












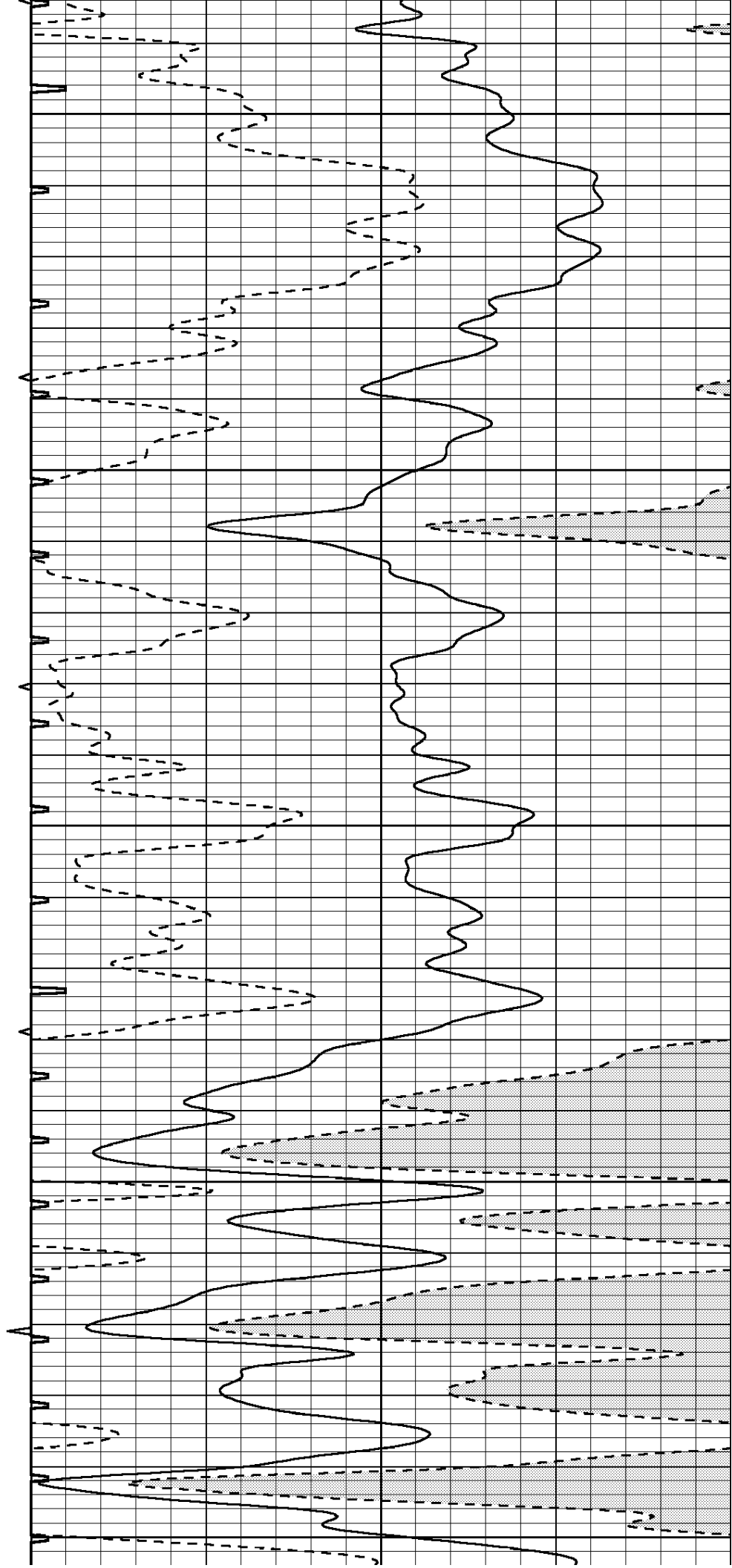
3250

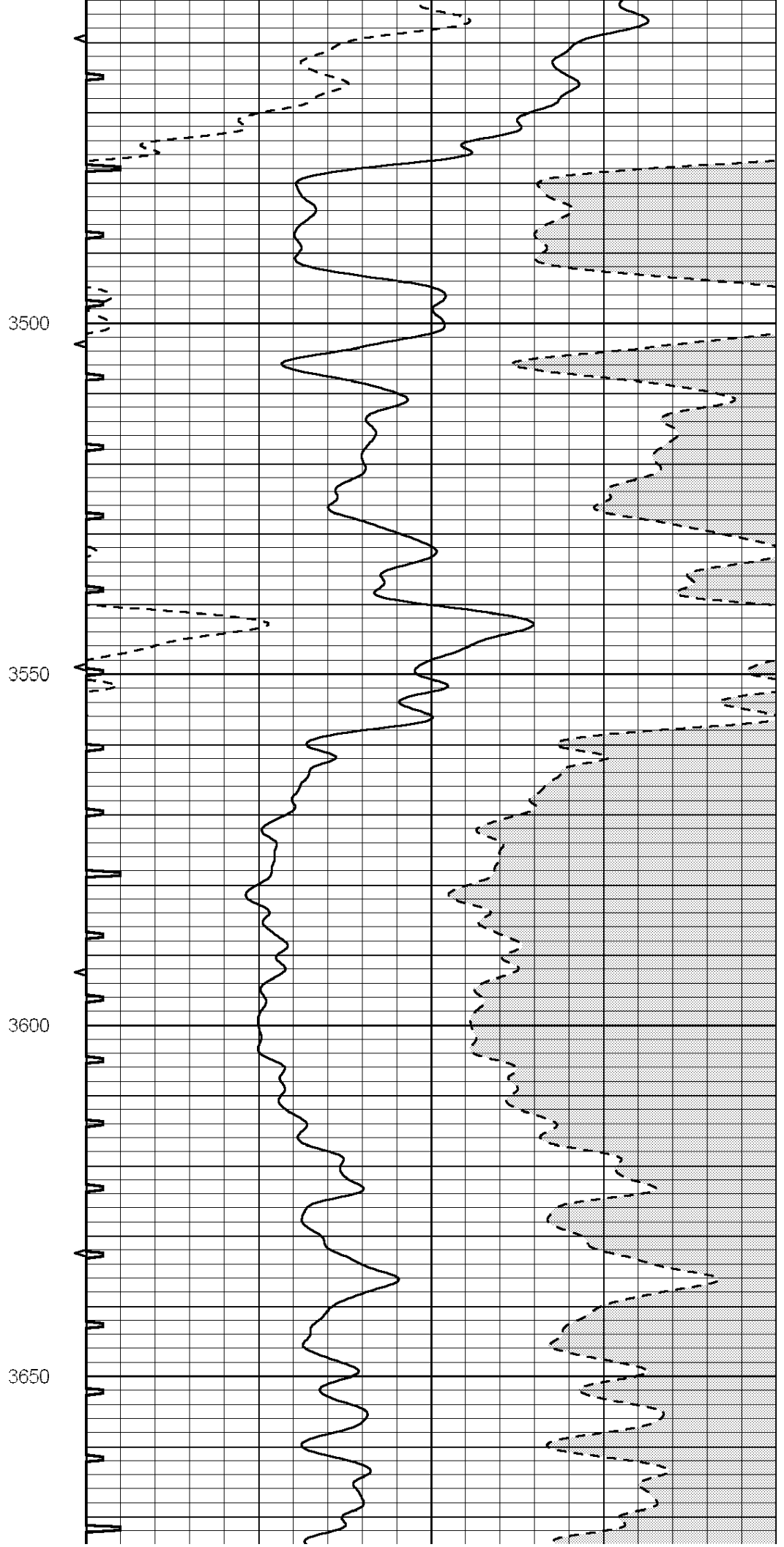
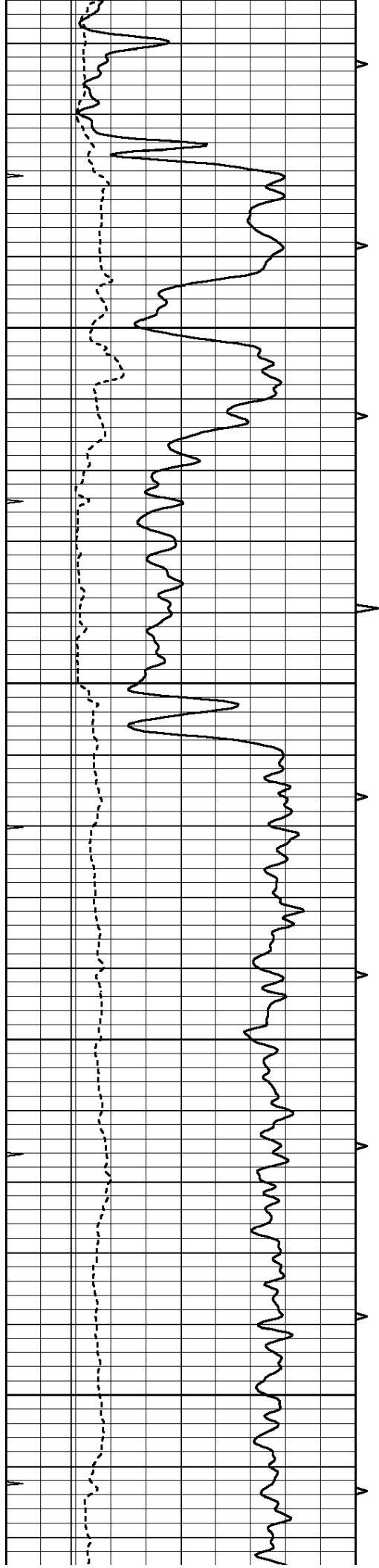
3300

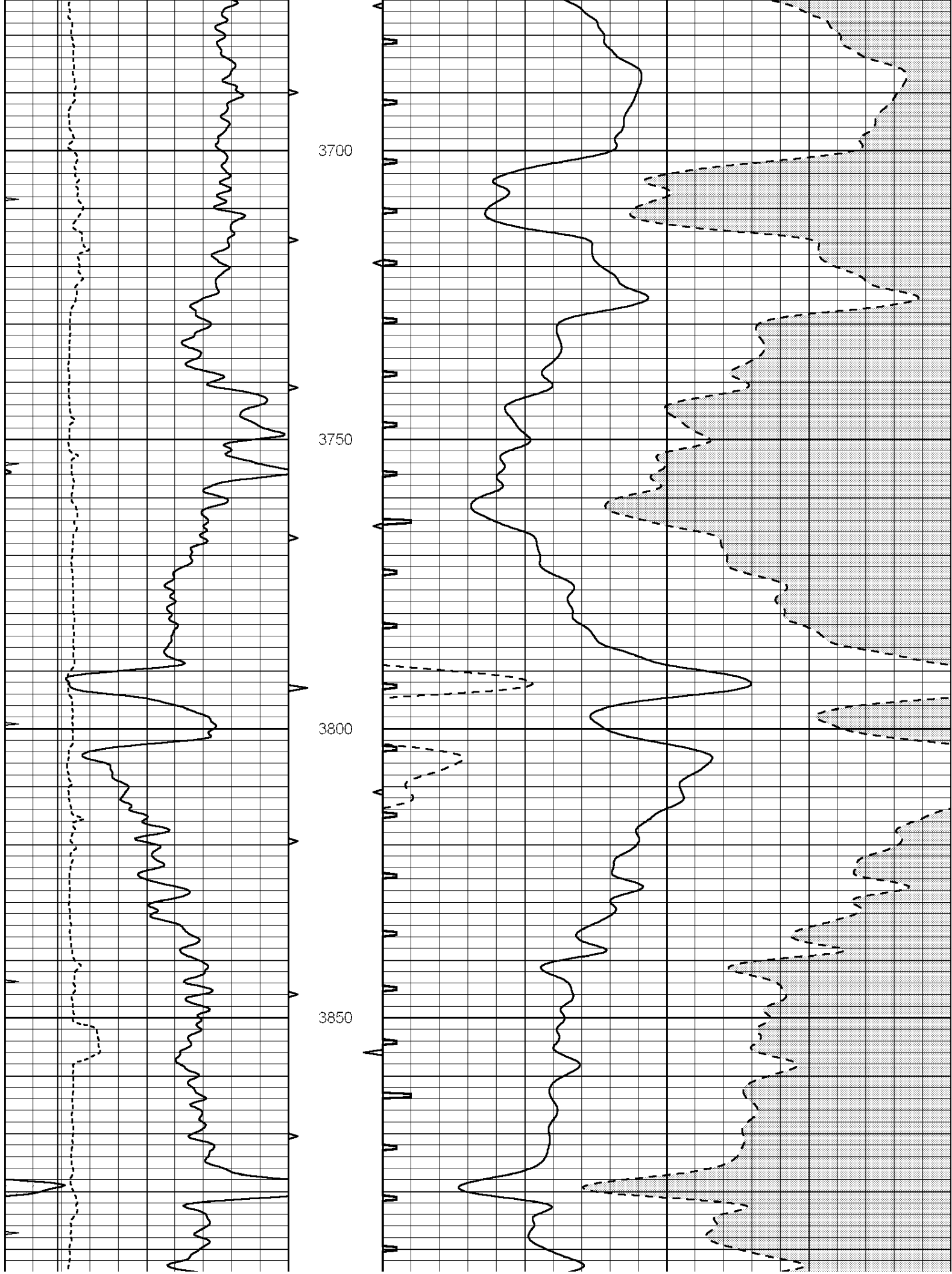
3350

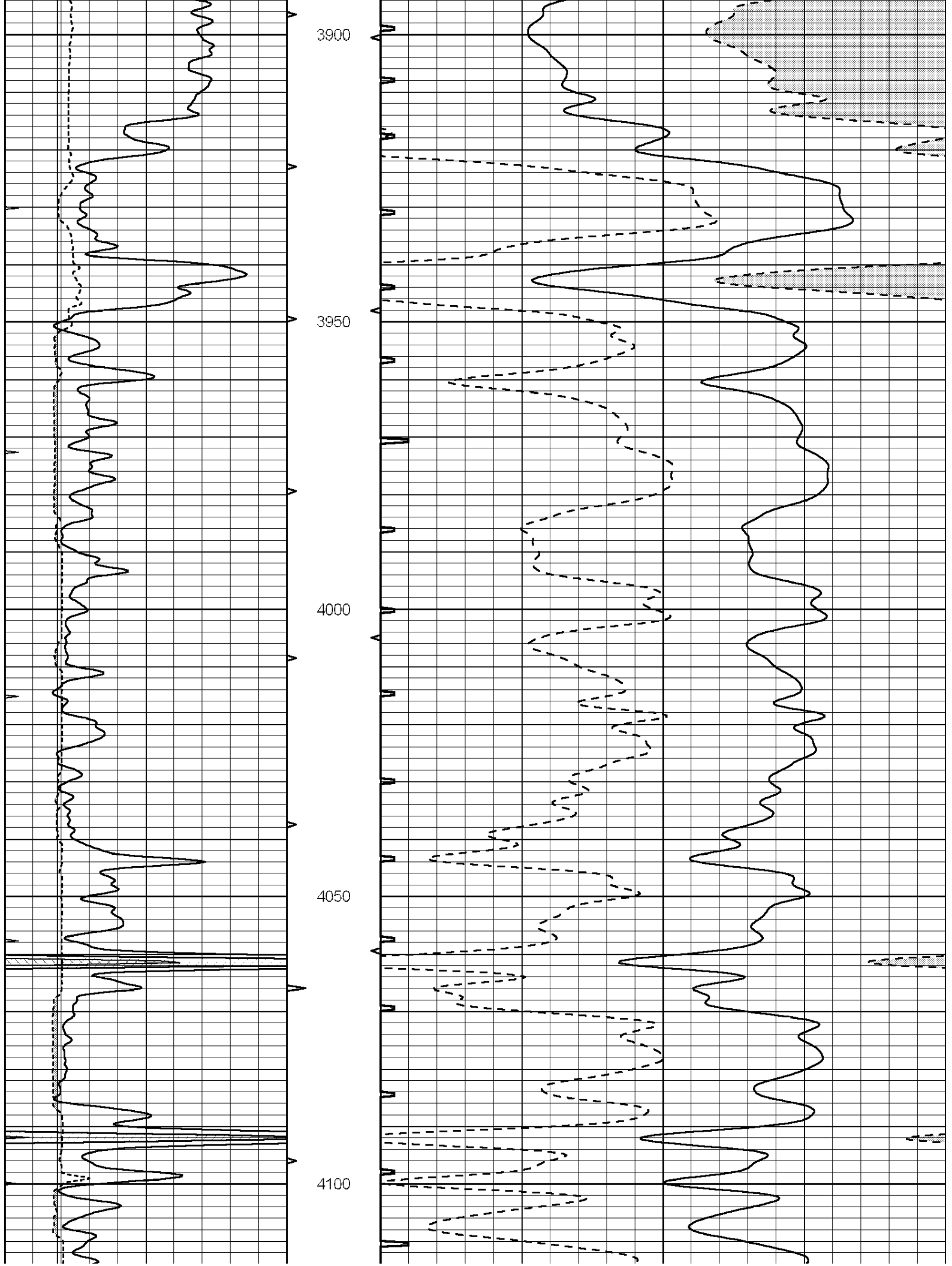
3400

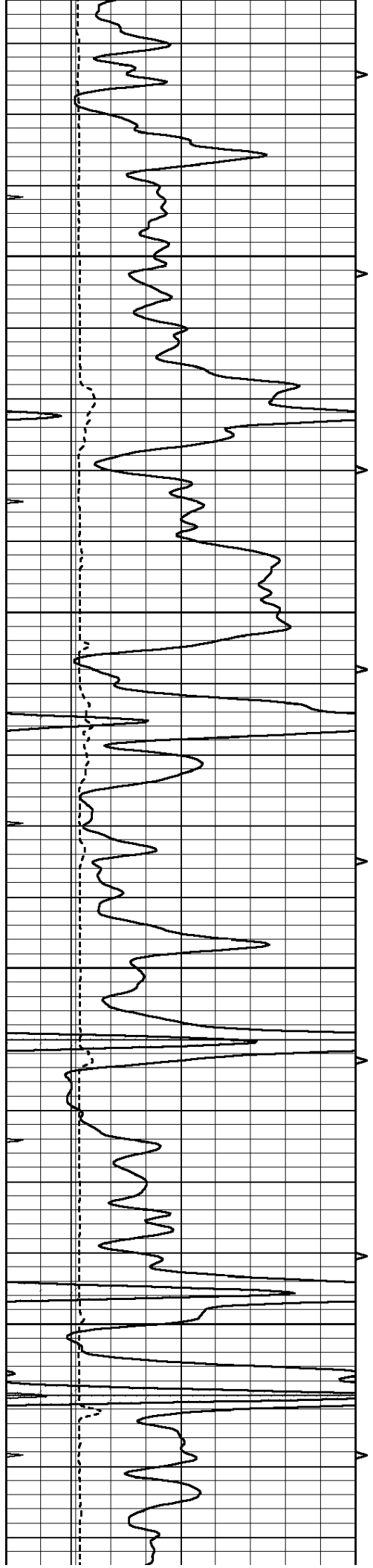
3450









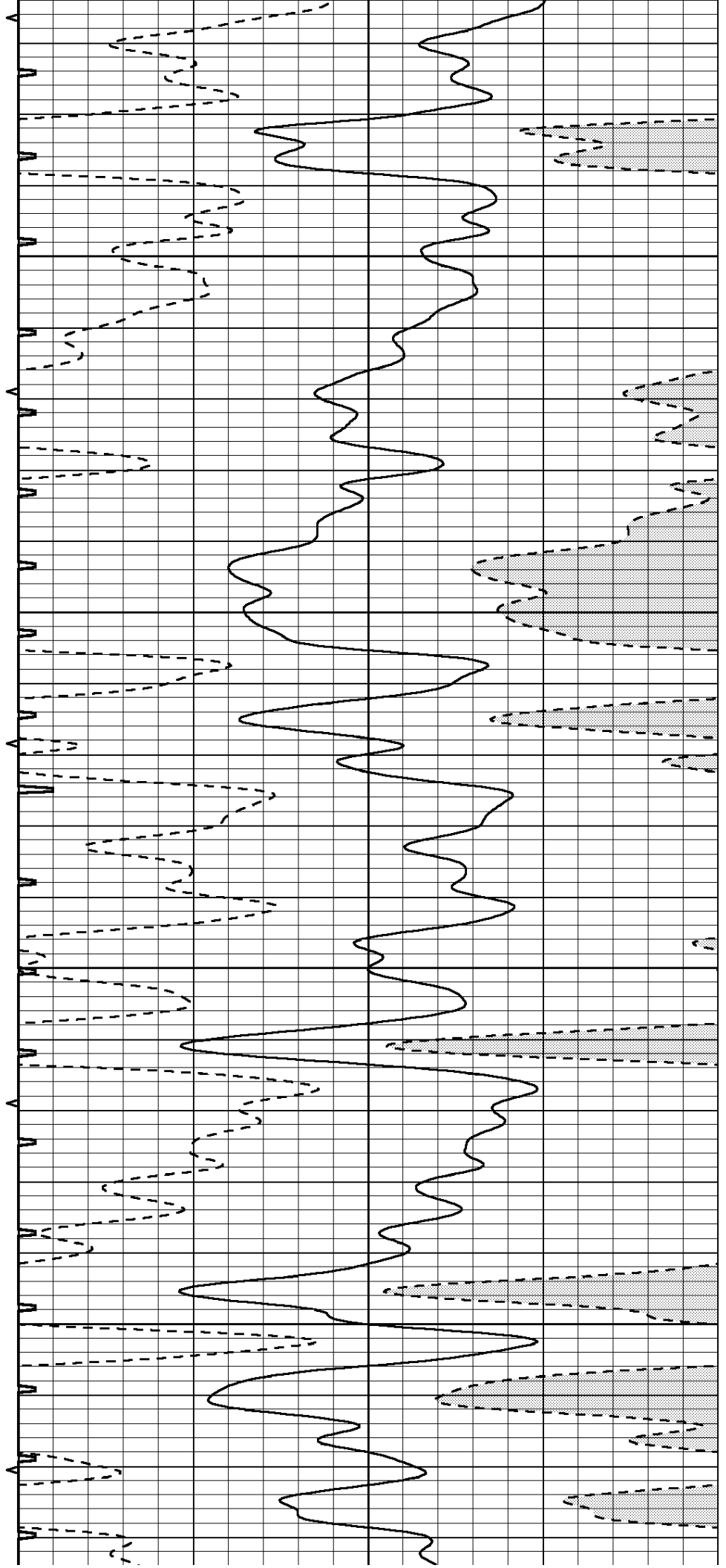


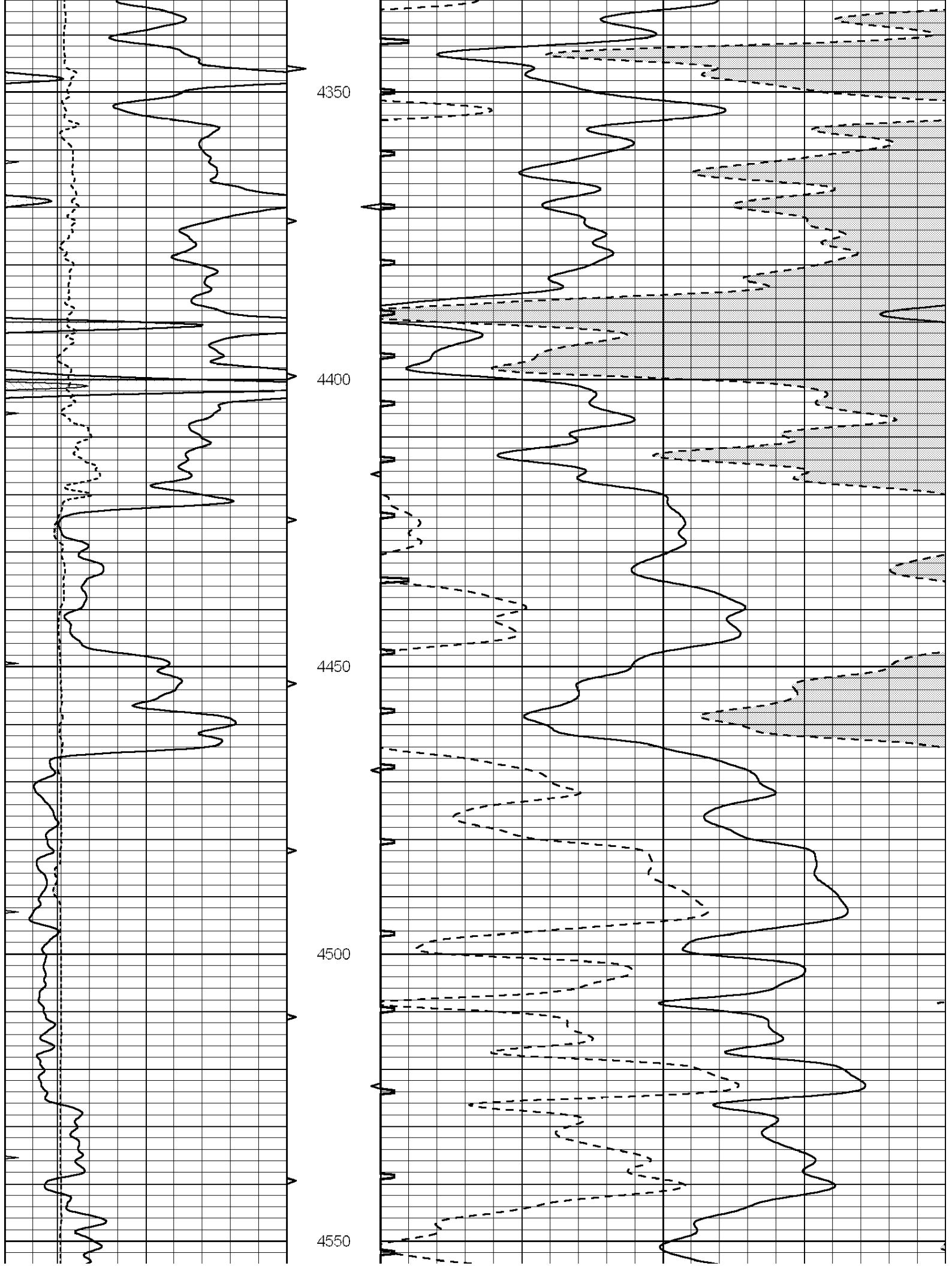
4150

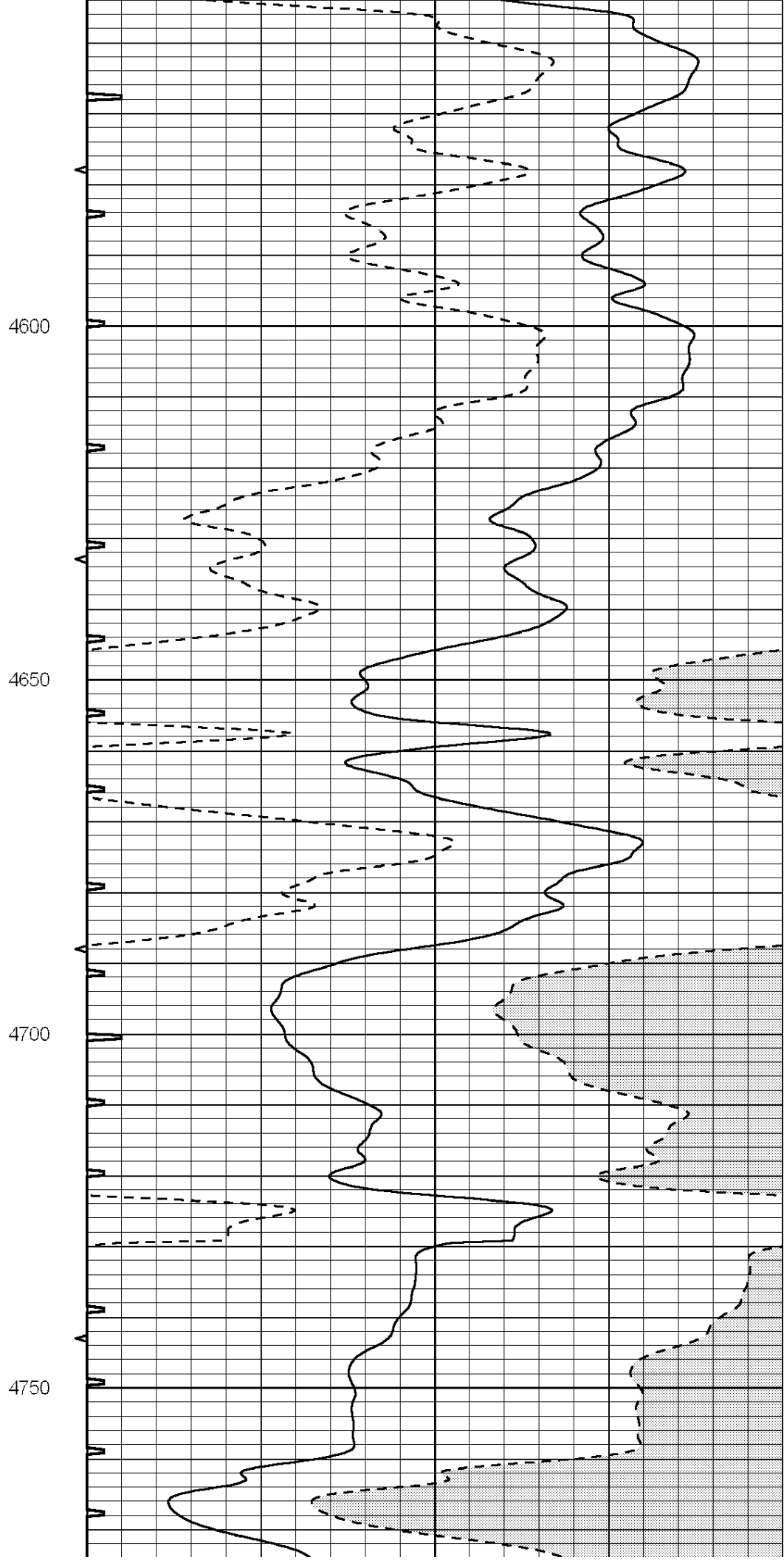
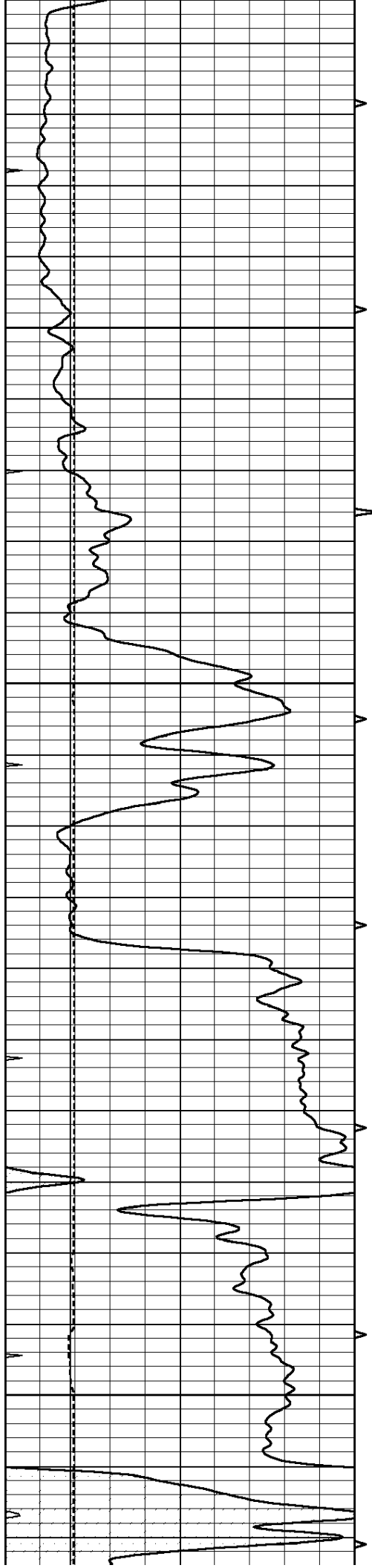
4200

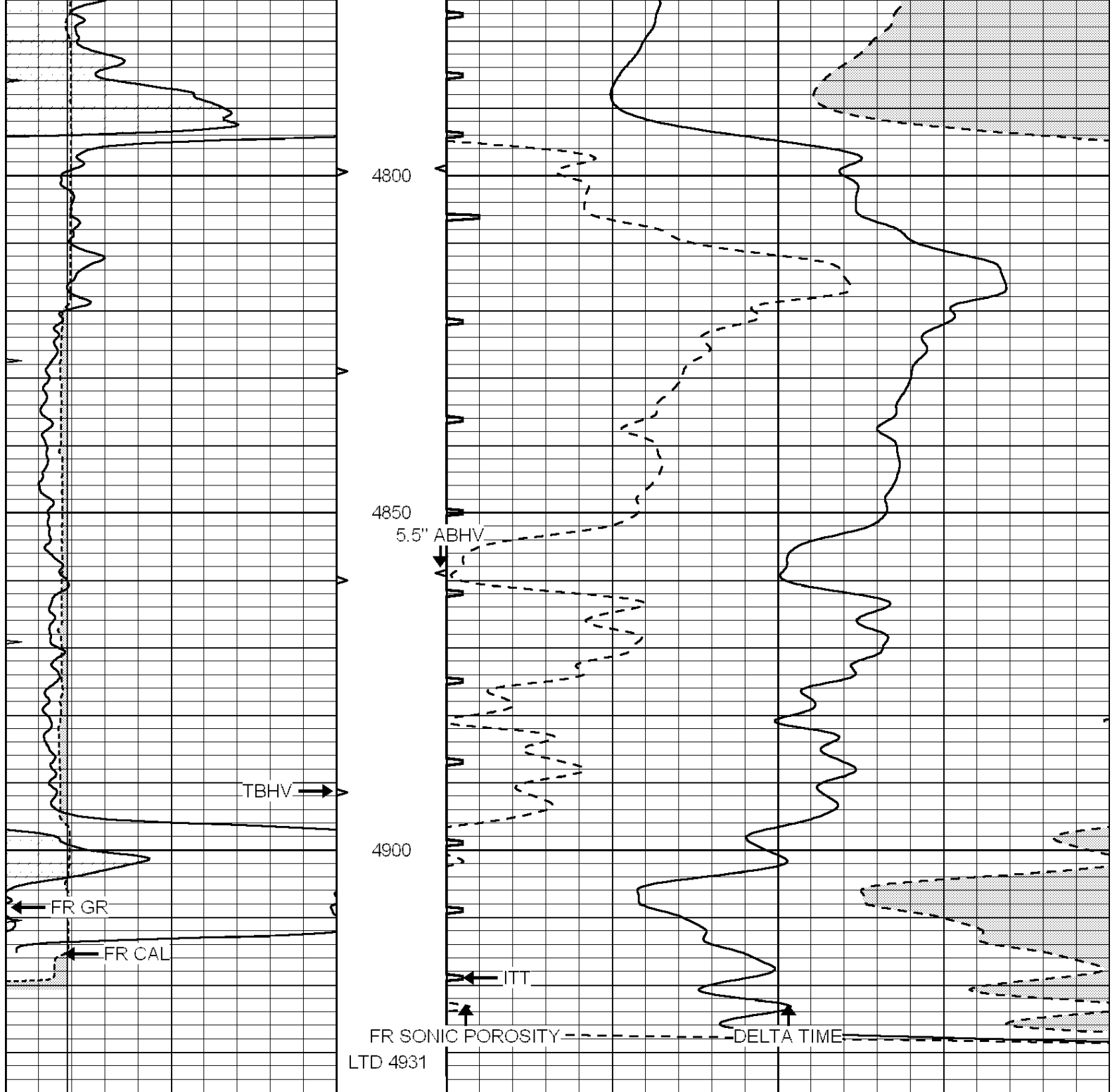
4250

4300

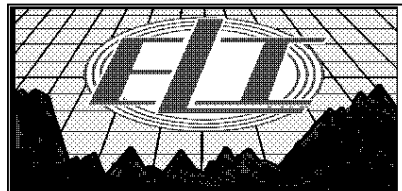








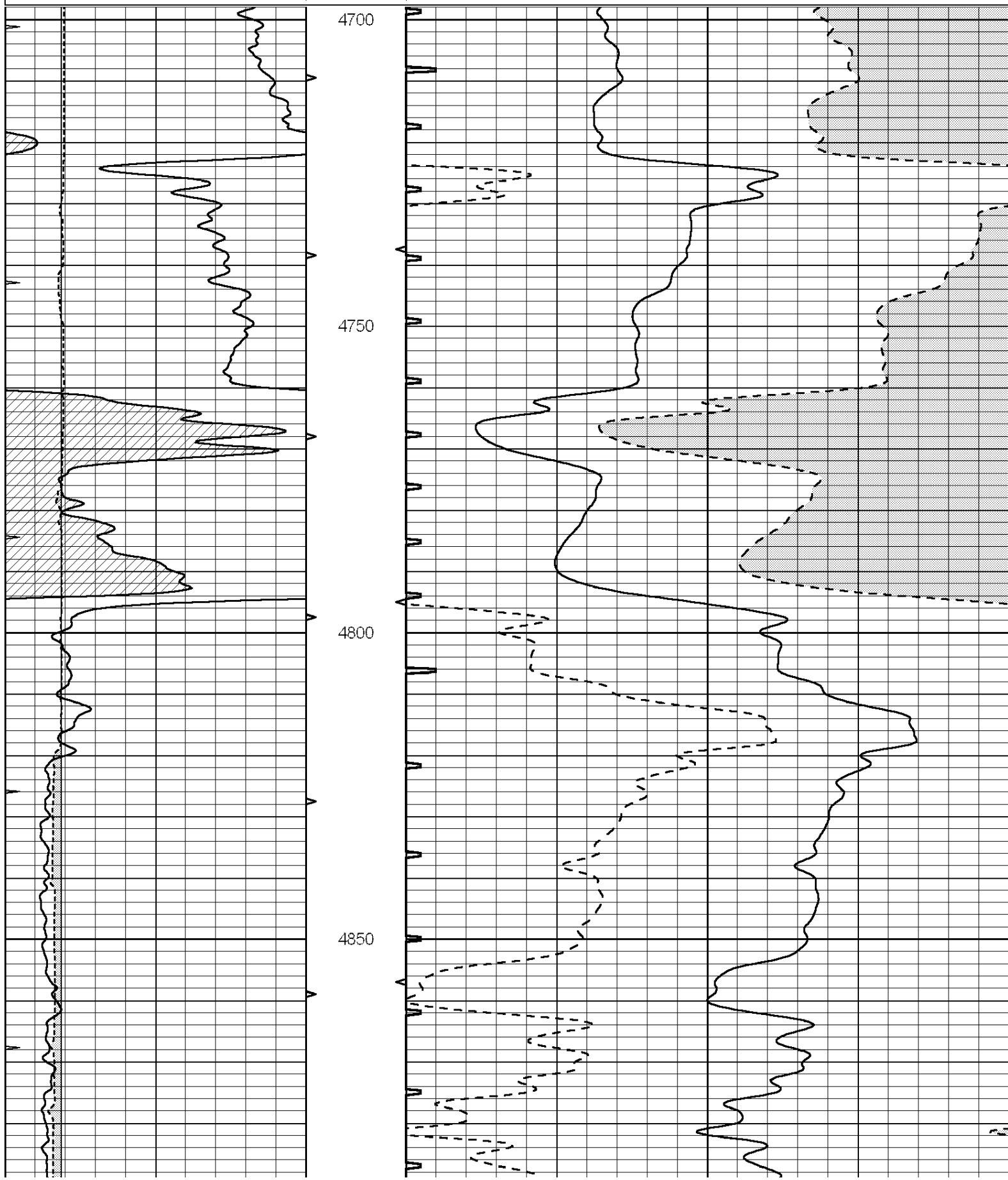
0	GAMMA RAY (GAPI)	150	ABHV	140	DELTA TIME (usec/ft)	40	
6	CALIPER (in)	16	10 (ft3)	0	30	SONIC POROSITY (pu)	-10
0	MINMK	20	TBHV	0	ITT (msec)	20	
			0 (ft3)	10			

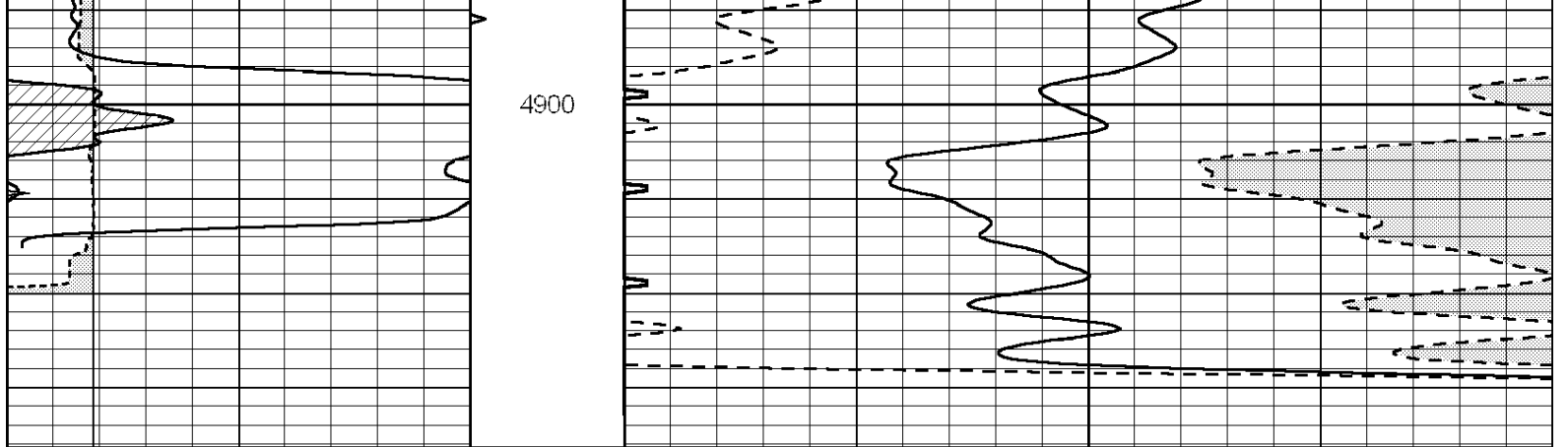


REPEAT SECTION

Database File: 2950pe.db
 Dataset Pathname: pass5.2
 Presentation Format: slt

0	GAMMA RAY (GAPI)	150	ABHV	140	DELTA TIME (usec/ft)	40
6	CALIPER (in)	16	10 (ft3)	0 30	SONIC POROSITY (pu)	-10
0	MINMK	20	TBHV	0	ITT (msec)	20
			0 (ft3)	10		





0	GAMMA RAY (GAPI)	150	ABHV	140	DELTA TIME (usec/ft)	40
6	CALIPER (in)	16	10 (ft3) 0	30	SONIC POROSITY (pu)	-10
0	MINMK	20	TBHV	0	ITT (msec)	20
			0 (ft3) 10			