



**DUAL  
INDUCTION  
LOG**

**Company** Bickle Energies, LLC.

**Well** Avery #14-1

**Field** Unnamed

**County** Cheyenne **State** Kansas

**Location:** API #: 15 023 21488

SEC 14 TWP 5S RGE 37W

1335' FSL & 1645' FEL

Permanent Datum Ground Level Elevation 3333'  
 Log Measured From KB 5' AGL  
 Drilling Measured From KB

Other Services  
 CDNL  
 ML  
 BCS  
 Elevation  
 K.B. 3338'  
 D.F. 3337'  
 G.L. 3333'

Date	6-29-18
Run Number	One
Depth Driller	4950'
Depth Logger	4955'
Bottom Logged Interval	4953'
Top Log Interval	330'
Casing Driller	8 5/8" @ 349'
Casing Logger	349'
Bit Size	7 7/8"
Type Fluid in Hole	Chemical
Density / Viscosity	9.5/53
PH / Fluid Loss	9.5/7.6
Source of Sample	Pit
Rm @ Meas. Temp	.8@88degf
Rmf @ Meas. Temp	0.6@88degf
Rmc @ Meas. Temp	1.0@88degf
Source of Rmf / Rmc	Calculated
Rm @ BHT	0.53@134degf
Time Circulation Stopped	12:00 p.m
Time Logger on Bottom	2:30 p.m
Maximum Recorded Temperature	134degf
Equipment Number	T-127
Location	Hays, KS.
Recorded By	C.Patterson
Witnessed By	Mr. Kleth Reavis

<<< Fold Here >>>

All interpretations are opinions based on inferences from electrical or other measurements and we cannot and do not guarantee the accuracy or correctness of any interpretation, and we shall not, except in the case of gross or willful negligence on our part, be liable or responsible for any loss, costs, damages, or expenses incurred or sustained by anyone resulting from any interpretation made by any of our officers, agents or employees. These interpretations are also subject to our general terms and conditions set out in our current Price Schedule.

**Comments**

North Of Brewster,KS to EE Rd., West EE Rd. 3 mi. to 34 Rd., Then North on 34 Rd. 3 1/4 mi.  
 West Into Location

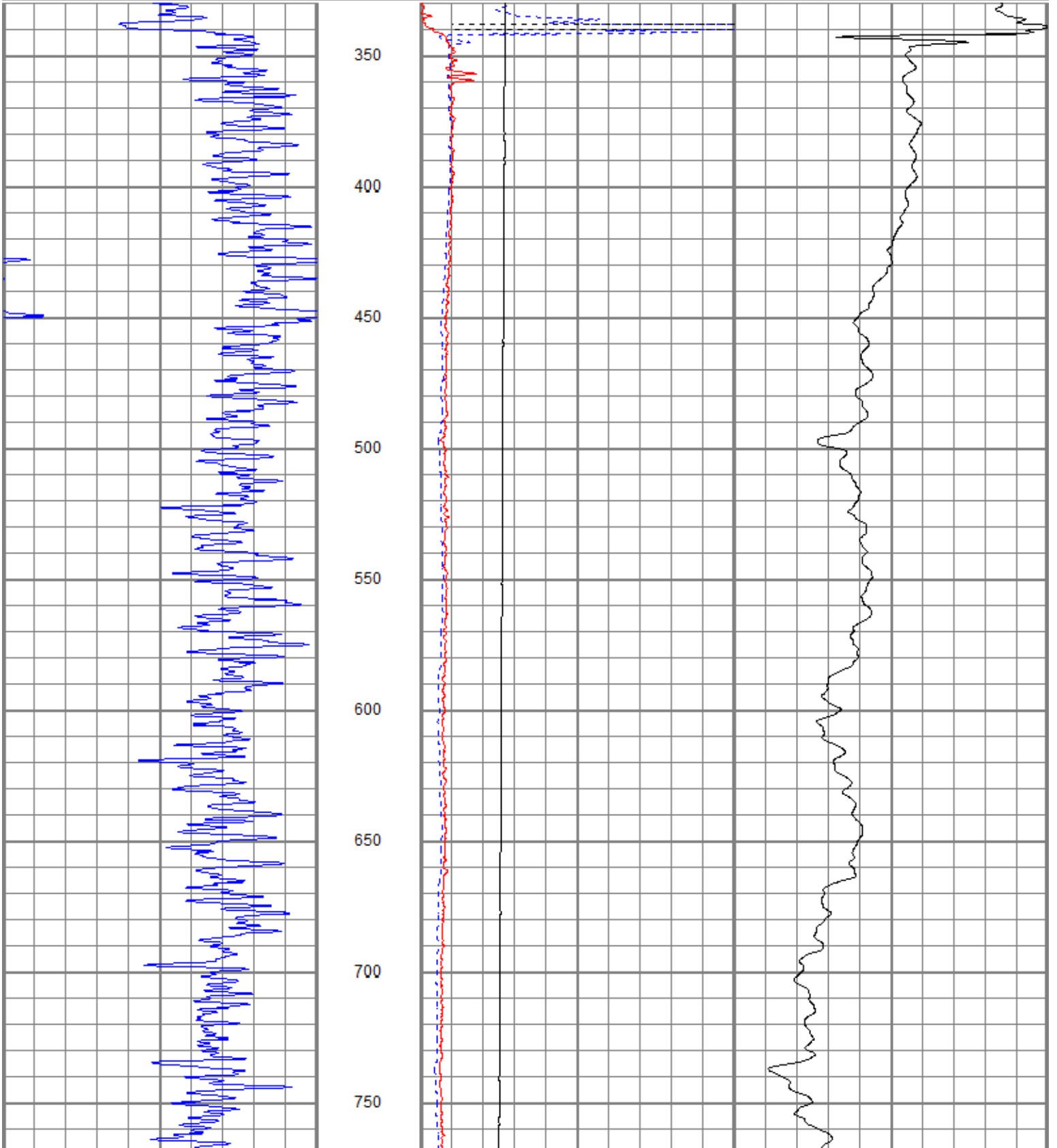
Thanks for using Gemini Wireline LLC  
 785-625-1182

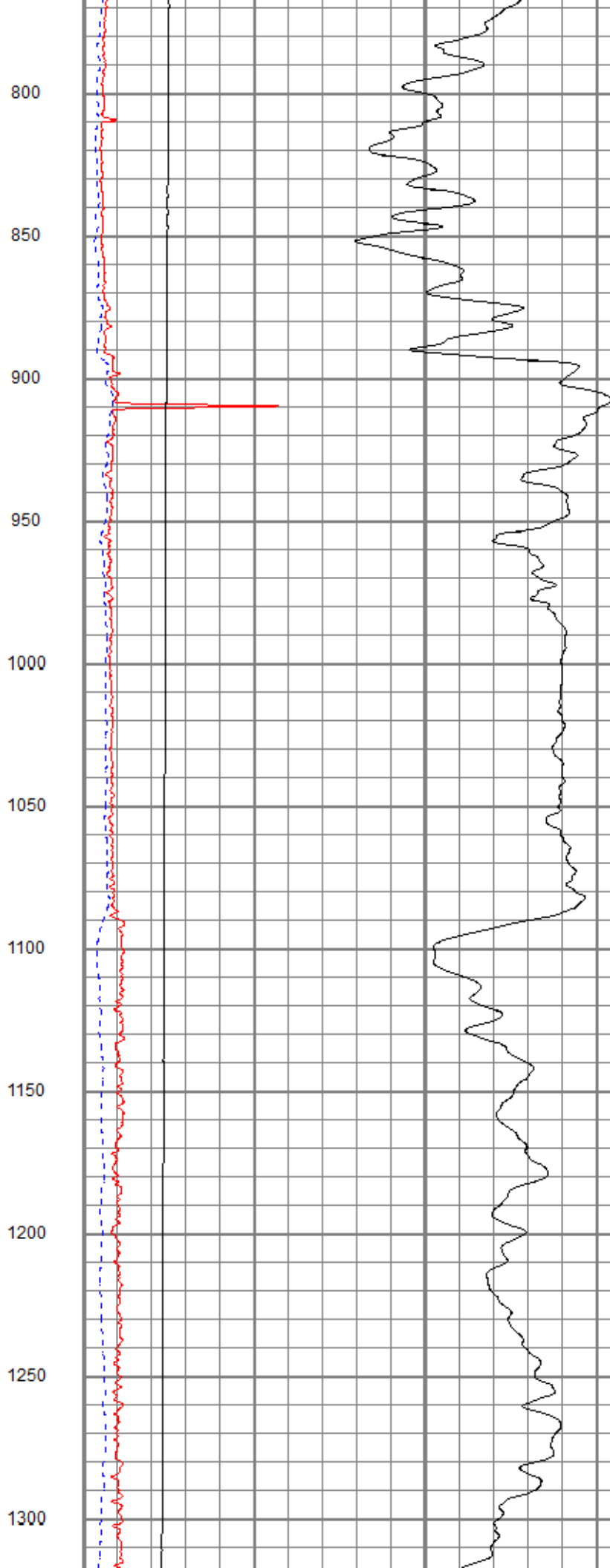
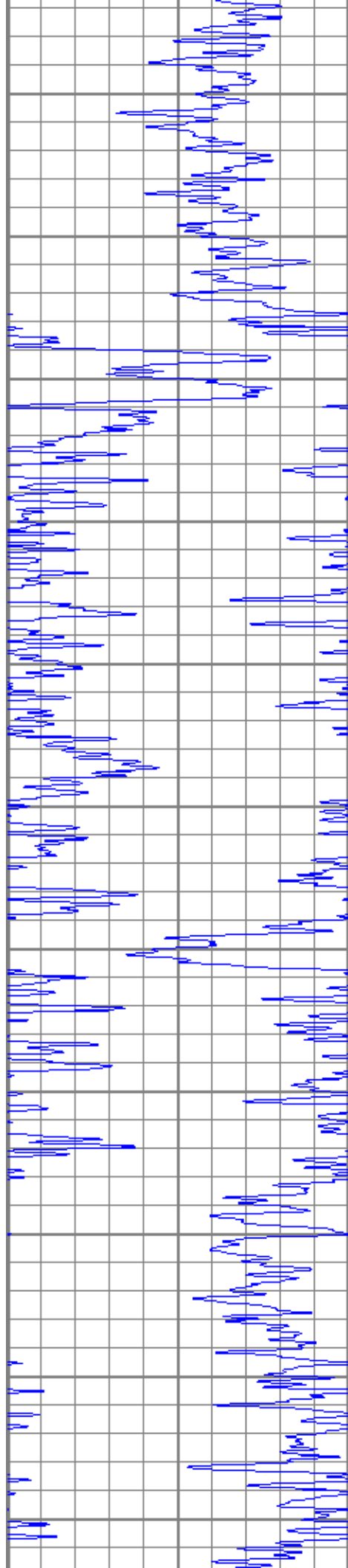


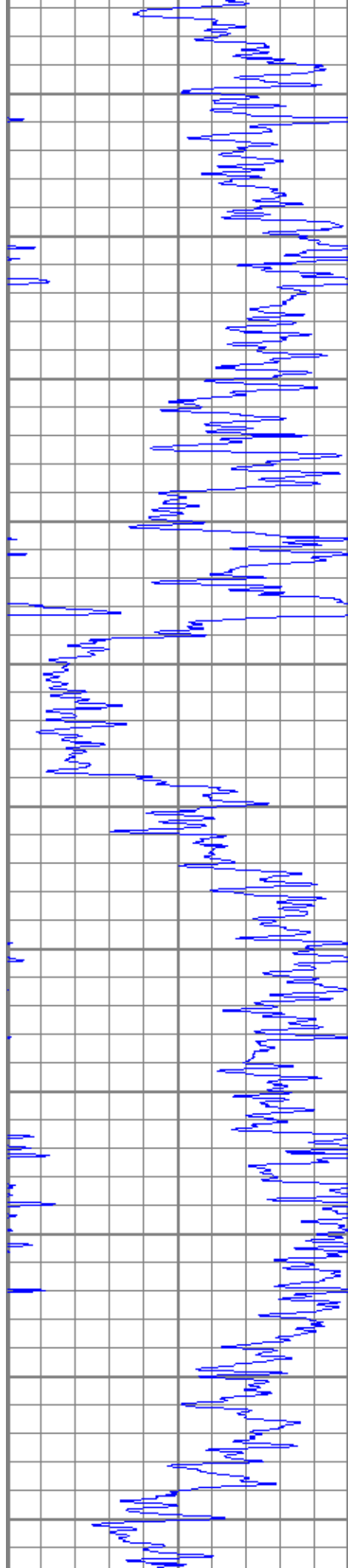
**MAIN PASS**

Database File beavery#14-10h.db  
 Dataset Pathname pass2  
 Presentation Format kdi11n  
 Dataset Creation Fri Jun 29 14:37:46 2018  
 Charted by Depth in Feet scaled 1:600

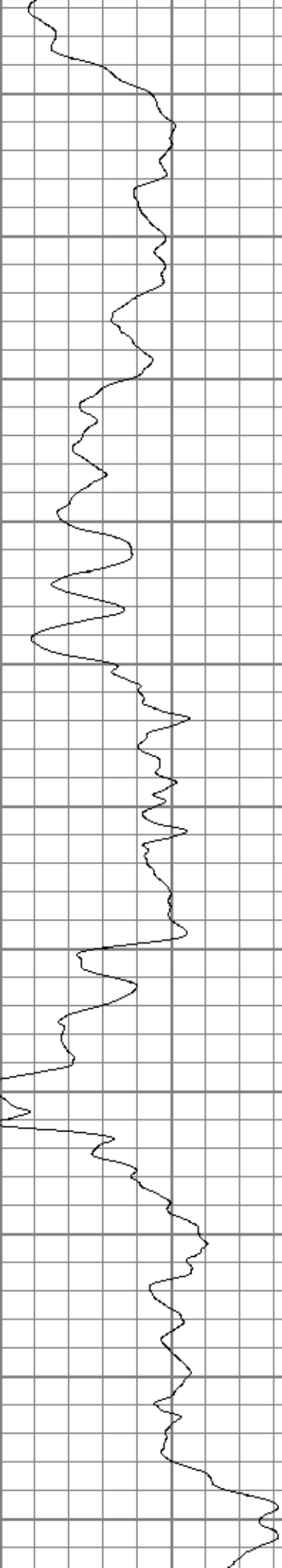
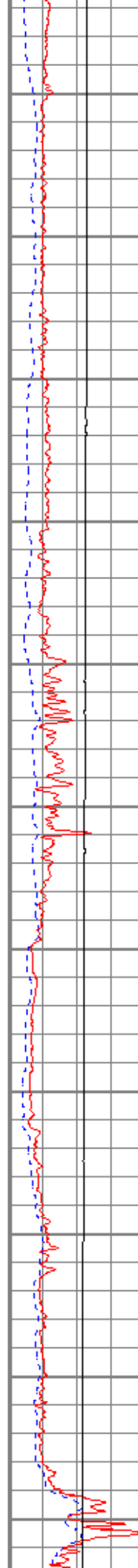
0	GR (GAPI)	150	1000	CILD (mmho/m)	0
			10000	LTEN (lb)	0
0	RILD (Ohm-m)	50			
0	RLL3 (Ohm-m)	50			
50	RILD x 10 (Ohm-m)	500			
50	RLL3 x 10 (Ohm-m)	500			

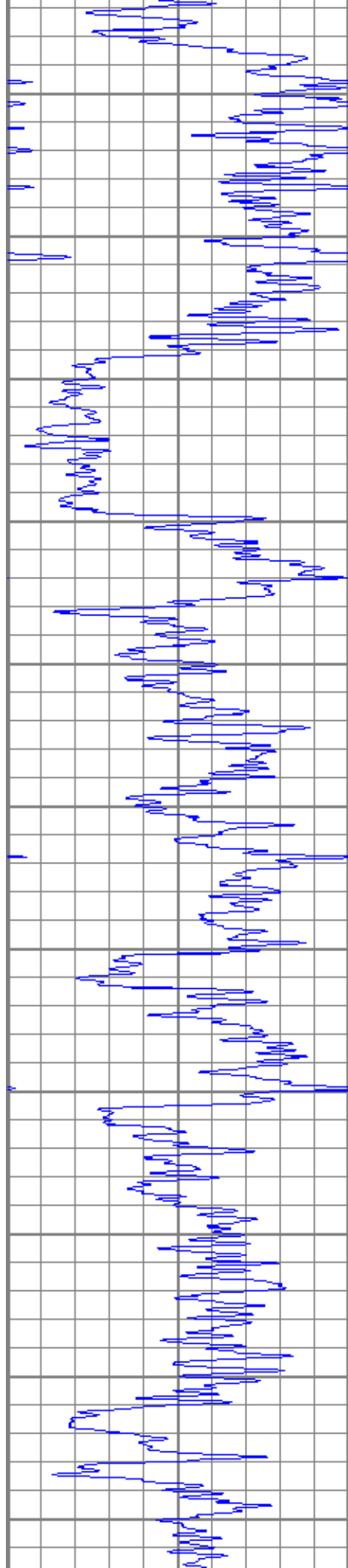




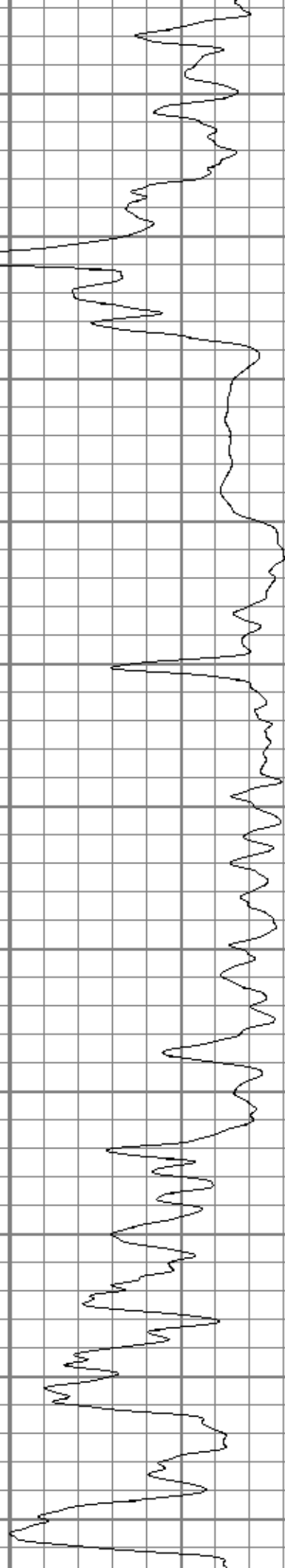
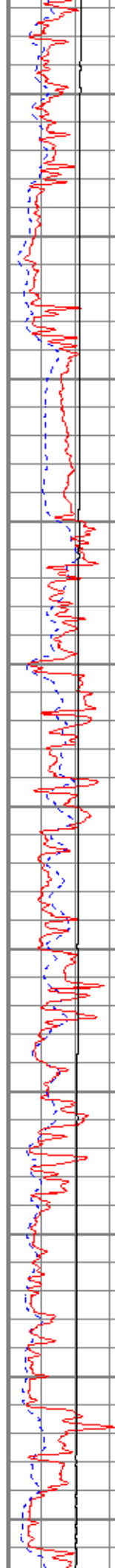


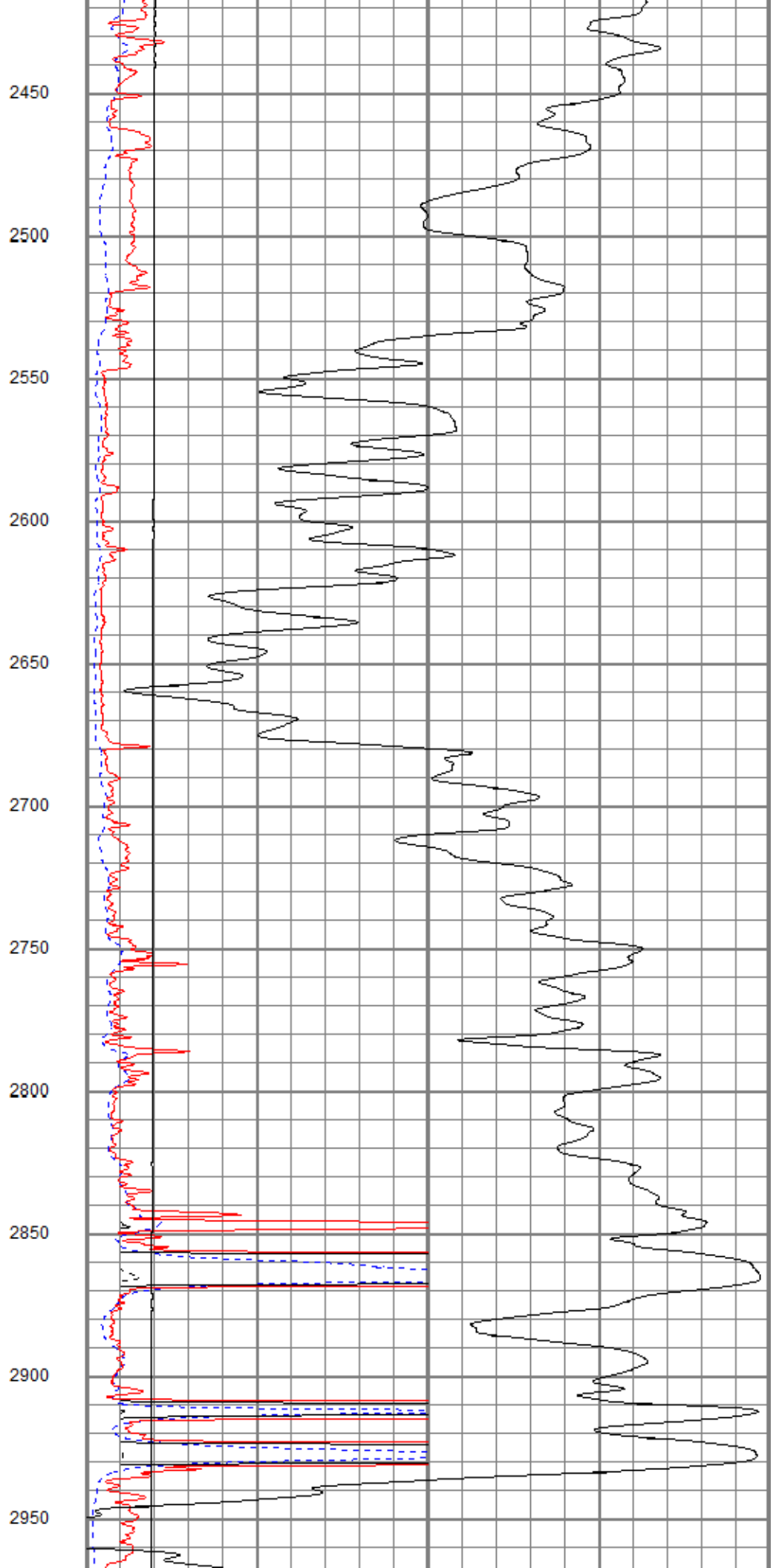
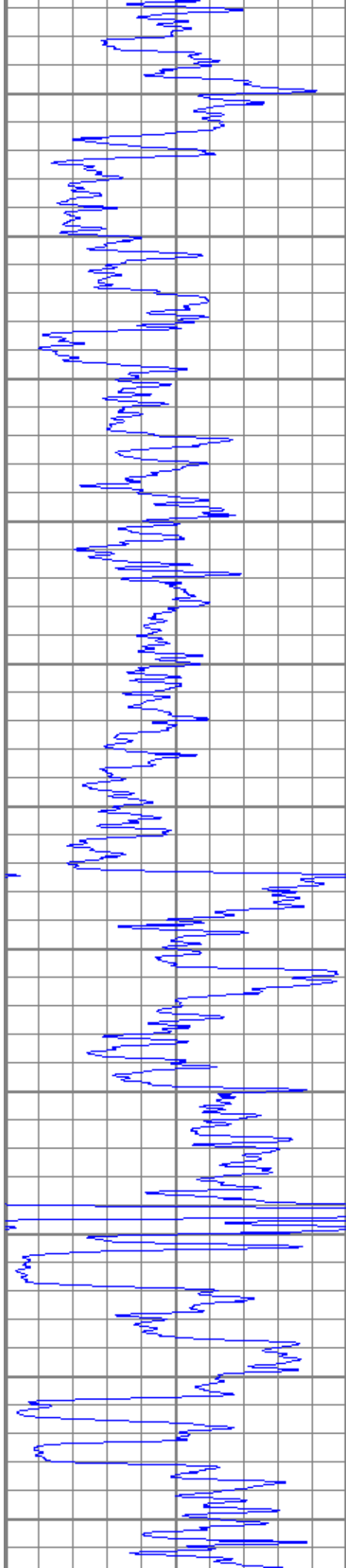
1350  
1400  
1450  
1500  
1550  
1600  
1650  
1700  
1750  
1800  
1850

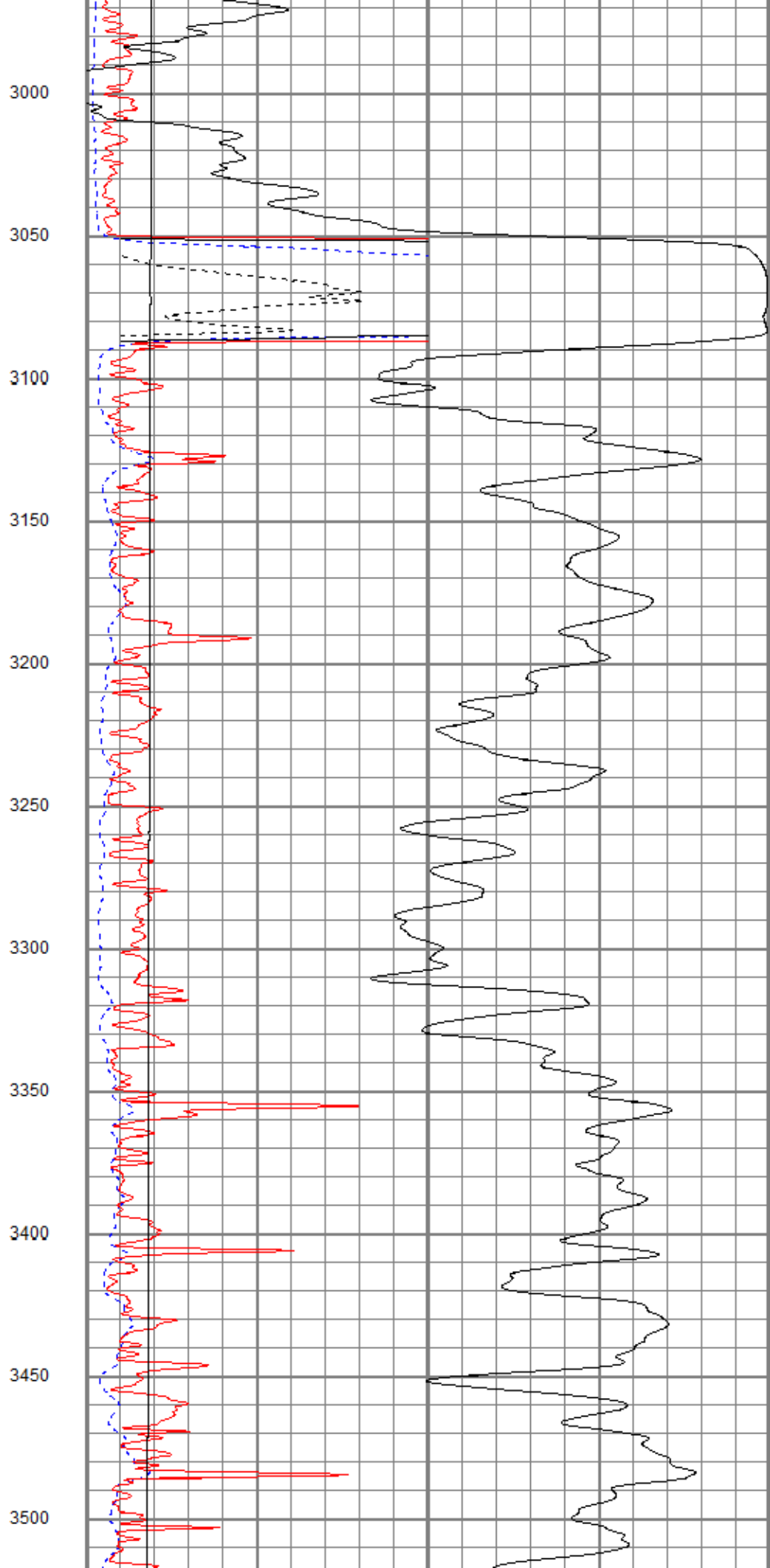
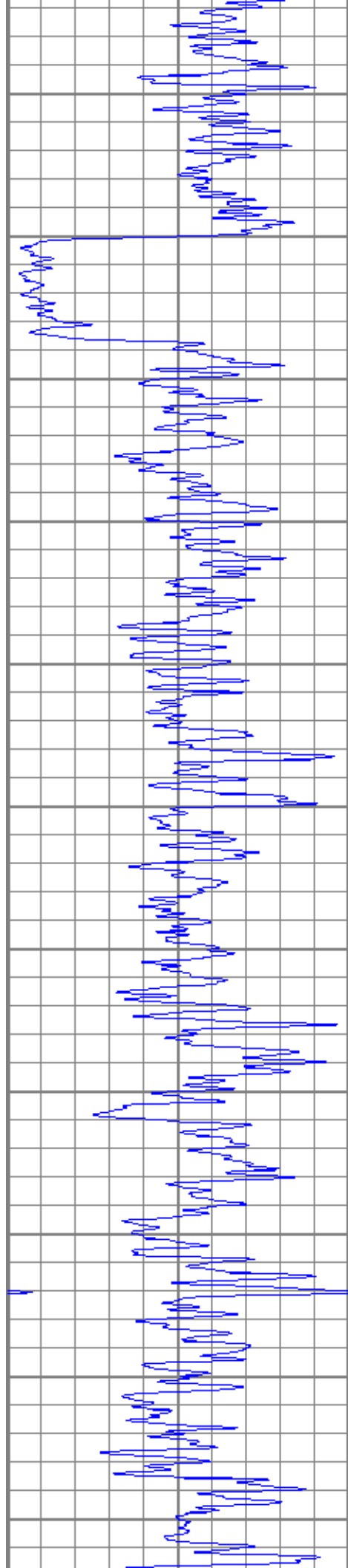


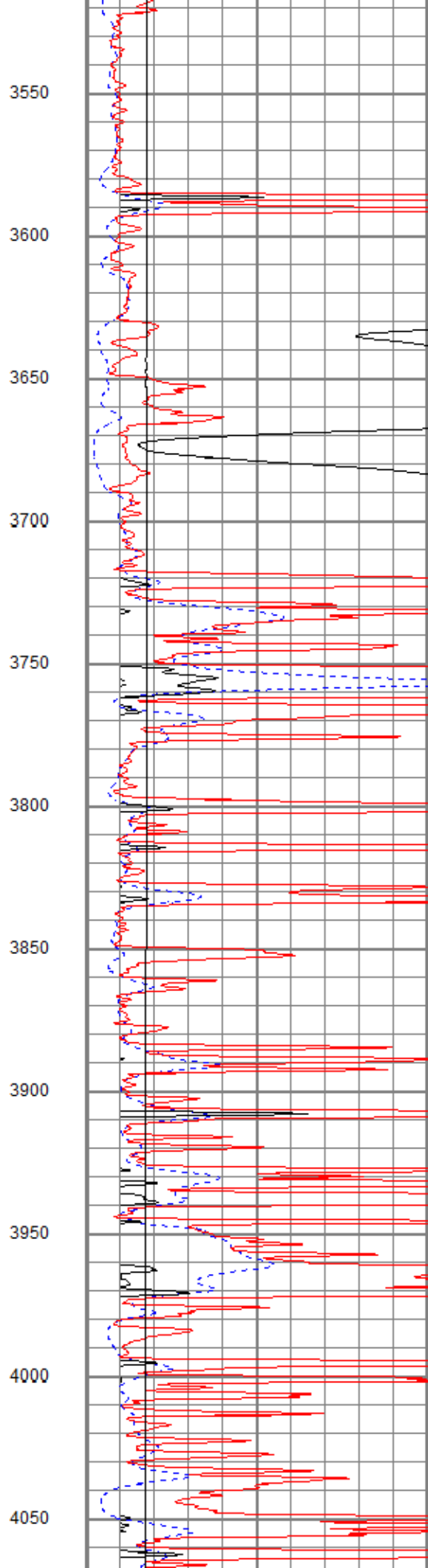
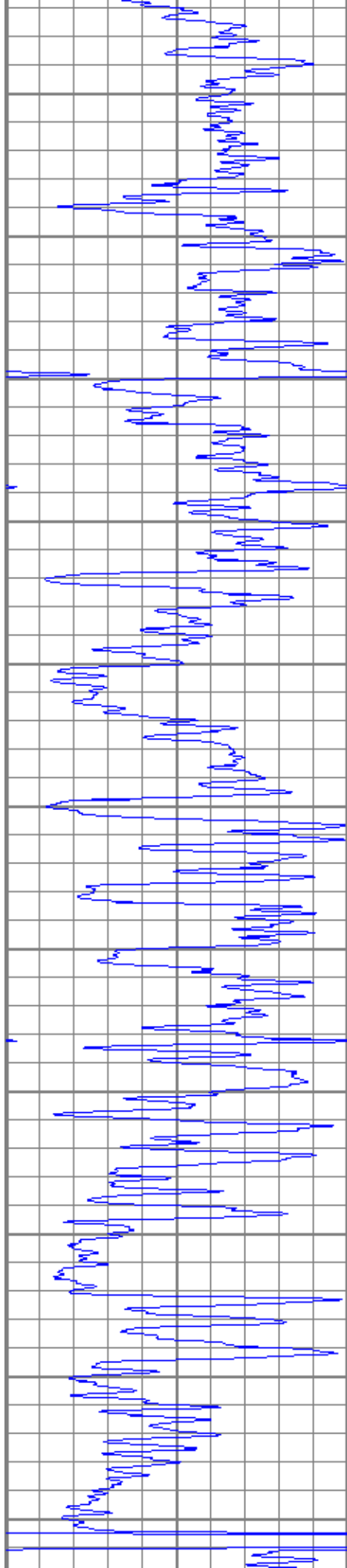


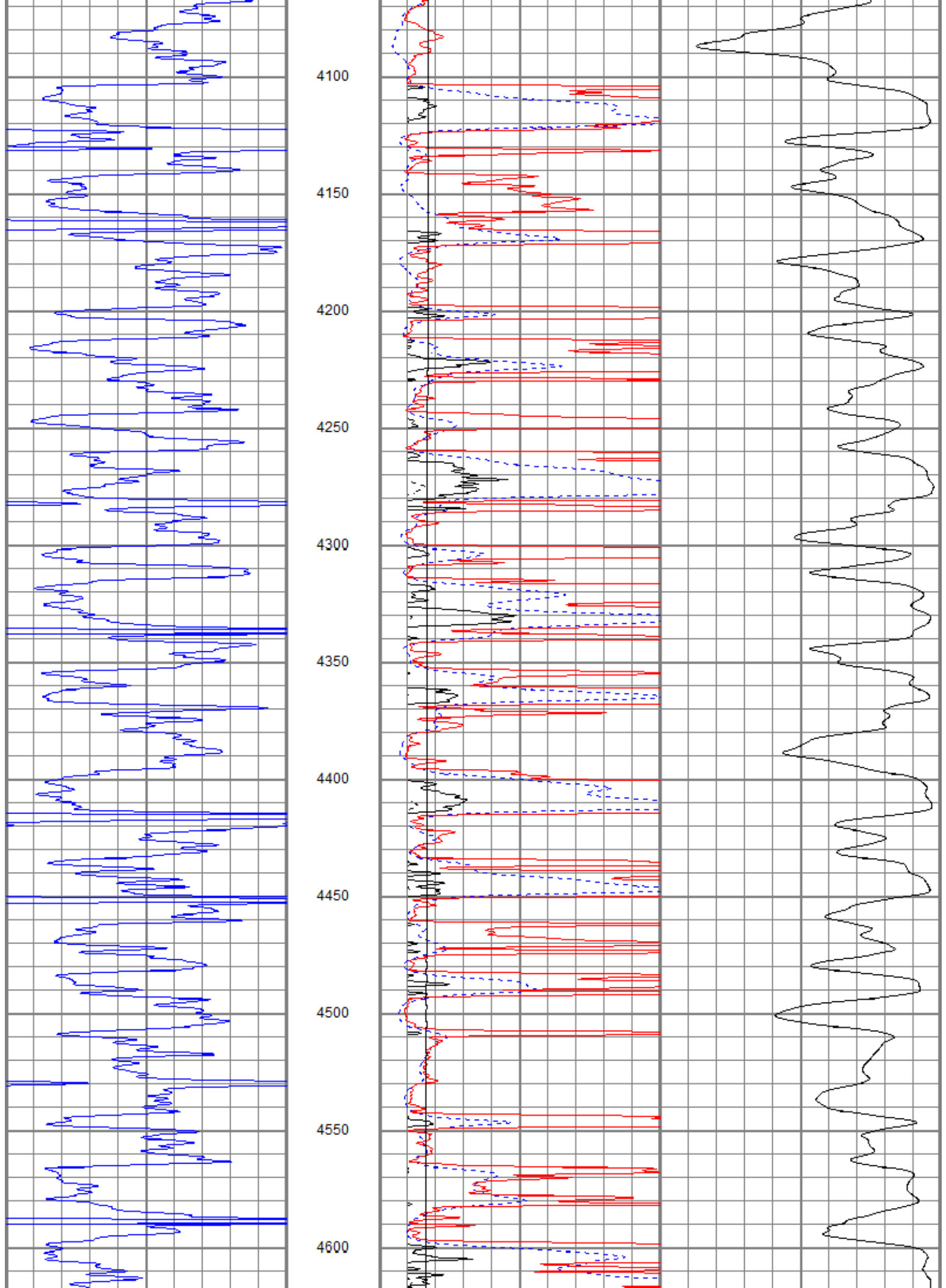
1900  
1950  
2000  
2050  
2100  
2150  
2200  
2250  
2300  
2350  
2400

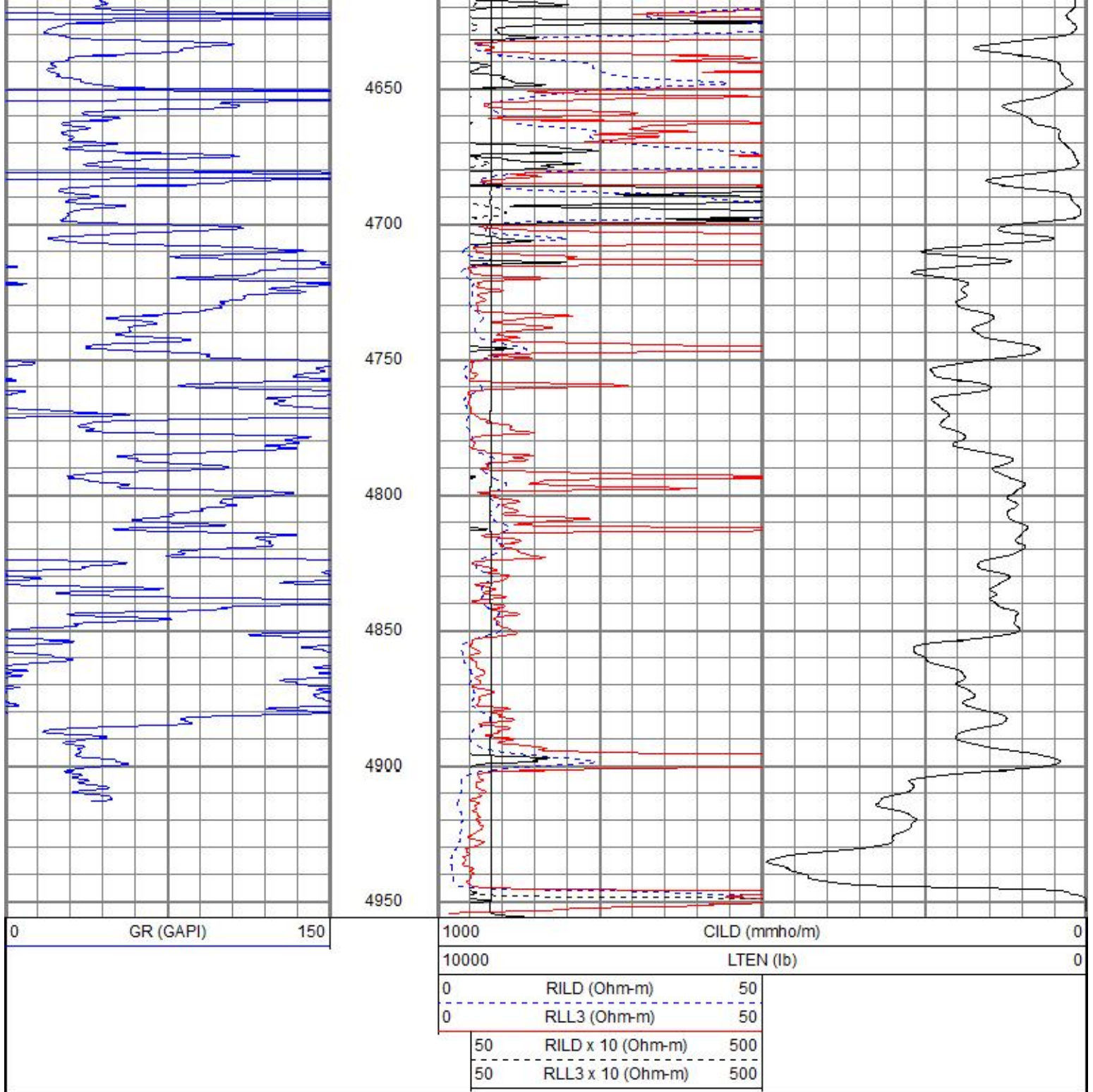








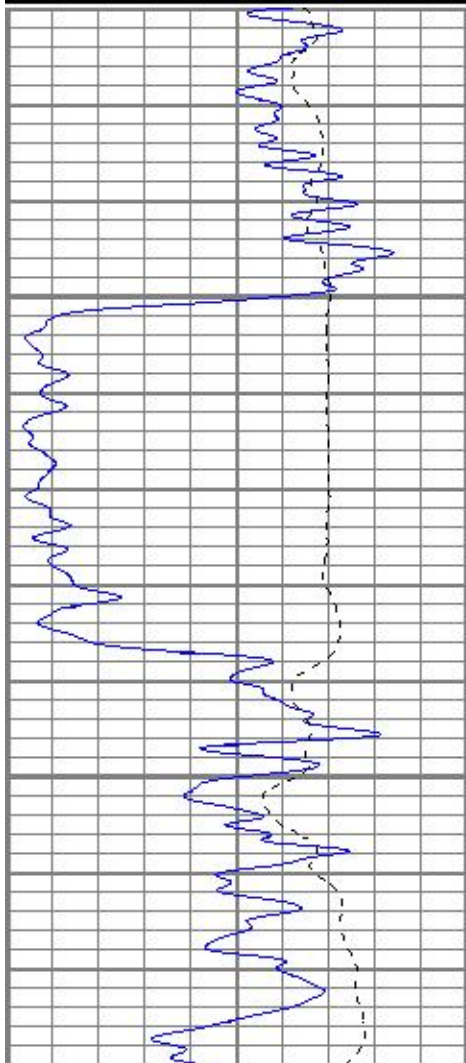




# MAIN PASS

Database File beavery#14-1oh.db  
 Dataset Pathname pass2  
 Presentation Format kdil  
 Dataset Creation Fri Jun 29 14:37:46 2018  
 Charted by Depth in Feet scaled 1:240

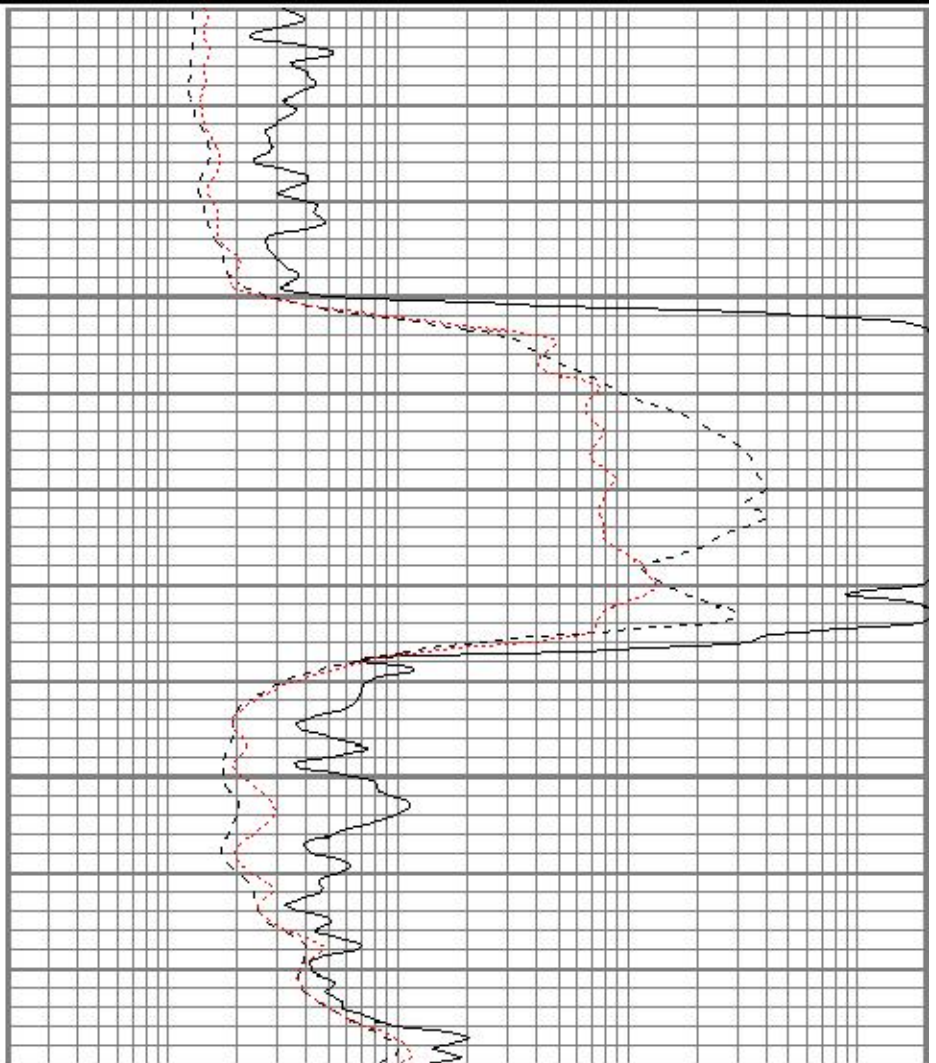
0	GR (GAPI)	150	0.2	RILD (Ohm-m)	2000
-100	SP (mV)	100	0.2	RLL3 (Ohm-m)	2000
			0.2	RILM (Ohm-m)	2000



3050

3100

0	GR (GAPI)	150
-100	SP (mV)	100



0.2	RILD (Ohm-m)	2000
0.2	RLL3 (Ohm-m)	2000
0.2	RILM (Ohm-m)	2000

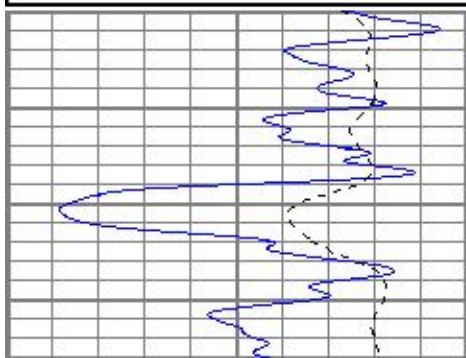


# MAIN PASS

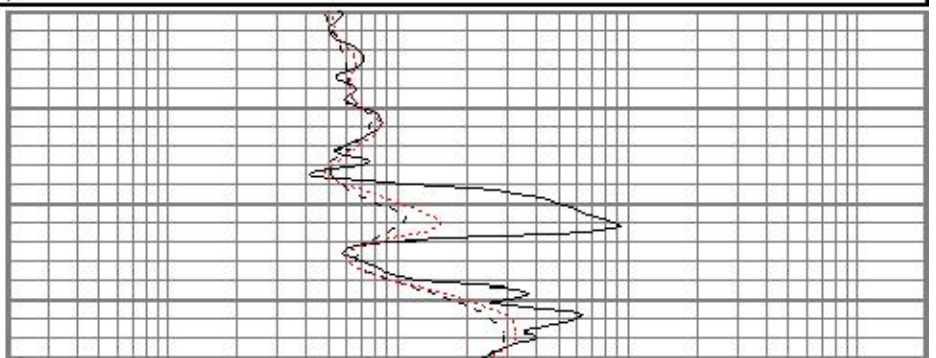
Database File beavery#14-1oh.db  
 Dataset Pathname pass2  
 Presentation Format kdil  
 Dataset Creation Fri Jun 29 14:37:46 2018  
 Charted by Depth in Feet scaled 1:240

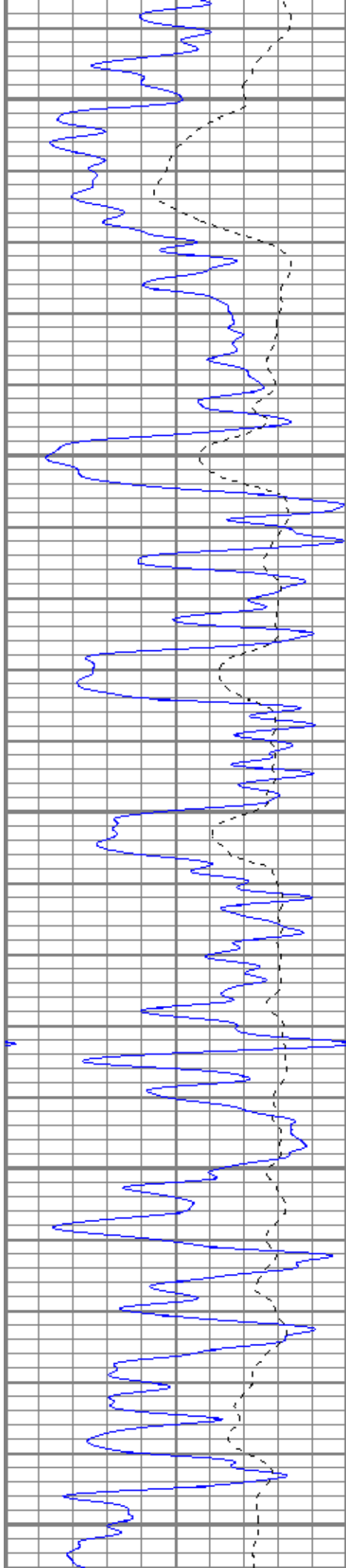
0	GR (GAPI)	150
-100	SP (mV)	100

0.2	RILD (Ohm-m)	2000
0.2	RLL3 (Ohm-m)	2000
0.2	RILM (Ohm-m)	2000



3100





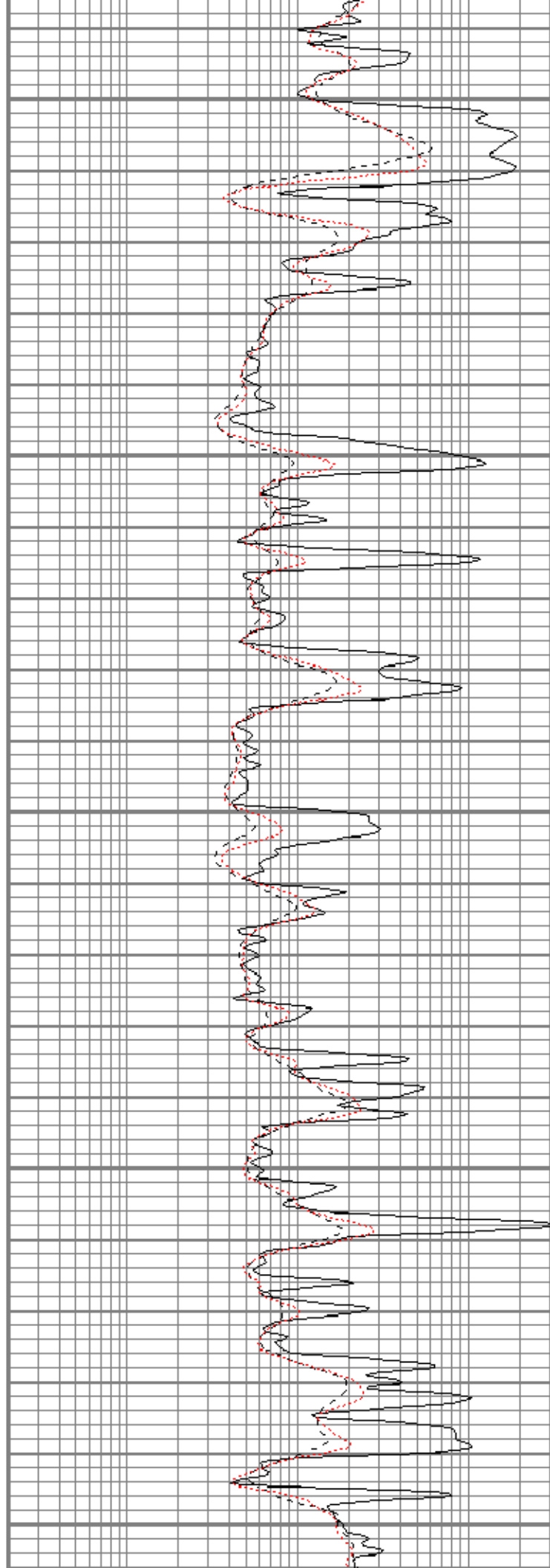
3750

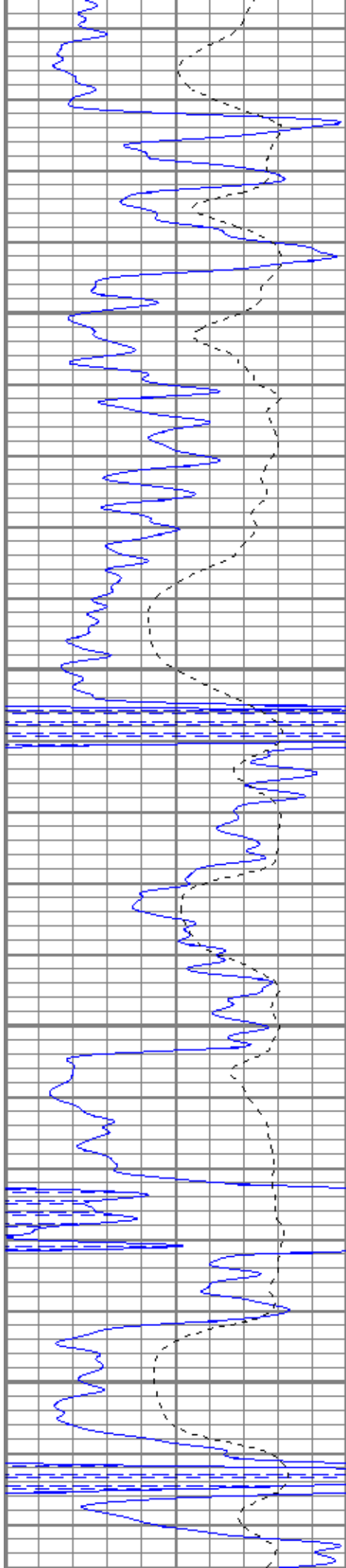
3800

3850

3900

3950



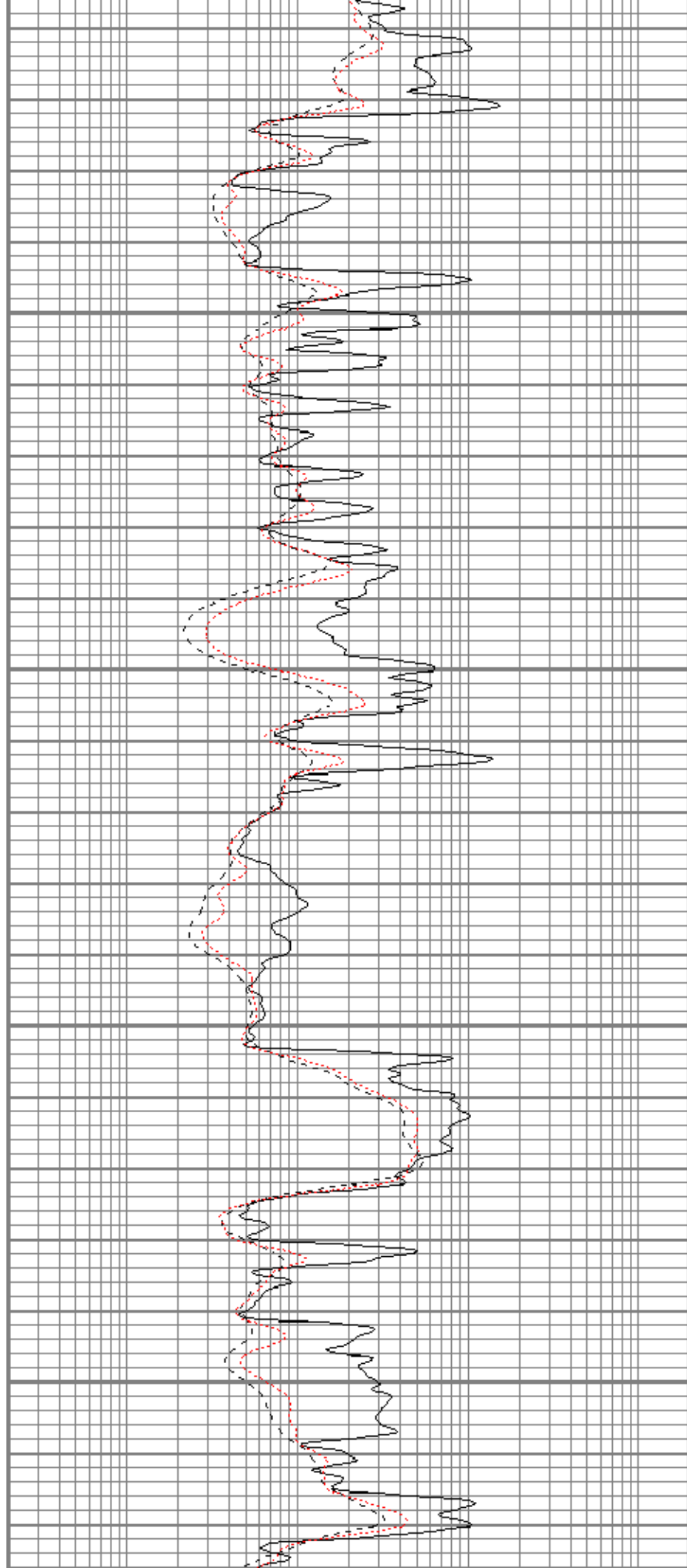


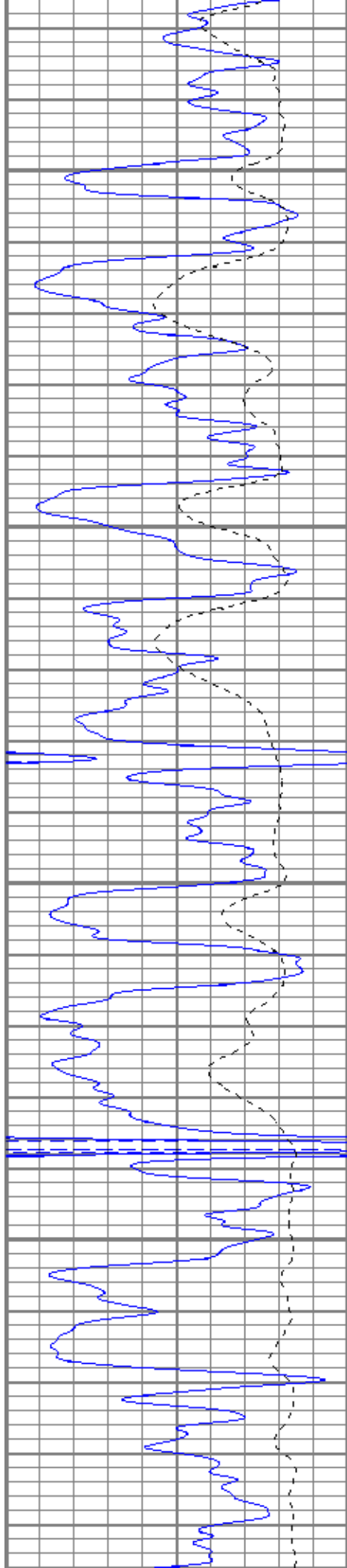
4000

4050

4100

4150



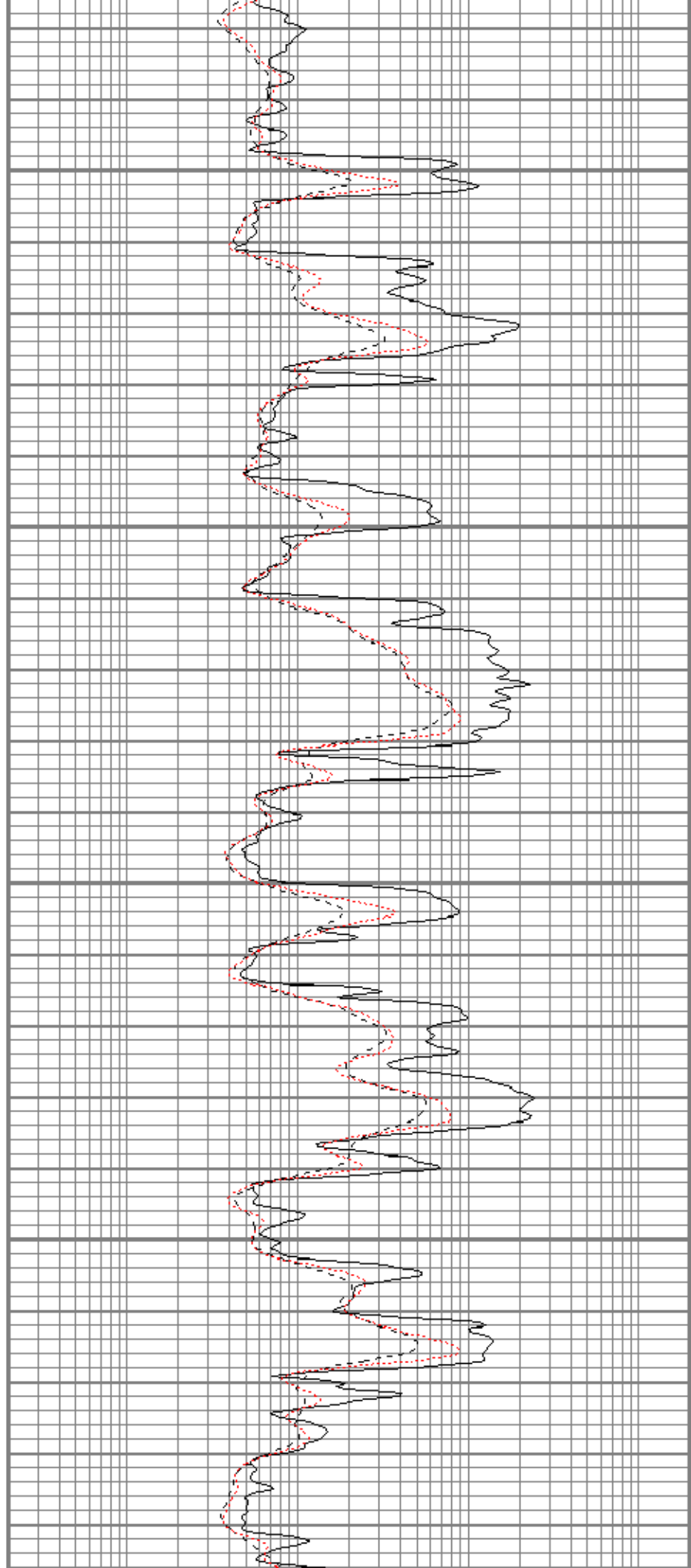


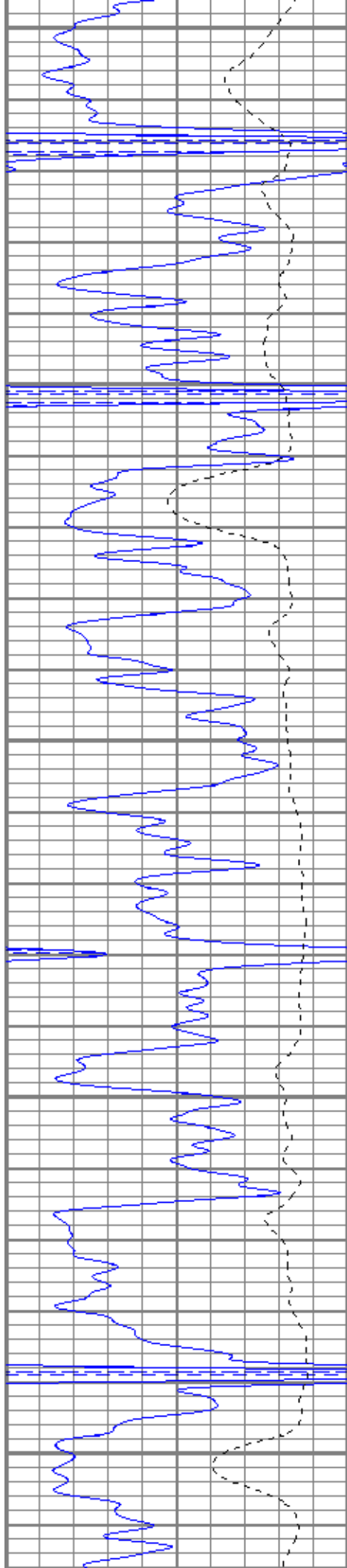
4200

4250

4300

4350





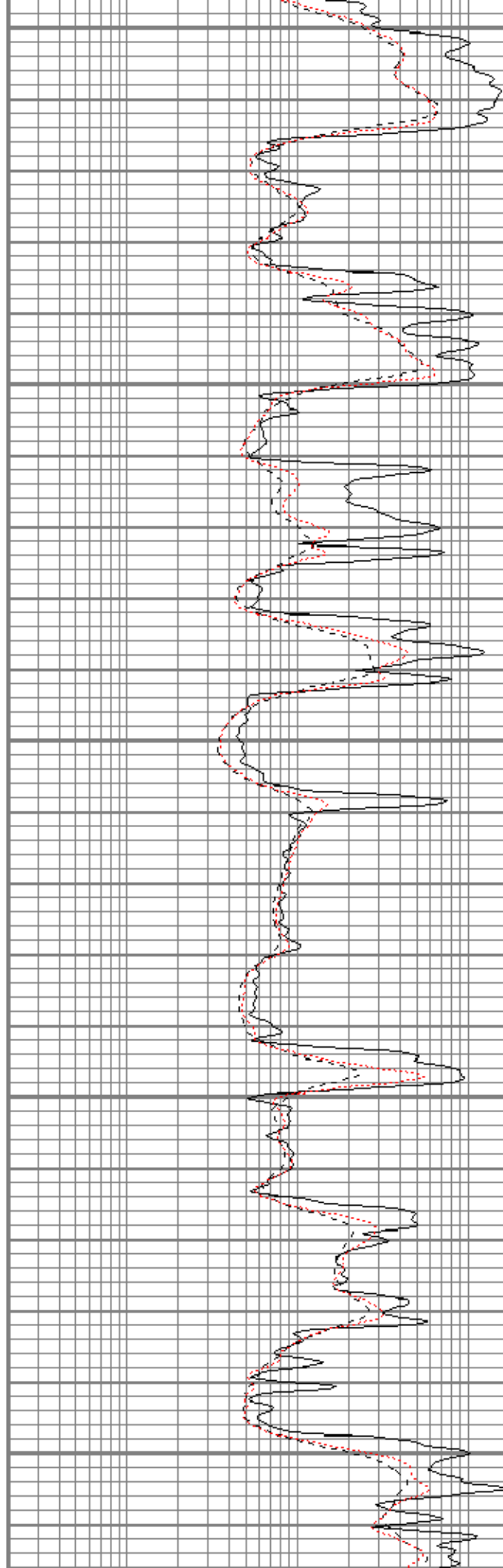
4400

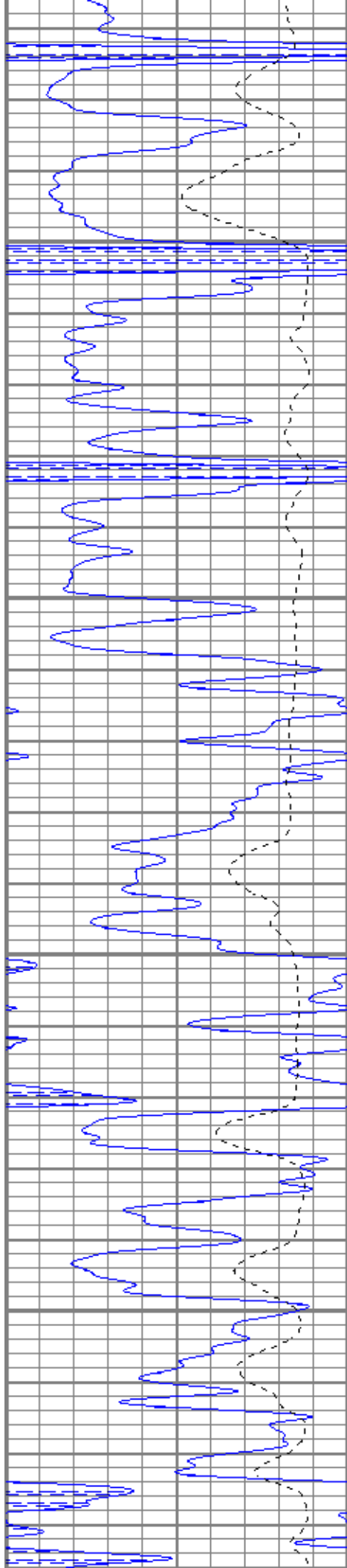
4450

4500

4550

4600



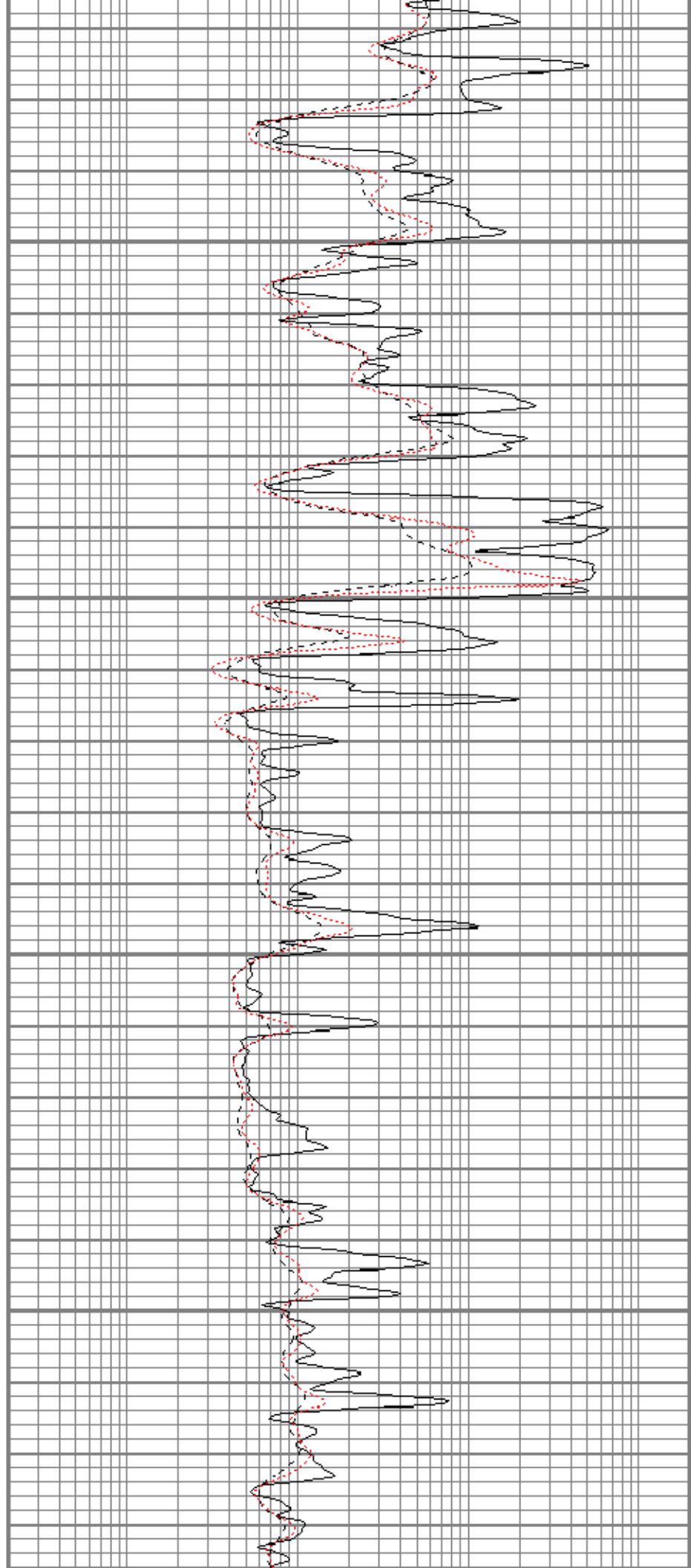


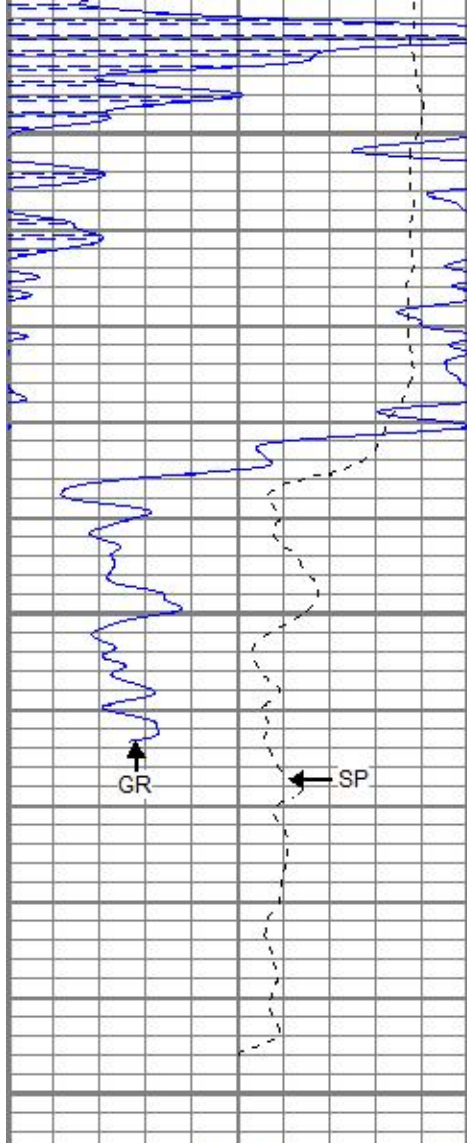
4650

4700

4750

4800





4850

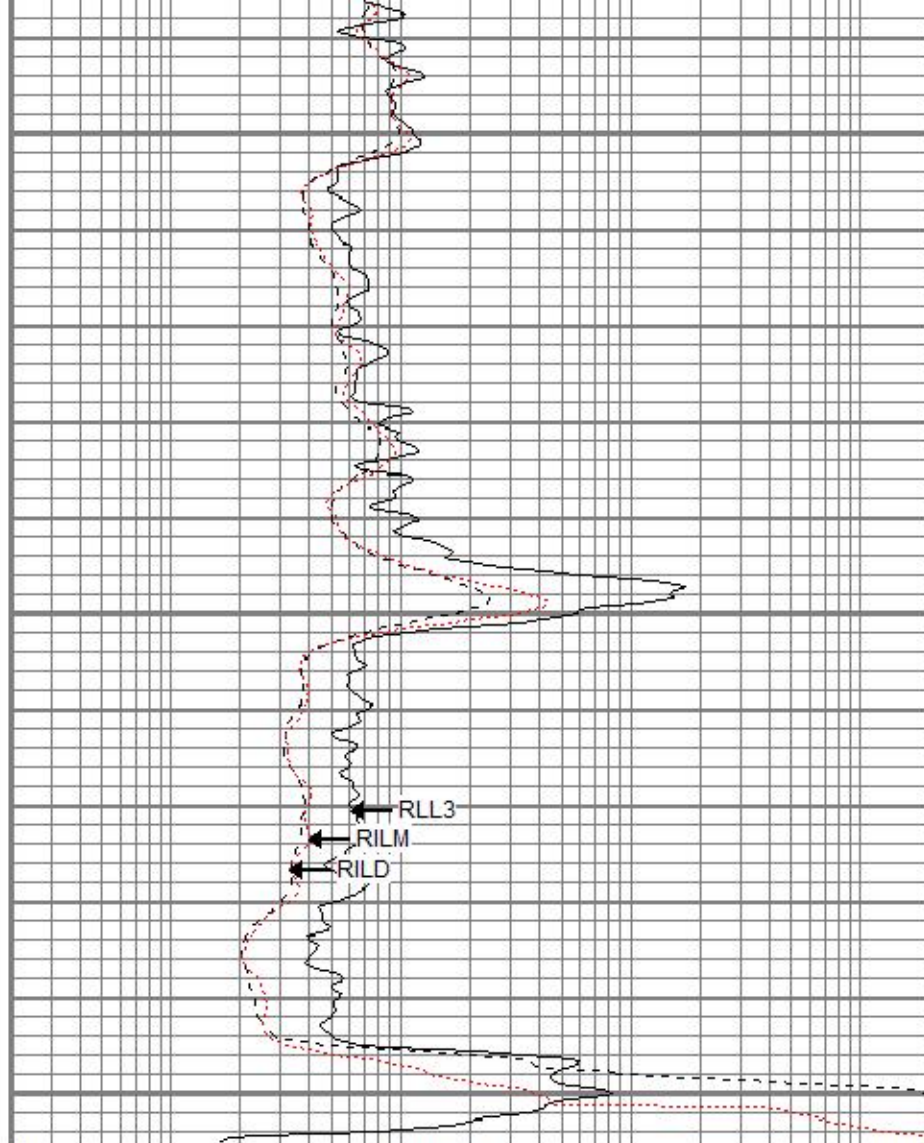
4900

4950

GR

SP

0	GR (GAPI)	150
-100	SP (mV)	100



RLL3

RILM

RILD

0.2	RILD (Ohm-m)	2000
0.2	RLL3 (Ohm-m)	2000
0.2	RILM (Ohm-m)	2000

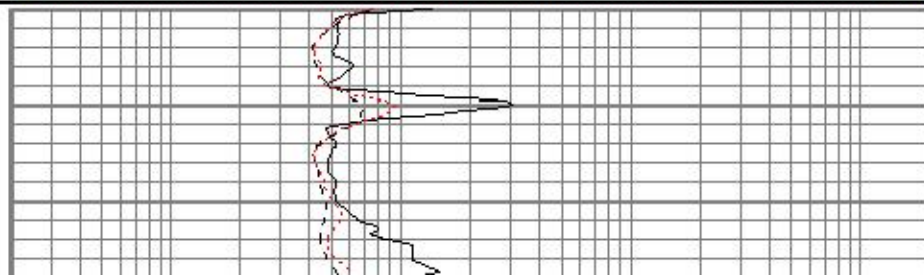
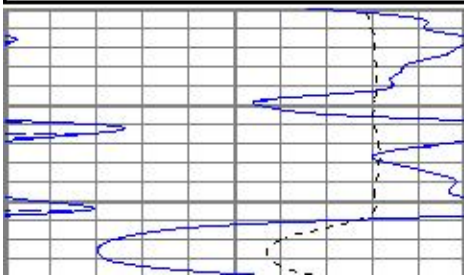


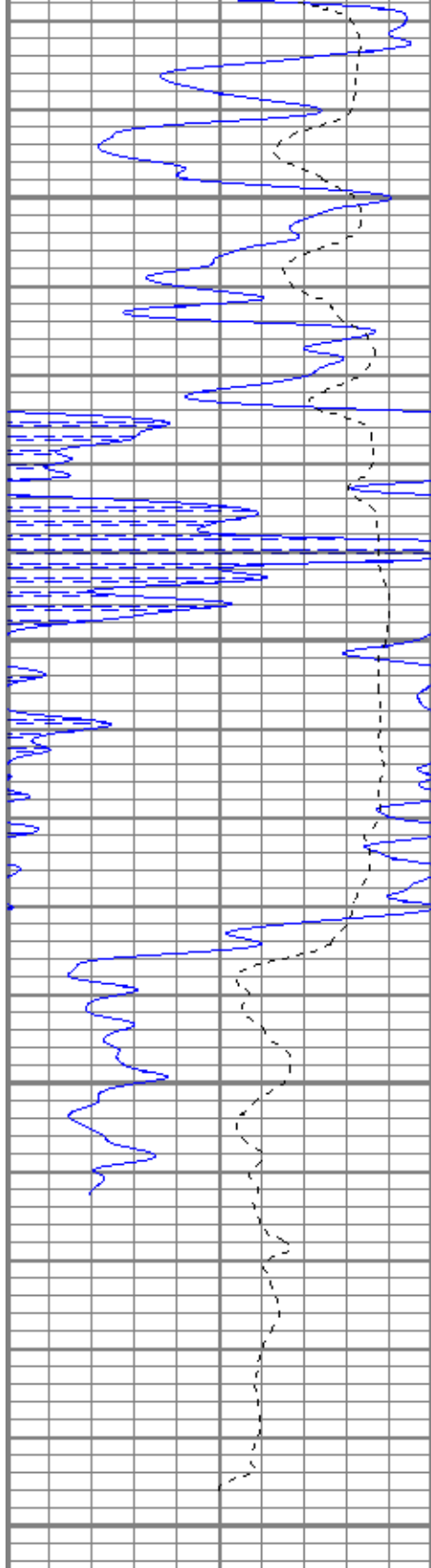
# REPEAT SECTION

Database File beavery#14-1oh.db  
 Dataset Pathname pass1  
 Presentation Format kdil  
 Dataset Creation Fri Jun 29 14:27:21 2018  
 Charted by Depth in Feet scaled 1:240

0	GR (GAPI)	150
-100	SP (mV)	100

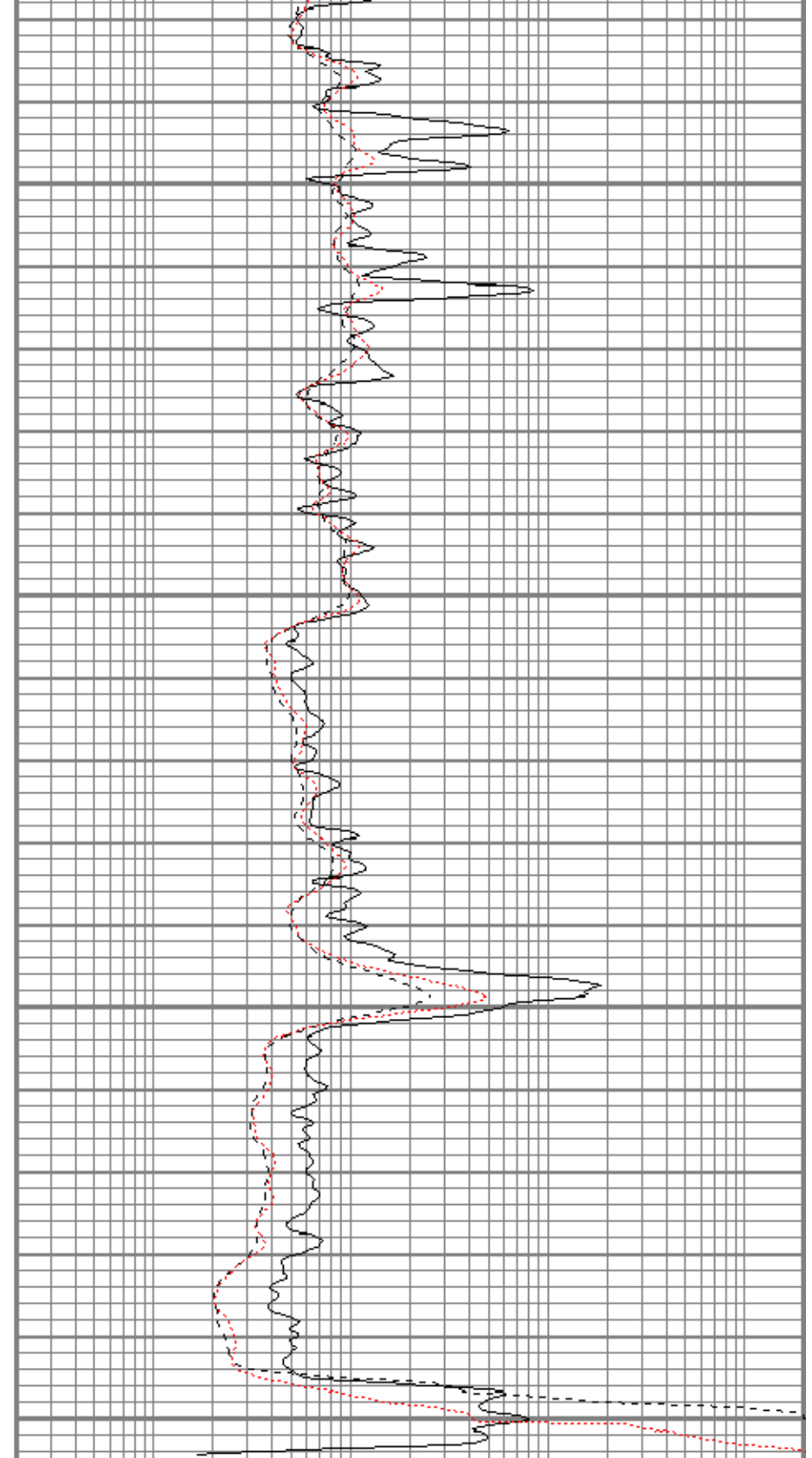
0.2	RILD (Ohm-m)	2000
0.2	RLL3 (Ohm-m)	2000
0.2	RILM (Ohm-m)	2000





0	GR (GAPI)	150
-100	SP (mV)	100

4800  
4850  
4900  
4950



0.2	RILD (Ohm-m)	2000
0.2	RLL3 (Ohm-m)	2000
0.2	RILM (Ohm-m)	2000

Calibration Report

Database File beavery#14-1oh.db  
 Dataset Pathname pass2  
 Dataset Creation Fri Jun 29 14:37:46 2018

Dual Induction Calibration Report

Serial-Model: 5375-G  
 Surface Cal Performed: Mon Jun 04 17:57:18 2018  
 Downhole Cal Performed: Mon Jun 04 17:57:18 2018  
 After Survey Verification Performed: Mon Jun 04 17:57:18 2018

Surface Calibration

		Readings			References			Results	
Loop:	Air	Loop		Air	Loop		m	b	
Deep	-0.002	0.655	V	0.000	350.000	mmho/m	532.190	1.293	
Medium	0.011	0.730	V	0.000	400.000	mmho/m	555.870	-5.985	
Internal:	Zero	Cal		Zero	Cal		m	b	
Deep	-0.002	0.654	V	0.000	350.000	mmho/m	532.823	1.314	
Medium	0.011	0.731	V	0.000	550.000	mmho/m	763.357	-8.251	

Downhole Calibration

		Readings			References			Results	
Internal:	Zero	Cal		Zero	Cal		m	b	
Deep	0.000	0.000	mmho/m	-0.019	349.565	mmho/m	1.000	0.000	
Medium	0.000	0.000	mmho/m	0.024	400.529	mmho/m	1.000	0.000	
Shallow	2.433	0.017	V	500.000	2.000	Ohm-m	200.067	1.624	

After Survey Verification

		Readings			Targets			Results	
Internal:	Zero	Cal		Zero	Cal		m'	b'	
Deep	0.000	0.000	mmho/m	0.000	0.000	mmho/m	1.000	0.000	
Medium	0.000	0.000	mmho/m	0.000	0.000	mmho/m	1.000	0.000	
Shallow	0.000	0.000	Ohm-m	500.000	2.000	Ohm-m	1.000	0.000	

Neutron Calibration Report

Serial Number: 2017  
 Tool Model: lithogearhart  
 Performed: (Not Performed)

Calibrator Value: 1 NAPI  
 Calibrator Reading: 1 cps  
 Sensitivity: 1 NAPI/cps

Temperature Calibration Report

Serial Number: WithOutMC  
 Tool Model: WOMC  
 Performed: (Not Performed)

	Reference	Reading
Low Reference:	0.00 degF	0.00 degF
High Reference:	1.00 degF	1.00 degF
Gain:	1.00	
Offset:	0.00	
Delta Spacing	1	

Inclinometer Calibration Report


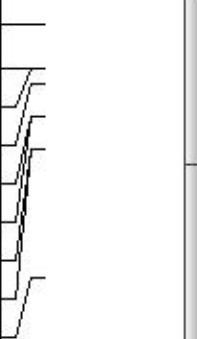

Performed: Wed Dec 06 22:31:06 2017

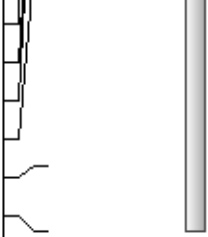
Low Read. High Read. Low Ref. High Ref.

X Accelerometer	205.00	1843.00	-1.00	1.00	gee
Y Accelerometer	205.00	1843.00	-1.00	1.00	gee
Z Accelerometer					gee

Gamma Ray Calibration Report

Serial Number:	WithOutMC		
Tool Model:	WOMC		
Performed:	Wed Dec 06 22:30:58 2017		
Calibrator Value:	1.0	GAPI	
Background Reading:	0.0	cps	
Calibrator Reading:	1.0	cps	
Sensitivity:	1.0000	GAPI/cps	

Sensor	Offset (ft)	Schematic	Description	Length (ft)	O.D. (in)	Weight (lb)
			CHD-STD	0.50	1.69	1.00
GR	40.07		ADT-WOMC (WithOutMC) Telemetry Without Mud Cell	4.58	3.50	120.00
ACCY	38.91					
ACCX	38.91					
SSTAT	38.49					
PSTAT	37.66					
ASTAT	37.66					
GRD	36.82					
TEMP	36.82					
NEU	33.46					
LStat	24.30		ADT1LITH-A (1) Admyr Litho Density Tool	9.29	3.50	240.00
LS8	23.64					
LS7	23.64					
LS6	23.64					
LS5	23.64					
LS4	23.64					
LS3	23.64					
LS2	23.64					
LS1	23.64					
LSV	23.64					
LSD	23.62					
SSV	23.43					
SS8	23.43					
SS7	23.43					
SS6	23.43					
SS5	23.43					
SS4	23.43					
SS3	23.43					
SS2	23.43					
SS1	23.43					
DCAL	23.37		DIL-G (5375) Gearhart	21.47	4.00	345.00

SSD	23.04	
SP	10.60	
CILD	10.60	
CILM	6.89	
RLL3	1.70	
TR_Mon	0.00	

Dataset: beavery#14-1oh.db: field/well/run1/pass2  
 Total length: 41.49 ft  
 Total weight: 791.00 lb  
 O.D.: 4.00 in