



**BOREHOLE
COMPENSATED
SONIC
LOG**

Company Bickle Energies, LLC.
Well Avery #14-1
Field Unnamed
County Cheyenne
State Kansas

Company Bickle Energies, LLC.
Well Avery #14-1
Field Unnamed
County Cheyenne State Kansas

Location: API #: 15 023 21488
1335' FSL & 1645' FEL
SEC 14 TWP 5S RGE 37W
Permanent Datum Ground Level Elevation 3333'
Log Measured From KB 5' AGL
Drilling Measured From KB
Other Services
CDNL
ML
DIL
Elevation
K.B. 3338'
D.F. 3337'
G.L. 3333'

Date	6-29-18
Run Number	One
Depth Driller	4950'
Depth Logger	4955'
Bottom Logged Interval	4947'
Top Log Interval	450'
Casing Driller	8 5/8" @ 349'
Casing Logger	349'
Bit Size	7 7/8"
Type Fluid in Hole	Chemical
Density / Viscosity	9.5/5.3
PH / Fluid Loss	9.5/7.6
Source of Sample	Pit
Rm @ Meas. Temp	.8 @ 88 degf
Rmf @ Meas. Temp	0.6 @ 88 degf
Rmc @ Meas. Temp	1.0 @ 88 degf
Source of Rmf / Rmc	Calculated
Rm @ BHT	0.53 @ 134 degf
Time Circulation Stopped	12:00 p.m
Time Logger on Bottom	5:10 p.m
Maximum Recorded Temperature	134 degf
Equipment Number	T-127
Location	Hays, KS.
Recorded By	C. Patterson
Witnessed By	Mr. Kleth Reavis

<<< Fold Here >>>

All interpretations are opinions based on inferences from electrical or other measurements and we cannot and do not guarantee the accuracy or correctness of any interpretation, and we shall not, except in the case of gross or willful negligence on our part, be liable or responsible for any loss, costs, damages, or expenses incurred or sustained by anyone resulting from any interpretation made by any of our officers, agents or employees. These interpretations are also subject to our general terms and conditions set out in our current Price Schedule.

Comments

North Of Brewster,KS to EE Rd., West EE Rd. 3 mi. to 34 Rd., Then North on 34 Rd. 3 1/4 mi.
West Into Location

Thanks for using Gemini Wireline LLC
785-625-1182

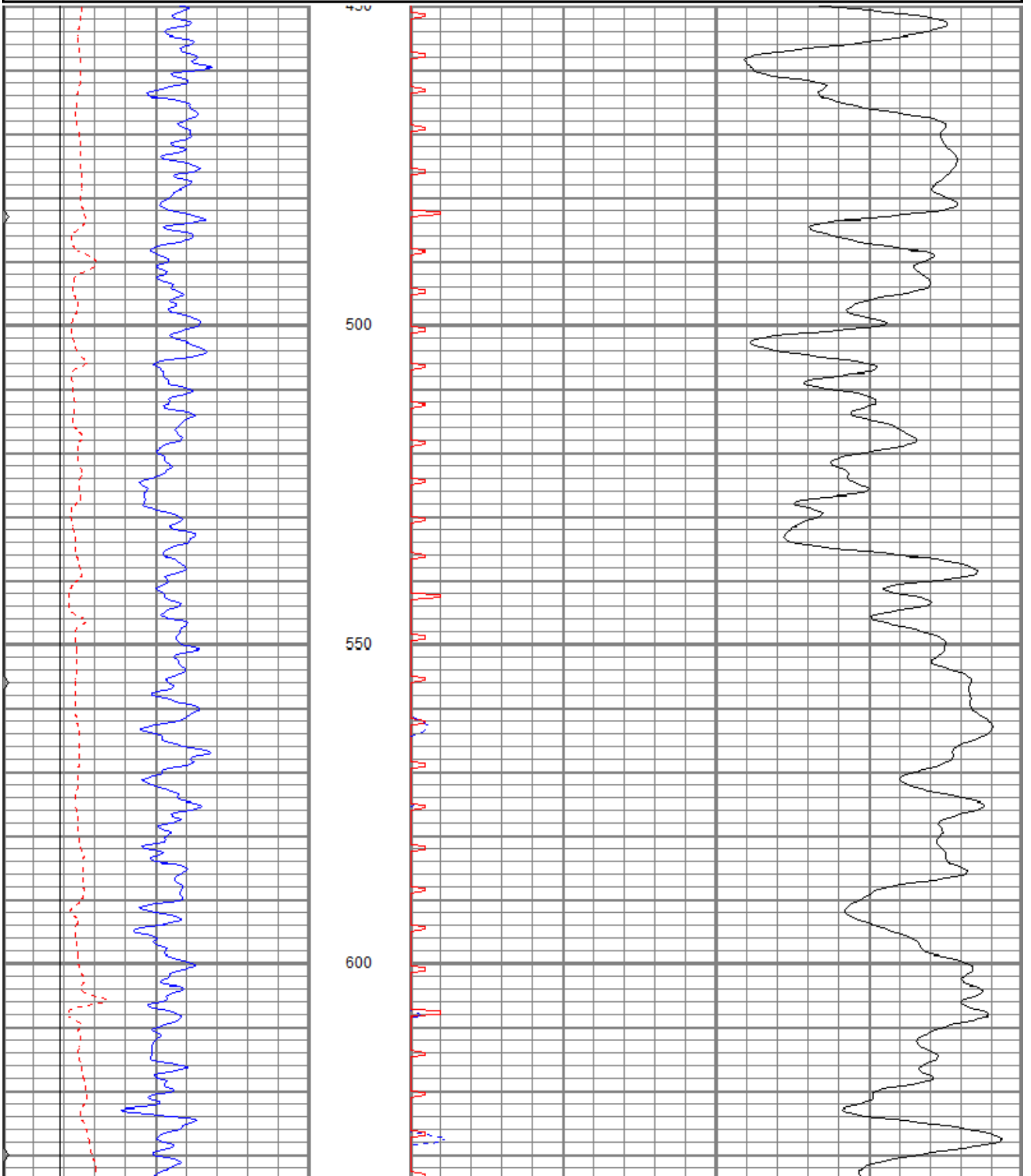


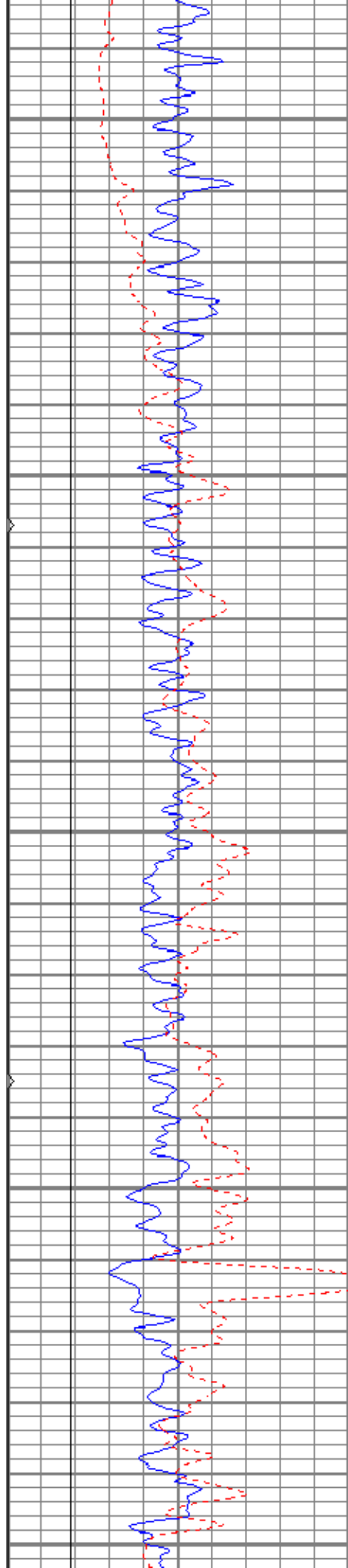
MAIN PASS

Database File beavery#14-10h.db
 Dataset Pathname pass7.1
 Presentation Format kbcs
 Dataset Creation Fri Jun 29 19:22:23 2018
 Charted by Depth in Feet scaled 1:240

0	GR (GAPI)	150
6	MCAL (in)	16
6	BOREID (in)	16
0	MINMK	50

140	DT (usec/ft)	40
30	SPOR (pu)	-10
0	ITT (msec)	20





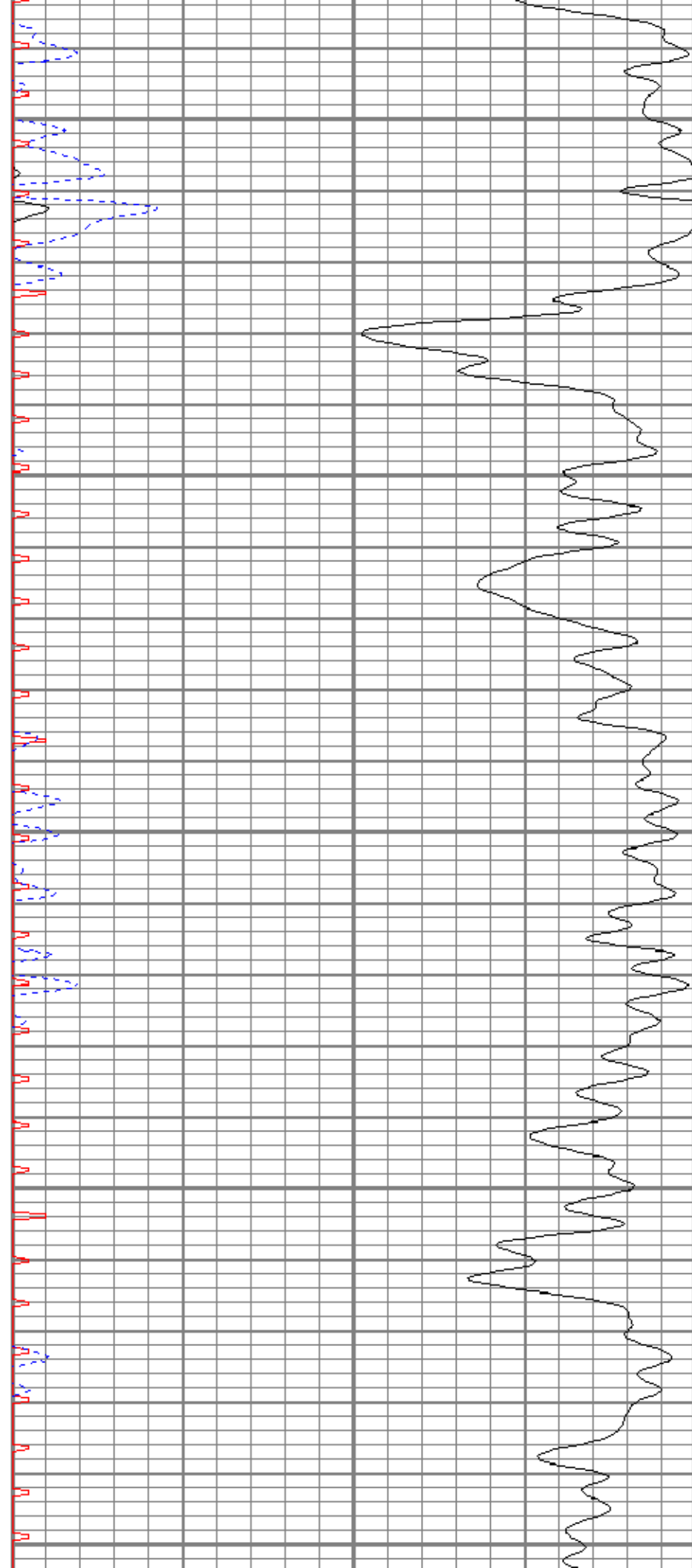
650

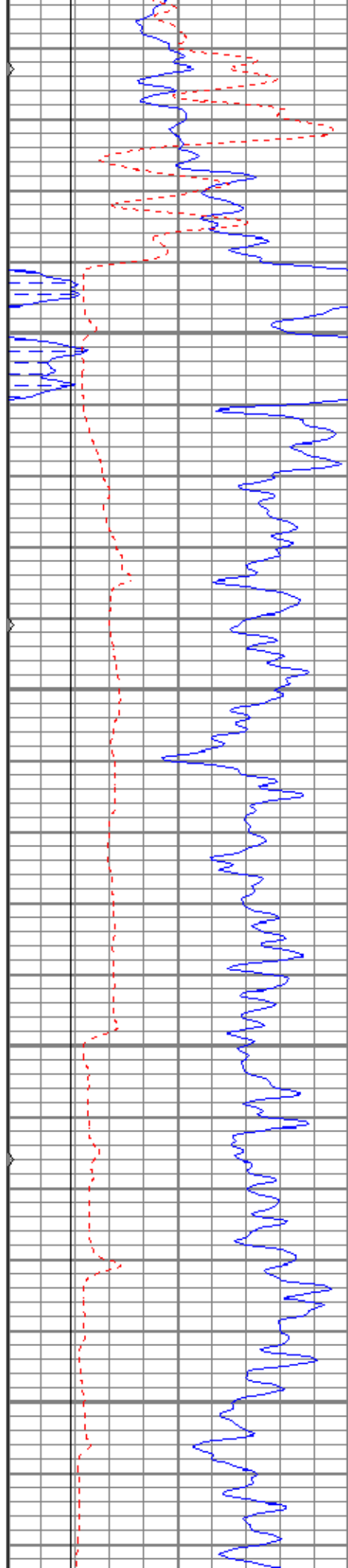
700

750

800

850



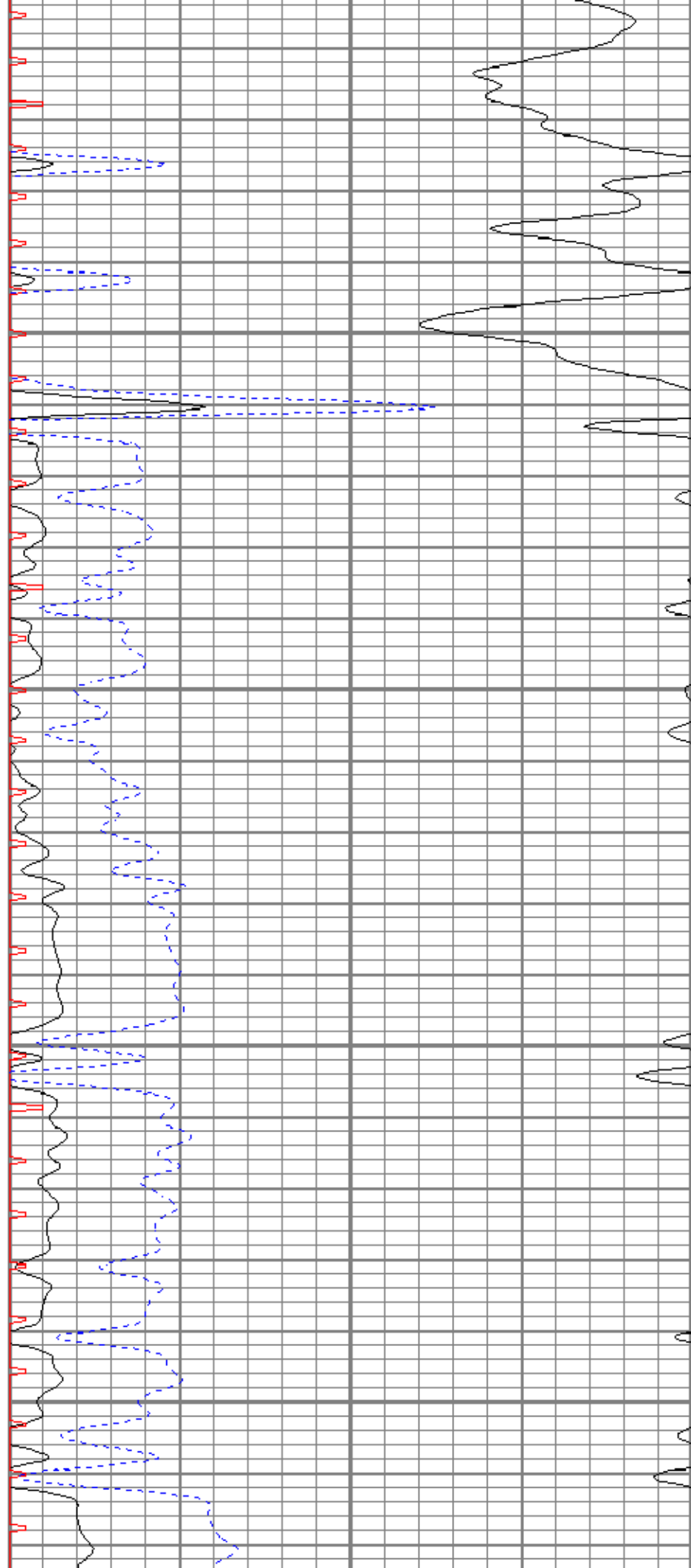


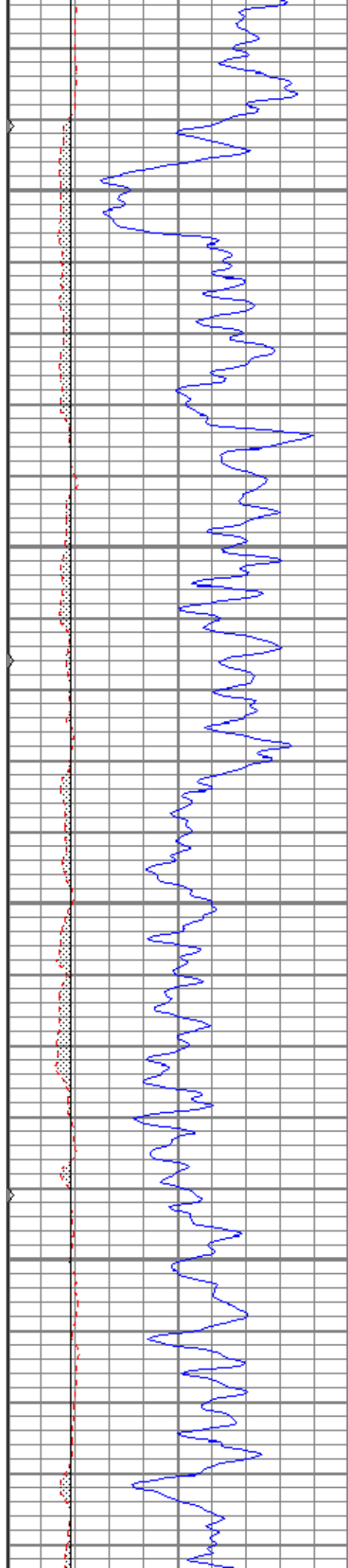
900

950

1000

1050



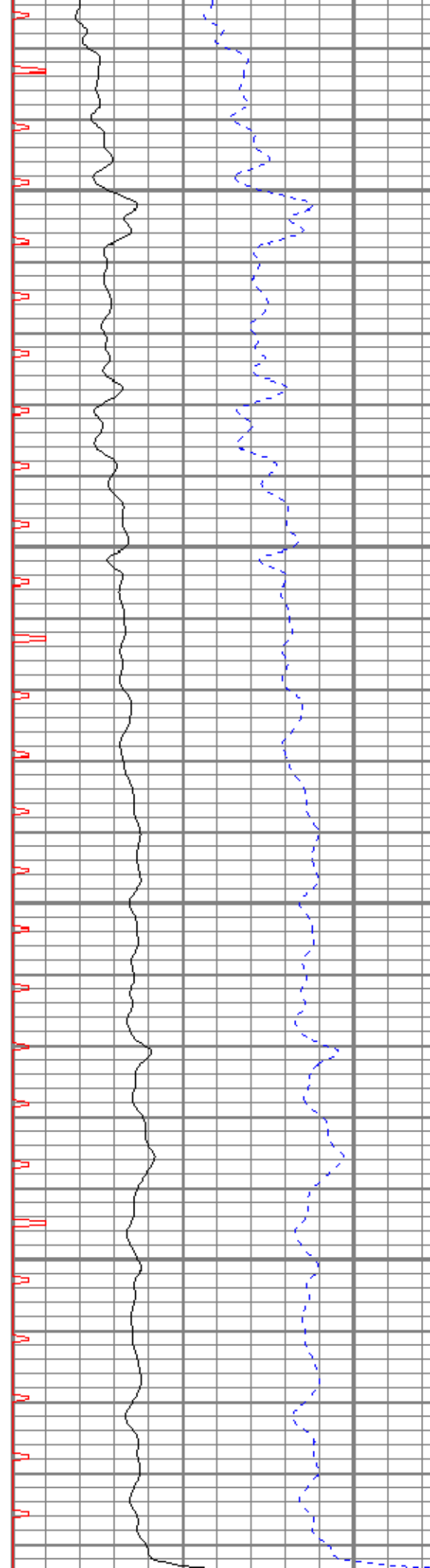


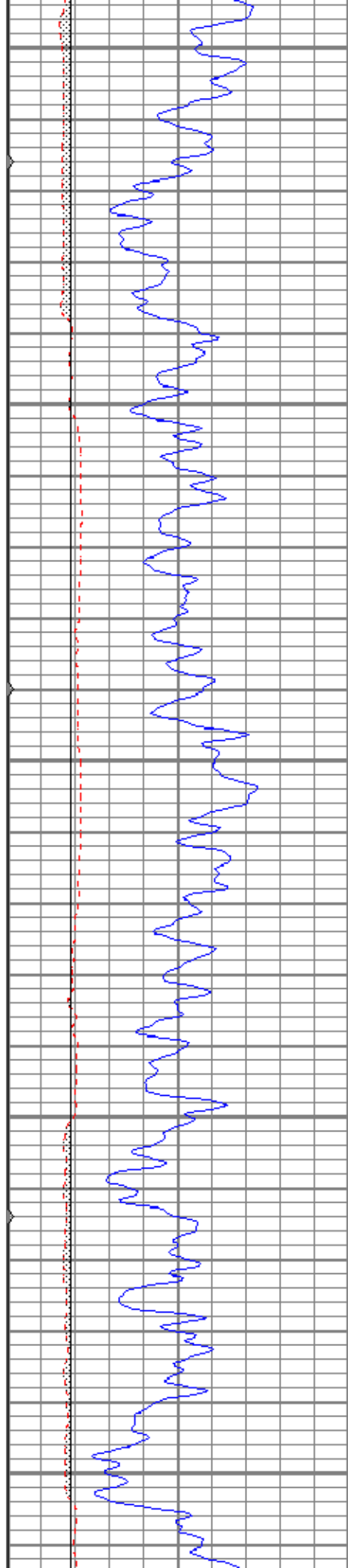
1100

1150

1200

1250





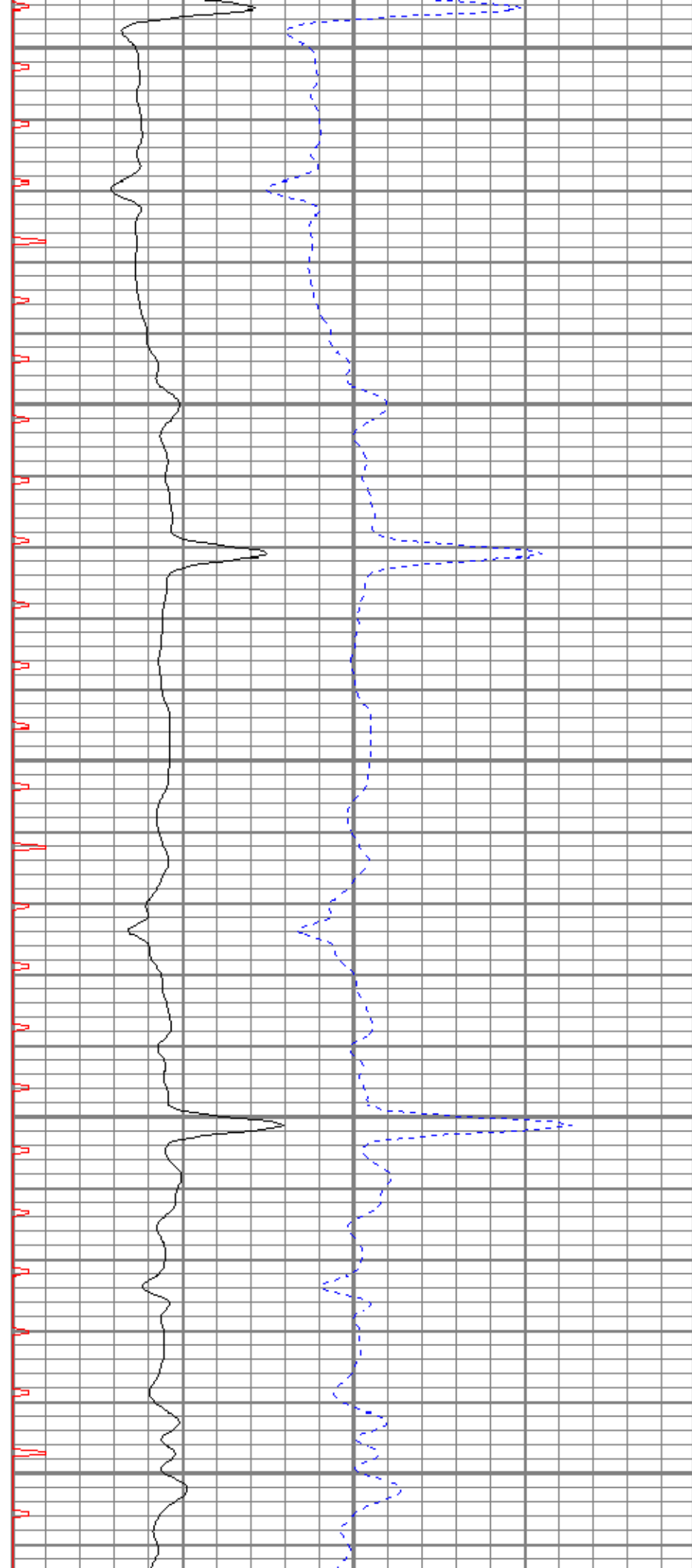
1300

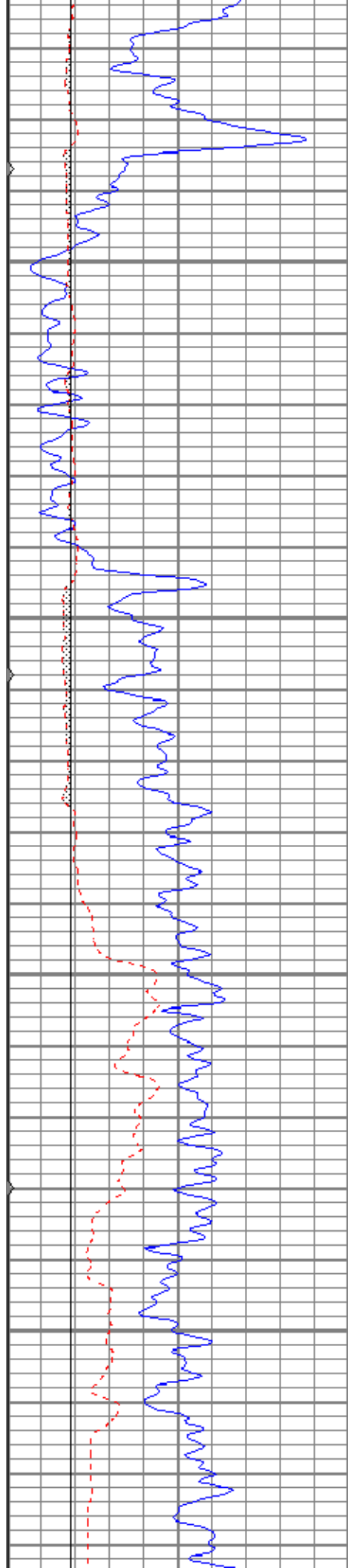
1350

1400

1450

1500



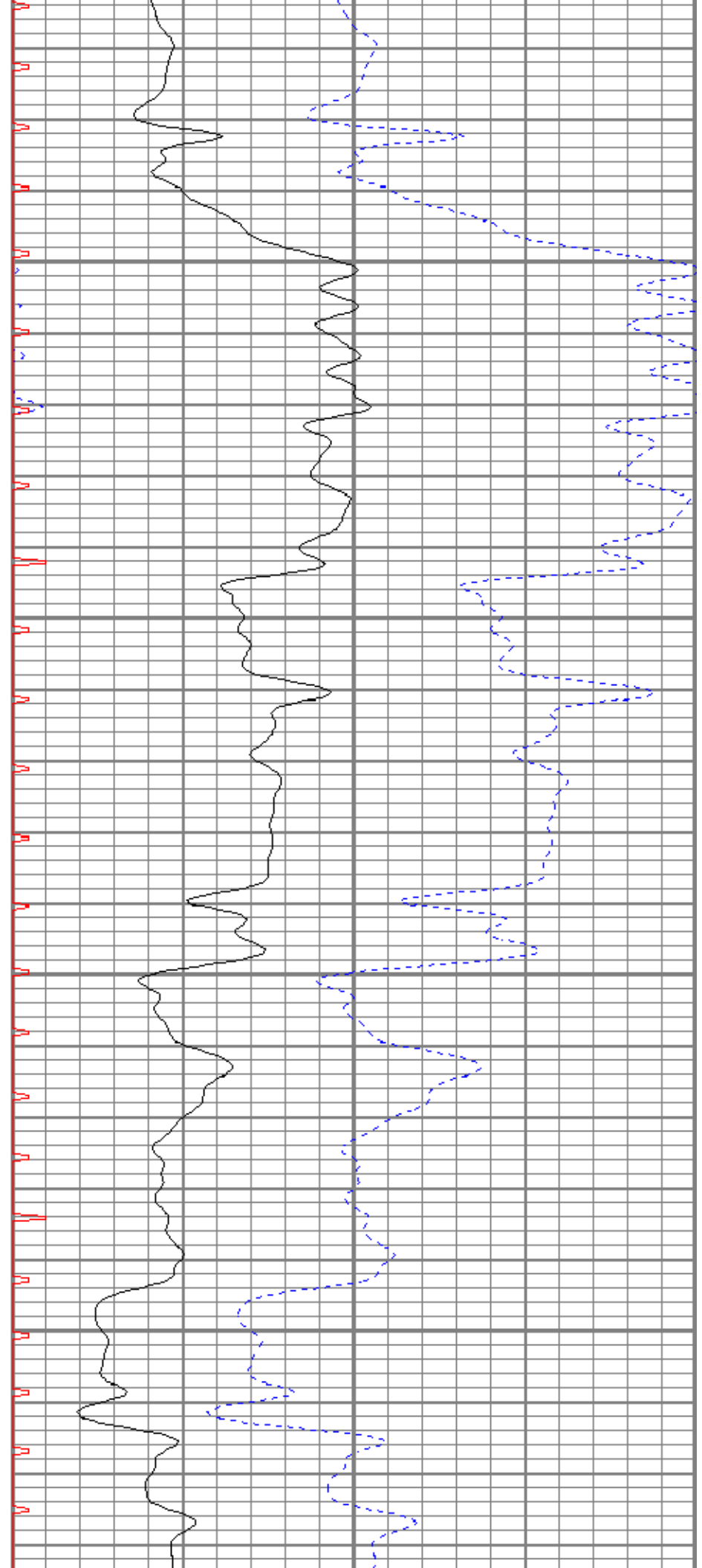


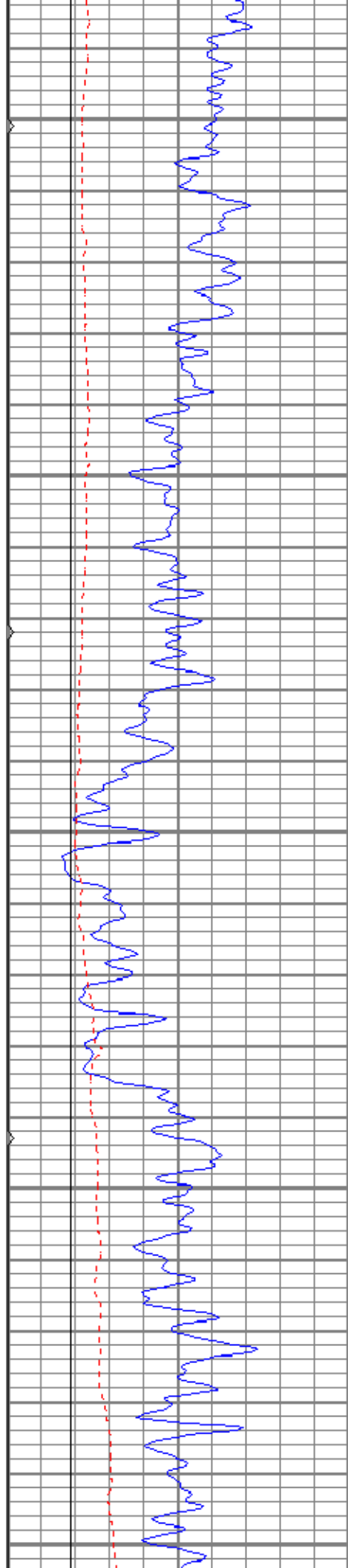
1550

1600

1650

1700





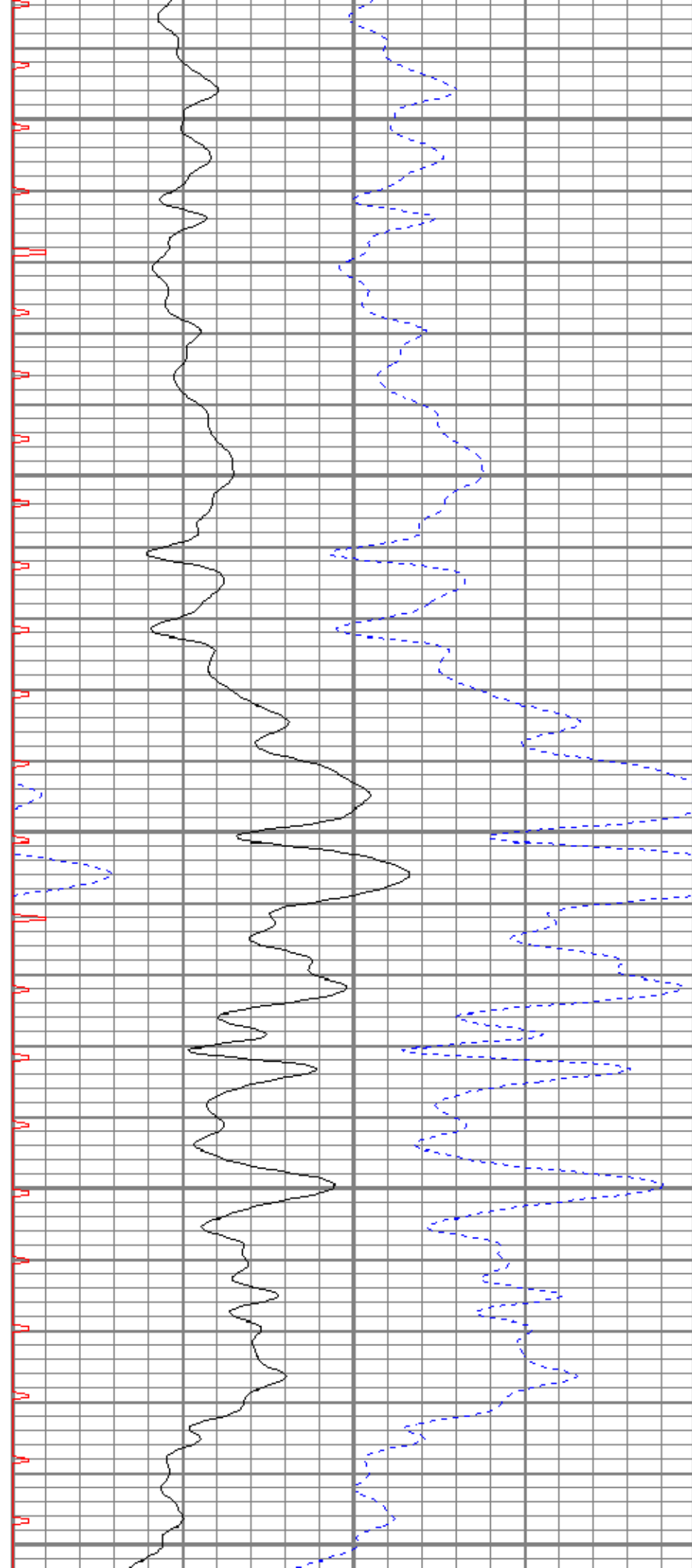
1750

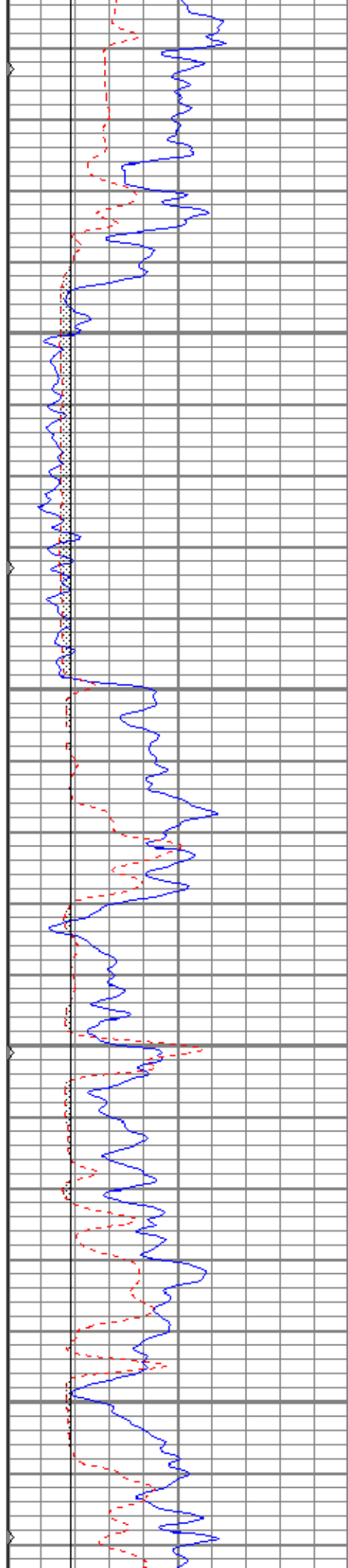
1800

1850

1900

1950



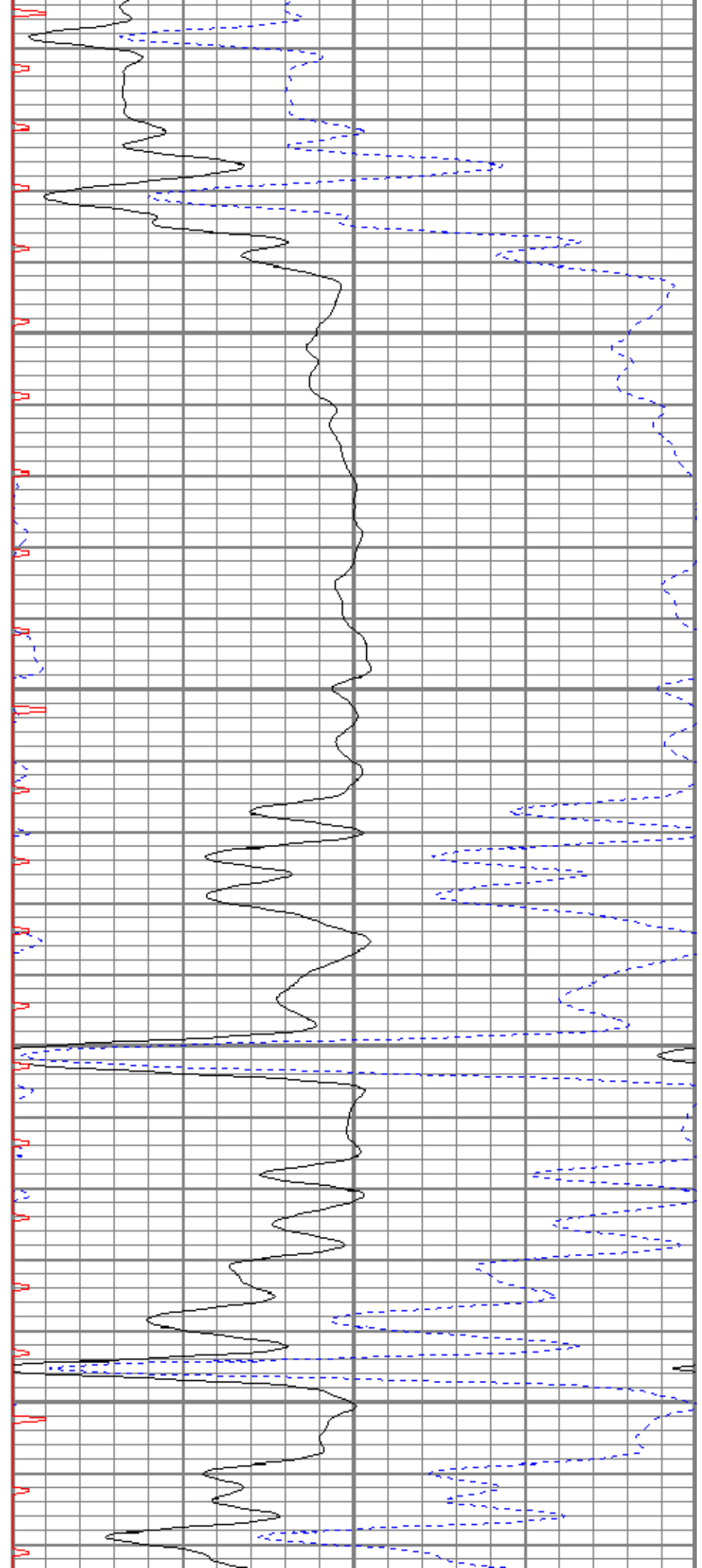


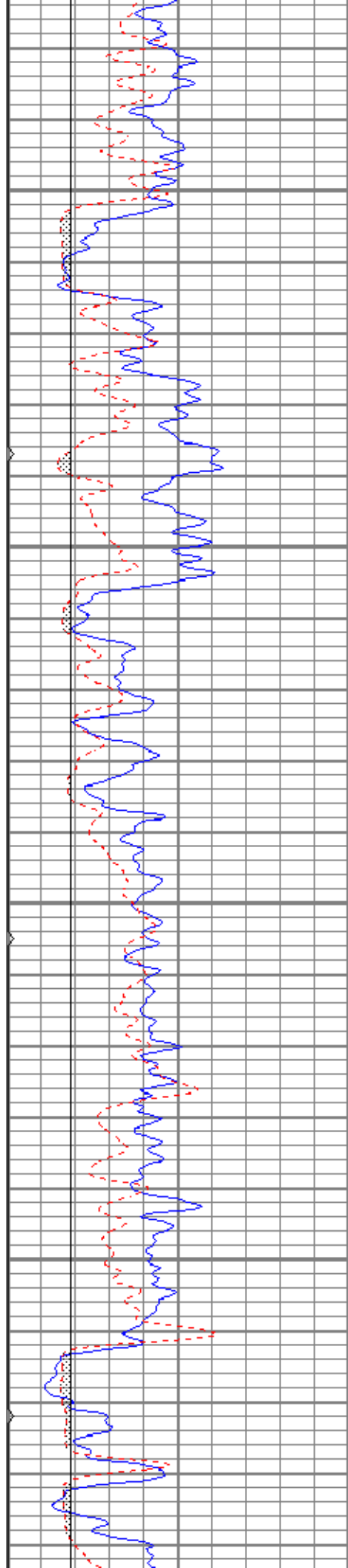
2000

2050

2100

2150



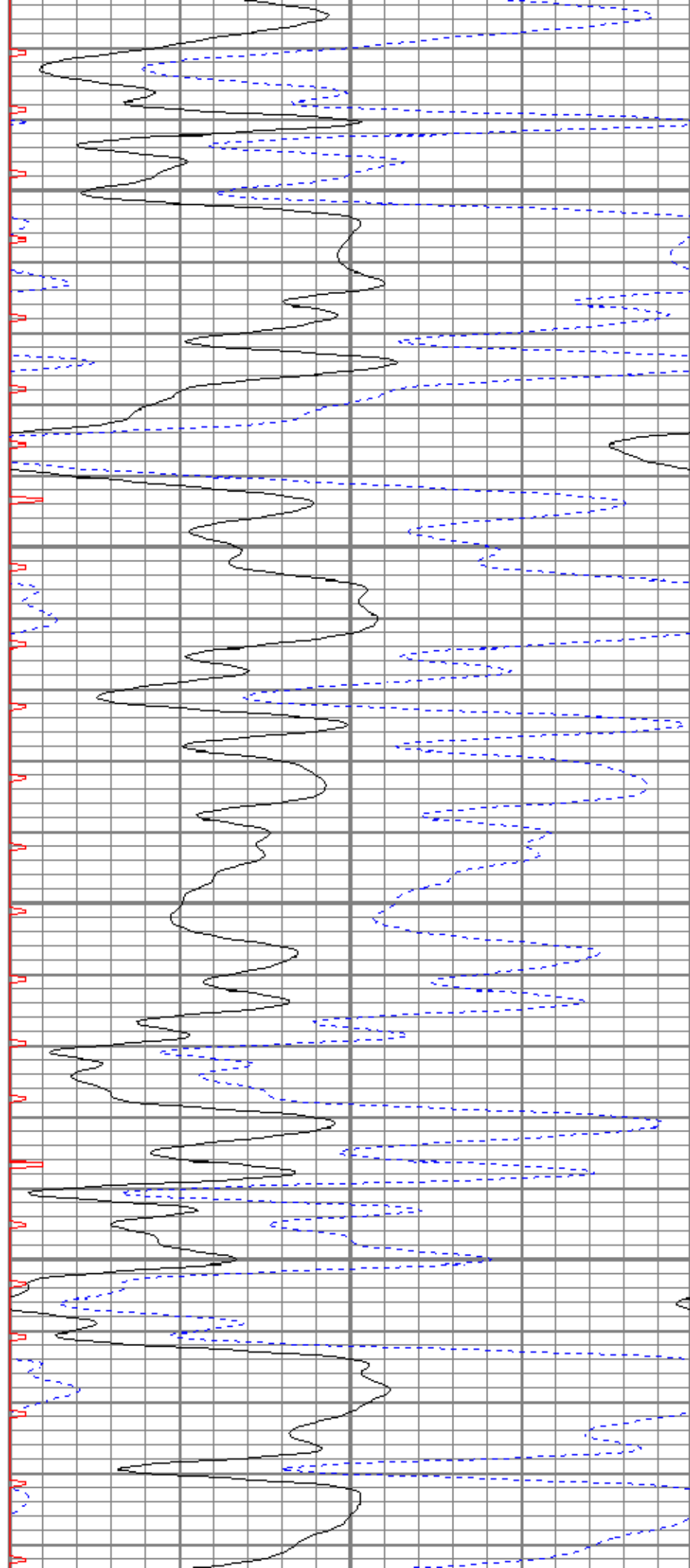


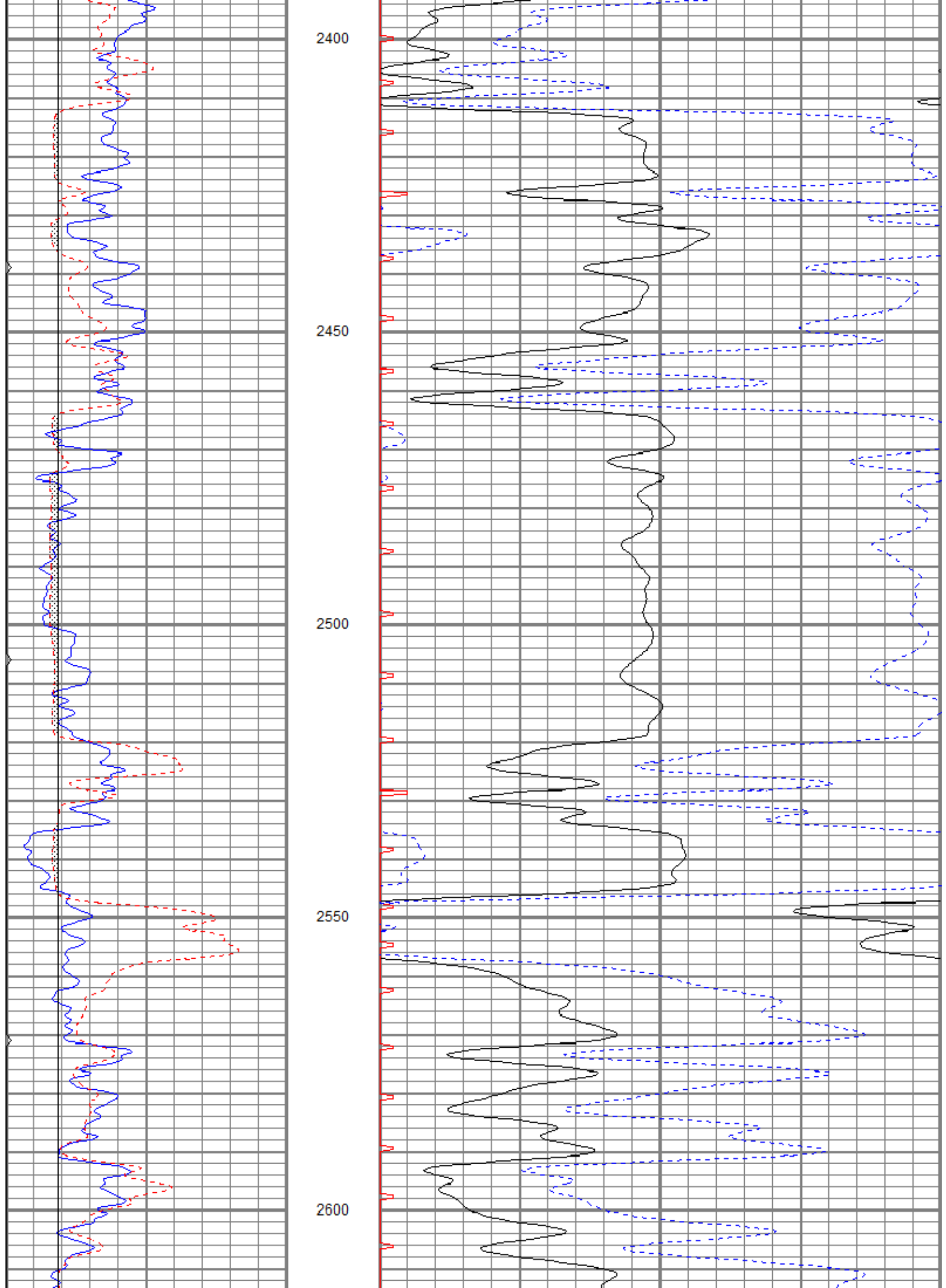
2200

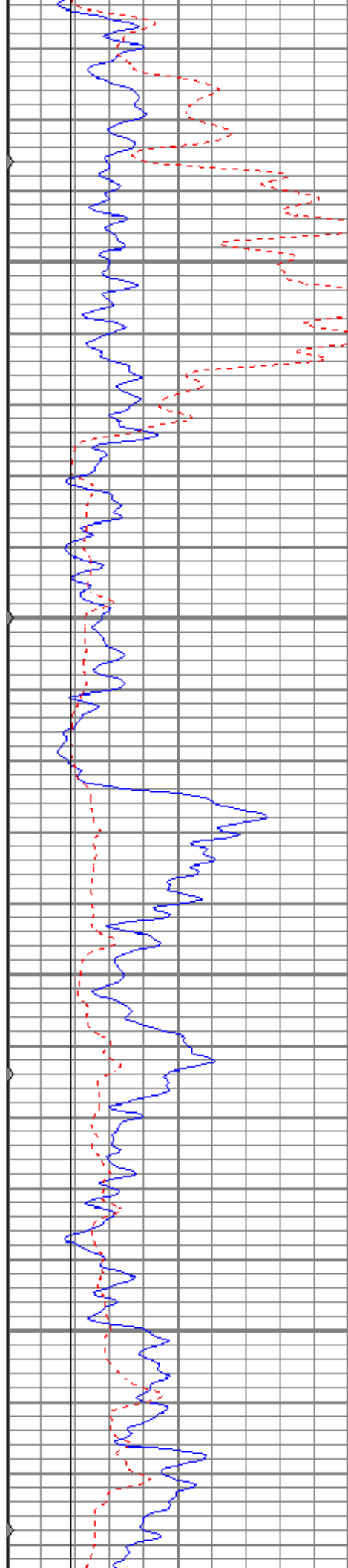
2250

2300

2350





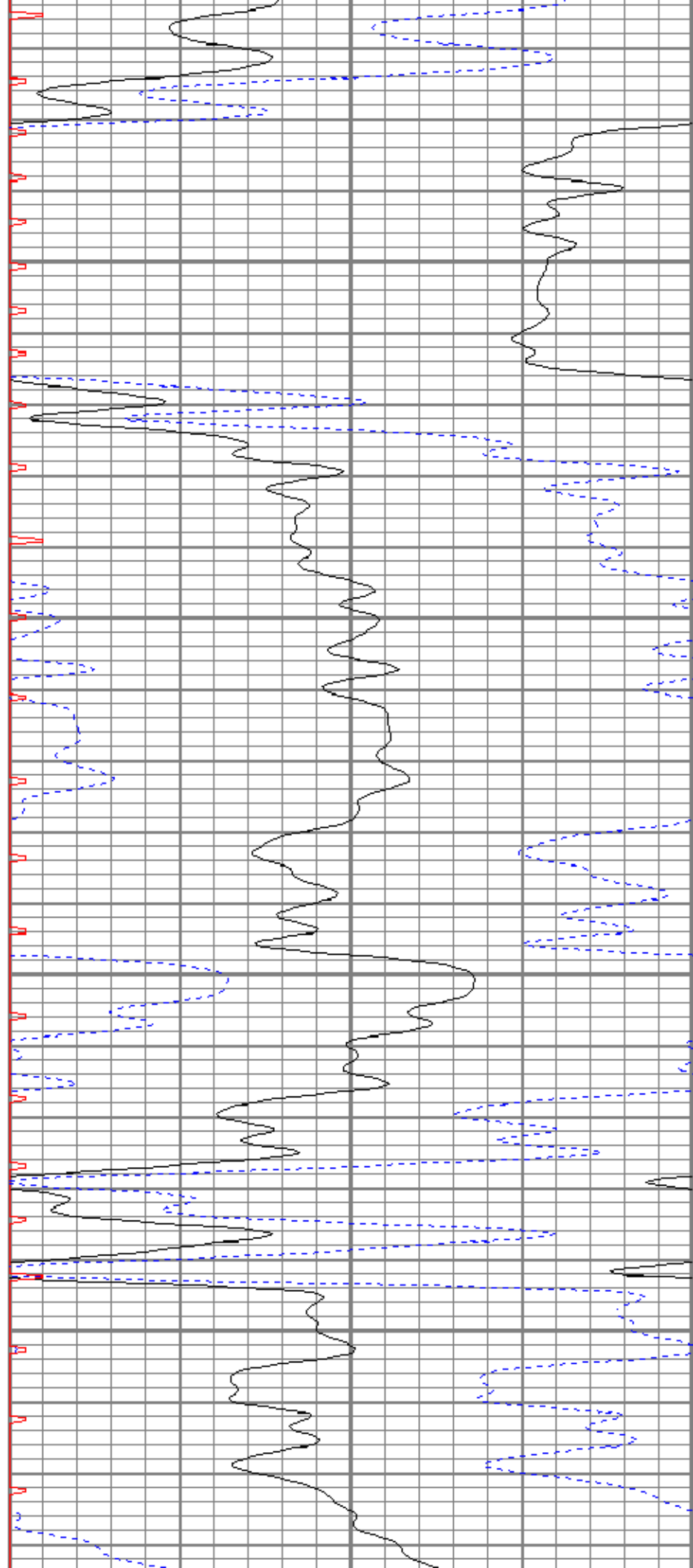


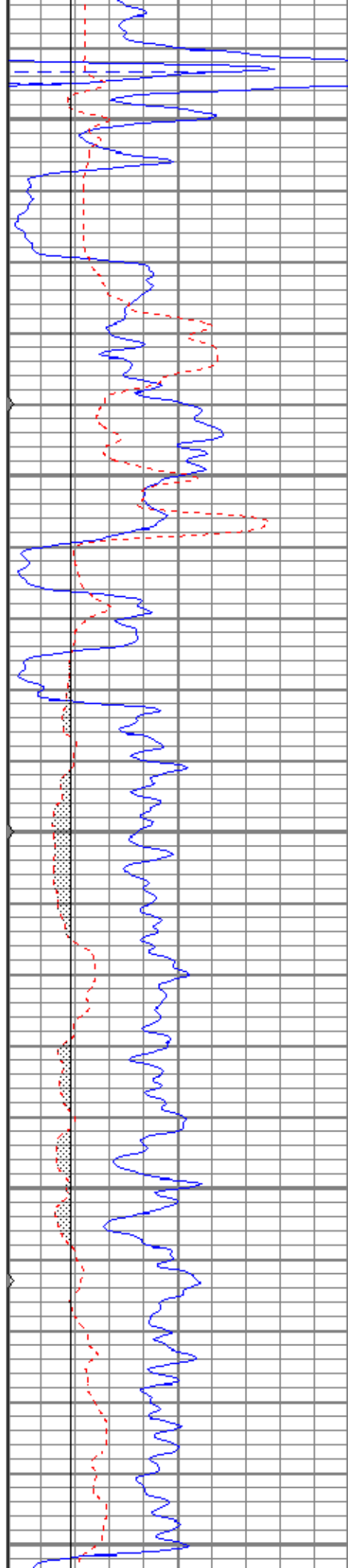
2650

2700

2750

2800





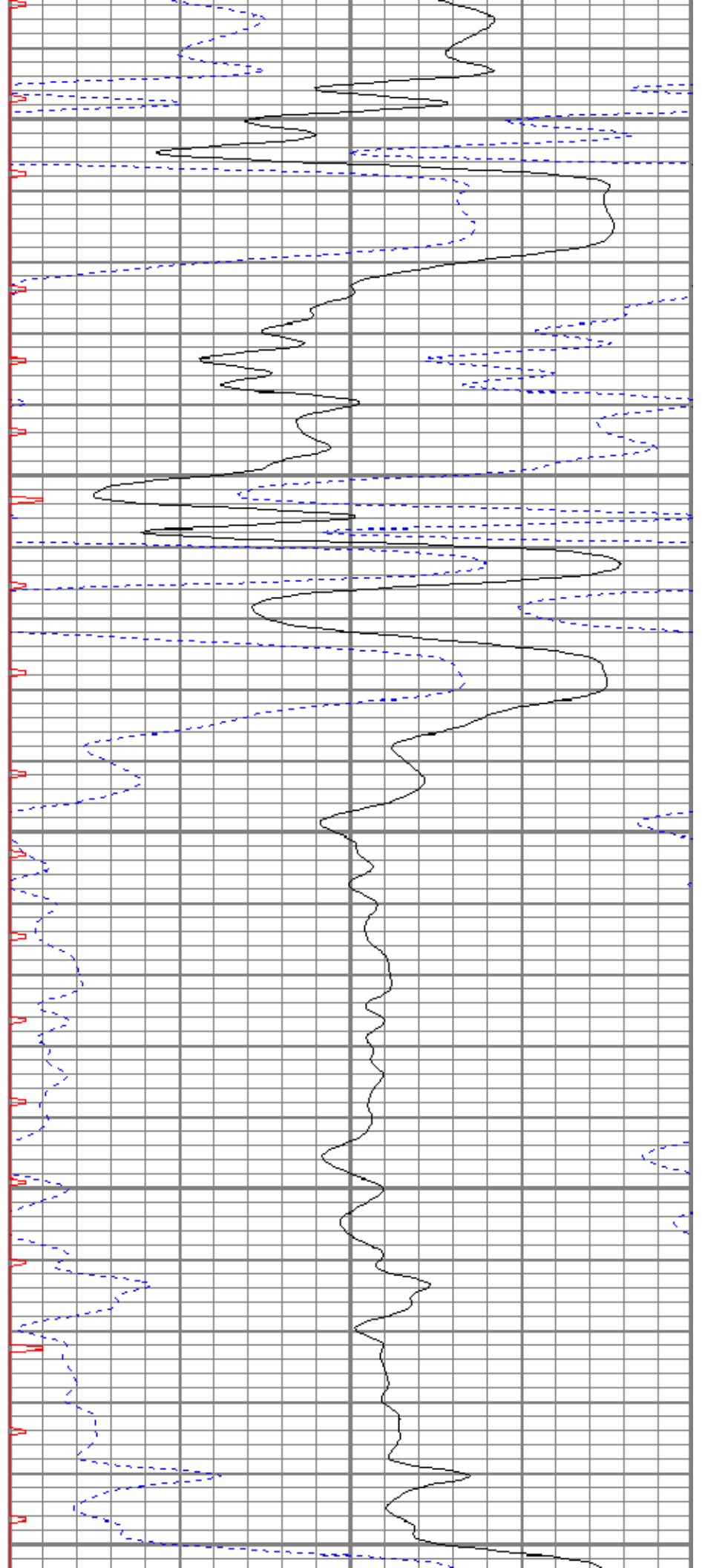
2850

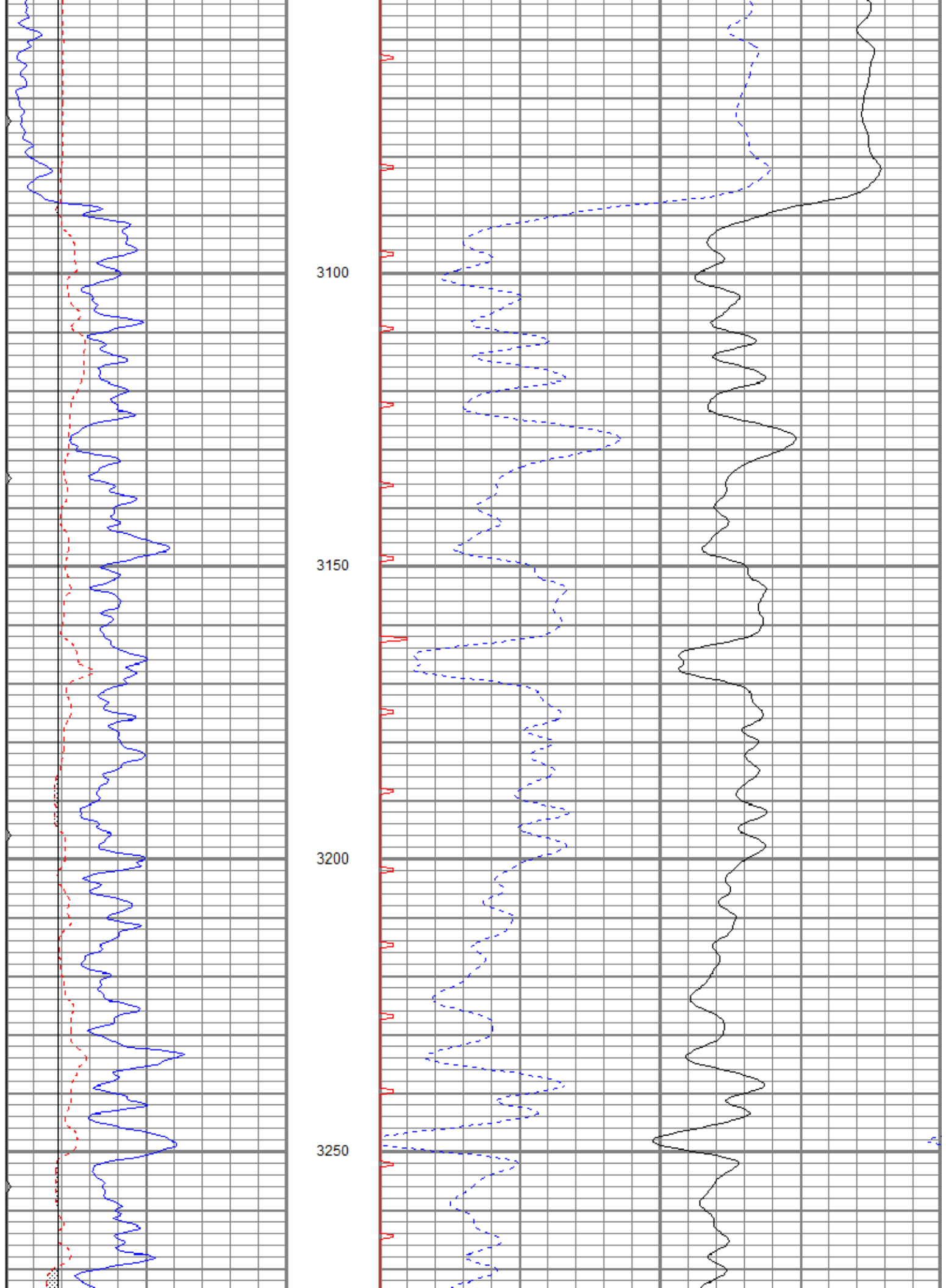
2900

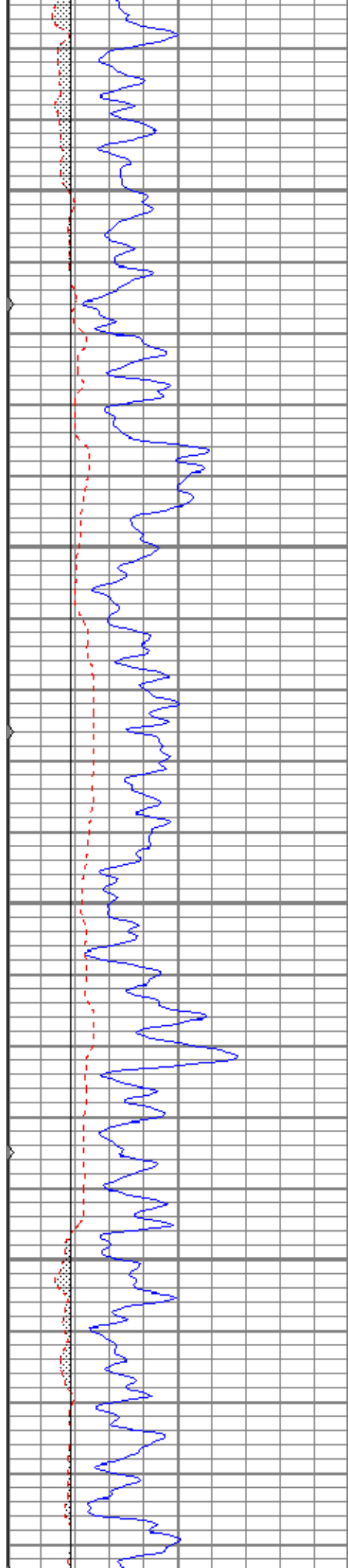
2950

3000

3050





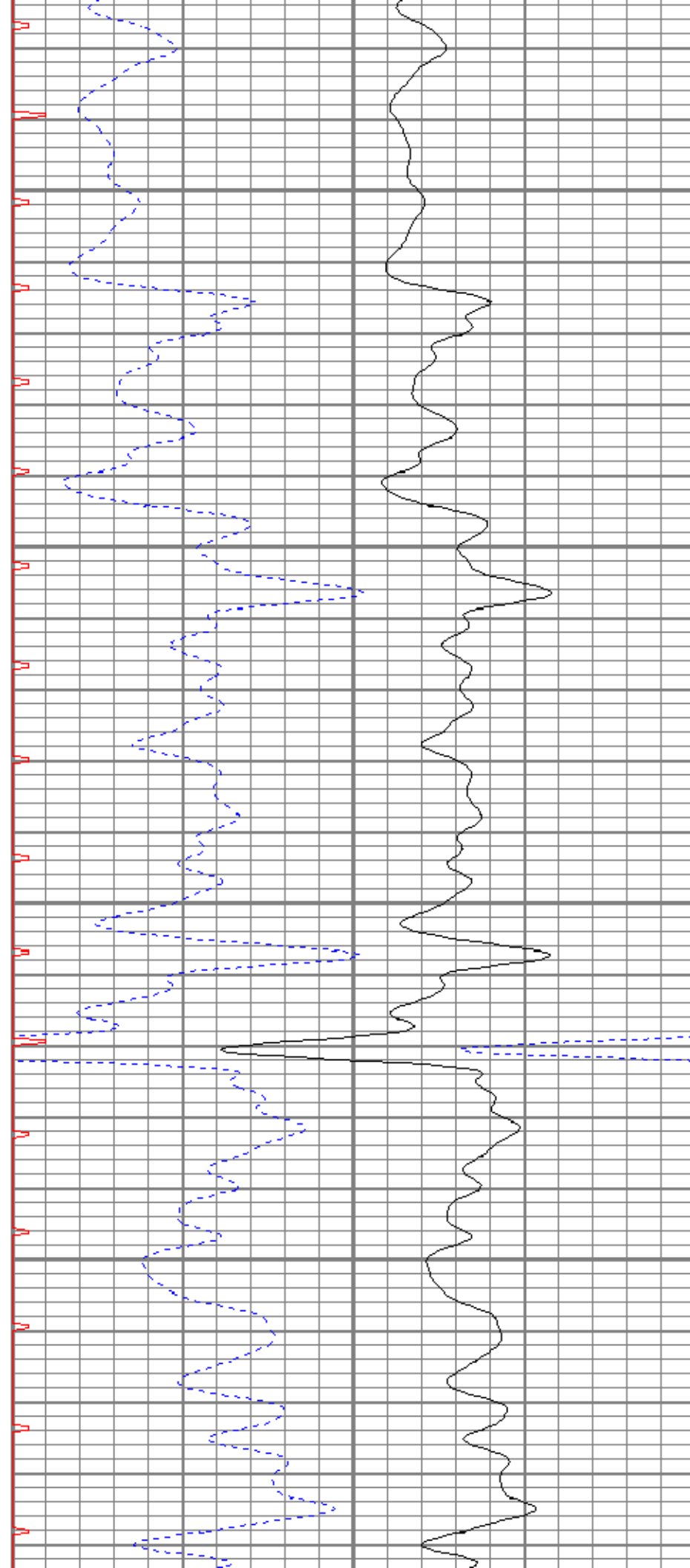


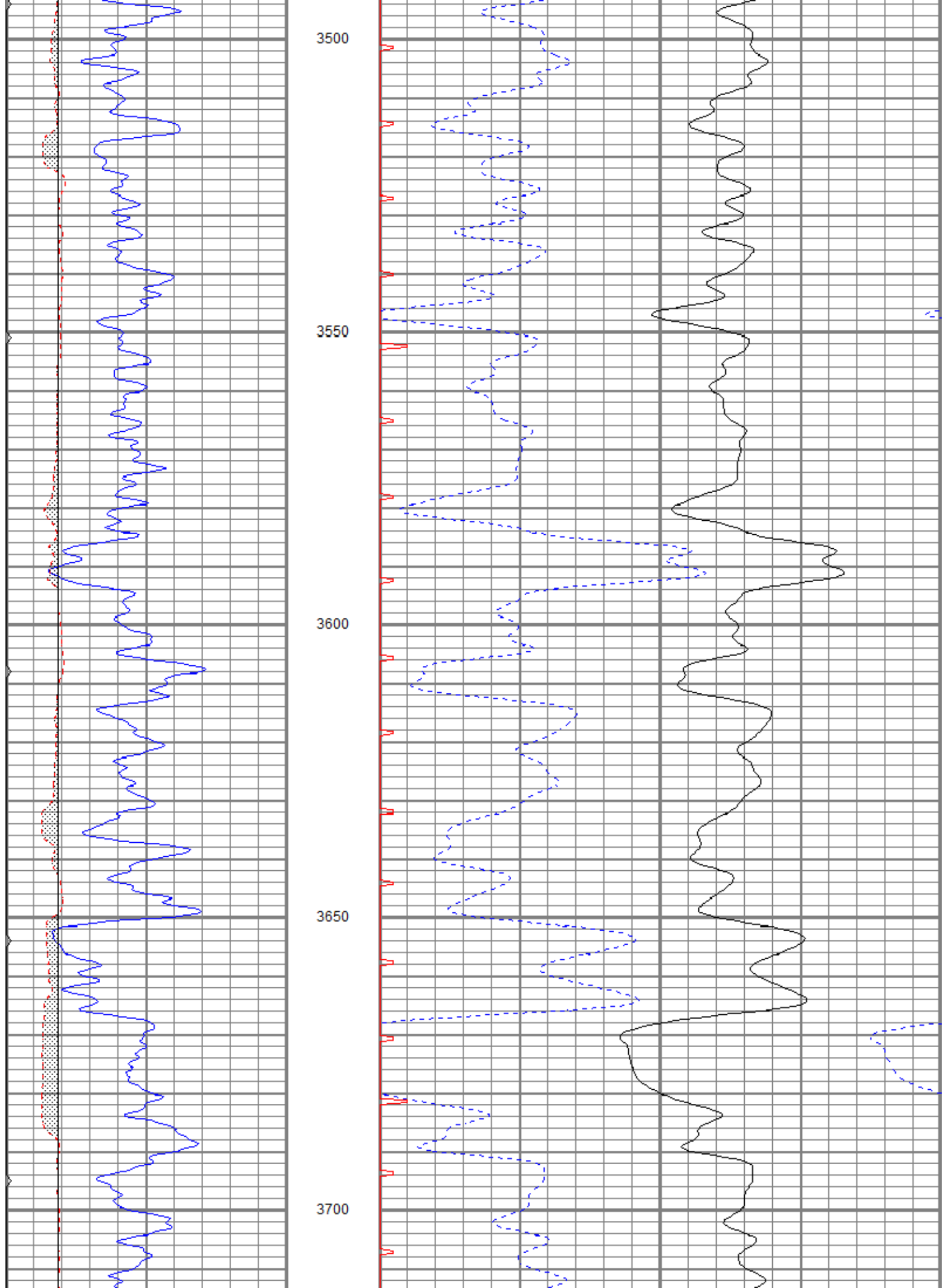
3300

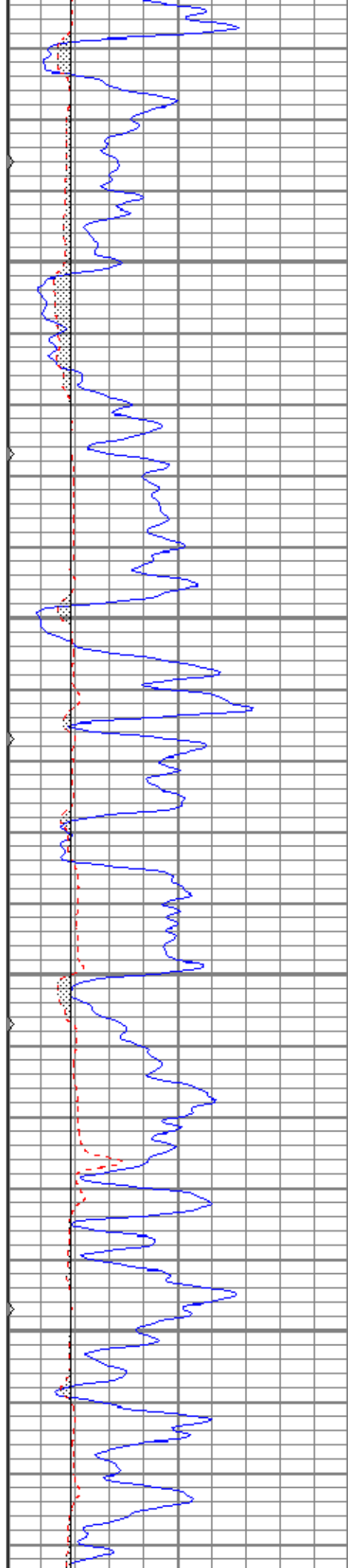
3350

3400

3450





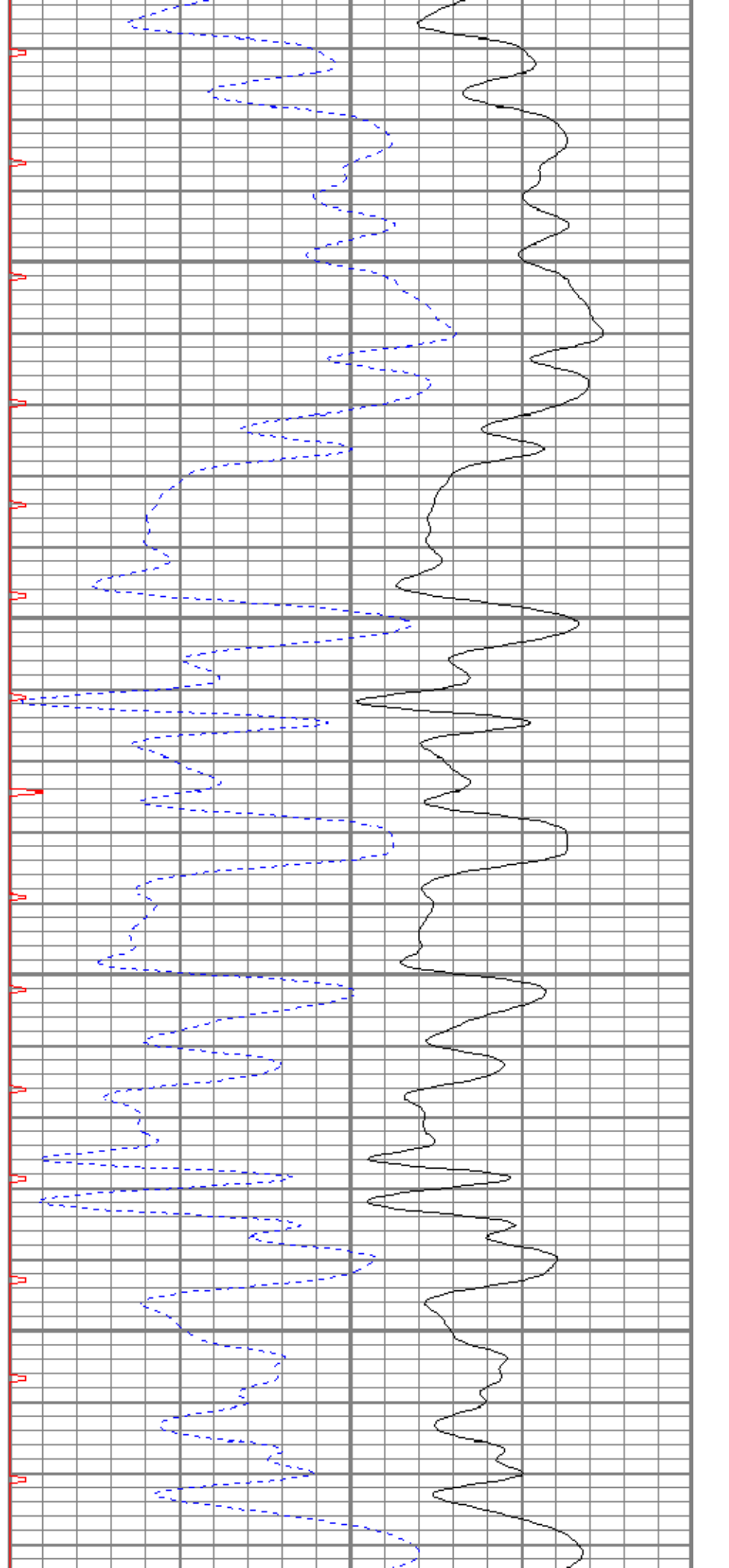


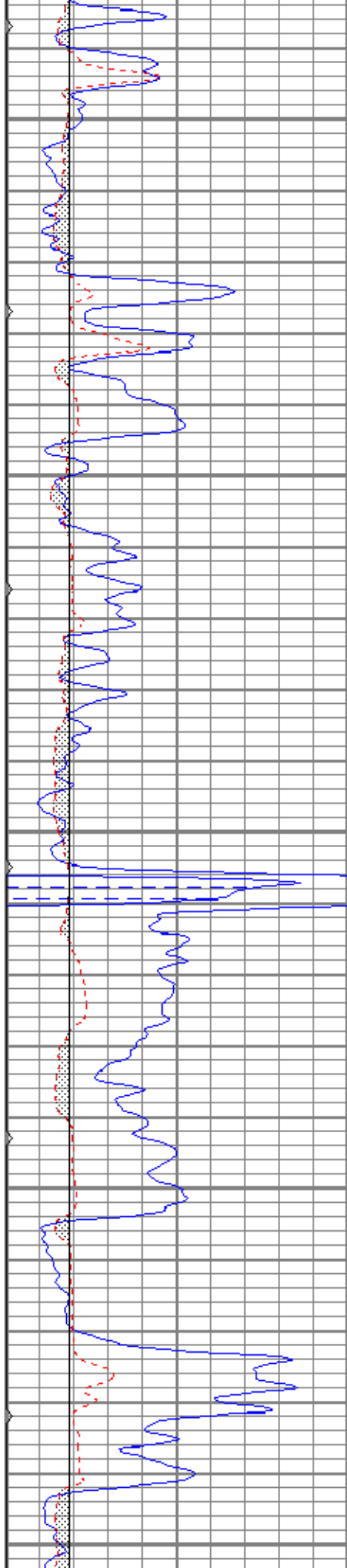
3750

3800

3850

3900





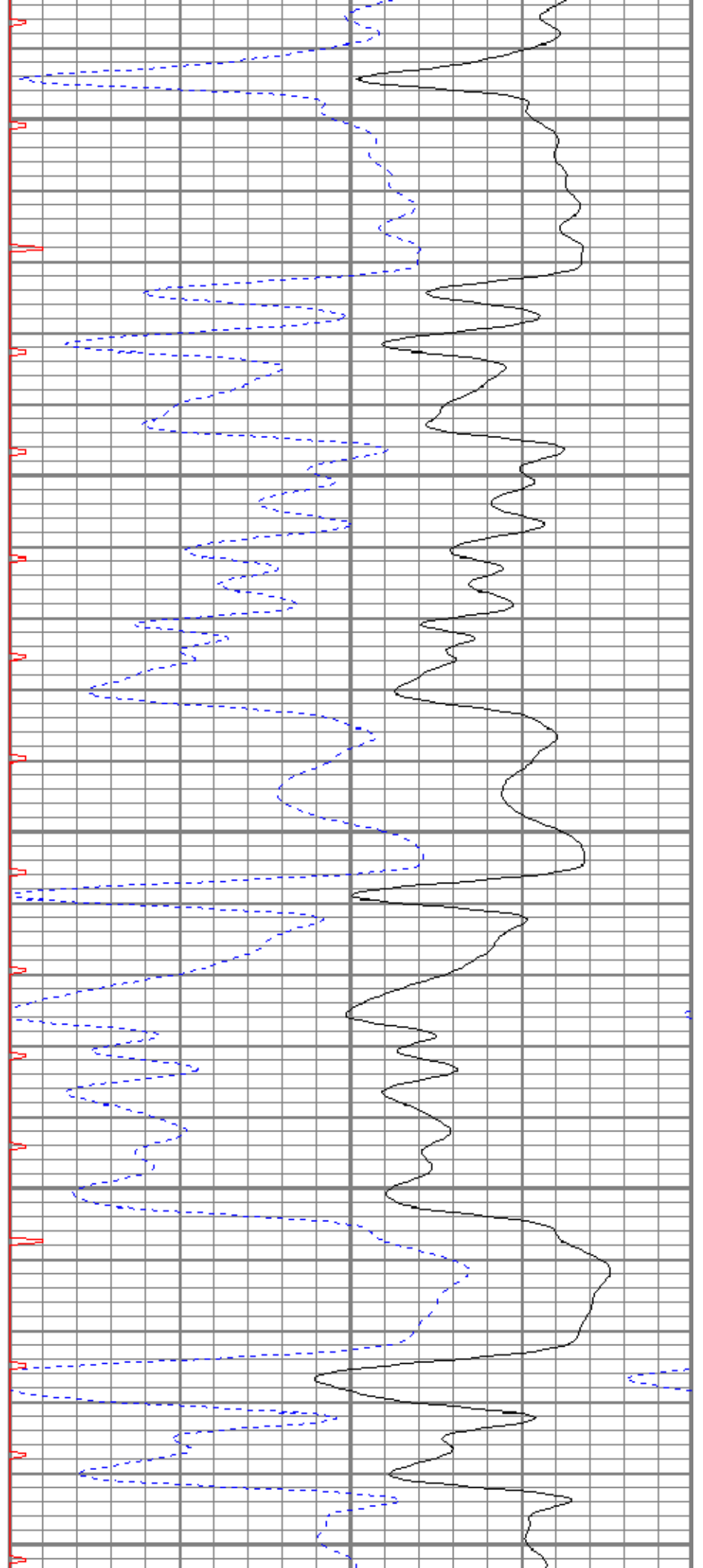
3950

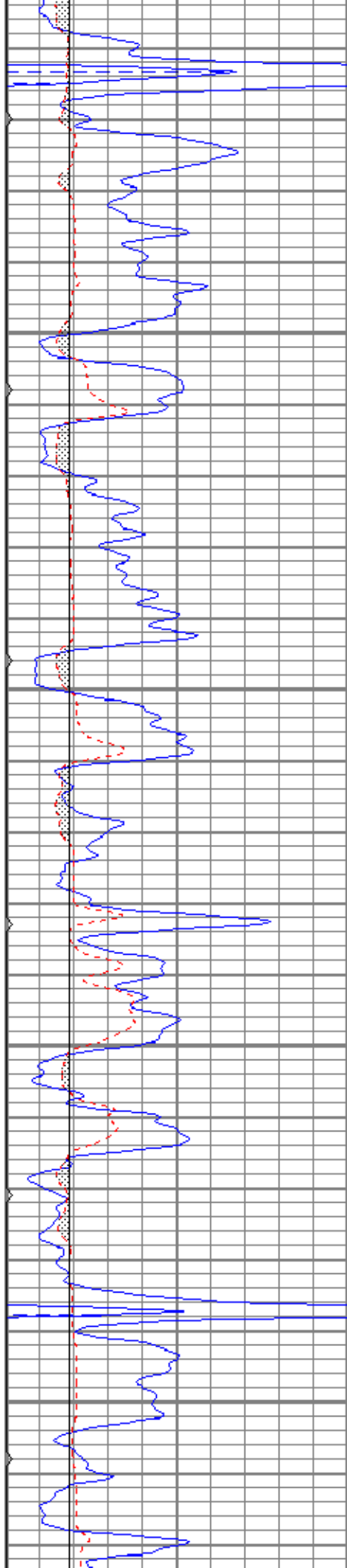
4000

4050

4100

4150



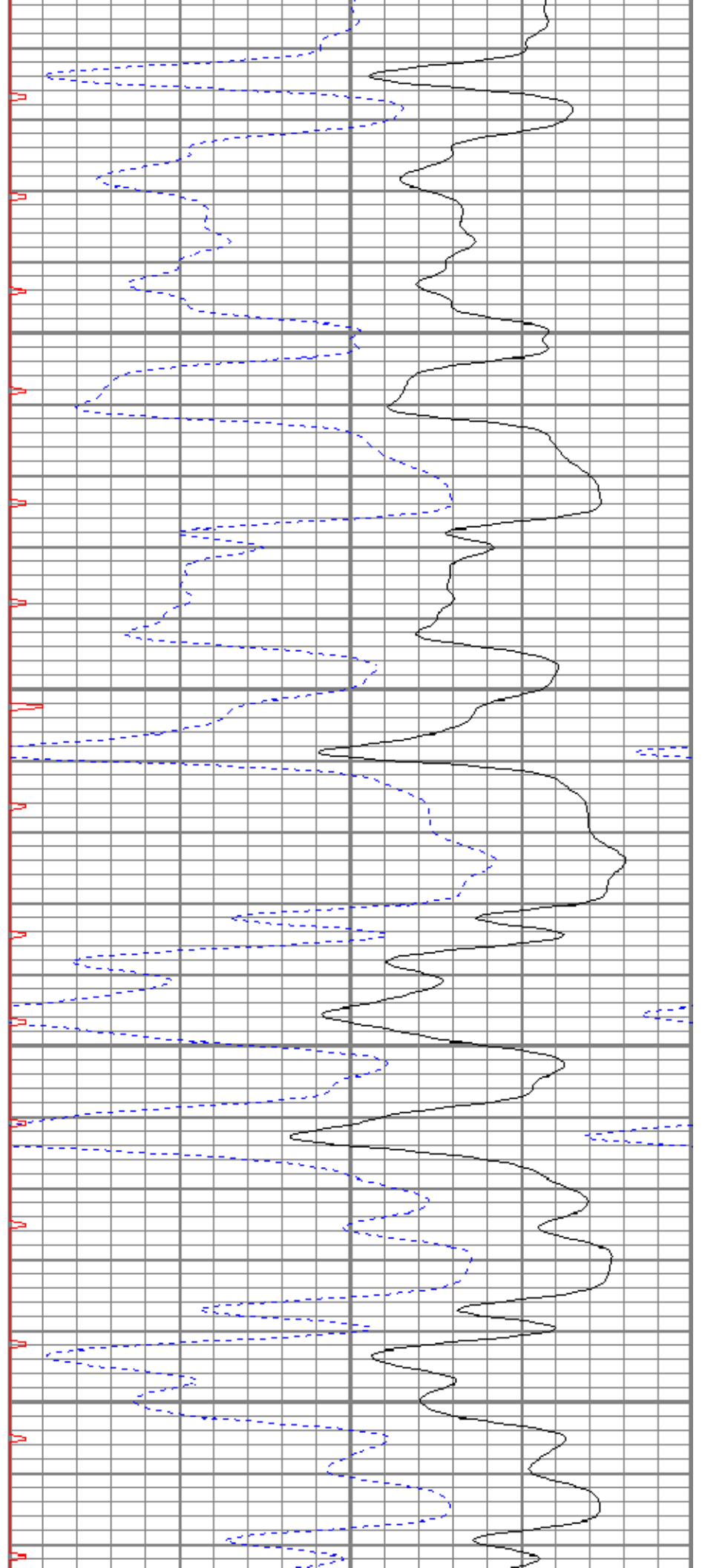


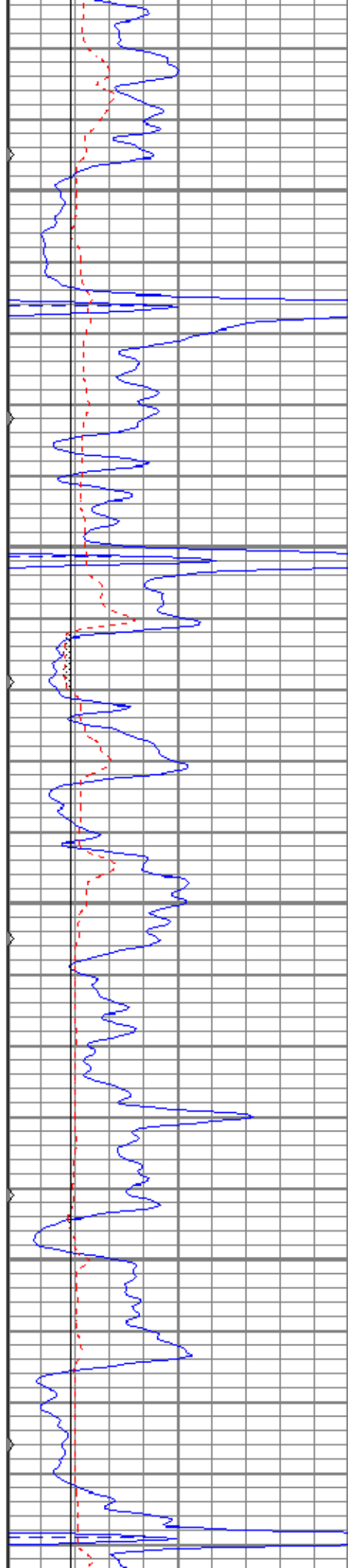
4200

4250

4300

4350



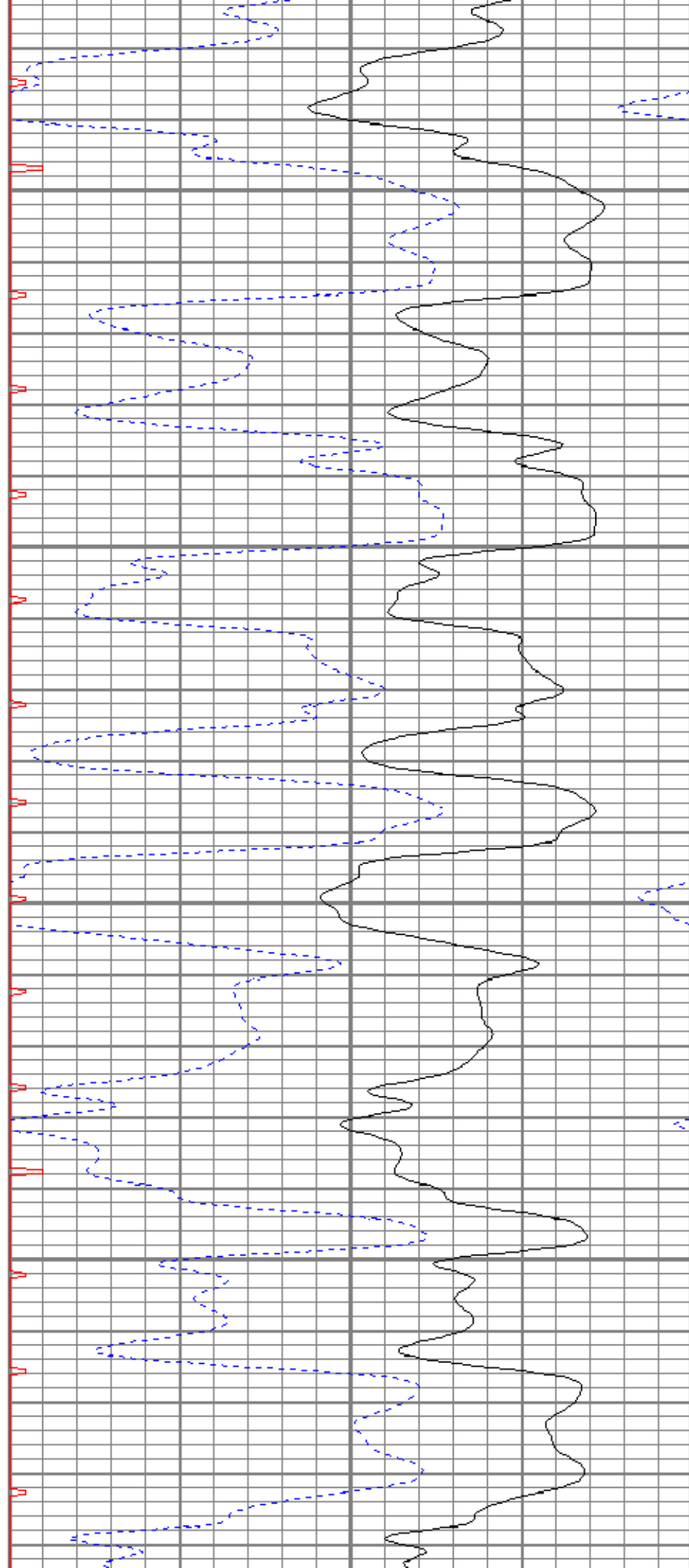


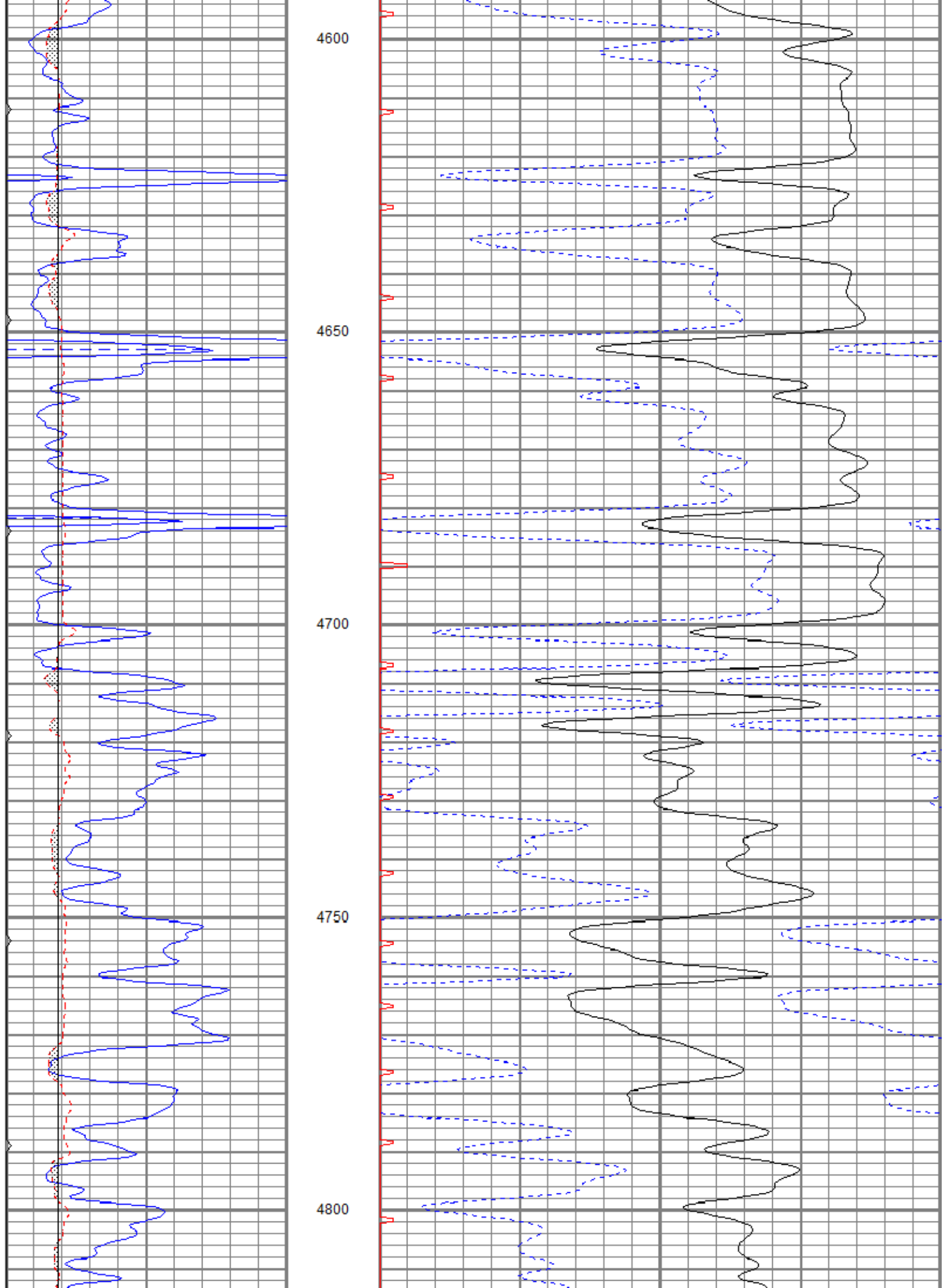
4400

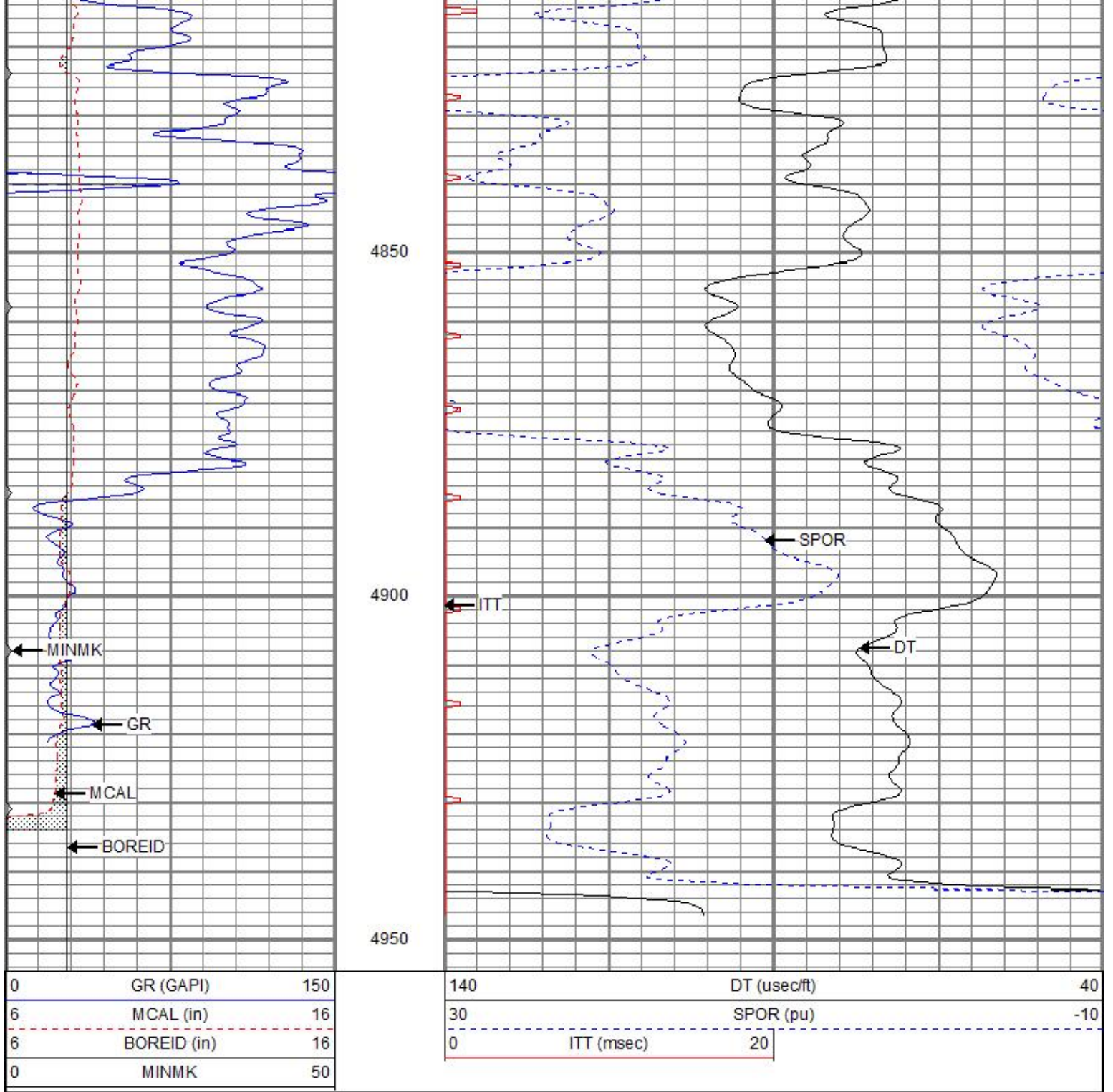
4450

4500

4550





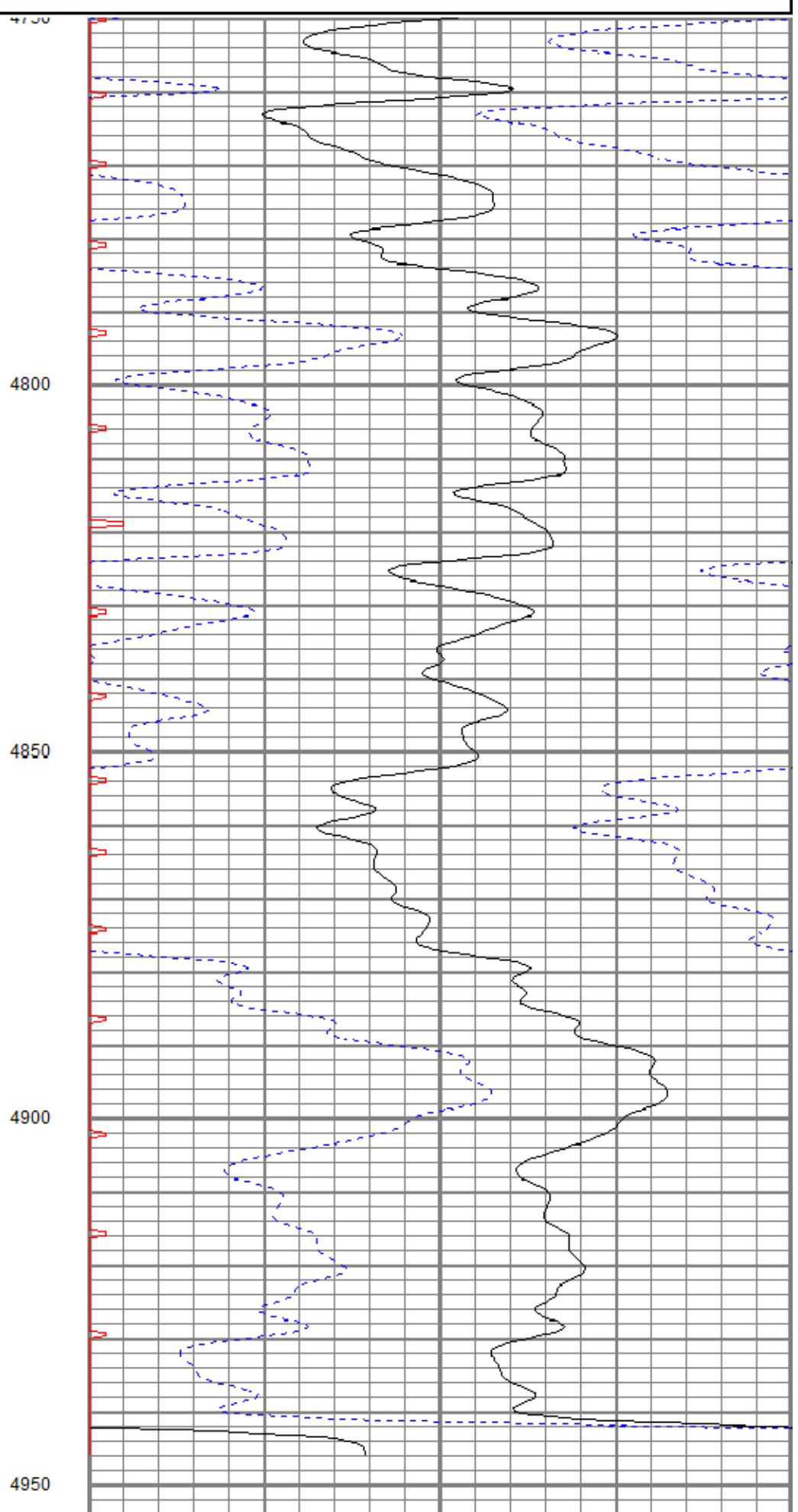
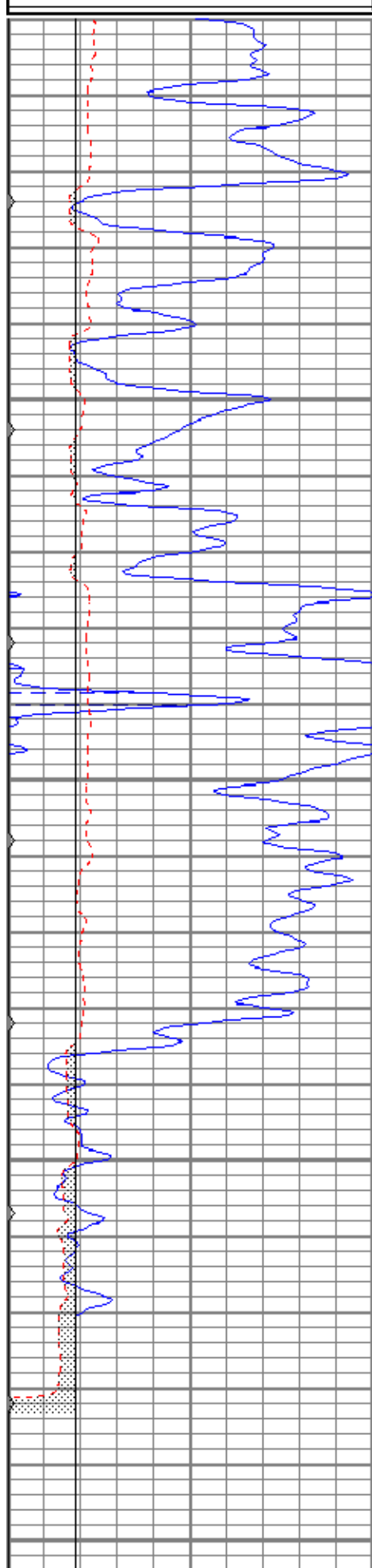


REPEAT SECTION

Database File beavery#14-10h.db
 Dataset Pathname pass6.1
 Presentation Format kbcs
 Dataset Creation Fri Jun 29 18:21:59 2018
 Charted by Depth in Feet scaled 1:240

0	GR (GAPI)	150
6	MCAL (in)	16
6	BOREID (in)	16
0	MINMK	50

140	DT (usec/ft)	40
30	SPOR (pu)	-10
0	ITT (msec)	20



0	GR (GAPI)	150
6	MCAL (in)	16
6	BOREID (in)	16

140	DT (usec/ft)	40
30	SPOR (pu)	-10
0	ITT (msec)	20

Calibration Report

Database File beavery#14-1oh.db
 Dataset Pathname pass7.1
 Dataset Creation Fri Jun 29 19:22:23 2018

Microlog Calibration Report

Serial-Model: 9151-Gerhart
 Performed: Fri Jun 29 17:43:45 2018

	Readings			References			Results	
	Zero	Cal		Zero	Cal		m	b
Normal	-0.0008	0.4744	V	0.0000	10.0000	Ohm-m	21.0468	0.0159
Inverse	-0.0065	0.6278	V	0.0000	10.0000	Ohm-m	15.7660	0.1027
Caliper	0.9710	1.9556	V	7.6000	13.5000	in	5.9921	1.7819

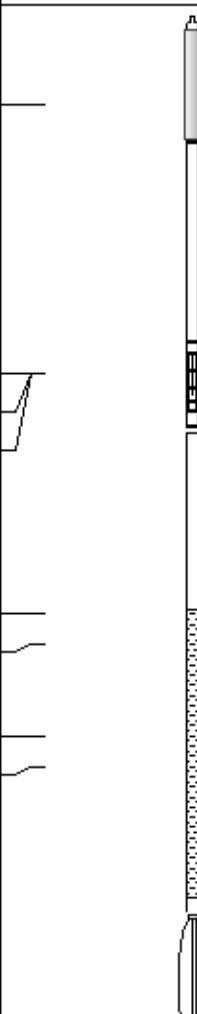
Gamma Ray Calibration Report

Serial Number: 2001
 Tool Model: OH
 Performed: Sun Nov 12 16:26:41 2017

Calibrator Value: 1.0 GAPI

Background Reading: 0.0 cps
 Calibrator Reading: 1.0 cps

Sensitivity: 0.7000 GAPI/cps

Sensor	Offset (ft)	Schematic	Description	Length (ft)	O.D. (in)	Weight (lb)	
			CHD-STD	0.50	1.69	1.00	
GR	30.83		GR-OH (2001) 2001	3.56	3.25	40.00	
			ML-Gerhart (9151) Gerhart Micro	9.46	4.00	125.00	
MCAL	22.04						
MI	22.04						
MN	22.04						
WVF4	14.25						
WVF3	13.25						
			SLT-G (372) Sonic	15.71	3.50	250.00	
WVF2	10.25						
WVF1	9.25						
			CENT-OHlong Open Hole long Centralizer	4.50	3.50	50.00	

