



**MICRO
RESISTIVITY
LOG**

Company Bickle Energies, LLC.

Well Avery #14-1

Field Unnamed

County Cheyenne

State Kansas

Company Bickle Energies, LLC.
Well Avery #14-1
Field Unnamed
County Cheyenne
State Kansas

Location: API #: 15 023 21488

SEC 14 TWP 5S RGE 37W

Permanent Datum Ground Level Elevation 3333'

Log Measured From KB 5' AGL

Drilling Measured From KB

Other Services
DIL
CDNL
BCS
Elevation

K.B. 3338'
D.F. 3337'
G.L. 3333'

Date	6-29-18
Run Number	Three
Depth Driller	4950'
Depth Logger	4955'
Bottom Logged Interval	4933'
Top Log Interval	3700'
Casing Driller	8 5/8" @ 349'
Casing Logger	349'
Bit Size	7 7/8"
Type Fluid in Hole	Chemical
Density / Viscosity	9.5/5.3
PH / Fluid Loss	9.5/7.6
Source of Sample	Pit
Rm @ Meas. Temp	.8@88degf
Rmf @ Meas. Temp	0.6@88degf
Rmc @ Meas. Temp	1.0@88degf
Source of Rmf / Rmc	Calculated
Rm @ BHT	0.53@134degf
Time Circulation Stopped	12:00 p.m
Time Logger on Bottom	5:10 p.m
Maximum Recorded Temperature	134degf
Equipment Number	T-127
Location	Hays, KS.
Recorded By	C.Patterson
Witnessed By	Mr. Kleth Reavis

<<< Fold Here >>>

All interpretations are opinions based on inferences from electrical or other measurements and we cannot and do not guarantee the accuracy or correctness of any interpretation, and we shall not, except in the case of gross or willful negligence on our part, be liable or responsible for any loss, costs, damages, or expenses incurred or sustained by anyone resulting from any interpretation made by any of our officers, agents or employees. These interpretations are also subject to our general terms and conditions set out in our current Price Schedule.

Comments

North Of Brewster,KS to EE Rd., West EE Rd. 3 mi. to 34 Rd., Then North on 34 Rd. 3 1/4 mi. West Into Location

Thanks for using Gemini Wireline LLC
785-625-1182

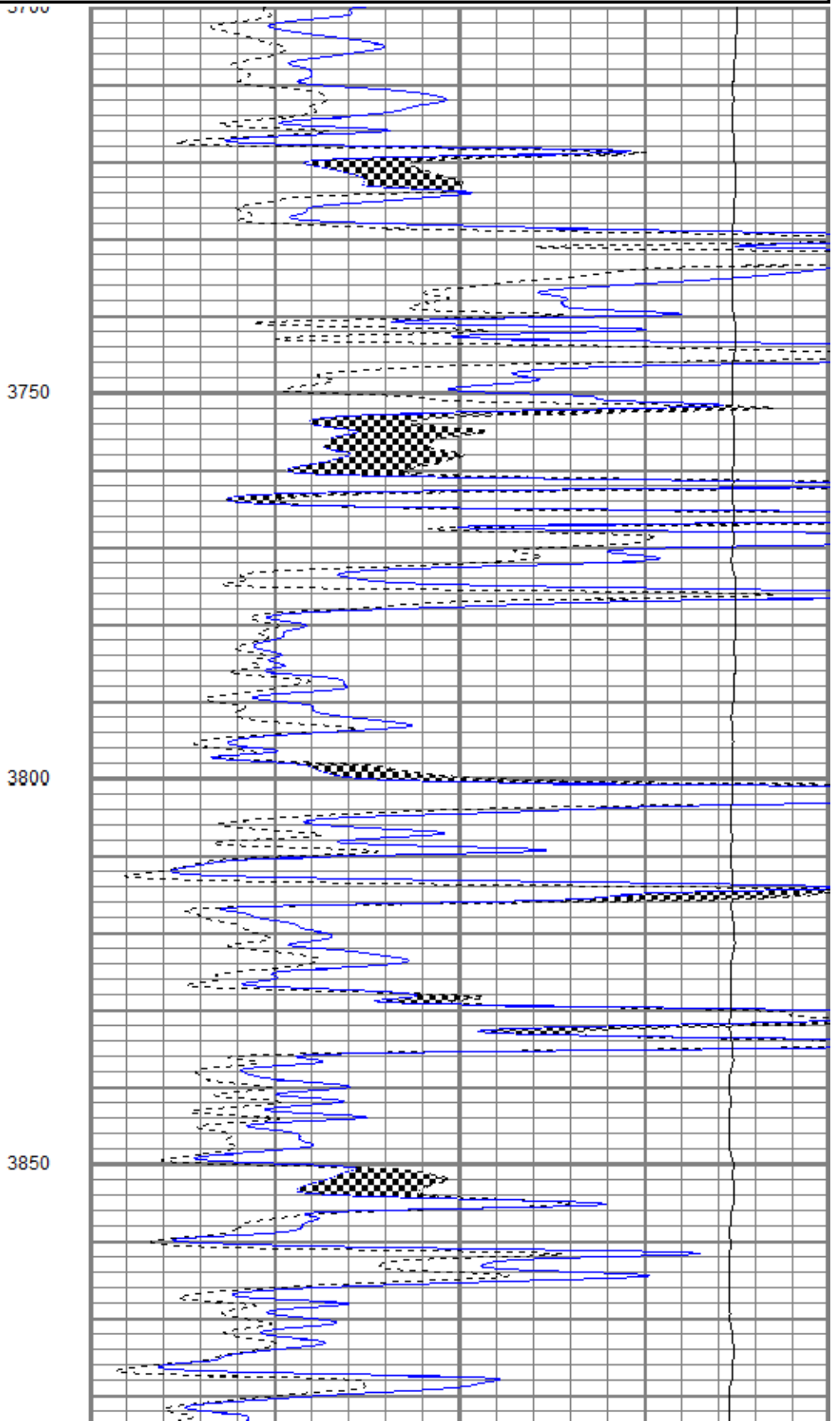
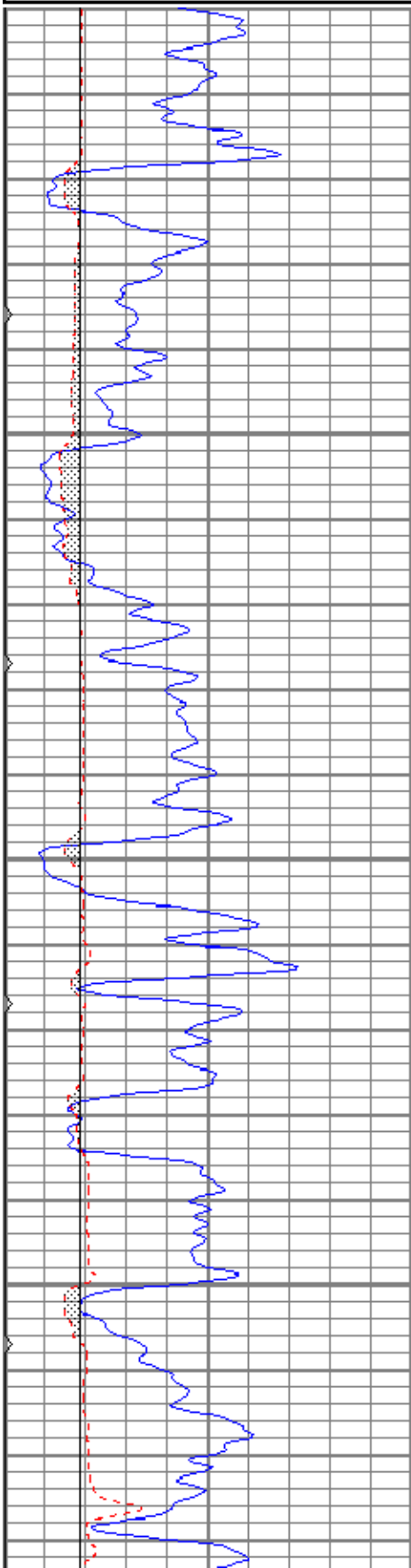


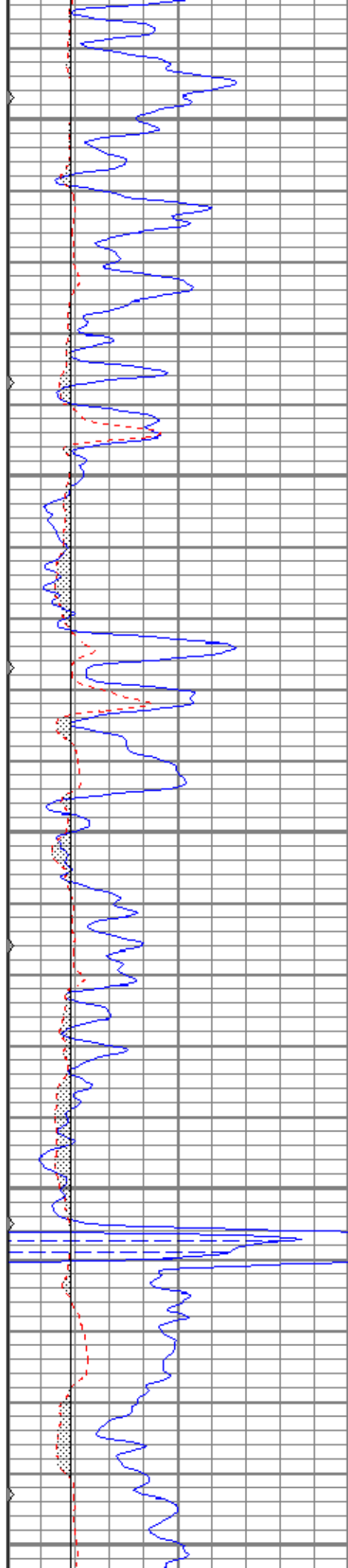
MAIN PASS

Database File beavery#14-10h.db
 Dataset Pathname pass7.1
 Presentation Format kml
 Dataset Creation Fri Jun 29 19:22:23 2018
 Charted by Depth in Feet scaled 1:240

0	GR (GAPI)	150
6	MCAL (in)	16
6	BOREID (in)	16
0	MINMK	50

0	MN 2" (Ohm-m)	20
0	MI 1" (Ohm-m)	20
10000	LTEN (lb)	0





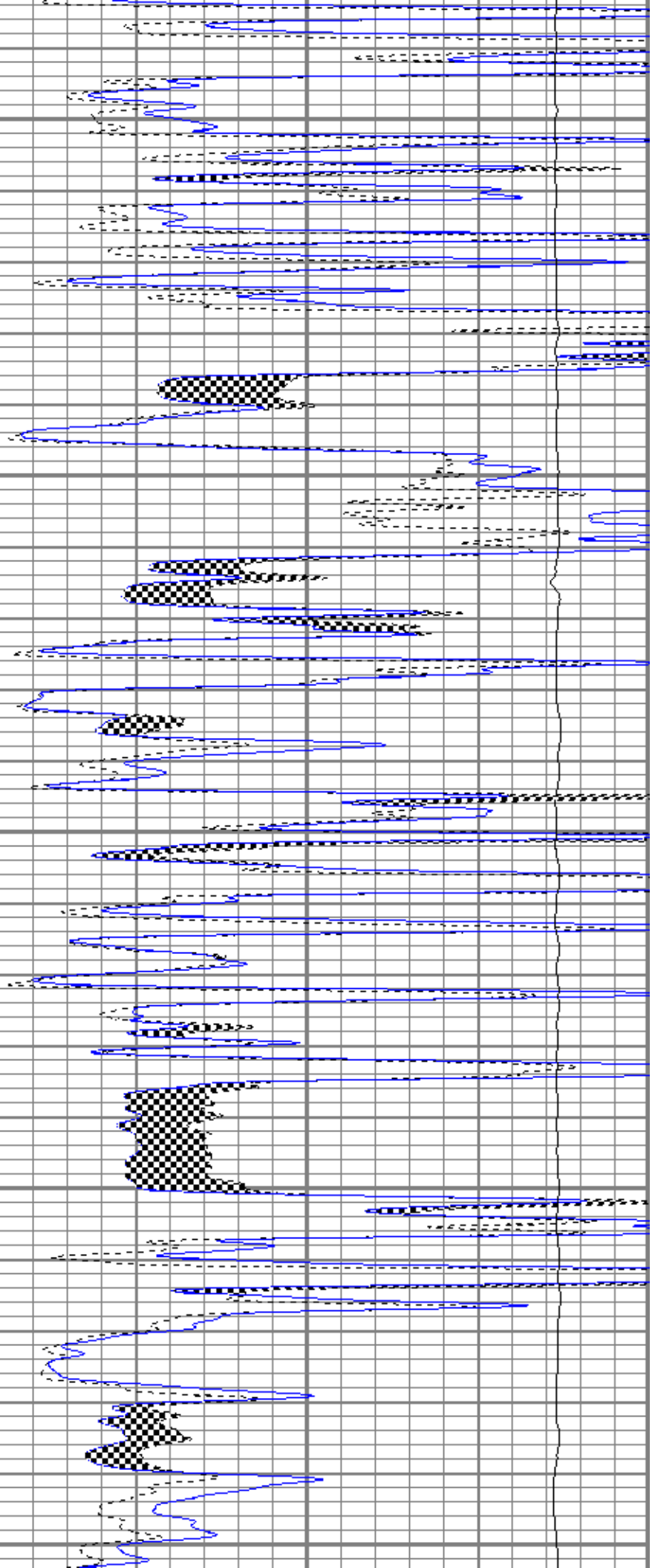
3900

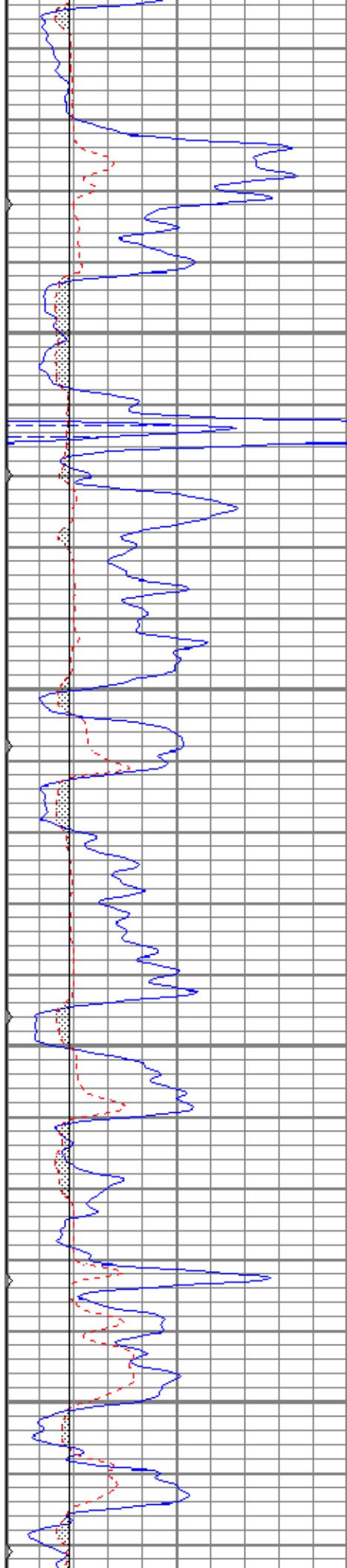
3950

4000

4050

4100



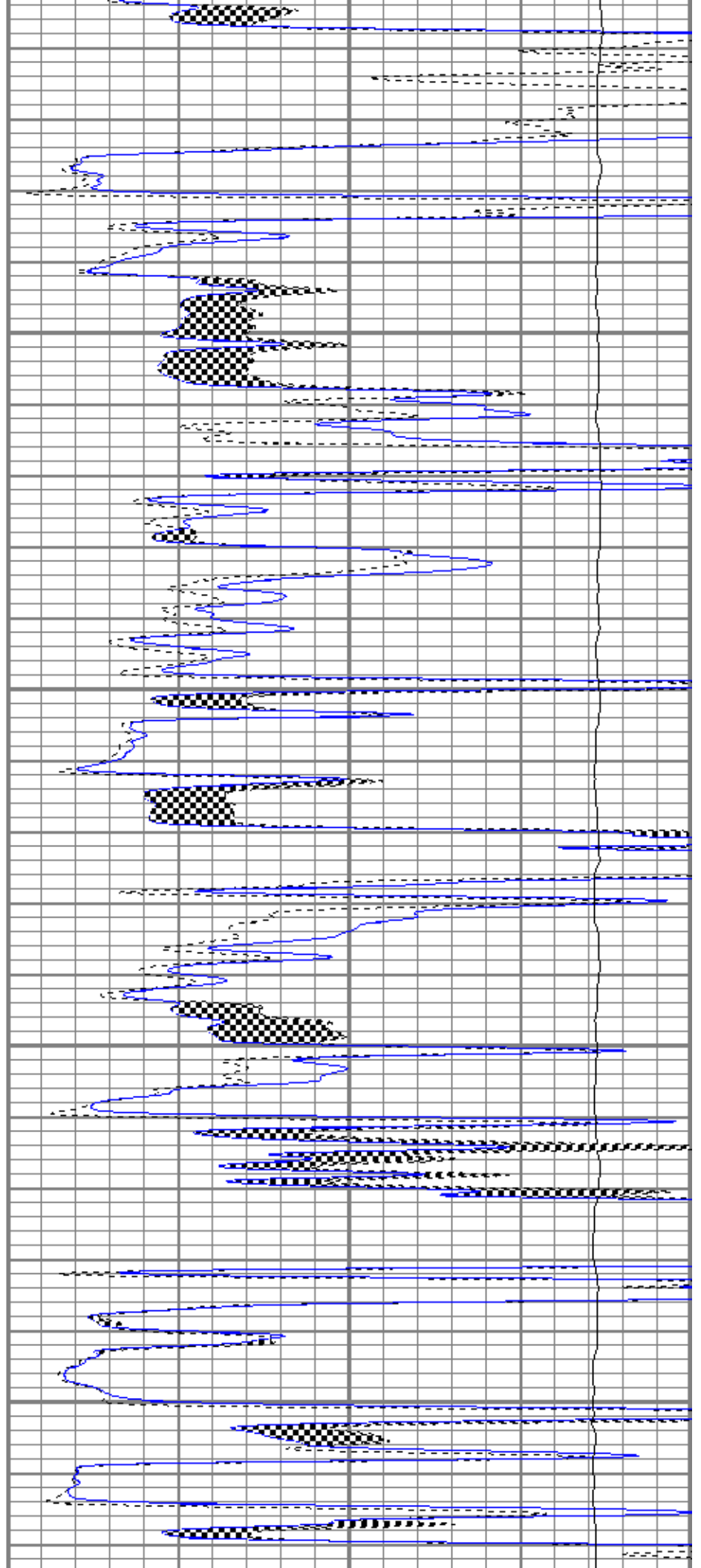


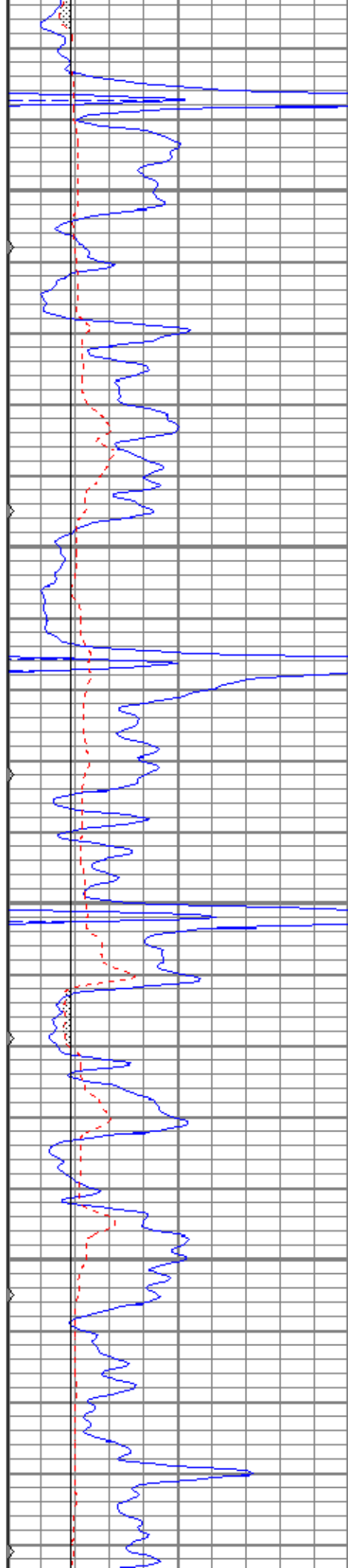
4150

4200

4250

4300



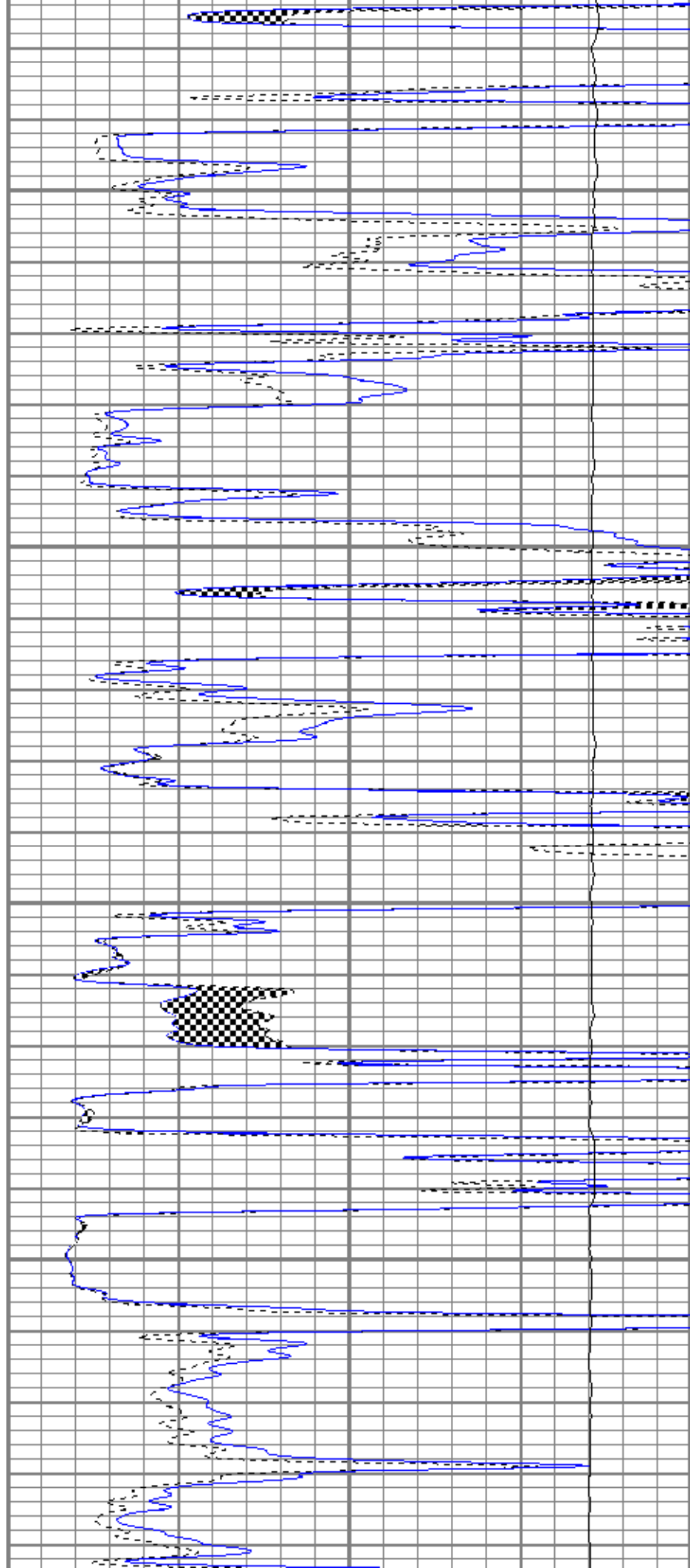


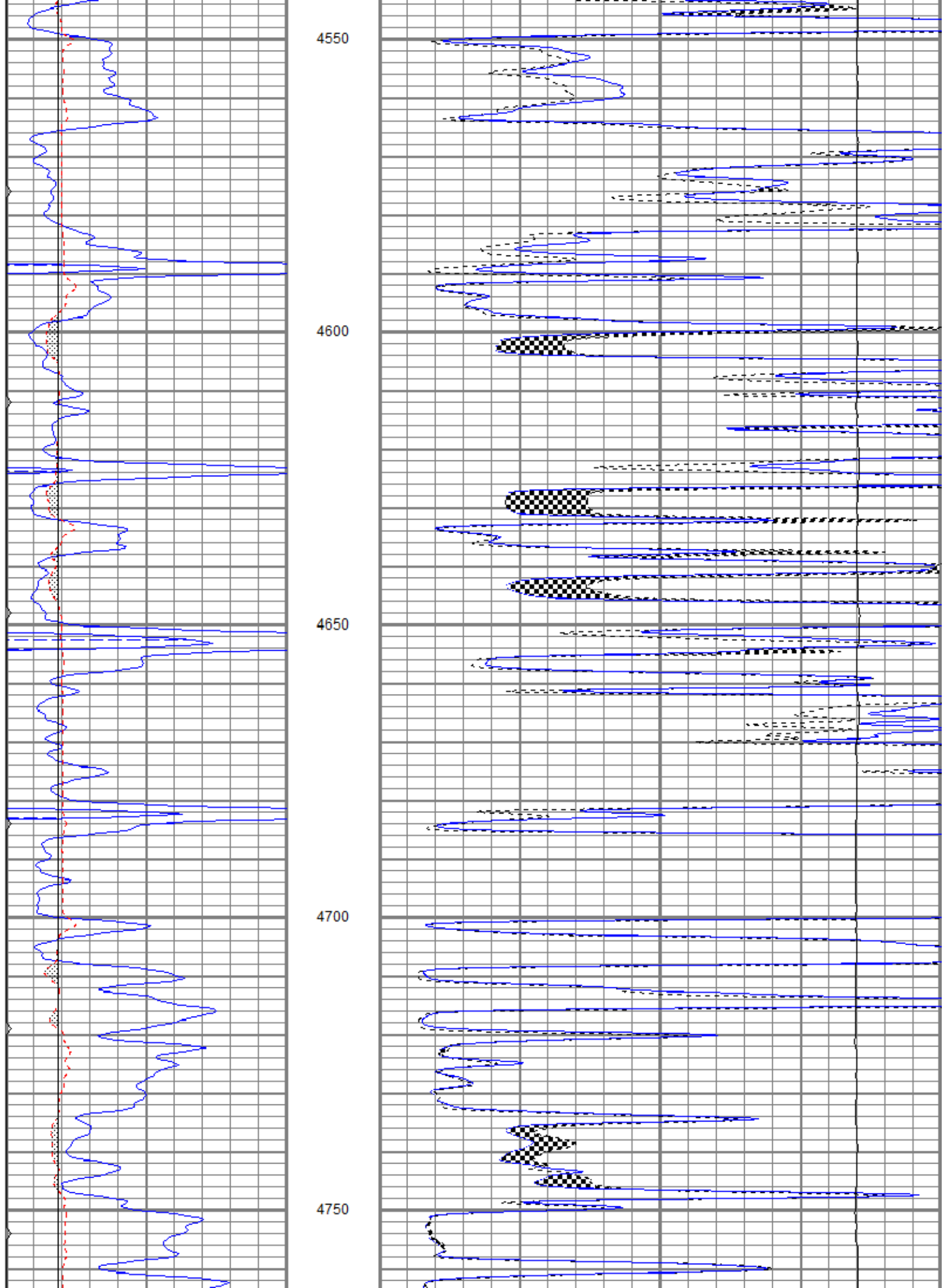
4350

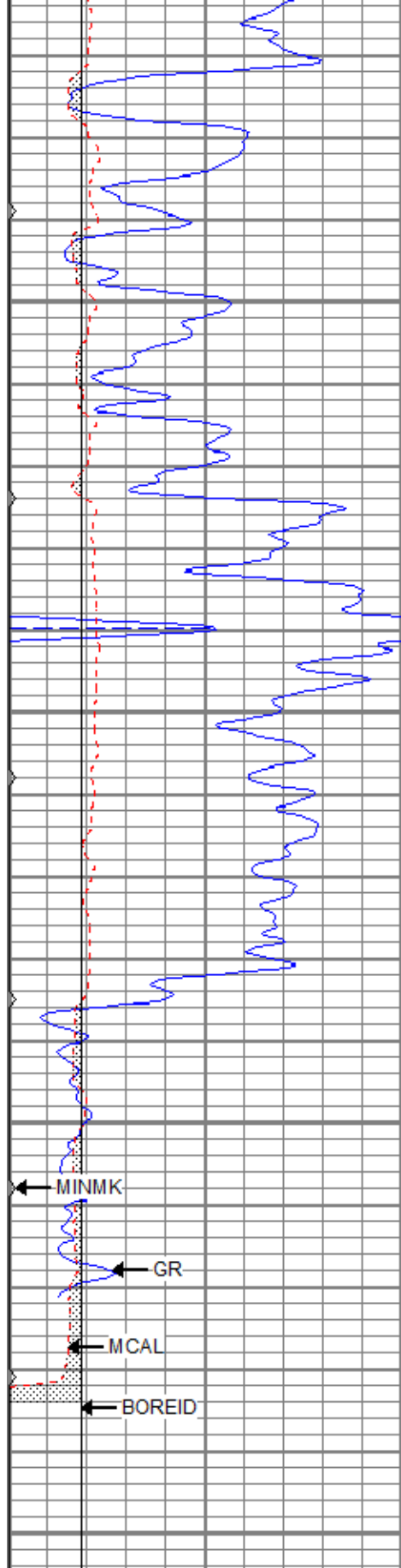
4400

4450

4500







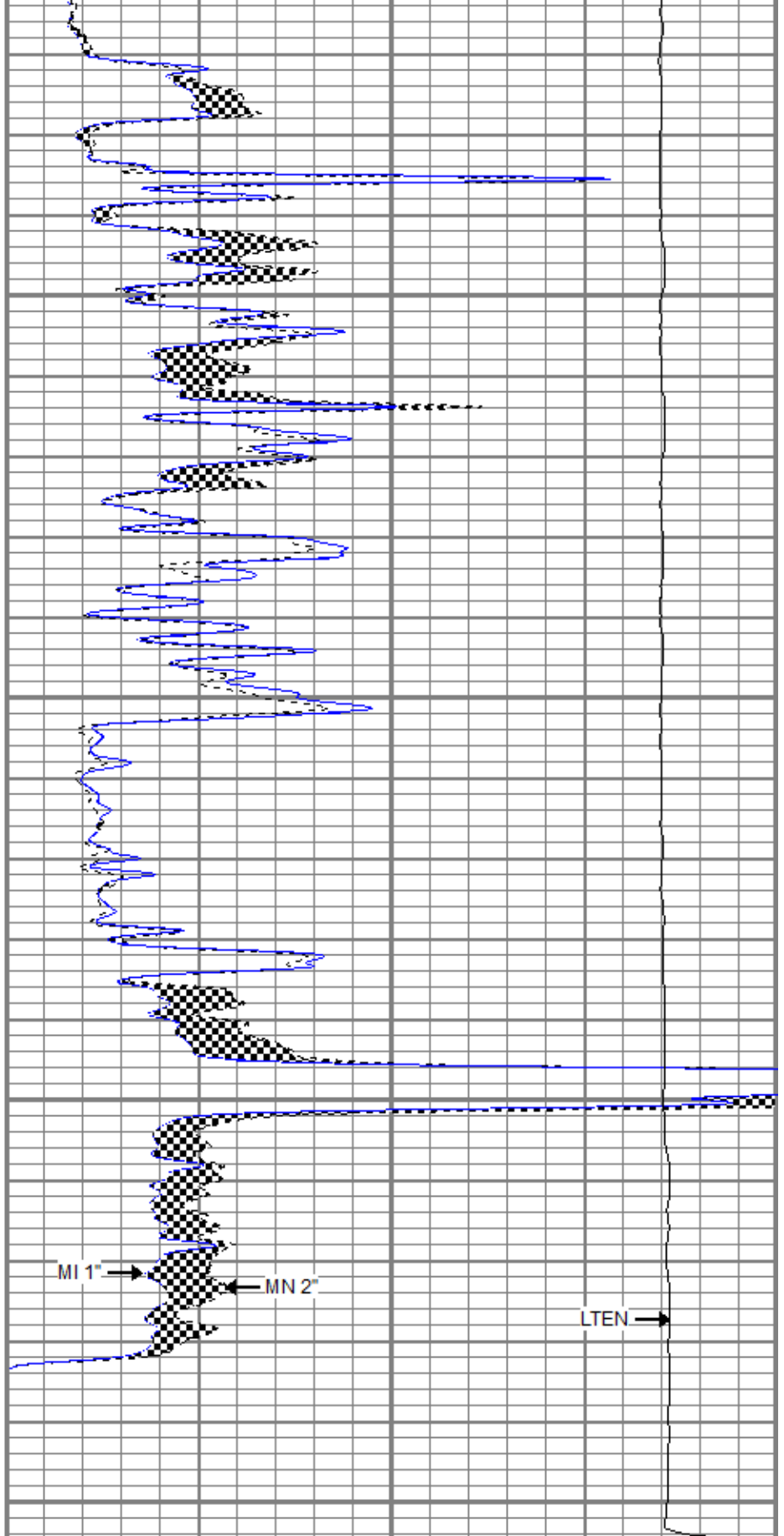
4800

4850

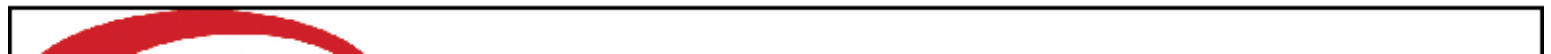
4900

4950

0	GR (GAPI)	150
6	MCAL (in)	16
6	BOREID (in)	16
0	MINMK	50



0	MN 2" (Ohm-m)	20
0	MI 1" (Ohm-m)	20
10000	LTEN (lb)	0



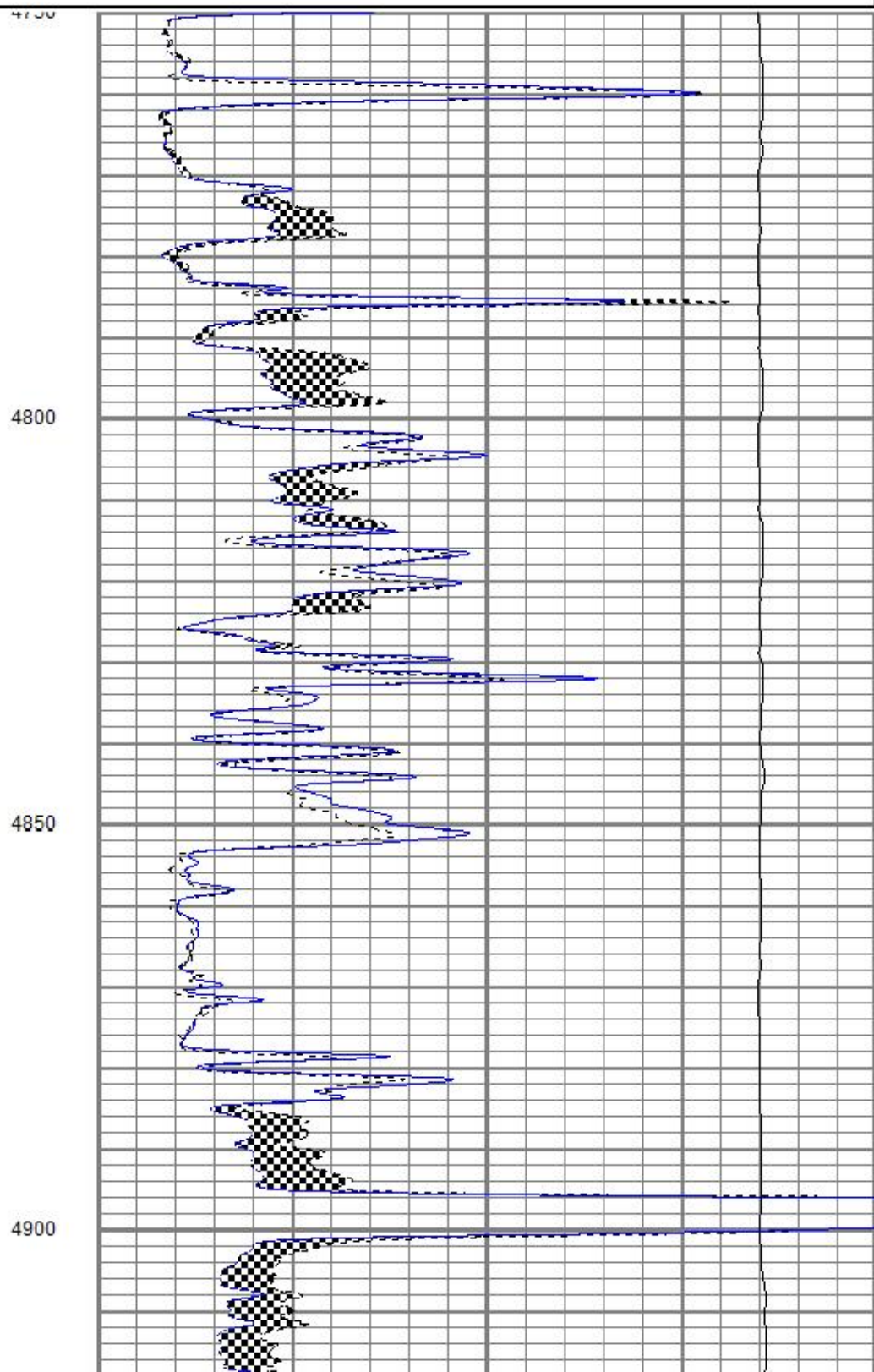
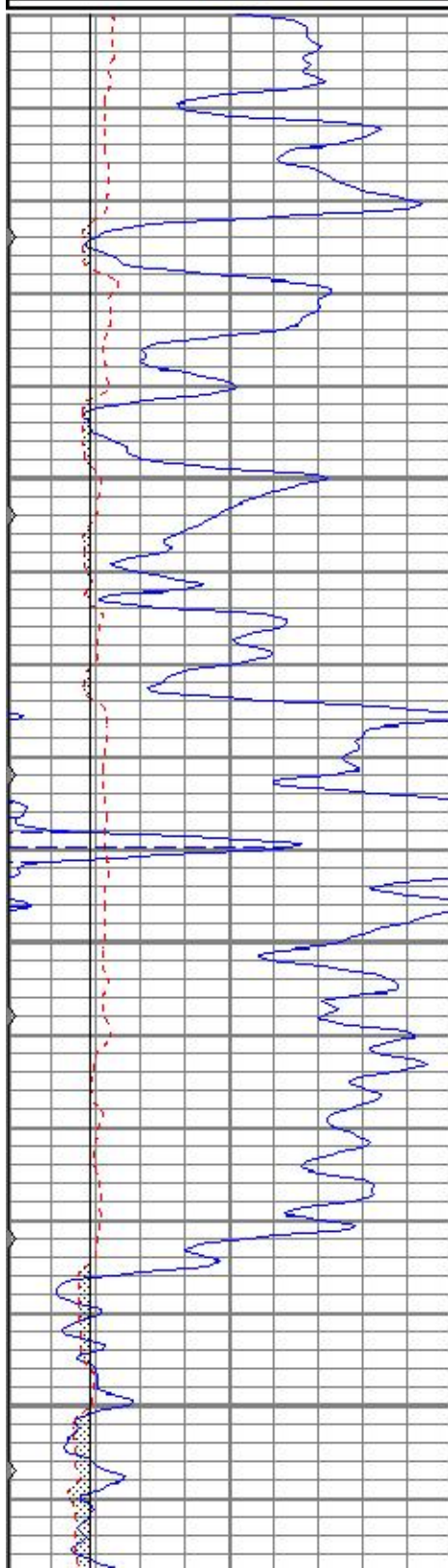


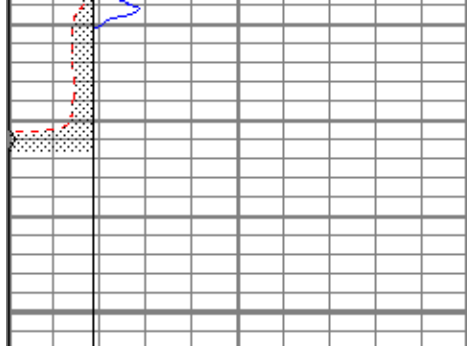
REPEAT SECTION

Database File beavery#14-1oh.db
Dataset Pathname pass6.1
Presentation Format kml
Dataset Creation Fri Jun 29 18:21:59 2018
Charted by Depth in Feet scaled 1:240

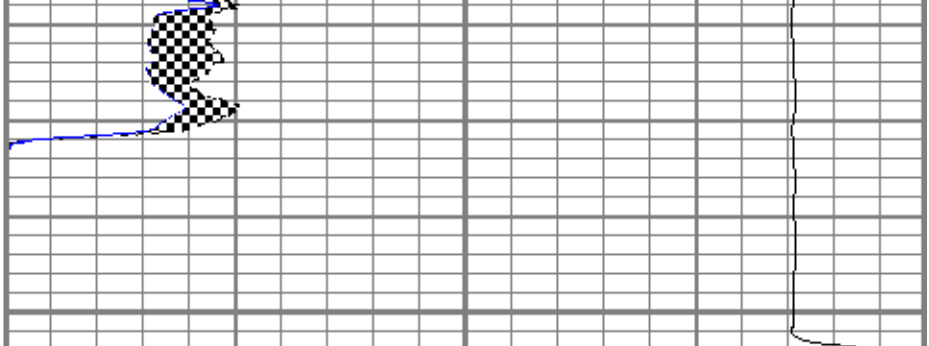
0	GR (GAPI)	150
6	MCAL (in)	16
6	BOREID (in)	16
0	MINMK	50

0	MN 2" (Ohm-m)	20
0	MI 1" (Ohm-m)	20
10000	LTEN (lb)	0





4950



0	GR (GAPI)	150
6	MCAL (in)	16
6	BOREID (in)	16
0	MINMK	50

0	MN 2" (Ohm-m)	20
0	MI 1" (Ohm-m)	20
10000	LTEN (lb)	0

Database File		beavery#14-1oh.db	
Dataset Pathname		pass7.1	
Dataset Creation		Fri Jun 29 19:22:23 2018	

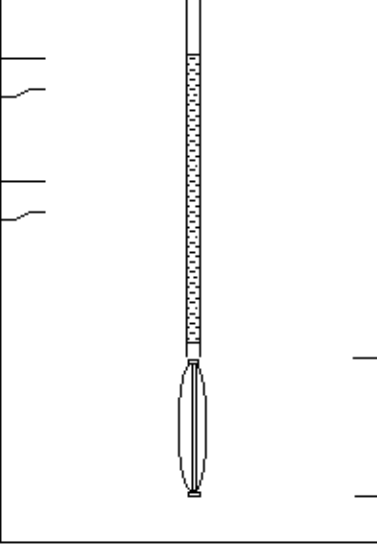
Calibration Report

Microlog Calibration Report			
Serial-Model:		9151-Gerhart	
Performed:		Fri Jun 29 17:43:45 2018	

	Readings			References			Results	
	Zero	Cal		Zero	Cal		m	b
Normal	-0.0008	0.4744	V	0.0000	10.0000	Ohm-m	21.0468	0.0159
Inverse	-0.0065	0.6278	V	0.0000	10.0000	Ohm-m	15.7660	0.1027
Caliper	0.9710	1.9556	V	7.6000	13.5000	in	5.9921	1.7819

Gamma Ray Calibration Report			
Serial Number:	2001		
Tool Model:	OH		
Performed:	Sun Nov 12 16:26:41 2017		
Calibrator Value:	1.0	GAPI	
Background Reading:	0.0	cps	
Calibrator Reading:	1.0	cps	
Sensitivity:	0.7000	GAPI/cps	

Sensor	Offset (ft)	Schematic	Description	Length (ft)	O.D. (in)	Weight (lb)
GR	30.83		CHD-STD	0.50	1.69	1.00
			GR-OH (2001) 2001	3.56	3.25	40.00
ML-Gerhart (9151) Gerhart Micro	9.46	4.00	125.00			
MCAL	22.04					
MI	22.04					
MN	22.04					

WVF4	14.25		SLT-G (372) Sonic	15.71	3.50	250.00	
WVF3	13.25						
WVF2	10.25						
WVF1	9.25						
			CENT-OHlong Open Hole long Centralizer	4.50	3.50	50.00	

Dataset: beavery#14-1oh.db: field/well/run1/pass7.1
 Total length: 33.73 ft
 Total weight: 466.00 lb
 O.D.: 4.00 in