



**COMPENSATED DENSITY
NEUTRON
LOG**

Company Bickle Energies, LLC.

Well Avery #14-1

Field Unnamed

County Cheyenne State Kansas

Location: API #: 15 023 21488

SEC 14 TWP 5S RGE 37W

1335' FSL & 1645' FEL

Permanent Datum Ground Level Elevation 3333'

Log Measured From KB 5' AGL

Drilling Measured From KB

**Other Services
DIL
ML
BCS
Elevation**

K.B. 3338'

D.F. 3337'

G.L. 3333'

Date 6-29-18

Run Number Two

Depth Driller 4950'

Depth Logger 4955'

Bottom Logged Interval 4953'

Top Log Interval 3700'

Casing Driller 8 5/8" @ 349'

Casing Logger 349'

Bit Size 7 7/8"

Type Fluid in Hole Chemical

Density / Viscosity 9.5/53

PH / Fluid Loss 9.5/7.6

Source of Sample Pit

Rm @ Meas. Temp .8@88degf

Rmf @ Meas. Temp 0.6@88degf

Rmc @ Meas. Temp 1.0@88degf

Source of Rmf / Rmc Calculated

Rm @ BHT 0.53@134degf

Time Circulation Stopped 12:00 p.m

Time Logger on Bottom 4:25 p.m

Maximum Recorded Temperature 134degf

Equipment Number T-127

Location Hays, KS.

Recorded By C.Patterson

Witnessed By Mr. Kleth Reavis

Mr. Matt Bickle

<<< Fold Here >>>

All interpretations are opinions based on inferences from electrical or other measurements and we cannot and do not guarantee the accuracy or correctness of any interpretation, and we shall not, except in the case of gross or willful negligence on our part, be liable or responsible for any loss, costs, damages, or expenses incurred or sustained by anyone resulting from any interpretation made by any of our officers, agents or employees. These interpretations are also subject to our general terms and conditions set out in our current Price Schedule.

Comments

North Of Brewster,KS to EE Rd., West EE Rd. 3 mi. to 34 Rd., Then North on 34 Rd. 3 1/4 mi.
West Into Location

Thanks for using Gemini Wireline LLC
785-625-1182

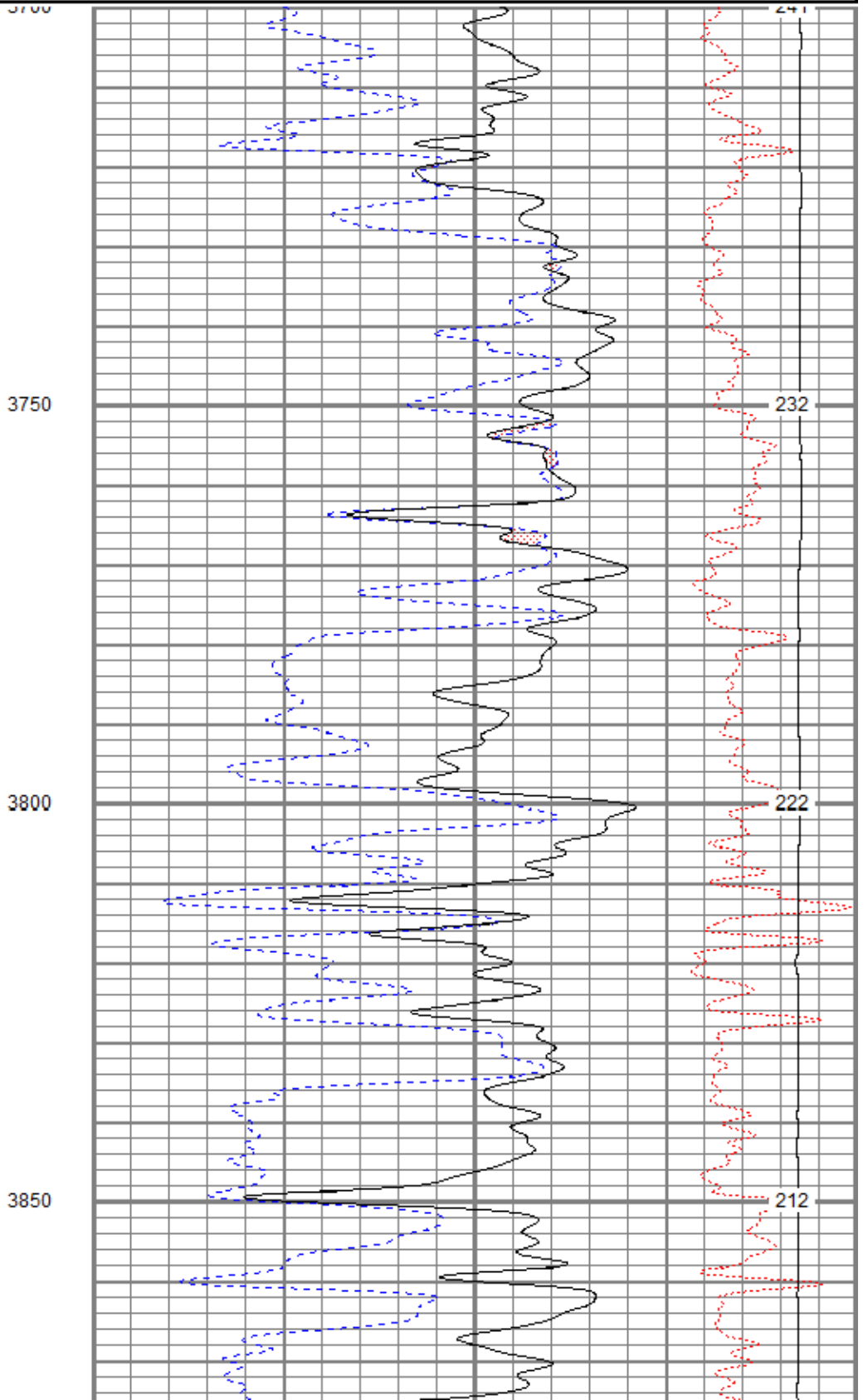
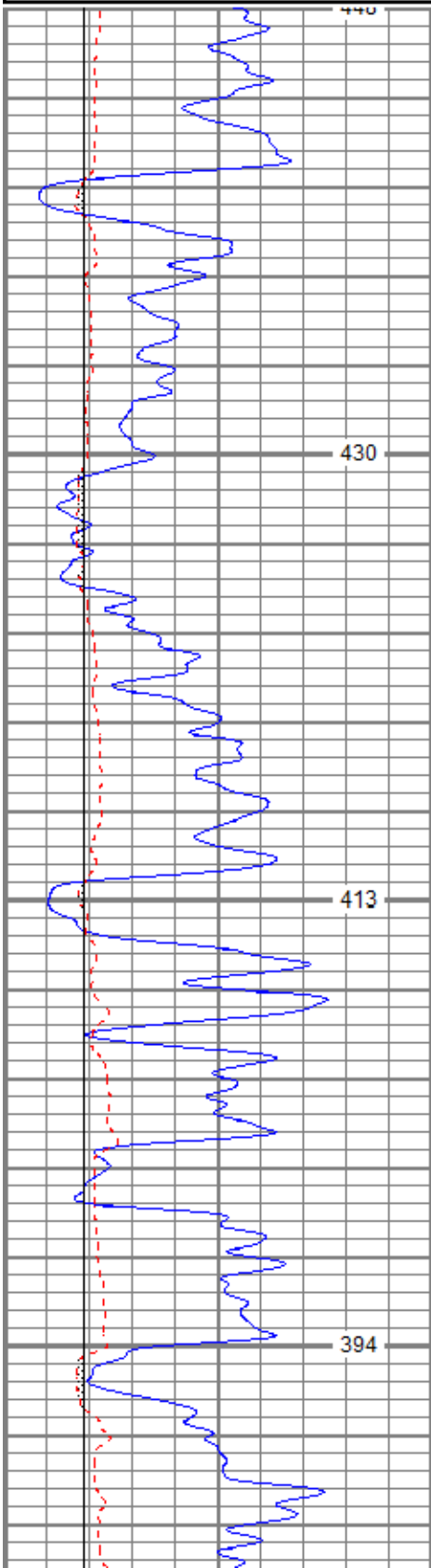


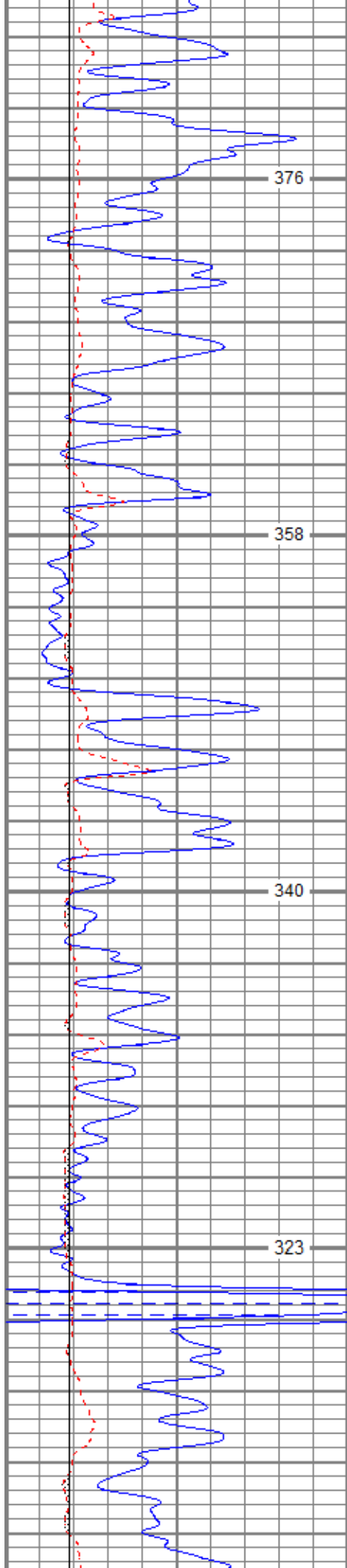
MAIN PASS

Database File beavery#14-1oh.db
 Dataset Pathname pass5.1
 Presentation Format kcdnl
 Dataset Creation Fri Jun 29 17:02:13 2018
 Charted by Depth in Feet scaled 1:240

0	GR (GAPI)	150
6	DCAL (in)	16
6	BOREID (in)	16
6	BOREID (in)	16
	TBHV (ft3)	

30	NPOR (pu)	-10
30	DPOR (pu)	-10
70	DPOR (pu)	30
-0.25	RHOC (g/cc)	0.25
8000	LTEN (lb)	0
	ABHV (ft3)	



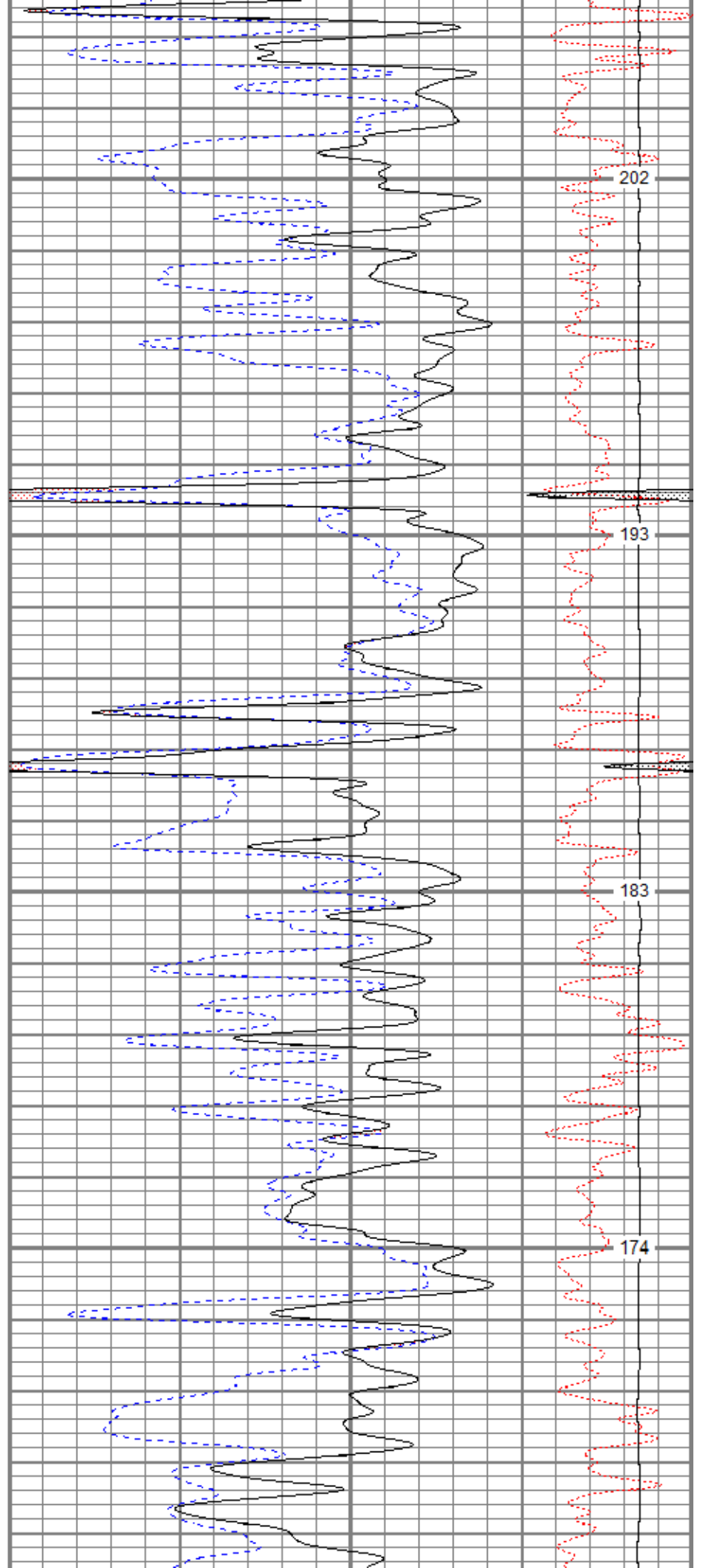


3900

3950

4000

4050

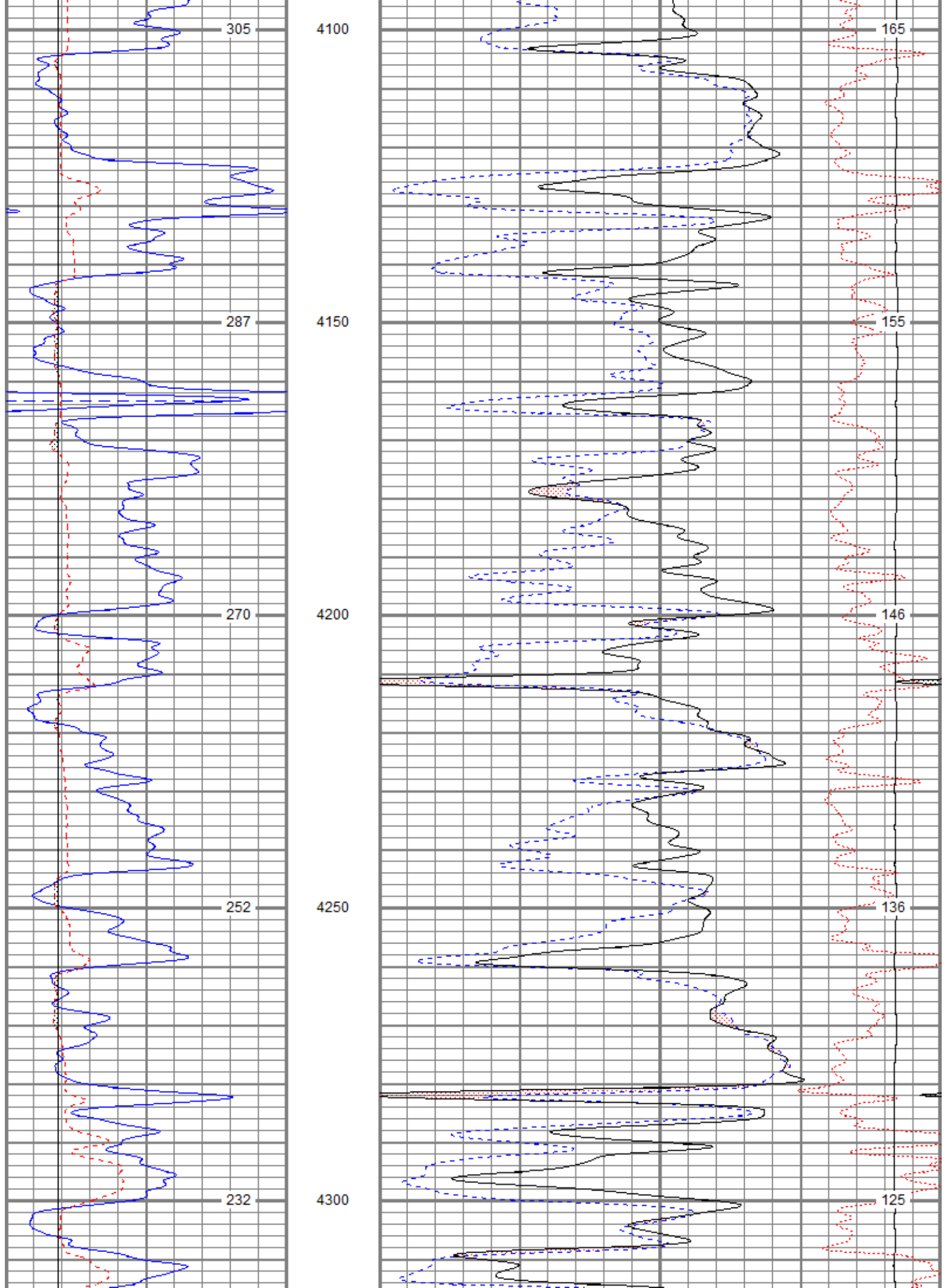


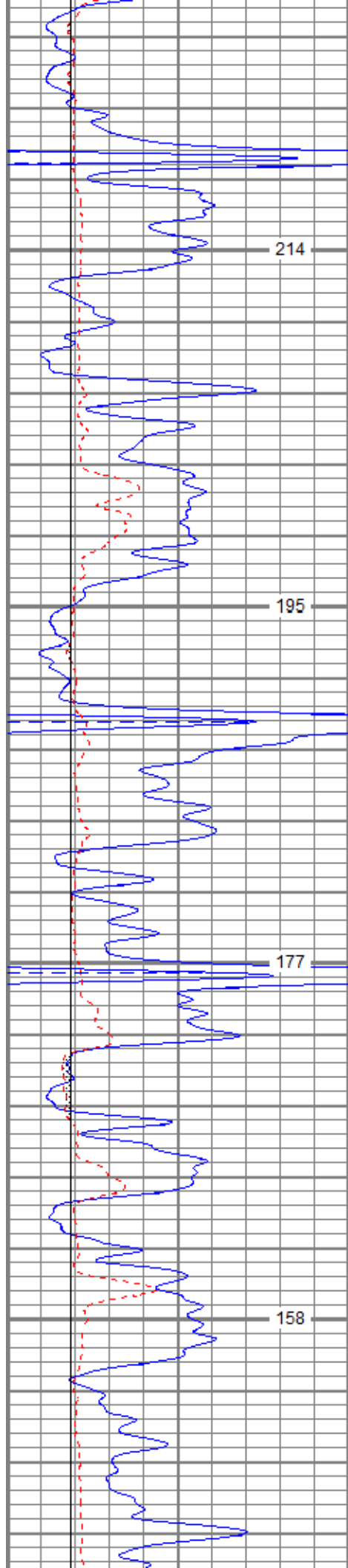
202

193

183

174



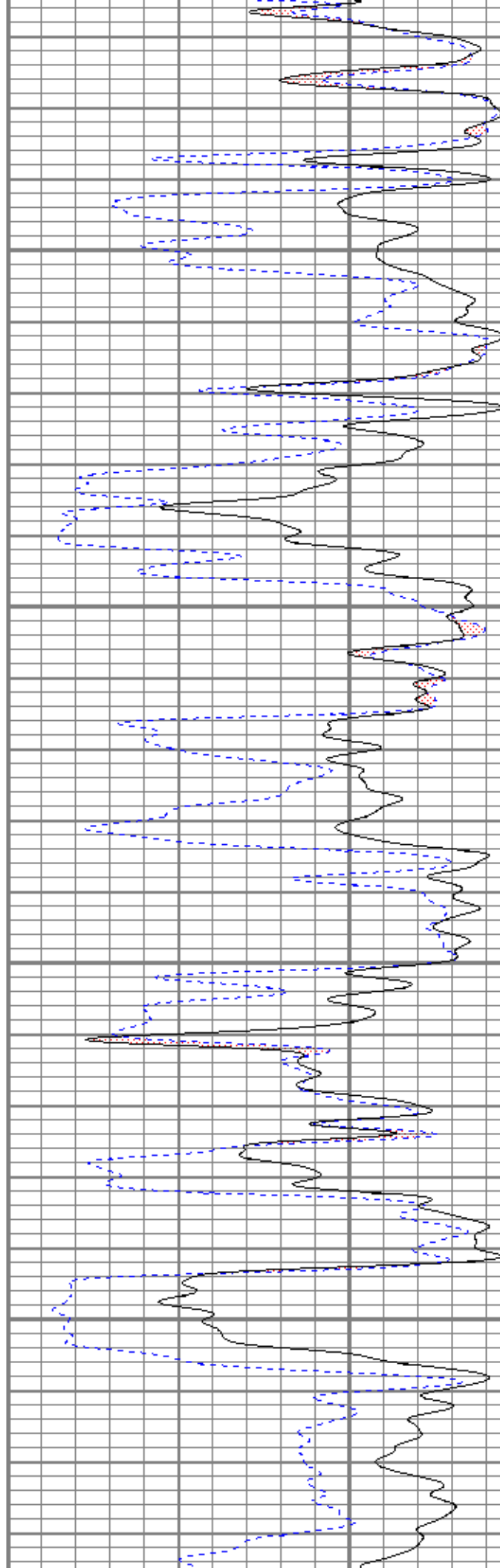


4350

4400

4450

4500

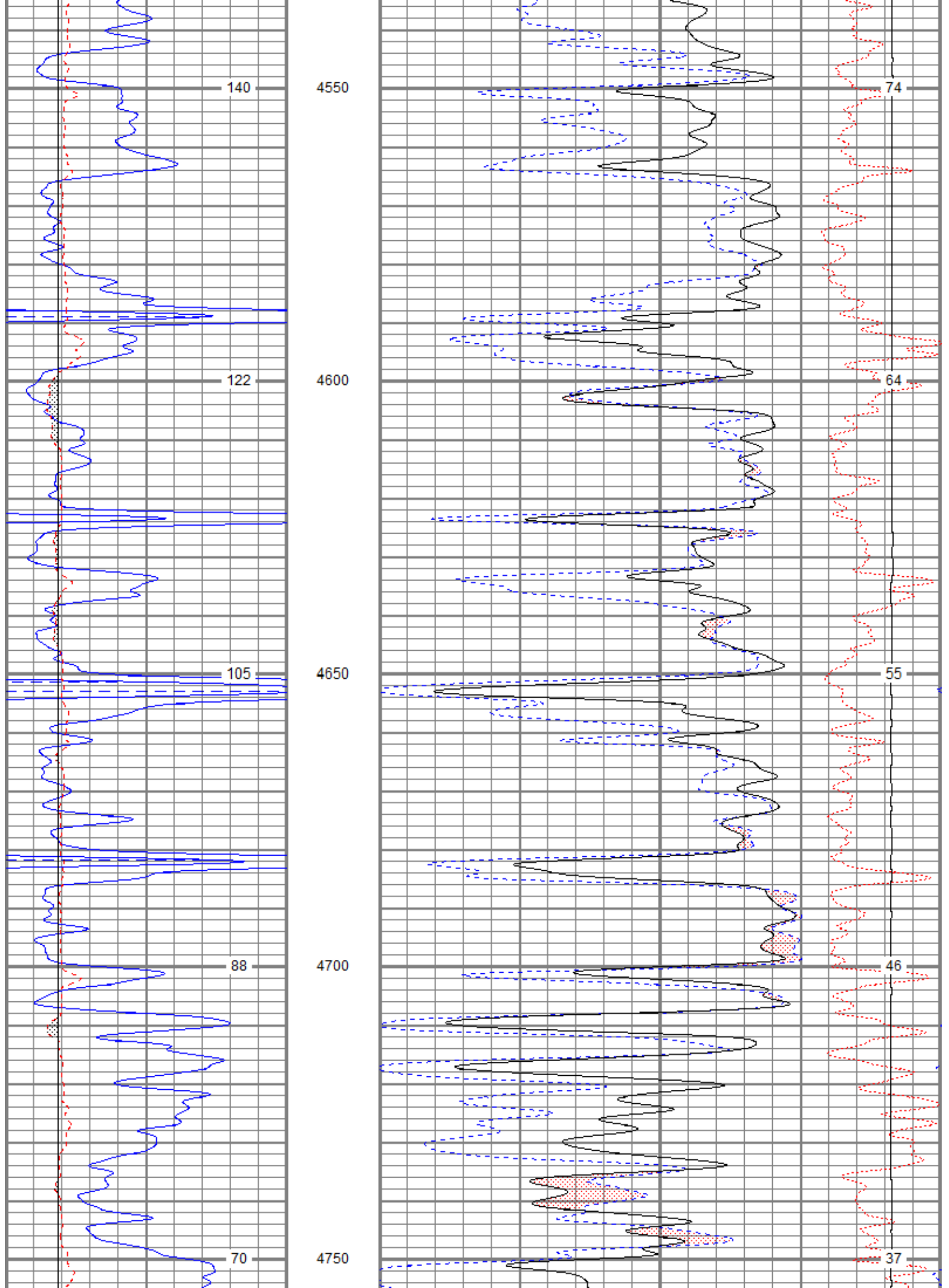


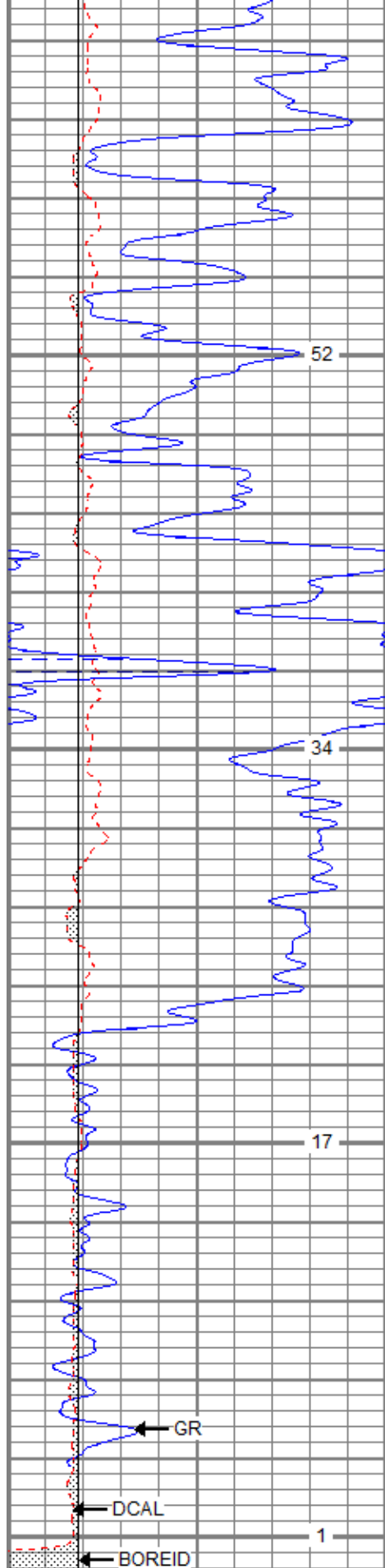
115

104

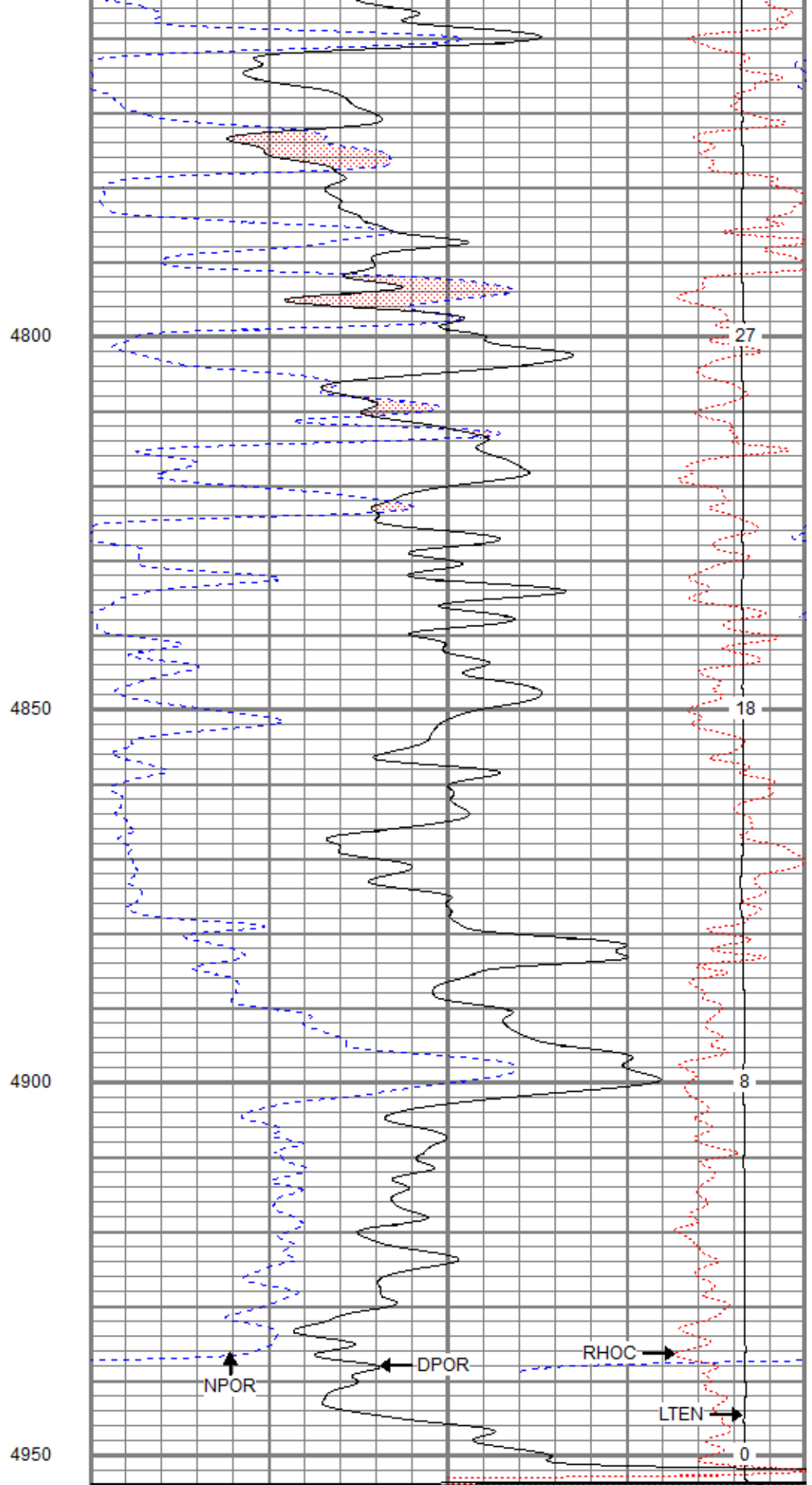
94

84





0	GR (GAPI)	150
6	DCAL (in)	16
6	BOREID (in)	16
6	BOREID (in)	16
	TBHV (ft3)	



30	NPOR (pu)	-10	
30	DPOR (pu)	-10	
70	DPOR (pu)	30	
	-0.25	RHOC (g/cc)	0.25
8000		LTEN (lb)	0

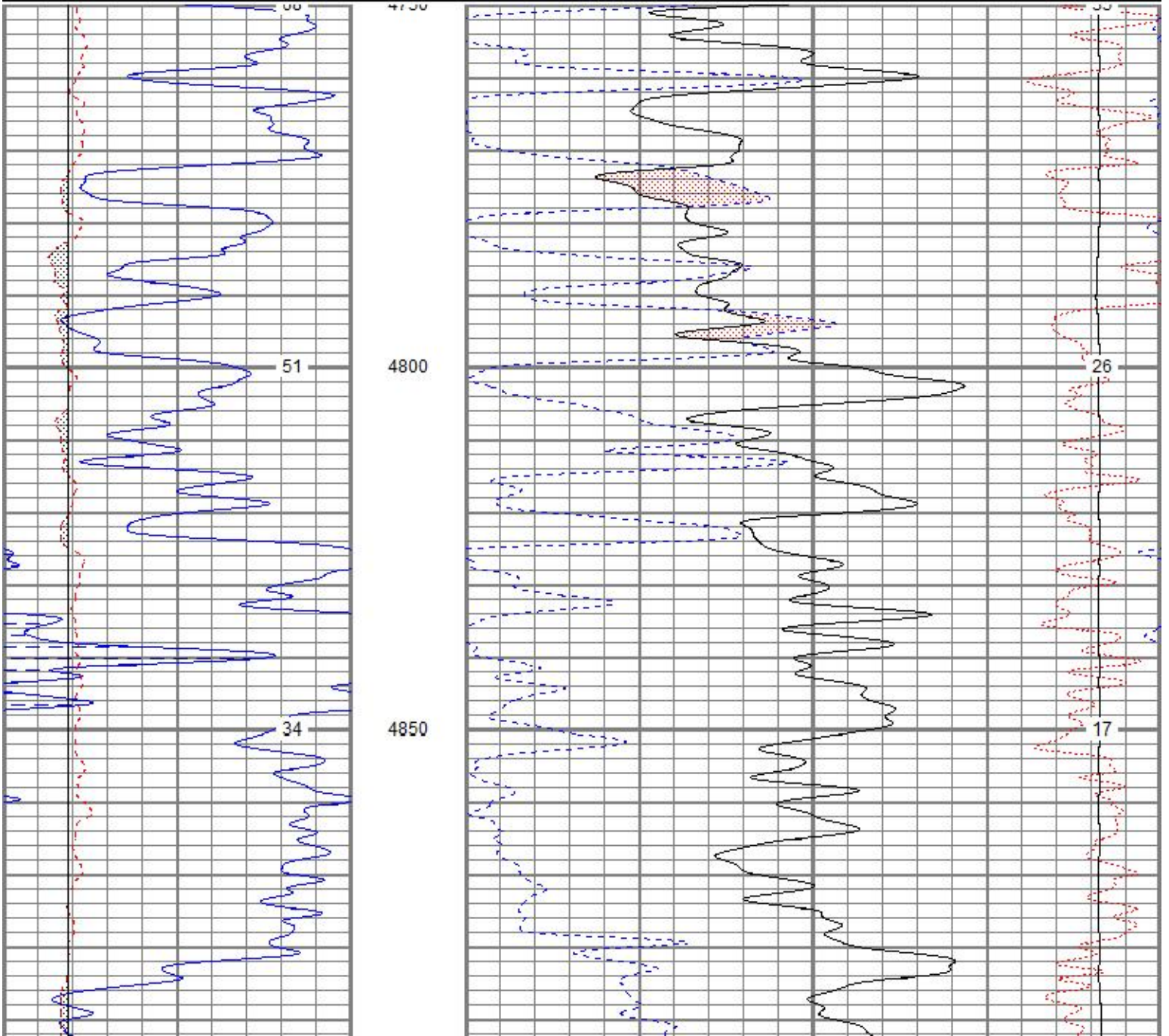


REPEAT SECTION

Database File beavery#14-1oh.db
 Dataset Pathname pass3.1
 Presentation Format kcdnl
 Dataset Creation Fri Jun 29 17:01:12 2018
 Charted by Depth in Feet scaled 1:240

0	GR (GAPI)	150
6	DCAL (in)	16
6	BOREID (in)	16
6	BOREID (in)	16
	TBHV (ft3)	

30	NPOR (pu)	-10
30	DPOR (pu)	-10
70	DPOR (pu)	30
-0.25	RHOC (g/cc)	0.25
8000	LTEN (lb)	0
	ABHV (ft3)	



Gamma Ray Calibration Report

Serial Number: 2000
 Tool Model: P2000
 Performed: Sun May 06 10:04:13 2018

Calibrator Value: 1.0 GAPI

Background Reading: 0.0 cps
 Calibrator Reading: 1.0 cps

Sensitivity: 0.7000 GAPI/cps

Neutron Calibration Report

Serial Number: 5108
 Tool Model: PROBE
 Performed: Sun Feb 19 03:21:57 2017

Calibrator Value: 1 NAPI

Calibrator Reading: 1 cps

Sensitivity: 1 NAPI/cps

Sensor	Offset (ft)	Schematic	Description	Length (ft)	O.D. (in)	Weight (lb)
NEU	16.90		CHD-None	0.75	1.50	5.00
			NEU-PROBE (5108) Probe	4.92	3.63	85.00
GR	11.10		GR-P2000 (2000)	3.67	3.25	40.00
LSD DCAL SSD HEADVOLT	2.31 2.02 1.77 0.00		CDL-DHT (2501DHT) Digital High Temp CDL Tool	9.69	4.00	201.00

Dataset: beavery#14-1oh.db: field/well/run1/pass5.1
 Total length: 19.02 ft
 Total weight: 331.00 lb
 O.D.: 4.00 in