



MICRO LOG

Company MAI OIL OPERATIONS
 Well HAMMEKE "B" #8
 Field
 County STAFFORD
 State KANSAS

Company MAI OIL OPERATIONS
 Well HAMMEKE "B" #8
 Field
 County STAFFORD State KANSAS

Location: API # : 15-185-23977-0000
 636' FSL & 841' FEL
 Permanent Datum GROUND LEVEL Elevation 1844'
 Log Measured From KELLY BUSHING 8' A.G.L.
 Drilling Measured From KELLY BUSHING
 SEC 21 TWP 21S RGE 12W
 Other Services
 CDL/CNL
 DIL
 Elevation
 K.B. 1852
 D.F. 1850
 G.L. 1844

Date	12/20/16
Run Number	TWO
Depth Driller	3700
Depth Logger	3701
Bottom Logged Interval	3699
Top Log Interval	2900
Casing Driller	8 5/8" @ 656'
Casing Logger	656'
Bit Size	7 7/8"
Type Fluid in Hole	CHEMICAL MUD
Density / Viscosity	9.6/54
pH / Fluid Loss	10.0/8.0
Source of Sample	FLOWLINE
Rm @ Meas. Temp	.85 @ 60F
Rmt @ Meas. Temp	.63 @ 60F
Rmc @ Meas. Temp	1.02 @ 60F
Source of Rmf / Rmc	MEASURED
Rm @ BHT	.45 @ 113F
Time Circulation Stopped	2 HOURS
Time Logger on Bottom	
Maximum Recorded Temperature	113F
Equipment Number	4010
Location	HAYS, KANSAS
Recorded By	JASON CAPPELLUCCI
Witnessed By	JIM MUSGROVE

<<< Fold Here >>>

All interpretations are opinions based on inferences from electrical or other measurements and we cannot and do not guarantee the accuracy or correctness of any interpretation, and we shall not, except in the case of gross or willful negligence on our part, be liable or responsible for any loss, costs, damages, or expenses incurred or sustained by anyone resulting from any interpretation made by any of our officers, agents or employees. These interpretations are also subject to our general terms and conditions set out in our current Price Schedule.

Comments

THANK YOU FOR USING ELI WIRELINE, HAYS, KS. (785) 628-6395

DIRECTIONS:

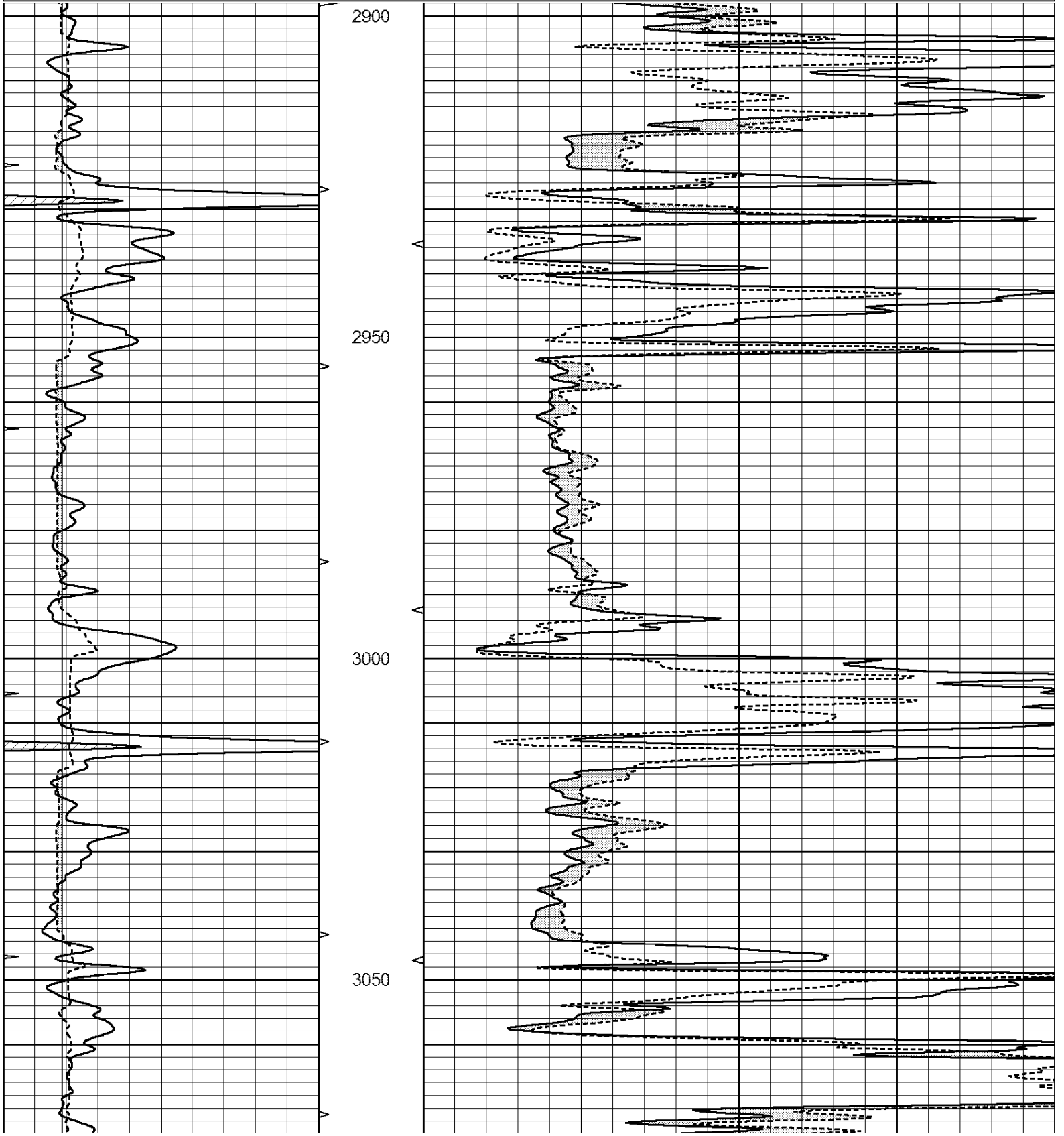
GREAT BEND, KS. - EAST TO DARTMOUTH BLKTOP - SOUTH TO COUNTY LINE
 JOG 1/2 MILE WEST AND 4 SOUTH TO 170TH RD. - 2 EAST - 1/4 NORTH - WEST INTO

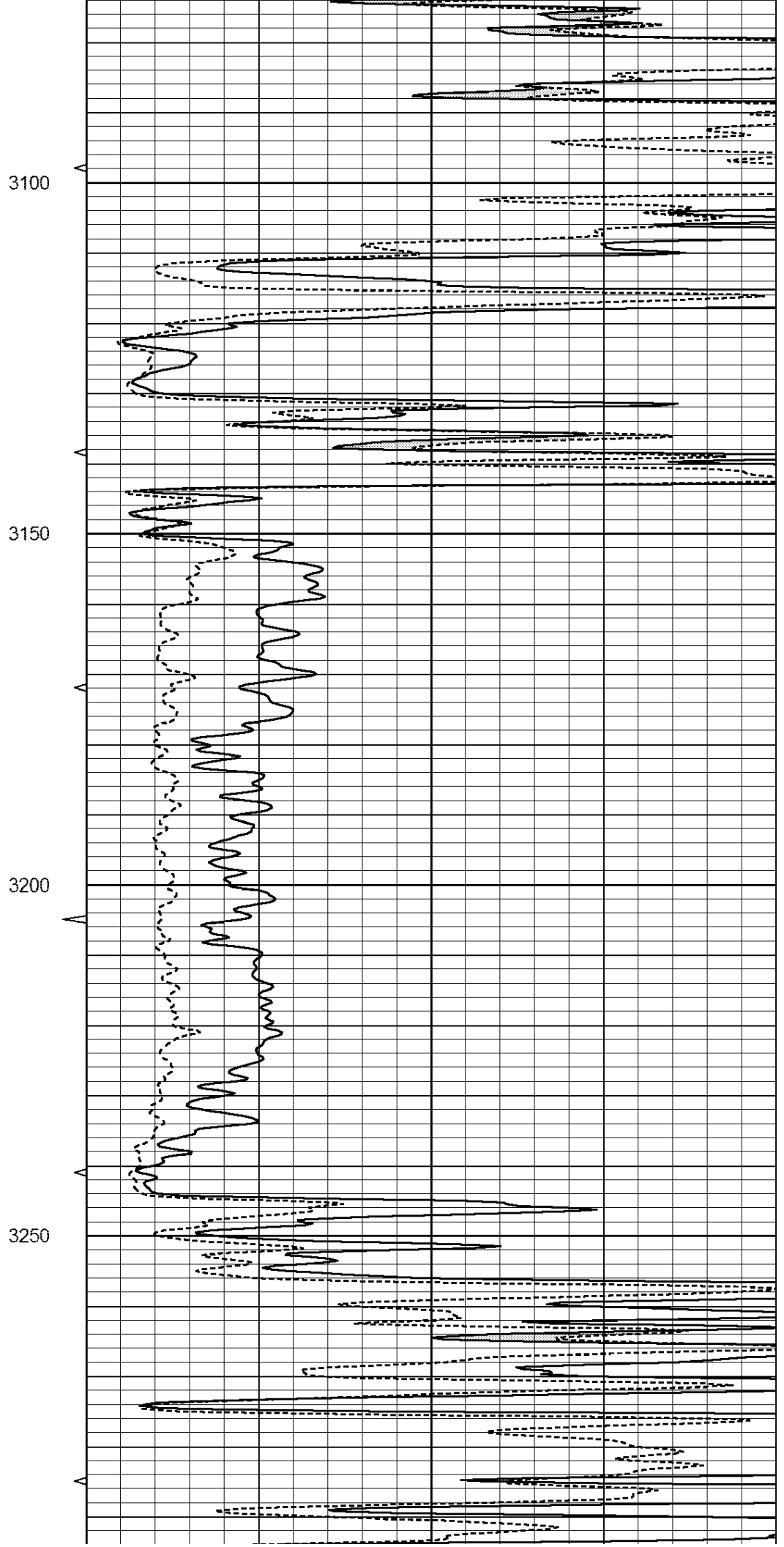
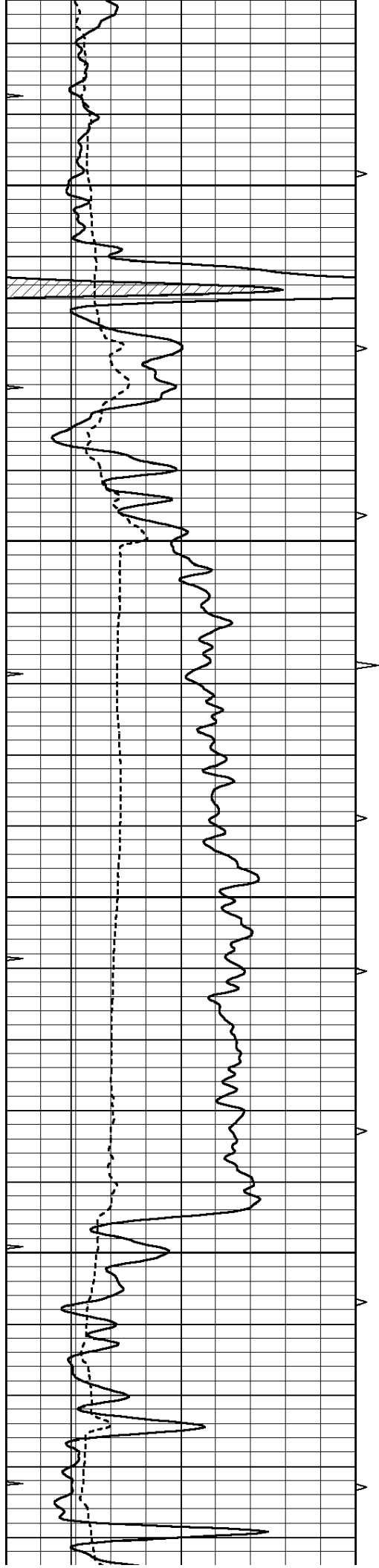


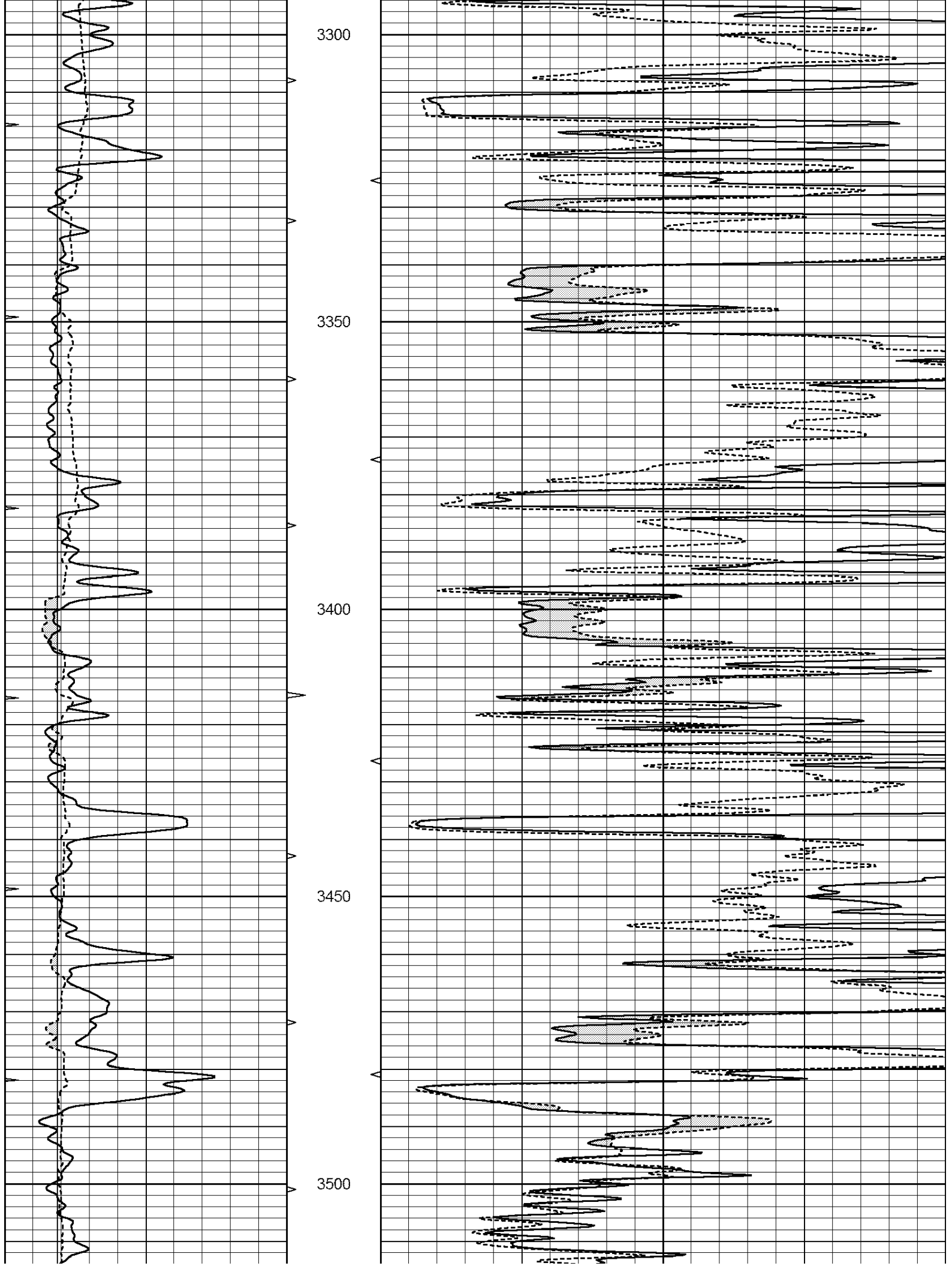
MAIN SECTION

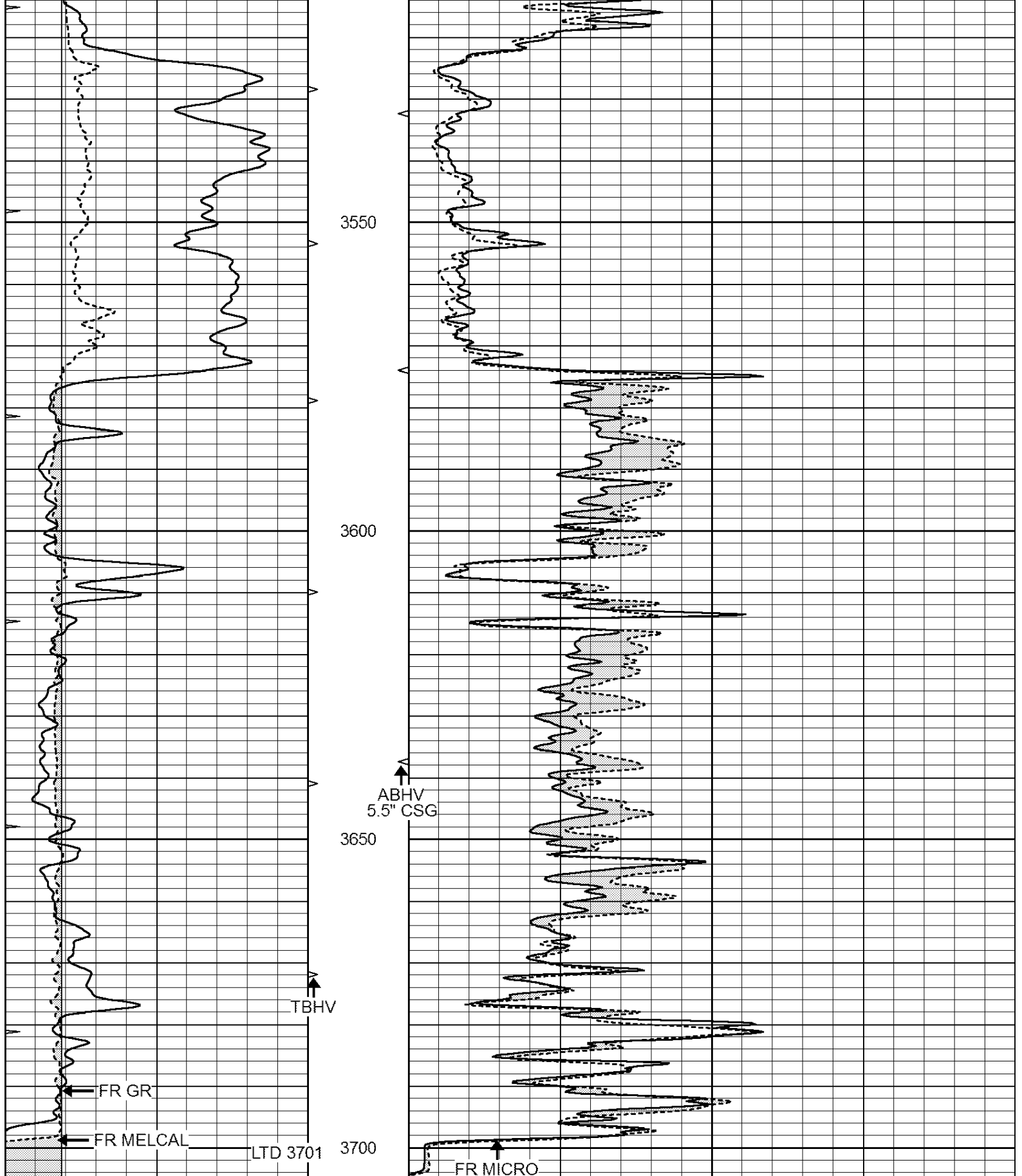
Database File: 31109ddn.db
 Dataset Pathname: pass6.1
 Presentation Format: _micro
 Dataset Creation: Wed Dec 21 01:55:25 2016 by Calc Open-Cased 090629
 Charted by: Depth in Feet scaled 1:240

0	GAMMA RAY (GAPI)	150	ABHV	0	MEL1.5 (Ohm-m)	40
6	CALIPER (in)	16	10 (ft3)	0	MEL2.0 (Ohm-m)	40
0	MINMK	20	TBHV			
			0 (ft3)	10		



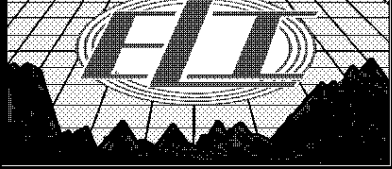






0	GAMMA RAY (GAPI)	150	ABHV	0	MEL1.5 (Ohm-m)	40
6	CALIPER (in)	16	10 (ft3)	0 0	MEL2.0 (Ohm-m)	40
0	MINMK	20	TBHV			
			0 (ft3)	10		

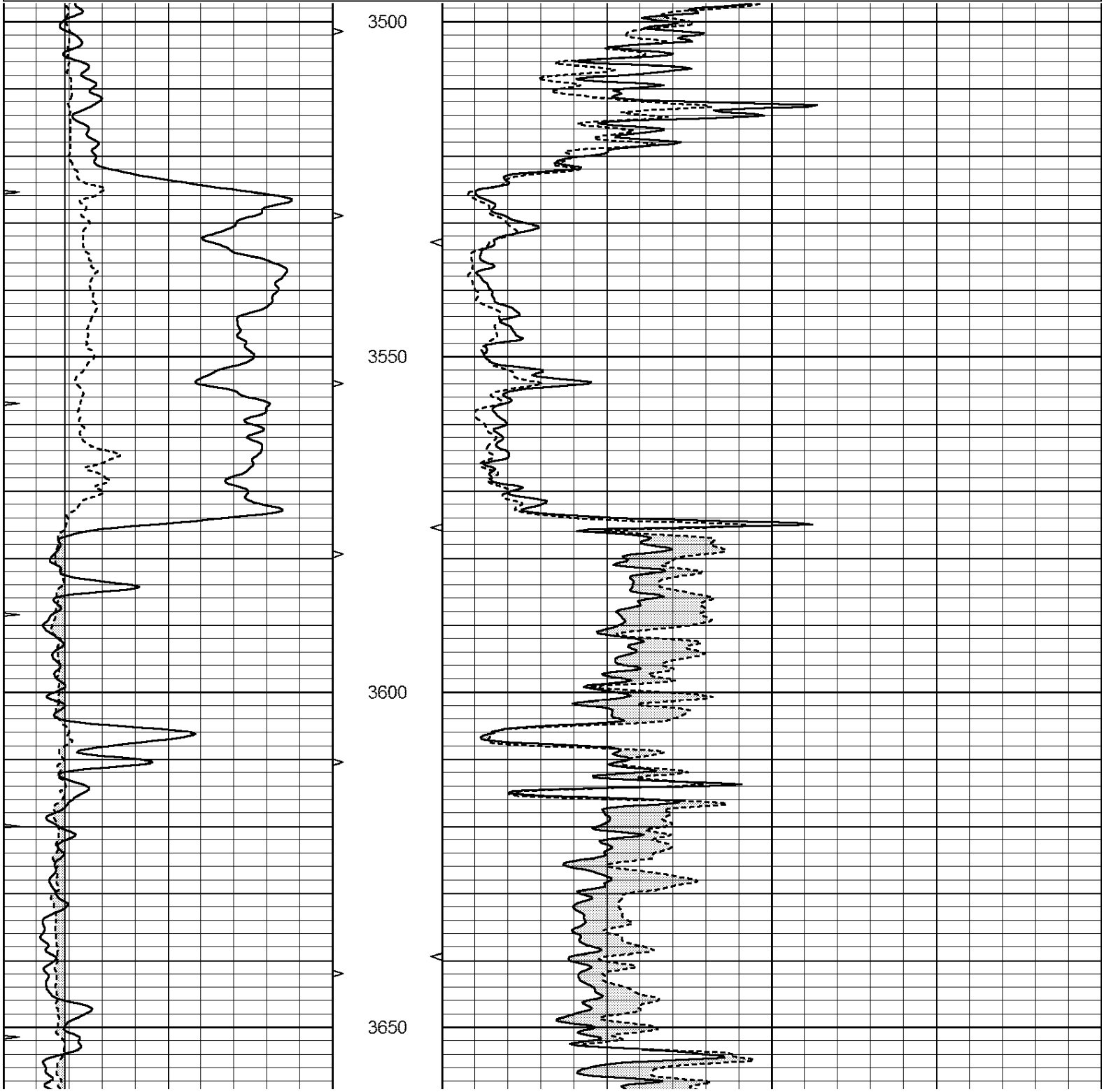


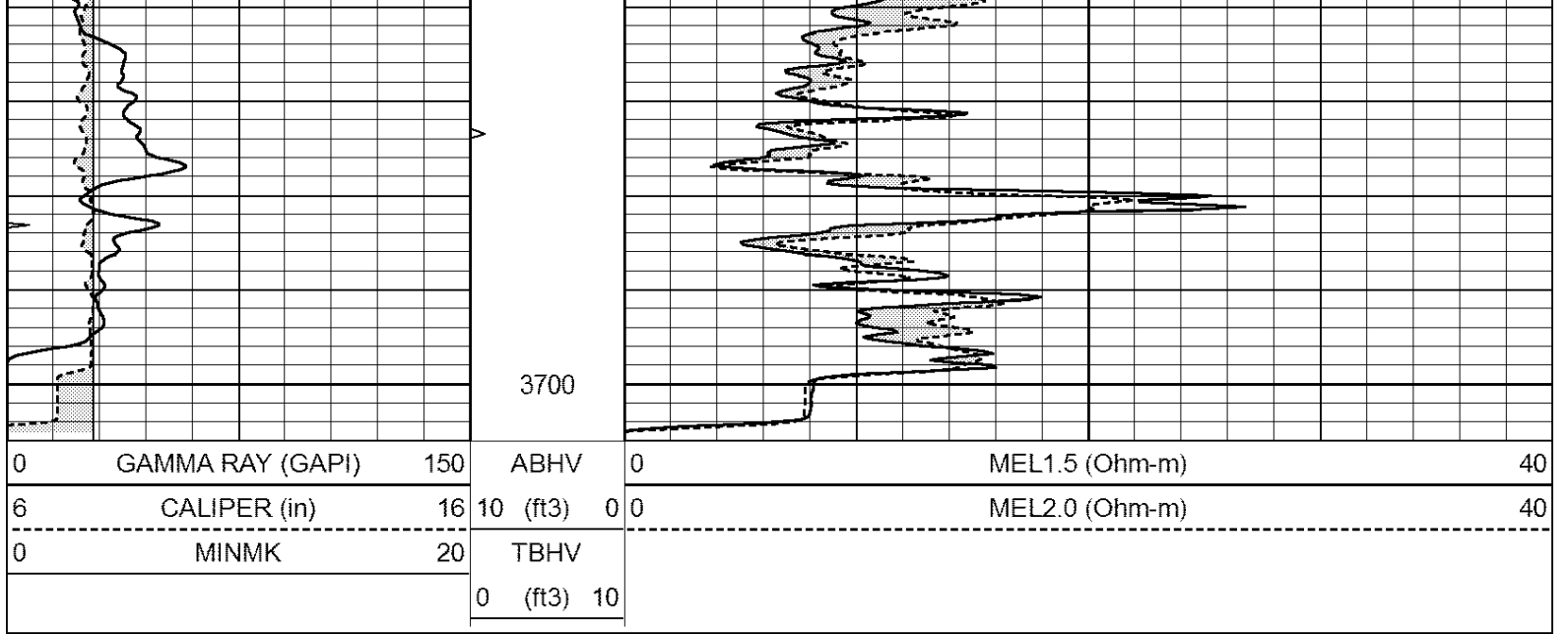


REPEAT SECTION

Database File: 31109ddn.db
 Dataset Pathname: pass5.1
 Presentation Format: _micro
 Dataset Creation: Wed Dec 21 01:42:45 2016 by Calc Open-Cased 090629
 Charted by: Depth in Feet scaled 1:240

0	GAMMA RAY (GAPI)	150	ABHV	0	MEL1.5 (Ohm-m)	40
6	CALIPER (in)	16	10 (ft3)	0 0	MEL2.0 (Ohm-m)	40
0	MINMK	20	TBHV			
			0 (ft3)	10		





Calibration Report			
Database File:	31109ddn.db		
Dataset Pathname:	pass5.1		
Dataset Creation:	Wed Dec 21 01:42:45 2016 by Calc Open-Cased 090629		
MICRO Calibration Report			
Serial Number:	MICRO6		
Tool Model:	PROBE		
Performed:	Wed Aug 26 00:34:46 2015		
Caliper Calibration:	Gain=3.960	Offset=4.601	
References	Low Cal	High Cal	
Readings	7.000	14.000	
	0.555	2.323	
1.5" Calibration:	Gain=38.075	Offset=-0.400	
References	Low Cal	High Cal	
Readings	0.000	20.000	
	0.004	1.196	
2" Calibration:	Gain=48.000	Offset=-1.000	
References	Low Cal	High Cal	
Readings	0.000	20.000	
	0.006	0.913	
Gamma Ray Calibration Report			
Serial Number:	GR6		
Tool Model:	OPEN		
Performed:	Thu Nov 12 05:47:01 2015		
Calibrator Value:	150.0	GAPI	
Background Reading:	0.0	cps	
Calibrator Reading:	276.0	cps	
Sensitivity:	0.4500	GAPI/cps	