

MICRO LOG

Company L. D. DRILLING, INC.
Well #1-5 GARY
Field WILDCAT
County LANE
State KANSAS

Company L. D. DRILLING, INC.
Well #1-5 GARY
Field WILDCAT
County LANE State KANSAS

Location: 1650' FSL & 2970' FEL
SE - NE - SW
APL # : 15-101-22618-0000
Permanent Datum GROUND LEVEL Elevation 2724
Log Measured From KELLY BUSHING 5' A.G.L.
Drilling Measured From KELLY BUSHING
Other Services CDL/CNL DIL
Elevation K.B. 2729 D.F. 2727 G.L. 2724

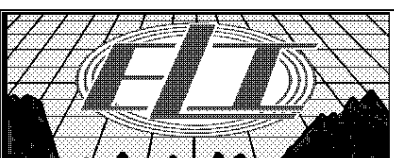
Date	1/4/19
Run Number	TWO
Depth Driller	4740
Depth Logger	4741
Bottom Logged Interval	4739
Top Log Interval	3400
Casing Driller	8 5/8"@245'
Casing Logger	245
Bit Size	7 7/8"
Type Fluid in Hole	CHEMICAL MUD
Density / Viscosity	9.3/55
pH / Fluid Loss	9.5/9.2
Source of Sample	FLOWLINE
Rim @ Meas. Temp	.900@80F
Rmf @ Meas. Temp	.675@80F
Rmc @ Meas. Temp	1.08@80F
Source of Rmf / Rmc	MEASUREMENT
Rim @ BHT	.585@123F
Time Circulation Stopped	4.5 HOURS
Time Logger on Bottom	3:15 A.M.
Maximum Recorded Temperature	123F
Equipment Number	922339
Location	HAYS, KANSAS
Recorded By	JEFF LUEBBERS
Witnessed By	KIM SHOEMAKER

<<< Fold Here >>>

All interpretations are opinions based on inferences from electrical or other measurements and we cannot and do not guarantee the accuracy or correctness of any interpretation, and we shall not, except in the case of gross or willful negligence on our part, be liable or responsible for any loss, costs, damages, or expenses incurred or sustained by anyone resulting from any interpretation made by any of our officers, agents or employees. These interpretations are also subject to our general terms and conditions set out in our current Price Schedule.

Comments

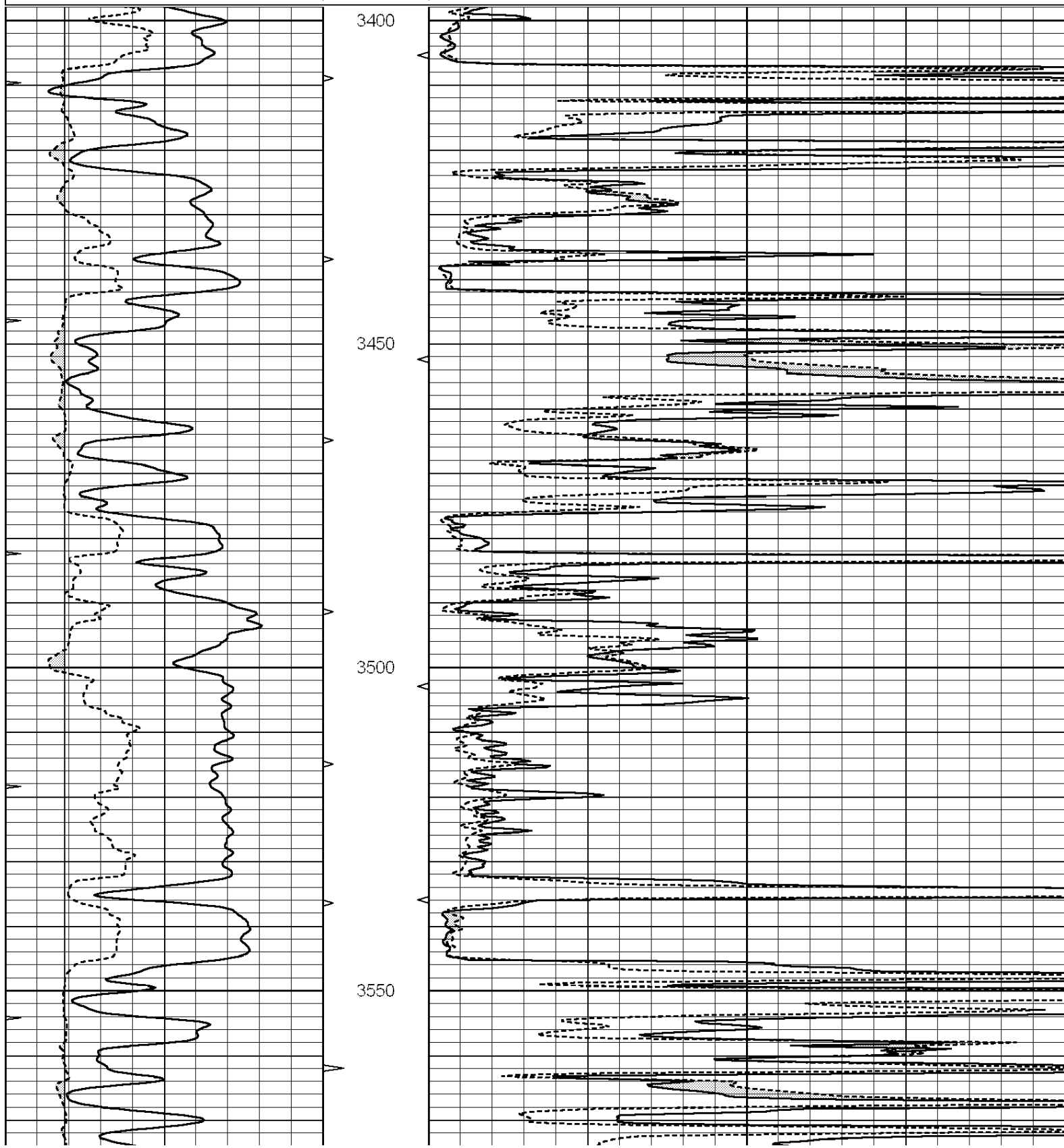
THANK YOU FOR USING ELI WIRELINE HAYS, KANSAS (785) 628-6395
DIRECTIONS
ALAMOTA, KS. (HWY 96 & TURKEY RED RD.) 3S. TO "RD. 110", 1 1/2W., N. INTO

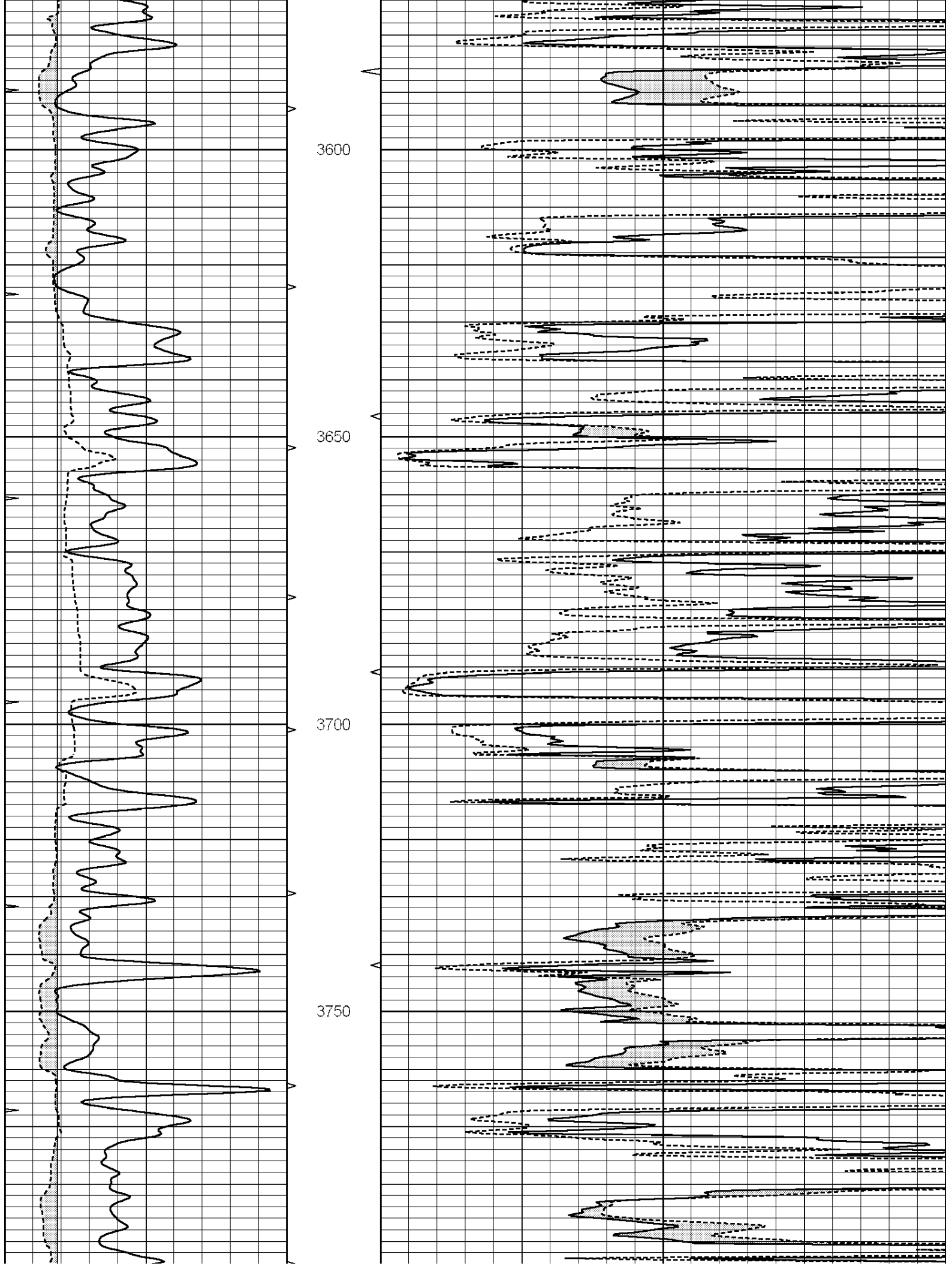


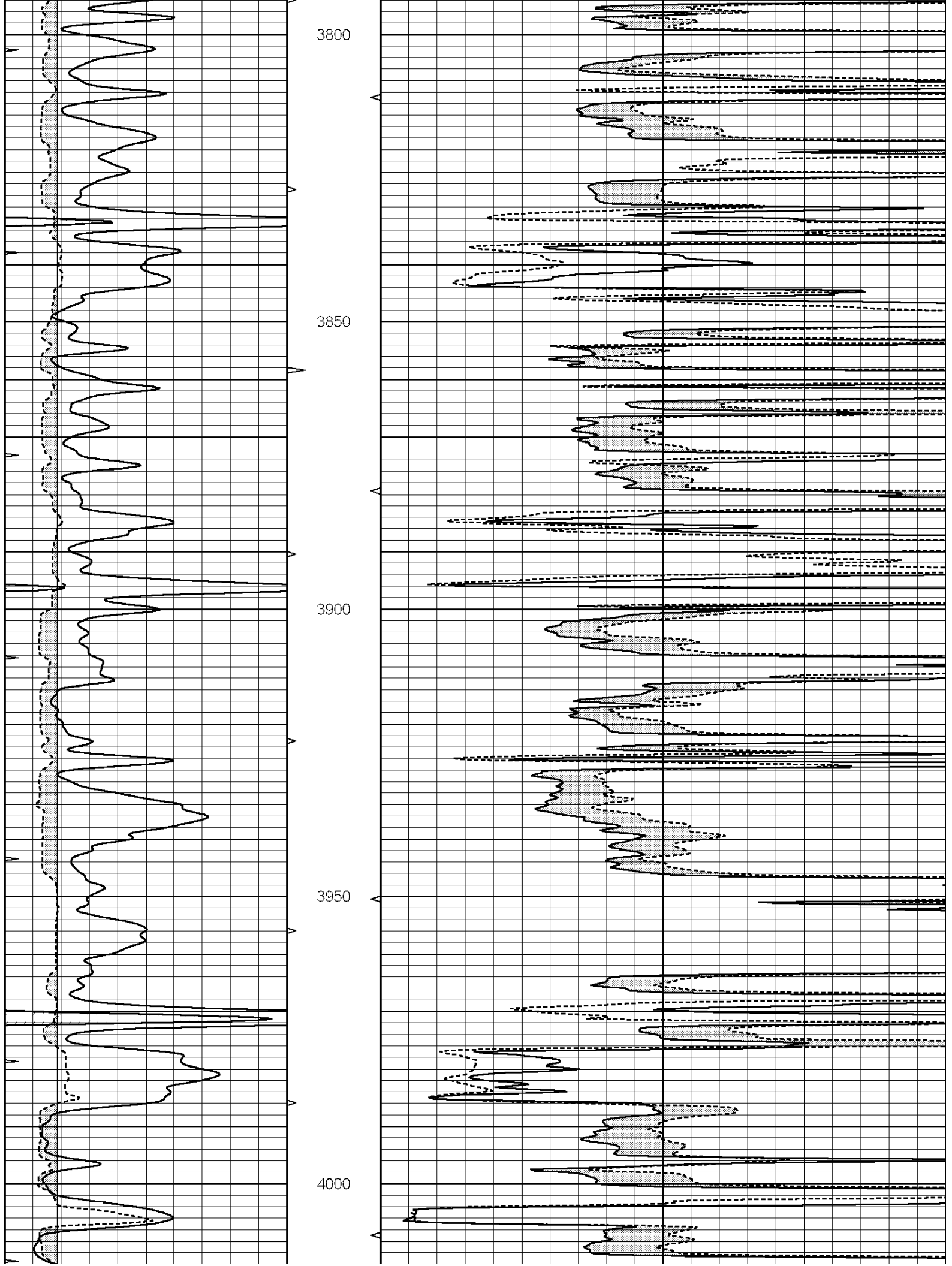
MAIN SECTION

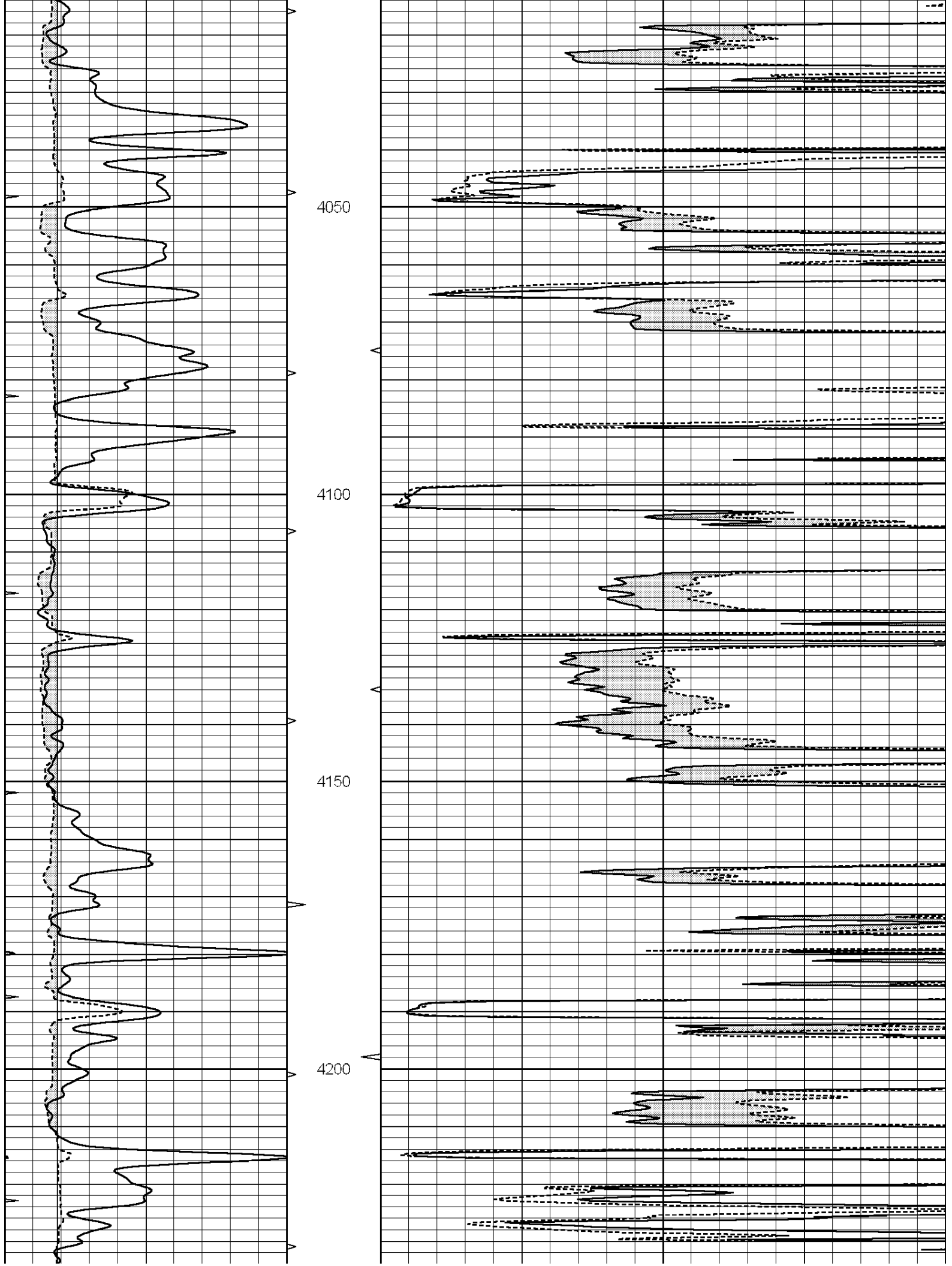
Database File: 3328ddn.db
 Dataset Pathname: pass6.3
 Presentation Format: micro
 Dataset Creation: Fri Jan 04 04:08:45 2019
 Charted by: Depth in Feet scaled 1:240

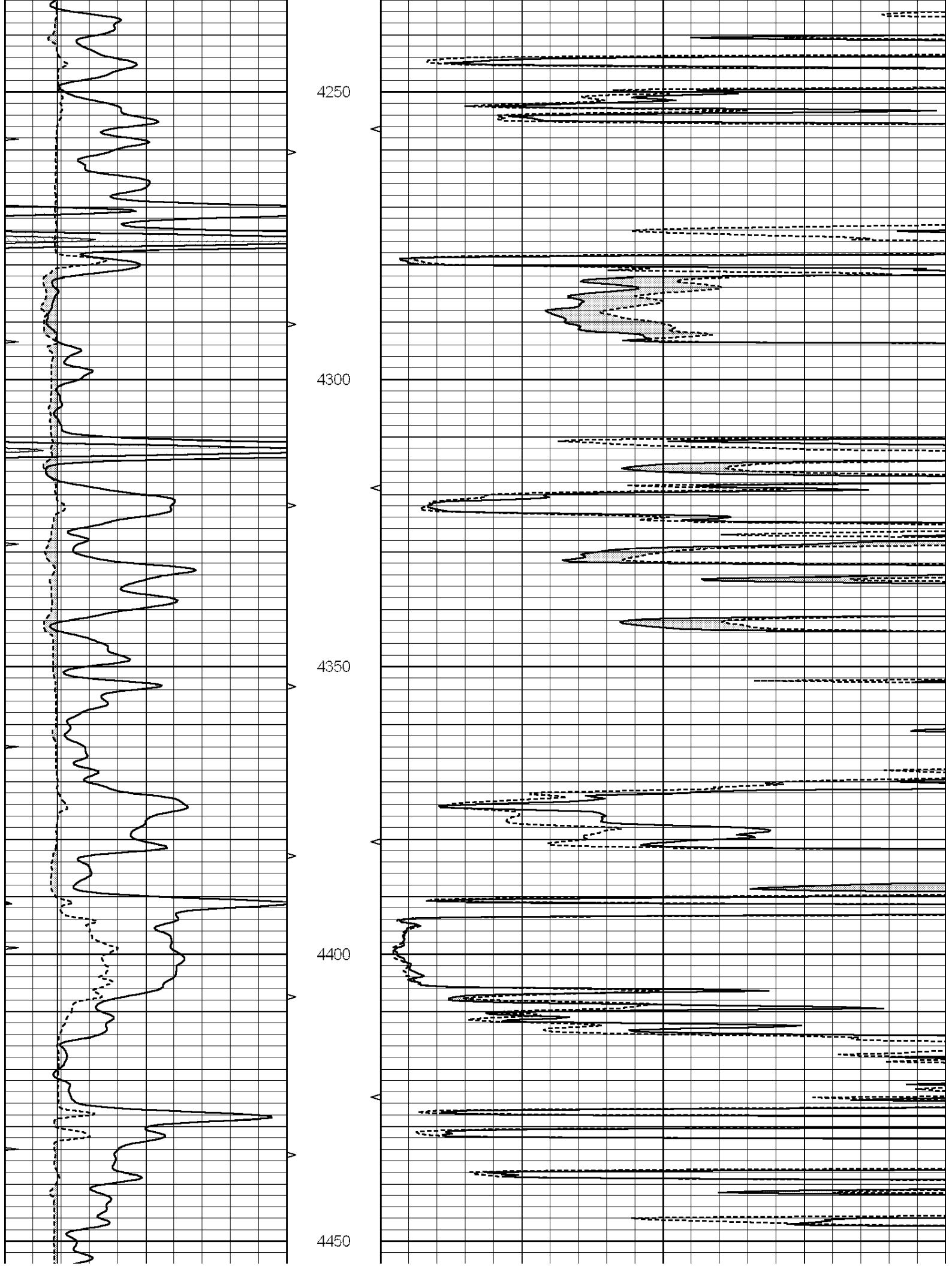
0	GAMMA RAY (GAPI)	150	ABHV	0	MEL1.5 (Ohm-m)	40
6	CALIPER (in)	16	10 (ft3)	0	MEL 20 (Ohm-m)	40
0	MINMK	20	TBHV			
			0 (ft3)	10		

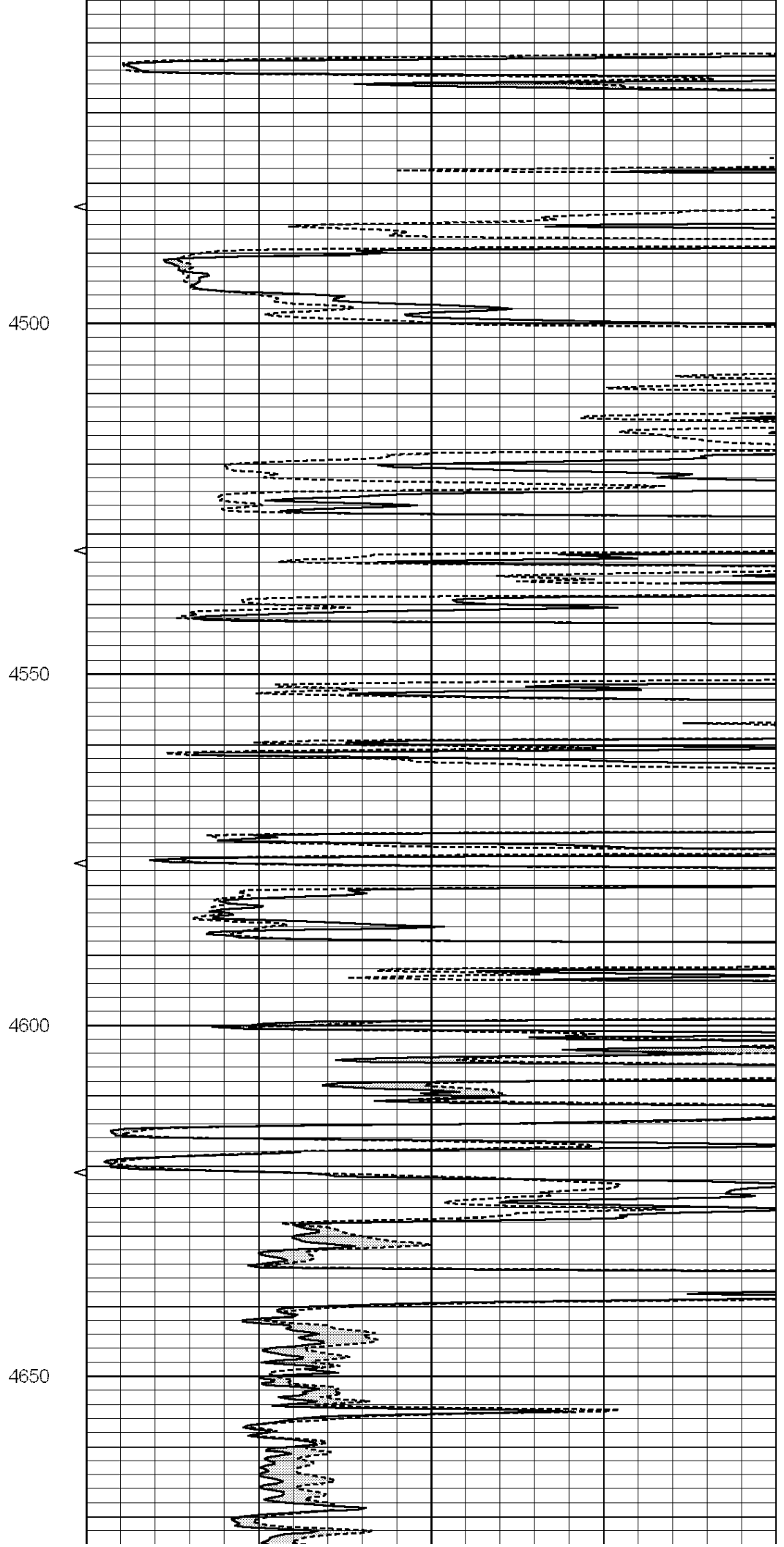
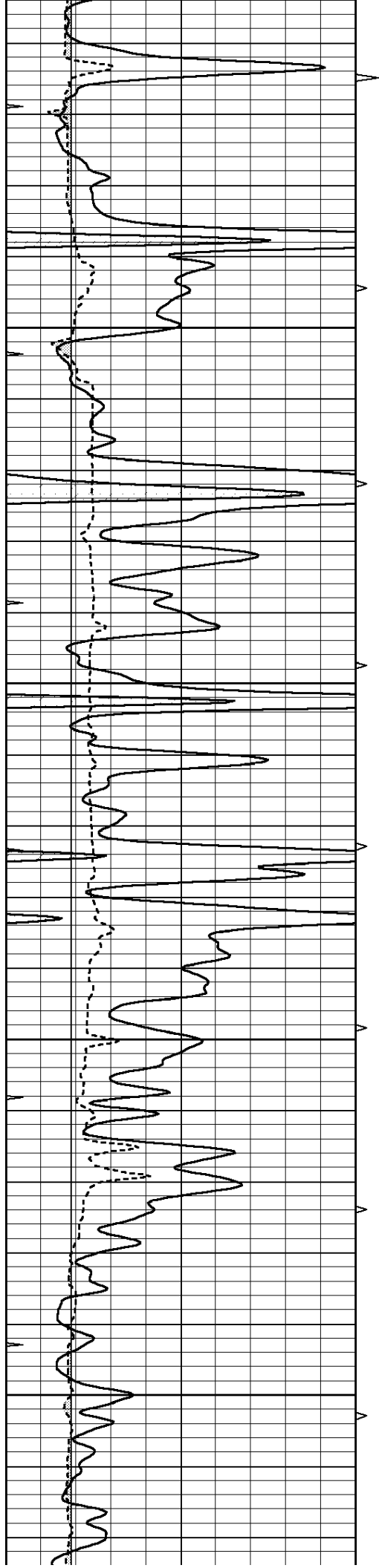


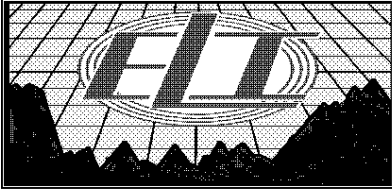
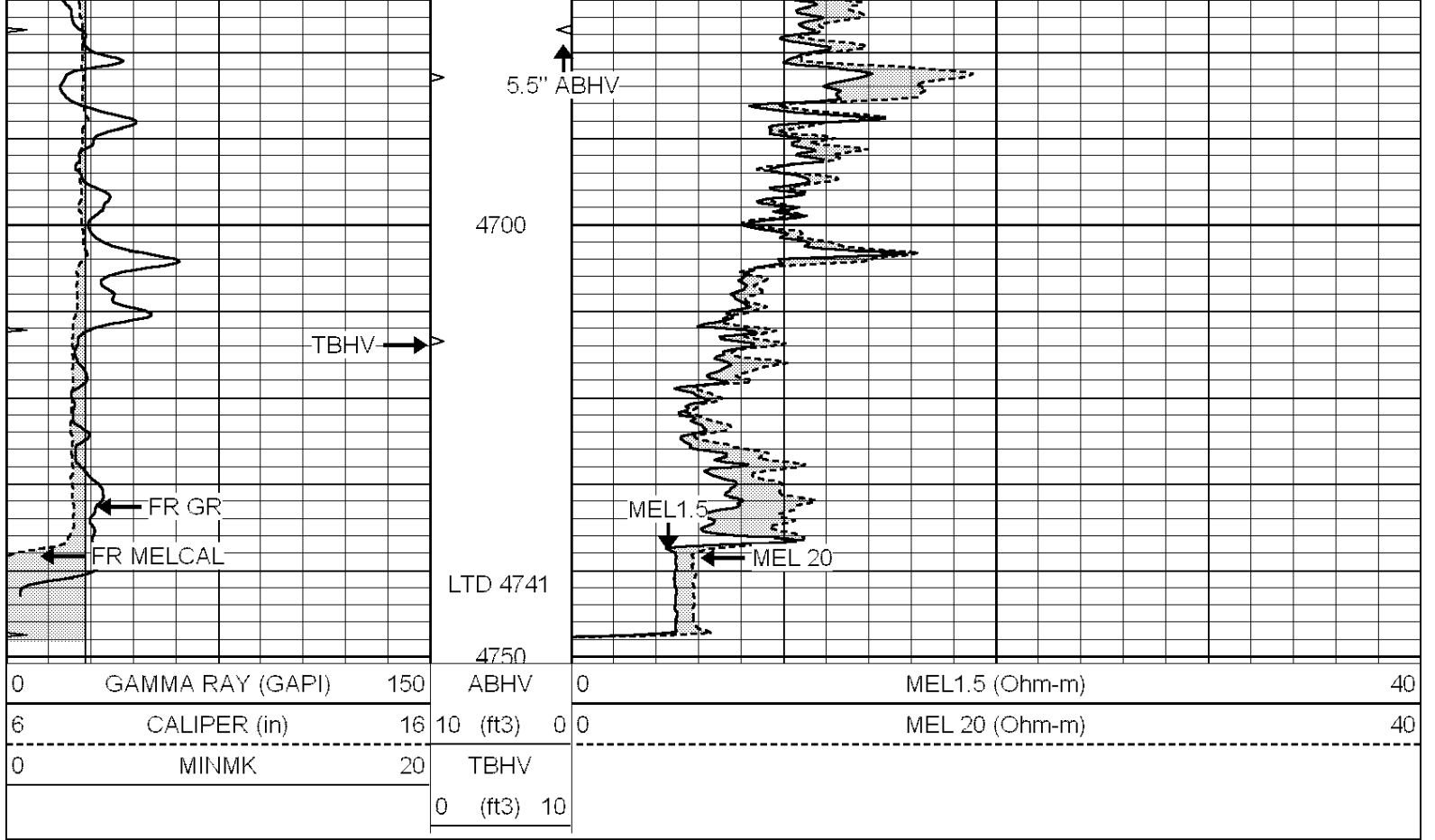








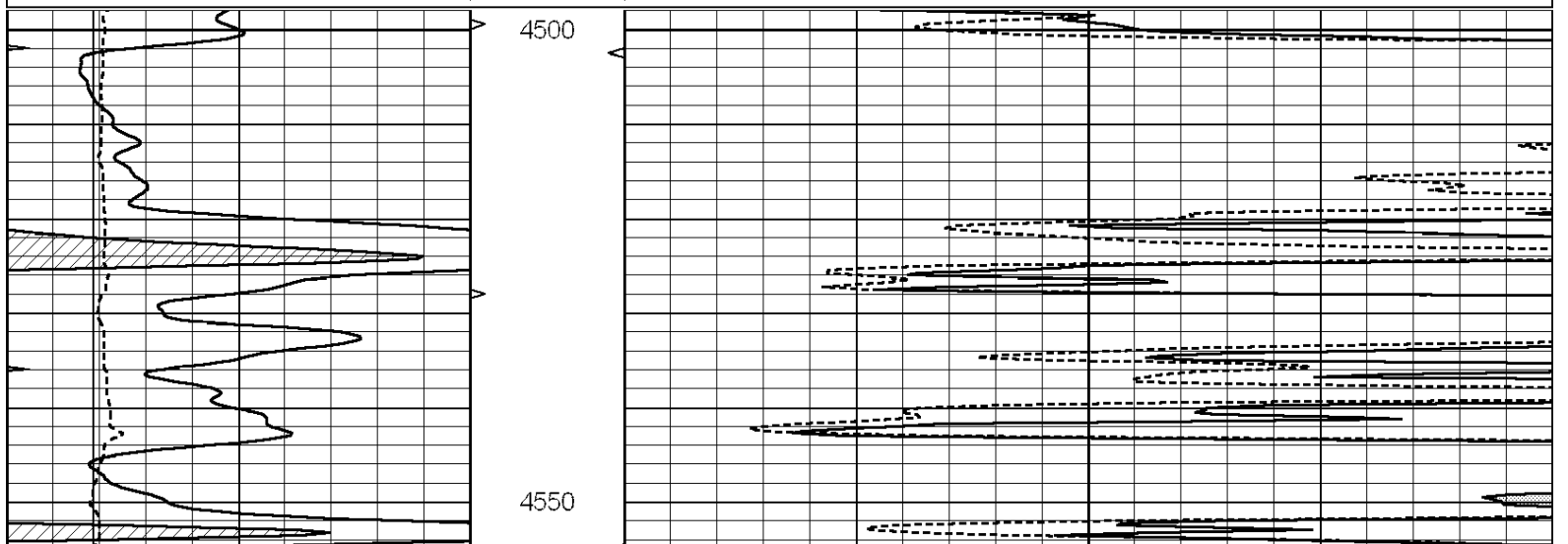


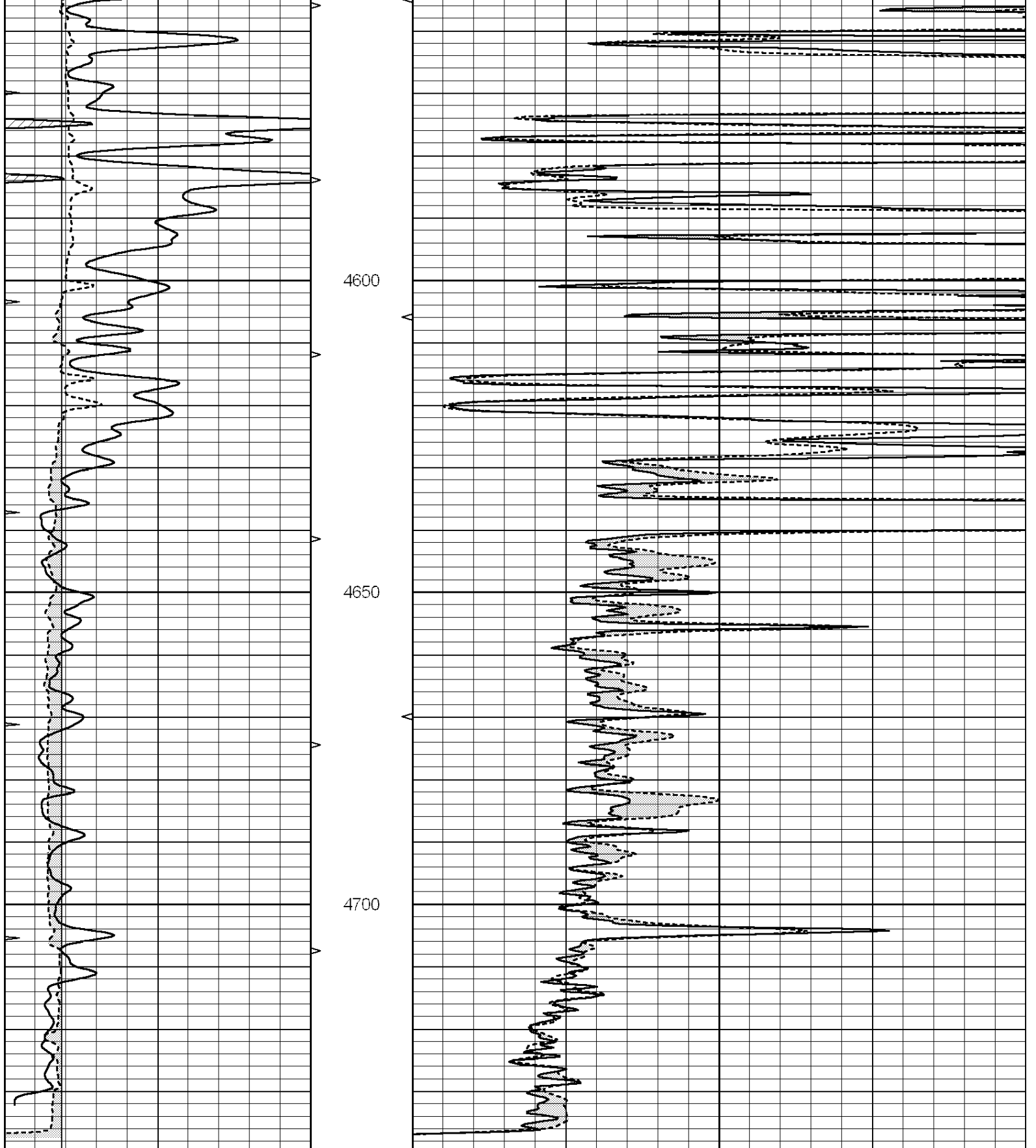


REPEAT SECTION

Database File: 3328ddn.db
 Dataset Pathname: pass5.2
 Presentation Format: micro
 Dataset Creation: Fri Jan 04 03:53:42 2019 by Calc SOC 120430
 Charted by: Depth in Feet scaled 1:240

0	GAMMA RAY (GAPI)	150	ABHV	0	MEL1.5 (Ohm-m)	40
6	CALIPER (in)	16	10 (ft3)	0 0	MEL 20 (Ohm-m)	40
0	MINMK	20	TBHV			
			0 (ft3) 10			





0	GAMMA RAY (GAPI)	150	ABHV	0	MEL1.5 (Ohm-m)	40
6	CALIPER (in)	16	10 (ft3)	0	MEL 20 (Ohm-m)	40
0	MINMK	20	TBHV			
			0 (ft3)	10		

Calibration Report

Database File: 3328ddn.db
 Dataset Pathname: nace6 3

MICRO Calibration Report

Serial Number: 070911
Tool Model: ProbeN
Performed: Fri Jan 04 03:49:47 2019

Caliper Calibration: Gain=4.542 Offset=1.605

References Low Cal High Cal
Readings 8.100 20.000
 1.430 4.050

1.5" Calibration: Gain=60.000 Offset=-3.000

References Low Cal High Cal
Readings 0.000 20.000
 0.001 1.240

2" Calibration: Gain=66.000 Offset=-2.700

References Low Cal High Cal
Readings 0.000 20.000
 0.001 1.076

Gamma Ray Calibration Report

Serial Number: 070559
Tool Model: OPEN_GR
Performed: Tue Dec 18 20:50:11 2018

Calibrator Value: 1.0 GAPI

Background Reading: 0.0 cps
Calibrator Reading: 1.0 cps

Sensitivity: 0.2300 GAPI/cps