

DUAL INDUCTION LOG

Company L. D. DRILLING, INC.
 Well #1-5 GARY
 Field WILDCAT
 County LANE
 State KANSAS

Company L. D. DRILLING, INC.
 Well #1-5 GARY
 Field WILDCAT
 County LANE State KANSAS

Location: 1650' FSL & 2970' FEL
 SE - NE - SW
 API # : 15-101-22618-0000
 Permanent Datum GROUND LEVEL Elevation 2724
 Log Measured From KELLY BUSHING 5' A.G.L.
 Drilling Measured From KELLY BUSHING
 Elevation
 K.B. 2729
 D.F. 2727
 G.L. 2724

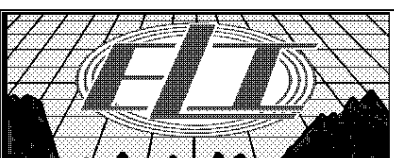
| | |
|------------------------------|---------------|
| Date | 1/4/19 |
| Run Number | ONE |
| Depth Driller | 4740 |
| Depth Logger | 4741 |
| Bottom Logged Interval | 4739 |
| Top Log Interval | 00 |
| Casing Driller | 8 5/8"@245' |
| Casing Logger | 245 |
| Bit Size | 7 7/8" |
| Type Fluid in Hole | CHEMICAL MUD |
| Density / Viscosity | 9.3/55 |
| pH / Fluid Loss | 9.5/9.2 |
| Source of Sample | FLOWLINE |
| Rim @ Meas. Temp | .900@80F |
| Rmf @ Meas. Temp | .675@80F |
| Rmc @ Meas. Temp | 1.08@80F |
| Source of Rmf / Rmc | MEASUREMENT |
| Rim @ BHT | .585@123F |
| Time Circulation Stopped | 2.5 HOURS |
| Time Logger on Bottom | 12:45 A.M. |
| Maximum Recorded Temperature | 123F |
| Equipment Number | 922339 |
| Location | HAYS, KANSAS |
| Recorded By | JEFF LUEBBERS |
| Witnessed By | KIM SHOEMAKER |

<<< Fold Here >>>

All interpretations are opinions based on inferences from electrical or other measurements and we cannot and do not guarantee the accuracy or correctness of any interpretation, and we shall not, except in the case of gross or willful negligence on our part, be liable or responsible for any loss, costs, damages, or expenses incurred or sustained by anyone resulting from any interpretation made by any of our officers, agents or employees. These interpretations are also subject to our general terms and conditions set out in our current Price Schedule.

Comments

THANK YOU FOR USING ELI WIRELINE HAYS, KANSAS (785) 628-6395
 DIRECTIONS
 ALAMOTA, KS. (HWY 96 & TURKEY RED RD.) 3S. TO "RD. 110", 1 1/2W., N. INTO



MAIN SECTION

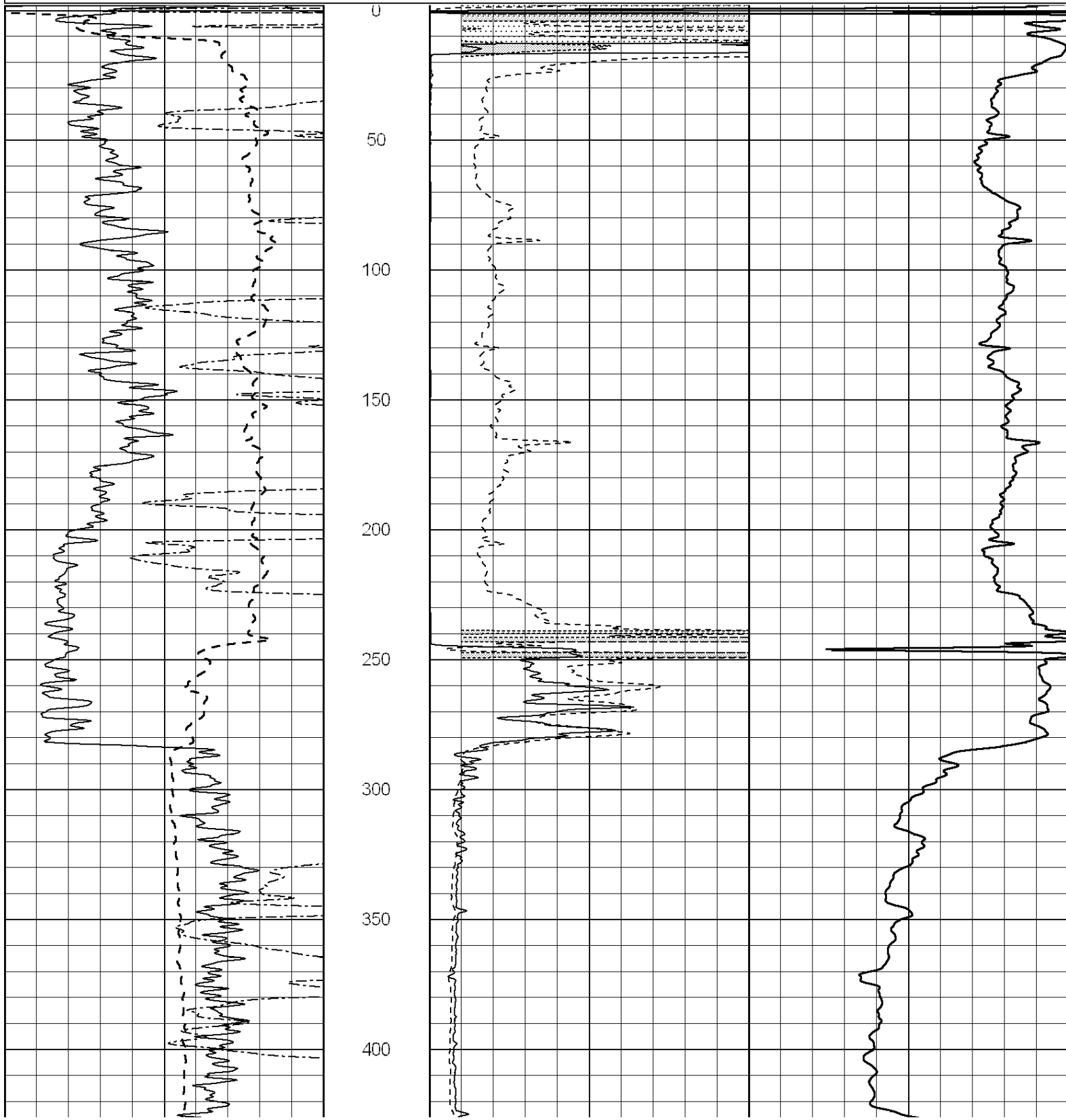
Database File: 3328ddn.db
 Dataset Pathname: pass3.7
 Presentation Format: dil2
 Dataset Creation: Fri Jan 04 02:22:18 2019
 Charted by: Depth in Feet scaled 1:600

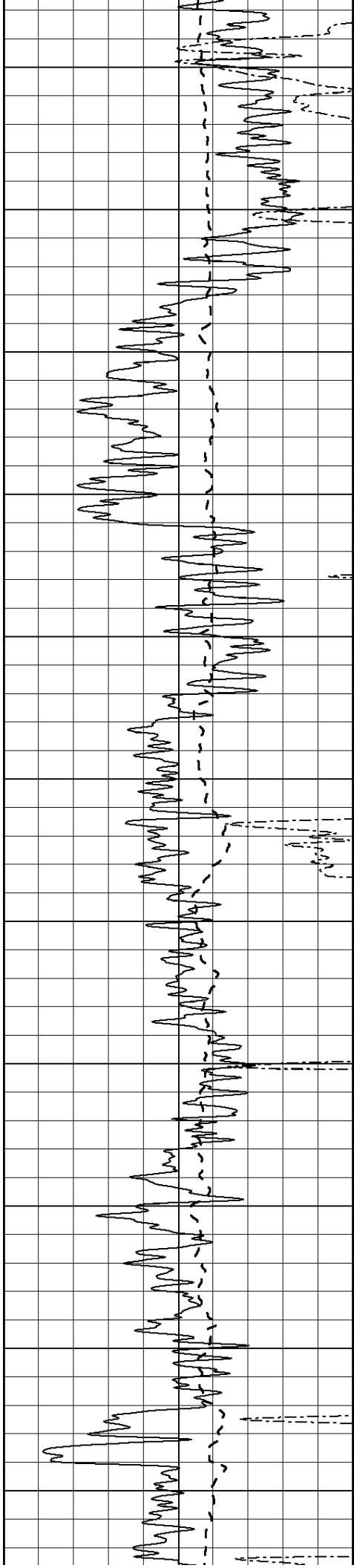
| | | |
|------|------------------|-----|
| 0 | Gamma Ray (GAPI) | 150 |
| -100 | SP (mV) | 100 |
| 0 | RWA (Ohm-m) | 1 |

| | | |
|---|--------------|----|
| 0 | RLL3 (Ohm-m) | 50 |
| 0 | RILD (Ohm-m) | 50 |

1000 CILD (mmho/m) 0

| | | |
|----|------------------|-----|
| 50 | RILD X10 (Ohm-m) | 500 |
| 50 | RLL3 X10 (Ohm-m) | 500 |





450

500

550

600

650

700

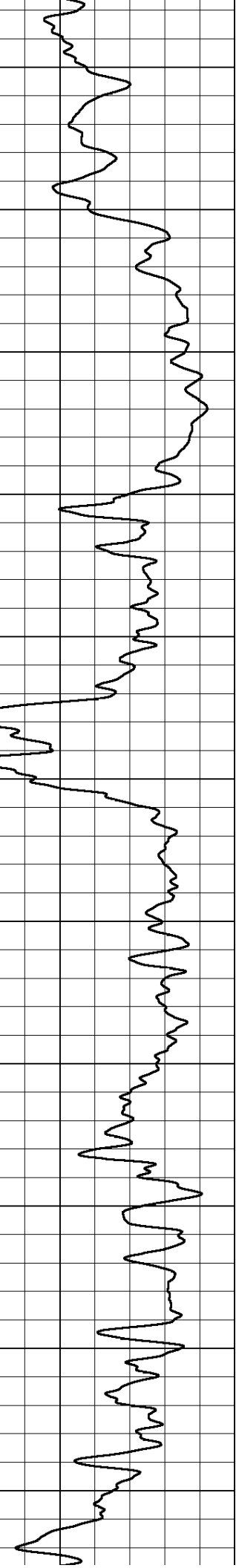
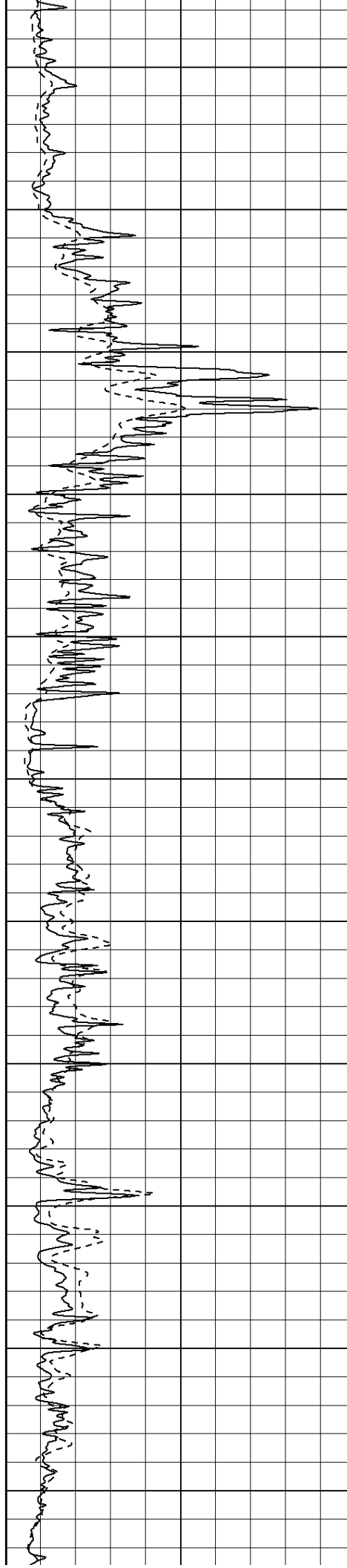
750

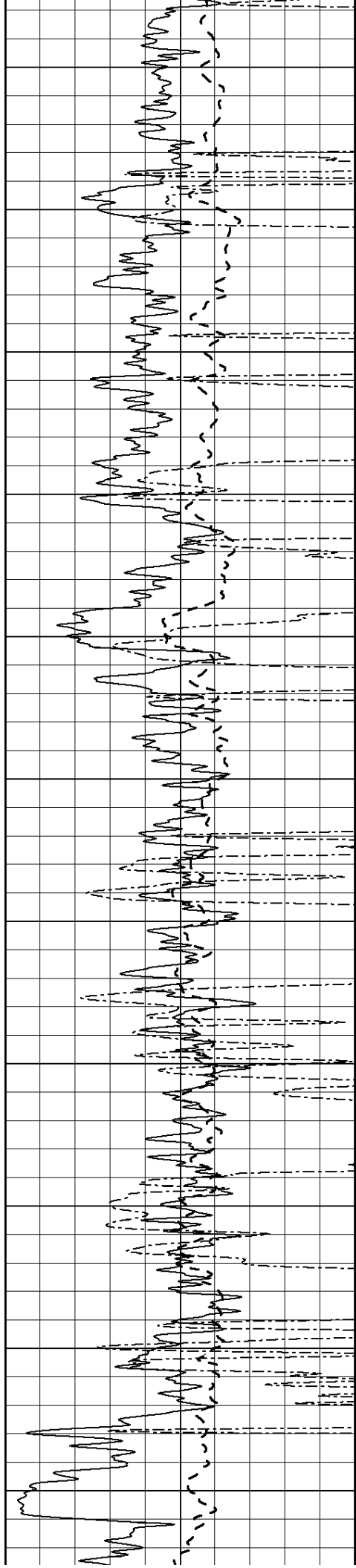
800

850

900

950





1000

1050

1100

1150

1200

1250

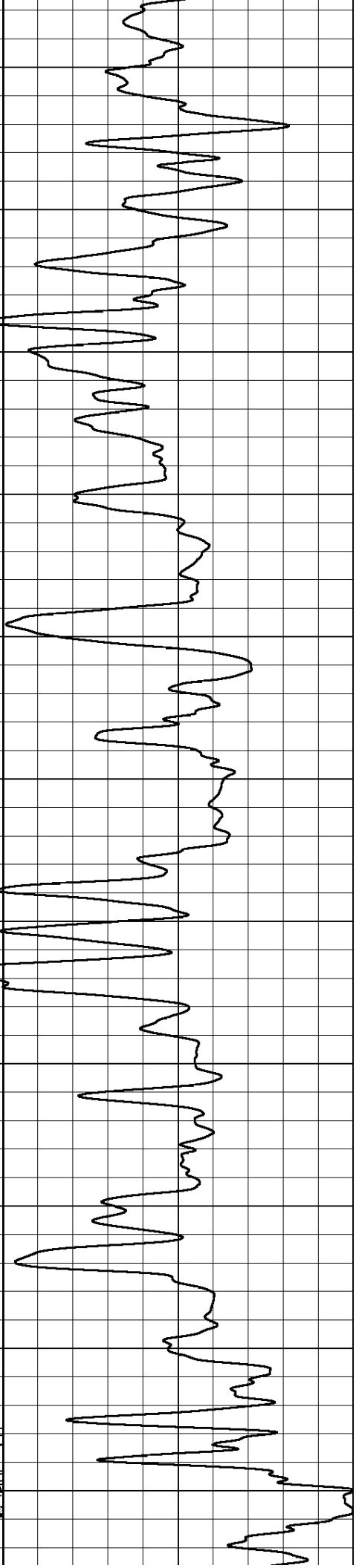
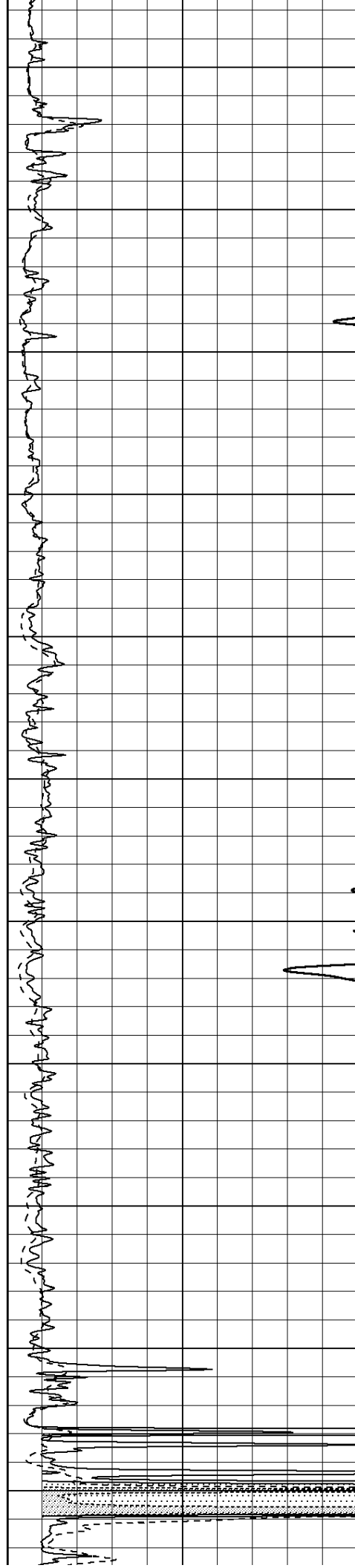
1300

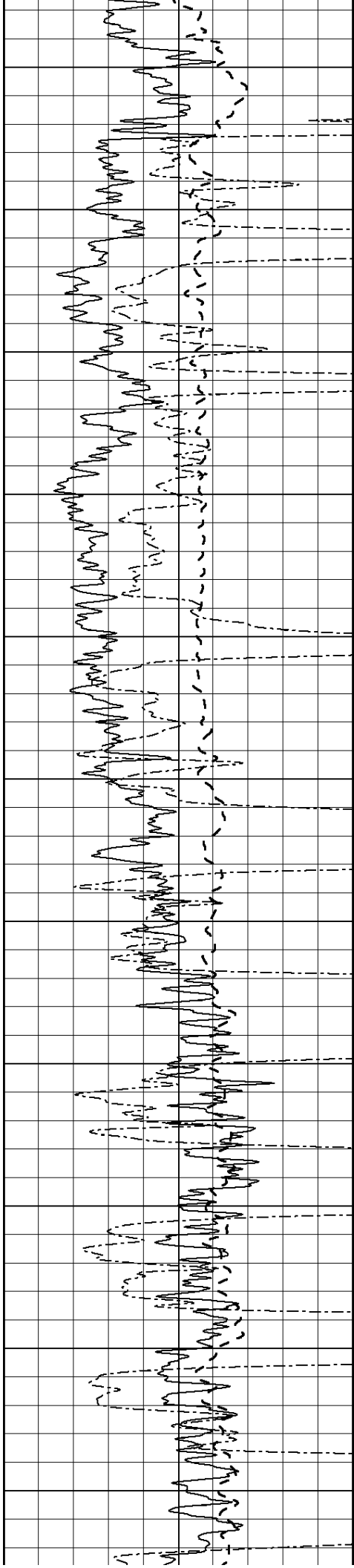
1350

1400

1450

1500





1550

1600

1650

1700

1750

1800

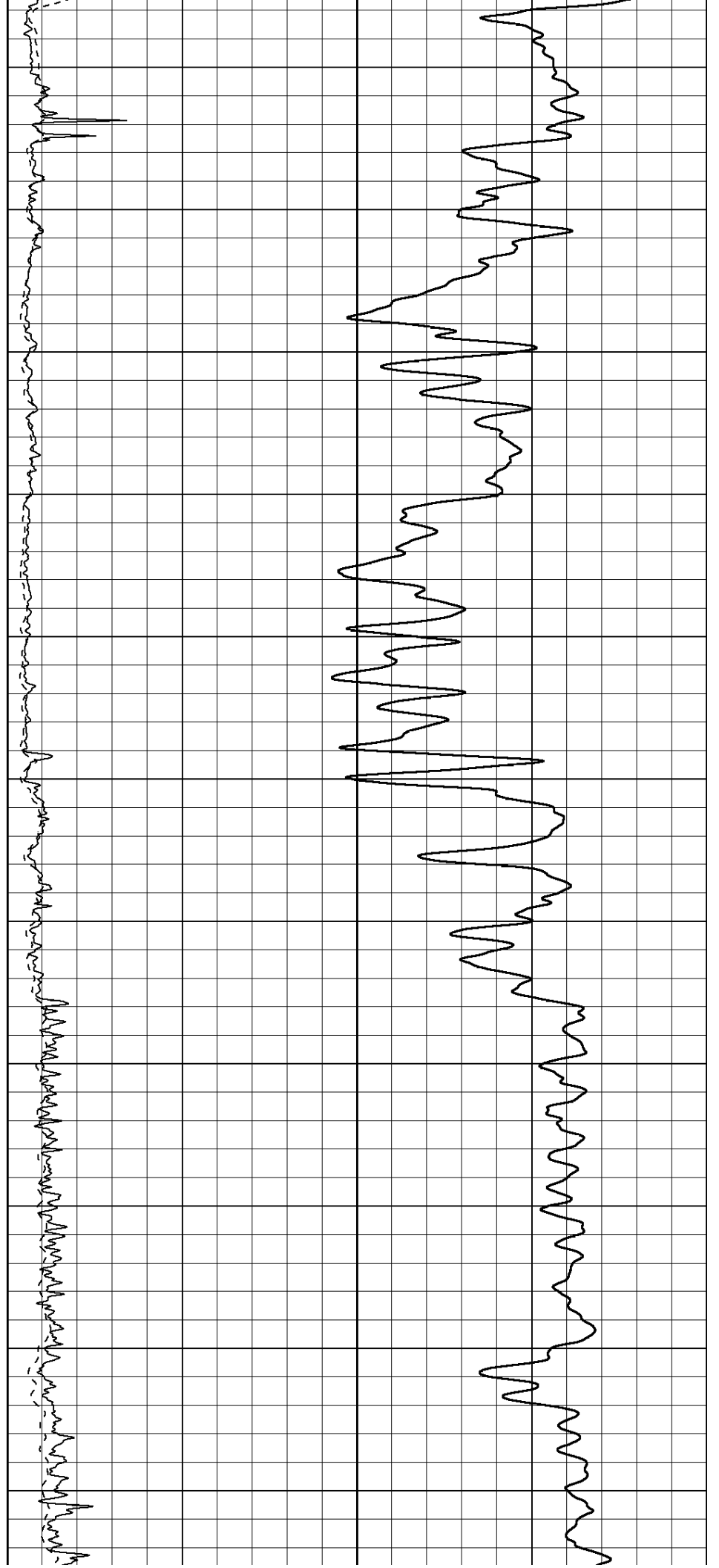
1850

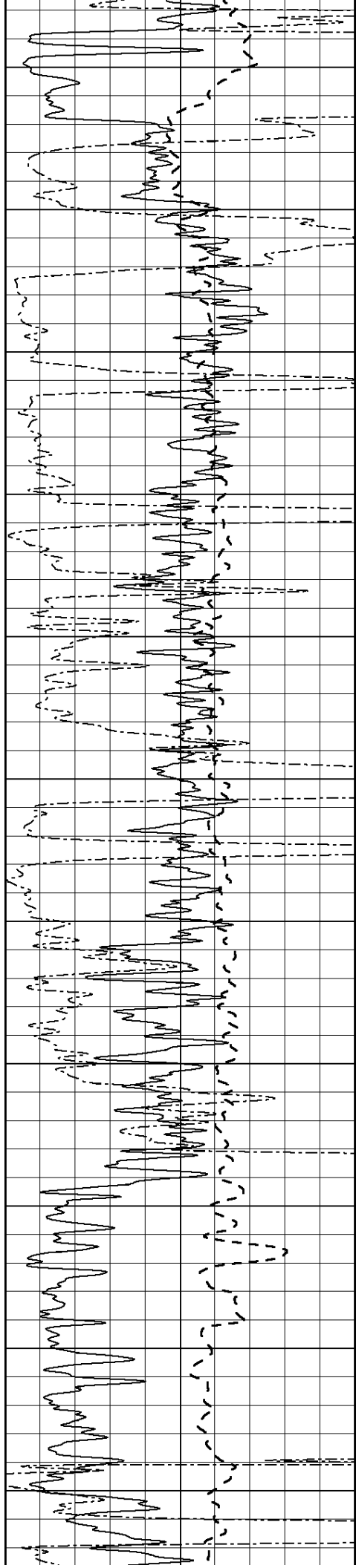
1900

1950

2000

2050





2100

2150

2200

2250

2300

2350

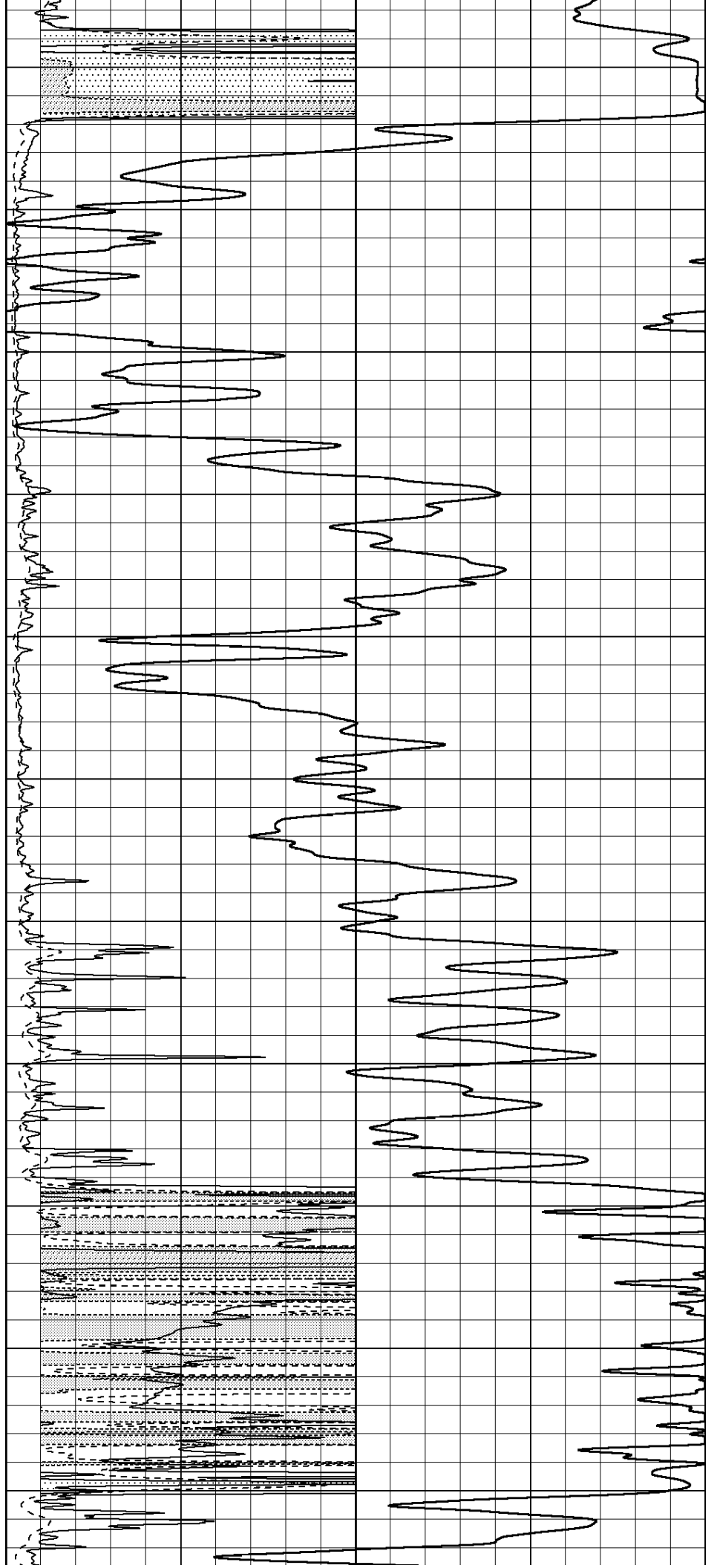
2400

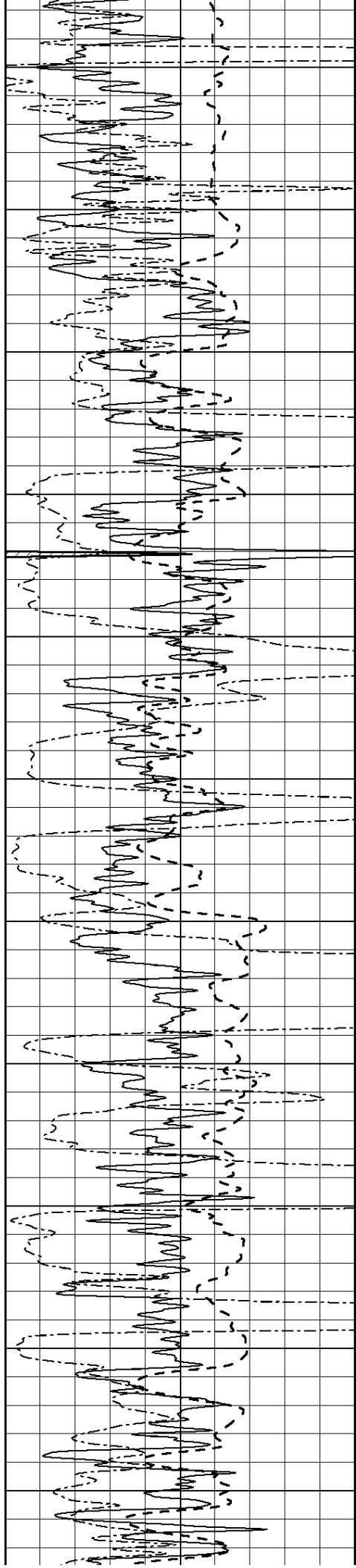
2450

2500

2550

2600





2650

2700

2750

2800

2850

2900

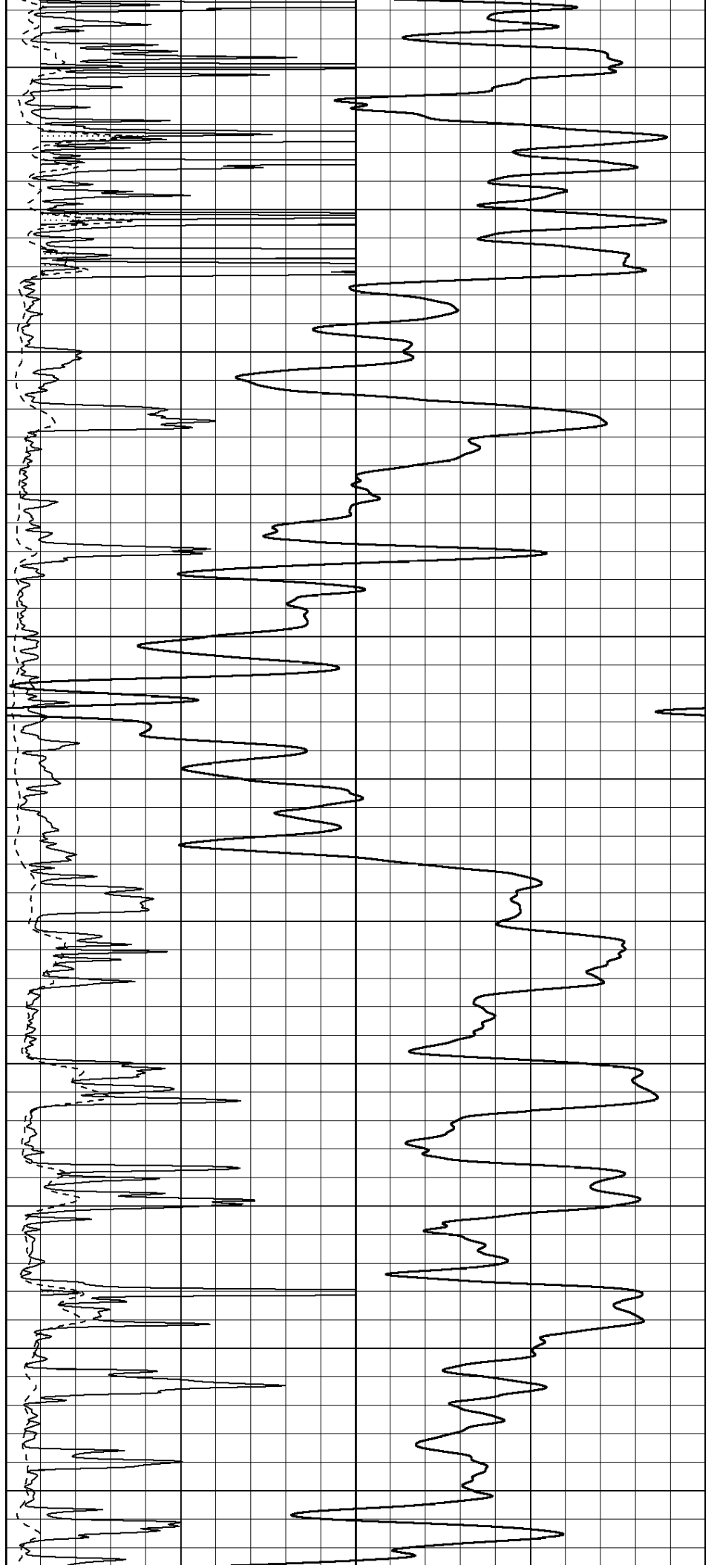
2950

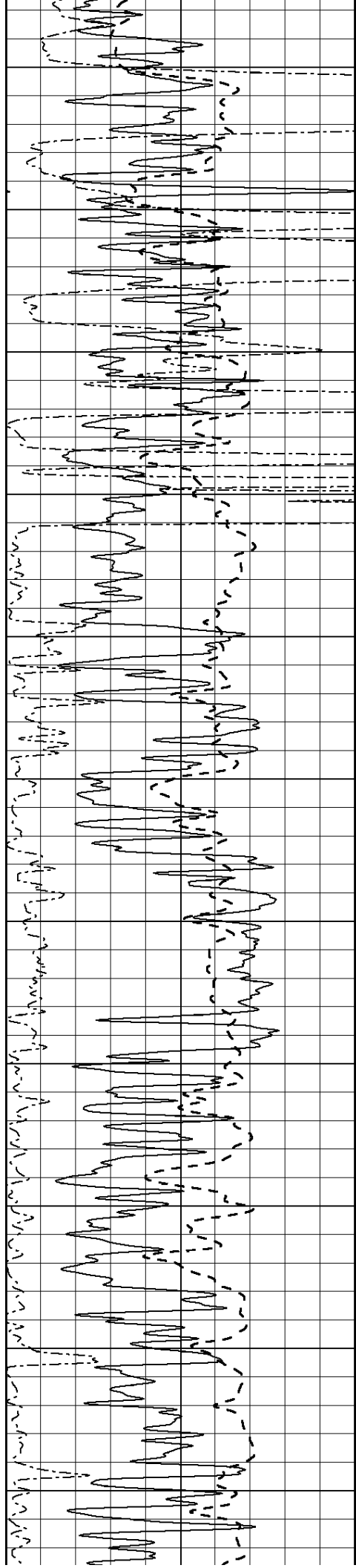
3000

3050

3100

3150





3200

3250

3300

3350

3400

3450

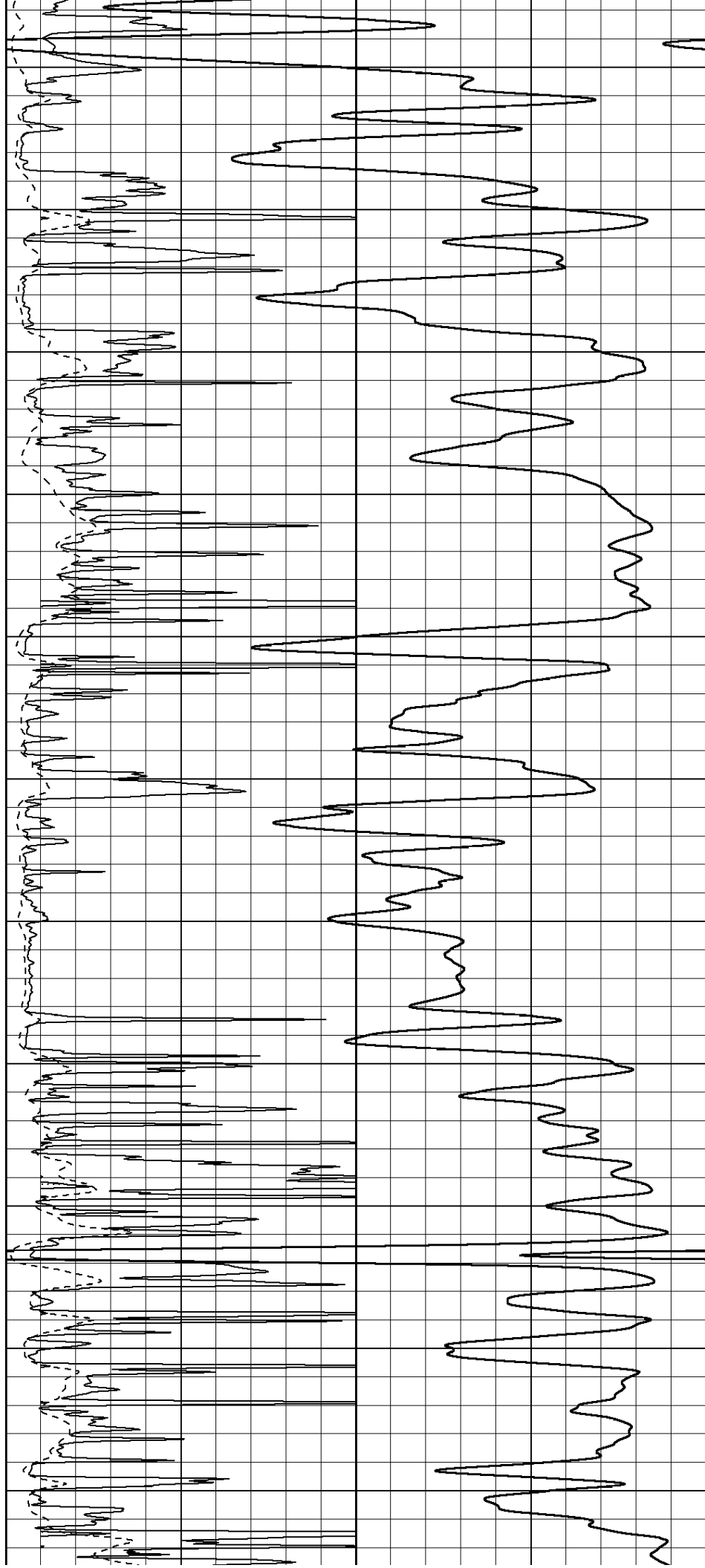
3500

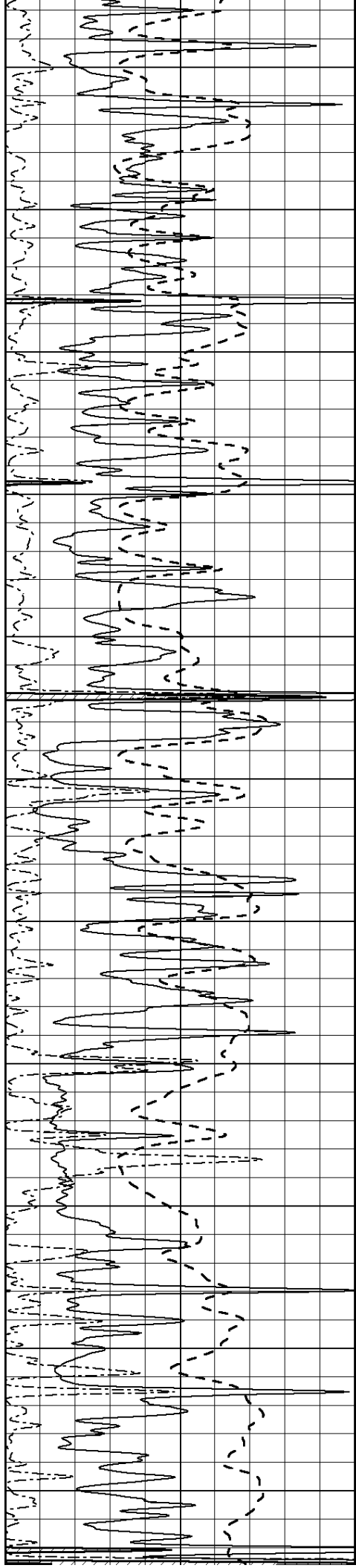
3550

3600

3650

3700





3750

3800

3850

3900

3950

4000

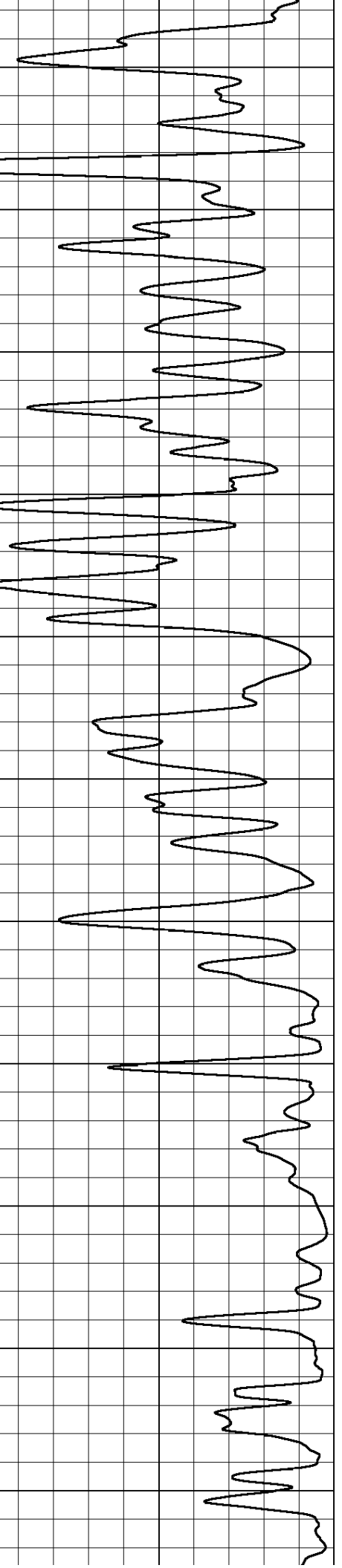
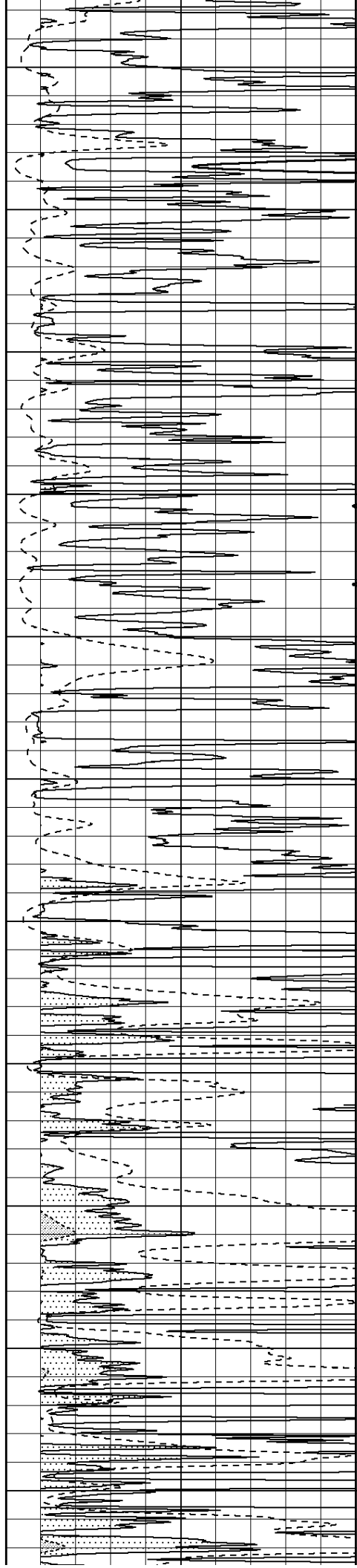
4050

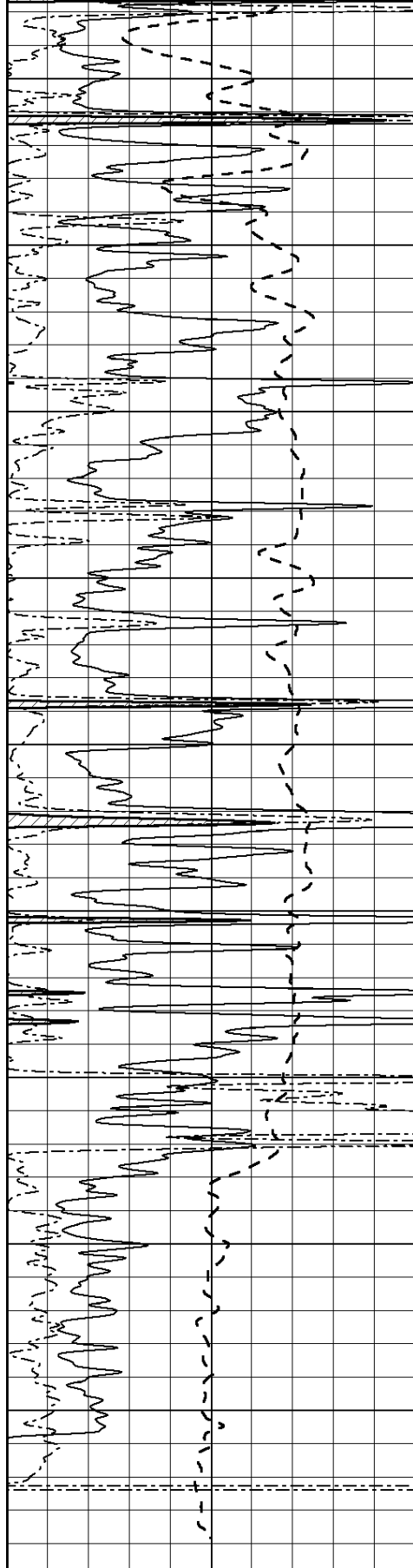
4100

4150

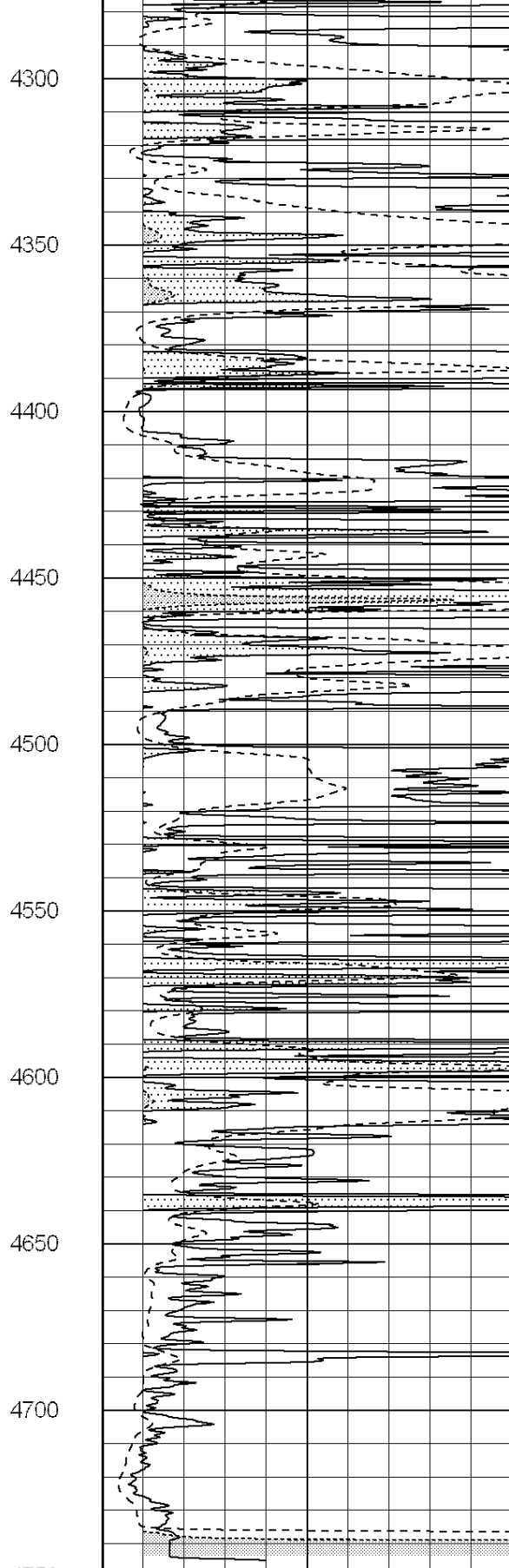
4200

4250

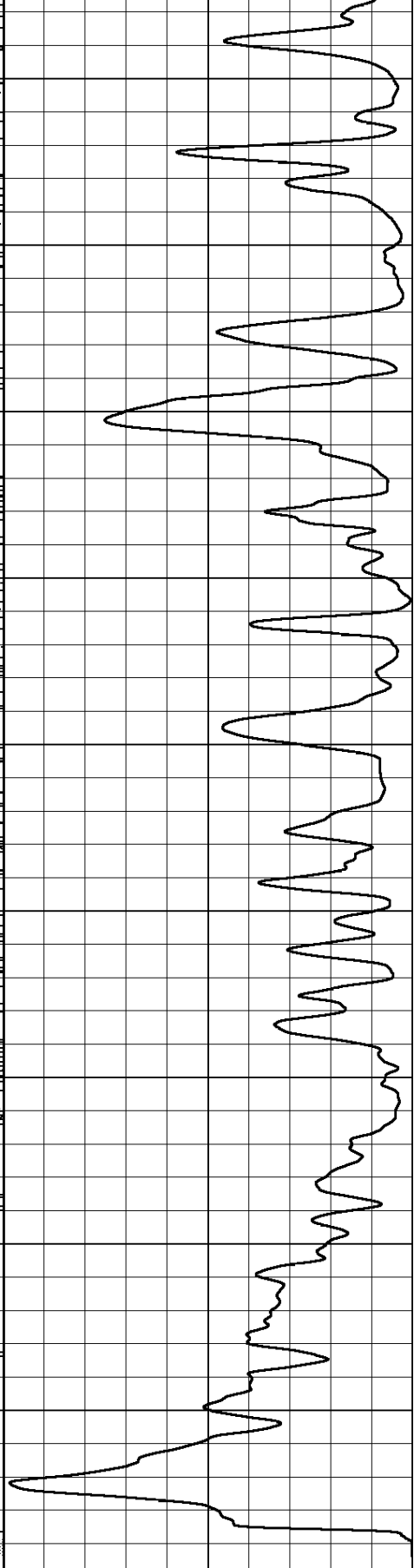




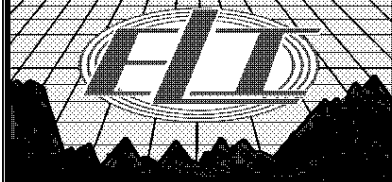
| | | |
|------|------------------|-----|
| 0 | Gamma Ray (GAPI) | 150 |
| -100 | SP (mV) | 100 |
| 0 | RWA (Ohm-m) | 1 |



| | | |
|------|---------------|----|
| 0 | RLL3 (Ohm-m) | 50 |
| 0 | RILD (Ohm-m) | 50 |
| 1000 | CILD (mmho/m) | 0 |



| | | |
|----|------------------|-----|
| 50 | RILD X10 (Ohm-m) | 500 |
| 50 | RLL3 X10 (Ohm-m) | 500 |

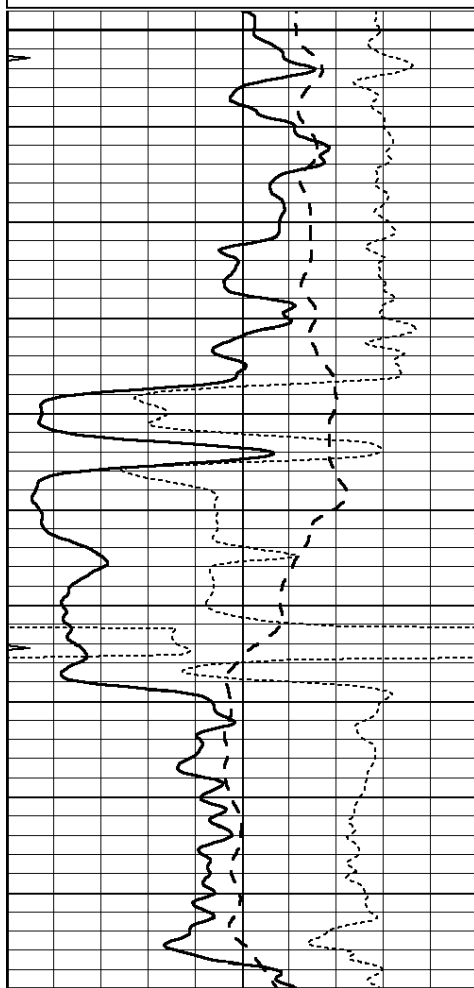


ANHYDRITE

Database File: 3328ddn.db
 Dataset Pathname: pass3.8
 Presentation Format: _dil
 Dataset Creation: Fri Jan 04 02:22:59 2019
 Charted by: Depth in Feet scaled 1:240

| | | |
|------|------------------|-----|
| 0 | GAMMA RAY (GAPI) | 150 |
| -100 | SP (mV) | 100 |
| -250 | Rxo/Rt | 50 |
| 0 | MINMK | 20 |

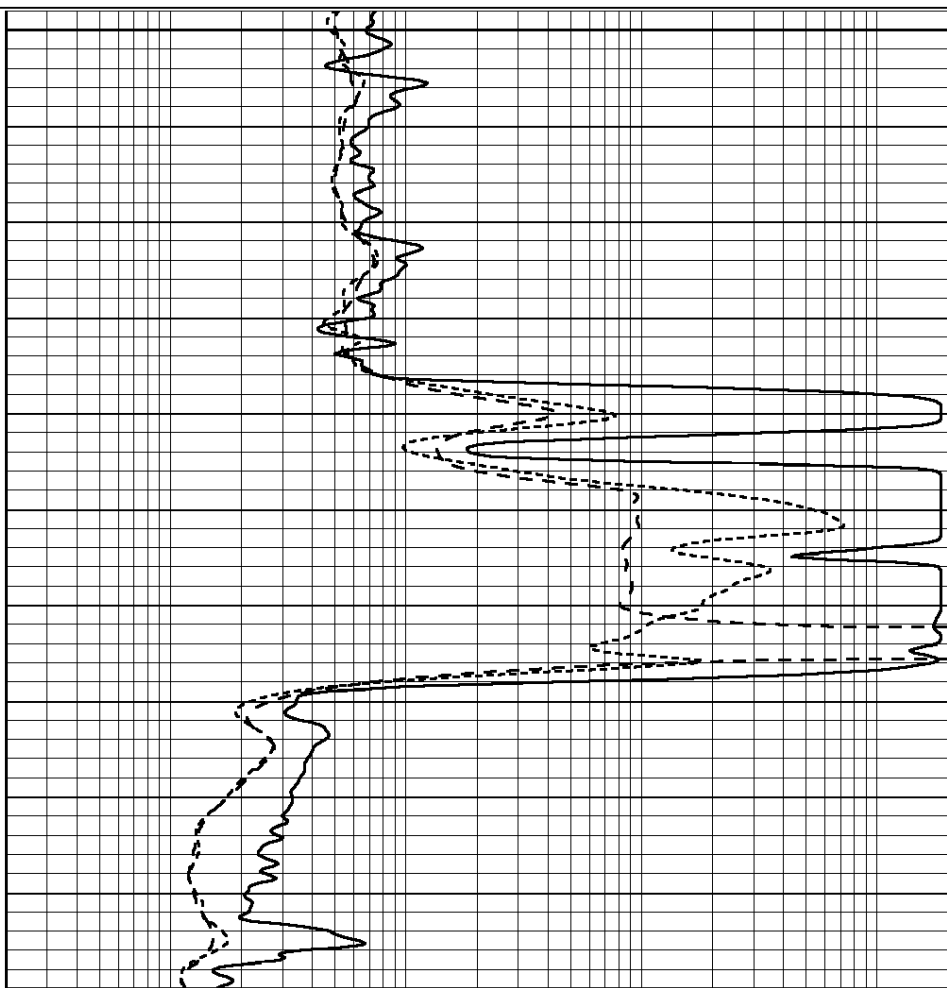
| | | |
|-----|--------------------------|------|
| 0.2 | SHALLOW GUARD (Ohm-m) | 2000 |
| 0.2 | DEEP INDUCTION (Ohm-m) | 2000 |
| 0.2 | MEDIUM INDUCTION (Ohm-m) | 2000 |



2050

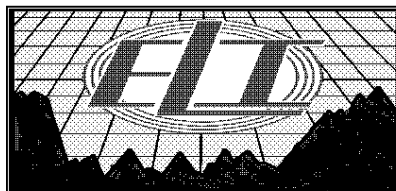
2100

2150



| | | |
|------|------------------|-----|
| 0 | GAMMA RAY (GAPI) | 150 |
| -100 | SP (mV) | 100 |
| -250 | Rxo/Rt | 50 |
| 0 | MINMK | 20 |

| | | |
|-----|--------------------------|------|
| 0.2 | SHALLOW GUARD (Ohm-m) | 2000 |
| 0.2 | DEEP INDUCTION (Ohm-m) | 2000 |
| 0.2 | MEDIUM INDUCTION (Ohm-m) | 2000 |

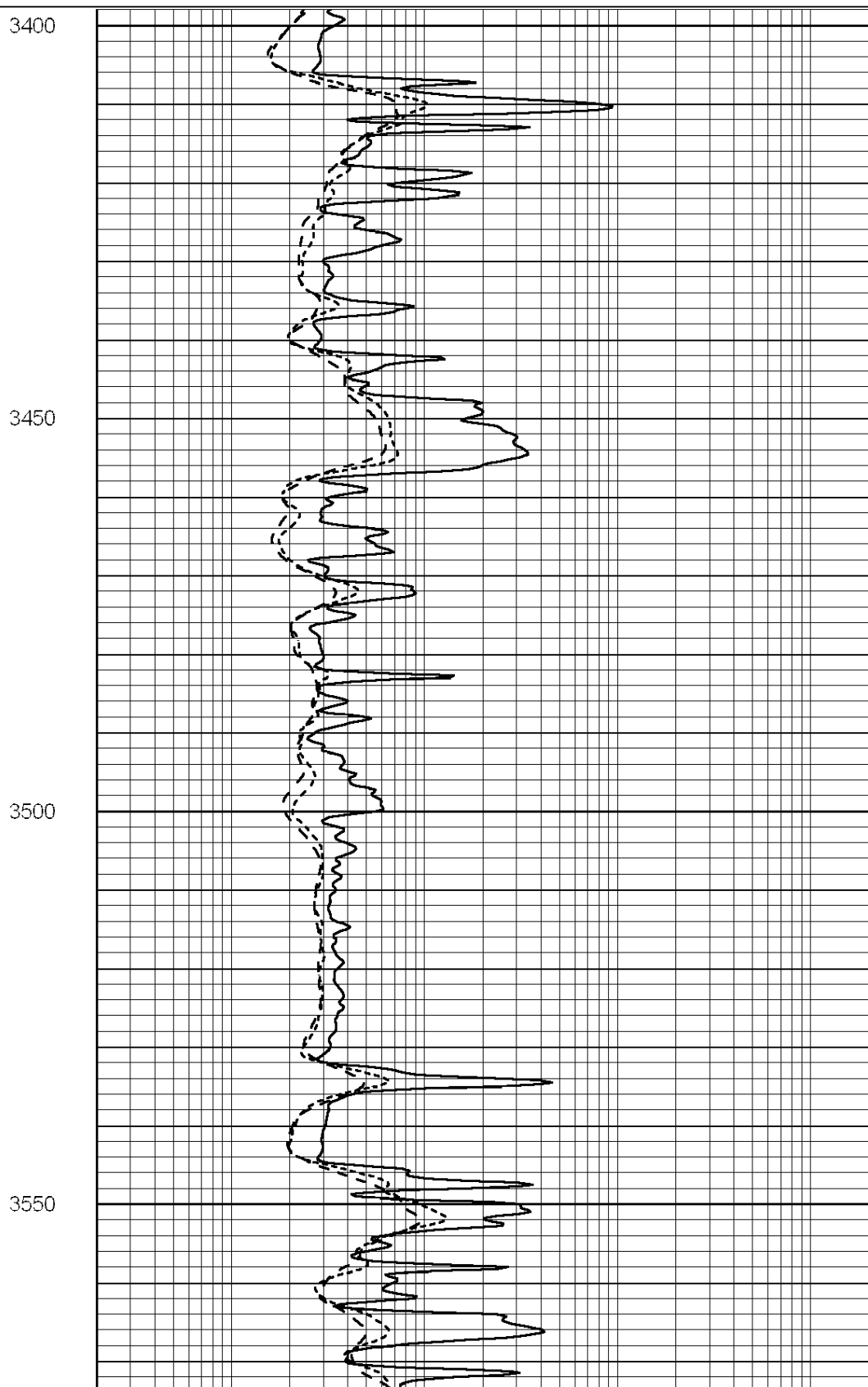
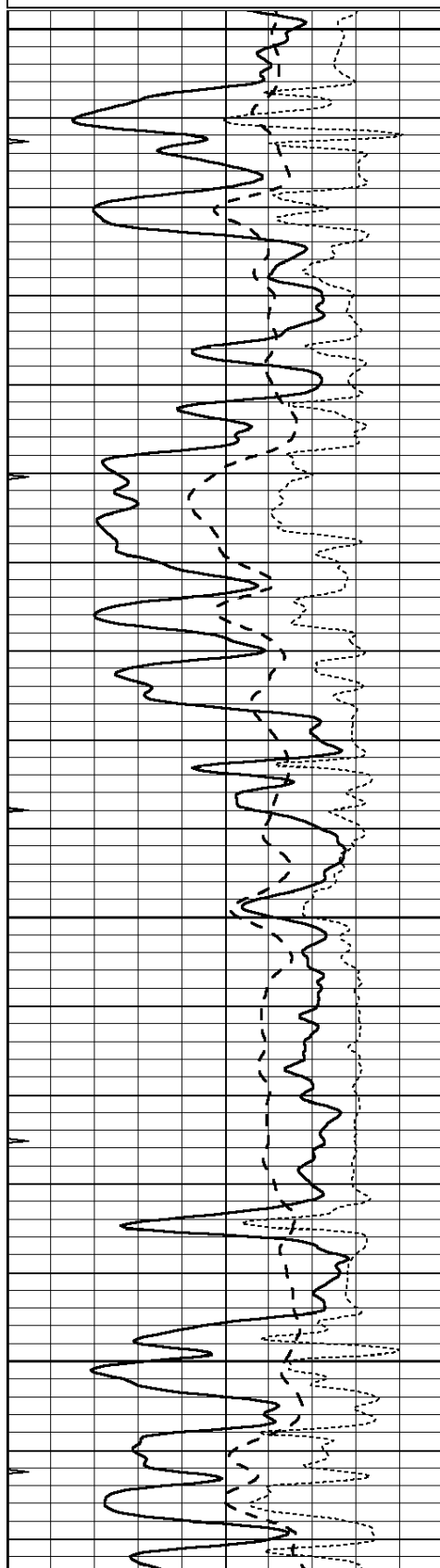


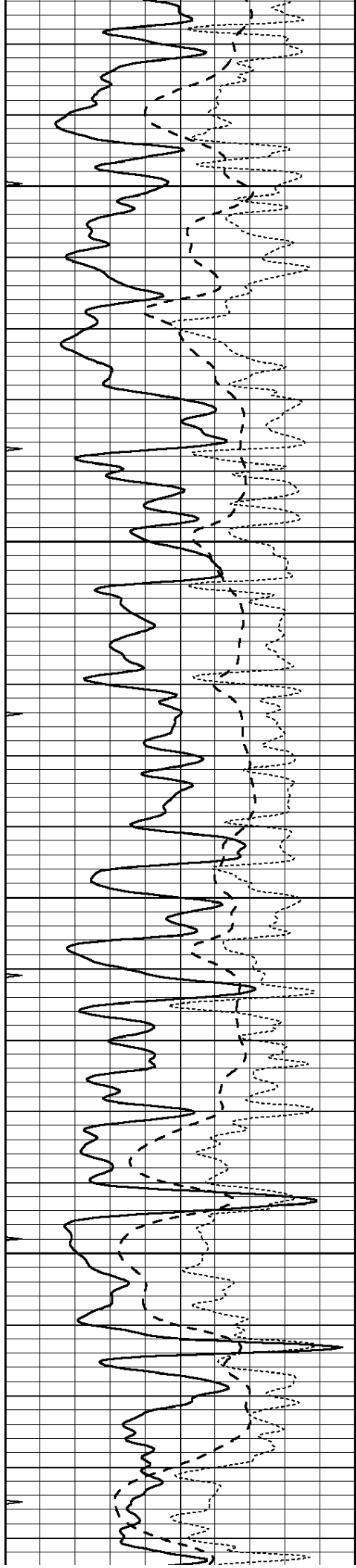
MAIN SECTION

Database File: 3328ddn.db
 Dataset Pathname: pass3.7
 Presentation Format: _dil
 Dataset Creation: Fri Jan 04 02:22:18 2019
 Charted by: Depth in Feet scaled 1:240

| | | |
|------|------------------|-----|
| 0 | GAMMA RAY (GAPI) | 150 |
| -100 | SP (mV) | 100 |
| -250 | Rxo/Rt | 50 |
| 0 | MINMK | 20 |

| | | |
|-----|--------------------------|------|
| 0.2 | SHALLOW GUARD (Ohm-m) | 2000 |
| 0.2 | DEEP INDUCTION (Ohm-m) | 2000 |
| 0.2 | MEDIUM INDUCTION (Ohm-m) | 2000 |



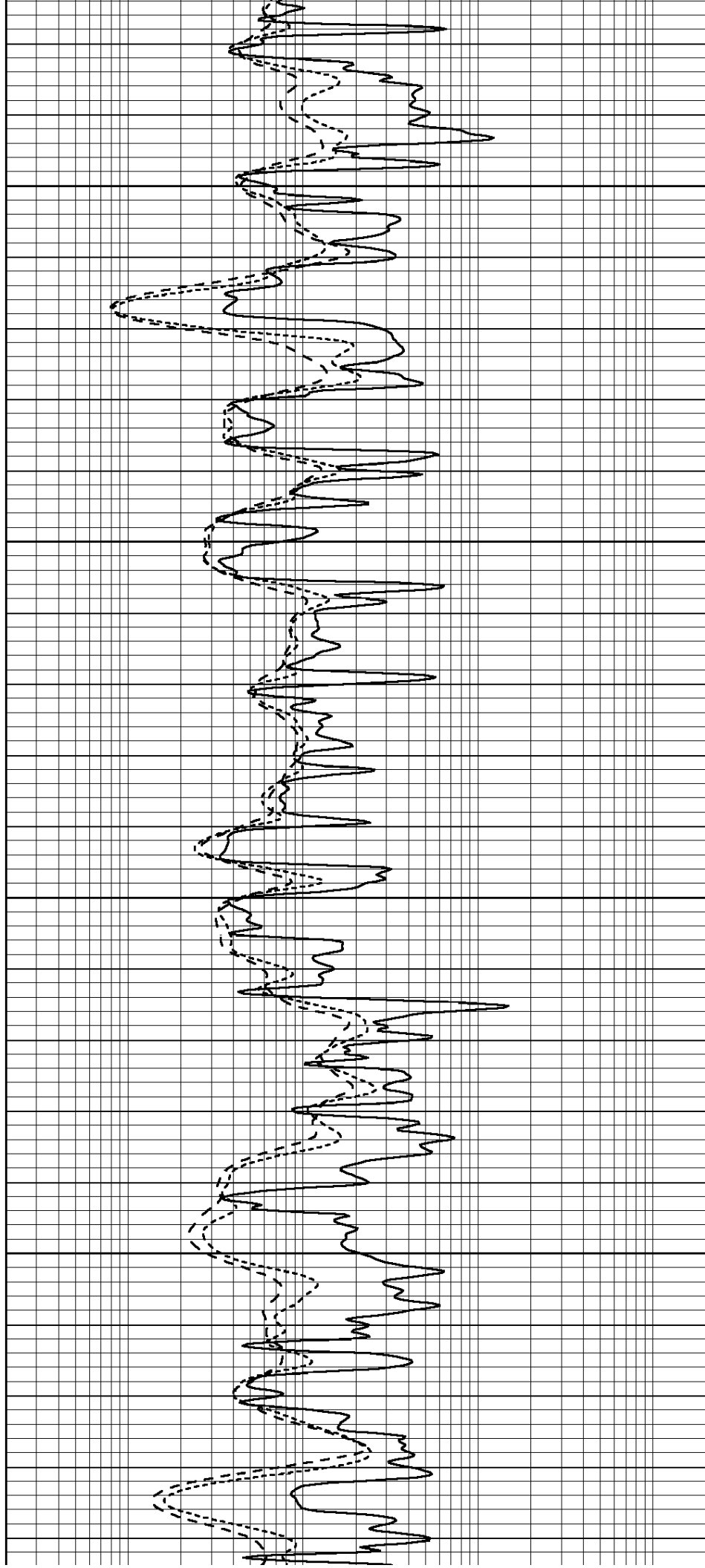


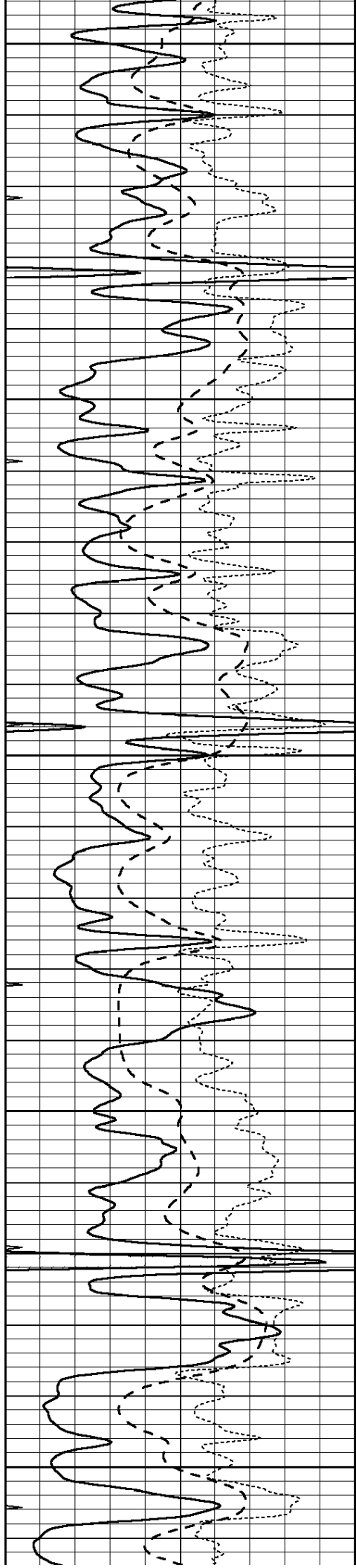
3600

3650

3700

3750





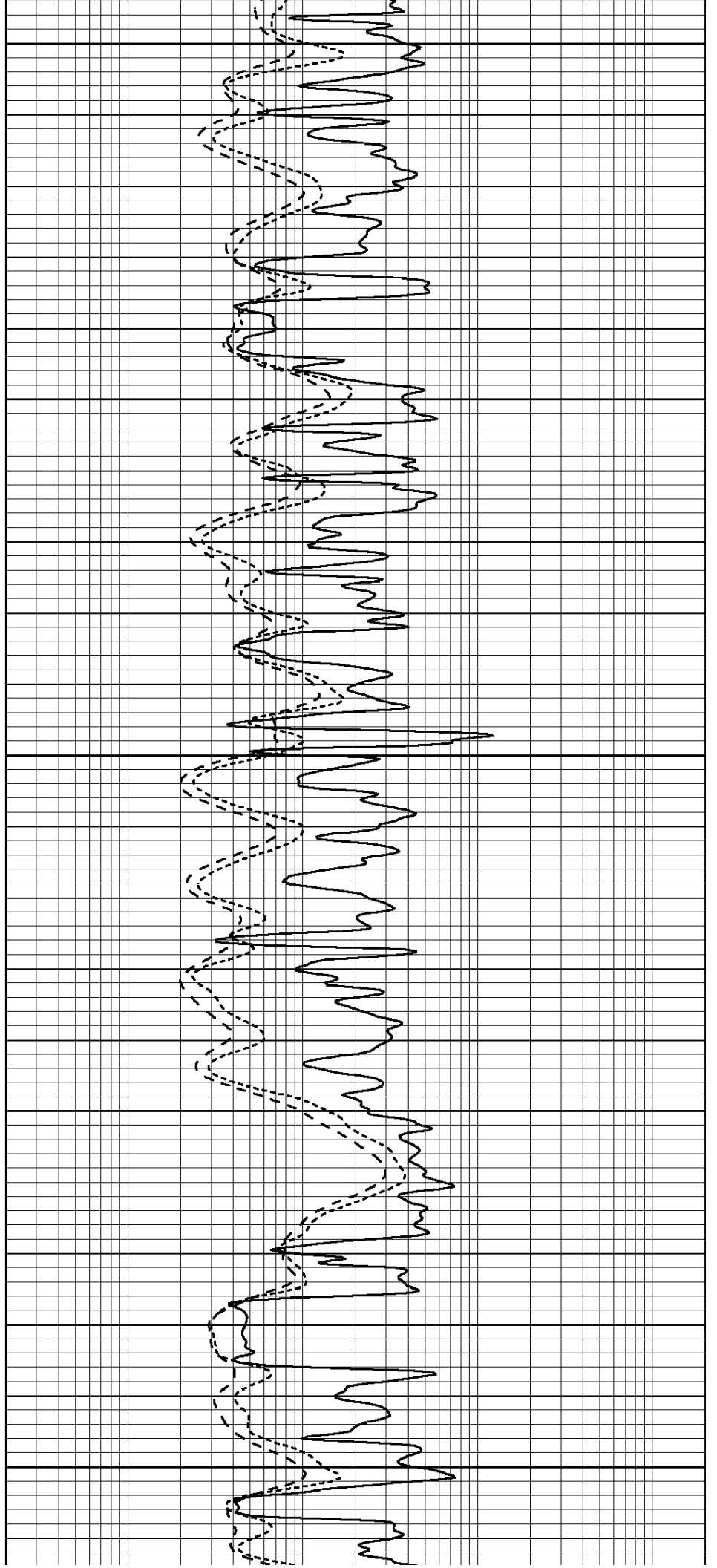
3800

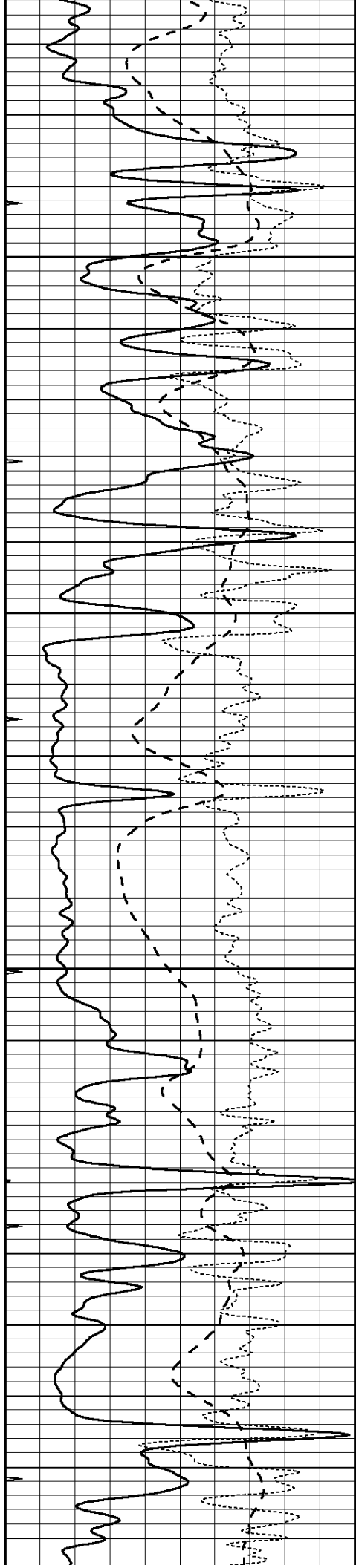
3850

3900

3950

4000



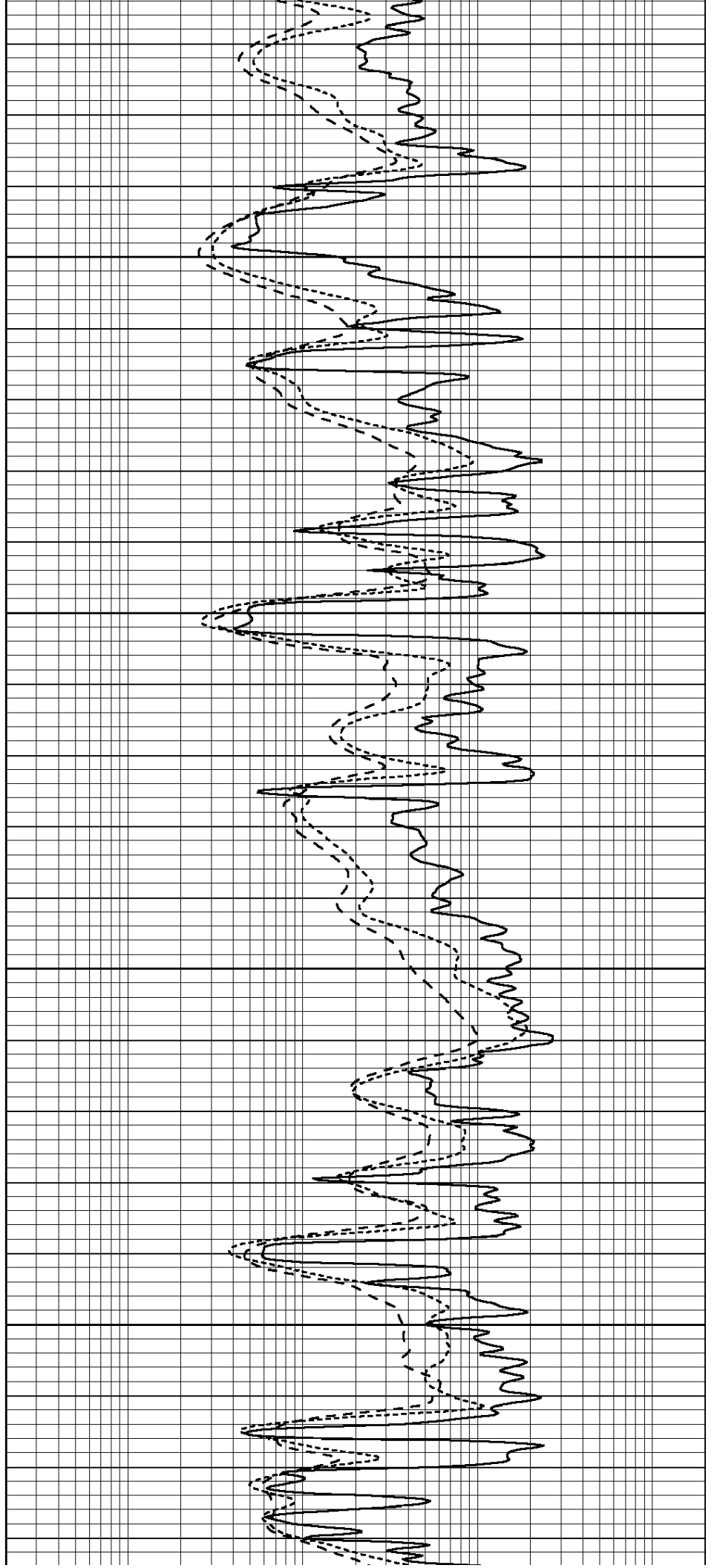


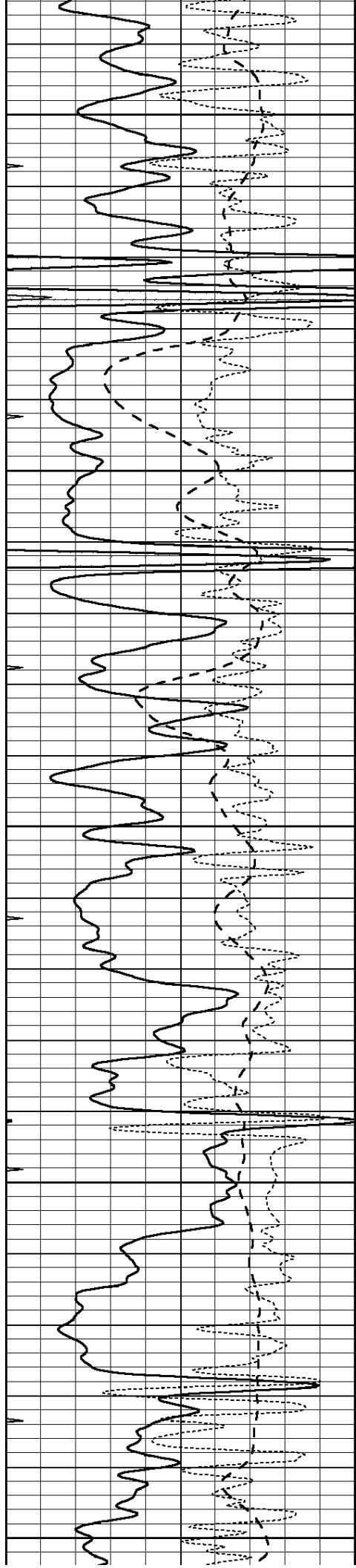
4050

4100

4150

4200





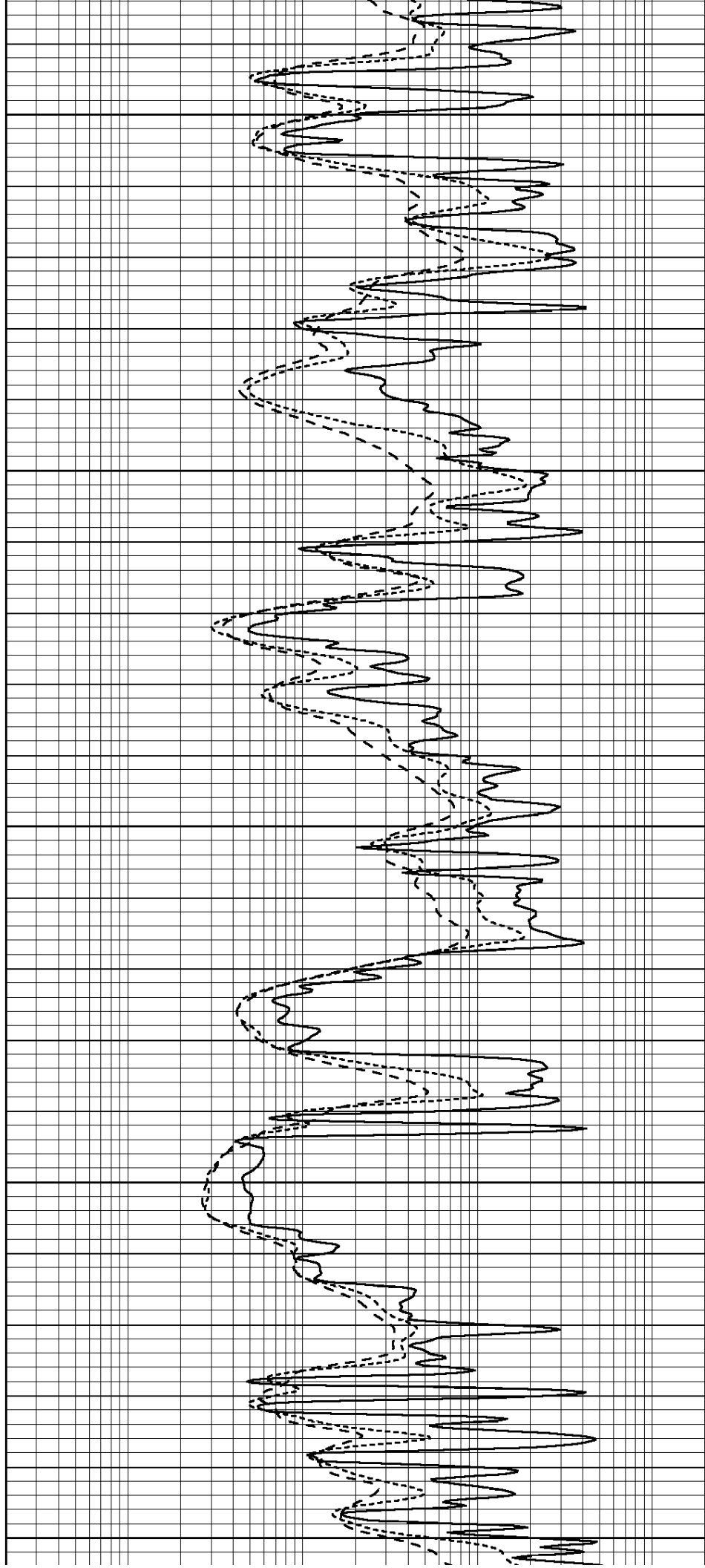
4250

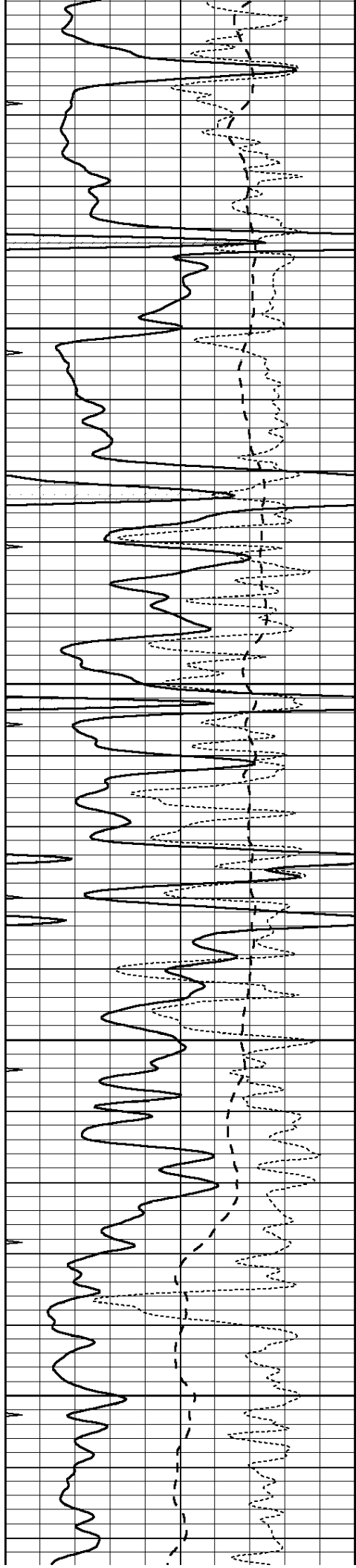
4300

4350

4400

4450



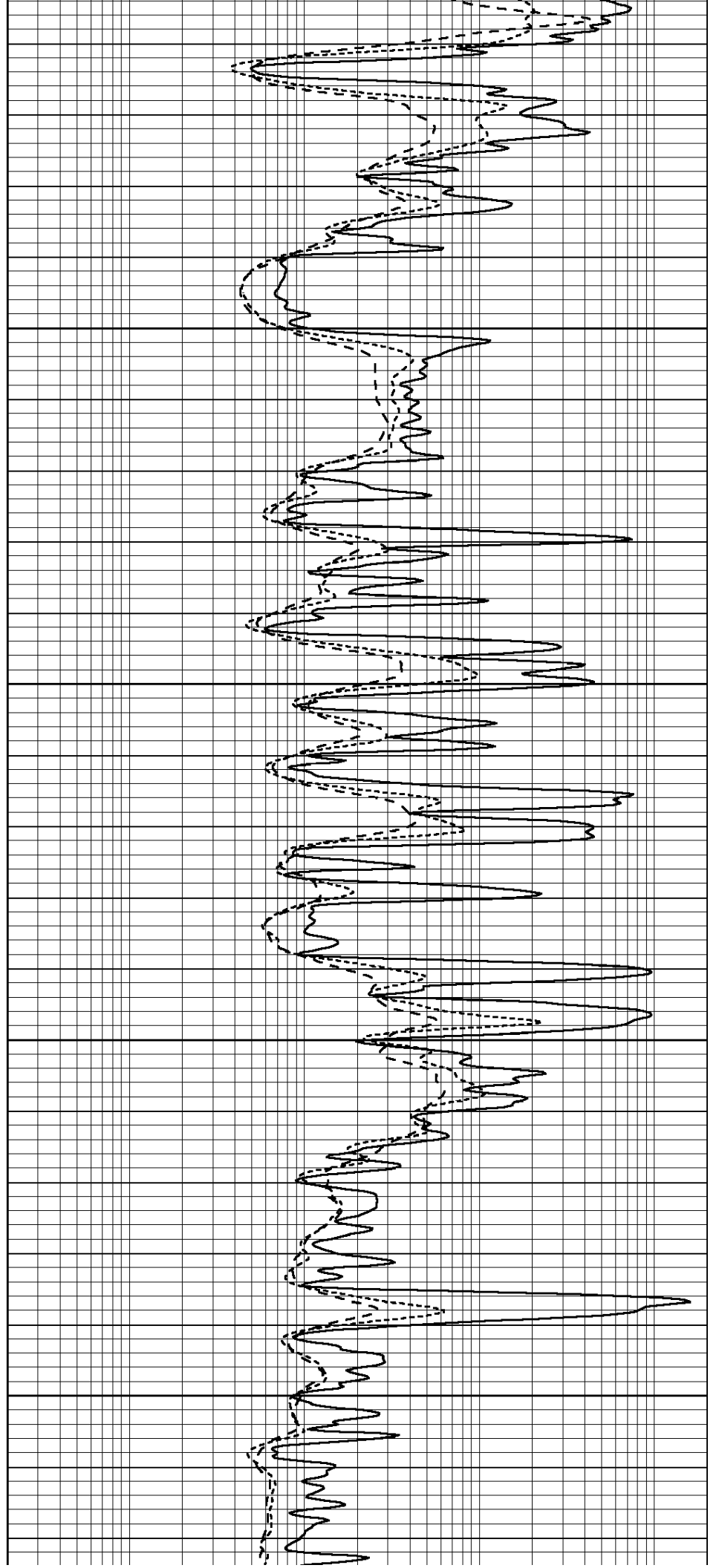


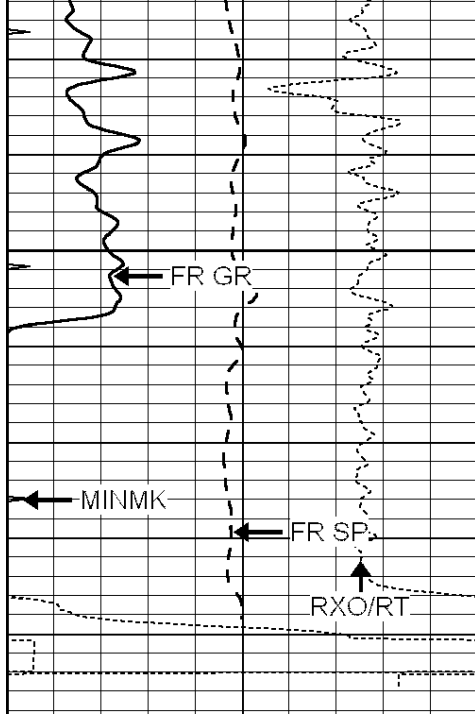
4500

4550

4600

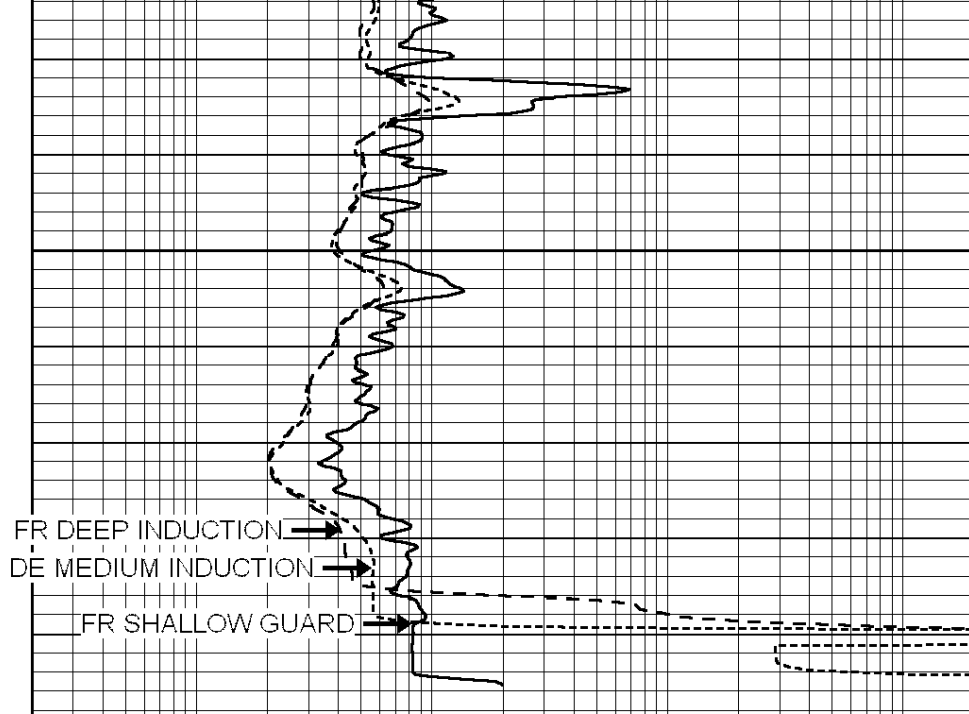
4650



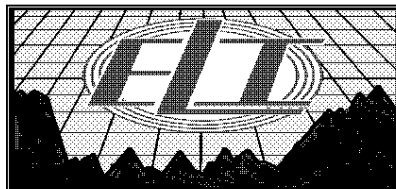


| | | |
|------|------------------|-----|
| 0 | GAMMA RAY (GAPI) | 150 |
| -100 | SP (mV) | 100 |
| -250 | Rxo/Rt | 50 |
| 0 | MINMK | 20 |

4700



| | | |
|-----|--------------------------|------|
| 0.2 | SHALLOW GUARD (Ohm-m) | 2000 |
| 0.2 | DEEP INDUCTION (Ohm-m) | 2000 |
| 0.2 | MEDIUM INDUCTION (Ohm-m) | 2000 |

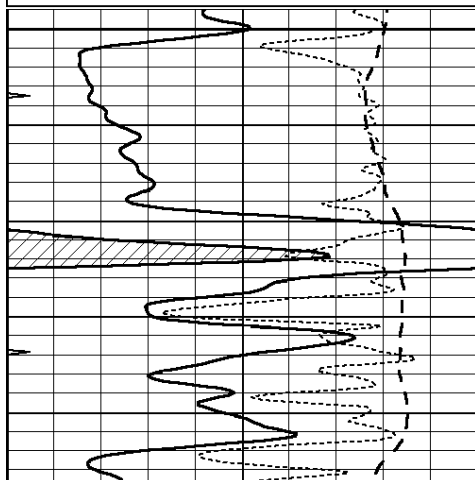


REPEAT SECTION

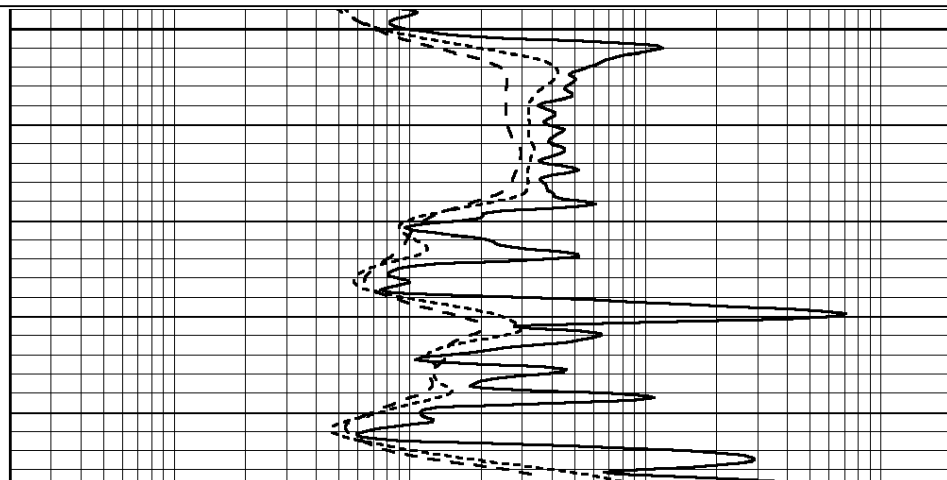
Database File: 3328ddn.db
 Dataset Pathname: pass2.3
 Presentation Format: _dil
 Dataset Creation: Fri Jan 04 01:47:54 2019 by Calc SOC 120430
 Charted by: Depth in Feet scaled 1:240

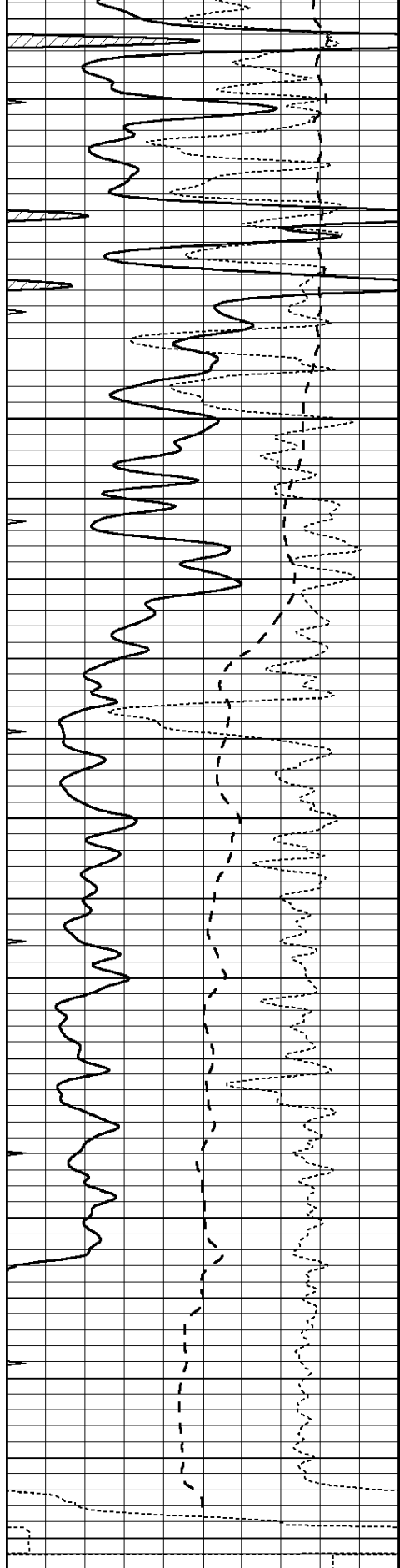
| | | |
|------|------------------|-----|
| 0 | GAMMA RAY (GAPI) | 150 |
| -100 | SP (mV) | 100 |
| -250 | Rxo/Rt | 50 |
| 0 | MINMK | 20 |

| | | |
|-----|--------------------------|------|
| 0.2 | SHALLOW GUARD (Ohm-m) | 2000 |
| 0.2 | DEEP INDUCTION (Ohm-m) | 2000 |
| 0.2 | MEDIUM INDUCTION (Ohm-m) | 2000 |

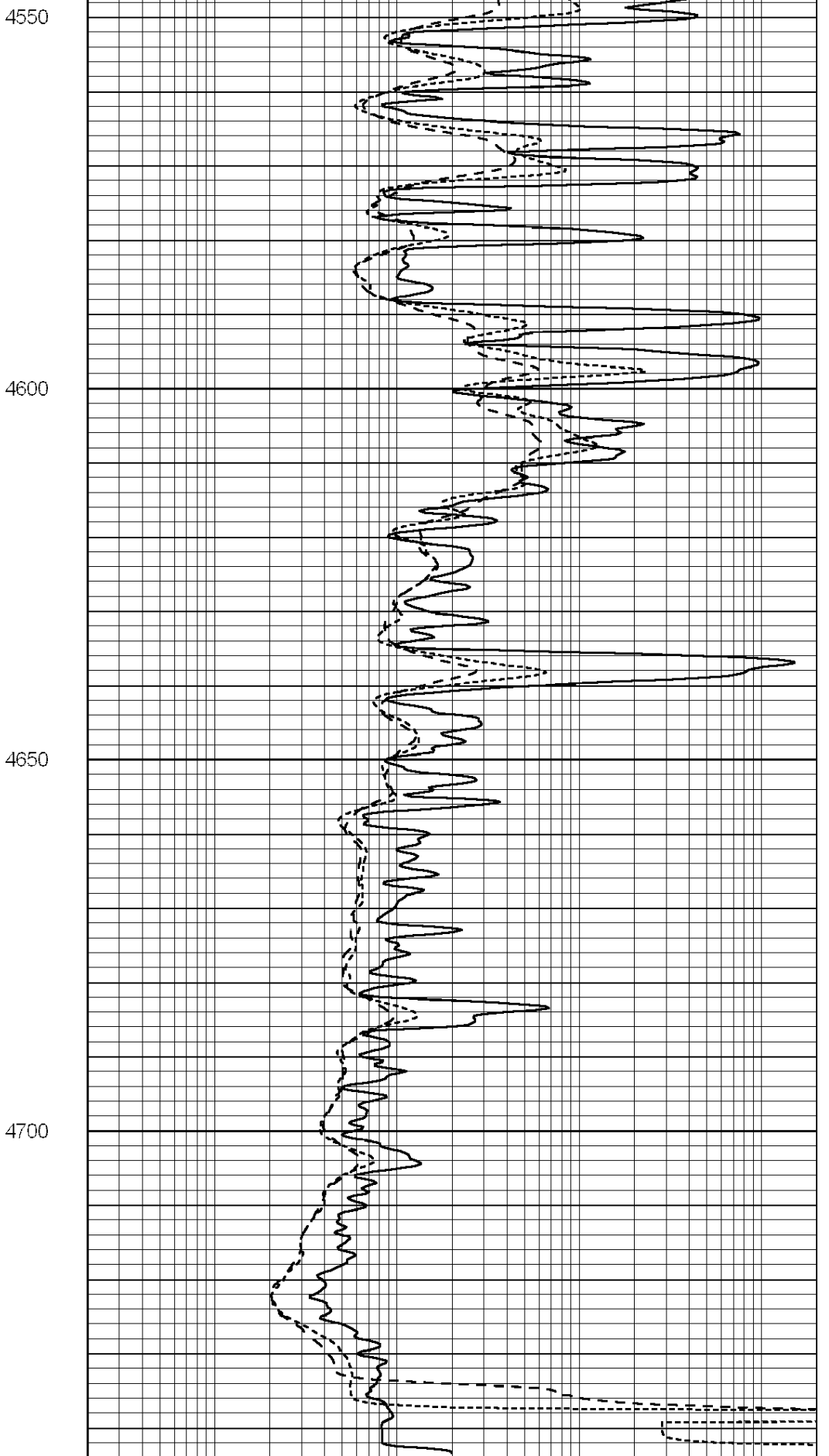


4500





| | | |
|------|------------------|-----|
| 0 | GAMMA RAY (GAPI) | 150 |
| -100 | SP (mV) | 100 |
| -250 | Rxo/Rt | 50 |
| 0 | MINMK | 20 |



| | | |
|-----|--------------------------|------|
| 0.2 | SHALLOW GUARD (Ohm-m) | 2000 |
| 0.2 | DEEP INDUCTION (Ohm-m) | 2000 |
| 0.2 | MEDIUM INDUCTION (Ohm-m) | 2000 |

Calibration Report

Database File: 1598ddn.db
 Dataset Pathname: pass4
 Dataset Creation: Wed Aug 30 02:13:00 2017 by Log SOC 120430

Dual Induction Calibration Report

Serial-Model: PROBE7-DILG
 Surface Cal Performed: Wed Aug 30 00:06:33 2017
 Downhole Cal Performed: Mon Jul 28 12:02:56 2008
 After Survey Verification Performed: Mon Jul 28 12:02:56 2008

Surface Calibration

| Loop: | Readings | | | References | | | Results | |
|-----------|----------|-------|---|------------|---------|--------|---------|---------|
| | Air | Loop | | Air | Loop | | m | b |
| Deep | -0.014 | 0.629 | V | 0.000 | 400.000 | mmho/m | 620.000 | 0.000 |
| Medium | 0.039 | 0.728 | V | 0.000 | 464.000 | mmho/m | 675.000 | -44.000 |
| Internal: | Zero | Cal | | Zero | Cal | | m | b |
| Deep | 0.011 | 0.610 | V | 0.000 | 400.000 | mmho/m | 667.135 | -7.256 |
| Medium | 0.005 | 0.712 | V | 0.000 | 464.000 | mmho/m | 655.677 | -3.102 |

Downhole Calibration

| | Readings | | | References | | | Results | |
|--------|----------|--------|--------|------------|----------|--------|---------|-------|
| | Zero | Cal | | Zero | Cal | | m' | b' |
| Deep | 0.000 | 0.000 | mmho/m | 14.508 | 388.384 | mmho/m | 1.000 | 0.000 |
| Medium | 0.000 | 0.000 | mmho/m | 166.367 | 504.400 | mmho/m | 1.000 | 0.000 |
| LL3 | | 7.500 | V | | 1400.000 | Ohm-m | | |
| | | 0.000 | V | | 20.000 | Ohm-m | | |
| | | -7.200 | V | | 4000.000 | mmho-m | | |

After Survey Verification

| | Readings | | | Targets | | | Results | |
|--------|----------|-------|--------|---------|-------|--------|---------|-------|
| | Zero | Cal | | Zero | Cal | | m' | b' |
| Deep | 0.000 | 0.000 | mmho/m | 0.000 | 0.000 | mmho/m | 0.000 | 0.000 |
| Medium | 0.000 | 0.000 | mmho/m | 0.000 | 0.000 | mmho/m | 0.000 | 0.000 |
| LL3 | | 1.000 | Ohm-m | | 1.000 | Ohm-m | | |
| | | 0.000 | Ohm-m | | 0.000 | Ohm-m | | |
| | | 1.000 | mmho-m | | 1.000 | mmho-m | | |

Litho Density Calibration Report
 Serial: 002 Model: PRB

Master Calibration

Performed Mon Aug 21 11:27:42 2017

| | Background | Magnesium | Aluminum | Sandstone | |
|-------------|------------|-------------|----------|---------------------|---------|
| Window 1 | 837.1 | 10632.5 | 2945.1 | 12110.1 | cps |
| Window 2 | 772.0 | 9117.4 | 2570.1 | 10197.3 | cps |
| Window 3 | 631.7 | 4669.0 | 1481.9 | 5042.9 | cps |
| Window 4 | 187.0 | 187.5 | 185.9 | 189.9 | cps |
| Long Space | 0.0 | 8345.4 | 1798.1 | 9425.3 | cps |
| Short Space | 1.1 | 1927.9 | 1285.9 | 2050.2 | cps |
| Rho | | 1.7100 | 2.5960 | 1.3800 | g/cc |
| Pe | | 0.0000 | 2.5700 | 1.5500 | |
| Rib Angle | : 45.2 | Rib Slope | : 1.008 | Density/Spine Ratio | : 0.558 |
| Spine Angle | : 75.2 | Spine Slope | : 3.790 | Spine Intercept | : -19.6 |

Before Survey Verification

Performed Wed Dec 31 18:00:00 1969

| | | | | | |
|---------------------|-----|--------|--------|--------|------|
| Window 1 | 0.0 | 0.0 | 0.0 | 0.0 | cps |
| Window 2 | 0.0 | 0.0 | 0.0 | 0.0 | cps |
| Window 3 | 0.0 | 0.0 | 0.0 | 0.0 | cps |
| Window 4 | 0.0 | 0.0 | 0.0 | 0.0 | cps |
| Long Space | 0.0 | 0.0 | 0.0 | 0.0 | cps |
| Short Space | 0.0 | 0.0 | 0.0 | 0.0 | cps |
| Measured Rho | | 0.0000 | 0.0000 | 0.0000 | g/cc |
| Measured Correction | | 0.0000 | 0.0000 | 0.0000 | g/cc |
| Measured Pe | | | 0.0000 | 0.0000 | |

After Survey Verification

Performed Wed Dec 31 18:00:00 1969

| | | | | | |
|---------------------|-----|--------|--------|--------|------|
| Window 1 | 0.0 | 0.0 | 0.0 | 0.0 | cps |
| Window 2 | 0.0 | 0.0 | 0.0 | 0.0 | cps |
| Window 3 | 0.0 | 0.0 | 0.0 | 0.0 | cps |
| Window 4 | 0.0 | 0.0 | 0.0 | 0.0 | cps |
| Long Space | 0.0 | 0.0 | 0.0 | 0.0 | cps |
| Short Space | 0.0 | 0.0 | 0.0 | 0.0 | cps |
| Measured Rho | | 0.0000 | 0.0000 | 0.0000 | g/cc |
| Measured Correction | | 0.0000 | 0.0000 | 0.0000 | g/cc |
| Measured Pe | | | 0.0000 | 0.0000 | |

Compensated Neutron Calibration Report

Serial Number: 070808
Tool Model: Probe

PRE-SURVEY VERIFICATION

| Detector | Readings | Measured | Target |
|-------------|----------|----------|--------|
| Short Space | cps | | |
| Long Space | cps | pu | pu |

POST-SURVEY VERIFICATION

| Detector | Readings | Measured | Target |
|-------------|----------|----------|--------|
| Short Space | cps | | |
| Long Space | cps | pu | pu |

Gamma Ray Calibration Report

Serial Number: 070558
Tool Model: OPEN_GR
Performed: Wed May 31 00:09:32 2017

Calibrator Value: 1.0 GAPI

Background Reading: 0.0 cps
Calibrator Reading: 1.0 cps

Sensitivity: 0.2800 GAPI/cps