



COMPOSITE LOG

Company **LAWCO HOLDINGS, LLC.**
 Well **RADCLIFF # 5-5**
 Field **COUNTRYMAN**
 County **COWLEY** State **KANSAS**

Location: **API #: 15-035-24696-0000**
N/2 SE SE SE
600' FSL & 330' FEL
SEC 5 TWP 33S RGE 7E

Permanent Datum	GL	Elevation	1306'
Log Measured From	GL		
Drilling Measured From	GL		

Other Services
 DIL, MEL
 SONIC
 Elevation
 K.B. ---
 D.F. ---
 G.L. 1306'

Date	9-24-2018
Run Number	ONE
Depth Driller	3302'
Depth Logger	3302'
Bottom Logged Interval	3300'
Top Log Interval	SURFACE
Casing Driller	8 5/8" @ 317'
Casing Logger	8 5/8" @ 317'
Bit Size	7 7/8"
Type Fluid in Hole	CHEMICAL
Density / Viscosity	9.1 / 70
pH / Fluid Loss	9.5 / 8.4
Source of Sample	FLOWLINE
Rm @ Meas. Temp	2.38 @ 75
Rmt @ Meas. Temp	2.81 @ 75
Rmc @ Meas. Temp	2.01 @ 75
Source of Rmf / Rmc	CAL
Rm @ BHT	1.50 @ 107
Time Circulation Stopped	
Time Logger on Bottom	7:15 AM
Maximum Recorded Temperature	9:30 AM
Equipment Number	107
Location	OW2
Recorded By	HOMINY, OK
Witnessed By	W. LOWERY
	MR. MACKAY

<<< Fold Here >>>

All interpretations are opinions based on inferences from electrical or other measurements and we cannot and do not guarantee the accuracy or correctness of any interpretation, and we shall not, except in the case of gross or willful negligence on our part, be liable or responsible for any loss, costs, damages, or expenses incurred or sustained by anyone resulting from any interpretation made by any of our officers, agents or employees. These interpretations are also subject to our general terms and conditions set out in our current Price Schedule.

Comments

OW2-9146
MATRIX LIMESTONE 2.71 G/CC
ABHV COMPUTED WITH 5 1/2" CASING

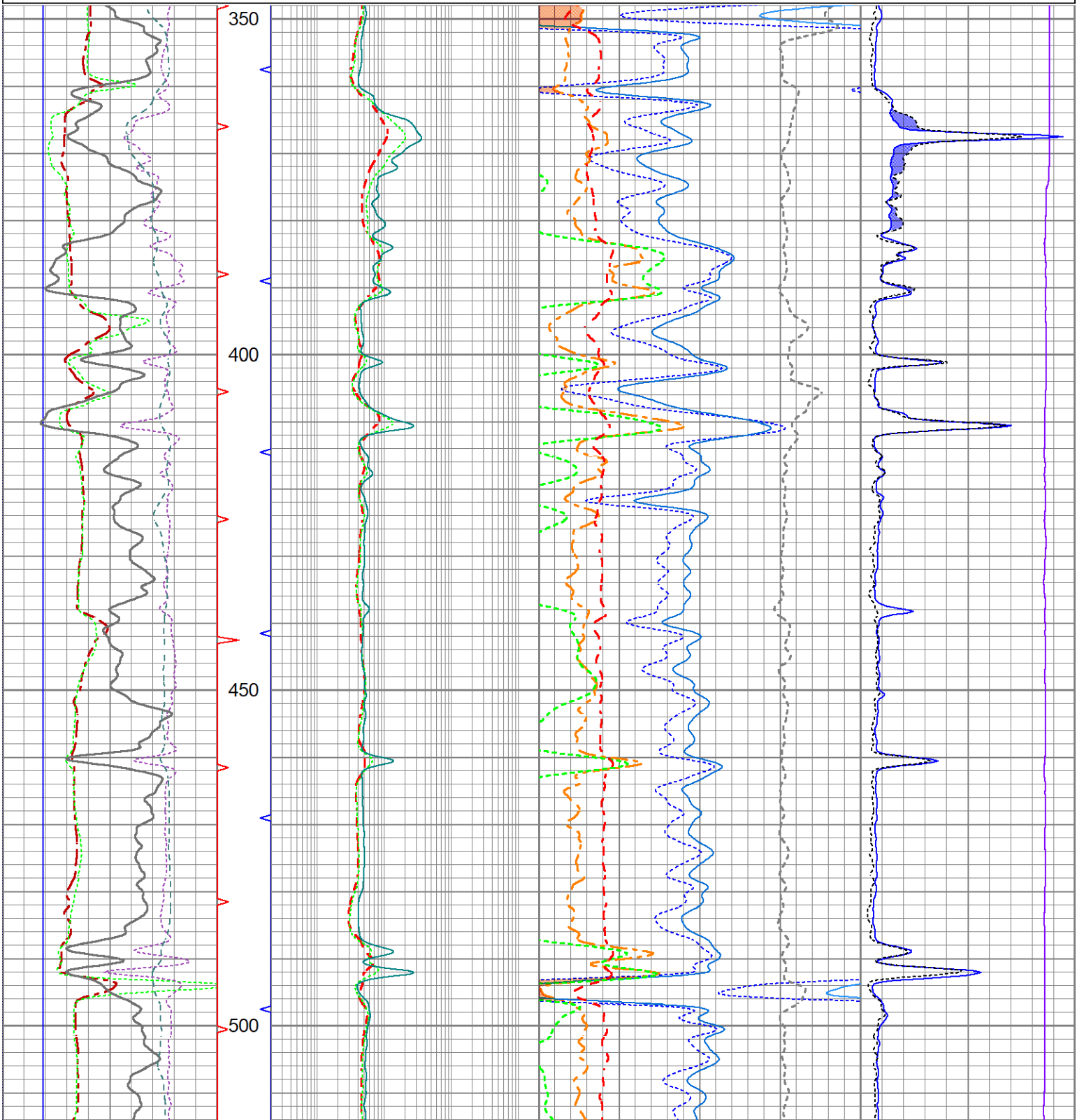
CREW : C. SHAMBLES

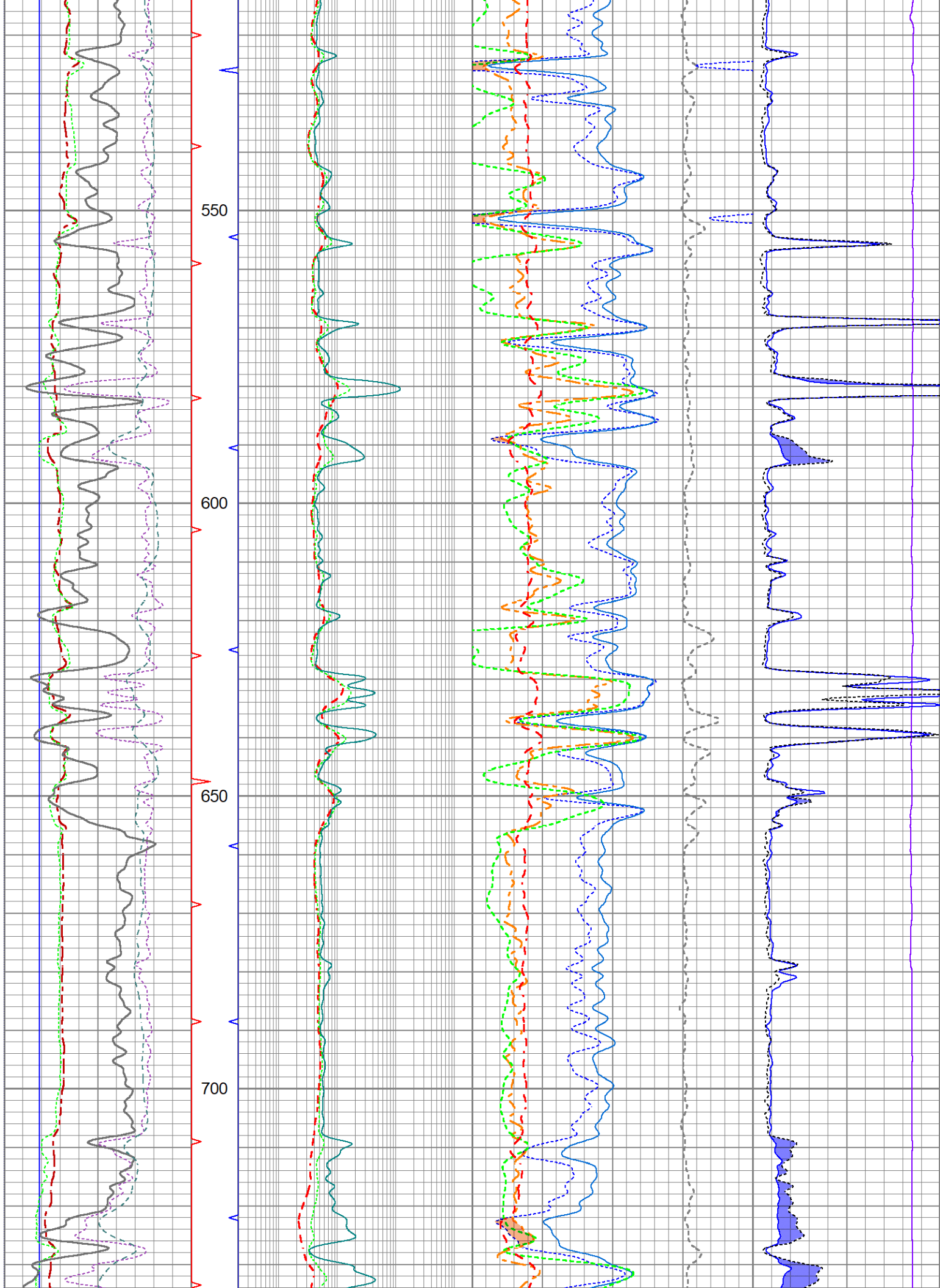


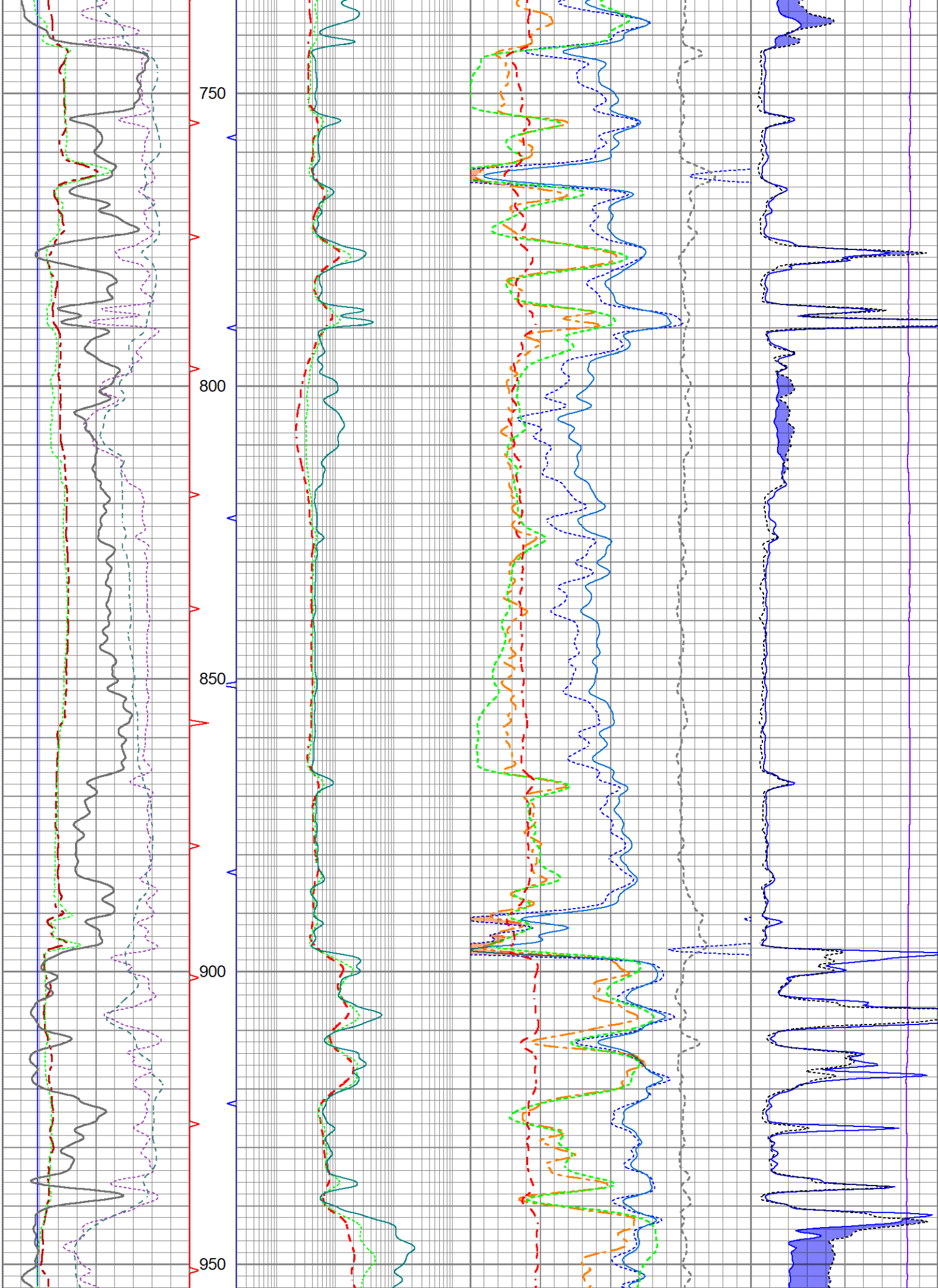
Quick Look Presentation

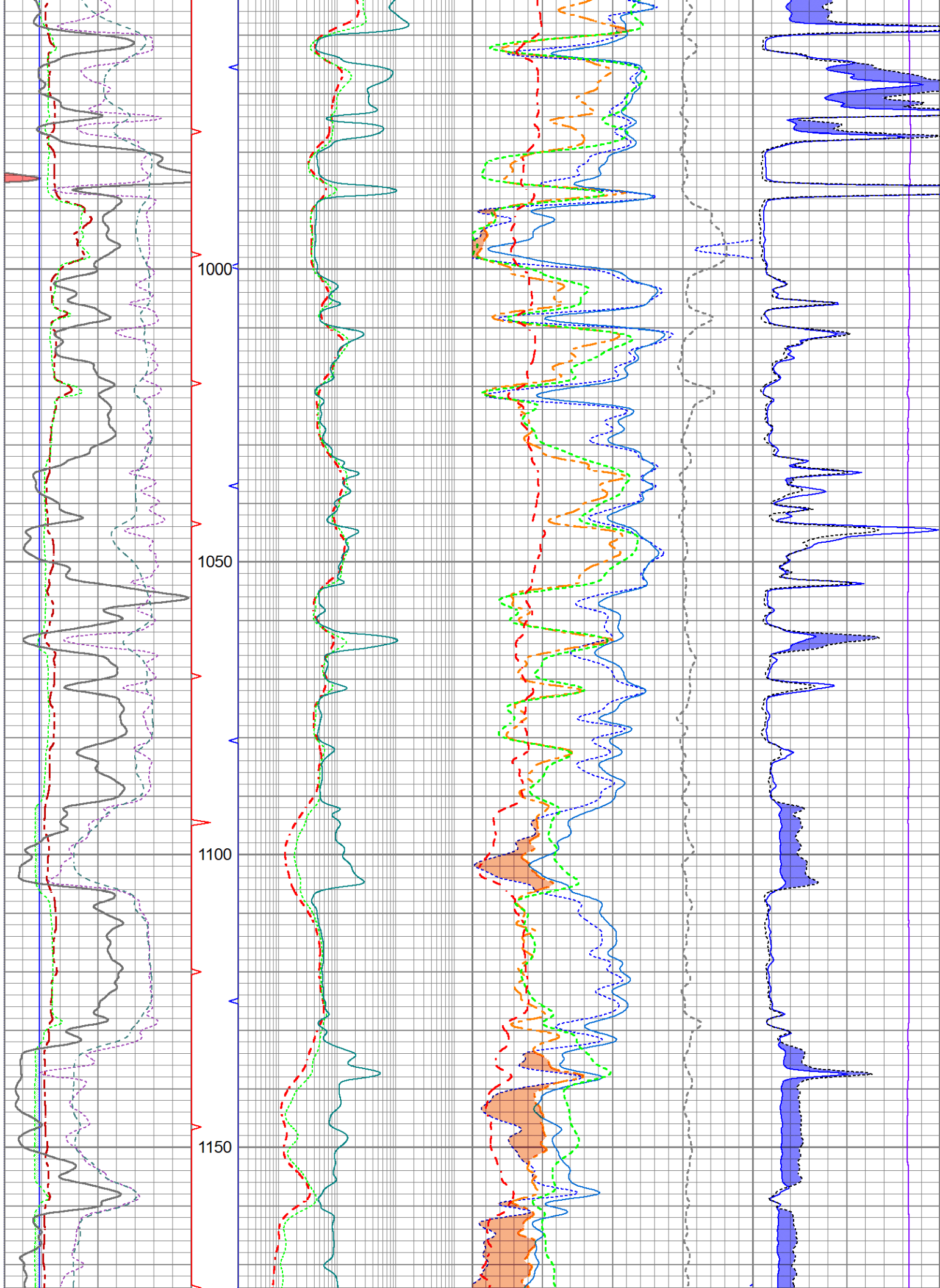
Database File ow2-9146 lawco.db
 Dataset Pathname LDTDILM/merge4
 Presentation Format lawcomp
 Dataset Creation Mon Sep 24 14:19:00 2018
 Charted by Depth in Feet scaled 1:240

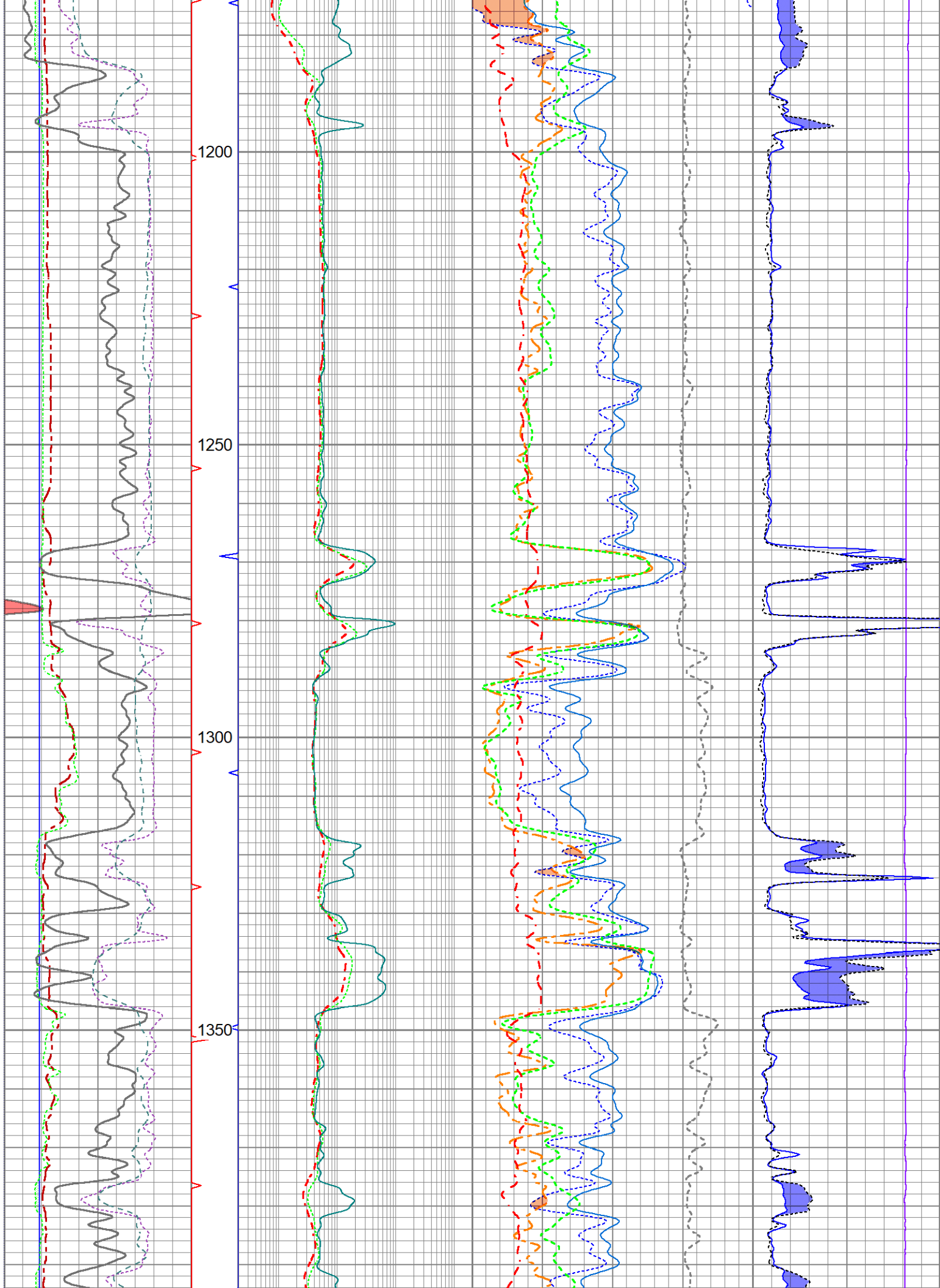
6	Bit Size (in)	16	TBHV	0.2	Resistivity (Ohm-m)	2000	30	Density Porosity (pu)	-10	500	Line Tension (lb)	0	
6	Density Caliper (in)	16		0.2	Medium (Ohm-m)	2000	30	Neutron Porosity (pu)	-10		Micro Inverse		
6	Micro Caliper (in)	16	ABHV	0.2	Lateral Log (Ohm-m)	2000	2	Bulk Density (g/cc)	3	0	(Ohm-m)	40	
-160	Rxo\Rt	40					45	Sonic Porosity (pu)	-15		Micro Normal		
	Gamma Ray						0	Pe	10	Correction	0	(Ohm-m)	40
0	(GAPI)	150											
0	SP (mV)	200											

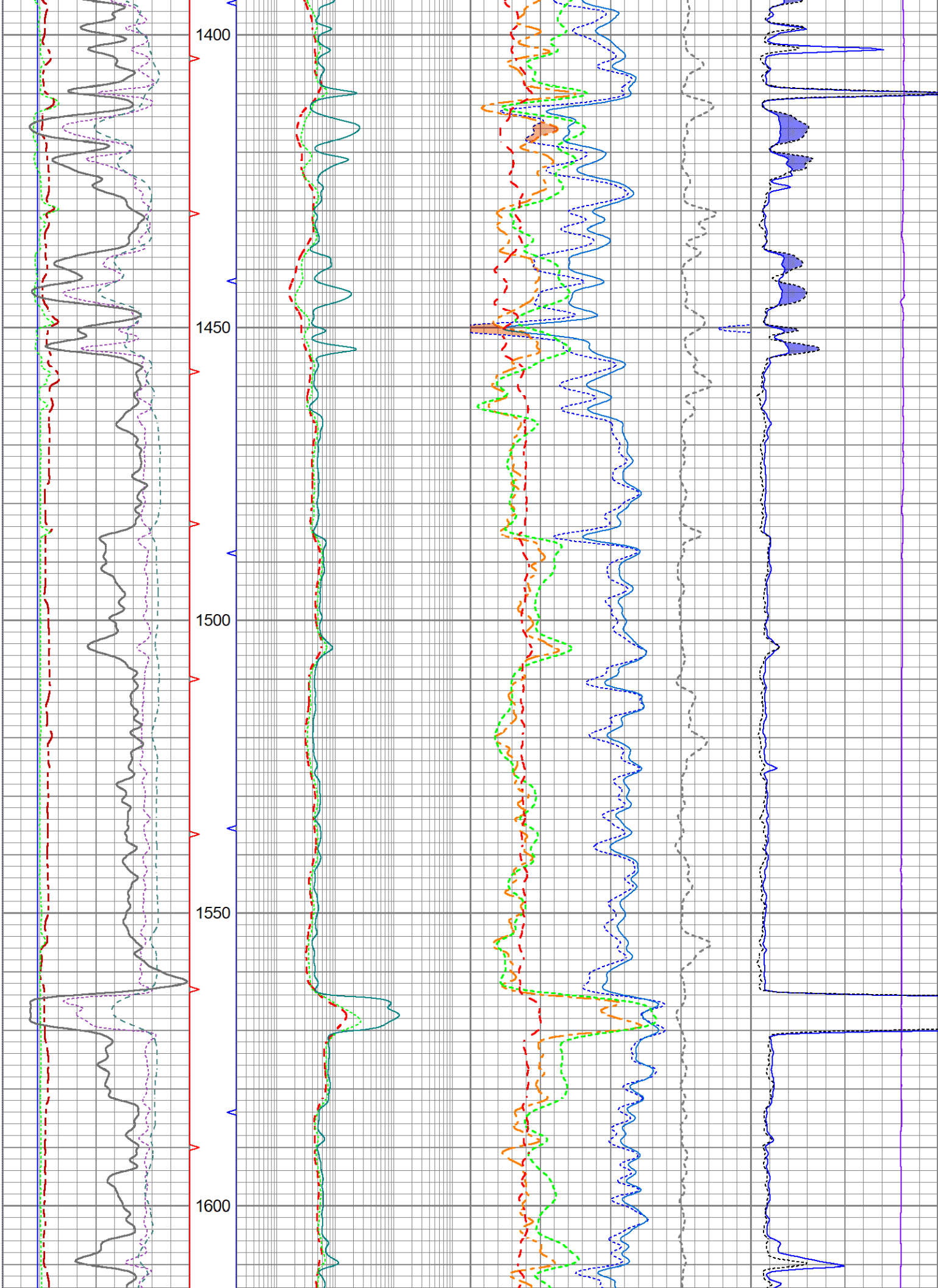


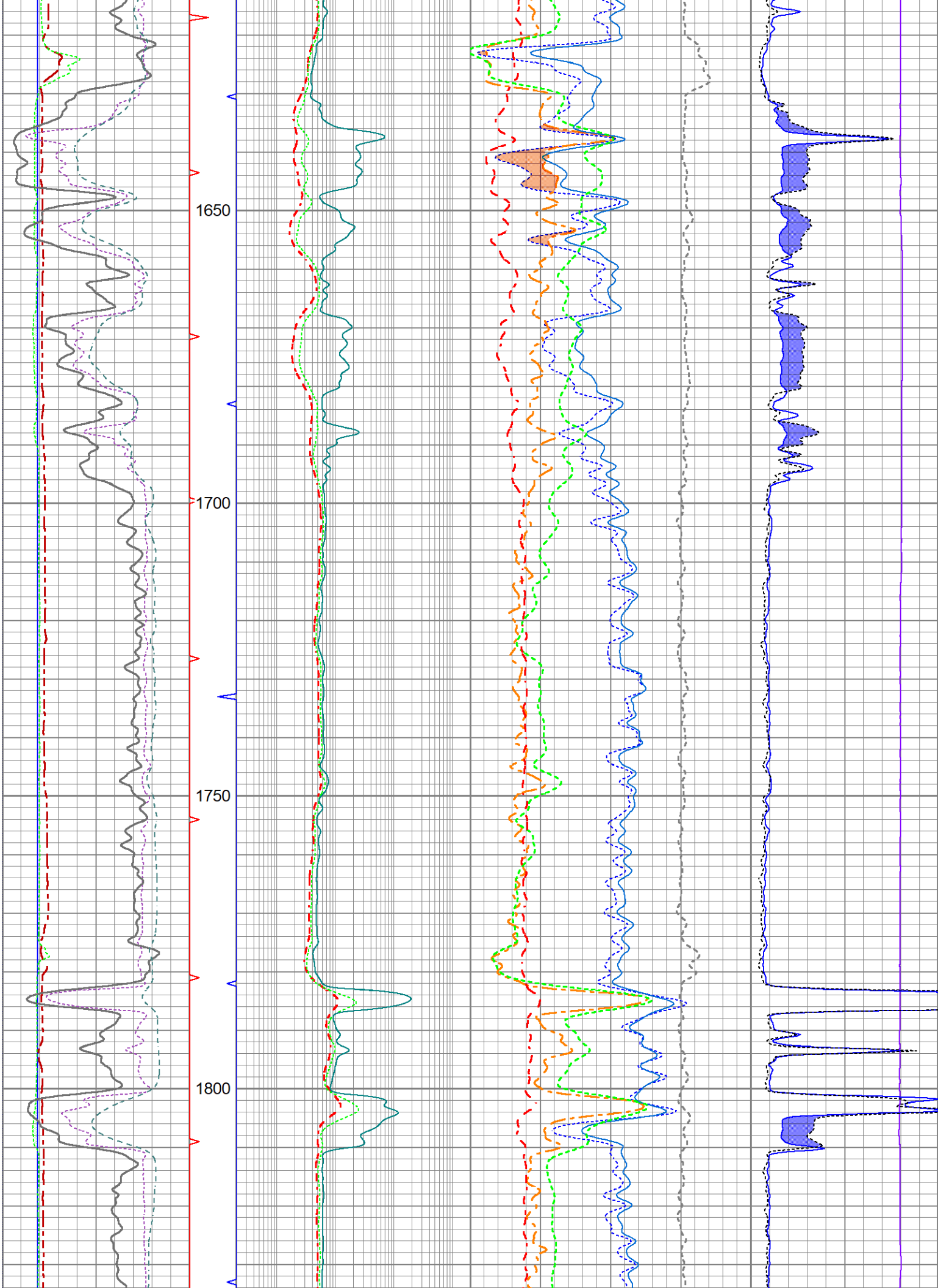


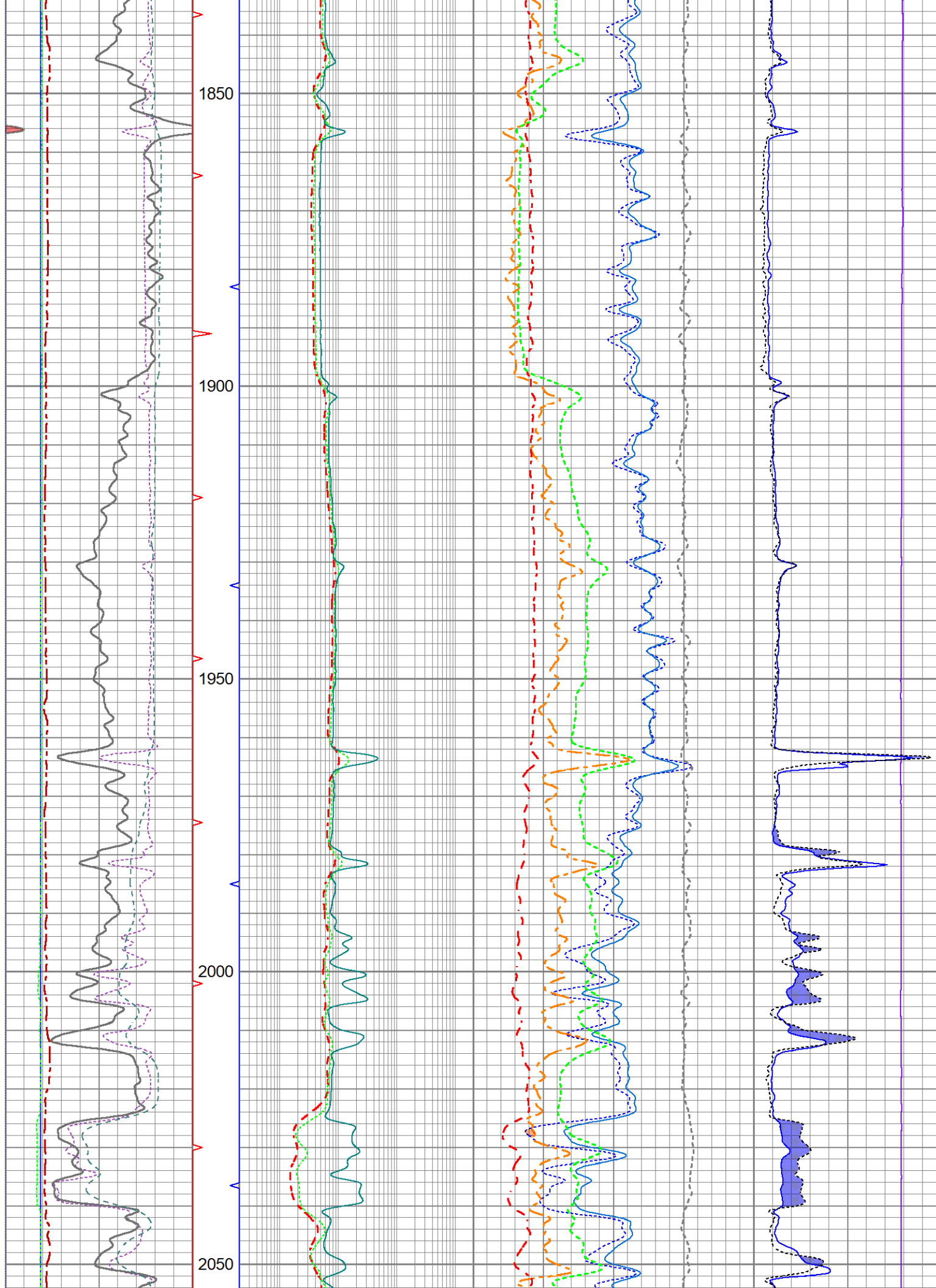


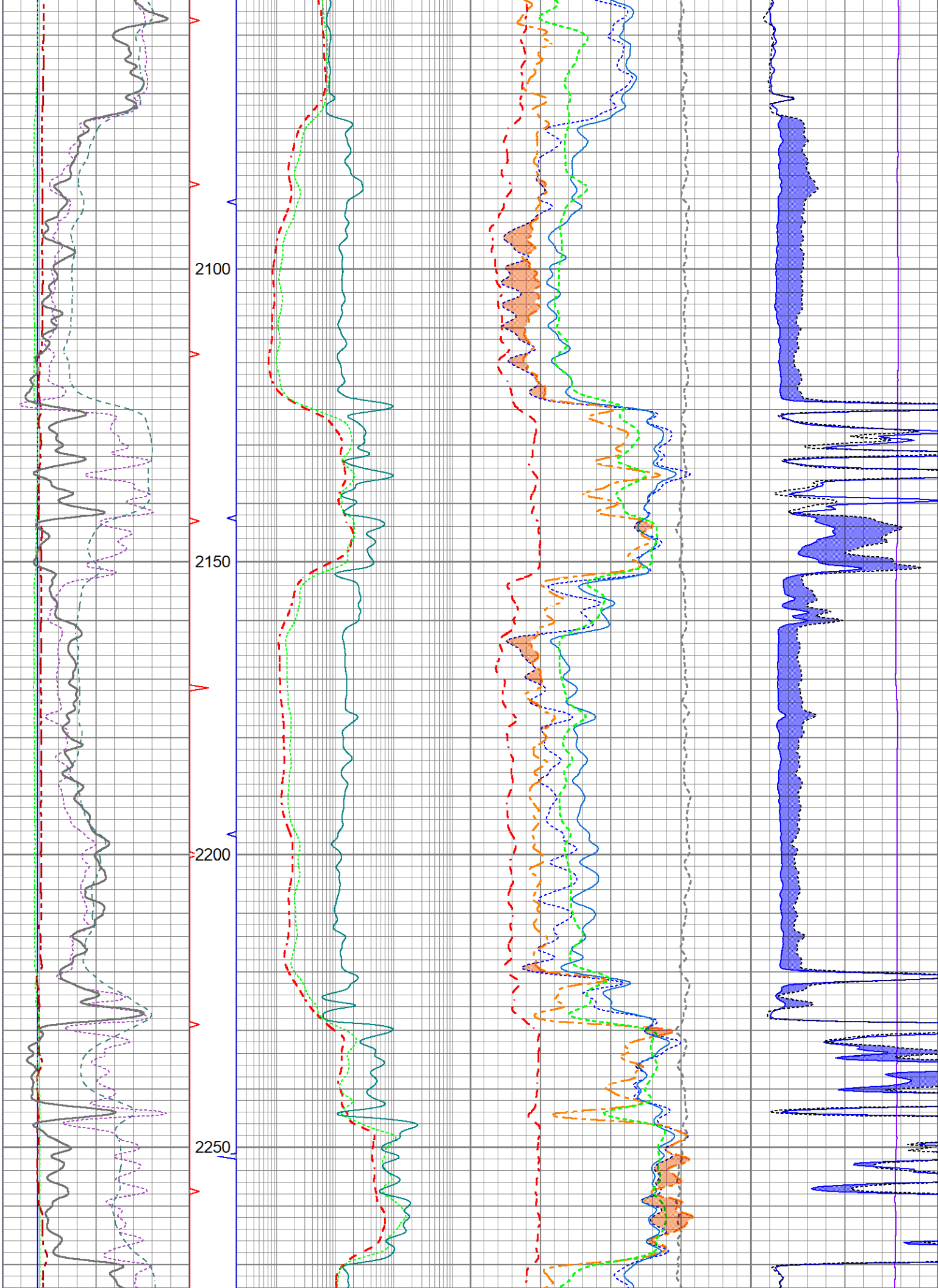


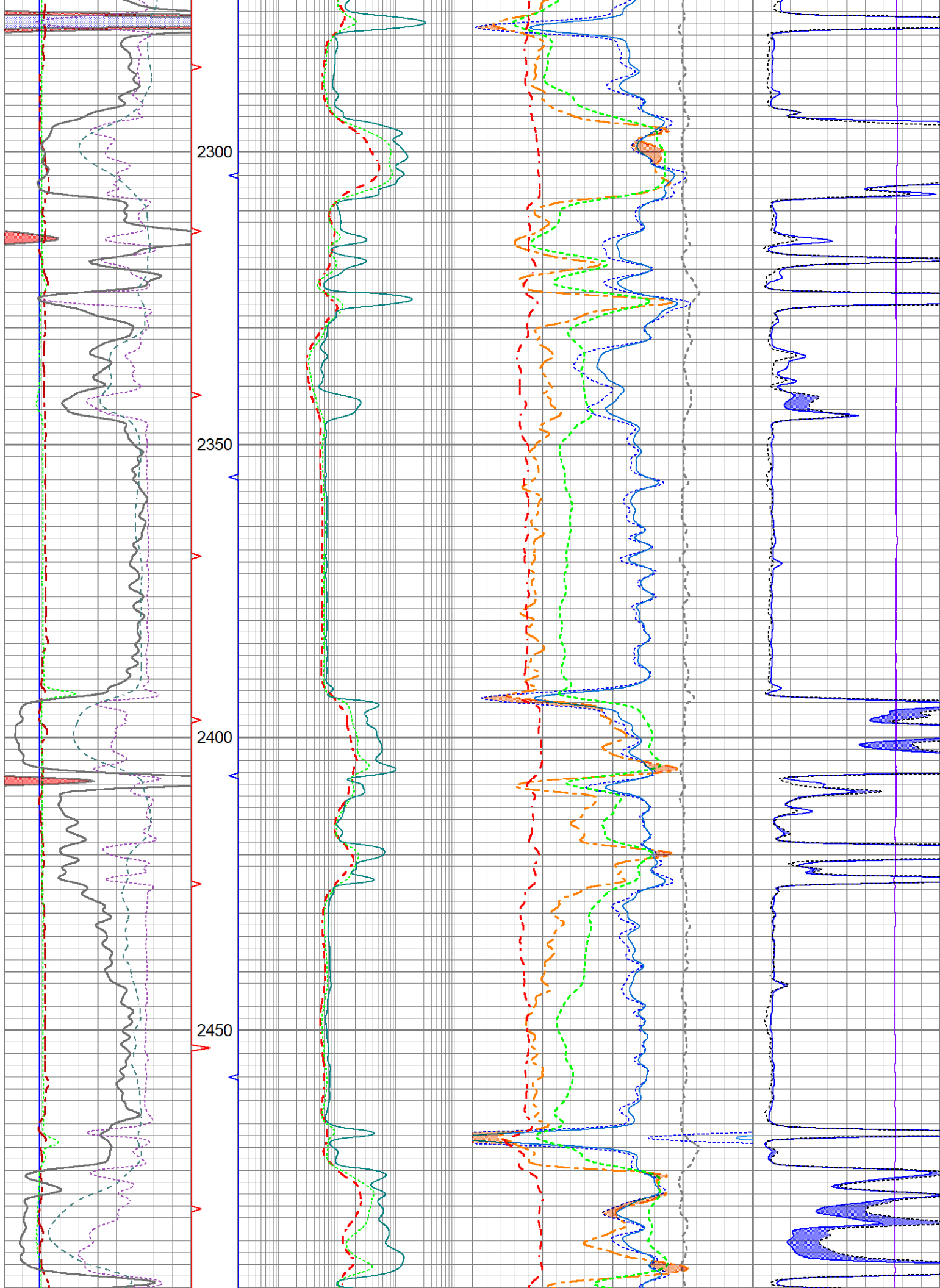


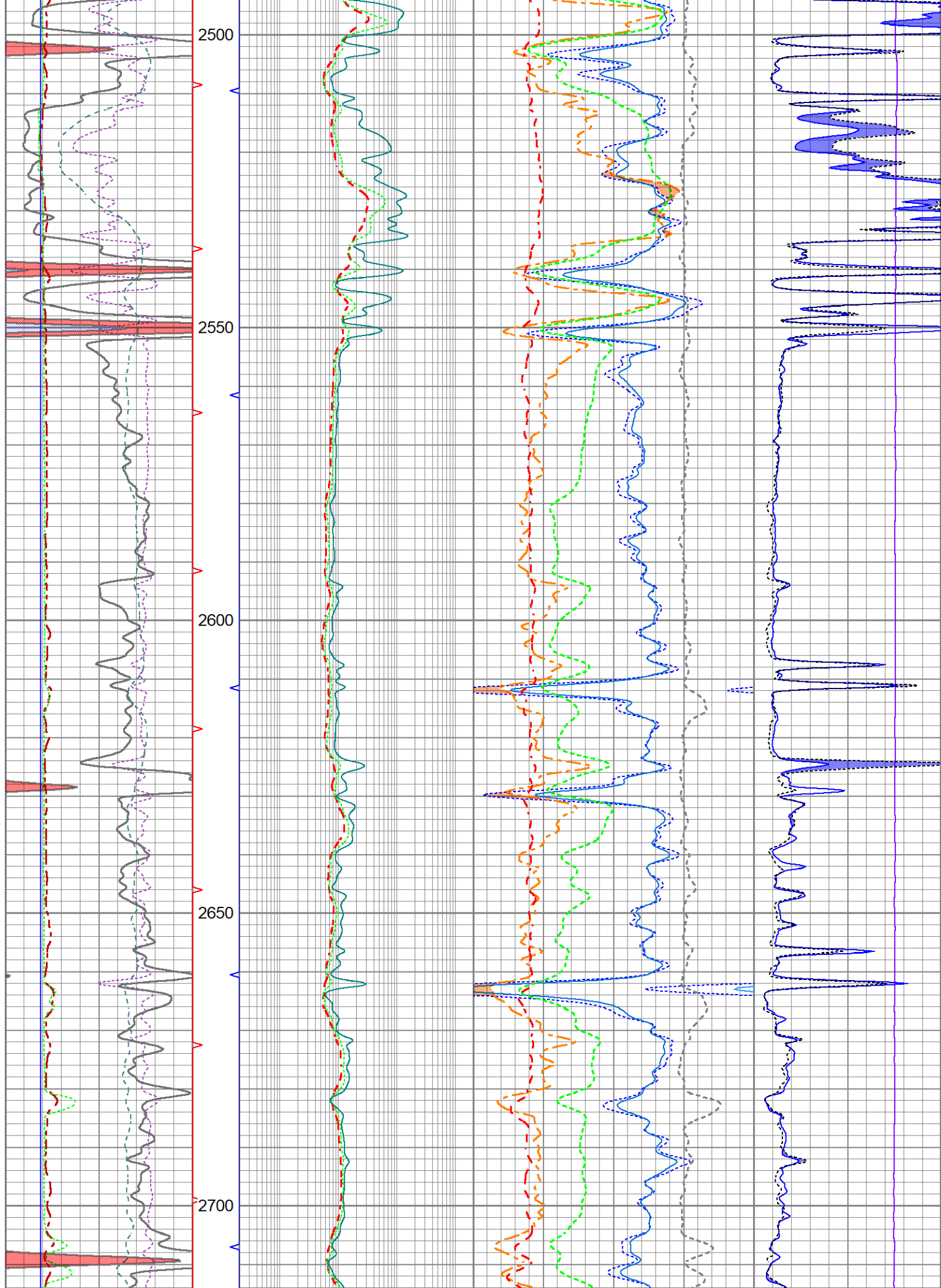


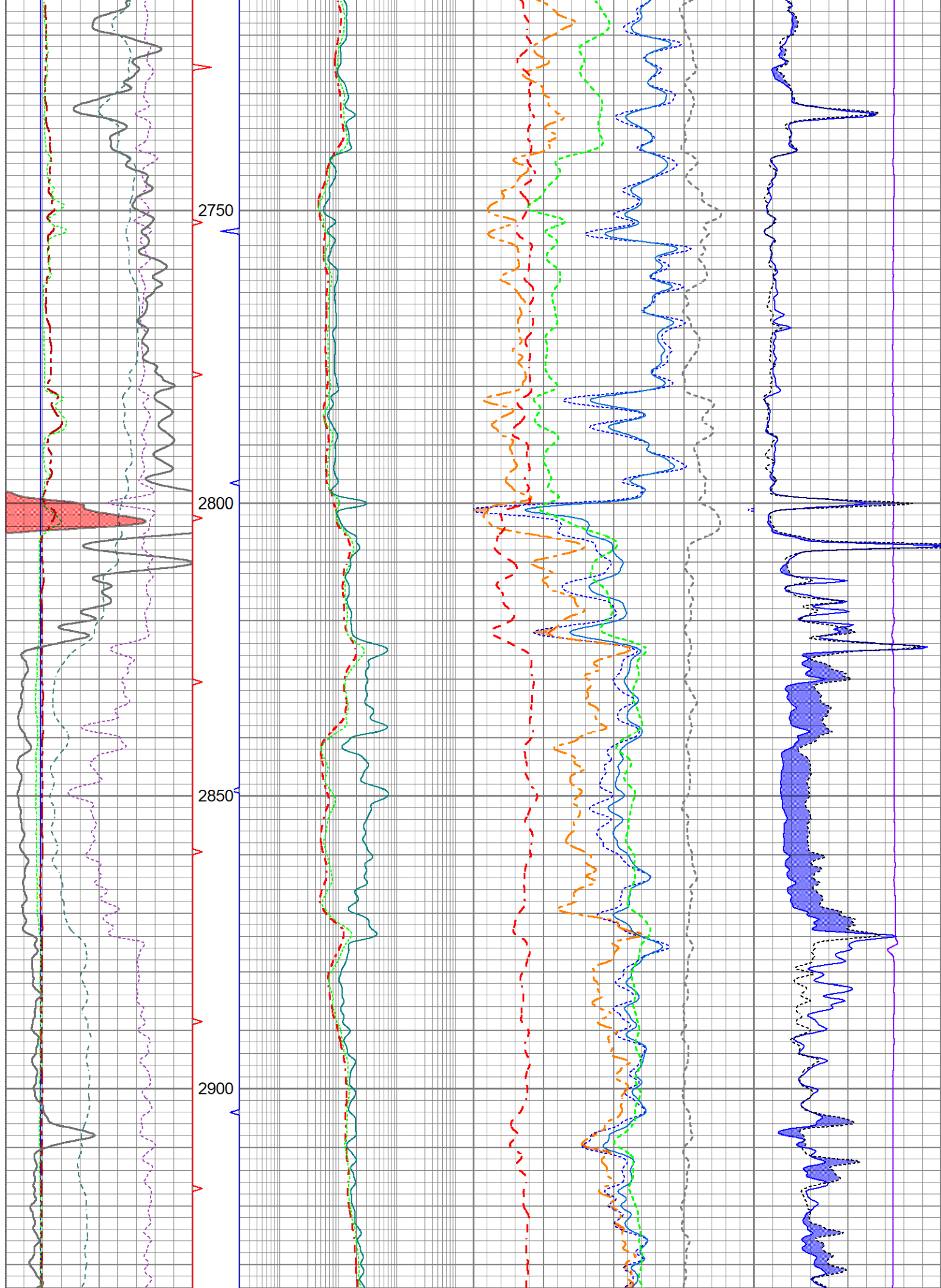


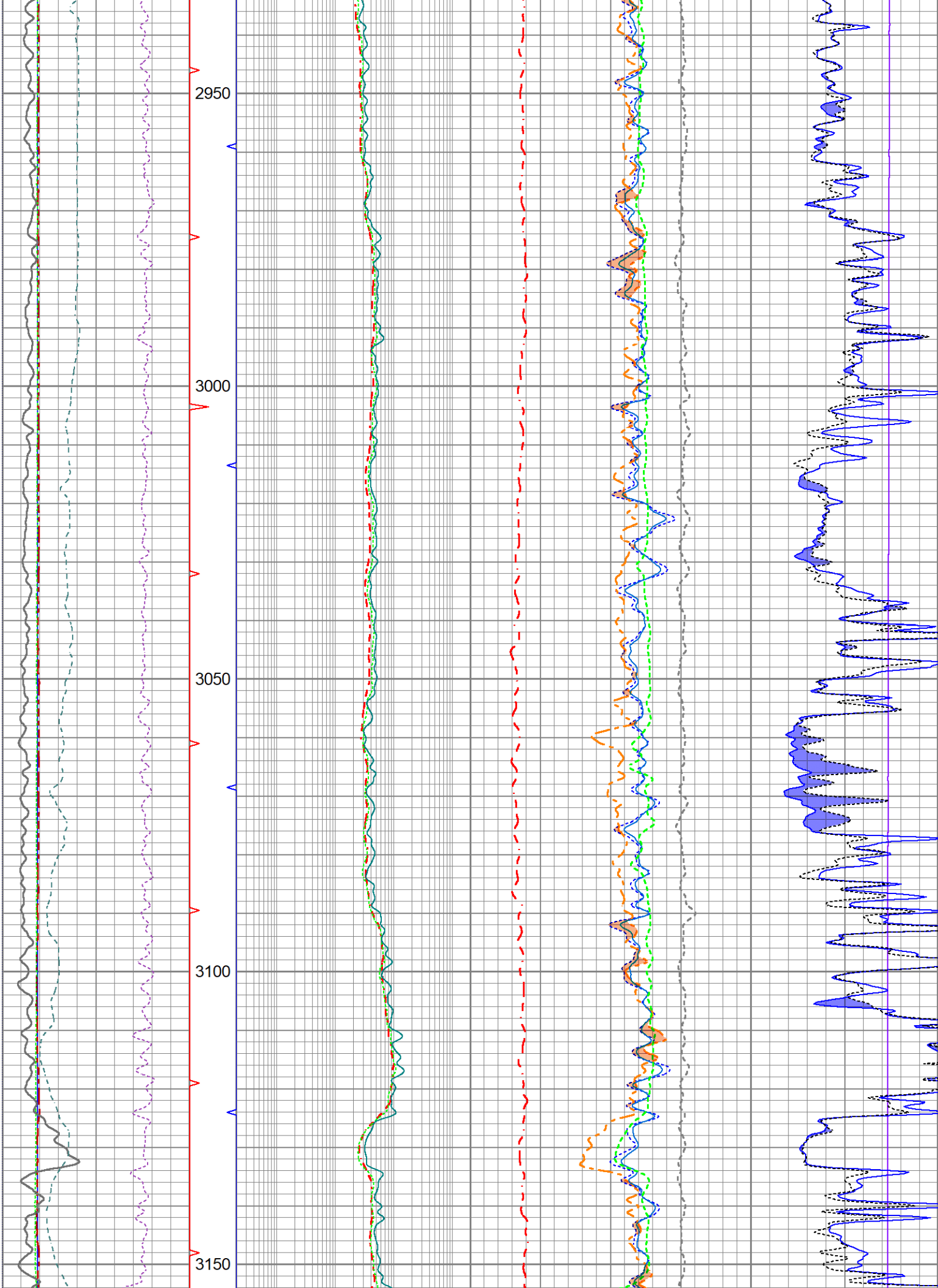


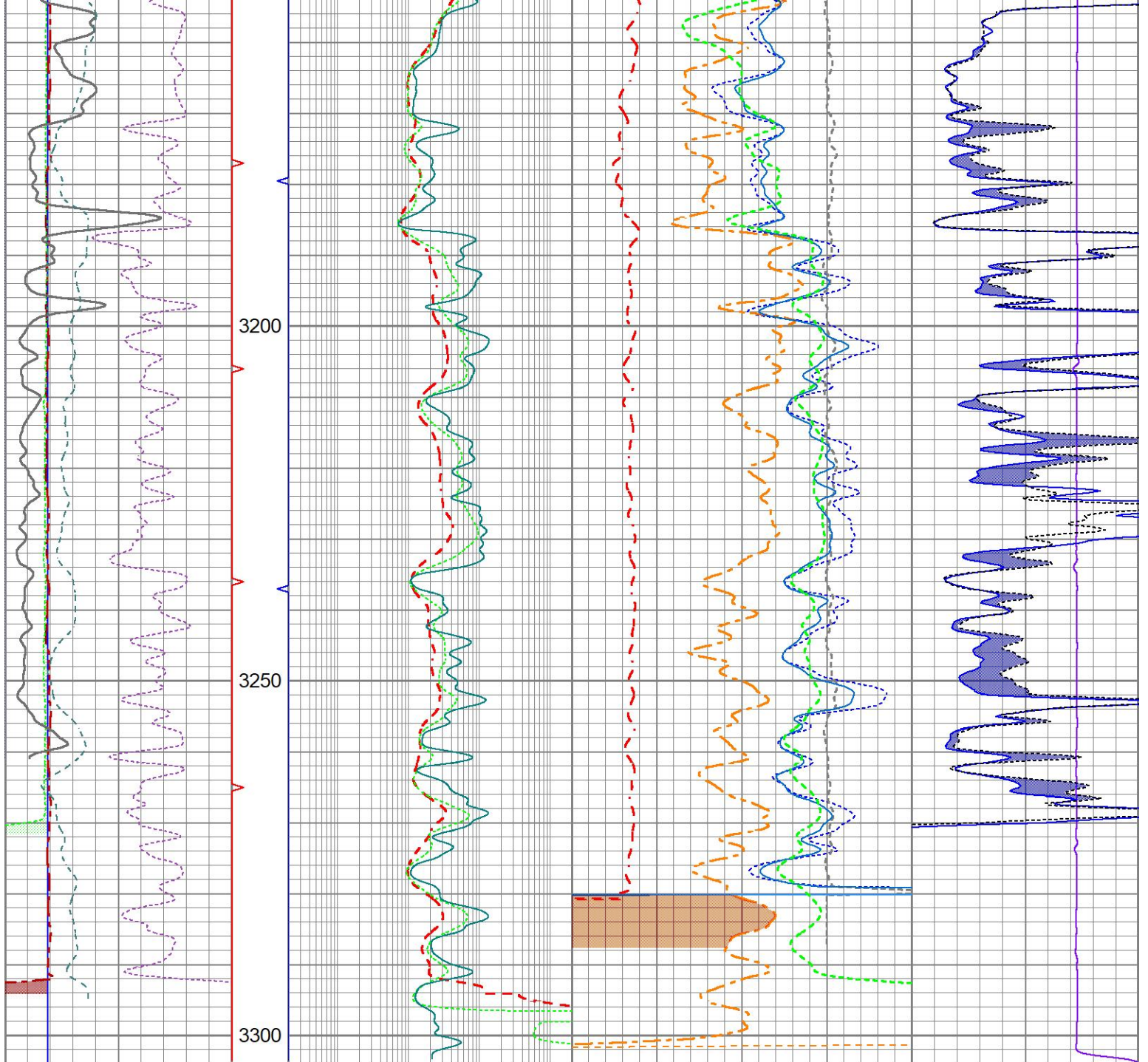












6	Bit Size (in)	16	TBHV	0.2	Resistivity (Ohm-m)	2000	30	Density Porosity (pu)	-10	500	Line Tension (lb)	0
6	Density Caliper (in)	16		0.2	Medium (Ohm-m)	2000	30	Neutron Porosity (pu)	-10		Micro Inverse	
6	Micro Caliper (in)	16	ABHV	0.2	Lateral Log (Ohm-m)	2000	2	Bulk Density (g/cc)	3	0	(Ohm-m)	40
-160	Rxo\Rt	40					45	Sonic Porosity (pu)	-15		Micro Normal	
	Gamma Ray						0	Pe	10	Correction	(Ohm-m)	40
0	(GAPI)	150							-0.5	(g/cc)	0.5	
0	SP (mV)	200										

Sensor	Offset (ft)	Schematic	Description	Length (ft)	O.D. (in)	Weight (lb)
GRTemp	40.66		GR-PTS_OH (FW1306-49) Open Hole Digital Gamma Ray	3.69	3.38	40.00
GR	39.74					

				MEL-GOI (TEL) Digital Telemetry Microlog	7.21	3.50	150.00
MCAL	32.82						
MI	32.82						
MN	32.70						
LD_HEAD_V	30.36						
IntTemp	29.36						
				LDT-V4A (Osage_1_upgrade)	9.83	4.00	300.00
DCAL	23.78						
LS_ACC	23.28						
LCSBIN	23.28						
LSDAC	23.28						
W9	23.28						
W4	23.28						
W3	23.28						
W2	23.28						
W1	23.28						
SS_ACC	23.03						
SCSBIN	23.03						
SSDAC	23.03						
W10	23.03						
W8	23.03						
W7	23.03						
W6	23.03						
W5	23.03			DIL-GEAR (158) Dual Induction Electrical Log	21.36	4.00	395.00
CILD	10.92						
SP	10.42						
CILM	7.00						
RLL3	1.65						

Dataset: ow2-9146 lawco.db: field/well/LDTDILM/pass1
 Total length: 42.09 ft
 Total weight: 885.00 lb
 O.D.: 4.00 in