



**DUAL
INDUCTION
LOG**

Company American Oil LLC.
Well PCR #1-23
Field Lorraine
County Ellsworth
State Kansas

Company American Oil LLC.
Well PCR #1-23
Field Lorraine
County Ellsworth State Kansas

Location: 1138' FSL & 857' FWL
API #: 15 053 21366
SEC 23 TWP 17S RGE 9W
Permanent Datum Ground Level Elevation 1774'
Log Measured From KB 8' AGL
Drilling Measured From KB
Other Services
CDNL
ML
Elevation
K.B. 1782'
D.F. 1781'
G.L. 1774'

Date	9-18-18
Run Number	One
Depth Driller	3290'
Depth Logger	3292'
Bottom Logged Interval	3290'
Top Log Interval	460'
Casing Driller	8 5/8" @ 473'
Casing Logger	473'
Bit Size	7 7/8"
Type Fluid in Hole	Chemical Mud
Density / Viscosity	8.9/50
PH / Fluid Loss	10.0/7.2
Source of Sample	Pit
Rm @ Meas. Temp	1.3 @ 82 degf
Rmf @ Meas. Temp	0.98 @ 82 degf
Rmc @ Meas. Temp	1.56 @ 82 degf
Source of Rmf / Rmc	Calculated
Rm @ BHT	0.99 @ 108 degf
Time Circulation Stopped	4:30 a.m
Time Logger on Bottom	9:00 a.m
Maximum Recorded Temperature	108 degf
Equipment Number	T-127
Location	Hays, KS.
Recorded By	C. Patterson
Witnessed By	Mr. Austin Klaus

<<< Fold Here >>>

All interpretations are opinions based on inferences from electrical or other measurements and we cannot and do not guarantee the accuracy or correctness of any interpretation, and we shall not, except in the case of gross or willful negligence on our part, be liable or responsible for any loss, costs, damages, or expenses incurred or sustained by anyone resulting from any interpretation made by any of our officers, agents or employees. These interpretations are also subject to our general terms and conditions set out in our current Price Schedule.

Comments

East Of Bushton,KS on Hwy 4 to 11th Rd., Then North 2.7 mi. on 11th Rd.,
East into Location
(or 10th Rd North 2mi. to Ave. W then East 1 mi to 11th Rd., North 1/4 mi East Into)
Thanks for using Gemini Wireline LLC
785-625-1182



MAIN PASS

Database File aopcr#1-23oh.db
Dataset Pathname pass2.1
Presentation Format kdi11inn
Dataset Creation Tue Sep 18 10:33:26 2018
Charted by Depth in Feet scaled 1:600

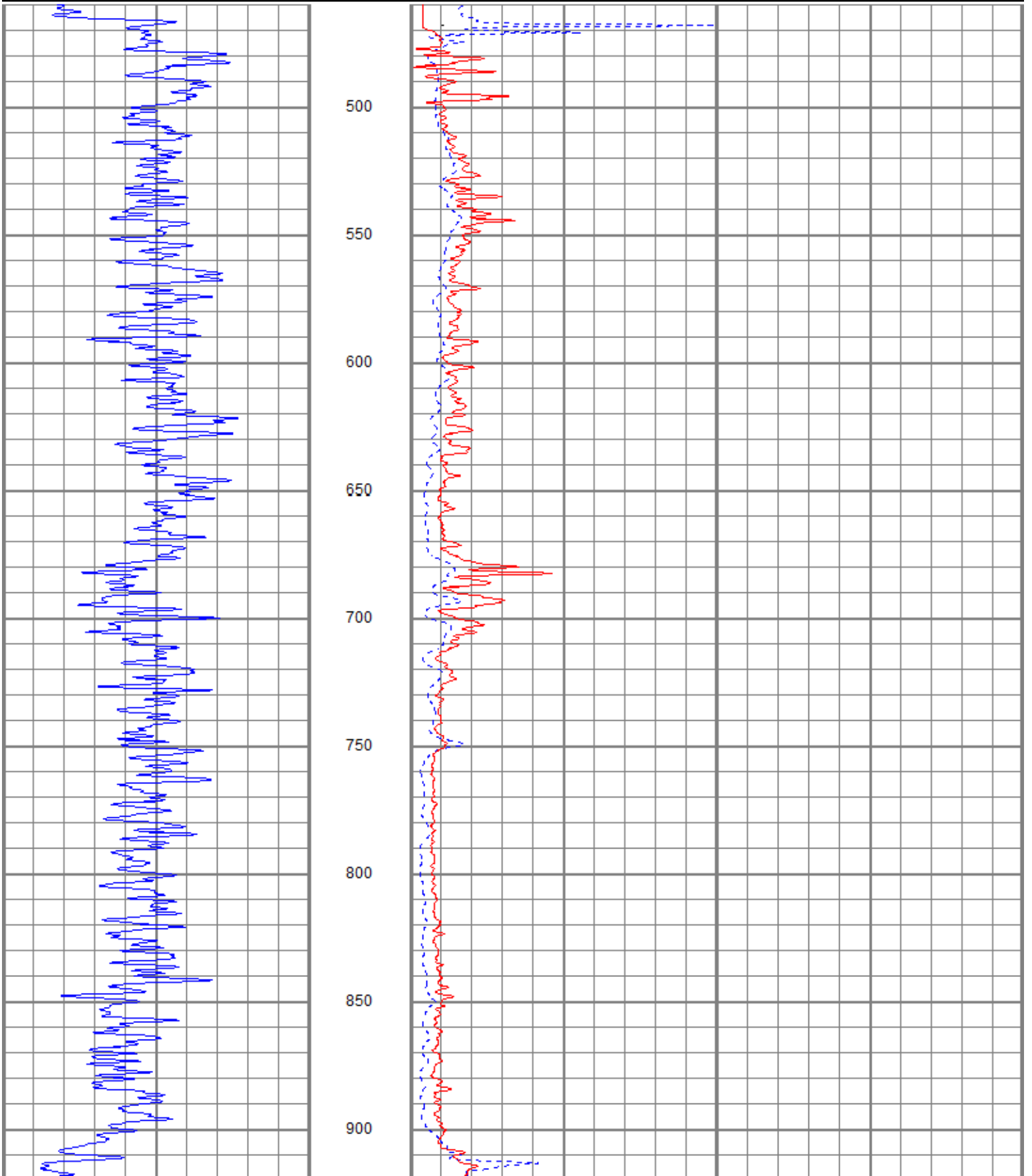
0 GR (GAPI) 150

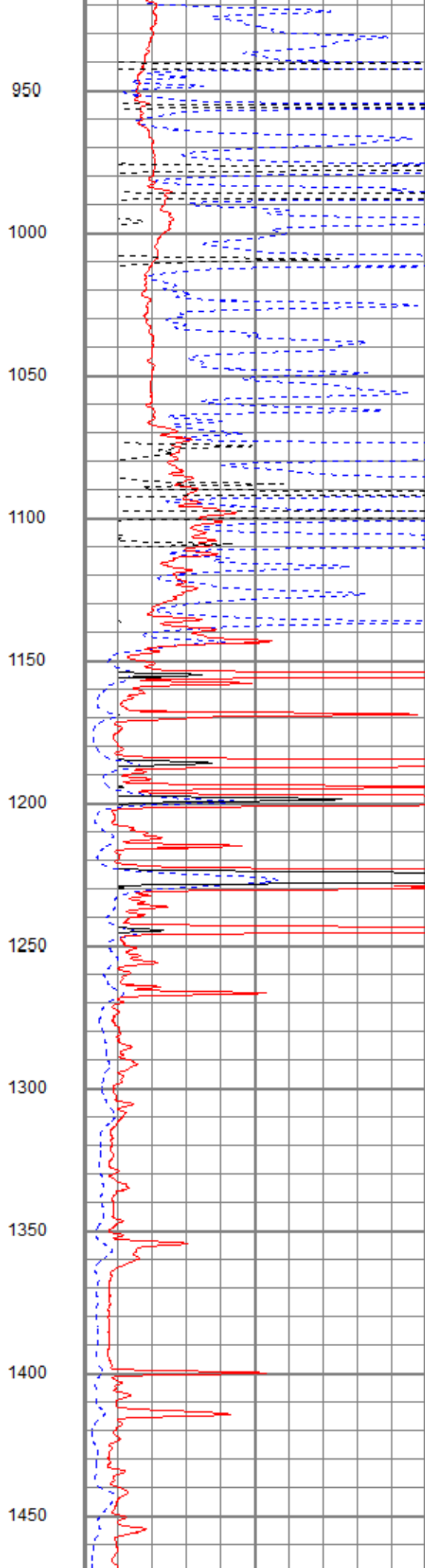
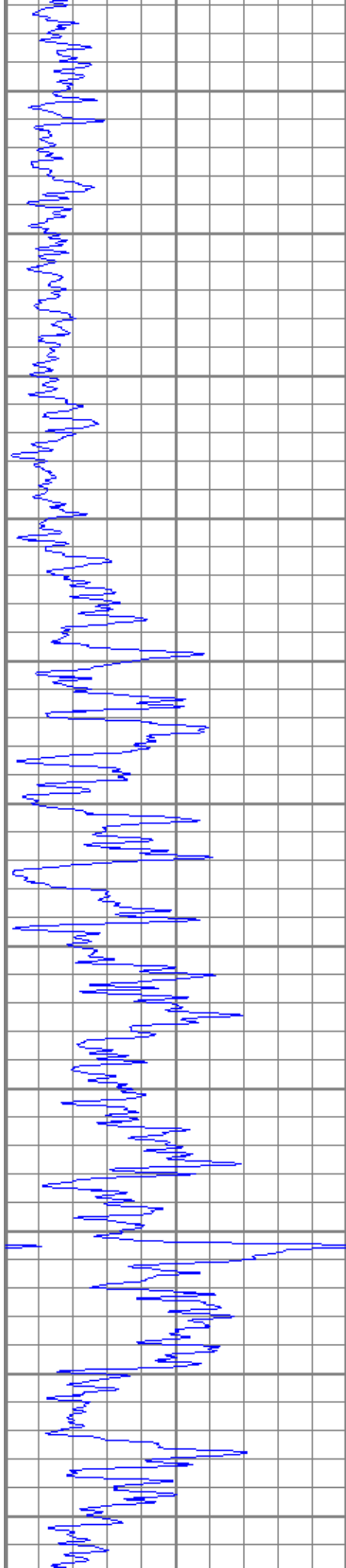
0 RILD (Ohm-m) 50

0 RLL3 (Ohm-m) 50

50 RILD x 10 (Ohm-m) 500

50 RLL3 x 10 (Ohm-m) 500





950

1000

1050

1100

1150

1200

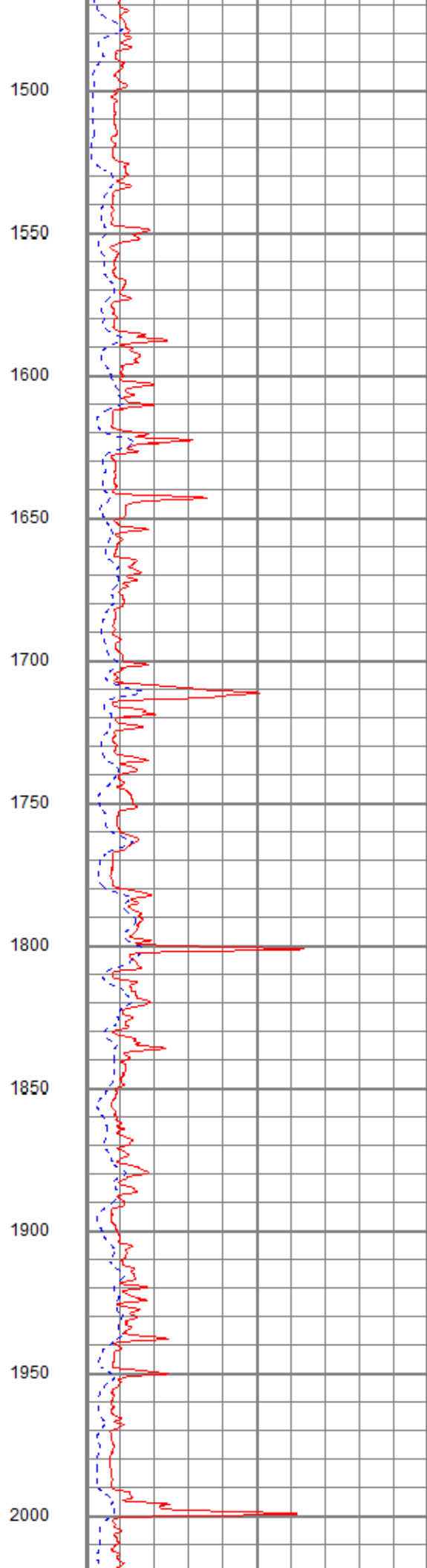
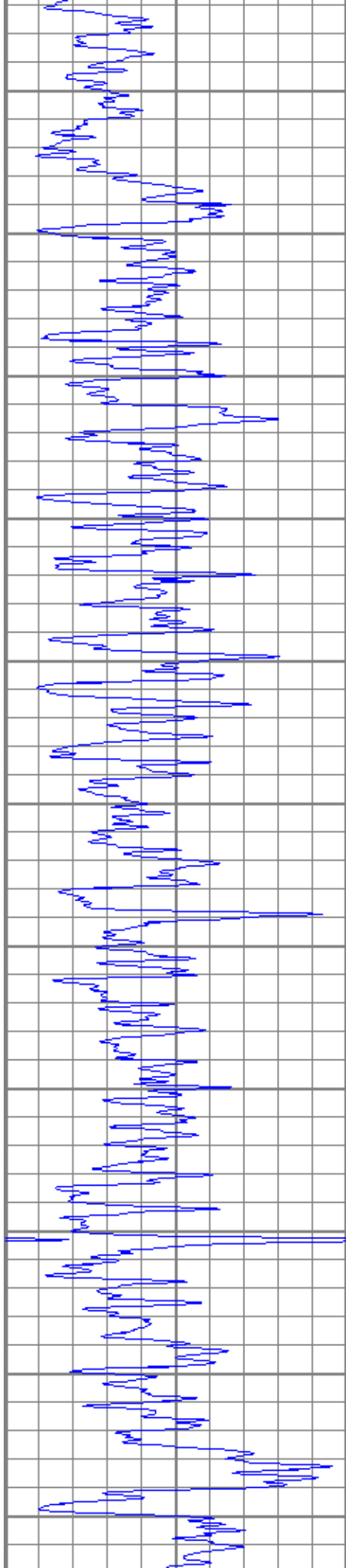
1250

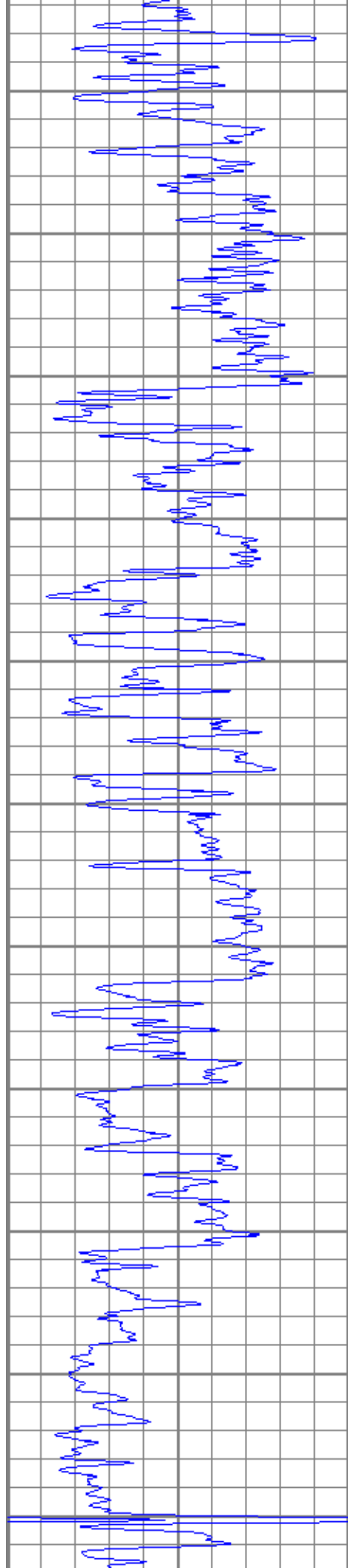
1300

1350

1400

1450





2050

2100

2150

2200

2250

2300

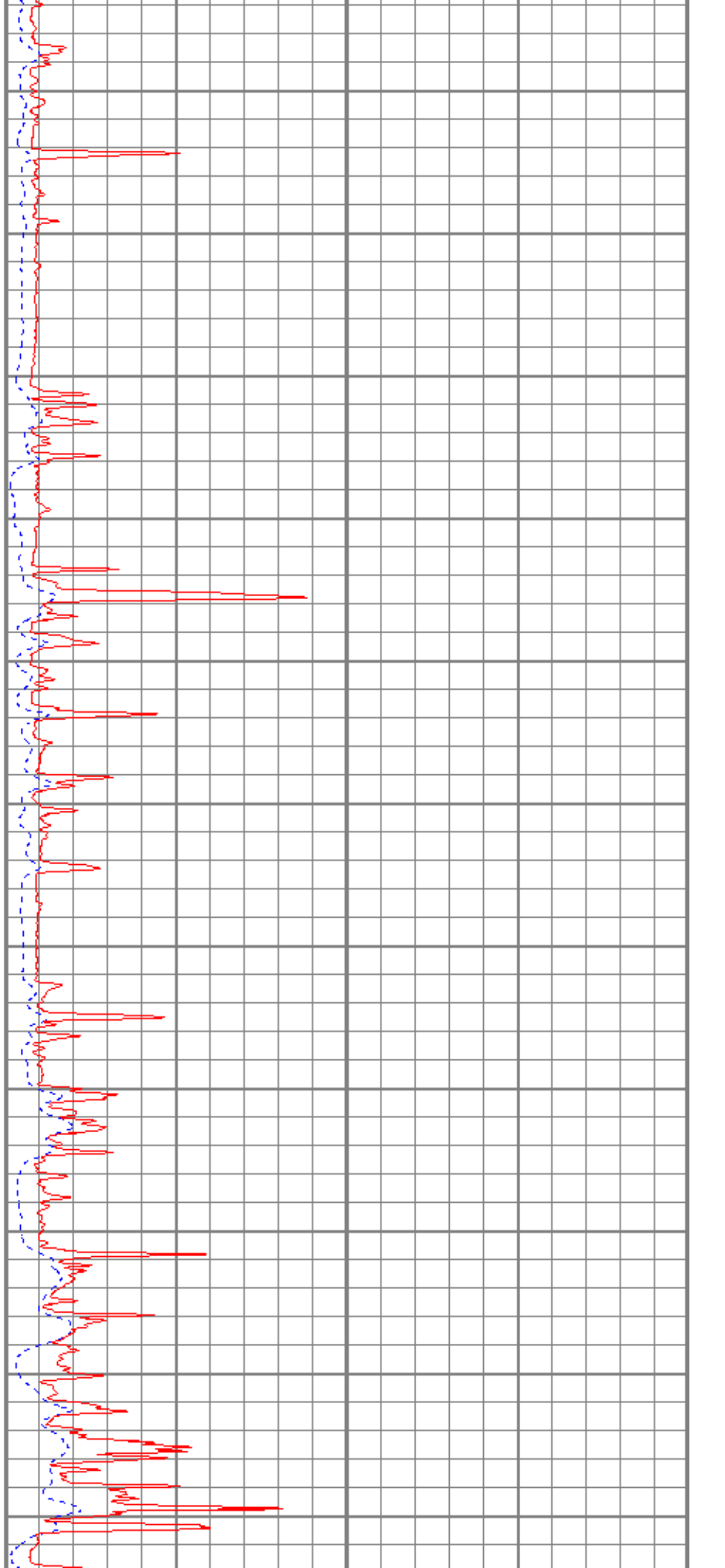
2350

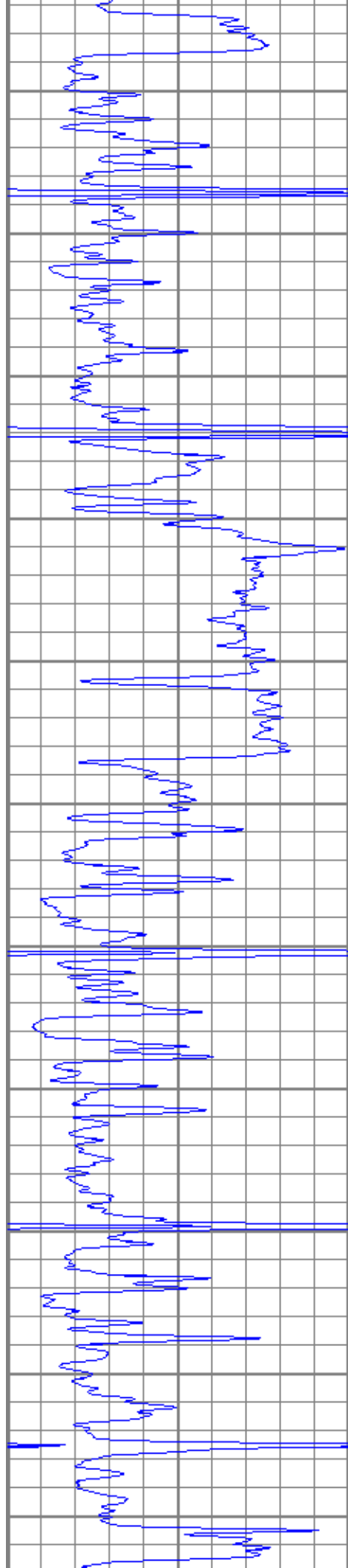
2400

2450

2500

2550





2600

2650

2700

2750

2800

2850

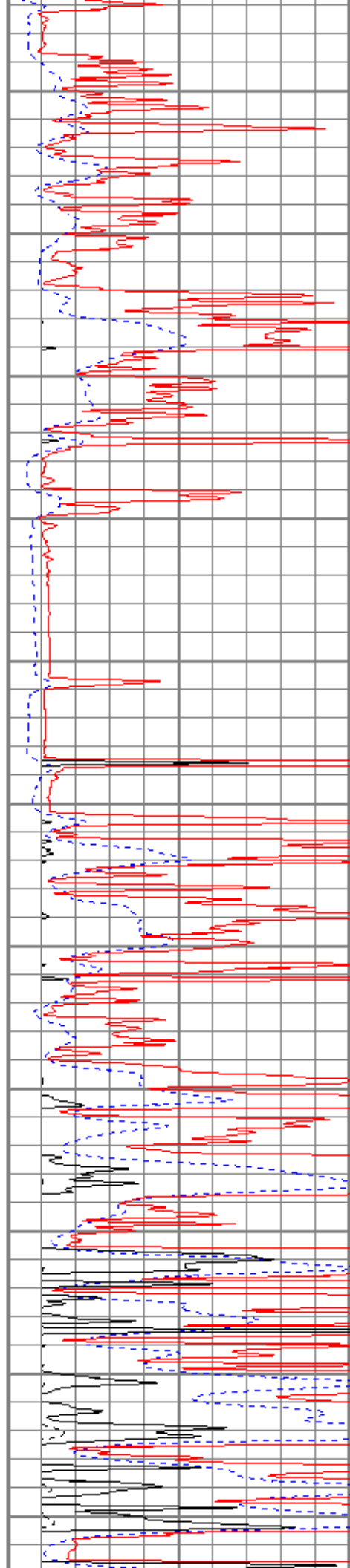
2900

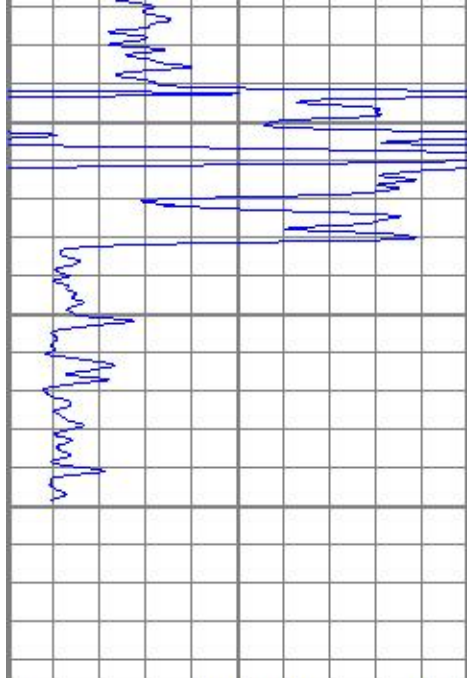
2950

3000

3050

3100



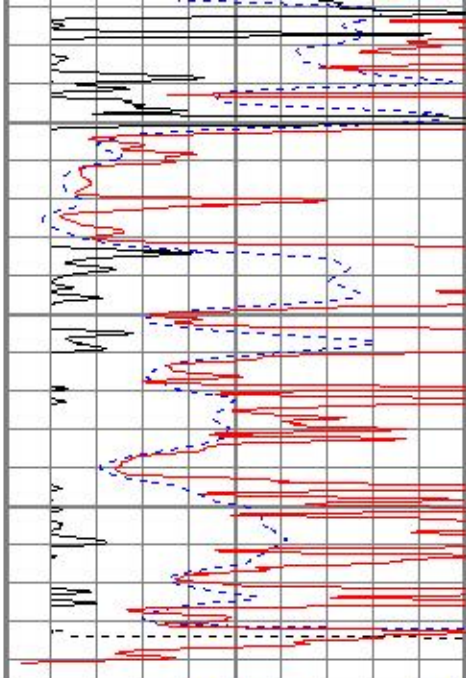


3150

3200

3250

0 GR (GAPI) 150



0 RILD (Ohm-m) 50

0 RLL3 (Ohm-m) 50

50 RILD x 10 (Ohm-m) 500

50 RLL3 x 10 (Ohm-m) 500



MAIN PASS

Database File aopcr#1-23oh.db
 Dataset Pathname pass2
 Presentation Format kdil
 Dataset Creation Tue Sep 18 09:16:29 2018
 Charted by Depth in Feet scaled 1:240

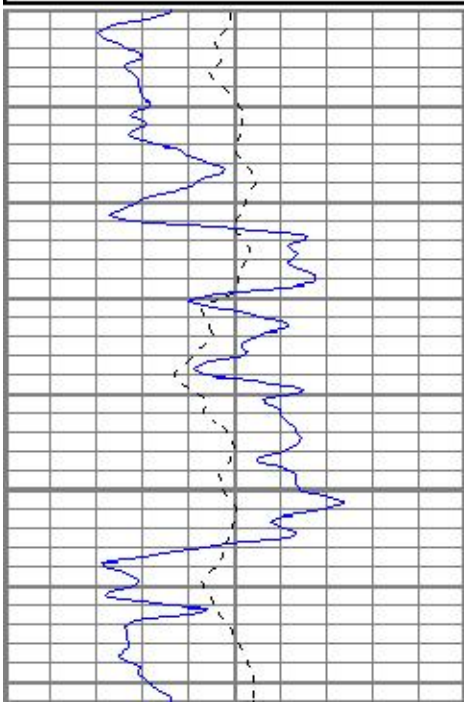
0 GR (GAPI) 150

-100 SP (mV) 100

0.2 RILD (Ohm-m) 2000

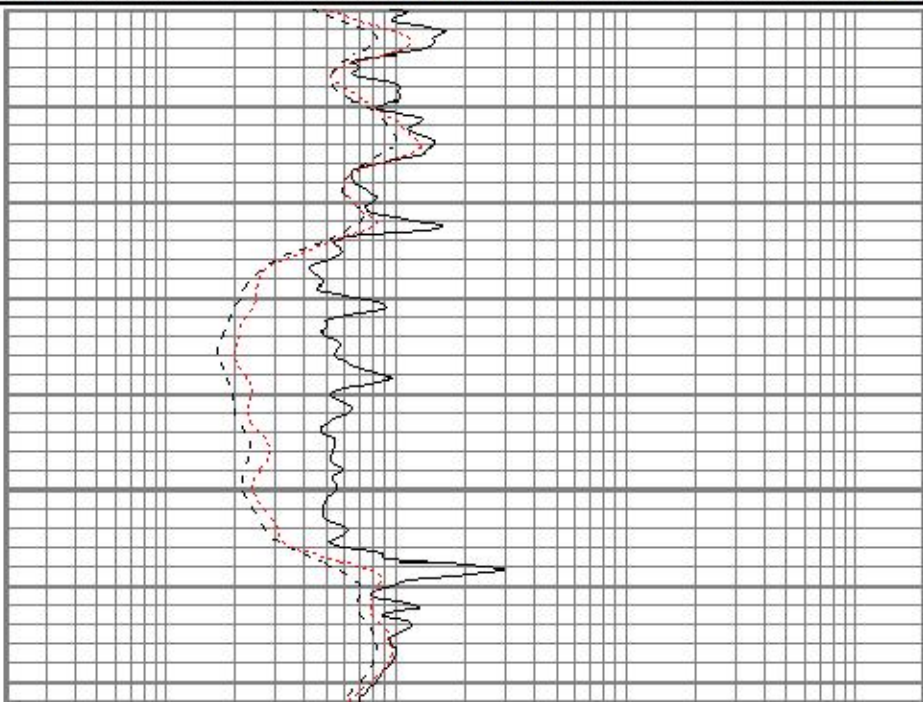
0.2 RLL3 (Ohm-m) 2000

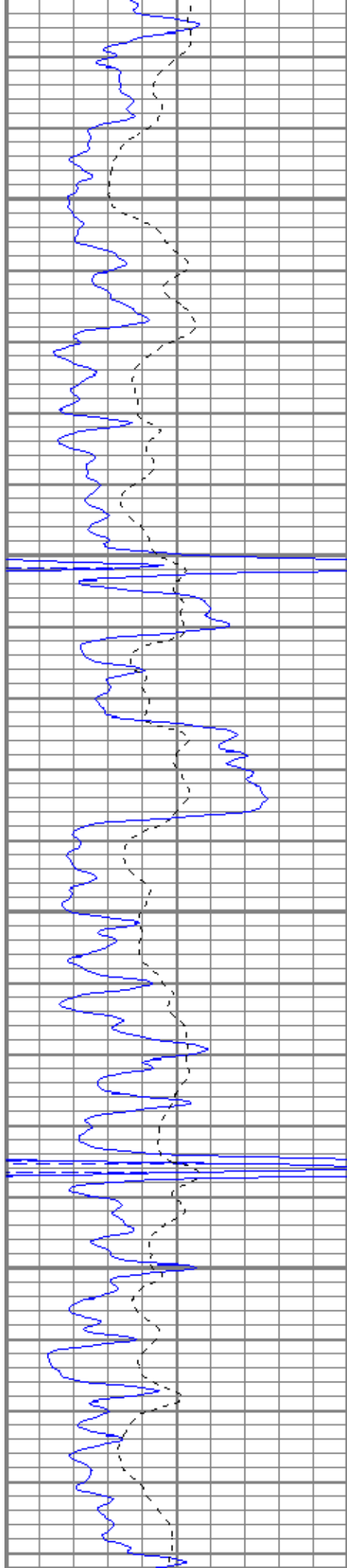
0.2 RILM (Ohm-m) 2000



2400

2450



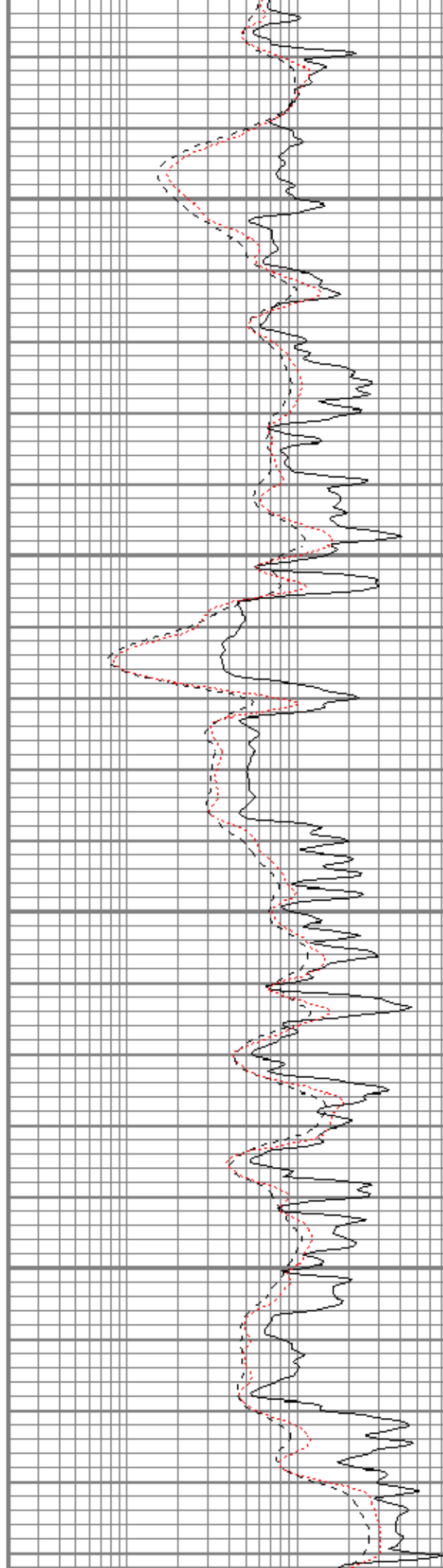


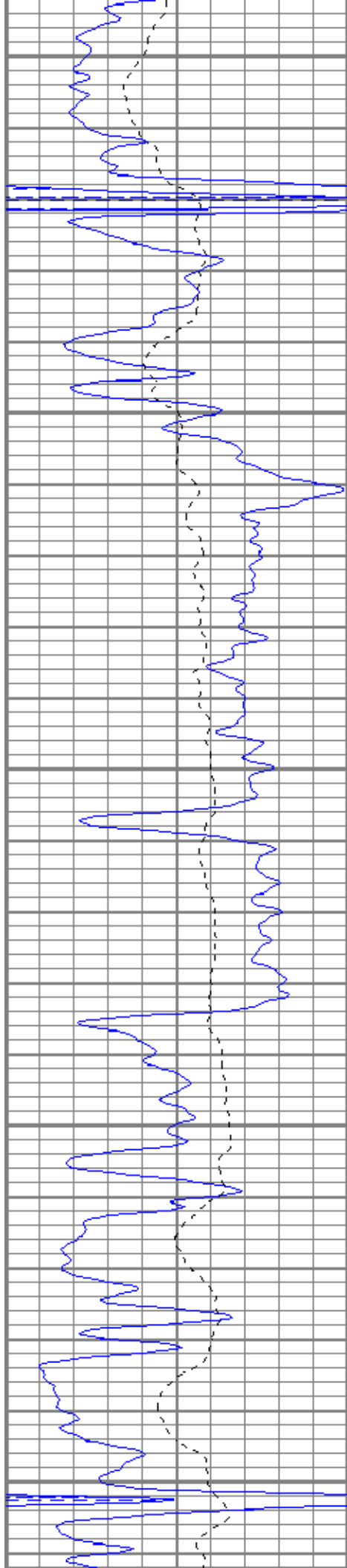
2500

2550

2600

2650





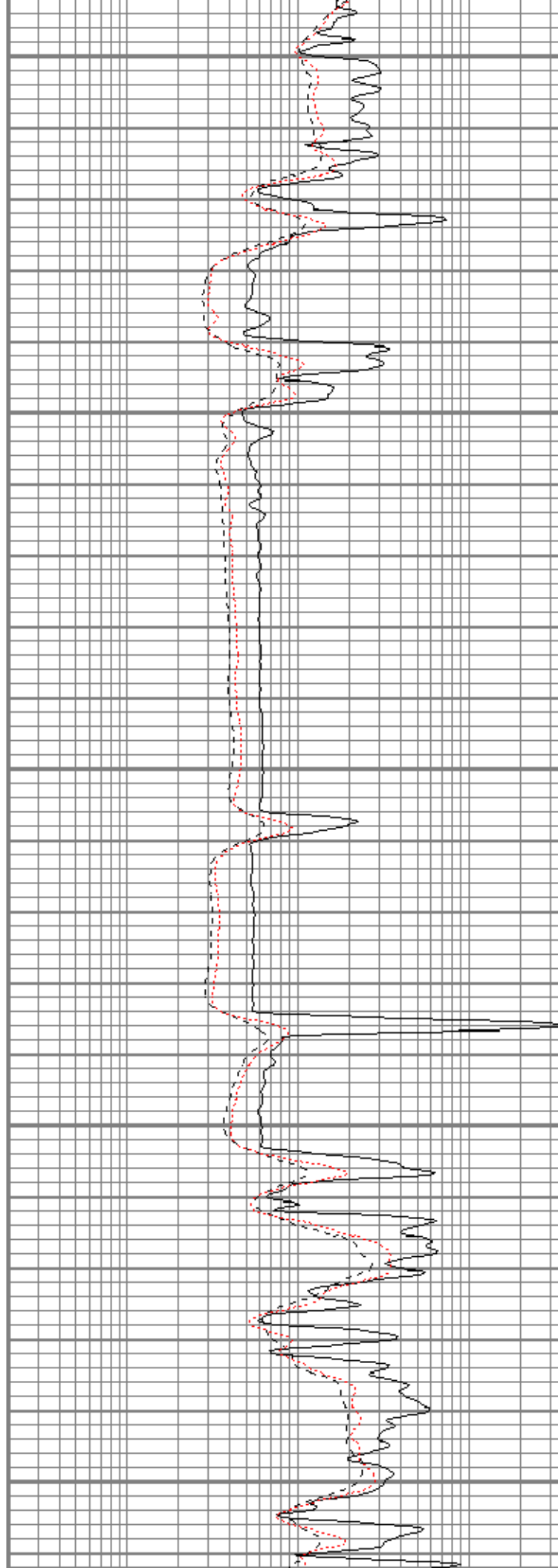
2700

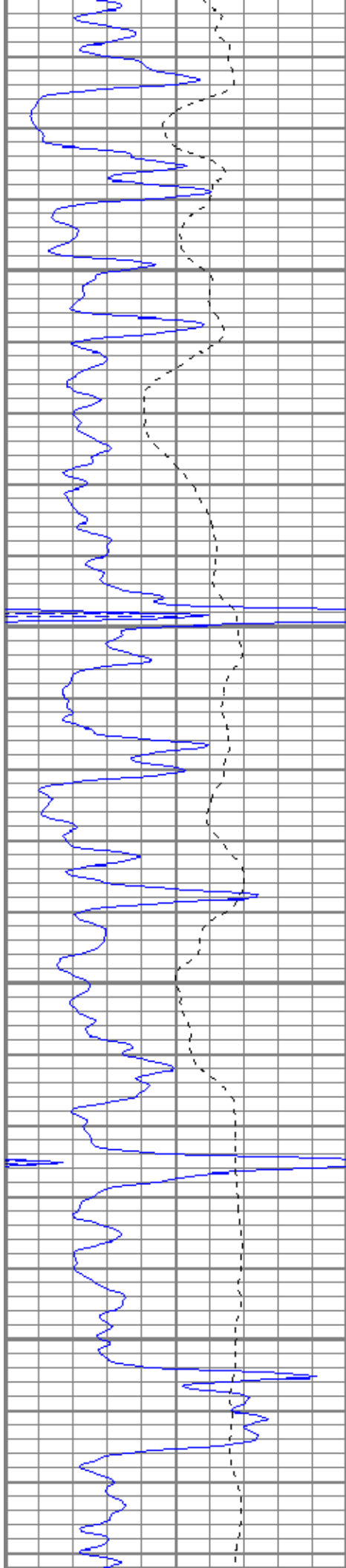
2750

2800

2850

2900



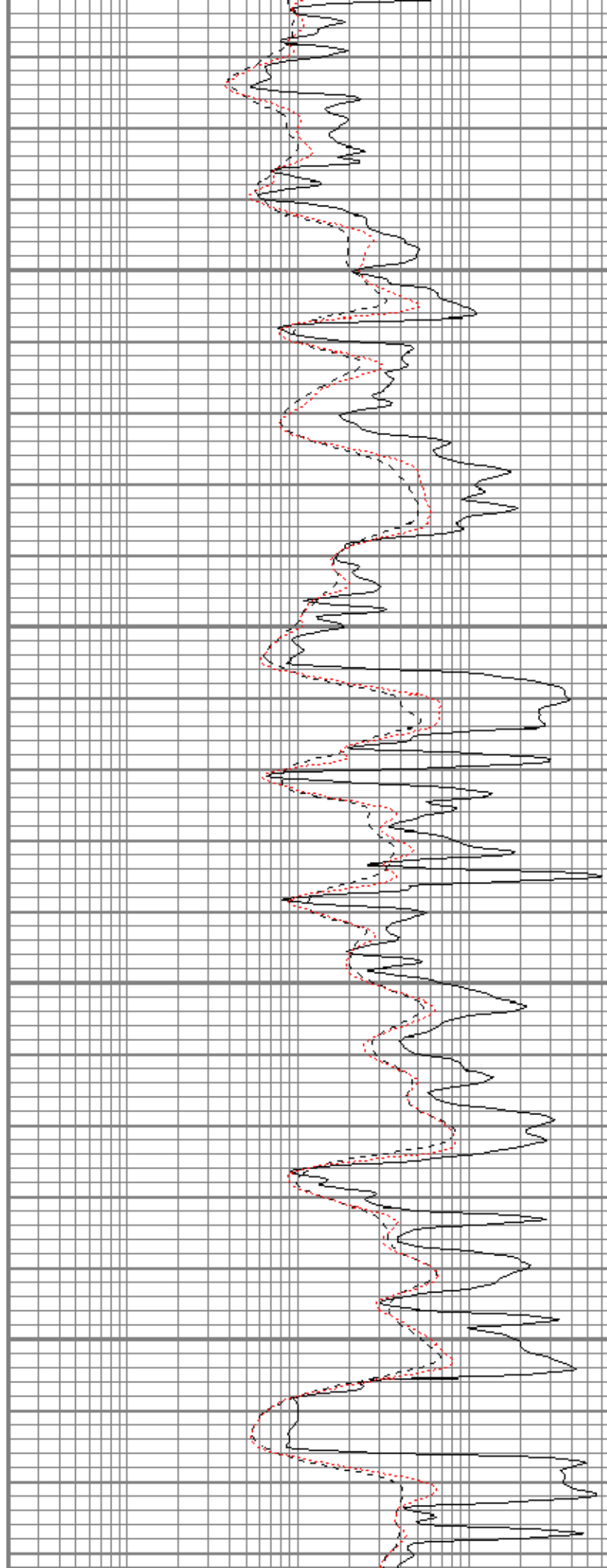


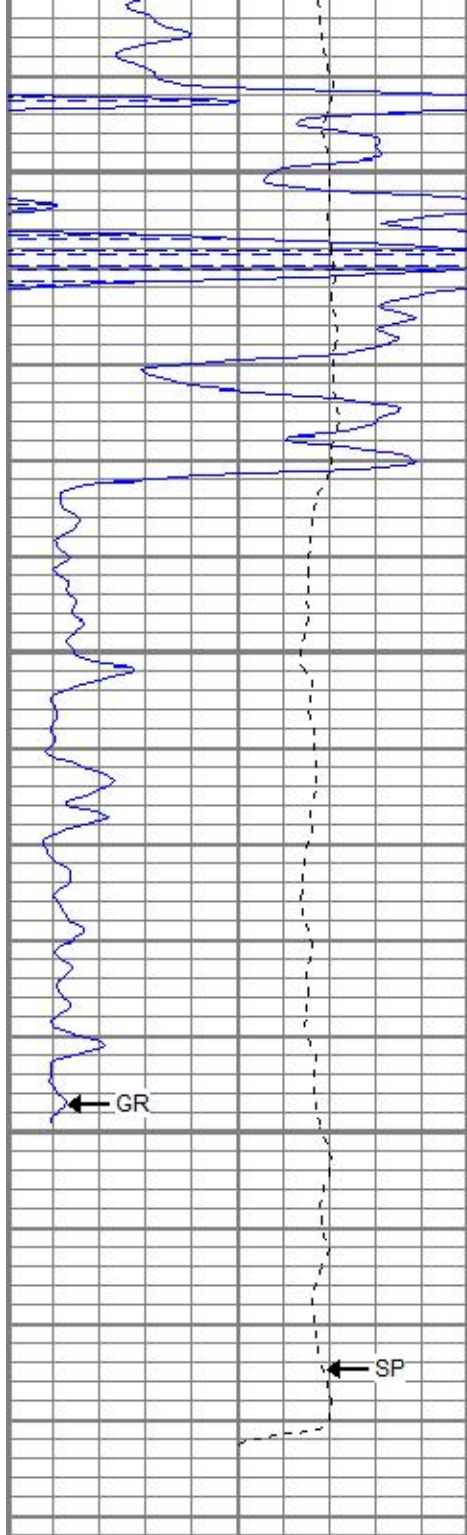
2950

3000

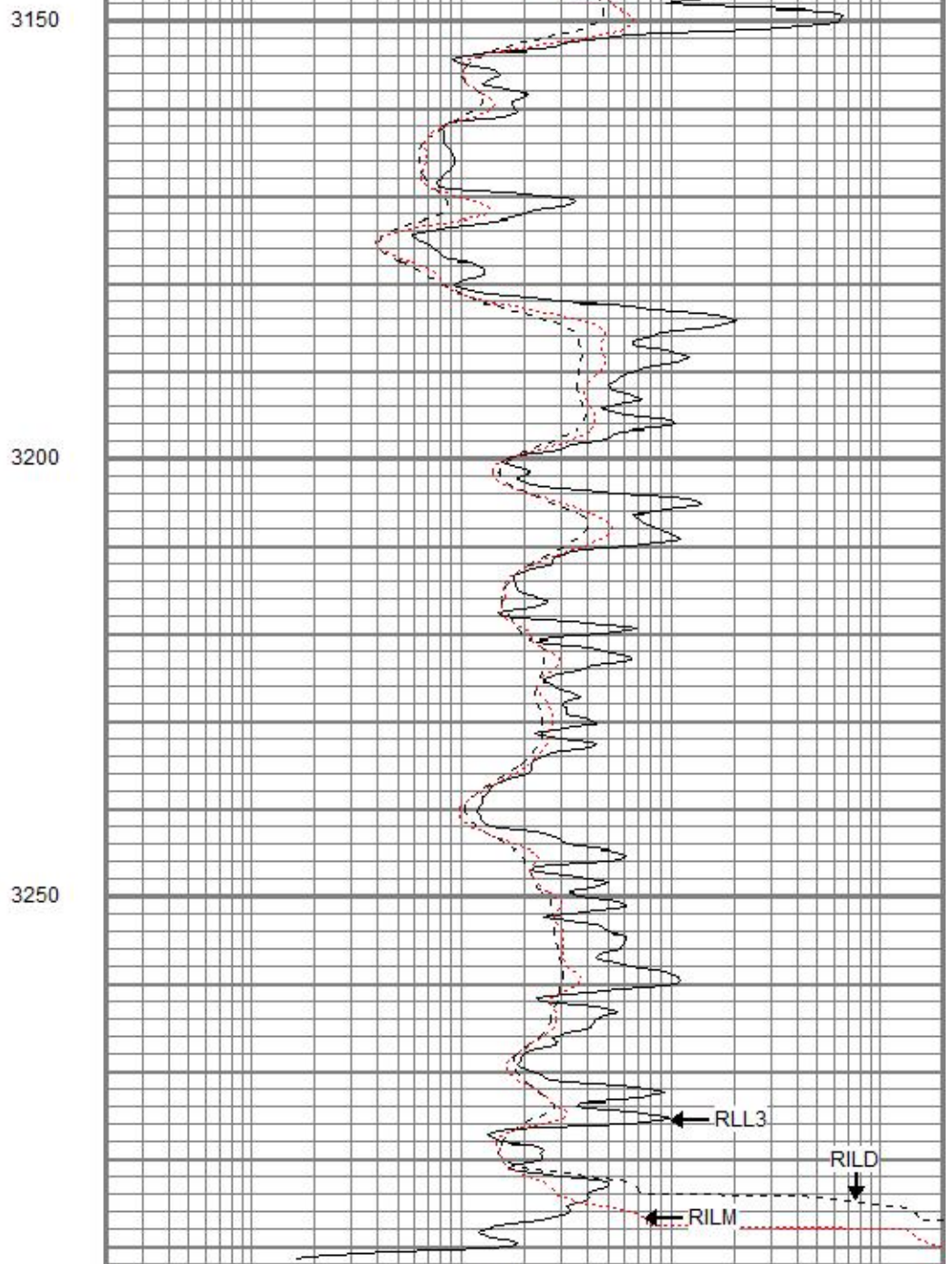
3050

3100





0	GR (GAPI)	150
-100	SP (mV)	100



0.2	RILD (Ohm-m)	2000
0.2	RLL3 (Ohm-m)	2000
0.2	RILM (Ohm-m)	2000

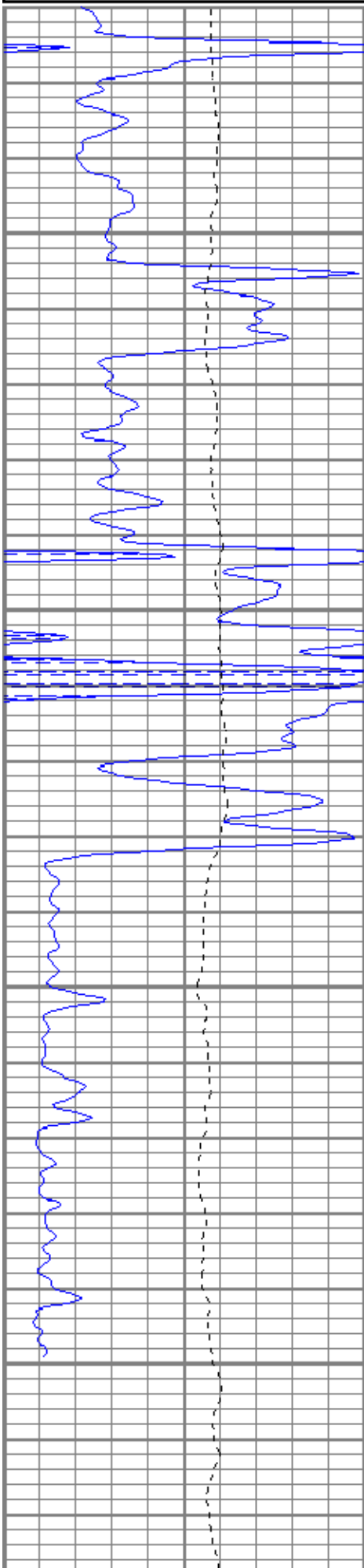


REPEAT SECTION

Database File aopcr#1-23oh.db
 Dataset Pathname pass1.1
 Presentation Format kdil
 Dataset Creation Tue Sep 18 09:38:04 2018
 Charted by Depth in Feet scaled 1:240

	GR (GAPI)	150
-100	SP (mV)	100

0.2	RILD (Ohm-m)	2000
0.2	RLL3 (Ohm-m)	2000
0.2	RILM (Ohm-m)	2000

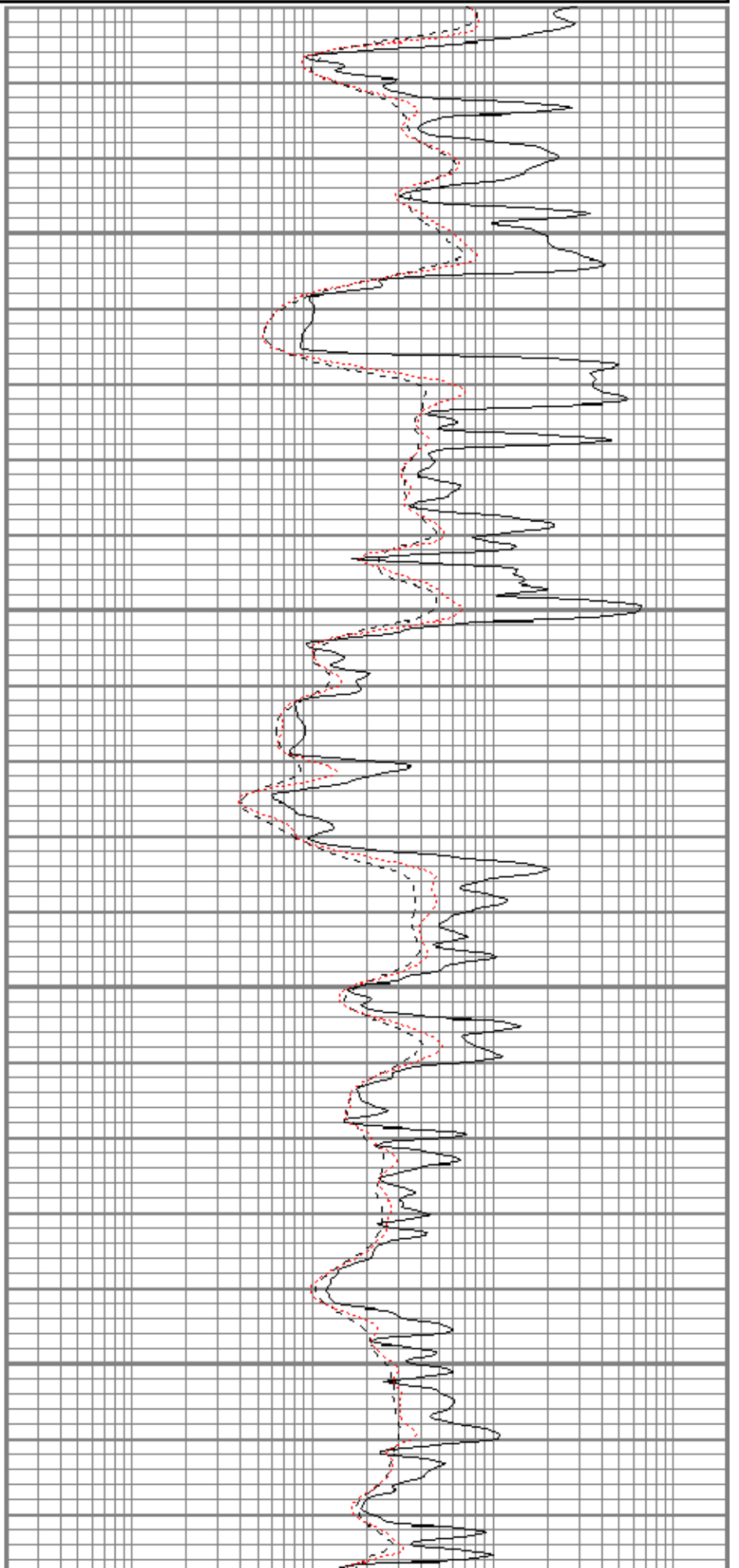


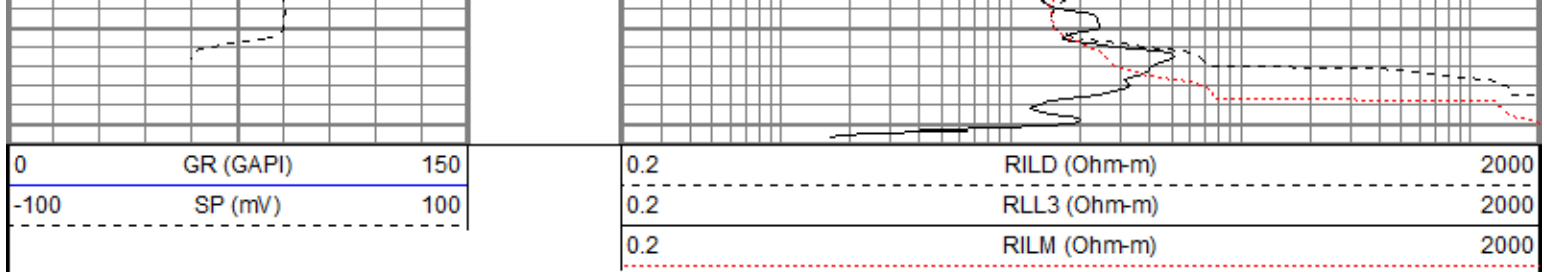
3100

3150

3200

3250





Calibration Report

Database File aopcr#1-23oh.db
 Dataset Pathname pass2
 Dataset Creation Tue Sep 18 09:16:29 2018

Dual Induction Calibration Report

Serial-Model: 5375-G
 Surface Cal Performed: Sat Oct 10 08:33:18 2015
 Downhole Cal Performed: Sat Oct 10 08:33:23 2015
 After Survey Verification Performed: Sat Oct 10 08:33:27 2015

Surface Calibration

Loop:	Readings			References			Results	
	Air	Loop		Air	Loop		m	b
Deep	0.007	0.642	V	0.000	350.000	mmho/m	551.294	-3.816
Medium	0.010	0.728	V	0.000	400.000	mmho/m	556.531	-5.391
Internal:	Zero	Cal		Zero	Cal		m	b
Deep	0.007	0.642	V	0.000	350.000	mmho/m	550.717	-3.768
Medium	0.010	0.729	V	0.000	550.000	mmho/m	764.510	-7.354

Downhole Calibration

Internal:	Readings			References			Results	
	Zero	Cal		Zero	Cal		m	b
Deep	0.145	350.239	mmho/m	-0.044	350.323	mmho/m	1.001	-0.189
Medium	0.435	400.472	mmho/m	-0.037	400.340	mmho/m	1.001	-0.473
Shallow	2.440	0.018	V	500.000	2.000	Ohm-m	185.000	1.624

After Survey Verification

Internal:	Readings			Targets			Results	
	Zero	Cal		Zero	Cal		m'	b'
Deep	0.000	0.000	mmho/m	0.145	350.239	mmho/m	1.001	-0.189
Medium	0.000	0.000	mmho/m	0.435	400.472	mmho/m	1.001	-0.473
Shallow	0.000	0.000	Ohm-m	500.000	2.000	Ohm-m	1.000	0.000

Neutron Calibration Report

Serial Number: ADM5139
 Tool Model: lithogearhart
 Performed: (Not Performed)

Calibrator Value: 1 NAPI

Calibrator Reading: 1 cps

Sensitivity: 1 NAPI/cps

Temperature Calibration Report

Serial Number: WithMC
 Tool Model: WMC
 Performed: (Not Performed)

	Reference	Reading
Low Reference:	0.00 degF	0.00 degF
High Reference:	1.00 degF	1.00 degF
Gain:	1.00	
Offset:	0.00	
Delta Spacing	1	

Inclinometer Calibration Report

Performed:	Mon Aug 07 11:02:07 2017				
	Low Read.	High Read.	Low Ref.	High Ref.	
X Accelerometer	205.00	1843.00	-1.00	1.00	gee
Y Accelerometer	205.00	1843.00	-1.00	1.00	gee
Z Accelerometer					gee

Gamma Ray Calibration Report

Serial Number:	WithMC	
Tool Model:	WMC	
Performed:	Mon Aug 07 11:03:41 2017	
Calibrator Value:	1.0	GAPI
Background Reading:	0.0	cps
Calibrator Reading:	1.0	cps
Sensitivity:	0.9000	GAPI/cps

Sensor	Offset (ft)	Schematic	Description	Length (ft)	O.D. (in)	Weight (lb)
GR	40.47		CHD-STD	0.50	1.69	1.00
ACCY	39.30		ADT-WMC (WithMC) Admyr Telemetry With Mudcell	4.58	3.50	120.00
ACCX	39.30					
SSTAT	38.89					
PSTAT	38.05					
ASTAT	38.05		NEU-lithogearhart (ADM5139)	5.65	3.50	85.00
GRD	37.22					
TEMP	37.22					
NEU	33.85					
				CDL-GEARHART (2501)	9.69	4.00
LSD	23.78					
DCAL	23.49					
SSD	23.24					

SP	10.60		DIL-G (5375) Gearhart	21.47	4.00	345.00
CILD	10.60					
CILM	6.89					
RLL3	1.70					

Dataset: aopcr#1-23oh.db: field/well/run1/pass2 Total length: 41.89 ft Total weight: 791.00 lb O.D.: 4.00 in
