



**MICRO
RESISTIVITY
LOG**

Company American Oil LLC.
Well PCR #1-23
Field Lorraine
County Ellsworth
State Kansas

Company American Oil LLC.
Well PCR #1-23
Field Lorraine
County Ellsworth State Kansas

Location: 1138' FSL & 857' FWL
API #: 15 053 21366
SEC 23 TWP 17S RGE 9W
Permanent Datum Ground Level Elevation 1774'
Log Measured From KB 8' AGL
Drilling Measured From KB
Elevation
CDNL
DIL
Other Services
K.B. 1782'
D.F. 1781'
G.L. 1774'

Date	9-18-18
Run Number	Two
Depth Driller	3290'
Depth Logger	3292'
Bottom Logged Interval	3290'
Top Log Interval	2400'
Casing Driller	8 5/8" @ 473'
Casing Logger	473'
Bit Size	7 7/8"
Type Fluid in Hole	Chemical Mud
Density / Viscosity	8.9/50
PH / Fluid Loss	10.0/7.2
Source of Sample	Pit
Rm @ Meas. Temp	1.3 @ 82 degf
Rmf @ Meas. Temp	0.98 @ 82 degf
Rmc @ Meas. Temp	1.56 @ 82 degf
Source of Rmf / Rmc	Calculated
Rm @ BHT	0.99 @ 108 degf
Time Circulation Stopped	4:30 a.m
Time Logger on Bottom	11:00 a.m
Maximum Recorded Temperature	108 degf
Equipment Number	T-127
Location	Hays, KS.
Recorded By	C. Patterson
Witnessed By	Mr. Austin Klaus

<<< Fold Here >>>

All interpretations are opinions based on inferences from electrical or other measurements and we cannot and do not guarantee the accuracy or correctness of any interpretation, and we shall not, except in the case of gross or willful negligence on our part, be liable or responsible for any loss, costs, damages, or expenses incurred or sustained by anyone resulting from any interpretation made by any of our officers, agents or employees. These interpretations are also subject to our general terms and conditions set out in our current Price Schedule.

Comments

East Of Bushton,KS on Hwy 4 to 11th Rd., Then North 2.7 mi. on 11th Rd.,
East into Location
(or 10th Rd North 2mi. to Ave. W then East 1 mi to 11th Rd., North 1/4 mi East Into)
Thanks for using Gemini Wireline LLC
785-625-1182

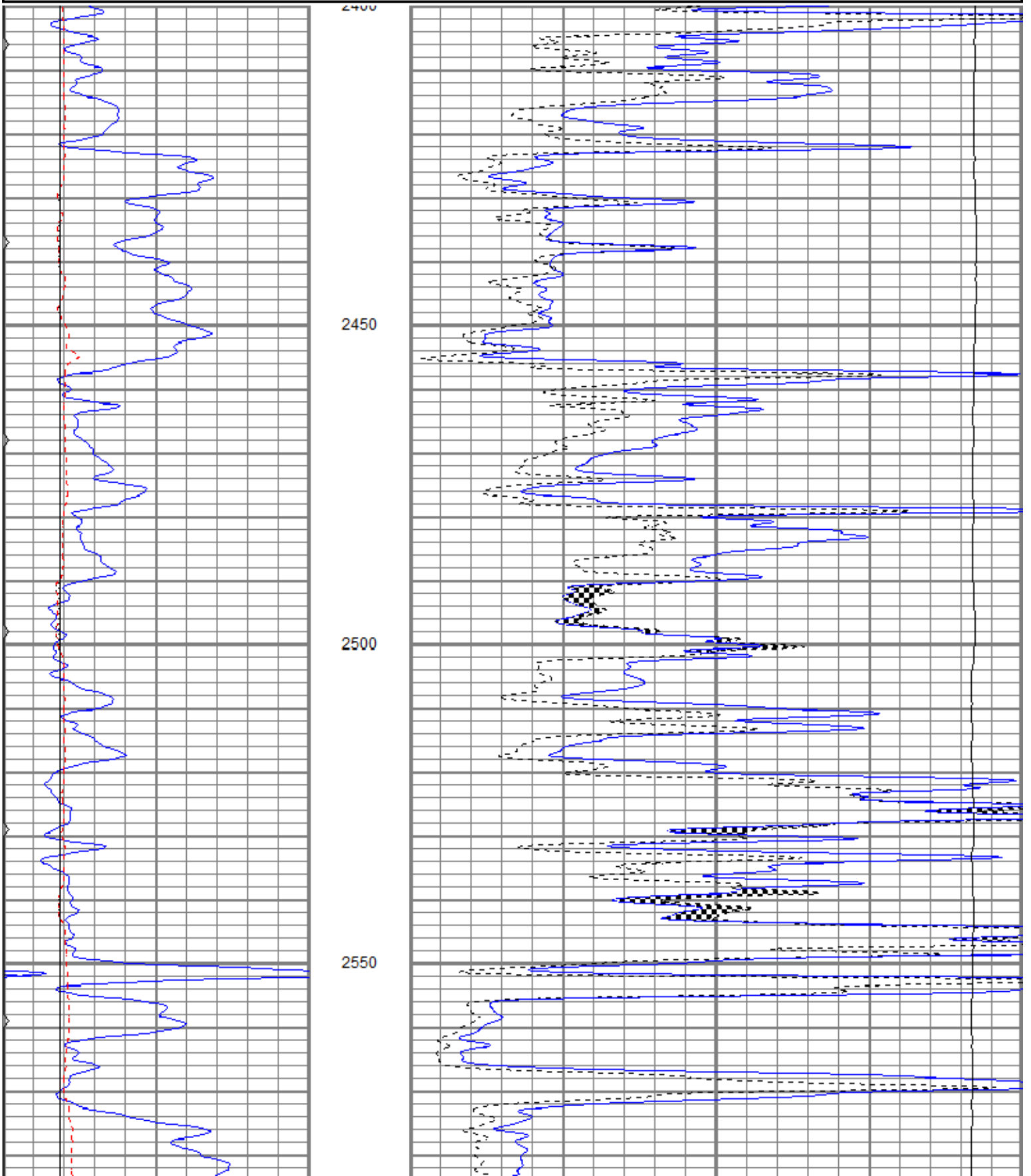


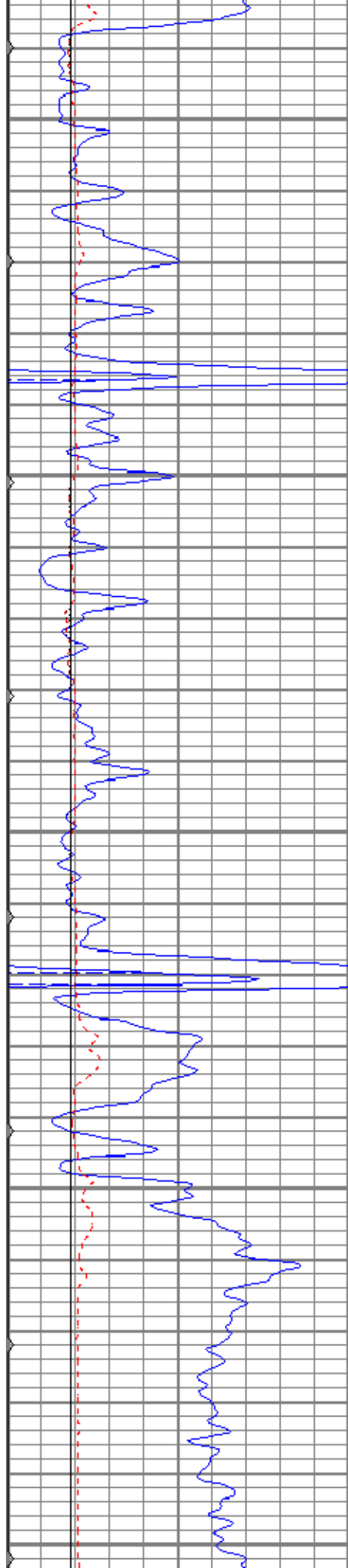
MAIN PASS

Database File aopcr#1-23oh.db
 Dataset Pathname pass5
 Presentation Format kml
 Dataset Creation Tue Sep 18 11:11:14 2018
 Charted by Depth in Feet scaled 1:240

0	GR (GAPI)	150
6	MCAL (in)	16
6	BOREID (in)	16
0	MINMK	50

0	MN 2" (Ohm-m)	20
0	MI 1" (Ohm-m)	20
10000	LTEN (lb)	0





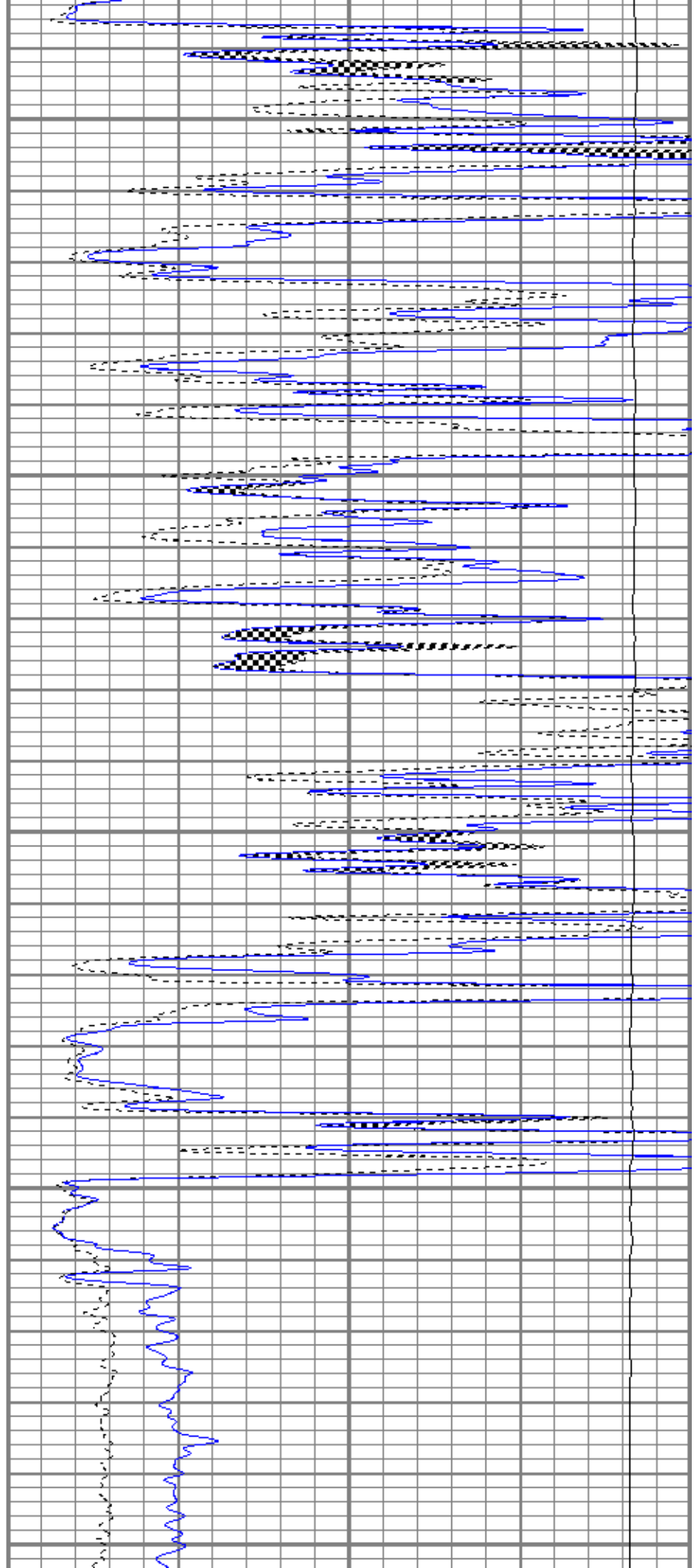
2600

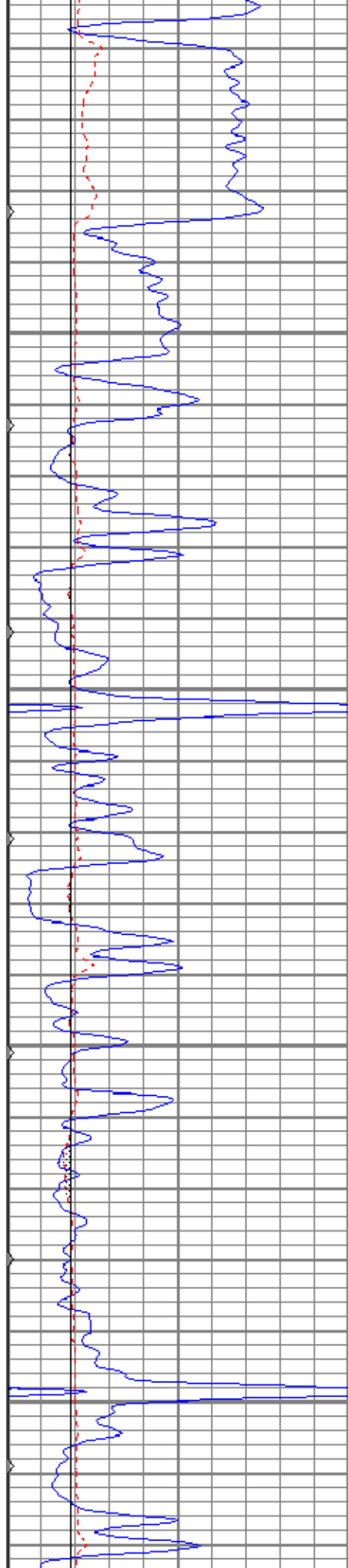
2650

2700

2750

2800



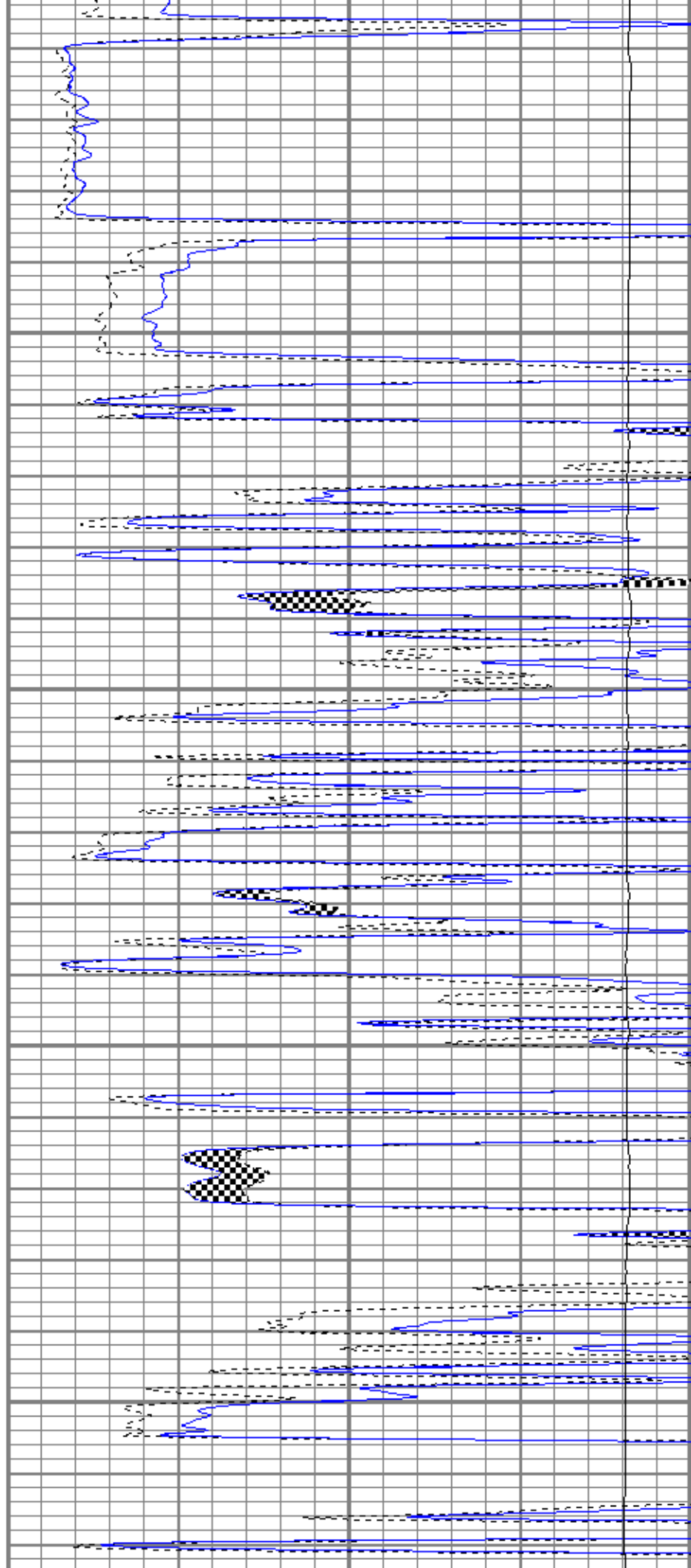


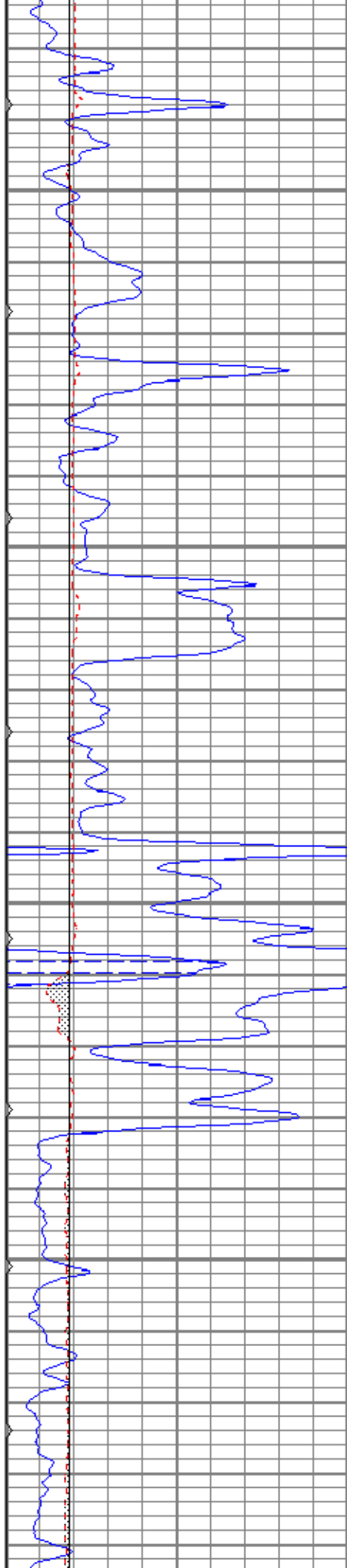
2850

2900

2950

3000



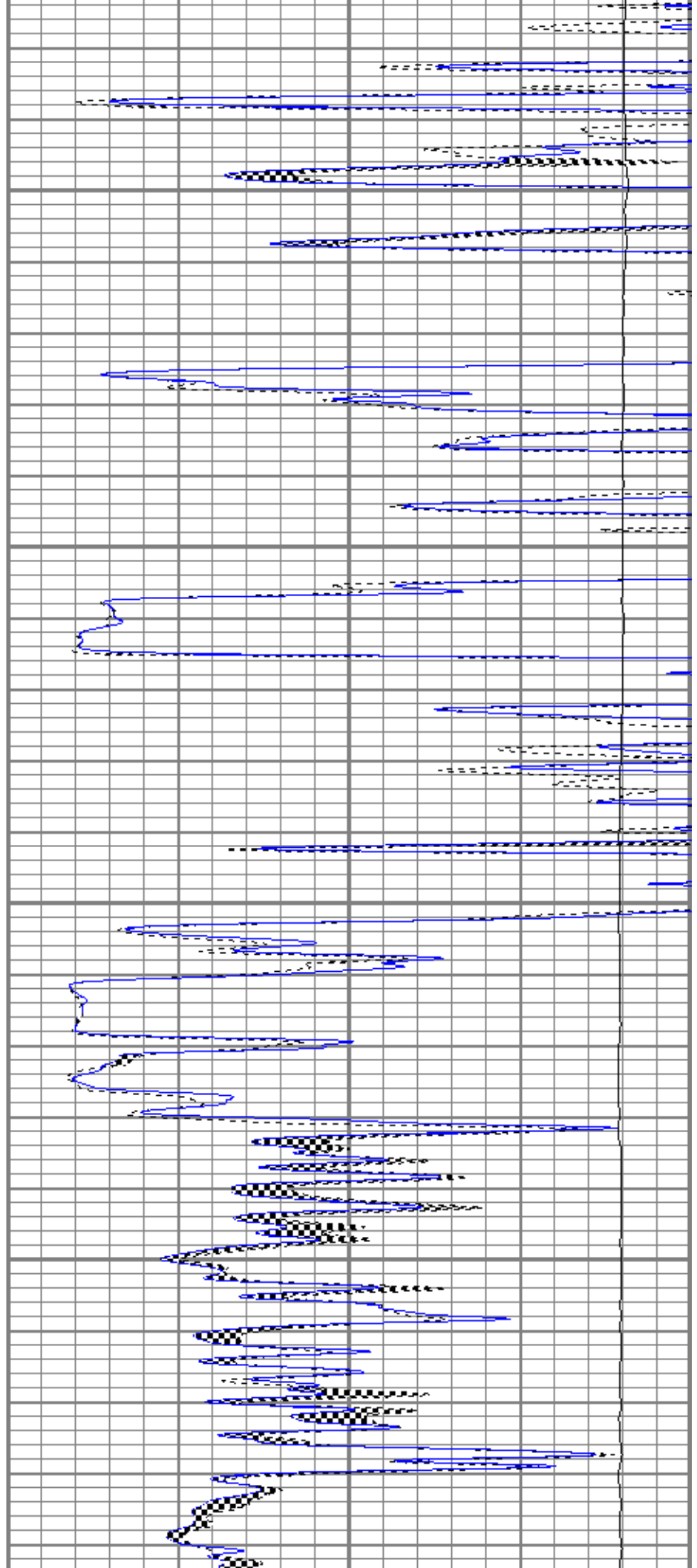


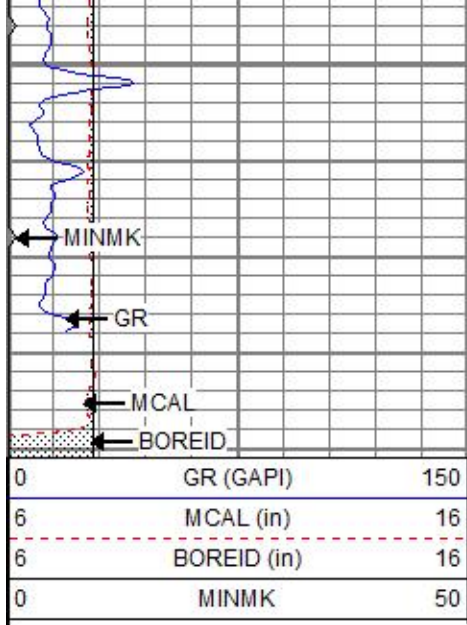
3050

3100

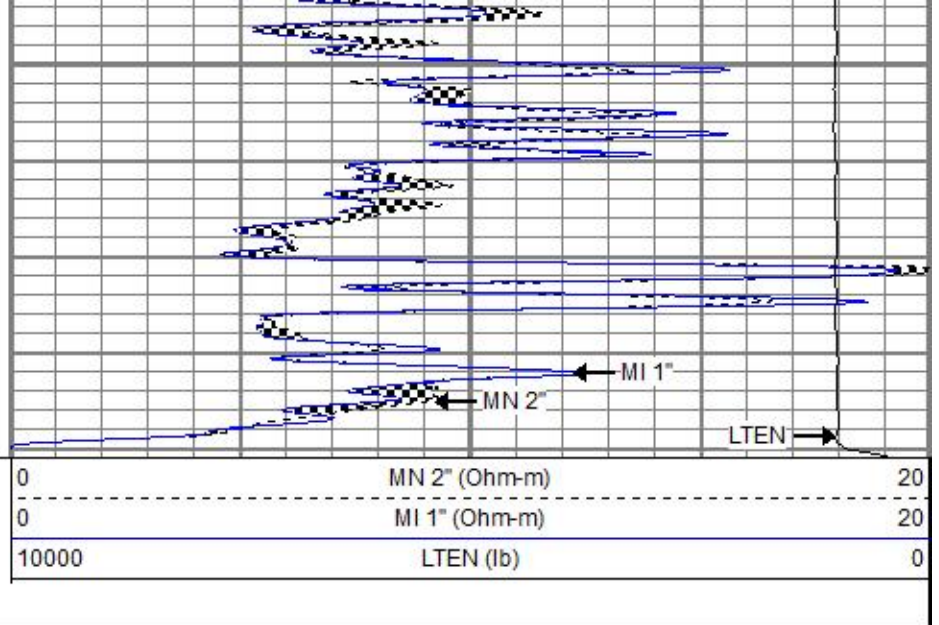
3150

3200





3250

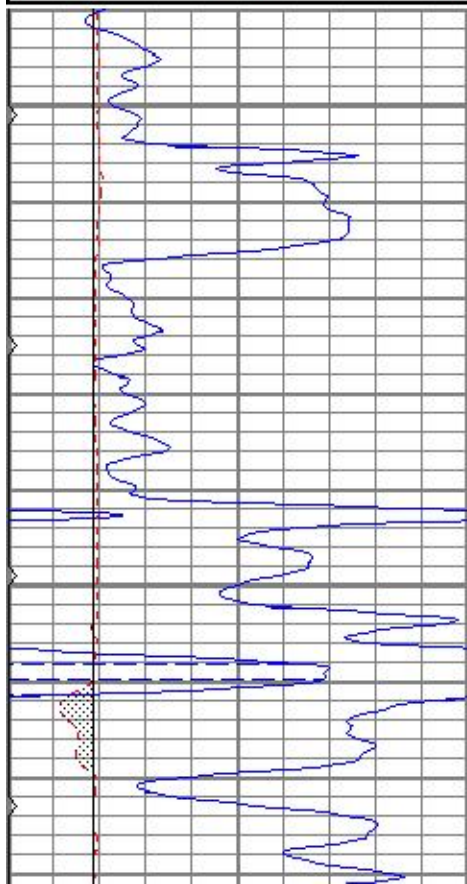


REPEAT SECTION

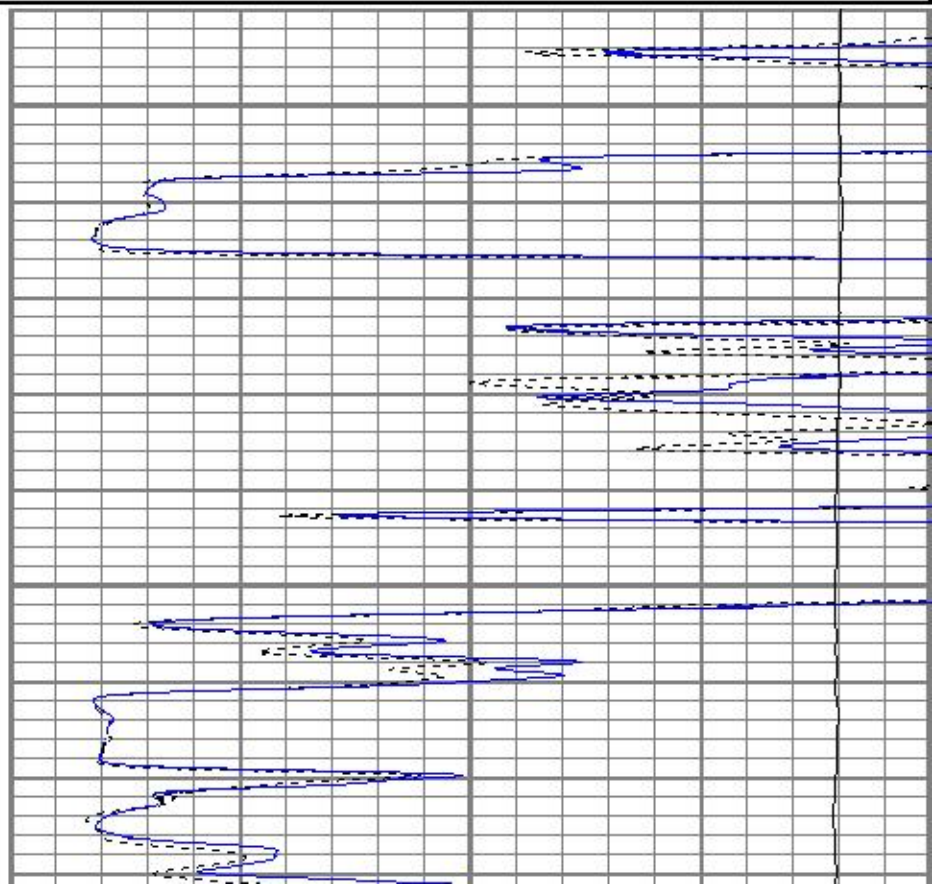
Database File aopcr#1-23oh.db
 Dataset Pathname pass4
 Presentation Format kml
 Dataset Creation Tue Sep 18 10:58:47 2018
 Charted by Depth in Feet scaled 1:240

0	GR (GAPI)	150
6	MCAL (in)	16
6	BOREID (in)	16
0	MINMK	50

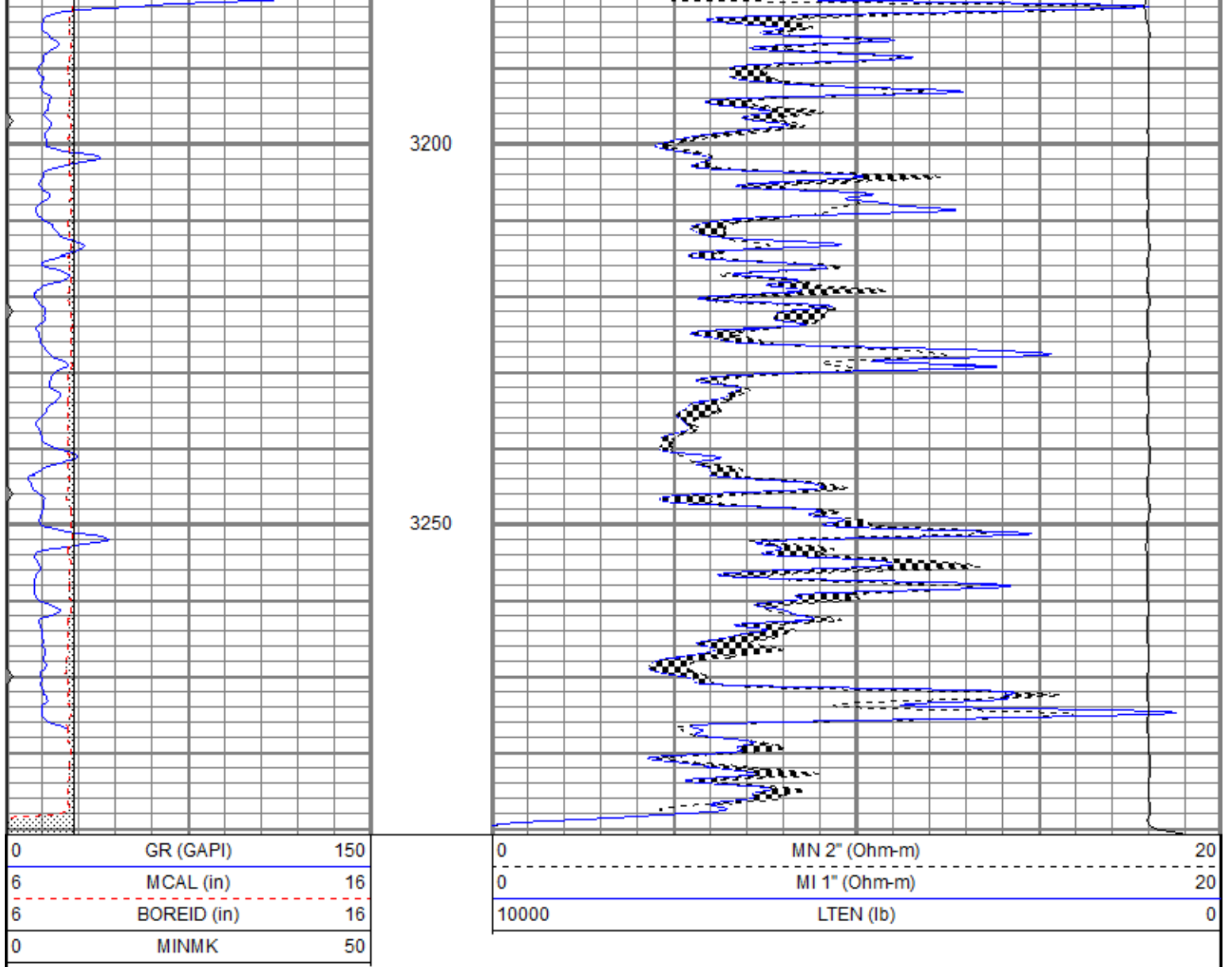
0	MN 2" (Ohm-m)	20
0	MI 1" (Ohm-m)	20
10000	LTEN (lb)	0



3100



3150



Calibration Report

Database File aopcr#1-23oh.db
 Dataset Pathname pass5
 Dataset Creation Tue Sep 18 11:11:14 2018

Microlog Calibration Report

Serial-Model: 9151-Gerhart
 Performed: Tue Sep 18 10:56:14 2018

	Readings			References			Results	
	Zero	Cal		Zero	Cal		m	b
Normal	0.0032	0.4773	V	0.0000	10.0000	Ohm-m	21.0923	-0.0669
Inverse	0.0054	0.6201	V	0.0000	11.5000	Ohm-m	18.7067	-0.1004
Caliper	1.0212	2.0456	V	8.1000	15.0000	in	6.7356	1.2215

Gamma Ray Calibration Report

Serial Number: 2001
 Tool Model: OH
 Performed: Sun Nov 12 16:26:41 2017

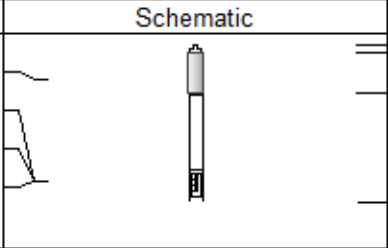
Calibrator Value: 1.0 GAPI

Background Reading: 0.0 cps
 Calibrator Reading: 1.0 cps

Sensitivity:

0.7000

GAPI/cps

Sensor	Offset (ft)	Schematic	Description	Length (ft)	O.D. (in)	Weight (lb)
GR	10.63		CHD-None	0.75	1.50	5.00
MCAL	1.83		GR-OH (2001) 2001	3.56	3.25	40.00
MI	1.83		ML-Gerhart (9151)	9.46	4.00	125.00
MN	1.83		Gerhart Micro			
		Dataset:	aopcr#1-23oh.db: field/well/run1/pass5			
		Total length:	13.77 ft			
		Total weight:	170.00 lb			
		O.D.:	4.00 in			