

**DUAL RECEIVER
CEMENT BOND LOG**

Company JOHN ROY EVANS OIL COMPANY, LLC.
Well PENKA #26-1
Field SNOW WHITE NORTH
County BARTON
State KANSAS

Company JOHN ROY EVANS OIL COMPANY, LLC.
Well PENKA #26-1
Field SNOW WHITE NORTH
County BARTON State KANSAS

Location: AP1 15-009-26231-0000 Other Services
1840' FSL & 975' FEL
NE - SW - NE - SE
SEC 26 TWP 17S RGE 12W
PERF
Permanent Datum GROUND LEVEL Elevation 1807
Log Measured From KELLY BUSHING 7' A.G.L.
Drilling Measured From KELLY BUSHING
Elevation
K.B: 1814
D.F: 1812
G.L: 1807

Date	1-4-19
Run Number	ONE
Depth Driller	3340
Depth Logger	3297
Bottom Logged Interval	3295
Top Log Interval	2070
Open Hole Size	WATER
Type Fluid	
Density / Viscosity	
Max. Recorded Temp.	
Estimated Cement Top	2150
Time Well Ready	
Time Logger on Bottom	
Equipment Number	3362
Location	HAYS, KS
Recorded By	JEREMY SEIB
Witnessed By	P-MAST

Run Number	Borehole Record		Tubing Record	
	Bit	From	To	Size
1	12 1/4	0	660	
2	7 7/8	660	3340	

Casing Record	Size	Wgt/Ft	Top		Bottom
			Weight	From	
Conductor String	8.625		0		660
Surface String	5.5		0		
Production String					
Liner					

<<< Fold Here >>>

All interpretations are opinions based on inferences from electrical or other measurements and we cannot and do not guarantee the accuracy or correctness of any interpretation, and we shall not, except in the case of gross or willful negligence on our part, be liable or responsible for any loss, costs, damages, or expenses incurred or sustained by anyone resulting from any interpretation made by any of our officers, agents or employees. These interpretations are also subject to our general terms and conditions set out in our current Price Schedule.

Comments

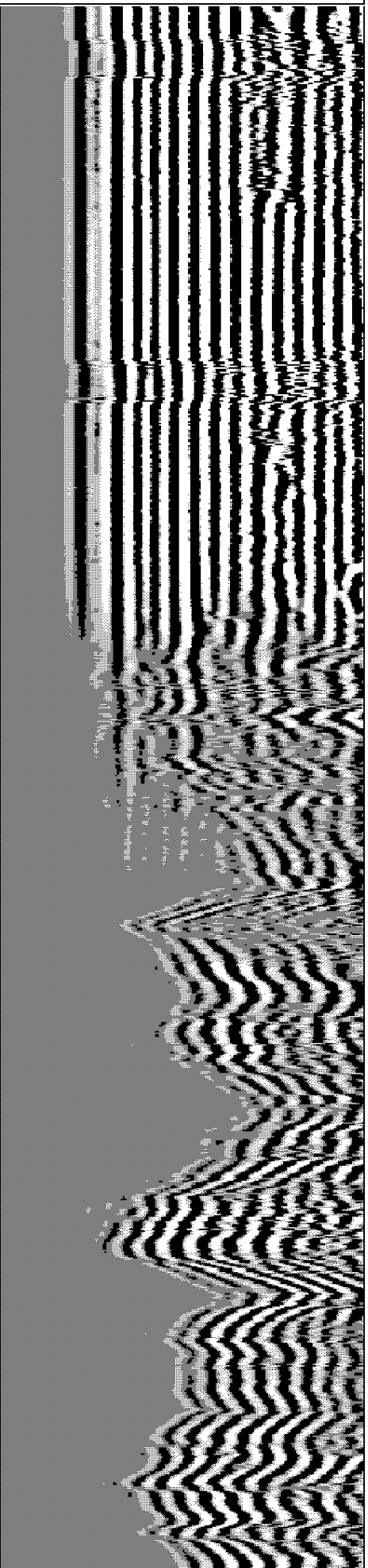
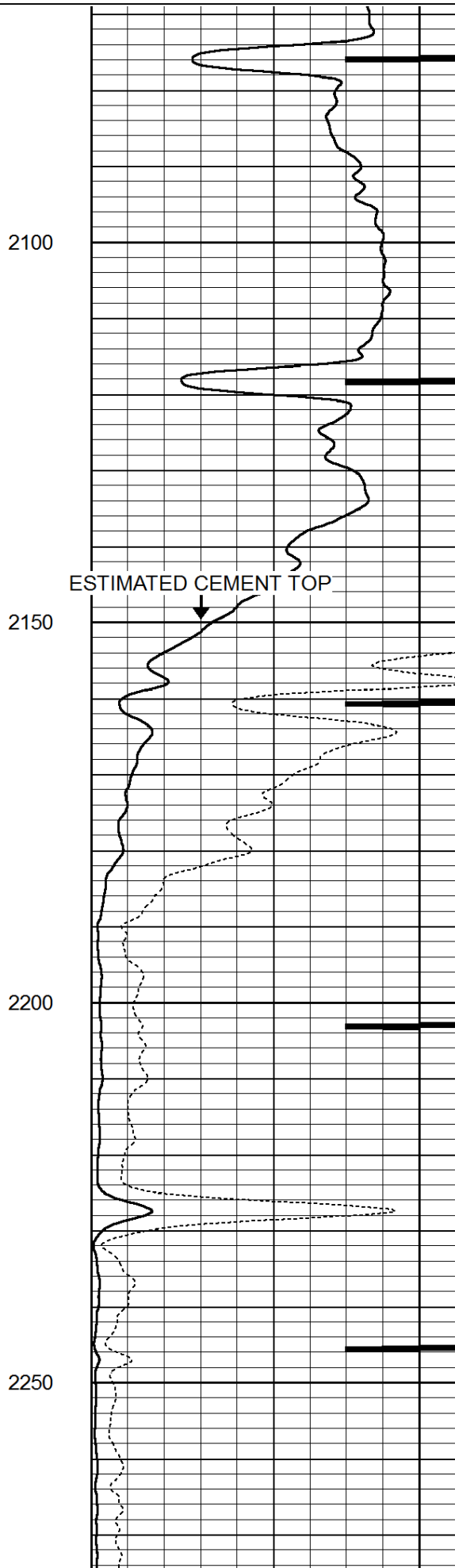
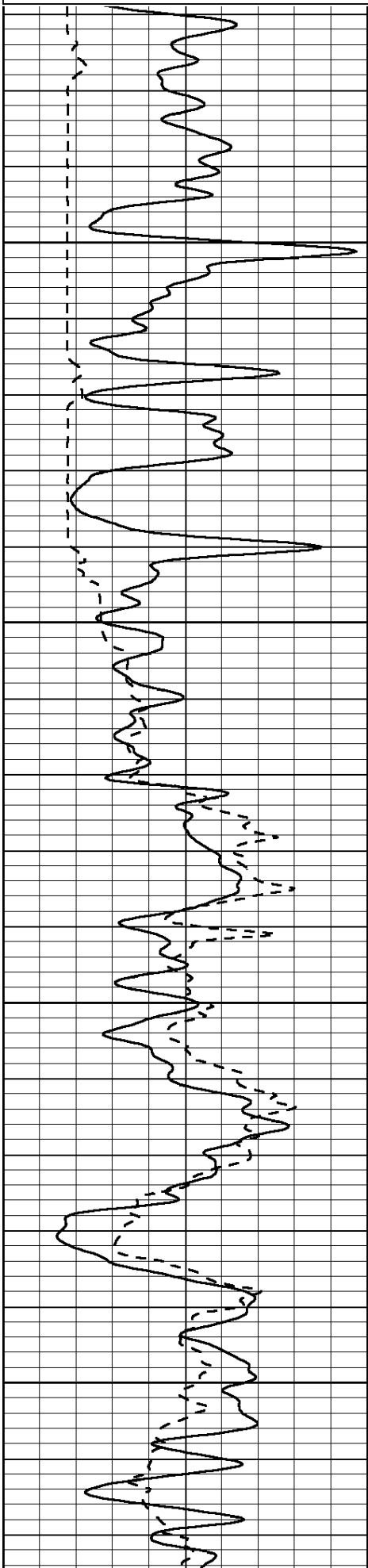
THANK YOU FOR USING ELI WIRELINE SERVICES, INC., HAYS, KS (785) 628-6395
DIRECTIONS: ODIN, KS - 1 1/2 SOUTH ON BLACKTOP - WEST INTO

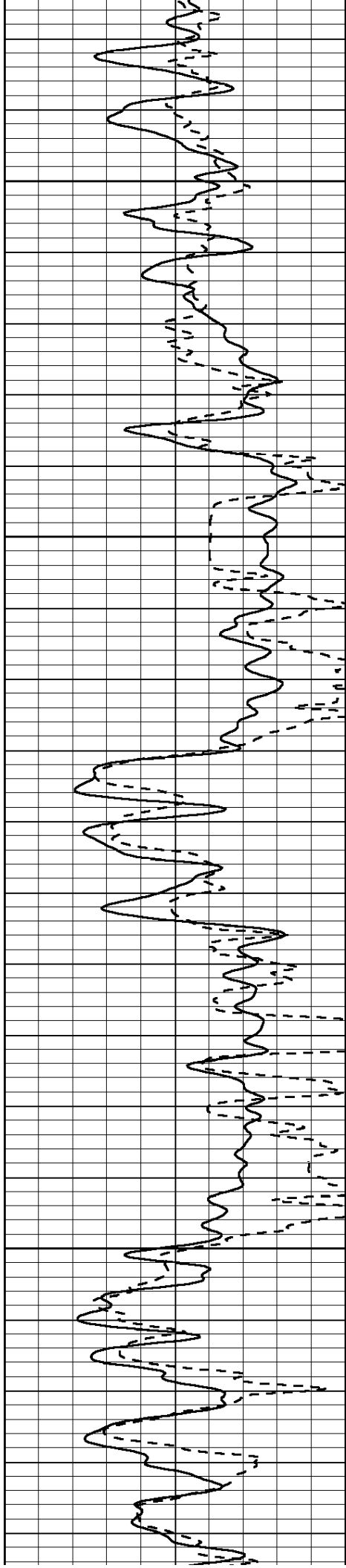
Database File: john roy .db
Dataset Pathname: pass2.2
Presentation Format: dcbl02
Dataset Creation: Fri Jan 04 08:39:17 2019
Charted by: Depth in Feet scaled 1:240

0	Gamma Ray (GAPI)	150
200	5' Travel Time (usec)	1000

0	3' Amplitude (mV)	100
9	CCL	-1
0	Amplified Amplitude (mV)	20

200	5FT VDL	1000
-----	---------	------



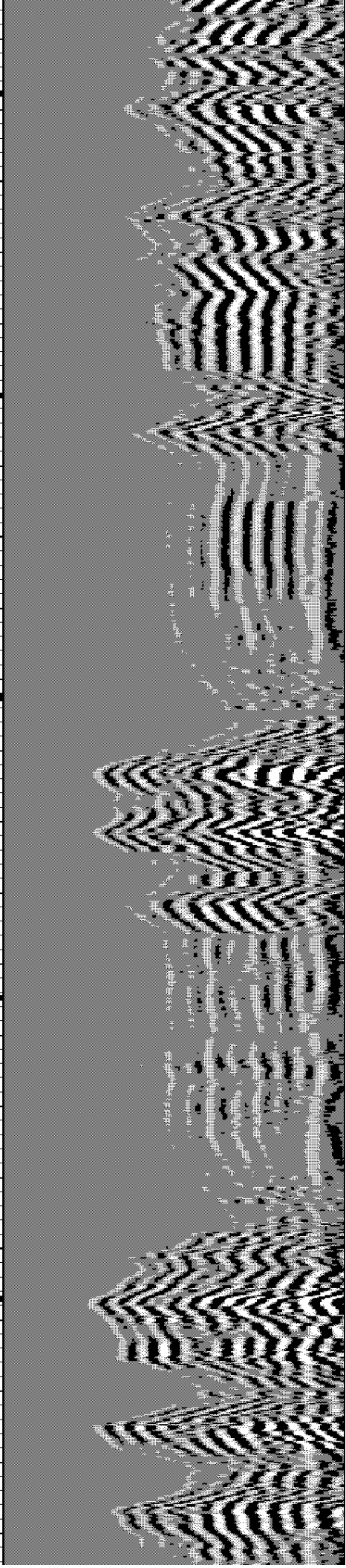
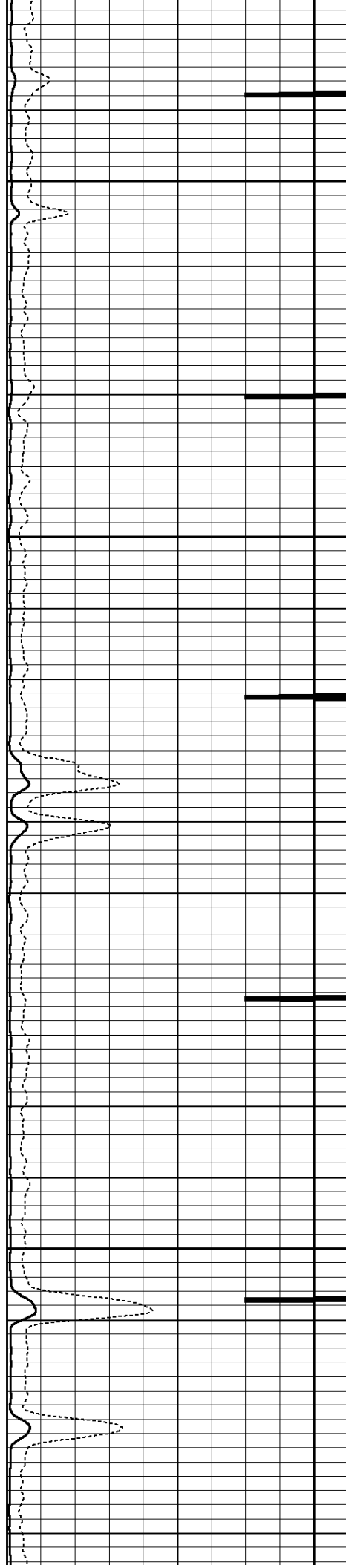


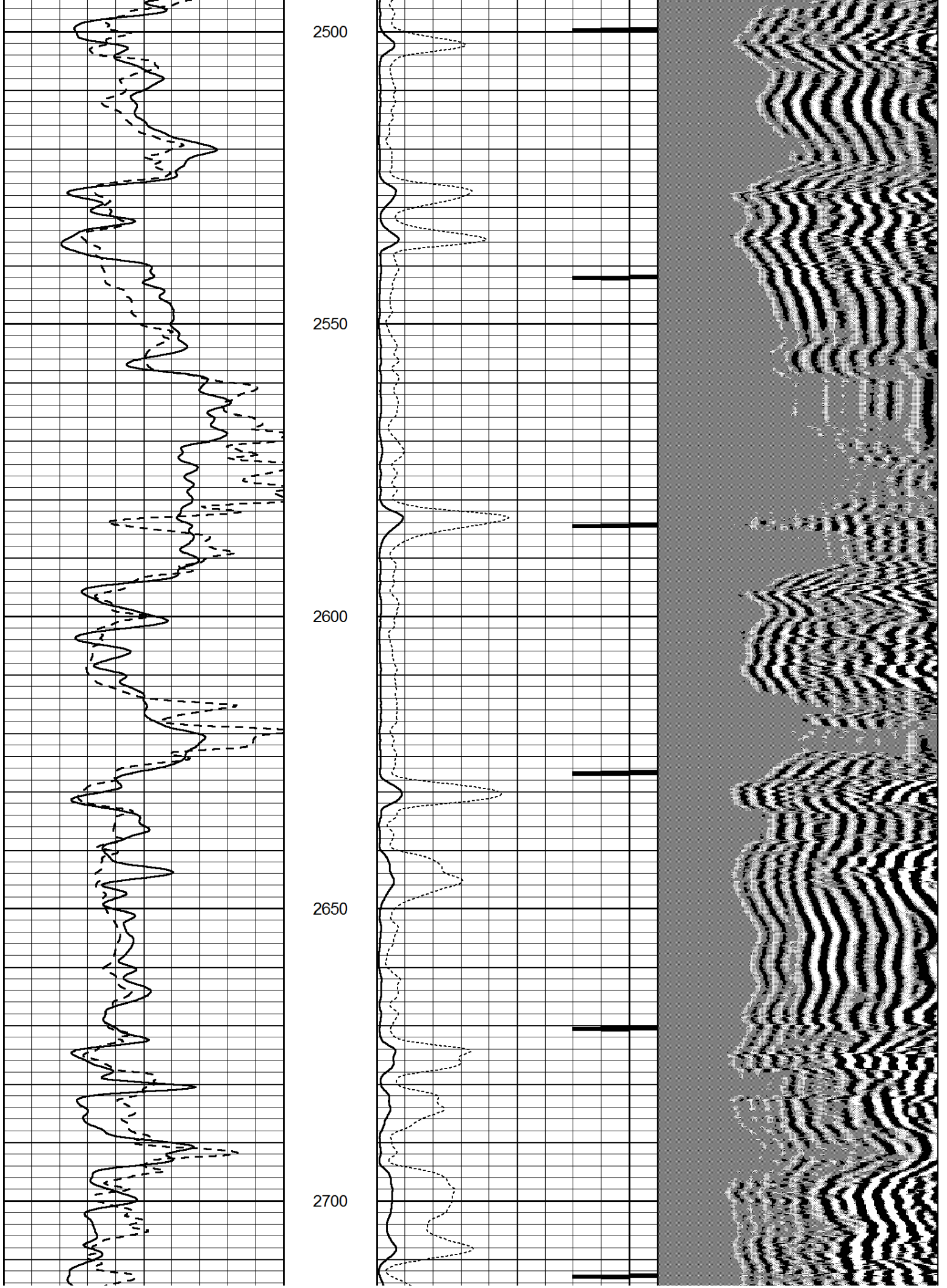
2300

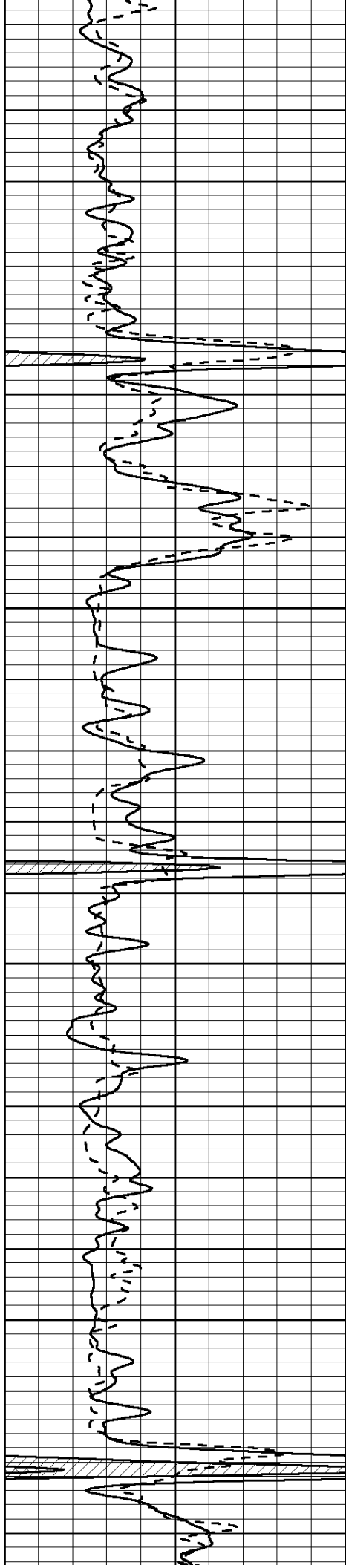
2350

2400

2450





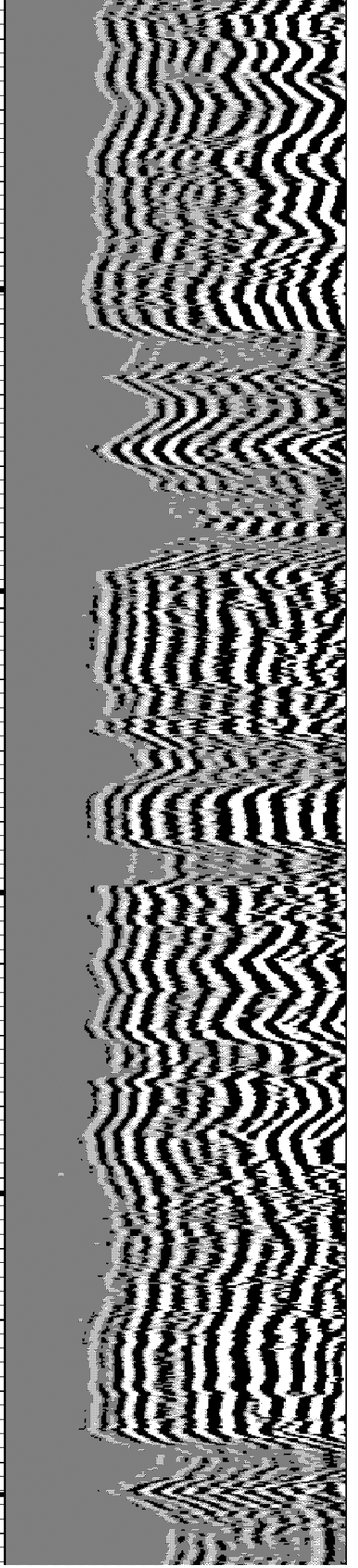
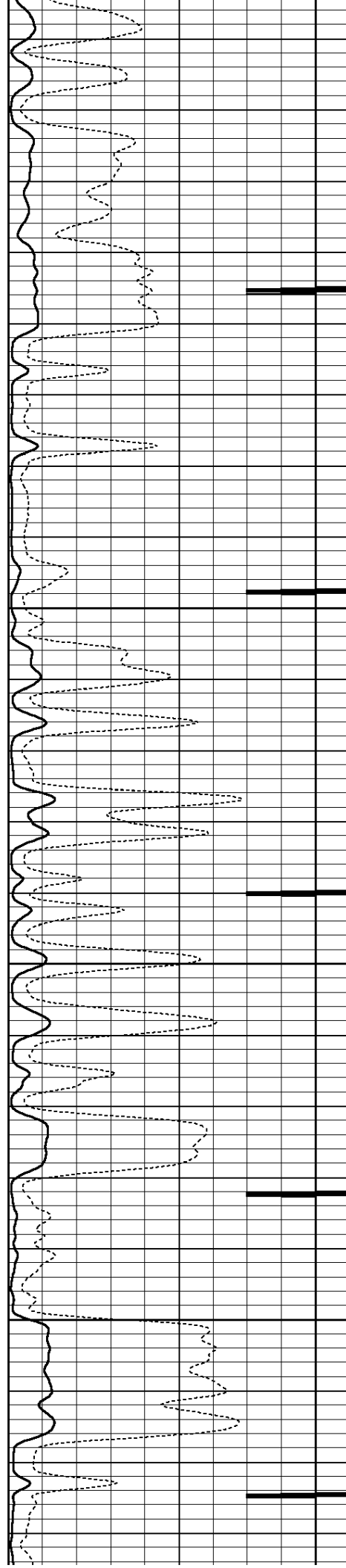


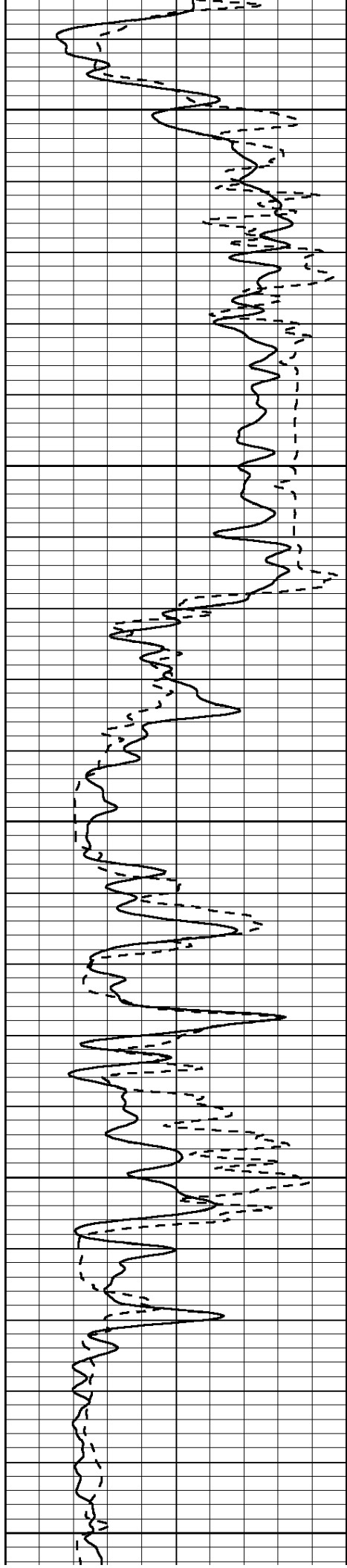
2750

2800

2850

2900





2950

3000

3050

3100

3150

