



DUAL INDUCTION LOG

Company JOHN ROY EVANS OIL COMPANY, LLC.
 Well PENKA #26-1
 Field SNOW WHITE NORTH
 County BARTON
 State KANSAS

Company JOHN ROY EVANS OIL COMPANY, LLC.
 Well PENKA #26-1
 Field SNOW WHITE NORTH
 County BARTON State KANSAS

Location: API # : 15-009-26231-0000
 1840' FSL & 975' FEL
 NE - SW - NE - SE
 Permanent Datum GROUND LEVEL Elevation 1807
 Log Measured From KELLY BUSHING 7' A.G.L.
 Drilling Measured From KELLY BUSHING
 SEC 26 TWP 17S RGE 12W
 Other Services
 CDL/CNL
 MEL/SON
 Elevation
 K.B. 1814
 D.F. 1812
 G.L. 1807

Date	12/29/18
Run Number	ONE
Depth Driller	3340
Depth Logger	3338
Bottom Logged Interval	3336
Top Log Interval	00
Casing Driller	8 5/8"@660'
Casing Logger	660
Bit Size	7 7/8"
Type Fluid in Hole	CHEMICAL MUD
Density / Viscosity	8.9/44
pH / Fluid Loss	10.0/7.6
Source of Sample	FLOWLINE
Rim @ Meas. Temp	.500@40F
Rmf @ Meas. Temp	.375@40F
Rmc @ Meas. Temp	.600@40F
Source of Rmf / Rmc	MEASUREMENT
Rim @ BHT	.182@110F
Time Circulation Stopped	8 HOURS
Time Logger on Bottom	7:45 A.M.
Maximum Recorded Temperature	110F
Equipment Number	922339
Location	HAYS, KANSAS
Recorded By	JEFF LUEBBERS
Witnessed By	WYATT URBAN
	GARY KIRMER

<<< Fold Here >>>

All interpretations are opinions based on inferences from electrical or other measurements and we cannot and do not guarantee the accuracy or correctness of any interpretation, and we shall not, except in the case of gross or willful negligence on our part, be liable or responsible for any loss, costs, damages, or expenses incurred or sustained by anyone resulting from any interpretation made by any of our officers, agents or employees. These interpretations are also subject to our general terms and conditions set out in our current Price Schedule.

Comments

THANK YOU FOR USING ELI WIRELINE HAYS, KANSAS (785) 628-6395
 DIRECTIONS
 ODIN, KS., 1 1/2S. ON BLKTOP, W. INTO



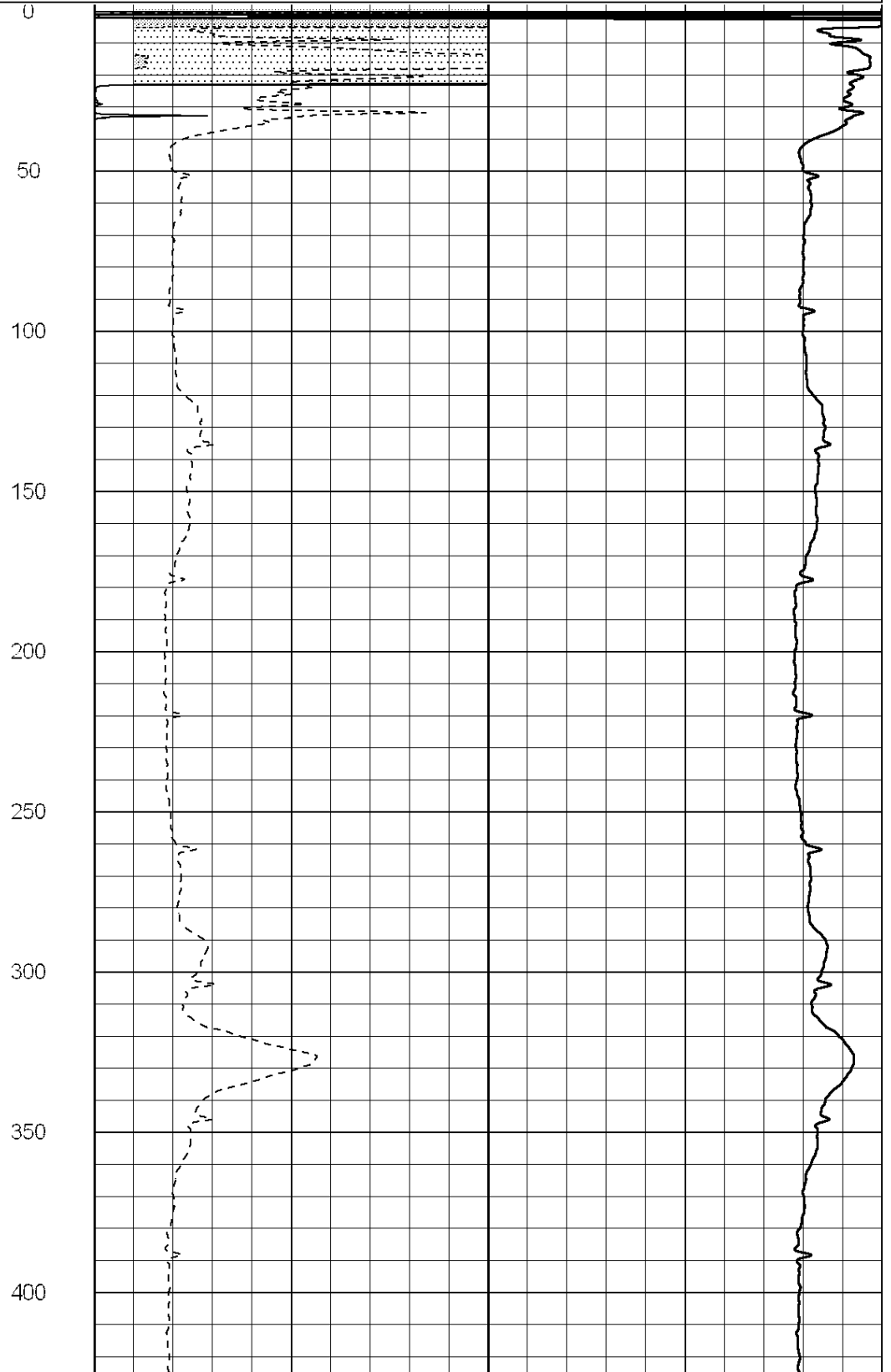
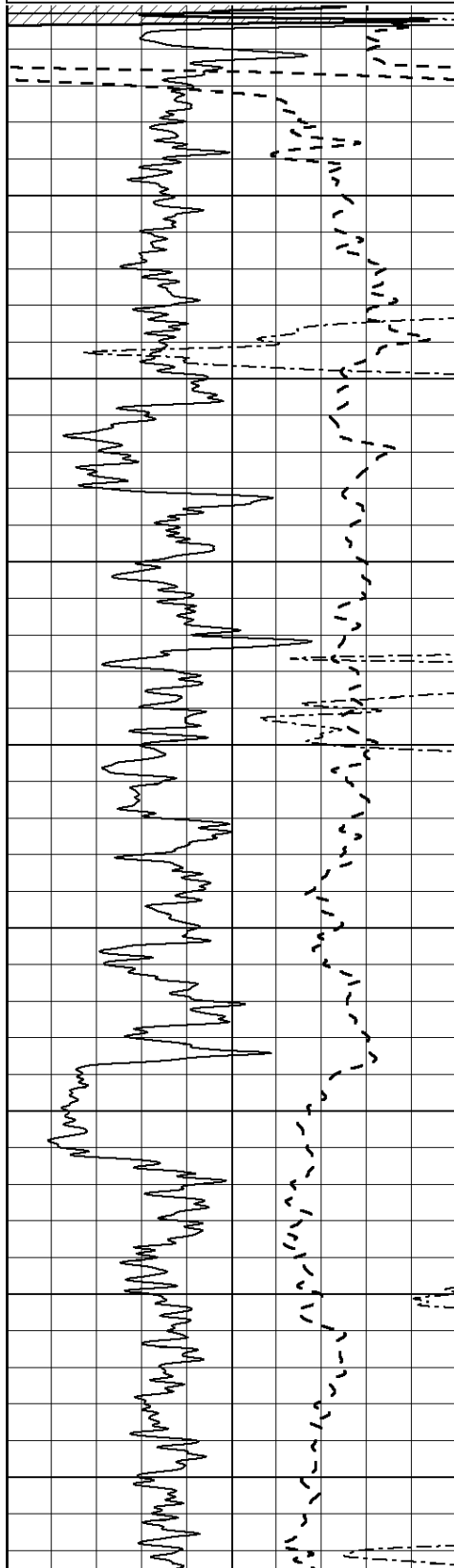
MAIN SECTION

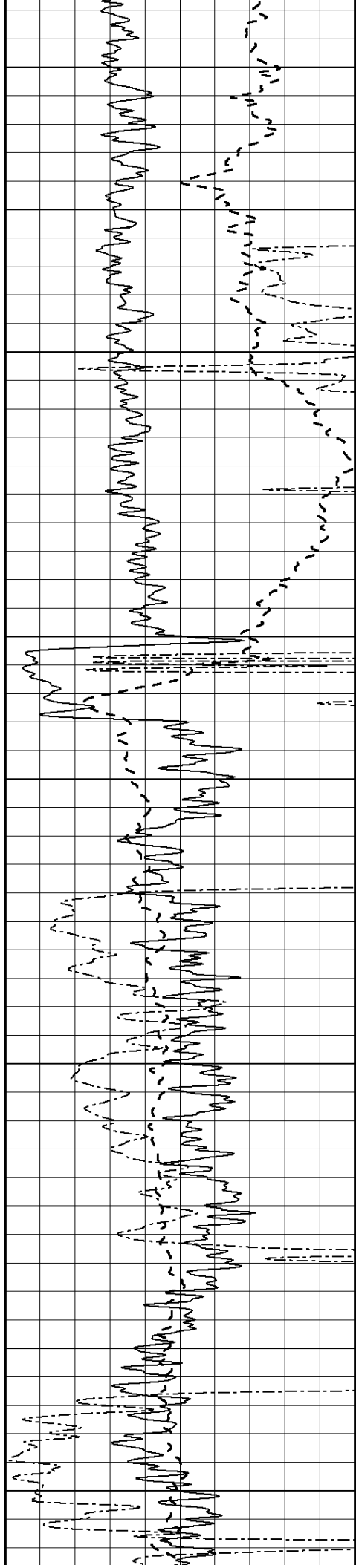
Database File: 3327ddn.db
 Dataset Pathname: pass3.6
 Presentation Format: dil2
 Dataset Creation: Sat Dec 29 09:51:51 2018
 Charted by: Depth in Feet scaled 1:600

0	Gamma Ray (GAPI)	150
-100	SP (mV)	100
0	RWA (Ohm-m)	1

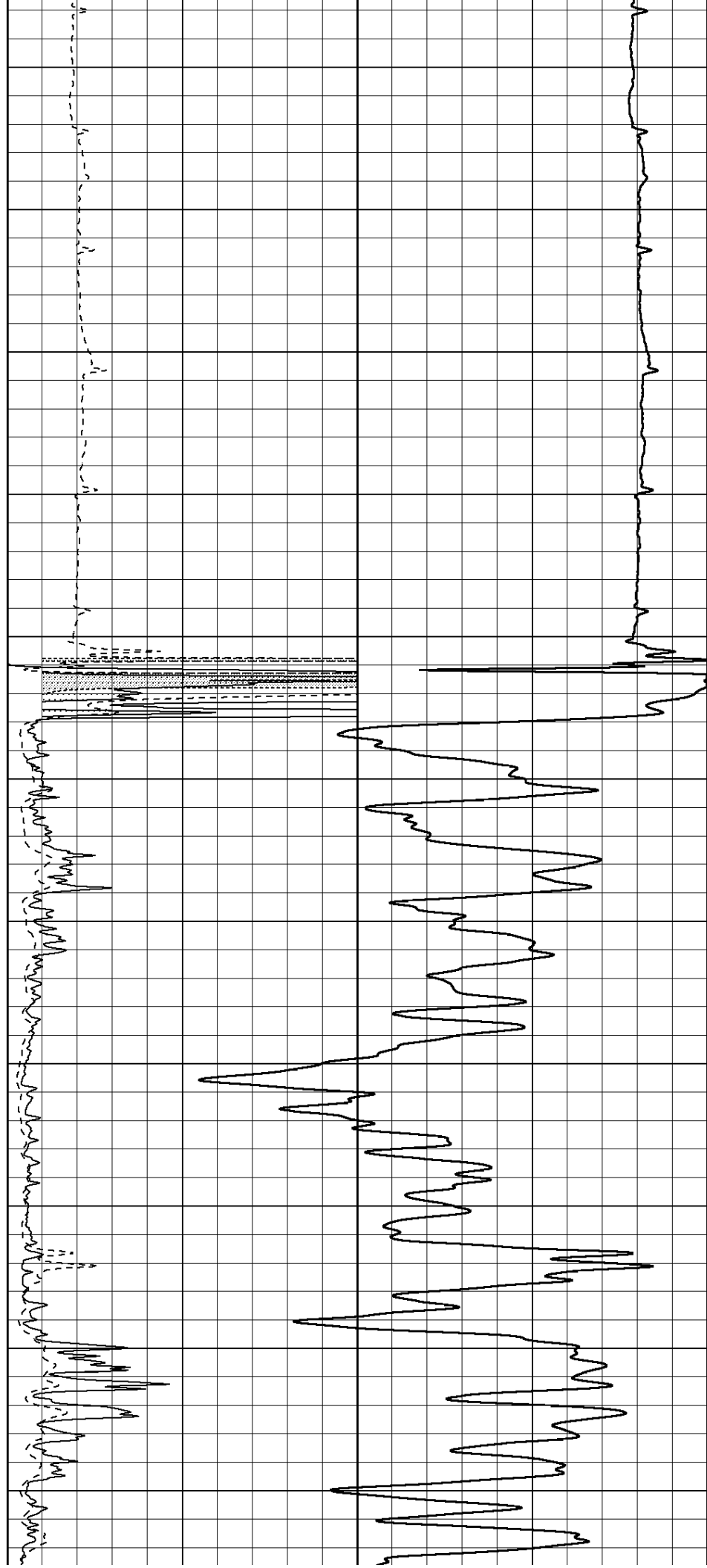
0	RLL3 (Ohm-m)	50
0	RILD (Ohm-m)	50
1000	CILD (mmho/m)	0

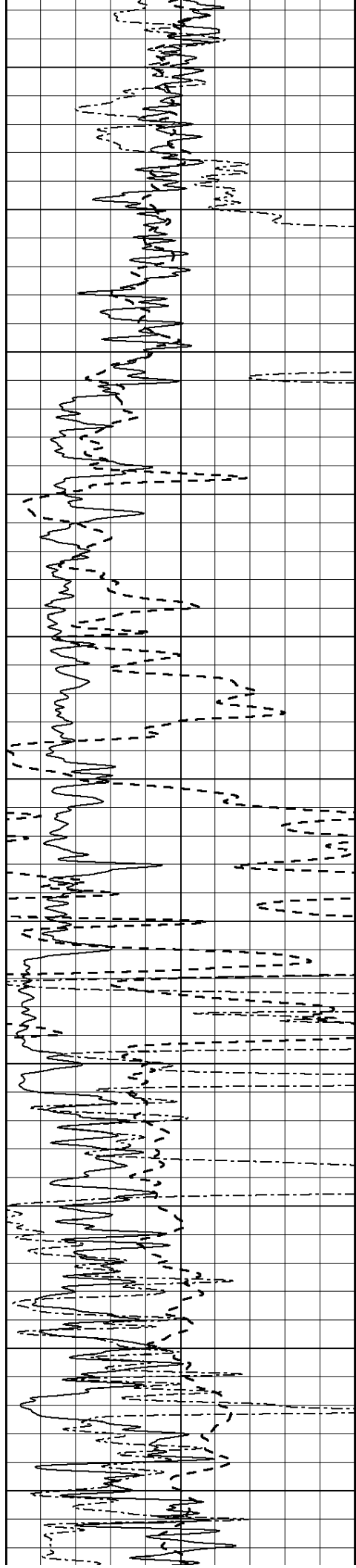
50	RILD X10 (Ohm-m)	500
50	RLL3 X10 (Ohm-m)	500



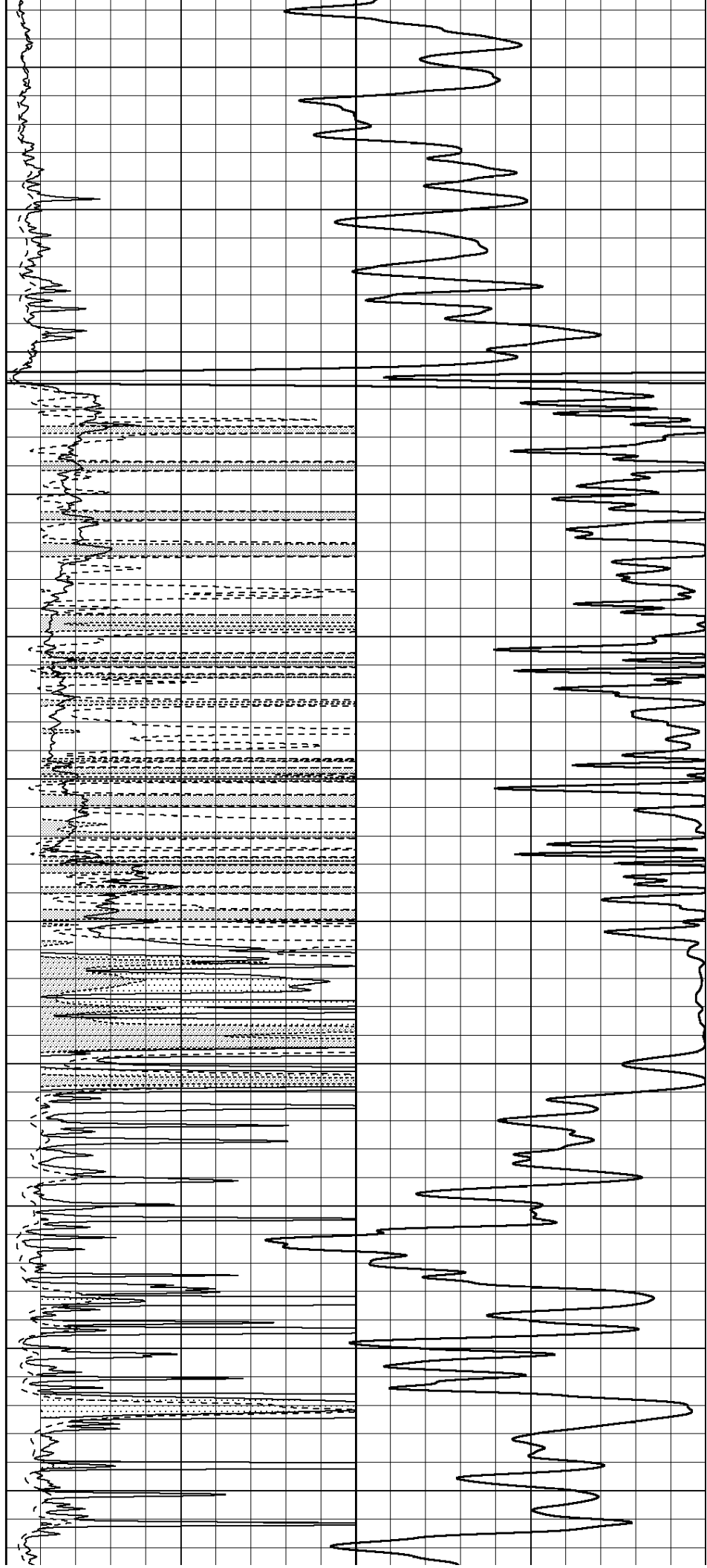


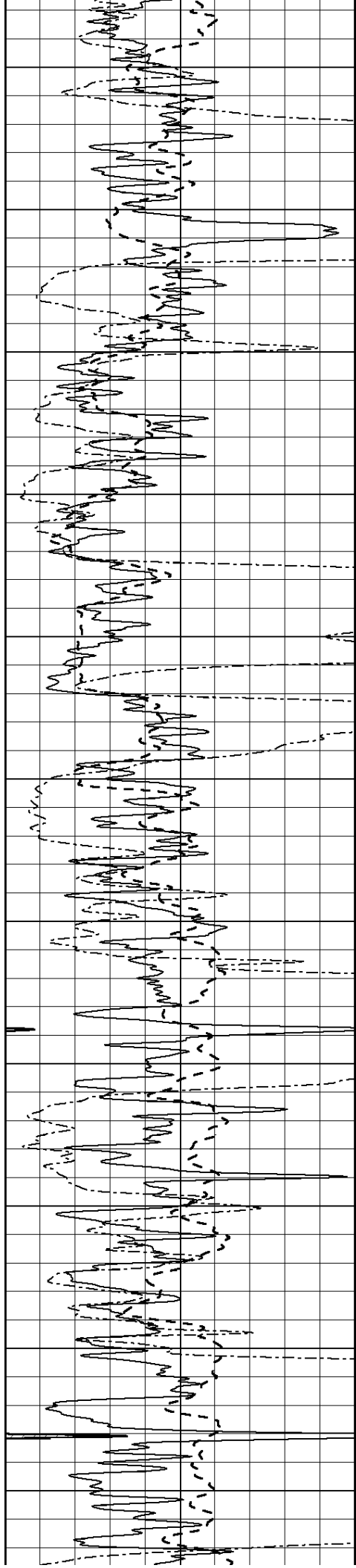
450
500
550
600
650
700
750
800
850
900
950





1000
1050
1100
1150
1200
1250
1300
1350
1400
1450
1500





1550

1600

1650

1700

1750

1800

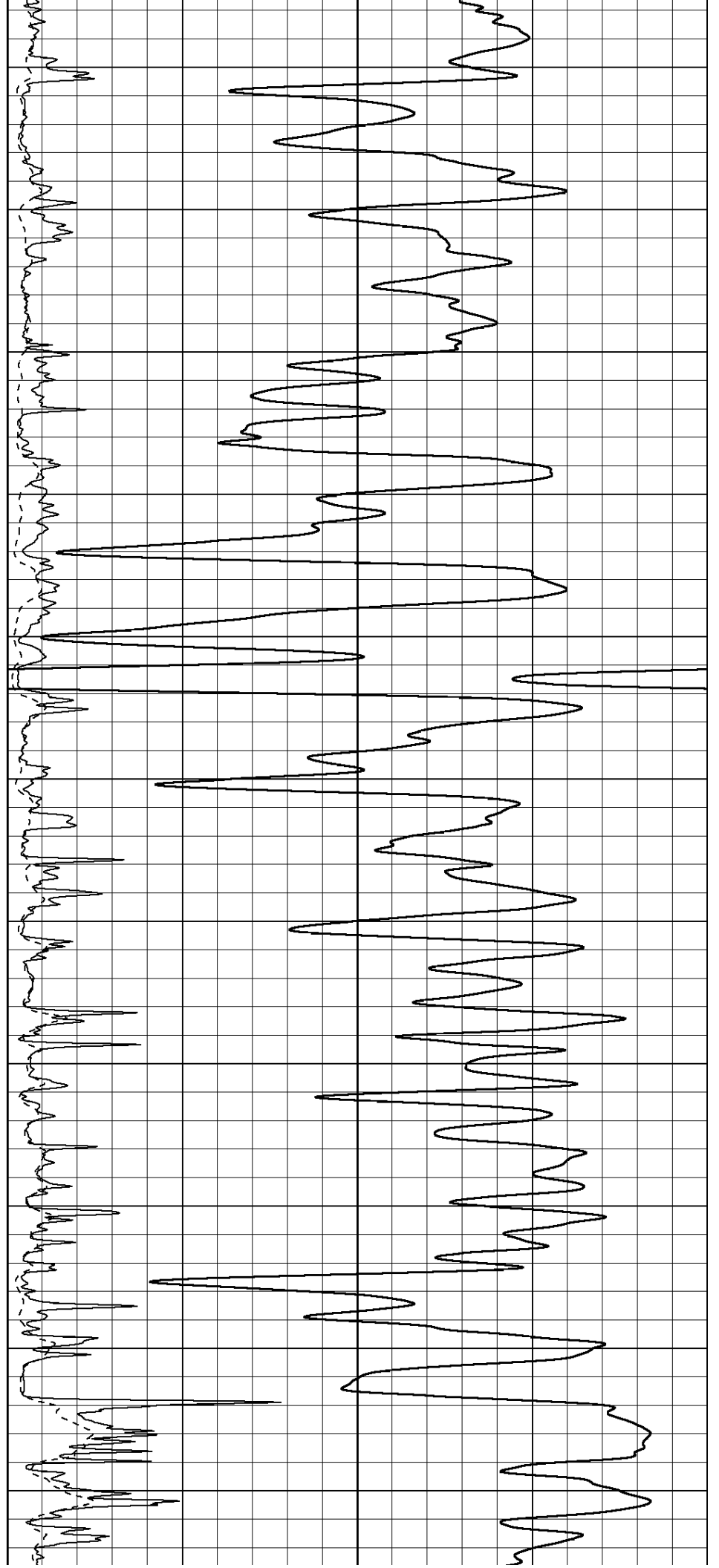
1850

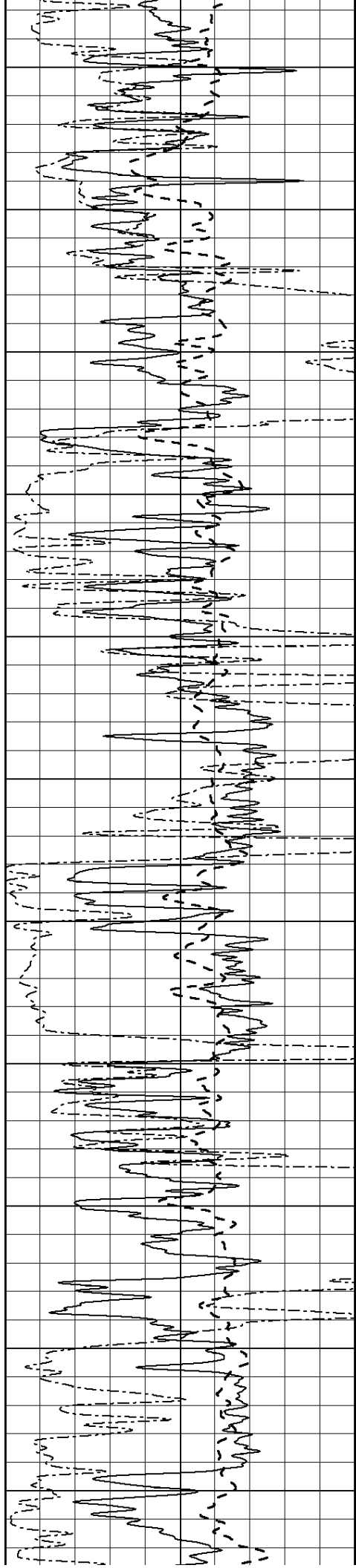
1900

1950

2000

2050





2100

2150

2200

2250

2300

2350

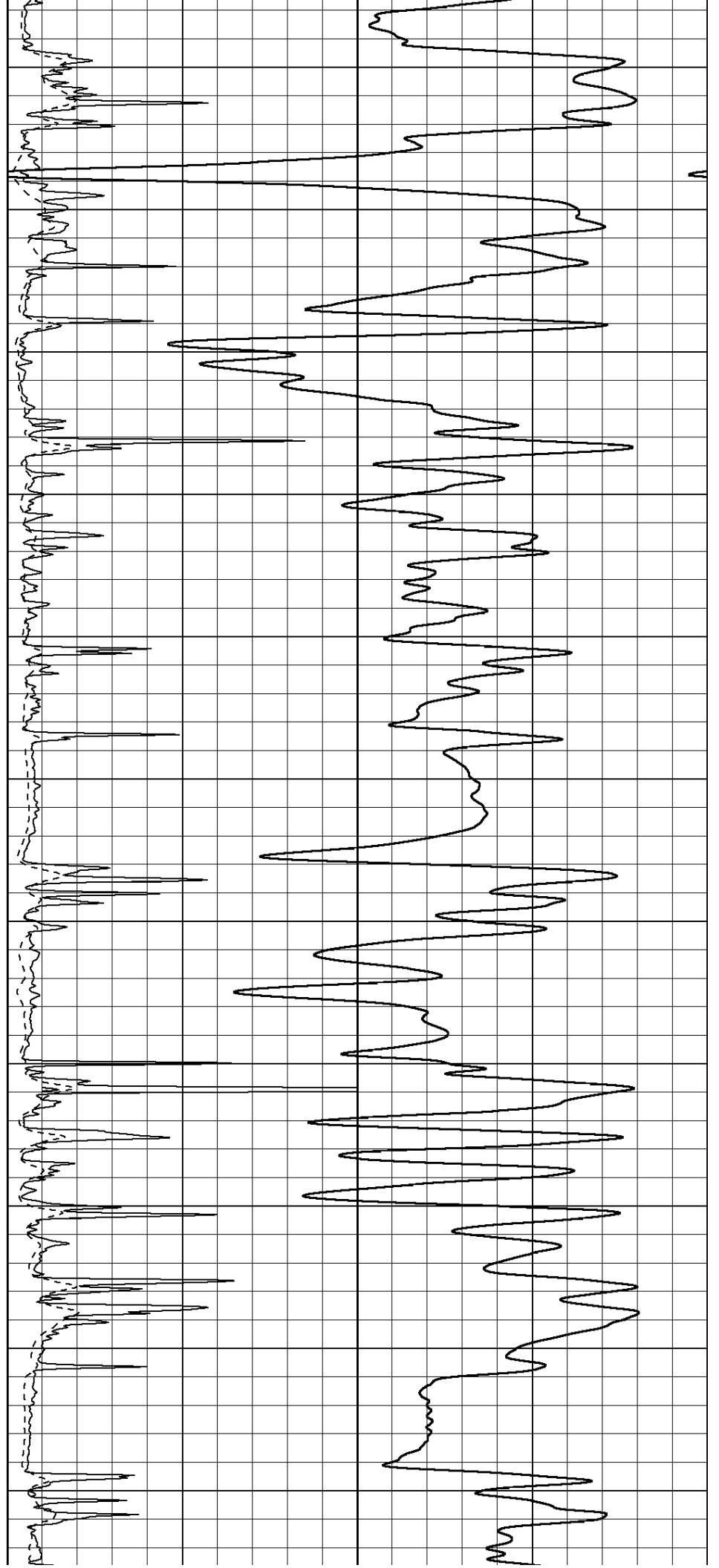
2400

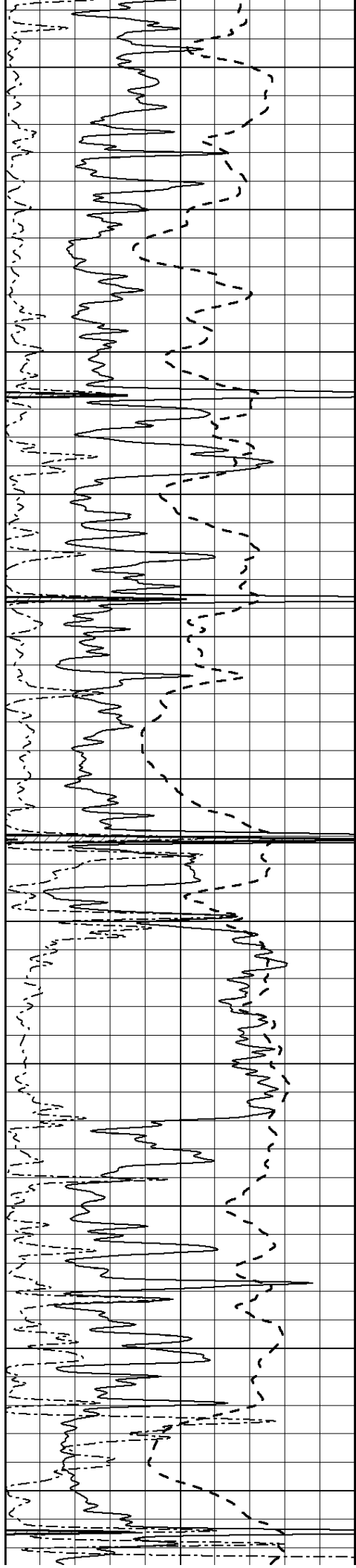
2450

2500

2550

2600





2650

2700

2750

2800

2850

2900

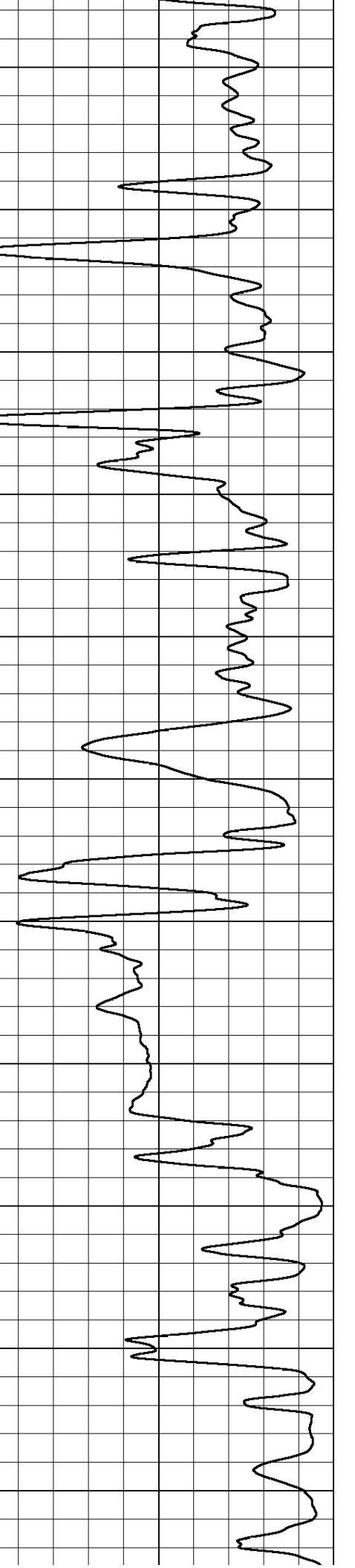
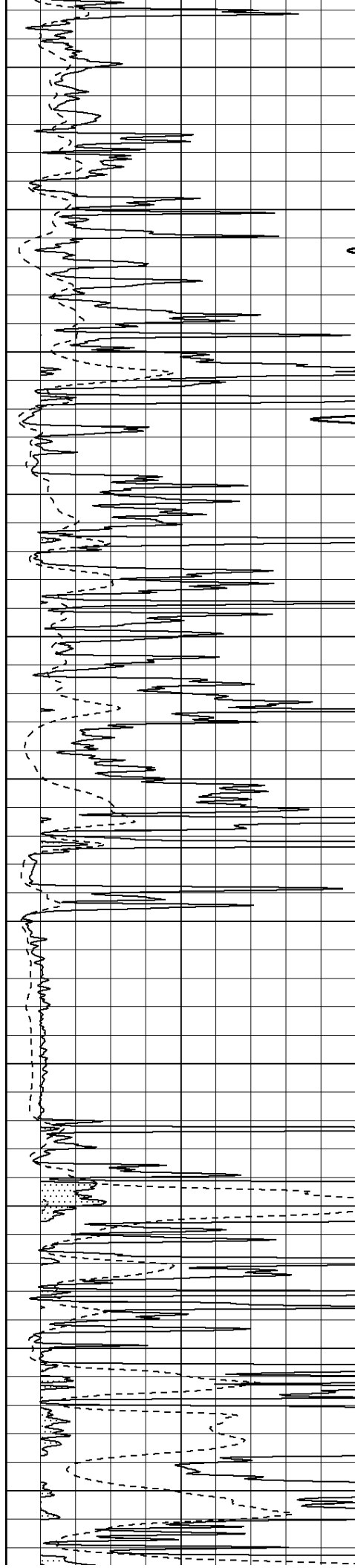
2950

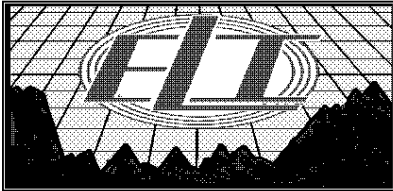
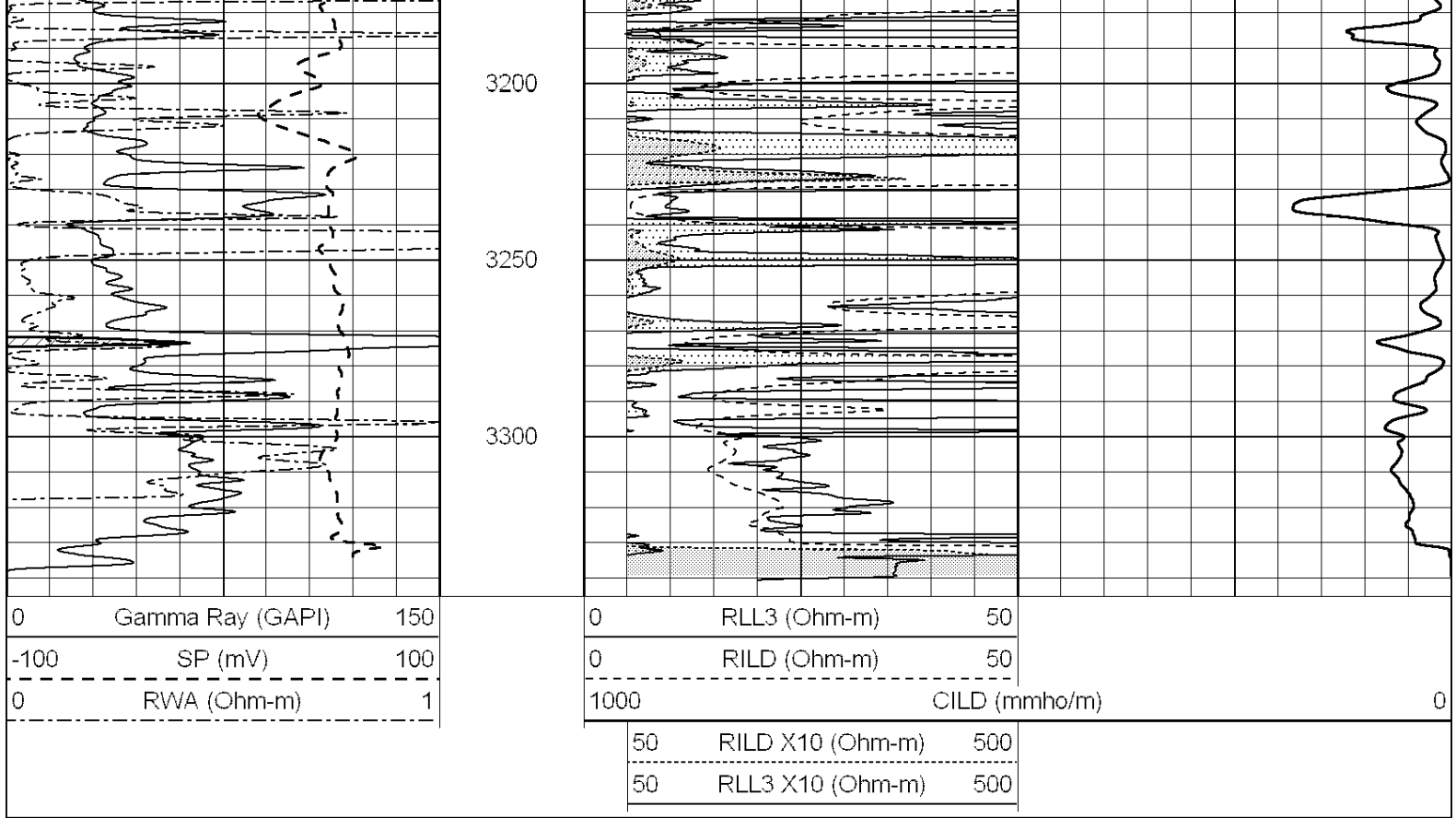
3000

3050

3100

3150

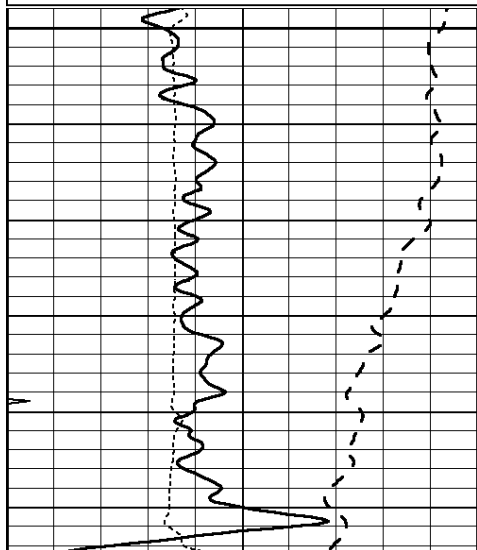




ANHYDRITE

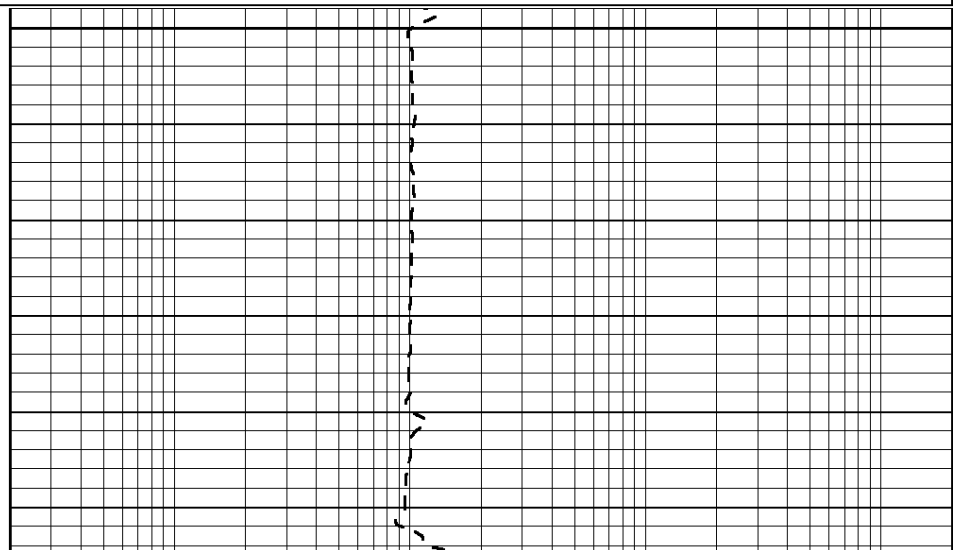
Database File: 3327ddn.db
 Dataset Pathname: pass3.5
 Presentation Format: _dil
 Dataset Creation: Sat Dec 29 09:06:18 2018 by Calc SOC 120430
 Charted by: Depth in Feet scaled 1:240

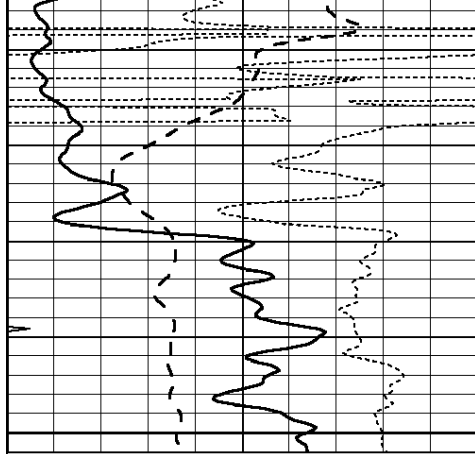
0	GAMMA RAY (GAPI)	150	0.2	SHALLOW GUARD (Ohm-m)	2000
-100	SP (mV)	100	0.2	DEEP INDUCTION (Ohm-m)	2000
-250	Rxo/Rt	50	0.2	MEDIUM INDUCTION (Ohm-m)	2000
0	MINMK	20			



600

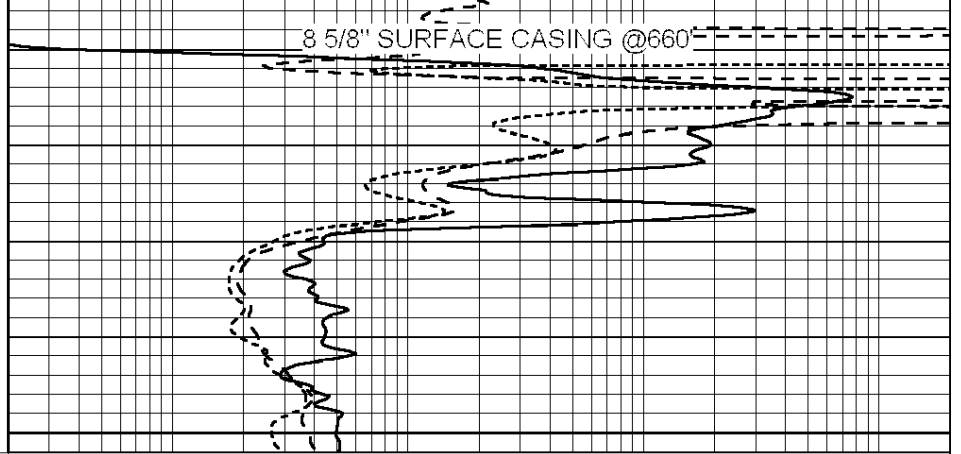
650



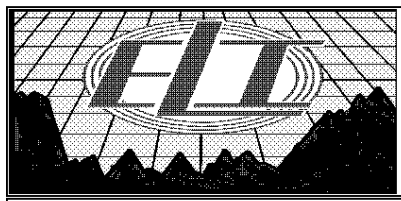


0	GAMMA RAY (GAPI)	150
-100	SP (mV)	100
-250	Rxo/Rt	50
0	MINMK	20

700



0.2	SHALLOW GUARD (Ohm-m)	2000
0.2	DEEP INDUCTION (Ohm-m)	2000
0.2	MEDIUM INDUCTION (Ohm-m)	2000

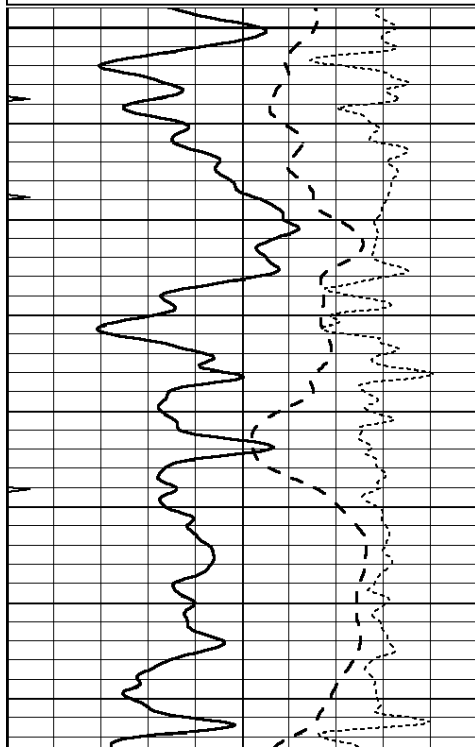


MAIN SECTION

Database File: 3327ddn.db
 Dataset Pathname: pass3.6
 Presentation Format: _dil
 Dataset Creation: Sat Dec 29 09:51:51 2018
 Charted by: Depth in Feet scaled 1:240

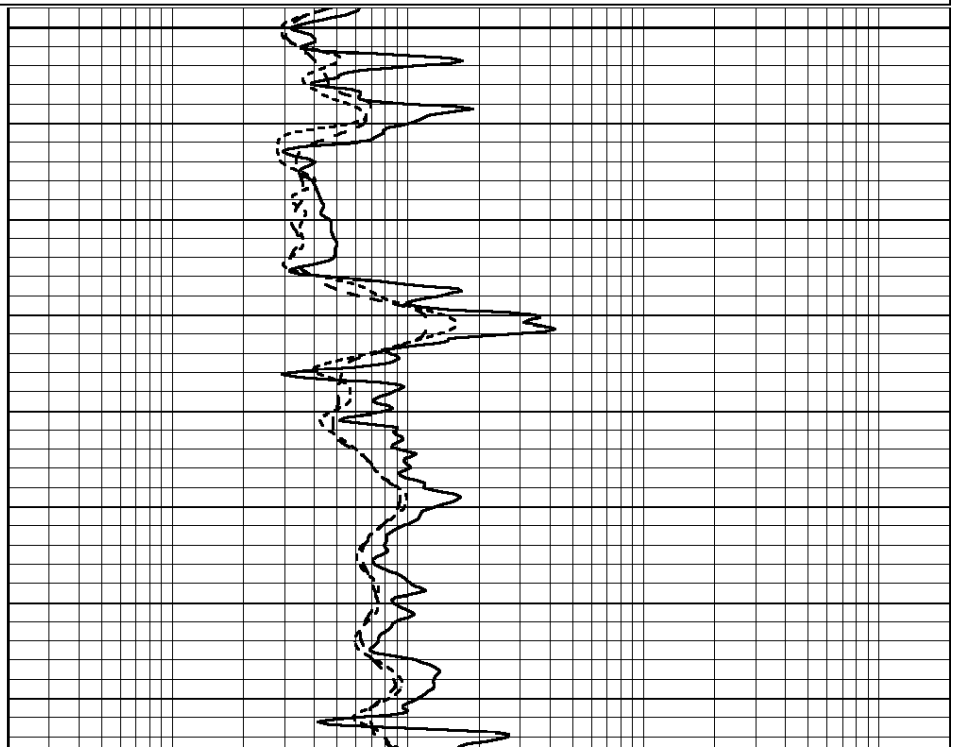
0	GAMMA RAY (GAPI)	150
-100	SP (mV)	100
-250	Rxo/Rt	50
0	MINMK	20

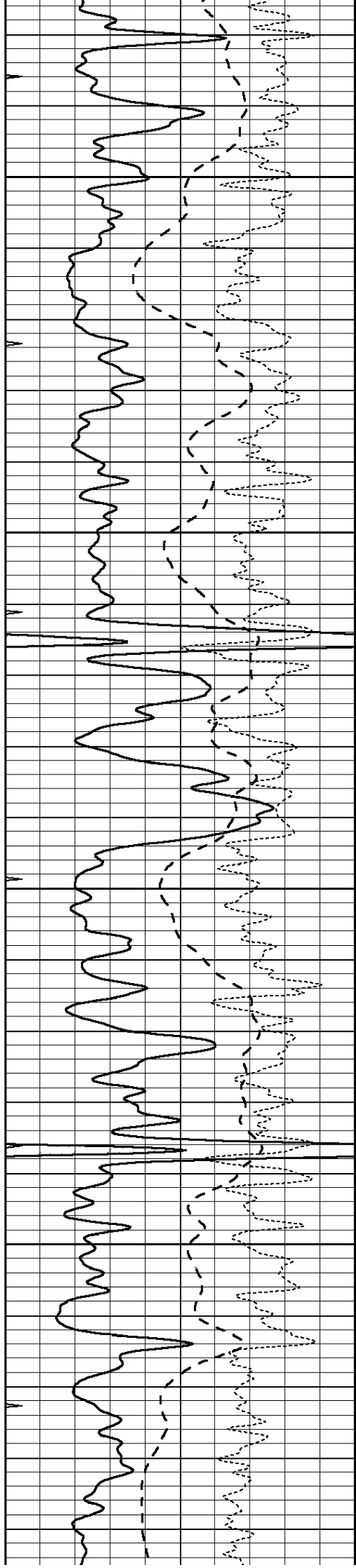
0.2	SHALLOW GUARD (Ohm-m)	2000
0.2	DEEP INDUCTION (Ohm-m)	2000
0.2	MEDIUM INDUCTION (Ohm-m)	2000



2600

2650



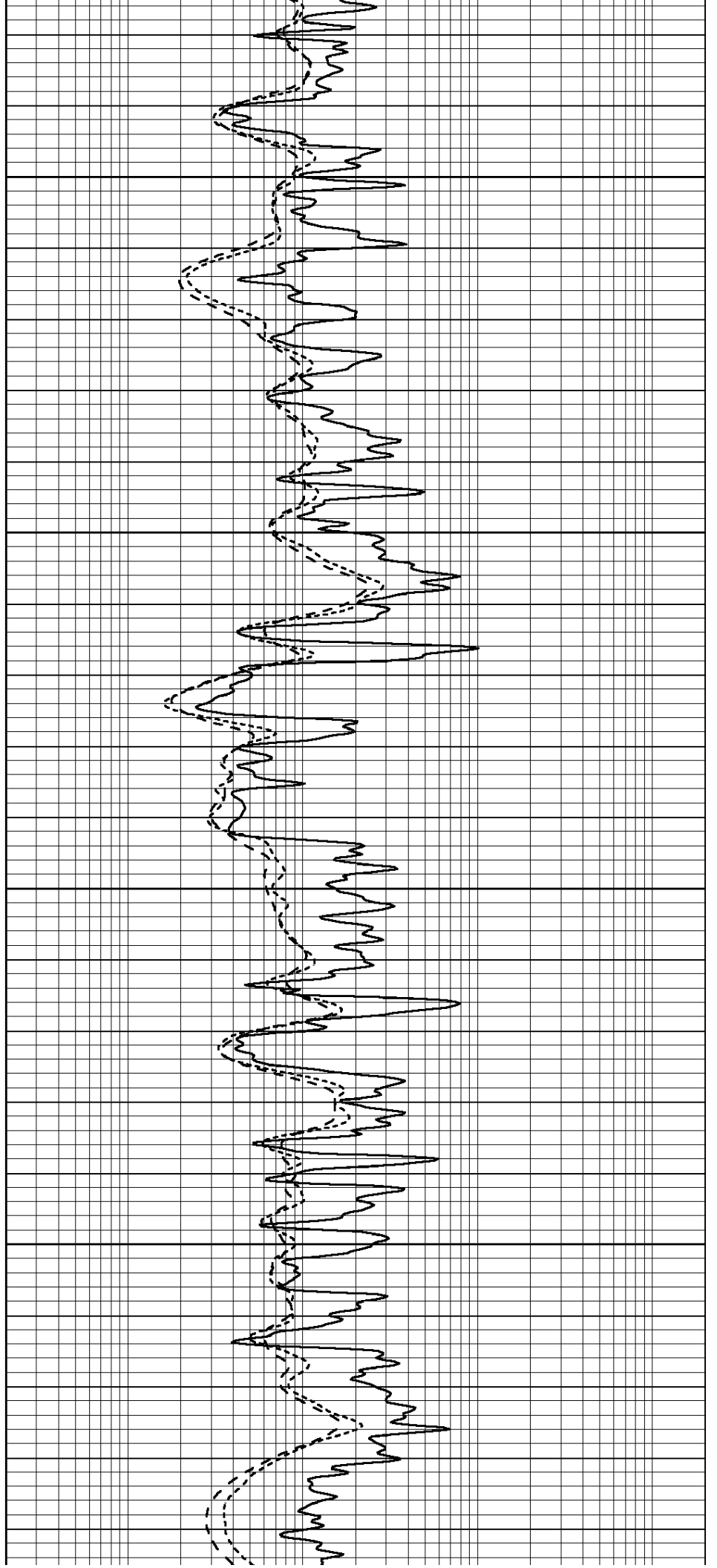


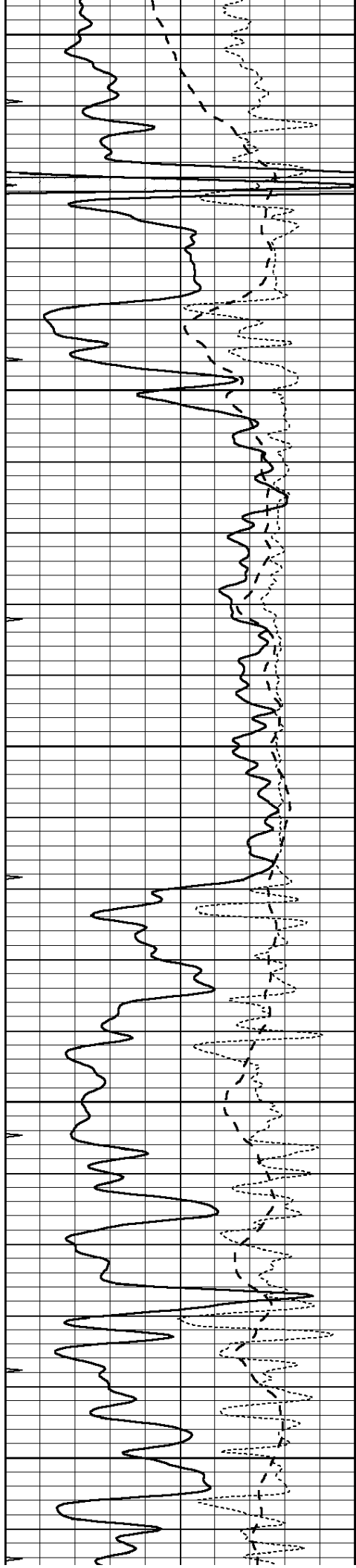
2700

2750

2800

2850





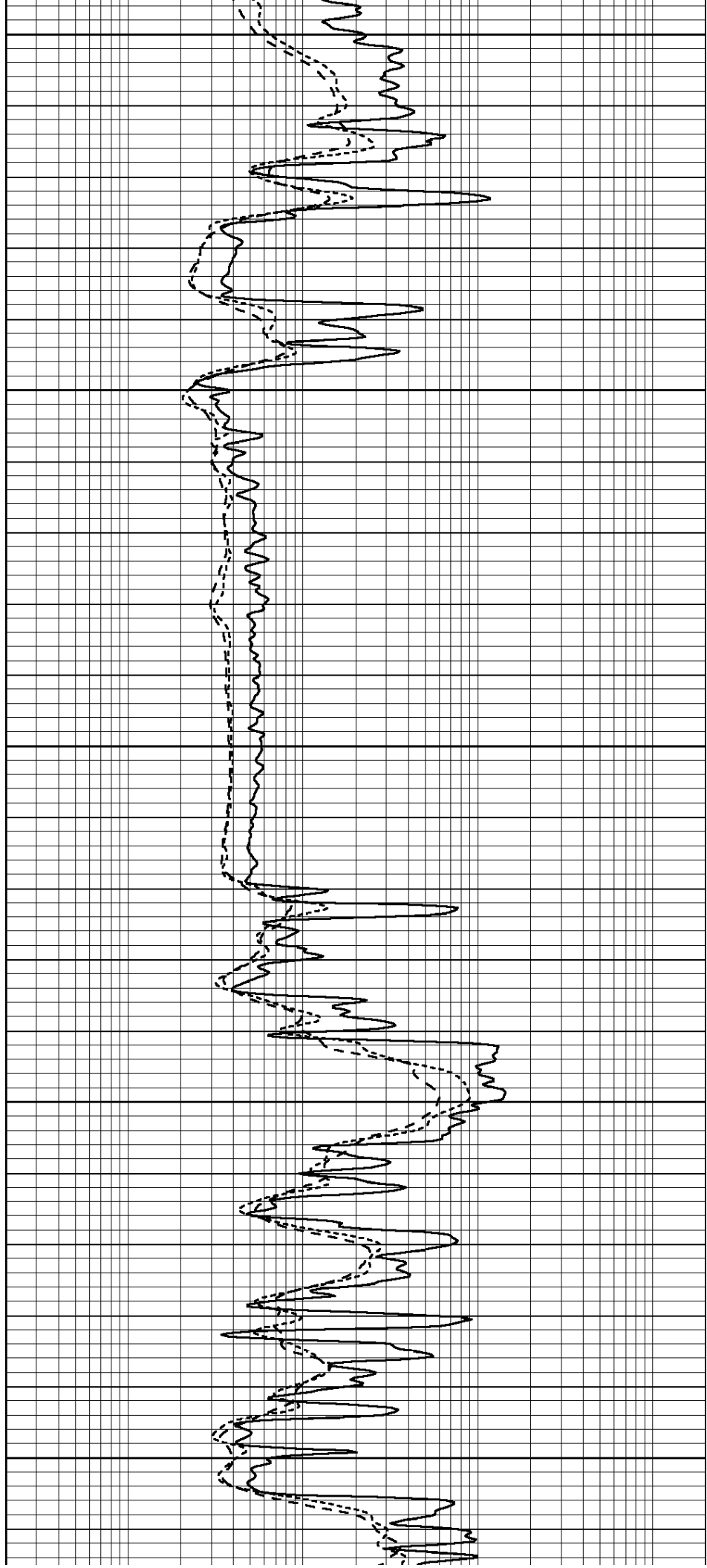
2900

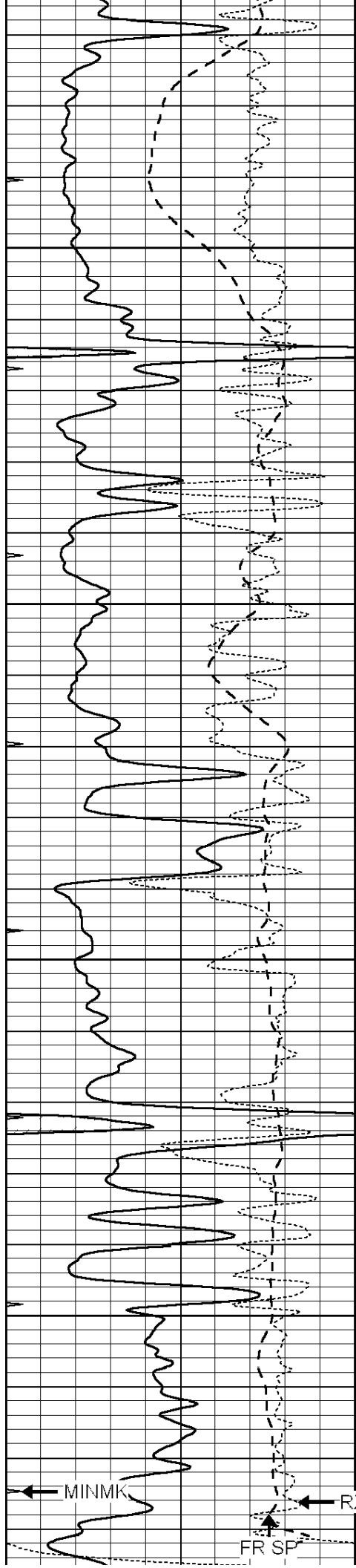
2950

3000

3050

3100





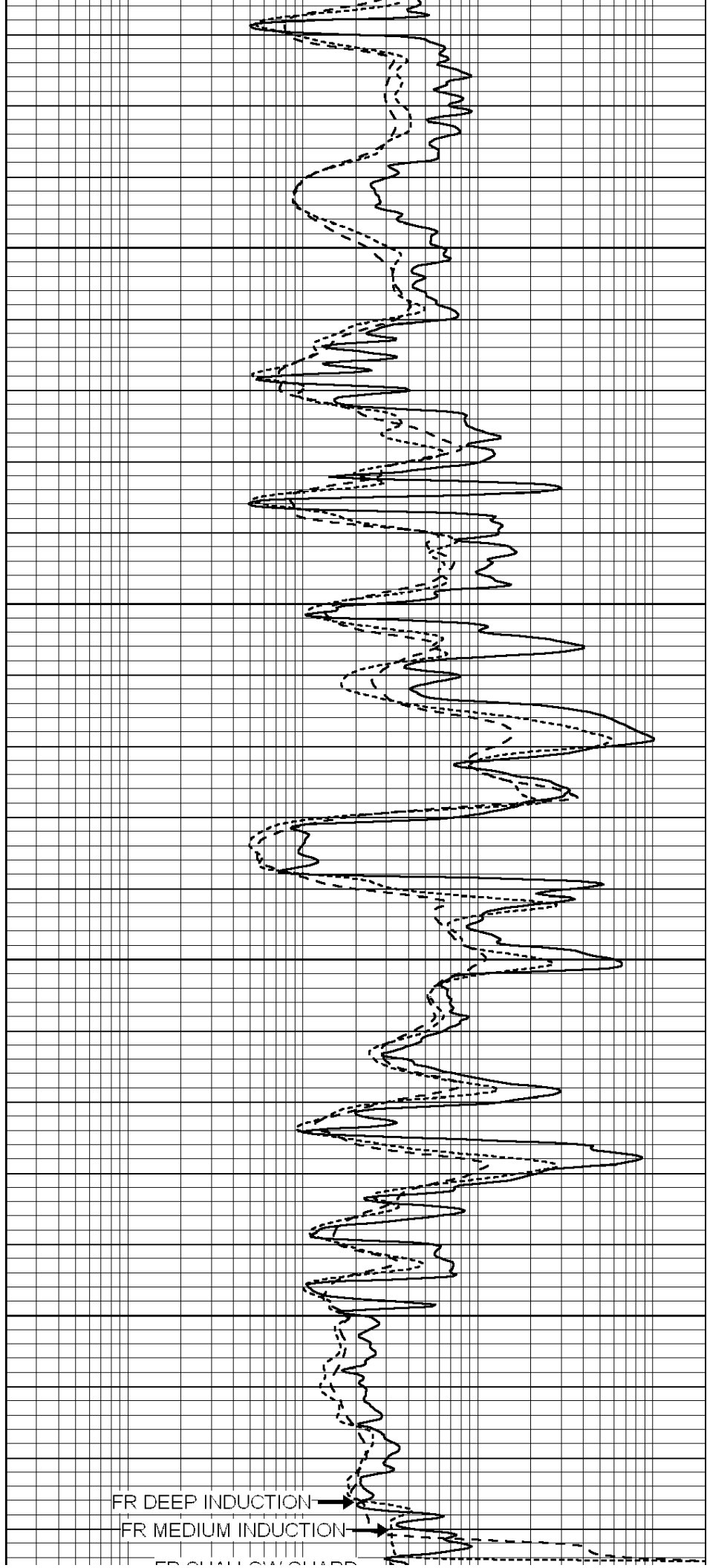
3150

3200

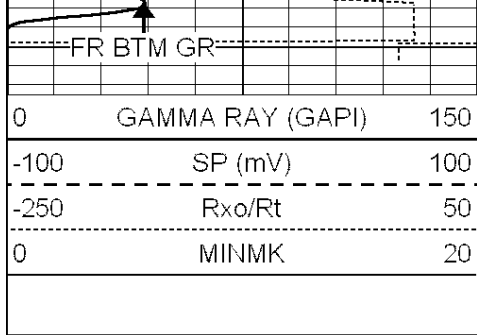
3250

3300

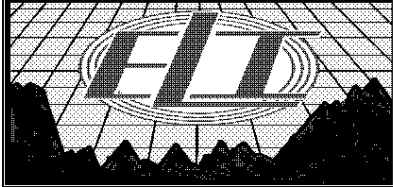
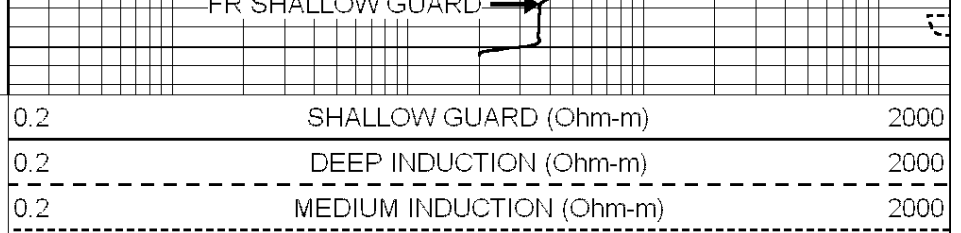
← MINMK
← RXO/RT
FR SP



FR DEEP INDUCTION
FR MEDIUM INDUCTION
FR SHALLOW QUAD

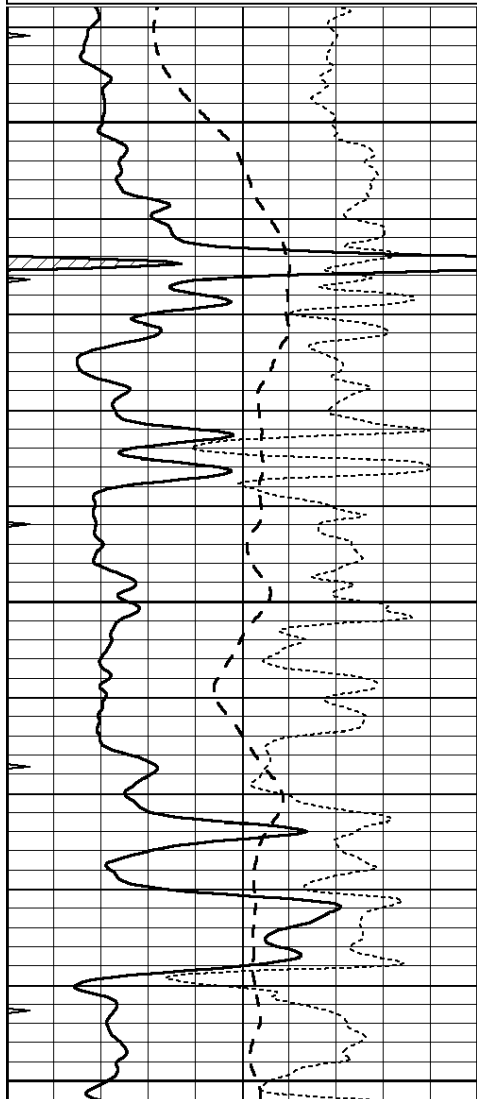
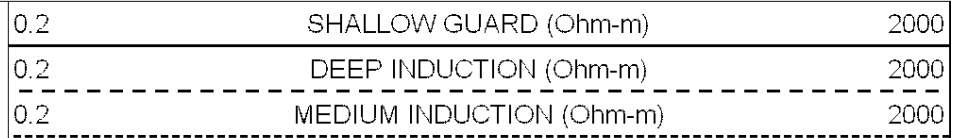
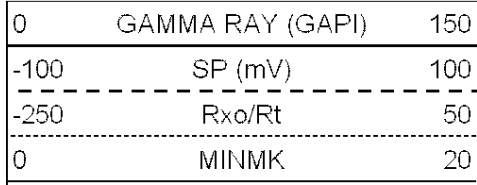


LTD 3338



REPEAT SECTION

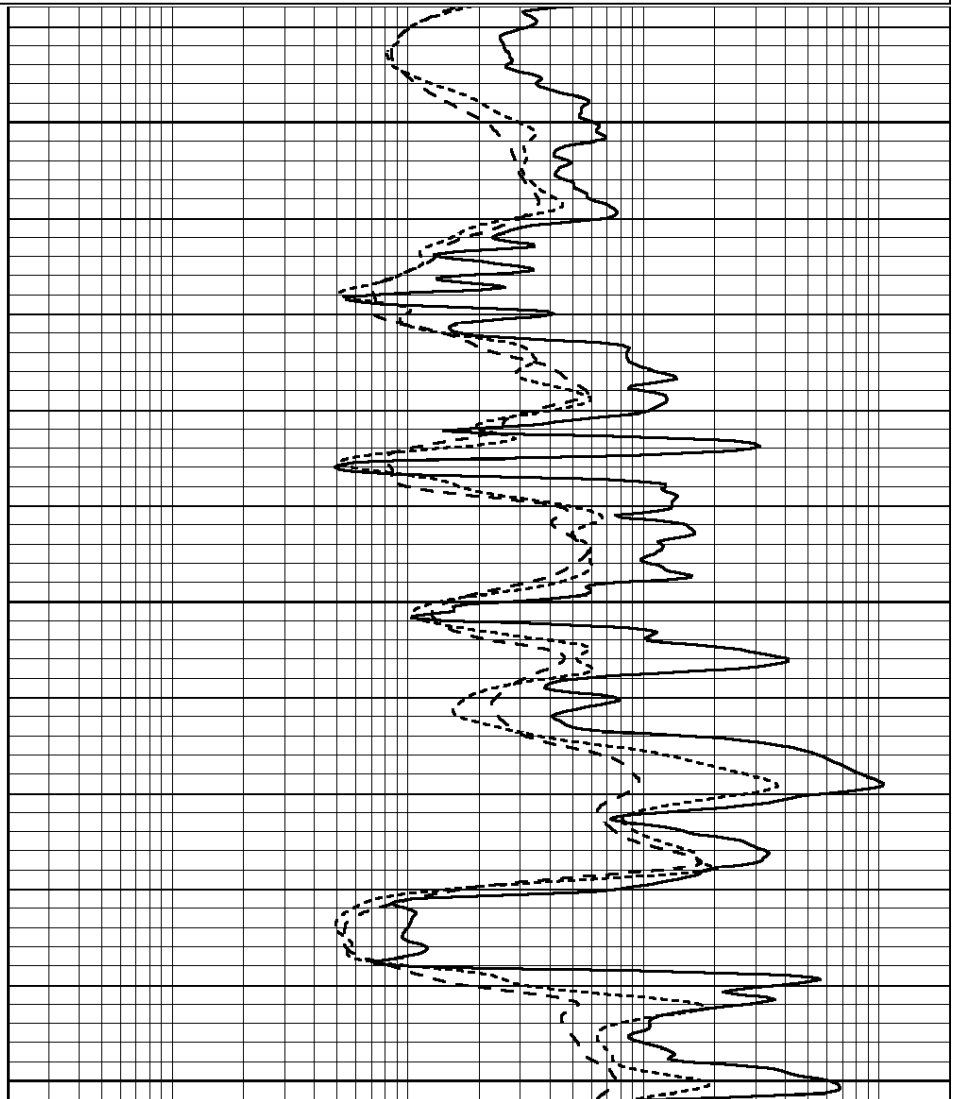
Database File: 3327ddn.db
 Dataset Pathname: pass2.2
 Presentation Format: _dil
 Dataset Creation: Sat Dec 29 08:19:15 2018 by Calc SOC 120430
 Charted by: Depth in Feet scaled 1:240

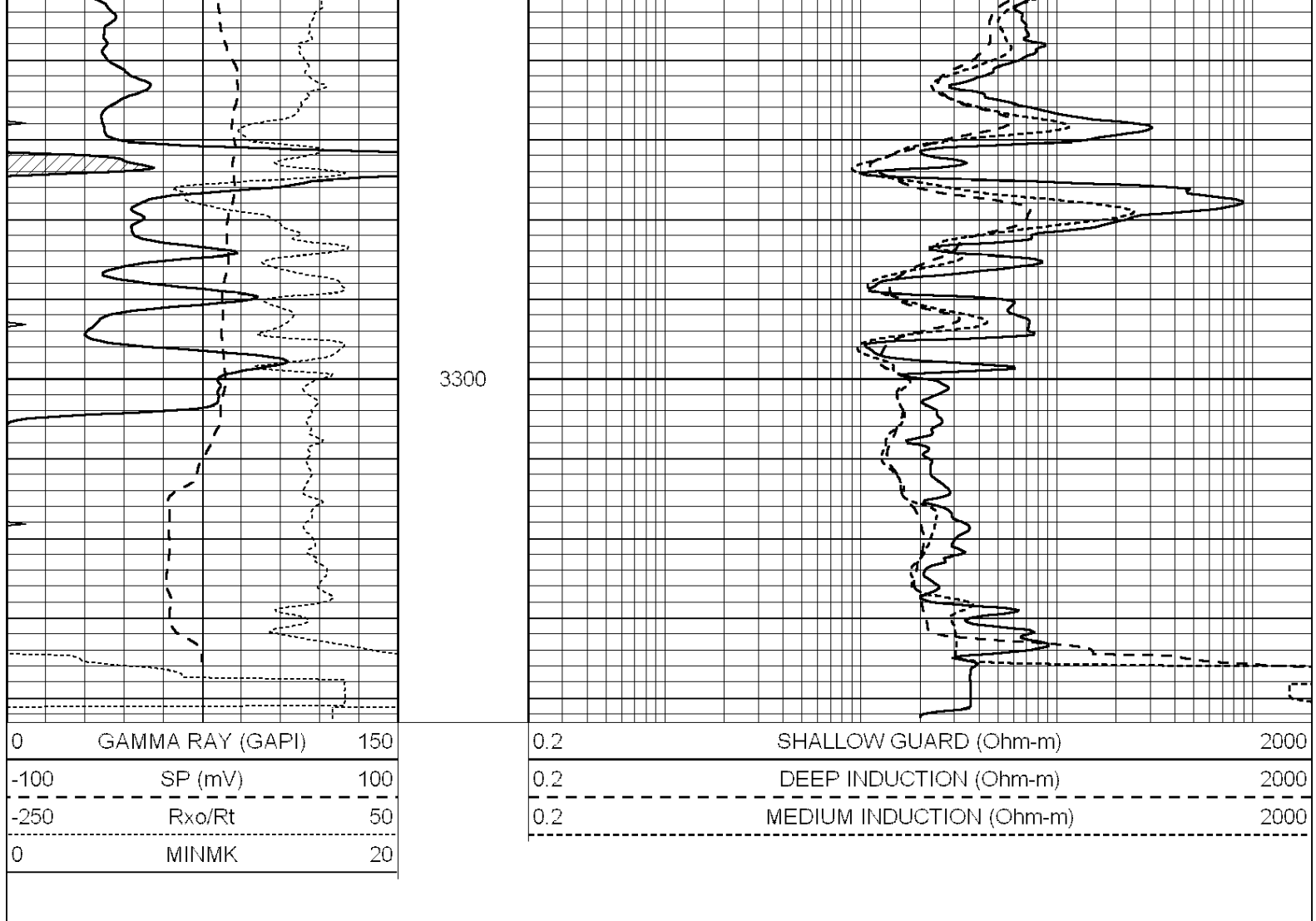


3150

3200

3250





Calibration Report

Database File: 1598ddn.db
 Dataset Pathname: pass4
 Dataset Creation: Wed Aug 30 02:13:00 2017 by Log SOC 120430

Dual Induction Calibration Report

Serial-Model: PROBE7-DILG
 Surface Cal Performed: Wed Aug 30 00:06:33 2017
 Downhole Cal Performed: Mon Jul 28 12:02:56 2008
 After Survey Verification Performed: Mon Jul 28 12:02:56 2008

Surface Calibration

Loop:	Readings				References		Results	
	Air	Loop	V		Air	Loop	m	b
Deep	-0.014	0.629	V	0.000	400.000	mmho/m	620.000	0.000
Medium	0.039	0.728	V	0.000	464.000	mmho/m	675.000	-44.000
Internal:	Zero	Cal		Zero	Cal		m	b
Deep	0.011	0.610	V	0.000	400.000	mmho/m	667.135	-7.256
Medium	0.005	0.712	V	0.000	464.000	mmho/m	655.677	-3.102

Downhole Calibration

	Readings				References		Results	
	Zero	Cal			Zero	Cal	m'	b'
Deep	0.000	0.000	mmho/m	14.508	388.384	mmho/m	1.000	0.000

Medium	0.000	0.000	mmho/m	166.367	504.400	mmho/m	1.000	0.000
LL3		7.500	V		1400.000	Ohm-m		
		0.000	V		20.000	Ohm-m		
		-7.200	V		4000.000	mmho-m		

After Survey Verification								
	Readings			Targets			Results	
	Zero	Cal		Zero	Cal		m'	b'
Deep	0.000	0.000	mmho/m	0.000	0.000	mmho/m	0.000	0.000
Medium	0.000	0.000	mmho/m	0.000	0.000	mmho/m	0.000	0.000
LL3		1.000	Ohm-m		1.000	Ohm-m		
		0.000	Ohm-m		0.000	Ohm-m		
		1.000	mmho-m		1.000	mmho-m		

Litho Density Calibration Report
Serial: 002 Model: PRB

Master Calibration		Performed Mon Aug 21 11:27:42 2017				
	Background	Magnesium	Aluminum	Sandstone		
Window 1	837.1	10632.5	2945.1	12110.1	cps	
Window 2	772.0	9117.4	2570.1	10197.3	cps	
Window 3	631.7	4669.0	1481.9	5042.9	cps	
Window 4	187.0	187.5	185.9	189.9	cps	
Long Space	0.0	8345.4	1798.1	9425.3	cps	
Short Space	1.1	1927.9	1285.9	2050.2	cps	
Rho		1.7100	2.5960	1.3800	g/cc	
Pe		0.0000	2.5700	1.5500		
Rib Angle	: 45.2	Rib Slope	: 1.008	Density/Spine Ratio	: 0.558	
Spine Angle	: 75.2	Spine Slope	: 3.790	Spine Intercept	: -19.6	

Before Survey Verification		Performed Wed Dec 31 18:00:00 1969				
Window 1	0.0	0.0	0.0	0.0	cps	
Window 2	0.0	0.0	0.0	0.0	cps	
Window 3	0.0	0.0	0.0	0.0	cps	
Window 4	0.0	0.0	0.0	0.0	cps	
Long Space	0.0	0.0	0.0	0.0	cps	
Short Space	0.0	0.0	0.0	0.0	cps	
Measured Rho		0.0000	0.0000	0.0000	g/cc	
Measured Correction		0.0000	0.0000	0.0000	g/cc	
Measured Pe			0.0000	0.0000		

After Survey Verification		Performed Wed Dec 31 18:00:00 1969				
Window 1	0.0	0.0	0.0	0.0	cps	
Window 2	0.0	0.0	0.0	0.0	cps	
Window 3	0.0	0.0	0.0	0.0	cps	
Window 4	0.0	0.0	0.0	0.0	cps	
Long Space	0.0	0.0	0.0	0.0	cps	
Short Space	0.0	0.0	0.0	0.0	cps	
Measured Rho		0.0000	0.0000	0.0000	g/cc	
Measured Correction		0.0000	0.0000	0.0000	g/cc	
Measured Pe			0.0000	0.0000		

Compensated Neutron Calibration Report

Serial Number:
Tool Model:

070808
Probe

PRE-SURVEY VERIFICATION

Detector	Readings	Measured	Target
Short Space	cps		
Long Space	cps	pu	pu

POST-SURVEY VERIFICATION

Detector	Readings	Measured	Target
Short Space	cps		
Long Space	cps	pu	pu

Gamma Ray Calibration Report

Serial Number:	070558	
Tool Model:	OPEN_GR	
Performed:	Wed May 31 00:09:32 2017	
Calibrator Value:	1.0	GAPI
Background Reading:	0.0	cps
Calibrator Reading:	1.0	cps
Sensitivity:	0.2800	GAPI/cps