



**COMPENSATED  
DENSITY / NEUTRON  
LOG**

Company JOHN ROY EVANS OIL COMPANY, LLC.  
 Well PENKA #26-1  
 Field SNOW WHITE NORTH  
 County BARTON  
 State KANSAS

Company JOHN ROY EVANS OIL COMPANY, LLC.  
 Well PENKA #26-1  
 Field SNOW WHITE NORTH  
 County BARTON State KANSAS

Location: API # : 15-009-26231-0000  
 1840' FSL & 975' FEL  
 NE - SW - NE - SE  
 Permanent Datum GROUND LEVEL Elevation 1807  
 Log Measured From KELLY BUSHING 7' A.G.L.  
 Drilling Measured From KELLY BUSHING  
 SEC 26 TWP 17S RGE 12W  
 Other Services  
 DIL/MEL  
 SONIC  
 Elevation  
 K.B. 1814  
 D.F. 1812  
 G.L. 1807

Date	12/29/18		
Run Number	ONE		
Depth Driller	3340		
Depth Logger	3338		
Bottom Logged Interval	3314		
Top Log Interval	2600		
Casing Driller	8 5/8" @ 660'		
Casing Logger	660		
Bit Size	7 7/8"		
Type Fluid in Hole	CHEMICAL MUD	CHLORIDES 8,600 PPM	
Density / Viscosity	8.9/44		
pH / Fluid Loss	10.0/7.6		
Source of Sample	FLOWLINE		
Rim @ Meas. Temp	.500 @ 40F		
Rmf @ Meas. Temp	.375 @ 40F		
Rmc @ Meas. Temp	.600 @ 40F		
Source of Rmf / Rmc	MEASUREMENT		
Rim @ BHT	.182 @ 110F		
Time Circulation Stopped	8 HOURS		
Time Logger on Bottom	7:45 A.M.		
Maximum Recorded Temperature	110F		
Equipment Number	922339		
Location	HAYS, KANSAS		
Recorded By	JEFF LUEBBERS		
Witnessed By	WYATT URBAN	GARY KIRMER	

<<< Fold Here >>>

All interpretations are opinions based on inferences from electrical or other measurements and we cannot and do not guarantee the accuracy or correctness of any interpretation, and we shall not, except in the case of gross or willful negligence on our part, be liable or responsible for any loss, costs, damages, or expenses incurred or sustained by anyone resulting from any interpretation made by any of our officers, agents or employees. These interpretations are also subject to our general terms and conditions set out in our current Price Schedule.

Comments

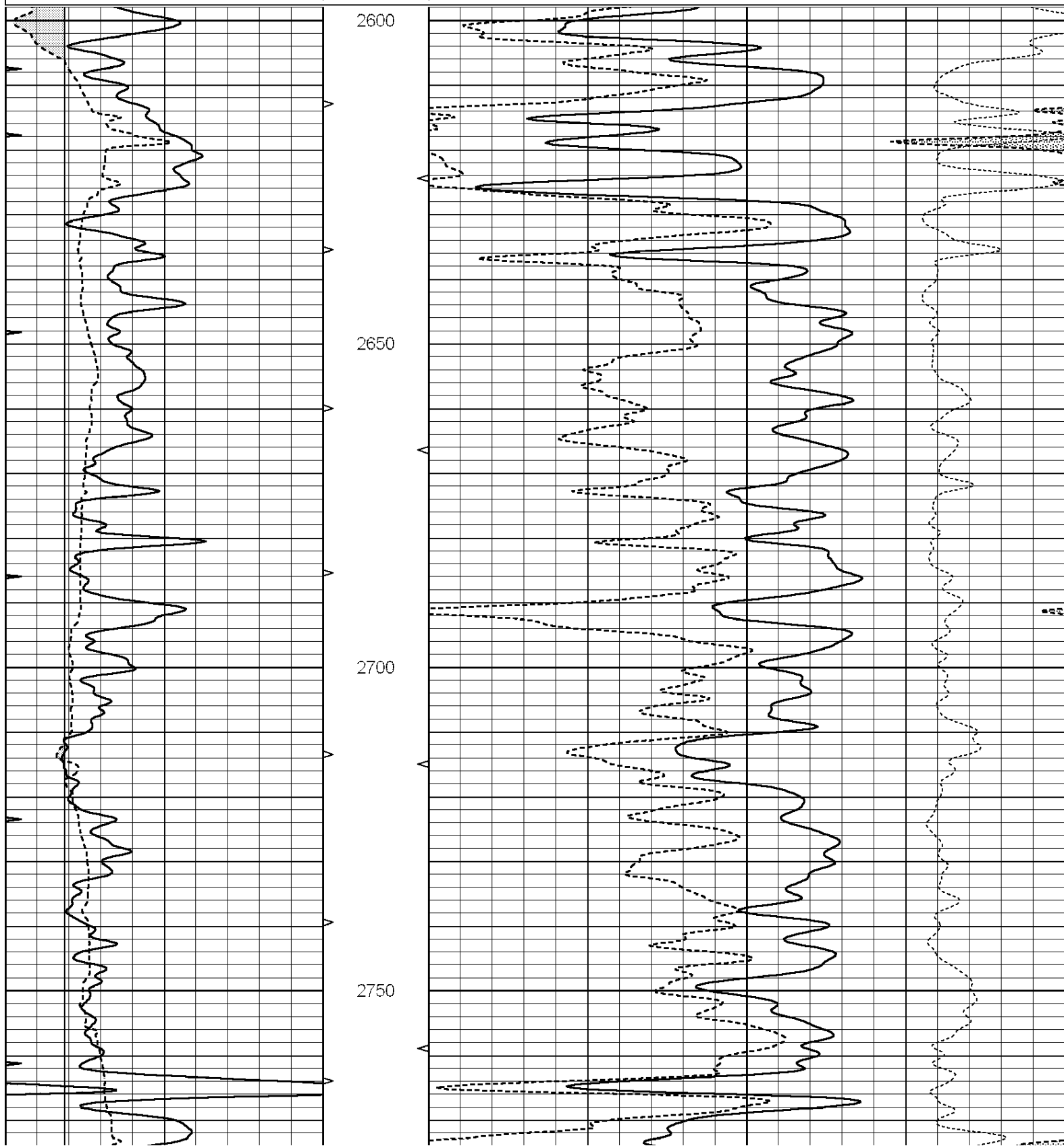
THANK YOU FOR USING ELI WIRELINE HAYS, KANSAS (785) 628-6395  
 DIRECTIONS  
 ODIN, KS., 1 1/2S. ON BLKTOP, W. INTO

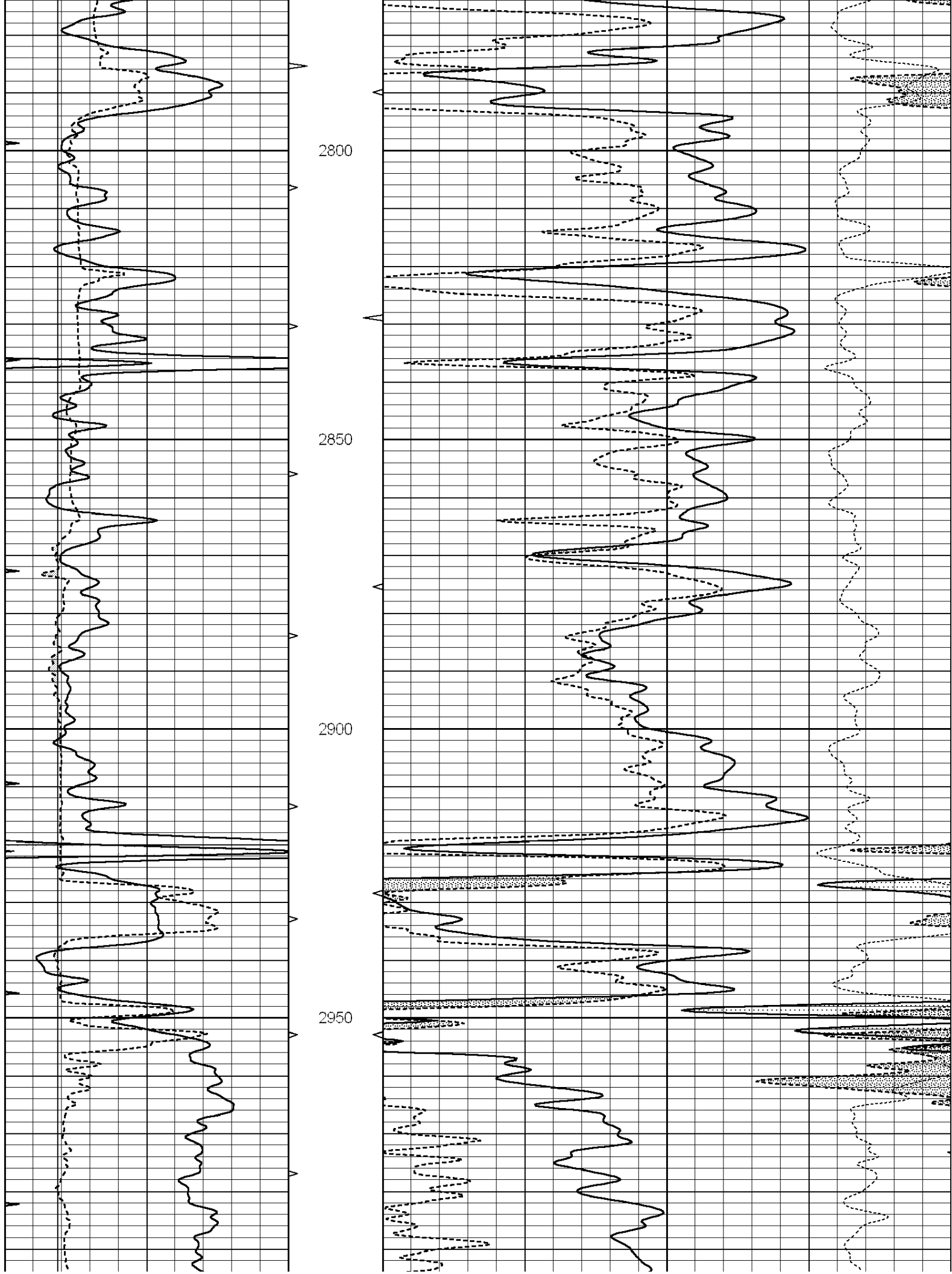


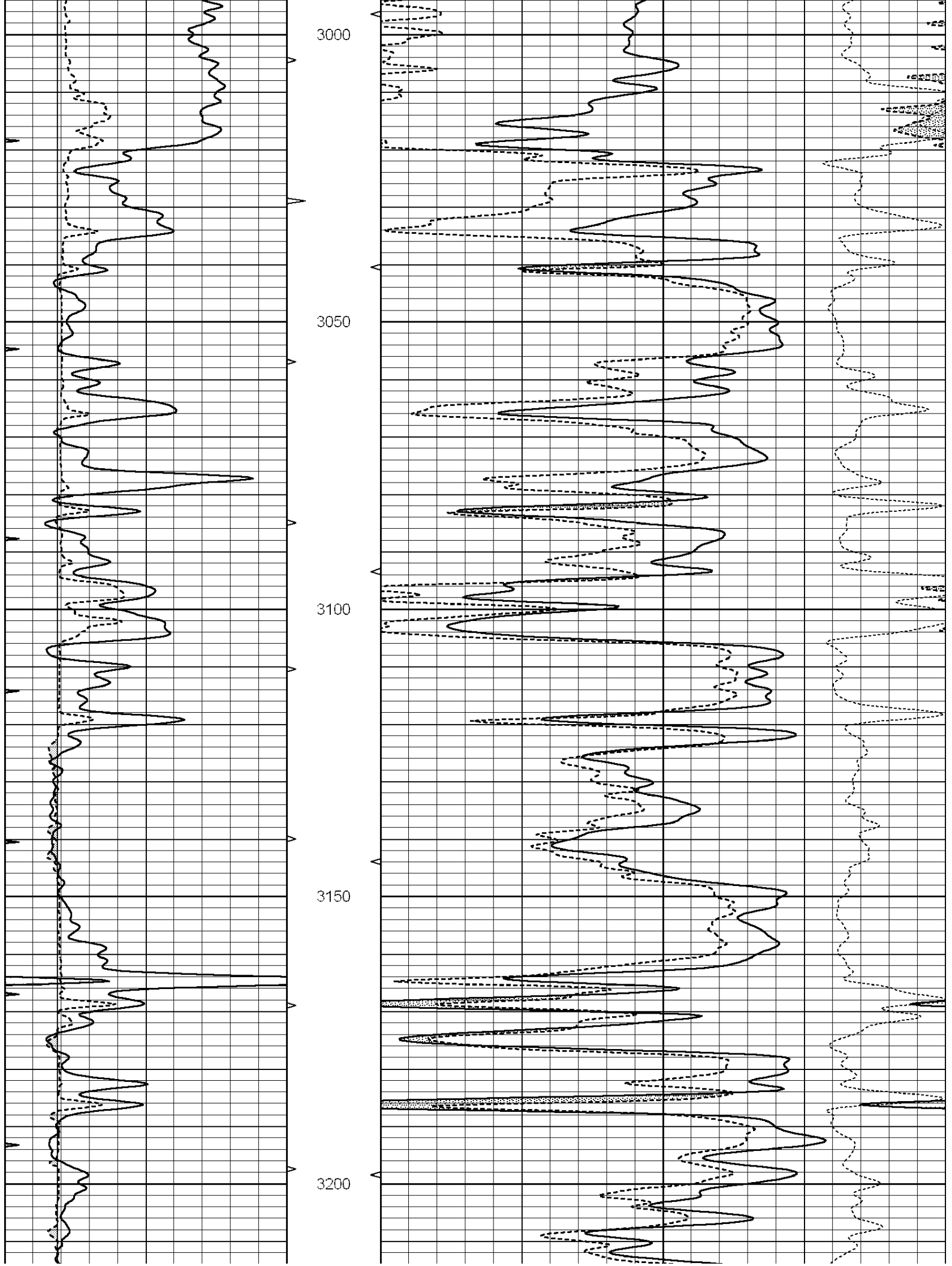
**MAIN SECTION**

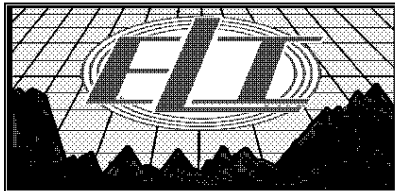
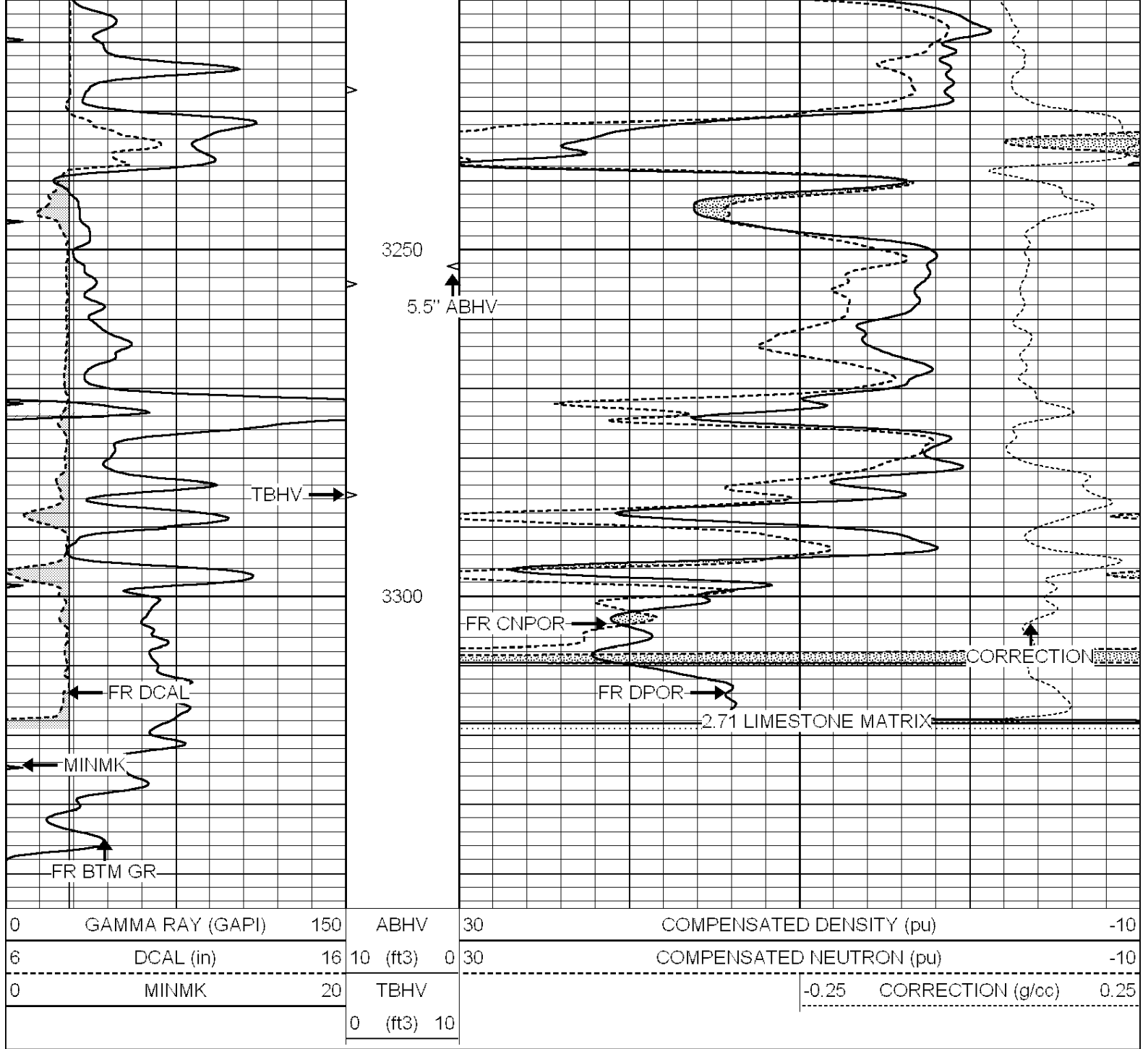
Database File: 3327ddn.db  
 Dataset Pathname: pass3.6  
 Presentation Format: den\_neu  
 Dataset Creation: Sat Dec 29 09:51:51 2018  
 Charted by: Depth in Feet scaled 1:240

0	GAMMA RAY (GAPI)	150	ABHV	30	COMPENSATED DENSITY (pu)	-10
6	DCAL (in)	16	10 (ft3)	0 30	COMPENSATED NEUTRON (pu)	-10
0	MINMK	20	TBHV		-0.25 CORRECTION (g/cc)	0.25
			0 (ft3)	10		





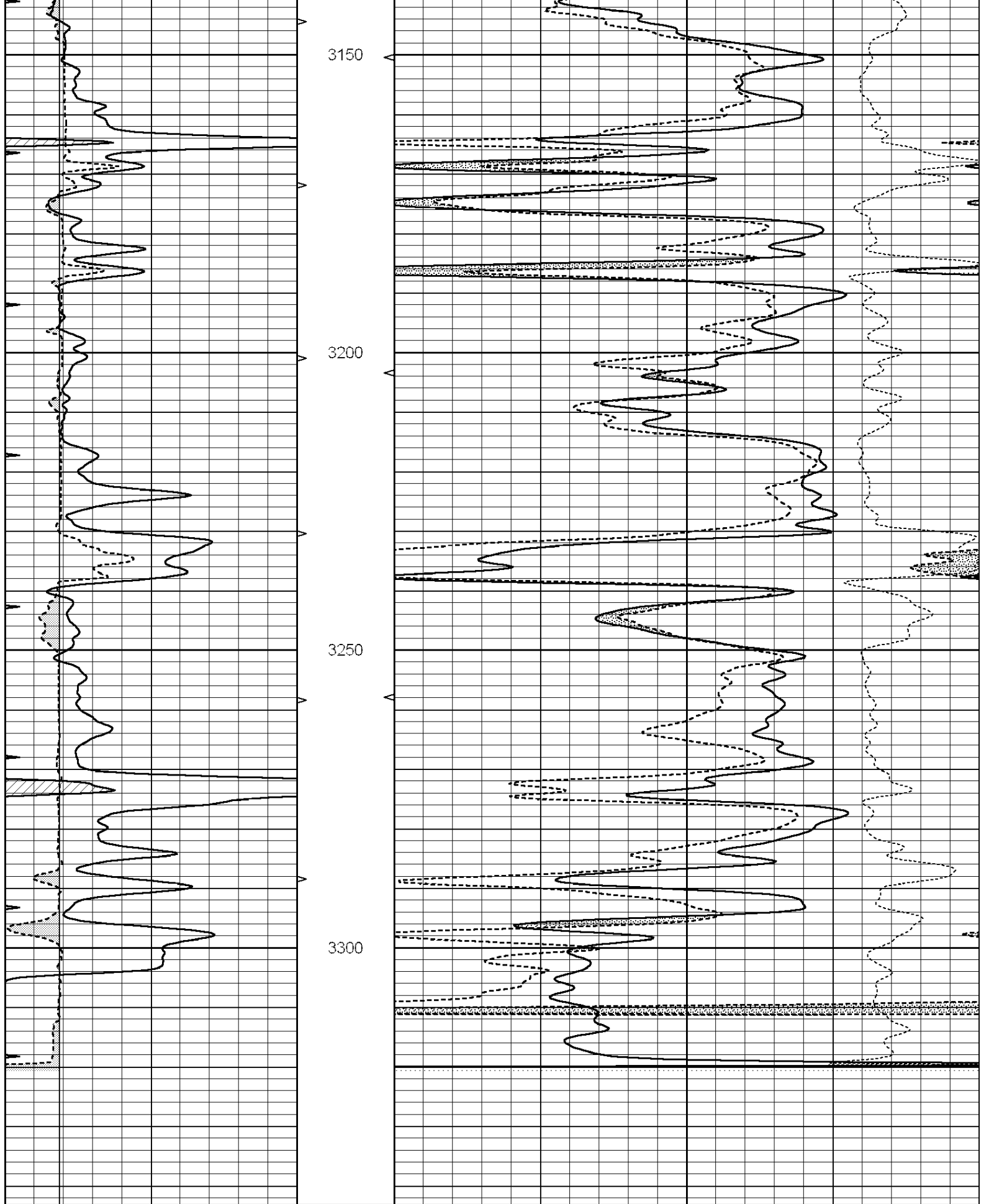




# REPEAT SECTION

Database File: 3327ddn.db  
 Dataset Pathname: pass2.2  
 Presentation Format: den\_neu  
 Dataset Creation: Sat Dec 29 08:19:15 2018 by Calc SOC 120430  
 Charted by: Depth in Feet scaled 1:240

0	GAMMA RAY (GAPI)	150	ABHV	30	COMPENSATED DENSITY (pu)	-10	
6	DCAL (in)	16	10 (ft3)	0 30	COMPENSATED NEUTRON (pu)	-10	
0	MINMK	20	TBHV		-0.25	CORRECTION (g/cc)	0.25
			0 (ft3)	10			



0	GAMMA RAY (GAPI)	150	ABHV	30	COMPENSATED DENSITY (pu)	-10	
6	DCAL (in)	16	10 (ft3)	0 30	COMPENSATED NEUTRON (pu)	-10	
0	MINMK	20	TBHV		-0.25	CORRECTION (g/cc)	0.25
			0 (ft3)	10			

Calibration Report

Database File: 1598ddn.db  
 Dataset Pathname: pass4  
 Dataset Creation: Wed Aug 30 02:13:00 2017 by Log SOC 120430

Dual Induction Calibration Report

Serial-Model: PROBE7-DILG  
 Surface Cal Performed: Wed Aug 30 00:06:33 2017  
 Downhole Cal Performed: Mon Jul 28 12:02:56 2008  
 After Survey Verification Performed: Mon Jul 28 12:02:56 2008

Surface Calibration

Loop:	Readings			References			Results	
	Air	Loop		Air	Loop		m	b
Deep	-0.014	0.629	V	0.000	400.000	mmho/m	620.000	0.000
Medium	0.039	0.728	V	0.000	464.000	mmho/m	675.000	-44.000
Internal:	Zero	Cal		Zero	Cal		m	b
Deep	0.011	0.610	V	0.000	400.000	mmho/m	667.135	-7.256
Medium	0.005	0.712	V	0.000	464.000	mmho/m	655.677	-3.102

Downhole Calibration

	Readings			References			Results	
	Zero	Cal		Zero	Cal		m'	b'
Deep	0.000	0.000	mmho/m	14.508	388.384	mmho/m	1.000	0.000
Medium	0.000	0.000	mmho/m	166.367	504.400	mmho/m	1.000	0.000
LL3		7.500	V		1400.000	Ohm-m		
		0.000	V		20.000	Ohm-m		
		-7.200	V		4000.000	mmho-m		

After Survey Verification

	Readings			Targets			Results	
	Zero	Cal		Zero	Cal		m'	b'
Deep	0.000	0.000	mmho/m	0.000	0.000	mmho/m	0.000	0.000
Medium	0.000	0.000	mmho/m	0.000	0.000	mmho/m	0.000	0.000
LL3		1.000	Ohm-m		1.000	Ohm-m		
		0.000	Ohm-m		0.000	Ohm-m		
		1.000	mmho-m		1.000	mmho-m		

Litho Density Calibration Report  
 Serial: 002 Model: PRB

Master Calibration

Performed Mon Aug 21 11:27:42 2017

	Background	Magnesium	Aluminum	Sandstone	
Window 1	837.1	10632.5	2945.1	12110.1	cps
Window 2	772.0	9117.4	2570.1	10197.3	cps
Window 3	631.7	4669.0	1481.9	5042.9	cps
Window 4	187.0	187.5	185.9	189.9	cps
Long Space	0.0	8345.4	1798.1	9425.3	cps
Short Space	1.1	1927.9	1285.9	2050.2	cps
Rho		1.7100	2.5960	1.3800	g/cc
Pe		0.0000	2.5700	1.5500	
Rib Angle	: 45.2	Rib Slope	: 1.008	Density/Spine Ratio	: 0.558
Spine Angle	: 75.2	Spine Slope	: 3.790	Spine Intercept	: -19.6

Before Survey Verification

Performed Wed Dec 31 18:00:00 1969

Window 1	0.0	0.0	0.0	0.0	cps
Window 2	0.0	0.0	0.0	0.0	cps
Window 3	0.0	0.0	0.0	0.0	cps
Window 4	0.0	0.0	0.0	0.0	cps
Long Space	0.0	0.0	0.0	0.0	cps
Short Space	0.0	0.0	0.0	0.0	cps
Measured Rho		0.0000	0.0000	0.0000	g/cc
Measured Correction		0.0000	0.0000	0.0000	g/cc
Measured Pe			0.0000	0.0000	

After Survey Verification

Performed Wed Dec 31 18:00:00 1969

Window 1	0.0	0.0	0.0	0.0	cps
Window 2	0.0	0.0	0.0	0.0	cps
Window 3	0.0	0.0	0.0	0.0	cps
Window 4	0.0	0.0	0.0	0.0	cps
Long Space	0.0	0.0	0.0	0.0	cps
Short Space	0.0	0.0	0.0	0.0	cps
Measured Rho		0.0000	0.0000	0.0000	g/cc
Measured Correction		0.0000	0.0000	0.0000	g/cc
Measured Pe			0.0000	0.0000	

Compensated Neutron Calibration Report

Serial Number: 070808  
Tool Model: Probe

PRE-SURVEY VERIFICATION

Detector	Readings	Measured	Target
Short Space	cps		
Long Space	cps	pu	pu

POST-SURVEY VERIFICATION

Detector	Readings	Measured	Target
Short Space	cps		
Long Space	cps	pu	pu

Gamma Ray Calibration Report

Serial Number: 070558  
Tool Model: OPEN\_GR  
Performed: Wed May 31 00:09:32 2017

Calibrator Value: 1.0 GAPI  
Background Reading: 0.0 cps  
Calibrator Reading: 1.0 cps  
Sensitivity: 0.2800 GAPI/cps