



SONIC LOG

Company JOHN ROY EVANS OIL COMPANY, LLC.
 Well PENKA #26-1
 Field SNOW WHITE NORTH
 County BARTON
 State KANSAS

Company JOHN ROY EVANS OIL COMPANY, LLC.
 Well PENKA #26-1
 Field SNOW WHITE NORTH
 County BARTON State KANSAS

Location: API # : 15-009-26231-0000
 1840' FSL & 975' FEL
 NE - SW - NE - SE
 Permanent Datum GROUND LEVEL Elevation 1807
 Log Measured From KELLY BUSHING 7' A.G.L.
 Drilling Measured From KELLY BUSHING
 SEC 26 TWP 17S RGE 12W
 Other Services CDL/CNL DIL/MEL
 Elevation KB. 1814 D.F. 1812 G.L. 1807

Date	12/29/18
Run Number	TWO
Depth Driller	3340
Depth Logger	3338
Bottom Logged Interval	3330
Top Log Interval	600
Casing Driller	8 5/8"@660'
Casing Logger	660
Bit Size	7 7/8"
Type Fluid in Hole	CHEMICAL MUD
Density / Viscosity	8.9/44
pH / Fluid Loss	10.0/7.6
Source of Sample	FLOWLINE
Rim @ Meas. Temp	.500@40F
Rmf @ Meas. Temp	.375@40F
Rmc @ Meas. Temp	.600@40F
Source of Rmf / Rmc	MEASUREMENT
Rim @ BHT	.182@110F
Time Circulation Stopped	9.5 HOURS
Time Logger on Bottom	10:30 A.M.
Maximum Recorded Temperature	110F
Equipment Number	922339
Location	HAYS, KANSAS
Recorded By	JEFF LUEBBERS
Witnessed By	WYATT URBAN
	GARY KIRMER

<<< Fold Here >>>

All interpretations are opinions based on inferences from electrical or other measurements and we cannot and do not guarantee the accuracy or correctness of any interpretation, and we shall not, except in the case of gross or willful negligence on our part, be liable or responsible for any loss, costs, damages, or expenses incurred or sustained by anyone resulting from any interpretation made by any of our officers, agents or employees. These interpretations are also subject to our general terms and conditions set out in our current Price Schedule.

Comments

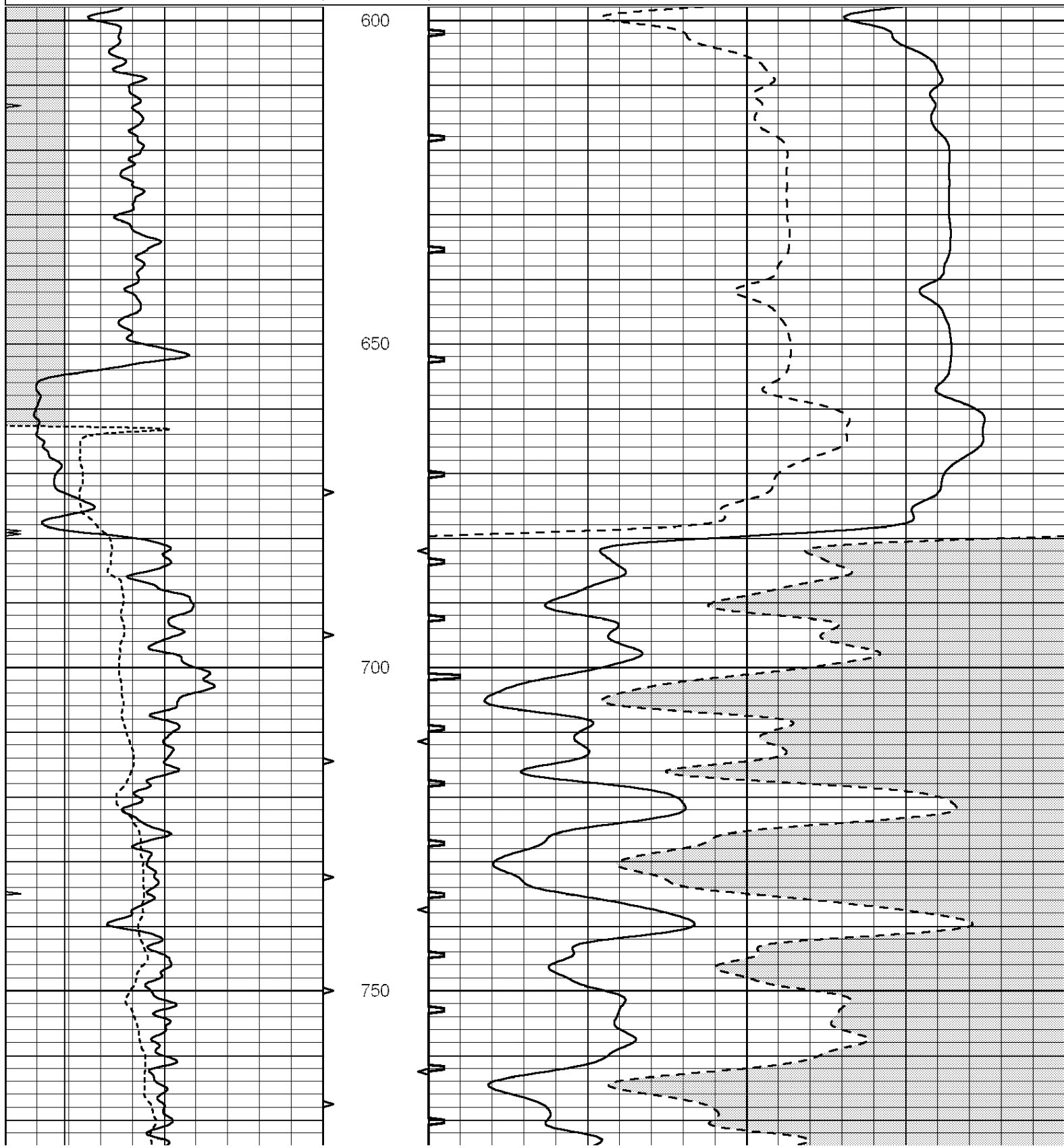
THANK YOU FOR USING ELI WIRELINE HAYS, KANSAS (785) 628-6395
 DIRECTIONS
 ODIN, KS., 1 1/2S. ON BLKTOP, W. INTO

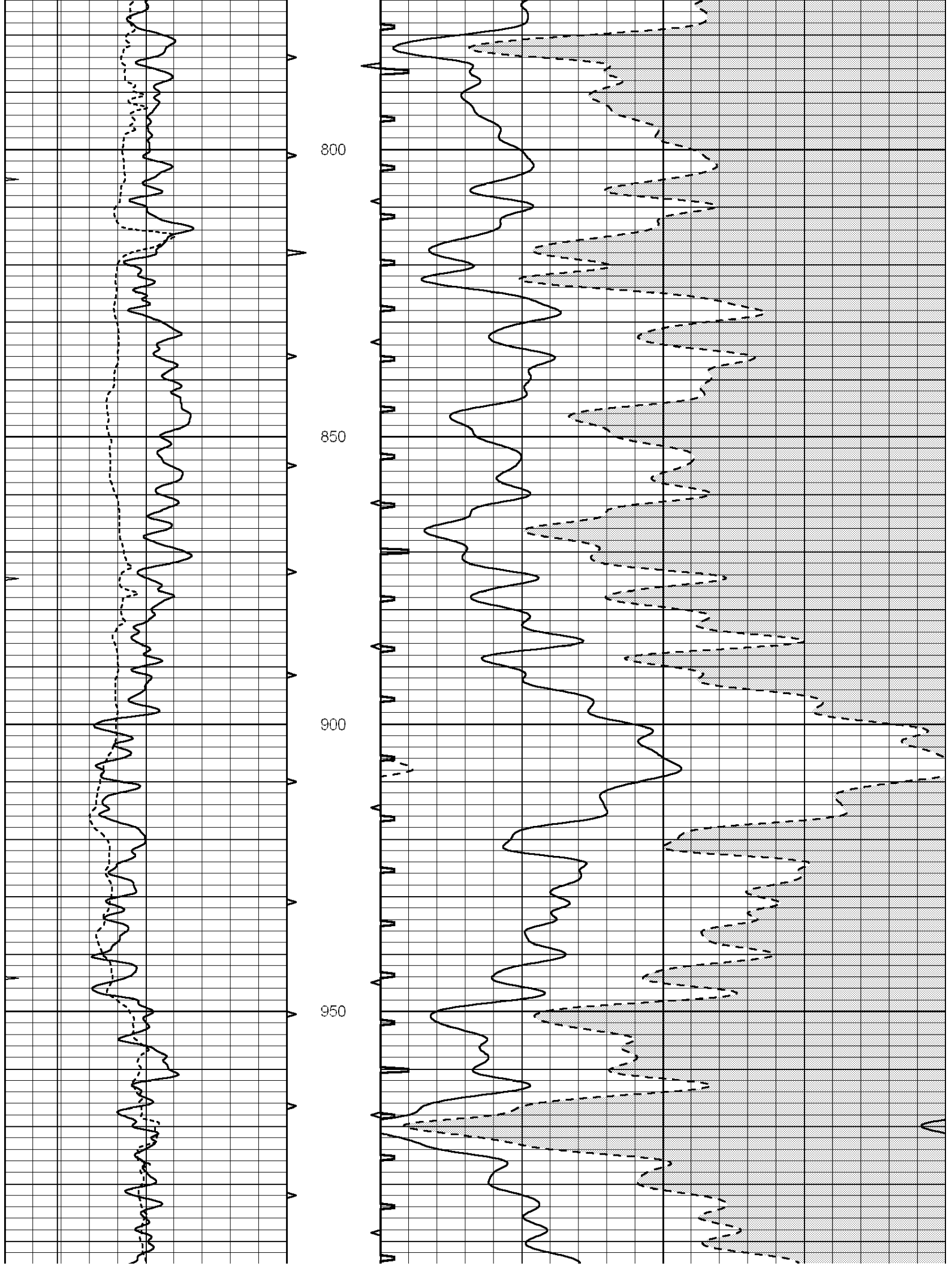


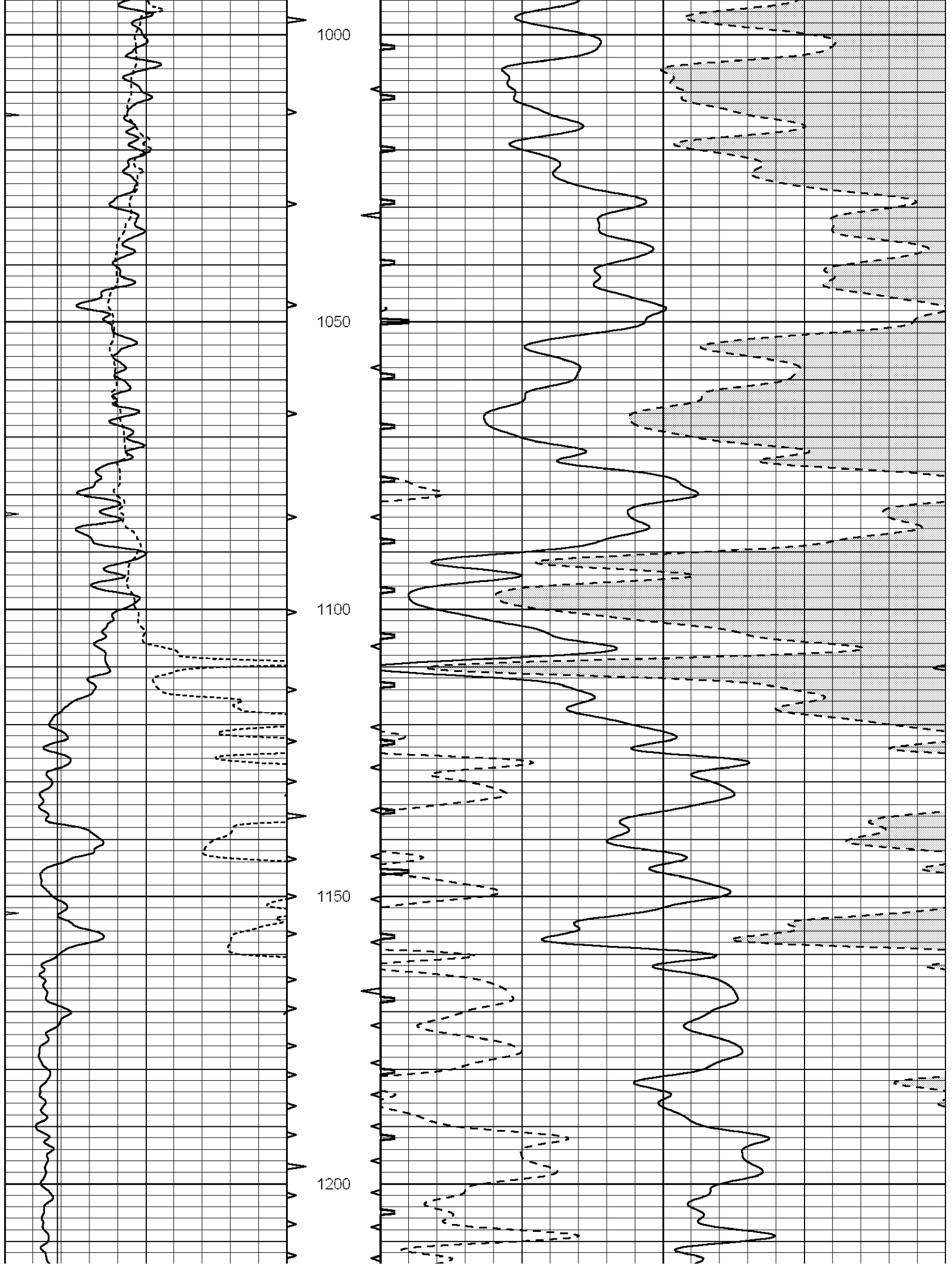
MAIN SECTION

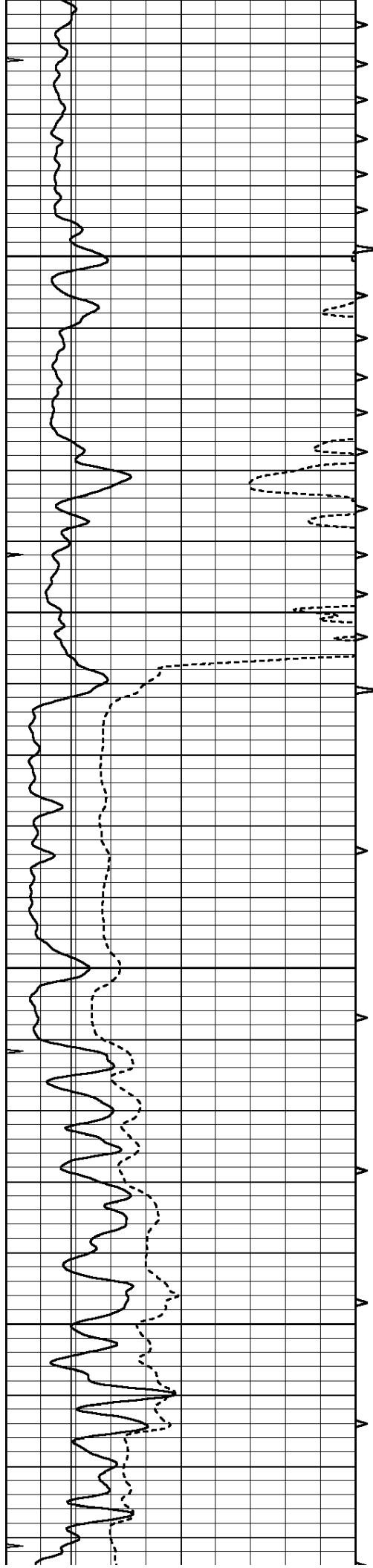
Database File: 3327ddn.db
 Dataset Pathname: pass8.7
 Presentation Format: slt
 Dataset Creation: Sat Dec 29 11:25:41 2018
 Charted by: Depth in Feet scaled 1:240

0	GAMMA RAY (GAPI)	150	ABHV	140	DELTA TIME (usec/ft)	40
6	CALIPER (in)	16	10 (ft3)	0	30	SONIC POROSITY (pu)
0	MINMK	20	TBHV	0	ITT (msec)	20
			0 (ft3)	10		







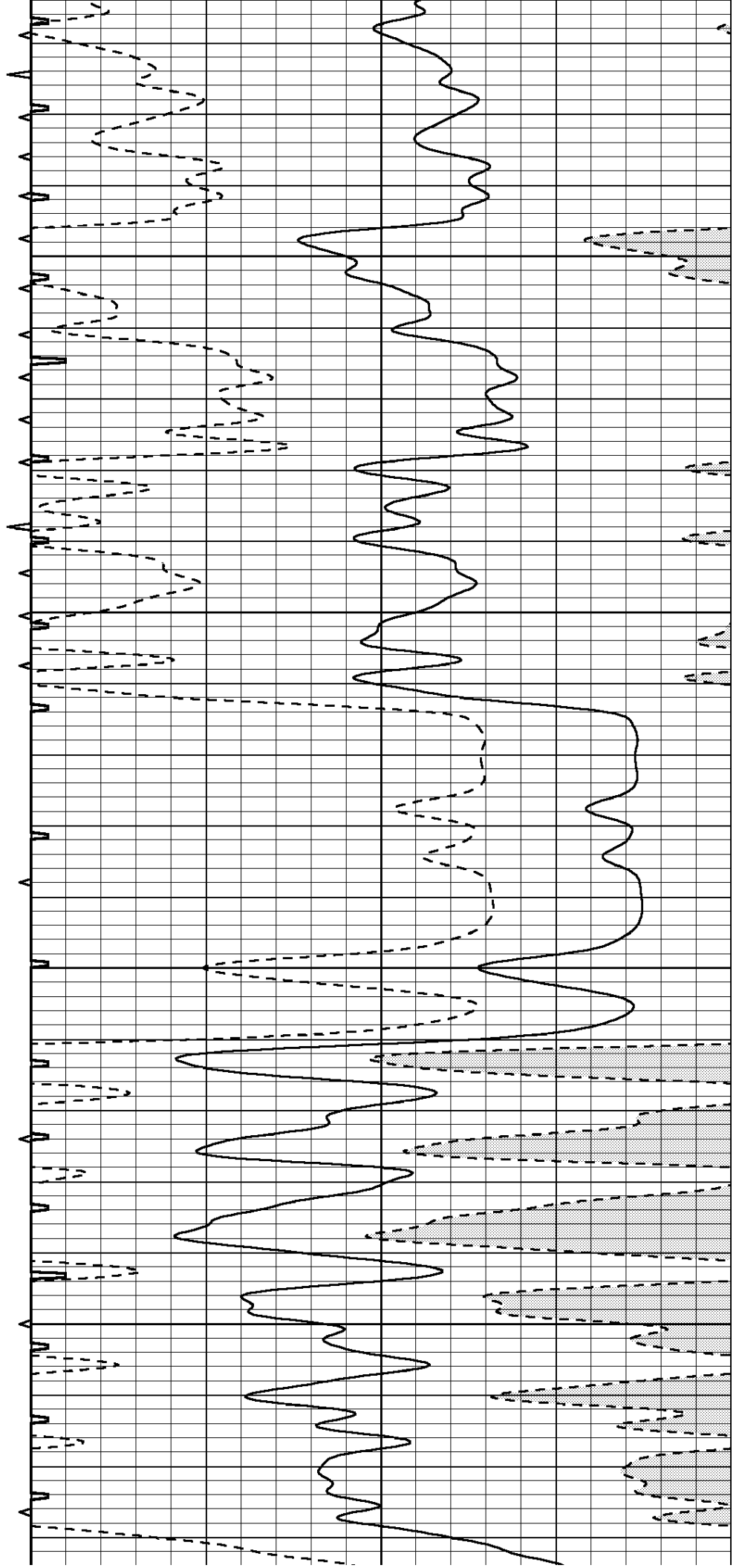


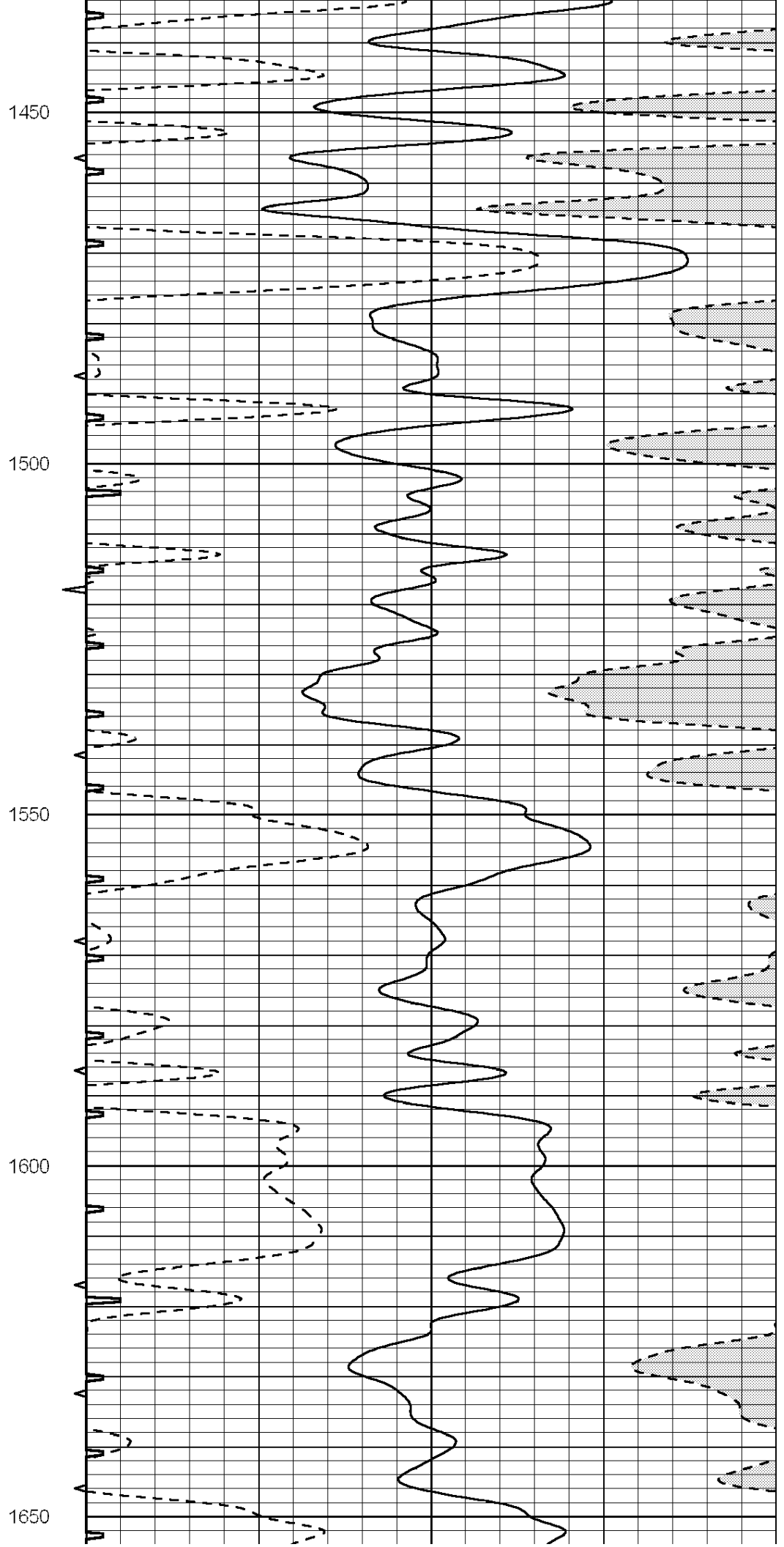
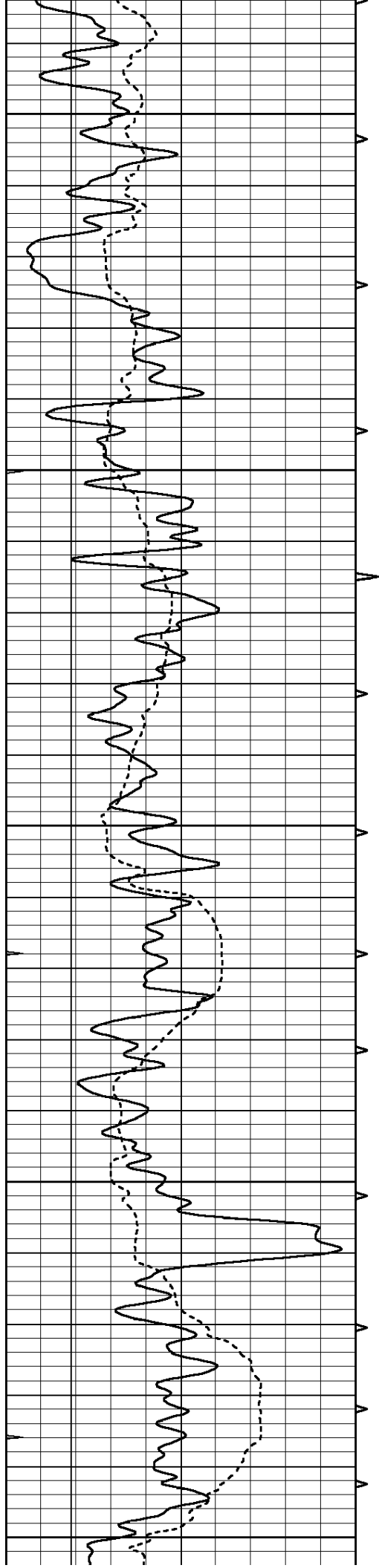
1250

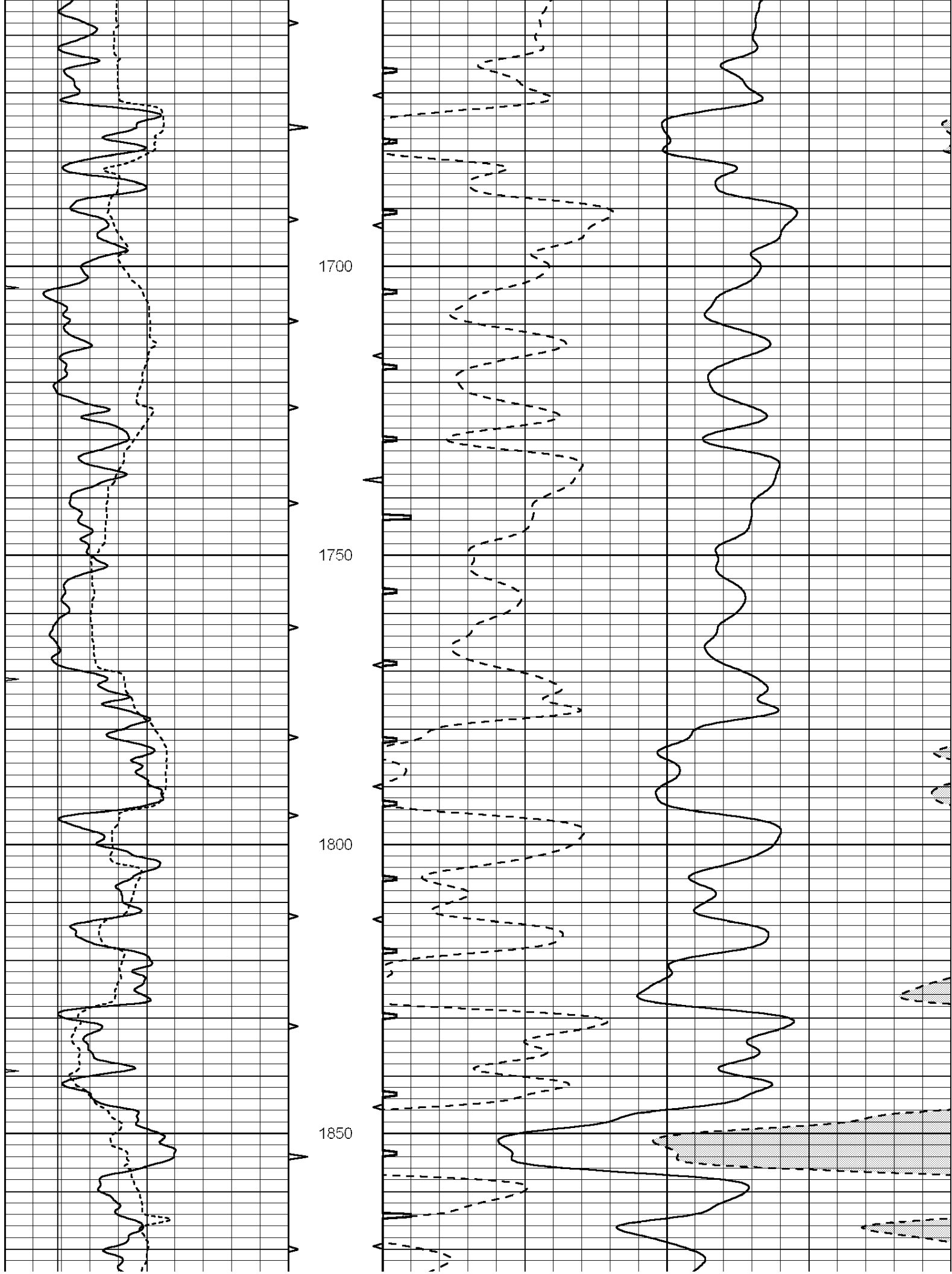
1300

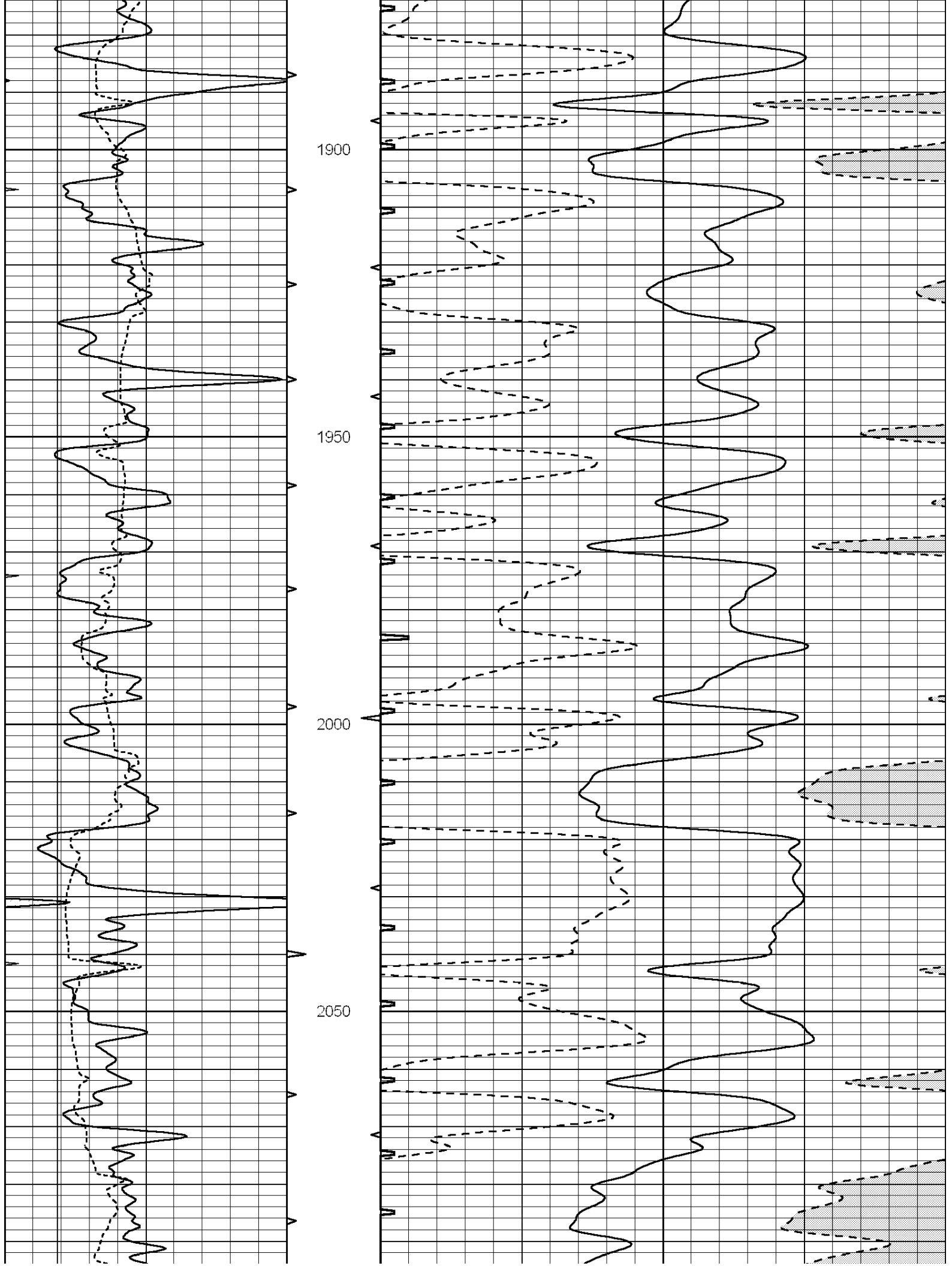
1350

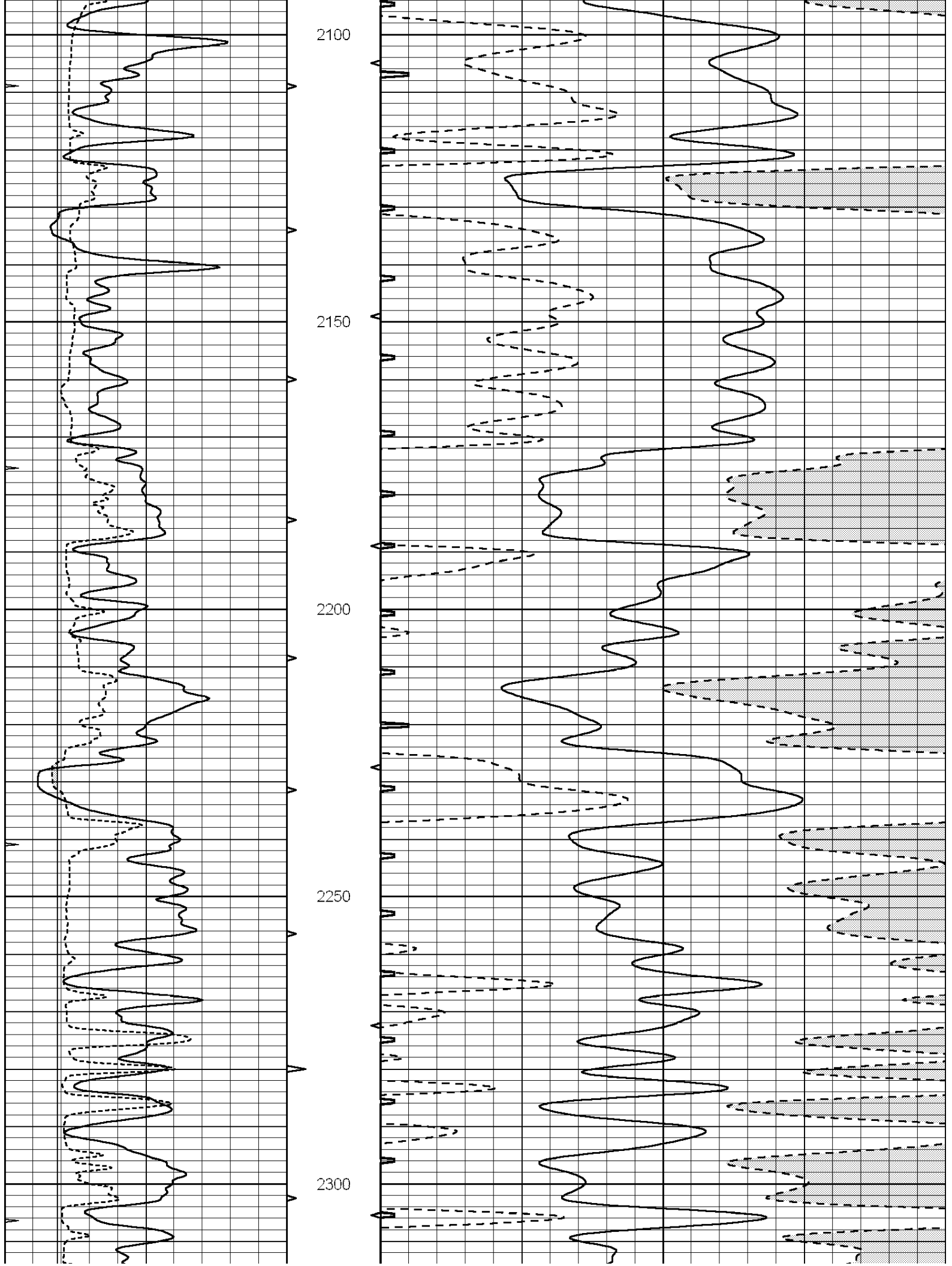
1400

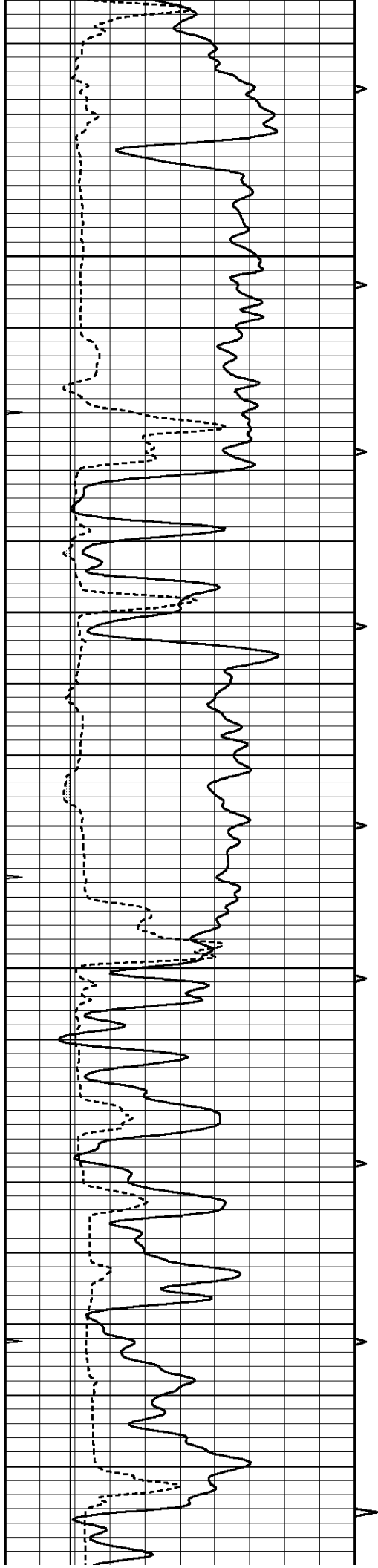










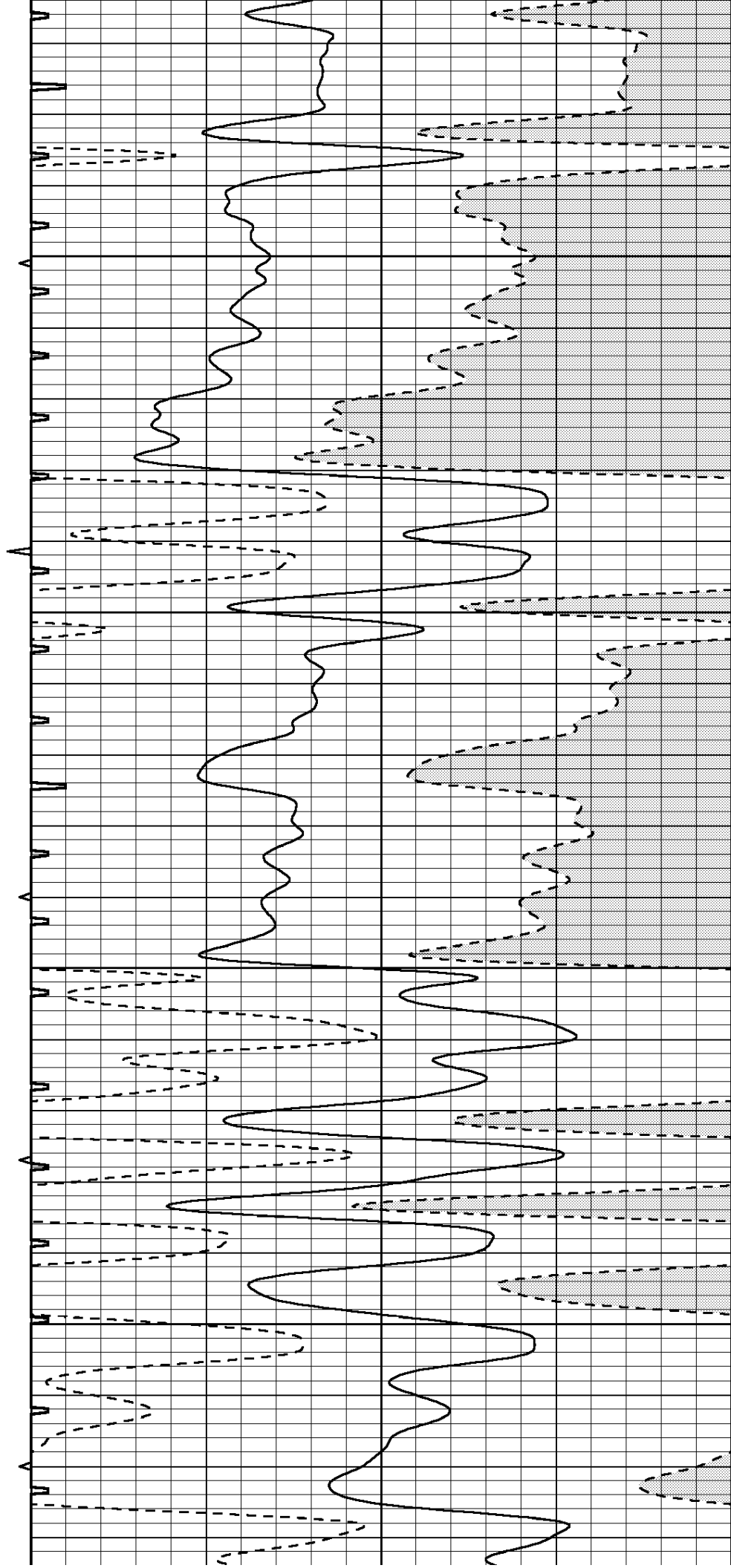


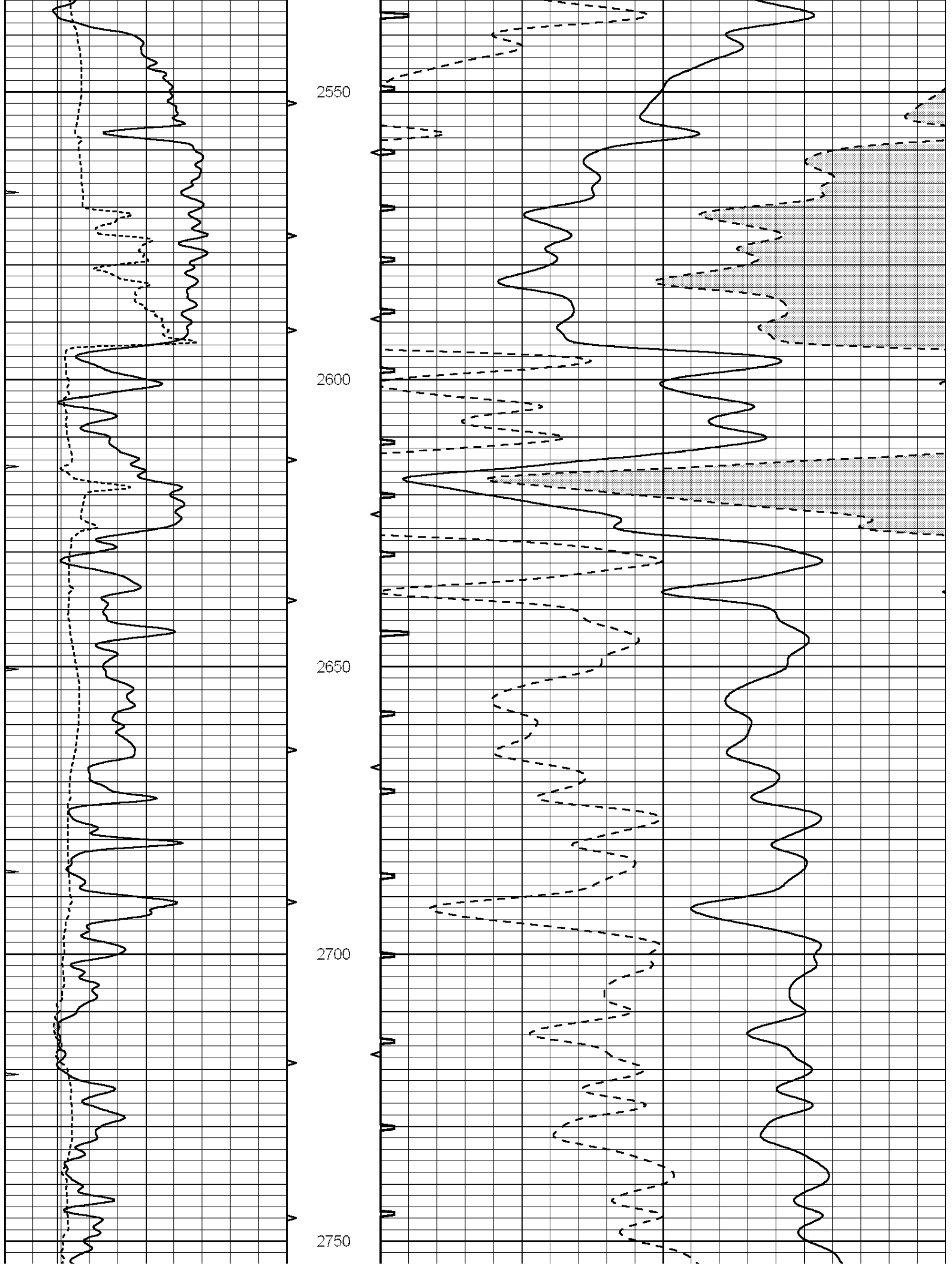
2350

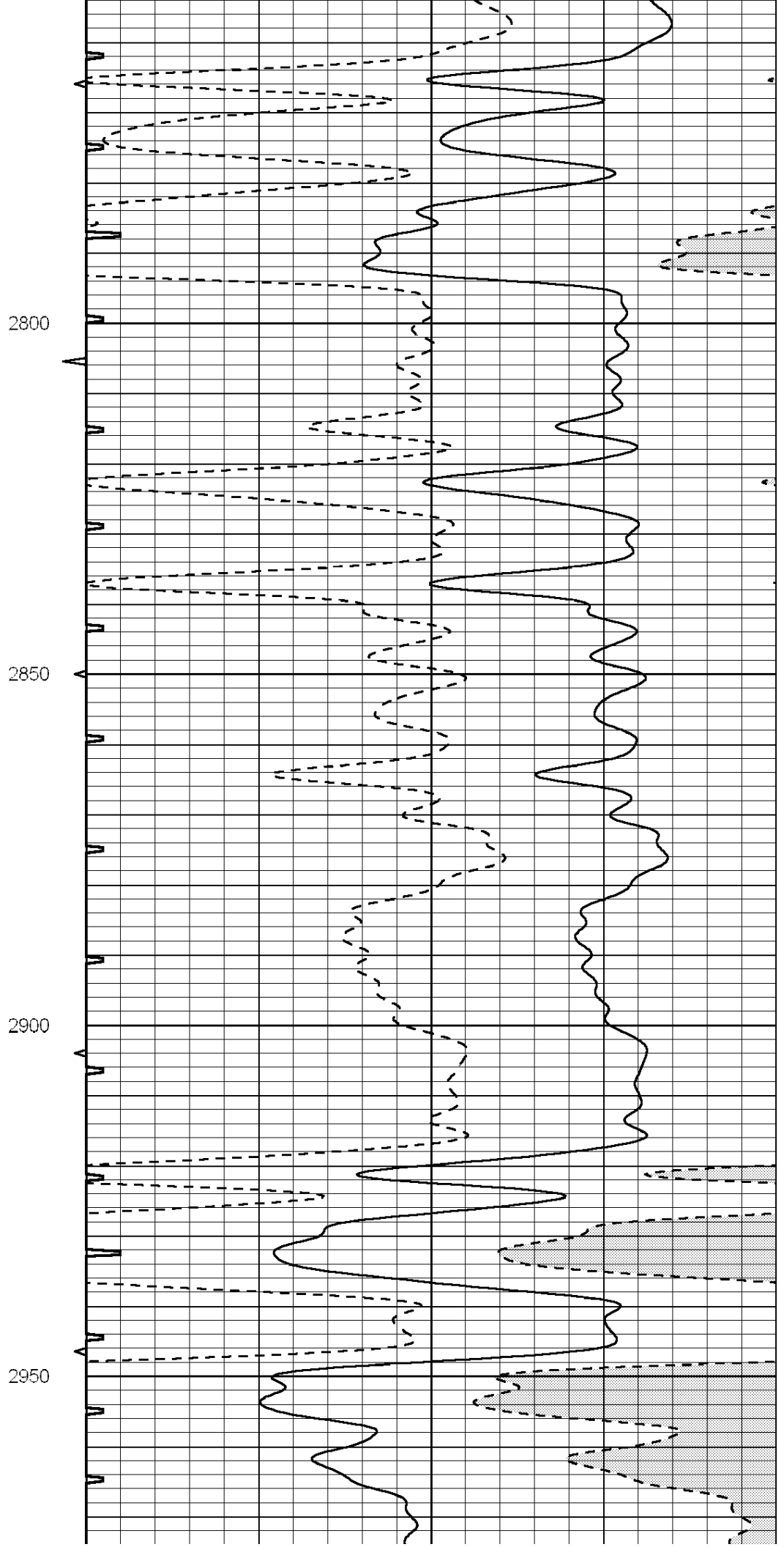
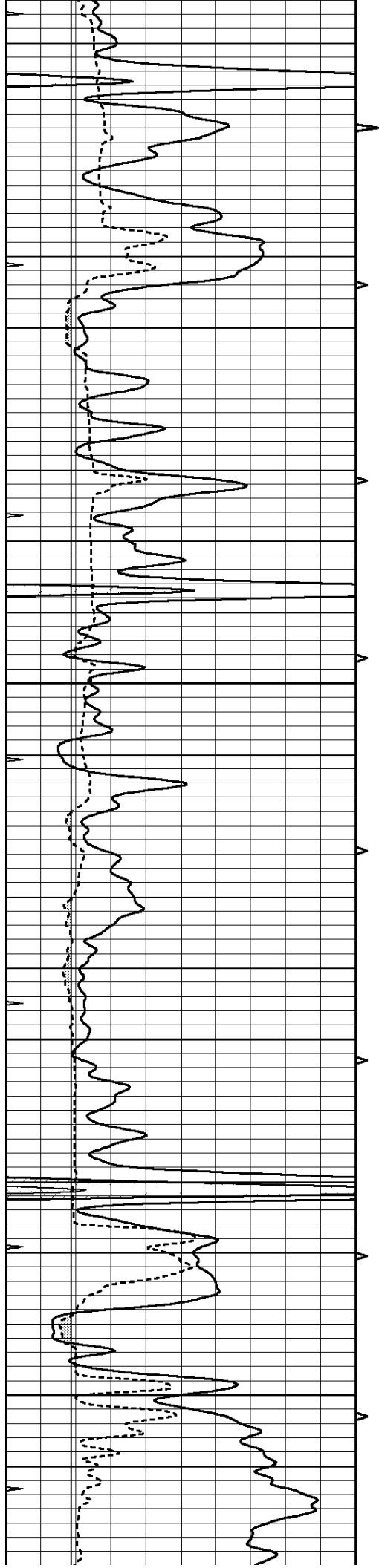
2400

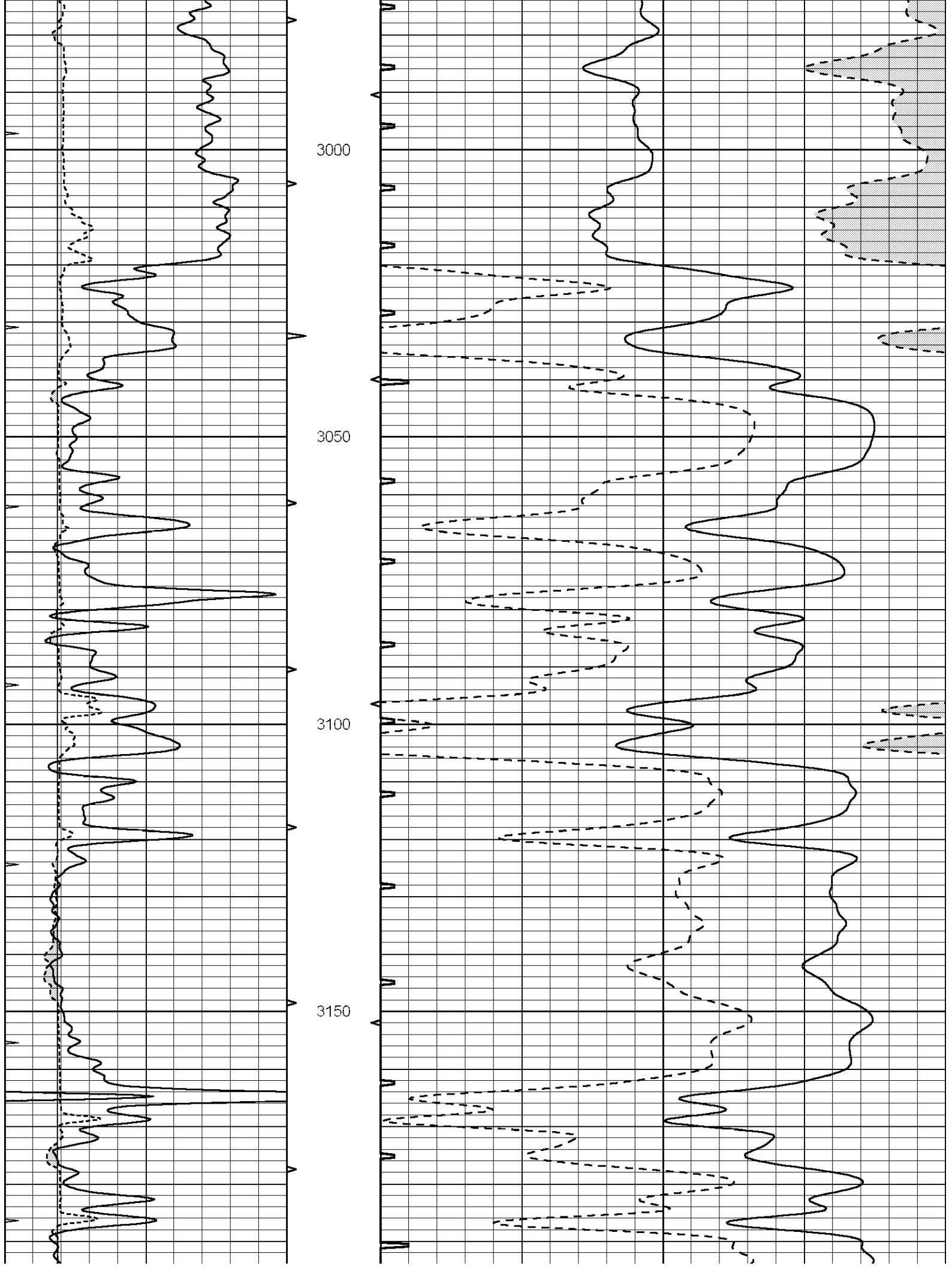
2450

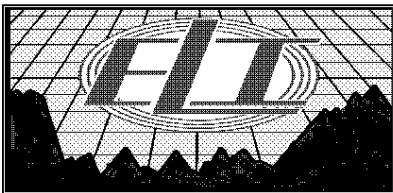
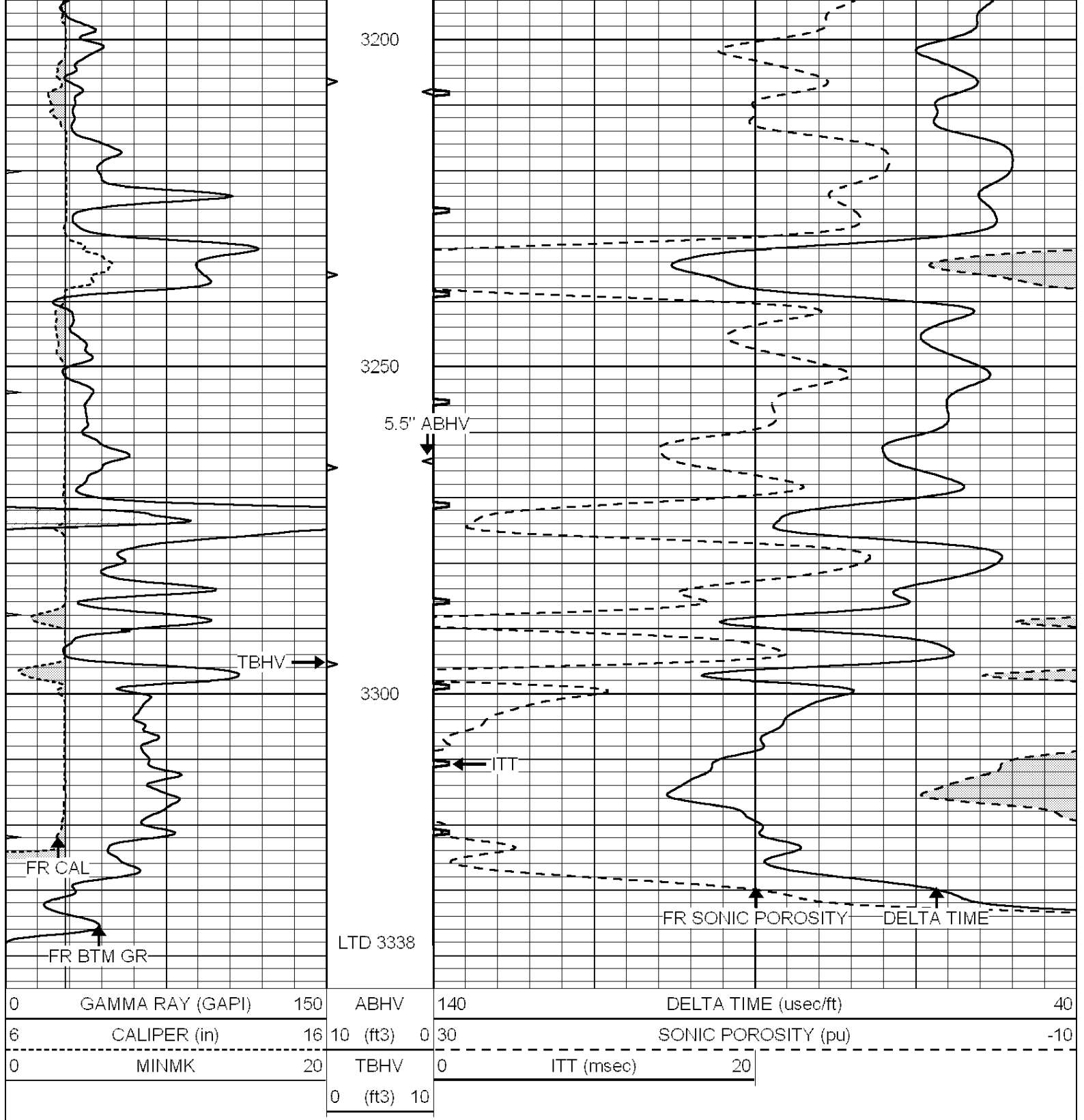
2500











REPEAT SECTION

Database File: 3327ddn.db
 Dataset Pathname: pass7.2
 Presentation Format: slt
 Dataset Creation: Sat Dec 29 10:29:23 2018 by Calc SOC 120430
 Charted by: Depth in Feet scaled 1:240

0	GAMMA RAY (GAPI)	150	ABHV	140	DELTA TIME (usec/ft)	40
---	------------------	-----	------	-----	----------------------	----

6	CALIPER (in)	16	10 (ft3)	0	30	SONIC POROSITY (pu)	-10
0	MINMK	20	TBHV	0	ITT (msec)	20	
			0 (ft3)	10			

