



# DUAL COMP POROSITY LOG

Company CHARLES N. GRIFFIN  
 Well WOOD NO. 2  
 Field TROUSDALE NORTHEAST  
 County EDWARDS  
 State KANSAS

Company CHARLES N. GRIFFIN  
 Well WOOD NO. 2  
 Field TROUSDALE NORTHEAST  
 County EDWARDS State KANSAS

Location: API #: 15-047-21656-00-00  
 330' FNL & 2310' FEL  
 SEC 27 TWP 26S RGE 16W  
 Permanent Datum GROUND LEVEL Elevation 2078'  
 Log Measured From KELLY BUSHING  
 Drilling Measured From KELLY BUSHING  
 Other Services DIL  
 Elevation K.B. 2083'  
 D.F. N/A  
 G.L. 2078'

Date	2/1/17						
Run Number	ONE						
Type Log	CNL/CDL						
Depth Driller	4650'						
Depth Logger	4652'						
Bottom Logged Interval	4631'						
Top Logged Interval	3700'						
Type Fluid In Hole	CHEMICAL						
Salinity, PPM CL	4,000						
Density	9.3						
Level	FULL						
Max. Rec. Temp. F	123 DEG/F						
Operating Rig Time	2 HOURS						
Equipment -- Location	108 COLBY						
Recorded By	J. HENRICKSON						
Witnessed By	BRUCE REED						
Borehole Record			Casing Record				
Run No.	Bit	From	To	Size	Wgt.	From	To
ONE	12.25"	00'	406'	8.625"	23#	00'	406'
TWO	7.875"	406'	TD				

<<< Fold Here >>>

All interpretations are opinions based on inferences from electrical or other measurements and Pioneer Wireline Services, LLC cannot and does not guarantee the accuracy or correctness of any interpretation, and Pioneer Wireline Services, LLC will not be liable or responsible for any loss, costs, damages, or expenses incurred or sustained by anyone resulting from any interpretation made by any of our officers, agents or employees.

Comments

N/A DENOTES NOT AVAILABLE OR NON-APPLICABLE.  
 TROUSDALE KANSAS  
 1/2 SOUTH, 2 EAST TO 290, 3 1/2 SOUTH, 1/2 WEST INTO

Log Measured From: KELLY BUSHING 5 Ft. Above Permanent Datum

THANK YOU FOR USING PIONEER ENERGY SERVICES  
[www.pioneerenergy.com](http://www.pioneerenergy.com) 785-625-3858

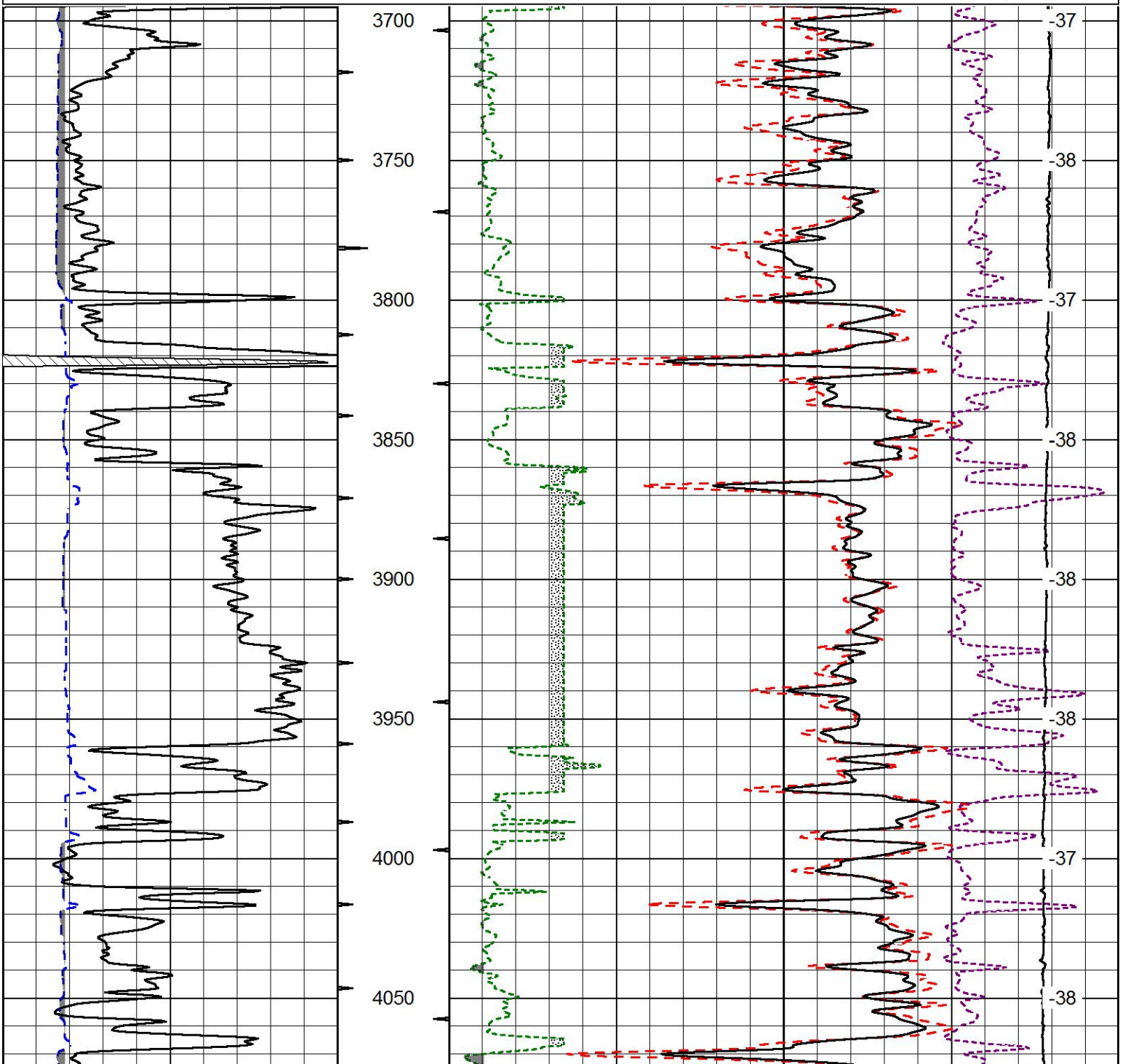
Your Pioneer Energy Services Crew	This Log Record Was Witnessed By
Engineer: J. HENRICKSON	Primary Witness: BRUCE REED
Operator:	Secondary Witness:
Operator:	Secondary Witness:
Operator: C. PFEIFER	Secondary Witness:

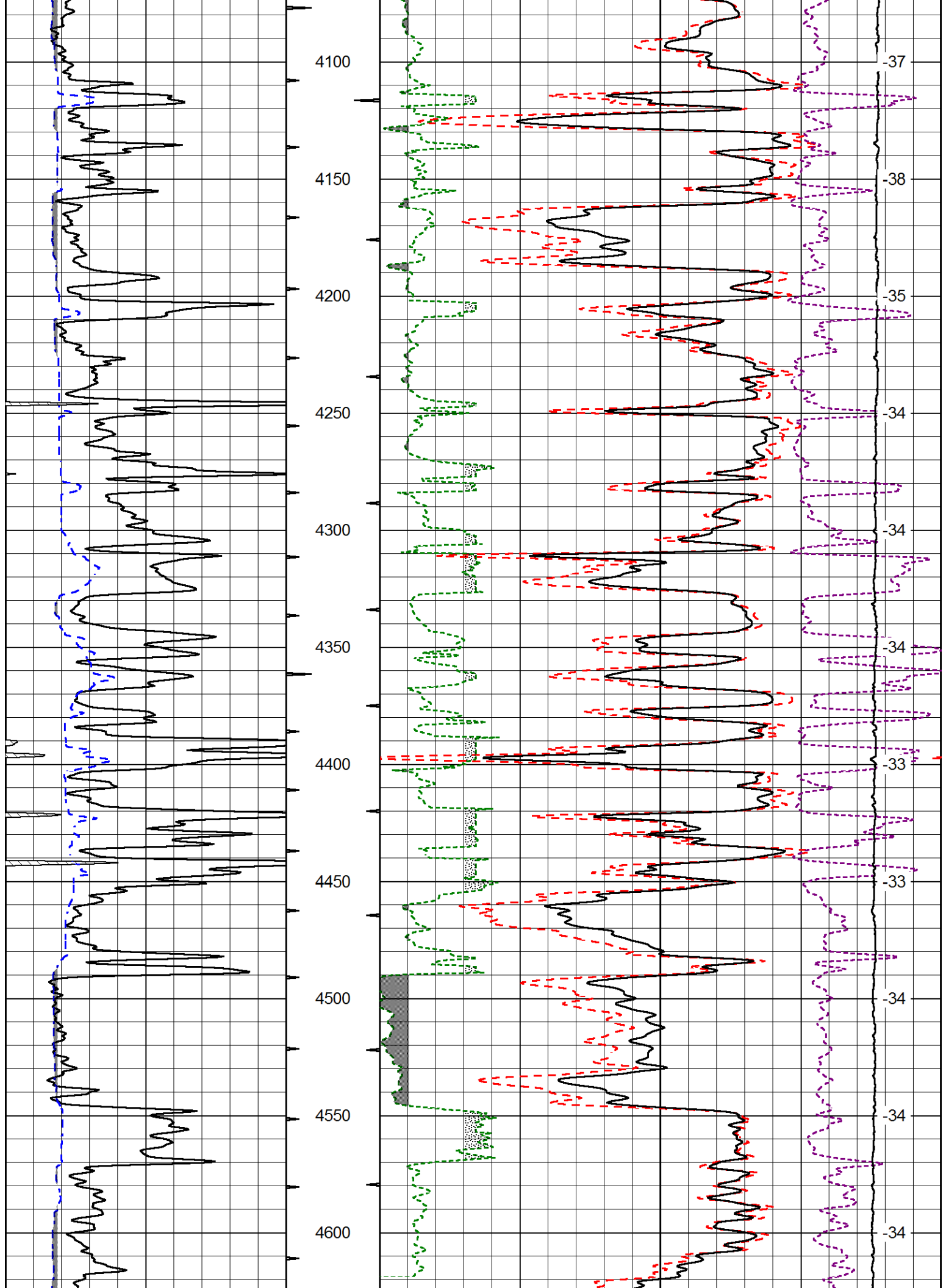
Database File griffin\_wood\_2hd.db  
 Dataset Pathname DIL/griffin\_wood\_no2  
 Presentation Format cdl  
 Dataset Creation Wed Feb 01 17:09:08 2017  
 Charted by Depth in Feet scaled 1:600

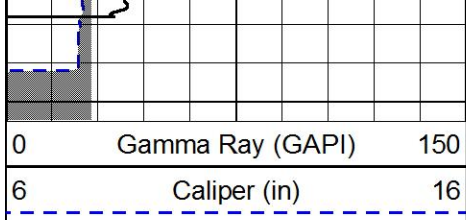
0	Gamma Ray (GAPI)	150
6	Caliper (in)	16

30	Compensated Density (pu)		-10
2	Bulk Density (g/cc)		3
15000	Line Tension (lb)		0
2.625	DGA (g/cc)	3.425	-0.25
	Correction (g/cc)		0.25

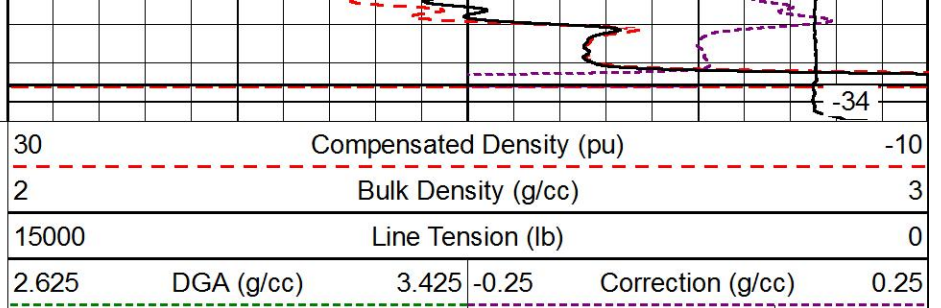
LSPD  
(ft/min)







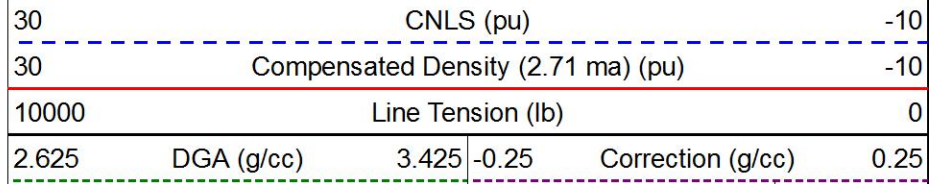
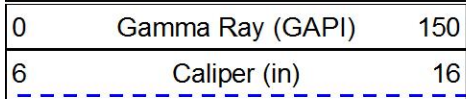
4650



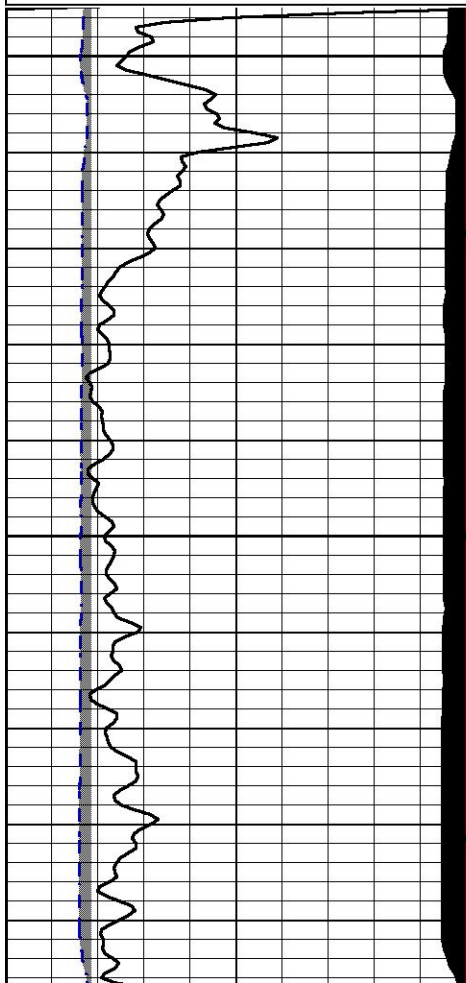
LSPD  
(ft/min)



Database File griffin\_wood\_2hd.db  
 Dataset Pathname DIL/griffin\_wood\_no2  
 Presentation Format cndlspec  
 Dataset Creation Wed Feb 01 17:09:08 2017  
 Charted by Depth in Feet scaled 1:240

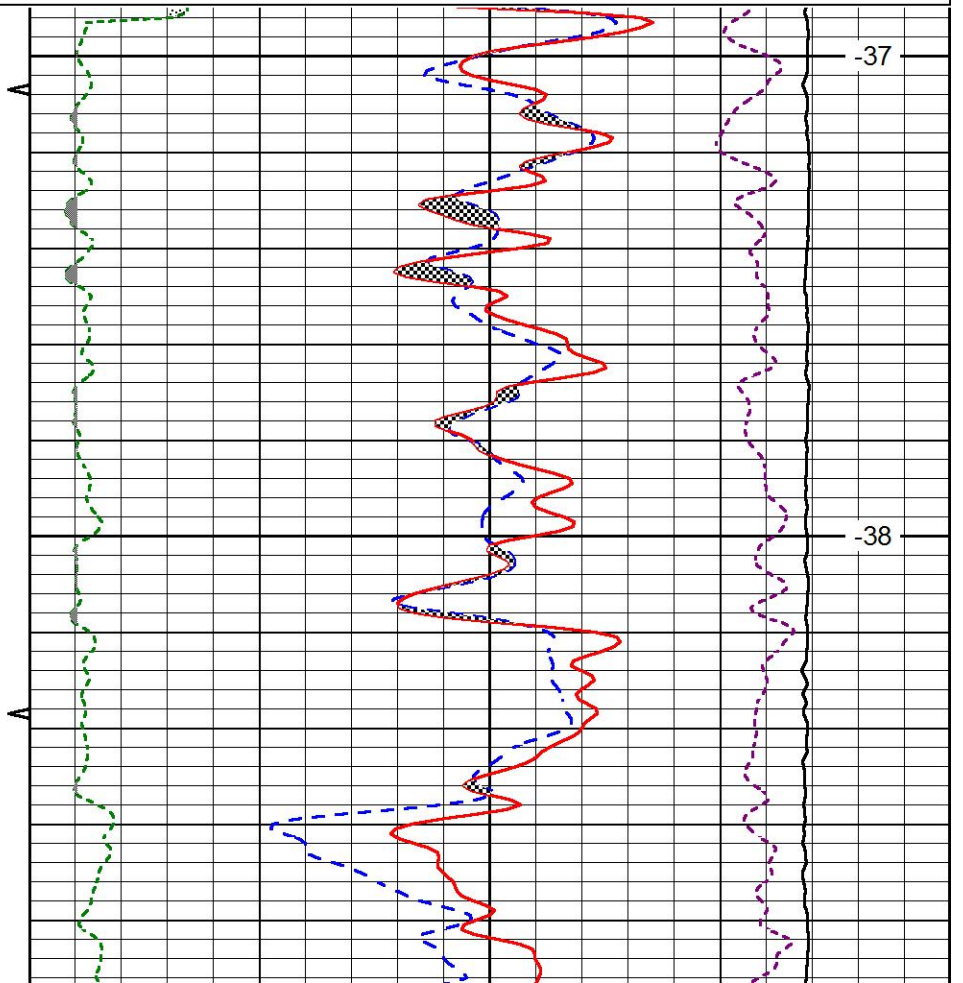


LSPD  
(ft/min)



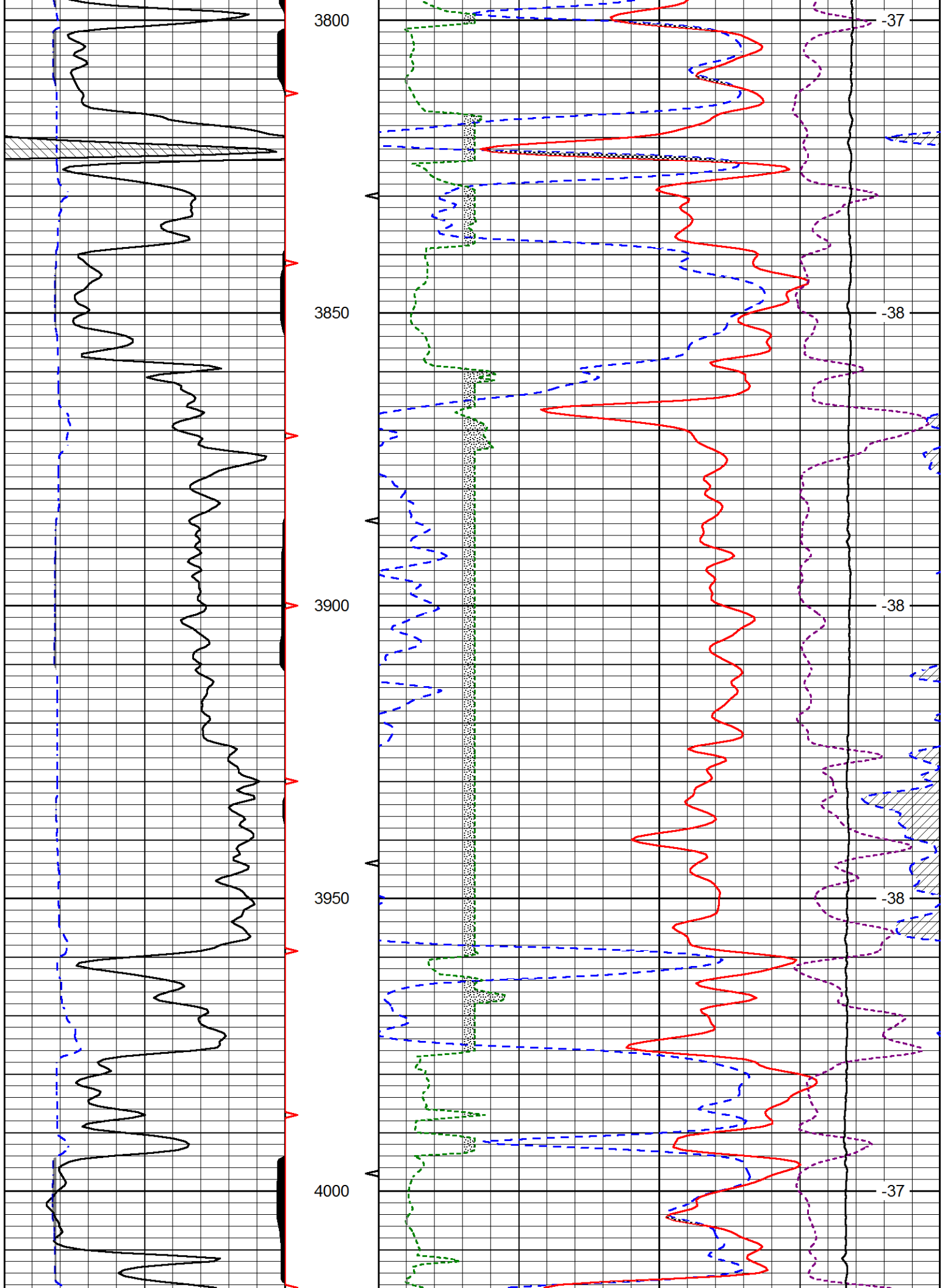
3700

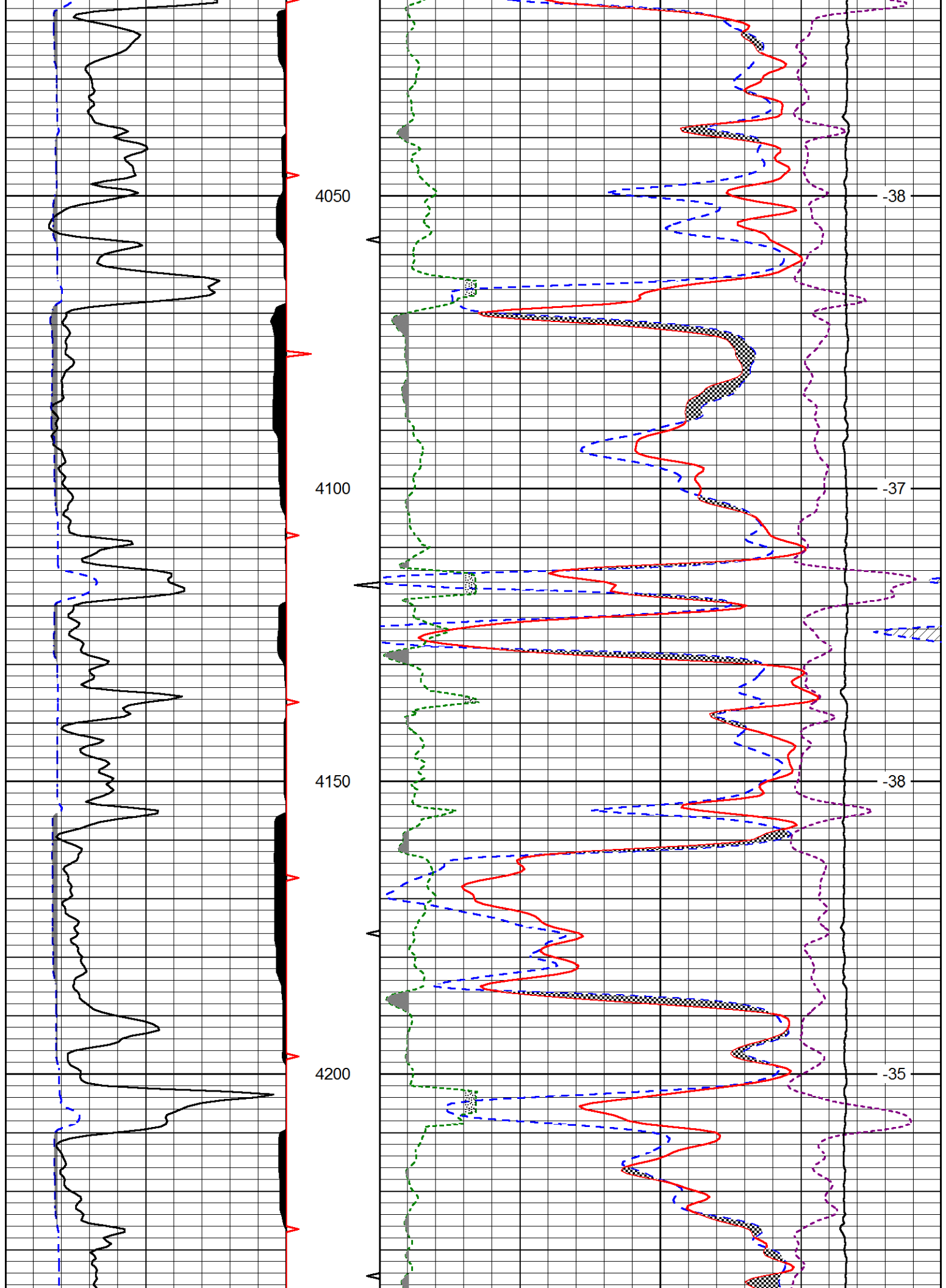
3750

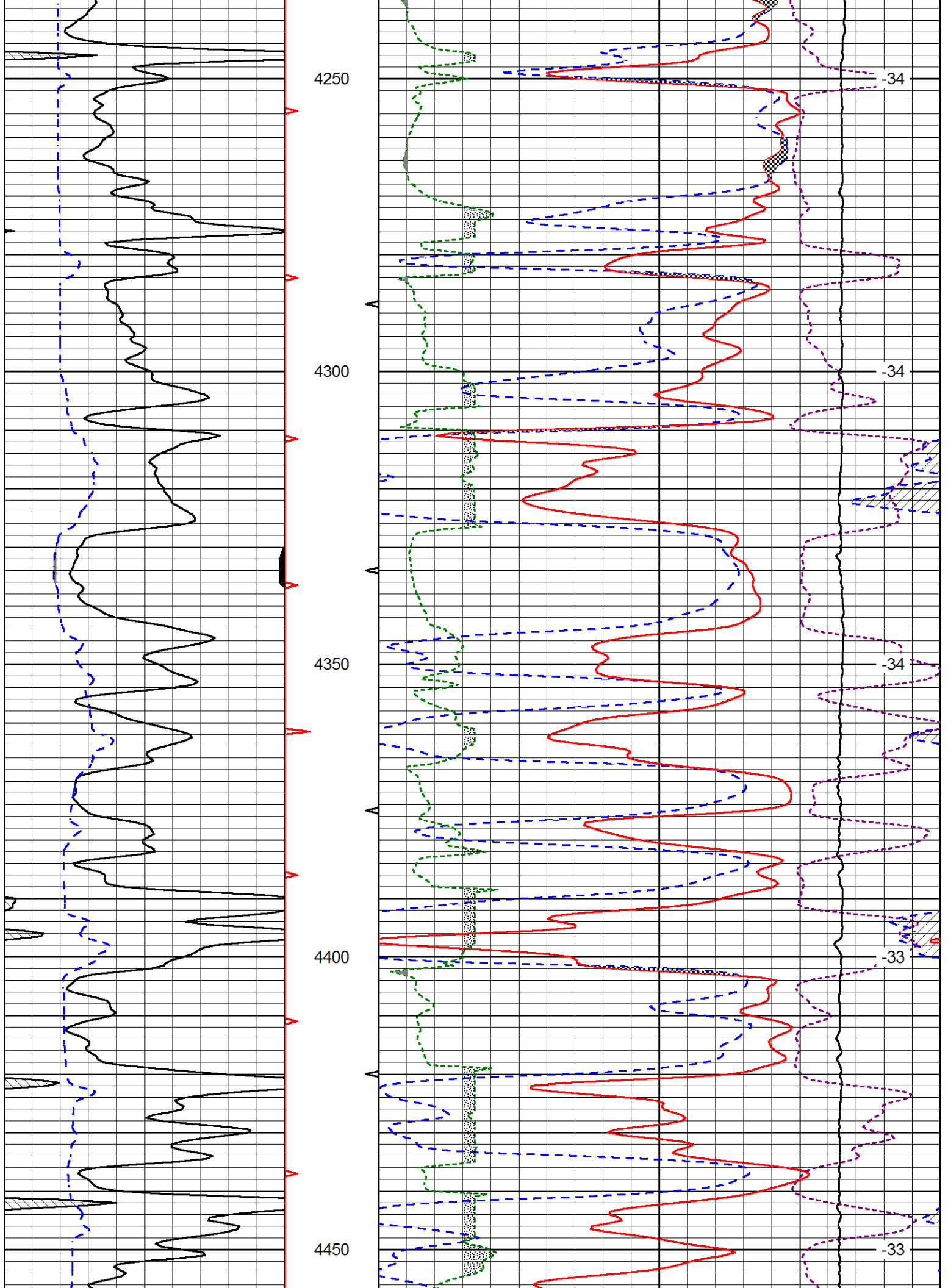


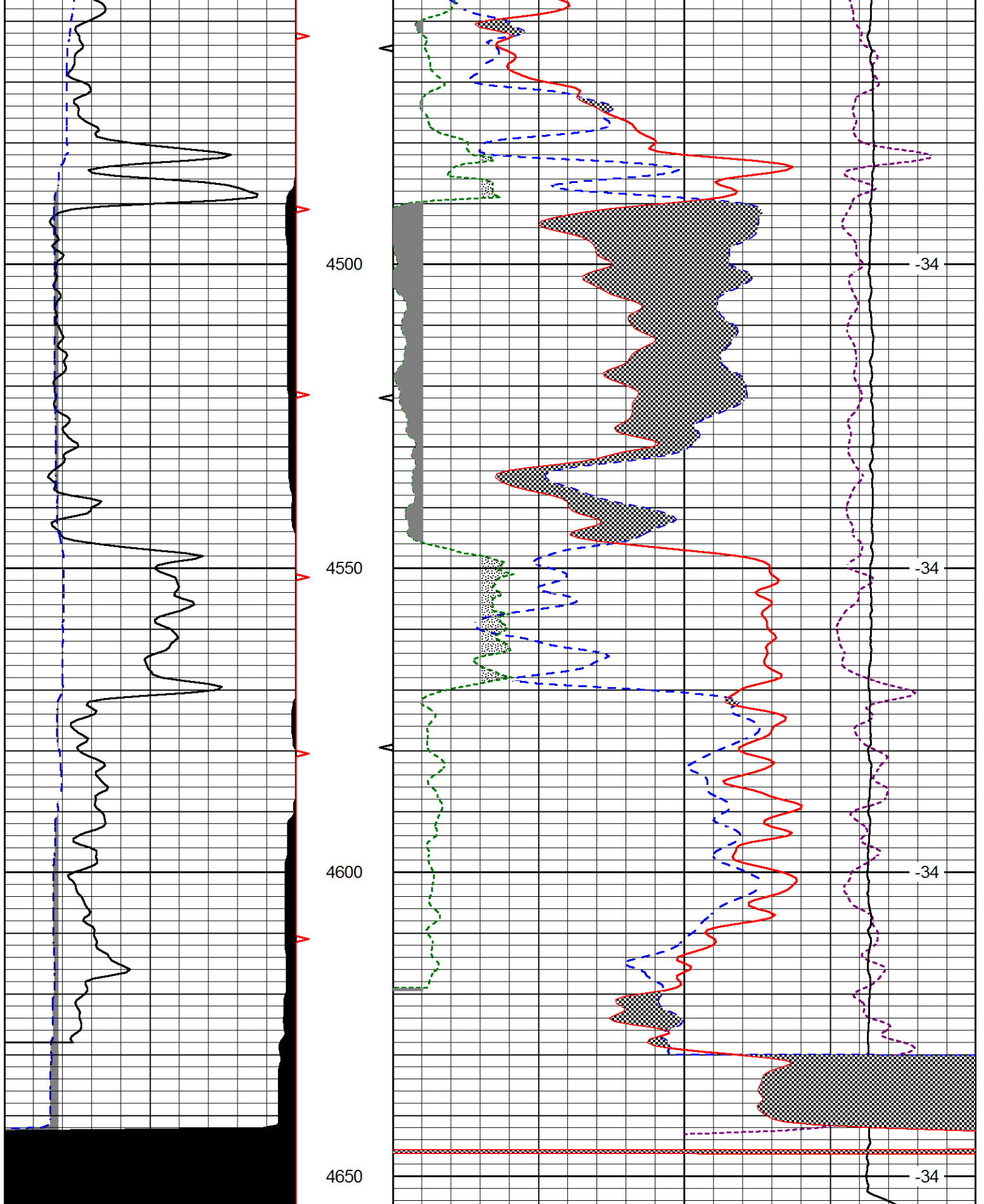
-37

-38









0	Gamma Ray (GAPI)	150
6	Caliper (in)	16

30	CNLS (pu)		-10
30	Compensated Density (2.71 ma) (pu)		-10
10000	Line Tension (lb)		0
2.625	DGA (g/cc)	3.425	-0.25
	Correction (g/cc)		0.25

LSPD



# REPEAT SECTION

Database File griffin\_wood\_2hd.db  
 Dataset Pathname DIL/griffrep  
 Presentation Format cndlspec  
 Dataset Creation Wed Feb 01 16:07:23 2017  
 Charted by Depth in Feet scaled 1:240

0	Gamma Ray (GAPI)	150	30	CNLS (pu)	-10	
6	Caliper (in)	16	30	Compensated Density (2.71 ma) (pu)	-10	
			10000	Line Tension (lb)	0	
				-0.25	Correction (g/cc)	0.25
					LSPD (ft/min)	

