



MICRORESISTIVITY LOG

Company CHARLES N. GRIFFIN
Well WOOD #1
Field TROUSDALE NORTHEAST
County EDWARDS **State** KANSAS

Location: API #: 15-047-21655-00-00
 SW NW SE
 1650' FSL & 2310' FEL
 SEC 22 TWP 26S RGE 16W
Permanent Datum GROUND LEVEL Elevation 2076'
Log Measured From KELLY BUSHING
Drilling Measured From KELLY BUSHING
Other Services CNL/CDL DIL
Elevation 2081'
K.B. N/A
D.F. N/A
G.L. 2076'

Date	1/22/2017
Run Number	ONE
Depth Driller	4630'
Depth Logger	4629'
Bottom Logged Interval	4628'
Top Log Interval	3600'
Casing Driller	8.625" @ 405'
Casing Logger	404'
Bit Size	7.875"
Type Fluid in Hole	CHEMICAL
Salinity, ppm CL	6000
Density / Viscosity	9.3 75
pH / Fluid Loss	10.5 9.6
Source of Sample	FLOWLINE
Rm @ Meas. Temp	0.72 @ 52
Rmt @ Meas. Temp	0.54 @ 52
Rmc @ Meas. Temp	0.97 @ 52
Source of Rmf / Rmc	CHARTS
Rm @ BHT	0.30 @ 124
Operating Rig Time	2 1/2 HOURS
Max Rec. Temp. F	124 DEG F
Equipment Number	91
Location	COLBY
Recorded By	T. MARTIN
Witnessed By	BRUCE REED

<<< Fold Here >>>

All interpretations are opinions based on inferences from electrical or other measurements and Pioneer Wireline Services, LLC cannot and does not guarantee the accuracy or correctness of any interpretation, and Pioneer Wireline Services, LLC will not be liable or responsible for any loss, costs, damages, or expenses incurred or sustained by anyone resulting from any interpretation made by any of our officers, agents or employees.

Comments

N/A DENOTES NOT AVAILABLE OR NON-APPLICABLE.

TROUSDALE, KS, 1/2 S TO T RD, 2 E TO 290TH,
3 S, 1/2 W INTO ON S SIDE OF TREES, 1/4 N TO LOCATION

Log Measured From: KELLY BUSHING 5 Ft. Above Permanent Datum

THANK YOU FOR USING PIONEER ENERGY SERVICES
www.pioneerenergy.com 785-625-3858

Your Pioneer Energy Services Crew		This Log Record Was Witnessed By	
Engineer: T. MARTIN	Operator:	Primary Witness: BRUCE REED	Secondary Witness: ELI FELTS
Operator:	Operator:	Secondary Witness:	Secondary Witness:

Sensor	Offset (ft)	Schematic	Description	Length (ft)	O.D. (in)	Weight (lb)
GR	40.58		GR-M&W (89)	3.00	3.50	50.00
CNLSC CNSSC	37.48 36.73		CNT-M&W (207-MW)	5.50	3.50	100.00
LSD DCAL SSD	28.43 28.42 27.93		CDL-M&W (90-1031)	8.50	4.00	250.00
MCAL MI MN	19.83 19.83 19.83		ML-PSIML (PSI-01) GO Micro log tools converted to Simplec electronics	7.58	4.00	65.00
RLL3F RLL3	15.80 15.80		DIL-M&W (PSI 13)	18.50	3.50	220.00
CILD	8.00					
CILM	4.70					
SP	0.20					

Dataset: griffin_wood_#1.db: field/well/stckml/pass4.1
 Total length: 43.08 ft
 Total weight: 685.00 lb
 O.D.: 4.00 in

Log Variables

DatabaseC:\ProgramData\Warrior\Data\griffin_wood_#1.db

Dataset field/well/stckml/pass4.1/_vars_

Top - Bottom

M	A	SZCOR	NPORSEL	FLUIDDEN g/cc	MATRXDEN g/cc	SPSHIFT mV	SNDERRM mmho/m
2	1	Off	Limestone	1	2.71	70	0
SNDERR mmho/m	SRFTEMP degF	CASETHCK in	CASEOD in	PERFS	TDEPTH ft	BOTTEMP degF	BOREID in
0	45	0	5.5	0	4629	124	7.875



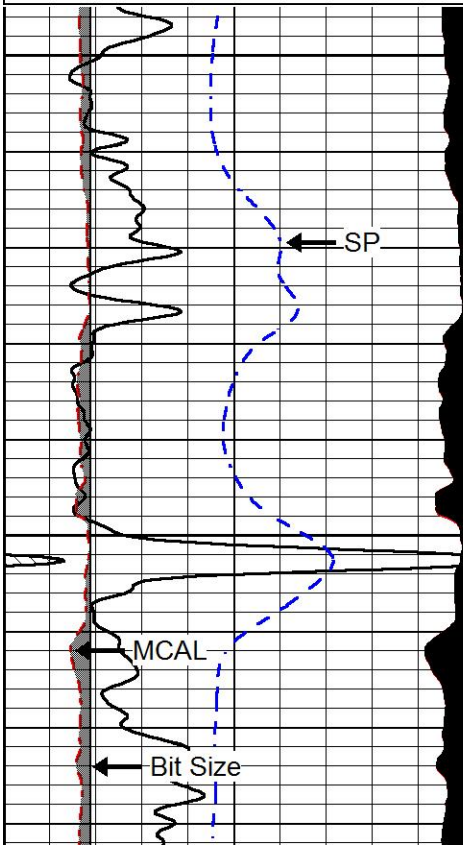
PIONEER
Pioneer Energy Services

MAIN PASS

Database File griffin_wood_#1.db
 Dataset Pathname stckml/pass4.1
 Presentation Format micro
 Dataset Creation Sun Jan 22 19:25:51 2017
 Charted by Depth in Feet scaled 1:240

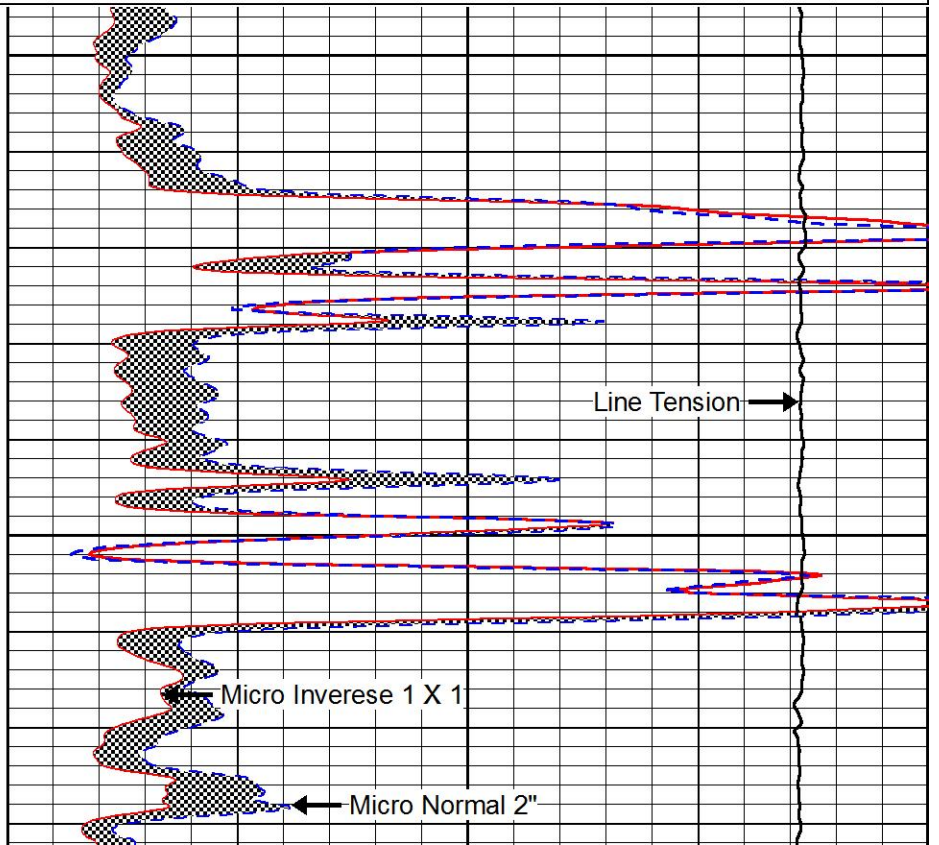
0	Gamma Ray (GAPI)	150
6	MCAL (in)	16
2.875	mcals (in)	7.875
6	Bit Size (in)	16
-200	SP (mV)	0

0	Micro Inverse 1 X 1 (Ohm-m)	40
0	Micro Normal 2" (Ohm-m)	40
10000	Line Weight (lb)	0



3600

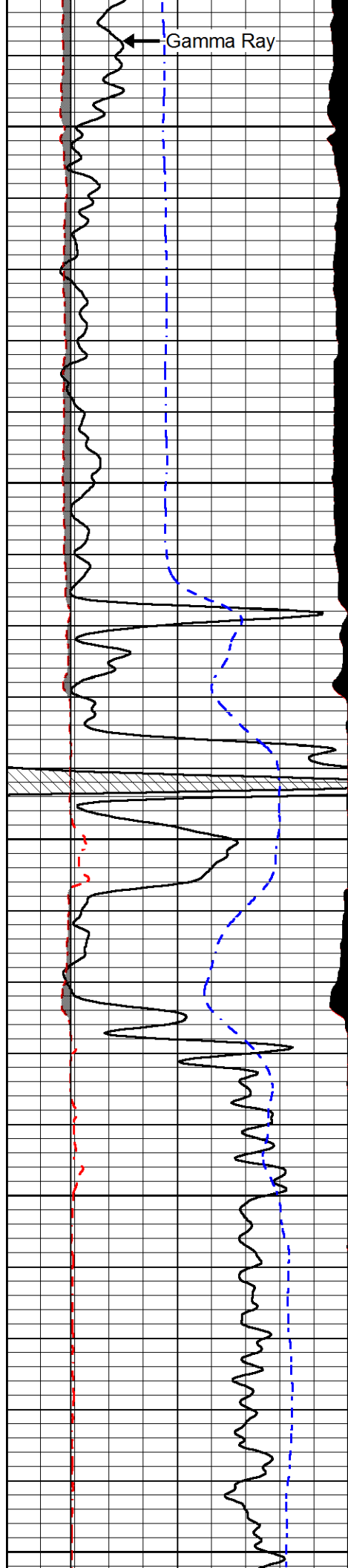
3650



Line Tension →

← Micro Inverse 1 X 1

← Micro Normal 2"



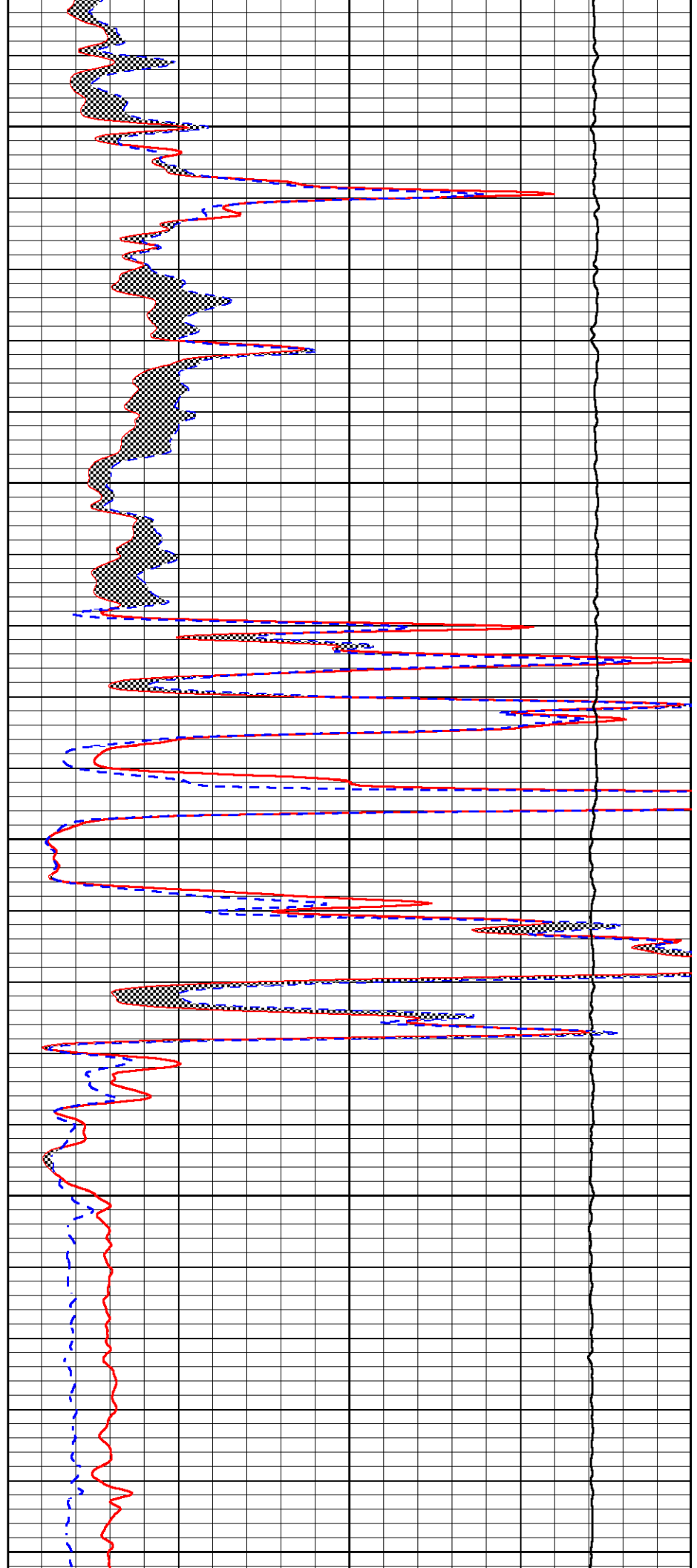
3700

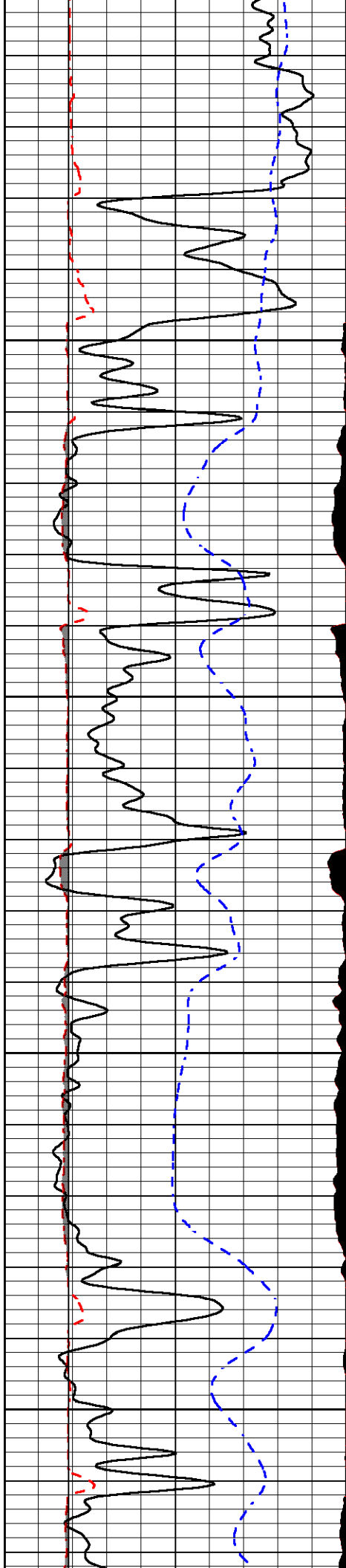
3750

3800

3850

3900



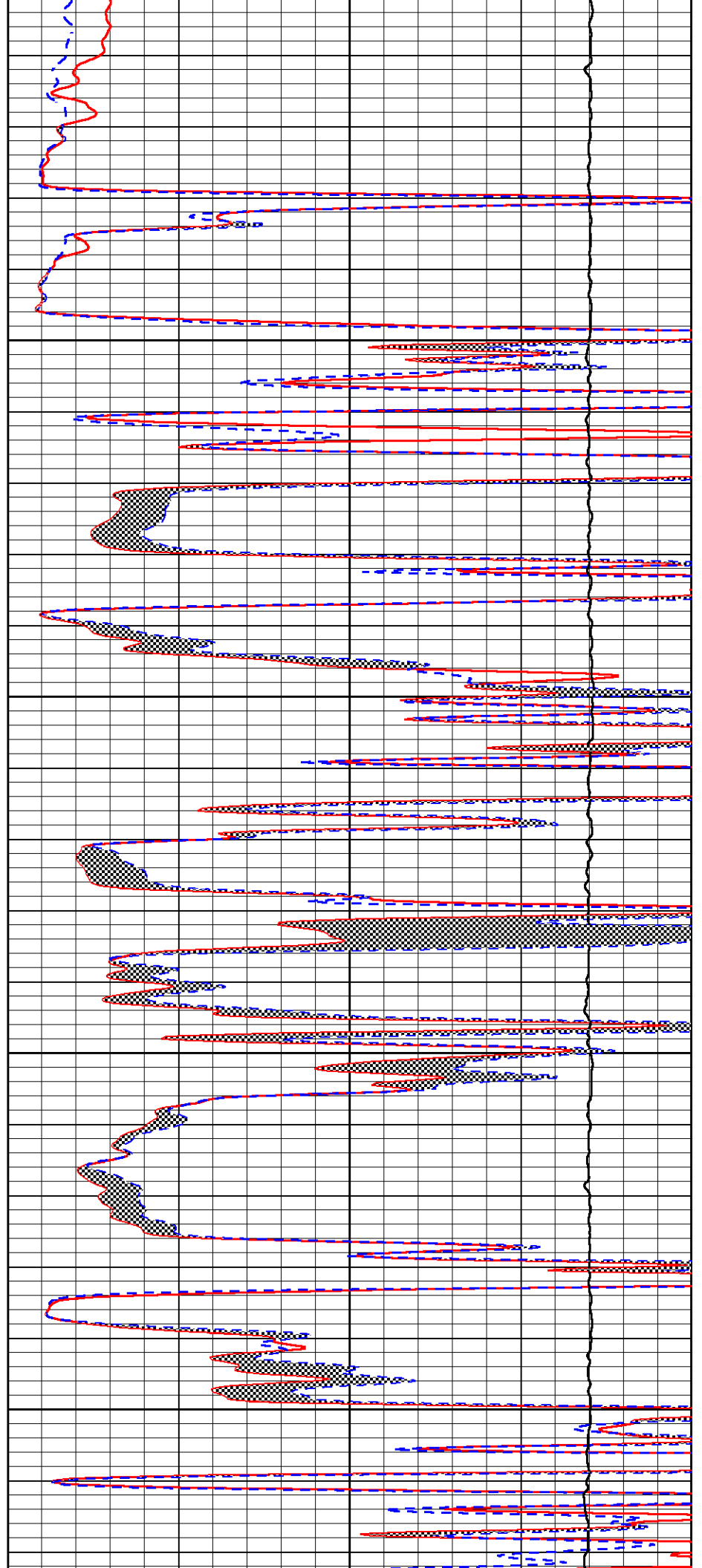


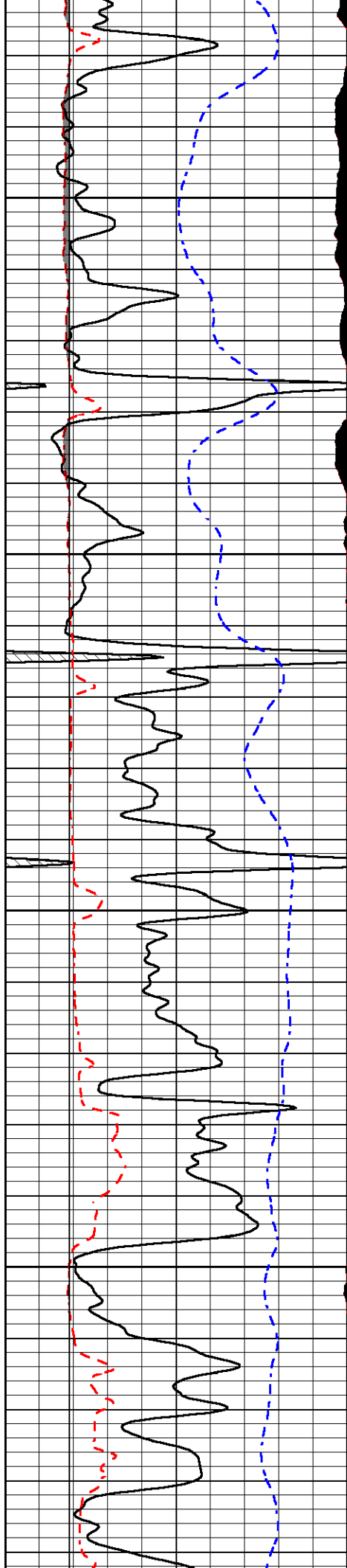
3950

4000

4050

4100



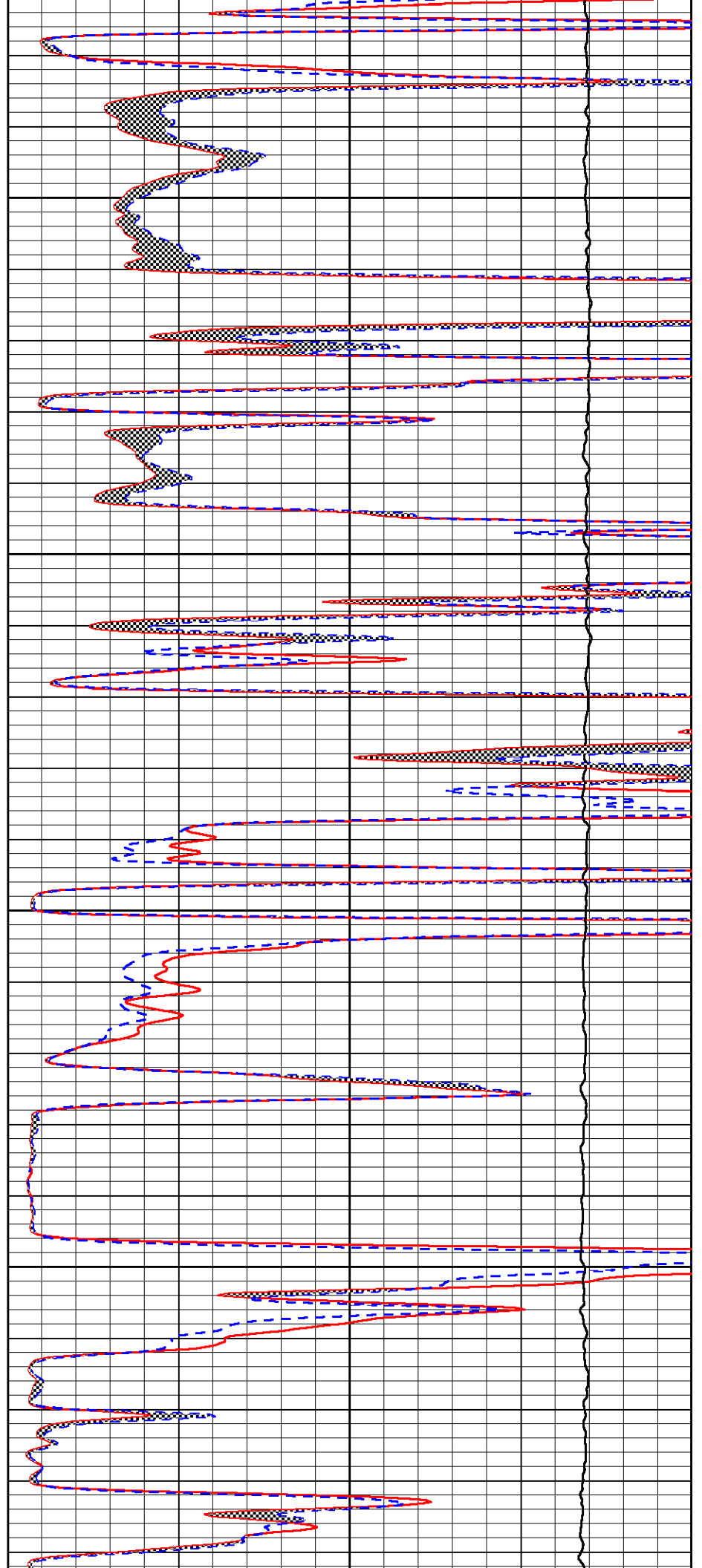


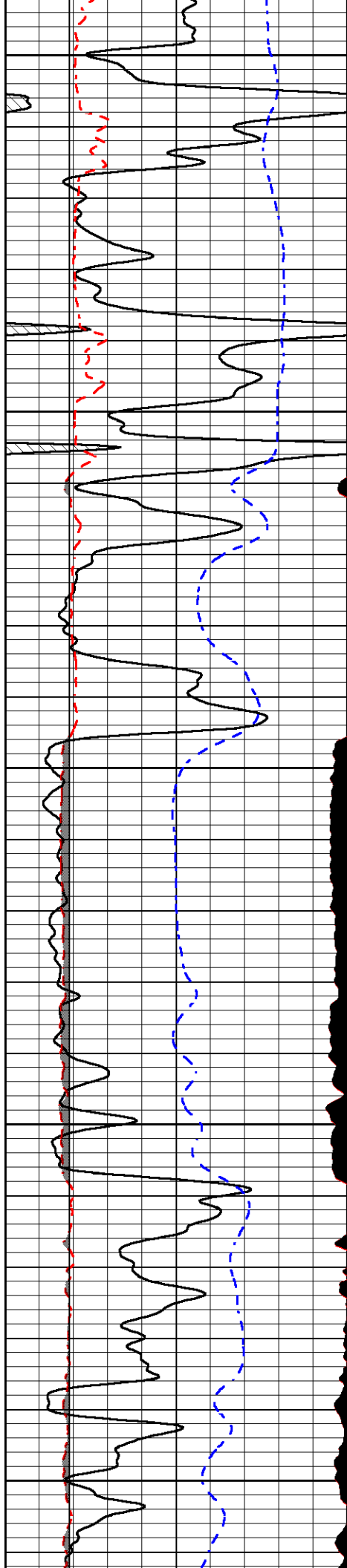
4150

4200

4250

4300





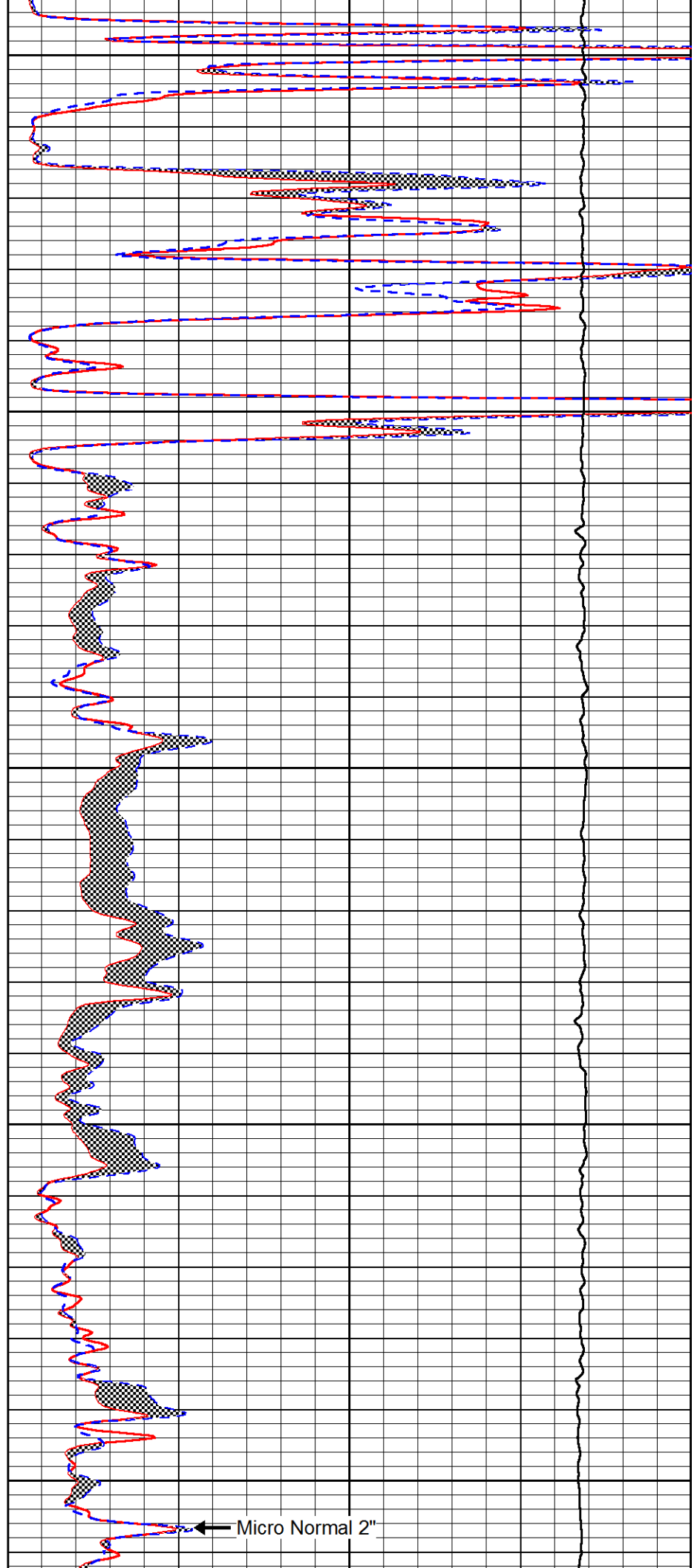
4350

4400

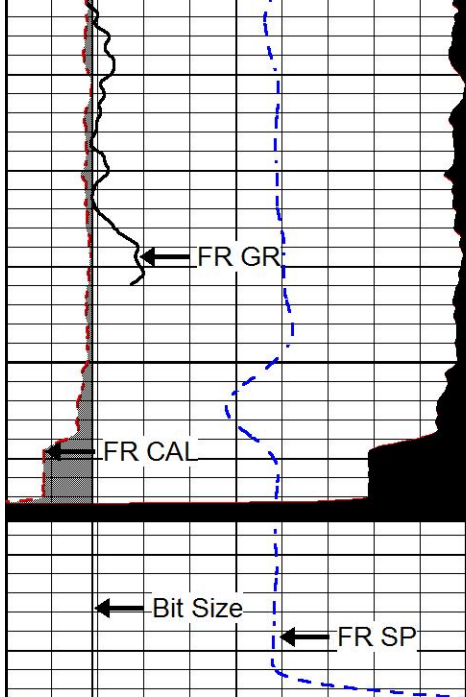
4450

4500

4550

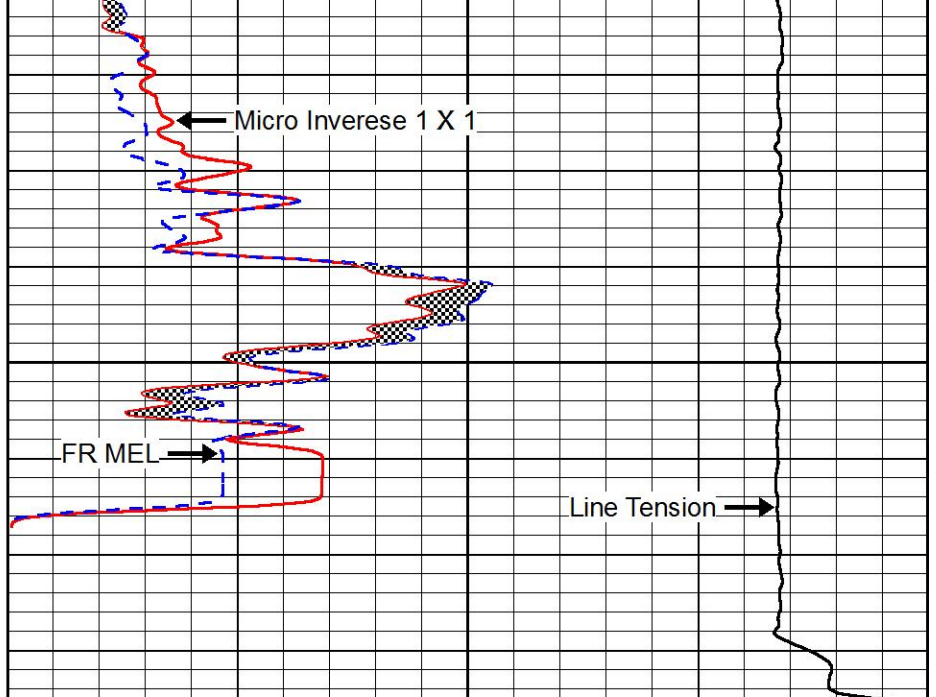


← Micro Normal 2"



0	Gamma Ray (GAPI)	150
6	MCAL (in)	16
2.875	mcal (in)	7.875
6	Bit Size (in)	16
-200	SP (mV)	0

4600



0	Micro Inverse 1 X 1 (Ohm-m)	40
0	Micro Normal 2" (Ohm-m)	40
10000	Line Weight (lb)	0



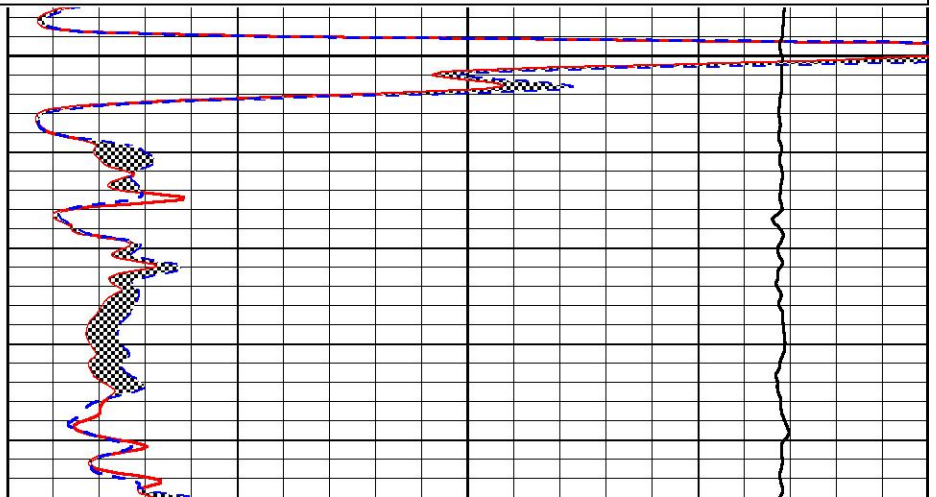
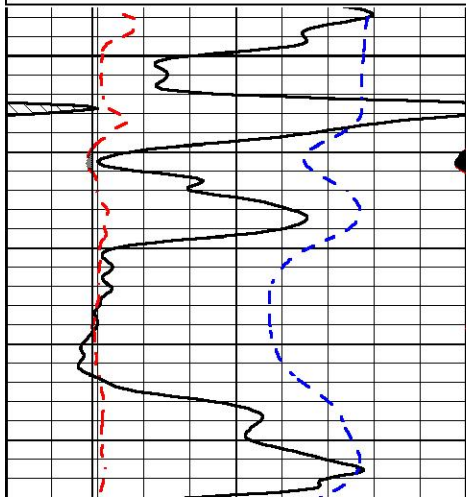
REPEAT SECTION

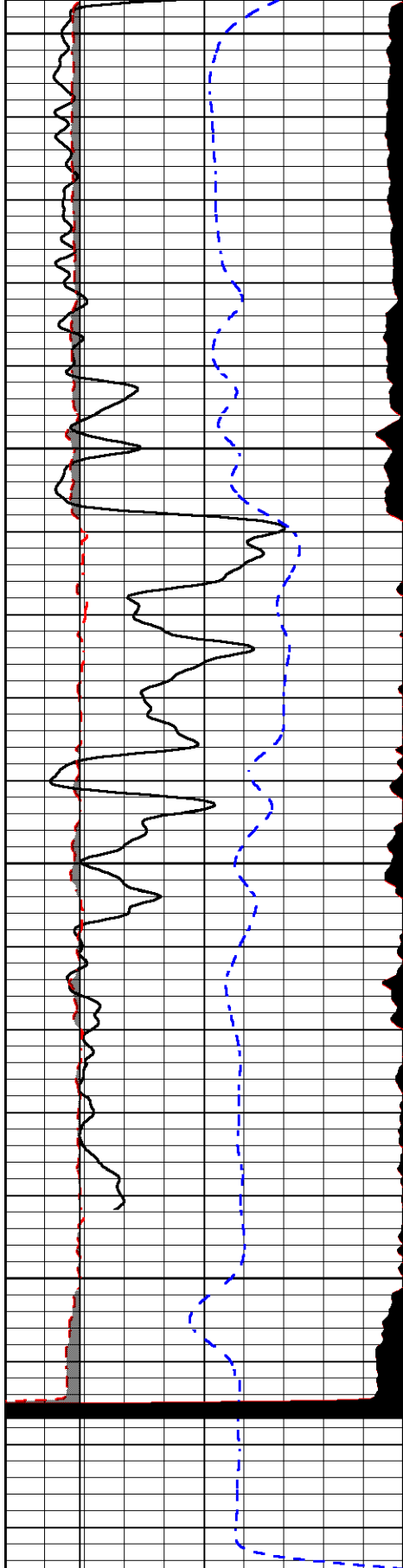
Database File griffin_wood_#1.db
 Dataset Pathname stckml/pass2.1
 Presentation Format micro
 Dataset Creation Sun Jan 22 19:03:32 2017
 Charted by Depth in Feet scaled 1:240

0	Gamma Ray (GAPI)	150
6	MCAL (in)	16
2.875	mcal (in)	7.875
6	Bit Size (in)	16
-200	SP (mV)	0

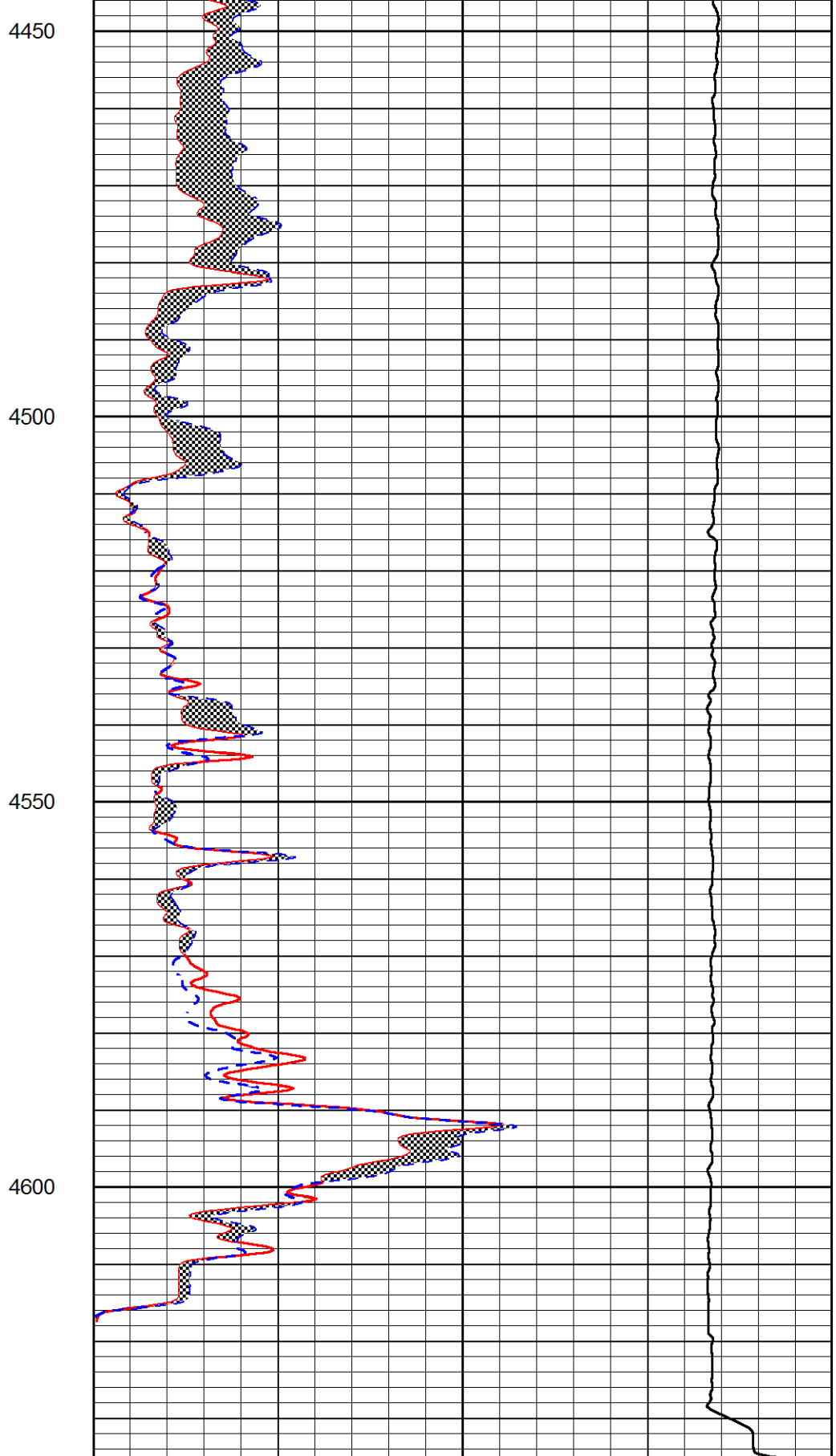
0	Micro Inverse 1 X 1 (Ohm-m)	40
0	Micro Normal 2" (Ohm-m)	40
10000	Line Weight (lb)	0

4400





0	Gamma Ray (GAPI)	150
6	MCAL (in)	16
2.875	mcal (in)	7.875
6	Bit Size (in)	16
-200	SP (mV)	0



0	Micro Inverse 1 X 1 (Ohm-m)	40
0	Micro Normal 2" (Ohm-m)	40
10000	Line Weight (lb)	0

Calibration Report

Database File griffin_wood_#1.db
 Dataset Pathname stckml/pass4.1
 Dataset Creation Sun Jan 22 19:25:51 2017

Dual Induction Calibration Report

Serial-Model: PSI 13-M&W
 Calibration Performed: Mon Jan 02 18:08:07 2017

Loop:	Readings		References			Results	
	Air	Loop	Air	Loop		Gain	Offset
Deep	166.796	835.089	0.000	255.800	mmho/m	0.950	-38.000
Medium	142.009	1348.560	0.000	255.800	mmho/m	0.830	-35.000

Microlog Calibration Report

Serial-Model: PSI-01-PSIML
 Performed: Mon Jan 02 18:08:17 2017

	Readings		References			Results	
	Zero	Cal	Zero	Cal		m	b
Normal	0.0000	1.0000	0.0000	1.0000	Ohm-m	18000.0000	0.1000
Inverse	0.0000	1.0000	0.0000	1.0000	Ohm-m	20000.0000	0.2000
Caliper	1.0001	1.1397	6.5000	18.5000	in	70.0000	-65.8500

Compensated Density Calibration Report

Serial-Model: 90-1031-M&W
 Source / Verifier: 16955B / 2ci
 Master Calibration Performed: Mon Jan 02 18:08:22 2017

Master Calibration

	Density		Far Detector	Near Detector	
Magnesium	1.755	g/cc	5174.18	6425.27	cps
Aluminum	2.670	g/cc	963.17	4037.42	cps
Spine Angle = 74.55			Density/Spine Ratio = 0.525		
	Size		Reading		
Small Ring	6.00	in	1.83		
Large Ring	16.00	in	1.48		

Compensated Neutron Calibration Report

Serial Number: 207-MW
 Tool Model: M&W
 Calibration Performed: Mon Jan 2 10:30:30 2017

Detector	Readings	Target	Normalization
Short Space	6240.00 cps	1000.00 cps	1.6025
Long Space	460.00 cps	1000.00 cps	1.9500

Gamma Ray Calibration Report

Serial Number:	89	
Tool Model:	M&W	
Calibration Performed:	Mon Jan 02 18:08:34 2017	
Calibrator Value:	1.0	GAPI
Background Reading:	0.0	cps
Calibrator Reading:	1.0	cps
Sensitivity:	0.6000	GAPI/cps



PIONEER

Pioneer Energy Services

Company	CHARLES N. GRIFFIN
Well	WOOD #1
Field	TROUSDALE NORTHEAST
County	EDWARDS
State	KANSAS