



DUAL RECEIVER CEMENT BOND LOG

Company WOOLSEY OPERATING CO Well HOSTETTLER 1 SWD OWWO Field HARPER County HARPER State KANSAS	Company WOOLSEY OPERATING CO Well HOSTETTLER 1 SWD OWWO (WEST WELLHEAD) Field County HARPER State KANSAS Location: 339' FSL 2069' FWL API #: 15-077-21761-01-01 SEC 30 TWP 31S RGE 7W Permanent Datum GROUND LEVEL Elevation 1496 Log Measured From DRILL FLOOR 21.88 AGL Drilling Measured From DRILL FLOOR
	Other Services Elevation K.B. NA D.F. 1527 G.L. 1496

Date	3/12/19	
Run Number		
Depth Driller		
Depth Logger	4780	
Bottom Logged Interval	4780	
Top Log Interval	4000	
Open Hole Size		
Type Fluid	WATER	
Density / Viscosity		
Max. Recorded Temp.		
Estimated Cement Top		
Time Well Ready		
Time Logger on Bottom		
Equipment Number	8728	
Location	HUTCHINSON	
Recorded By	CHILDRESS	
Witnessed By	BRAD TATRO	

Borehole Record				Tubing Record			
Run Number	Bit	From	To	Size	Weight	From	To

Casing Record	Size	Wgt/Ft	Top	Bottom
Surface String				
Prot. String				
Production String				
Liner				

<<< Fold Here >>>

All interpretations are opinions based on inferences from electrical or other measurements and we cannot and do not guarantee the accuracy or correctness of any interpretation, and we shall not, except in the case of gross or willful negligence on our part, be liable or responsible for any loss, costs, damages, or expenses incurred or sustained by anyone resulting from any interpretation made by any of our officers, agents or employees. These interpretations are also subject to our general terms and conditions set out in our current Price Schedule.

Comments

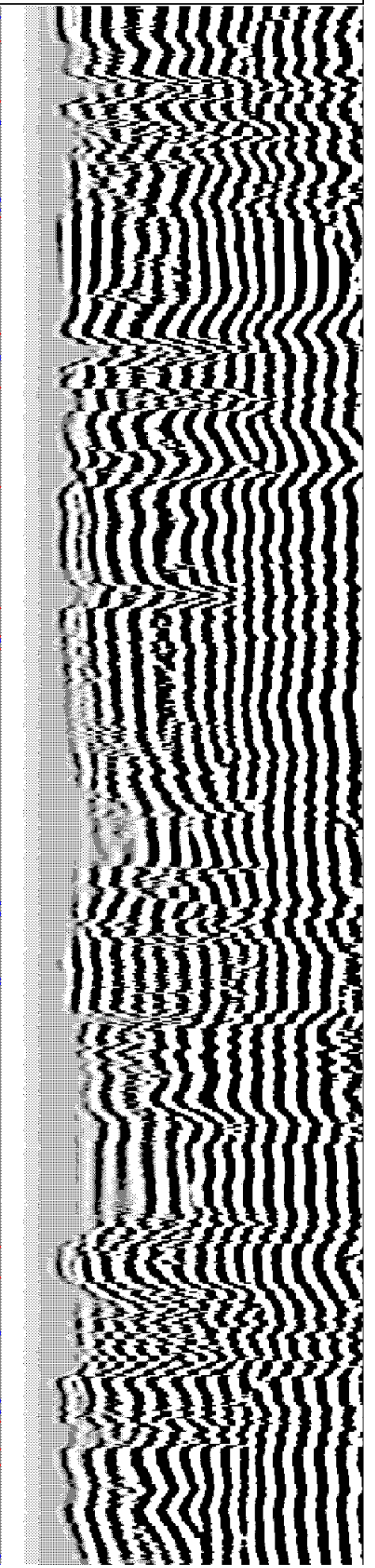
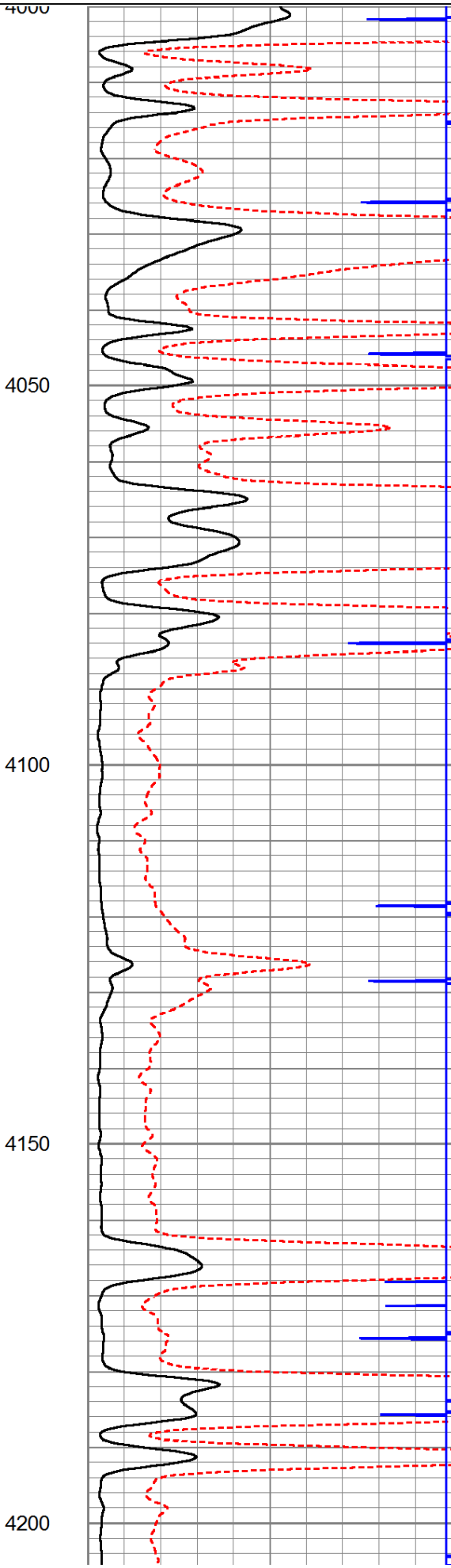
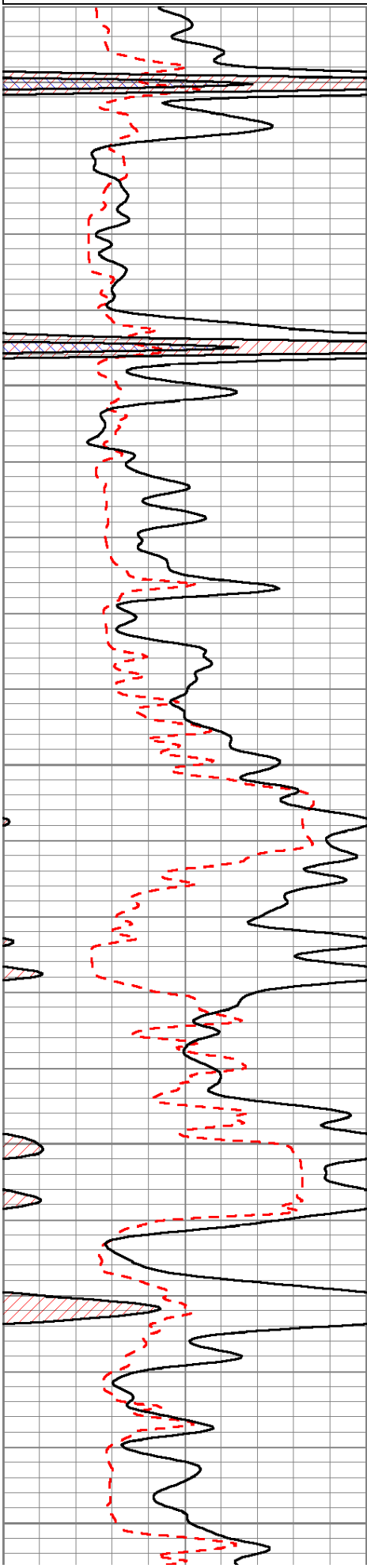
Database File: hostetler 2 h mar 2019.db
 Dataset Pathname: pass3.5
 Presentation Format: cbl02
 Dataset Creation: Tue Mar 12 15:04:48 2019
 Charted by: Depth in Feet scaled 1:240

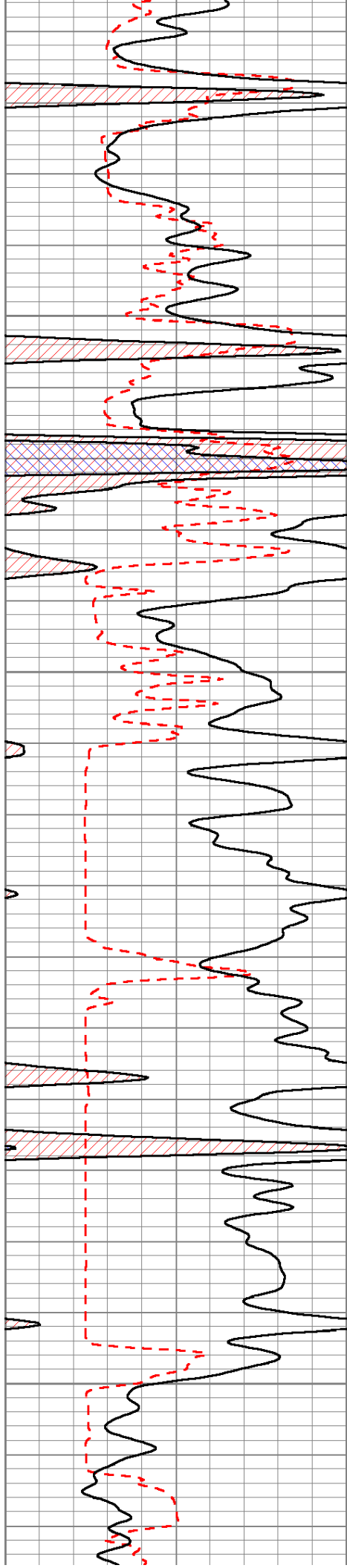
200	Travel Time (usec)	1000
0	Gamma Ray (GAPI)	150

0	Amplified Amplitude (mV)	20
0	Amplitude (mV)	100

100	5FT VDL	1000
-----	---------	------

60	Collar Locator	-1
----	----------------	----



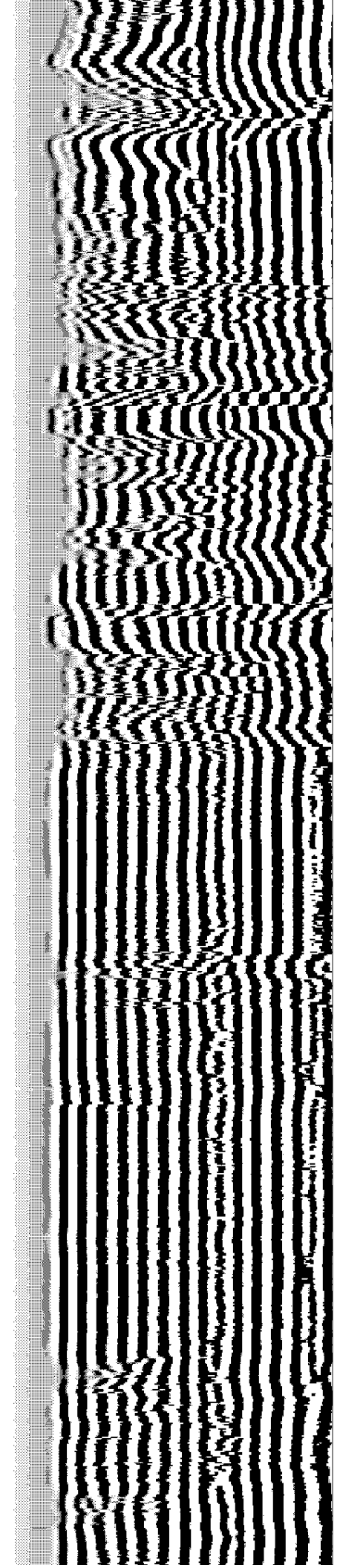
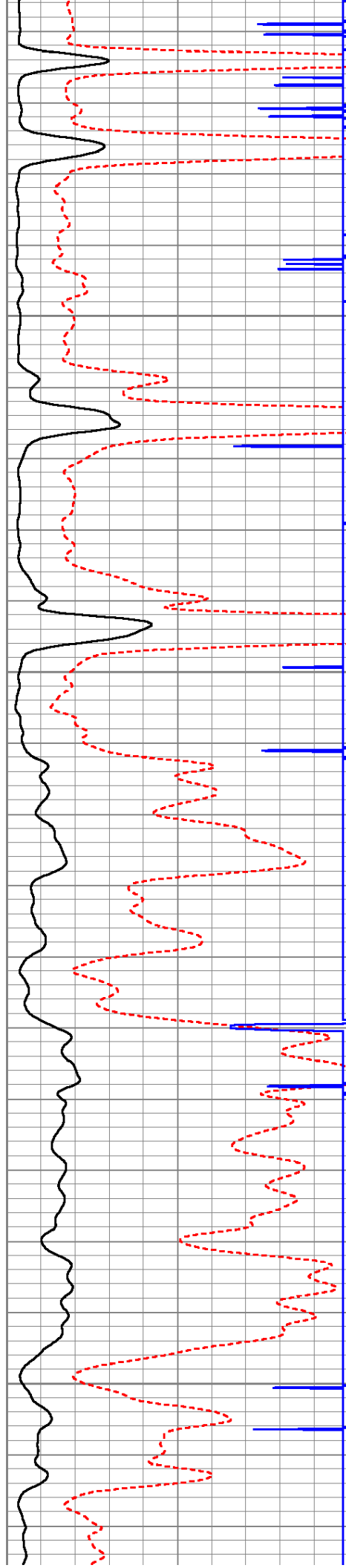


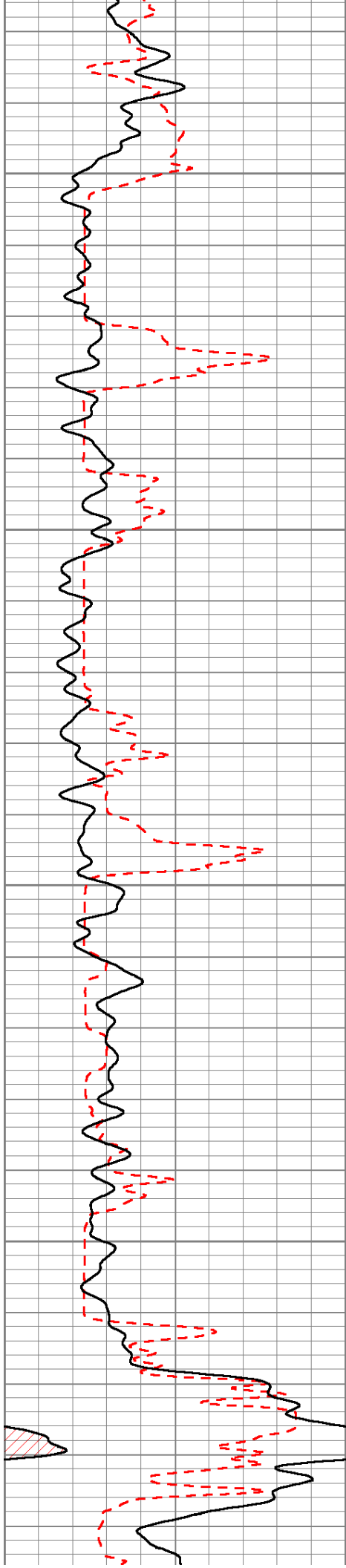
4250

4300

4350

4400





4450

4500

4550

4600

