



MICRO LOG

Company MAI OIL OPERATIONS, INC.
 Well RICHARDS #15
 Field MENDOTA
 County ELLIS State KANSAS

Location: API #: 15-051-26943-0000
 680' FSL & 1915' FEL
 SW-NE-SW-SE
 SEC 6 TWP 11S RGE 20W
 Permanent Datum GROUND LEVEL Elevation 2090
 Log Measured From KELLY BUSHING 8' A.G.L
 Drilling Measured From KELLY BUSHING
 Other Services CDL/CNL DIL
 Elevation K.B. 2098 D.F. 2096 G.L. 2090

Date	1/21/19		
Run Number	TWO		
Depth Driller	3770		
Depth Logger	3770		
Bottom Logged Interval	3768		
Top Log Interval	3000		
Casing Driller	8 5/8" @ 261		
Casing Logger	260		
Bit Size	7 7/8"		
Type Fluid in Hole	CHEMICAL MUD	CHLORIDES 2900 PPM	
Density / Viscosity	9.4/57		
pH / Fluid Loss	10.0/8.0		
Source of Sample	FLOWLINE		
Rm @ Meas. Temp	.80 @ 65F		
Rmt @ Meas. Temp	.60 @ 65F		
Rmc @ Meas. Temp	.96 @ 65F		
Source of Rmf / Rmc	MEASUREMENT		
Rm @ BHT	.45 @ 114F		
Time Circulation Stopped	2 HOURS		
Time Logger on Bottom	////		
Maximum Recorded Temperature	114F		
Equipment Number	3802		
Location	HAYS, KANSAS		
Recorded By	JASON CAPPELLUCCI		
Witnessed By	WYATT URBAN		

<<< Fold Here >>>

All interpretations are opinions based on inferences from electrical or other measurements and we cannot and do not guarantee the accuracy or correctness of any interpretation, and we shall not, except in the case of gross or willful negligence on our part, be liable or responsible for any loss, costs, damages, or expenses incurred or sustained by anyone resulting from any interpretation made by any of our officers, agents or employees. These interpretations are also subject to our general terms and conditions set out in our current Price Schedule.

Comments

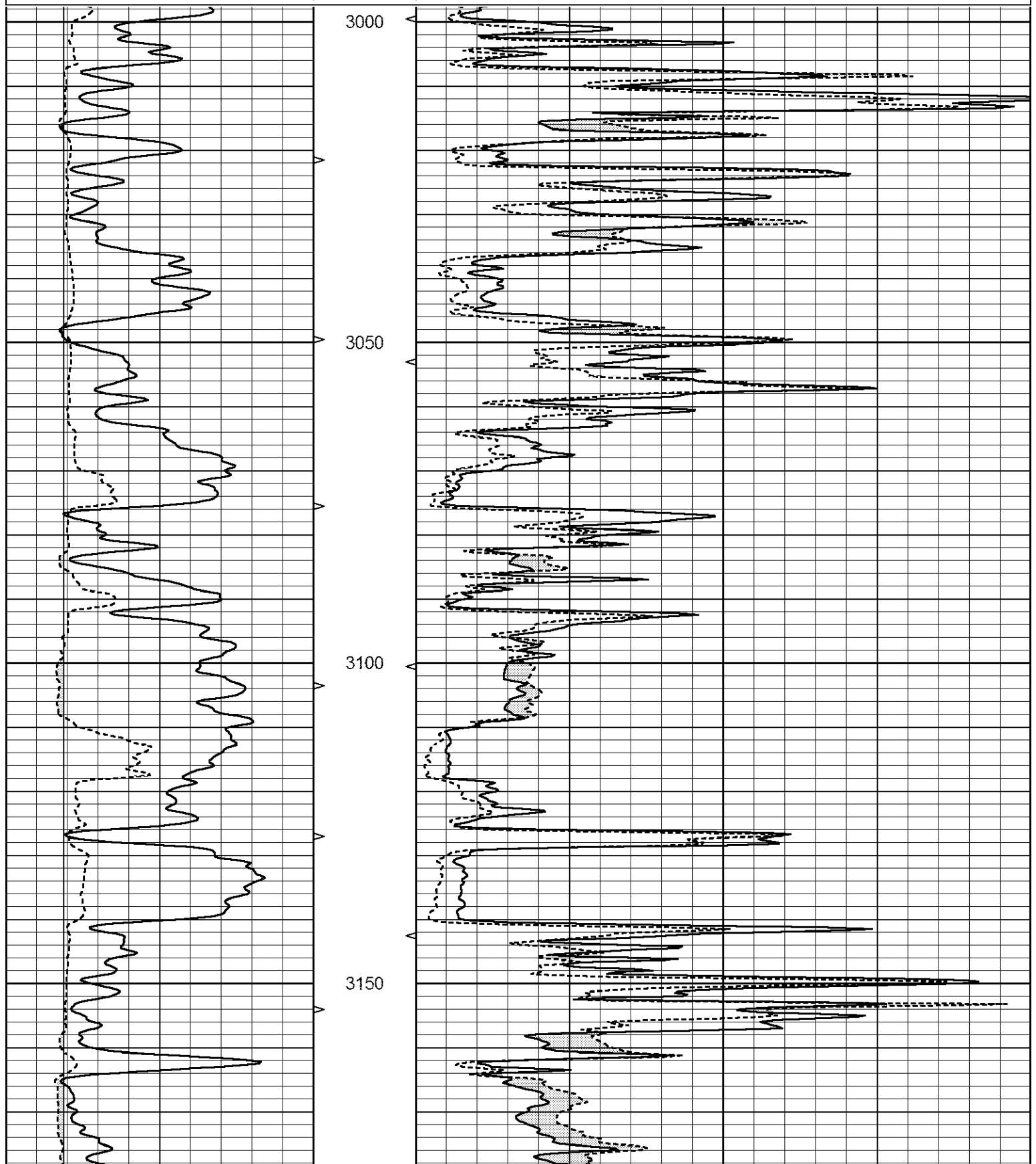
THANK YOU FOR USING ELI WIRELINE SERVICES, HAYS, KS. (785) 628-6395
 DIRECTIONS
 ELLIS, KS. - NORTH TO COUNTY LINE - 3 WEST FROM THE CURVE WEST
 TO RD. 100 - 1 SOUTH - EAST INTO

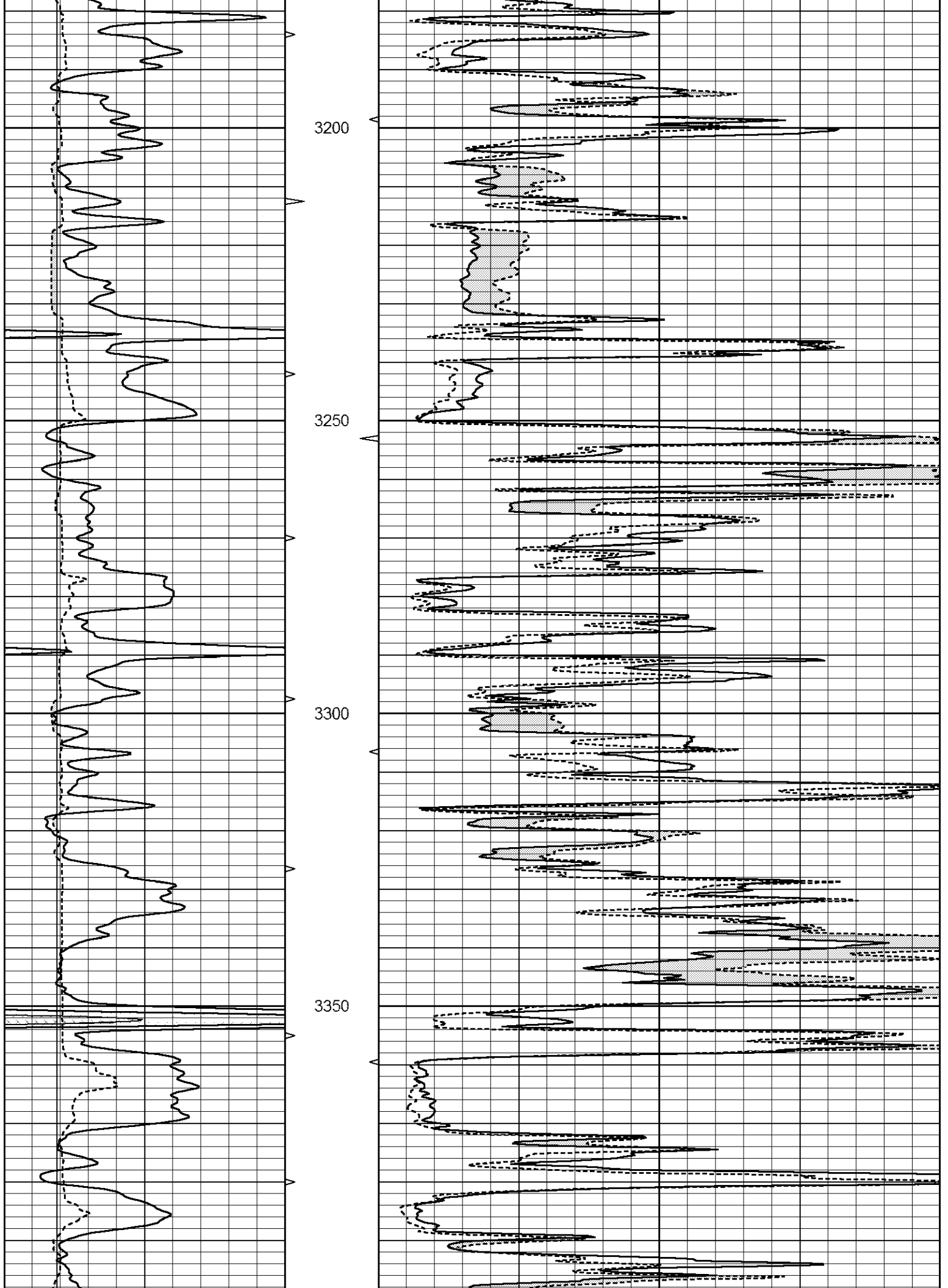


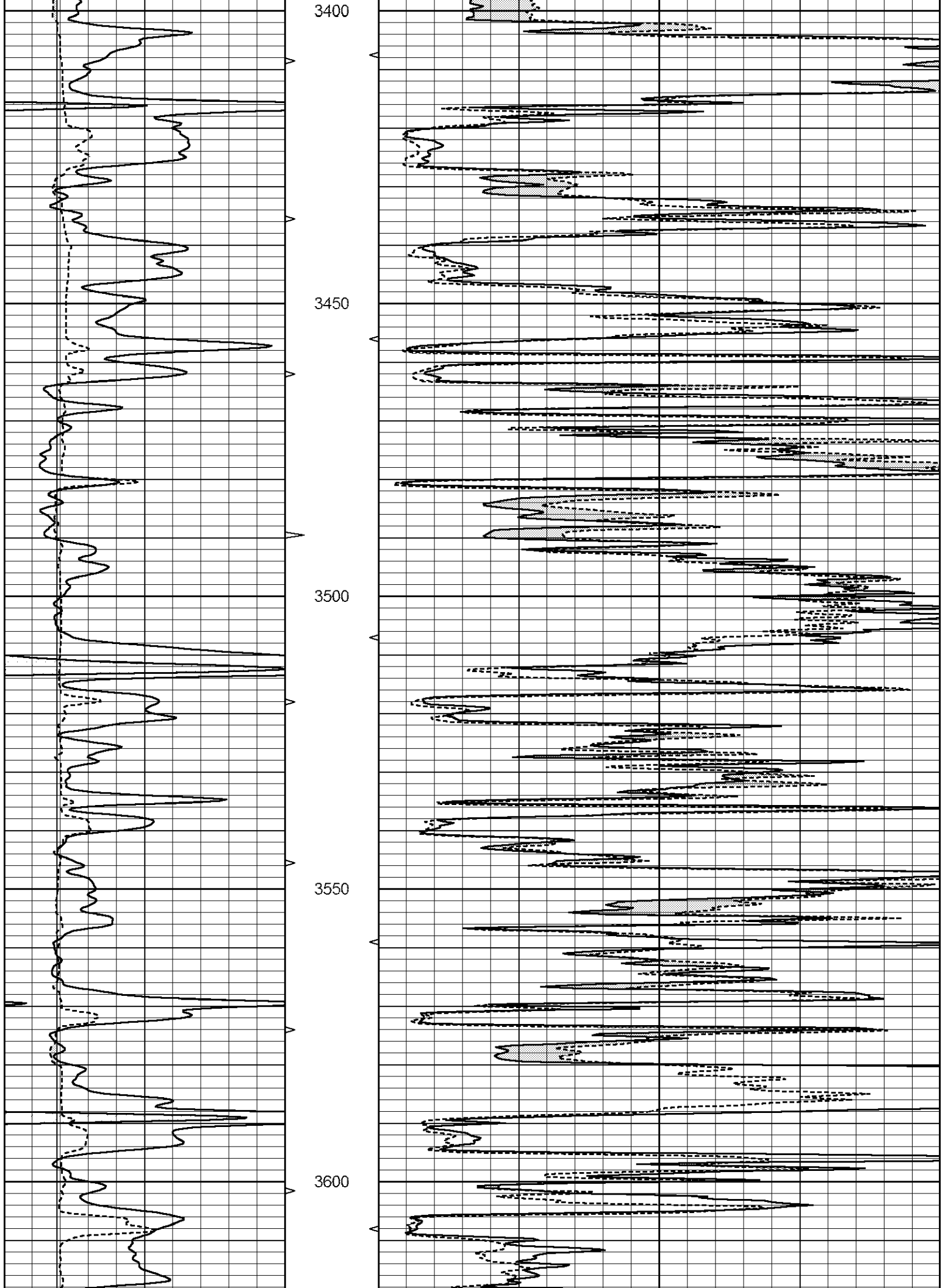
MAIN SECTION

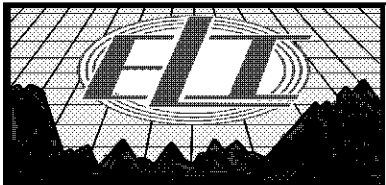
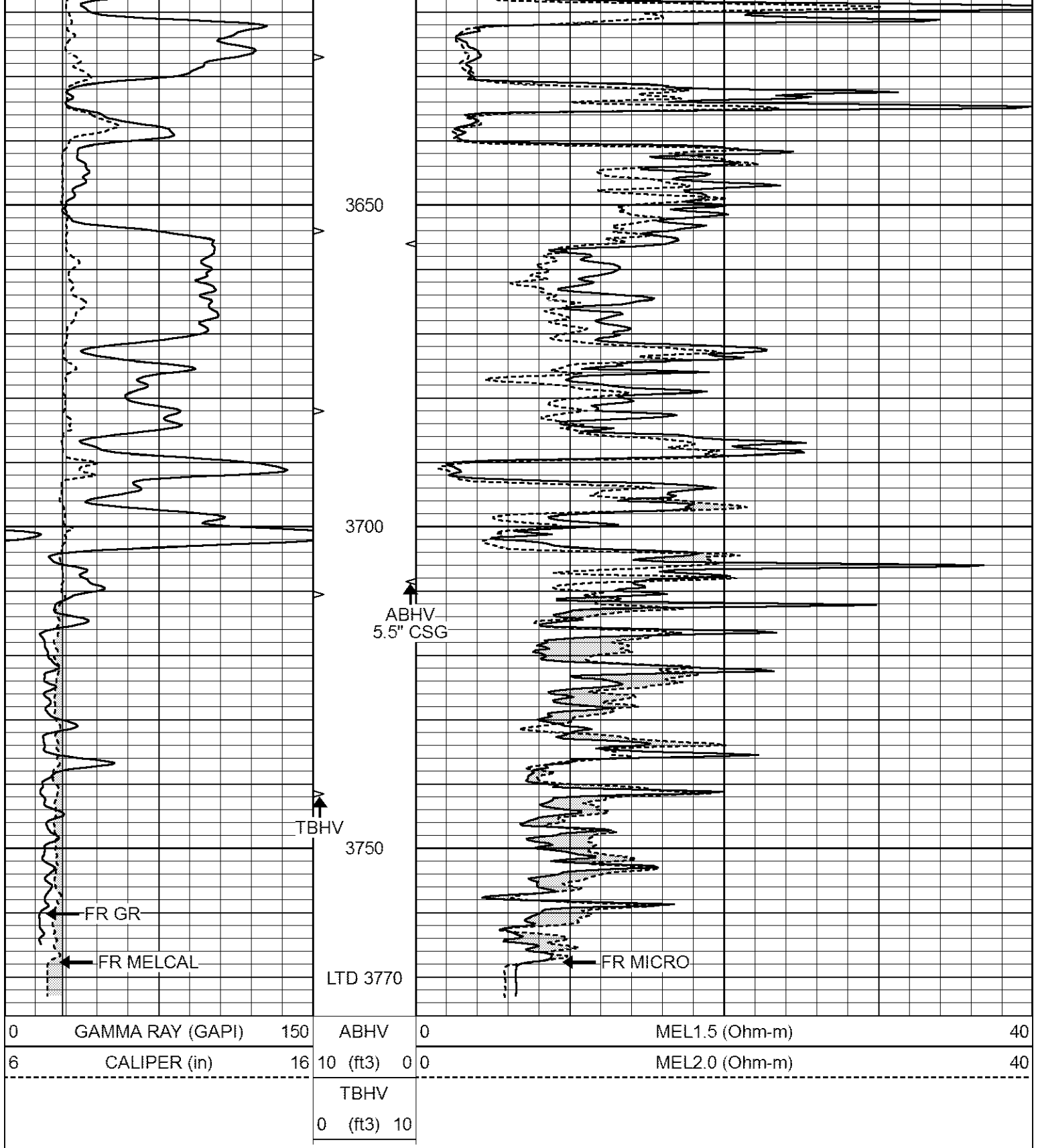
Database File 3437ddn8.db
 Dataset Pathname pass6.1
 Presentation Format _micro
 Dataset Creation Mon Jan 21 20:02:47 2019
 Charted by Depth in Feet scaled 1:240

0	GAMMA RAY (GAPI)	150	ABHV	0	MEL1.5 (Ohm-m)	40
6	CALIPER (in)	16	10 (ft3)	0 0	MEL2.0 (Ohm-m)	40
			TBHV			
			0 (ft3)	10		









REPEAT SECTION

Database File 3437ddn8.db
 Dataset Pathname pass5.1
 Presentation Format _micro
 Dataset Creation Mon Jan 21 20:00:32 2019
 Charted by Depth in Feet scaled 1:240

0 GAMMA RAY (GAPI) 150

ABHV

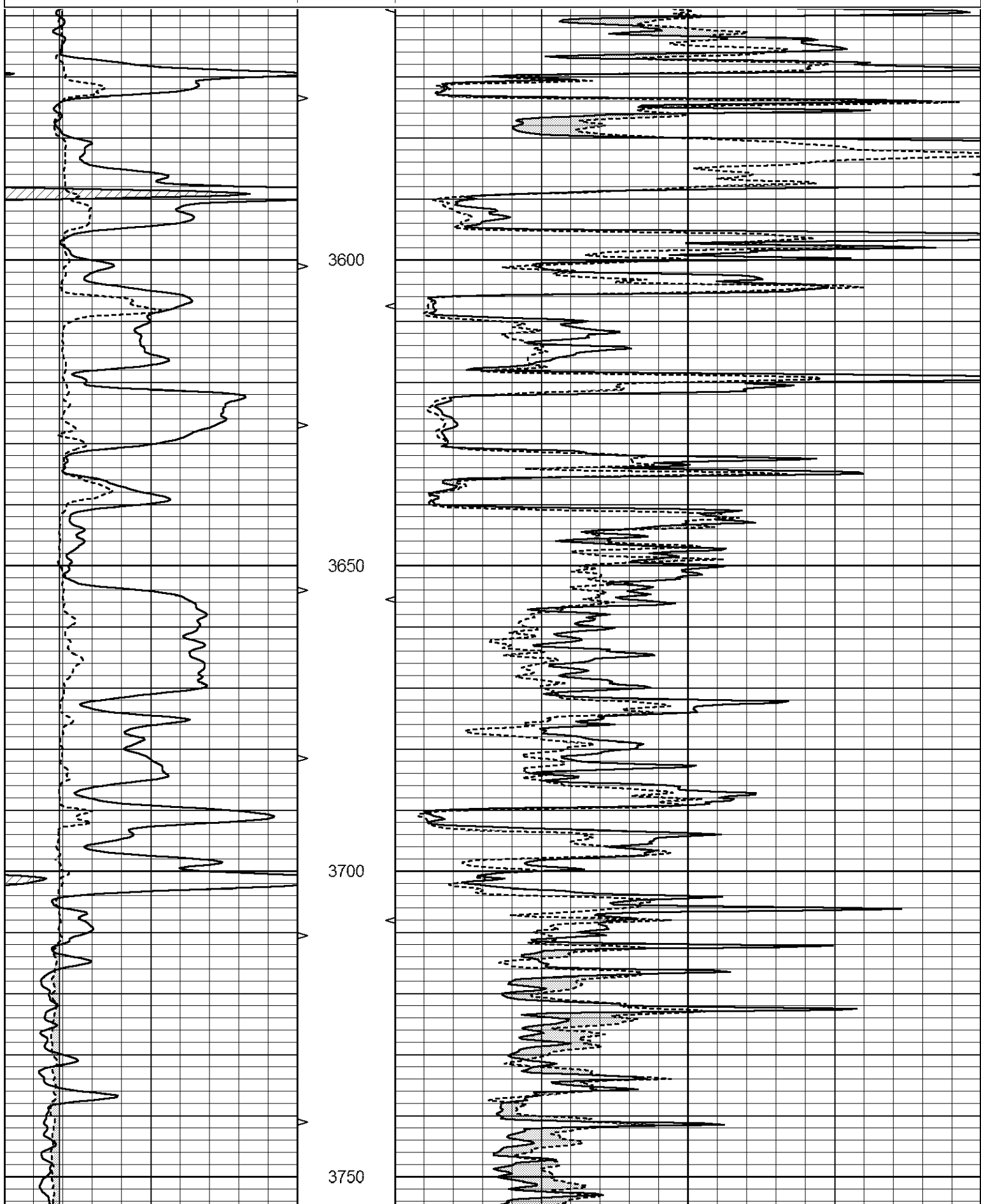
0 MEL1.5 (Ohm-m) 40

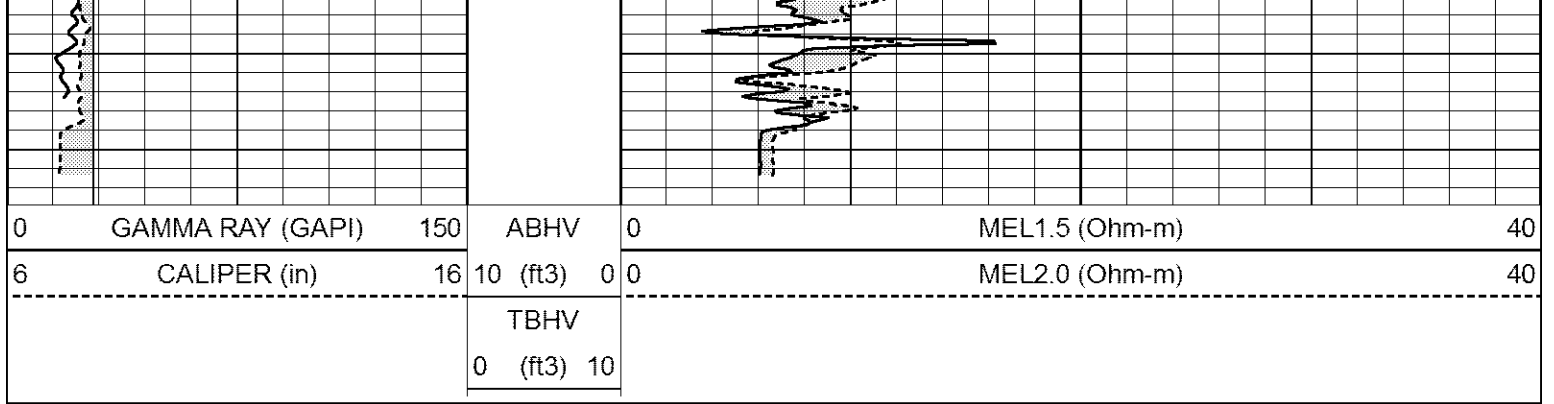
6 CALIPER (in) 16

10 (ft3) 0 0

MEL2.0 (Ohm-m) 40

TBHV
0 (ft3) 10





Calibration Report

Database File 3437ddn8.db
 Dataset Pathname pass5.1
 Dataset Creation Mon Jan 21 20:00:32 2019

MICRO_USR Calibration Report

Serial Number: 070911
 Tool Model: ProbeL
 Performed: Wed Jan 16 16:21:21 2019

Caliper Calibration: Gain=3.755 Offset=2.850

References	Low Cal	High Cal
Readings	8.000	14.000
	1.451	3.049

1.5" Calibration: Gain=37.000 Offset=0.000

References	Low Cal	High Cal
Readings	0.000	20.000
	0.004	0.843

2" Calibration: Gain=65.000 Offset=-1.650

References	Low Cal	High Cal
Readings	0.000	20.000
	0.021	0.810

Microlog Calibration Report

Serial-Model: 070911-ProbeL
 Performed: Sat Apr 11 01:13:01 2015

	Readings			References			Results	
	Zero	Cal		Zero	Cal		m	b
Normal	0.0002	0.4836	V	0.0000	10.0000	Ohm-m	20.6908	-0.0051
Inverse	0.0018	0.6297	V	0.0000	10.0000	Ohm-m	15.9263	-0.0282
Caliper	0.0000	1.0000	V	0.0000	1.0000	in	1.0000	0.0000

Gamma Ray Calibration Report

Serial Number: 070558
 Tool Model: Probe1
 Performed: Sat Dec 08 10:58:44 2018

Calibrator Value: 1.0 GAPI

Background Reading: 0.0 cps
 Calibrator Reading: 1.0 cps

Sensitivity:

0.2500

GAP/cps