

MICRO LOG

Company CHARTER ENERGY, INC.  
Well MORRISON TRUST #1  
Field TAYLOR NORTHEAST  
County STAFFORD  
State KANSAS

Company CHARTER ENERGY, INC.  
Well MORRISON TRUST #1  
Field TAYLOR NORTHEAST  
County STAFFORD State KANSAS

Location: API # : 15-185-24052-0000  
2105' FNL & 865' FWL  
SEC 1 TWP 21S RGE 14W  
Permanent Datum GROUND LEVEL Elevation 1912  
Log Measured From KELLY BUSHING 10' A.G.L.  
Drilling Measured From KELLY BUSHING  
Other Services CD/LCN/LMEL  
Elevation K.B. 1922  
D.F. 1920  
G.L. 1912

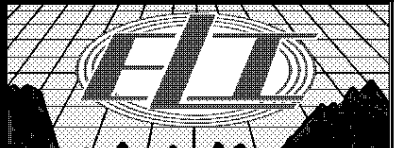
Date	4/20/19
Run Number	TWO
Depth Driller	3660
Depth Logger	3656
Bottom Logged Interval	3655
Top Log Interval	3000
Casing Driller	8 5/8" @ 296
Casing Logger	296
Bit Size	7 7/8"
Type Fluid in Hole	CHEMICAL MUD
Density / Viscosity	9.15/47
pH / Fluid Loss	9.5/12.4
Source of Sample	FLOWLINE
Rm @ Meas. Temp	.3 @ 60F
Rmt @ Meas. Temp	.23 @ 60F
Rmc @ Meas. Temp	.36 @ 60F
Source of Rmt / Rmc	MEASURED
Rm @ BHT	.16 @ 113F
Time Circulation Stopped	2 HOURS
Time Logger on Bottom	///
Maximum Recorded Temperature	113F
Equipment Number	1523
Location	HAYS, KANSAS
Recorded By	GUS PFANENSTIEL
Witnessed By	WYATT URBAN

<<< Fold Here >>>

All interpretations are opinions based on inferences from electrical or other measurements and we cannot and do not guarantee the accuracy or correctness of any interpretation, and we shall not, except in the case of gross or willful negligence on our part, be liable or responsible for any loss, costs, damages, or expenses incurred or sustained by anyone resulting from any interpretation made by any of our officers, agents or employees. These interpretations are also subject to our general terms and conditions set out in our current Price Schedule.

Comments

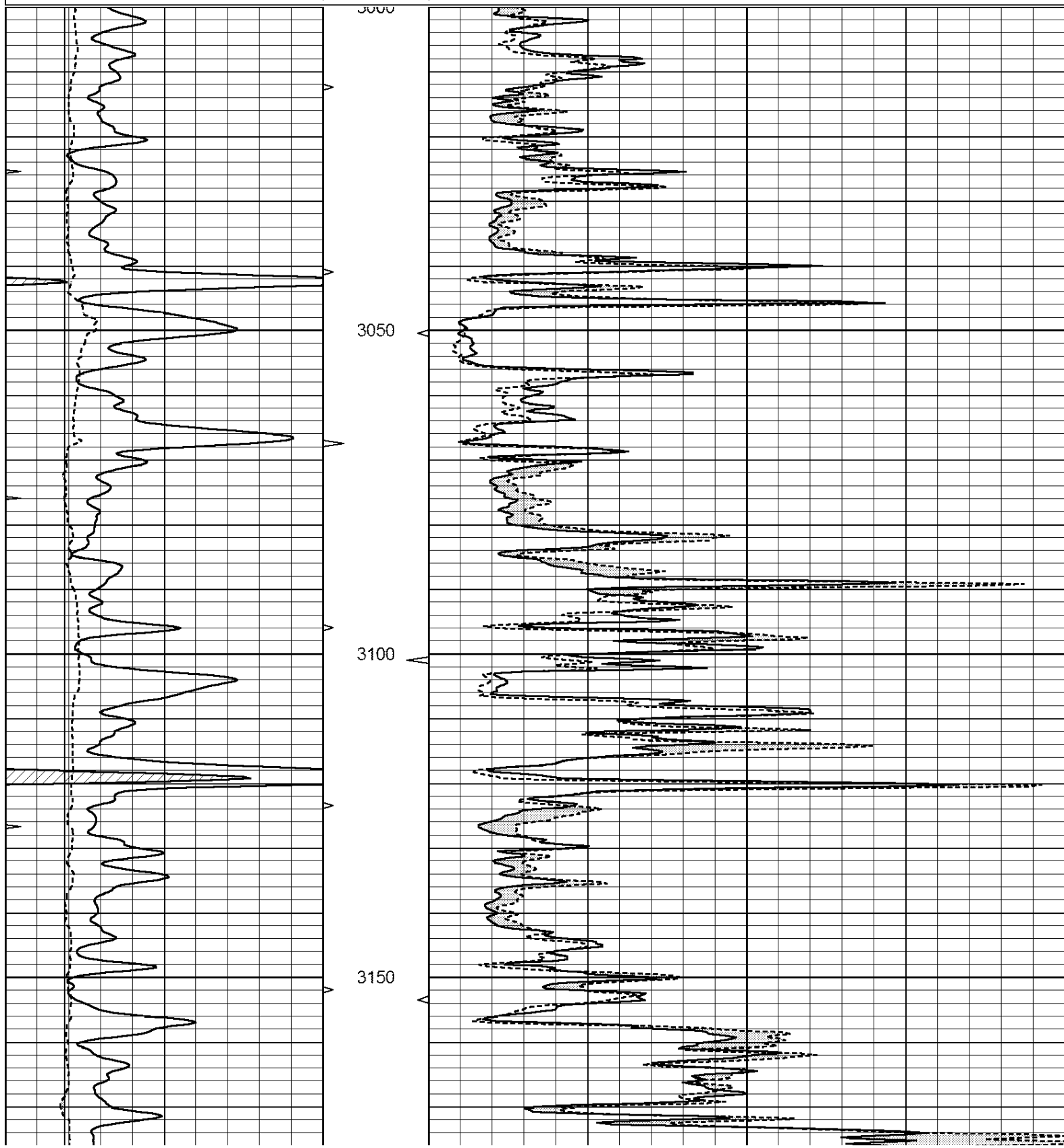
THANK YOU FOR USING ELI WIRELINE, HAYS, KS. (785) 628-6395  
DIRECTIONS  
SOUTH OF GREATBEND TO COUNTY LINE 4 WEST,  
1/2 SOUTH, EAST INTO.

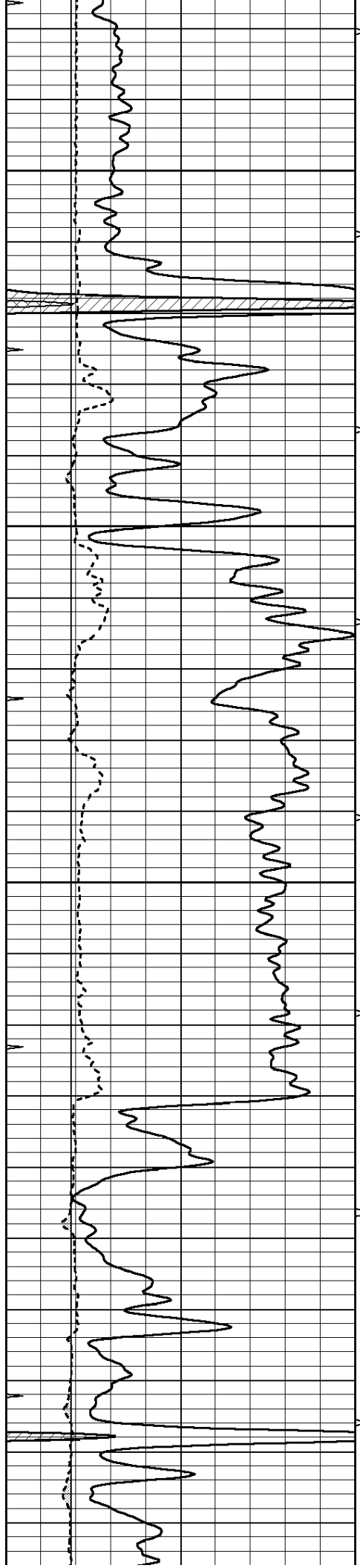


MAIN PASS

Database File: 3498ddn.db  
 Dataset Pathname: pass5.1  
 Presentation Format: \_micro  
 Dataset Creation: Sat Apr 20 15:00:59 2019  
 Charted by: Depth in Feet scaled 1:240

0	GAMMA RAY (GAPI)	150	ABHV	0	MEL1.5 (Ohm-m)	40
6	CALIPER (in)	16	10 (ft3)	0	MEL2.0 (Ohm-m)	40
0	MINMK	20	TBHV			
			0 (ft3)	10		



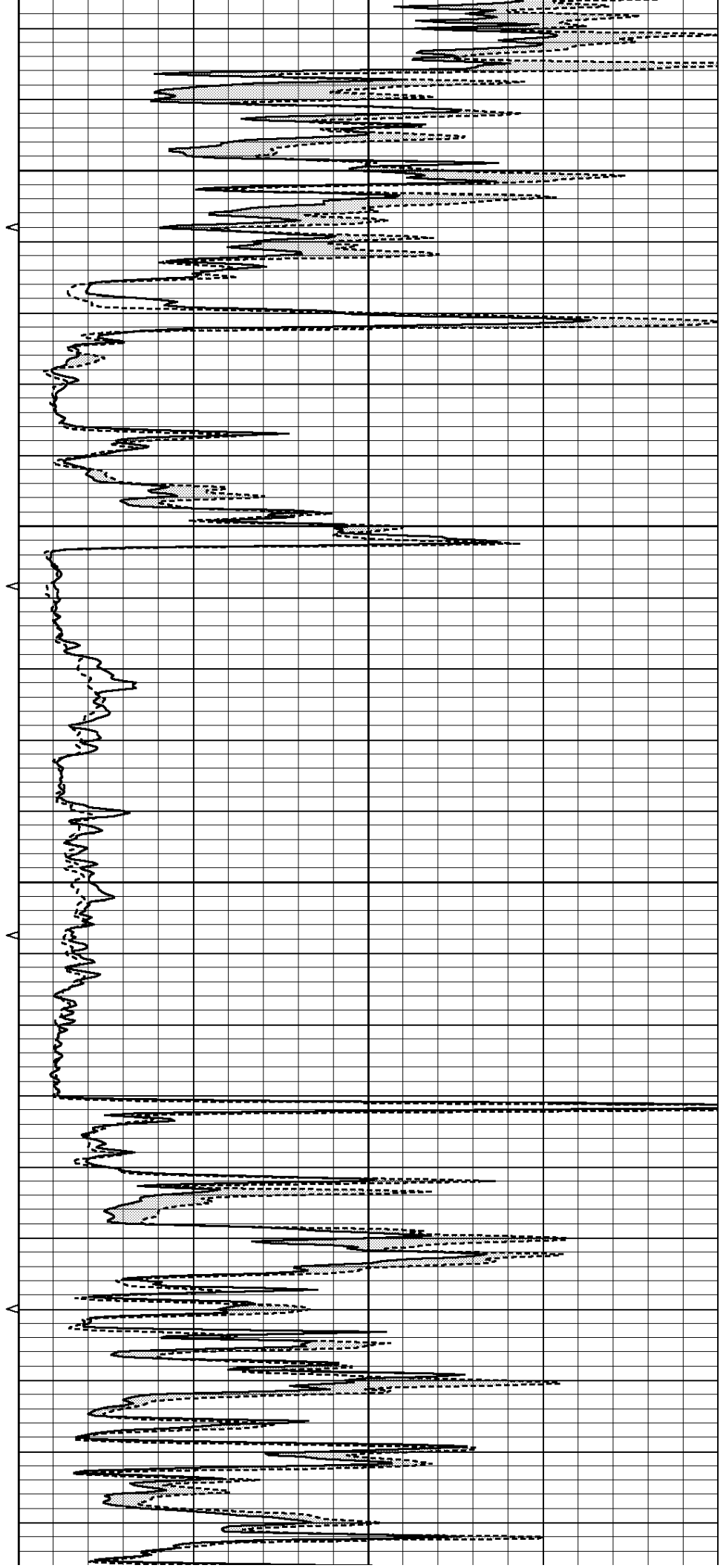


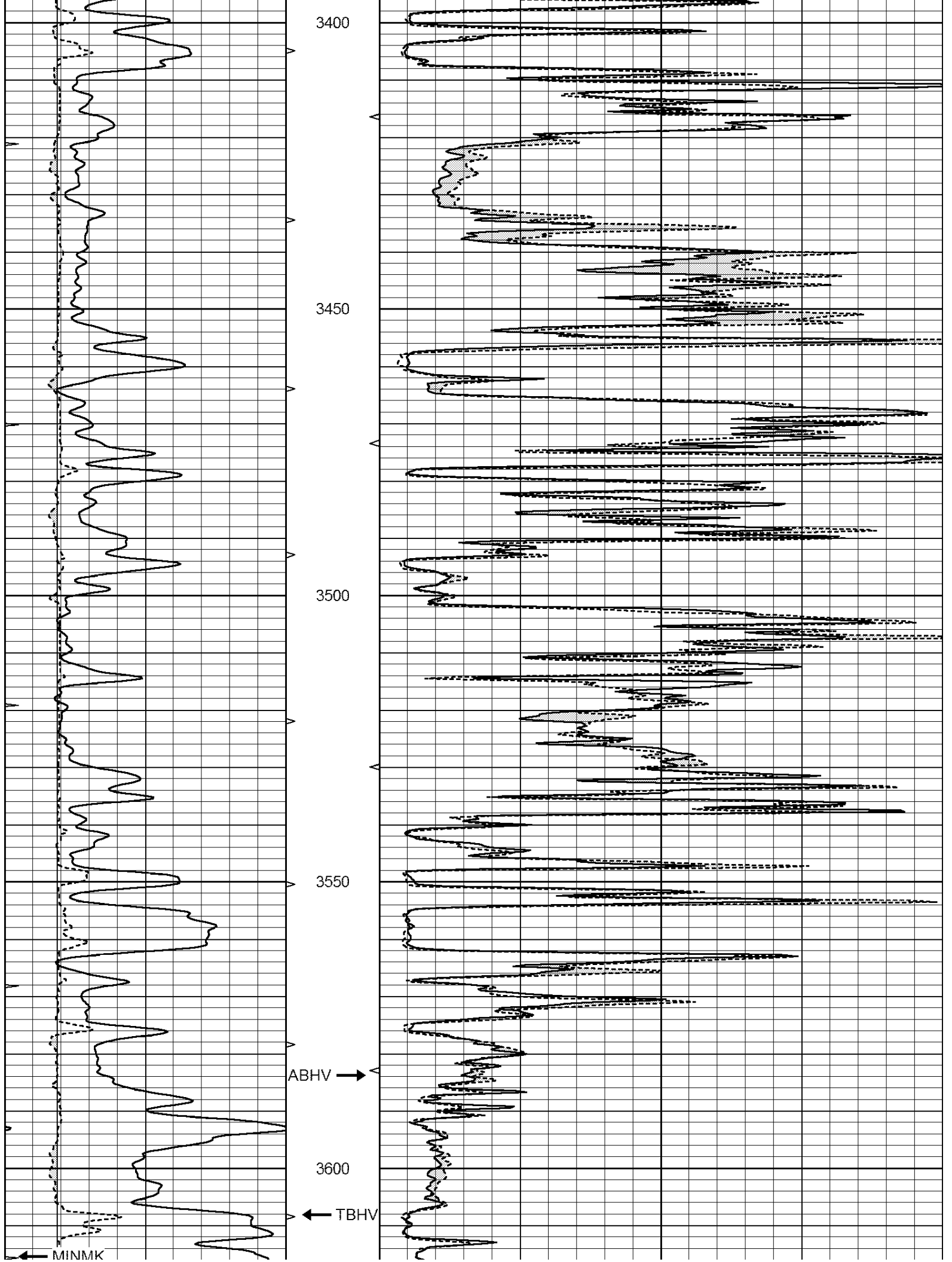
3200

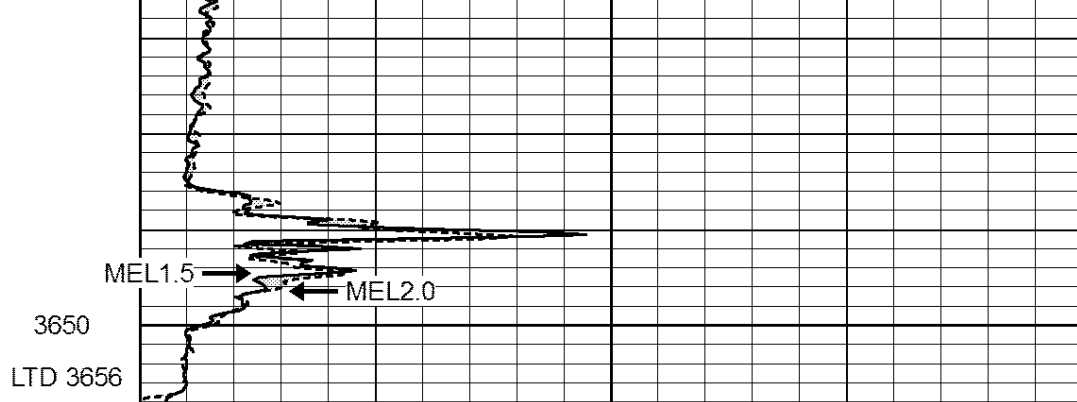
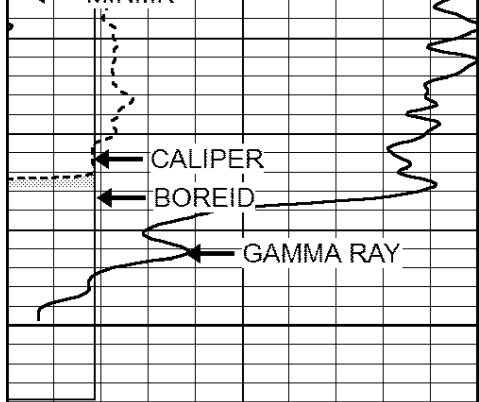
3250

3300

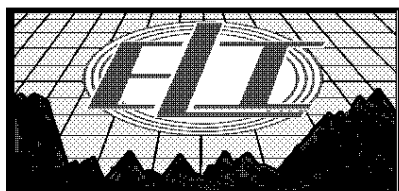
3350







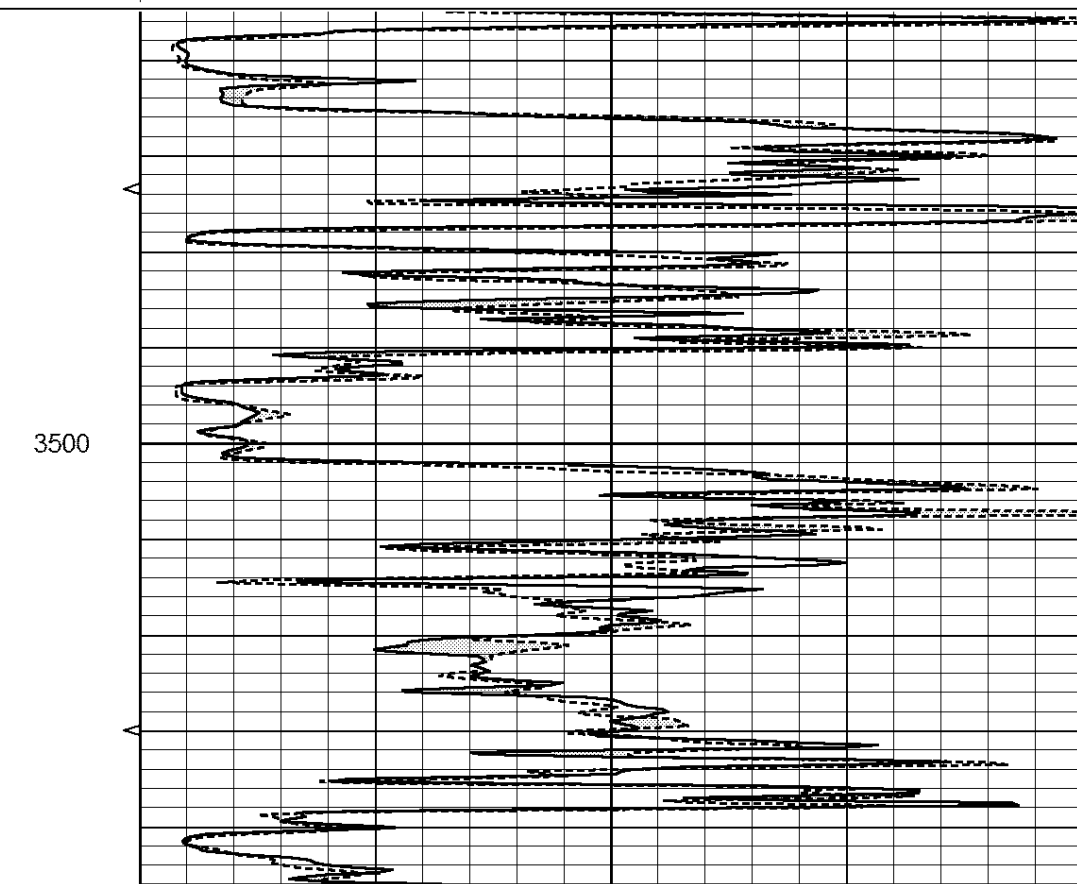
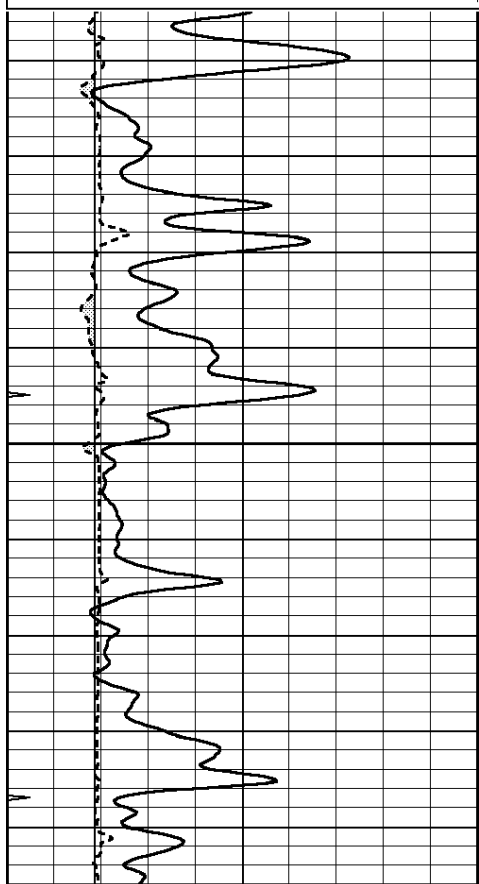
0	GAMMA RAY (GAPI)	150	ABHV	0	MEL1.5 (Ohm-m)	40
6	CALIPER (in)	16	10 (ft3)	0	MEL2.0 (Ohm-m)	40
0	MINMK	20	TBHV			
			0 (ft3)	10		

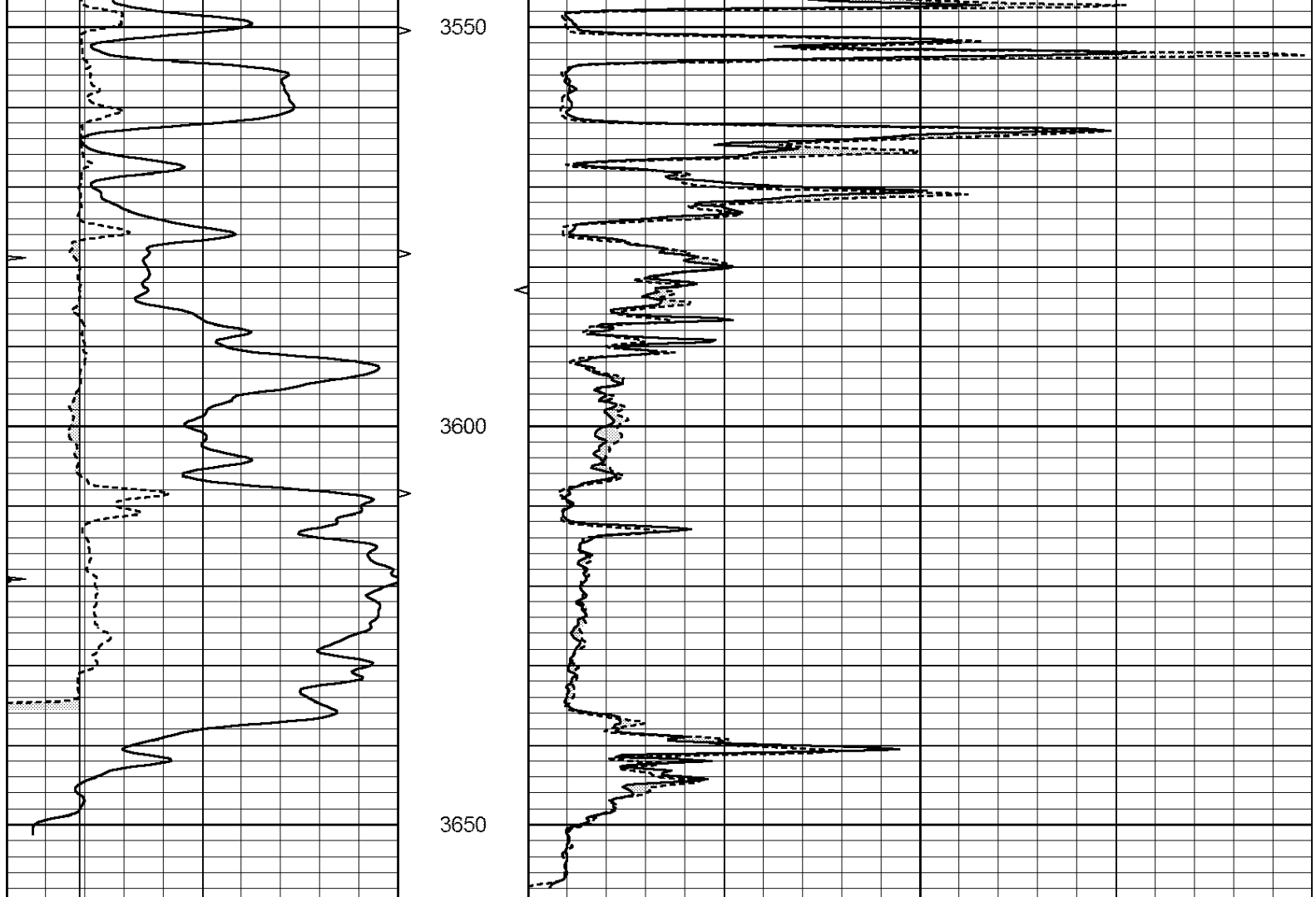


# REPEAT SECTION

Database File: 3498ddn.db  
 Dataset Pathname: pass4.1  
 Presentation Format: \_micro  
 Dataset Creation: Sat Apr 20 14:57:07 2019  
 Charted by: Depth in Feet scaled 1:240

0	GAMMA RAY (GAPI)	150	ABHV	0	MEL1.5 (Ohm-m)	40
6	CALIPER (in)	16	10 (ft3)	0	MEL2.0 (Ohm-m)	40
0	MINMK	20	TBHV			
			0 (ft3)	10		





0	GAMMA RAY (GAPI)	150	ABHV	0	MEL1.5 (Ohm-m)	40
6	CALIPER (in)	16	10 (ft3)	0	MEL2.0 (Ohm-m)	40
0	MINMK	20	TBHV			
			0 (ft3)	10		

Calibration Report			
Database File:	3498ddn.db		
Dataset Pathname:	pass4.1		
Dataset Creation:	Sat Apr 20 14:57:07 2019		
MICRO Calibration Report			
Serial Number:	MICRO3		
Tool Model:	PROBE		
Performed:	Sat Apr 06 08:28:00 2019		
Caliper Calibration:	Gain=5.761	Offset=-21.702	
References	Low Cal	High Cal	
Readings	7.000	14.000	
	5.339	6.500	
1.5" Calibration:	Gain=79.606	Offset=1.120	
References	Low Cal	High Cal	
Readings	0.000	20.000	
	0.001	0.230	
2" Calibration:	Gain=118.028	Offset=-0.176	

	Low Cal	High Cal
References	0.000	20.000
Readings	0.018	0.188

Gamma Ray Calibration Report

Serial Number:	GR5	
Tool Model:	OPEN	
Performed:	Wed Feb 27 04:44:36 2019	
Calibrator Value:	1.0	GAPI
Background Reading:	0.0	cps
Calibrator Reading:	1.0	cps
Sensitivity:	0.5600	GAPI/cps