



MICRO LOG

Company BRUNGARDT OIL & LEASING CO.
Well REICH B #2
Field DREHER
County RUSSELL
State KANSAS

Company BRUNGARDT OIL & LEASING CO.
Well REICH B #2
Field DREHER
County RUSSELL State KANSAS

Location: API # : 15-167-24082-0000
1775' FNL & 2295' FWL
SEC 22 TWP 11S RGE 15W
Permanent Datum GROUND LEVEL Elevation 1808
Log Measured From KELLY BUSHING 8' A.G.L.
Drilling Measured From KELLY BUSHING
Other Services CDL/CNL/DIL
Elevation K.B. 1816
D.F. 1814
G.L. 1808

Date	11/21/18
Run Number	TWO
Depth Driller	3335
Depth Logger	3337
Bottom Logged Interval	3336
Top Log Interval	2600
Casing Driller	8 5/8" @ 224
Casing Logger	224
Bit Size	7 7/8"
Type Fluid in Hole	CHEMICAL MUD
Density / Viscosity	8.9/50
pH / Fluid Loss	10.5/8.8
Source of Sample	FLOWLINE
Rm @ Meas. Temp	.60@60
Rmt @ Meas. Temp	.45@60
Rmc @ Meas. Temp	.72@60
Source of Rmf / Rmc	MEASURED
Rm @ BHT	.36 @ 110F
Time Circulation Stopped	2 HOURS
Time Logger on Bottom	///
Maximum Recorded Temperature	110F
Equipment Number	1523
Location	HAYS, KANSAS
Recorded By	GUS PFANENSTIEL
Witnessed By	ROGER FISHER

<<< Fold Here >>>

All interpretations are opinions based on inferences from electrical or other measurements and we cannot and do not guarantee the accuracy or correctness of any interpretation, and we shall not, except in the case of gross or willful negligence on our part, be liable or responsible for any loss, costs, damages, or expenses incurred or sustained by anyone resulting from any interpretation made by any of our officers, agents or employees. These interpretations are also subject to our general terms and conditions set out in our current Price Schedule.

Comments

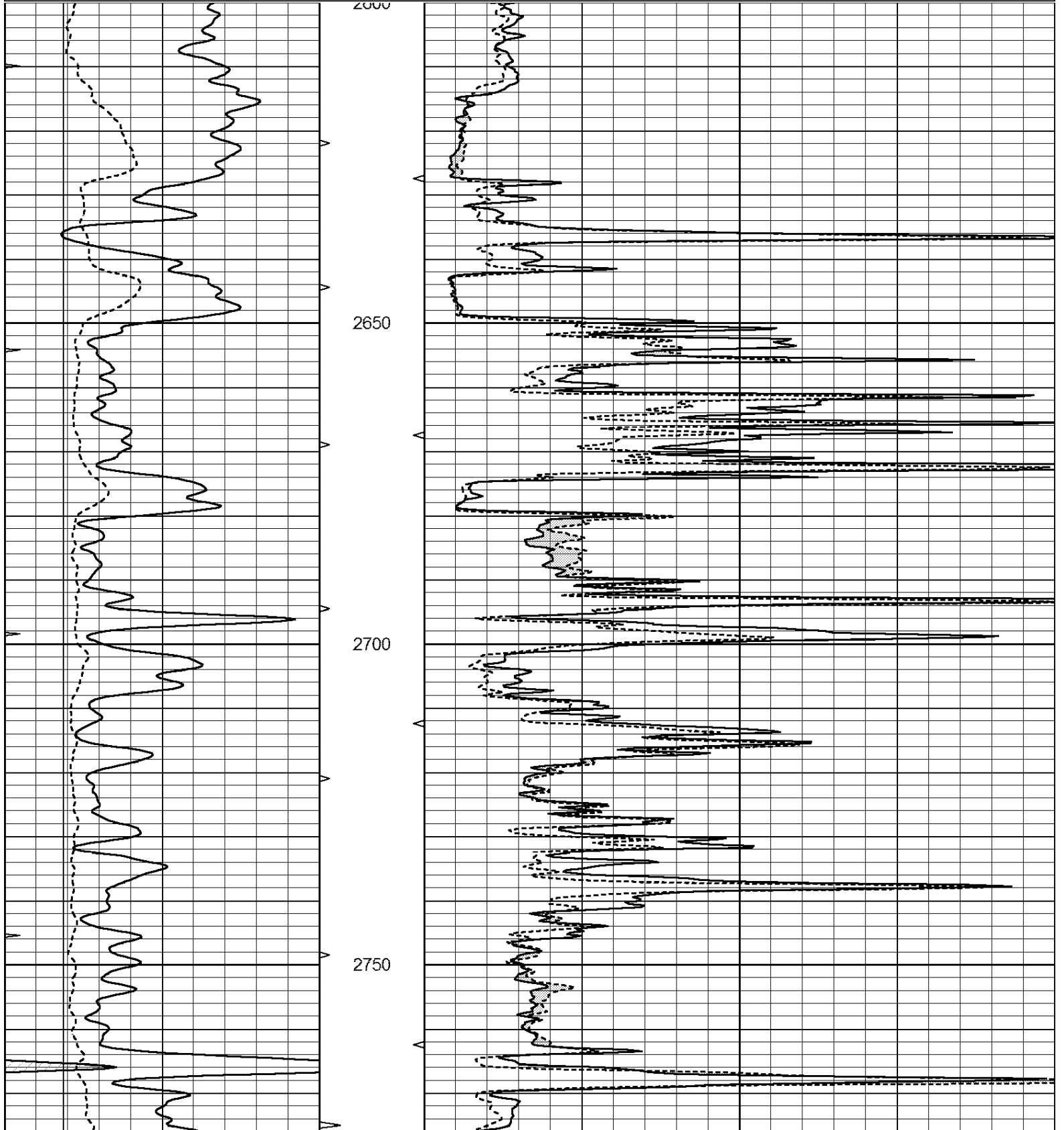
THANK YOU FOR USING ELI WIRELINE, HAYS, KS. (785) 628-6395
DIRECTIONS
GORHAM BLACK TOP NORTH TO SALINE LN.(RD. BEFORE CURVE)
EAST 1, BACK NORTH TO PARADISE RD., EAST 3/4,
SOUTH INTO.

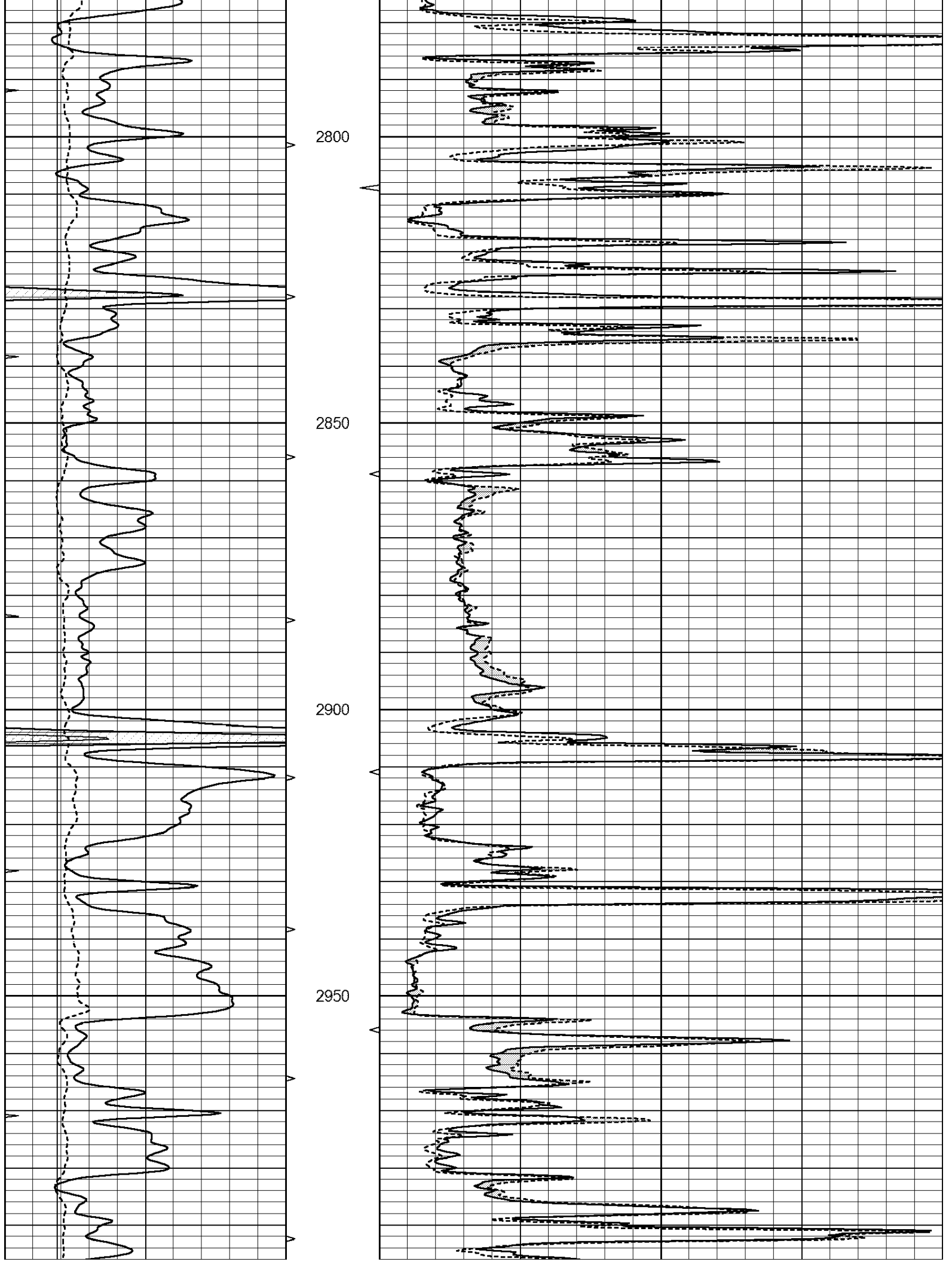


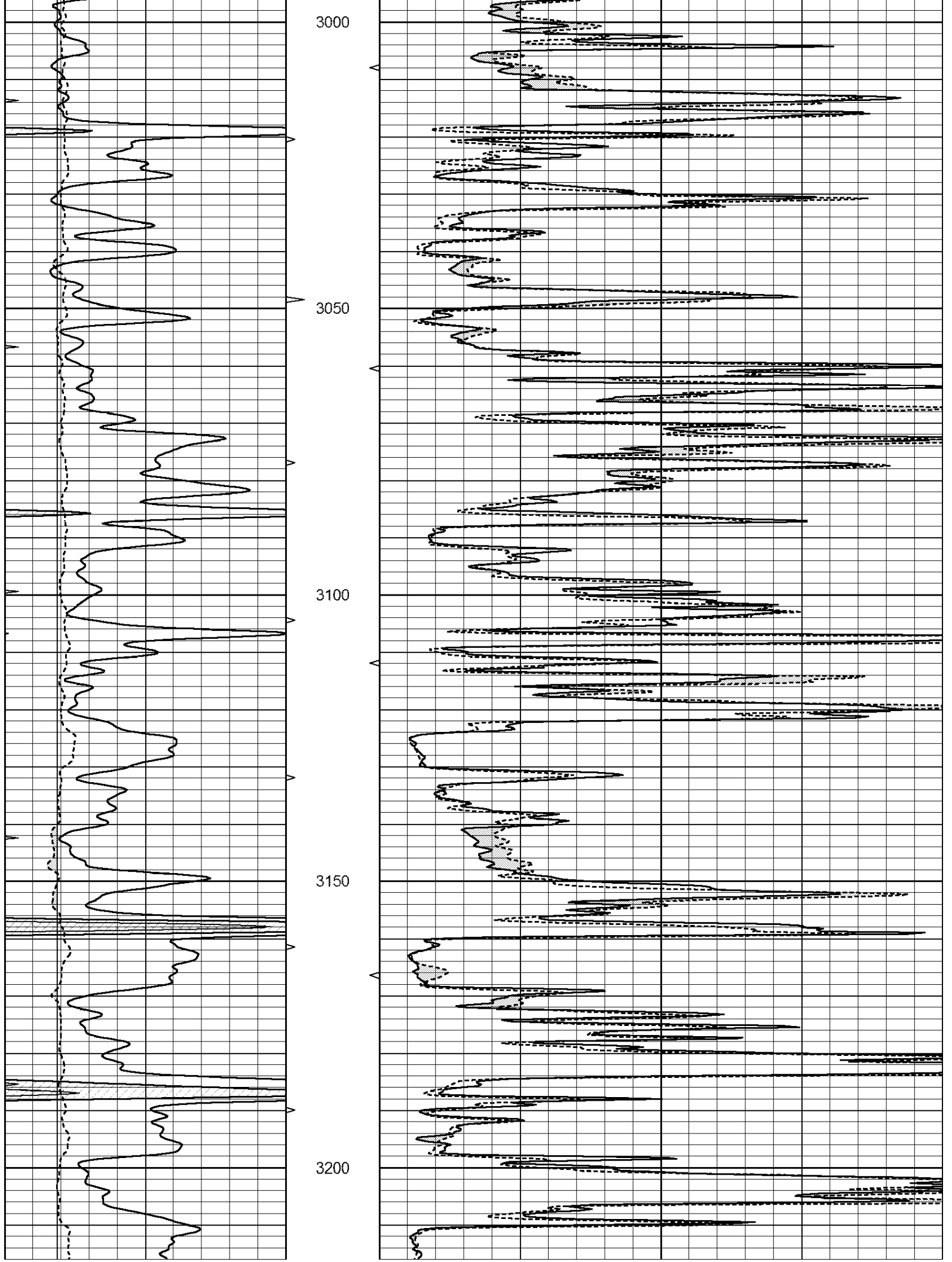
MAIN PASS

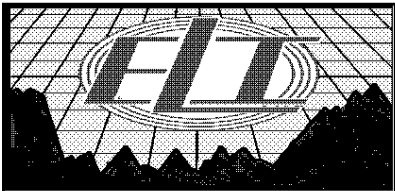
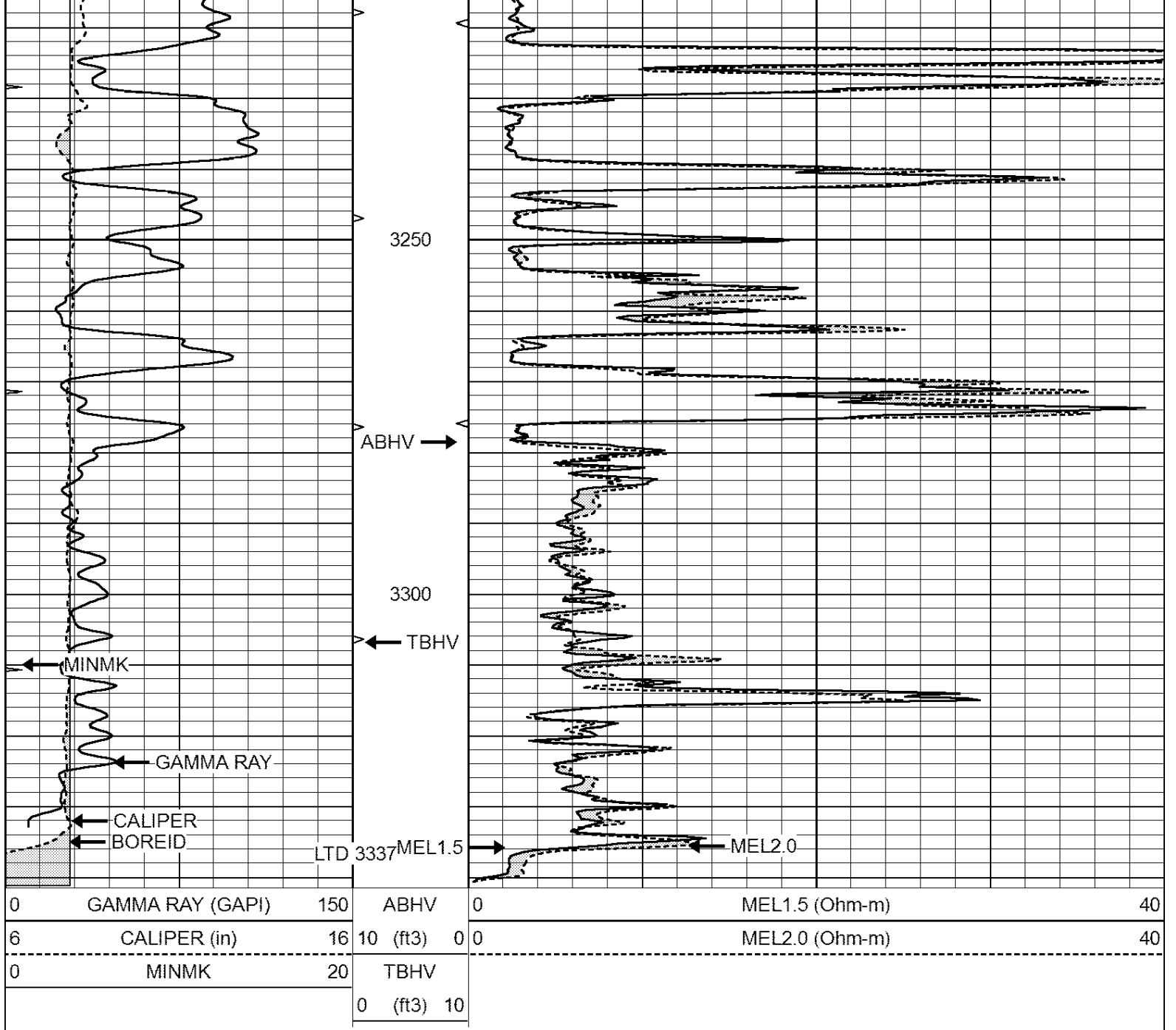
Database File: 3161ddn.db
 Dataset Pathname: pass5.1
 Presentation Format: _micro
 Dataset Creation: Wed Nov 21 11:05:22 2018
 Charted by: Depth in Feet scaled 1:240

0	GAMMA RAY (GAPI)	150	ABHV	0	MEL1.5 (Ohm-m)	40
6	CALIPER (in)	16	10 (ft3)	0	MEL2.0 (Ohm-m)	40
0	MINMK	20	TBHV			
			0 (ft3)	10		





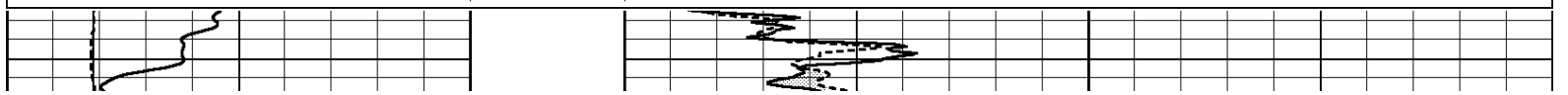


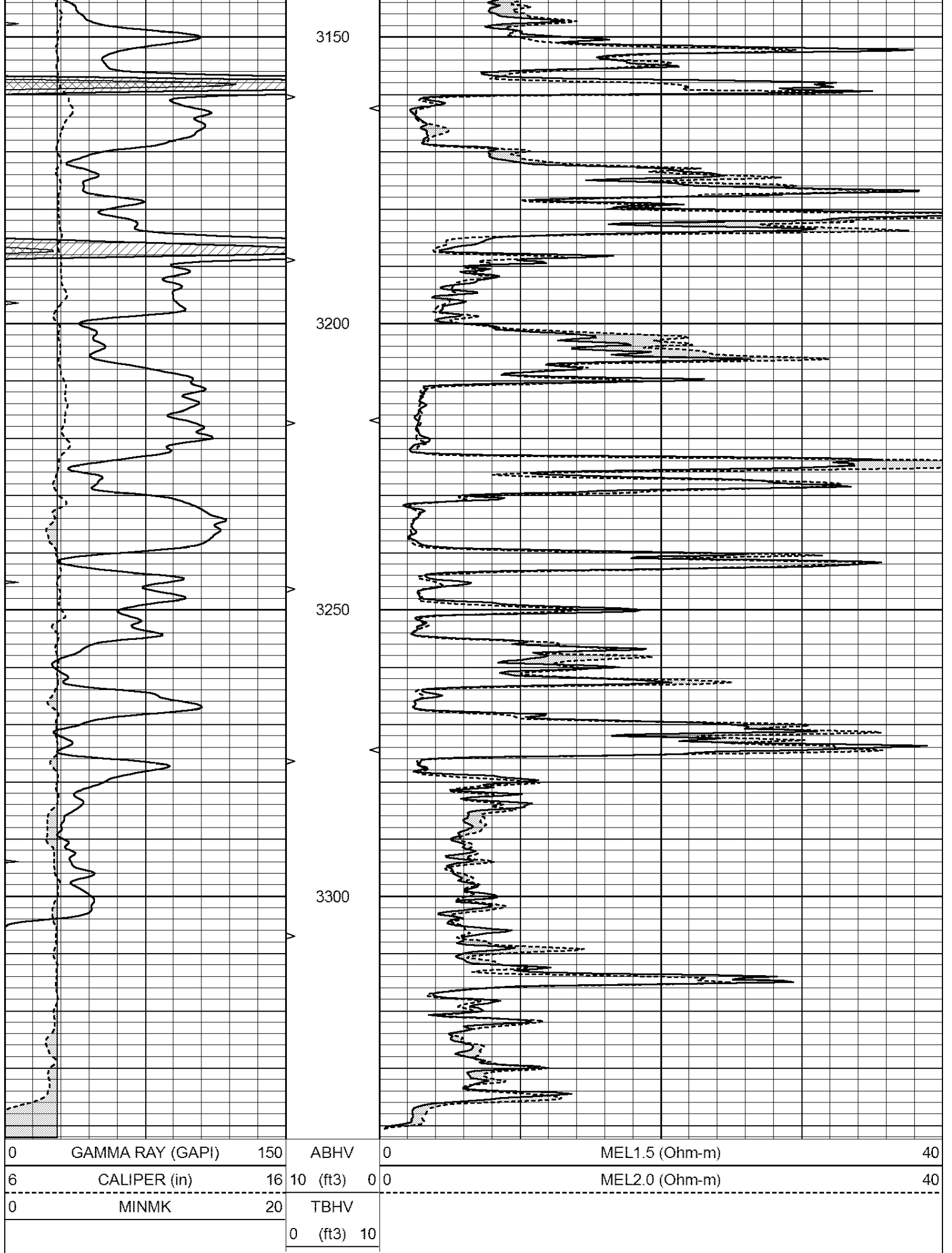


REPEAT SECTION

Database File: 3161ddn.db
 Dataset Pathname: pass4.1
 Presentation Format: _micro
 Dataset Creation: Wed Nov 21 11:00:09 2018
 Charted by: Depth in Feet scaled 1:240

0	GAMMA RAY (GAPI)	150	ABHV	0	MEL1.5 (Ohm-m)	40
6	CALIPER (in)	16	10 (ft3)	0	MEL2.0 (Ohm-m)	40
0	MINMK	20	TBHV			
			0 (ft3)	10		





Calibration Report

Database File: 3161ddn.db
 Dataset Pathname: pass4.1
 Dataset Creation: Wed Nov 21 11:00:09 2018

MICRO Calibration Report

Serial Number: MICRO3
 Tool Model: PROBE
 Performed: Fri Nov 09 06:01:34 2018

Caliper Calibration: Gain=5.821 Offset=-24.602

	Low Cal	High Cal
References	7.000	14.000
Readings	5.339	6.500

1.5" Calibration: Gain=120.000 Offset=0.400

	Low Cal	High Cal
References	0.000	20.000
Readings	0.004	0.228

2" Calibration: Gain=110.553 Offset=0.220

	Low Cal	High Cal
References	0.000	20.000
Readings	0.005	0.175

Gamma Ray Calibration Report

Serial Number: GR5
 Tool Model: OPEN
 Performed: Sun Sep 30 12:56:34 2018

Calibrator Value: 1.0 GAPI

Background Reading:	0.0	cps
Calibrator Reading:	1.0	cps

Sensitivity: 0.5500 GAPI/cps