



DUAL COMP POROSITY LOG

Company PERKINS OIL ENTERPRISES, INC.
 Well KYSER-HYDE #26
 Field BUSH-DENTON
 County ELK
 State KANSAS

Company PERKINS OIL ENTERPRISES, INC.
 Well KYSER-HYDE #26
 Field BUSH-DENTON
 County ELK State KANSAS

Location: API #: 15-049-22618-00-00
 990' FSL & 1650' FEL
 SEC 9 TWP 30S RGE 9E
 Permanent Datum GROUND LEVEL Elevation 1447'
 Log Measured From KELLY BUSHING
 Drilling Measured From KELLY BUSHING
 Other Services DIL MEL

Date	12/14/2018						
Run Number	ONE						
Type Log	CNL/CDL						
Depth Driller	2875'						
Depth Logger	2875'						
Bottom Logged Interval	2846'						
Top Logged Interval	800'						
Type Fluid In Hole	CHEMICAL						
Salinity, PPM CL	900						
Density	9.3						
Level	FULL						
Max. Rec. Temp. F	105 DEG/F						
Operating Rig Time	2 HOURS						
Equipment -- Location	108 HAYS						
Recorded By	J. HENRICKSON						
Witnessed By	MIKE PRESSNALL						
Borehole Record							
Run No.	Bit	From	To	Size	Wgt.	From	To
ONE	12.25"	0	462'	8.625"	23#	0	462'
TWO	7.875"	462'	TD				
Casing Record							

<<< Fold Here >>>

All interpretations are opinions based on inferences from electrical or other measurements and Pioneer Wireline Services, LLC cannot and does not guarantee the accuracy or correctness of any interpretation, and Pioneer Wireline Services, LLC will not be liable or responsible for any loss, costs, damages, or expenses incurred or sustained by anyone resulting from any interpretation made by any of our officers, agents or employees.

Comments

N/A DENOTES NOT AVAILABLE OR NON-APPLICABLE.

HOWARD KANSAS
 WEST ON LIMESTONE TO RD 9, 1 SOUTH, 2 WEST TO CATTLE GUARD,
 WEST TO WIND FARM, SOUTH TO WELL AFTER CATTLE GUARD

Log Measured From: KELLY BUSHING 9 Ft. Above Permanent Datum

THANK YOU FOR USING PIONEER ENERGY SERVICES
www.pioneerenergy.com 785-625-3858

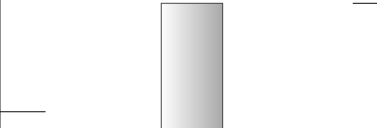
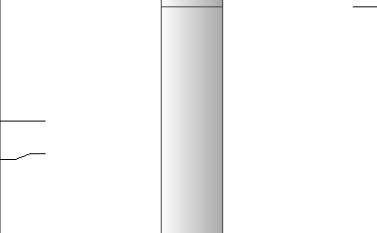
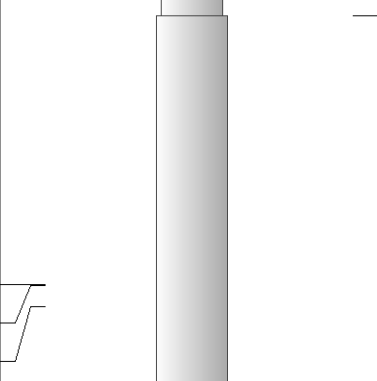
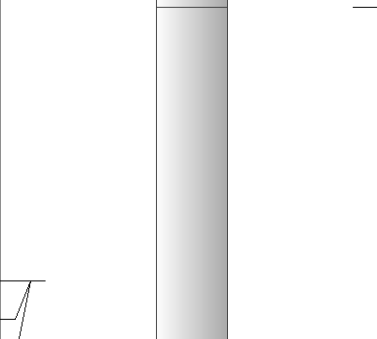
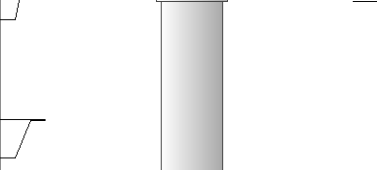
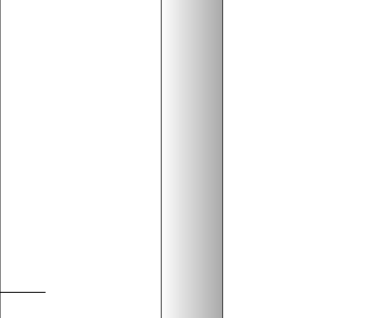
Your Pioneer Energy Services Crew		This Log Record Was Witnessed By	
Engineer: J. HENRICKSON	Operator:	Primary Witness: MIKE PRESSNALL	Secondary Witness:
Operator:	Operator:	Secondary Witness:	Secondary Witness:
Operator:		Secondary Witness:	

Log Variables

DatabaseC:\ProgramData\Warrior\Data\perkins_kyser_hyde_26.db
 Dataset field/well/stackml/pass3.1/_vars_

Top - Bottom

A	BOREID in	BOTTEMP degF	CASEOD in	CASETHCK in	FLUIDDEN g/cc	M	MATRXDEN g/cc
1	7.875	100	5.5	0	1	2	2.71
NPORSEL	PERFS	SNDERR mmho/m	SNDERRM mmho/m	SPSHIFT mV	SRFTEMP degF	SZCOR	TDEPTH ft
Limestone	0	0	0	60	0	Off	2875

Sensor	Offset (ft)	Schematic	Description	Length (ft)	O.D. (in)	Weight (lb)
GR	40.58		GR-M&W (89-M&W)	3.00	3.50	50.00
CNLSC CNSSC	37.48 36.73		CNT-M&W (tk10-MW)	5.50	3.50	100.00
LSD DCAL SSD	28.43 28.42 27.93		CDL-M&W (144-84)	8.50	4.00	250.00
MCAL MI MN	19.83 19.83 19.83		ML-PSI STKBL ML (PSI-01) Stackable Microlog Tools	7.58	4.00	65.00
RLL3 RLL3F	15.80 15.79					
CILD	8.00		DIL-M&W (PSI 988)	18.50	3.50	220.00

CILM 4.70

SP 0.20

Dataset: perkins_kyser_hyde_26.db: field/well/stackml/pass3.1
 Total length: 43.08 ft
 Total weight: 685.00 lb
 O.D.: 4.00 in

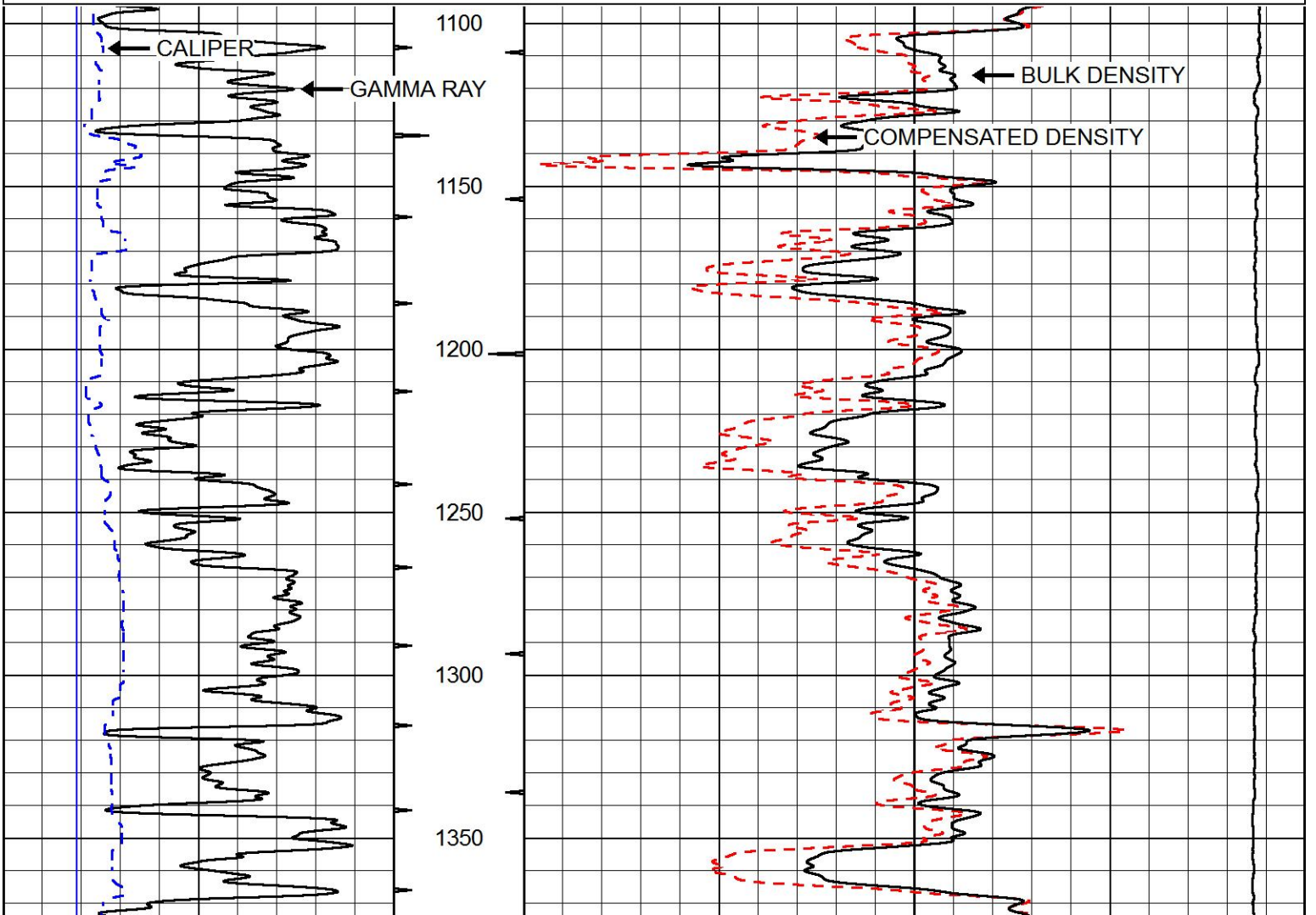


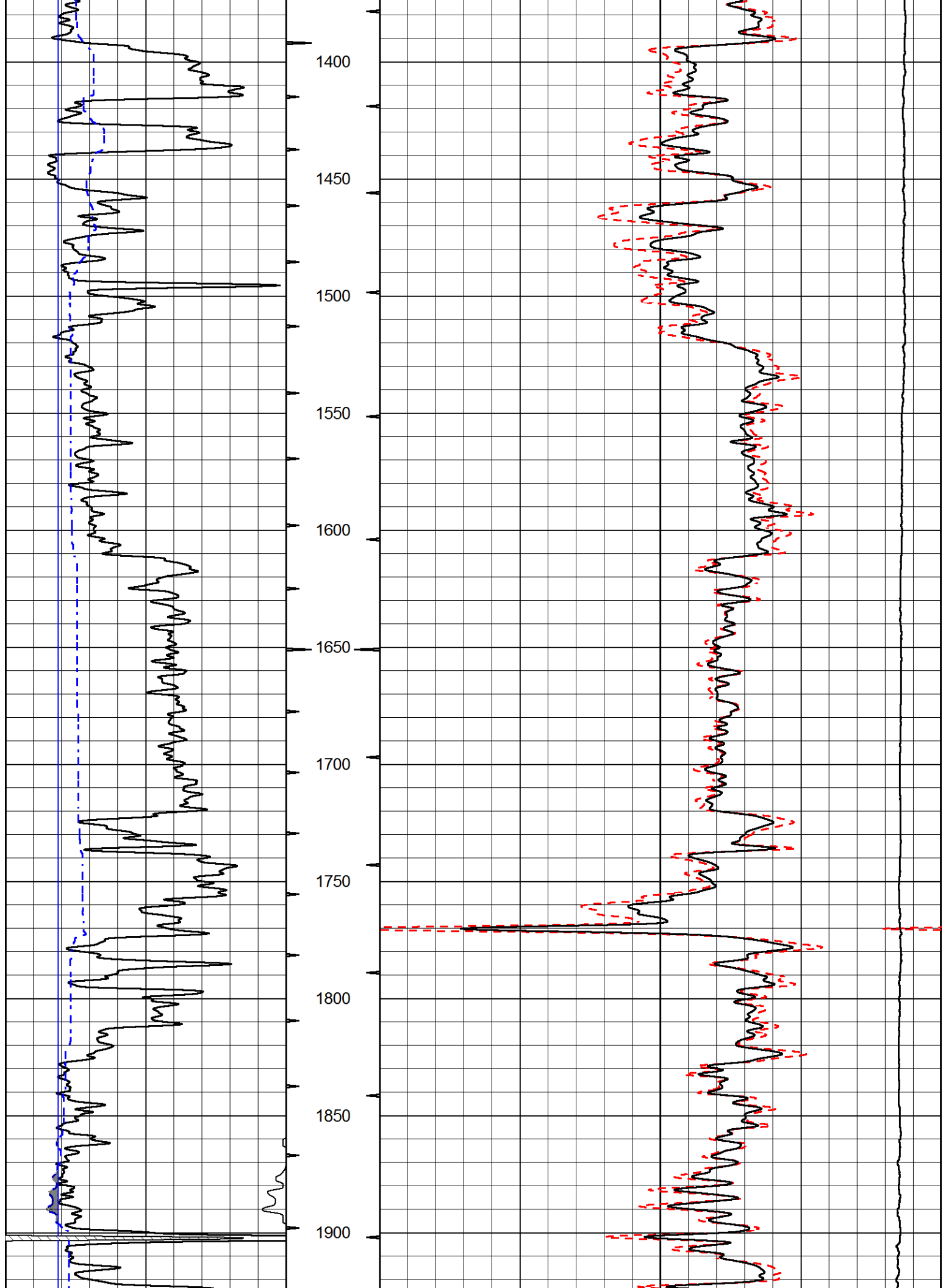
MAIN PASS

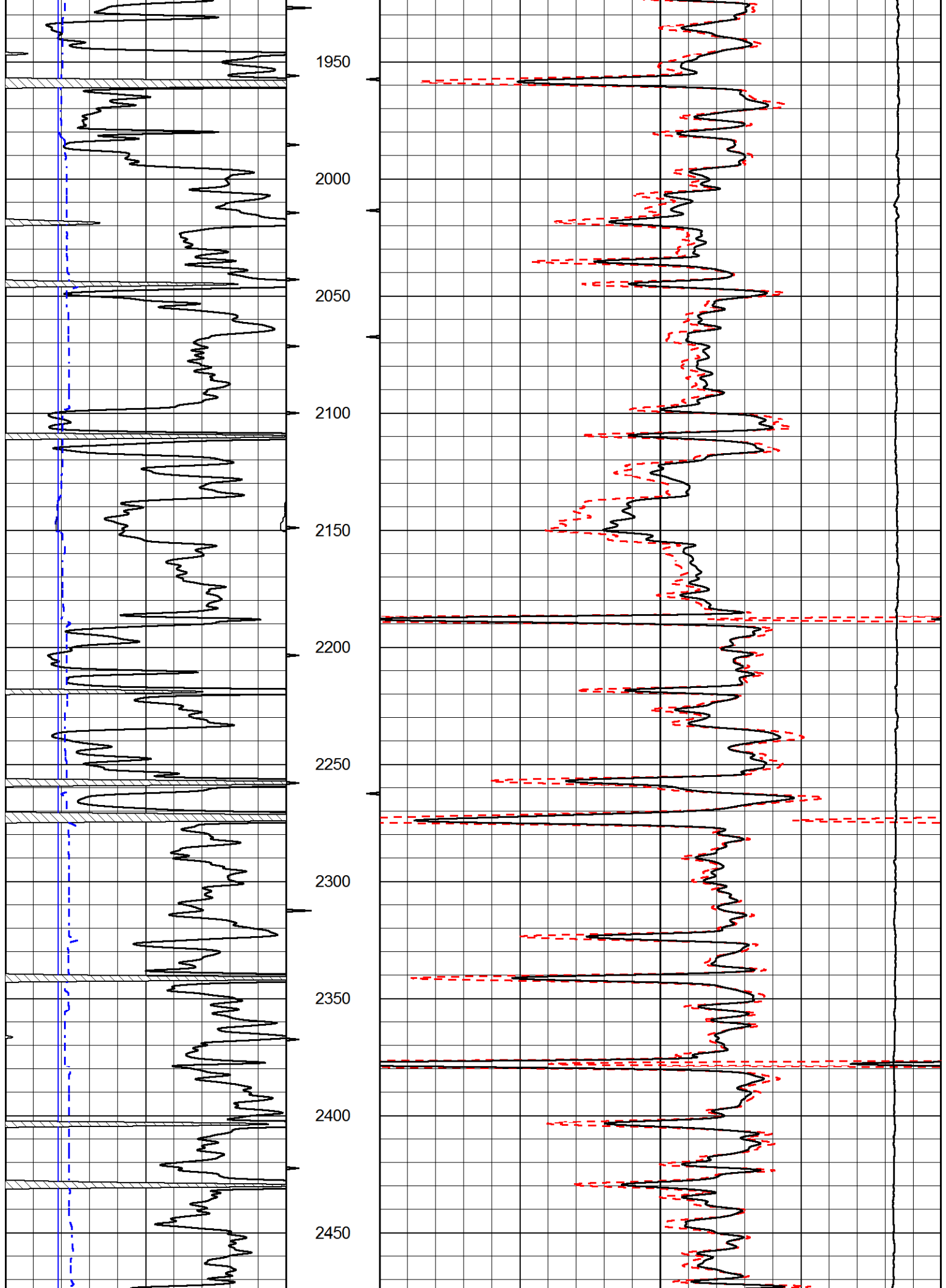
Database File perkins_kyser_hyde_26.db
 Dataset Pathname stackml/pass3.1
 Presentation Format cdl
 Dataset Creation Fri Dec 14 23:00:49 2018
 Charted by Depth in Feet scaled 1:600

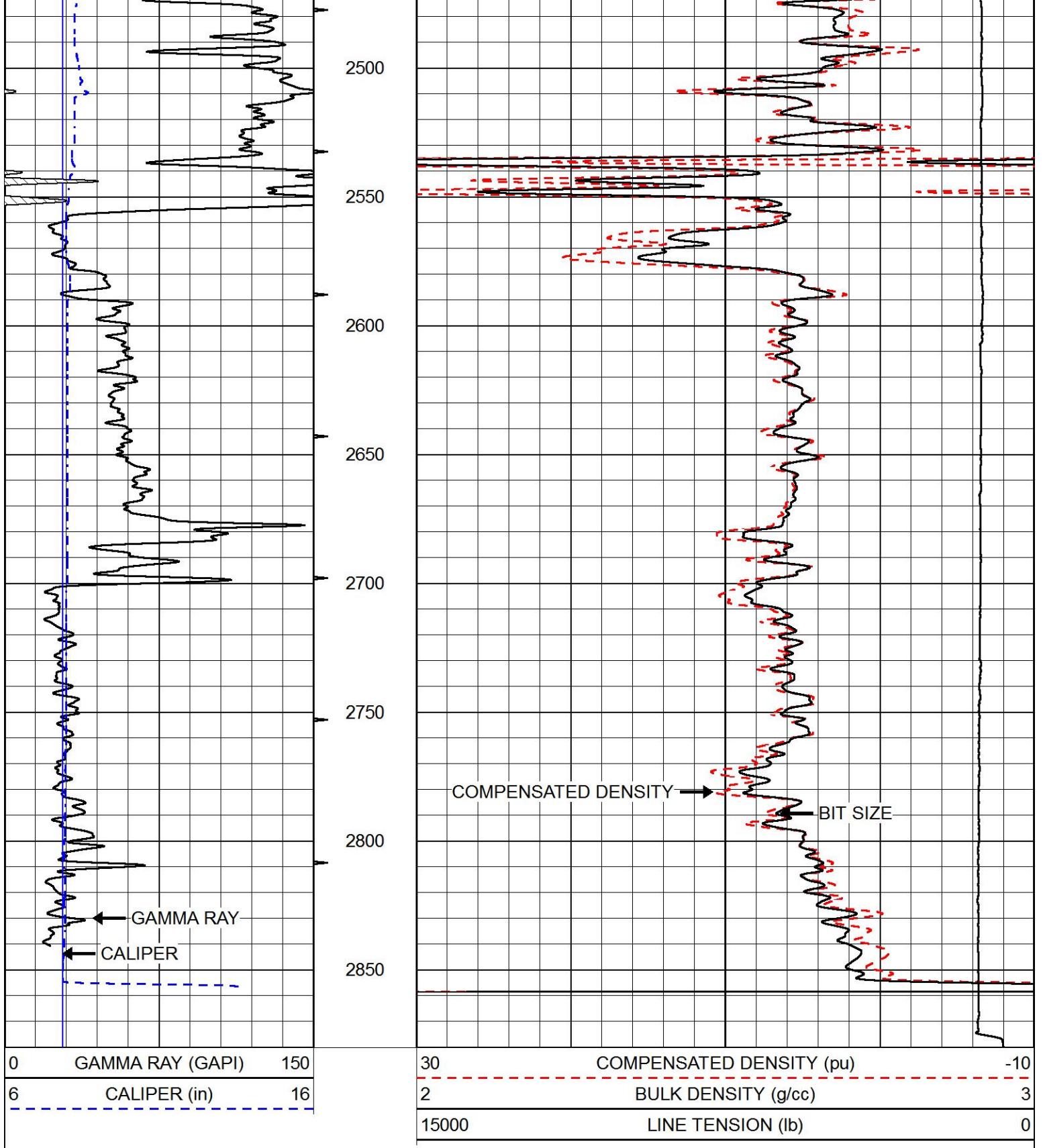
0	GAMMA RAY (GAPI)	150
6	CALIPER (in)	16

30	COMPENSATED DENSITY (pu)	-10
2	BULK DENSITY (g/cc)	3
15000	LINE TENSION (lb)	0









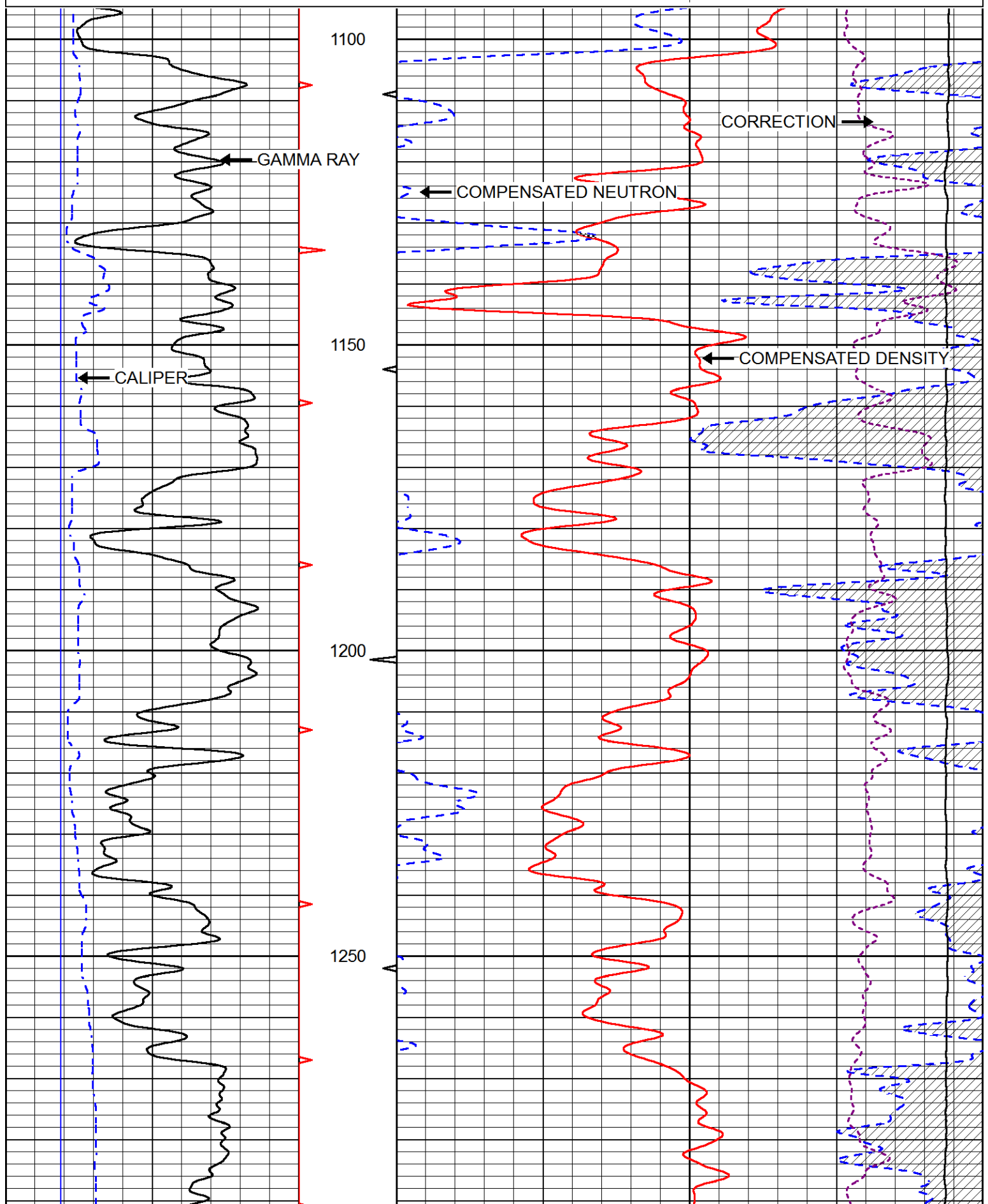
MAIN PASS

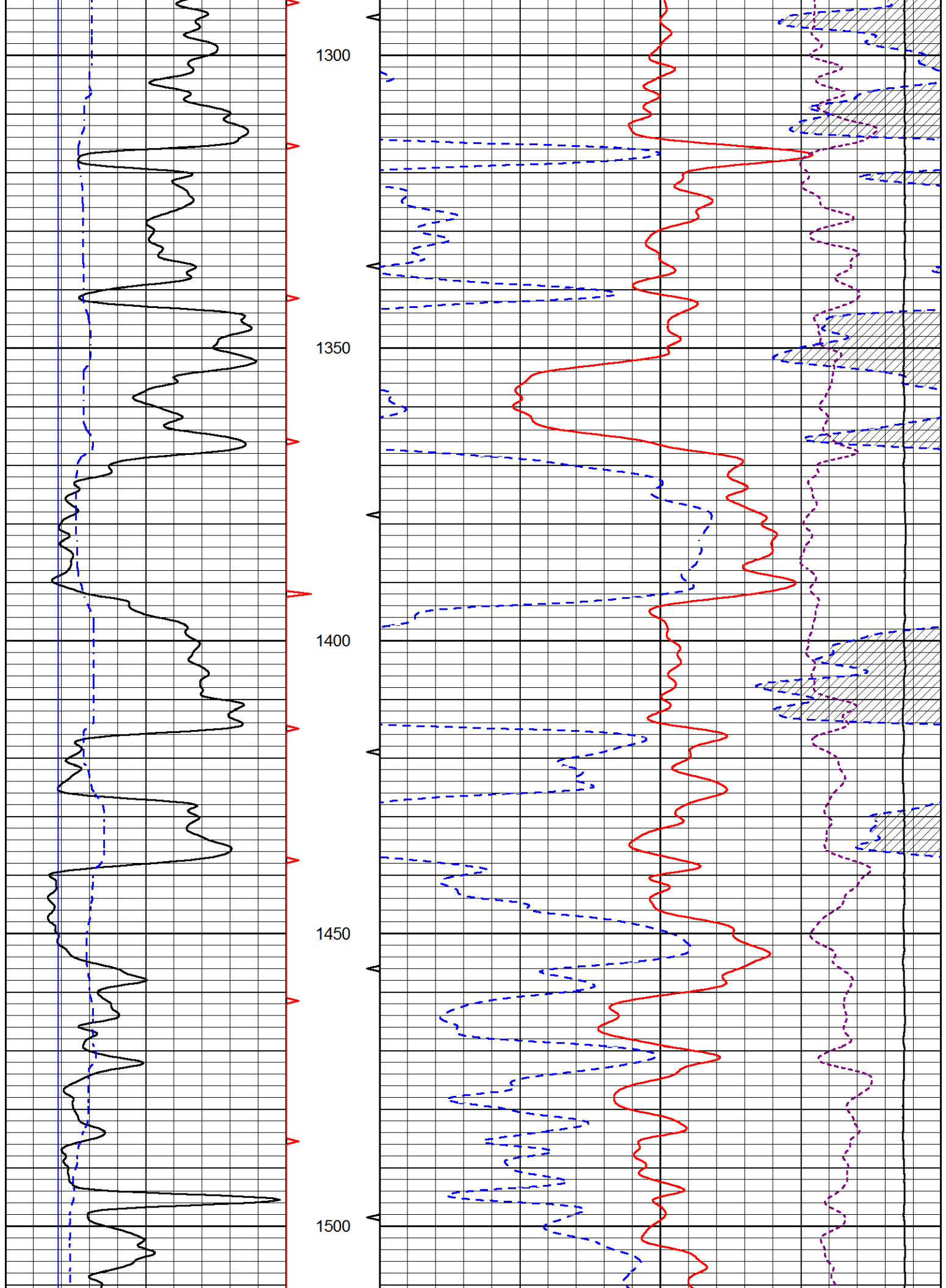
Database File perkins_kyser_hyde_26.db
 Dataset Pathname stackml/pass3.1
 Presentation Format cndlspec
 Dataset Creation Fri Dec 14 23:00:49 2018
 Charted by Depth in Feet scaled 1:240

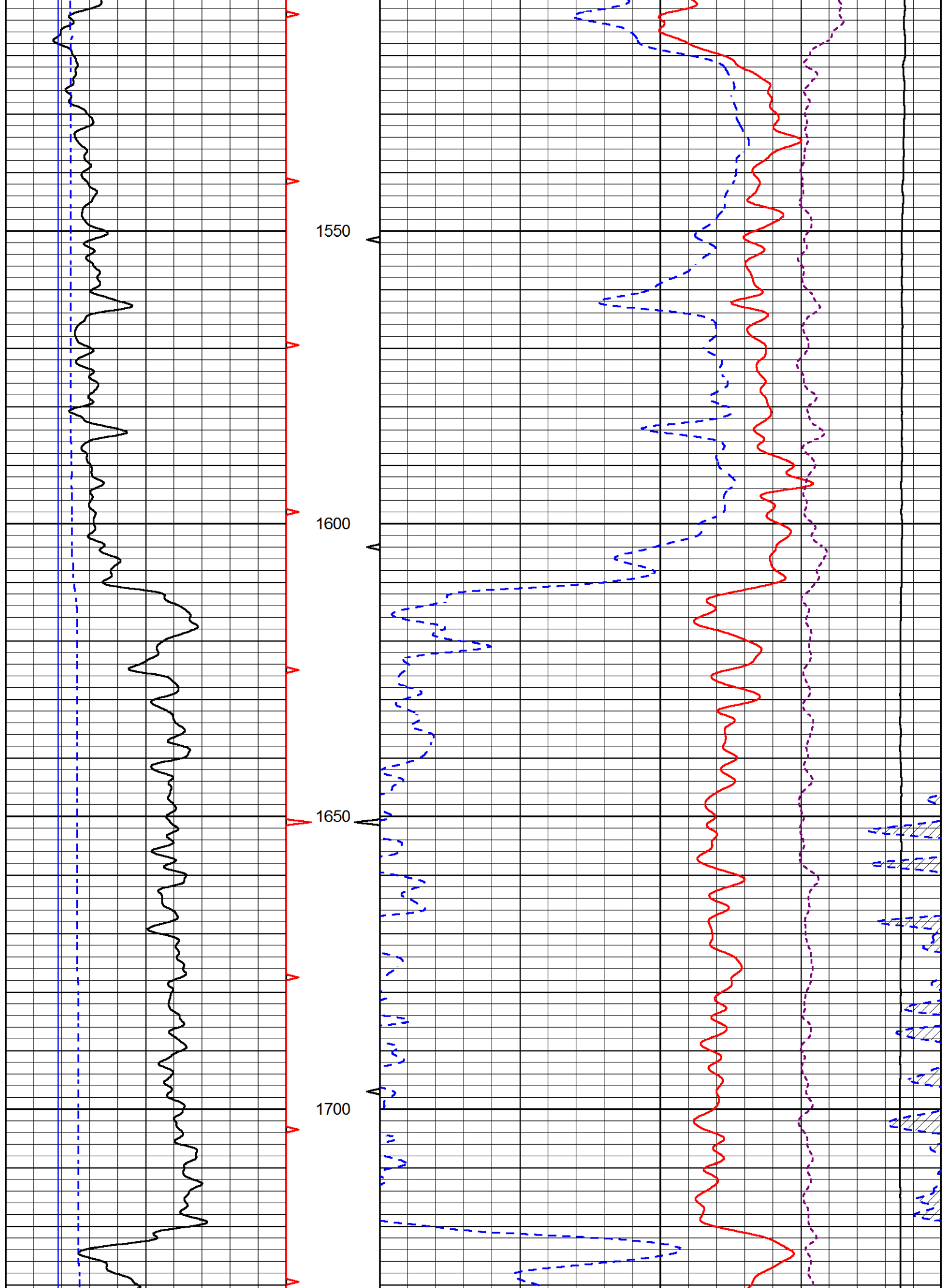
0	GAMMA RAY (GAPI)	150
6	dcal (in)	16
6	BIT SIZE (in)	16

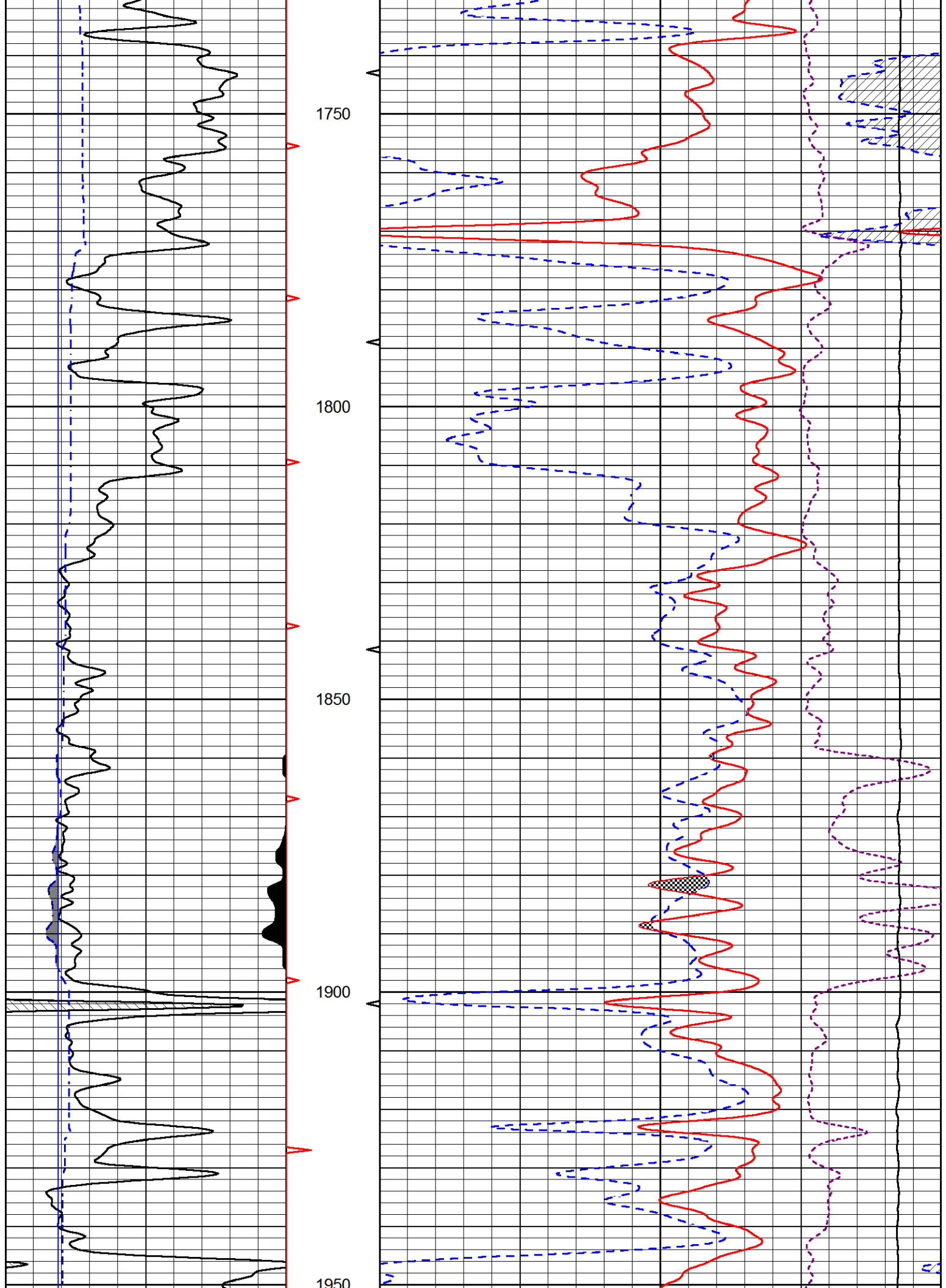
30	CNLS (pu)	-10
30	DPOR (pu)	-10
15000	LINE TENSION (lb)	0

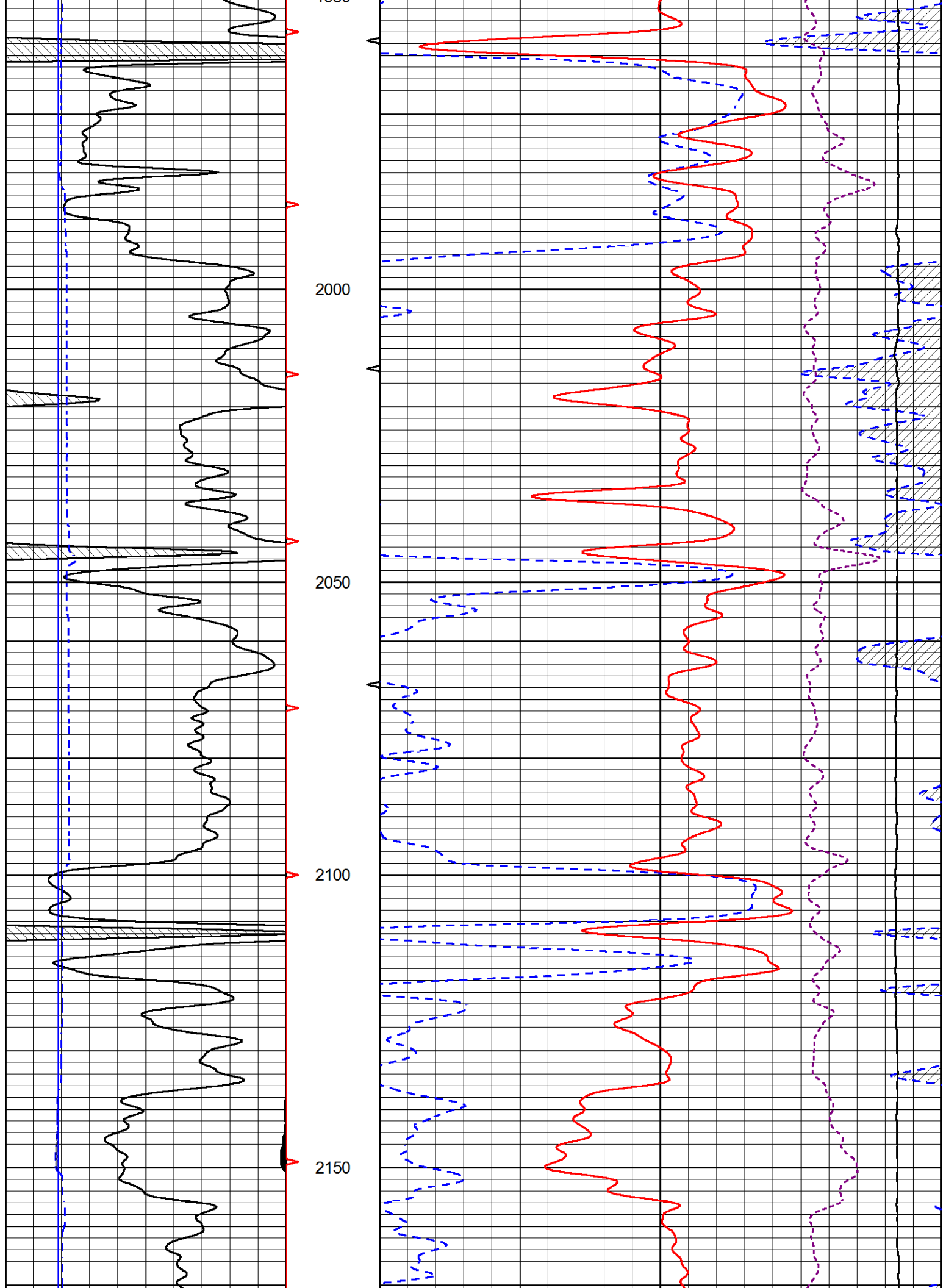
-0.25 RHOC (g/cc) 0.25

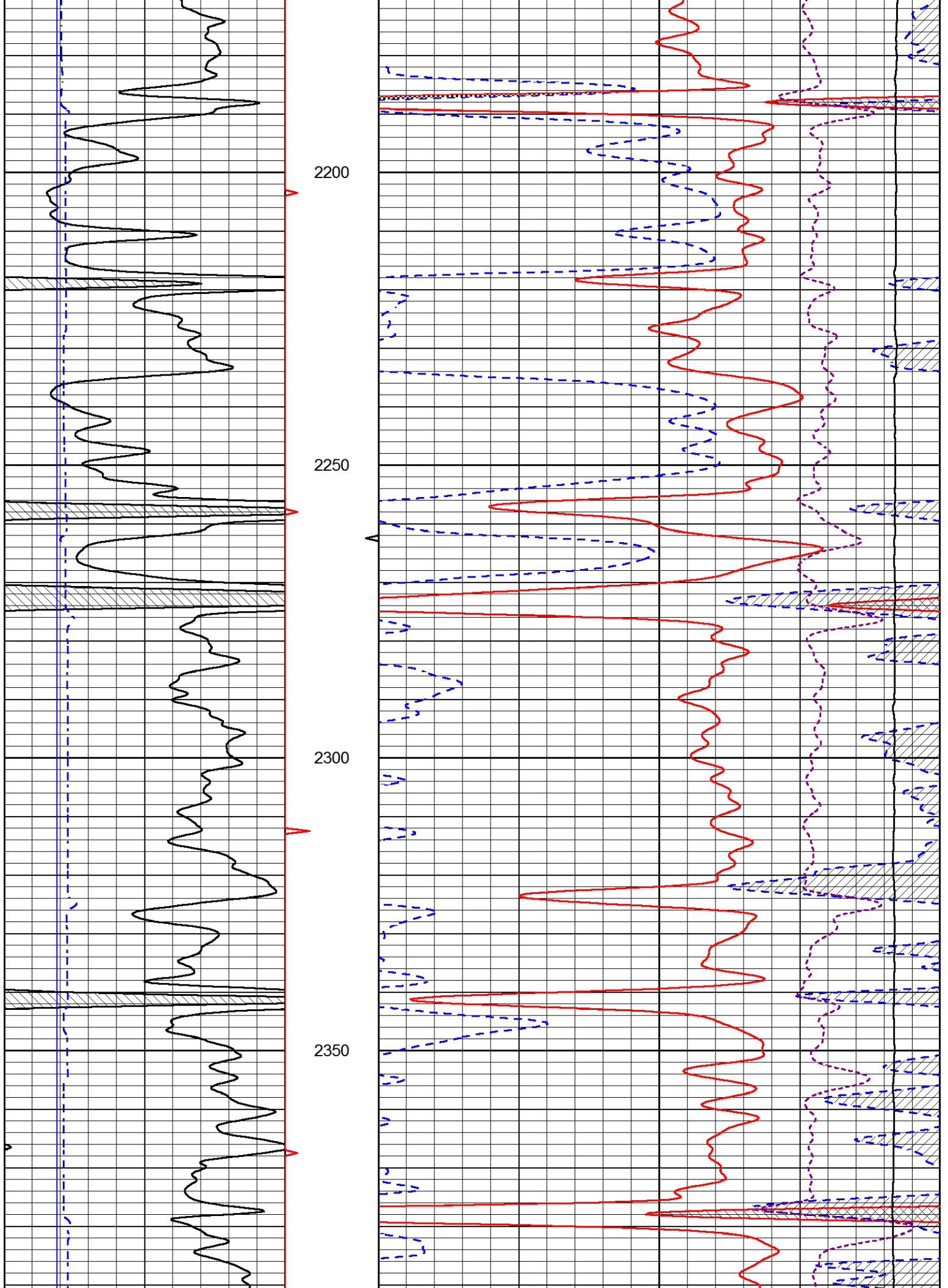


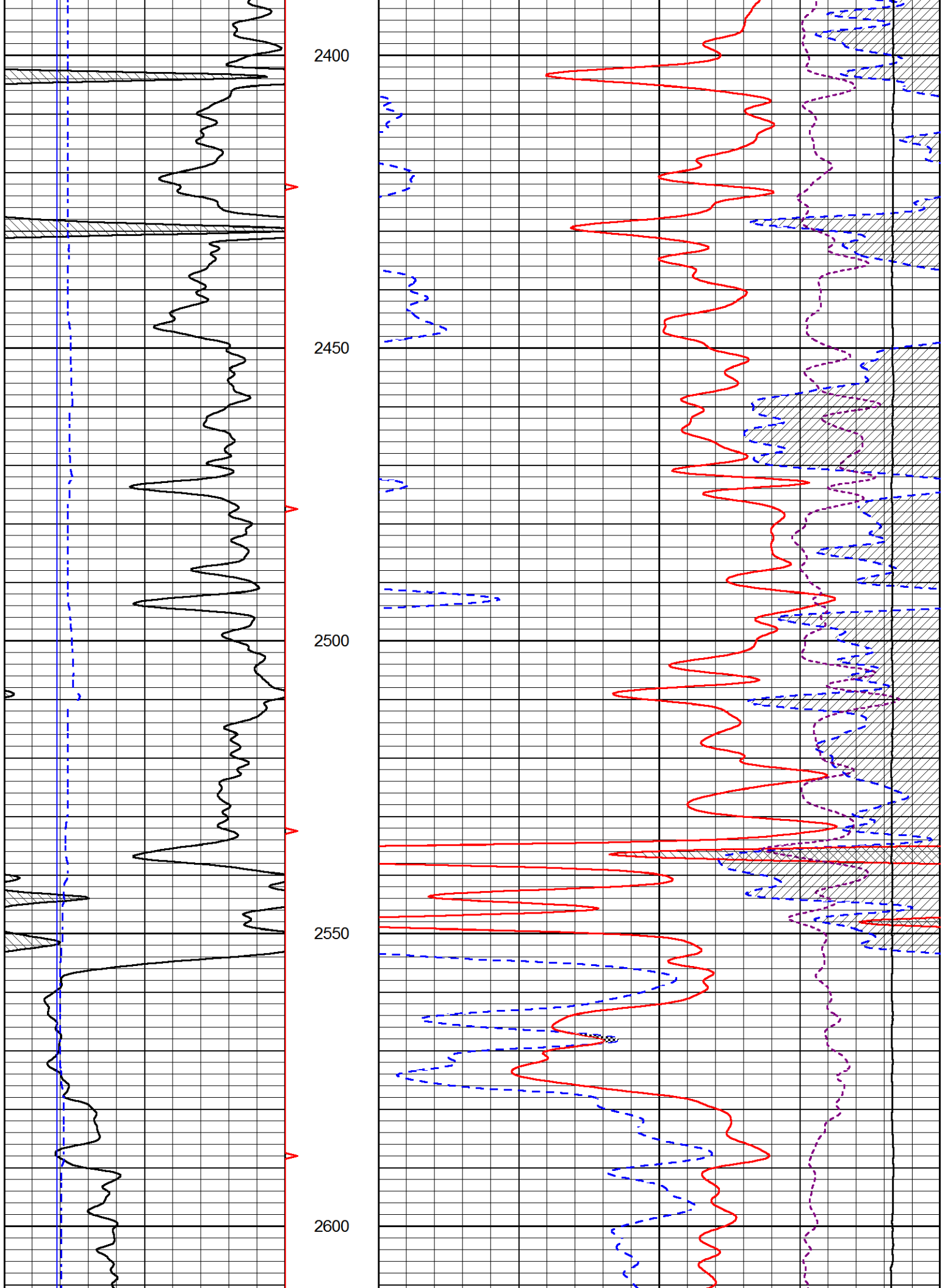


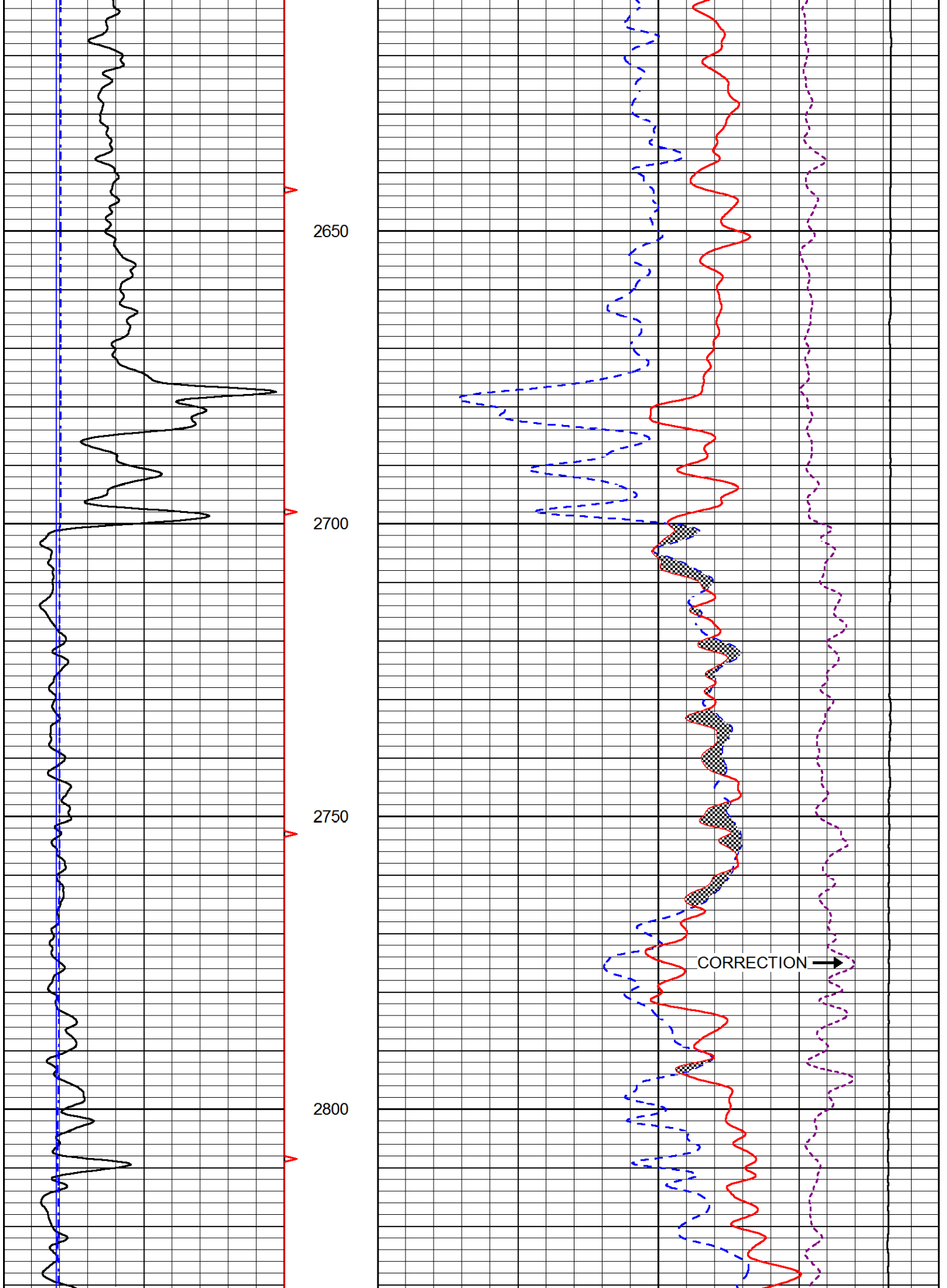


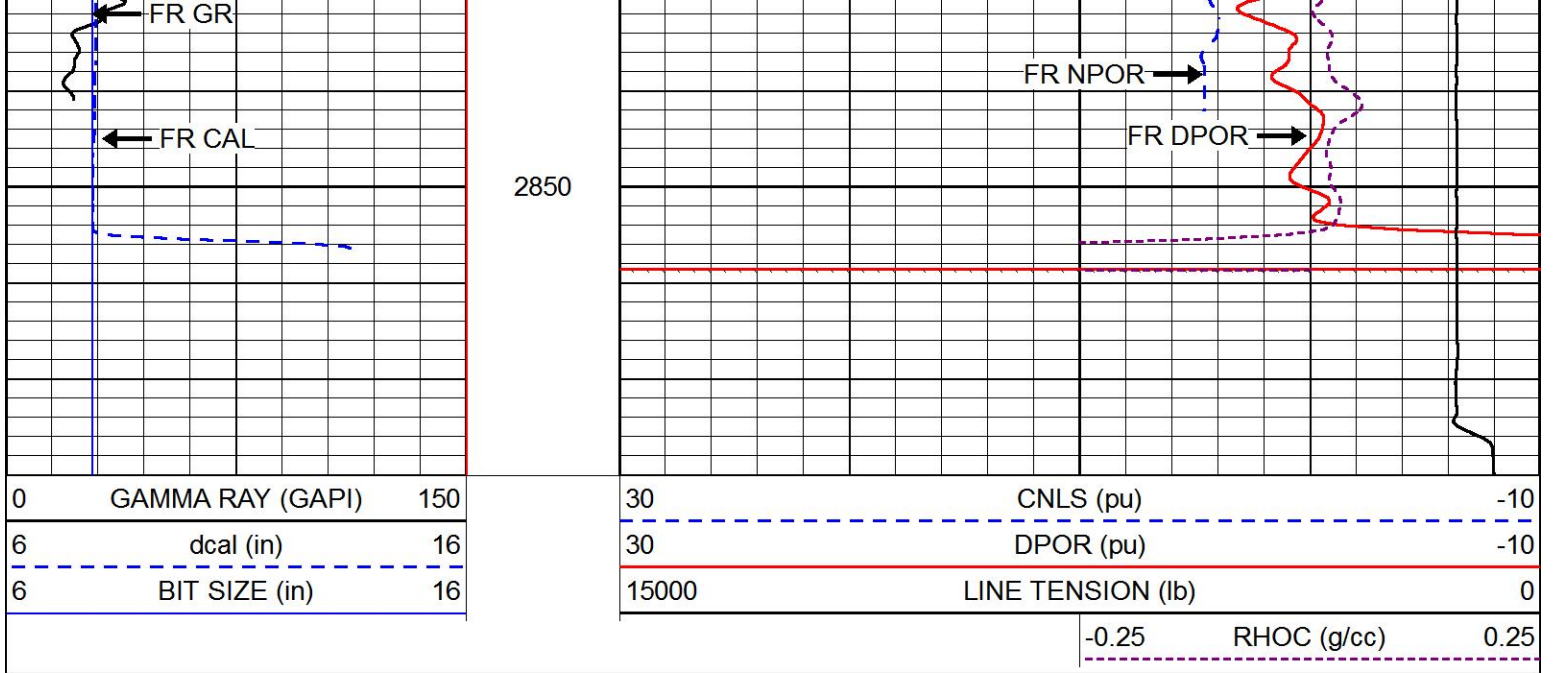






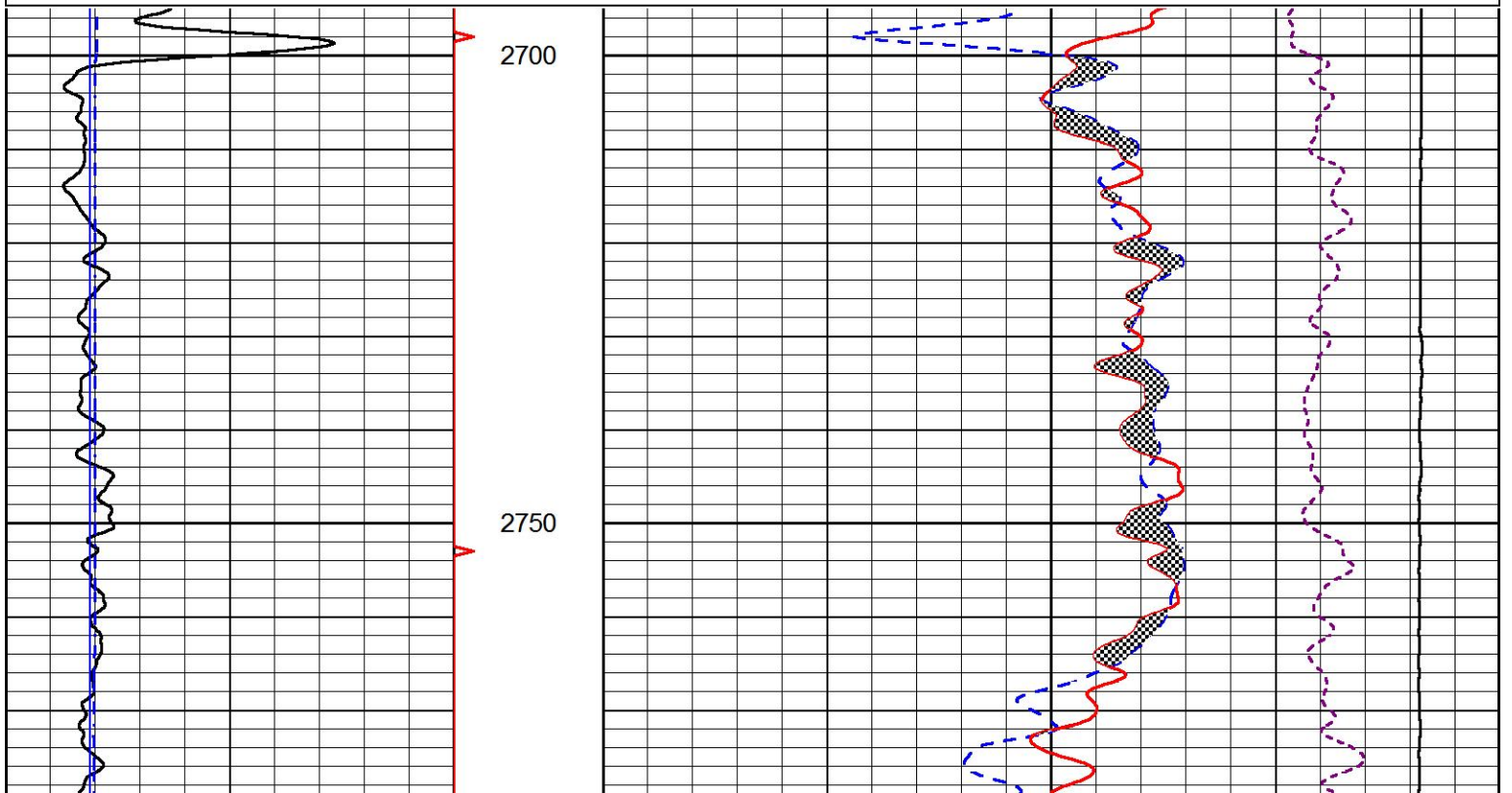
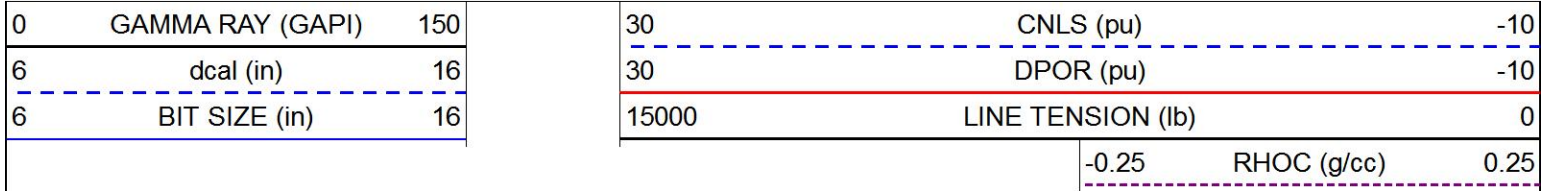


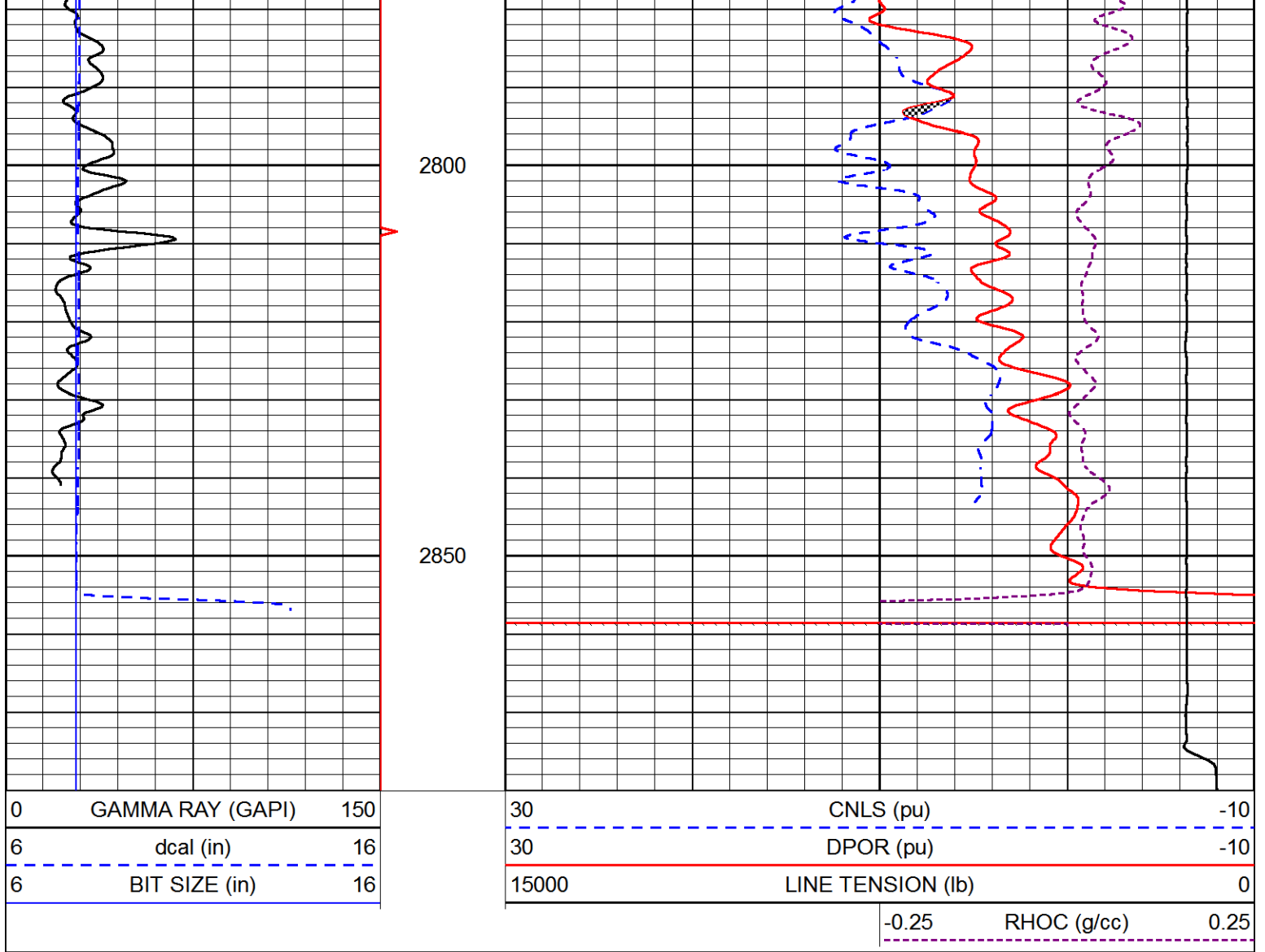




REPEAT SECTION

Database File perkins_kyser_hyde_26.db
 Dataset Pathname stackml/pass2.1
 Presentation Format cndlspec
 Dataset Creation Fri Dec 14 23:00:58 2018
 Charted by Depth in Feet scaled 1:240





Calibration Report

Database File perkins_kyser_hyde_26.db
 Dataset Pathname stackml/pass3.1
 Dataset Creation Fri Dec 14 23:00:49 2018

Dual Induction Calibration Report

Serial-Model: PSI 988-M&W
 Calibration Performed: Tue Nov 20 10:50:19 2018

Loop:	Readings		References			Results	
	Air	Loop	Air	Loop	mmho/m	Gain	Offset
Deep	178.615	710.235	0.000	255.800	mmho/m	0.525	-44.000
Medium	161.982	1441.110	0.000	255.800	mmho/m	0.380	-17.000

Microlog Calibration Report

Serial-Model: PSI-01-PSI STKBL ML
 Performed: Thu Mar 31 18:14:32 2016

Readings		References		Results	
Zero	Cal	Zero	Cal	m	b
0.0000	1.0000	0.0000	1.0000	0.0000	1.0000

Normal	0.0000	1.0000	0.0000	1.0000	Ohm-m	22500.0000	-1.0000
Inverse	0.0000	1.0000	0.0000	1.0000	Ohm-m	29500.0000	-1.0000
Caliper	1.0001	1.1397	6.5000	18.5000	in	86.0000	-82.4800

Compensated Density Calibration Report

Serial-Model: 144-84-M&W
 Source / Verifier: /
 Master Calibration Performed: Wed Nov 14 16:22:24 2018

Master Calibration

	Density		Far Detector	Near Detector	
Magnesium	1.755	g/cc	4298.32	5307.27	cps
Aluminum	2.675	g/cc	809.74	3408.43	cps
Spine Angle = 75.14			Density/Spine Ratio = 0.533		
	Size		Reading		
Small Ring	4.00	in	0.70		
Large Ring	14.00	in	0.04		

Compensated Neutron Calibration Report

Serial Number: tk10-MW
 Tool Model: M&W
 Calibration Performed: Wed Nov 16 11:21:36 2016

Detector	Readings	Target	Normalization
Short Space	6240.00 cps	1000.00 cps	1.6025
Long Space	460.00 cps	1000.00 cps	1.9500

Gamma Ray Calibration Report

Serial Number: 89-M&W
 Tool Model: M&W
 Calibration Performed: Tue Apr 11 17:08:01 2017

Calibrator Value: 1000.0 GAPI

Background Reading: 0.0 cps
 Calibrator Reading: 6.2 cps

Sensitivity: 0.5200 GAPI/cps



Company PERKINS OIL ENTERPRISES, INC.
 Well KYSER-HYDE #26
 Field BUSH-DENTON
 County ELK
 State KANSAS