

# MICRO LOG

Company BLACK STONE PETROLEUM, LLC  
 Well SWOB #1  
 Field OTIS-ALBERT  
 County RUSH  
 State KANSAS

Company BLACK STONE PETROLEUM, LLC  
 Well SWOB #1  
 Field OTIS-ALBERT  
 County RUSH State KANSAS

Location: API # : 15-165-22144-00-00  
 405' FSL & 510' FWL  
 SEC 26 TWP 18S RGE 16W  
 Permanent Datum GROUND LEVEL Elevation 1962'  
 Log Measured From KELLY BUSHING 9' A.G.L.  
 Drilling Measured From KELLY BUSHING  
 Other Services CDL/CNL/DIL SONIC  
 Elevation K.B. 1971  
 D.F. 1969  
 G.L. 1962

Date	04/17/17
Run Number	TWO
Depth Driller	3619
Depth Logger	3595
Bottom Logged Interval	3575
Top Log Interval	1500
Casing Driller	8 5/8" @ 374
Casing Logger	374
Bit Size	8 3/4"
Type Fluid in Hole	CHEMICAL MUD
Density / Viscosity	9.1/38
pH / Fluid Loss	9.8/6.9
Source of Sample	FLOWLINE
Rm @ Meas. Temp	.10@70
Rmt @ Meas. Temp	.075@70
Rmc @ Meas. Temp	.12@70
Source of Rmf / Rmc	MEASURED
Rm @ BHT	.06@112
Time Circulation Stopped	2 HOURS
Time Logger on Bottom	///
Maximum Recorded Temperature	112F
Equipment Number	4010
Location	HAYS, KANSAS
Recorded By	GUS PFANENSTIEL
Witnessed By	BOB BAYER

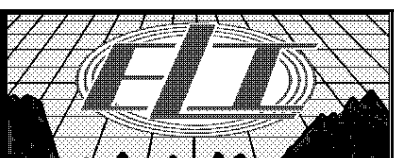
<<< Fold Here >>>

All interpretations are opinions based on inferences from electrical or other measurements and we cannot and do not guarantee the accuracy or correctness of any interpretation, and we shall not, except in the case of gross or willful negligence on our part, be liable or responsible for any loss, costs, damages, or expenses incurred or sustained by anyone resulting from any interpretation made by any of our officers, agents or employees. These interpretations are also subject to our general terms and conditions set out in our current Price Schedule.

### Comments

THANK YOU FOR USING ELI WIRELINE, HAYS, KS. (785) 628-6395

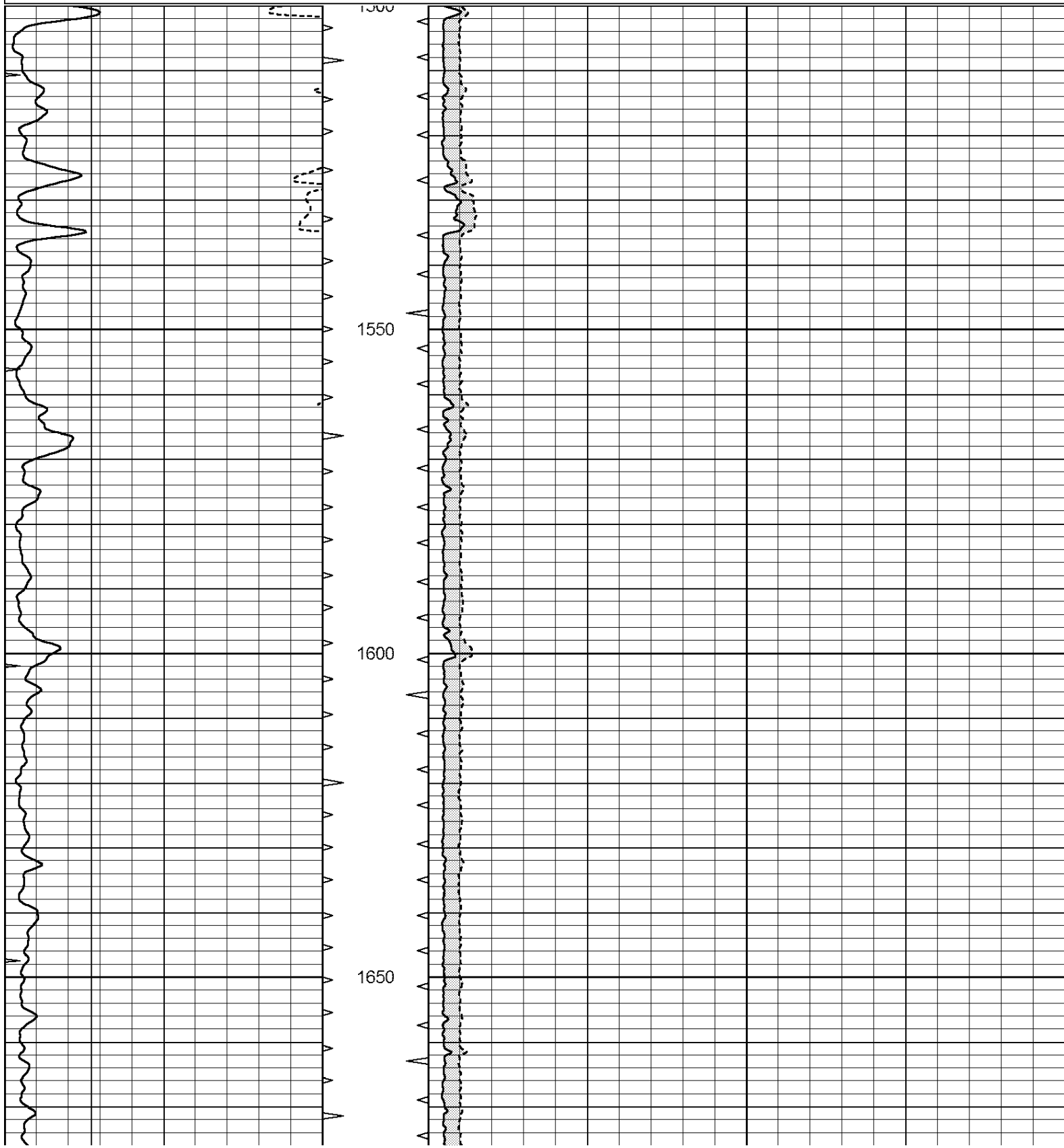
DIRECTIONS  
 96 HIGHWAY OUT OF RUSH CENTER EAST TO 380 RD.  
 SOUTH 3/4 MILE  
 EAST INTO.

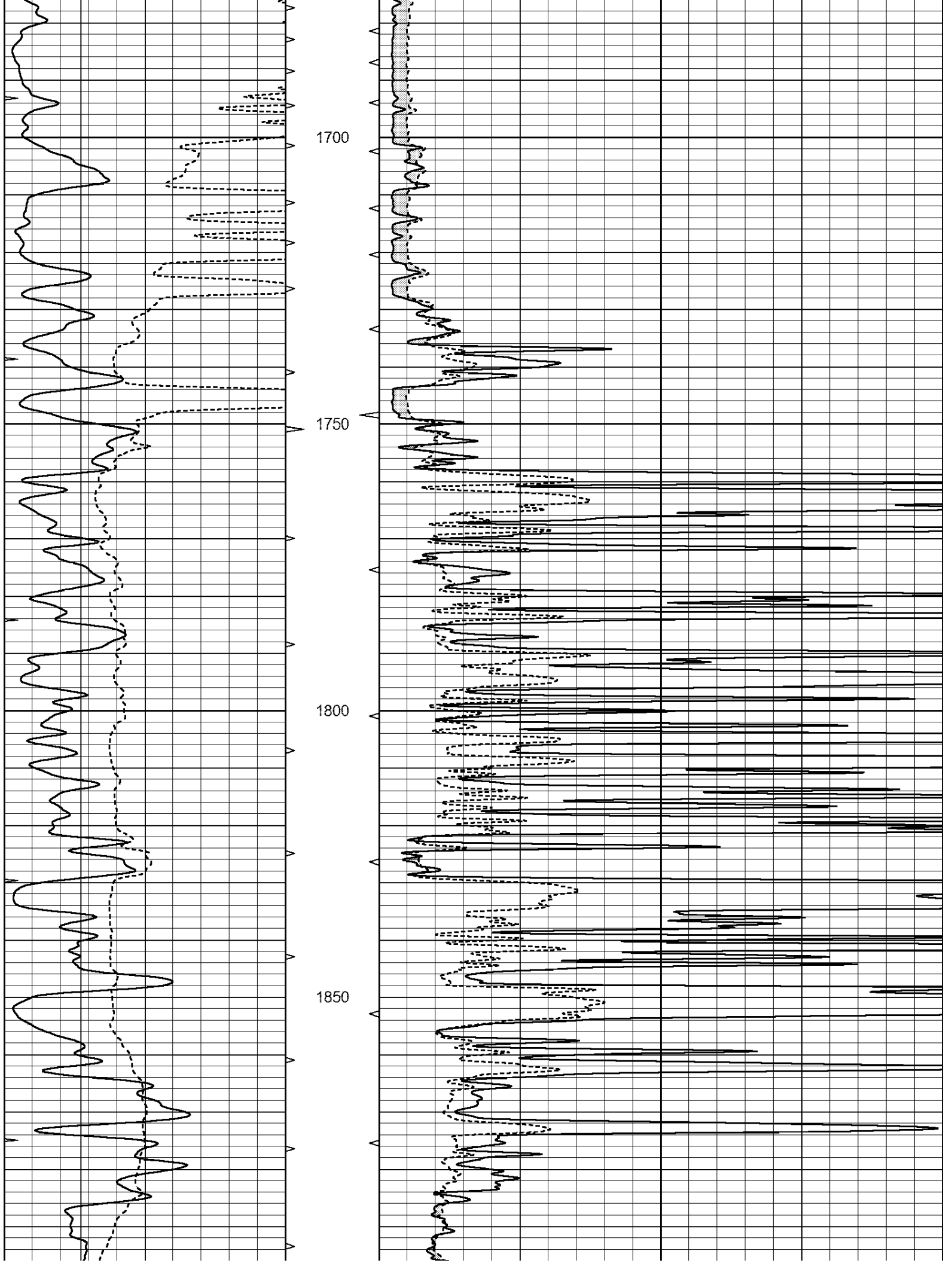


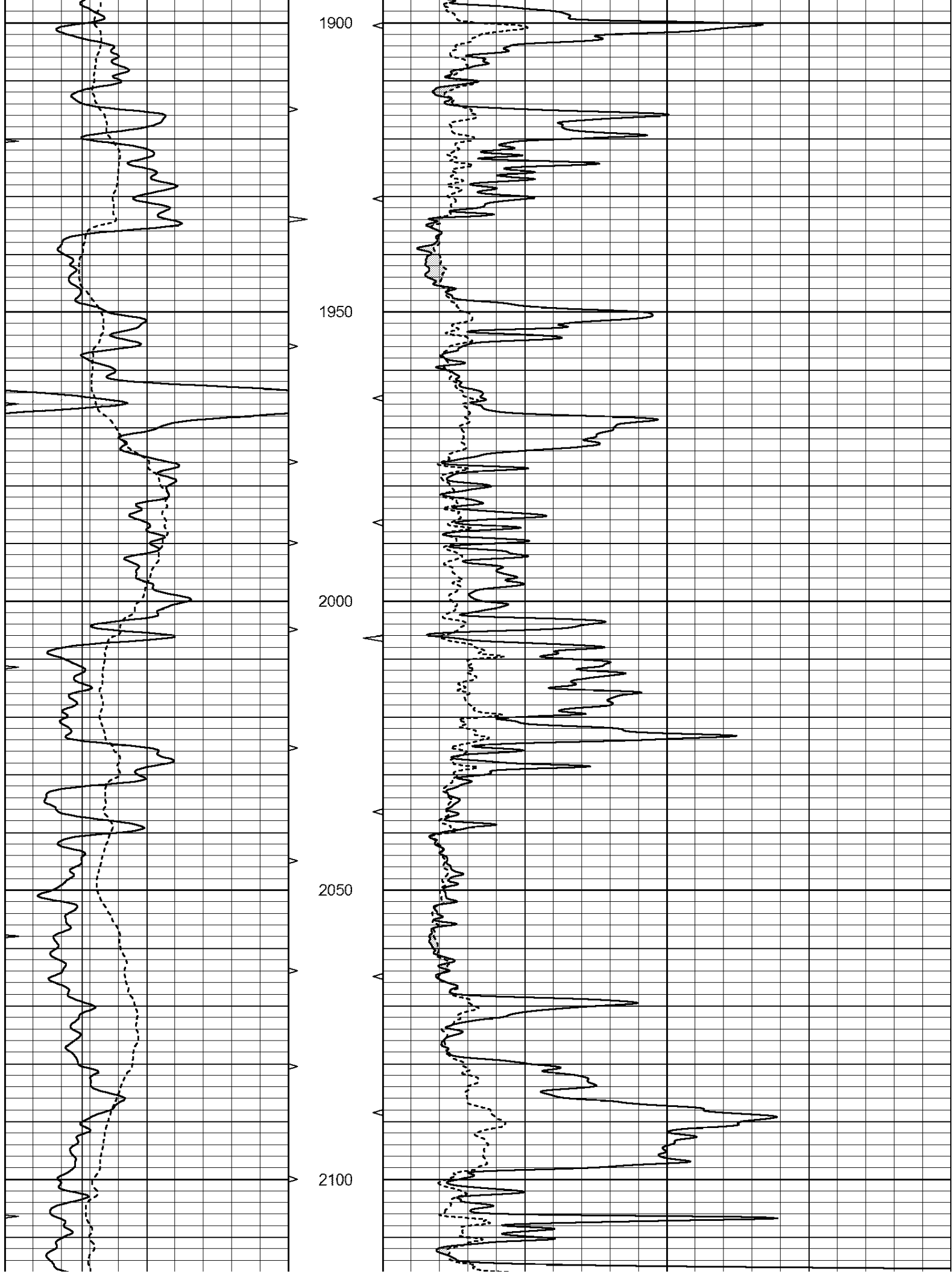
# MAIN PASS

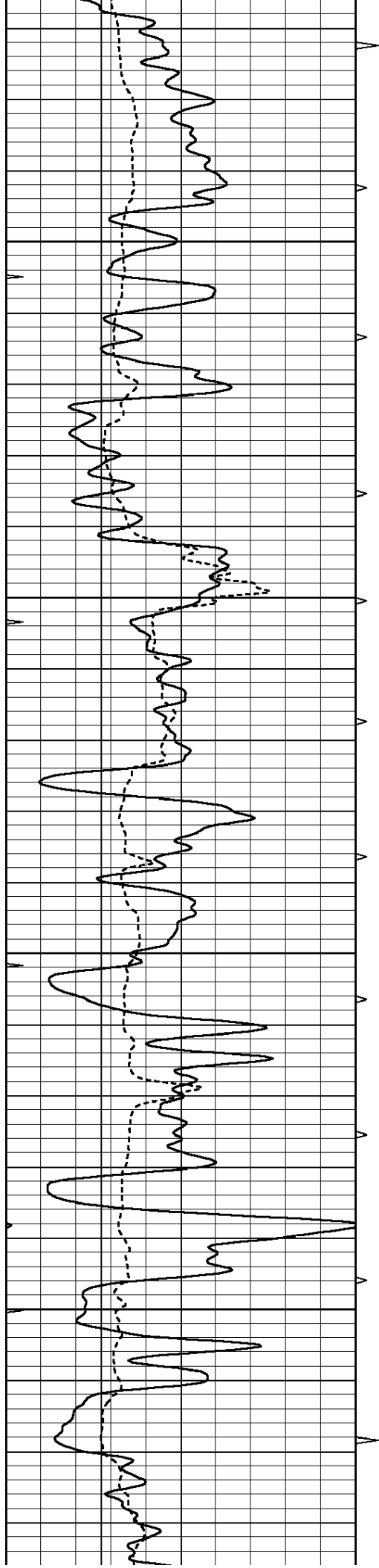
Database File: 1462ddn.db  
 Dataset Pathname: pass6.1  
 Presentation Format: \_micro  
 Dataset Creation: Tue Apr 18 00:43:49 2017 by Calc Open-Cased 090629  
 Charted by: Depth in Feet scaled 1:240

0	GAMMA RAY (GAPI)	150	ABHV	0	MEL1.5 (Ohm-m)	20
6	CALIPER (in)	16	10 (ft3)	0	MEL2.0 (Ohm-m)	20
0	MINMK	20	TBHV			
			0 (ft3)	10		







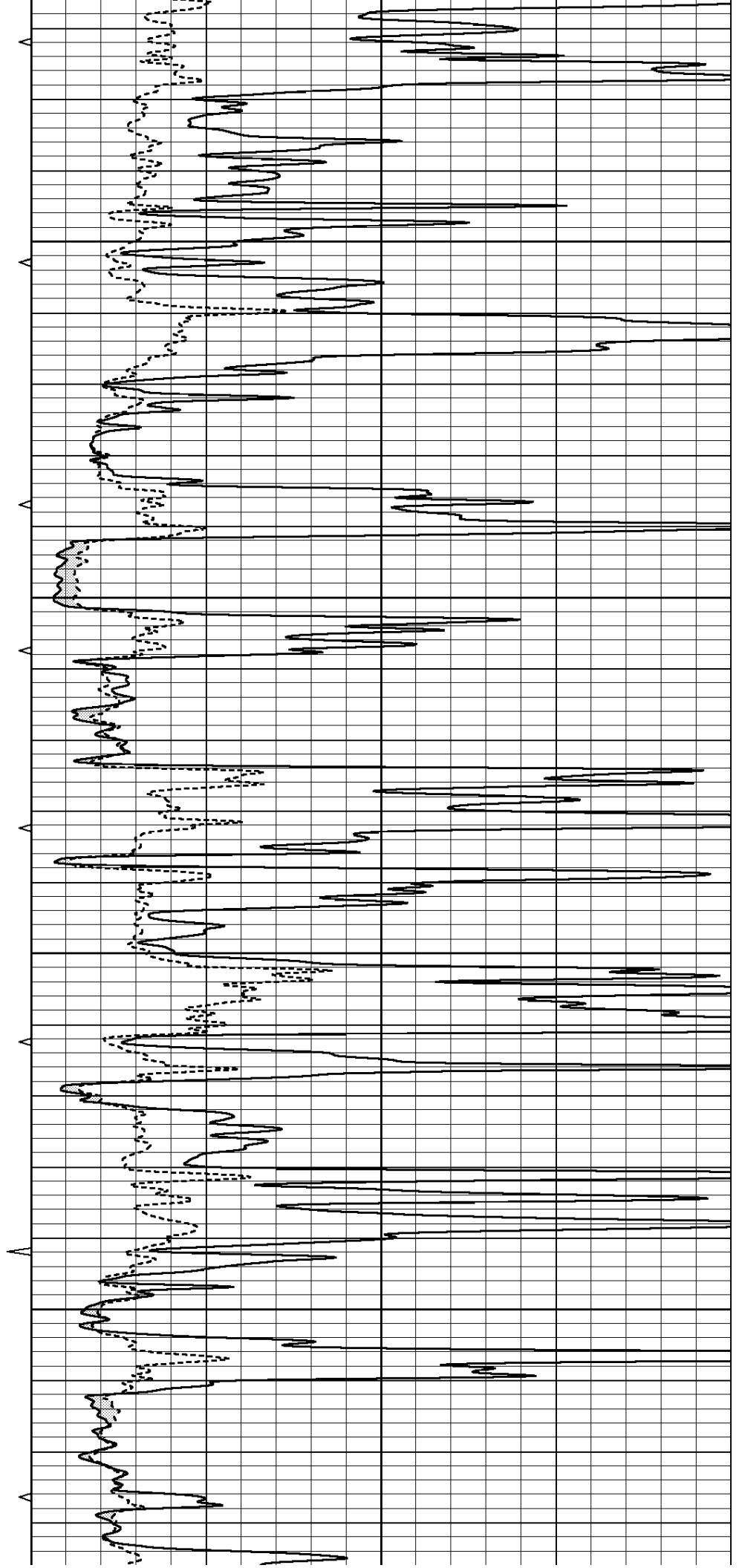


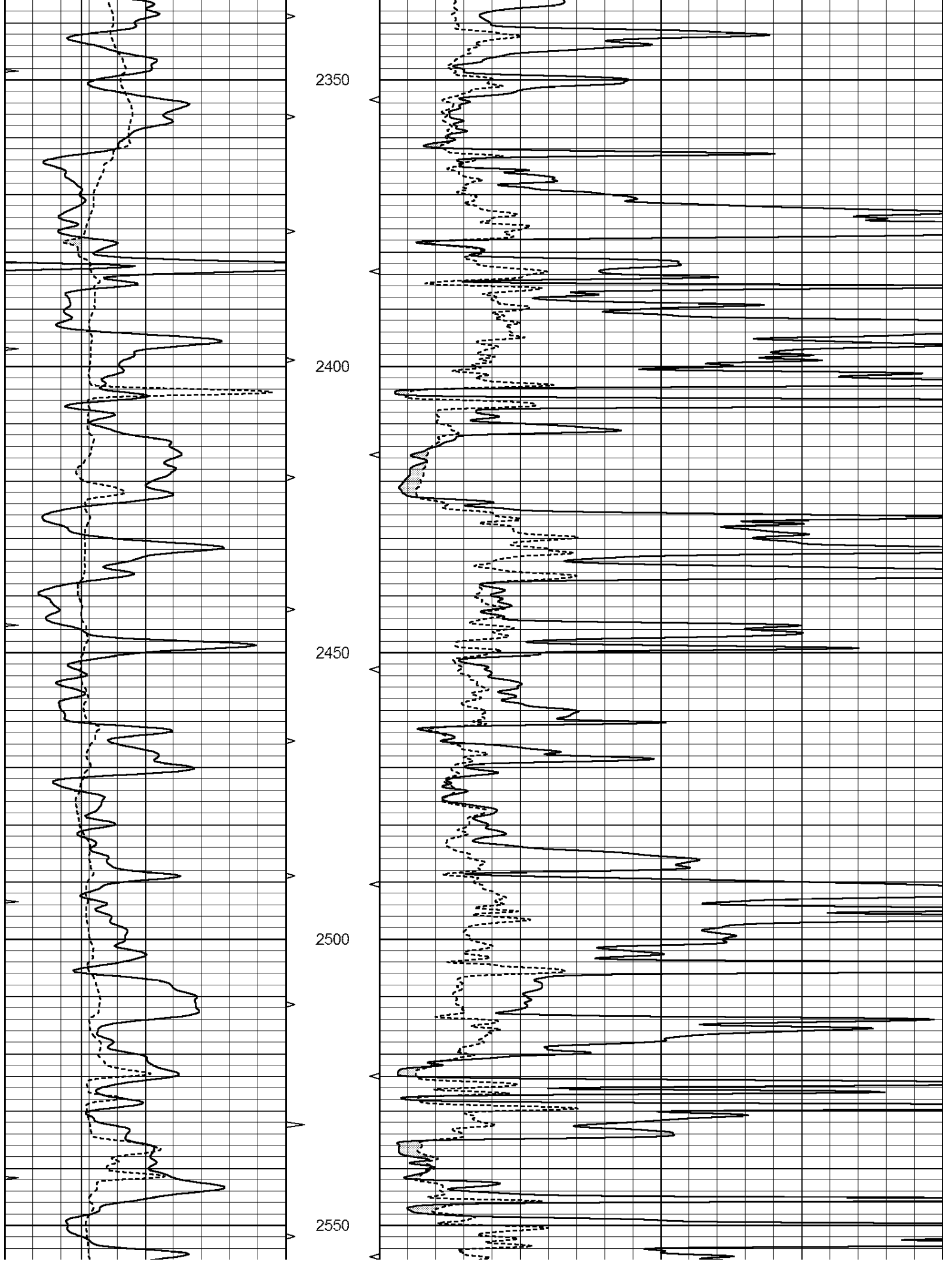
2150

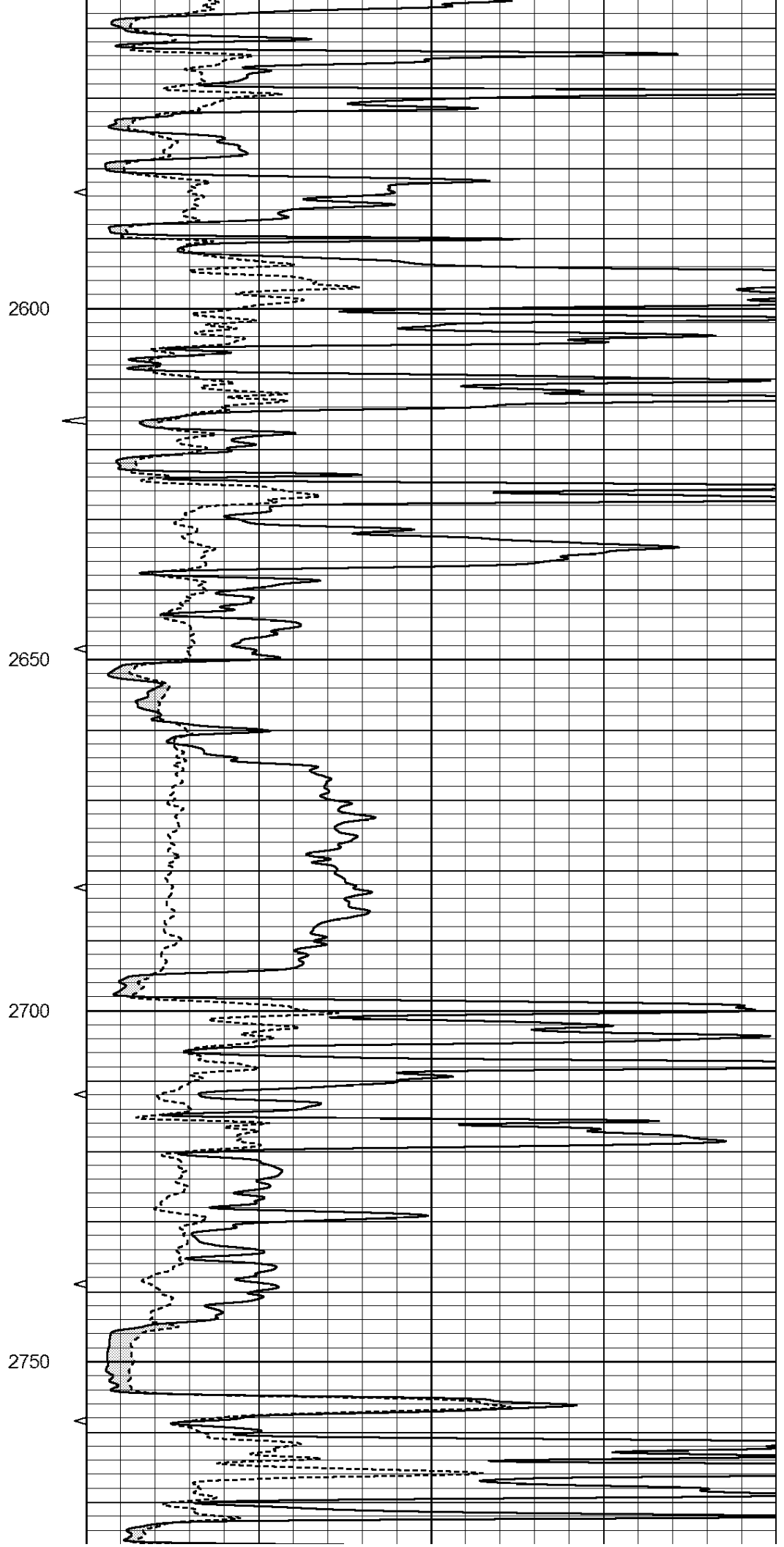
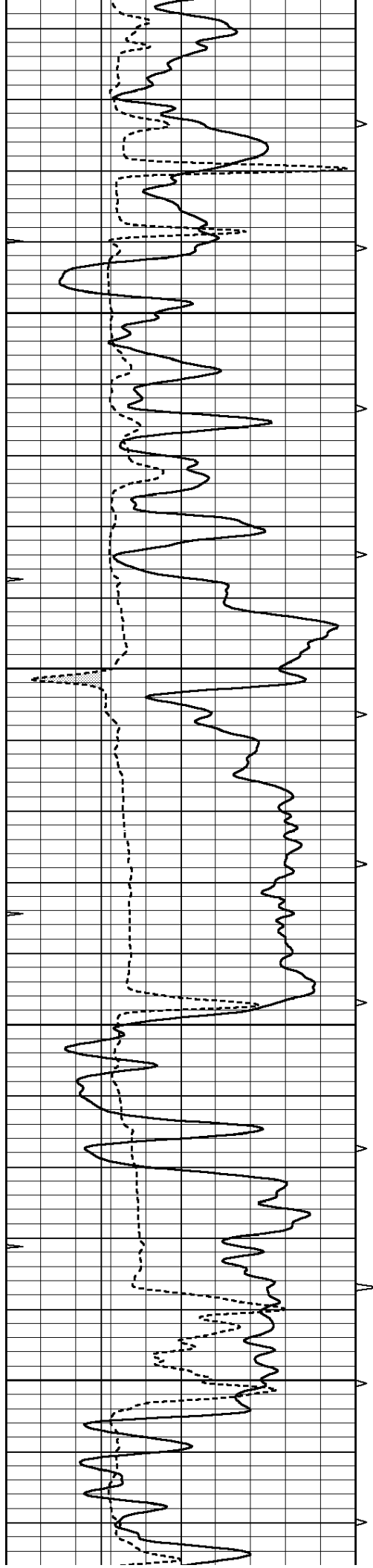
2200

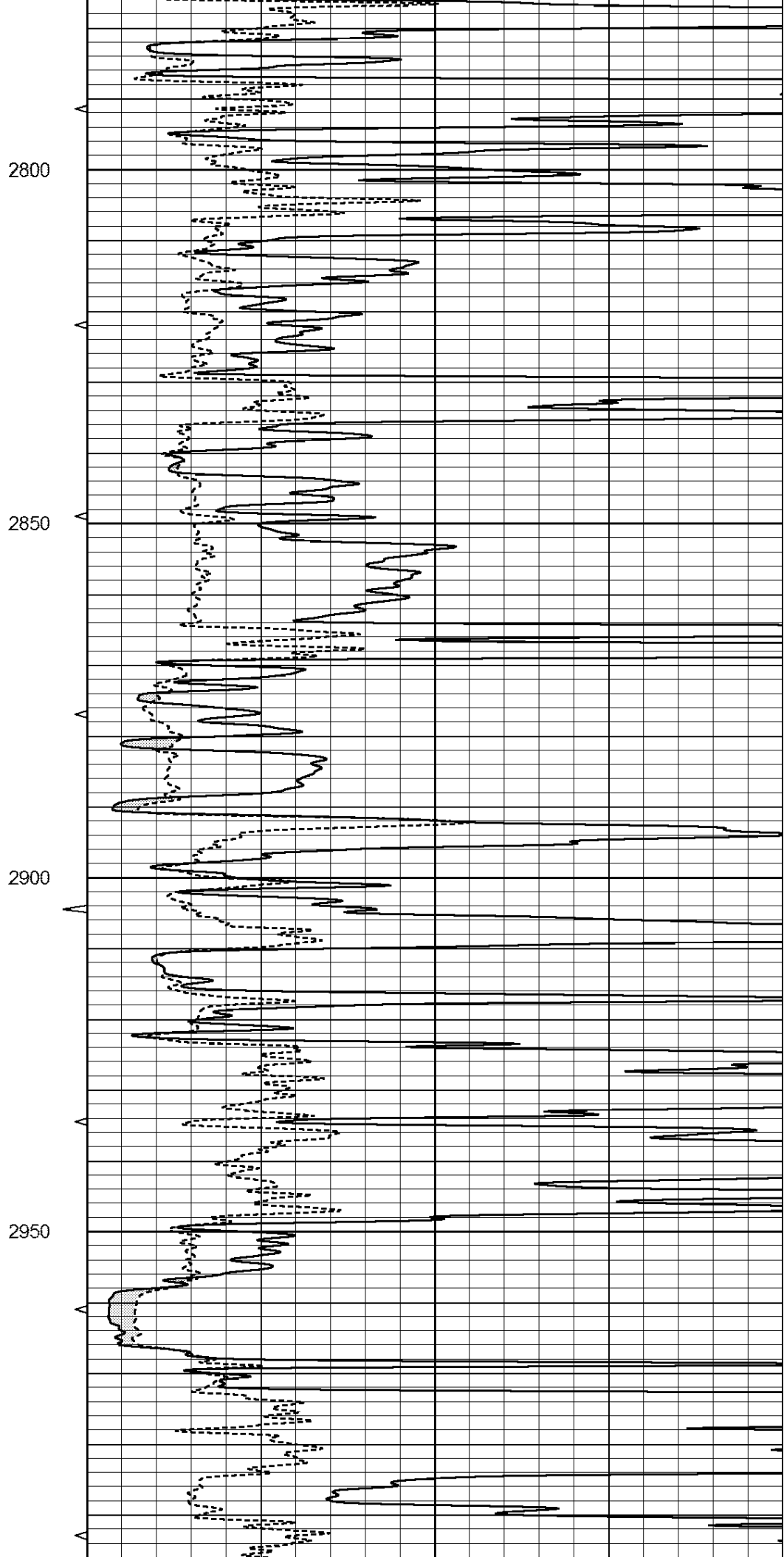
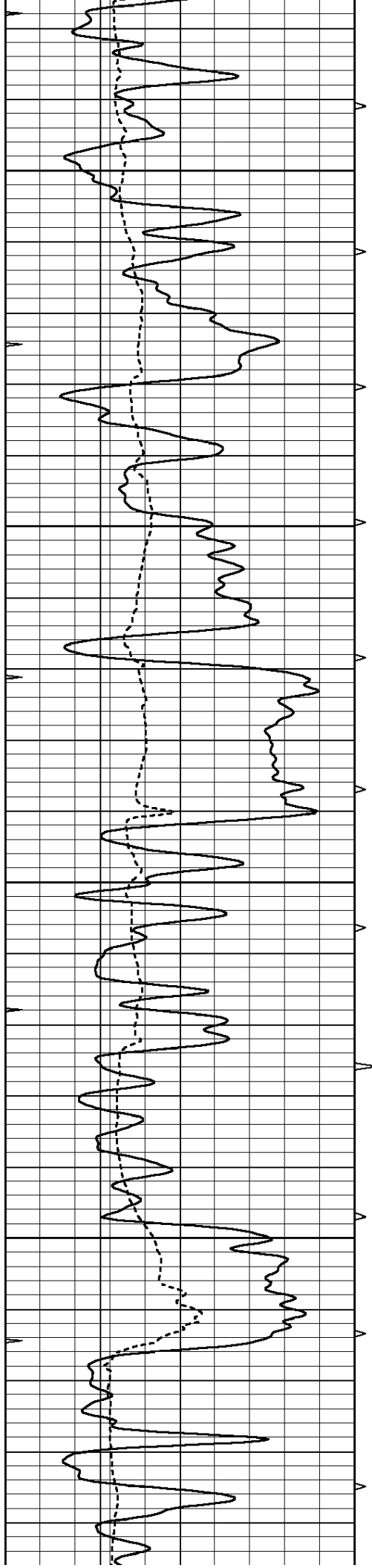
2250

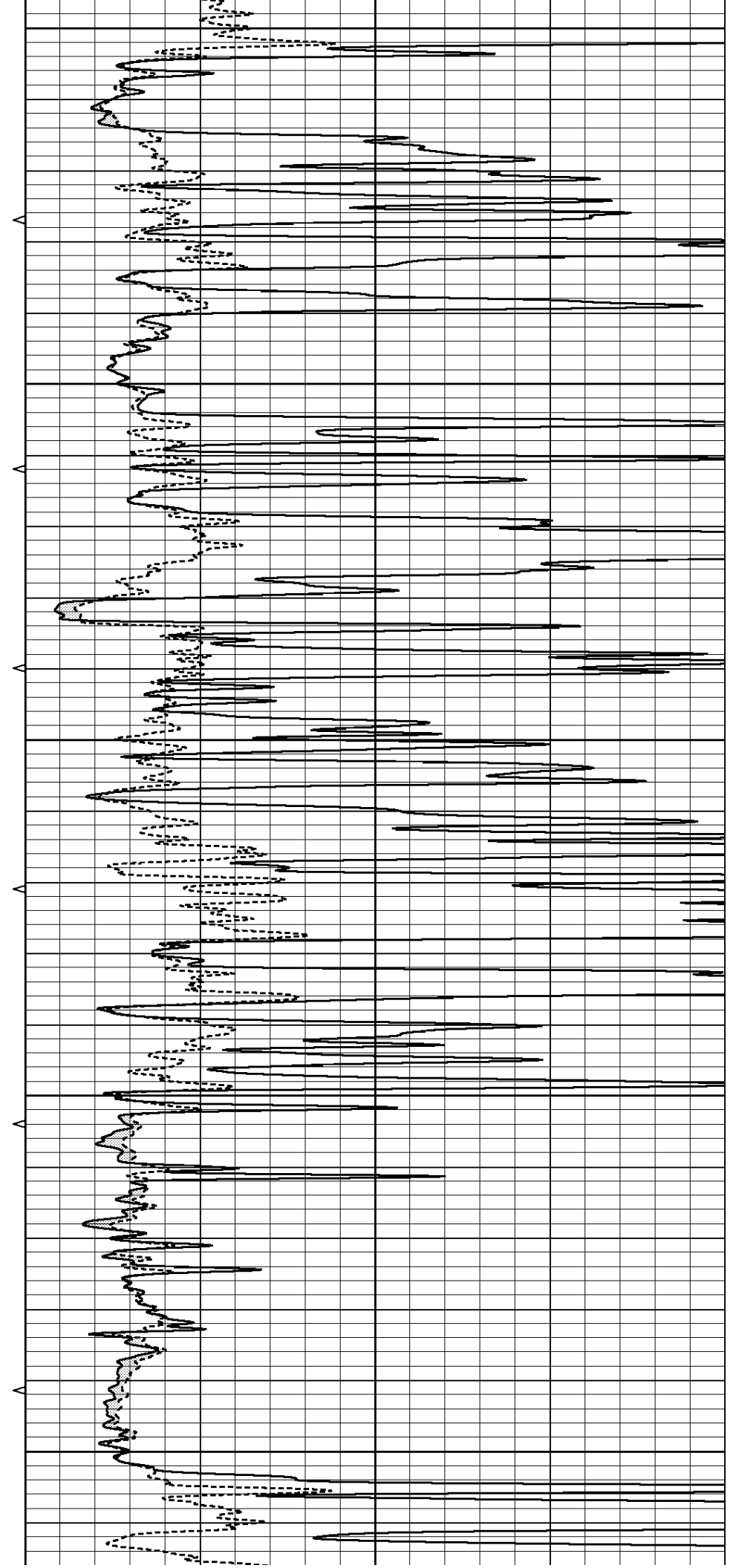
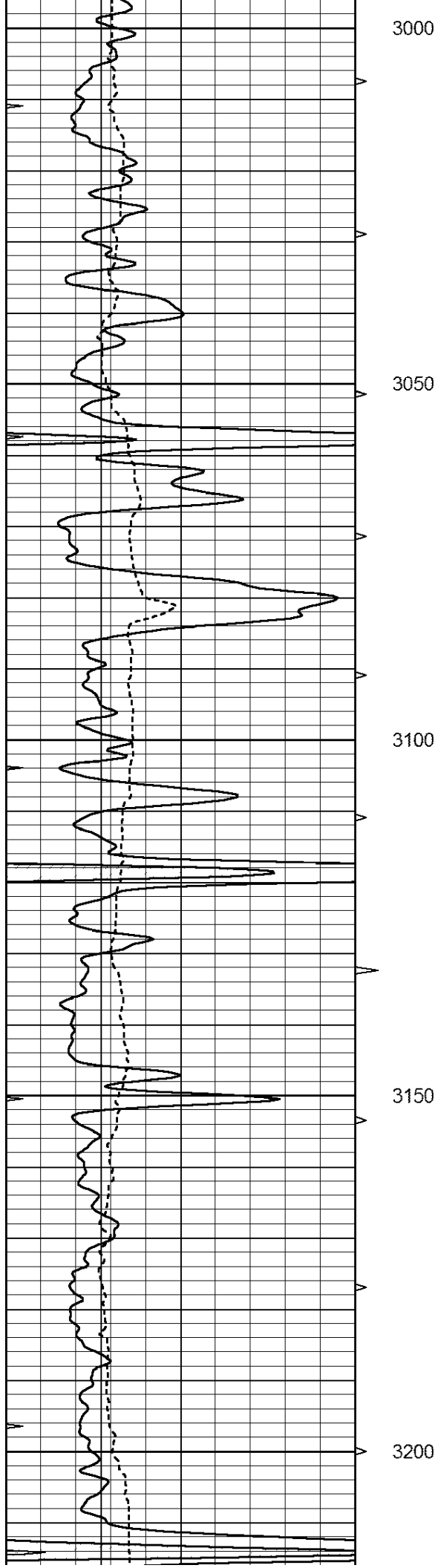
2300

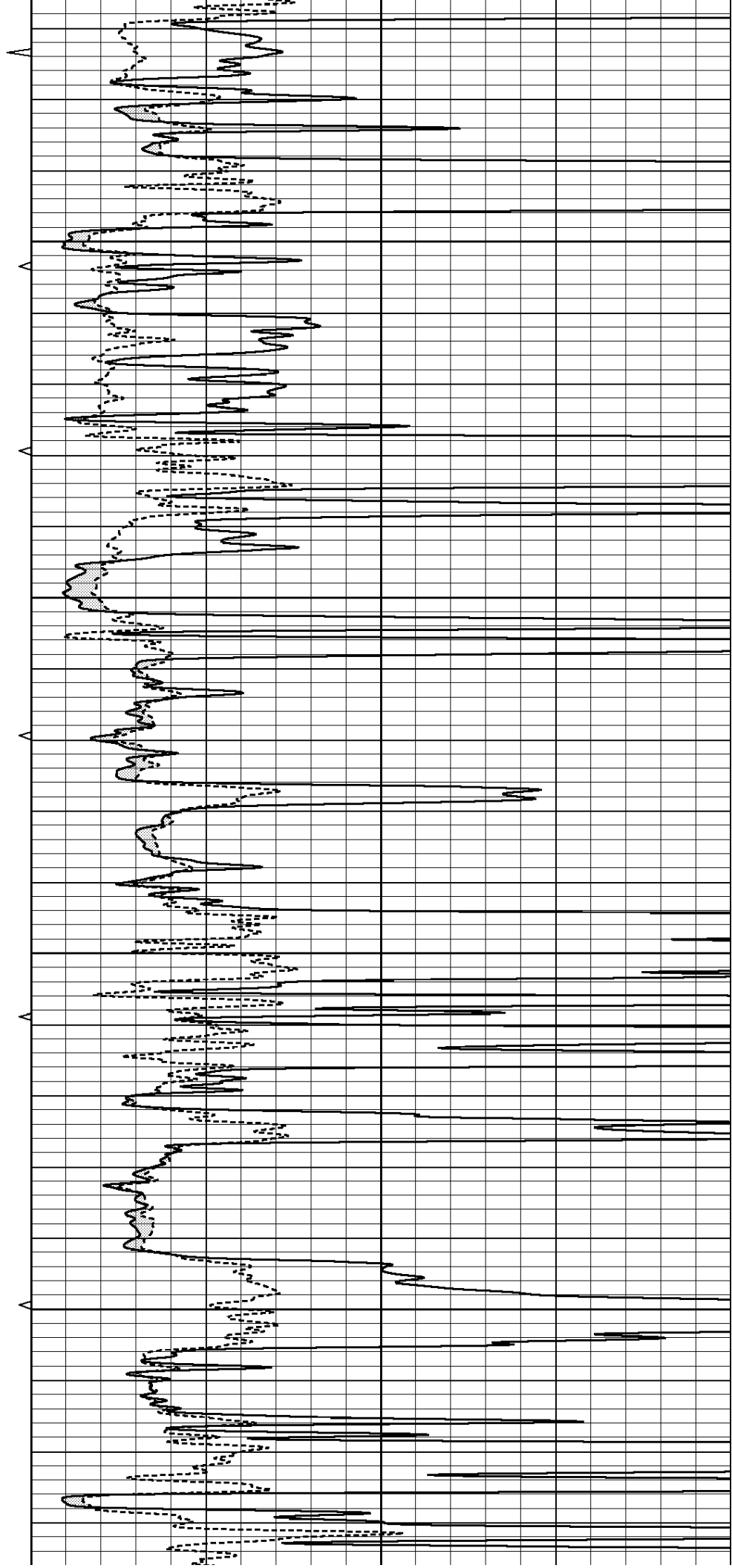
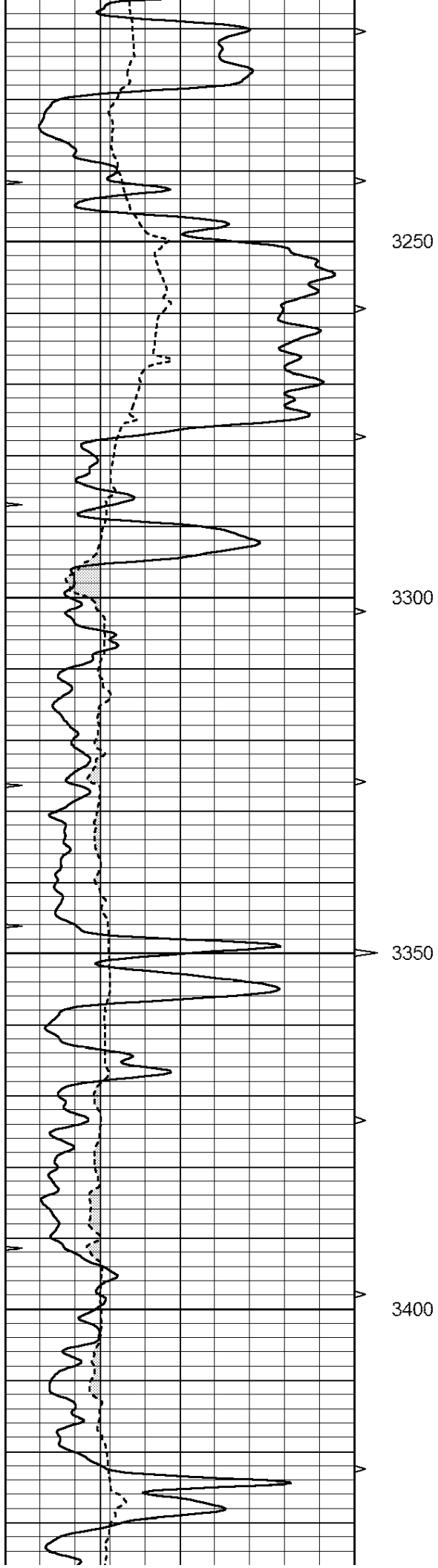


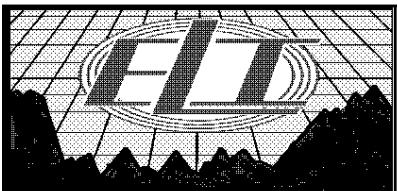
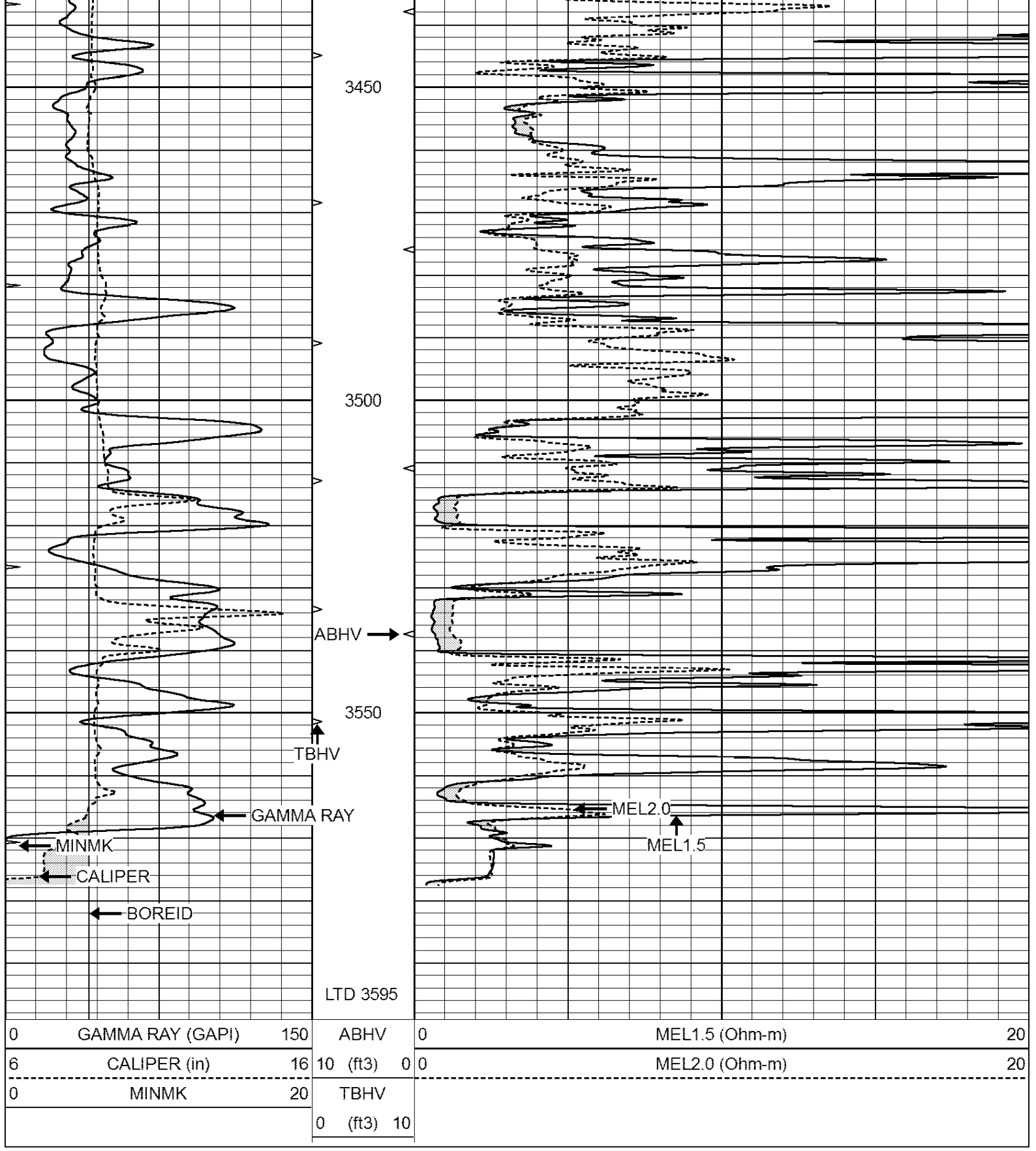












# REPEAT SECTION

0	GAMMA RAY (GAPI)	150	ABHV	0	MEL1.5 (Ohm-m)	20
6	CALIPER (in)	16	10 (ft3)	0 0	MEL2.0 (Ohm-m)	20
0	MINMK	20	TBHV			
			0 (ft3)	10		

