



# MICRO LOG

Company	DOLOMITE RESOURCES CORP.
Well	WALSH #32-1
Field	WILDCAT
County	GRAHAM
State	KANSAS
Location:	SEC 32 T14P 10S R9E 25W 1125' FEL & 2292' FSL
Permanent Datum	GROUND LEVEL
Log Measured From	KELLY BUSHING
Drilling Measured From	KELLY BUSHING
Run Number	TWO
Depth Diller	4070
Depth Logger	4088
Bottom Logged Interval	4085
Log Log Interval	6.530 @ 24"
Casing Letter	
Casing Logger	
Case Log	7.28
Top Seal in Hole	
Flow Back in Hole	
Dens./Viscosity	CHEMICAL LIND
pH/Fluid Loss	0.035
Source of Sample	FLOWLINE
Run @ Meas. Temp	10.588
Run @ Meas. Temp	3508/75F
Run @ Meas. Temp	7138/75F
Run @ Meas. Temp	1148/75F
Run @ Meas. Temp	MEASUREMENT
Run @ Meas. Temp	588@117F
Time Circulation Stopped	4:00 PMS
Time Log on Bottom	1:00 A.M.
Maximum Recorded Temperature	117F
Equipment Number	9222388
Location	HAYS KANSAS
Recorded By	JEFF LIEBERS
Witnessed By	TOM PROWOLD

<<< Fold Here >>>

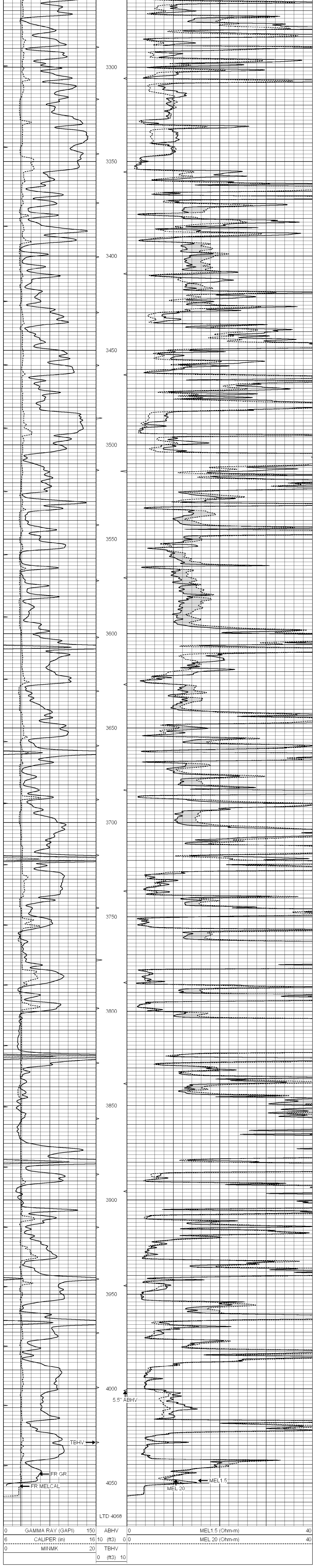
All interpretations are opinions based on inferences from electrical or other measurements and we cannot and do not guarantee the accuracy or correctness of any interpretation, and we shall not, except in the case of gross or willful negligence on our part, be liable or responsible for any loss, costs, damages, or expenses incurred or sustained by anyone resulting from any interpretation made by any of our officers, agents or employees. These interpretations are also subject to our general terms and conditions set out in our current Price Schedule.

Comments

THANK YOU FOR USING ELI WIRELINE HAYS, KANSAS (785) 628-6395  
DIRECTIONS  
COLLYER, KS., 1W. ON OLD 40 TO "RD. 120", 7N. TO CURVE, TAKE JOG E. TO "RD. 120", 1 MORE N., W.

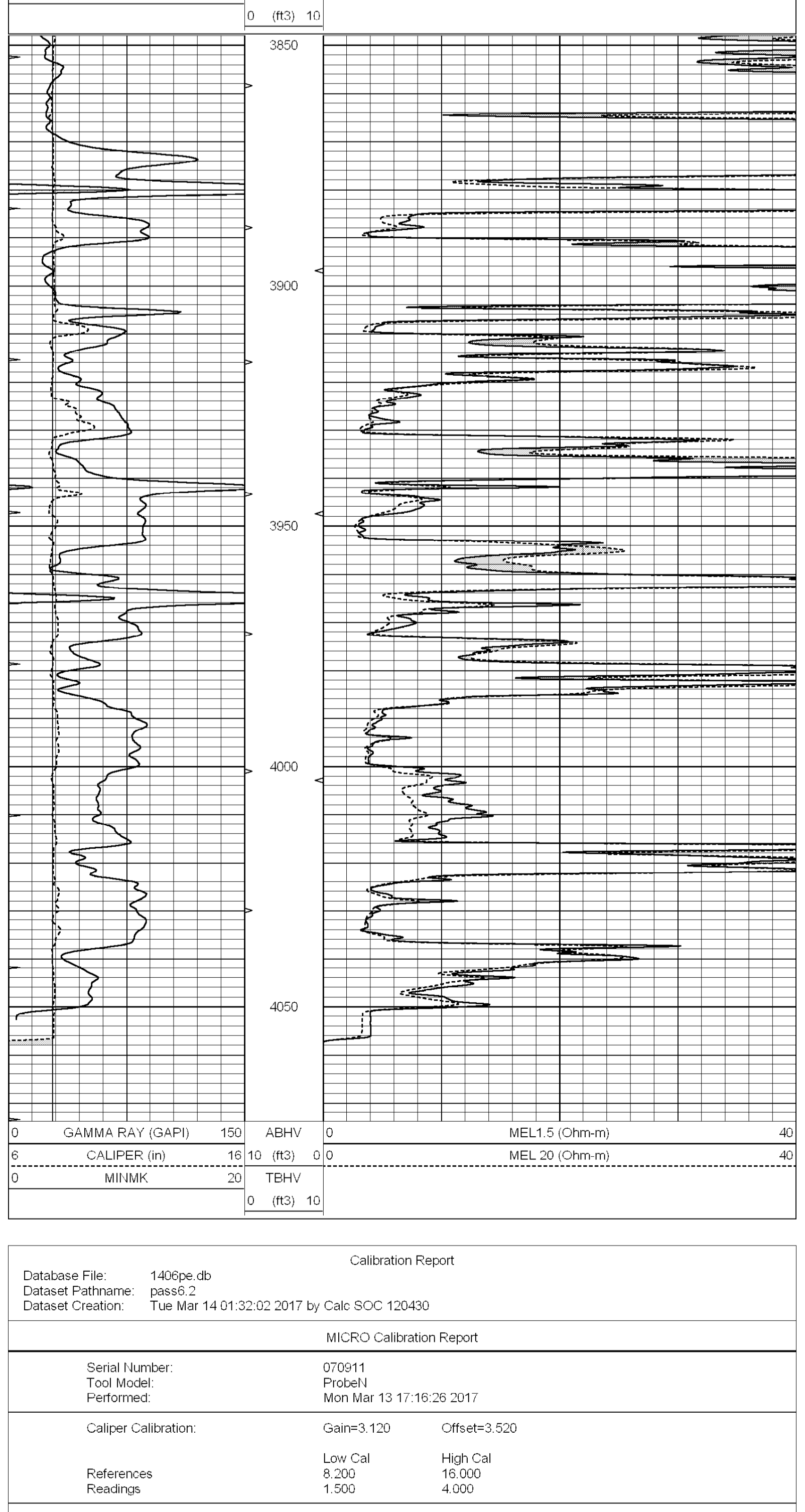
# MAIN SECTION

Database File: 1406pe.db  
Dataset Pathname: pass6.2  
Presentation Format: micro  
Dataset Creation: Tue Mar 14 01:32:02 2017 by Calc SOC 120430  
Charted by: Depth in Feet scaled 1:240



# REPEAT SECTION

Database File: 1406pe.db  
Dataset Pathname: pass5.1  
Presentation Format: micro  
Dataset Creation: Tue Mar 14 01:32:02 2017 by Calc SOC 120430  
Charted by: Depth in Feet scaled 1:240



Calibration Report  
Database File: 1406pe.db  
Dataset Pathname: pass6.2  
Dataset Creation: Tue Mar 14 01:32:02 2017 by Calc SOC 120430

MICRO Calibration Report

Serial Number:	070911
Tool Model:	ProbeN
Performed:	Mon Mar 13 17:16:26 2017

Caliper Calibration:	Gain=3.120	Offset=3.520
References Readings	Low Cal 8.200 1.500	High Cal 16.000 4.000

1.5" Calibration:	Gain=40.000	Offset=0.000
References Readings	Low Cal 0.000 0.001	High Cal 20.000 1.240

2" Calibration:	Gain=48.000	Offset=0.000
References Readings	Low Cal 0.000 0.001	High Cal 20.000 1.076

Gamma Ray Calibration Report

Serial Number:	110959
Tool Model:	OPEN GR
Performed:	Mon Mar 14 00:52:54 2017

Calibrator Value:	1.0	GAPI
-------------------	-----	------

Background Reading:	0.0	cps
Calibrator Reading:	1.0	cps

Sensitivity:	0.2100	GAPI/cps
--------------	--------	----------