

COMPENSATED DENSITY / NEUTRON PE LOG

Company		DOLOMITE RESOURCES CORP.	
Well	WALSH #32-1	Field	WILDCAT
County	GRAHAM	State	KANSAS
Location	1125 F&L 2397 F&L	APR #	15-065-24123-0-000
SEC	32	TWP	10S
R	05E	R	25N
Log Measured From	GROUND LOG/EL	Elevation	2434
Log Measured From	KELLY BISHING	Elevation	2434
Drilling Measured From	KELLY BISHING	Elevation	2434
Run Number	01E	Chief Services	DILUMEL
Depth Order	4070	SOILC	
Bottom Logged Interval	4088		
Current Depth	4088		
Casino Logger	6.56/0.227		
Bit Size	7.75"		
Type Fluid in Hole	CEMENTAL MUD	CHLORIDES	1.800 PPM
Density / Viscosity	8.0/65		
pad / Fluid Loss	10.5/6.8		
Source of Sample	FLOWLINE		
Run @ Mass Temp	350/87.25		
Run @ Mass Temp	71/80.25		
Scale of Pen / TWS	550/117F		
Time Circulation Stopped	2:00 HRS		
Time Logger on Bottom	10:45 P.M.		
Equipment Number	117F		
Location	HAYS, KANSAS		
Recorded By	JEFF LIEBERS		
Versioned By	JOHN PRONCU		

All interpretations are opinions based on electrical or other measurements and we cannot and do not guarantee the accuracy or correctness of any interpretation, and we shall not, except in the case of gross or willful negligence on our part, be liable or responsible for any loss, costs, damages, or expenses incurred or sustained by anyone resulting from any interpretation made by any of our officers, agents or employees. These interpretations are also subject to our general terms and conditions set out in our current Price Schedule.

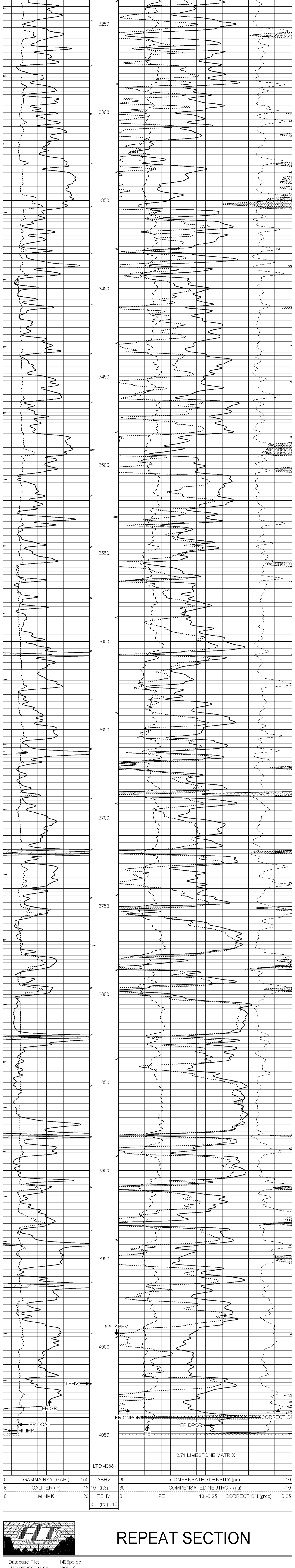
THANK YOU FOR USING ELI WIRELINE HAYS, KANSAS (785) 628-6395 DIRECTIONS COLLYER, KS., 1W. ON OLD 40 TO "RD. 120", 7N. TO CURVE, TAKE JOG E. TO "RD. 120", 1 MORE N., W.

Comments

THANK YOU FOR USING ELI WIRELINE HAYS, KANSAS (785) 628-6395 DIRECTIONS COLLYER, KS., 1W. ON OLD 40 TO "RD. 120", 7N. TO CURVE, TAKE JOG E. TO "RD. 120", 1 MORE N., W.

MAIN SECTION

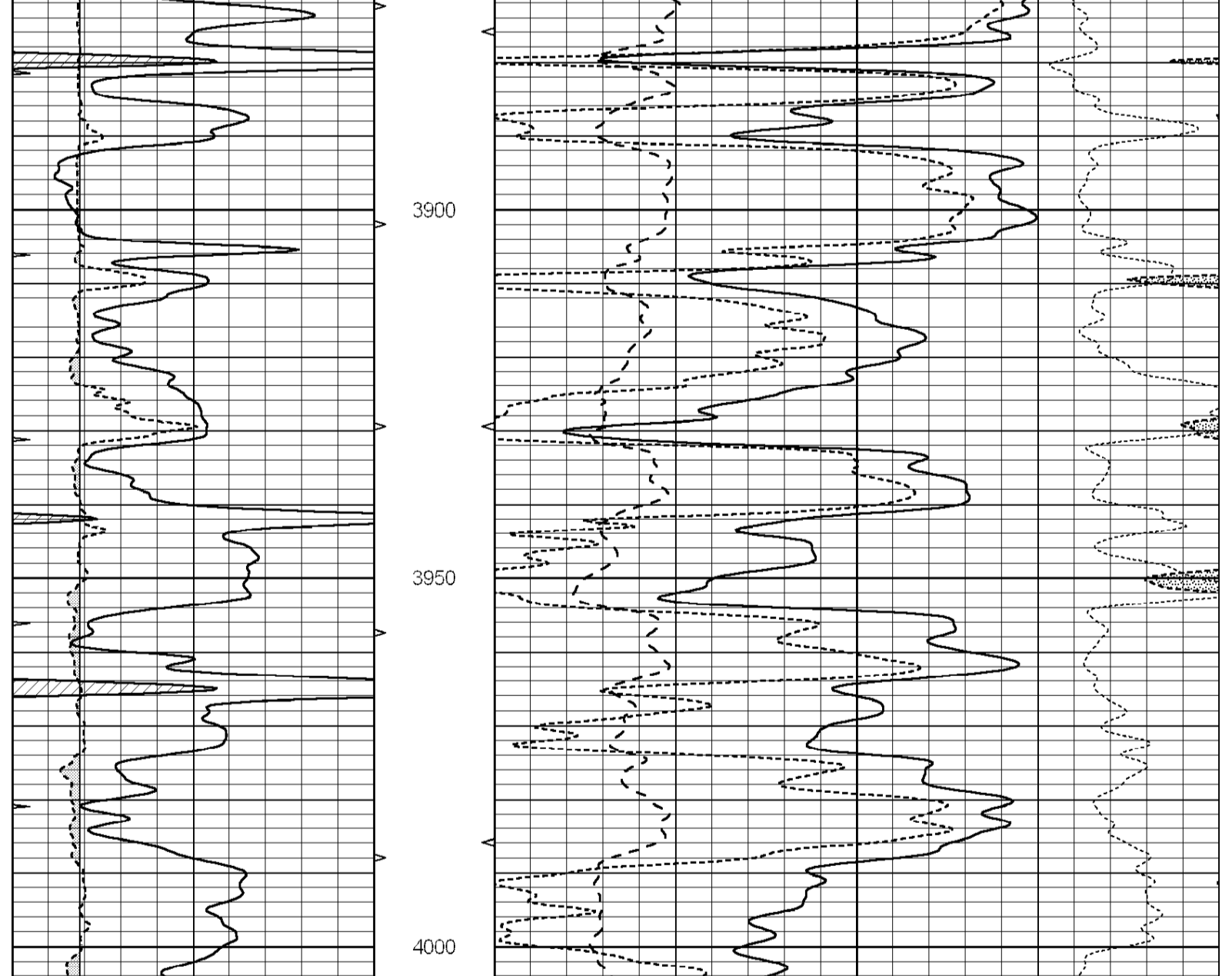
Database File: 1406pe.db
 Dataset Pathname: pass3.4
 Presentation Format: ldt_neu
 Dataset Creation: Tue Mar 14 00:03:23 2017 by Calc SOC 120430
 Charted by: Depth in Feet scaled 1.240



0 GAMMA RAY (GAPI) 150 ABHV 30 COMPENSATED DENSITY (pu) -10
 6 CALIPER (in) 16 10 (ft3) 0 30 COMPENSATED NEUTRON (pu) -10
 0 MINMK 20 TBHV 0 FE 10 -0.25 CORRECTION (g/cc) 0.25
 0 (ft3) 10

REPEAT SECTION

Database File: 1406pe.db
 Dataset Pathname: pass3.4
 Presentation Format: ldt_neu
 Dataset Creation: Mon Mar 13 22:54:30 2017 by Calc SOC 120430
 Charted by: Depth in Feet scaled 1.240



0 GAMMA RAY (GAPI) 150 ABHV 30 COMPENSATED DENSITY (pu) -10
 6 CALIPER (in) 16 10 (ft3) 0 30 COMPENSATED NEUTRON (pu) -10
 0 MINMK 20 TBHV 0 FE 10 -0.25 CORRECTION (g/cc) 0.25
 0 (ft3) 10

Calibration Report

Database File: 1406pe.db
 Dataset Pathname: pass3.4
 Dataset Creation: Tue Mar 14 00:03:23 2017 by Calc SOC 120430

Dual Induction Calibration Report

Serial-Model: PROBE7-DILG
 Surface Cal Performed: Tue Mar 07 03:26:56 2017
 Downhole Cal Performed: Mon Jul 28 12:02:56 2008
 After Survey Verification Performed: Mon Jul 28 12:02:56 2008

Surface Calibration

Loop:	Readings		References		Results	
	Air	Loop	Air	Loop	m	b
Deep	-0.014	0.629	0.000	400.000	675.000	2.000
Medium	0.030	0.728	0.000	464.000	675.000	-40.000

Internal:

Loop:	Zero		Cal		Results	
	Deep	Medium	Zero	Cal	m	b
Deep	0.011	0.610	0.000	400.000	667.135	-7.256
Medium	0.005	0.712	0.000	464.000	655.677	-3.102

Downhole Calibration

Loop:	Readings		References		Results	
	Zero	Cal	Zero	Cal	m'	b'
Deep	0.000	0.000	14.508	388.384	1.000	0.000
Medium	0.000	0.000	166.367	504.400	1.000	0.000
LL3	0.000	7.500	0.000	1400.000	0.000	0.000
	0.000	0.000	0.000	20.000	0.000	0.000
	0.000	-7.200	0.000	4000.000	0.000	0.000

After Survey Verification

Loop:	Readings		Targets		Results	
	Zero	Cal	Zero	Cal	m'	b'
Deep	0.000	0.000	0.000	0.000	0.000	0.000
Medium	0.000	0.000	0.000	0.000	0.000	0.000
LL3	0.000	1.000	0.000	1.000	0.000	0.000
	0.000	0.000	0.000	0.000	0.000	0.000
	0.000	1.000	0.000	1.000	0.000	0.000

Litho Density Calibration Report

Serial: 003N
 Model: PRE
 Performed Mon Mar 14 08:48:13 2016

Window	Background	Magnesium	Aluminum	Sandstone	
Window 1	1751.3	11741.0	3857.3	10207.8	cps
Window 2	1589.4	9536.2	3267.6	10282.0	cps
Window 3	1413.4	6466.1	2463.2	6838.7	cps
Window 4	399.5	407.1	405.1	405.5	cps
Long Space	0.0	7946.7	1678.1	8692.6	cps
Short Space	0.0	3366.2	2134.1	3410.2	cps
Rho	2.2	1.7100	2.5900	1.3800	g/cc
Rib		0.0000	2.5700	1.5500	

Rib Angle : 43.7
 Spine Angle : 73.7
 Rib Slope : 0.954
 Spine Slope : 3.412
 Density/Spine Ratio : 0.543
 Spine Intercept : -18.7

Before Survey Verification

Performed Wed Dec 31 18:00:00 1969

Window	Background	Magnesium	Aluminum	Sandstone	
Window 1	0.0	0.0	0.0	0.0	cps
Window 2	0.0	0.0	0.0	0.0	cps
Window 3	0.0	0.0	0.0	0.0	cps
Window 4	0.0	0.0	0.0	0.0	cps
Long Space	0.0	0.0	0.0	0.0	cps
Short Space	0.0	0.0	0.0	0.0	cps
Measured Rho	0.0000	0.0000	0.0000	0.0000	g/cc
Measured Correction	0.0000	0.0000	0.0000	0.0000	g/cc
Measured Pe	0.0000	0.0000	0.0000	0.0000	

After Survey Verification

Performed Wed Dec 31 18:00:00 1969

Window	Background	Magnesium	Aluminum	Sandstone	
Window 1	0.0	0.0	0.0	0.0	cps
Window 2	0.0	0.0	0.0	0.0	cps
Window 3	0.0	0.0	0.0	0.0	cps
Window 4	0.0	0.0	0.0	0.0	cps
Long Space	0.0	0.0	0.0	0.0	cps
Short Space	0.0	0.0	0.0	0.0	cps
Measured Rho	0.0000	0.0000	0.0000	0.0000	g/cc
Measured Correction	0.0000	0.0000	0.0000	0.0000	g/cc
Measured Pe	0.0000	0.0000	0.0000	0.0000	

Compensated Neutron Calibration Report

Serial Number: 070808
 Tool Model: Probe

PRE-SURVEY VERIFICATION

Detector	Readings	Measured	Target
Short Space	cps	pu	pu
Long Space	cps	pu	pu

POST-SURVEY VERIFICATION

Detector	Readings	Measured	Target
Short Space	cps	pu	pu
Long Space	cps	pu	pu

Gamma Ray Calibration Report

Serial Number: 070558
 Tool Model: OPEN_GR
 Performed: Mon Aug 22 01:00:15 2016

Calibrator Value: 1.0 GAPI
 Background Reading: 0.0 cps
 Calibrator Reading: 1.0 cps
 Sensitivity: 0.2800 GAPI/cps