



**COMPENSATED  
DENSITY/NEUTRON  
LOG**

Company **STROKE OF LUCK ENERGY &  
CUSTER VALLEY # 04-0517**  
Well **CUSTER VALLEY # 04-0517**  
Field **SOLOMON**  
County **ELLIS** State **KANSAS**

Location: **API # : 15-051-26874-0000**  
**1154' FSL & 2362' FWL**  
Permanent Datum **GROUND LEVEL Elevation 2057**  
Log Measured From **KELLY BUSHING 11' A.G.L**  
Drilling Measured From **KELLY BUSHING**  
SEC 24 TWP 11S RGE 19W  
Elevation **K.B. 2068  
D.F. 2066  
G.L. 2057**

Date	6/17/17		
Run Number	ONE		
Depth Driller	3700		
Depth Logger	3700		
Bottom Logged Interval	3676		
Top Log Interval	2800		
Casing Driller	8 5/8" @ 350'		
Casing Logger			
Bit Size	7 7/8		
Type Fluid in Hole	CHEMICAL MUD	CHLORIDES 14000 PPM	
Density / Viscosity	9.0/44		
pH / Fluid Loss	9.0/16.0		
Source of Sample	FLOWLINE		
Rm @ Meas. Temp	.30 @ 81F		
Rmt @ Meas. Temp	.22 @ 81F		
Rmc @ Meas. Temp	.36 @ 81F		
Source of Rmf / Rmc	MEASUREMENT		
Rm @ BHT	.21 @ 113F		
Time Circulation Stopped	2 HOURS		
Time Logger on Bottom			
Maximum Recorded Temperature	113F		
Equipment Number	3802		
Location	HAYS, KANSAS		
Recorded By	JASON CAPPELLUCCI		
Witnessed By	KEVIN BAILEY		

<<< Fold Here >>>

All interpretations are opinions based on inferences from electrical or other measurements and we cannot and do not guarantee the accuracy or correctness of any interpretation, and we shall not, except in the case of gross or willful negligence on our part, be liable or responsible for any loss, costs, damages, or expenses incurred or sustained by anyone resulting from any interpretation made by any of our officers, agents or employees. These interpretations are also subject to our general terms and conditions set out in our current Price Schedule.

**Comments**

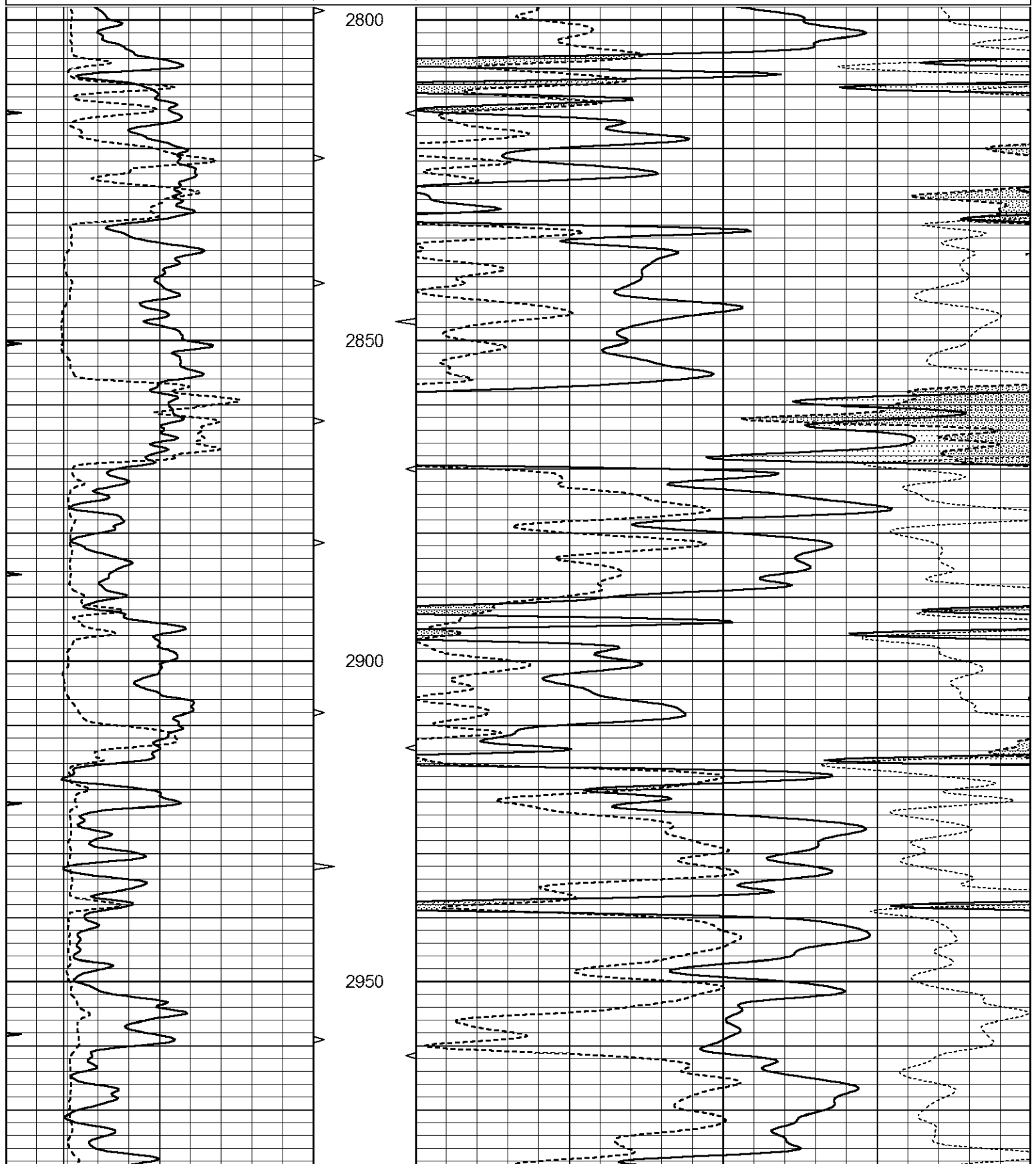
THANK YOU FOR USING ELI WIRELINE SERVICES, HAYS, KS. ( 785 ) 628-6395  
DIRECTIONS  
HAYS, KS. - NORTH TO BUCKEYE RD. - WEST TO HYACINTH RD. - NORTH  
TO DEAD END - EAST & NORTH INTO

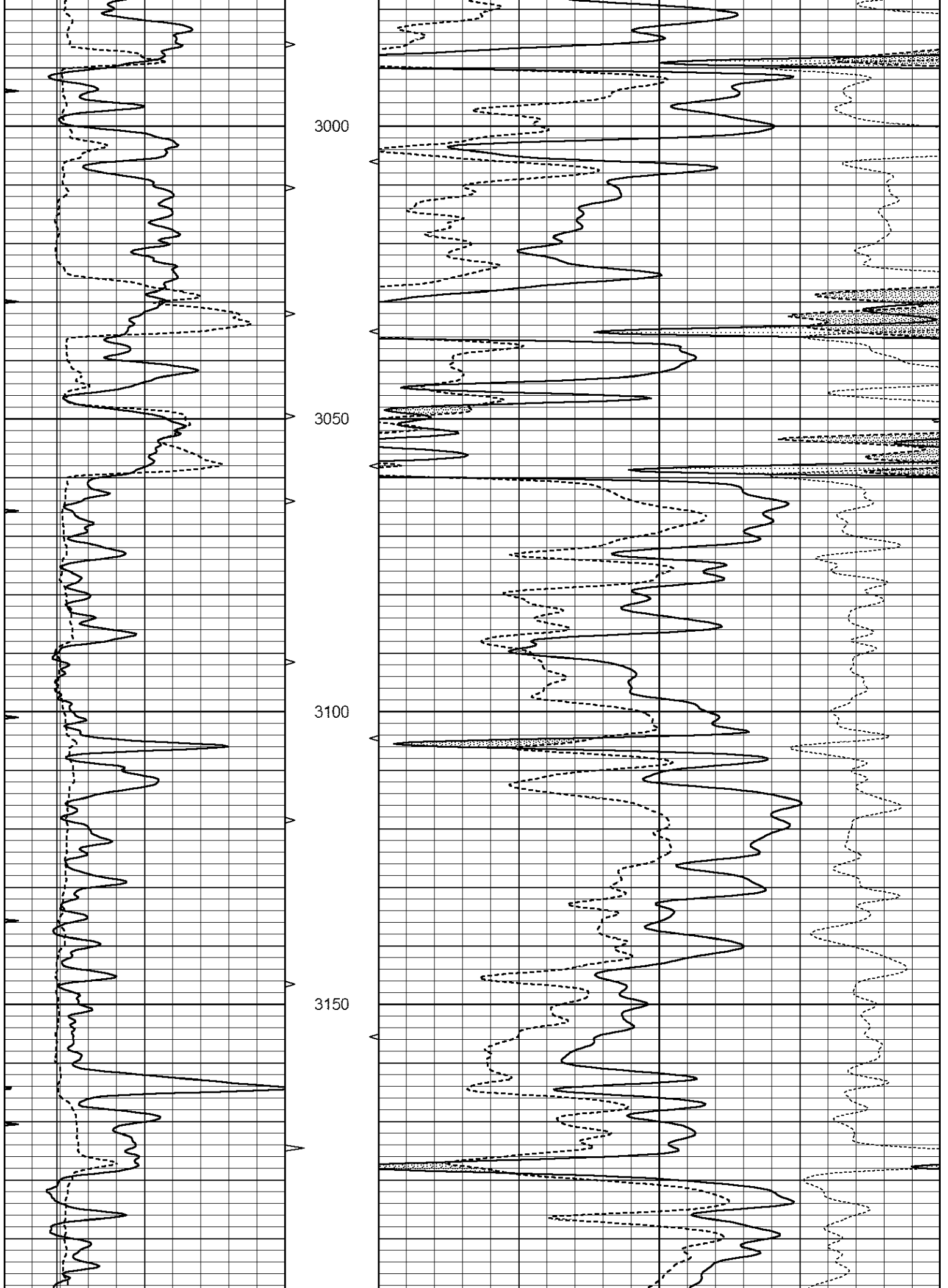


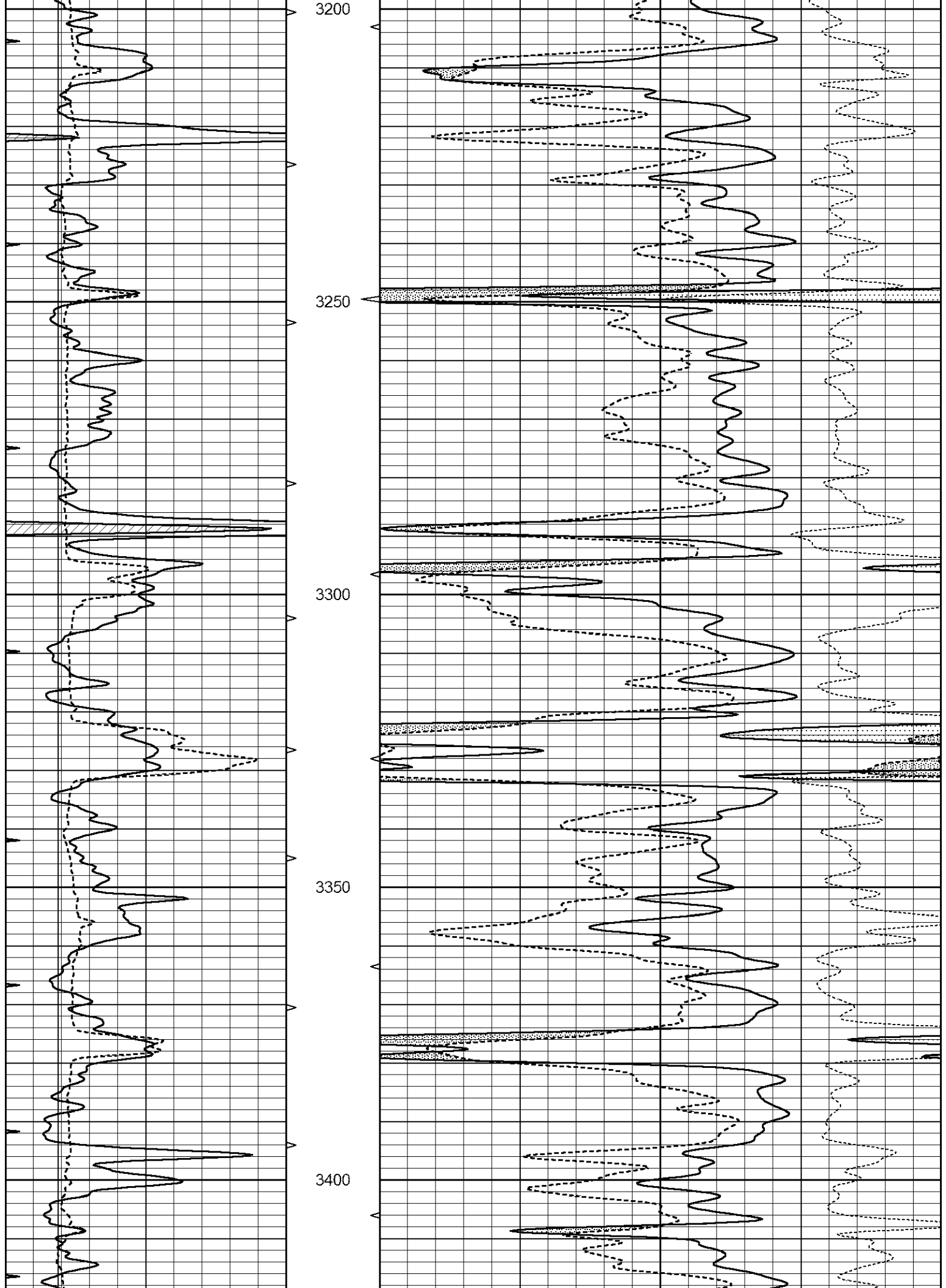
**MAIN SECTION**

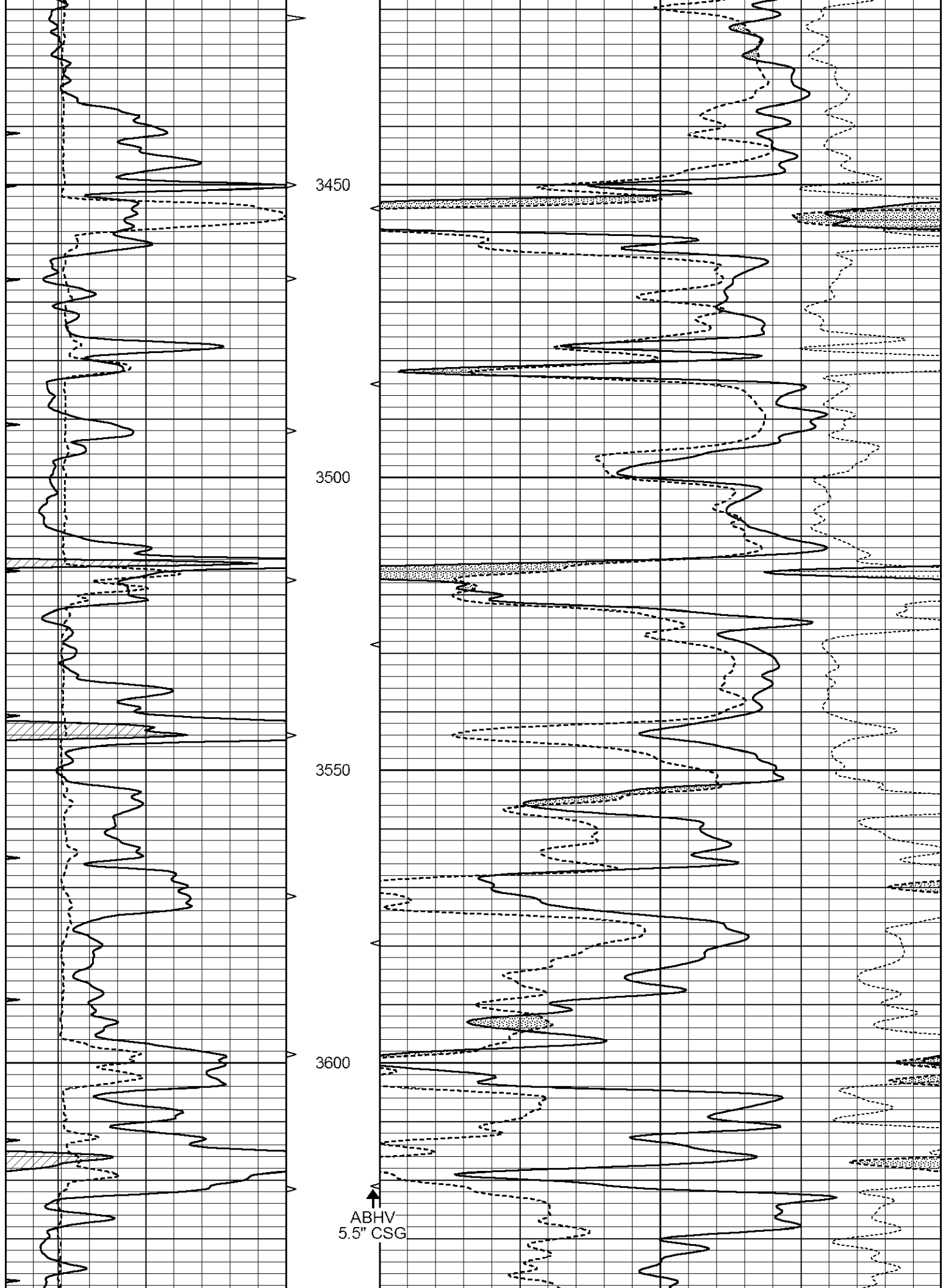
Database File 1150ddn.db  
 Dataset Pathname pass3.1  
 Presentation Format \_den\_neu  
 Dataset Creation Sat Jun 17 06:03:17 2017  
 Charted by Depth in Feet scaled 1:240

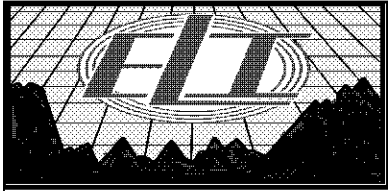
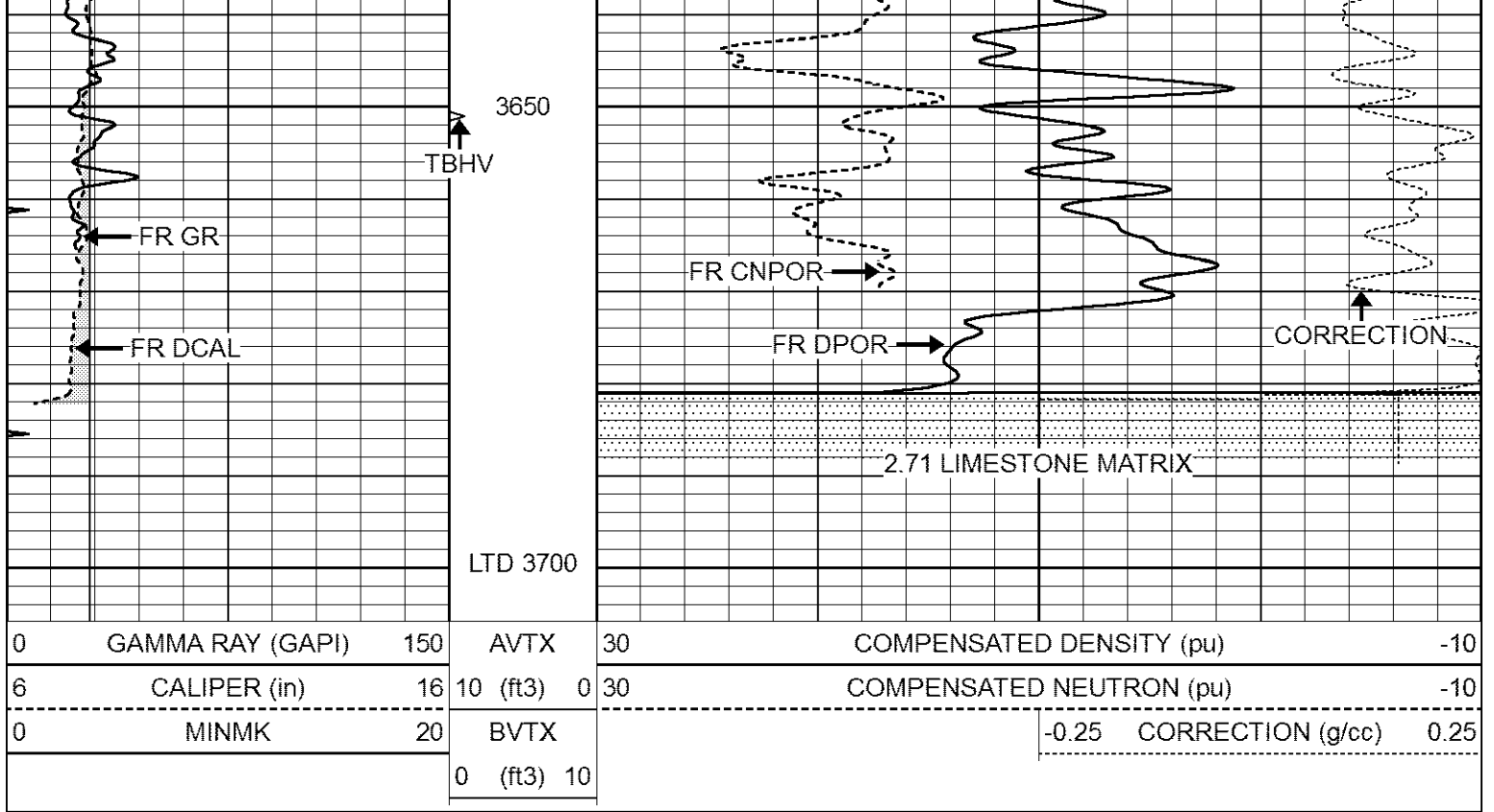
0	GAMMA RAY (GAPI)	150	AVTX	30	COMPENSATED DENSITY (pu)	-10	
6	CALIPER (in)	16	10 (ft3)	0	30	COMPENSATED NEUTRON (pu)	-10
0	MINMK	20	BVTX			-0.25 CORRECTION (g/cc)	0.25
			0 (ft3)	10			







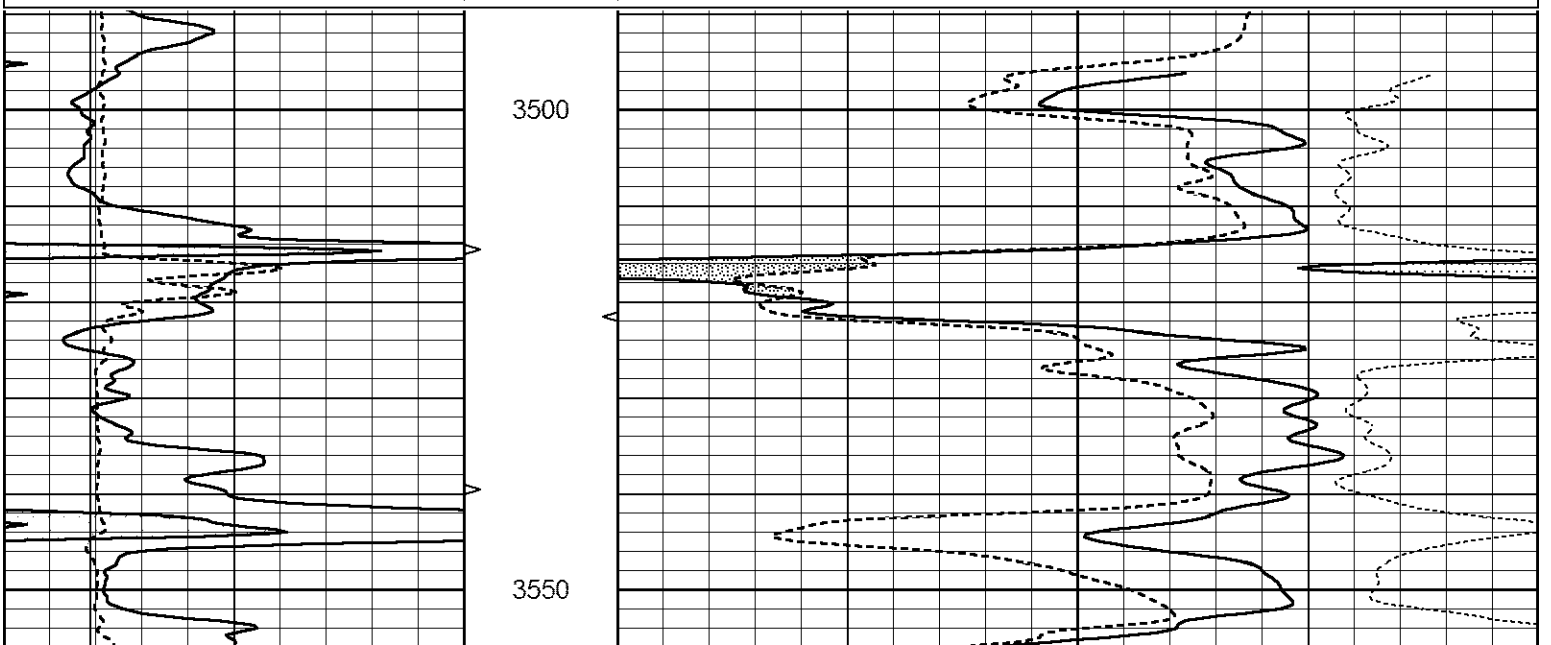


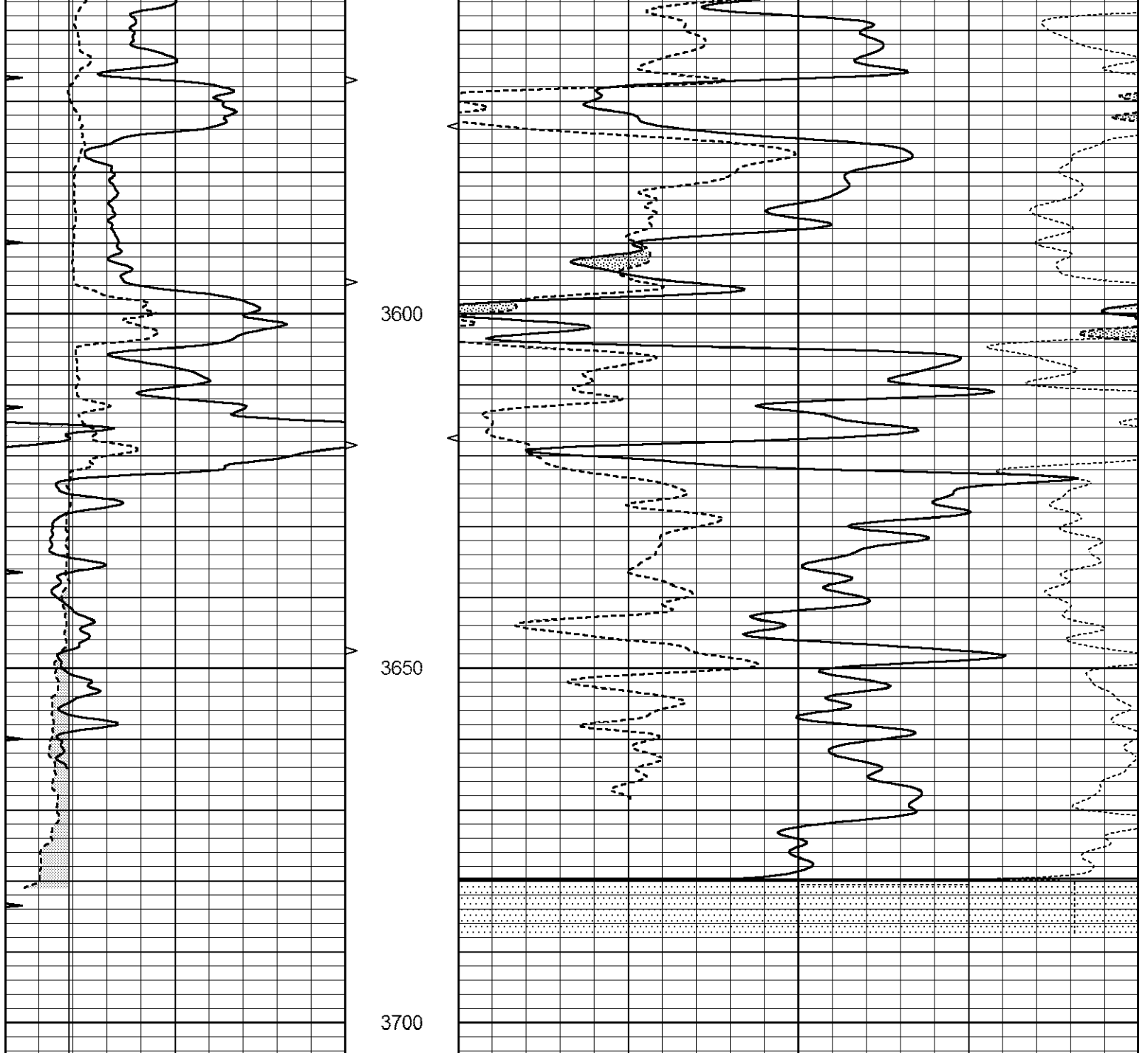


# REPEAT SECTION

Database File 1150ddn.db  
 Dataset Pathname pass2.1  
 Presentation Format \_den\_neu  
 Dataset Creation Sat Jun 17 06:05:56 2017  
 Charted by Depth in Feet scaled 1:240

0	GAMMA RAY (GAPI)	150	AVTX	30	COMPENSATED DENSITY (pu)	-10
6	CALIPER (in)	16	10 (ft3)	0 30	COMPENSATED NEUTRON (pu)	-10
0	MINMK	20	BVTX		-0.25	CORRECTION (g/cc) 0.25
			0 (ft3)	10		





0	GAMMA RAY (GAPI)	150	AVTX	30	COMPENSATED DENSITY (pu)	-10		
6	CALIPER (in)	16	10 (ft3)	0	30	COMPENSATED NEUTRON (pu)	-10	
0	MINMK	20	BVTX			-0.25	CORRECTION (g/cc)	0.25
			0 (ft3)	10				

### Calibration Report

Database File 1150ddn.db  
 Dataset Pathname pass2.1  
 Dataset Creation Sat Jun 17 06:05:56 2017

### Dual Induction Calibration Report

Serial-Model: FW1410-56-Probe  
 Surface Cal Performed: Fri Mar 13 14:03:50 2015  
 Downhole Cal Performed: Fri Mar 13 15:37:29 2015  
 After Survey Verification Performed: Fri Mar 13 15:37:29 2015

### Surface Calibration

Readings

References

Results

Readings				References			Results	
Loop:	Air	Loop		Air	Loop		m	b
Deep	0.008	0.765	V	1.000	400.000	mmho/m	527.061	-3.201
Medium	-0.056	0.761	V	1.000	464.000	mmho/m	567.187	32.510
Internal:	Zero	Cal		Zero	Cal		m	b
Deep	0.005	0.624	V	0.000	400.000	mmho/m	645.611	-3.034
Medium	0.012	0.721	V	0.000	464.000	mmho/m	653.591	-7.532

Downhole Calibration								
Readings			References			Results		
	Zero	Cal		Zero	Cal		m'	b'
Deep	-0.647	301.329	mmho/m	-0.780	336.378	mmho/m	1.117	-0.058
Medium	38.256	411.013	mmho/m	39.046	441.706	mmho/m	1.080	-2.280
LL3		7.471	V		1500.000	Ohm-m		
		0.001	V		20.000	Ohm-m		
		-7.085	V		6000.000	mmho-m		

After Survey Verification								
Readings			Targets			Results		
	Zero	Cal		Zero	Cal		m'	b'
Deep	0.000	0.000	mmho/m	-0.647	301.329	mmho/m	1.000	0.000
Medium	0.000	0.000	mmho/m	38.256	411.013	mmho/m	1.000	0.000
LL3		0.000	Ohm-m		1500.000	Ohm-m		
		0.000	Ohm-m		20.000	Ohm-m		
		0.000	mmho-m		3745.000	mmho-m		

Litho Density Calibration Report  
Serial: 140704  
Model: V4\_10P  
Source Number: 74GBq-19

Master Calibration				Performed: Wed Feb 11 18:53:41 2015			
	Background	Aluminum		Magnesium			
Window 1	613.01	6027.40		27508.60		cps	
Window 2	48.21	1424.77		7132.66		cps	
Window 4	266.48	1373.19		5767.15		cps	
Window 5	622.07	10090.30		18937.90		cps	
Window 6	49.07	1682.84		3271.18		cps	
Window 8	298.04	3248.38		5980.58		cps	
Bulk Density	-	2.6020		1.6830		g/cc	
Pe	-	3.0000		2.5070		b/e	
LS Alpha:	: -1.8451	SS Alpha:	: -0.7542	LS CPE:		: 1.0882	
LS Beta:	: 138648.8473	SS Beta:	: 21960.9250	SS CPE:		: 1.5181	

Before Survey Background Counts Verification			Performed: Wed Dec 31 18:00:00 1969		
Window 1	0.00	cps			
Window 2	0.00	cps			
Window 4	0.00	cps			
Window 5	0.00	cps			
Window 6	0.00	cps			
Window 8	0.00	cps			

Window 1	0.00	cps
Window 2	0.00	cps
Window 4	0.00	cps
Window 5	0.00	cps
Window 6	0.00	cps
Window 8	0.00	cps

Lithodensity Caliper Calibration

Performed: Wed Feb 11 18:53:41 2015

Results		Readings		References (in)		Gain	Offset
Low	High	Low	High				
1107.5	7124.1	8.0	15.0			0.0	6.5

Before Survey Caliper Verification

Performed:

	Reference	Reading
Caliper (in)	_____	_____

After Survey Caliper Verification

Performed:

	Reference	Reading
Caliper (in)	_____	_____

Compensated Neutron Calibration Report

Serial Number: 080621PMC  
 Tool Model: NABORS

PRE-SURVEY VERIFICATION

Detector	Readings	Measured	Target
Short Space	cps		
Long Space	cps	pu	pu

POST-SURVEY VERIFICATION

Detector	Readings	Measured	Target
Short Space	cps		
Long Space	cps	pu	pu

Gamma Ray Calibration Report

Serial Number: 070558  
 Tool Model: Probe1  
 Performed: Mon May 22 14:24:46 2017

Calibrator Value: 1.0 GAPI

Background Reading: 0.0 cps  
 Calibrator Reading: 1.0 cps

Sensitivity: 0.3000 GAPI/cps